

RESEARCH ARTICLE

# Multi-scale computational study of the mechanical regulation of cell mitotic rounding in epithelia

Ali Nematbakhsh<sup>1,2</sup>, Wenzhao Sun<sup>1</sup>, Pavel A. Brodskiy<sup>3</sup>, Aboutaleb Amiri<sup>4</sup>, Cody Narciso<sup>3</sup>, Zhiliang Xu<sup>1</sup>, Jeremiah J. Zartman<sup>3\*</sup>, Mark Alber<sup>1,2\*</sup>

**1** Department of Applied and Computational Mathematics and Statistics, University of Notre Dame, Notre Dame, Indiana, United States of America, **2** Department of Mathematics, University of California, Riverside, California, United States of America, **3** Department of Chemical and Biomolecular Engineering, University of Notre Dame, Notre Dame, Indiana, United States of America, **4** Department of Physics, University of Notre Dame, Notre Dame, Indiana, United States of America

☉ These authors contributed equally to this work.  
\* [malber@nd.edu](mailto:malber@nd.edu) (MA); [jzartman@nd.edu](mailto:jzartman@nd.edu) (JJZ)



**OPEN ACCESS**

**Citation:** Nematbakhsh A, Sun W, Brodskiy PA, Amiri A, Narciso C, Xu Z, et al. (2017) Multi-scale computational study of the mechanical regulation of cell mitotic rounding in epithelia. *PLoS Comput Biol* 13(5): e1005533. <https://doi.org/10.1371/journal.pcbi.1005533>

**Editor:** Anand R. Asthagiri, Northeastern University, UNITED STATES

**Received:** October 14, 2016

**Accepted:** April 24, 2017

**Published:** May 22, 2017

**Copyright:** © 2017 Nematbakhsh et al. This is an open access article distributed under the terms of the [Creative Commons Attribution License](https://creativecommons.org/licenses/by/4.0/), which permits unrestricted use, distribution, and reproduction in any medium, provided the original author and source are credited.

**Data Availability Statement:** Code is posted on: <https://github.com/ali1363/ScCell>.

**Funding:** MA, JJZ, PAB, CN, AN, AA were supported by National Science Foundation grant CBET - 1403887 ([https://www.nsf.gov/awardsearch/showAward?AWD\\_ID=1403887&HistoricalAwards=false](https://www.nsf.gov/awardsearch/showAward?AWD_ID=1403887&HistoricalAwards=false)). JJZ was supported in part by National Science Foundation grant CBET-1553826 ([https://www.nsf.gov/awardsearch/showAward?AWD\\_ID=1553826](https://www.nsf.gov/awardsearch/showAward?AWD_ID=1553826)). MA and ZX were also supported by National Institutes

## Abstract

Mitotic rounding during cell division is critical for preventing daughter cells from inheriting an abnormal number of chromosomes, a condition that occurs frequently in cancer cells. Cells must significantly expand their apical area and transition from a polygonal to circular apical shape to achieve robust mitotic rounding in epithelial tissues, which is where most cancers initiate. However, how cells mechanically regulate robust mitotic rounding within packed tissues is unknown. Here, we analyze mitotic rounding using a newly developed multi-scale subcellular element computational model that is calibrated using experimental data. Novel biologically relevant features of the model include separate representations of the sub-cellular components including the apical membrane and cytoplasm of the cell at the tissue scale level as well as detailed description of cell properties during mitotic rounding. Regression analysis of predictive model simulation results reveals the relative contributions of osmotic pressure, cell-cell adhesion and cortical stiffness to mitotic rounding. Mitotic area expansion is largely driven by regulation of cytoplasmic pressure. Surprisingly, mitotic shape roundness within physiological ranges is most sensitive to variation in cell-cell adhesivity and stiffness. An understanding of how perturbed mechanical properties impact mitotic rounding has important potential implications on, amongst others, how tumors progressively become more genetically unstable due to increased chromosomal aneuploidy and more aggressive.

## Author summary

Mitotic rounding (MR) during cell division which is critical for the robust segregation of chromosomes into daughter cells, plays important roles in tissue growth and morphogenesis, and is frequently perturbed in cancerous cells. Mechanisms of MR have been investigated in individual cultured cells, but mechanisms regulating MR in tissues are still poorly understood. We developed and calibrated an advanced subcellular element-based

of Health grant U01 HL116330 [https://projectreporter.nih.gov/project\\_info\\_description.cfm?aid=8744538&icde=22003837&ddparam=&ddvalue=&ddsub=&cr=1&csb=default&cs=ASC](https://projectreporter.nih.gov/project_info_description.cfm?aid=8744538&icde=22003837&ddparam=&ddvalue=&ddsub=&cr=1&csb=default&cs=ASC). ZX was also supported by National Science Foundation grant DMS-1517293 ([https://www.nsf.gov/awardsearch/showAward?AWD\\_ID=1517293&HistoricalAwards=false](https://www.nsf.gov/awardsearch/showAward?AWD_ID=1517293&HistoricalAwards=false)) PB was supported in part by Walther Cancer Foundation Interdisciplinary Interface Training Program Fellowship (no URL). CN was supported in part by Berry Fellowship through the Notre Dame Advanced Diagnostics & Therapeutics. Announcement: (<http://precisionmedicine.nd.edu/news/59399-graduate-fellowships-awarded-for-biomedical-research-at-notre-dame/>). The funders had no role in study design, data collection and analysis, decision to publish, or preparation of the manuscript.

**Competing interests:** The authors have declared that no competing interests exist.

computational model called Epi-Scale that enables quantitative testing of hypothesized mechanisms governing epithelial cell behavior within the developing tissue microenvironment. Regression analysis of predictive model simulation results reveals the relative contributions of osmotic pressure, cell-cell adhesion and cortical stiffness to mitotic rounding and establishes a novel mechanism for ensuring robustness in mitotic rounding within densely packed epithelia.

## Introduction

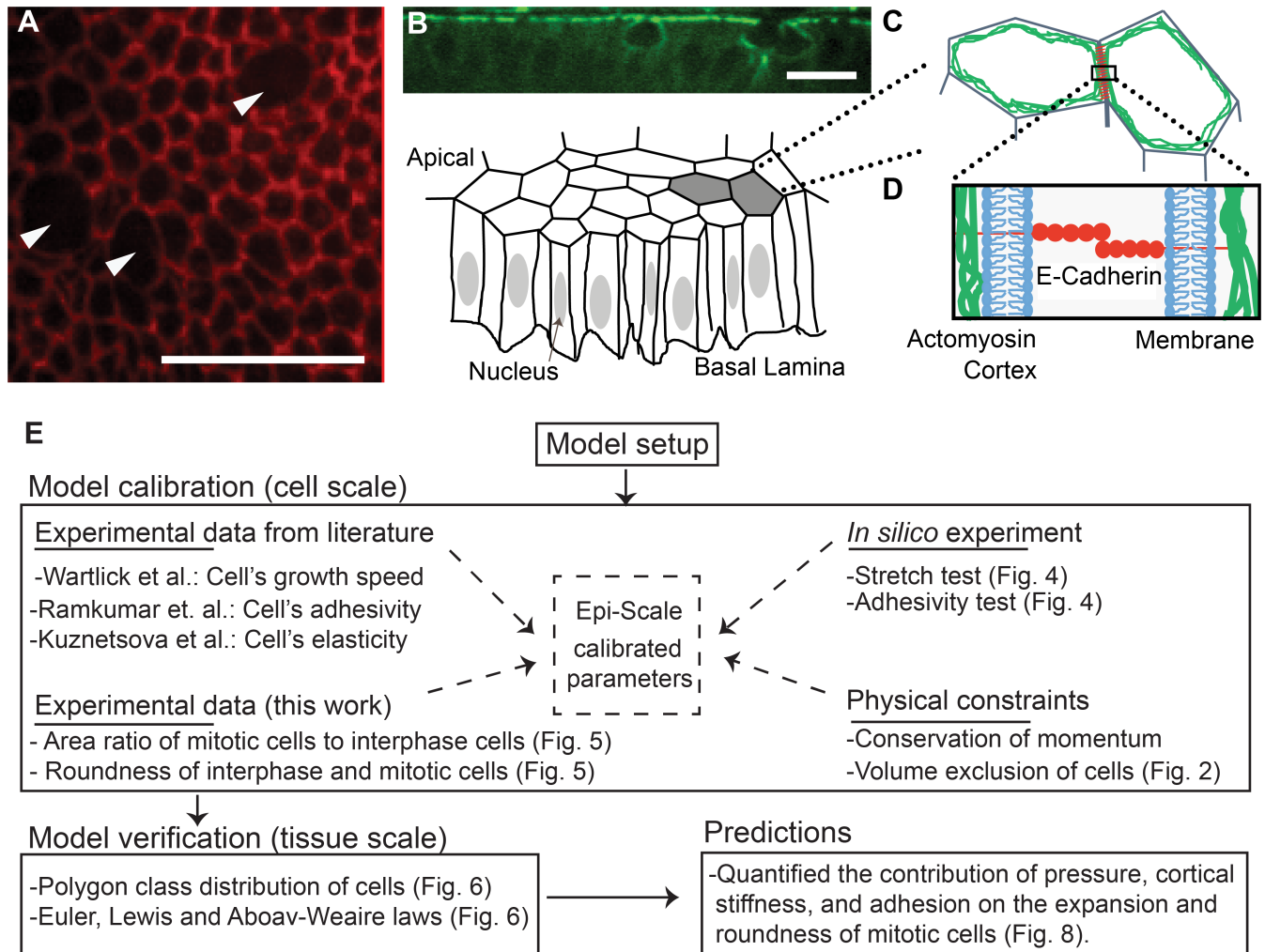
Epithelia are tissues composed of tightly adherent cells that provide barriers between internal cells of organs and the environment and are one of the four basic tissue types in the human body [1–3] (Fig 1). Epithelial expansion driven by cell proliferation is a key feature throughout development, and occurs in hyperplasia, a precursor to cancer. Cell divisions during development must occur robustly, as mis-segregation of chromosomes leads to severe genetic abnormalities such as aneuploidy [4]. Over 90% of human tumors are derived from epithelia [5], and the accumulation of genetic errors during cell division can lead to all of the hallmarks of cancer [6]. Division in epithelia is further complicated by the need for a dividing cell to stay connected to its neighbors [7]. A deeper understanding of the biophysical mechanisms governing the behavior of mitotic cells in epithelia will result in a better understanding of many diseases including cancer.

Epithelial cells entering mitosis rapidly undergo structural changes that result in the apical surface of the cell becoming larger and rounder, in a process known as mitotic rounding (MR) [8,9]. MR occurs in detached cells, cells adherent to a substrate as well as in epithelial cells within tissues [10–12]. MR in epithelia coincides with an increased polymerization of actomyosin at the cell cortex, which results in an increase in cortical stiffness [4,11]. Simultaneously, the intracellular pressure increases [11], and cells partially reduce adhesion to their neighbors and the substrate [4].

However, the roles of cell-cell adhesion, cell stiffness, and intracellular pressure during mitotic rounding are not fully resolved in cultured cells, and even less is known in the tissue context [13]. For example, Stewart et al. [11] indicates that both pressure and the actin-myosin cortex are important for mitotic swelling while Zlotek-Zlotkiewics et al. [14] observe that the actin-myosin cortex is not involved in mitotic swelling. Further, it is technically challenging to modulate the mechanical properties of individual mitotic cells in tissues with small perturbations that do not “break” the system. Thus, this gap-in-knowledge is currently extremely hard to address experimentally.

Recently, computational modeling coupled with experimentation has become a powerful tool for identifying the biophysical mechanisms governing organogenesis [15–20]. MR is investigated in this paper by using a novel multi-scale sub-cellular element model (SEM) called Epi-Scale that simulates epithelial cells in growing tissues. New biologically relevant features of the model include: i) separate representations of the apical membrane and cytoplasm, as well as cell-cell interactions at the tissue scale; ii) a systematic calibration of the model parameters to provide accurate biological simulations of cell division and tissue growth; and iii) a detailed description of cell properties during mitotic rounding.

We used multi-scale model simulations and response surface methodology (multiple linear regression) [21,22] to investigate the extent to which a mitotic cell-cell adhesion, cortical stiffness, and internal pressure impact the roundness and apical cross-sectional area of mitotic cells. The quantitative analysis of model simulations demonstrated that increased cytoplasmic



**Fig 1. Epithelial mechanics and workflow outline.** (A) Apical surface of epithelial cells within the *Drosophila* wing imaginal disc that are marked by E-cadherin tagged with fluorescent GFP (DE-cadherin::GFP). Multiple cells within the displayed region are undergoing mitotic rounding with a noticeable decrease in fluorescent intensities of E-Cadherin. (B) Experimental image of cross-section of wing disc marking levels of actomyosin (Myosin II::GFP). (C) Cartoon abstraction of epithelial cells, which are polarized with apical and basal sides. Actomyosin and mechanical forces during mitotic rounding are primarily localized near the apical surface. (D) At the molecular scale, the boundary between cells consists of a lipid bilayer membrane for each cell, E-cadherin molecules that bind to each other through homophilic interactions, and adaptor proteins that connect the adhesion complexes to an underlying actomyosin cortex that provides tensile forces along the rim of apical areas of cells. (E) The graphical workflow of the computational modeling setup, calibration, verification and predictions. Arrows indicate mitotic cells. Scale bars are 10 micrometers.

<https://doi.org/10.1371/journal.pcbi.1005533.g001>

pressure is the main driver of the increase of mitotic cell's apical area, which was balanced by both cortical stiffness and cell adhesivity. Increased cortical stiffness and decreased adhesion is shown to promote cell roundness. Surprisingly, within the range of experimentally observed MR values, the relative roundness of cells was not sensitive to small perturbations in cytoplasmic pressure. Understanding how perturbed mechanical properties such as cytoplasmic pressure, cell-cell adhesion and cortical stiffness impact mitotic rounding have important implications on, amongst others, how tumors progressively become more genetically unstable (chromosomal aneuploidy) and more aggressive.

The paper is organized as follows. The Methods section describes modeling background and new model description. The Results section provides details of calibration of single cell

model parameters using quantitative experimental data. Calibrated model simulations are shown to predict emergent properties of epithelial topology without requiring further calibration using tissue-level properties. The model is then used to quantify the relative impacts of cell-cell adhesion, membrane stiffness and intracellular pressure on MR using two separate criteria: apical area and apical roundness. The paper ends with the Discussion section, which puts predictions of the model in more general biological context. It also describes future extensions of the computational model environment for simulating epithelial tissue mechanics in greater biological detail.

## Methods

### Modeling background

Multiple computational approaches have been utilized to model various aspects of epithelial tissue dynamics, each with its particular focus and applications (see, amongst others, reviews [15,23–27]). For example, the Cellular Potts Modeling (CPM) approach has been used successfully to take into account cell adhesivity for studying cell aggregation as well as cell morphogenesis (see, amongst others, [28–31]). Finite element models (FEMs) and models based on solving Navier-Stokes equations have also been implemented to investigate cell growth and division [32–35]. Vertex based models (VBM) provided an efficient and fast approach to study regulation of cell topology, tissue-size regulation, tissue morphogenesis, and the role of cell contractility in determining tissue curvature [23,36–41]. In VBMs, cellular shapes are defined by the shared vertices of neighboring cells and edges between them.

The Subcellular Elements Model (SEM), developed initially by Newman’s group [42] for simulating multi-cellular systems to encompass multiple length scales, has been now adopted by many groups as a general computational modeling approach. A particular advantage of the SEM approach is that it can provide local representations of mechanical properties of individual cells which can be directly related to the experimental data [43]. Each cell in a SEM consists of a set of nodes representing a coarse-grained representation of subcellular components of biological cells. Node-node interactions are represented by energy potentials. SEMs have been extended to predict how mechanical forces generated by cells are redistributed in a tissue and for studying tissue rheology, blood clot deformation, and cell-cell signaling [44–46]. For example, a SEM model with GPU implementation was used to compare multiple mechanisms governing the formation of stratified layers of the epidermis [19] as well as mechanisms governing intestinal crypt homeostasis [47]. Jamali et al. [48] also developed an SEM model to represent the membrane and nucleus of the cell by nodes connected by overdamped springs. Gardiner et al. [49] described a SEM with locally-defined mechanical properties. Christely et al. [45] have developed an efficient computational implementation of the SEM simulating role of Notch signaling in cell growth and division, on GPU clusters to decrease computational time. A SEM model was also used to study aspects of epithelial cell mechanics without making assumptions about cell shapes [50].

### Multi-component computational model of epithelia

We describe in this section novel multi-scale SEM computational platform called Epi-Scale which simulates the growth of flat epithelial monolayers. Model simulations focus on representing two-dimensional (2D) planar cell shapes near the apical surfaces of cells of the *Drosophila* wing imaginal disc, which is popular model to study the biophysics and genetics of epithelial tissue growth. The 2D planar model is a common simplifying approximation that was used in many previous models of wing disc growth [18,38,39,51,52]. It is reasonable to use a 2D model for studying many epithelial processes in the *Drosophila* wing disc pouch because

it consists of a single layer of cells and the essential structural components of those cells, including E-cadherins and actomyosin, are concentrated on the apical surface of the epithelia (Fig 1A–1D). E-cadherin is responsible for adhesion between two neighboring cells, and actomyosin, which is concentrated near the apical surface, drives cell contractility. The nucleus and most of the cytoplasm are pushed up to the apical surface during cell division. Using a 2D approximation also allows us to model a large number of cells with high resolution and with special attention to mechanical cell properties. The future development of the Epi-Scale simulation platform implemented on GPU clusters, will also enable 3D simulations with reasonable computational costs.

In what follows, we first describe different types of the sub-cellular nodes that are used to simulate each cell, and the interactions between them. Then, the equations of motion of each subcellular element are provided. Finally, approaches for modeling cell’s growth, transition to mitotic phase, and division are described. The workflow of the model is shown in Fig 1E.

### Sub-cellular elements

Epi-Scale represents individual cells as collections of two types of interacting subcellular elements: internal nodes and membrane nodes (Fig 2). The internal nodes account for the cytoplasm of the cell, and the membrane nodes represent both plasma membrane and associated contractile actomyosin cortex. The internal and membrane nodes are placed on a 2D plane, representing the apical surface of epithelia.

Interactions between internal and membrane nodes are modeled using potential energy functions as shown in Fig 2A [45,53]. Combined interactions between pairs of internal nodes ( $E^I$ ) represent the cytoplasmic pressure of a cell. Combined interactions between internal nodes and membrane nodes of the same cell ( $E^{MI}$ ) represent the pressure from cytoplasm to the membrane. Interactions between membrane nodes of the same cell ( $E^{MMS}$ ) are used to model the cortical stiffness. Cell-cell adhesion ( $E^{Adh}$ ) is modeled by combining pairwise interactions between nodes of the membranes of two neighboring cells.  $E^{MMD}$  is a repulsive Morse potential function between membrane nodes of neighboring cells that prevents membranes of adjacent cells from overlapping. Epi-Scale utilizes spring and Morse energy potential functions to simulate the interactions between subcellular elements. Linear and torsional springs are represented by energy functions  $E^{MMS}$  and  $E^{Adh}$  [34,54], while Morse potential functions are used in energy function  $E^{MI}$ ,  $E^I$ , and  $E^{MMD}$  [46] (see Table 1 and Fig 2).

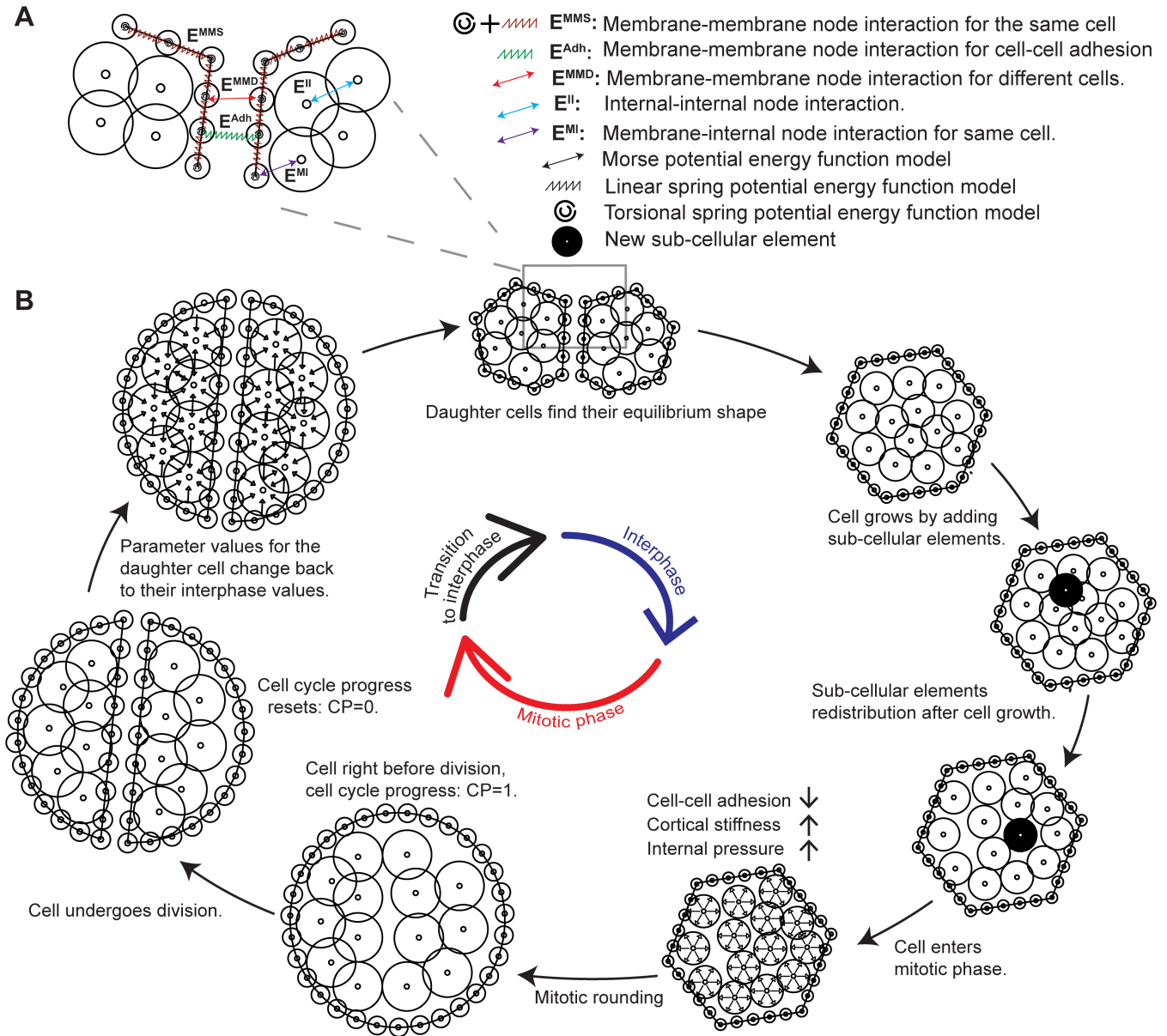
The Morse potential consists of two terms, generating short-range repulsive and long-range attractive forces [42]. For example, the following expression is a Morse potential function used in  $E^{MI}$  to represent an interaction between internal node  $i$  and membrane node  $j$ :

$$E_{ij}^{MI} = \left[ U^{MI} \exp\left(-\frac{|x_i - x_j|}{\xi^{MI}}\right) - W^{MI} \exp\left(-\frac{|x_i - x_j|}{\gamma^{MI}}\right) \right] \quad (1)$$

where  $U^{MI}$ ,  $W^{MI}$ ,  $\xi^{MI}$ , and  $\gamma^{MI}$  are Morse parameters. The same form of the potential with different sets of parameters is used for  $E^I$  and  $E^{MMD}$  (Table 2). These potential functions govern the motion of internal and membrane nodes inside the cells resulting in the deformation and rearrangement of cells within the tissue. S2 Appendix provides the formulation of potential energy functions used in the Epi-Scale model.

### Equations of motion of individual nodes

Displacement of each internal or membrane node is calculated at each moment in time based on the potential energy functions. The model assumes that nodes are in an overdamped regime [20,38,53] so that inertia forces acting on the nodes can be neglected. This leads to the



**Fig 2. Diagram of the underlying physical basis of model simulations.** (A) Intracellular and intercellular interactions between different elements of the model. Symbols and notations are indicated in the legend. (B) Implementation of the simulation of cell cycle in the model.

<https://doi.org/10.1371/journal.pcbi.1005533.g002>

following equations of motion describing movements of internal and membrane nodes, respectively:

$$\eta \dot{\mathbf{x}}_i^I = - \left( \sum_j \nabla E_{ij}^{MI} + \sum_m \nabla E_{im}^{II} \right) \quad i = 1, 2, \dots, N^I \quad (2)$$

$$\eta \dot{\mathbf{x}}_j^M = - \left( \sum_i \nabla E_{ij}^{MI} + \sum_k \nabla E_{kj}^{MMS} + \sum_l \nabla E_{lj}^{MMD} + \nabla E_j^{Adh} \right) \quad j = 1, 2, \dots, N^M \quad (3)$$

where  $\eta$  is the damping coefficient,  $\mathbf{x}_i^I$  and  $\mathbf{x}_j^M$  are positions of internal node and membrane nodes indicated by indices  $i$  and  $j$ .  $m$  is the index for any internal node interacting with the

**Table 1. Potential energy functions in the Epi-Scale model.**

Potential function	Type of potential function	Biological concept
Internal-internal nodes ( $E^I$ )	Morse	Internal pressure
Membrane-internal nodes ( $E^{MI}$ )	Morse	Keeps the cytoplasm inside the cell and applies pressure from the cell's cytoplasm to the cell's membrane
Membrane-membrane nodes of neighboring cells ( $E^{MMD}$ )	Morse	Volume exclusion of the cells (Fig 2)
Membrane-membrane nodes of neighboring cells ( $E^{adh}$ )	Linear spring	Adhesion between neighboring cells
Membrane-membrane nodes of the same cell ( $E^{MMS}$ )	Linear and torsional spring	Membrane and cortex stiffness of the cell

<https://doi.org/10.1371/journal.pcbi.1005533.t001>

internal node  $i$ .  $k$  is the index for any membrane node of the same cell interacting with the membrane node  $j$ . Finally,  $l$  is the index for any membrane node of different cell interacting with the membrane node  $j$ . Note that adhesion between membranes of two neighboring cells is represented as pair-wise interaction between membrane nodes. Consequently, no summation with respect to different nodes is needed in Eq 3. Eqs 2 & 3 are solved at the same time for all  $N^I$  internal nodes and  $N^M$  membrane nodes.

Eqs 2 and 3 are discretized in time using forward Euler method and positions of nodes  $x_i^I$  and  $x_j^M$  are incremented at discrete times as follows

$$x_i^I(t + \Delta t) = x_i^I(t) - \left( \sum_j \nabla(E_{ij}^{MI})(t) + \sum_m \nabla(E_{im}^{II})(t) \right) \frac{\Delta t}{\eta} \quad (4)$$

where  $\Delta t$  is the time step size. The same discretization technique is used for the equations of motion of the membrane nodes.

Epi-Scale platform is computationally implemented on a cluster of Graphical Processing Units (GPUs). This enables us to run simulations with subcellular resolution at the micro-scale with a reasonable computational cost and to study the impact of changes in individual cell mechanical properties on the tissue development at the macro-scale. S1 Appendix provides details about the simulation algorithm, GPU implementation and computational cost.

## Cell cycle

Model parameters were set based on experimental values determined from studies of *Drosophila* wing disc development, an established genetically accessible model of organ development [55]. The growth of the wing disc is spatially uniform and decreases over time [56]. The growth rate for cell  $i$  is modeled by an exponentially decaying function fit to the experimental data for *Drosophila* wing disc [56], with a random term representing stochastic variation among cells:

$$g_i(t) = (g_{0,Avg} + Rnd[-g_0, g_0])e^{-k_g t} \quad (5)$$

where  $g_{0,Avg}$  is the average growth rate of cells in the beginning of the simulation and  $Rnd[-g_0, g_0]$  is a random number chosen using a uniform distribution in the range of  $[-g_0, g_0]$ .  $k_g$  is the decay constant of the growth rate.

Cells cycle through interphase and mitosis phases in the simulation. The variable Cell Progress ( $CP \in [0,1]$ ) describes progress of a cell through the cell cycle from the beginning of the interphase ( $CP = 0$ ) to the end of the cell division ( $CP = 1$ ).  $CP$  is updated based on cell growth

**Table 2. Energy function parameters.**

Parameter	Interphase	Mitotic phase	Values during interphase & mitosis	Source or calibration section
$E^I$	$U_{inter}^I$	$U_{mit}^I$	0.49 & 21.75 nN.μm	Fig 5 and Section 4 in S3 Appendix
	$W_{inter}^I$	$W_{mit}^I$	0.15 & 6.71 nN.μm	
	$\zeta_{inter}^I$	$\zeta_{mit}^I$	0.31 & 0.58 μm	
	$\gamma_{inter}^I$	$\gamma_{mit}^I$	1.25 & 1.34 μm	
	$L_{inter}^I$	$L_{mit}^I$	1.56 μm & 3.12 μm	
$E^{MI}$	$U_{inter}^{MI}$	$U_{mit}^{MI}$	0.78 & 4.36 nN.μm	Fig 5 and Section 4 in S3 Appendix
	$\zeta_{inter}^{MI}$	$\zeta_{mit}^{MI}$	0.13 & 0.27 μm	
	$L_{inter}^{MI}$	$L_{mit}^{MI}$	1.56 μm & 3.12 μm	
$E^{MMD}$	$U_{inter}^{MMD}$	$U_{mit}^{MMD}$	3.9 nN.μm	Volume exclusion of the cells (Fig 2)
	$W_{inter}^{MMD}$	$W_{mit}^{MMD}$	3.9 nN.μm	
	$\zeta_{inter}^{MMD}$	$\zeta_{mit}^{MMD}$	0.13 μm	
	$\gamma_{inter}^{MMD}$	$\gamma_{mit}^{MMD}$	1.6 μm	
	$L_{inter}^{MMD}$	$L_{mit}^{MMD}$	0.78 μm	
$E^{adh}$	$k_{inter}^{Adh}$	$k_{mit}^{Adh}$	20 & 8.0 nN/μm	[61,69,70] and Fig 5
	$L_{max}^{Adh}$	$L_{max}^{Adh}$	0.40 μm	
	$L_{min}^{Adh}$	$L_{min}^{Adh}$	0.062 μm	
$E^{MMS}$	$k_{inter}^{Stiff}$	$k_{mit}^{Stiff}$	200 & 450 nN/μm	[67,68] and Fig 5
	$L_{inter}^{Stiff}$	$L_{mit}^{Stiff}$	0.060 & 0.13 μm	
	$k_{inter}^{Tor}$	$k_{mit}^{Tor}$	6.0 & 7.0 nN.μm/rad	

\*\* Other Morse parameters are equal to zero. Values represent the central point in the CCD experimental design (Fig 7A).

<https://doi.org/10.1371/journal.pcbi.1005533.t002>

rate as follows:

$$CP_i(t + \Delta t) = CP_i(t) + g_i(t) \cdot \Delta t \tag{6}$$

The number of internal nodes of a cell increases as the cell grows. The number of initial and final nodes can be varied based on the desired resolution of a single cell. Simulations in this work start with 20 internal nodes at CP = 0 and end with 40 internal nodes at CP = 1. So, an internal node is added for every 1/20 increase in CP (Fig 2) to reach the desired 40 internal nodes at the end of cell cycle. The new internal node is randomly placed within a radius 0.2R<sub>c</sub> from the center of the cell, where R<sub>c</sub> is the radius of the cell. Epithelial cells undergoing mitosis increase their intracellular pressure by adjusting their osmolarity relative to their surroundings [57]. Additionally, the actomyosin cortex is enriched, and cellular adhesion to the substrate and to neighboring cells are downregulated [11,58–62]. Since these changes in mitotic cells occur concurrently, the relative impact on a mitotic cell cannot be easily decomposed in experiments into separable effects.

To simulate MR, parameters regulating cell-cell adhesion, cortical stiffness, and internal pressure of cells in the mitotic phase (M phase) are varied linearly from interphase parameter values to mitotic parameter values to represent the changes in cell mechanical properties during mitosis (see Table 2) [10,11,61]. For example,  $U^{MI}$ , Morse parameter that determines cytoplasmic pressure on the membrane of the cell (see Section 4 in S3 Appendix), was varied from the interphase value ( $U_{inter}^{MI}$ ) to the mitotic value ( $U_{mit}^{MI}$ ), by using the following function:

$$U^{MI} = U_{inter}^{MI} \frac{1 - CP}{1 - CP_{mit}} + U_{mit}^{MI} \frac{CP - CP_{mit}}{1 - CP_{mit}} \tag{7}$$



Similar linear expressions are used for representing enrichment of the actomyosin cortex and reduction in cell adhesion with neighboring cells in mitotic phase (Table 1).

Cells in the mitotic (M) phase—which lasts approximately 30 minutes—divide into two daughter cells (Fig 2). Cytokinesis occurs when CP approaches 1 and is modeled by separating internal and membrane nodes of the mother cell into two sets representing daughter cells. The axis of division is implemented perpendicular to the cell's longest axis, following Hertwig's rule [63], prior to the initiation of mitotic rounding [64]. New membrane nodes are created along the cleavage plane for each daughter cell. After division, parameters for nodes of each daughter cell are set back to calibrated interphase values and CP is set to zero for both daughter cells.

Membrane nodes in the beginning of a simulation are arranged in a circle for each cell, and internal nodes are randomly placed within each cell (Fig 3A). After initialization, internal nodes rapidly rearrange in every cell and cells self-organize into a polygonal network, similar to the experimentally observed cell packing geometry of epithelia (Fig 3B). Cells in a simulation constantly grow, divide and interact with each other resulting in a detailed dynamic representation of the developing epithelial tissue (see Fig 3C and 3D and S1 Video).

## Results

### Model calibration

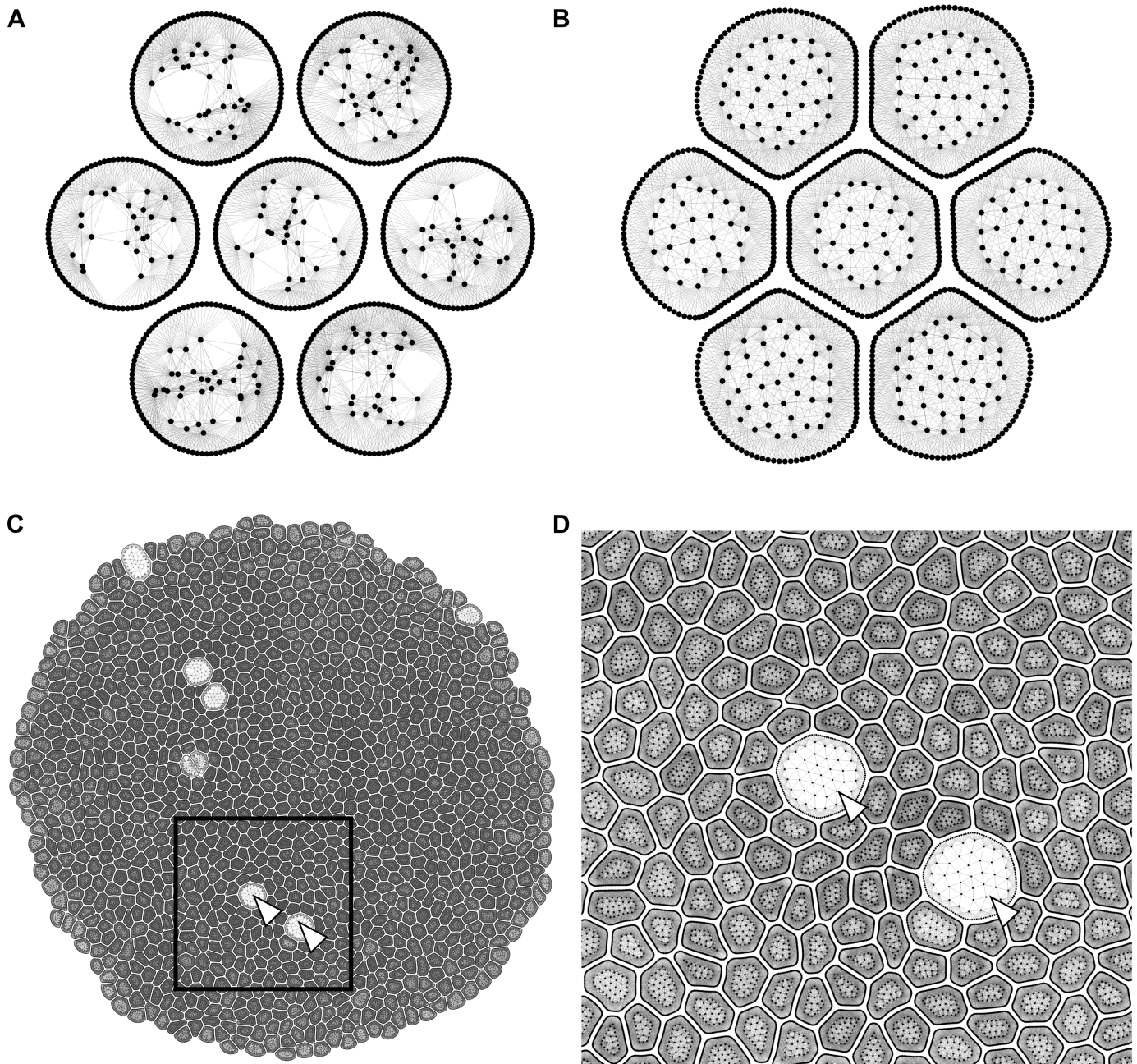
Model parameters were calibrated using experimental data for the third instar *Drosophila* wing disc, which is a powerful model for studying organ formation [24,65] (Figs 4 and 5). Experimental values for similar cell lines were used to calibrate the model parameters when experimental data for *Drosophila* wing disc were not available.

The mechanical stiffness of the actomyosin cortex ( $k_{inter}^{Stiff}$ ) was calibrated using the modulus of elasticity ( $E$ ) of a single cell [66].  $E$  was experimentally obtained by applying forces to opposite sides of a cell and measuring cell deformation [67,68]. This experiment was reproduced in the Epi-Scale model simulation by applying a linearly increasing force to membrane nodes on both sides of a simulated cell and calculating cell's deformation (Fig 4A–4A"). The slope of the graph of the stress versus strain (Fig 4C) provides elasticity of the cell. The elasticity of a single cell is calibrated by adjusting linear stiffness of springs representing interactions between membrane nodes of a single cell. We have chosen value of the ( $k_{inter}^{Stiff}$ ) so that that  $E = 19 \text{ kPa}$ , which is within the biological range of 10 – 55 kPa measured for epithelial cells [67,68].

The cell-cell adhesive force ( $F_{adh}$ ) is experimentally determined by measuring the force needed to detach two adhered cells from each other. This experiment is reproduced *in silico* by applying forces to membrane nodes on either side of two adhered cells, and measuring the force needed to separate them (Fig 4B–4B"). The strength of the cell-cell adhesion for the *Drosophila* epithelium has not been measured yet.  $k_{inter}^{Adh}$  was calibrated so that 10 nN/ $\mu\text{m}$  was required to detach two adhered cells from each other, based on published data for S180 cells transfected to express E-cadherin [69] and data from epithelial MDCK cells, which have adherens junctions similar to those along the apical surface of the *Drosophila* epithelium [70] (Fig 4D). (More details about cell-cell adhesion calibration are provided in S5 Appendix.)

Cells in the wing disc have spatially-uniform growth-rates that slow down as the tissue approaches its final size [56]. The growth rate in the Epi-Scale model described by Eq (5) was calibrated (Table 3) so that the number of cells in the model simulations matched experimental data for the wing disc pouch [56] (Fig 4E).

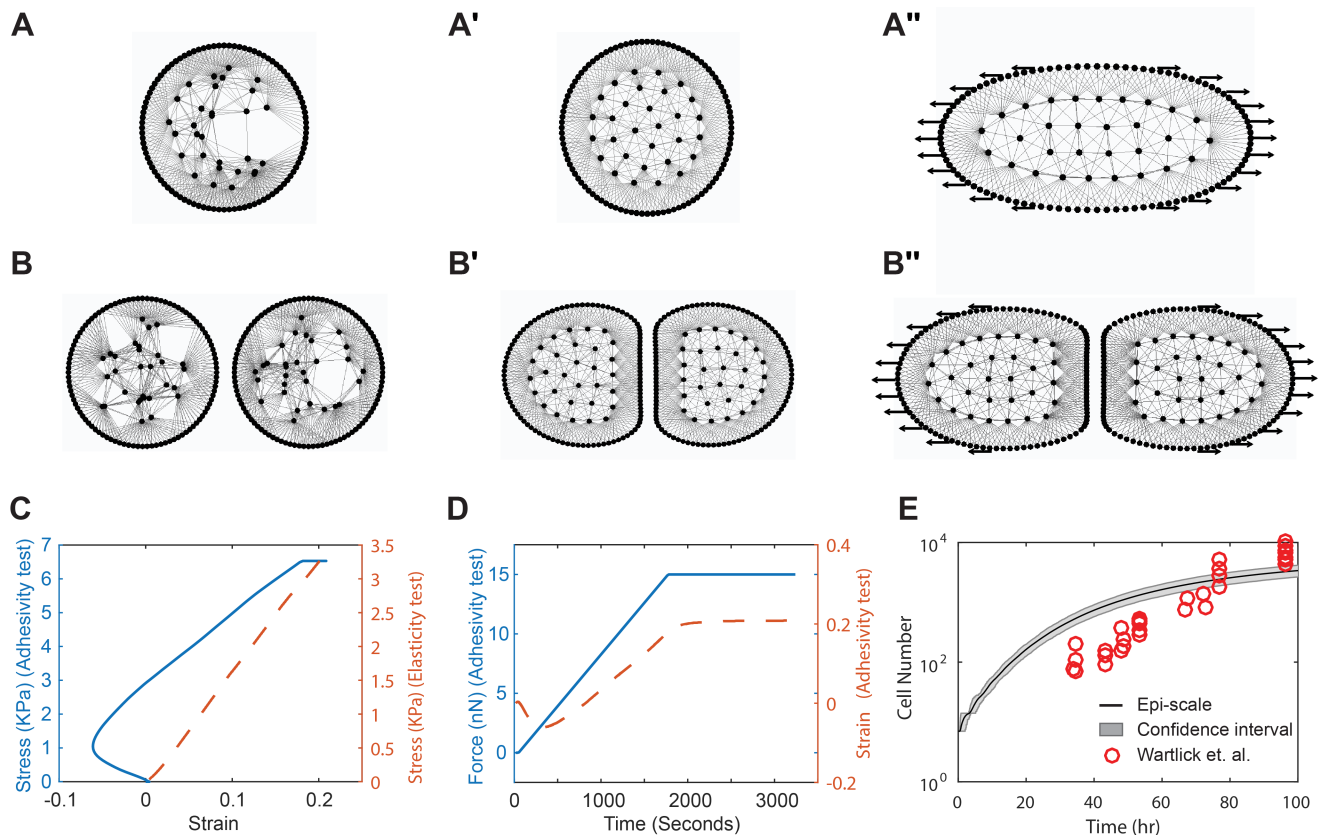
During mitosis, apical cell area and roundness increase compared to their interphase values (Fig 5A–5A"). This correlates with an observed increase in the cell's internal pressure, cortical stiffness and decrease of intercellular adhesion marked by noticeable reduction in E-Cadherin.



**Fig 3. Initial conditions and sample simulation output.** (A) Initial condition of a simulation with seven initially non-adherent circular cells. Each cell starts with 100 membrane elements and 20 internal elements. (B) Initial formation of an epithelial sheet after cells adhere to each other. An equilibrium distribution of internal nodes is reached for each cell. (C) Epithelial sheet after 55 hours of proliferation. (D) Enlarged view of the selected region showing different cell shapes and sizes due to interactions between cells. The large cell is undergoing mitotic rounding (MR).

<https://doi.org/10.1371/journal.pcbi.1005533.g003>

To simulate this, parameters of  $E^I$  and  $E^{MI}$ , which can be changed to increase the cytoplasmic pressure ( $\Delta P$ ) (Section 4 in [S3 Appendix](#)), cortical stiffness ( $k^{Stiff}$ ), and adhesivity ( $k^{Adh}$ ) are varied from their interphase values to their mitotic values ([Fig 5b–5d](#)). Values were selected such that the ratio of mitotic cell area to interphase cell area ( $A_{mit}/A_{inter}$ ) and cell roundness ( $R_{norm}$ ) were calibrated to data collected on mitotic cells from the wing disc ([Fig 5E and 5F](#)). The methods for calculating of area, roundness, and pressure are described in [S3 Appendix](#).

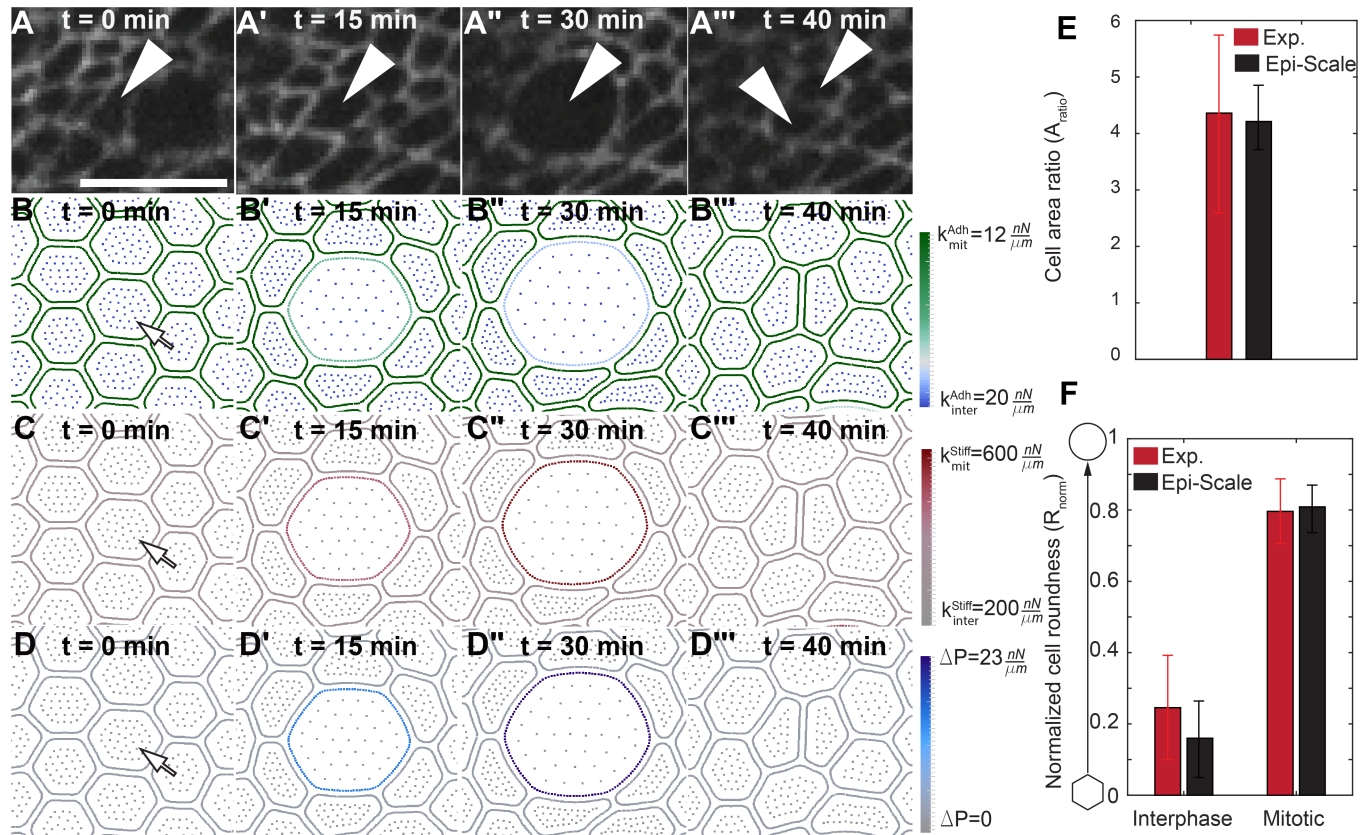


**Fig 4. Calibration of model parameters through simulations.** (A-A'') Calibration test to determine parameters for cell elasticity, analogous to experimental single cell stretching tests [66], (A) Initial condition  $t = 0$ , (A') 6 minutes after simulation with no force applied, (A'') after 72 minutes cell is completely on tension (B-B'') Cell adhesion test, analogous to experimental tests [69] for calibrating the level of cell-cell adhesion between adjacent cells. (B) Initial condition  $t = 0$ , (B') 6 minutes after simulation begins with no force applied, (B'') after 72 minutes, 15 nN force is applied. (C) Stress versus strain for single cell calibration (red line) and stress versus strain for calibrating the level of adhesivity between the two cells (blue line) [69,70]. Initial negative strain in adhesivity test is due to strong adhesion between two cells. (D) Force and strain as a function of time for adhesivity test. (E) Tissue growth rate calibration by comparing with the experimental data by Wartlick et al. [56]. The 95% confidence interval for the growth rate results is shown in grey color.

<https://doi.org/10.1371/journal.pcbi.1005533.g004>

## Tissue topology emerges from cell self-organization driven by cellular mechanics

After calibration of the model parameters at the cellular scale, validation simulations were run to determine whether the cellular-scale calibration was sufficient to recapitulate expected topological properties of the tissue (Fig 6A) [71,72]. One metric for tissue topology is the distribution of cell neighbor numbers, or polygon class distribution. The polygon class distribution in Epi-Scale simulations approaches to steady state after 35 hours (Fig 6B). This steady state distribution matches the distributions observed in experiments with the wing disc and other epithelial systems [43] (Fig 6C) as well as obtained using other computational models such as vertex based model [38]. We also confirmed that simulations recapitulate experimental observations [63] that cells entering mitosis on average gain a cell bond, increasing the number of neighbors by one (Fig 6D, inset). Further, we investigated the effects of varying cellular modulus of elasticity on the polygon class distribution in the range reported values of epithelial cells (10 – 55 kPa) [67]. The results show that the polygon class distribution is insensitive to the changes in the elasticity values (Fig 6E). This is a reasonable result since the polygon class



**Fig 5. Dynamics of mitotic rounding.** (A-A''') Time-lapse confocal images of cell undergoing mitosis in the wing disc with E-cadherin:GFP-labeled cell boundaries. Scale bar is 5  $\mu\text{m}$ . Arrows indicate daughter cells. (B-D''') Time series from Epi-Scale simulation of a cell undergoing mitosis and division with illustration of: (B-B''') adhesive spring stiffness, (C-C''') cortical spring stiffness, and (D-D''') internal pressure, respected to their interphase values. (E-F) Comparison of size and roundness of mitotic cells with experimental data for the *Drosophila* wing disc. Arrow represents mitotic cell in B-D. A t-test comparing the means of computational simulations and experiments result in  $p = 0.72$  for cell area ratio and  $p = 0.76$  for normalized roundness of mitotic cells.

<https://doi.org/10.1371/journal.pcbi.1005533.g005>

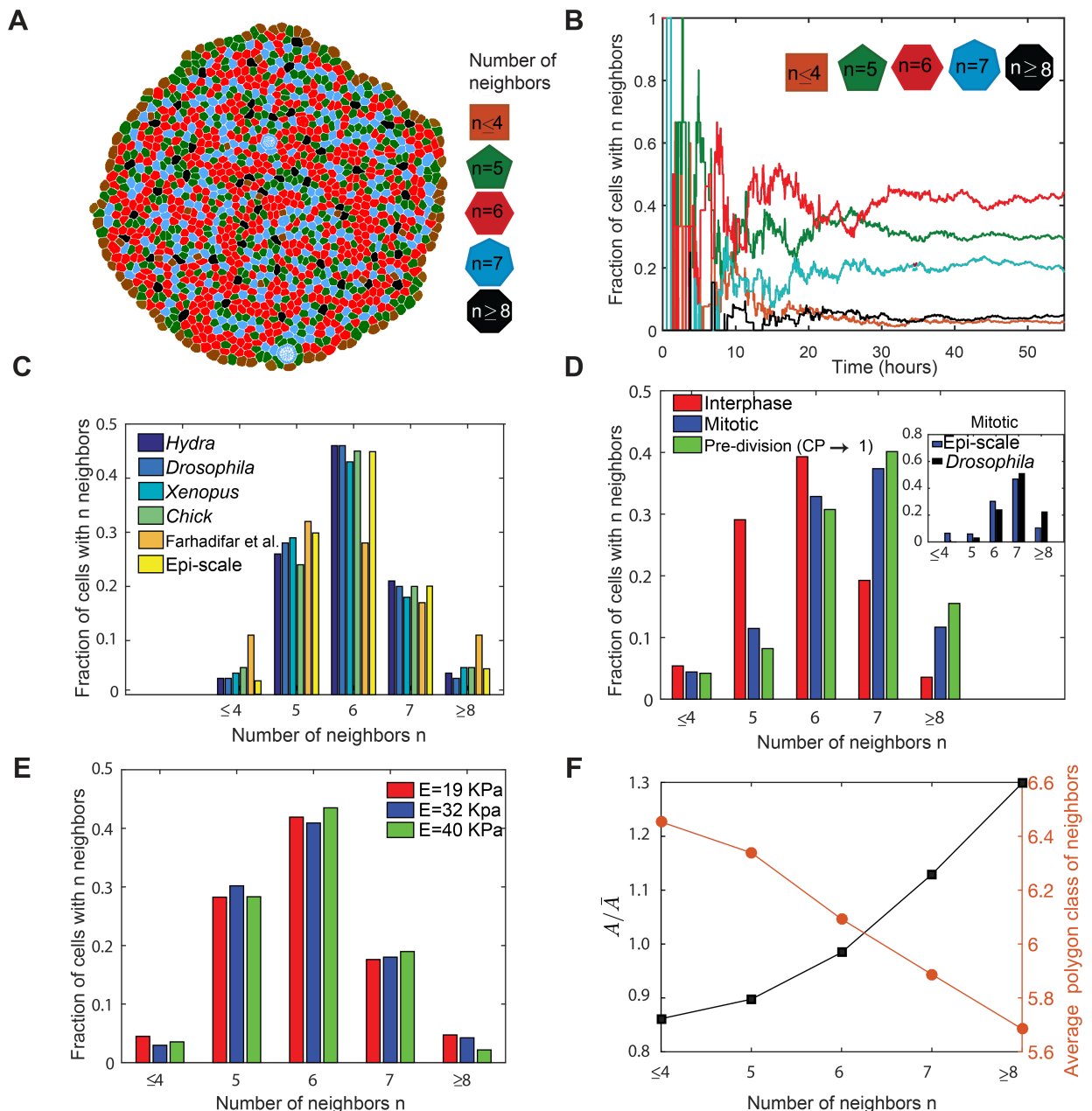
distribution is strongly conserved among a wide range of epithelial tissues (Fig 6C). Therefore, cellular modulus of elasticity observed for the range of epithelial cells does not impact the polygon class distribution.

We further verified that the polygon class distribution of the simulated tissue satisfies three laws describing topological relationships: Euler's law, Lewis law, and Aboav-Weaire Law. Euler's law states that cells forming a packed sheet should be hexagonal on average [72,73].

**Table 3. Implementation parameters.**

Parameter	Value	Reference
$\eta$	36 nN.s/ $\mu\text{m}$	[56]
$g_{0_{min}}$ & $g_{0_{max}}$	$2.0 \times 10^{-3}$ & $4 \times 10^{-3}$ P/s	[56]
$k_g$	$4.0 \times 10^{-4}$ 1/s	[56]
$T_{mit}$	30 min	[63]
$N_{(CP=0)}^I$ & $N_{CP=1}^I$	20 & 40 nodes	Based on desired resolution to model a cell
$N_{(CP=0)}^M$ & $N_{max}^M$	100 & 200 nodes	Based on desired resolution to model a cell
$\Delta t$	0.003 second	Based on stability of algorithm

<https://doi.org/10.1371/journal.pcbi.1005533.t003>



**Fig 6. Emergence of tissue-level statistics from model simulations.** (A) Sample simulation output showing cells with different numbers of neighbors as different colors (B) Simulations initiated from seven cells reaches steady-state polygon-class distribution after approximately 35 hours of cell proliferation. (C) Comparison of polygon class distributions obtained by Epi-Scale model with various biological systems (data extracted from [79]) and a vertex based model by Farhadifar et al. [38]. (D) Polygon class distribution of cells at different stages of growth, and comparison of mitotic cells distribution with *Drosophila* wing disc experimental data [63]. (E) Polygon class distribution of cells at different level of cell's elasticity. The results do not show sensitivity in the range of reported elasticity of epithelial cells [67]. (F) Average relative area ( $A/\bar{A}$ ), and average polygon class of neighboring cells verifying that simulation results satisfy Lewis law and Aboav-Weaire law.  $A$  is the apical area of cell and  $\bar{A}$  is the average apical area of the population of cells.

<https://doi.org/10.1371/journal.pcbi.1005533.g006>

The Lewis law states that cells with more neighbors should have larger normalized area [73]. The Aboav-Weaire law indicates that the average polygon class of neighbors of each cell decreases as the cell's polygon class increases [74]. Simulation results obtained using calibrated model, show the average side of cells to be equal to 5.98 for interphase and mitotic cells, 5.80

for interphase cells, and 6.49 for mitotic cells. Model simulations also satisfy two other laws as shown in Fig 6D when interphase cells are counted.

## Impacts of adhesion, stiffness, and cytoplasmic pressure on mitotic rounding

The Epi-Scale model is suitable for generating and testing hypotheses regarding mechanical mechanisms of MR because it can represent non-polygonal shapes of cells. Simulations were conducted to predict the relative contributions of different cell properties to the relative area ratio ( $A_{mit}/A_{inter}$ ) and normalized roundness ( $R_{norm}$ ) of mitotic cells as calculated in S3 Appendix. Parameter values were selected in a three-level full factorial design (FFD) to investigate the relationships between the mitotic parameters of the model ( $k_{mit}^{Adh}$ ,  $k_{mit}^{Stiff}$ , and  $\Delta P$ ) and mitotic rounding ( $A_{ratio}$  and  $R_{norm}$ ) (Fig 7A, S9 Appendix). A regression model was fit to the results of the FFD, and showed that for large changes,  $\Delta P$  was the primary regulator of  $A_{ratio}$ , and  $k_{mit}^{Adh}$  and  $k_{mit}^{Stiff}$  were the primary regulators of  $R_{norm}$  (Fig 7C and 7D).

A region of parameter space was selected where the error in mitotic rounding measurements ( $A_{ratio}$  and  $R_{norm}$ ) was minimized as shown in the Pareto front (Fig 7B, 7E and 7F, S9 Appendix). The region of parameter space closest to experimental values of cell area and roundness was explored with a central composite design (CCD) as a second iteration to more precisely determine the relative contribution of each physical parameter on MR within experimentally observed ranges (Fig 7A) [75]. This result quantitatively defines the predicted variation in mitotic cell-cell adhesion, stiffness and pressure that explains the variation in mitotic area ratio and rounding observed in mitotic epithelial cells. To keep mitotic rounding within the range of variation observed,  $\Delta P$  must be tightly regulated (~19% variation about the calibrated point), whereas the requirements for  $k_{mit}^{Adh}$  and  $k_{mit}^{Stiff}$  are less stringent ~120% and ~67% respectively.

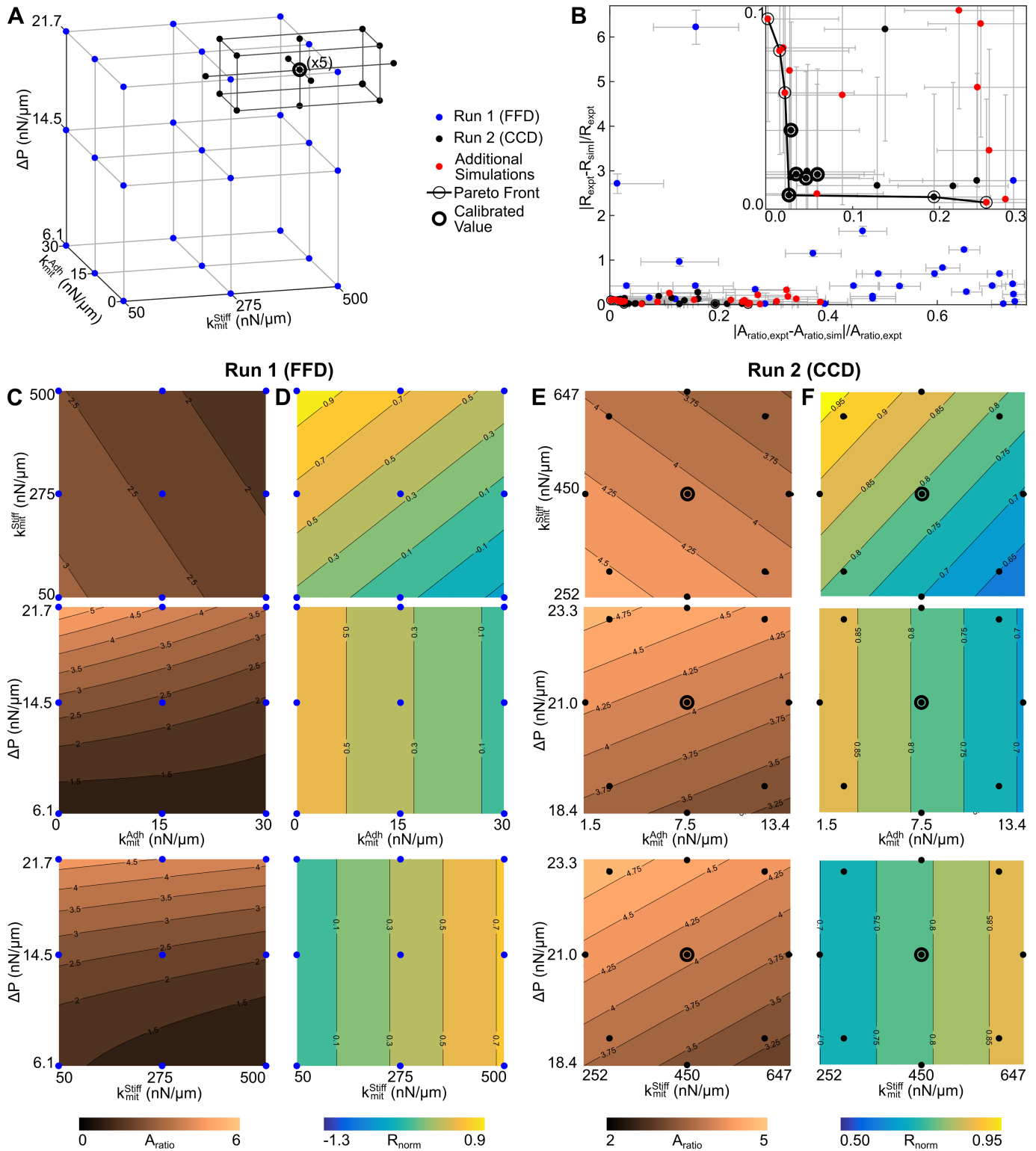
Model reduction (S10 Appendix) revealed that regulation of mitotic rounding is approximated well by linear regression models for parameter evaluation resulting in physiological values of  $A_{ratio}$  and  $R_{norm}$  for *Drosophila* wing disc cells (Fig 5). This suggests that regulation is in the linear regime, which is a good attribute for tightly controlled processes. Since interaction terms are not significant, cell mechanical properties contribute to cell shape changes independently. Mitotic pressure was found to be the primary regulator of mitotic cell area (Fig 7E), while both cell-cell adhesion and cortical stiffness reduced area expansion slightly. An increase in cell-cell adhesion was shown to reduce roundness whereas increased cortical stiffness promoted roundness for small perturbations (Fig 7F).

To define the relative impacts of mechanical properties on  $A_{ratio}$  and  $R_{norm}$  under physiological or “wild-type” conditions, local sensitivity analysis (Fig 8A and 8B, S11 Appendix) was performed after application of the stepwise model reduction (S10 Appendix). Within the physiologically relevant domain of the parameter space, pressure strongly regulates mitotic area expansion but does not have a strong impact on the shape roundness (Figs 7E and 8A). Stiffness and adhesion are important in tuning the degree of mitotic roundness (Figs 7F and 8B).

These results are summarized in the form of the mechanical sensitivity model in Fig 8C, analogous to protein interaction networks. This model describes how small variations in each cellular mechanical property impact relative mitotic area expansion and roundness.

## Discussion

The roles of pressure, stiffness and adhesion in mitotic cells in single cell culture, in suspension or attached to substrates, are still not resolved in the experimental literature and largely unexplored in the tissue context [11,14]. We described in this paper a novel multi-scale sub-cellular



**Fig 7. Response surface method analysis of mechanical properties on regulating mitotic expansion and mitotic rounding.** (A) Schematic of initial full factorial design (FFD) for exploring parameter space, and subsequent central composite design (CCD) for developing the response surface models shown in (C, D). (B) Pareto front indicating computational model parameter values with lowest difference with experimental data for area ratio and normalized roundness. The parameter range defined by the CCD (Run 2) spans parameter variation where the error between experiments and simulations is within the propagated uncertainty of measurements and simulations. Error bars are the standard error of means of the normalized

deviation between experiments and simulations. (C-D) Contour plots for FFD experiment where (C) shows the area ratio ( $A_{ratio} = A_{mit}/A_{inter}$ ) and (D) shows the normalized roundness ( $R_{norm}$ ). (E-F) Contour plots for CCD experiment where (E) shows the area ratio ( $A_{ratio}$ ) and (F) shows the normalized roundness ( $R_{norm}$ ).

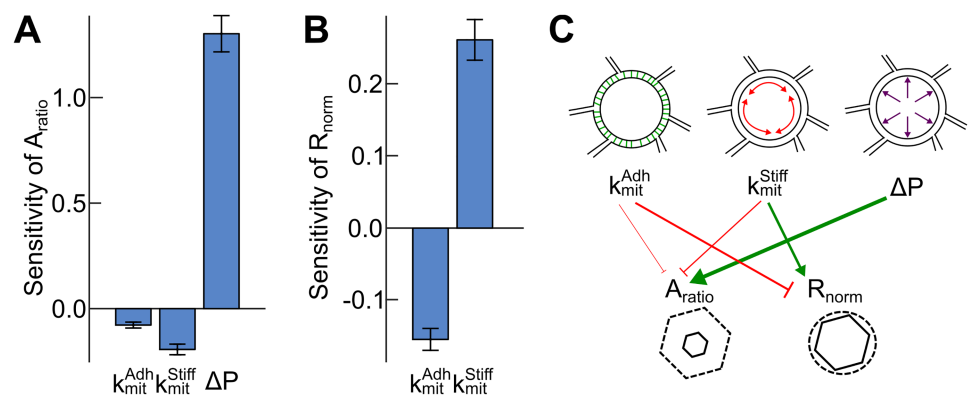
<https://doi.org/10.1371/journal.pcbi.1005533.g007>

model, called Epi-Scale, for simulating mechanical and adhesive properties of cells in the developing columnar epithelium of the wing disc, which consists of a single layer of cells. The model approximates the tissue as a 2D surface since the majority of the contractile and adhesive forces are localized at the apical surface of the epithelium (Fig 1B).

Parameter ranges for the computational model were obtained by calibrating the model using single cell stretching experiments, experiments on stretching a pair of cells adhered to each other, dynamic experimental measurements of the area and roundness of mitotic cells, and the tissue growth rate of the *Drosophila* wing disc. Cell-cell adhesion and cell elasticity were calibrated using data from experiments with single cells. The calibrated model was verified by successfully reproducing emergent properties of developing tissue such as the polygon class distributions for both interphase and mitotic cells without additional calibration or parameter tuning.

Epi-Scale enables the systematic generation and testing of new hypotheses about the underlying mechanisms governing mitotic rounding within the developing tissue microenvironment. Regression analysis of predictive simulations provided complete assessment of the quantitative contributions of cytoplasmic pressure, cell-cell adhesion and cortical stiffness to mitotic cell rounding and expansion (Figs 7 and 8). Mitotic cell area expansion was shown to be largely driven by regulation of cytoplasmic pressure. Surprisingly, the variability in mitotic roundness within physiological ranges was shown to be primarily driven by varying cell-cell adhesivity and cortical stiffness, rather than pressure.

It is currently challenging to target only dividing cells in a tissue. One experimental approach that might be used in the future for testing the model predictions would be to regulate the expression of E-cadherin, Myosin-II, and osmotic channel antagonists under a Cyclin



**Fig 8. Quantitation of relative sensitivity of mitotic area expansion and roundness to adhesion, stiffness and pressure changes within the physiological property space.** Sensitivity estimation of (A) ( $A_{mit}/A_{inter}$ ) and (B)  $R_{norm}$  to small perturbation in the three mitotic parameter set points,  $k_{mit}^{Adh}$ ,  $k_{mit}^{Stiff}$ , and  $\Delta P$ . Sensitivity was estimated from the reduced RSM model described in Fig 7C–7F after stepwise model regression (p-value cutoff of 0.01). (C) Proposed mechanical regulatory network defined for “physiological ranges” within the parameter ranges defined by the CCD (Run 2, Fig 7A) that summarizes the local sensitivity analysis. Cell adhesivity, an increase in  $k_{mit}^{Adh}$ , slightly inhibits area expansion and strongly inhibits roundness. Membrane stiffness,  $k_{mit}^{Stiff}$  inhibits area expansion and promotes roundness. Mitotic area expansion is most sensitive to variation in the mitotic pressure change ( $\Delta P$ ), but pressure has little effect on roundness over the calibrated physiological ranges.

<https://doi.org/10.1371/journal.pcbi.1005533.g008>



B promoter, active during mitosis, resulting in modulation only in dividing cells [76,77]. Alternatively, opto-genetic methods could be employed to selectively regulate individual cell properties [78].

The simulation results have also shown that increases of the mitotic rounding under super-physiological pressure (greater than calibrated values) could result in cell-cell rearrangements (T1 transitions) of the neighboring cells, due to rapid increase of the apical surface of the mitotic cell (S7 Appendix). This indicates that Epi-Scale platform could be used for future detailed studies of epithelial morphogenesis.

We have shown that our model simulations provide new insights into the individual contributions of cell properties to MR. Determining which aspects of mitotic rounding are most sensitive to perturbed cell properties in dense tissues, including solid tumors, can help direct future efforts to identify cellular processes that specifically block mitosis in highly proliferative tumors, but that are not damaging to non-proliferative cells [14]. As a flexible computational modeling platform, Epi-Scale can be extended to simulate a wide range of multi-cellular processes, including epithelial morphogenesis, wounding healing and blood clot formation.

## Supporting information

**S1 Appendix. Computational implementation and computational cost of the Epi-scale model.**

(PDF)

**S2 Appendix. Potential energy functions used in the Epi-scale model.**

(PDF)

**S3 Appendix. Metrics for determining polygon class, roundness of cell shape and internal pressure of a cell.**

(PDF)

**S4 Appendix. Detailed analysis of the Aboav-Weaire law.**

(PDF)

**S5 Appendix. Calibration of the adhesion between neighbouring cells.**

(PDF)

**S6 Appendix. Transgenic fly lines, microscopy and image processing.**

(PDF)

**S7 Appendix. Mitotic rounding effects on cell-cell rearrangements.**

(PDF)

**S8 Appendix. Parameters used in Epi-Scale for S1 and S2 Videos.**

(PDF)

**S9 Appendix. Response surface methodology.**

(PDF)

**S10 Appendix. Stepwise regression for model reduction.**

(PDF)

**S11 Appendix. Sensitivity analysis.**

(PDF)

**S12 Appendix. Removal of an outlier.**

(PDF)

**S1 Video. Polygon class distribution study.**

(MP4)

**S2 Video. Mitotic cells at high pressure lead to T1 transitions around the mitotic cells.**

(MP4)

## Acknowledgments

The authors acknowledge support from the Notre Dame Integrated Imaging Facility. They thank members of the Zartman's lab for critical feedback on manuscript drafts as well as Luis Lazalde for technical analysis of segmented cells.

## Author Contributions

**Conceptualization:** MA JJZ ZX.

**Data curation:** AN WS PAB AA CN.

**Formal analysis:** MA JJZ AN PAB AA CN ZX.

**Funding acquisition:** MA JJZ ZX.

**Investigation:** MA JJZ AN WS PAB AA CN ZX.

**Methodology:** MA JJZ AN WS AA ZX.

**Project administration:** MA JJZ ZX.

**Resources:** MA JJZ ZX.

**Software:** WS AN AA ZX PAB MA.

**Supervision:** MA JJZ ZX AN.

**Validation:** MA JJZ AN WS PAB AA CN ZX.

**Visualization:** MA JJZ AN PAB AA CN ZX.

**Writing – original draft:** AN JJZ MA WS PAB AA ZX CN.

**Writing – review & editing:** AN JJZ MA PAB AA ZX CN.

## References

1. Gumbiner B. Structure, biochemistry, and assembly of epithelial tight junctions. *Am J Physiol—Cell Physiol.* 1987; 253: C749–C758.
2. Fristrom D. The cellular basis of epithelial morphogenesis. A review. *Tissue Cell.* 1988; 20: 645–690. [https://doi.org/10.1016/0040-8166\(88\)90015-8](https://doi.org/10.1016/0040-8166(88)90015-8) PMID: 3068832
3. Lecuit T, Lenne P-F. Cell surface mechanics and the control of cell shape, tissue patterns and morphogenesis. *Nat Rev Mol Cell Biol.* 2007; 8: 633–644. <https://doi.org/10.1038/nrm2222> PMID: 17643125
4. Ramkumar N, Baum B. Coupling changes in cell shape to chromosome segregation. *Nat Rev Mol Cell Biol.* 2016; advance online publication. <https://doi.org/10.1038/nrm.2016.75> PMID: 27353479
5. Miller SJ, Lavker RM, Sun T-T. Interpreting epithelial cancer biology in the context of stem cells: tumor properties and therapeutic implications. *Biochim Biophys Acta.* 2005; 1756: 25–52. <https://doi.org/10.1016/j.bbcan.2005.07.003> PMID: 16139432
6. Hanahan D, Weinberg RA. The Hallmarks of Cancer. *Cell.* 2000; 100: 57–70. [https://doi.org/10.1016/S0092-8674\(00\)81683-9](https://doi.org/10.1016/S0092-8674(00)81683-9) PMID: 10647931
7. Cadart C, Zlotek-Zlotkiewicz E, Le Berre M, Piel M, Matthews HK. Exploring the Function of Cell Shape and Size during Mitosis. *Dev Cell.* 2014; 29: 159–169. <https://doi.org/10.1016/j.devcel.2014.04.009> PMID: 24780736

8. Strangeways TSP. Observations on the Changes Seen in Living Cells during Growth and Division. *Proc R Soc Lond Ser B Contain Pap Biol Character*. 1922; 94: 137–141.
9. McConnell CH. Mitosis in Hydra. Mitosis in the Ectodermal Epithelio-Muscular Cells of Hydra. *Biol Bull*. 1933; 64: 86–95. <https://doi.org/10.2307/1537502>
10. Sorce B, Escobedo C, Toyoda Y, Stewart MP, Cattin CJ, Newton R, et al. Mitotic cells contract actomyosin cortex and generate pressure to round against or escape epithelial confinement. *Nat Commun*. 2015; 6: 8872. <https://doi.org/10.1038/ncomms9872> PMID: 26602832
11. Stewart MP, Helenius J, Toyoda Y, Ramanathan SP, Muller DJ, Hyman AA. Hydrostatic pressure and the actomyosin cortex drive mitotic cell rounding. *Nature*. 2011; 469: 226–230. <https://doi.org/10.1038/nature09642> PMID: 21196934
12. Stewart MP, Toyoda Y, Hyman AA, Müller DJ. Tracking mechanics and volume of globular cells with atomic force microscopy using a constant-height clamp. *Nat Protoc*. 2012; 7: 143–154. <https://doi.org/10.1038/nprot.2011.434> PMID: 22222789
13. Champion L, Linder MI, Kutay U. Cellular reorganization during mitotic entry. *Trends Cell Biol*. 2017; 27: 26–41. <https://doi.org/10.1016/j.tcb.2016.07.004> PMID: 27528558
14. Zlotek-Zlotkiewicz E, Monnier S, Cappello G, Berre ML, Piel M. Optical volume and mass measurements show that mammalian cells swell during mitosis. *J Cell Biol*. 2015; 211: 765–774. <https://doi.org/10.1083/jcb.201505056> PMID: 26598614
15. Brodland GW. How computational models can help unlock biological systems. *Semin Cell Dev Biol*. 2015; 47–48: 62–73. <https://doi.org/10.1016/j.semcdb.2015.07.001> PMID: 26165820
16. Marin-Riera M, Brun-Usan M, Zimm R, Välikangas T, Salazar-Ciudad I. Computational modeling of development by epithelia, mesenchyme and their interactions: a unified model. *Bioinformatics*. 2016; 32: 219–225. <https://doi.org/10.1093/bioinformatics/btv527> PMID: 26342230
17. Shinbrot T, Chun Y, Caicedo-Carvajal C, Foty R. Cellular morphogenesis in silico. *Biophys J*. 2009; 97: 958–967. <https://doi.org/10.1016/j.bpj.2009.05.020> PMID: 19686642
18. Mao Y, Tournier AL, Hoppe A, Kester L, Thompson BJ, Tapon N. Differential proliferation rates generate patterns of mechanical tension that orient tissue growth. *EMBO J*. 2013; 32: 2790–2803. <https://doi.org/10.1038/emboj.2013.197> PMID: 24022370
19. Gord A, Holmes WR, Dai X, Nie Q. Computational modelling of epidermal stratification highlights the importance of asymmetric cell division for predictable and robust layer formation. *J R Soc Interface*. 2014; 11: 20140631. <https://doi.org/10.1098/rsif.2014.0631> PMID: 25100322
20. Kursawe J, Brodskiy PA, Zartman JJ, Baker RE, Fletcher AG. Capabilities and Limitations of Tissue Size Control through Passive Mechanical Forces. *PLoS Comput Biol*. 2015; 11: e1004679. <https://doi.org/10.1371/journal.pcbi.1004679> PMID: 26713738
21. Anderson MJ. *RSM Simplified: Optimizing Processes Using Response Surface Methods for Design of Experiments*. New York, New York: Productivity Press; 2005.
22. Zartman J, Restrepo S, Basler K. A high-throughput template for optimizing *Drosophila* organ culture with response-surface methods. *Development*. 2013; 140: 667–674. <https://doi.org/10.1242/dev.088872> PMID: 23293298
23. Fletcher AG, Osterfield M, Baker RE, Shvartsman SY. Vertex models of epithelial morphogenesis. *Biophys J*. 2014; 106: 2291–2304. <https://doi.org/10.1016/j.bpj.2013.11.4498> PMID: 24896108
24. Buchmann A, Alber M, Zartman JJ. Sizing it up: The mechanical feedback hypothesis of organ growth regulation. *Semin Cell Dev Biol*. 2014; <https://doi.org/10.1016/j.semcdb.2014.06.018> PMID: 25020200
25. Osborne JM, Fletcher AG, Pitt-Francis JM, Maini PK, Gavaghan DJ. Comparing individual-based approaches to modelling the self-organization of multicellular tissues. *bioRxiv*. 2016; 074351.
26. Camley BA, Rappel W-J. Physical models of collective cell motility: from cell to tissue. *J Phys Appl Phys*. 2017; 50: 113002. <https://doi.org/10.1088/1361-6463/aa56fe>
27. Mirams GR, Arthurs CJ, Bernabeu MO, Bordas R, Cooper J, Corrias A, et al. Chaste: An Open Source C++ Library for Computational Physiology and Biology. *PLoS Comput Biol*. 2013; 9: e1002970. <https://doi.org/10.1371/journal.pcbi.1002970> PMID: 23516352
28. Chen N, Glazier JA, Izaguirre JA, Alber MS. A parallel implementation of the Cellular Potts Model for simulation of cell-based morphogenesis. *Comput Phys Commun*. 2007; 176: 670–681. <https://doi.org/10.1016/j.cpc.2007.03.007> PMID: 18084624
29. Chaturvedi R, Huang C, Kazmierczak B, Schneider T, Izaguirre JA, Glimm T, et al. On multiscale approaches to three-dimensional modelling of morphogenesis. *J R Soc Interface*. 2005; 2: 237–253. <https://doi.org/10.1098/rsif.2005.0033> PMID: 16849182
30. Glazier JA, Graner F. Simulation of the differential adhesion driven rearrangement of biological cells. *Phys Rev E*. 1993; 47: 2128–2154. <https://doi.org/10.1103/PhysRevE.47.2128>

31. Graner F, Glazier JA. Simulation of biological cell sorting using a two-dimensional extended Potts model. *Phys Rev Lett.* 1992; 69: 2013. <https://doi.org/10.1103/PhysRevLett.69.2013> PMID: [10046374](https://pubmed.ncbi.nlm.nih.gov/10046374/)
32. Brodland GW, Viens D, Veldhuis JH. A new cell-based FE model for the mechanics of embryonic epithelia. *Comput Methods Biomech Biomed Engin.* 2007; 10: 121–128. <https://doi.org/10.1080/10255840601124704> PMID: [18651278](https://pubmed.ncbi.nlm.nih.gov/18651278/)
33. Zhao J, Naveed H, Kachalo S, Cao Y, Tian W, Liang J. Dynamic mechanical finite element model of biological cells for studying cellular pattern formation. 2013 35th Annual International Conference of the IEEE Engineering in Medicine and Biology Society (EMBC). 2013. pp. 4517–4520. <https://doi.org/10.1109/EMBC.2013.6610551> PMID: [24110738](https://pubmed.ncbi.nlm.nih.gov/24110738/)
34. Rejniak KA, Dillon RH. A single cell-based model of the ductal tumour microarchitecture. *Comput Math Methods Med.* 2007; 8: 51–69. <https://doi.org/10.1080/17486700701303143>
35. Rejniak KA. An immersed boundary framework for modelling the growth of individual cells: An application to the early tumour development. *J Theor Biol.* 2007; 247: 186–204. <https://doi.org/10.1016/j.jtbi.2007.02.019> PMID: [17416390](https://pubmed.ncbi.nlm.nih.gov/17416390/)
36. Okuda S, Inoue Y, Adachi T. Three-dimensional vertex model for simulating multicellular morphogenesis. *Biophys Physicobiology.* 2015; 12: 13–20.
37. Osterfield M, Du X, Schüpbach T, Wieschaus E, Shvartsman SY. Three-dimensional epithelial morphogenesis in the developing *Drosophila* egg. *Dev Cell.* 2013; 24: 400–410. <https://doi.org/10.1016/j.devcel.2013.01.017> PMID: [23449472](https://pubmed.ncbi.nlm.nih.gov/23449472/)
38. Farhadifar R, Röper J-C, Aigouy B, Eaton S, Jülicher F. The Influence of Cell Mechanics, Cell-Cell Interactions, and Proliferation on Epithelial Packing. *Curr Biol.* 2007; 17: 2095–2104. <https://doi.org/10.1016/j.cub.2007.11.049> PMID: [18082406](https://pubmed.ncbi.nlm.nih.gov/18082406/)
39. Aegerter-Wilmsen T, Heimlicher MB, Smith AC, de Reuille PB, Smith RS, Aegerter CM, et al. Integrating force-sensing and signaling pathways in a model for the regulation of wing imaginal disc size. *Development.* 2012; 139: 3221–3231. <https://doi.org/10.1242/dev.082800> PMID: [22833127](https://pubmed.ncbi.nlm.nih.gov/22833127/)
40. Jessica CY, Fernandez-Gonzalez R. Quantitative modelling of epithelial morphogenesis: integrating cell mechanics and molecular dynamics. *Seminars in Cell & Developmental Biology.* Elsevier; 2016. <http://www.sciencedirect.com/science/article/pii/S1084952116302348>
41. Sussman DM. cellGPU: massively parallel simulations of dynamic vertex models. *ArXiv170202939 Cond-Mat Physicsphysics.* 2017; <http://arxiv.org/abs/1702.02939>
42. Newman TJ. Modeling Multicellular Structures Using the Subcellular Element Model. In: Anderson DARA, Chaplain PMAJ, Rejniak DKA, editors. *Single-Cell-Based Models in Biology and Medicine.* Birkhäuser Basel; 2007. pp. 221–239. [http://link.springer.com/chapter/10.1007/978-3-7643-8123-3\\_10](http://link.springer.com/chapter/10.1007/978-3-7643-8123-3_10)
43. Sandersius SA, Chuai M, Weijer CJ, Newman TJ. Correlating Cell Behavior with Tissue Topology in Embryonic Epithelia. *PLoS ONE.* 2011; 6: e18081. <https://doi.org/10.1371/journal.pone.0018081> PMID: [21559520](https://pubmed.ncbi.nlm.nih.gov/21559520/)
44. Sweet CR, Chatterjee S, Xu Z, Bisordi K, Rosen ED, Alber M. Modelling platelet—blood flow interaction using the subcellular element Langevin method. *J R Soc Interface.* 2011; 8: 1760–1771. <https://doi.org/10.1098/rsif.2011.0180> PMID: [21593027](https://pubmed.ncbi.nlm.nih.gov/21593027/)
45. Christley S, Lee B, Dai X, Nie Q. Integrative multicellular biological modeling: a case study of 3D epidermal development using GPU algorithms. *BMC Syst Biol.* 2010; 4: 107. <https://doi.org/10.1186/1752-0509-4-107> PMID: [20696053](https://pubmed.ncbi.nlm.nih.gov/20696053/)
46. Sandersius SA, Newman TJ. Modeling cell rheology with the Subcellular Element Model. *Phys Biol.* 2008; 5: 015002. <https://doi.org/10.1088/1478-3975/5/1/015002> PMID: [18403827](https://pubmed.ncbi.nlm.nih.gov/18403827/)
47. Du H, Nie Q, Holmes WR. The interplay between Wnt mediated expansion and negative regulation of growth promotes robust intestinal crypt structure and homeostasis. *PLoS Comput Biol.* 2015; 11: e1004285. <https://doi.org/10.1371/journal.pcbi.1004285> PMID: [26288152](https://pubmed.ncbi.nlm.nih.gov/26288152/)
48. Jamali Y, Azimi M, Mofrad MRK. A Sub-Cellular Viscoelastic Model for Cell Population Mechanics. *PLoS ONE.* 2010; 5: e12097. <https://doi.org/10.1371/journal.pone.0012097> PMID: [20856895](https://pubmed.ncbi.nlm.nih.gov/20856895/)
49. Gardiner BS, Wong KK, Joldes GR, Rich AJ, Tan CW, Burgess AW, et al. Discrete element framework for modelling extracellular matrix, deformable cells and subcellular components. *PLoS Comput Biol.* 2015; 11: e1004544. <https://doi.org/10.1371/journal.pcbi.1004544> PMID: [26452000](https://pubmed.ncbi.nlm.nih.gov/26452000/)
50. Sandersius SA, Weijer CJ, Newman TJ. Emergent cell and tissue dynamics from subcellular modeling of active biomechanical processes. *Phys Biol.* 2011; 8: 045007. <https://doi.org/10.1088/1478-3975/8/4/045007> PMID: [21750367](https://pubmed.ncbi.nlm.nih.gov/21750367/)
51. Shraiman BI. Mechanical feedback as a possible regulator of tissue growth. *Proc Natl Acad Sci U S A.* 2005; 102: 3318–3323. <https://doi.org/10.1073/pnas.0404782102> PMID: [15728365](https://pubmed.ncbi.nlm.nih.gov/15728365/)

52. Buceta J, Herranz H, Canela-Xandri O, Reigada R, Sagués F, Milán M. Robustness and stability of the gene regulatory network involved in DV boundary formation in the *Drosophila* wing. *PLoS ONE*. 2007; 2: e602. <https://doi.org/10.1371/journal.pone.0000602> PMID: 17622347
53. Newman TJ. Modeling multi-cellular systems using sub-cellular elements. *ArXiv-Bio0504028*. 2005; <http://arxiv.org/abs/q-bio/0504028>
54. Jamali Y, Azimi M, Mofrad MRK. A Sub-Cellular Viscoelastic Model for Cell Population Mechanics. *PLOS ONE*. 2010; 5: e12097. <https://doi.org/10.1371/journal.pone.0012097> PMID: 20856895
55. Neto-Silva RM, Wells BS, Johnston LA. Mechanisms of growth and homeostasis in the *Drosophila* wing. *Annu Rev Cell Dev Biol*. 2009; 25: 197–220. <https://doi.org/10.1146/annurev.cellbio.24.110707.175242> PMID: 19575645
56. Wartlick O, Mumcu P, Kicheva A, Bittig T, Seum C, Jülicher F, et al. Dynamics of Dpp Signaling and Proliferation Control. *Science*. 2011; 331: 1154–1159. <https://doi.org/10.1126/science.1200037> PMID: 21385708
57. Fischer-Friedrich E, Hyman AA, Jülicher F, Müller DJ, Helenius J. Quantification of surface tension and internal pressure generated by single mitotic cells. *Sci Rep*. 2014; 4: 6213. <https://doi.org/10.1038/srep06213> PMID: 25169063
58. Clark AG, Paluch E. Mechanics and Regulation of Cell Shape During the Cell Cycle. In: Kubiak JZ, editor. *Cell Cycle in Development*. Springer Berlin Heidelberg; 2011. pp. 31–73. [http://link.springer.com/chapter/10.1007/978-3-642-19065-0\\_3](http://link.springer.com/chapter/10.1007/978-3-642-19065-0_3)
59. Kunda P, Pelling AE, Liu T, Baum B. Moesin Controls Cortical Rigidity, Cell Rounding, and Spindle Morphogenesis during Mitosis. *Curr Biol*. 2008; 18: 91–101. <https://doi.org/10.1016/j.cub.2007.12.051> PMID: 18207738
60. Lancaster OM, Le Berre M, Dimitracopoulos A, Bonazzi D, Zlotek-Zlotkiewicz E, Picone R, et al. Mitotic Rounding Alters Cell Geometry to Ensure Efficient Bipolar Spindle Formation. *Dev Cell*. 2013; 25: 270–283. <https://doi.org/10.1016/j.devcel.2013.03.014> PMID: 23623611
61. Guillot C, Lecuit T. Adhesion Disengagement Uncouples Intrinsic and Extrinsic Forces to Drive Cytokinesis in Epithelial Tissues. *Dev Cell*. 2013; 24: 227–241. <https://doi.org/10.1016/j.devcel.2013.01.010> PMID: 23410938
62. Matzke R, Jacobson K, Radmacher M. Direct, high-resolution measurement of furrow stiffening during division of adherent cells. *Nat Cell Biol*. 2001; 3: 607–610. <https://doi.org/10.1038/35078583> PMID: 11389447
63. Gibson WT, Veldhuis JH, Rubinstein B, Cartwright HN, Perrimon N, Brodland GW, et al. Control of the Mitotic Cleavage Plane by Local Epithelial Topology. *Cell*. 2011; 144: 427–438. <https://doi.org/10.1016/j.cell.2010.12.035> PMID: 21295702
64. Bosveld F, Markova O, Guirao B, Martin C, Wang Z, Pierre A, et al. Epithelial tricellular junctions act as interphase cell shape sensors to orient mitosis. *Nature*. 2016; 530: 495–498. <https://doi.org/10.1038/nature16970> PMID: 26886796
65. Hariharan IK. Organ Size Control: Lessons from *Drosophila*. *Dev Cell*. 2015; 34: 255–265. <https://doi.org/10.1016/j.devcel.2015.07.012> PMID: 26267393
66. Micoulet A, Spatz JP, Ott A. Mechanical Response Analysis and Power Generation by Single-Cell Stretching. *ChemPhysChem*. 2005; 6: 663–670. <https://doi.org/10.1002/cphc.200400417> PMID: 15881582
67. Kuznetsova TG, Starodubtseva MN, Yegorenkov NI, Chizhik SA, Zhdanov RI. Atomic force microscopy probing of cell elasticity. *Micron*. 2007; 38: 824–833. <https://doi.org/10.1016/j.micron.2007.06.011> PMID: 17709250
68. Laurent VM, Kasas S, Yersin A, Schäffer TE, Catsicas S, Dietler G, et al. Gradient of Rigidity in the Lamellipodia of Migrating Cells Revealed by Atomic Force Microscopy. *Biophys J*. 2005; 89: 667–675. <https://doi.org/10.1529/biophysj.104.052316> PMID: 15849253
69. Chu Y-S, Thomas WA, Eder O, Pincet F, Perez E, Thiery JP, et al. Force measurements in E-cadherin—mediated cell doublets reveal rapid adhesion strengthened by actin cytoskeleton remodeling through Rac and Cdc42. *J Cell Biol*. 2004; 167: 1183–1194. <https://doi.org/10.1083/jcb.200403043> PMID: 15596540
70. Sim JY, Moeller J, Hart KC, Ramallo D, Vogel V, Dunn AR, et al. Spatial distribution of cell—cell and cell—ECM adhesions regulates force balance while maintaining E-cadherin molecular tension in cell pairs. *Mol Biol Cell*. 2015; 26: 2456–2465. <https://doi.org/10.1091/mbc.E14-12-1618> PMID: 25971797
71. Chiu SN. Aboav-Weaire's and Lewis' laws—A review. *Mater Charact*. 1995; 34: 149–165. [https://doi.org/10.1016/1044-5803\(94\)00081-U](https://doi.org/10.1016/1044-5803(94)00081-U)
72. Sanchez-Gutierrez D, Tozluoglu M, Barry JD, Pascual A, Mao Y, Escudero LM. Fundamental physical cellular constraints drive self-organization of tissues. *EMBO J*. 2015; <https://doi.org/10.15252/embj.201592374> PMID: 26598531

73. Lewis FT. A comparison between the mosaic of polygons in a film of artificial emulsion and the pattern of simple epithelium in surface view (cucumber epidermis and human amnion). *Anat Rec.* 1931; 50: 235–265. <https://doi.org/10.1002/ar.1090500303>
74. Aboav DA. The arrangement of grains in a polycrystal. *Metallography.* 1970; 3: 383–390. [https://doi.org/10.1016/0026-0800\(70\)90038-8](https://doi.org/10.1016/0026-0800(70)90038-8)
75. Pargett M, Rundell AE, Buzzard GT, Umulis DM. Model-Based Analysis for Qualitative Data: An Application in *Drosophila* Germline Stem Cell Regulation. *PLOS Comput Biol.* 2014; 10: e1003498. <https://doi.org/10.1371/journal.pcbi.1003498> PMID: 24626201
76. Gavet O, Pines J. Activation of cyclin B1-Cdk1 synchronizes events in the nucleus and the cytoplasm at mitosis. *J Cell Biol.* 2010; 189: 247–259. <https://doi.org/10.1083/jcb.200909144> PMID: 20404109
77. Charvin G, Cross FR, Siggia ED. Forced periodic expression of G1 cyclins phase-locks the budding yeast cell cycle. *Proc Natl Acad Sci.* 2009; 106: 6632–6637. <https://doi.org/10.1073/pnas.0809227106> PMID: 19346485
78. Guglielmi G, Barry JD, Huber W, De Renzis S. An Optogenetic Method to Modulate Cell Contractility during Tissue Morphogenesis. *Dev Cell.* 2015; 35: 646–660. <https://doi.org/10.1016/j.devcel.2015.10.020> PMID: 26777292
79. Gibson MC, Patel AB, Nagpal R, Perrimon N. The emergence of geometric order in proliferating metazoan epithelia. *Nature.* 2006; 442: 1038–1041. <https://doi.org/10.1038/nature05014> PMID: 16900102