

Erratum

Physical child abuse demands increased awareness during health and socioeconomic crises like COVID-19

A review and education material

Polina MARTINKEVICH ^{1,2a}, Lise Langeland LARSEN ^{1,2a}, Troels GRÆSHOLT-KNUDSEN ^{3a}, Gitte HESTHAVEN ⁴, Michel Bach HELLFRITZSCH ^{2,5}, Karin Kastberg PETERSEN ⁵, Bjarne MØLLER-MADSEN ^{1,2,6}, and Jan Duedal RÖLFING ^{1,2,6,7}

¹ Department of Orthopaedics, Aarhus University Hospital; ² Danish Paediatric Orthopaedic Research; ³ Research Unit for Mental Public Health, Department of Public Health, Aarhus University; ⁴ Department of Paediatrics, Aarhus University Hospital; ⁵ Department of Radiology, Aarhus University Hospital; ⁶ Department of Clinical Medicine, Aarhus University; ⁷ Corporate HR, MidtSim, Central Denmark Region, Denmark

^a Shared first authorship

Correspondence: jan.roelfing@clin.au.dk

Acta Orthop 2020; 91 (5): 527–533, doi: 10.1080/17453674.2020.1782012

The infographic about red flags that should raise suspicion of physical child abuse (Figure 1 in Supplementary data) has been updated with minor text corrections. Furthermore, a complete reference list for the infographic has been added.

1. **Stith S M, Liu T, Davies L C, Boykin E L, Alder M C, Harris J M, Som A, McPherson M, Dees J E M E G.** Risk factors in child maltreatment: A meta-analytic review of the literature. *Aggress Violent Behav* 2009; 14(1): 13-29. doi:10.1016/j.avb.2006.03.006
2. **Baird E.** Non-accidental injury in children in the time of COVID-19 pandemic. *The Transient Journal*. Published April 8, 2020. Accessed July 21, 2021. <https://www.boa.ac.uk/resources/knowledge-hub/non-accidental-injury-in-children-in-the-time-of-covid-19-pandemic.html>
3. **Vanderminden J A.** A longitudinal analysis of the effect of disability type and emotional/behavior problems on different forms of maltreatment across childhood. Published online 2013.
4. **Kelly P, Thompson J M D, Koh J, Ameratunga S, Jelleman T, Percival T M, Elder H, Mitchell E A.** Perinatal risk and protective factors for pediatric abusive head trauma: a multicenter case-control study. *J Pediatr* 2017; 187: 240-6.e4. doi:10.1016/j.jpeds.2017.04.058
5. **Benedict M I, Zuravin S, Brandt D, Abbey H.** Types and frequency of child maltreatment by family foster care providers in an urban population. *Child Abuse Negl* 1994; 18(7): 577-85. doi:10.1016/0145-2134(94)90084-1
6. **Sorenson S B, Peterson J G.** Traumatic child death and documented maltreatment history, Los Angeles. *Am J Public Health* 1994; 84(4): 623-7. doi:10.2105/AJPH.84.4.623
7. **Cross D, Vance L A, Kim Y J, Ruchard A L, Fox N, Jovanovic T, Bradley B.** Trauma exposure, PTSD, and parenting in a community sample of low-income, predominantly African American mothers and children. *Psychol Trauma Theory Res Pract Policy* 2018; 10(3): 327-35. doi:10.1037/tra0000264
8. **Kostelny K, Lamin D, Manyeh M, Ondoro K, Stark L, Lilley S, Wesells M.** “Worse than the war”: An ethnographic study of the impact of the Ebola crisis on life, sex, teenage pregnancy, and a community-driven intervention in rural Sierra Leone. London: Save the Children. Published online 2016.
9. **Keenan H T, Marshall S W, Nocera M A, Runyan D K.** Increased incidence of inflicted traumatic brain injury in children after a natural disaster. *Am J Prev Med* 2004; 26(3): 189-93. doi:10.1016/j.amepre.2003.10.023
10. **Douglas E, Vanderminden J.** A longitudinal, multilevel analysis of homicide against children aged 0–9 years using state-level characteristics: 1979–2007. *Violence Vict* 2014; 29(5): 757-70. doi:10.1891/0886-6708.VV-D-12-00085
11. **Molnar B E, Goerge R M, Gilsanz P, Hill A, Subramanian S V, Holton J K, Duncan D T, Beatriz E D, Beardslee W R.** Neighborhood-level social processes and substantiated cases of child maltreatment. *Child Abuse Negl* 2016; 51: 41-53. doi:10.1016/j.chiabu.2015.11.007
12. **Black D A, Heyman R E, Smith Slep A M.** Risk factors for child physical abuse. *Aggress Violent Behav* 2001; 6(2): 121-88. doi:10.1016/S1359-1789(00)00021-5

Supplementary data

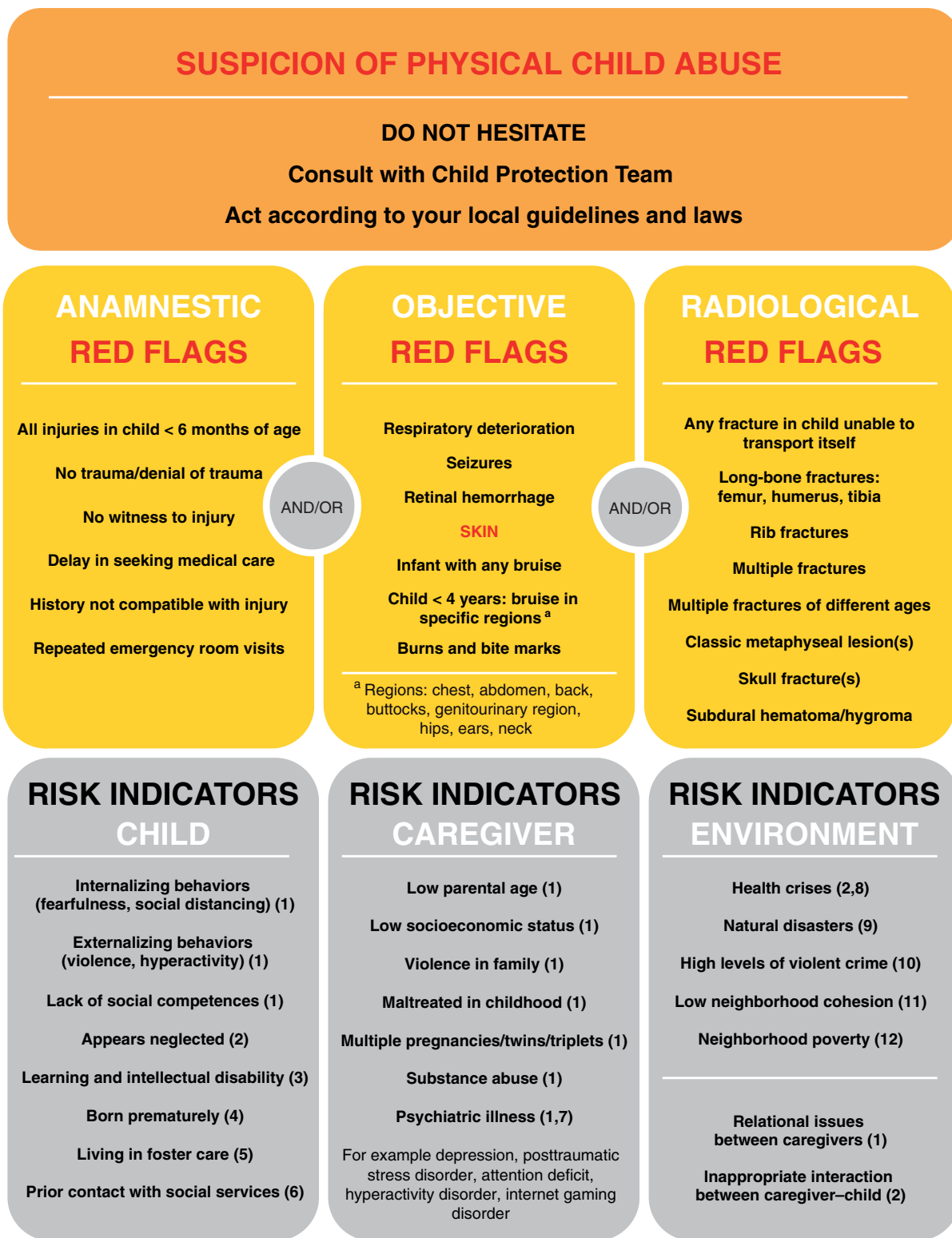


Figure 1. Red flags and risk indicators of physical child abuse.