




Article

# Mast Cell Protease 7 Promotes Angiogenesis by Degradation of Integrin Subunits

Devandir A. de Souza Junior, Carolina Santana, Gabriel V. Vieira , Constance Oliver  and Maria Celia Jamur \* 

Department of Cell and Molecular Biology and Pathogenic Bioagents, Ribeirão Preto Medical School, University of São Paulo, Ribeirão Preto 14.049-900, Brazil; dasjunior@hotmail.com (D.A.d.S.J.); carousantana@gmail.com (C.S.); gabrielviliod@gmail.com (G.V.V.); coliver@fmrp.usp.br (C.O.)

\* Correspondence: mjamur@fmrp.usp.br; Tel.: +55-16-3315-3217

Received: 14 March 2019; Accepted: 10 April 2019; Published: 12 April 2019



**Abstract:** Previous studies from our laboratory have shown that during angiogenesis *in vitro*, rmMCP-7 (recombinant mouse mast cell protease-7) stimulates endothelial cell spreading and induces their penetration into the matrix. The ability of rmMCP-7 to induce angiogenesis *in vivo* was assessed in the present study using a directed *in vivo* angiogenesis assay (DIVAA™). Vessel invasion of the angioreactor was observed in the presence of rmMCP-7 but was not seen in the control. Since integrins are involved in endothelial cell migration, the relationship between rmMCP-7 and integrins during angiogenesis was investigated. Incubation with rmMCP-7 resulted in a reduction in the levels of integrin subunits  $\alpha_v$  and  $\beta_1$  on SVEC4-10 endothelial cells during angiogenesis *in vitro*. Furthermore, the degradation of integrin subunits occurs both through the direct action of rmMCP-7 and indirectly via the ubiquitin/proteasome system. Even in the presence of a proteasome inhibitor, incubation of endothelial cells with rmMCP-7 induced cell migration and tube formation as well as the beginning of loop formation. These data indicate that the direct degradation of the integrin subunits by rmMCP-7 is sufficient to initiate angiogenesis. The results demonstrate, for the first time, that rmMCP-7 acts in angiogenesis through integrin degradation.

**Keywords:** mast cell; angiogenesis; proteases; integrin; ubiquitin/proteasome; DIVAA™

## 1. Introduction

Angiogenesis is a dynamic process that consists of the formation of new blood vessels from pre-existing ones which begins in the embryo and continues throughout life [1,2]. Angiogenesis is regulated by the balance between different angiogenic factors and endothelial cell interactions with the components of the extracellular matrix, adhesion molecules, and mechanical forces [1–5]. Angiogenesis consists of three basic stages: the first, selection of some endothelial cells inside the capillary to begin angiogenic expansion. These cells react to the angiogenic factor VEGF-A (vascular endothelial growth factor) and initiate invasion and migration. The second stage (migration, endothelial cell proliferation, and tube formation) is mediated by the interaction of VEGF-A and VEGFR-2. Maturation of newly formed blood vessels occurs in the third stage. Proliferation and migration of endothelial cells is inhibited, and the newly formed vessels fuse with other vessels, both new vessels and pre-existing vessels. This fusion stabilizes the newly formed vessels and forms a functional vascular network [6–9]. Alterations in this process which involve the relationship between the endothelial cells and their microenvironment may compromise the development and function of blood vessels [10]. Thus, angiogenic factors and regulatory components of cell spreading, such as migration and adhesion, have been the target of several studies [11–15].

Recent studies have shown that other cells types, such as macrophages, neutrophils, eosinophils, mast cells, and dendritic cells, have an important role in regulating the formation and maintenance of blood vessels during angiogenesis [11,16–19]. Signals produced within the tissue microenvironment appear to stimulate many of the pro-angiogenic functions of these cells on endothelial cells [20]. However, regulatory mechanisms involved in cell spreading and endothelial branching during angiogenesis, as well as, the cell types and/or proteins involved in these processes remain unclear.

Mast cells are connective tissue cells which are involved in host defense and participate in allergic and inflammatory reactions [21–25]. The ability of mast cells to produce and release a wide range of chemical mediators is essential for their function in different physiological and pathological processes [21,26–28]. The exact repertoire of expressed mast cell proteases varies from species to species, and these differences are used to phenotypically classify mast cells. In humans, the four homologous tryptases ( $\alpha$  and  $\beta$ I-III) that have been cloned reside at a complex on chromosome [29–31]. In mouse, only two tetrameric tryptases (designated mouse MC protease (mMCP) 6 and mMCP-7) have been identified so far. Their genes are located on mouse chromosome 17A3 [32–34]. The mouse and human TPSB2 and TPSAB1 genes encode tetramer-forming tryptases stored in the secretory granules of mast cells. The homolog of mMCP-7 in humans is tryptase alpha/beta2 [29,35–37]. Despite the chromosomal clustering of their genes, these mouse tryptases are differentially regulated in vivo [38–41] and in vitro [42,43] at the levels of gene transcription [44] and mRNA stability [42].

Mast cells often accumulate near blood vessels and it is widely recognized that mast cells are associated with newly formed microvasculature [45–47]. Various lines of evidence suggested that secreting mast cells can induce and enhance angiogenesis via multiple, and partially interacting pathways [48–51]. Several of these studies have shown that some mediators released by mast cells such as heparin, histamine, TNF- $\alpha$ , bFGF, stimulate endothelial cell proliferation, thereby influencing angiogenesis [52–57].

Previous investigations from our laboratory have shown that mast cells are involved in the induction of angiogenesis in the early stages of tumor development and in modulating blood vessel growth at later stages of tumor progression. Although mast cell numbers increased during the early stages of tumor progression, chymase (mMCP-5), tryptase (mMCP-6 and 7), and carboxypeptidase A activity increased at all stages [55]. Further studies suggested that the subtypes of proteases released by mast cells could influence endothelial cells during in vivo neo-vascularization. Both rmMCP-6 and rmMCP-7 were able to accelerate tube formation and matrix invasion by SVEC4-10 endothelial cells. rmMCP-6 and rmMCP-7 were also able to induce the differential release of angiogenic factors from these cells [58]. Furthermore, rmMCP-7 was more efficient in stimulating tube formation and release of angiogenic factors than rmMCP-6 [58]. Additional investigations revealed that mast cells have both direct and indirect effects on angiogenesis. When endothelial cells were co-cultured with mast cells, angiogenesis was stimulated. Furthermore, there was direct intercellular communication via gap junctions between the mast cells and the endothelial cells. Moreover, the presence of either mast cells or conditioned medium from the co-cultures stimulated endothelial cells to release angiogenic factors [59].

Our previous study [58] demonstrated that in the presence of rmMCP-7, endothelial cell spreading and migration are stimulated which increases tube and loop formation, as well as increasing matrix invasion. The present study was undertaken to further elucidate the role of rmMCP-7 in in vitro and in vivo angiogenesis. The results demonstrate that rmMCP-7 directly degrades integrin subunits, thus facilitating migration, invasion, and/or adhesion of endothelial cells. These processes are essential for angiogenesis. Knowledge of the interaction between mast cells and their specific proteases on endothelial cells during angiogenesis contributes to our understanding of neovascularization.

## 2. Materials and Methods

### 2.1. Cells

The murine endothelial cell line SVEC4-10 (CRL-2181) was purchased from the American Type Culture Collection (ATCC; Manassas, VA, USA). The cell line was maintained in Dulbecco's Modified Eagle's Medium (DMEM) plus 10% heat inactivated fetal bovine serum (FBS). Cells were cultured at 37 °C in a humidified environment containing 5% CO<sub>2</sub> in air. All reagents used for cell culture were purchased from Thermo Fisher Scientific (Invitrogen, Thermo Fisher Scientific, Carlsbad, CA, USA).

### 2.2. Cells Invasion Assay

The cell invasion assay was modified from Bayless et al. [60]. Briefly, a Secure-Seal<sup>®</sup> Hybridization Chamber Gasket (Thermo Fisher Scientific) was adhered to the well of a glass Lab-Tek<sup>®</sup> Chamber Slide<sup>™</sup> (Electron Microscopy Sciences; Hatfield, PA, USA). Subsequently 20 µL of Geltrex<sup>®</sup> was added through one port on the Secure-Seal<sup>®</sup> coverslip. The slides were incubated for 30 min at 37 °C for gel solidification.  $5 \times 10^4$  cells were then added through the other port on the Secure-Seal<sup>®</sup> chamber and the samples were incubated for 5 h in the presence or absence of rmMCP-7. After incubation the samples were fixed with 2% paraformaldehyde for 20 min and washed in PBS. The slides were analyzed using a Leica DMI600B9 microscope (Leica Systems, Wetzlar, Germany) and the images were acquired using a Leica DFC365FX (Leica) digital camera. The distance traveled by the cells was analyzed using the ImageJ program [61].

### 2.3. Directed In Vivo Angiogenesis Assay<sup>™</sup> (DIVAA<sup>™</sup>)

Male nude mice, 4 weeks of age, obtained from the Center for the Breeding of Special Mice, Ribeirão Preto Medical School, were used for these experiments. Mice were housed under approved conditions in the Animal Research Facilities of the Ribeirão Preto Medical School and the research was conducted according to the guidelines of the Ribeirão Preto Medical School (protocol number 017/2019). For these experiments a commercially available quantitative angiogenesis kit (DIVAA<sup>™</sup>) (Trevigen Inc., Gaithersburg, MD, USA) was used and the assays were done according to the manufacturer's protocol. Briefly, angioreactors were filled with Geltrex<sup>®</sup> only (negative control), Geltrex<sup>®</sup> plus 37.5 ng VEGF and 12.5 ng FGF-2 (fibroblast growth factor-2) (positive control) or Geltrex<sup>®</sup> plus 20ng of rmMCP-7. The angioreactors were incubated at 37 °C for 1 h to allow for gel solidification. Each group consisted of three mice and an angioreactor was implanted subcutaneously into the left and right dorsal flank of each mouse. Thirteen days after implantation, the mice were euthanized in a CO<sub>2</sub> chamber at a flow rate of 20–30% CO<sub>2</sub> per min according to Ribeirão Preto Medical School, Ribeirão Preto, Brazil guidelines and the angioreactors removed, photographed, and processed for analysis. Each angioreactor was flushed with 300 µL of CellSpense<sup>™</sup>, and the content transferred to a microtube and incubated at 37 °C for 2 h. After incubation the samples were washed by centrifugation with DIVAA<sup>™</sup> Wash Buffer. The pellet was resuspended in 200 µL of DIVAA<sup>™</sup> FITC-Lectin and incubated at 4 °C overnight. After incubation, the samples were washed with DIVAA<sup>™</sup> Wash Buffer for fluorometric analysis. Fluorescence intensity was determined in an Elisa Power Wave X Plate Reader (Bio-Tek Instruments, Inc., Winooski, VT, USA) and expressed as mean relative fluorescence (excitation 485 nm, emission 510 nm).

### 2.4. In Vitro Angiogenesis: Tube Formation Assay

The tube formation assay measures the ability of endothelial cells to form tubes (capillary-like structures). In order to perform this assay, 10 µL of Geltrex<sup>®</sup> (Invitrogen, Thermo Fisher Scientific) was added to the wells of µ-slides Angiogenesis<sup>®</sup> (IBIDI, Martinsried, Germany) and allowed to solidify at 37 °C for 30 min. After the gel solidified, SVEC4-10 cells ( $1 \times 10^4$ ) were added in 50 µL of DMEM

supplemented with 10% FBS. The cells were incubated at 37 °C in a humidified atmosphere containing 5% CO<sub>2</sub> in air for 5 h and then analyzed. The following parameters were used for quantification [62–65]:

Tubes were considered to be tubular structures that extend from one branching point to another branching point or to a loose end. Loops are enclosed (or almost enclosed) areas inside the tubes that fulfill roundness conditions.

The images were acquired using a Nikon Eclipse TE2000-U microscope (Nikon USA, Melville, NY, USA) equipped with a 10× objective. The measurements are expressed in pixels (800 × 600) where 1 pixel equals 0.069 mm<sup>2</sup>. WimTube (Wimasis Image Analysis, Munich, Germany; [www.wimasis.com/en/products/13/WimTube](http://www.wimasis.com/en/products/13/WimTube)) was used to analyze and quantify tube formation.

### 2.5. Expression of Integrin Subunits

Endothelial cells were cultured in the presence or absence of 20 ng rmMCP-7 (R and D Systems Inc., Minneapolis, MN, USA). The cells were incubated at 37 °C in a humidified atmosphere containing 5% CO<sub>2</sub> in air for 5 h and then analyzed. After incubation the cells were lysed using RIPA lysis buffer (Invitrogen, Thermo Fisher Scientific) with 15 µg/mL protease inhibitor cocktail (Millipore Sigma, St. Louis, MO, USA) for 20 min. Subsequently the lysate was centrifuged for 25 min at 14,000× *g* and the protein concentration of the supernatant was determined using the BCA Protein Assay Kit (Pierce, Thermo Fisher Scientific, Rockford, IL, USA). 20 µg of lysate were boiled for 5 min in SDS sample buffer (50 mM Tris-HCl pH 6.8, 12.5% glycerol, 1% sodium dodecylsulfate, 0.01% bromophenol blue), and applied to 10% polyacrylamide gels. Proteins were then separated electrophoretically and transferred to Hybond membranes (GE Healthcare Life Science, Pittsburgh, PA, USA). Membranes were blocked overnight in TBS (0.05 M Tris-HCl, 0.15 M NaCl, pH 7.5, and 0.05% Tween 20) containing 5% nonfat dry milk at 4 °C. Membranes were then incubated with rabbit anti-integrin subunit (α<sub>v</sub>, α<sub>2</sub>, β<sub>1</sub>) or rat anti-integrin subunit α<sub>6</sub> IgG (all from Millipore Sigma, Burlington, MA, USA) at 1:200 for 1 h at RT, washed in TBS/Tween and incubated with goat anti-rabbit IgG conjugated to HRP or goat anti-rat IgG conjugated to HRP (1:20,000) (Jackson ImmunoResearch, West Grove, PA, USA) for 30 min at RT, washed and developed using chemiluminescence (ECL-GE Healthcare, Piscataway, NJ, USA). α-actin (Millipore Sigma) was used as a loading control. Images were obtained by exposing membranes to Bio-Rad Chemidoc (Bio-Rad, Hercules, CA, USA), and the bands analyzed with ImageLab software (Bio-Rad). The optical densities of the bands were determined using Adobe Photoshop (Adobe Systems, San Jose, CA, USA).

### 2.6. Integrin Degradation Assay

To analyze the direct degradation of integrin subunits α<sub>v</sub> and β<sub>1</sub> (R and D Systems Inc.), the integrin subunits were incubated at 37 °C in the presence (1 ng rmMCP-7 to 10 ng integrin subunit) or in the absence of protease. After different times of incubation (15 min, 30 min, 1 h, 2 h 3 h, 4 h, and 5 h) the integrin subunits were analyzed by immunoblotting as previously described in Section 2.5.

### 2.7. Proteasome Inhibition

Proteasome inhibition was induced by incubation with MG132 (Calbiochem, San Diego, CA, USA). MG132 was dissolved in dimethylsulfoxide (DMSO, Sigma-Aldrich, St. Louis, MO, USA) at 10 mM as a stock solution. The optimal concentration of MG132 for blocking tube formation was determined by a dose-response curve. SVEC4-10 cells were incubated with rmMCP-7 protease in the presence or absence of 25 µM MG132 for 5 h, as previously described in Section 2.4. As a control, cells were incubated in the presence or absence of MG132, without protease. After incubation the samples were analyzed by microscopy as described in Section 2.2.

### 2.8. Immunoprecipitations Assay Using Anti-Ubiquitin

After the in vitro angiogenesis assay, the SVEC4-10 endothelial cells were lysed and the immunoprecipitation was performed using Kit-Dynabeads®Protein G (Invitrogen, Thermo Fisher

Scientific) following the manufacturer's guidelines. The magnetic beads were conjugated to anti-mouse ubiquitin FK2 (Millipore Sigma). Protein lysates were incubated with the Dynabeads<sup>®</sup>-Ab complex for 10 min at room temperature. After incubation the Dynabeads<sup>®</sup>-Ab-Ag complex was washed and the target antigen eluted. Immunoprecipitated proteins were analyzed by Western blotting with specific antibodies to detect the subunits of integrins ( $\alpha$ v and  $\beta$ 1). Protein values of the subunits were quantified using Adobe Photoshop.

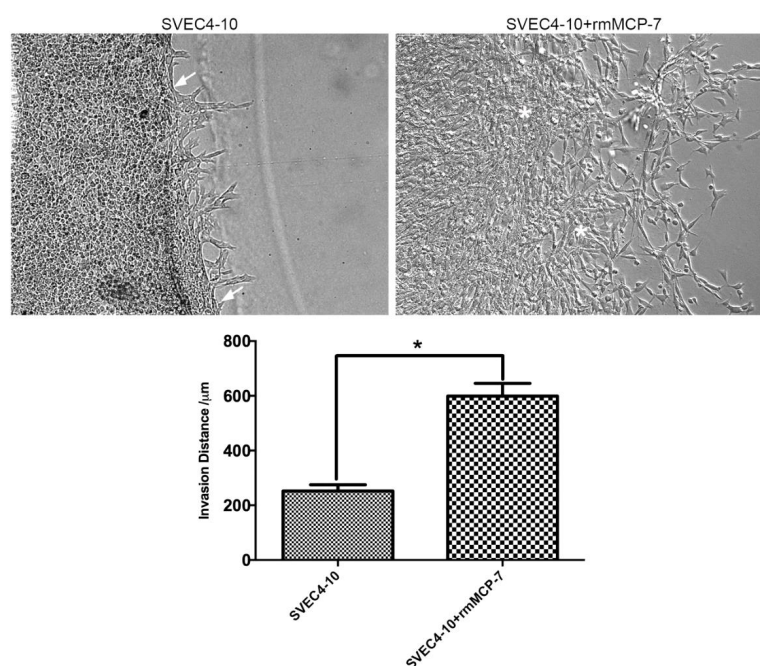
### 2.9. Statistical Analysis

The data is expressed as mean  $\pm$  SD from at least three independent experiments. In order to compare data, Student's t-test was used. *p*-values of  $\leq 0.05$  were considered significant. Statistical analysis was performed with Graphpad Prism 6.0 (Graphpad Software, La Jolla, CA, USA).

## 3. Results

### 3.1. rmMCP-7 Protease Induces Endothelial Cell Invasion

Since rmMCP-7 accelerates *in vitro* angiogenesis, it was of interest to determine whether the invasion of SVEC4-10 cells into Geltrex<sup>®</sup> increased in the presence of rmMCP-7. When SVEC4-10 cells were incubated in the presence of rmMCP-7 using a Secure-Seal<sup>™</sup> Hybridization Chamber Gasket attached to a Lab-Tek<sup>®</sup> Chamber Slide<sup>™</sup> filled with Geltrex<sup>®</sup> an increase of about three-fold in the mean invasion distance of SVEC4-10 cells was observed compared to cells incubated in the absence of rmMCP-7. In the absence of rmMCP-7 the boundary between the gel and the endothelial cells can be identified. This does not occur in the presence of rmMCP-7, when the invasion process is accelerated (Figure 1).

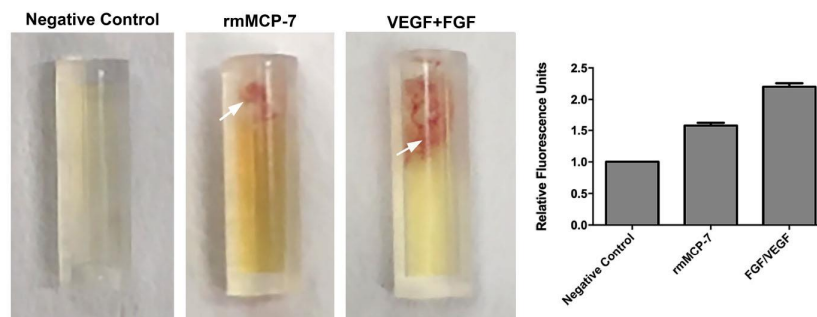


**Figure 1.** rmMCP-7 accelerates the invasion of endothelial cells into Geltrex<sup>®</sup>. In the absence of rmMCP-7, the boundary between the cells and the Geltrex<sup>®</sup> can be seen (white arrows). In the cultures treated with rmMCP-7, the boundary between the cells and the Geltrex<sup>®</sup> cannot be identified (asterisks). The distance covered by the cells was analyzed after 5 h of culture in the absence or presence of rmMCP-7. ImageJ was used to determine distance. The graph shows the mean invasion distance. Data from three independent experiments. \* *p* < 0.05.



### 3.2. rmMCP-7 Induces In Vivo Angiogenesis

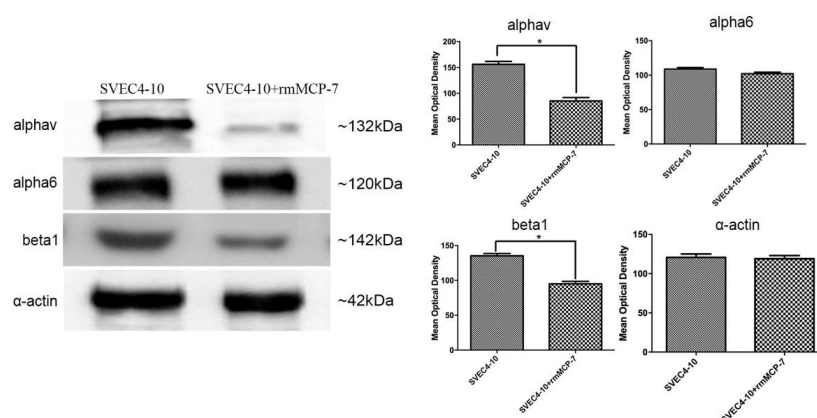
The ability of rmMCP-7 to induce angiogenesis in vivo was assessed using the Directed In Vivo Angiogenesis Assay<sup>TM</sup> (DIVAA<sup>TM</sup>). In the angioreactors containing only Geltrex<sup>®</sup> (negative control), there was no blood vessel invasion into the angioreactor. Blood vessel invasion into the angioreactor was measured by lectin-FITC binding to the angioreactor contents. The fluorescence intensity of the contents of the angioreactor containing rmMCP-7 was 58% higher than the negative control, while the fluorescence intensity in the presence of VEGF+FGF (positive control) was 113% higher than the negative control. Thus, these findings demonstrate that rmMCP-7 is capable of inducing angiogenesis both in vivo (Figure 2) and in vitro.



**Figure 2.** rmMCP-7 induces endothelial cell invasion into DIVAA<sup>TM</sup> inserts. Representative photographs demonstrate blood vessel growth (arrows) into the open end of the angioreactors only in the presence of rmMCP-7 or VEGF and FGF. DIVAA<sup>TM</sup> assay was performed in mice implanted with angioreactors containing Geltrex<sup>®</sup> (negative control), or rmMCP-7 or VEGF and FGF (positive control). Graph shows the quantification of blood vessel growth, as measured by FITC-lectin fluorescence of the cell contents of each reactor.

### 3.3. rmMCP-7 Induces Changes in Integrin Subunit Levels during Angiogenesis

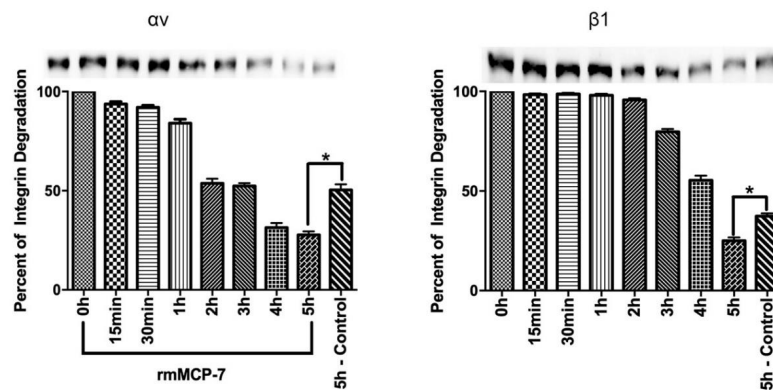
In order to understand the mechanism of action of rmMCP-7 during angiogenesis, the protein levels of integrin subunits  $\alpha v$ ,  $\alpha 6$  and  $\beta 1$  were evaluated during angiogenesis in vitro, in the presence and absence of rmMCP-7. The results of the tube formation assay showed that there was a decrease in the protein levels of  $\alpha v$  and  $\beta 1$  integrin subunits in the presence of rmMCP-7. The levels of the subunit  $\alpha 6$  were unaltered (Figure 3). Therefore, during in vitro angiogenesis, the presence of rmMCP-7 can decrease integrin subunit levels.



**Figure 3.** rmMCP-7 decreases the levels of  $\alpha v$  and  $\beta 1$  integrin subunits during angiogenesis in vitro.  $\alpha 6$  subunit levels remain unchanged. Integrin levels were analyzed by Western blot after tube formation assay. The graphs show the quantification of Western blot bands by densitometry.  $\alpha$ -actin was used as a loading control. Data from three independent experiments. \*  $p < 0.05$

### 3.4. rmMCP-7 Acts directly to Degrade Integrin Subunits

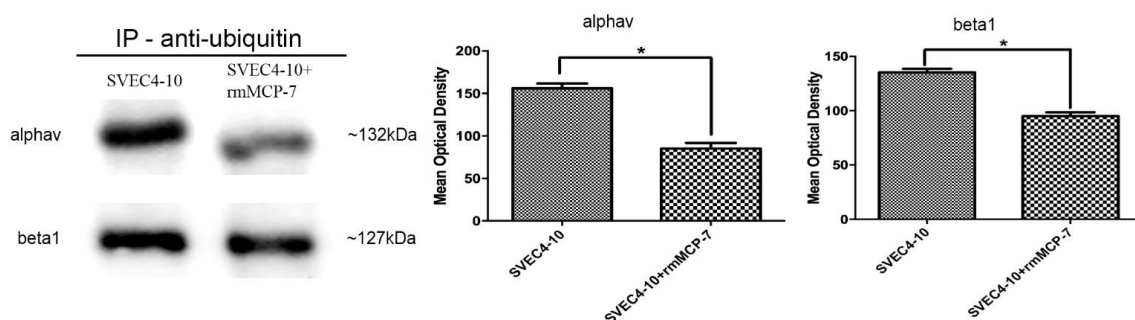
Since the levels of  $\alpha v$  and  $\beta 1$  integrin subunits were decreased in the presence of rmMCP-7 during in vitro angiogenesis, it was of interest to determine if rmMCP-7 has the ability to directly degrade integrin subunits. Therefore, degradation assays were performed with recombinant  $\alpha v$  and  $\beta 1$  integrin subunits. The results showed that the direct degradation of the  $\alpha v$  and  $\beta 1$  subunits is increased about 35% after incubation for 5 h in the presence of rmMCP-7 (Figure 4), relative to the control (absence of rmMCP-7). These results indicate that the decreased levels of the  $\alpha v$  and  $\beta 1$  subunits in the presence rmMCP-7 is due, at least in part, to direct degradation of the integrin subunits.



**Figure 4.** The  $\alpha v$  and  $\beta 1$  integrin subunits were degraded by rmMCP-7. A basal degradation of the integrin subunits is observed in the absence of rmMCP-7 (control). The recombinant integrin was incubated for 5 h in the presence or absence (control) rmMCP-7. Integrin levels were analyzed by Western blot. The graphs show the quantification of Western blot bands by densitometry. Data from three independent experiments. \*  $p < 0.05$ .

### 3.5. The Degradation of Integrin Subunits Occurs Indirectly via the Ubiquitin/Proteasome System

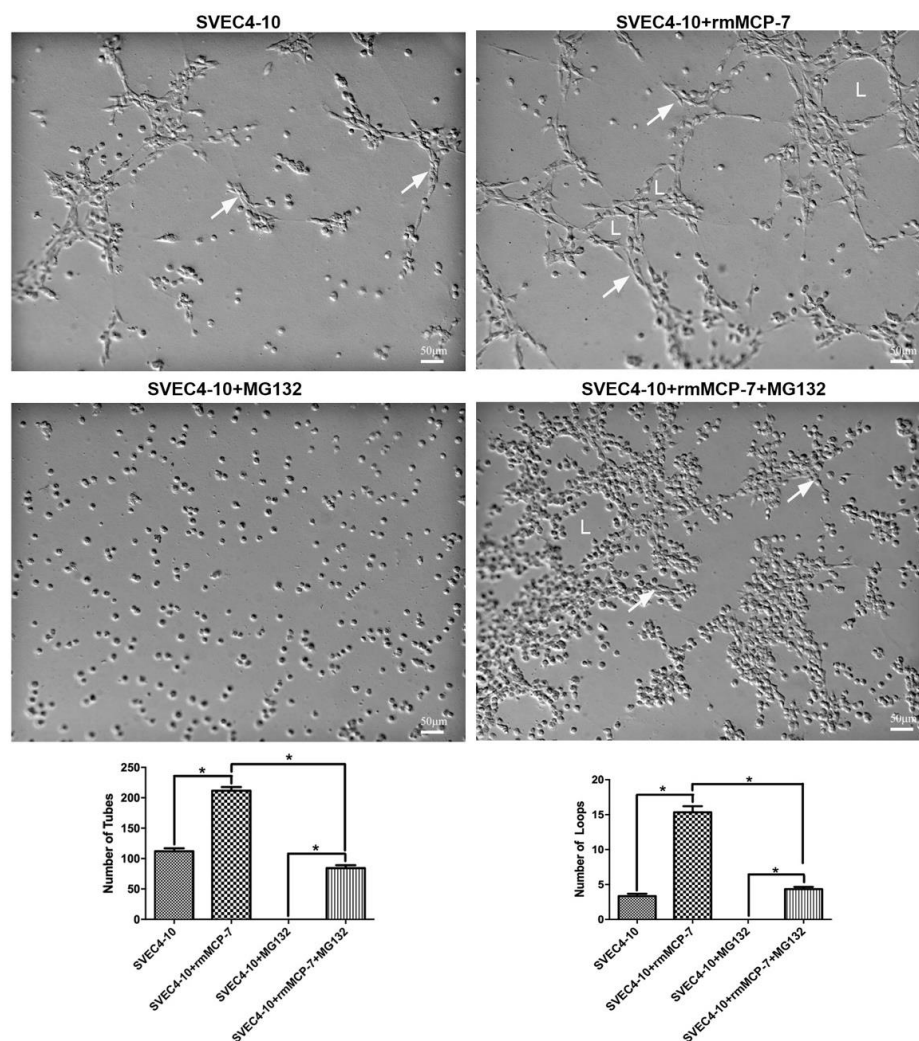
As degradation and recycling of integrins are required for angiogenesis and the ubiquitin/proteasome system controls the turnover of these proteins, experiments were performed to investigate if the  $\alpha v$  and  $\beta 1$  integrin subunits were also ubiquitinated during in vitro angiogenesis. In either the presence or absence of rmMCP-7 both  $\alpha v$  and  $\beta 1$  integrin subunits were ubiquitinated (Figure 5). Furthermore, in the presence of rmMCP-7 the protein levels of  $\alpha v$  and  $\beta 1$  integrin subunits were lower during angiogenesis. These results indicate that the ubiquitin/proteasome system contributes to integrin subunit degradation. However, the most significant portion of integrin degradation in the presence of rmMCP-7 is due to the direct degradation by the protease.



**Figure 5.** Both the  $\alpha v$  and  $\beta 1$  subunits are ubiquitinated during angiogenesis in vitro. Note that the levels of integrin subunits are lower in the presence of rmMCP-7. Integrin levels were analyzed by Western blot after immunoprecipitation (IP) using anti-ubiquitin antibody after the tube-forming assay. Western blot bands were quantified by densitometry. Data from three independent experiments. \*  $p < 0.05$ .

### 3.6. rmMCP-7 Induces Angiogenesis Independent of the Ubiquitin/Proteasome System

To confirm that the ubiquitin/proteasome system acts during angiogenesis, an in vitro tube-forming assay was performed in the presence of a proteasome inhibitor (MG132). Incubation of SVEC4-10 cells with MG132 resulted in a complete inhibition of in vitro angiogenesis (Figure 6). It was then of interest to determine if rmMCP-7 was capable of inducing in vitro angiogenesis in the absence of integrin turnover. In the presence of MG132, rmMCP-7 was still able to induce limited in vitro angiogenesis that included migration of endothelial cells, tube formation, and the formation of a few loops (Figure 6). Thus, the presence of rmMCP-7 is sufficient to induce endothelial cell migration and the initiation of tube formation in the presence of the inhibitor. Although the extensive spreading of endothelial cells and loop formation, characteristic of in vitro angiogenesis induced by rmMCP-7, was not observed (Figure 6).



**Figure 6.** rmMCP-7 initiates tube formation even in the presence of the proteasome inhibitor MG132. When SVEC4-10 cells were cultured in the presence of MG132, in vitro angiogenesis was completely inhibited. However, when the cells were cultured with rmMCP-7 in the presence of MG132, in comparison to the cells incubated only with rmMCP-7 tube formation (arrows) is reduced. Furthermore, in the presence of rmMCP-7 and MG132, it is possible to observe a few cells spread on the substrate as well as some loops (L). The cells were incubated for 5 h. Quantification of tube and loop formation using WimTube Wimasys is shown in the graphs. \*  $p < 0.05$ .



#### 4. Discussion

The current study demonstrates, for the first time, a functional role for rmMCP-7 in angiogenesis. The integrin subunits  $\alpha v$  and  $\beta 1$  were directly degraded by rmMCP-7, thereby facilitating endothelial cell migration and invasion, processes that are essential for angiogenesis.

Previously, mast cell proteases which are stored in mast cell secretory granules have been shown to influence angiogenesis [29,33,66–68]. Various studies have demonstrated that tryptases act on a variety of substrates [55,58,69–71] and that tryptase activity is a key factor in angiogenesis where it is involved in degradation of the extracellular matrix [72,73], plasminogen activation [74], fibrinogen degradation [31,75–77], activation of latent collagenase and matrix metalloproteinases [78,79], and tryptase-induced endothelial barrier dysfunction [80,81]. Additionally, an increased number of mast cells has been demonstrated in angiogenesis where they are associated with vascular tumors, a number of hematological and solid lung tumors, as well as cutaneous cancer [82–84]. This possible relationship between mast cells and angiogenesis may also be mediated through several proangiogenic factors such as VEGF, FGF-2, PDGF, and interleukin-6 (IL-6) that are also stored in mast cell secretory granules [50,52,57,85–87].

Our results with rmMCP-7 corroborate previous studies that have demonstrated that integrins are associated with the invasion of endothelial cells into the extracellular matrix during angiogenesis [88,89]. Therefore, the integrin degradation observed in the presence of rmMCP-7 suggests that the protease may act directly or indirectly in the degradation of the integrin subunits inducing angiogenesis. Degradation of integrin subunits has been observed in various studies showing that recycling or degradation of different integrin subtypes is essential for integrin activation. Degradation increases the affinity of integrin receptors for their extracellular ligands [90,91].

In the present study, when the tube-forming assay was performed in the presence of a proteasome inhibitor (MG132), angiogenesis was inhibited. These results agree with previous studies showing that proteasome inhibitors can act on angiogenesis by inhibiting cell migration, tube formation and release of angiogenic mediators by endothelial cells [92–94]. In contrast, even in the presence of the proteasome inhibitor, incubation of endothelial cells with rmMCP-7 induced cell migration and tube formation as well as the beginning of loop formation. However, extensive endothelial cell spreading, and loop formation was not seen under these conditions. Therefore, the degradation of integrin subunits by rmMCP-7 is sufficient for the initiation of angiogenesis, but integrin turnover is required for the proper spreading of endothelial cells, as well as for complete loop formation. In the presence or absence of rmMCP-7 the  $\alpha v$  and  $\beta 1$  integrin subunits were ubiquitinated. Recent data have demonstrated that proteasomal degradation of integrin receptors may also occur and may be regulated by the ubiquitin-proteasome pathway [91,95,96]. Lobert et al. [95] present evidence that a fraction of the  $\alpha 5 \beta 1$  integrin is ubiquitinated and degraded together with fibronectin in a ligand-ESCRT-dependent manner, and that this is required for proper fibroblast migration. Hsia et al. [96] demonstrated that  $\alpha 5$  integrin degradation is mediated by proteasomes and  $\alpha 5$  integrin is associated with the ubiquitination pathway in the absence of fibronectin [97]. The ubiquitin/proteasome system controls the degradation and recycling of proteins involved in critical cellular functions, such as migration and adhesion [97–99].

The integrins link cells to the extracellular matrix and play an important role in sensing the environment and controlling cell shape and motility [100–103]. Several researchers have reported changes in the expression levels of integrins during angiogenesis, both in vitro and in vivo. However, the significance of variations in integrin activity, conformation and function during angiogenesis is still not completely understood. Walsh et al., 2009 [104] observed that differences in the levels of integrin subunit expression correlated with matrix invasion by human pancreatic cancer cells. Different experimental approaches, such as inhibition with antibodies, knock-in mutations and genetic deletions have led to conflicting theories on the role of integrins in angiogenesis [104]. Studies using antibodies against the  $\alpha v$  integrin subunit suggested that this subunit promoted angiogenesis, while genetic deletion of the  $\alpha v$  integrin subunit indicated that  $\alpha v$  integrins are not required for angiogenesis [105–109].

Previous studies have shown an important role for  $\alpha 2\beta 1$  integrin in angiogenesis. San Antonio et al. [110] demonstrated that the small molecule inhibitor (SMI496) of  $\alpha 2\beta 1$  integrin interfered with angiogenesis by inhibiting sprouting from the axial vessels. They also showed that morpholino-mediated knockdown of  $\alpha 2$  can alter angiogenesis, promoting the formation of nonfunctional vessels. Furthermore, when endothelial cells were plated on type I or type IV collagen (both  $\alpha 2\beta 1$  integrin-dependent ligands), fibronectin (an  $\alpha 2\beta 1$  integrin-independent ligand), or tissue culture plastic, and cell proliferation were evaluated,  $\alpha 2$ -null endothelial cells showed a four- to five-fold higher proliferative index when compared with their wild-type counterparts on all matrices [111]. Additionally, genetic ablation studies have demonstrated a critical role for  $\beta 1$  integrins in angiogenesis and vascular development [112,113]. These data indicate that  $\beta 1$  integrin is required for maintenance of endothelial cell shape, single layered morphology, and luminal patency of mid-sized arteries after formation of the major vessels [113].

Interestingly, the levels of the  $\alpha 6$  integrin subunit were unaltered in the presence of rmMCP-7. The  $\alpha 6$  integrin subunit forms part of the  $\alpha 6\beta 1$  and  $\alpha 6\beta 4$  integrin complexes, which can selectively bind to different ligands such as fibronectin, vitronectin, collagen, and laminin. They also are involved in different biological activities including embryogenesis, organogenesis, and invasion of carcinoma cells [114]. Primo et al. [115], studying the functional role of  $\alpha 6$  integrin during angiogenesis by lentivirus-mediated gene silencing and blocking antibody, observed that the expression of  $\alpha 6$  in endothelial cells during angiogenesis could be modified depending on the substrate.

Our results demonstrate, for the first time, a functional role for mMCP-7 in angiogenesis. This knowledge may be useful in developing future therapeutic targets. The scarcity of specific targets is the greatest challenge in controlling angiogenesis in diverse pathological processes.

## 5. Conclusions

Degradation of integrin subunits by mMCP-7 facilitates migration and invasion of endothelial cells, thereby promoting angiogenesis both in vitro and in vivo.

**Author Contributions:** Conceptualization: D.A.d.S.J., C.O., and N.C.J.; formal analysis: D.A.d.S.J. and C.S.; funding acquisition: C.O. and N.C.J.; investigation: D.A.d.S.J., C.S., and G.V.V.; methodology: D.A.d.S.J., G.V.V., C.O., and N.C.J.; project administration: C.O.; resources: C.O. and N.C.J.; supervision: C.O. and N.C.J.; validation: D.A.d.S.J.; Visualization, D.A.d.S.J., and C.O.; writing—original draft: D.A.d.S.J.; writing—review and editing: D.A.d.S.J., C.O., and N.C.J.. All authors have read and approved the final manuscript.

**Funding:** Funding was provided by FAPESP (Fundação de Amparo e Pesquisa do Estado de São Paulo, <http://www.fapesp.br/>); 17/18618-1 to CO, CNPq (Conselho Nacional de Desenvolvimento Científico e Tecnológico, <http://www.cnpq.br>) Grant 407701/2016-8 to MCJ and Post-Doctoral Fellowship 150070/2017-9 to DASJ, FAEPA (Fundação de Apoio ao Ensino, Pesquisa e Assistência, <http://www.faeapa.br>) Grant to CO.

**Acknowledgments:** We would like to thank Roberta Ribeiro Costa Rosales from the Multiuser Laboratory for In Vivo Microscopy, Department of Cell and Molecular Biology and Pathogenic Bioagents, Ribeirão Preto Medical School, University of São Paulo, Ribeirão Preto, SP for technical assistance with the Biostation.

**Conflicts of Interest:** The authors declare no conflict of interest. The funders had no role in the design of the study; in the collection, analyses, or interpretation of data; in the writing of the manuscript, or in the decision to publish the results.

## References

1. Kerbel, R.S. Tumor angiogenesis: Past, present and the near future. *Carcinogenesis* **2000**, *21*, 505–515. [[CrossRef](#)]
2. Noy, R.; Pollard, J.W. Tumor-associated macrophages: From mechanisms to therapy. *Immunity* **2014**, *41*, 49–61. [[CrossRef](#)]
3. Ausprunk, D.H.; Folkman, J. Migration and proliferation of endothelial cells in preformed and newly formed blood vessels during tumor angiogenesis. *Microvasc. Res.* **1977**, *14*, 53–65. [[CrossRef](#)]
4. Gacche, R.N.; Meshram, R.J. Angiogenic factors as potential drug target: Efficacy and limitations of anti-angiogenic therapy. *Biochim. Biophys. Acta* **2014**, *1846*, 161–179. [[CrossRef](#)]

5. Folkman, J. Angiogenesis in cancer, vascular, rheumatoid and other disease. *Nat. Med.* **1995**, *1*, 27–31. [[CrossRef](#)] [[PubMed](#)]
6. Nishida, N.; Yano, H.; Nishida, T.; Kamura, T.; Kojiro, M. Angiogenesis in cancer. *Vasc. Health Risk Manag.* **2006**, *2*, 213–219. [[CrossRef](#)] [[PubMed](#)]
7. Li, C.Y.; Shan, S.; Huang, Q.; Braun, R.D.; Lanzen, J.; Hu, K.; Lin, P.; Dewhirst, M.W. Initial stages of tumor cell-induced angiogenesis: Evaluation via skin window chambers in rodent models. *J. Natl. Cancer Inst.* **2000**, *92*, 143–147. [[CrossRef](#)]
8. Senger, D.R.; Davis, G.E. Angiogenesis. *Cold Spring Harb Perspect. Biol.* **2011**, *3*, a005090. [[CrossRef](#)]
9. Tahergorabi, Z.; Khazaei, M. A review on angiogenesis and its assays. *Iran. J. Basic Med. Sci.* **2012**, *15*, 1110–1126. [[PubMed](#)]
10. Yana, I.; Sagara, H.; Takaki, S.; Takatsu, K.; Nakamura, K.; Nakao, K.; Katsuki, M.; Taniguchi, S.; Aoki, T.; Sato, H.; et al. Crosstalk between neovessels and mural cells directs the site-specific expression of MT1-MMP to endothelial tip cells. *J. Cell Sci.* **2007**, *120*, 1607–1614. [[CrossRef](#)]
11. Thurston, G.; Kitajewski, J. VEGF and Delta-Notch: Interacting signalling pathways in tumour angiogenesis. *Br. J. Cancer* **2008**, *99*, 1204–1209. [[CrossRef](#)]
12. Gerhardt, H.; Golding, M.; Fruttiger, M.; Ruhrberg, C.; Lundkvist, A.; Abramsson, A.; Jeltsch, M.; Mitchell, C.; Alitalo, K.; Shima, D.; et al. VEGF guides angiogenic sprouting utilizing endothelial tip cell filopodia. *J. Cell Biol.* **2003**, *161*, 1163–1177. [[CrossRef](#)]
13. Ruhrberg, C.; Gerhardt, H.; Golding, M.; Watson, R.; Ioannidou, S.; Fujisawa, H.; Betsholtz, C.; Shima, D.T. Spatially restricted patterning cues provided by heparin-binding VEGF-A control blood vessel branching morphogenesis. *Genes Dev.* **2002**, *16*, 2684–2698. [[CrossRef](#)]
14. Beets, K.; Huylebroeck, D.; Moya, I.M.; Umans, L.; Zwijsen, A. Robustness in angiogenesis: Notch and BMP shaping waves. *Trends Genet.* **2013**, *29*, 140–149. [[CrossRef](#)]
15. Suchting, S.; Freitas, C.; le Noble, F.; Benedito, R.; Bréant, C.; Duarte, A.; Eichmann, A. The Notch ligand Delta-like 4 negatively regulates endothelial tip cell formation and vessel branching. *Proc. Natl. Acad. Sci. USA* **2007**, *104*, 3225–3230. [[CrossRef](#)]
16. Hellström, M.; Phng, L.K.; Hofmann, J.J.; Wallgard, E.; Coultas, L.; Lindblom, P.; Alva, J.; Nilsson, A.K.; Karlsson, L.; Gaiano, N.; et al. Dll4 signalling through Notch1 regulates formation of tip cells during angiogenesis. *Nature* **2007**, *445*, 776–780. [[CrossRef](#)]
17. Murdoch, C.; Muthana, M.; Coffelt, S.B.; Lewis, C.E. The role of myeloid cells in the promotion of tumour angiogenesis. *Nat. Rev. Cancer* **2008**, *8*, 618–631. [[CrossRef](#)]
18. Lin, Y.J.; Lai, M.D.; Lei, H.Y.; Wing, L.Y. Neutrophils and macrophages promote angiogenesis in the early stage of endometriosis in a mouse model. *Endocrinology* **2006**, *147*, 1278–1286. [[CrossRef](#)]
19. Kolaczkowska, E.; Kubes, P. Phagocytes & granulocytes. Angiogenic neutrophils: A novel subpopulation paradigm. *Blood* **2012**, *120*, 4455–4457. [[CrossRef](#)]
20. Norton, K.A.; Popel, A.S. Effects of endothelial cell proliferation and migration rates in a computational model of sprouting angiogenesis. *Sci. Rep.* **2016**, *6*, 36992. [[CrossRef](#)]
21. Da Silva, E.Z.; Jamur, M.C.; Oliver, C. Mast cell function: A new vision of an old cell. *J. Histochem. Cytochem.* **2014**, *62*, 698–738. [[CrossRef](#)]
22. Espinosa, E.; Valitutti, S. New roles and controls of mast cells. *Curr. Opin. Immunol.* **2017**, *50*, 39–47. [[CrossRef](#)]
23. Marichal, T.; Tsai, M.; Galli, S.J. Mast cells: Potential positive and negative roles in tumor biology. *Cancer Immunol. Res.* **2013**, *1*, 269–279. [[CrossRef](#)]
24. Wedemeyer, J.; Galli, S.J. Mast cells and basophils in acquired immunity. *Br. Med. Bull.* **2000**, *56*, 936–955. [[CrossRef](#)]
25. Theoharides, T.C.; Alysandratos, K.D.; Angelidou, A.; Delivanis, D.A.; Sismanopoulos, N.; Zhang, B.; Asadi, S.; Vasiadi, M.; Weng, Z.; Miniati, A.; et al. Mast cells and inflammation. *Biochim. Biophys. Acta* **2012**, *1822*, 21–33. [[CrossRef](#)]
26. Soucie, E.; Brenet, F.; Dubreuil, P. Molecular basis of mast cell disease. *Mol. Immunol.* **2015**, *63*, 55–60. [[CrossRef](#)]
27. Jamur, M.C.; Oliver, C. Origin, maturation and recruitment of mast cell precursors. *Front. Biosci. (Sch. Ed.)* **2011**, *3*, 1390–1406.

28. Harvima, I.T.; Levi-Schaffer, F.; Draber, P.; Friedman, S.; Polakovicova, I.; Gibbs, B.F.; Blank, U.; Nilsson, G.; Maurer, M. Molecular targets on mast cells and basophils for novel therapies. *J. Allergy Clin. Immunol.* **2014**, *134*, 530–544. [[CrossRef](#)]
29. Pejler, G.; Abrink, M.; Ringvall, M.; Wernersson, S. Mast cell proteases. *Adv. Immunol.* **2007**, *95*, 167–255. [[CrossRef](#)]
30. McNeil, H.P.; Shin, K.; Campbell, I.K.; Wicks, I.P.; Adachi, R.; Lee, D.M.; Stevens, R.L. The mouse mast cell-restricted tetramer-forming tryptases mouse mast cell protease 6 and mouse mast cell protease 7 are critical mediators in inflammatory arthritis. *Arthritis Rheum.* **2008**, *58*, 2338–2346. [[CrossRef](#)]
31. Huang, C.; Wong, G.W.; Ghildyal, N.; Gurish, M.F.; Sali, A.; Matsumoto, R.; Qiu, W.T.; Stevens, R.L. The tryptase, mouse mast cell protease 7, exhibits anticoagulant activity in vivo and in vitro due to its ability to degrade fibrinogen in the presence of the diverse array of protease inhibitors in plasma. *J. Biol. Chem.* **1997**, *272*, 31885–31893. [[CrossRef](#)]
32. Lundequist, A.; Pejler, G. Biological implications of preformed mast cell mediators. *Cell. Mol. Life Sci.* **2011**, *68*, 965–975. [[CrossRef](#)]
33. Wernersson, S.; Pejler, G. Mast cell secretory granules: Armed for battle. *Nat. Rev. Immunol.* **2014**, *14*, 478–494. [[CrossRef](#)]
34. Shubin, N.J.; Glukhova, V.A.; Clauson, M.; Truong, P.; Abrink, M.; Pejler, G.; White, N.J.; Deutsch, G.H.; Reeves, S.R.; Vaisar, T.; et al. Proteome analysis of mast cell releasates reveals a role for chymase in the regulation of coagulation factor XIIIa levels via proteolytic degradation. *J. Allergy Clin. Immunol.* **2016**, *139*, 323–334. [[CrossRef](#)]
35. Wong, G.W.; Li, L.; Madhusudhan, M.S.; Krilis, S.A.; Gurish, M.F.; Rothenberg, M.E.; Sali, A.; Stevens, R.L. Tryptase 4, a new member of the chromosome 17 family of mouse serine proteases. *J. Biol. Chem.* **2001**, *276*, 20648–20658. [[CrossRef](#)]
36. Caughey, G.H. Mast cell tryptases and chymases in inflammation and host defense. *Immunol. Rev.* **2007**, *217*, 141–154. [[CrossRef](#)]
37. Caughey, G.H. Mast cell proteases as pharmacological targets. *Eur. J. Pharmacol.* **2016**, *778*, 44–55. [[CrossRef](#)]
38. Reynolds, D.S.; Stevens, R.L.; Lane, W.S.; Carr, M.H.; Austen, K.F.; Serafin, W.E. Different mouse mast cell populations express various combinations of at least six distinct mast cell serine proteases. *Proc. Natl. Acad. Sci. USA* **1990**, *87*, 3230–3234. [[CrossRef](#)]
39. Stevens, R.L.; Friend, D.S.; McNeil, H.P.; Schiller, V.; Ghildyal, N.; Austen, K.F. Strain-specific and tissue-specific expression of mouse mast cell secretory granule proteases. *Proc. Natl. Acad. Sci. USA* **1994**, *91*, 128–132. [[CrossRef](#)]
40. Gurish, M.F.; Pear, W.S.; Stevens, R.L.; Scott, M.L.; Sokol, K.; Ghildyal, N.; Webster, M.J.; Hu, X.; Austen, K.F.; Baltimore, D. Tissue-regulated differentiation and maturation of a v-abl-immortalized mast cell-committed progenitor. *Immunity* **1995**, *3*, 175–186. [[CrossRef](#)]
41. Vanganswinkel, T.; Geurts, N.; Quanten, K.; Nelissen, S.; Lemmens, S.; Geboes, L.; Dooley, D.; Vidal, P.M.; Pejler, G.; Hendrix, S. Mast cells promote scar remodeling and functional recovery after spinal cord injury via mouse mast cell protease 6. *FASEB J.* **2016**, *30*, 2040–2057. [[CrossRef](#)]
42. Reynolds, D.S.; Gurley, D.S.; Austen, K.F.; Serafin, W.E. Cloning of the cDNA and gene of mouse mast cell protease-6. Transcription by progenitor mast cells and mast cells of the connective tissue subclass. *J. Biol. Chem.* **1991**, *266*, 3847–3853.
43. McNeil, H.P.; Reynolds, D.S.; Schiller, V.; Ghildyal, N.; Gurley, D.S.; Austen, K.F.; Stevens, R.L. Isolation, characterization, and transcription of the gene encoding mouse mast cell protease 7. *Proc. Natl. Acad. Sci. USA* **1992**, *89*, 11174–11178. [[CrossRef](#)]
44. Morii, E.; Tsujimura, T.; Jippo, T.; Hashimoto, K.; Takebayashi, K.; Tsujino, K.; Nomura, S.; Yamamoto, M.; Kitamura, Y. Regulation of mouse mast cell protease 6 gene expression by transcription factor encoded by the mi locus. *Blood* **1996**, *88*, 2488–2494.
45. Hiromatsu, Y.; Toda, S. Mast cells and angiogenesis. *Microsc. Res. Tech.* **2003**, *60*, 64–69. [[CrossRef](#)]
46. Coussens, L.M.; Raymond, W.W.; Bergers, G.; Laig-Webster, M.; Behrendtsen, O.; Werb, Z.; Caughey, G.H.; Hanahan, D. Inflammatory mast cells up-regulate angiogenesis during squamous epithelial carcinogenesis. *Genes Dev.* **1999**, *13*, 1382–1397. [[CrossRef](#)]
47. Paolino, G.; Corsetti, P.; Moliterni, E.; Corsetti, S.; Didona, D.; Albanesi, M.; Mattozzi, C.; Lido, P.; Calvieri, S. Mast cells and cancer: A review of literature. *Giornale Italiano di Dermatologia e Venereologia* **2017**. [[CrossRef](#)]



48. Norrby, K. Mast cells and angiogenesis. *APMIS* **2002**, *110*, 355–371. [[CrossRef](#)]
49. Vacca, A.; Ria, R.; Reale, A.; Ribatti, D. Angiogenesis in multiple myeloma. *Chem. Immunol. Allergy* **2014**, *99*, 180–196. [[CrossRef](#)]
50. Ribatti, D.; Tamma, R.; Vacca, A. Mast Cells and Angiogenesis in Human Plasma Cell Malignancies. *Int. J. Mol. Sci.* **2019**, *20*, 481. [[CrossRef](#)]
51. Krystel-Whittemore, M.; Dileepan, K.N.; Wood, J.G. Mast Cell: A Multi-Functional Master Cell. *Front. Immunol.* **2015**, *6*, 620. [[CrossRef](#)]
52. Ribatti, D.; Crivellato, E. Mast cells, angiogenesis, and tumour growth. *Biochim. Biophys. Acta* **2012**, *1822*, 2–8. [[CrossRef](#)]
53. Crivellato, E.; Nico, B.; Ribatti, D. Mast cells and tumour angiogenesis: New insight from experimental carcinogenesis. *Cancer Lett.* **2008**, *269*, 1–6. [[CrossRef](#)]
54. Ribatti, D.; Ranieri, G.; Nico, B.; Benagiano, V.; Crivellato, E. Tryptase and chymase are angiogenic in vivo in the chorioallantoic membrane assay. *Int. J. Dev. Biol.* **2011**, *55*, 99–102. [[CrossRef](#)]
55. de Souza, D.A.; Toso, V.D.; Campos, M.R.; Lara, V.S.; Oliver, C.; Jamur, M.C. Expression of mast cell proteases correlates with mast cell maturation and angiogenesis during tumor progression. *PLoS ONE* **2012**, *7*, e40790. [[CrossRef](#)]
56. Gaber, M.A.; Seliet, I.A.; Ehsan, N.A.; Megahed, M.A. Mast cells and angiogenesis in wound healing. *Anal. Quant. Cytopathol. Histopathol.* **2014**, *36*, 32–40.
57. Sawatsubashi, M.; Yamada, T.; Fukushima, N.; Mizokami, H.; Tokunaga, O.; Shin, T. Association of vascular endothelial growth factor and mast cells with angiogenesis in laryngeal squamous cell carcinoma. *Virchows Arch.* **2000**, *436*, 243–248. [[CrossRef](#)]
58. De Souza, D.A.; Borges, A.C.; Santana, A.C.; Oliver, C.; Jamur, M.C. Mast Cell Proteases 6 and 7 Stimulate Angiogenesis by Inducing Endothelial Cells to Release Angiogenic Factors. *PLoS ONE* **2015**, *10*, e0144081. [[CrossRef](#)]
59. de Souza Junior, D.A.; Mazucato, V.M.; Santana, A.C.; Oliver, C.; Jamur, M.C. Mast Cells Interact with Endothelial Cells to Accelerate In Vitro Angiogenesis. *Int. J. Mol. Sci.* **2017**, *18*, 2674. [[CrossRef](#)]
60. Bayless, K.J.; Kwak, H.I.; Su, S.C. Investigating endothelial invasion and sprouting behavior in three-dimensional collagen matrices. *Nat. Protoc.* **2009**, *4*, 1888–1898. [[CrossRef](#)]
61. Schneider, C.A.; Rasband, W.S.; Eliceiri, K.W. NIH Image to ImageJ: 25 years of image analysis. *Nat. Methods* **2012**, *9*, 671–675. [[CrossRef](#)]
62. Lee, W.S.; Park, Y.L.; Kim, N.; Oh, H.H.; Son, D.J.; Kim, M.Y.; Oak, C.Y.; Chung, C.Y.; Park, H.C.; Kim, J.S.; et al. Myeloid cell leukemia-1 is associated with tumor progression by inhibiting apoptosis and enhancing angiogenesis in colorectal cancer. *Am. J. Cancer Res.* **2015**, *5*, 101–113.
63. Askou, A.L.; Aagaard, L.; Kostic, C.; Arsenijevic, Y.; Hollensen, A.K.; Bek, T.; Jensen, T.G.; Mikkelsen, J.G.; Corydon, T.J. Multigenic lentiviral vectors for combined and tissue-specific expression of miRNA- and protein-based antiangiogenic factors. *Mol. Ther. Methods Clin. Dev.* **2015**, *2*, 14064. [[CrossRef](#)]
64. Khoo, C.P.; Micklem, K.; Watt, S.M. A comparison of methods for quantifying angiogenesis in the Matrigel assay in vitro. *Tissue Eng. Part C Methods* **2011**, *17*, 895–906. [[CrossRef](#)]
65. Subramanian, M.; Rao, S.R.; Thacker, P.; Chatterjee, S.; Karunakaran, D. MiR-29b downregulates canonical Wnt signaling by suppressing coactivators of  $\beta$ -catenin in human colorectal cancer cells. *J. Cell. Biochem.* **2014**, *115*, 1974–1984. [[CrossRef](#)]
66. Waern, I.; Jonasson, S.; Hjoberg, J.; Bucht, A.; Abrink, M.; Pejler, G.; Wernersson, S. Mouse mast cell protease 4 is the major chymase in murine airways and has a protective role in allergic airway inflammation. *J. Immunol.* **2009**, *183*, 6369–6376. [[CrossRef](#)]
67. Ribatti, D.; Tamma, R.; Crivellato, E. The dual role of mast cells in tumor fate. *Cancer Lett.* **2018**, *433*, 252–258. [[CrossRef](#)]
68. Ribatti, D.; Tamma, R.; Crivellato, E. Cross talk between natural killer cells and mast cells in tumor angiogenesis. *Inflamm. Res.* **2019**, *68*, 19–23. [[CrossRef](#)]
69. Kritas, S.K.; Gallenga, C.E.; D Ovidio, C.; Ronconi, G.; Caraffa, A.; Toniato, E.; Lauritano, D.; Conti, P. Impact of mold on mast cell-cytokine immune response. *J. Biol. Regul. Homeost. Agents* **2018**, *32*, 763–768.
70. Qian, N.; Li, X.; Wang, X.; Wu, C.; Yin, L.; Zhi, X. Tryptase promotes breast cancer angiogenesis through PAR-2 mediated endothelial progenitor cell activation. *Oncol. Lett.* **2018**, *16*, 1513–1520. [[CrossRef](#)]

71. Ammendola, M.; Sacco, R.; Vescio, G.; Zuccalà, V.; Luposella, M.; Patruno, R.; Zizzo, N.; Gadaleta, C.; Marech, I.; Ruggieri, R.; et al. Tryptase mast cell density, protease-activated receptor-2 microvascular density, and classical microvascular density evaluation in gastric cancer patients undergoing surgery: Possible translational relevance. *Therap. Adv. Gastroenterol.* **2017**, *10*, 353–360. [[CrossRef](#)]
72. Kielty, C.M.; Lees, M.; Shuttleworth, C.A.; Woolley, D. Catabolism of intact type VI collagen microfibrils: Susceptibility to degradation by serine proteinases. *Biochem. Biophys. Res. Commun.* **1993**, *191*, 1230–1236. [[CrossRef](#)]
73. Ribatti, D.; Ranieri, G. Tryptase, a novel angiogenic factor stored in mast cell granules. *Exp. Cell Res.* **2015**, *332*, 157–162. [[CrossRef](#)]
74. Stack, M.S.; Johnson, D.A. Human mast cell tryptase activates single-chain urinary-type plasminogen activator (pro-urokinase). *J. Biol. Chem.* **1994**, *269*, 9416–9419.
75. Dudeck, A.; Köberle, M.; Goldmann, O.; Meyer, N.; Dudeck, J.; Lemmens, S.; Rohde, M.; Roldán, N.G.; Dietze-Schwonberg, K.; Orinska, Z.; et al. Mast cells as protectors of health. *J. Allergy Clin. Immunol.* **2018**. [[CrossRef](#)]
76. Xu, J.; Wang, J.; Shao, C.; Zeng, X.; Sun, L.; Kong, H.; Xie, W.; Wang, H. New dynamic viewing of mast cells in pulmonary arterial hypertension (PAH): Contributors or outsiders to cardiovascular remodeling. *J. Thorac. Dis.* **2018**, *10*, 3016–3026. [[CrossRef](#)]
77. Schwartz, L.B.; Bradford, T.R.; Irani, A.M.; Deblois, G.; Craig, S.S. The major enzymes of human mast cell secretory granules. *Am. Rev. Respir. Dis.* **1987**, *135*, 1186–1189.
78. Gruber, B.L.; Marchese, M.J.; Suzuki, K.; Schwartz, L.B.; Okada, Y.; Nagase, H.; Ramamurthy, N.S. Synovial procollagenase activation by human mast cell tryptase dependence upon matrix metalloproteinase 3 activation. *J. Clin. Investig.* **1989**, *84*, 1657–1662. [[CrossRef](#)]
79. Fang, K.C.; Wolters, P.J.; Steinhoff, M.; Bidgol, A.; Blount, J.L.; Caughey, G.H. Mast cell expression of gelatinases A and B is regulated by kit ligand and TGF-beta. *J. Immunol.* **1999**, *162*, 5528–5535.
80. Sendo, T.; Sumimura, T.; Itoh, Y.; Goromaru, T.; Aki, K.; Yano, T.; Oike, M.; Ito, Y.; Mori, S.; Nishibori, M.; et al. Involvement of proteinase-activated receptor-2 in mast cell tryptase-induced barrier dysfunction in bovine aortic endothelial cells. *Cell Signal.* **2003**, *15*, 773–781. [[CrossRef](#)]
81. Itoh, Y.; Sendo, T.; Hirakawa, T.; Goromaru, T.; Takasaki, S.; Yahata, H.; Nakano, H.; Oishi, R. Role of sensory nerve peptides rather than mast cell histamine in paclitaxel hypersensitivity. *Am. J. Respir. Crit. Care Med.* **2004**, *169*, 113–119. [[CrossRef](#)]
82. Ranieri, G.; Passantino, L.; Patruno, R.; Passantino, G.; Jirillo, F.; Catino, A.; Mattioli, V.; Gadaleta, C.; Ribatti, D. The dog mast cell tumour as a model to study the relationship between angiogenesis, mast cell density and tumour malignancy. *Oncol. Rep.* **2003**, *10*, 1189–1193. [[CrossRef](#)]
83. Ranieri, G.; Labriola, A.; Achille, G.; Florio, G.; Zito, A.F.; Grammatica, L.; Paradiso, A. Microvessel density, mast cell density and thymidine phosphorylase expression in oral squamous carcinoma. *Int. J. Oncol.* **2002**, *21*, 1317–1323. [[CrossRef](#)]
84. Gulubova, M.; Vlaykova, T. Prognostic significance of mast cell number and microvascular density for the survival of patients with primary colorectal cancer. *J. Gastroenterol. Hepatol.* **2009**, *24*, 1265–1275. [[CrossRef](#)]
85. Nakayama, T.; Yao, L.; Tosato, G. Mast cell-derived angiopoietin-1 plays a critical role in the growth of plasma cell tumors. *J. Clin. Investig.* **2004**, *114*, 1317–1325. [[CrossRef](#)]
86. Maltby, S.; Khazaie, K.; McNagny, K.M. Mast cells in tumor growth: Angiogenesis, tissue remodelling and immune-modulation. *Biochim. Biophys. Acta* **2009**, *1796*, 19–26. [[CrossRef](#)]
87. Talreja, J.; Kabir, M.H.; B Filla, M.; Stechschulte, D.J.; Dileepan, K.N. Histamine induces Toll-like receptor 2 and 4 expression in endothelial cells and enhances sensitivity to Gram-positive and Gram-negative bacterial cell wall components. *Immunology* **2004**, *113*, 224–233. [[CrossRef](#)]
88. Hall, C.L.; Dubyk, C.W.; Riesenberger, T.A.; Shein, D.; Keller, E.T.; van Golen, K.L. Type I collagen receptor (alpha2beta1) signaling promotes prostate cancer invasion through RhoC GTPase. *Neoplasia* **2008**, *10*, 797–803. [[CrossRef](#)]
89. Chen, Q.; Manning, C.D.; Millar, H.; McCabe, F.L.; Ferrante, C.; Sharp, C.; Shahied-Arruda, L.; Doshi, P.; Nakada, M.T.; Anderson, G.M. CNTO 95, a fully human anti alphav integrin antibody, inhibits cell signaling, migration, invasion, and spontaneous metastasis of human breast cancer cells. *Clin. Exp. Metastasis* **2008**, *25*, 139–148. [[CrossRef](#)]
90. Ginsberg, M.H. Integrin activation. *BMB Rep.* **2014**, *47*, 655–659. [[CrossRef](#)]

91. Wei, X.; Wang, X.; Zhan, J.; Chen, Y.; Fang, W.; Zhang, L.; Zhang, H. Smurf1 inhibits integrin activation by controlling Kindlin-2 ubiquitination and degradation. *J. Cell Biol.* **2017**, *216*, 1455–1471. [[CrossRef](#)]
92. Matsuo, Y.; Sawai, H.; Ochi, N.; Yasuda, A.; Sakamoto, M.; Takahashi, H.; Funahashi, H.; Takeyama, H.; Guha, S. Proteasome inhibitor MG132 inhibits angiogenesis in pancreatic cancer by blocking NF-kappaB activity. *Dig. Dis. Sci.* **2010**, *55*, 1167–1176. [[CrossRef](#)]
93. Geng, L.; Chaudhuri, A.; Talmon, G.; Wisecarver, J.L.; Wang, J. TGF-Beta suppresses VEGFA-mediated angiogenesis in colon cancer metastasis. *PLoS ONE* **2013**, *8*, e59918. [[CrossRef](#)]
94. Jridi, I.; Catacchio, I.; Majdoub, H.; Shahbazzadeh, D.; El Ayeb, M.; Frassanito, M.A.; Solimando, A.; Ribatti, D.; Vacca, A.; Borchani, L. The small subunit of Hemilipin2, a new heterodimeric phospholipase A2 from Hemiscorpius lepturus scorpion venom, mediates the antiangiogenic effect of the whole protein. *Toxicon* **2017**, *126*, 38–46. [[CrossRef](#)]
95. Lobert, V.H.; Brech, A.; Pedersen, N.M.; Wesche, J.; Oppelt, A.; Malerød, L.; Stenmark, H. Ubiquitination of alpha 5 beta 1 integrin controls fibroblast migration through lysosomal degradation of fibronectin-integrin complexes. *Dev. Cell* **2010**, *19*, 148–159. [[CrossRef](#)]
96. Hsia, H.C.; Nair, M.R.; Corbett, S.A. The fate of internalized  $\alpha 5$  integrin is regulated by matrix-capable fibronectin. *J. Surg. Res.* **2014**, *191*, 268–279. [[CrossRef](#)]
97. Teckchandani, A.; Cooper, J.A. The ubiquitin-proteasome system regulates focal adhesions at the leading edge of migrating cells. *Elife* **2016**, *5*, e17440. [[CrossRef](#)]
98. Kleiger, G.; Mayor, T. Perilous journey: A tour of the ubiquitin-proteasome system. *Trends Cell Biol.* **2014**, *24*, 352–359. [[CrossRef](#)]
99. Homrich, M. Not Available. *Dtsch. Med. Wochenschr.* **2016**, *141*, 438–439.
100. Kim, S.; Harris, M.; Varner, J.A. Regulation of integrin alpha vbeta 3-mediated endothelial cell migration and angiogenesis by integrin alpha5beta1 and protein kinase A. *J. Biol. Chem.* **2000**, *275*, 33920–33928. [[CrossRef](#)]
101. Weis, S.M.; Cheresh, D.A.  $\alpha V$  integrins in angiogenesis and cancer. *Cold Spring Harb Perspect. Med.* **2011**, *1*, a006478. [[CrossRef](#)]
102. Ivanov, A.N.; Norkin, I.A.; Puchin'ian, D.M.; Shirokov, V.I.U.; Zhdanova, O.I.U. Endothelial cell adhesion molecules. *Uspekhi Fiziologicheskikh Nauk* **2014**, *45*, 34–49.
103. Arosio, D.; Manzoni, L.; Corno, C.; Perego, P. Integrin-Targeted Peptide- and Peptidomimetic-Drug Conjugates for the Treatment of Tumors. *Recent Pat. Anticancer Drug Discov.* **2017**, *12*, 148–168. [[CrossRef](#)]
104. Walsh, N.; Clynes, M.; Crown, J.; O'Donovan, N. Alterations in integrin expression modulates invasion of pancreatic cancer cells. *J. Exp. Clin. Cancer Res.* **2009**, *28*, 140. [[CrossRef](#)]
105. Weis, S.M.; Lindquist, J.N.; Barnes, L.A.; Lutu-Fuga, K.M.; Cui, J.; Wood, M.R.; Cheresh, D.A. Cooperation between VEGF and beta3 integrin during cardiac vascular development. *Blood* **2007**, *109*, 1962–1970. [[CrossRef](#)]
106. Reynolds, L.E.; Wyder, L.; Lively, J.C.; Taverna, D.; Robinson, S.D.; Huang, X.; Sheppard, D.; Hynes, R.O.; Hodivala-Dilke, K.M. Enhanced pathological angiogenesis in mice lacking beta3 integrin or beta3 and beta5 integrins. *Nat. Med.* **2002**, *8*, 27–34. [[CrossRef](#)]
107. Senger, D.R.; Claffey, K.P.; Benes, J.E.; Perruzzi, C.A.; Sergiou, A.P.; Detmar, M. Angiogenesis promoted by vascular endothelial growth factor: Regulation through alpha1beta1 and alpha2beta1 integrins. *Proc. Natl. Acad. Sci. USA* **1997**, *94*, 13612–13617. [[CrossRef](#)]
108. Pozzi, A.; Moberg, P.E.; Miles, L.A.; Wagner, S.; Soloway, P.; Gardner, H.A. Elevated matrix metalloprotease and angiostatin levels in integrin alpha 1 knockout mice cause reduced tumor vascularization. *Proc. Natl. Acad. Sci. USA* **2000**, *97*, 2202–2207. [[CrossRef](#)]
109. Zhang, Z.; Ramirez, N.E.; Yankeelov, T.E.; Li, Z.; Ford, L.E.; Qi, Y.; Pozzi, A.; Zutter, M.M. alpha2beta1 integrin expression in the tumor microenvironment enhances tumor angiogenesis in a tumor cell-specific manner. *Blood* **2008**, *111*, 1980–1988. [[CrossRef](#)]
110. San Antonio, J.D.; Zoeller, J.J.; Habursky, K.; Turner, K.; Pimtong, W.; Burrows, M.; Choi, S.; Basra, S.; Bennett, J.S.; DeGrado, W.F.; et al. A key role for the integrin alpha2beta1 in experimental and developmental angiogenesis. *Am. J. Pathol.* **2009**, *175*, 1338–1347. [[CrossRef](#)]
111. Ramirez, N.E.; Zhang, Z.; Madamanchi, A.; Boyd, K.L.; O'Rear, L.D.; Nashabi, A.; Li, Z.; Dupont, W.D.; Zijlstra, A.; Zutter, M.M. The  $\alpha 2 \beta 1$  integrin is a metastasis suppressor in mouse models and human cancer. *J. Clin. Investig.* **2011**, *121*, 226–237. [[CrossRef](#)] [[PubMed](#)]

112. Lei, L.; Liu, D.; Huang, Y.; Jovin, I.; Shai, S.Y.; Kyriakides, T.; Ross, R.S.; Giordano, F.J. Endothelial expression of beta1 integrin is required for embryonic vascular patterning and postnatal vascular remodeling. *Mol. Cell. Biol.* **2008**, *28*, 794–802. [[CrossRef](#)] [[PubMed](#)]
113. Hakanpaa, L.; Kiss, E.A.; Jacquemet, G.; Miinalainen, I.; Lerche, M.; Guzmán, C.; Mervaala, E.; Eklund, L.; Ivaska, J.; Saharinen, P. Targeting  $\beta$ 1-integrin inhibits vascular leakage in endotoxemia. *Proc. Natl. Acad. Sci. USA* **2018**, *115*, E6467–E6476. [[CrossRef](#)] [[PubMed](#)]
114. Avraamides, C.J.; Garmy-Susini, B.; Varner, J.A. Integrins in angiogenesis and lymphangiogenesis. *Nat. Rev. Cancer* **2008**, *8*, 604–617. [[CrossRef](#)] [[PubMed](#)]
115. Primo, L.; Seano, G.; Roca, C.; Maione, F.; Gagliardi, P.A.; Sessa, R.; Martinelli, M.; Giraudo, E.; di Blasio, L.; Bussolino, F. Increased expression of alpha6 integrin in endothelial cells unveils a proangiogenic role for basement membrane. *Cancer Res.* **2010**, *70*, 5759–5769. [[CrossRef](#)] [[PubMed](#)]



© 2019 by the authors. Licensee MDPI, Basel, Switzerland. This article is an open access article distributed under the terms and conditions of the Creative Commons Attribution (CC BY) license (<http://creativecommons.org/licenses/by/4.0/>).