

CORRECTION

Open Access



Correction to: Progress in studies of epidermal stem cells and their application in skin tissue engineering

Ronghua Yang¹, Shuai Yang², Jingling Zhao³, Ximin Hu⁴, Xiaodong Chen¹, Jingru Wang¹, Julin Xie^{3*} and Kun Xiong^{5,6*}

Correction to: *Stem Cell Res Ther* (2020) 11:303

<https://doi.org/10.1186/s13287-020-01796-3>

The authors wish to note the following in this correction article:

Figure 1 in the original article [1] was based on Fig. 3 in a previous article by Fujiwara et al. [2].

The original article can be found online at <https://doi.org/10.1186/s13287-020-01796-3>.

*Correspondence: [syxiejl90@sohu.com](mailto:syxiej90@sohu.com); xiongkun2001@163.com

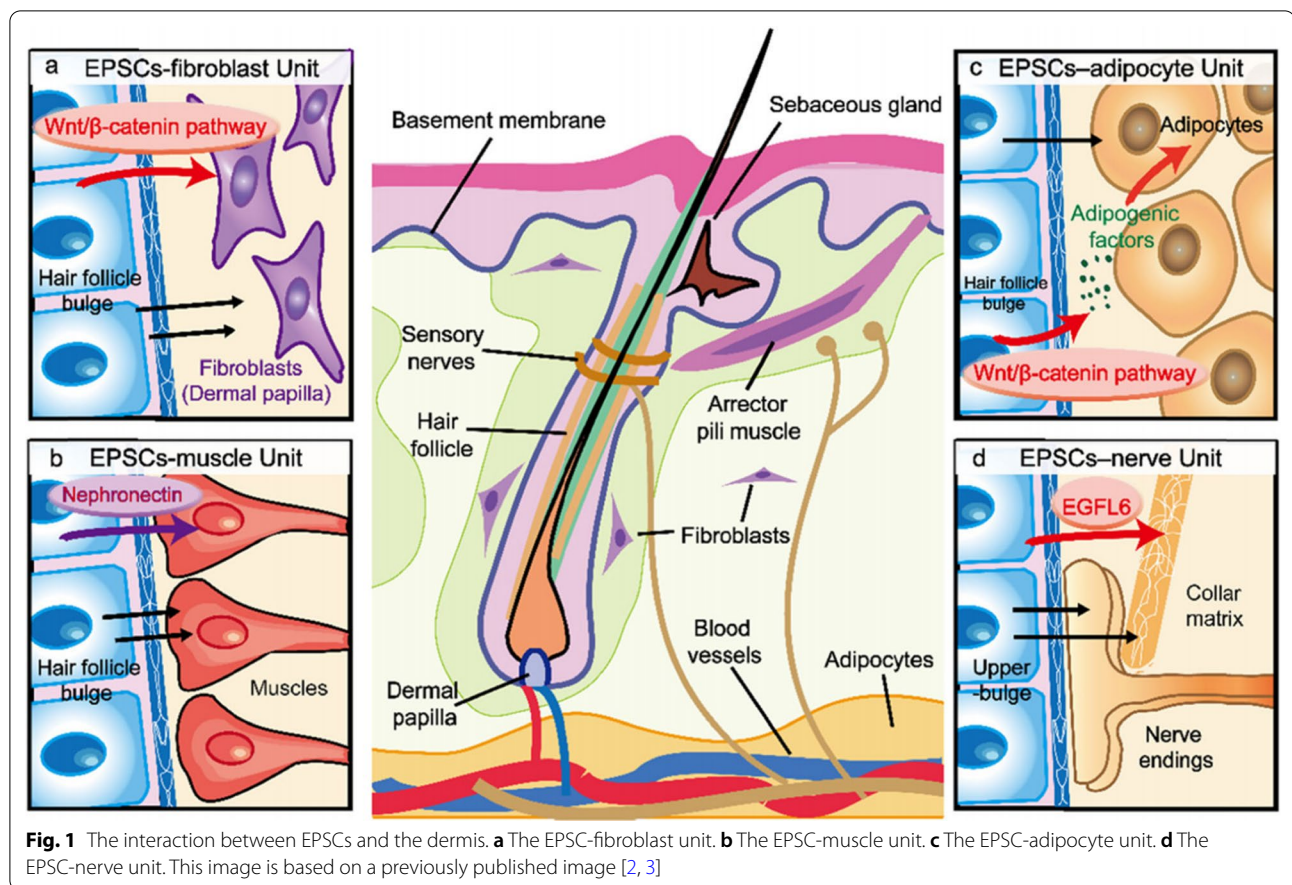
³ Department of Burn Surgery, First Affiliated Hospital of Sun Yat-Sen University, Guangzhou 510080, Guangdong, China

⁵ Department of Anatomy and Neurobiology, School of Basic Medical Science, Central South University, Morphological Sciences Building, 172 Tongzi Po Road, Changsha 410013, Hunan, China

Full list of author information is available at the end of the article



© The Author(s) 2022. **Open Access** This article is licensed under a Creative Commons Attribution 4.0 International License, which permits use, sharing, adaptation, distribution and reproduction in any medium or format, as long as you give appropriate credit to the original author(s) and the source, provide a link to the Creative Commons licence, and indicate if changes were made. The images or other third party material in this article are included in the article's Creative Commons licence, unless indicated otherwise in a credit line to the material. If material is not included in the article's Creative Commons licence and your intended use is not permitted by statutory regulation or exceeds the permitted use, you will need to obtain permission directly from the copyright holder. To view a copy of this licence, visit <http://creativecommons.org/licenses/by/4.0/>. The Creative Commons Public Domain Dedication waiver (<http://creativecommons.org/publicdomain/zero/1.0/>) applies to the data made available in this article, unless otherwise stated in a credit line to the data.



Author details

¹Department of Burn Surgery, The First People’s Hospital of Foshan, Foshan 528000, China. ²Department of Neurosurgery, The First Affiliated Hospital of Sun Yat-Sen University, Guangzhou 510080, Guangdong, China. ³Department of Burn Surgery, First Affiliated Hospital of Sun Yat-Sen University, Guangzhou 510080, Guangdong, China. ⁴Clinical Medicine Eight-Year Program, 02 Class, 17 Grade, Xiangya School of Medicine, Central South University, Changsha 410013, Hunan, China. ⁵Department of Anatomy and Neurobiology, School of Basic Medical Science, Central South University, Morphological Sciences Building, 172 Tongzi Po Road, Changsha 410013, Hunan, China. ⁶Hunan Key Laboratory of Ophthalmology, Changsha 410008, Hunan, China.

Published online: 05 May 2022

References

1. Yang R, Yang S, Zhao J, Hu X, Chen X, Wang J, et al. Progress in studies of epidermal stem cells and their application in skin tissue engineering. *Stem Cell Res Ther.* 2020;11(1):303. <https://doi.org/10.1186/s13287-020-01796-3>.
2. Fujiwara H, Tsutsui K, Morita R. Multi-tasking epidermal stem cells: beyond epidermal maintenance. *Dev Growth Differ.* 2018;60(9):531–41. <https://doi.org/10.1111/dgd.12577>.
3. Driskell RR, Watt FM. Understanding fibroblast heterogeneity in the skin. *Trends Cell Biol.* 2015;25:92–9. <https://doi.org/10.1016/j.tcb.2014.10.001>.

Publisher’s Note

Springer Nature remains neutral with regard to jurisdictional claims in published maps and institutional affiliations.

Ready to submit your research? Choose BMC and benefit from:

- fast, convenient online submission
- thorough peer review by experienced researchers in your field
- rapid publication on acceptance
- support for research data, including large and complex data types
- gold Open Access which fosters wider collaboration and increased citations
- maximum visibility for your research: over 100M website views per year

At BMC, research is always in progress.

Learn more biomedcentral.com/submissions

