


ARTICLE

DOI: 10.1038/s41467-018-05397-w

OPEN

Two-dimensional multibit optoelectronic memory with broadband spectrum distinction

Du Xiang^{1,2}, Tao Liu^{2,3}, Jilian Xu⁴, Jun Y. Tan², Zehua Hu^{2,3}, Bo Lei^{2,3}, Yue Zheng^{2,3}, Jing Wu⁵, A.H.Castro Neto ^{2,3}, Lei Liu⁴ & Wei Chen^{1,2,3,6}

Optoelectronic memory plays a vital role in modern semiconductor industry. The fast emerging requirements for device miniaturization and structural flexibility have diverted research interest to two-dimensional thin layered materials. Here, we report a multibit nonvolatile optoelectronic memory based on a heterostructure of monolayer tungsten diselenide and few-layer hexagonal boron nitride. The tungsten diselenide/boron nitride memory exhibits a memory switching ratio approximately 1.1×10^6 , which ensures over 128 (7 bit) distinct storage states. The memory demonstrates robustness with retention time over 4.5×10^4 s. Moreover, the ability of broadband spectrum distinction enables its application in filter-free color image sensor. This concept is further validated through the realization of integrated tungsten diselenide/boron nitride pixel matrix which captured a specific image recording the three primary colors (red, green, and blue). The heterostructure architecture is also applicable to other two-dimensional materials, which is confirmed by the realization of black phosphorus/boron nitride optoelectronic memory.

¹Department of Chemistry, National University of Singapore, Singapore 117543, Singapore. ²Centre for Advanced 2D Materials and Graphene Research Centre, National University of Singapore, 6 Science Drive 2, Singapore 117546, Singapore. ³Department of Physics, National University of Singapore, Singapore 117542, Singapore. ⁴State Key Laboratory of Luminescence and Applications, Changchun Institute of Optics, Fine Mechanics and Physics, Chinese Academy of Sciences, No. 3888 Dongnanhu Road, Changchun 130033, People's Republic of China. ⁵Institute of Materials Research and Engineering (IMRE), 2 Fusionopolis Way, Singapore 138634, Singapore. ⁶National University of Singapore (Suzhou) Research Institute, 377 Lin Quan Street, Suzhou Industrial Park, Jiang Su 215123, China. These authors contributed equally: Du Xiang, Tao Liu. Correspondence and requests for materials should be addressed to W.C. (email: phycw@nus.edu.sg)

Optoelectronic memories have attracted tremendous attention owing to its unique capability of accumulating and releasing photo-generated carriers under electrical stress and light irradiation^{1–4}. This advantage enables the great potential of optoelectronic memories in image capturing, confidential information recording, and logic data processing^{3–5}. Last decades have witnessed the exponential advances of silicon-based nonvolatile optoelectronic memories^{5–7}. However, the continued device miniaturization and the feasibility of integration into flexible, wearable, and transparent circuits greatly restrict the development of conventional silicon-based optoelectronic memories^{8, 9}.

Two-dimensional (2D) thin layered materials have been considered as promising building blocks for the next-generation electronic and optoelectronic devices due to their extraordinary and unique properties^{10, 11}. The 2D thin layered structure enables their immunity against the short channel effects^{9, 12}, while the mechanical strength and structural flatness allow their integration into flexible and wearable circuits^{13, 14}. In comparison to the massive research of 2D materials-based photoconductors and photodiodes^{15–19}, the nonvolatile optoelectronic memories fabricated by these materials are rarely investigated. Mechanically exfoliated few-layer copper indium selenide (CuIn₇Se₁₁) was firstly applied in 2D thin layered optoelectronic memory²⁰, however, the short retention time (approximately 50 s) and low current switching ratio (less than 10) hindered its application in image sensing. Monolayer molybdenum disulfide (MoS₂) optoelectronic memory was reported to possess long retention time (approximately 10⁴ s), while suffering from moderate switching ratio (approximately 4700) and limited data storage capacity (8 storage levels)²¹. Besides the memory devices fabricated by single 2D crystals, graphene/MoS₂ vertical heterostructure was also realized with low switching ratio (less than two)²². Recently, the 2D materials-based semifloating-gate field-effect-transistor and metallic gold nanoparticles/crosslinked poly(4-vinylphenol)/MoS₂ heterostructure memories have been reported, demonstrating high switching ratio, which are promising candidates for thin layered multibit optoelectronic memory^{23–25}. In order to enhance the data storage capability of a single optoelectronic memory, it is essential to increase the number of storage level, which is typically reflected by the difference of reading currents between a programmed state and an erased state¹.

In addition to data storage capability, an optoelectronic memory that can distinguish light wavelength is highly demanded for color sensing in digital imaging^{26–28}. Spectrum distinction in the commercial color sensors is achieved by combining the broadband inorganic semiconductor-based photodetectors with a set of optical filters, including organic dye filters and plasmonic color filters^{28–30}. However, these filters not only increase the architectural complexity and cost of the color sensors, but also limit the pixel density in imaging system^{31, 32}. Furthermore, the image sharpness and color constancy would be degraded by the interference effect of the optical filter³¹. In order to simplify system structure, reduce fabrication cost, and improve image quality, it is essential to design filter-free optoelectronic memory in a single device with the same spectrum distinguishing capability as human eyes³³.

Here, we report a multibit nonvolatile optoelectronic memory-based on a hybrid structure of thin layered tungsten diselenide (WSe₂) and boron nitride (BN). The storage current of the WSe₂/BN optoelectronic memory can be effectively modulated by backgate, resulting in a memory switching ratio approximately 1.1 × 10⁶. This large switching ratio coupled with the optically tunable characteristic ensures over 128 distinct storage levels (7 bit storage). The device is also highly reliable, as reflected by its long retention time and large number of program-erase testing

cycles. Moreover, the wavelength distinguishing property of the memory promises WSe₂/BN heterostructure for the application in filter-free color image sensor. This is illustrated by fabricating an array of the heterostructure-based optoelectronic memory on large area chemical vapor deposition (CVD) WSe₂, in which a specific image recording the three primary lights (red, green, and blue) is created. The optoelectronic memory based on black phosphorous (BP) and BN heterostructure is also demonstrated with excellent data storage property.

Results

Operational mechanism of WSe₂/BN optoelectronic memory.

Figure 1a shows the schematic of the hybrid WSe₂/BN optoelectronic memory fabricated in a field-effect-transistor (FET) structure, in which monolayer WSe₂ flake is transferred on top of a BN flake. The crystallinity and thicknesses of both WSe₂ and BN are characterized by Raman and AFM, respectively (Supplementary Figs. 1 and 2 and Supplementary Note 1). The hybrid WSe₂/BN FET demonstrates typical p-type transport behavior (Fig. 1b), in good agreement with previous reports³⁴.

Figure 1c shows the dynamic behavior of the WSe₂/BN optoelectronic memory in a single cycle, which includes programming, readout, and erasing processes. The mechanism of these three processes is illustrated in Fig. 1d–f, respectively. Since WSe₂ is intrinsically p-type, the current of the pristine WSe₂/BN FET in the positive gate regime is considerably low. In order to program the memory, the device is illuminated by a light pulse (duration 0.5 s, wavelength 405 nm, intensity 210 mW cm⁻²) under negative gate pulse, which results in remarkable excitation of electrons from the mid-gap donor-like states (defects) of BN to its conduction band (Fig. 1d)³⁵. The photon-excited electrons in BN conduction band can transfer into WSe₂ driven by the electric field, leaving the positive charges localized in middle of the BN bandgap. It is worth noting that these localized positive charges in BN can effectively screen the negative gate and hence weaken the electric field exerting on WSe₂ during the programming process (Supplementary Fig. 3). The elimination of the effective electric field in BN symbolizes the termination of the programming process. The positive charges can be stored in BN even after removing the negative gate and switching off the light, thereby serving as an effective local gate and generating a stable electron-storage effect in WSe₂. The storage current I_{store} after programming is readout at a positive gate under dark condition, as shown in Fig. 1e. When the gate was switched to 50 V, a sharp rise of current was observed, followed by stabilization at around 22 nA, which indicates the nonvolatile property of the WSe₂/BN memory (Fig. 1c).

The erasing operation is realized by applying positive gate on WSe₂/BN with light illumination (Fig. 1f). In this process, the ionized positive defects in BN are filled by photon-excited electrons from BN valence band, generating large quantity of holes. Attributing to the external electric field, the generated holes in BN move to WSe₂. As a consequence, the localized positive charges in BN are vanished and the device returns to its original hole-dominance transport behavior after erasing, as shown in Fig. 1b. It is noted that the charge erasing is completed in 2 s, indicating the fast switching of the WSe₂/BN memory. Moreover, the average erased current I_{erase} is read as 1.3 × 10⁻¹² A (inset of Fig. 1c), contributing to a large switching ratio with $I_{\text{store}}/I_{\text{erase}}$ approximately 1.7 × 10⁴.

Programming gate controlled optoelectronic memory.

Figure 2a shows the transfer characteristics evolution of the WSe₂/BN device under different programming gate (V_{pro} from 0 V to -80 V). The on current in electron-dominance regime gradually

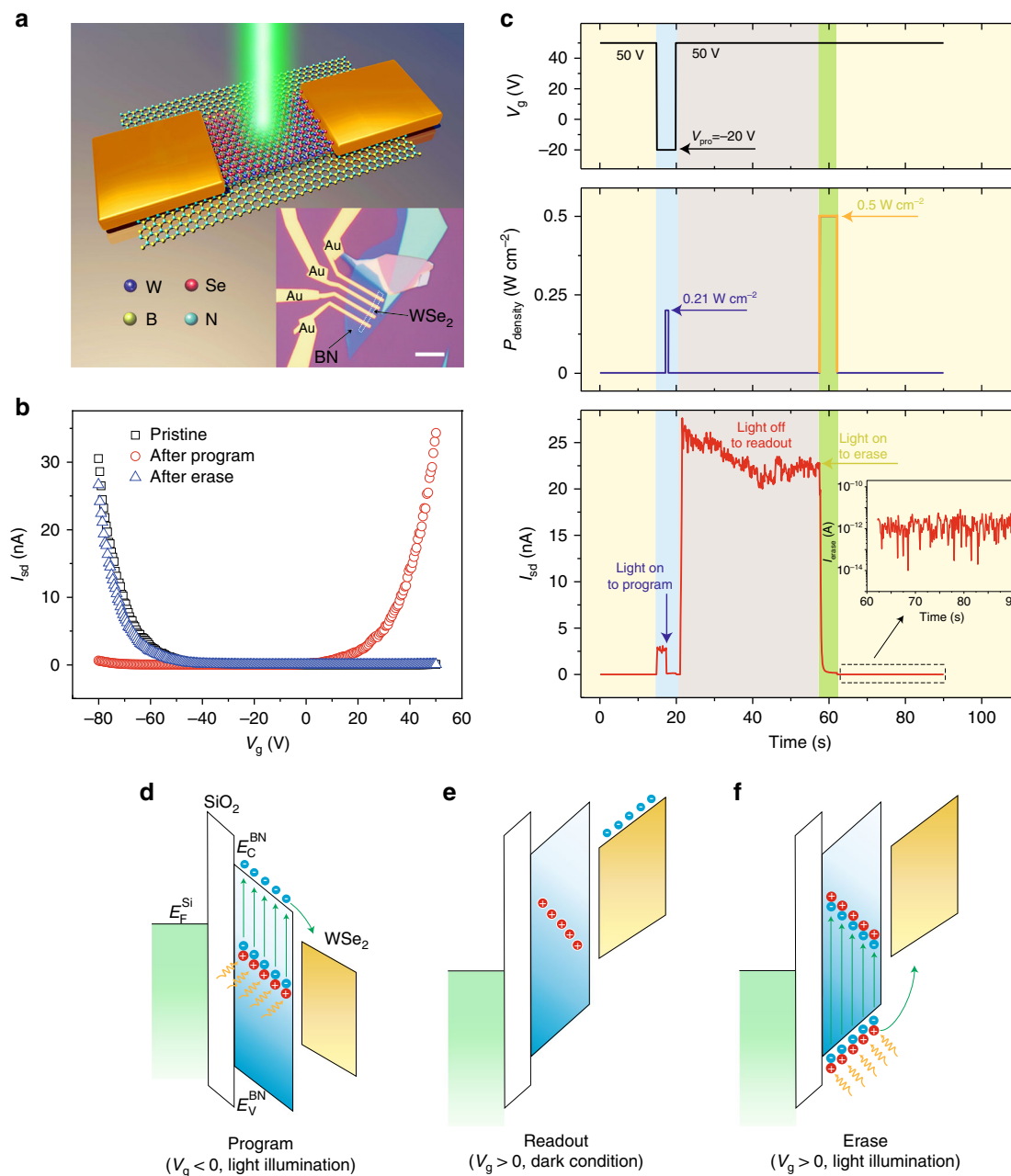


Fig. 1 Operational mechanism of the WSe₂/BN heterostructure-based optoelectronic memory. **a** Schematic illustration of the optoelectronic memory fabricated by transferring WSe₂ flake on BN flake. The dark blue, red, yellow, and light blue balls represent the W, Se, B, and N atoms, respectively. Inset: optical image of the fabricated WSe₂/BN heterostructure. The scale bar is 10 μm. **b** The transfer curves of pristine, programmed, and erased WSe₂/BN device at V_{sd} = 1 V. The programming gate is -20 V. The transport characteristic of the WSe₂/BN FET was converted from hole-dominant to electron-dominant after programming, followed by a return to hole-dominant after erasing. **c** A single program-readout-erase cycle of the WSe₂/BN memory at V_{pro} = -20 V. The shaded backgrounds in light yellow, blue, gray, and green represent the device states as pristine, programming, readout, and erasing, respectively. Inset: plot of the erased current. Schematic of the band diagrams of the WSe₂/BN optoelectronic memory under programming (**d**), readout (**e**), and erasing processes (**f**). The rectangle in grayish green represents the Si band diagram, while the parallelograms in white, blue and khaki represent the band diagrams of SiO₂, BN, and WSe₂, respectively. The red and blue circles represent the positive charges and electrons, respectively. E_F^{Si} is the Fermi level energy of Si substrate. E_C^{BN} and E_V^{BN} represent the minimum energy of conduction band and the maximum energy of valence band of BN, respectively

rises with increasing V_{pro}, which indicates a significant gate-tunable electron-doping effect on WSe₂. The dynamic behavior of the WSe₂/BN optoelectronic memory modulated by V_{pro} is also investigated (Fig. 2b). When the V_{pro} is switched from 0 V to -80 V with -10 V step, the storage current increases stepwise, generating 9 clear storage states. The switching ratio at different V_{pro} is obtained through extracting the storage current. As shown in

Fig. 2c, the switching ratio is largely enhanced from 3.8 × 10³ to 1.1 × 10⁶ when V_{pro} increases from 0 to -80 V. The larger negative backgate can better stabilize the generated positive charges in middle of the BN bandgap and facilitate the formation of higher concentration of positive charges in BN, which can result in more effective electron-doping and greater storage current in WSe₂.

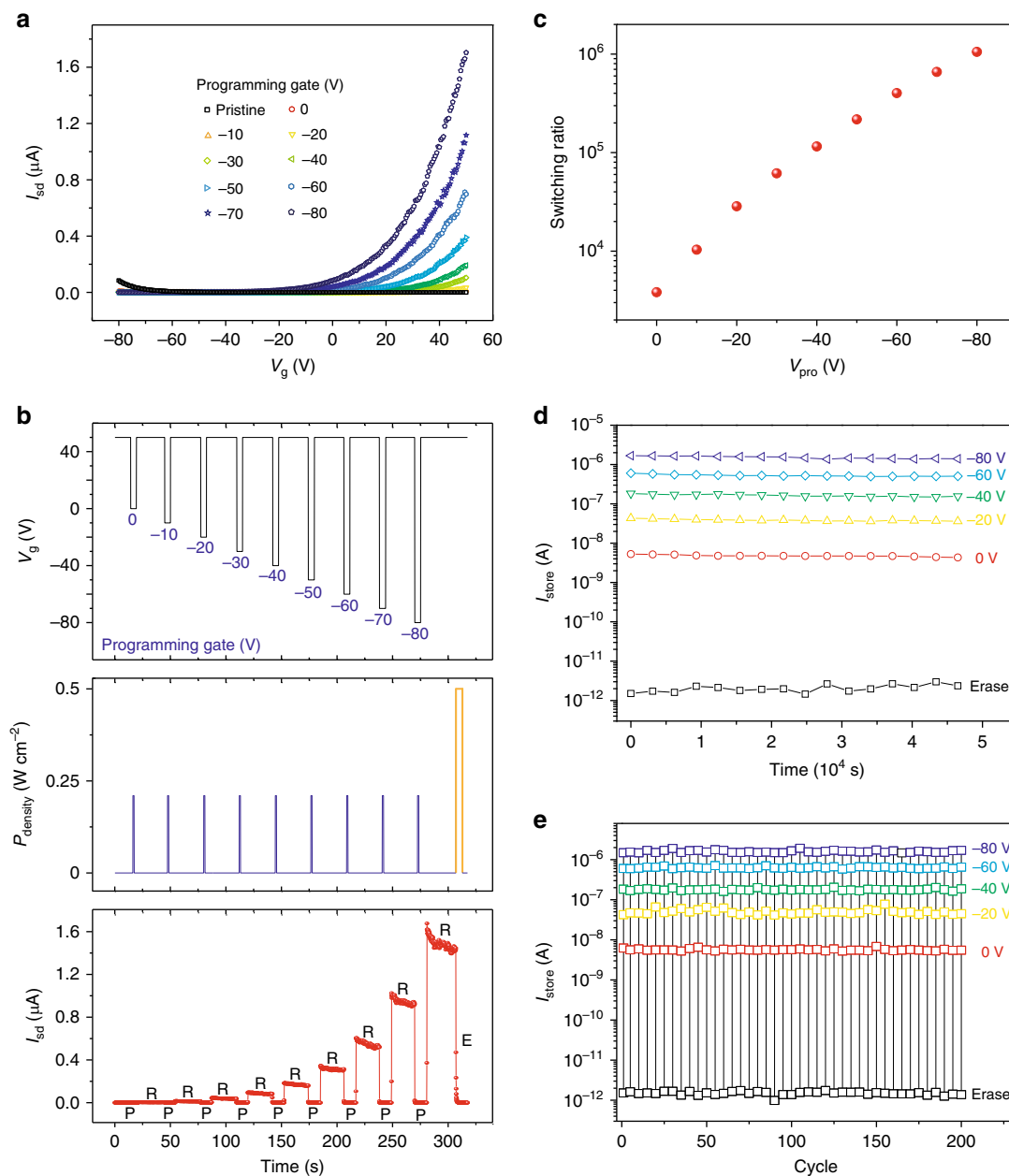


Fig. 2 Programming gate controlled WSe_2/BN optoelectronic memory and reliability tests. **a** Transfer characteristics evolution of the memory device with respect to V_{pro} . **b** Dynamic behavior of the memory at different programming gate ranging from 0 to -80 V with step -10 V. The readout current increases stepwise, generating nine clear storage states. **c** The plot of switching ratio as a function of V_{pro} . Current retention (**d**) and cycling tests (**e**) for the WSe_2/BN memory at different V_{pro} ($V_{\text{pro}} = 0, -20, -40, -60, \text{ and } -80$ V). The squares in black represent the device in the erased state, while the symbols in red, yellow, green, blue, and purple represent the programmed state under $V_{\text{pro}} = 0, -20, -40, -60, \text{ and } -80$ V, respectively

In order to evaluate the reliability of our optoelectronic memory for practical application, we investigate both the retention time and the cyclic program/erase endurance of our device. Figure 2d shows the nonvolatile and data retention property of the memory under different V_{pro} , in which highly stabilized storage states are observed within the time range of 4.5×10^4 s. It is worth noting that the memory is kept isolated in the absence of any external perturbation (no voltage and no light) after programming and the storage currents in Fig. 2d were extracted in a fixed interval of 3.1×10^3 s (Supplementary Fig. 4). The retention curves are then extrapolated to 10 years, which is a technical requirement for commercial nonvolatile memory (Supplementary Fig. 5). Nearly half the stored currents are expected to be maintained after 10 years with clearly

distinguished storage states, indicating the excellent data retention property of the WSe_2/BN optoelectronic memory. Figure 2e displays the repeatability of the program/erase process at different V_{pro} (0, -20, -40, -60, and -80 V) for 200 cycles. The deviation from the average value of the readout currents for each V_{pro} is less than 10%, indicating that the programmed data is highly reproducible. Given the ultralong retention time and robust cyclic endurance, WSe_2/BN optoelectronic memory demonstrates potential for practical applications.

One hundred thirty current-level optoelectronic memory. WSe_2/BN optoelectronic memory demonstrates high switching ratio, which indicates the possibility to achieve multibit memory

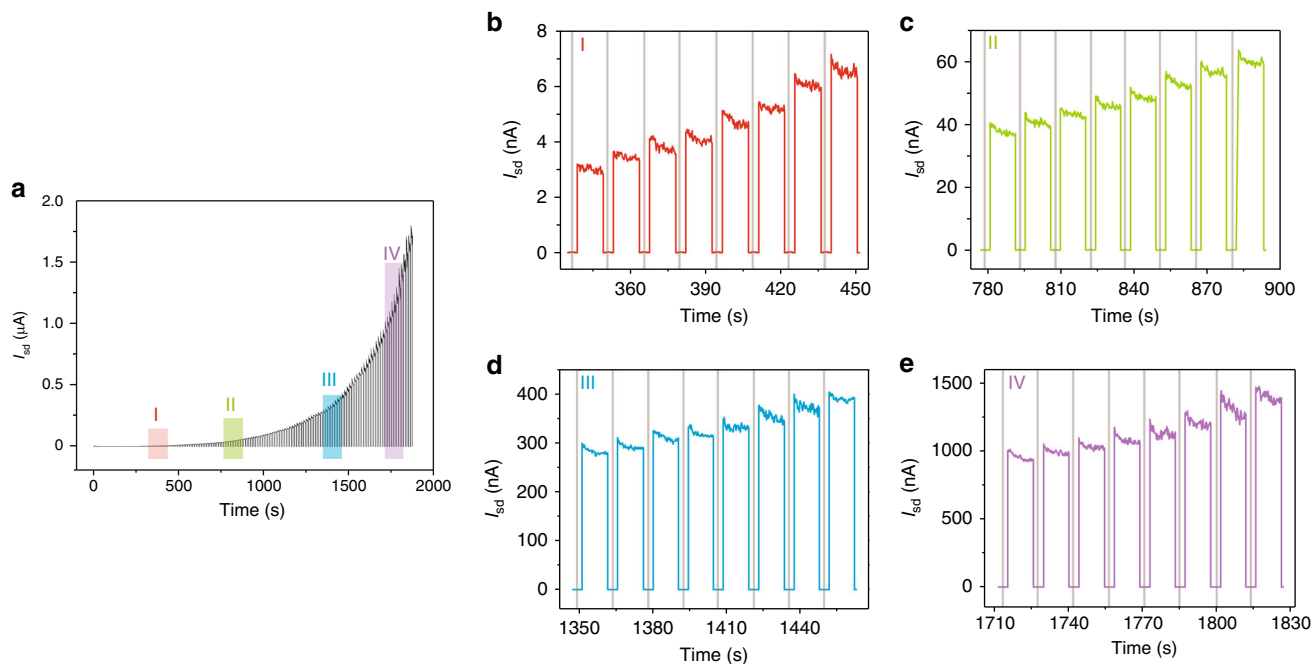


Fig. 3 One hundred thirty storage states. **a** The dynamic behavior of the memory under the exposure of light pulse ($t_{\text{pro}} = 0.5$ s, $\lambda = 405$ nm, $P = 2$ nW) at $V_{\text{pro}} = -80$ V, and the enlargements in region I (**b**), II (**c**), III (**d**), and IV (**e**), respectively. The regions shaded in red, green, blue, and purple in **a** correspond to the enlarged regions plotted in the same colors in **b–e**, respectively

with excellent storage capability. Figure 3a shows the dynamic behavior of the memory under periodic exposures of light pulse (130 pulses, $t_{\text{pro}} = 0.5$ s, $\lambda = 405$ nm, $P = 2$ nW) at $V_{\text{pro}} = -80$ V, and Fig. 3b–e are the enlarged regions I–IV, respectively. The storage current rises progressively with increasing the pulse number, a phenomenon represents the continual accumulation of electrons in WSe_2 as prolonging the light exposure on the memory. One hundred thirty light pulses are employed in our experiment, resulting in 130 effective storage states before the current saturation (Supplementary Fig. 6 and Supplementary Note 2). The reliability of the storage states is evaluated by comparing the gaps of two neighboring states and their noise (Supplementary Fig. 7 and Supplementary Note 3). The result demonstrates that all the storage states for our WSe_2/BN optoelectronic memory are valid. We have repeated the program-erase cycle for 20 times, and at least 130 valid storage levels were achieved for all the 20 independent cycles, which suggests the excellent repeatability of the WSe_2/BN memory. The dynamic behavior of the 1st, 10th, and 20th cycle is shown in Supplementary Fig. 8 for illustration. The storage current rises progressively with increasing pulses, followed by a gradual saturation when the pulse number goes beyond 130, which is consistent with the result shown in Fig. 3a. The Y ratios for all the selected cycles have also been plotted in Supplementary Fig. 8, indicating the validity of the 130 states for each cycle by ensuring $Y > 1$. We propose that the repeatability is mainly due to the similar erased currents (in the magnitude of 10^{-12} A) after each cycle (Supplementary Fig. 9). The same level of base current means the same starting point for each independent cycle, which ensures the high repeatability of the WSe_2/BN memory. The weak fluctuation of the storage currents can be attributed to the noise and the instability of our laser pulse system. Therefore, we have successfully fabricated a 130 current-level optoelectronic memory by using 2D thin layered heterostructure with data storage capacity over 7 bit (128 levels). It is worth mentioning that the number of storage states in our memory is limited by the noise level. More storage states could be achieved by further minimizing the noise.

Moreover, the memory device can be operated under the light energy of 1 nJ (light power multiplies exposure time), indicating its high light sensitivity.

Spectrum distinction of WSe_2/BN optoelectronic memory.

Optoelectronic memory with the capability of wavelength discrimination is particularly superior for the application of filter-free color image sensor. Figure 4a shows the dynamic behavior of the WSe_2/BN optoelectronic memory illuminated by light with wavelengths from 750 (1.65 eV) to 410 nm (3.02 eV). The corresponding readout current increases stepwise from 3×10^{-2} to $1.5 \mu\text{A}$ when the wavelength decreases from 750 to 410 nm. The on current in the electron-domination regime after each programming process also rises gradually when shortening the programming wavelength (Fig. 4b), in good agreement with the dynamic results. Moreover, the storage states at different wavelengths are highly distinct, indicating excellent wavelength distinguishing capability of the WSe_2/BN optoelectronic memory. In order to quantify the modulating ability of different wavelengths, we define the programming rate (PR) as below,

$$\text{PR} = \frac{I_{\text{store}}}{P_{\text{density}} \cdot S \cdot t_{\text{pro}}} \quad (1)$$

Where P_{density} is the power density of light, S is the device area. The relationship between PR and photon energy is plotted in Fig. 4c. The monotonic increase of PR with photon energy suggests that light with higher photon energy (shorter wavelength) can induce greater amount of stable localized positive charges in BN in a unit time. It is to note that the PR starts increasing rapidly when the photon energy exceeds 2.6 eV. Previous works have reported that the light absorption by the donor-like states in BN is strongly enhanced at the photon energy around 2.6 eV, originating from the nitrogen vacancy in BN crystal^{35–37}. This phenomenon is in good agreement with our experimental result.

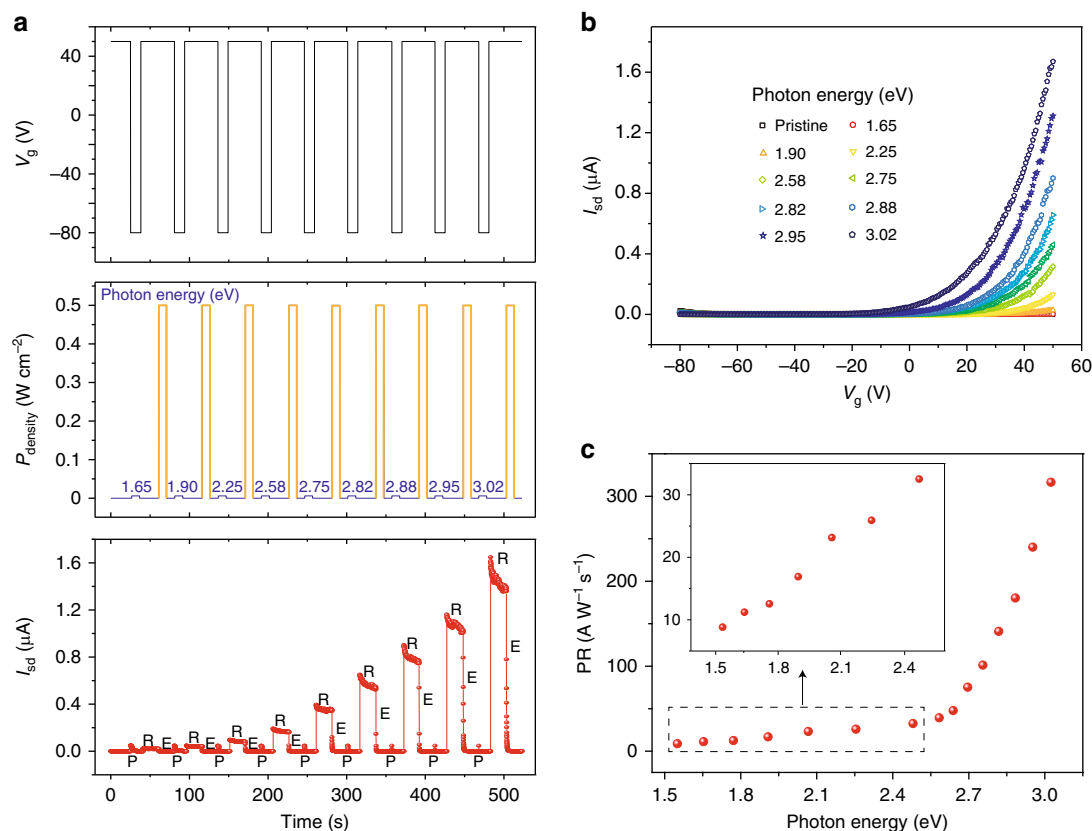


Fig. 4 Wavelength distinguishing ability of WSe_2/BN optoelectronic memory. **a** Dynamic behavior of the WSe_2/BN memory illuminated by a wide spectrum of lights with wavelength ranging from 750 to 410 nm. Nine distinguishable storage states are clearly observed under different programming wavelengths. **b** The corresponding transfer characteristic with respect to wavelength after each programming. **c** Programming rate as a function of photon energy. Inset: plot of the enlargement from 1.55 to 2.48 eV

Integrated memory matrix for color image sensor. WSe_2/BN optoelectronic memory are capable of detecting and discriminating lights with different wavelengths, indicating its potential for the application of filter-free color image sensors. Besides, in order to realize practical application, it is essential to fabricate large quantity of image sensors in an integrated circuit. The large area CVD grown WSe_2 is used to fabricate the sensor matrix, with its monolayer characteristic confirmed by the Raman and PL spectra (Supplementary Fig. 10). Figure 5a displays a false-colored SEM image of the integrated pixel matrix with 27 WSe_2/BN image sensors arranged in a 3×9 array. The darker color in the upper right part of the image is due to the slight thickness variation of BN substrate (Supplementary Fig. 11). It is worth noting that each pixel with channel length approximately 2 μm is able to function independently since they are isolated by e-beam lithography (EBL) and deep reactive ion etch (RIE). In order to investigate the color sensing property of an individual pixel and the image capture ability of the matrix, three laser beams (spot diameter 3 μm) with different wavelengths (red 638 nm, green 515 nm, and blue 473 nm) are used to expose the selected pixels in sequence. Three pixel groups (group I: 11, 13, 21, 22, 23, 31, 33; group II: 14, 16, 24, 26, 34, 35, 36; and group III: 17, 19, 27, 29, 37, 39) record the three different lights, while the other pixels are left unexposed. Figure 5b demonstrates the corresponding schematic of the matrix after selective exposures. The image NUS is captured in the matrix, in which N, U, and S record the three different lights (red, green, and blue), respectively. More intriguingly, the three different pixel groups display three distinct storage states with slightly fluctuated I_{store} 5, 12, and 31 nA,

respectively (Supplementary Fig. 12), which enables the realization of a color image.

BP/BN optoelectronic memory. The heterostructure-based optoelectronic memory can be applied to other 2D crystals. BP, a 2D material, has been widely investigated recently due to its superior optical and electrical transport properties^{17, 38, 39}. The BP/BN optoelectronic memory fabricated in the same configuration also demonstrates excellent data storage ability (Supplementary Figs. 13–15 and Supplementary Note 4). The storage states of the BP/BN memory can be effectively modulated by light wavelength and the device possesses high reliability (Supplementary Figs. 16 and 17), which are similar to the WSe_2/BN memory. However, the switching ratio of the BP/BN memory (around 415) is lower than that of the WSe_2/BN device, which is mainly due to the large off current of our BP FET. It is possible to further improve the switching ratio by selecting thinner BP flakes³⁸. Unexpectedly, the BP/BN heterostructure is particularly sensitive to weak light. An ultrahigh photo responsivity approximately $1.2 \times 10^7 \text{ A W}^{-1}$ is observed for the device, making BP/BN heterostructure a promising candidate for photodetector application (Supplementary Fig. 18 and Supplementary Note 5).

Discussion

We have demonstrated a multibit nonvolatile optoelectronic memory-based on the 2D thin layered WSe_2/BN heterostructure. The programming and erasing processes of the memory are

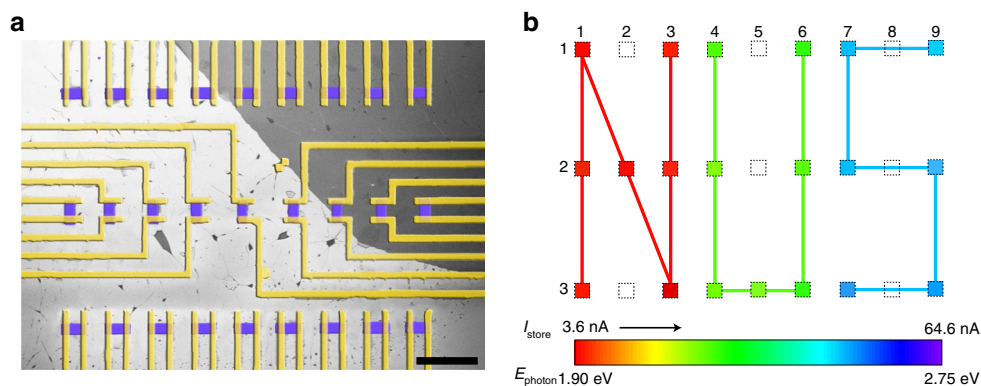


Fig. 5 Integrated WSe₂/BN pixel matrix for color image sensor. **a** False-colored SEM image of the fabricated WSe₂/BN pixel matrix in arrays (three rows and nine columns). The scale bar is 10 μm. The channel length is almost the same for each pixel after deep RIE etching, approximately 2 μm. **b** The corresponding schematic of the pixel matrix with selective exposure under three different wavelength lights (red 638 nm, green 515 nm, and blue 473 nm). The programming gate, time and laser power were fixed the same as -80 V, 2 s, and 10 nW, respectively for each exposure. The color bar was achieved by reading the storage current of pixel 11 under different lights with photon energy (E_{photon}) from 1.90 to 2.75 eV

controlled by tuning the polarity of the backgate. During the programming process, the photon-generated electrons from the mid-gap donor-like states of BN transfer into WSe₂ under negative gate, and lead to the storage of localized positive charges in middle of the BN bandgap, which can serve as effective local gate to modulate the transport behavior of WSe₂. During the erasing process, by applying positive gate, the localized positive charges stored in BN recombine with the photo-excited electrons from the BN valence band, thereby eliminating the local gating effect and restoring the original transport behavior of WSe₂. The switching ratio of the memory can reach up to 1.1×10^6 under $V_{\text{pro}} = -80$ V, ensuring 130 distinguishable storage states. The memory device exhibits excellent performance for data retention (over 4.5×10^4 s) and cyclic endurance (exceeding 200 cycles). Moreover, the WSe₂/BN device is able to discriminate wavelengths in the full visible spectrum, indicating its potential to be used as filter-free color image sensor. This concept is further supported by the realization of WSe₂/BN pixel matrix which captures a specific image recording the three primary colors. The discovery of 2D thin layered heterostructure-based optoelectronic memory provides a simple method to achieve multibit memory device. The realization of pixel matrix indicates the possibility of fabricating 2D thin layered image sensors in integrated circuit, which paves the way for the next-generation optoelectronic memories.

Methods

Fabrication and characterization of optoelectronic memory. The hybrid structure of WSe₂ and BN was achieved by a dry transfer method⁴⁰. Firstly, few-layer BN flakes with thickness around 10 nm were mechanically exfoliated onto 300 nm SiO₂/Si substrate. In the following, the WSe₂ flake exfoliated on a transparent polydimethylsiloxane (PDMS) substrate was aligned on the BN flake using optical microscope. After the alignment, the PDMS film was pressed on the Si substrate for 2 min followed by a slow lift up, during which the WSe₂ flake was transferred onto the BN flake. The BP/BN heterostructure was obtained by the same dry transfer method. To avoid oxidation of the BP flakes, the experiment was carried out in a glovebox. Standard EBL was employed to define the memory channel and the electrodes (Ti/Au) was deposited by thermal evaporation. After lift-off, the memory device was loaded into a vacuum chamber (pressure below 10^{-7} mbar) for characterizations. The optoelectronic measurements were conducted by using an Agilent 2912A source measure unit. Four laser beams (638, 515, 473, and 405 nm) and an exon light source configured with a monochromator were used to program or erase the memories. The light density was calibrated by THORLABS GmbH (PM 100A) power meter.

CVD WSe₂ growth. A one-zone tube furnace was used to grow WSe₂⁴¹. Hundred milligram Se powder (Sigma-Aldrich, 99.5%) was loaded at upstream, and kept at 300 °C during growth. A mixture of WO_{2.9} (30 mg, Alfa Aesar, 99.99%) and NaCl

(10 mg, Sigma-Aldrich, 99.5%) was loaded at the center of reaction zone. The temperature of reaction zone gradually increased to 830 °C in 22 min, and cooled down to room temperature after staying at 830 °C for 15 min. Pure Ar and H₂ (90/10 sccm) were used as carrying gas.

Fabrication of 2D pixel matrix. CVD WSe₂ was transferred onto BN flake by a wet transfer method⁴². Firstly, the as-grown WSe₂ on Si substrate coated with 300 nm SiO₂ was spin coated by polymethyl methacrylate (PMMA). The Si substrate was then left in 2 M KOH solution for several hours, yielding PMMA coated WSe₂ film. The WSe₂/PMMA film was washed in deionized water for three times before transferring onto exfoliated BN flake. EBL was used to pattern pixel matrix on the large area heterostructure followed by RIE to isolate each pixel. The electrodes were then patterned using standard EBL, thermal deposition, and lift-off.

Data availability. The data that supports the plots within this paper and other findings of this study are available from the corresponding authors upon reasonable request.

Received: 9 December 2017 Accepted: 19 June 2018

Published online: 27 July 2018

References

- Leydecker, T. et al. Flexible nonvolatile optical memory thin-film transistor device with over 256 distinct levels based on an organic bicomponent blend. *Nat. Nano* **11**, 769–775 (2016).
- Star, A., Lu, Y., Bradley, K. & Grüner, G. Nanotube optoelectronic memory devices. *Nano Lett.* **4**, 1587–1591 (2004).
- Sun, C. et al. Single-chip microprocessor that communicates directly using light. *Nature* **528**, 534–538 (2015).
- Xu, Q., Schmidt, B., Pradhan, S. & Lipson, M. Micrometre-scale silicon electro-optic modulator. *Nature* **435**, 325–327 (2005).
- Fossum, E. R. CMOS image sensors: Electronic camera-on-a-chip. *IEEE Trans. Electron Dev.* **44**, 1689–1698 (1997).
- Shacham, A., Bergman, K. & Carloni, L. P. Photonic networks-on-chip for future generations of chip multiprocessors. *IEEE Trans. Comput.* **57**, 1246–1260 (2008).
- Batten, C. et al. Building many-core processor-to-DRAM networks with monolithic CMOS silicon photonics. *IEEE Micro* **29**, 8–21 (2009).
- Venema, L. Silicon electronics and beyond. *Nature* **479**, 309–309 (2011).
- Schwierz, F. Graphene transistors. *Nat. Nano* **5**, 487–496 (2010).
- Neto, A. C., Guinea, F., Peres, N. M., Novoselov, K. S. & Geim, A. K. The electronic properties of graphene. *Rev. Mod. Phys.* **81**, 109–162 (2009).
- Wang, Q. H., Kalantar-Zadeh, K., Kis, A., Coleman, J. N. & Strano, M. S. Electronics and optoelectronics of two-dimensional transition metal dichalcogenides. *Nat. Nano* **7**, 699–712 (2012).
- Yoon, Y., Ganapathi, K. & Salahuddin, S. How good can monolayer MoS₂ transistors be? *Nano Lett.* **11**, 3768–3773 (2011).
- Kim, K. S. et al. Large-scale pattern growth of graphene films for stretchable transparent electrodes. *Nature* **457**, 706–710 (2009).

14. Georgiou, T. et al. Vertical field-effect transistor based on graphene-WS₂ heterostructures for flexible and transparent electronics. *Nat. Nano* **8**, 100–103 (2013).
15. Xia, F., Mueller, T., Lin, Y.-m., Valdes-Garcia, A. & Avouris, P. Ultrafast graphene photodetector. *Nat. Nano* **4**, 839–843 (2009).
16. Lopez-Sanchez, O., Lembke, D., Kayci, M., Radenovic, A. & Kis, A. Ultrasensitive photodetectors based on monolayer MoS₂. *Nat. Nano* **8**, 497–501 (2013).
17. Xiang, D. et al. Surface transfer doping induced effective modulation on ambipolar characteristics of few-layer black phosphorus. *Nat. Commun.* **6**, 6485–6493 (2015).
18. Baugher, B. W., Churchill, H. O., Yang, Y. & Jarillo-Herrero, P. Optoelectronic devices based on electrically tunable p–n diodes in a monolayer dichalcogenide. *Nat. Nano* **9**, 262–267 (2014).
19. Ross, J. S. et al. Electrically tunable excitonic light-emitting diodes based on monolayer WSe₂ pn junctions. *Nat. Nano* **9**, 268–272 (2014).
20. Lei, S. et al. Optoelectronic memory using two-dimensional materials. *Nano Lett.* **15**, 259–265 (2014).
21. Lee, J. et al. Monolayer optical memory cells based on artificial trap-mediated charge storage and release. *Nat. Commun.* **8**, 14734–14742 (2017).
22. Roy, K. et al. Graphene-MoS₂ hybrid structures for multifunctional photoresponsive memory devices. *Nat. Nano* **8**, 826–830 (2013).
23. Li, D. et al. Two-dimensional nonvolatile programmable p–n junctions. *Nat. Nano* **12**, 901–906 (2017).
24. Li, D., Chen, M., Zong, Q. & Zhang, Z. Floating-gate manipulated graphene-black phosphorus heterojunction for nonvolatile ambipolar schottky junction memories, memory inverter circuits, and logic rectifiers. *Nano. Lett.* **17**, 6353–6359 (2017).
25. Lee, D. et al. Multibit MoS₂ photoelectronic memory with ultrahigh sensitivity. *Adv. Mater.* **28**, 9196–9202 (2016).
26. Goossens, S. et al. Broadband image sensor array based on graphene-CMOS integration. *Nat. Photon.* **11**, 366–371 (2017).
27. Park, H. et al. Filter-free image sensor pixels comprising silicon nanowires with selective color absorption. *Nano Lett.* **14**, 1804–1809 (2014).
28. Jansen van Vuuren, R. D., Armin, A., Pandey, A. K., Burn, P. L. & Meredith, P. Organic photodiodes: the future of full color detection and image sensing. *Adv. Mater.* **28**, 4766–4802 (2016).
29. Burgos, S. P., Yokogawa, S. & Atwater, H. A. Color imaging via nearest neighbor hole coupling in plasmonic color filters integrated onto a complementary metal-oxide semiconductor image sensor. *ACS Nano* **7**, 10038–10047 (2013).
30. Yokogawa, S., Burgos, S. P. & Atwater, H. A. Plasmonic color filters for CMOS image sensor applications. *Nano Lett.* **12**, 4349–4354 (2012).
31. Lin, Q., Armin, A., Burn, P. L. & Meredith, P. Filterless narrowband visible photodetectors. *Nat. Photon.* **9**, 687–694 (2015).
32. Gao, L. et al. Flexible filter-free narrowband photodetector with high gain and customized responsive spectrum. *Adv. Funct. Mater.* **27**, 1702360–1702369 (2017).
33. Gao, L. et al. Broadband, sensitive and spectrally distinctive SnS₂ nanosheet/PbS colloidal quantum dot hybrid photodetector. *Light Sci. Appl.* **5**, e16126–e16134 (2016).
34. Fang, H. et al. High-performance single layered WSe₂ p-FETs with chemically doped contacts. *Nano Lett.* **12**, 3788–3792 (2012).
35. Ju, L. et al. Photoinduced doping in heterostructures of graphene and boron nitride. *Nat. Nano* **9**, 348–352 (2014).
36. Taniguchi, T. & Watanabe, K. Synthesis of high-purity boron nitride single crystals under high pressure by using Ba–BN solvent. *J. Cryst. Growth* **303**, 525–529 (2007).
37. Jaffrenou, P. et al. Origin of the excitonic recombinations in hexagonal boron nitride by spatially resolved cathodoluminescence spectroscopy. *J. Appl. Phys.* **102**, 116102–116105 (2007).
38. Li, L. et al. Black phosphorus field-effect transistors. *Nat. Nano* **9**, 372–377 (2014).
39. Xia, F., Wang, H. & Jia, Y. Rediscovering black phosphorus as an anisotropic layered material for optoelectronics and electronics. *Nat. Commun.* **5**, 4458–4464 (2014).
40. Castellanos-Gomez, A. et al. Deterministic transfer of two-dimensional materials by all-dry viscoelastic stamping. *2D Mater.* **1**, 011002–011010 (2014).
41. Li, S. et al. Halide-assisted atmospheric pressure growth of large WSe₂ and WS₂ monolayer crystals. *Appl. Mater. Today* **1**, 60–66 (2015).
42. Li, X. et al. Large area synthesis of high-quality and uniform graphene films on copper foils. *Science* **324**, 1312–1314 (2009).

Acknowledgments

Authors acknowledge the financial support from NSFC Grant (21573156), Natural Science Foundation of Jiangsu Province BK20170005, National Science Fund for Distinguished Young Scholars of China (No. 61525404), Singapore MOE Grant R143-000-652-112, the Medium-sized Center program funded by Singapore National Research Foundation, Prime Minister's Office, and the technical support from Center for Advanced 2D Materials for the device fabrication.

Author contributions

D.X. and T.L. contributed equally to this paper. D.X., T.L., and W.C. conceived and designed the project. D.X., T.L., and T.J.Y. fabricated the single memory device. D.X. and T.L. performed the material characterizations and device measurements. T.L. and D.X. synthesized the large area CVD WSe₂ and fabricated the pixel matrix. J.X. and L.L. carried out the theoretical calculations. W.C. supervised the project. D.X., T.L., and W.C. cowrote the main manuscript text. D.X. and T.L. prepared Figs. 1–5. D.X. and T.L. prepared Supplementary Figs. 1–18 and Supplementary Notes 1–5. All authors reviewed the manuscript.


Additional information

Supplementary Information accompanies this paper at <https://doi.org/10.1038/s41467-018-05397-w>.

Competing interests: The authors declare no competing interests.

Reprints and permission information is available online at <http://npg.nature.com/reprintsandpermissions/>

Publisher's note: Springer Nature remains neutral with regard to jurisdictional claims in published maps and institutional affiliations.

 **Open Access** This article is licensed under a Creative Commons Attribution 4.0 International License, which permits use, sharing, adaptation, distribution and reproduction in any medium or format, as long as you give appropriate credit to the original author(s) and the source, provide a link to the Creative Commons license, and indicate if changes were made. The images or other third party material in this article are included in the article's Creative Commons license, unless indicated otherwise in a credit line to the material. If material is not included in the article's Creative Commons license and your intended use is not permitted by statutory regulation or exceeds the permitted use, you will need to obtain permission directly from the copyright holder. To view a copy of this license, visit <http://creativecommons.org/licenses/by/4.0/>.

© The Author(s) 2018