

Differential serotonin transport is linked to the *rh5-HTTLPR* in peripheral blood cells

YS Singh^{1,2,10}, SC Altieri^{2,3,10}, TL Gilman^{2,3}, HM Michael⁴, ID Tomlinson⁵, SJ Rosenthal^{5,6}, GM Swain⁷, MA Murphey-Corb⁴, RE Ferrell⁸ and AM Andrews^{2,3,9}

The human serotonin transporter (*SERT*) gene possesses a 43-base pair (bp) insertion-deletion promoter polymorphism, the *h5-HTTLPR*. Genotype at this locus correlates with variation in anxiety-related personality traits and risk for major depressive disorder in many studies. Yet, the complex effects of the *h5-HTTLPR*, in combination with closely associated single-nucleotide polymorphisms (SNPs), continue to be debated. Moreover, although *SERT* is of high clinical significance, transporter function *in vivo* remains difficult to assess. Rhesus express a promoter polymorphism related to the *h5-HTTLPR*. The *rh5-HTTLPR* has been linked to differences in stress-related behavior and cognitive flexibility, although allelic variations in serotonin uptake have not been investigated. We studied the serotonin system as it relates to the *5-HTTLPR* in rhesus peripheral blood cells. Sequencing of the *rh5-HTTLPR* revealed a 23-bp insertion, which is somewhat longer than originally reported. Consistent with previous reports, no SNPs in the *rh5-HTTLPR* and surrounding genomic regions were detected in the individuals studied. Reductions in serotonin uptake rates, cell surface *SERT* binding, and 5-hydroxyindoleacetic acid/serotonin ratios, but not *SERT* mRNA levels, were associated with the *rh5-HTTLPR* short allele. Thus, serotonin uptake rates are differentiable with respect to the *5-HTTLPR* in an easily accessible native peripheral tissue. In light of these findings, we foresee that primary blood cells, in combination with high sensitivity functional measurements enabled by chronoamperometry, will be important for investigating alterations in serotonin uptake associated with genetic variability and antidepressant responsiveness in humans.

Translational Psychiatry (2012) 2, e77; doi:10.1038/tp.2012.2; published online 7 February 2012

Introduction

A number of polymorphisms in human genes coding for key proteins that regulate serotonin (5-HT) neurotransmission have been discovered. Among these are functional polymorphisms in the transcriptional control and noncoding regions of the serotonin transporter gene (*SERT*; *SLC6A4*).^{1–4} A 43-base pair (bp) insertion/deletion polymorphism in the promoter region of the human *SERT* gene, termed the 5-HT transporter-linked polymorphic region (*h5-HTTLPR*; Figure 1), has received considerable attention owing to its purported relationship with anxiety-related personality traits,^{5–7} stress-associated depression,^{8,9} amygdala activation in response to negative stimuli,^{10,11} and suicide.¹²

The *h5-HTTLPR* is thought to influence behavioral characteristics by driving allele-specific *SERT* promoter activity giving rise to two-fold variability in mRNA levels.^{1,13} Decreases in *SERT* protein binding in *postmortem* human brain and [³H]5-HT uptake in human platelets and

immortalized lymphoblasts have been reported to be associated with the *h5-HTTLPR* short 'S' allele.^{1,14,15} However, studies on human *SERT*-binding potential by positron emission tomography (PET)^{16–18} and mRNA levels in *postmortem* raphe tissue¹⁹ are not in agreement with earlier findings. Additional common noncoding polymorphisms thought to influence *SERT* transcription including an intron 2 VNTR, and rs25531 and rs25532 single-nucleotide polymorphisms (SNPs) in the *h5-HTTLPR* region, have been discovered, adding to the complexity of assessing variability associated with the human *SERT* gene.^{2,4,20} Nonetheless, although the timing²¹ and specific molecular effects of the *h5-HTTLPR* on *SERT* expression and transporter function in the human brain are unresolved, parallels continue to be drawn between this polymorphism and anxiety-related traits and susceptibility to depression.^{22–27}

Similar to humans, macaques express a *SERT*-linked polymorphic region (*rh5-HTTLPR*; Figure 1).^{28–30} The

¹Department of Chemistry, Pennsylvania State University, University Park, PA, USA; ²Department of Psychiatry, Semel Institute for Neuroscience & Human Behavior, and Hatos Center for Neuropharmacology, David Geffen School of Medicine, and California NanoSystems Institute, University of California, Los Angeles, CA, USA; ³Huck Institutes of the Life Sciences, Pennsylvania State University, University Park, PA, USA; ⁴Department of Microbiology and Molecular Genetics, University of Pittsburgh School of Medicine, Pittsburgh, PA, USA; ⁵Department of Chemistry, Vanderbilt University, Nashville, TN, USA; ⁶Departments of Physics, Chemical & Biomolecular Engineering, and Pharmacology, Vanderbilt University, Nashville, TN, USA; ⁷Department of Chemistry, Michigan State University, East Lansing, MI, USA; ⁸Department of Human Genetics, University of Pittsburgh School of Medicine, Pittsburgh, PA, USA and ⁹Department of Veterinary and Biomedical Sciences, Pennsylvania State University, University Park, PA, USA

Correspondence: Dr AM Andrews, Department of Psychiatry, Semel Institute for Neuroscience & Human Behavior, and Hatos Center for Neuropharmacology, David Geffen School of Medicine, and California NanoSystems Institute, University of California, Neuroscience Research Building, Room 507.635 Charles E. Young Dr S, Box 957332, Los Angeles, CA 90095-7332, USA.

E-mail: aandrews@mednet.ucla.edu

¹⁰These authors contributed equally to this work.

Keywords: anxiety; biomarker; chronoamperometry; depression; lymphocytes; *SERT*

Received 20 September 2011; revised 10 November 2011; accepted 6 December 2011

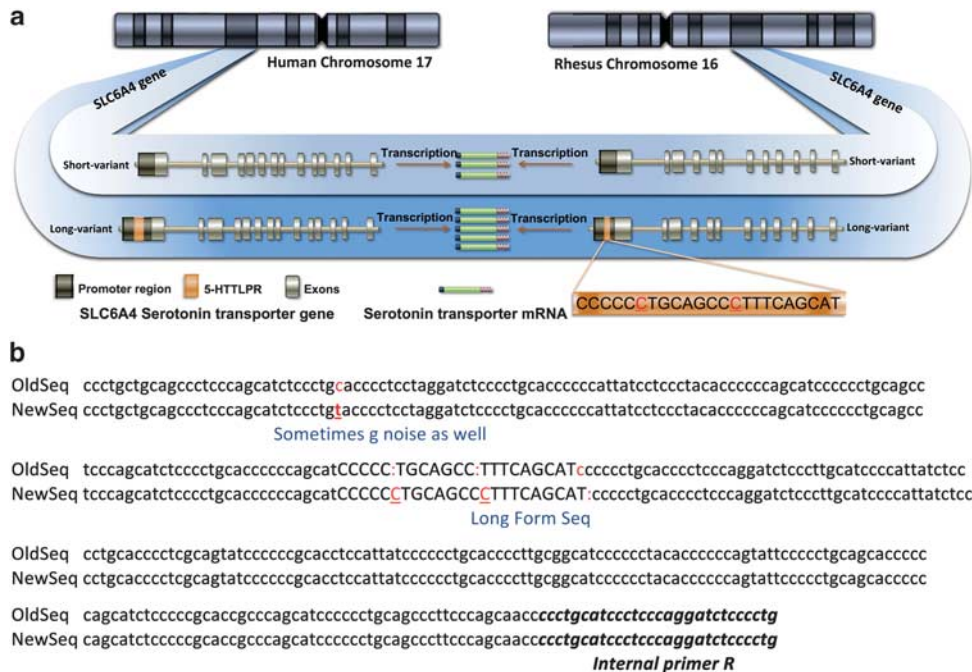


Figure 1 Structure and sequence of the rhesus *5-HTTLPR*. (a) The serotonin transporter (*SERT*) gene in rhesus monkeys has been reported to contain a 21-bp insertion-deletion polymorphism in the promoter region termed the *rh5-HTTLPR*. A 43-bp polymorphism, the *h5-HTTLPR*, occurs in the human *SERT* gene. In humans, the presence of the *5-HTTLPR* short 'S' allele has been associated with decreased gene transcription and thus, reductions in *SERT* protein levels and uptake function. We investigated whether the *rh5-HTTLPR* 'S' allele is associated with decreased serotonin system parameters in PBCs, which natively express *SERT*. (b) Sequencing of the *rh5-HTTLPR* in the 15 animals studied revealed an insertion/deletion region consisting of 23 bp, as well as two additional sequence discrepancies (shown in red) compared with the originally published sequence.²⁸

rh5-HTTLPR was originally reported to consist of a 21-bp insertion/deletion involving repeat element 7 at a slightly shifted locus from that in humans.²⁸ In contrast to humans, no SNPs associated with the *rh5-HTTLPR* have been discovered.³⁰ Yet similar to humans, stress responsiveness, social behavior, and cognitive performance are influenced by *rh5-HTTLPR* genotype. For example, behavioral and hormonal responses to early life stress and sensitivity to alcohol are potentiated in macaques bearing a short 'S' allele.^{29,31–33} Moreover, rhesus with an 'S' allele showed greater anxiety and fearful behavior³⁴ and enhanced aversion to social threats.³⁵ Also similar to humans, rhesus short allele carriers perform better on a number of cognitive tasks supporting the idea that the short *5-HTTLPR* allele might be associated with evolutionary advantage.^{36–38} *SERT* immunoreactive fibers have been mapped to the central nucleus of the amygdala³⁹ and oxytocin-expressing neurons in the paraventricular nucleus⁴⁰ in rhesus suggesting that differences in *SERT* expression and uptake function modulate fear responses and social affiliation, respectively.

The *rh5-HTTLPR* is hypothesized to influence *SERT* gene transcription; the short allele has been associated with decreased reporter gene expression.²⁹ However, studies on *SERT* mRNA levels in blood cells⁴¹ or *SERT*-binding potential using PET^{37,42} have failed to find associations with respect to *rh5-HTTLPR* genotype. Otherwise, direct investigations into the effects of the *rh5-HTTLPR* on *SERT* function have been lacking. We recently reported on differences in uptake at a single concentration of serotonin in peripheral blood cells

(PBCs) in association with the *rh5-HTTLPR*.⁴³ Uptake rates for serotonin were reduced in macaques carrying one or two 'S' alleles compared with individuals homozygous for the long allele. In the present study, we investigated native blood cells as biomarkers for a wide range of serotonin system characteristics. We assessed the expression and function of *SERTs* in rhesus PBCs by analyzing mRNA levels, surface *SERT* binding (K_D and B_{max}), transporter kinetics (K_M and V_{max}), and cellular concentrations of serotonin and 5-hydroxyindoleacetic acid (5-HIAA) with respect to *rh5-HTTLPR* genotype. Investigating rhesus PBCs confers a number of key advantages. (1) Rhesus monkeys are closely related to humans in that they show a genetically similar but less complex form of the *5-HTTLPR*. (2) Macaques are animal models whereby *in vivo* measurements in the brain are possible to assess alterations in *SERT* function and extracellular serotonin levels directly.^{44,45} (3) Parallels can be drawn between *SERT* function in the brain vs PBCs in rhesus with relevance to diagnosing and treating psychiatric disorders in humans.

Materials and methods

Animals. Venous blood was collected under anesthesia from a group of mixed sex rhesus (*M. mulatta*) 6.9 ± 0.1 years of age. Whole blood was used for DNA isolation by established protocols. Animals were genotyped for the *rh5-HTTLPR* using previously described methods.²⁸

Genotypes were also determined for tryptophan hydroxylase-2 SNPs and a monoamine oxidase-A repeat length polymorphism³⁰ and are reported in the Supplementary Information (Supplementary Table S1). We had the opportunity to genotype a relatively large cohort of animals and thereby, were able to identify and to include a substantial number of individuals with the *S/S* genotype. However, animals were donated for the present study and constraints on the size of this donation dictated that only a subset of the genotyped cohort could be studied here. Thus, animals were selected to maximize *rh5-HTTLPR* genotype distributions, particularly *S/S* and *L/L* genotypes, and to control for sex and genotypes at the other loci where possible. Information on the final cohort appears in the Supplementary Information (Supplementary Table S1). The genotype distribution for the study cohort was $N=6$ for *L/L*, $N=3$ for *S/L*, and $N=6$ for *S/S*. Animals from China vs the United States (LABS of Virginia, Yemassee, SC, USA) are noted in Supplementary Table S1 and are distributed across genotypes. Animals were housed at the University of Pittsburgh in pairs, with the exception of large males who were housed singly. Individual blood samples (~40 ml) were collected and PBCs were isolated from genotyped subjects. Experiments for protocol development were conducted using pooled mixed genotype rhesus PBCs. All work involving animals was carried out in accordance with National Institutes of Health guidelines and was approved by the University of Pittsburgh School of Medicine Institutional Animal Care and Use Committee.

Cell survival and SERT function. Confocal microscopy and flow cytometry were carried out using IDT307 (4-(4-(dimethylamino) phenyl)-1-methylpyridinium iodide), a monoamine transporter substrate similar to ASP⁺ (4-(4-diethylaminostyryl)-*N*-methylpyridinium iodide).^{46,47} Following uptake, IDT307 fluoresces enabling transporter function in PBCs to be determined optically.

Serotonin uptake. PBCs (~10 million cell per ml) were thawed by adding assay buffer (12–15 ml) at room temperature. A small volume (200 μ l) of cells in solution was used for live cell counts using Trypan blue exclusion. Cells were centrifuged at 340 g for 7 min. Pellets containing PBCs were resuspended by gently vortexing in assay buffer to produce final concentrations of 2–4 million cells per ml. Chronoamperometry was carried out, as described previously,⁴³ using boron-doped diamond microelectrodes⁴⁸ to measure serotonin-uptake rates on a second-by-second basis over a range of serotonin concentrations to determine maximal uptake rates (V_{\max}) and affinity constants (K_M). We have shown that the use of chronoamperometry enables biologically important differences in uptake rates to be distinguished, which cannot otherwise be differentiated by radiochemical methods.⁴⁹

Cell surface SERT binding. SERT binding was performed using the cocaine analog (¹²⁵I)RTI-55 by previously published methods with minor modifications.^{50,51} As samples from genotyped animals were limited, we focused on determining surface SERT binding (as opposed to total

SERT) due to its greater relevance to serotonin uptake and antidepressant action. Cells (~10 million cells per ml) were thawed and centrifuged as described above. Pellets containing intact cells were divided to measure specific and nonspecific binding over a range of RTI-55 concentrations to determine maximal binding (B_{\max}) and dissociation constants (K_D).

SERT mRNA levels. Total RNA was isolated from PBCs (~8–9 million cells per sample) using isoamyl/chloroform phase separation and isopropanol precipitation. Real-time quantitative PCR (RT-qPCR) and TaqMan probes and primers specific to *SERT* and two control genes, *ACTB* (β -actin) and *GAPDH* (glyceraldehyde 3-phosphate dehydrogenase), were used for amplifications. Sequences and efficiencies of the primer/probe sets are reported in Supplementary Table S2.

Neurotransmitter levels. Blood cell concentrations of 5-HT and its major metabolite, 5-HIAA, were determined using previously published procedures⁵² by high-performance liquid chromatography with electrochemical detection.

Statistics. All values are expressed as means \pm standard errors (s.e.m.s) with differences of $P < 0.05$ considered statistically significant. Significant differences are denoted in the figures as * $P < 0.05$, ** $P < 0.01$, and *** $P < 0.001$.

Additional information on electrochemical uptake, (¹²⁵I)RTI-55 binding, mRNA isolation, RT-qPCR, neurochemical analysis, chemicals, and statistics appears in the Supplementary Information.

Results

The *rh5-HTTLPR* comprises a 23-bp polymorphism. The genomic region 130-bps upstream and 227-bps downstream of the *rh5-HTTLPR* was sequenced for each of the 15 animals studied. Sequences were identical for all individuals (Figure 1b). A number of differences were noted compared with the original sequence published by Lesch *et al.*²⁸ One C/T discrepancy was identified upstream of the *rh-5HTTLPR* polymorphic region. Within the insertion region itself, two additional cytosines were detected suggesting that the *rh5-HTTLPR* consists of 23 bps, instead of 21 bps as originally reported. Additionally, the 3' region immediately flanking the *rh5-HTTLPR* contained one less cytosine than previously reported. Most discrepancies were associated with strings of cytosines, where sequencing errors commonly occur. However, we cannot rule out genetic heterogeneity in this region as possibly accounting for discrepancies with previously reported sequences.

Previously frozen PBCs are viable and transport serotonin. The effects of frozen storage on the quality of PBCs were assessed using flow cytometry and confocal imaging. Propidium iodide was used to identify dead cells. We found that ~75% of cells were alive after thawing and significant changes in cell viability did not occur when cells were

maintained at 4 °C for up to 4 h (Supplementary Figure S1). Studies using flow cytometry in conjunction with IDT307, a fluorescent monoamine transporter substrate,^{46,47} illustrated that PBCs retain transporter function after isolation, freezing and thawing (Supplementary Figure S2). Confocal imaging showed localization of IDT307 inside the majority of live cells (Figure 2), also indicating intact transporter function.

Using chronoamperometry to make highly time-resolved measurements, we previously demonstrated that serotonin uptake by rhesus PBCs is Na⁺-dependent.⁴³ Additionally, uptake is abolished after preincubation with the serotonin-selective reuptake inhibitor paroxetine. Here, we investigated the effects of oxygen on serotonin clearance rates in rhesus PBCs. Similar to synaptosomes,^{49,53} we observed a 40% increase in serotonin uptake in the presence of oxygenated assay buffer (Supplementary Figure S3). Changes in serotonin uptake rates were not observed after blocking norepinephrine transporters, dopamine transporters or organic cation type 3 transporters⁵⁴ (Supplementary Figure S3). These results, in combination with prior findings, suggest that extracellular serotonin clearance by rhesus PBCs is a SERT-mediated active uptake process.

Reduced serotonin uptake and surface SERT binding are associated with the *rh5-HTTLPR* short allele. Recently, we reported that PBCs isolated from individuals expressing the *rh5-HTTLPR* 'S' allele showed reduced uptake of 0.5 μM serotonin.⁴³ Here, we used chronoamperometry to investigate uptake over a range of serotonin concentrations to determine maximal uptake rates (V_{max}) and affinity constants (K_M). The 'S' allele of the *rh5-HTTLPR* was associated with significant decreases in maximal serotonin uptake rates (Figure 3a) but not the affinity of SERT for serotonin (Supplementary Table S3). Maximal uptake rates were 7.1 ± 0.4 , 5.1 ± 0.2 , and 4.9 ± 0.6 pmol per million cells per min and affinity constants were 0.45 ± 0.06 , 0.39 ± 0.05 , and 0.45 ± 0.1 μM for L/L, S/L, and S/S genotypes, respectively.

Binding of RTI-55 was used to investigate SERT protein localized at the plasma membrane in undisrupted cells. Surface SERT binding showed a trend toward a decrease in maximal binding in 'S' allele carriers (Figure 3b; $P < 0.12$). No differences in dissociation constants were detected (Supplementary Table S3). Maximal surface SERT binding was 3.5 ± 0.4 , 2.4 ± 0.4 , and 2.6 ± 0.4 fmol per million cells and dissociation constants were 0.27 ± 0.04 , 0.29 ± 0.08 , and 0.26 ± 0.07 nM in L/L, S/L, and S/S genotypes, respectively.

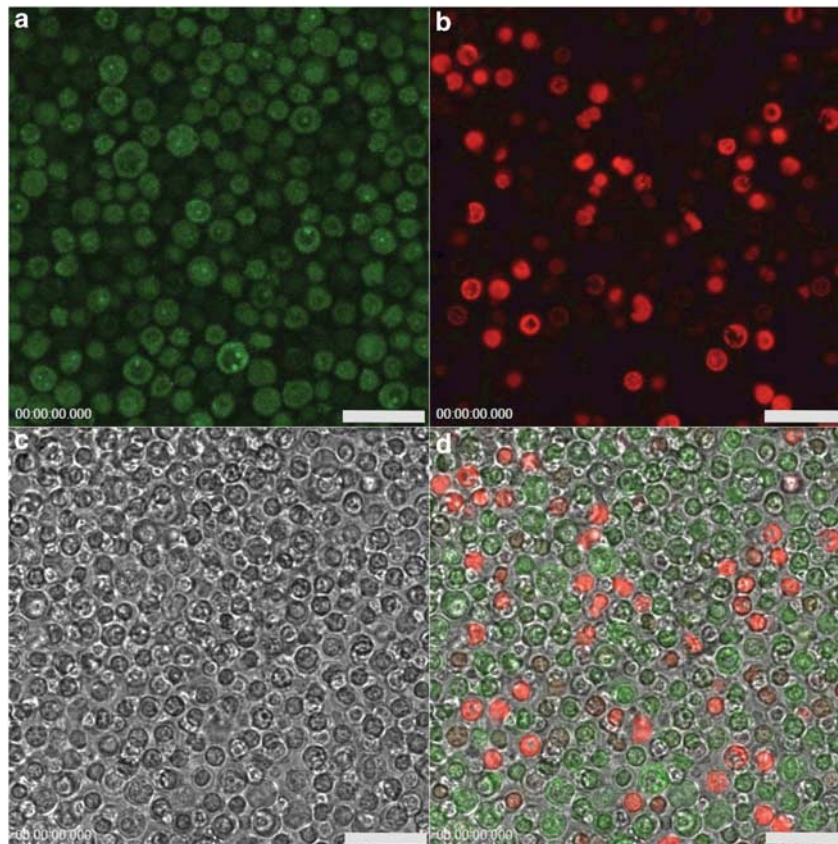


Figure 2 Confocal images of rhesus PBCs. Cells were incubated with (a) 1 μM IDT307 (30 min) and (b) propidium iodide (5 min). Propidium iodide (excitation 536 nm, emission 617 nm) stains dead cells, whereas IDT307 (excitation 485 nm, emission 520 nm), a substrate for SERTs, fluoresces after being taken up into live cells. (c) A differential interference contrast image shows all cells. (d) There is no overlap between cells predominantly labeled with IDT307 (green) vs propidium iodide-labeled cells (red) in the overlay of all three images demonstrating functional SERTs in living cells. Scale bars are 25 μm.

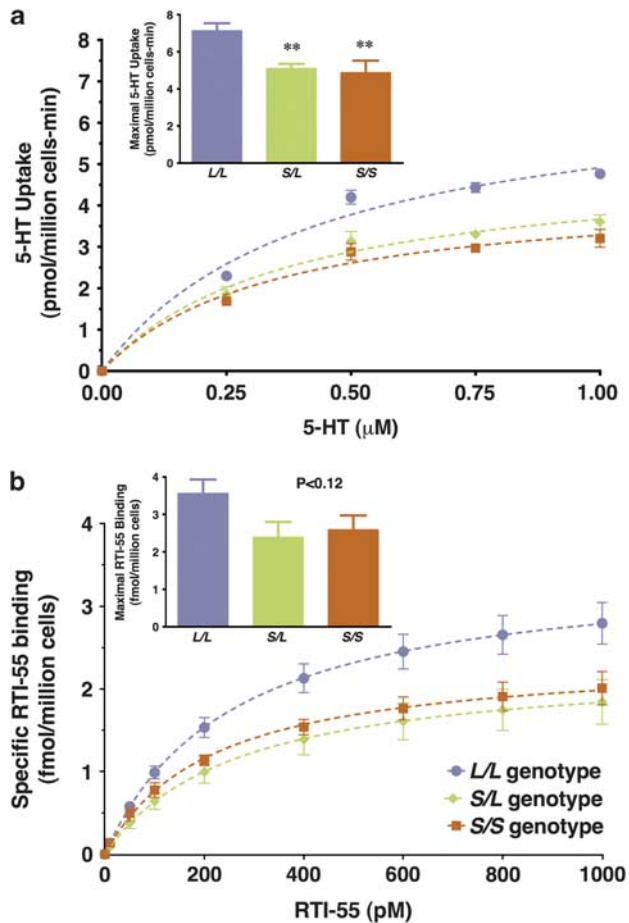


Figure 3 Serotonin uptake rates and surface SERT binding in rhesus PBCs. (a) Maximal uptake rates were calculated using nonlinear curve fitting for data from individual animals. Mean maximal uptake rates with respect to genotype are shown in the inset. One-way analysis of variance indicated that maximal uptake rates vary with respect to *rh5-HTTLPR* genotype ($F(2,12)=5.9$; $P<0.05$). *A priori* comparisons of uptake rates using one-tailed Student's *t*-tests showed significant decreases associated with the 'S' allele ($t=3.4$, $df=7$, $P<0.01$ L/L vs S/L and $t=3.0$, $df=10$, $P<0.01$ L/L vs S/S). (b) Binding of (125 I)RTI-55 to intact PBCs was used to determine the levels of SERT located at the plasma membrane. Maximal binding was calculated for data from individual animals by nonlinear curve fitting using one-site saturation isotherms. Mean maximal binding as a function of genotype is shown in the inset. There was a trend toward decreased SERT binding associated with the 'S' allele ($F(2,12)=2.5$; $P<0.12$). Data are means \pm s.e.m.s with $N=6$ for L/L, $N=3$ for S/L, and $N=6$ for S/S. ** $P<0.01$ vs the L/L genotype.

In addition to analyzing these data with respect to individual genotypes, we combined data for the S/L and S/S groups. Merging data from short allele carriers has been carried out previously due to a purported 'dominant' effect of the short allele and/or with smaller group sizes.^{1,37,55} Significant differences between animals homozygous for the *rh5-HTTLPR* 'L' allele and animals expressing one or two copies of the 'S' allele were present for serotonin uptake rates and cell surface SERT binding (Figures 4a and b). No significant differences in affinity constants for uptake (K_M) or binding (K_D) were found when the S/L and S/S genotypes were merged. Together, both modes of analysis suggest that reductions in serotonin uptake rates in rhesus PBCs from 'S' allele carriers are associated with decreases in surface SERT availability but not the affinity of SERT for serotonin or RTI-55.

SERT mRNA levels do not differ with respect to *rh5-HTTLPR* genotype. The *h5-HTTLPR* is hypothesized to influence SERT mRNA levels whereby the presence of the 'S' allele is associated with reduced transcriptional efficiency.^{1,56} We investigated whether the *rh5-HTTLPR* confers effects associated with differential transcription. In contrast to surface SERT binding and function, we did not find differences in SERT mRNA levels in rhesus PBCs with respect to *rh5-HTTLPR* genotype (Supplementary Figure S4A) or when the S/L and S/S genotypes were merged (Figure 4c).

Ratios of 5-HIAA/5-HT are decreased in association with the rhesus 'S' allele. We measured serotonin and 5-HIAA concentrations in PBCs to investigate alterations associated with the *rh5-HTTLPR*. We found that 5-HT levels were not different with respect to genotype (Supplementary Figure S4B). However, we observed a significant decrease in 5-HIAA levels in association with genotypes having one or two copies of the 'S' allele (Supplementary Figure S4C). Significant decreases in 5-HIAA to 5-HT ratios were observed for S/S vs L/L groups (Supplementary Figure S4D) and when the S/L and S/S genotypes were combined (Figure 4f).

Discussion

The human *5-HTTLPR* is postulated to drive allele-specific *SERT* promoter activity leading to differences in mRNA and protein levels, and functional serotonin uptake (Figure 1).¹ Here, we investigated each of these aspects of SERT expression and function, in addition to serotonin and 5-HIAA concentrations, to elucidate the effects of the *rh5-HTTLPR* in native (untransformed) PBCs. We find that the short allele of the *rh5-HTTLPR* is associated with reduced surface SERT binding, which is correlated on an individual basis with serotonin uptake rates (Figure 5a). By contrast, differences in mRNA levels with respect to genotype were not detected; nor was there a correlation between individual SERT mRNA levels and surface SERT protein binding (Figure 5b).

Lesch and co-workers reported lower promoter activity associated with the *h5-HTTLPR* short variant.⁵⁶ Decreases in SERT mRNA, SERT binding, and serotonin uptake have also been associated with the *5-HTTLPR* short allele in human lymphoblastoid (transformed) cell lines.¹ Subsequent studies of serotonin uptake in human platelets support these findings^{15,57,58} with one exception.⁵⁹ By contrast, binding studies in platelets measuring total SERT protein report variable results with respect to the *h5-HTTLPR*.^{15,58–60} *Postmortem* brain tissue and *in vivo* brain-imaging studies are similarly associated with conflicting results.^{14,16,18,61–64} Contradictory findings in human studies are attributable to a number of factors such as small samples sizes, subject genetic variability, the influence of environmental/developmental factors, and the use of insufficiently sensitive analytical methods.^{38,43,49,65}

Notably, the interpretation of the results of investigations into the human *SERT* gene are complicated by additional common noncoding *SERT* gene polymorphisms thought to influence transcription. These and other factors make direct

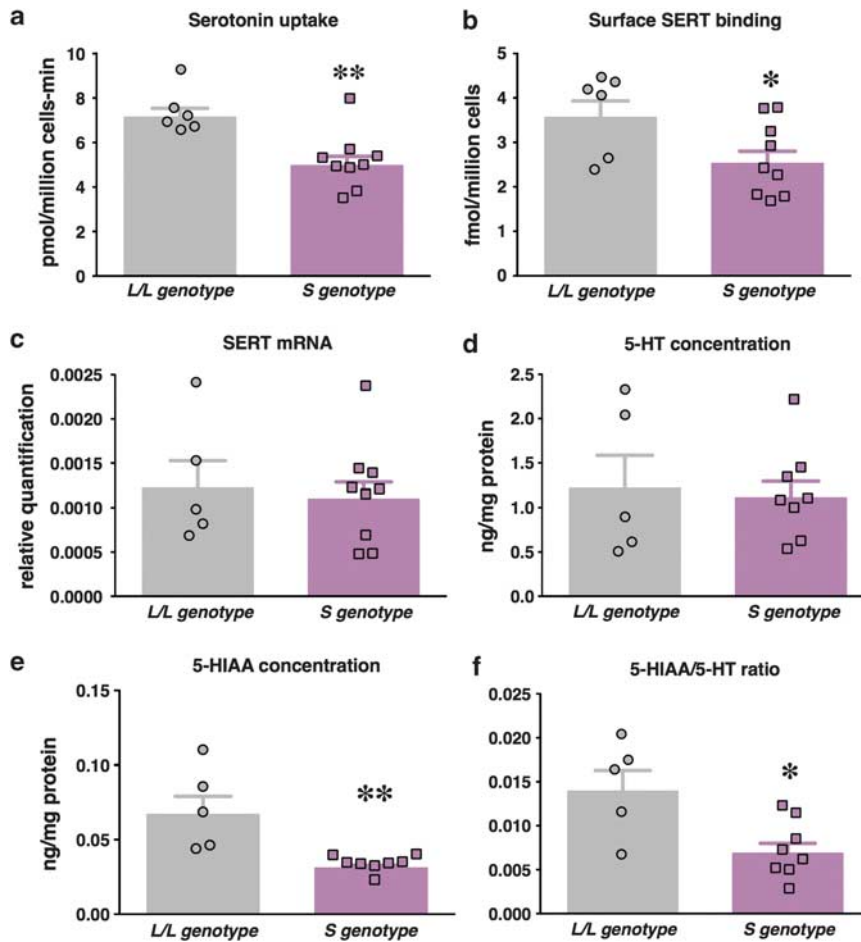


Figure 4 Serotonin system characteristics associated with the *rh5-HTTLPR* short allele in PBCs. Experimental data from *S/L* and *S/S* genotypes were merged and means \pm s.e.m.s are shown for (a) maximal serotonin uptake, (b) maximal surface SERT binding, (c) SERT mRNA levels, (d) 5-HT concentrations, (e) 5-HIAA concentrations and (f) 5-HIAA to 5-HT ratios. Data for animals having one or two 'S' alleles (*S/L* and *S/S*) were compared with data from animals with the *L/L* genotype using one-tailed *t* tests ($t=3.6$, $df=13$, $P<0.01$ for maximal serotonin uptake, $t=2.3$, $df=13$, $P<0.05$ for maximal SERT binding) or two-tailed *t* tests ($t=3.7$, $df=11$, $P<0.01$ for 5-HIAA concentrations, and $t=3.0$, $df=11$, $P<0.05$ for 5-HIAA/5-HT ratios). Individual values for each animal are shown as scatter plots overlaid on the respective bar graphs. Data are means \pm s.e.m.s with $N=5-6$ for *L/L* and $N=8-9$ for 'S' genotypes. ** $P<0.01$ and * $P<0.05$ vs the *L/L* genotype.

correlations between the *h5-HTTLPR* and changes in serotonin system expression and function challenging (see Singh *et al.*⁴³ for further discussion). Recent controversies have arisen regarding the role of the *h5-HTTLPR*, particularly with regard to stress-associated depression.^{24,25,66-69} The results of the current study present a comprehensive assessment of the cellular phenotype of the short vs long alleles providing solid evidence for a functional effect of the *rh5-HTTLPR*. One of the major advantages of the nonhuman primate model studied here is that unlike in human studies, subjects' environments can be highly regulated and manipulated over various periods in the lifespan.^{29,32,33,70,71} Furthermore, data can be collected from subjects whose genetic relatedness is knowable and controllable. Neither early life environment nor the pedigrees of the animals in the present study were highly homogeneous; animals from China and the United States were represented across genotypes. Nonetheless, *rh5-HTTLPR* short allele carriers were characterized by reduced serotonin uptake rates, cell surface SERT binding, and intracellular 5-HIAA levels in PBCs.

In the present study, SERT mRNA levels measured by RT-qPCR in rhesus PBCs were not significantly different with respect to *rh5-HTTLPR* genotype. This finding is consistent with a previous report on SERT mRNA in PBCs from a large cohort of rhesus (~80 animals).⁴¹ *Postmortem* human brain studies highlight the variability in SERT mRNA levels such that within the same genotype, 10-fold differences in SERT mRNA are observed.¹⁴ Similarly, in human lymphoblasts, SERT mRNA levels vary by 5-10-fold even when controlling for triallelic genotype with only 8% of the variance arising from measurement contributions.³ Variability in SERT mRNA could be due to a number of factors unrelated to *5-HTTLPR* genotype that influence mRNA synthesis, stability and degradation. Most studies in native tissues or cells from humans or rhesus fail to find associations between SERT mRNA and *5-HTTLPR* genotype, suggesting that mRNA levels are a poor indicator of variability associated with the *5-HTTLPR*.

The *h5-HTTLPR* has not yet been precisely modeled in rodents, although there are similarities with SERT-deficient mice and rats, whereby the low-functioning *h5-HTTLPR* allele is hypothesized to confer similar reductions in SERT expres-

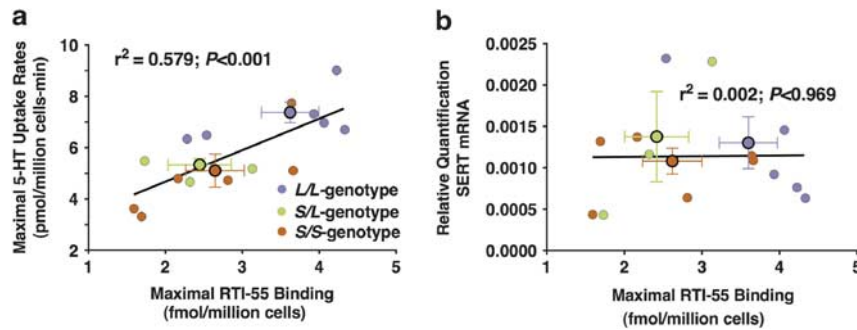


Figure 5 Correlations between surface SERT binding vs serotonin uptake or SERT mRNA levels. Correlations are shown with respect to individual animals between (a) SERT function and surface SERT binding and (b) SERT mRNA levels and surface SERT binding. Mean values with respect to genotype are shown as larger symbols with s.e.m.s for each variable indicated. Only SERT function and surface SERT binding are correlated, such that 60% of the variance is shared with a low probability of chance correlation ($P < 0.001$).

sion and function to those occurring with constitutive loss of one functional *SERT* allele in rodents.^{53,65,72–74} Mice with constitutive reductions in *SERT* gene expression show elevated anxiety-related behavior,⁷⁵ enhanced stress reactivity,^{76–78} and in some background strains, increased depressive-like behavior.⁷⁹ Increased anxiety-like behavior⁸⁰ and amygdala over-activity⁸¹ are associated with constitutive reductions of *SERT* in rats.

In mice, life-long absence of *SERT* is associated with decreased brain tissue serotonin concentrations.^{50,82,83} However, mice with a 50% constitutive loss of *SERT* expression show little to no change in brain tissue serotonin. Here, rhesus PBCs showed no significant differences in serotonin levels. Yet, 5-HIAA was reduced in PBCs from rhesus ‘S’ allele carriers. In light of decreased serotonin uptake in rhesus PBCs associated with the ‘S’ allele, these data suggest that a feedback mechanism might be at work to conserve available serotonin. Antidepressant administration in rhesus has been associated with decreased 5-HIAA concentrations in cerebrospinal fluid.⁸⁴ Investigation of serotonin synthesis and degradation rates with respect to the *rh5-HTTLPR* will be required to elucidate the underlying nature of the differences in 5-HIAA levels in rhesus PBCs.

Altered stress and anxiety responses exhibited by *SERT*-deficient mice resemble phenotypic characteristics of humans and macaques associated with the short form of the *5-HTTLPR*. Studies in rodents show that disruption of *SERT* function during a key postnatal period results in changes in emotional behaviors in adulthood that share some similarities with constitutive reductions in *SERT* expression.^{85,86} Developmentally sensitive changes in anxiety-related behavior in rodents, in combination with negative findings in association studies on the *5-HTTLPR* in adult humans, have led to the idea that the effects of the *h5-HTTLPR* on serotonin transmission predominate during key developmental periods.²¹ Here, we show that changes in the serotonin system associated with the *rh5-HTTLPR* are present during adulthood, alternately suggesting that this gene variant influences *SERT* function and serotonin neurochemistry throughout life, at least in the periphery. Moreover, gene \times environment interactions between *rh5-HTTLPR* genotype and peer vs mother rearing, with respect to CSF 5-HIAA levels further implicate central effects of the *5-HTTLPR* beyond early development.²⁹

The present findings suggest that PBCs might be used to study genetic and pharmacologic alterations in serotonin transmission directly and more accessibly than measurements in the central nervous system. PBCs are obtained using minimally invasive methods and can be viably frozen for later study. Additionally, PBCs are native cells; they do not suffer from potential problems associated with altered gene expression associated with immortalization, for example, in lymphoblasts.⁸⁷ Investigating *SERT* in the brain *in vivo* in humans is currently only possible via PET imaging. However, a lack of association between *SERT* binding by PET and *5-HTTLPR* genotype is reported in humans^{16–18,63} (discussed in greater detail in Singh *et al.*⁴³), as well as in rhesus.^{37,42} Before using PBCs as biomarkers of alterations in the brain serotonin system, additional research clarifying the relationship between the brain and peripheral blood serotonin systems is needed. For instance, there might be important differences between PBCs and the central nervous system in terms of regulatory mechanisms affecting *SERT* function. Also, PBCs constitute a mixed population of cells consisting of a number of different cell types expressing *SERT*, that is, mononuclear cells including monocytes and lymphocytes, and small numbers of platelets. Determining the contributions of each of these kinds of cells to uptake rates measured in PBC preparations is the subject of ongoing studies. In any case, the findings of the present study were the same regardless of whether the data were expressed and analyzed with respect to numbers of lymphocytes or total protein levels, the latter of which reflect all relevant cell types (Supplementary Table S3).

Native peripheral cells hold promise as candidates to elucidate central nervous system function at the molecular and genetic levels and with respect to drug mechanisms and efficacy. Furthermore, developing clinically applicable methods to perform functional measurements in PBCs that are sensitive to genetic influence represents a step toward an approach whereby cells readily accessible from human blood samples might be used to predict drug responses, thus initiating the concept of individually tailored therapeutic interventions.

Conflict of interest

SJ Rosenthal and ID Tomlinson declare financial interests in commercial products involving IDT307. All other authors declare no conflict of interest.

Acknowledgements. We acknowledge the Cytometry Facility at the Huck Institutes of the Life Sciences, Pennsylvania State University and the Global Bio Lab and GenoSeq Core Facility at the University of California, Los Angeles. We also acknowledge Drs Beatriz Campo-Fernandez and Etienne Sibille for assistance with RT-qPCR experiments and data analysis, respectively, Mr Brendan Beikmann for assistance with confocal microscopy, Drs Erica Unger and Laura Bianco for assistance with the binding assay, and Drs Andrew Leuchter, David Jentsch, and Paul Weiss for critical feedback on the manuscript. This project was supported by funding from the National Institutes of Health (MH064756 to AMA and EB003778 to SJR). The content is solely the responsibility of the authors and does not necessarily represent the official views of the National Institutes of Health.

- Lesch KP, Bengel D, Heils A, Sabol SZ, Greenberg BD, Petri S *et al*. Association of anxiety-related traits with a polymorphism in the serotonin transporter gene regulatory region. *Science* 1996; **274**: 1527–1531.
- Wendland JR, Martin BJ, Kruse MR, Lesch KP, Murphy DL. Simultaneous genotyping of four functional loci of human SLC6A4, with a reappraisal of 5-HTTLPR and rs25531. *Mol Psychiatry* 2006; **11**: 224–226.
- Hu XZ, Lipsky RH, Zhu G, Akhtar LA, Taubman J, Greenberg BD *et al*. Serotonin transporter promoter gain-of-function genotypes are linked to obsessive-compulsive disorder. *Am J Hum Genet* 2006; **78**: 815–826.
- Wendland JR, Moya PR, Kruse MR, Ren-Patterson RF, Jensen CL, Timpano KR *et al*. A novel, putative gain-of-function haplotype at SLC6A4 associates with obsessive-compulsive disorder. *Hum Mol Genet* 2008; **17**: 717–723.
- Sen S, Burmeister M, Ghosh D. Meta-analysis of the association between a serotonin transporter promoter polymorphism (5-HTTLPR) and anxiety-related personality traits. *Am J Med Genet B Neuropsychiatr Genet* 2004; **127B**: 85–89.
- Schinka JA, Busch RM, Robichaux-Keene N. A meta-analysis of the association between the serotonin transporter gene polymorphism (5-HTTLPR) and trait anxiety. *Mol Psychiatry* 2004; **9**: 197–202.
- Savitz JB, Ramesar RS. Genetic variants implicated in personality: a review of the more promising candidates. *Am J Med Genet B Neuropsychiatr Genet* 2004; **131B**: 20–32.
- Caspi A, Sugden K, Moffitt TE, Taylor A, Craig IW, Harrington H *et al*. Influence of life stress on depression: moderation by a polymorphism in the 5-HTT gene. *Science* 2003; **301**: 386–389.
- Kendler KS, Kuhn JW, Vittum J, Prescott CA, Riley B. The interaction of stressful life events and a serotonin transporter polymorphism in the prediction of episodes of major depression: a replication. *Arch Gen Psychiatry* 2005; **62**: 529–535.
- Canli T, Omura K, Haas BW, Fallgatter A, Constable RT, Lesch KP. Beyond affect: a role for genetic variation of the serotonin transporter in neural activation during a cognitive attention task. *Proc Natl Acad Sci USA* 2005; **102**: 12224–12229.
- von dem Hagen EA, Passamonti L, Nuttall S, Sambrook J, Calder AJ. The serotonin transporter gene polymorphism and the effect of baseline on amygdala response to emotional faces. *Neuropsychologia* 2011; **49**: 674–680.
- Anguelova M, Benkelfat C, Turecki G. A systematic review of association studies investigating genes coding for serotonin receptors and the serotonin transporter: I. Affective disorders. *Mol Psychiatry* 2003; **8**: 574–591.
- Murphy DL, Lesch KP. Targeting the murine serotonin transporter: insights into human neurobiology. *Nat Rev Neurosci* 2008; **9**: 85–96.
- Little KY, McLaughlin DP, Zhang L, Livermore CS, Dalack GW, McFinton PR *et al*. Cocaine, ethanol, and genotype effects on human midbrain serotonin transporter binding sites and mRNA levels. *Am J Psychiatry* 1998; **155**: 207–213.
- Greenberg BD, Tolliver TJ, Huang SJ, Li Q, Bengel D, Murphy DL. Genetic variation in the serotonin transporter promoter region affects serotonin uptake in human blood platelets. *Am J Med Genet* 1999; **88**: 83–87.
- Murthy NV, Selvaraj S, Cowen PJ, Bhagwagar Z, Riedel WJ, Peers P *et al*. Serotonin transporter polymorphisms (SLC6A4 insertion/deletion and rs25531) do not affect the availability of 5-HTT to [11C] DASB binding in the living human brain. *NeuroImage* 2010; **52**: 50–54.
- Parsey RV, Hastings RS, Oquendo MA, Hu X, Goldman D, Huang YY *et al*. Effect of a triallelic functional polymorphism of the serotonin-transporter-linked promoter region on expression of serotonin transporter in the human brain. *Am J Psychiatry* 2006; **163**: 48–51.
- Shioe K, Ichimiya T, Suhara T, Takano A, Sudo Y, Yasuno F *et al*. No association between genotype of the promoter region of serotonin transporter gene and serotonin transporter binding in human brain measured by PET. *Synapse* 2003; **48**: 184–188.
- Lim JE, Papp A, Pinsonneault J, Sadee W, Saffen D. Allelic expression of serotonin transporter (SERT) mRNA in human pons: lack of correlation with the polymorphism SERTLPR. *Mol Psychiatry* 2006; **11**: 649–662.
- Nakamura M, Ueno S, Sano A, Tanabe H. The human serotonin transporter gene linked polymorphism (5-HTTLPR) shows ten novel allelic variants. *Mol Psychiatry* 2000; **5**: 32–38.
- Sibille E, Lewis DA. SERT-ainly involved in depression, but when? *Am J Psychiatry* 2006; **163**: 8–11.
- Neumeister A, Hu XZ, Luckenbaugh DA, Schwarz M, Nugent AC, Bonne O *et al*. Differential effects of 5-HTTLPR genotypes on the behavioral and neural responses to tryptophan depletion in patients with major depression and controls. *Arch Gen Psychiatry* 2006; **63**: 978–986.
- Zalsman G, Huang YY, Oquendo MA, Burke AK, Hu XZ, Brent DA *et al*. Association of a triallelic serotonin transporter gene promoter region (5-HTTLPR) polymorphism with stressful life events and severity of depression. *Am J Psychiatry* 2006; **163**: 1588–1593.
- Wankerl M, Wust S, Otte C. Current developments and controversies: Does the serotonin transporter gene-linked polymorphic region (5-HTTLPR) modulate the association between stress and depression? *Curr Opin Psychiatry* 2010; **23**: 582–587.
- Caspi A, Hariri AR, Holmes A, Uher R, Moffitt TE. Genetic sensitivity to the environment: the case of the serotonin transporter gene and its implications for studying complex diseases and traits. *Am J Psychiatry* 2010; **167**: 509–527.
- Kiyohara C, Yoshimasu K. Association between major depressive disorder and a functional polymorphism of the 5-hydroxytryptamine (serotonin) transporter gene: a meta-analysis. *Psychiatr Genet* 2010; **20**: 49–58.
- Clarke H, Flint J, Attwood AS, Munafo MR. Association of the 5-HTTLPR genotype and unipolar depression: a meta-analysis. *Psychol Med* 2010; **40**: 1767–1778.
- Lesch KP, Meyer J, Glatz K, Flugge G, Hinney A, Hebebrand J *et al*. The 5-HT transporter gene-linked polymorphic region (5-HTTLPR) in evolutionary perspective: alternative allelic variation in rhesus monkeys. Rapid communication. *J Neural Transm* 1997; **104**: 1259–1266.
- Bennett AJ, Lesch KP, Heils A, Long JC, Lorenz JG, Shoaf SE *et al*. Early experience and serotonin transporter gene variation interact to influence primate CNS function. *Mol Psychiatry* 2002; **7**: 118–122.
- Wendland JR, Lesch KP, Newman TK, Timme A, Gachot-Neveu H, Thierry B *et al*. Differential functional variability of serotonin transporter and monoamine oxidase genes in macaque species displaying contrasting levels of aggression-related behavior. *Behav Genet* 2006; **36**: 163–172.
- Champoux M, Bennett A, Shannon C, Higley JD, Lesch KP, Suomi SJ. Serotonin transporter gene polymorphism, differential early rearing, and behavior in rhesus monkey neonates. *Mol Psychiatry* 2002; **7**: 1058–1063.
- Barr CS, Newman TK, Becker ML, Champoux M, Lesch KP, Suomi SJ *et al*. Serotonin transporter gene variation is associated with alcohol sensitivity in rhesus macaques exposed to early-life stress. *Alcohol Clin Exp Res* 2003; **27**: 812–817.
- Barr CS, Newman TK, Lindell S, Shannon C, Champoux M, Lesch KP *et al*. Interaction between serotonin transporter gene variation and rearing condition in alcohol preference and consumption in female primates. *Arch Gen Psychiatry* 2004; **61**: 1146–1152.
- Bethea CL, Streicher JM, Coleman K, Pau FK, Moessner R, Cameron JL. Anxious behavior and fenfluramine-induced prolactin secretion in young rhesus macaques with different alleles of the serotonin reuptake transporter polymorphism (5HTTLPR). *Behav Genet* 2004; **34**: 295–307.
- Watson KK, Ghodasra JH, Platt ML. Serotonin transporter genotype modulates social reward and punishment in rhesus macaques. *PLoS One* 2009; **4**: e4156.
- Belsky J, Jonassaint C, Pluess M, Stanton M, Brummert B, Williams R. Vulnerability genes or plasticity genes? *Mol Psychiatry* 2009; **14**: 746–754.
- Jedema HP, Gianaros PJ, Greer PJ, Kerr DD, Liu S, Higley JD *et al*. Cognitive impact of genetic variation of the serotonin transporter in primates is associated with differences in brain morphology rather than serotonin neurotransmission. *Mol Psychiatry* 2010; **15**: 512–522, 446.
- Homberg JR, Lesch KP. Looking on the bright side of serotonin transporter gene variation. *Biol Psychiatry* 2011; **69**: 513–519.
- O'Rourke H, Fudge JL. Distribution of serotonin transporter labeled fibers in amygdaloid subregions: implications for mood disorders. *Biol Psychiatry* 2006; **60**: 479–490.
- Emiliano AB, Cruz T, Pannoni V, Fudge JL. The interface of oxytocin-labeled cells and serotonin transporter-containing fibers in the primate hypothalamus: a substrate for SSRIs therapeutic effects? *Neuropsychopharmacology* 2007; **32**: 977–988.
- Yu K, Qiu CL, Yang GB, Zong CM, Xing H, Shao Y *et al*. Alteration of serotonin transporter messenger RNA level in the peripheral blood mononuclear cells from simian/human immunodeficiency virus infected Chinese rhesus macaques (Macaca mulatta). *Brain Behav Immun* 2010; **24**: 298–305.
- Heinz A, Higley JD, Gorey JG, Saunders RC, Jones DW, Hommer D *et al*. In vivo association between alcohol intoxication, aggression, and serotonin transporter availability in nonhuman primates. *Am J Psychiatry* 1998; **155**: 1023–1028.
- Singh YS, Sawarynski LE, Michael HM, Ferrell RE, Murphey-Corb MA, Swain GM *et al*. Boron-doped diamond microelectrodes reveal reduced serotonin uptake rates in lymphocytes from adult rhesus monkeys carrying the short allele of the 5-HTTLPR. *ACS Chem Neurosci* 2010; **1**: 49–64.
- Bradberry CW, Rubino SR. Phasic alterations in dopamine and serotonin release in striatum and prefrontal cortex in response to cocaine predictive cues in behaving rhesus macaques. *Neuropsychopharmacology* 2004; **29**: 676–685.
- Centeno ML, Reddy AP, Smith LJ, Sanchez RL, Henderson JA, Salli NC *et al*. Serotonin in microdialysate from the mediobasal hypothalamus increases after progesterone administration to estrogen primed macaques. *Eur J Pharmacol* 2007; **555**: 67–75.
- Mason JN, Farmer H, Tomlinson ID, Schwartz JW, Savchenko V, DeFelice LJ *et al*. Novel fluorescence-based approaches for the study of biogenic amine transporter localization, activity, and regulation. *J Neurosci Methods* 2005; **143**: 3–25.
- Tomlinson ID, Iwamoto H, Blakely RD, Rosenthal SJ. Biotin tethered homotryptamine derivatives: high affinity probes of the human serotonin transporter (hSERT). *Bioorg Med Chem Lett* 2011; **21**: 1678–1682.

48. Park J, Quaiserova-Mocko V, Patel BA, Novotny M, Liu A, Bian X *et al*. Diamond microelectrodes for *in vitro* electroanalytical measurements: current status and remaining challenges. *Analyst* 2008; **133**: 17–24.
49. Perez XA, Bianco LE, Andrews AM. Filtration disrupts synaptosomes during radiochemical analysis of serotonin uptake: comparison with chronoamperometry in SERT knockout mice. *J Neurosci Methods* 2006; **154**: 245–255.
50. Bengel D, Murphy DL, Andrews AM, Wichems CH, Feltner D, Heils A *et al*. Altered brain serotonin homeostasis and locomotor insensitivity to 3, 4-methylenedioxymethamphetamine ("Ecstasy") in serotonin transporter-deficient mice. *Mol Pharmacol* 1998; **53**: 649–655.
51. Andrews AM, Ladenheim B, Epstein CJ, Cadet JL, Murphy DL. Transgenic mice with high levels of superoxide dismutase activity are protected from the neurotoxic effects of 2'-NH₂-MPTP on serotonergic and noradrenergic nerve terminals. *Mol Pharmacol* 1996; **50**: 1511–1519.
52. Luellen BA, Miller DB, Chisnell AC, Murphy DL, O'Callaghan JP, Andrews AM. Neuronal and astroglial responses to the serotonin and norepinephrine neurotoxin: 1-methyl-4-(2'-aminophenyl)-1,2,3,6-tetrahydropyridine. *J Pharmacol Exp Ther* 2003; **307**: 923–931.
53. Perez XA, Andrews AM. Chronoamperometry to determine differential reductions in uptake in brain synaptosomes from serotonin transporter knockout mice. *Anal Chem* 2005; **77**: 818–826.
54. Baganz NL, Horton RE, Calderon AS, Owens WA, Munn JL, Watts LT *et al*. Organic cation transporter 3: keeping the brake on extracellular serotonin in serotonin-transporter-deficient mice. *Proc Natl Acad Sci USA* 2008; **105**: 18976–18981.
55. Kalin NH, Shelton SE, Fox AS, Rogers J, Oakes TR, Davidson RJ. The serotonin transporter genotype is associated with intermediate brain phenotypes that depend on the context of eliciting stressor. *Mol Psychiatry* 2008; **13**: 1021–1027.
56. Heils A, Teufel A, Petri S, Stober G, Riederer P, Bengel D *et al*. Allelic variation of human serotonin transporter gene expression. *J Neurochem* 1996; **66**: 2621–2624.
57. Nobile M, Begni B, Giorda R, Frigerio A, Marino C, Molteni M *et al*. Effects of serotonin transporter promoter genotype on platelet serotonin transporter functionality in depressed children and adolescents. *J Am Acad Child Adolesc Psychiatry* 1999; **38**: 1396–1402.
58. Anderson GM, Gutknecht L, Cohen DJ, Brailly-Tabard S, Cohen JH, Ferrari P *et al*. Serotonin transporter promoter variants in autism: functional effects and relationship to platelet hyperserotonemia. *Mol Psychiatry* 2002; **7**: 831–836.
59. Kaiser R, Muller-Oerlinghausen B, Filler D, Tremblay PB, Berghofer A, Roots I *et al*. Correlation between serotonin uptake in human blood platelets with the 44-bp polymorphism and the 17-bp variable number of tandem repeat of the serotonin transporter. *Am J Med Genet* 2002; **114**: 323–328.
60. Patkar AA, Berrettini WH, Mannelli P, Gopalakrishnan R, Hoehe MR, Bilal L *et al*. Relationship between serotonin transporter gene polymorphisms and platelet serotonin transporter sites among African-American cocaine-dependent individuals and healthy volunteers. *Psychiatr Genet* 2004; **14**: 25–32.
61. Willeit M, Stastny J, Pirker W, Praschak-Rieder N, Neumeister A, Asenbaum S *et al*. No evidence for *in vivo* regulation of midbrain serotonin transporter availability by serotonin transporter promoter gene polymorphism. *Biol Psychiatry* 2001; **50**: 8–12.
62. Naylor L, Dean B, Pereira A, Mackinnon A, Kouzmenko A, Copolov D. No association between the serotonin transporter-linked promoter region polymorphism and either schizophrenia or density of the serotonin transporter in human hippocampus. *Mol Med* 1998; **4**: 671–674.
63. Heinz A, Jones DW, Mazzanti C, Goldman D, Ragan P, Hommer D *et al*. A relationship between serotonin transporter genotype and *in vivo* protein expression and alcohol neurotoxicity. *Biol Psychiatry* 2000; **47**: 643–649.
64. van Dyck CH, Malison RT, Staley JK, Jacobsen LK, Seibyl JP, Laruelle M *et al*. Central serotonin transporter availability measured with [¹²³I]beta-CIT SPECT in relation to serotonin transporter genotype. *Am J Psychiatry* 2004; **161**: 525–531.
65. Murphy DL, Fox MA, Timpano KR, Moya PR, Ren-Patterson R, Andrews AM *et al*. How the serotonin story is being rewritten by new gene-based discoveries principally related to SLC6A4, the serotonin transporter gene, which functions to influence all cellular serotonin systems. *Neuropharmacology* 2008; **55**: 932–960.
66. Munafò MR, Durrant C, Lewis G, Flint J. Gene X environment interactions at the serotonin transporter locus. *Biol Psychiatry* 2009; **65**: 211–219.
67. Risch N, Herrell R, Lehner T, Liang KY, Eaves L, Hoh J *et al*. Interaction between the serotonin transporter gene (5-HTTLPR), stressful life events, and risk of depression: a meta-analysis. *JAMA* 2009; **301**: 2462–2471.
68. Rutter M, Thapar A, Pickles A. Gene-environment interactions: biologically valid pathway or artifact? *Arch Gen Psychiatry* 2009; **66**: 1287–1289.
69. Uher R, McGuffin P. The moderation by the serotonin transporter gene of environmental adversity in the etiology of depression: 2009 update. *Mol Psychiatry* 2009; **15**: 18–22.
70. Barr CS, Newman TK, Shannon C, Parker C, Dvoskin RL, Becker ML *et al*. Rearing condition and *rh5-HTTLPR* interact to influence limbic-hypothalamic-pituitary-adrenal axis response to stress in infant macaques. *Biol Psychiatry* 2004; **55**: 733–738.
71. Schwandt ML, Lindell SG, Sjöberg RL, Chisholm KL, Higley JD, Suomi SJ *et al*. Gene-environment interactions and response to social intrusion in male and female rhesus macaques. *Biol Psychiatry* 2010; **67**: 323–330.
72. Montanez S, Daws LC, Gould GG, Frazer A. Serotonin (5-HT) transporter (SERT) function after graded destruction of serotonergic neurons. *J Neurochem* 2003; **87**: 861–867.
73. Mathews TA, Fedele DE, Coppelli FM, Avila AM, Murphy DL, Andrews AM. Gene dose-dependent alterations in extraneuronal serotonin but not dopamine in mice with reduced serotonin transporter expression. *J Neurosci Methods* 2004; **140**: 169–181.
74. Homberg JR, Olivier JD, Smits BM, Mul JD, Mudde J, Verheul M *et al*. Characterization of the serotonin transporter knockout rat: a selective change in the functioning of the serotonergic system. *Neuroscience* 2007; **146**: 1662–1676.
75. Holmes A, Lit Q, Murphy DL, Gold E, Crawley JN. Abnormal anxiety-related behavior in serotonin transporter null mutant mice: the influence of genetic background. *Genes Brain Behav* 2003; **2**: 365–380.
76. Li Q, Wichems C, Heils A, Van De Kar LD, Lesch KP, Murphy DL. Reduction of 5-hydroxytryptamine (5-HT)(1A)-mediated temperature and neuroendocrine responses and 5-HT(1A) binding sites in 5-HT transporter knockout mice. *J Pharmacol Exp Ther* 1999; **291**: 999–1007.
77. Tjurmina OA, Armando I, Saavedra JM, Goldstein DS, Murphy DL. Exaggerated adrenomedullary response to immobilization in mice with targeted disruption of the serotonin transporter gene. *Endocrinology* 2002; **143**: 4520–4526.
78. Bartolomucci A, Carola V, Pascucci T, Puglisi-Allegra S, Cabib S, Lesch KP *et al*. Increased vulnerability to psychosocial stress in heterozygous serotonin transporter knockout mice. *Dis Model Mech* 2010; **3**: 459–470.
79. Holmes A, Yang RJ, Murphy DL, Crawley JN. Evaluation of antidepressant-related behavioral responses in mice lacking the serotonin transporter. *Neuro-psychopharmacology* 2002; **27**: 914–923.
80. Olivier JD, Van Der Hart MG, Van Swelm RP, Dederen PJ, Homberg JR, Cremers T *et al*. A study in male and female 5-HT transporter knockout rats: an animal model for anxiety and depression disorders. *Neuroscience* 2008; **152**: 573–584.
81. Nonkes LJ, Tomson K, Maertin A, Dederen J, Maes JH, Homberg J. Orbitofrontal cortex and amygdalar over-activity is associated with an inability to use the value of expected outcomes to guide behaviour in serotonin transporter knockout rats. *Neurobiol Learn Mem* 2010; **94**: 65–72.
82. Numis AL, Unger EL, Sheridan DL, Chisnell AC, Andrews AM. The role of membrane and vesicular monoamine transporters in the neurotoxic and hypothermic effects of 1-methyl-4-(2'-aminophenyl)-1,2,3,6-tetrahydropyridine (2'-NH(2)-MPTP). *Mol Pharmacol* 2004; **66**: 718–727.
83. Kim DK, Tolliver TJ, Huang SJ, Martin BJ, Andrews AM, Wichems C *et al*. Altered serotonin synthesis, turnover and dynamic regulation in multiple brain regions of mice lacking the serotonin transporter. *Neuropharmacology* 2005; **49**: 798–810.
84. Anderson GM, Bennett AJ, Weld KP, Pushkas JG, Ocase DM, Higley JD. Serotonin in cisternal cerebrospinal fluid of rhesus monkeys: basal levels and effects of sertraline administration. *Psychopharmacology (Berl)* 2002; **161**: 95–99.
85. Ansorge MS, Morelli E, Gingrich JA. Inhibition of serotonin but not norepinephrine transport during development produces delayed, persistent perturbations of emotional behaviors in mice. *J Neurosci* 2008; **28**: 199–207.
86. Popa D, Lena C, Alexandre C, Adrien J. Lasting syndrome of depression produced by reduction in serotonin uptake during postnatal development: evidence from sleep, stress, and behavior. *J Neurosci* 2008; **28**: 3546–3554.
87. Plagnol V, Uz E, Wallace C, Stevens H, Clayton D, Ozcelik T *et al*. Extreme clonality in lymphoblastoid cell lines with implications for allele specific expression analyses. *PLoS One* 2008; **3**: e2966.



Translational Psychiatry is an open-access journal published by Nature Publishing Group. This work is licensed under the Creative Commons Attribution-NonCommercial-No Derivative Works 3.0 Unported License. To view a copy of this license, visit <http://creativecommons.org/licenses/by-nc-nd/3.0/>

Supplementary Information accompanies the paper on the Translational Psychiatry website (<http://www.nature.com/tp>)