


# Granzyme B is correlated with clinical outcome after PD-1 blockade in patients with stage IV non-small-cell lung cancer

Daan P. Hurkmans <sup>1,2</sup>, Edwin A. Basak,<sup>1</sup> Nina Schepers,<sup>1</sup> Esther Oomen-De Hoop,<sup>1</sup> Cor H. Van der Leest,<sup>3</sup> Samira El Bouazzaoui,<sup>4</sup> Sander Bins,<sup>1</sup> Stijn L. W. Koolen,<sup>1,5</sup> Stefan Sleijfer,<sup>1</sup> Astrid A. M. Van der Veldt,<sup>1,6</sup> Reno Debets,<sup>1</sup> Ron H. N. Van Schaik,<sup>4</sup> Joachim G. J. V. Aerts,<sup>2</sup> Ron H. J. Mathijssen<sup>1</sup>

**To cite:** Hurkmans DP, Basak EA, Schepers N, *et al.* Granzyme B is correlated with clinical outcome after PD-1 blockade in patients with stage IV non-small-cell lung cancer. *Journal for ImmunoTherapy of Cancer* 2020;**8**:e000586. doi:10.1136/jitc-2020-000586

► Additional material is published online only. To view please visit the journal online (<http://dx.doi.org/10.1136/jitc-2020-000586>).

Accepted 09 April 2020

## ABSTRACT

**Background** A minority of patients with advanced non-small-cell lung cancer (NSCLC) benefit from treatment with immune checkpoint inhibitors (ICIs). Ineffective effector function of activated T and NK cells may lead to reduced tumor cell death, even when these activated effector cells are released from their immune checkpoint brake. Hence, in this study we aimed to assess the association of baseline serum granzyme B, as well as germline variation of the *GZMB* gene, with clinical outcome to programmed cell death protein 1 (PD-1) blockade.

**Methods** A total of 347 patients with stage IV NSCLC who started nivolumab treatment between June 2013 and June 2017 were prospectively included. Baseline serum and whole blood was available, allowing for protein quantification and targeted DNA sequencing. Clinical outcome was based on best overall response (BOR) according to Response Evaluation Criteria in Solid Tumors, V.1.1, progression-free survival (PFS), and overall survival (OS).

**Results** Patients with low serum levels of granzyme B had worse PFS (HR: 1.96; 95% CI: 1.12 to 3.43;  $p=0.018$ ) and worse OS (HR: 2.08; 95% CI: 1.12 to 3.87;  $p=0.021$ ) than patients with high baseline serum levels. To validate the findings, germline variation of *GZMB* rs8192917 was assessed. Patients with homozygous and heterozygous variants of *GZMB* rs8192917 had worse BOR (OR: 1.60; 95% CI: 1.01 to 2.52;  $p=0.044$ ) and worse PFS (HR: 1.38; 95% CI: 1.02 to 1.87;  $p=0.036$ ) than wild types.

**Conclusions** A low baseline serum level of granzyme B and germline variation of *GZMB* was associated with worse clinical outcome in NSCLC, emphasizing the relevance and additional value of monitoring germline genetic variations which mirror cytotoxic functions of T cells in ICI therapy.

**Trail registration number** Dutch Trial Registry (NL6828).

## BACKGROUND

Immune checkpoint inhibitors (ICIs) target immune effector cells, predominantly T cells, which may lead to an effective immune response toward tumor cells.<sup>1,2</sup> Although ICIs have shown to significantly improve overall survival (OS) in advanced non-small-cell lung

cancer (NSCLC), only a minority of patients benefit from treatment, with an objective response in about one out of five patients.<sup>3,4</sup>

The molecular mechanisms underlying resistance to ICI therapy are only partly explained. It is postulated that a combination of factors contribute to response, involving tumor biology, tumor microenvironment, the peripheral immune system, as well as germline genetics.<sup>5,6</sup> programmed cell death protein 1 (PD-1)-mediated inhibition targets signaling downstream of the T cell receptor via its downstream phosphatase SHP-2, as well as costimulatory molecules.<sup>7,8</sup> Importantly, distorted effector function of activated T and NK cells may lead to reduced tumor cell death, even when these activated effector cells are released from their PD-1 brake.

Previously, it has been demonstrated that immunohistochemical staining and in vivo imaging, using positron emission tomography, of intratumoral granzyme B may serve as a predictive biomarker for PD-1 blockade in melanoma.<sup>9</sup> Granzyme B is a key serine protease that is secreted to induce apoptosis, primarily by activated T cells and NK cells.<sup>10</sup> Distortion of granzyme B activity could be linked to reduced entry, trafficking, and accumulation within the cytoplasm of target cells (eg, tumor cells), and/or linked to reduced enzymatic activity, and hence decreased cleavage of intracellular substrates, such as caspase-3.<sup>11–13</sup>

Taken together, we hypothesize that low baseline serum levels of granzyme B, and consequently alterations of the *GZMB* locus, may contribute to resistance mechanisms of PD-1 blockade. The primary objectives of the current analysis were to assess the association of baseline serum granzyme B levels with progression-free survival (PFS) and OS after



© Author(s) (or their employer(s)) 2020. Re-use permitted under CC BY-NC. No commercial re-use. See rights and permissions. Published by BMJ.

For numbered affiliations see end of article.

## Correspondence to

Dr Daan P. Hurkmans; [d.hurkmans@erasmusmc.nl](mailto:d.hurkmans@erasmusmc.nl)

PD-1 blockade in patients with NSCLC. As a validation, genetic variants of the *GZMB* gene were related with PFS, OS and best overall response (BOR). Secondary objectives were to assess the relationship between serum granzyme B as well as genetic variations of *GZMB* and cytotoxic immune cell populations in blood.

## METHODS

### Study design and data collection

Patients with advanced NSCLC who were treated with PD-1 ICIs between June 2013 and June 2017 at the Erasmus University MC (Rotterdam, The Netherlands) and the Amphia Hospital (Breda, The Netherlands) were prospectively included. Patients with NSCLC stage IV who had been treated with nivolumab monotherapy (3 mg/kg intravenous, once every 2 weeks) were included, and patients who were treated with a prior line of immunotherapy were excluded from the study. The study was approved by the independent ethics committee board (MEC 02-1002 and MEC 16-011) and all patients provided written informed consent. Whole blood and baseline serum were available for DNA analysis and protein quantification, respectively. All assays were performed blinded to study endpoints; patients were assigned to a subject number. Patient characteristics included demographic and clinical data. BOR was assessed according to the Response Evaluation Criteria in Solid Tumors V.1.1 (RECIST V.1.1).<sup>14</sup> A minimum duration of 90 days for stable disease (SD) was required. Confirmation of partial response (PR) or complete response (CR) was not required. After treatment initiation, radiological evaluation by CT was usually performed every 6 weeks. PFS was defined as the time from the first administration of nivolumab until progressive disease (PD), or death due to any cause, whichever occurred first. OS was defined as the time from the first administration of nivolumab until death due to any cause.

### Quantitative protein measurement and DNA analysis

Quantitative analysis of granzyme B in serum was performed by a magnetic bead-based assay, using a 1×96-well microplate and magnetic antigranzyme-B-coated beads (Human Magnetic Luminex Assay, R&D Systems Inc, Minneapolis, Minnesota, USA). *GZMB* c.128T>C (rs8192917) was selected primarily based on its presumed contribution to resistance mechanisms of ICIs.<sup>9</sup> A total of 12 single-nucleotide polymorphisms (SNPs) were selected in eight genes based on their contribution to T cell immunity and their correlation with overt T cell responses, such as the autoimmune diseases systemic lupus erythematosus and rheumatoid arthritis.<sup>15–25</sup> A summary of the correlation of selected SNPs with overt T cell responses is displayed in online supplementary table 1. SNPs with a minor allele frequency (MAF) of <5% were excluded from the analysis. Linkage disequilibrium was tested using the application LDmatrix of LDlink V.5 (<https://ldlink.nci.nih.gov/>). Distribution of genotypes was tested

for Hardy-Weinberg equilibrium (HWE) using the  $\chi^2$  test. Deviations from HWE may reflect genotyping errors, though, may also be a signal of disease association,<sup>26</sup> for example, mutation of tumor suppressor genes. DNA isolation and genotyping for *GZMB* rs8192917, *HLA-A* rs60131261, *IL10* rs3024493, *IL2RA* rs3024493, *IFNG* rs2430561/rs2069705/rs2069718, *PDCD1* rs2227981/rs10204525/rs2227982, *PTPN11* rs2301756 and *ZAP70* rs13420683 has been performed using TaqMan analysis as previously described.<sup>27</sup> Whole-blood specimens were used for extraction of DNA. Genotyping was performed using predesigned TaqMan allelic discrimination assays, consisting of two allele-specific minor groove-binding probes. PCRs were performed in a reaction volume containing DNA, primers, and the specific probes were labeled with fluorescent dye.

### Flow cytometry

Peripheral blood samples were analyzed using multiplex flow cytometry as previously described by Kunert *et al.*<sup>6</sup> In short, absolute cell counts of immune cell populations were determined on whole blood after lysis of red blood cells, and frequencies of particular subsets were determined in more detail on cryopreserved peripheral blood mononuclear cell samples that were stained with a mix of antibodies.

### Mutational burden and expression of PD-L1 in tumor tissue

Expression of programmed death-ligand 1 (PD-L1) and tumor mutational burden (TMB) have previously been determined in a subset of patients of cohort 1 (n=26; patients with stage IV NSCLC) using archival formalin-fixed, paraffin-embedded tissue samples.<sup>28</sup> Baseline expression of PD-L1 has been determined using antibody clone SP263 (Roche Diagnostics, Tucson, Arizona, USA), whereas TMB has been measured using the OncoPrint TML assay (ThermoFisher Scientific, Waltham, Massachusetts, USA).

### Statistical analysis

To study the relationship between baseline protein levels or SNPs and survival (PFS and OS), Cox regression analysis was used. Patient survival was visualized by the Kaplan-Meier approach. Patients were dichotomized for low or high granzyme B serum levels based on the median value of all patients. Dominant, recessive, and additive models<sup>29</sup> were used to test associations between SNPs and clinical outcomes including BOR, PFS, and OS. HRs and 95% CIs were calculated. For the association of SNPs with radiological response, BOR was used as an ordered categorical variable with three levels, namely CR/PR (pooled), SD, and PD, by means of ordinal logistic regression analysis. This method assumes that the relationship between each pair of outcome groups is the same. The proportional odds assumption was checked for all analyses. Univariate ordinal logistic regression was applied for both SNPs and patient factors, and OR and 95% CIs were calculated. Multivariable ordinal logistic analysis was performed

including both single SNPs and patient factors, with  $p < 0.1$  according to the univariate analyses. All analyses, with a significant relation ( $p < 0.05$ ) between SNP and clinical outcome, were internally validated by bootstrapping,<sup>30</sup> where 1000 bootstrap samples were generated (with replacement) and 95% CIs were calculated for either ORs or HRs. Furthermore, bias and bias-corrected 95% CIs were calculated. In general, a  $p$  value  $< 0.05$  was considered to be statistically significant. Analyses were performed using IBM SPSS Statistics V.24.0.0.1 (Chicago, Illinois, USA) and STATA V.15.1 (StataCorp LP, College Station, Texas, USA).

## RESULTS

### Patient characteristics

Baseline serum from a total of 78 (cohort 1) and DNA from a total of 322 patients with stage IV NSCLC (cohort 2) was available for analysis (table 1). There was a 16.5% subject overlap between the patient cohorts. All patients were treated with at least one dose of nivolumab at 3 mg/kg once every 2 weeks. Overall, median absolute starting dose was 222 mg (IQR 192–263 mg). The objective response rate was similar in cohort 1 and cohort 2, respectively 19.2% and 16.6%. A minority (7%) of all patients could not be evaluated for response by RECIST V.1.1 due to early death, loss to follow-up or incomplete or absent follow-up tumor assessments. In the univariate analysis of cohort 2, WHO performance status (0 vs  $\geq 1$ ) and sex (male vs female) were significantly associated with PFS (HR: 0.66; 95% CI: 0.46 to 0.95;  $p = 0.027$  and HR: 1.38; 95% CI: 1.06 to 1.80;  $p = 0.18$ , respectively) and OS (HR: 0.52; 95% CI: 0.34 to 0.77;  $p = 0.001$  and HR: 1.40; 95% CI: 1.05 to 1.86;  $p = 0.023$ , respectively). In the multivariable analysis, only WHO performance status and primary tumor type remained significant for their association with, respectively PFS or OS and BOR.

### Serum levels of granzyme B are associated with clinical outcome

Serum levels of granzyme B were determined in cohort 1 (online supplementary figure 1), having a median concentration of 1.27 pg/mL, which was used as the cut-off to dichotomize patients with low and high levels of serum granzyme B (as described in the Method section). Patients with low baseline serum levels of granzyme B had a significant worse PFS (HR: 1.96; 95% CI: 1.12 to 3.43;  $p = 0.018$ , figure 1A) than patients with high levels of baseline serum granzyme B. Likewise, low levels of granzyme B were significantly associated with worse OS (HR: 2.08; 95% CI: 1.12 to 3.87;  $p = 0.021$ , figure 1B) compared with high levels of granzyme B.

### Germline variation of *GZMB* is associated with clinical outcome

To validate the findings in a second cohort by a different approach,<sup>31</sup> genetic alterations of *GZMB* c.128T>C (rs8192917), together with a mechanism-of-action-based

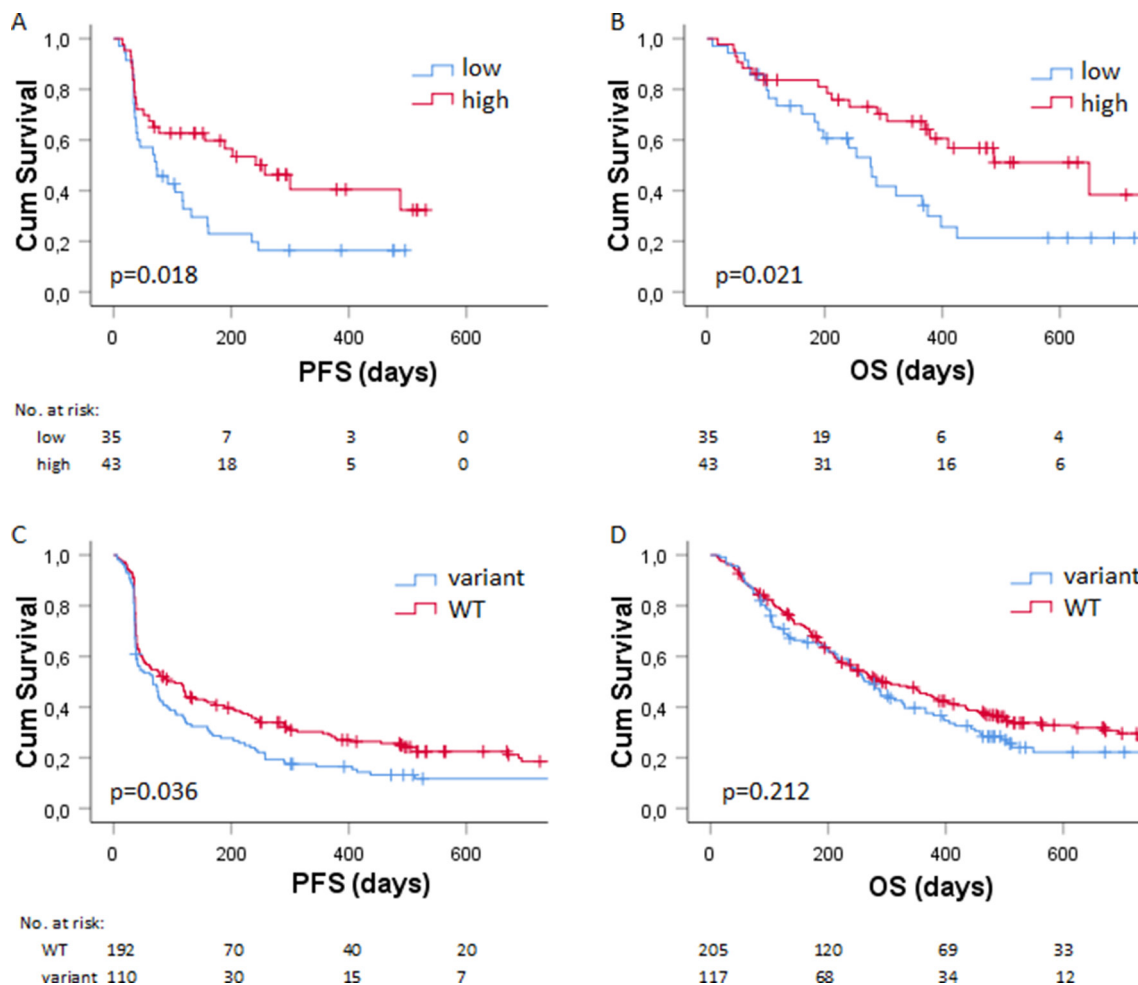
**Table 1** Patient characteristics

	Cohort 1 (n=78)		Cohort 2 (n=322)	
	n	%	n	%
<b>Age at start</b>				
Mean (range in years)	63.6 (35–78)		64.7 (29–85)	
<b>Sex</b>				
Male	48	61.5	202	62.7
Female	30	38.5	120	37.3
<b>Primary tumor</b>				
Adenocarcinoma	52	66.7	200	62.1
Squamous cell carcinoma	17	21.8	96	29.8
Large cell carcinoma	–	–	22	6.8
Lung cancer with unknown pathology	9	11.5	4	1.2
<b>WHO PS</b>				
0	18	23.1	54	16.8
1	39	50.0	188	58.4
2	1	1.3	7	2.2
3	–	–	1	0.3
Unknown	20	25.6	72	22.4
<b>Prior lines</b>				
0	2	2.6	1	0.3
1	60	76.9	217	67.4
2	13	16.7	82	25.5
3	2	2.6	15	4.7
4	1	1.3	6	1.9
5	–	–	1	0.3
<b>Smoking status</b>				
History or current smoker	56	71.8	238	73.9
Never smoker	8	10.3	20	6.2
Unknown	14	17.9	64	19.9
<b>Ethnicity</b>				
Caucasian	74	94.9	308	95
Other	4	5.1	5	2
Unknown	0	–	9	3

Baseline characteristics of NSCLC cohort 1 and cohort 2. 16.5% of the patients (n=53) from cohort 1 were overlapping with cohort 2.

NSCLC, non-small-cell lung cancer; WHO PS, WHO performance status.

panel of other SNPs, were related to PFS, OS and BOR in cohort 2. Investigated SNPs with the corresponding haplotype frequencies, MAF and HWE statistics are shown in online supplementary table 2. After correction for WHO performance status and sex in multivariable analysis, patients with homozygous and heterozygous variants of *GZMB* rs8192917 had worse PFS (HR: 1.38; 95% CI: 1.02 to 1.87;  $p = 0.036$ ; table 2, figure 1C). This



**Figure 1** Association of serum granzyme B and *GZMB* genotype with survival (A) Kaplan-Meier plots showing the (A) PFS (in days) and (B) OS (in days) of patients in cohort 2 ( $n=78$ ) with low (in blue) versus high (in red) baseline serum levels of granzyme B. The (C) PFS and (D) OS of patients in cohort 2 ( $n=322$ ) with wild type (in red) versus variant germline *GZMB* (in blue). Numbers at risk are shown below the graph. OS, overall survival; PFS, progression-free survival.

finding could be internally validated (HR 95% CI: 1.02 to 1.87; bias: 0.003; bias-corrected 95% CI: 1.03 to 1.88;  $p=0.036$ ; online supplementary table 3). Remaining SNPs were not associated with PFS after correction for patient factors (table 3). No significant association of SNPs with OS was observed after correction of patient factors (table 3). Of note, homozygous and heterozygous variants of *GZMB* rs8192917 were not significantly associated with OS (HR: 1.19; 95% CI: 0.91 to 1.57;  $p=0.212$ ; table 2, figure 1D). Homozygous and heterozygous variants of *GZMB* rs8192917 were significantly associated with worse BOR (OR: 1.60; 95% CI: 1.01 to 2.52;  $p=0.044$ ; table 2) and could be internally validated for the association with BOR (OR 95% CI: 1.05 to 2.55, bias: 0.007; bias-corrected 95% CI: 1.09 to 2.57;  $p=0.030$ , online supplementary table 3). All the results from both univariate ( $p<0.1$ ) and multivariate analyses of the association with PFS, OS or BOR are shown in table 3. Results from the internal validation of factors that were significantly associated after correction for patient factors ( $p$  value  $<0.05$ ) are shown in online supplementary table 3. For a subset of patients, both serum levels of granzyme B and germline variation

of *GZMB* c.128T>C (rs8192917) were available for analysis. Patients with homozygous and heterozygous variants of *GZMB* rs8192917 ( $n=19$ ) had significant lower serum levels of granzyme B compared with patients with wild-type *GZMB* ( $n=34$ ; mean difference 8.6 pg/mL, 95% CI 1.77 to 15.38,  $p=0.015$ ).

#### Serum levels of granzyme B are accompanied by presence of T cells with terminal differentiation and exhausted phenotype

Next, we assessed the relationship between serum granzyme B as well as genetic variations of *GZMB* and cytotoxic immune cell populations in blood. Overall, there was a tendency that patients with lower serum granzyme B levels had lower absolute numbers of peripheral CD56<sup>+</sup> NK cells (mean 141 vs 205 cells/ $\mu$ L,  $p=0.16$ ; online supplementary figure 2) and CD8<sup>+</sup> T cells (346 vs 463 cells/ $\mu$ L,  $p=0.41$ ; figure 2A) when compared with patients with higher serum granzyme B levels. In fact, patients with homozygous or heterozygous variants of *GZMB* rs8192917 had a higher number of CD8<sup>+</sup> T cells but not CD56<sup>+</sup> NK cells than patients with wild-type *GZMB* (figure 2B and online supplementary figure 2B). Further, we studied

**Table 2** Association between *GZMB* genotype and clinical outcome

Parameter	Test variables	Univariate analysis		Multivariate analysis	
		HR (95% CI)	P value	HR (95% CI)	P value
<b>PFS</b>					
<i>GZMB</i> c.128T>C	CC+CT vs TT	1.39 (1.07 to 1.80)	0.013*	1.38 (1.02 to 1.87)	0.036*
WHO	0 vs ≥1	0.66 (0.46 to 0.95)	0.027*	0.61 (0.42 to 0.89)	0.01*
Sex	Male vs female	1.38 (1.06 to 1.80)	0.018*	1.29 (0.95 to 1.76)	0.103
<b>OS</b>					
<i>GZMB</i> c.128T>C	CC+CT vs TT	1.19 (0.91 to 1.57)	0.212		
WHO	0 vs ≥1	0.52 (0.35 to 0.77)	0.001*		
Sex	Male vs female	1.40 (1.05 to 1.86)	0.023*		
Parameter	Test variables	Univariate analysis		Multivariate analysis	
		OR (95% CI)	P value	OR (95% CI)	P value
<b>BOR</b>					
<i>GZMB</i> c.128T>C	CC +CT vs TT	1.63 (1.04 to 2.57)	0.033*	1.60 (1.01 to 2.52)	0.044*
Primary tumor	Other vs adeno	0.63 (0.40 to 0.98)	0.041*	0.63 (0.41 to 0.99)	0.045*

Univariate and multivariate analysis of the association of germline variation of *GZMB* and PFS, OS, or BOR. Patient factors associated with OS/PFS ( $p$  value<0.1) were included in the multivariate analysis. Significance is marked by \*. BOR, best overall response; OS, overall survival; PFS, progression-free survival; WHO, WHO performance status.

whether granzyme B levels or *GZMB* genotypes correlate with frequencies of those immune cell phenotypes that correspond to either terminal differentiation (CCR7<sup>+</sup>CD45RA<sup>+</sup>) or exhaustion (PD1<sup>+</sup> and TIM3<sup>+</sup>) of CD8<sup>+</sup> T cells, as signs of T cell cytotoxicity. Interestingly, patients with lower serum granzyme B levels had a lower proportion of CCR7<sup>+</sup>CD45RA<sup>+</sup>CD8<sup>+</sup> T cells (mean 44 vs 54 %,  $p=0.040$ ) as well as PD1<sup>+</sup>TIM3<sup>+</sup>CD8<sup>+</sup> T cells (mean 4.5 vs 7.8 %,  $p=0.001$ ; [figure 2A](#)). No significant association nor trend could be observed between *GZMB* genotype and frequencies of T cells with these phenotypes ([figure 2B](#)).

#### Relationship between serum granzyme B, expression of PD-L1 and TMB

Interaction analysis for PFS and OS was performed between serum granzyme B, and PD-L1 and TMB in a subset of evaluable patients. In the univariate analysis, TMB (HR: 7.31; 95% CI: 1.5 to 34.7;  $p=0.01$ ) was significantly correlated with PFS, while expression of PD-L1 (HR: 4.30; 95% CI: 0.9 to 19.8;  $p=0.06$ ) or serum granzyme B (HR: 2.34; 95% CI: 0.9 to 5.9;  $p=0.07$ ) did not meet the threshold for significance (online supplementary table 4). Moreover, only serum granzyme B was significantly correlated with OS (HR: 2.95; 95% CI: 1.09 to 7.93;  $p=0.03$ ; online supplementary table 5). Multivariate analysis of these biomarkers (namely, serum granzyme B, PD-L1 and TMB) for PFS and OS did not meet significance. Of note, the HRs were in favor of higher levels of PD-L1 (≥50%), TMB (≥10 mut/Mb) and serum granzyme B (≥1.27 pg/mL), yet expression of PD-L1 (%), TMB (mut/Mb) and serum granzyme B levels (pg/mL) were not significantly correlated with each other (online supplementary table 6).

#### DISCUSSION

The present study demonstrates that serum levels of granzyme B and alterations of the *GZMB* locus may contribute to resistance mechanisms of PD-1 blockade. This concept ([figure 3](#)) is based on our findings that (1) low serum levels of granzyme B and (2) a common germline polymorphism of the *GZMB* gene were associated with worse clinical outcome after PD-1 blockade in patients with metastatic NSCLC. Moreover, serum levels of granzyme B were positively correlated with peripheral abundance of T cell populations that were highly differentiated or were expressing the immune checkpoints PD-1 and TIM3. The results are inline with our hypothesis that cytotoxic effector functions of lymphocytes (ie, through granzymes) are critical for the anti-PD-1 antibody-mediated immune effects.

Granzyme B levels were determined at baseline in patients with stage IV NSCLC prior to start with PD-1 ICIs. The median granzyme B level in this cohort was 1.27 pg/mL (range 0–88 pg/mL), which was lower than reported levels in healthy controls, for example, a median plasma granzyme B of 5.7 pg/mL (IQR 3.7–7.1 pg/mL;  $n=38$ )<sup>32</sup> or 11.5 pg/mL (range 1–130 pg/mL;  $n=54$ ).<sup>33</sup> Measurements of granzyme B in serum were consistent with measurements in plasma.<sup>33</sup> Our findings confirm the hypothesis that lower granzyme B levels in patients with metastatic cancer mirror the immune microenvironment of tumors favoring tumor growth by halting the anti-tumor response of cytotoxic immune cells. This may be a result of those germline variations that impact cytotoxic functions of lymphocytes.

**Table 3** Association between investigated SNPs and clinical outcome

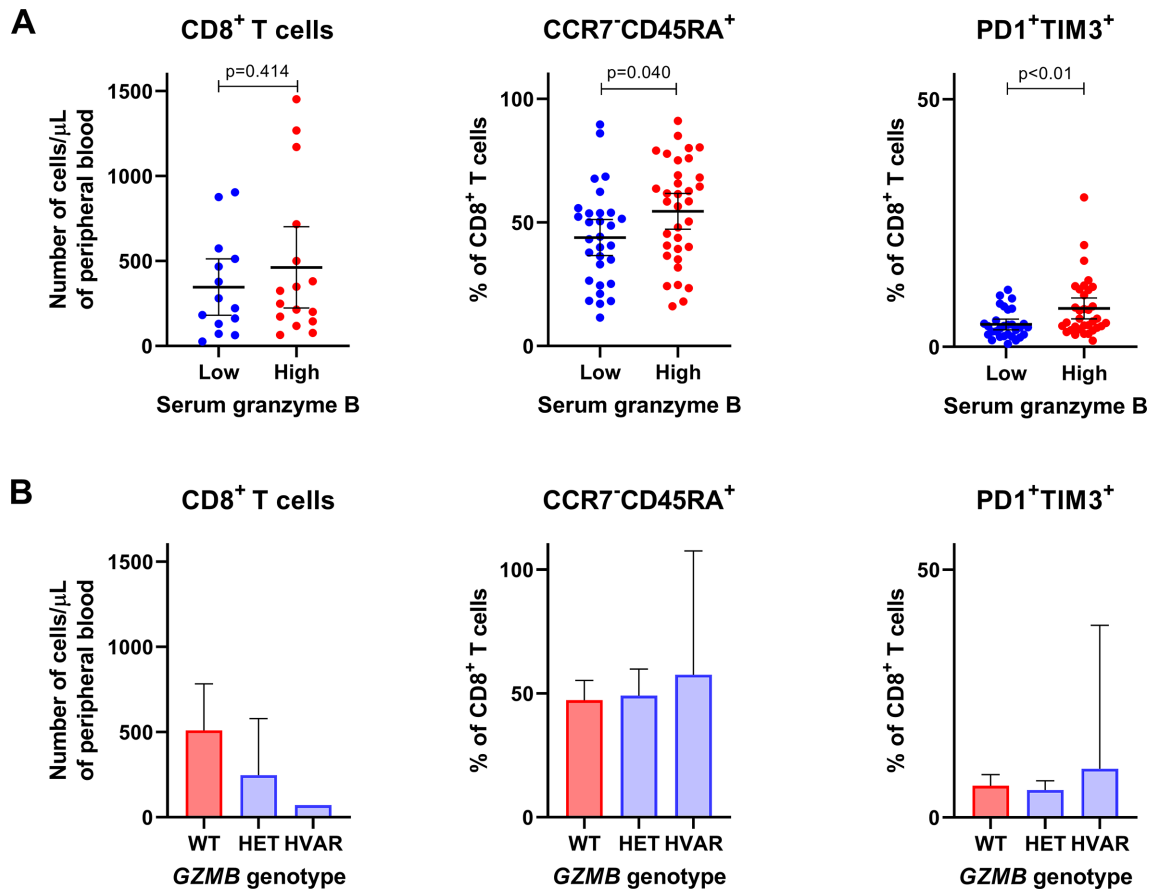
Parameter	Test variables	HR (95% CI)	P value
<b>Univariate analysis (PFS)</b>			
<i>IFNG</i> c.874T>A	AA+AT vs TT	0.76 (0.58 to 0.99)	0.045
<i>IL2RA</i> c.64+5006T>C	CC+CT vs TT	0.80 (0.62 to 1.04)	0.098
WHO performance status	0 vs ≥1	0.66 (0.46 to 0.95)	0.027
Sex	Male vs female	1.38 (1.06 to 1.80)	0.018
<b>Multivariate analysis (PFS)</b>			
<i>IFNG</i> c.874T>A	AA+AT vs TT	0.79 (0.58 to 1.07)	0.131
WHO performance status	0 vs ≥1	0.66 (0.45 to 0.95)	0.024
Sex	Male vs female	1.26 (0.92 to 1.71)	0.148
<b>Univariate analysis (OS)</b>			
<i>IL2RA</i> c.64+5006T>C	CC+CT vs TT	0.81 (0.60 to 1.10)	0.177
WHO performance status	0 vs ≥1	0.65 (0.45 to 0.93)	0.019
Sex	Male vs female	1.29 (0.95 to 1.76)	0.101
<i>IFNG</i> c.874T>A	AA+AT vs TT	0.76 (0.55 to 1.05)	0.093
WHO performance status	0 vs ≥1	0.52 (0.34 to 0.77)	0.001
Sex	Male vs female	1.45 (1.03 to 2.02)	0.32
<b>Multivariate analysis (OS)</b>			
<i>IFNG</i> c.874T>A	AA+AT vs TT	0.72 (0.55 to 0.95)	0.021
WHO PS	0 vs ≥1	0.52 (0.35 to 0.77)	0.001
Sex	Male vs female	1.40 (1.05 to 1.86)	0.023
<b>Multivariate analysis (OS)</b>			
<i>IFNG</i> c.874T>A	AA+AT vs TT	0.76 (0.55 to 1.05)	0.093
WHO performance status	0 vs ≥1	0.52 (0.34 to 0.77)	0.001
Sex	Male vs female	1.45 (1.03 to 2.02)	0.32
Parameter	Test variables	OR (95% CI)	P value
<b>Univariate analysis (BOR)</b>			
<i>IL10</i> c.387+284C>A	AA vs AA +AC	0.25 (0.07 to 0.89)	0.033
<i>ZAP70</i> -21-4127C>A	AA vs CC+AC	0.50 (0.25 to 0.98)	0.045
Primary tumor	Other vs adeno	0.63 (0.40 to 0.98)	0.041
<b>Multivariate analysis (BOR)</b>			
<i>IL10</i> c.387+284C>A	AA vs AA +AC	0.24 (0.07 to 0.84)	0.026
Primary tumor	Other vs adeno	0.61 (0.39 to 0.96)	0.031
<i>ZAP70</i> -21-4127C>A	AA vs CC+AC	0.49 (0.24 to 0.97)	0.042
Primary tumor	Other vs adeno	0.61 (0.39 to 0.96)	0.033

Univariate and multivariate analysis of the association between germline SNPs (except those related to *GZMB* variation; those are shown in table 2) and PFS, OS, or BOR. Only SNPs that were associated with OS/PFS/BOR (p value <0.1) are shown and included in the multivariate analysis. Significance is marked by \*.

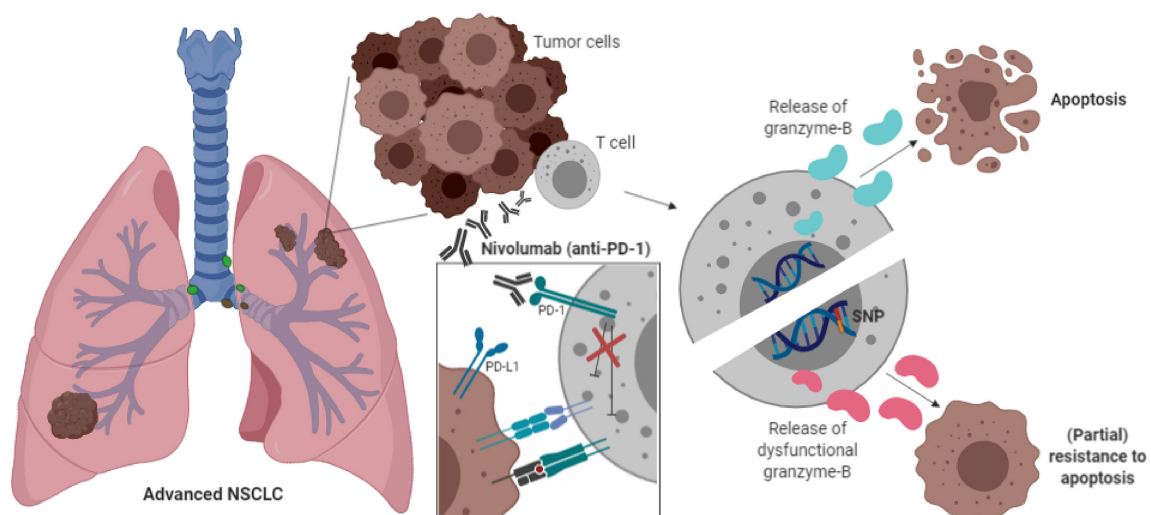
BOR, best overall response; OS, overall survival; PFS, progression-free survival; SNPs, single-nucleotide polymorphisms; WHO PS, WHO performance status.

Besides germline polymorphisms in the *GZMB* gene, polymorphisms in other genes have been investigated as well for their association with clinical outcome. Interestingly, these germline variations were not consistently found to correlate with PFS, OS, or BOR. Interpretations

of these findings are challenging, and do not necessarily implicate an absence of effects of non-*GZMB* SNPs. Although SNPs were rationally selected by their correlations with autoimmunity (online supplementary table 2), we cannot exclude that SNPs in the investigated genes



**Figure 2** Association between serum granzyme B and T cell populations with phenotypes that correspond to functional responses. Associations are shown between (A) serum granzyme B levels or (B) *GZMB* genotype and T cell populations in blood. CD8<sup>+</sup> T cells is considered as a subset of T lymphocytes with cytotoxic functions. CCR7<sup>-</sup>CD45RA<sup>+</sup> cytotoxic T cells correspond with terminal differentiation, and PD1<sup>+</sup>TIM3<sup>+</sup> cytotoxic T cells correspond with exhaustion, both signs of T cell activation or cytotoxicity. HET, heterozygous variant; HVAR, homozygous variant; WT, wild type.



**Figure 3** Mechanism of action. Schematic overview of the proposed mechanism of action of the *GZMB* SNP. Presence of the *GZMB* c.128T>C SNP indicates the expression of variant granzyme B isotypes (indicated as pink granzyme B molecules) that might lead to impaired cytotoxic effector functions of T cells, resulting in impaired apoptosis of tumor cells and partial resistance to anti-PD-1 blockade. The molecular mechanism of the PD-1 antibody nivolumab is shown in the white box. This figure was created by DPH in BioRender.com. PD-1, programmed cell death 1 receptor; SNP, single-nucleotide polymorphism.

contribute to therapy resistance, as well as epigenetic or post-transcriptional regulation of gene expression or function. For example, PD-1 ICIs are suggested to only minimally target responses mediated by T cell receptors (involving *ZAP70*) and their primary method of action is most likely explained by relieving SHP-2 inhibition of the CD28 costimulatory pathway.<sup>8</sup> Genomic alterations in tumors may involve loss of tumor antigens that are recognized by T cells, loss of antigen-presenting machinery components, tumor-induced inactivation of T cell signaling and insensitivity to effector functions of lymphocytes, death receptors or interferons.<sup>34</sup>

The nonsynonymous substitution of *GZMB* c.128T>C (rs8192917) was found to be in strong linkage disequilibrium with other common (MAF >15%) exonic variants, representing a haplotype block (data publicly available from The Single Nucleotide Polymorphism Database (<https://www.ncbi.nlm.nih.gov/snp/>; online supplementary figure 3). This indicates that two predominant isoforms of granzyme B are expressed in the European population, defining two predominant isoforms, and is consistent with previous reports that genetic variation of *GZMB* leads to change of three amino acids of the mature protein (Q<sup>48</sup>P<sup>88</sup>Y<sup>245</sup> to R<sup>48</sup>A<sup>88</sup>H<sup>245</sup>).<sup>15 35</sup> Interestingly, the two isoforms have a similar expression, stability and proteolytic activity, however, the variant granzyme B isotype was observed to be incapable of inducing apoptosis in tumor cell lines in contrast to the functional effects of the more common isotype.<sup>36</sup>

Interaction analysis between granzyme B, expression of PD-L1 in tumor and TMB showed that these markers were not intercorrelated, which suggests their value as independent biomarkers for clinical outcome after PD-1 ICIs. Although our findings in regard to serum granzyme B and *GZMB* germline variation are confirmed in a large patient cohort and by internal validation, further investigations need to be performed to determine the clinical value as a predictive or prognostic biomarker of response to PD-1 blockade. These investigations include comparative analysis with these currently used biomarkers in an extended patient cohort, and evaluation of the diagnostic accuracy and mapping of the sensitivity of serum granzyme B in a prospective clinical trial. The results may not be directly applicable to other ethnic groups, as the study was performed in a European population.

An important aspect of our results is that germline genetics related to cytotoxic effector functions of lymphocytes contribute to mechanisms of resistance to ICI therapy. Previously, it has been shown that germline variations in regard to the antigen presentation machinery are related to response to ICIs, that is HLA-I heterozygosity.<sup>37</sup> Considering the urgent need to understand how genetic variation affects response to ICIs, as reviewed by Havel *et al.*,<sup>5</sup> further work is warranted to identify novel genetic loci. We believe that apart from genes that are involved in antigen presentation, other immune-modulating genes may also contribute to response and resistance mechanisms of ICIs, of which granzyme B is an example.

Determination of germline variations of patients with cancer contributing to response to ICIs may well be performed by future genome-wide association studies.

## CONCLUSIONS

While the immune-oncology field rapidly advances, our understanding of ICI resistance mechanisms is limited and effective patient selection is lacking. Our data demonstrate that granzyme B is an important player in the anti-tumor immunity, as a consequence of the finding that low serum levels of granzyme B and germline variation of the *GZMB* gene contributes to resistance to PD-1 blockade in advanced NSCLC. As recent clinical trial results underline effective biomarker-based patient selection, future trials that incorporate granzyme B into diagnostics are considered as a promising step in this direction.

### Author affiliations

<sup>1</sup>Department of Medical Oncology, Erasmus MC Cancer Institute, Rotterdam, The Netherlands

<sup>2</sup>Department of Pulmonology, Erasmus University Medical Center, Rotterdam, The Netherlands

<sup>3</sup>Department of Pulmonology, Amphia Hospital, Breda, The Netherlands

<sup>4</sup>Department of Clinical Chemistry, Erasmus University Medical Center, Rotterdam, The Netherlands

<sup>5</sup>Department of Hospital Pharmacy, Erasmus University Medical Center, Rotterdam, The Netherlands

<sup>6</sup>Department of Radiology & Nuclear Medicine, Erasmus University Medical Center, Rotterdam, The Netherlands

**Acknowledgements** We thank Kazem Nasserinejad (Erasmus MC, Rotterdam, The Netherlands) for his assistance with the statistics, and Wim Dik (Erasmus MC, Rotterdam, The Netherlands) for performing the LUMINEX assay.

**Contributors** DPH, SB, AAMvdV, RHNvS, JA and RHJM contributed to the conception and design of the study. DPH drafted the manuscript. EO-DH contributed to the acquisition, analysis of data, and contributed statistical review of data. DPH, SLWK, AAMvdV, RD, RHNvS, JA and RHJM took part in interpretation of data. DPH, NS, AAMvdV and JA performed radiological evaluation. DPH and RD performed additional analysis of peripheral immune cell phenotypes. EB, NS and SEB contributed logistic, technical and material support. All authors contributed to critical revision of the manuscript for important intellectual content. All authors read and approved the final manuscript.

**Funding** This research was funded by the Departments of Medical Oncology, Pulmonology, and Clinical Chemistry, Erasmus MC, Rotterdam, The Netherlands.

**Competing interests** CHvdL reports non-financial support from BMS, MSD, Roche, Boehringer Ingelheim and AstraZeneca outside the submitted work. AAMvdV reports support from BMS, MSD, Sanofi, Roche, Novartis, Pfizer, Pierre Fabre, Ipsen, Eisai and Bayer outside the submitted work. JA reports personal fees from MSD, BMS, Amphera, Eli-Lilly, Takeda, Bayer, Roche, Boehringer Ingelheim, AstraZeneca outside the submitted work, and has a patent allogenic tumor cell lysate licensed to Amphera, a patent combination immunotherapy in cancer and a patent biomarker for immunotherapy pending. RHJM reports grants and non-financial support from Astellas, Bayer and Boehringer Ingelheim, grants from Cristal Therapeutics and Pamgene, grants and personal fees from Novartis, Servier, grants and non-financial support from Pfizer, grants from Roche, Sanofi, outside the submitted work.

**Patient consent for publication** Not required.

**Ethics approval** Ethics approval of Multomab study (Medical Ethical Board Erasmus MC ref. 16-011), patient signed written informed consent provided before study entry.

**Provenance and peer review** Not commissioned; externally peer reviewed.

**Data availability statement** Data are available upon reasonable request. The datasets used and/or analyzed during the current study are available from the corresponding author on reasonable request.



**Open access** This is an open access article distributed in accordance with the Creative Commons Attribution Non Commercial (CC BY-NC 4.0) license, which permits others to distribute, remix, adapt, build upon this work non-commercially, and license their derivative works on different terms, provided the original work is properly cited, appropriate credit is given, any changes made indicated, and the use is non-commercial. See <http://creativecommons.org/licenses/by-nc/4.0/>.

#### ORCID iD

Daan P. Hurkmans <http://orcid.org/0000-0002-8750-5188>

#### REFERENCES

- Sharpe AH, Pauken KE. The diverse functions of the PD1 inhibitory pathway. *Nat Rev Immunol* 2018;18:153–67.
- Hanahan D, Weinberg RA. Hallmarks of cancer: the next generation. *Cell* 2011;144:646–74.
- Borghaei H, Paz-Ares L, Horn L, et al. Nivolumab versus docetaxel in advanced Nonsquamous non-small-cell lung cancer. *N Engl J Med* 2015;373:1627–39.
- Brahmer J, Reckamp KL, Baas P, et al. Nivolumab versus docetaxel in advanced squamous-cell non-small-cell lung cancer. *N Engl J Med* 2015;373:123–35.
- Havel JJ, Chowell D, Chan TA. The evolving landscape of biomarkers for checkpoint inhibitor immunotherapy. *Nat Rev Cancer* 2019;19:133–50.
- Kunert A, Basak EA, Hurkmans DP, et al. CD45RA<sup>+</sup>CCR7<sup>-</sup> CD8 T cells lacking co-stimulatory receptors demonstrate enhanced frequency in peripheral blood of NSCLC patients responding to nivolumab. *J Immunother Cancer* 2019;7:149.
- Hui E, Cheung J, Zhu J, et al. T cell costimulatory receptor CD28 is a primary target for PD-1-mediated inhibition. *Science* 2017;355:1428–33.
- Kamphorst AO, Wieland A, Nasti T, et al. Rescue of exhausted CD8 T cells by PD-1-targeted therapies is CD28-dependent. *Science* 2017;355:1423–7.
- Larimer BM, Wehrenberg-Klee E, Dubois F, et al. Granzyme B PET imaging as a predictive biomarker of immunotherapy response. *Cancer Res* 2017;77:2318–27.
- Voskoboinik I, Whisstock JC, Trapani JA. Perforin and granzymes: function, dysfunction and human pathology. *Nat Rev Immunol* 2015;15:388–400.
- Cao X, Cai SF, Fehniger TA, et al. Granzyme B and perforin are important for regulatory T cell-mediated suppression of tumor clearance. *Immunity* 2007;27:635–46.
- Nagata S. Apoptosis by death factor. *Cell* 1997;88:355–65.
- Pinkoski MJ, Hobman M, Heibin JA, et al. Entry and trafficking of granzyme B in target cells during granzyme B-perforin-mediated apoptosis. *Blood* 1998;92:1044–54.
- Eisenhauer EA, Therasse P, Bogaerts J, et al. New response evaluation criteria in solid tumours: revised RECIST guideline (version 1.1). *Eur J Cancer* 2009;45:228–47.
- Jin Y, Andersen G, Yorgov D, et al. Genome-wide association studies of autoimmune vitiligo identify 23 new risk loci and highlight key pathways and regulatory variants. *Nat Genet* 2016;48:1418–24.
- Xu M, Liu Y, Liu Y, et al. Genetic polymorphisms of GZMB and vitiligo: a genetic association study based on Chinese Han population. *Sci Rep* 2018;8:13001.
- Ramos PS, Criswell LA, Moser KL, et al. A comprehensive analysis of shared loci between systemic lupus erythematosus (SLE) and sixteen autoimmune diseases reveals limited genetic overlap. *PLoS Genet* 2011;7:e1002406.
- Kurreeman FAS, Daha NA, Chang M, et al. Association of IL2RA and IL2RB with rheumatoid arthritis: a replication study in a Dutch population. *Ann Rheum Dis* 2009;68:1789–90.
- Wang X-X, Chen T. Meta-analysis of the association of IL2RA polymorphisms rs2104286 and rs12722489 with multiple sclerosis risk. *Immunol Invest* 2018;47:431–42.
- Lee YH, Bae S-C. Association between interferon- $\gamma$ +874 T/A polymorphism and susceptibility to autoimmune diseases: a meta-analysis. *Lupus* 2016;25:710–8.
- Kim K, Cho S-K, Sestak A, et al. Interferon-gamma gene polymorphisms associated with susceptibility to systemic lupus erythematosus. *Ann Rheum Dis* 2010;69:1247–50.
- Chen S, Li Y, Deng C, et al. The associations between PD-1, CTLA-4 gene polymorphisms and susceptibility to ankylosing spondylitis: a meta-analysis and systemic review. *Rheumatol Int* 2016;36:33–44.
- Liu X, Hu L-H, Li Y-R, et al. Programmed cell death 1 gene polymorphisms is associated with ankylosing spondylitis in Chinese Han population. *Rheumatol Int* 2011;31:209–13.
- Narumi Y, Isomoto H, Shiota M, et al. Polymorphisms of PTPN11 coding SHP-2 as biomarkers for ulcerative colitis susceptibility in the Japanese population. *J Clin Immunol* 2009;29:303–10.
- Bouzid D, Fourati H, Amouri A, et al. Association of ZAP70 and PTPN6, but not BANK1 or CLEC2D, with inflammatory bowel disease in the Tunisian population. *Genet Test Mol Biomarkers* 2013;17:321–6.
- Namipashaki A, Razaghi-Moghadam Z, Ansari-Pour N. The essentiality of reporting Hardy-Weinberg equilibrium calculations in population-based genetic association studies. *Cell J* 2015;17:187–92.
- Bins S, Basak EA, El Bouazzaoui S, et al. Association between single-nucleotide polymorphisms and adverse events in nivolumab-treated non-small cell lung cancer patients. *Br J Cancer* 2018;118:1296–301.
- Hurkmans DP, Kuipers ME, Smit J, et al. Tumor mutational load, CD8<sup>+</sup> T cells, expression of PD-L1 and HLA class I to guide immunotherapy decisions in NSCLC patients. *Cancer Immunol Immunother* 2020. doi:10.1007/s00262-020-02506-x. [Epub ahead of print: 12 Feb 2020].
- Lewis CM. Genetic association studies: design, analysis and interpretation. *Brief Bioinform* 2002;3:146–53.
- Efron B. Bootstrap methods: another look at the jackknife. *Ann Stat* 1979;7:1–26.
- It's time to talk about ditching statistical significance. *Nature* 2019;567:283.
- de Jong HK, Garcia-Laorden MI, Hoogendijk AJ, et al. Expression of intra- and extracellular granzymes in patients with typhoid fever. *PLoS Negl Trop Dis* 2017;11:e0005823.
- Spaeny-Dekking EH, Hanna WL, Wolbink AM, et al. Extracellular granzymes A and B in humans: detection of native species during CTL responses in vitro and in vivo. *J Immunol* 1998;160:3610–6.
- Zaretsky JM, Garcia-Diaz A, Shin DS, et al. Mutations associated with acquired resistance to PD-1 blockade in melanoma. *N Engl J Med* 2016;375:819–29.
- Ferrara TM, Jin Y, Gowan K, et al. Risk of generalized vitiligo is associated with the common 55R-94A-247H variant haplotype of GZMB (encoding granzyme B). *J Invest Dermatol* 2013;133:1677–9.
- McIlroy D, Cartron P-F, Tuffery P, et al. A triple-mutated allele of granzyme B incapable of inducing apoptosis. *Proc Natl Acad Sci U S A* 2003;100:2562–7.
- Chowell D, Morris LGT, Grigg CM, et al. Patient HLA class I genotype influences cancer response to checkpoint blockade immunotherapy. *Science* 2018;359:582–7.