

RESEARCH ARTICLE

Open Access

RNA-seq analysis reveals significant transcriptome changes in turbot (*Scophthalmus maximus*) suffering severe enteromyxosis

Diego Robledo^{1†}, Paolo Ronza^{2†}, Peter W Harrison³, Ana Paula Losada², Roberto Bermúdez⁴, Belén G Pardo⁵, María José Redondo⁶, Ariadna Sitjà-Bobadilla⁶, María Isabel Quiroga^{2*} and Paulino Martínez^{3,5}

Abstract

Background: Enteromyxosis caused by the intestinal myxozoan parasite *Enteromyxum scophthalmi* is a serious threat for turbot (*Scophthalmus maximus*, L.) aquaculture, causing severe catarrhal enteritis leading to a cachectic syndrome, with no therapeutic options available. There are still many aspects of host-parasite interaction and disease pathogenesis that are yet to be elucidated, and to date, no analysis of the transcriptomic changes induced by *E. scophthalmi* in turbot organs has been conducted. In this study, RNA-seq technology was applied to head kidney, spleen and pyloric caeca of severely infected turbot with the aim of furthering our understanding of the pathogenetic mechanisms and turbot immune response against enteromyxosis.

Results: A huge amount of information was generated with more than 23,000 identified genes in the three organs, amongst which 4,762 were differently expressed (DE) between infected and control fish. Associate gene functions were studied based on gene ontology terms and available literature, and the most interesting DE genes were classified into five categories: 1) immune and defence response; 2) apoptosis and cell proliferation; 3) iron metabolism and erythropoiesis; 4) cytoskeleton and extracellular matrix and 5) metabolism and digestive function. The analysis of down-regulated genes of the first category revealed evidences of a connexion failure between innate and adaptive immune response, especially represented by a high number of DE interferon-related genes in the three organs. Furthermore, we found an intense activation of local immune response at intestinal level that appeared exacerbated, whereas in kidney and spleen genes involved in adaptive immune response were mainly down-regulated. The apoptotic machinery was only clearly activated in pyloric caeca, while kidney and spleen showed a marked depression of genes related to erythropoiesis, probably related to disorders in iron homeostasis. The genetic signature of the causes and consequences of cachexia was also demonstrated by the down-regulation of the genes encoding structural proteins and those involved in the digestive metabolism.

Conclusions: This transcriptomic study has enabled us to gain a better understanding of the pathogenesis of enteromyxosis and identify a large number of DE target genes that bring us closer to the development of strategies designed to effectively combat this pathogen.

Keywords: RNA-seq, Transcriptome, Turbot, *Enteromyxum scophthalmi*, Enteromyxosis, Immune response, Apoptosis, Erythropoiesis, Cytoskeleton, Digestive function

* Correspondence: misabel.quiroga@usc.es

†Equal contributors

²Departamento de Ciencias Clínicas Veterinarias, Facultad de Veterinaria, Universidad de Santiago de Compostela, Lugo 27002, Spain
Full list of author information is available at the end of the article

Background

Turbot (*Scophthalmus maximus*, L.) is a marine flatfish which has been intensively cultured in Europe for more than 25 years. Turbot aquaculture production currently accounts for over 10,000 tons/year in Europe, and has rapidly increased in China during the last decade, reaching more than 60,000 tons in 2011 [1]. Although its entire life cycle is routinely carried out at farm facilities, major challenges related to growth rate and disease outbreaks are the main concerns for the turbot industry [2-5].

The myxozoan genus *Enteromyxum* includes three intestinal species, which all cause serious problems for seawater aquaculture. *Enteromyxum*'s virulence varies depending on the specific parasite-host interaction, ranging from highly pathogenic in some species pairs, such as *E. scophthalmi* infection of turbot, to chronic (*E. leei* in gilthead sea bream, *Sparus aurata*) or subclinical (*E. fugu* in tiger puffer, *Takifugu rubripes*) disease signs in others. *E. scophthalmi* is a serious threat for cultured turbot, that spreads rapidly in farm facilities due to direct fish-to-fish transmission, and causes a cachectic syndrome which eventually leads to death [6]. Diseased fish present anorexia, anaemia, weight loss, poor conversion rates and delayed growth, with mortality rates reaching up to 100% in many cases [6,7]. The main histological changes are catarrhal enteritis and lymphohaematopoietic depletion of spleen and kidney, the severity of which increases with the progression of the infection [8]. Although some drugs have been able to lower the mortality rates [9], currently there is no effective treatment for enteromyxosis. Understanding the disease pathogenesis through the study of host-parasite interaction and turbot immune response is critical in order to develop effective treatments and apply preventive measures. Numerous recent studies have been focused on elucidating these processes, mainly through histopathological, immunoenzymatic and serological assays [10-16]. Nevertheless, while PCR-array and microarray based molecular profiling of gilthead sea bream response to *E. leei* has been recently published [17,18], gene expression characterization of *E. scophthalmi*-infected turbot is lacking. Transcriptome analysis is an invaluable tool for the elucidation of the biological processes behind host-parasite interactions, and in the last decade this approach, mainly based upon microarrays, has been extensively used in fish immunology and pathology [19], and specifically in turbot for analyzing furunculosis and scuticociliatosis [20,21]. Additionally, the identification of relevant immune gene variants conferring tolerance to parasites is essential in order to develop marker assisted selection programmes that can lead to increased resistance [17,22]. RNA-seq is a powerful technique for the analysis of gene expression due to its higher sensitivity and specificity in comparison to microarrays, along with its ability to detect new genes, rare transcripts, alternative splice isoforms,

and novel SNPs which can be used for association studies [23-25]. For these reasons it is rapidly becoming the technology of choice for transcriptomic studies [19,26].

In this study, a gene expression analysis of *E. scophthalmi*-infected turbot was carried out using RNA-seq on the two major lymphohaematopoietic organs, head kidney and spleen, and also on the pyloric caeca, the target intestinal region where the parasite infection starts in this species [27]. Fish categorised with a severe infection were used with the aim of capturing the gene expression signatures associated with advanced stages of the disease as a first reference to investigate the genetic mechanisms underlying the pathogenesis of enteromyxosis. Our findings constitute the basis of future studies aimed at investigating resistance-related genes and associated genetic variants that could be applied in breeding programmes. This is the first study to tackle the molecular basis of lesion development and the immune response underlying enteromyxosis in turbot.

Results

Histopathology

Experimentally-infected (recipient, RCPT) fish selected for RNA-seq analysis presented catarrhal enteritis characterized by severe parasitic load along the entire gastrointestinal tract associated with moderate to severe inflammatory infiltrates and lining epithelium detachment. In most gut segments, apoptotic figures in both epithelium and lamina propria were observed, while signs of epithelium regeneration were sporadically annotated. Spleen and head kidney showed moderate to severe cellular depletion, with occasional observation of indicators of apoptosis. There were no significant histological changes in the other organs of recipient fish (RCPT) neither in any samples from control fish (CTRL).

RNA-seq

A total of ~170 million 100 bp pair-end reads were sequenced, accounting for on average 15 million reads per sample post-filtering. Filtered reads were mapped to the turbot genome identifying a total of 54,864 transcripts and 23,063 genes in the three organs. The average number of raw, filtered and mapped reads for the samples of each organ are shown in Table 1. For each organ the control and infected samples were hierarchically clustered according to

Table 1 RNA-Seq sample statistics

Sample	Raw reads	Trimmed reads	Aligned reads
Head kidney	17,431,026	15,929,258	14,321,389
Spleen	16,393,159	14,705,171	13,124,477
Pyloric caeca	17,094,324	15,341,340	9,963,567

Average raw reads obtained by Illumina sequencing, average trimmed reads remaining after filtering and average reads aligned to the turbot genome per sample are shown for each organ.

their transcript expression (Figure 1) confirming the correct classification of infected and control samples.

Differential expression analysis

A total of 4,762 differentially expressed (DE) genes were identified across the three organs when comparing RCPT and CTRL fish. The number of DE genes (up- and down-regulated) for each organ and those shared between organs is shown in Figure 2. A high number of down-regulated genes (3,062) were detected, 68.5% more than up-regulated (1,817). Pyloric caeca showed the highest amount of DE genes, almost double that of the other two organs. The percentage of DE annotated transcripts was similar in the three organs: 44.1% in head kidney, 181 up-regulated and 400 down-regulated; 42.3% in spleen, 229 up-regulated and 353 down-regulated; and 46.9% in pyloric caeca, 562 up-regulated and 851 down-regulated. Log₂ fold change (FC) values ranged from 11.26 to -11.18 in head kidney, from 13.29 to -12.83 in spleen, and from 12.13 to -15.18 in pyloric caeca.

Common DE genes between the three organs

A group of 117 DE genes were shared between the three organs. Among them, 48 were successfully annotated: 11 up- and 26 down-regulated, and 11 either up- or down-regulated depending on the organ (Additional file 1: Table S1, ST1).

Amongst the shared up-regulated genes, some were involved in innate immune response and antigen presentation such as *IL4I1*, involved in the lysosomal processing and presentation of antigens; *ALOXE3*, an enzyme that participates in leukotrienes metabolism; and *MASP3b*, which plays a prominent role in the activation of the lectin complement pathway.

Amongst the down-regulated genes, two sets were of particular interest, one directly involved in immune response and the other related to cell and tissue structure disruption. The first group included several interferon (IFN)-related genes involved in antiviral immune response, such as *IRF7*, *Gig2*, *IFIT-1*, *CHERC5* and *IFI44*. Other two interesting genes were related to major histocompatibility complex

class I molecules (MHC-I), involved in the presentation of intracellular-derived antigens, and *CAT*, which encodes an essential antioxidant enzyme for cell protection against oxidative damage. The second set included several genes related to cytoskeleton: *FMNL1* (cytoskeletal organization and cell morphology and motility); *TMOD4* (geometry of the membrane skeleton); *GRXCRI* (architecture of actin filament-rich structures); and *SNPH* (microtubule-associated protein). *COLIA2*, involved in extracellular matrix structure and organization, was also found in this group.

A group of 12 up-regulated genes in pyloric caeca, but down-regulated in head kidney and spleen, included three genes which promote apoptosis (*KCNN3*, *EGR* and *TNFRSF10b*) and the immunoglobulin light chain, which plays a key role in the adaptive immune response.

The only up-regulated gene in pyloric caeca and head kidney, but down-regulated in spleen was the complement component C3, essential for the activation of the complement pathway. Finally, the only gene up-regulated in spleen and head kidney and down-regulated in pyloric caeca was aminopeptidase n, which encodes an enzyme that participates in the final digestion of peptides, but also in processing other peptide molecules such as hormones, neuropeptides and MHC class II-bound antigen peptides.

DE genes classification and organ-specific expression

We inspected the list of organ-specific DE transcripts and made a selection of the most interesting genes, which were grouped in five key broad functional categories based on GO term characterisation and on the current literature in the field. The chosen categories were 1) immune and defence response, 2) apoptosis and cell proliferation, 3) iron metabolism and erythropoiesis, 4) metabolism and digestive function and 5) cytoskeleton and extracellular matrix. The selected genes and the group to which they belong to are listed in Additional file 2: Table S2 (ST2) for head kidney, Additional file 3: Table S3 (ST3) for spleen and Additional file 4: Table S4 (ST4) for pyloric caeca. A selection of the 50 most relevant DE genes from these five categories is presented in Table 2 and their expression shown in a heatmap (Figure 3).

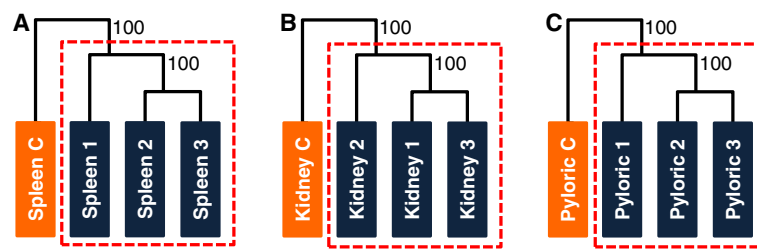
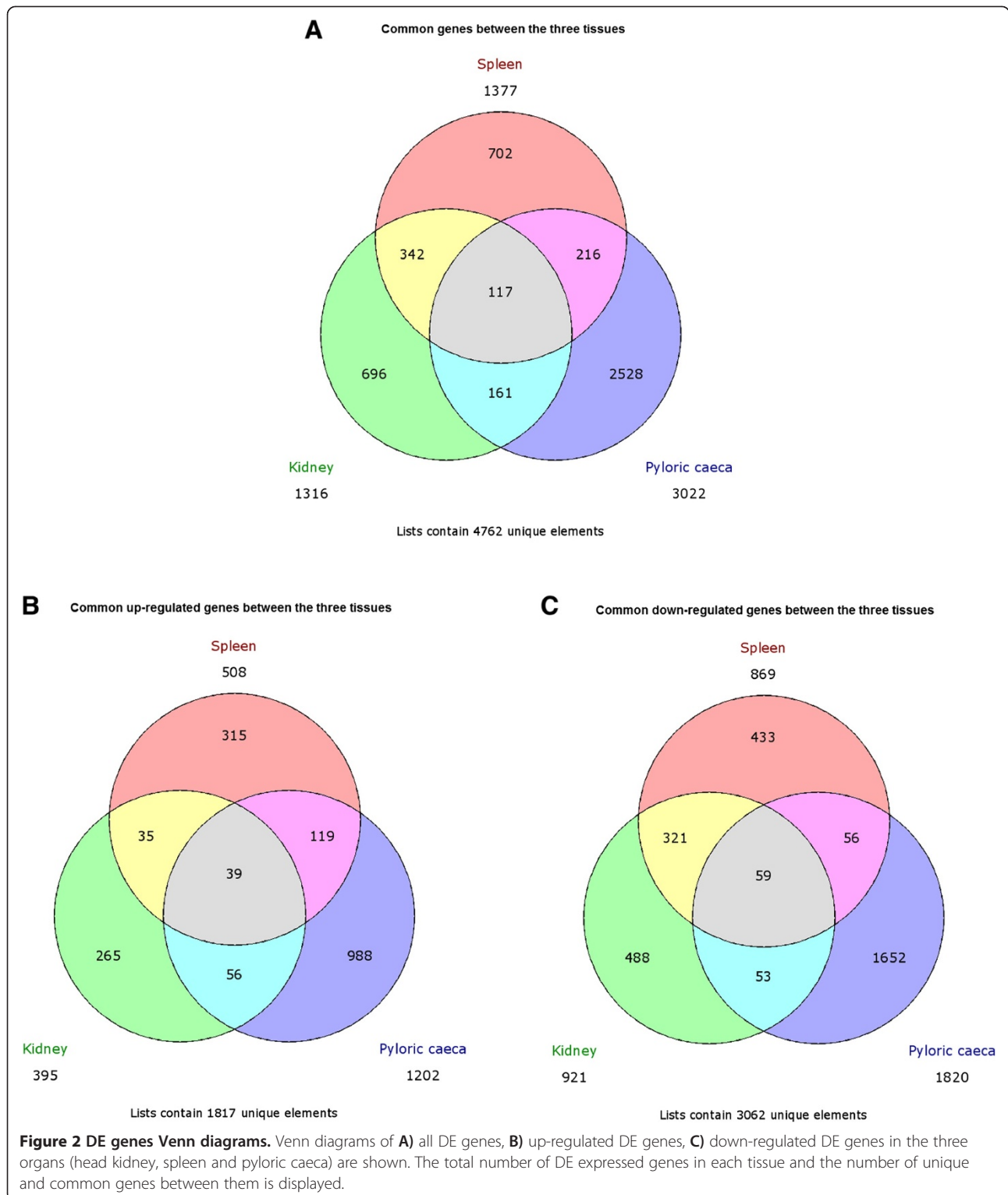


Figure 1 Samples hierarchical clustering by organ. Hierarchical clustering of all diseased and control samples for **A** Spleen, **B** Head kidney and **C** Pyloric caeca. Approximately unbiased *P*-values, computed by multi-scale bootstrap resampling, are displayed on branch nodes and clusters of samples with an approximately unbiased *P*-value > 0.95 are indicated with a dashed red box, indicating strong support.



Immune and defence response

A large number of genes related to this function were found in the three organs, but, while the number of down-regulated genes was comparable, pyloric caeca showed the most numerous group of up-regulated genes.

This included chemokines, chemokine receptors, immunoglobulin chains, interleukins and several other genes involved in both innate and adaptive immune response. In particular, a broad representation of components of the inflammatory reaction pathway like *G-CSFR*,

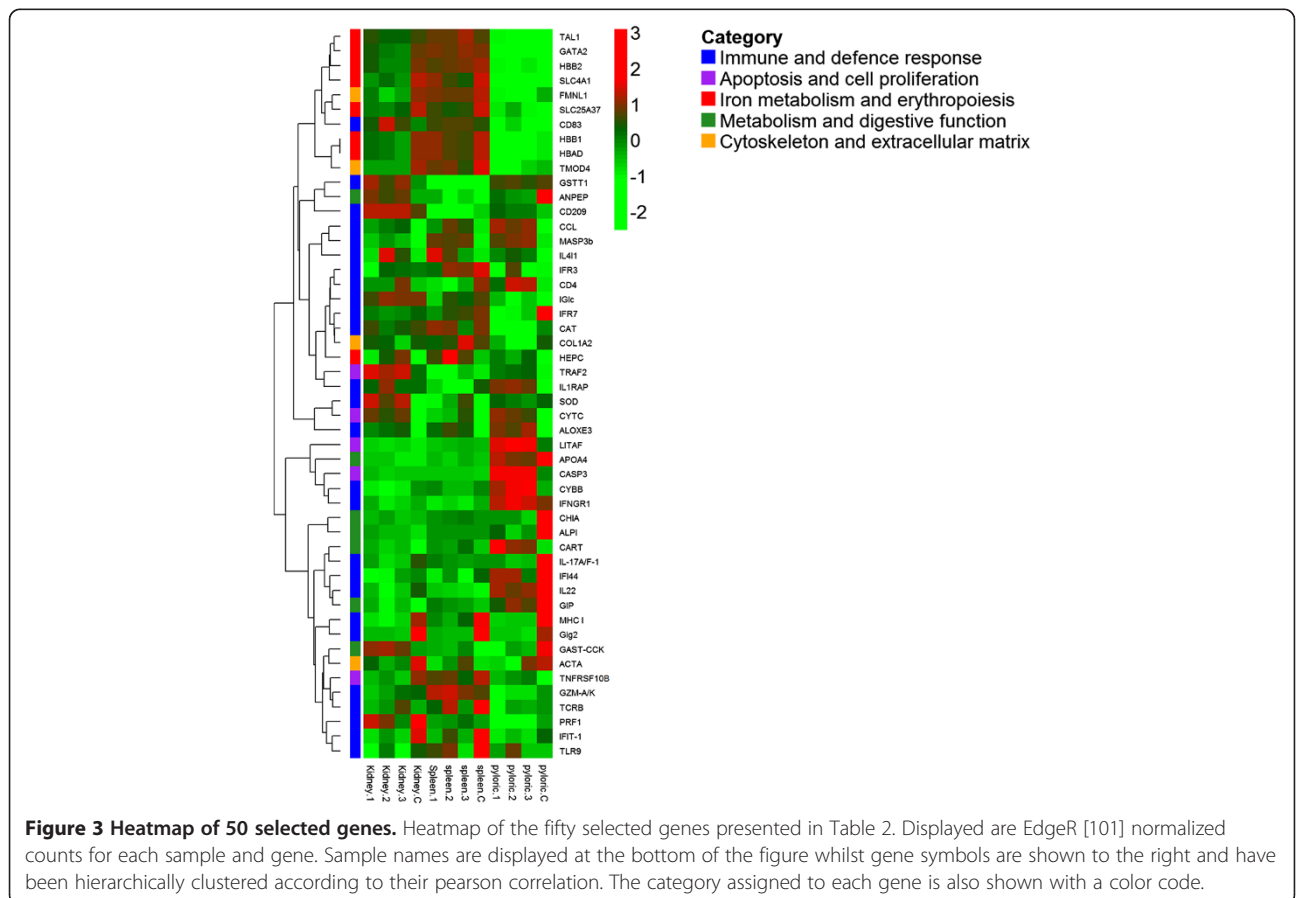
Table 2 Selection of the 50 most relevant DE genes

Gene	Short name	Log-FC head kidney	Log-FC spleen	Log-FC pyloric caeca	Category	Associated function
MHC class I antigen	MHC I	-6.3	-4.9	-5.4	1	Antigen processing and presentation
Interferon regulatory factor 7	IFR7	-1.8	-1.6	-3.6	1	Positive regulation of interferons production
Interferon-induced protein 44	IFI44	-3.2	-3.6	-2.2	1	Interferon-inducible protein
Interferon-induced protein with tetratricopeptide repeats 1	IFIT-1	-4.7	-5.0	-2.1	1	Interferon-inducible protein
Gig2-like protein	Gig2	-10.4	-12.8	-7.4	1	Interferon-inducible protein
Interferon gamma receptor alpha chain	IFNGR1	-2.7	-4.4	--	1	Regulation of interferon-gamma-mediated signalling pathway
Interferon regulatory factor 3	IFR3	-1.8	-2.1	--	1	Positive regulation of interferons production
Toll-like receptor 9	TLR9	-3.0	-3.0	--	1	Innate immune response; Positive regulation of interferons production
Mannose-binding lectin-associated serine protease-3b	MASP3b	7.6	4.9	4.5	1	Complement activation
Epidermis-type lipoxygenase 3-like	ALOXE3	5.7	6.8	10.3	1	Leukotriene metabolic process
L-amino-acid oxidase-like	IL4I1	4.8	5.9	9.5	1	Innate immune response
Interleukin-17a f-1	IL-17A/F-1	--	--	-3.8	1	Inflammatory response
Interleukin-22	IL22	-4.5	--	-1.7	1	Inflammatory response
CD83 antigen	CD83	--	-1.8	2.5	1	Defence response
CD209 antigen-like	CD209	--	-4.3	2.2	1	Innate immune response
Cytochrome b-245 heavy chain	CYBB	-4.0	--	3.7	1	Inflammatory response
CC chemokine	CCL	--	1.9	4.0	1	Inflammatory response
Interleukin-1 receptor accessory protein	IL1RAP	--	-4.2	2.6	1	Inflammatory response
Lipopolysaccharide-induced tumor necrosis factor-alpha factor	LITAF	--	-1.6	6.2	1,2	Regulation of cytokine production-Apoptotic process
Immunoglobulin light chain	IGlc	-1.8	-2.0	2.7	1	Antigen binding
T-cell surface glycoprotein cd4	CD4	--	-1.6	--	1	T cell receptor signalling pathway
T-cell receptor beta chain	TCRB	--	-2.0	--	1	T cell receptor signalling pathway
Perforin-1-like	PRF1	-3.2	--	--	1	T cell-mediated cytotoxicity
Granzyme A/K	GZM-A/K	-1.7	--	--	1	T cell-mediated cytotoxicity
Catalase	CAT	-2.0	-1.8	-2.5	1	Hydrogen peroxide catabolic process
Superoxide dismutase	SOD	--	--	-2.1	1	Removal of superoxide radicals
Glutathione s-transferase theta-1	GSTT1	--	--	-2.0	1	Oxidation-reduction process
Caspase-3-like	CASP3	--	--	5.5	2	Positive regulation of apoptotic process
Cytochrome c	CYTC	2.5	--	4.3	2	Apoptotic DNA fragmentation
TNF receptor-associated factor 2-like	TRAF2	--	--	3.6	2	Regulation of apoptotic process
Tumor necrosis factor receptor superfamily member 10b-like	TNFRSF10B	-3.2	-2.2	2.6	2	Regulation of apoptotic process
Hemoglobin subunit alpha-d	HBAD	-5.2	-3.5	--	3	Oxygen transport
Hemoglobin subunit beta-2	HBB2	-4.7	-3.8	--	3	Oxygen transport
Hemoglobin subunit beta-1	HBB1	-4.6	-3.2	--	3	Oxygen transport
Band 3 anion exchange protein	SLC4A1	-6.6	-4.5	--	3	Erythrocytes differentiation
Gata-binding factor 2-like	GATA2	-3.5	-2.2	--	3	Erythrocytes differentiation
Mitoferrin-1	SLC25A37	-3.6	-3.5	--	3	Erythrocytes maturation
	TAL1	-2.8	-1.6	--	3	

Table 2 Selection of the 50 most relevant DE genes (Continued)

T-cell acute lymphocytic leukemia protein 1							Erythrocytes differentiation- Erythrocytes maturation
Hepcidin	HEPC	2.7	2.0	--	3		Iron metabolism
Aminopeptidase n	ANPEP	2.2	7.3	-9.2	4		Protein metabolic process
Intestinal-type alkaline phosphatase 1	ALPI	--	--	-11.7	1,4		Metabolic process
Acidic mammalian chitinase	CHIA	--	--	-14.1	4		Carbohydrate metabolic process
Apolipoprotein a-iv precursor	APOA4	--	--	-6.5	4		Lipoprotein metabolic process
Gastric inhibitory polypeptide	GIP	--	--	-3.1	4		Response to nutrient levels
Cocaine- and amphetamine-regulated transcript	CART	--	--	6.7	4		Negative regulation of appetite
Gastrin cholecystokinin-like peptide	GAST-CCK	--	--	-4.4	4		Digestion
Collagen alpha-2 chain	COL1A2	-2.0	-1.5	-2.4	5		Extracellular matrix structural constituent
Tropomodulin 4	TMOD4	-5.6	-3.9	-2.3	5		Tropomyosin binding
Formin-like protein 1-like	FMNL1	-4.0	-3.0	-2.8	5		Actin cytoskeleton organization
Alpha actin	ACTA	-3.9	--	-2.7	5		Skeletal muscle fiber development

Statistically significant fold changes are shown for each organ for 50 relevant genes associated with enteromyxosis. Categories: 1) Immune and defence response; 2) Apoptosis and cell proliferation; 3) Iron metabolism and erythropoiesis; 4) Metabolism and digestive function; 5) Cytoskeleton and extracellular matrix. Non significant differences have been marked as "--".



immune-responsive gene-1, p- and e-selectin, as well as the transcription factors *AP-1* and *CEBPB*, was detected. Moreover, genes such as *LITAF*, which promotes the expression of the pro-inflammatory cytokine *TNF- α* , and *CYBB*, a superoxide-generating enzyme of phagocytes, were up-regulated in pyloric caeca but down-regulated in spleen and head kidney, respectively. Lymphoid organs, spleen and head kidney, showed a similar number of up- and down-regulated genes involved in inflammation and acute-phase response, including shared up-regulated genes like hepcidin, heat shock proteins and prostaglandin synthases. On the other hand, several genes related to B and T cells (such as those encoding immunoglobulin molecules and the T cell-related proteins *CD4*, *TCRB*, granzyme and perforin) were down-regulated in these organs. Moreover, in spleen there was a depression of two genes considered to be markers for dendritic cells, *CD83* and *CD209*, which were, conversely, up-regulated in pyloric caeca. Spleen and pyloric caeca, in turn, showed a common up-regulation of the C-type lectin *MRC1*, while other two members of this family were up-regulated, but only in spleen (*MASPI*) or in pyloric caeca (*CLEC4M*).

Noticeably, more genes related to IFNs were identified among down-regulated genes, like *Gig1*, *IFNGR1* and *IFR3* in head kidney and spleen or *GVINP1* and *IRF4* in spleen and pyloric caeca. Moreover, the *TLR9*, also involved in defence against intracellular pathogens, was down-regulated in spleen and head kidney.

Also, some regulated genes involved in Th17 cells response were detected, particularly the down-regulation of Th17 cytokines: *IL22* in head kidney and pyloric caeca and *IL17* and its receptor in pyloric caeca. In this organ, it was also remarkable the down-regulation of four genes related to anti-oxidant defence (*MRSA*, *SOD*, *GSTT1* and *TXNDC17*) and the up-regulation of several genes involved in tissue remodelling and repair (e.g. *MMP13*, *PLAT*, *FGF10*, *VNT*). Spleen and head kidney, as well, showed up-regulation of *HGF*, a cytokine acting in tissue repair but also in modulation of immune response, and of two *HGF*-related genes (*HGFR* in spleen and *HGFAC* in head kidney).

Finally, a few genes known to be induced under hypoxic and/or oxidative stress conditions were found to be up-regulated, including the angiopoietin related proteins showing an increase between 4 and 7.4 FC in the three organs, and *HIGDIA*, the adrenomedullin genes and a cytochrome c oxidase mitochondrial subunit in pyloric caeca and head kidney.

Apoptosis and cell proliferation

Apoptosis and cell proliferation DE genes were found mainly in pyloric caeca. Several genes participating in the apoptotic process, especially the caspase-3 (FC = 5.5) and cytochrome c (FC = 4.3), which are essential players

in the execution phase of apoptosis, were up-regulated. In general, in this organ we found more pro- than anti-apoptotic genes, but also other genes involved in cell proliferation, such as the *PCNA*, *FGF10* and cyclins b1 and a2, were up-regulated. In head kidney and spleen a few genes belonging to this group, like the pro-apoptotic cytochrome c in head kidney and clusterin in spleen were up-regulated.

Iron metabolism and erythropoiesis

In head kidney and spleen, the main lymphohaematopoietic organs in teleosts, we observed down-regulation of several genes related to haematopoiesis. The expression of genes involved in erythrocyte maturation and differentiation, like *TALI*, *GATA2* and mitoferrin-1, was depressed in both organs, and we also observed a dramatic decrease in the expression of genes related to oxygen transport. For example, haemoglobin subunit alpha-d and haemoglobin subunit beta-2 showed a -5.2 and a -4.7 FC, respectively, in head kidney, and a -3.5 and -3.8 in spleen. The band 3 anion transport protein gene, the major glycoprotein of the erythrocyte membrane, also suffered a notable down-regulation in head kidney (FC = -6.6) and spleen (FC = -4.6). On the other hand, two genes related to iron homeostasis, hepcidin (up-) and ferritin heavy subunit (down-), were regulated in both organs.

Metabolism and digestive function

This group of genes was analyzed in pyloric caeca to evaluate intestinal function during enteromyxosis, and were mainly down-regulated. Most of these genes showed high expression in the control sample, while its expression was practically undetectable in infected individuals. That was the case of the digestive enzymes *CHIA* (-14.1), *ALPI* (-11.7), *CYP7A1* (-9.1) or *CPO* (-6.0). Also the *FABP2* and *APOA4* genes, involved in lipid metabolism, showed very highly expression in control samples, but -4.1 and -6.5 FCs, respectively, in infected samples. Moreover, there was a depression of genes induced by food intake (*GIP*, *CCK2*, gastrin-cholecystokinin-like peptide) and of the gene coding for the galanin type I receptor, an orexigenic peptide. On the other hand, two anorexigenic genes (*CART* and *CGRP*) were up-regulated.

Cytoskeleton and extracellular matrix

Several myosin, collagen, actin, tubulin, coronin and spectrin genes, were down-regulated in the three organs. Pyloric caeca and head kidney exhibited the highest number of down-regulated genes. Of particular interest were collagen alpha-1, alpha actin and the different myosin genes, that were abundantly expressed in control samples, showing FCs ranging from -6.1 (myosin heavy chain) to -1.8 (collagen alpha-1). Likewise, the *TPM4*,

which was highly expressed in spleen and pyloric caeca of CTRL fish, was down-regulated in RCPT samples.

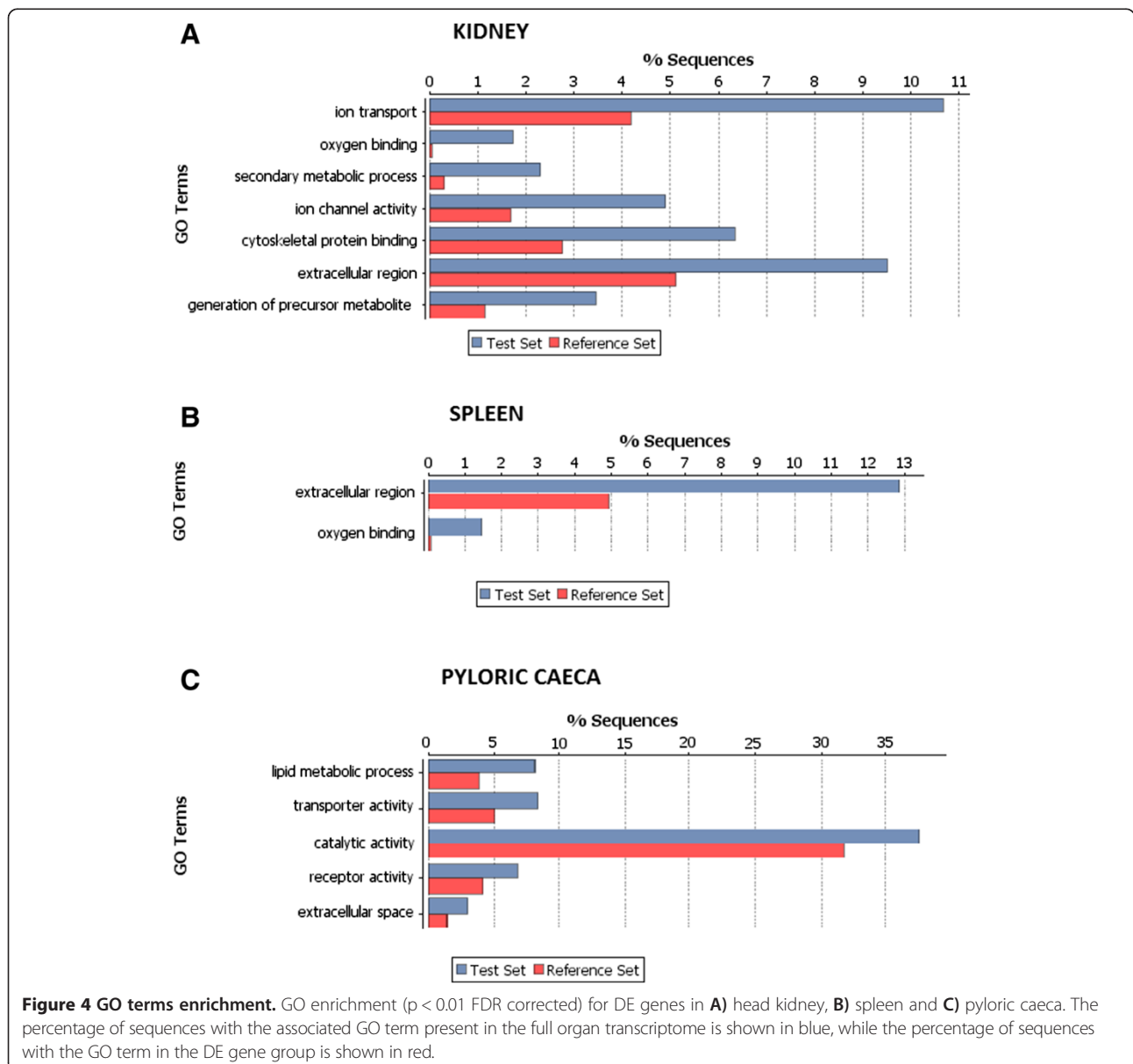
GO enrichment analysis

The full transcriptome of the three organs was annotated and GO terms for each sequence were obtained. A Fisher exact test (FDR corrected p-value = 0.05) was used to compare DE sequences with the background transcriptome to obtain the enriched GO terms for each organ (Figure 4). Oxygen binding was clearly overrepresented in both spleen and head kidney of RCPT fish, likely indicating alterations in the erythrocyte machinery, as mentioned earlier. Lipid metabolism and catalytic activity were enriched categories in pyloric caeca, which might evidence problems in the digestive function. Extracellular space or extracellular

region GO terms were present in all three organs. GO enrichment was also performed for up-regulated and down-regulated genes separately, obtaining an additional up-regulated GO category in spleen, peptidase activity, and in pyloric caeca, cell cycle.

Discussion

This is, to our knowledge, the first report of a RNA-seq transcriptomic analysis applied to the study of a fish-parasite model. We investigated turbot at an advanced enteromyxosis stage, selected on the basis of histopathological evaluation. This approach allows the analysis of fish with a more uniform health status, minimizing interindividual variation, and consequently, enabling a more consistent identification of regulated genes on a reduced number of animals.



This study advances our understanding of how the *E. scopthalmi* infection develops and the determination of the clinical signs and lesions characteristic of infection in turbot. Figure 5 depicts the cascade of events leading to severe enteromyxosis in turbot considering in particular the transcriptomic changes found in the current study.

We found far more DE genes in pyloric caeca (3022) than in either kidney or spleen (1316 and 1377, respectively). This is perhaps not that surprising since the intestine is the target tissue of *Enteromyxum spp.* infection and

the lesions caused by the disease are mostly restricted to the gastrointestinal tract. Additionally, the most characteristic clinical signs of the disease, such as weight loss and anorexia, are attributable to the alteration of the normal physiology of the digestive system. Furthermore, spleen and kidney shared 321 down-regulated genes, an interesting result which can be attributed to the common lymphohaematopoietic functions and the cellular depletion observed in both organs in late stages of the disease [8].

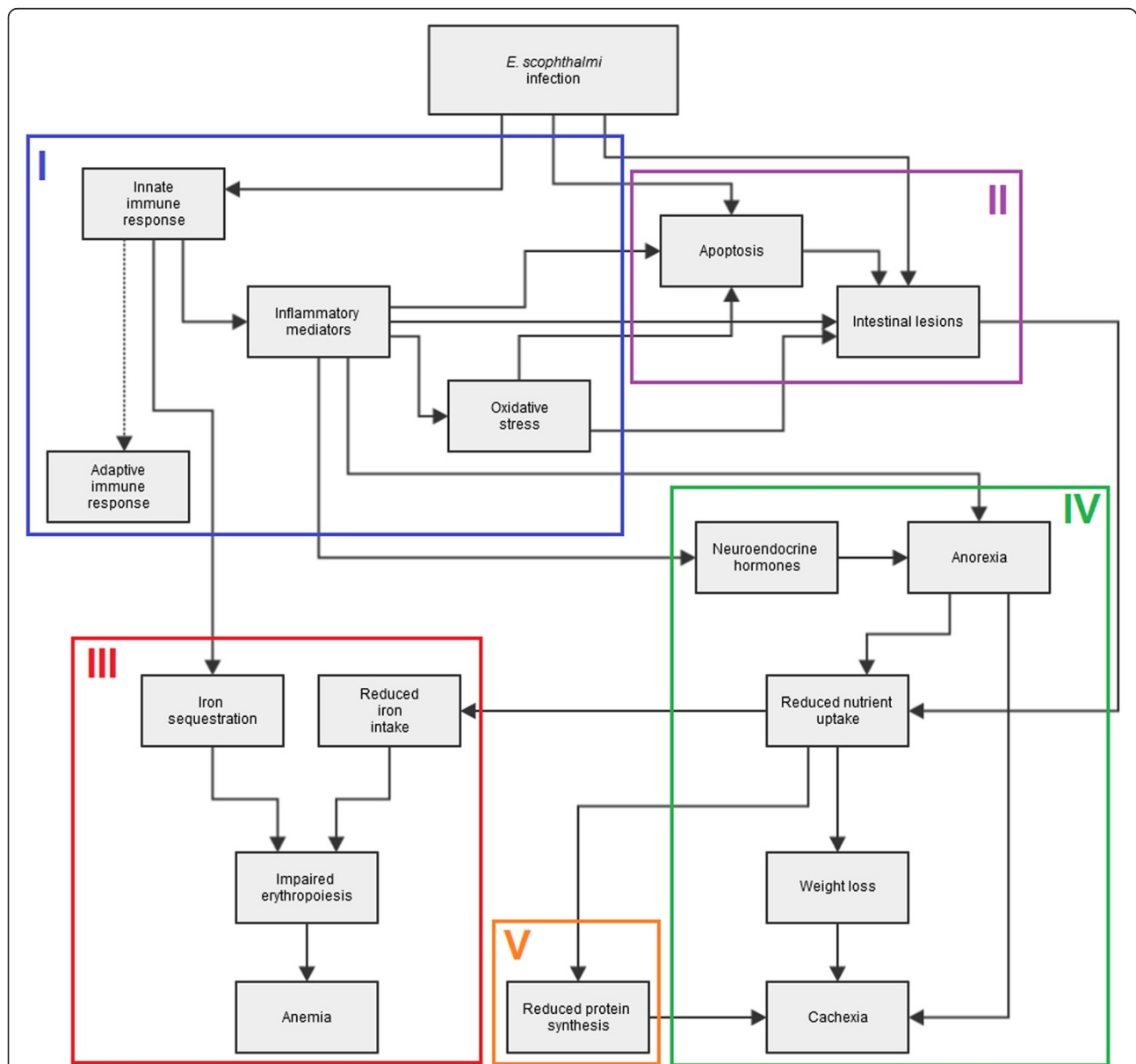


Figure 5 Enteromyxosis flowchart. Flowchart showing the main processes involved in severe turbot enteromyxosis. The flowchart has been divided in five sections according to the most representative processes occurring during *Enteromyxum* infection: I, blue, immune and defence response; II, purple, apoptosis and cell proliferation; III, red, iron metabolism and erythropoiesis; IV, green, metabolism and digestive function; V, orange, cytoskeleton and extracellular matrix.

Immune and defence response

The defence response of turbot against *E. scophthalmi* was characterized by the activation of the innate immune response, but it seems that different elements acting in bridging innate and adaptive response are failing, and an inadequate onset of the adaptive immune response was noticed. The transcriptomic changes detected were especially intense in pyloric caeca, corresponding, and likely contributing, to the severe histological changes observed at tissue level.

Numerous regulated genes belonging to immune and defence response were found in the three organs analyzed. The number of up-regulated genes in pyloric caeca far exceeded the down-regulated ones, while this is not observed in kidney and spleen. Among the three DE genes related to the innate immune response shared by the three organs (*ALOXE3*, *IL4I1* and *MASP3b*), the overexpression of *MASP3b*, which mediates the activation of the complement lectin pathway, is of particular interest [28-30]. This is also the function of *MASP1*, overexpressed in spleen. The complement lectin pathway is considered the most ancient route of complement activation [31,32], with a well-demonstrated role in several parasitic diseases [33-36]. Interestingly, the third component of the complement system, C3, which plays a central role supporting the activation of the three complement pathways [37] was up-regulated in head kidney and pyloric caeca, but down-regulated in spleen. This could be related to the changes also observed in components of the classical pathway (overexpression of C1q receptor in spleen and pyloric caeca, but depression of C1q-like protein 4 and protein 2 in pyloric caeca), probably as a rebound effect after a previous increase, or due to a progressive exhaustion of the complement system, hypothesized in late stages of enteromyxosis in turbot and gilthead sea bream [10,17,38].

The overexpression of *MASP3b* in the three organs suggests the involvement of lectin complement pathway in the immune response and of C-type lectins as pattern recognition receptors (PRRs) for *E. scophthalmi*. The latter would be also confirmed by the regulation of three genes encoding this type of lectins: *MRC1*, up-regulated in spleen and pyloric caeca; *CLEC4M* up-regulated in pyloric caeca and *CD209*, up-regulated in pyloric caeca and down-regulated in spleen. These results support the hypothesis on *E. scophthalmi* recognition by turbot advanced in previous studies, which investigated the presence of carbohydrate terminals in the parasite [13] and the effect of lectins on the attachment and invasion of intestinal epithelium [14].

C-type lectins receptors located on antigen-presenting cells play a major role in pathogen recognition and induction of immune response [39,40], and *CD209*, in particular, is considered a marker for dendritic cells

[41], key linkers between innate and adaptive immunity. Additionally, our study revealed the same expression pattern (up-regulation in pyloric caeca and down-regulation in spleen) of another dendritic cell marker, *CD83*. The presence and function of these cells in teleosts is largely unknown [42] and our findings provide additional evidence of their involvement in disease response in turbot [43]. The down-regulation of these genes in a main antigen-processing organ, like the spleen in teleost [44], together with previous observations [10,11,45] and other findings of this work, suggests that there might be a failure in the connection between innate and adaptive immune response during turbot enteromyxosis.

On this regard, it was remarkable to observe the down-regulation of several IFN-related genes in the three organs. Several type I IFN-induced genes and type II IFN receptors were depressed, and *PRDM1a*, a repressor of type II IFN [46], showed a five-fold increase in pyloric caeca. Interferons play a major role in signalling between innate and adaptive immune response [47,48], and there are multiple lines of evidence that suggest their involvement in anti-parasitic response and resistance [17,49,50]. Notably, head kidney and spleen showed down-regulation of *TLR9*, a PRR which induces the expression of type I interferon via the action *IFR3* and *IFR7* (likewise down-regulated in these organs), and enhances MHC-I antigen (down-regulated in all organs) cross processing [50]. Although depression of MHC-I, IFNs and *TLR9* genes is commonly associated with immune system evasion by viruses [51-54], the importance of this mechanism in parasite infections is becoming increasingly evident [55-57]. In teleost, Young *et al.* [58] established the connection between the coordinated down-regulation of MHC-I and IFN-related genes in amoebic gill disease-affected Atlantic salmon and the inhibition of acquired immunity development and high susceptibility of this species to the disease. On the other hand, in gilthead sea bream chronically exposed to *E. leei*, IFNs and IFN-stimulated genes were hypothesized as markers for pathogen resistance due to their up-regulation in exposed but not parasitized fish [17].

Interestingly, our RNA-seq analysis also found a down-regulation of *IL22* and *IL17* that could reflect a decrease of their major producers, Th17 cells. Besides, *SOSCS3*, an inhibitor of *IL17* expression, was up-regulated in spleen. Th17 cells also coordinate innate and adaptive immune response [59] and are described as critical for mucosal and epithelial host defence against extracellular pathogens [60]. The balance between the protective and harmful effects of Th17 cells through cytokines *IL17* and *IL22* is extremely delicate and there are reports supporting their contribution to host defence and others highlighting their inflammatory damage when the infection persists over time [60-63]. A deeper understanding of the genes

underlying the activation or depression of the different T helper subsets responses is considered of great significance for resistance and tolerance of livestock species [64].

Nowadays, it is becoming evident that in a specific adaptive response is essential to deal with infection and to acquire resistance in teleost [45,58,65]. However these data points towards a possible failure or slowness in the activation of the adaptive response, as previously suggested for turbot enteromyxosis based on the evidence of delayed or even undetectable production of specific antibodies against *E. scophthalmi* by turbot [10,45].

In this work, we found several down-regulated genes related to B and T cell activity in lymphohaematopoietic organs, also in accordance with previous work describing lymphocyte depletion, reduced Ig+ cells and marked lymphohaematopoietic depletion in spleen and head kidney of turbot in advanced stages of the disease [8,10,11]. Globally, spleen and head kidney showed a depression of genes related to acquired immune response, which may reflect the incapability of the immune system to stop the infection. On the other hand, several immunoglobulin-related genes were up-regulated in pyloric caeca, which is consistent with the results of Bermúdez *et al.* [11], who found a progressive increase in IgM⁺ cells in the intestine of *E. scophthalmi*-infected turbot, reaching the maximum at 78 days post-exposure, suggesting that it may reflect a local reaction against the parasite. The importance of the local immune response has been recently highlighted for *E. leei*-infected gilthead sea bream [18], where significant changes in the expression of interleukins (ILs) and IL receptors were found in the intestine but not in head kidney nor in spleen of infected fish. In this organ, a switch from an early pro-inflammatory IL expression profile to an anti-inflammatory pattern in later stages of disease was also reported.

In our study, a remarkable number of up-regulated genes involved in immune and defence response were found in pyloric caeca, including several innate immune components involved in promoting the inflammatory reaction, which does not seem to be in a resolution phase. Also, intestinal-type alkaline phosphatase, an essential enzyme in controlling gut microflora and maintaining epithelial integrity, showed a -11.7 FC in infected turbot. The role of this enzyme in preventing intestinal inflammation has been demonstrated in zebrafish [66] and there is evidence of the beneficial effect of its administration in conditions of severe intestinal epithelial damage [67,68]. This supports the hypothesis of an exacerbated local immune response of turbot against the parasite and its products [12,15], which can explain the development of the observed lesions. The prolonged inflammation of pyloric caeca is likely to create an oxidative environment at the intestinal level, and the action of the inflammatory mediators and the oxidative stress can be

responsible for the desquamation of the intestinal epithelial lining, typical of the disease in turbot, as seen in other conditions characterized by an exacerbated immune response [69-72]. In this context, beyond the up-regulation of two genes related to oxidative stress response (calcipressin 1 and adrenomedullin 5), the antioxidant defences appear to be failing, as revealed by the depression of the antioxidants SOD, CAT, MASRA, GSTT1 and TXNDC17. In chronic *E. leei*-infected gilthead sea bream, Davey *et al.* [17] found several genes encoding antioxidant enzymes up-regulated in response to the high reactive oxygen species production, so the opposite pattern reported here could also be one of the factors contributing to the higher susceptibility of turbot to enteromyxosis.

Apoptosis and cell proliferation

Apoptosis is an essential biological process induced in response to many extrinsic stimuli (like inflammatory reaction and oxidative stress) and it can be considered as part of the host innate immune response during infection but also, in some cases, as an infection-associated immunopathology [73-76]. The ability of pathogen microorganisms, including intestinal parasites, to modulate apoptosis in their hosts has been widely documented [73,77,78]. We observed several DE genes related to apoptotic cell death in pyloric caeca of infected fish, including a considerable up-regulation of caspase-3. This is in accordance with previous histological observations describing increased number of cells with apoptotic features [8] and with the increase of active caspase-3 occurring in both lining epithelium and lamina propria of turbot intestine during enteromyxosis [16]. It has been suggested that this could be a mechanism used by the parasite to spread [8], though the observations of apoptotic cells between the inflammatory infiltrates of lamina propria have also been related to a strategy for immune evasion [16]. Our data also suggests that this process plays a prominent role in the pathogenesis of turbot enteromyxosis.

The up-regulation of some anti-apoptotic or apoptosis-induced genes (apoptosis inhibitor 5, *TNFRSF11B* and *HIGDIA*) and depression of some pro-apoptotic genes (*TRAIL* and *DEDD2*) was also detected at intestinal level, suggesting that complex adjustments in apoptotic signals may occur during enteromyxosis, as reported for *E. leei* [17]. These findings may be related to different requirements of the parasite to induce or inhibit apoptosis depending on the developmental stage, as hypothesized for human cryptosporidiosis [78]. Another possible explanation is that these genes may be counterbalancing the effects of the exacerbated immune response, also consistent with the activation of some tissue repair (up-regulation of *MMP13*, *PLAT* and *FGF10*) and cell proliferation (*PCNA* and cyclins) related genes observed in this organ.

Apoptotic cell death has also been involved in the lymphohaematopoietic depletion observed in infected turbot, either directly on cell components of these organs or indirectly as a result of the increment of leukocyte apoptosis in the intestine [8,16]. In the current study, very few genes related to apoptosis are differently expressed in head kidney and spleen, displaying a substantial balance between cell death/survival signals. Concerning cell proliferation, the up-regulation in both organs of *HGF*, a pleiotropic cytokine that plays a major role in tissue regeneration, but also with potent anti-inflammatory properties, is a relevant observation, as it is involved in interfering the function of dendritic cells and CD4⁺ and CD8⁺ T cells [79-81]. Our results showed that CD4 and the dendritic cell markers (CD83, CD209) are down-regulated in spleen. Furthermore, *HGF* affects CD8⁺ cytotoxic cells by down-regulating IFN-gamma, granzyme and perforin [81], consistent with our results in head-kidney. The role of *HGF* in teleost is largely unknown, and in this case its activation may be an attempt to counterbalance the loss of cell population or to modulate the deleterious effects of an exacerbated immune response. These considerations need further research, in particular by focusing on the events occurring at earlier stages of the disease regarding cell-mediated immune response and the activation of interferon pathways at the site of infection as well as in lymphoid organs. In addition, more information about the changes in cell death/proliferation balance along the course of the disease will help to clarify the role of apoptosis in lymphoid depletion, and the conflict between host and parasite induced functions.

Iron metabolism and erythropoiesis

Oxygen binding seems to be altered in both spleen and head kidney as shown by the gene-enrichment analysis performed, which strongly support alterations in the erythrocyte function and haemoglobin production. Both spleen and head kidney showed up-regulation of hepcidin, a peptidic hormone initially known by its antimicrobial activity, but later recognized as the principal regulator of iron homeostasis [82-84]. It acts as acute-phase protein to induce iron sequestration during infections and is considered the main gene responsible for the so called "anaemia of chronic disease" or "anaemia of infection" [82,85]. Hepcidin determines a decreased absorption of iron in the intestine and sequestration of iron in macrophages, so limiting its availability for haemoglobin synthesis in maturing erythrocytes [82,86]. RNA-seq analysis showed that in the lymphohaematopoietic organs several genes related to haemoglobin and erythrocytes maturation are markedly down-regulated as well as ferritin, the main iron-storage protein. This group of genes is tightly clustered in the heatmap (Figure 3), revealing

a strong common regulation. The depression of this group of genes can explain the decrease in hematocrit and haemoglobin values seen in *Enteromyxum*-infected fish [6] and the activation of genes related to the response to hypoxia found in this study (*HIGDIA*, cytochrome c oxidase and angiopoietin-related). The reduction in iron availability, however, may be explained both by the infection-related iron sequestration and the probable restricted iron intake by diet, due to the anorexia and the impaired intestinal absorptive function shown by fish suffering enteromyxosis [6,87].

Metabolism and digestive function

Enteromyxum-infected turbot have significantly lower weight and poorer condition at advanced stages of the disease [10], which is likely due to the reduction of food intake due to anorexia and intestinal damage [7,8]. Effects of starvation have been shown to affect blood as well as immune function, besides the expected alterations in nutrient metabolism [88-90], as observed for the enriched GO category "lipid metabolism" in pyloric caeca in our study. Actually, in infected turbot we have found a remarkable decrease in the expression of several digestive enzymes in this organ, probably related to a general loss of the intestinal function as recently reported in cunner (*Tautoglabrus adspersus*, Walbaum) subjected to acute or long-term fasting [91].

Moreover, we observed changes in the expression of genes that encode for peptide hormones, which act in feeding behaviour. Gastrin cholecystokinin-like peptide and its related receptor *CCK2*, *GIP* and galanin receptor 1, were all down-regulated. Gastrin and cholecystokinin are structurally and functionally related hormones that act in response to food intake to stimulate different digestion processes. Similarly, gastric inhibitory polypeptide belongs to the incretin family of gastrointestinal hormones whose main function is to induce insulin secretion in response to the increase in the glucose blood level after food ingestion. The depression of these genes can be explained by the overall reduction of digestive function caused by food deprivation, as postulated by Hayes & Volkoff [91] for cholecystokinin decreased expression seen in fasting cunner. On the other hand, galanin is an orexigenic hormone and its decrease can be related to the parallel increase of the anorexigenic *CART* and *CGRP*.

Anorexia is a quite common clinical sign observed in parasitic infection but the causes and significance that underlie this behaviour, despite being investigated for many years, are still controversial [92-94]. In *E. leei*-infected gilthead sea bream, Estensoro et al. [87] found evidence that anorexia is the main cause of body mass loss, hypothesizing the involvement of cachectic cytokines, gastrointestinal peptides and growth factors in the voluntary reduction of food intake. The

results of our study are consistent with these considerations, although further investigation of the mechanisms underlying anorexia in enteromyxosis should be addressed.

Cytoskeleton and extracellular matrix

RNA-Seq analysis revealed that the three studied organs shared common depression of numerous genes encoding cytoskeletal and structural proteins. Protein synthesis is an energy-demanding process and can be affected by the detrimental effects of a prolonged reduction in food intake, further exacerbated if it is associated with impaired intestinal absorption [95,96]. These changes can therefore be considered as indicative of a progressive overall tissue wasting which leads to the lethal outcome of turbot enteromyxosis.

Conclusions

This is the first application of RNA-seq technology to the study of turbot transcriptomic response and particularly to the analysis of *E. scophthalmi* infection. This experiment has greatly enriched our knowledge on the major turbot biological processes and responses against this disease. The results obtained point towards the presence of an exacerbated local immune response associated with an inadequate activation of the adaptive immunity, probably related to the failure of some components acting in bridging innate and adaptive immune response. Additionally, the involvement of C-type lectins as PRR for the parasite and of apoptosis in the pathogenic mechanism is highly plausible. The transcriptomic analysis has also revealed details on the genetic basis underlying the characteristic clinical signs and lesions associated with the progression of this disease, like cachexia and anaemia. This knowledge is essential to investigate the pathogenetic mechanisms and the differences in species-specific susceptibility to enteromyxosis with the aim of identifying resistance-related genes. This information will be useful for the derivation of new therapeutic treatments and to exploit genetic variation associated with these key genes in order to achieve more resistant broodstock through breeding programmes. Further analyses should focus on transcriptomic changes at earlier stages of the disease and on comparative studies with other affected species.

Methods

Experimental design and animal sampling

Turbot (150 g mean weight) were obtained from an *E. scophthalmi*-free farm in northwestern Spain and kept in the facilities of the Instituto de Acuicultura de Torre la Sal (IATS, Cabanes, Castellón, Spain). Animals were divided into 55 RCPT and 65 CTRL fish, and were acclimated for two weeks under identical conditions

before starting the trial in two 500 L tanks per group with 5 µm-filtered and UV-irradiated open flow sea water (37.5‰ salinity) at $19 \pm 1^\circ\text{C}$.

The experimental infection was carried out by oral route, as described by Redondo *et al.* [97]. Briefly, RCPT fish received 1 ml of intestinal scraping homogenates in Hank's Balanced Salt Solution (HBSS) from 20 donor fish, containing *E. scophthalmi* live parasites, whereas CTRL fish were inoculated with the same amount of HBSS alone. Donor turbot came from an experimentally infected stock maintained at IATS.

Fifteen RCPT and 10 CTRL fish were sampled at 7, 24 and 42 days post-inoculation (DPI) in order to obtain a representative time-course that included different levels of infection for analysis. At each sampling point, fish were euthanized under benzocaine anaesthesia (3-aminobenzoic acid ethyl ester, 100 mg/ml) (Sigma, St. Louis, MO, USA) and necropsied to obtain samples from head kidney, spleen and digestive tract.

The experiment was carried out in accordance with national (Royal Decree RD1201/2005, for the protection of animals used in scientific experiments) and institutional regulations (CSIC, IATS Review Board). Animals were treated according to the Directive 2010/63/UE of the European Parliament and of the Council of 22 September 2010 on the protection of animals used for experimentation and other scientific purposes. All experimental protocols were approved by the Institutional Animal Care and Use Committee of the University of Santiago de Compostela (Spain).

Histopathology

Tissue samples were fixed in Bouin's fluid at 4°C for 12 hours and then stored in 70% ethanol until being processed for paraffin-embedding. Thin sections (3 µm) were stained with H&E and toluidine blue for microscopic evaluation. The healthy status of CTRL fish was confirmed while RCPT fish showed a variable level of infection irrespective of the day of sampling, suggesting different resistance to the parasite or variation associated to the infection protocol. Consequently, fish were classified according to the lesional degree in three groups (slight, moderate and severe), as described by Bermúdez *et al.* [8].

RNA extraction and sample preparation for RNA-seq

Samples from the three organs (head kidney, spleen and pyloric caeca) were collected in cold RNeasy lysis buffer (Qiagen), kept at 4°C overnight and then transferred to -20°C . RNA extraction was performed using the RNeasy mini kit (Qiagen) with DNase treatment following manufacturer's instructions. RNA quality and quantity were evaluated in a Bioanalyzer (Biosciences Resource Center) and in a NanoDrop® ND-1000 spectrophotometer (NanoDrop® Technologies

Inc), respectively. Prior to sequencing, RNA aliquots from three CTRL fish were pooled by organ, while samples from three RCPT fish were analyzed individually, resulting in three RCPT and one CTRL sample per organ. The three RCPT fish were chosen among those fish graded as severely infected in histopathology assessment and were collected at the same time, thus, both RCPT and CTRL fish belonged to the 42 DPI sampling point.

The 12 samples were barcoded and prepared for sequencing by the Wellcome Trust Centre for Human Genetics, Oxford, using standard protocols. Sequencing was conducted on an Illumina HiSeq 2000 as 100 bp paired-end reads.

The quality of the sequencing output was assessed using FastQC (<http://www.bioinformatics.babraham.ac.uk/projects/fastqc/>; version 0.10.1). Quality filtering and removal of residual adaptor sequences was conducted on read pairs using Trimmomatic [98] (version 0.30). Specifically, residual Illumina specific adaptors were clipped from the reads, leading and trailing bases with a Phred score less than 4 were removed and the read trimmed if a sliding window average Phred score over four bases was less than 15. Only reads where both pairs had a length greater than 36 bp post-filtering were retained, leaving on average more than 15 million mappable paired-end reads per sample.

The recently assembled turbot genome (Figueras *et al.*, unpublished data), was used as a reference for read mapping. The genome consists of 16,493 scaffolds with an N50 of 4,268,014 bp and N90 of 462,971 bp. Filtered reads were mapped to the genome using Tophat2 [99] (version 2.09) that leverages the short read aligner Bowtie2 [100] (version 2.1.0) with a maximum intron length of 10 kb. HTSeq-count (<http://www-huber.embl.de/users/anders/HTSeq/doc/overview.html>) was used to extract the raw reads from the mapping files.

To account for differences in the mass composition of the RNA-Seq samples, we conducted trimmed mean of M-values (tmm) normalisation of expression values using EdgeR [101] for each organ. Differential expression between infected and control samples was calculated using EdgeR and resulting *P*-values corrected for false discovery rate (FDR). DE genes were defined as showing an FDR corrected *P*-value < 0.05, a log₂ fold FC > 1 and a minimum length of 200 bp. The DE genes were identified and annotated using Blast2GO (version 2.7.0) with an E-value cutoff of E⁻⁶. Enriched GO terms for each tissue were identified by comparing the DE genes against the full turbot transcriptome using Blast2GO Fisher's exact test (*p* < 0.05, FDR corrected). The correct classification of the samples as either infected treatments (clustering together) or uninfected controls (as outgroups) was confirmed with hierarchical

clustering implemented in the R package "pvclust" [102], using complete Euclidean distance with 1000 bootstrap replicates.

The data discussed in this publication have been deposited in NCBI's Gene Expression Omnibus [103] and are accessible through GEO Series accession number GSE63911 (<http://www.ncbi.nlm.nih.gov/geo/query/acc.cgi?acc=GSE63911>).

List of gene symbols

IL4I1: L-amino-acid-oxidase; *ALOXE3*: epidermis-type lipoxygenase 3; *MASP3b*: mannose-binding lectin-associated serine protease-3b; *IRF 3, 4, 7*: interferon regulatory factor; *Gig2*: grass carp reovirus-induced gene 2; *IFIT-1*: interferon-induced protein with tetratricopeptide repeats 1; *cHERC5*: e3 isg15-protein ligase herc5; *IFI44*: interferon-induced protein 4; *CAT*: catalase; *FMNL1*: formin-like protein 1; *TMOD4*: tropomodulin 4; *GRXCRI*: Glutaredoxin domain-containing cysteine-rich protein 1; *SNPH*: syntaphilin-like isoform x1; *COLIA2*: collagen alpha-2 chain; *KCNN3*: small conductance calcium-activated potassium channel protein 3-like; *EGR*: early growth response; *TNFRSF10b*: tumor necrosis factor receptor superfamily, member 10b; *G-CSFR*: granulocyte colony-stimulating factor receptor; *AP-1*: transcription factor ap-1; *CEBPB*: ccaat enhancer-binding protein beta; *LITAF*: lipopolysaccharide-induced tumor necrosis factor-alpha factor; *CYBB*: cytochrome b-245 heavy chain; *TNF-α*: tumor necrosis factor-alpha; *TCRB*: t-cell receptor beta chain; *MRC1*: macrophage mannose receptor 1; *MASPI*: mannan-binding lectin serine protease 1; *CLEC4M*: C-type lectin domain family 4, member M; *Gig1*: grass carp reovirus-induced gene 1; *IFNGRI*: interferon gamma receptor alpha chain; *GVINP1*: interferon-induced very large gtpase 1; *TLR9*: toll-like receptor 9; *IL 22, 17*: interleukin; *MRSA*: peptide methionine sulfoxide reductase; *SOD*: superoxide dismutase; *GSTT1*: glutathione s-transferase theta-1; *TXNDC17*: thioredoxin domain-containing protein 17; *MMP13*: collagenase 3; *PLAT*: tissue-type plasminogen activator; *FGF10*: fibroblast growth factor 10, *VNT*: vitronectin; *HGF*: hepatocyte growth factor; *HGFR*: hepatocyte growth factor receptor; *HGFAC*: hepatocyte growth factor activator; *HIGD1A*: hig1 domain family member 1a; *PCNA*: proliferating cell nuclear antigen; *TALI*: t-cell acute lymphocytic leukemia protein 1; *GATA2*: gata-binding factor 2; *TPM4*: tropomyosin alpha-4 chain; *GIP*: gastric inhibitory polypeptide; *CCK2*: cholecystokinin B receptor; *CART*: cocaine- and amphetamine-regulated transcript; *CGRP*: calcitonin gene-related peptide; *PRDM1a*: PR domain containing 1a, with ZNF domain; *SOSCS3*: suppressor of cytokine signalling 3; *TNFRSF11B*: tumor necrosis factor receptor superfamily, member 11b; *TRAIL*: TNF-related apoptosis-inducing ligand; *DEDD2*: DNA-binding death effector domain-containing protein 2.

Additional files

Additional file 1: Table S1. List of shared differentially expressed genes between the three organs. Common differentially expressed genes between kidney, spleen and pyloric caeca. Fold change by tissue, fragments per kilobase of exon per million fragments mapped (FPKM) in control and infected samples by tissue and GO terms for each gene are shown.

Additional file 2: Table S2. List of differentially expressed genes in head kidney. Differentially expressed genes in kidney. Fold change, fragments per kilobase of exon per million fragments mapped (FPKM) in control and infected samples and associated functional group for each gene are shown.

Additional file 3: Table S3. List of differentially expressed genes in spleen. Differentially expressed genes in spleen. Fold change, fragments per kilobase of exon per million fragments mapped (FPKM) in control and infected samples and associated functional group for each gene are shown.

Additional file 4: Table S4. List of differentially expressed genes in pyloric caeca. Differentially expressed genes in pyloric caeca. Fold change, fragments per kilobase of exon per million fragments mapped (FPKM) in control and infected samples and associated functional group for each gene are shown.

Competing interests

The authors declare that they have no competing interests.

Authors' contributions

PM and MIQ led and supervised the study. MIQ, RB, BGP, PM, ASB and MJR were involved in the experimental infection design. ASB and MJR performed the experimental infection and sampling. APL, RB, MIQ and PR carried out the histopathological examination. BGP, RB, PR, PM and MIQ conceived and designed the RNA-seq assay. DR and PWH carried out the sequencing, transcriptomic analyses and bioinformatic work. DR and PR analyzed the data and wrote the manuscript. DR and PR contributed equally to this article so they share the first authorship. All the authors edited, read and approved the manuscript.

Acknowledgments

The authors would like to thank María del Carmen Carreira and Lucía Insa for technical assistance and María E. Alonso-Naveiro for assistance with the infection trial. Also, we would like to acknowledge the support given by Professor Judith Mank and the use of the UCL Legion High Performance Computing Facility (Legion@UCL), and associated support services, in the completion of this work. PR was supported by a predoctoral contract from the Universidad de Santiago de Compostela. This work was funded by the Spanish Ministry of Science and Innovation through the projects AGL2009-13282-C02-01 and -02.

Author details

¹Departamento de Genética, Facultad de Biología (CIBUS), Universidad de Santiago de Compostela, Santiago de Compostela 15782, Spain. ²Departamento de Ciencias Clínicas Veterinarias, Facultad de Veterinaria, Universidad de Santiago de Compostela, Lugo 27002, Spain. ³Department of Genetics, Evolution and Environment, University College London, London, UK. ⁴Departamento de Anatomía y Producción Animal, Facultad de Veterinaria, Universidad de Santiago de Compostela, Lugo 27002, Spain. ⁵Departamento de Genética, Facultad de Veterinaria, Universidad de Santiago de Compostela, Lugo 27002, Spain. ⁶Instituto de Acuicultura Torre de la Sal (IATS-CSIC), Ribera de Cabanes, Castellón 12595, Spain.

Received: 20 May 2014 Accepted: 16 December 2014

Published: 19 December 2014

References

1. La Acuicultura en España 2013. <http://www.apromar.es/content/informes-anauales>.
2. Ribas L, Pardo BG, Fernández C, Álvarez-Dios JA, Gómez-Tato A, Quiroga MI, Planas JV, Sitjà-Bobadilla A, Martínez P, Piferrer F: **A combined strategy**

- involving Sanger and 454 pyrosequencing increases genomic resources to aid in the management of reproduction, disease control and genetic selection in the turbot (*Scophthalmus maximus*). *BMC Genomics* 2013, **14**:180.
3. Hermida M, Bouza C, Fernández C, Sciara AA, Rodríguez-Ramilo ST, Fernández J, Martínez P: **Compilation of mapping resources in turbot (*Scophthalmus maximus*): a new integrated consensus genetic map.** *Aquaculture* 2013, **414-415**:19-25.
 4. Losada AP: **"Enteromixosis del rodaballo. Esclarecimiento de mecanismos patogénicos y rutas de respuesta inmunitaria".** In *PhD thesis*: Universidad de Santiago de Compostela, Departamento de Ciencias Clínica Veterinarias. Santiago de Compostela; 2013.
 5. Zhi-Hui H, Ai-Jun M, Xin-An W, Ji-Lin L: **The interaction of temperature, salinity and body weight on growth rate and feed conversion rate in turbot (*Scophthalmus maximus*).** *Aquaculture*, in press.
 6. Sitjà-Bobadilla A, Palenzuela O: **Enteromyxum Species.** In *Fish Parasites: Pathobiology and Protection*. Edited by Woo PTK, Buchmann K. UK: CAB International; 2012:163-76.
 7. Branson E, Riaza A, Álvarez-Pellitero P: **Myxosporean infection causing intestinal disease in farmed turbot, *Scophthalmus maximus* (L.), (Teleostei: Scophthalmidae).** *J Fish Dis* 1999, **22**(5):395-9.
 8. Bermúdez R, Losada AP, Vázquez S, Redondo MJ, Álvarez-Pellitero P, Quiroga MI: **Light and electron microscopic studies on turbot *Psetta maxima* infected with *Enteromyxum scophthalmi*: histopathology of turbot enteromyxosis.** *Dis Aquat Organ* 2010, **89**(3):209-21.
 9. Palenzuela O, López Grandal E, Zarza C, Álvarez-Pellitero P: **Treatment of turbot enteromyxosis with antiparasitic drugs and bioactive natural extracts-supplemented feeds.** In *14th International Conference of the European Association of Fish Pathologists (EAFP) on Diseases of Fish and Shellfish: 2009; Prague, Czech Republic*; 2009:142-3.
 10. Sitjà-Bobadilla A, Redondo MJ, Bermúdez R, Palenzuela O, Ferreiro I, Riaza A, Quiroga I, Nieto JM, Álvarez-Pellitero P: **Innate and adaptive immune responses of turbot, *Scophthalmus maximus* (L.), following experimental infection with *Enteromyxum scophthalmi* (Myxozoa: Myxozoa).** *Fish Shellfish Immunol* 2006, **21**(5):485-500.
 11. Bermúdez R, Vigliano F, Marcaccini A, Sitjà-Bobadilla A, Quiroga MI, Nieto JM: **Response of Ig-positive cells to *Enteromyxum scophthalmi* (Myxozoa) experimental infection in turbot, *Scophthalmus maximus* (L.): a histopathological and immunohistochemical study.** *Fish Shellfish Immunol* 2006, **21**(5):501-12.
 12. Bermúdez R, Vigliano F, Quiroga MI, Nieto JM, Bosi G, Domeneghini C: **Immunohistochemical study on the neuroendocrine system of the digestive tract of turbot, *Scophthalmus maximus* (L.), infected by *Enteromyxum scophthalmi* (Myxozoa).** *Fish Shellfish Immunol* 2007, **22**(3):252-63.
 13. Redondo MJ, Cortadellas N, Palenzuela O, Álvarez-Pellitero P: **Detection of carbohydrate terminals in the enteric parasite *Enteromyxum scophthalmi* (Myxozoa) and possible interactions with its fish host *Psetta maxima*.** *Parasitol Res* 2008, **102**(6):1257-67.
 14. Redondo MJ, Álvarez-Pellitero P: **The effect of lectins on the attachment and invasion of *Enteromyxum scophthalmi* (Myxozoa) in turbot (*Psetta maxima* L.) intestinal epithelium in vitro.** *Exp Parasitol* 2010, **126**(4):577-81.
 15. Losada AP, Bermúdez R, Faílde LD, Quiroga MI: **Quantitative and qualitative evaluation of iNOS expression in turbot (*Psetta maxima*) infected with *Enteromyxum scophthalmi*.** *Fish Shellfish Immunol* 2012, **32**(2):243-8.
 16. Losada AP, Bermúdez R, Faílde LD, de Ocenda MVR, Quiroga MI: **Study of the distribution of active caspase-3-positive cells in turbot, *Scophthalmus maximus* (L.), enteromyxosis.** *J Fish Dis* 2014, **37**(1):21-32.
 17. Davey GC, Caldudch-Giner JA, Houeix B, Talbot A, Sitjà-Bobadilla A, Prunet P, Pérez-Sánchez J, Cairns MT: **Molecular profiling of the gilthead sea bream (*Sparus aurata* L.) response to chronic exposure to the myxosporean parasite *Enteromyxum lei*.** *Mol Immunol* 2011, **48**(15-16):2102-12.
 18. Pérez-Cordón G, Estensoro I, Benedito-Palos L, Caldudch-Giner JA, Sitjà-Bobadilla A, Pérez-Sánchez J: **Interleukin gene expression is strongly modulated at the local level in a fish-parasite model.** *Fish Shellfish Immunol* 2014, **37**(2):201-8.
 19. Qian X, Ba Y, Zhuang Q, Zhong G: **RNA-Seq technology and its application in fish transcriptomics.** *Omics* 2014, **18**(2):98-110.
 20. Millán A, Gómez-Tato A, Pardo B, Fernández C, Bouza C, Vera M, Álvarez-Dios J, Cabaleiro S, Lamas J, Lemos M, Martínez P: **Gene expression profiles of the spleen, liver, and head kidney in Turbot (*Scophthalmus***

- maximus*) along the infection process with *Aeromonas salmonicida* using an immune-enriched oligo-microarray. *Mar Biotechnol* 2011, **13**(6):1099–114.
21. Pardo BG, Millán A, Gómez-Tato A, Fernández C, Bouza C, Álvarez-Díos JA, Cabaleiro S, Lamas J, Leiro JM, Martínez P: **Gene expression profiles of spleen, liver, and head kidney in turbot (*Scophthalmus maximus*) along the infection process with *Philasterides dicentrarchi* using an immune-enriched oligo-microarray.** *Mar Biotechnol* 2012, **14**(5):570–82.
 22. Rodríguez-Ramilo ST, Fernández J, Toro MA, Bouza C, Hermida M, Fernández C, Pardo BG, Cabaleiro S, Martínez P: **Uncovering QTL for resistance and survival time to *Philasterides dicentrarchi* in turbot (*Scophthalmus maximus*).** *Anim Genet* 2013, **44**(2):149–57.
 23. Marioni JC, Mason CE, Mane SM, Stephens M, Gilad Y: **RNA-seq: an assessment of technical reproducibility and comparison with gene expression arrays.** *Genome Res* 2008, **18**(9):1509–17.
 24. Morozova O, Hirst M, Marra MA: **Applications of new sequencing technologies for transcriptome analysis.** *Annu Rev Genom Hum G* 2009, **10**(1):135–51.
 25. Nielsen R, Paul JS, Albrechten A, Song YS: **Genotype and SNP calling from next-generation sequencing data.** *Nat Rev Genet* 2011, **12**(6):443–51.
 26. Wang Z, Gerstein M, Snyder M: **RNA-Seq: a revolutionary tool for transcriptomics.** *Nat Rev Genet* 2009, **10**(1):57–63.
 27. Redondo MJ, Palenzuela O, Álvarez-Pellitero P: **Studies on transmission and life cycle of *Enteromyxum scophthalmi* (Myxozoa), an enteric parasite of turbot *Scophthalmus maximus*.** *Folia Parasit* 2004, **51**(2–3):188–98.
 28. Dahl MR, Thiel S, Matsushita M, Fujita T, Willis AC, Christensen T, Vorup-Jensen T, Jensen JC: **MASP-3 and its association with distinct complexes of the mannan-binding lectin complement activation pathway.** *Immunity* 2001, **15**:127–35.
 29. Hajela K, Kojima M, Ambrus G, Wong KH, Moffatt BE, Ferluga J, Hajela S, Gal P, Sim RB: **The biological functions of MBL-associated serine proteases (MASPs).** *Immunobiology* 2002, **205**:467–75.
 30. Gadjeva M, Takahashi K, Thiel S: **Mannan-binding lectin—a soluble pattern recognition molecule.** *Mol Immunol* 2004, **41**:113–21.
 31. Fujita T, Matsushita M, Endo Y: **The lectin-complement pathway—its role in innate immunity and evolution.** *Immunol Rev* 2004, **198**:185–202.
 32. Kania PW, Sorensen RR, Koch C, Brandt J, Kiem A, Vitved L, Hansen S, Skjoldt K: **Evolutionary conservation of mannan-binding lectin (MBL) in bony fish: identification, characterization and expression analysis of three bona fide collectin homologues of MBL in the rainbow trout (*Onchorhynchus mykiss*).** *Fish Shellfish Immunol* 2010, **29**:910–20.
 33. Gruden-Movsesijan A, Petrovic M, Sofronic-Milosavljevic L: **Interaction of mannan-binding lectin with *Trichinella spiralis* glycoproteins, a possible innate immune mechanism.** *Parasite Immunol* 2003, **25**:545–52.
 34. Ambrosio AR, De Messias-Reason IJ: **Leishmania (Viannia) braziliensis: interaction of mannose-binding lectin with surface glycoconjugates and complement activation. An antibody-independent defence mechanism.** *Parasite Immunol* 2005, **27**:333–40.
 35. Evans-Osses I, Ansa-Addo EA, Inal JM, Ramirez MI: **Involvement of lectin pathway activation in the complement killing of *Giardia intestinalis*.** *Biochem Bioph Res Co* 2010, **395**:382–6.
 36. Cestari I, Evans-Osses I, Schlappach LJ, de Messias-Reason I, Ramirez MI: **Mechanisms of complement lectin pathway activation and resistance by trypanosomatid parasites.** *Mol Immunol* 2013, **53**:328–34.
 37. Sahu A, Lambris JD: **Structure and biology of complement protein C3, a connecting link between innate and acquired immunity.** *Immunol Rev* 2001, **180**:35–48.
 38. Cuesta A, Muñoz P, Rodríguez A, Salinas I, Sitjà-Bobadilla A, Álvarez-Pellitero P, Esteban MA, Meseguer J: **Gilthead seabream (*Sparus aurata* L.) innate defence against the parasite *Enteromyxum leei* (Myxozoa).** *Parasitology* 2006, **132**:95–104.
 39. van Vliet SJ, García-Vallejo JJ, van Kooyk Y: **Dendritic cells and C-type lectin receptors: coupling innate to adaptive immune responses.** *Immunol Cell Biol* 2008, **86**:580–7.
 40. Vázquez-Mendoza A, Carrero JC, Rodríguez-Sosa M: **Parasitic infections: a role for C-type lectins receptors.** *Biomed Res Int* 2013, **2013**:456352.
 41. Geijtenbeek TB, Torensma R, van Vliet SJ, van Duijnhoven GC, Adema GJ, van Kooyk Y, Figdor CG: **Identification of DC-SIGN, a novel dendritic cell-specific ICAM-3 receptor that supports primary immune responses.** *Cell* 2000, **100**:575–85.
 42. Lugo-Villarino G, Balla KM, Stachura DL, Bañuelos K, Werneck MBF, Traver D: **Identification of dendritic antigen-presenting cells in the zebrafish.** *Proc Natl Acad Sci U S A* 2010, **107**(36):15850–5.
 43. Y-h H, Zhang M, Sun L: **Expression of *Scophthalmus maximus* CD83 correlates with bacterial infection and antigen stimulation.** *Fish Shellfish Immunol* 2010, **29**(4):608–14.
 44. Rauta PR, Nayak B, Das S: **Immune system and immune responses in fish and their role in comparative immunity study: a model for higher organisms.** *Immunol Lett* 2012, **148**:23–33.
 45. Sitjà-Bobadilla A, Palenzuela O, Ríaza A, Macías MA, Álvarez-Pellitero P: **Protective acquired immunity to *Enteromyxum scophthalmi* (Myxozoa) is related to specific antibodies in *Psetta maxima* (L.) (Teleostei).** *Scand J Immunol* 2007, **66**(1):26–34.
 46. Keller AD, Maniatis T: **Identification and characterization of a novel repressor of beta-interferon gene expression.** *Gene Dev* 1991, **5**(5):868–79.
 47. Le Bon A, Tough DF: **Links between innate and adaptive immunity via type I interferon.** *Curr Opin Immunol* 2002, **14**(4):432–6.
 48. Schroder K, Hertzog PJ, Ravasi T, Hume DA: **Interferon-gamma: an overview of signals, mechanisms and functions.** *J Leukocyte Biol* 2004, **75**(2):163–89.
 49. McCall MBB, Sauerwein RW: **Interferon- γ —central mediator of protective immune responses against the pre-erythrocytic and blood stage of malaria.** *J Leukocyte Biol* 2010, **88**(6):1131–43.
 50. Zou J, Secombes CJ: **Teleost fish interferons and their role in immunity.** *Dev Comp Immunol* 2011, **35**(12):1376–87.
 51. Rappocciolo G, Birch J, Ellis SA: **Down-regulation of MHC class I expression by equine herpesvirus-1.** *J Gen Virol* 2003, **84**(2):293–300.
 52. Vincent IE, Zannetti C, Lucifora J, Norder H, Protzer U, Hainaut P, Zoulim F, Tommasino M, Trépo C, Hasan U, Chemin I: **Hepatitis B Virus Impairs TLR9 Expression and Function in Plasmacytoid Dendritic Cells.** *PLoS One* 2011, **6**(10):e26315.
 53. Gainey MD, Rivenbark JG, Cho H, Yang L, Yokoyama WM: **Viral MHC class I inhibition evades CD8+ T-cell effector responses in vivo but not CD8+ T-cell priming.** *Proc Natl Acad Sci U S A* 2012, **109**(47):E3260–7.
 54. Song W, Kao W, Zhai A, Qian J, Li Y, Zhang Q, Zhao H, Hu Y, Li H, Zhang F: **Borna disease virus nucleoprotein inhibits type I interferon induction through the interferon regulatory factor 7 pathway.** *Biochem Bioph Res Co* 2013, **438**(4):619–23.
 55. Babu S, Blauvelt CP, Kumaraswami V, Nutman TB: **Diminished expression and function of TLR in lymphatic filariasis: a novel mechanism of immune dysregulation.** *J Immunol* 2005, **175**(2):1170–6.
 56. Asteal F: **A study of Immune responses to *L. mexicana* Antigens and Immunogenicity of *L. donovani* Centrin-3.** In *PhD thesis*: Nottingham Trent University, School of Science and Technology, Nottingham; 2011.
 57. Srivastava S, Pandey SP, Jha MK, Chandel HS, Saha B: ***Leishmania* expressed lipophosphoglycan interacts with Toll-like receptor (TLR)-2 to decrease TLR-9 expression and reduce anti-leishmanial responses.** *Clin Exp Immunol* 2013, **172**(3):403–9.
 58. Young ND, Cooper GA, Nowak BF, Koop BF, Morrison RN: **Coordinated down-regulation of the antigen processing machinery in the gills of amoebic gill disease-affected Atlantic salmon (*Salmo salar* L.).** *Mol Immunol* 2008, **45**(9):2581–97.
 59. Peck A, Mellins ED: **Precarious balance: Th17 cells in host defense.** *Infect Immun* 2010, **78**(1):32–8.
 60. van de Veerdonk FL, Gresnigt MS, Kullberg BJ, van der Meer JW, Joosten LA, Netea MG: **Th17 responses and host defense against microorganisms: an overview.** *BMB Rep* 2009, **42**(12):776–87.
 61. Fujino S, Andoh A, Bamba S, Ogawa A, Hata K, Araki Y, Bamba T, Fujiyama Y: **Increased expression of interleukin 17 in inflammatory bowel disease.** *Gut* 2003, **52**(1):65–70.
 62. Kelly MN, Kolls JK, Happel K, Schwartzman JD, Schwarzenberger P, Combe C, Moretto M, Khan IA: **Interleukin-17/interleukin-17 receptor-mediated signaling is important for generation of an optimal polymorphonuclear response against *Toxoplasma gondii* infection.** *Infect Immun* 2005, **73**(1):617–21.
 63. Zenewicz LA, Yancopoulos GD, Valenzuela DM, Murphy AJ, Stevens S, Flavell RA: **Innate and adaptive interleukin-22 protects mice from inflammatory bowel disease.** *Immunity* 2008, **29**(6):947–57.
 64. Glass EJ: **The molecular pathways underlying host resistance and tolerance to pathogens.** *Front Genet* 2012, **3**:263.
 65. Wynne JW, O'Sullivan MG, Cook MT, Stone G, Nowak BF, Lovell DR, Elliott NG: **Transcriptome analyses of amoebic gill disease-affected Atlantic salmon (*Salmo salar*) tissues reveal localized host gene suppression.** *Mar Biotechnol* 2008, **10**(4):388–403.

66. Bates JM, Akerlund J, Mittge E, Guillemin K: **Intestinal alkaline phosphatase detoxifies lipopolysaccharide and prevents inflammation in zebrafish in response to the gut microbiota.** *Cell Host Microbe* 2007, **2**(6):371–82.
67. Bol-Schoenmakers M, Fiechter D, Raaben W, Hassing I, Bleumink R, Kruijswijk D, Maijor K, Tersteeg-Zijderveld M, Brands R, Pieters R: **Intestinal alkaline phosphatase contributes to the reduction of severe intestinal epithelial damage.** *Eur J Pharmacol* 2010, **633**(1–3):71–7.
68. Lee C, Chun J, Hwang SW, Kang SJ, Im JP, Kim JS: **The effect of intestinal alkaline phosphatase on intestinal epithelial cells, macrophages and chronic colitis in mice.** *Life Sci* 2014, **100**(2):118–24.
69. Keklikoglu N, Koray M, Kocaelli H, Akinci S: **iNOS expression in oral and gastrointestinal tract mucosa.** *Digest Dis Sci* 2008, **53**(6):1437–42.
70. Hansen R, Thomson JM, El-Omar EM, Hold GL: **The role of infection in the aetiology of inflammatory bowel disease.** *J Gastroenterol* 2010, **45**(3):266–76.
71. Marchiando AM, Shen L, Graham WW, Edelblum KL, Duckworth CA, Guan Y, Montrose MH, Turner JR, Watson AJ: **The epithelial barrier is maintained by in vivo tight junction expansion during pathologic intestinal epithelial shedding.** *Gastroenterology* 2011, **140**(4):1208–18. e1201–1202.
72. Watson AJ, Hughes KR: **TNF-alpha-induced intestinal epithelial cell shedding: implications for intestinal barrier function.** *Ann NY Acad Sci* 2012, **1258**:1–8.
73. Panaro MA, Cianciulli A, Mitolo V, Mitolo CI, Acquafredda A, Brandonisio O, Cavallo P: **Caspase-dependent apoptosis of the HCT-8 epithelial cell line induced by the parasite *Giardia intestinalis*.** *FEMS Immunol Med Mic* 2007, **51**(2):302–9.
74. Lovegrove FE, Gharib SA, Patel SN, Hawkes CA, Kain KC, Liles WC: **Expression microarray analysis implicates apoptosis and interferon-responsive mechanisms in susceptibility to experimental cerebral malaria.** *Am J Pathol* 2007, **171**(6):1894–903.
75. Wyllie AH: **“Where, O Death, Is Thy Sting?” A Brief Review of Apoptosis Biology.** *Mol Neurobiol* 2010, **42**(1):4–9.
76. Bienvenu A-L, González-Rey E, Picot S: **Apoptosis induced by parasitic diseases.** *Parasite Vector* 2010, **3**(1):106.
77. James ER, Green DR: **Manipulation of apoptosis in the host parasite interaction.** *Trends Parasitol* 2004, **20**(6):280–7.
78. Castellanos-Gonzalez A, Yancey LS, Wang HC, Pantenburg B, Liscum KR, Lewis DE, White AC Jr: ***Cryptosporidium* infection of human intestinal epithelial cells increases expression of osteoprotegerin: a novel mechanism for evasion of host defenses.** *J Infect Dis* 2008, **197**(6):916–23.
79. Okunishi K, Dohi M, Nakagome K, Tanaka R, Mizuno S, Matsumoto K, Miyazaki J, Nakamura T, Yamamoto K: **A novel role of hepatocyte growth factor as an immune regulator through suppressing dendritic cell function.** *J Immunol* 2005, **175**(7):4745–53.
80. Benkhoucha M, Santiago-Raber M-L, Schneiter G, Chofflon M, Funakoshi H, Nakamura T, Lalive PH: **Hepatocyte growth factor inhibits CNS autoimmunity by inducing tolerogenic dendritic cells and CD25 + Foxp3+ regulatory T cells.** *Proc Natl Acad Sci U S A* 2010, **107**(14):6424–9.
81. Benkhoucha M, Molnarfi N, Schneiter G, Walker P, Lalive P: **The neurotrophic hepatocyte growth factor attenuates CD8+ cytotoxic T-lymphocyte activity.** *J Neuroinflammation* 2013, **10**(1):154.
82. Ganz T: **Hepcidin and iron regulation, 10 years later.** *Blood* 2011, **117**(17):4425–33.
83. Neves JV, Caldas C, Wilson JM, Rodrigues PNS: **Molecular mechanisms of hepcidin regulation in sea bass (*Dicentrarchus labrax*).** *Fish Shellfish Immunol* 2011, **31**(6):1154–61.
84. Pereiro P, Figueras A, Novoa B: **A novel hepcidin-like in turbot (*Scophthalmus maximus* L.) highly expressed after pathogen challenge but not after iron overload.** *Fish Shellfish Immunol* 2012, **32**(5):879–89.
85. Ganz T: **The role of hepcidin in iron sequestration during infections and in the pathogenesis of anemia of chronic disease.** *Isr Med Assoc J* 2002, **4**(11):1043–5.
86. Tizard IR: *Veterinary Immunology: An Introduction, 8th Edition.* India: CBS Publishers & Distributors; 2009.
87. Estensoro I, Benedito-Palos L, Palenzuela O, Kaushik S, Sitjà-Bobadilla A, Pérez-Sánchez J: **The nutritional background of the host alters the disease course in a fish–myxosporean system.** *Vet Parasitol* 2011, **175**(1–2):141–50.
88. Salem M, Silverstein J, Rexroad CE 3rd, Yao J: **Effect of starvation on global gene expression and proteolysis in rainbow trout (*Oncorhynchus mykiss*).** *BMC Genomics* 2007, **8**:328.
89. Pérez-Jiménez A, Cardenete G, Hidalgo MC, García-Alcázar A, Abellán E, Morales AE: **Metabolic adjustments of Dentex dentex to prolonged starvation and refeeding.** *Fish Physiol Biochem* 2012, **38**(4):1145–57.
90. Antonopoulou E, Kentepozidou E, Feidantsis K, Roufidou C, Despoti S, Chatzifotis S: **Starvation and re-feeding affect Hsp expression, MAPK activation and antioxidant enzymes activity of European Sea Bass (*Dicentrarchus labrax*).** *Comp Biochem Phys A* 2013, **165**(1):79–88.
91. Hayes J, Volkoff H: **Characterization of the endocrine, digestive and morphological adjustments of the intestine in response to food deprivation and torpor in cunner, *Tautoglabrus adspersus*.** *Comp Biochem Phys A* 2014, **170**:46–59.
92. Kyriazakis I, Tolkamp BJ, Hutchings MR: **Towards a functional explanation for the occurrence of anorexia during parasitic infections.** *Anim Behav* 1998, **56**(2):265–74.
93. Barber I: **Parasites, behaviour and welfare in fish.** *Appl Anim Behav Sci* 2007, **104**(3–4):251–64.
94. Colditz IG: **Six costs of immunity to gastrointestinal nematode infections.** *Parasite Immunol* 2008, **30**(2):63–70.
95. Wykes LJ, Fiorotto M, Burrin DG, Del Rosario M, Frazer ME, Pond WG, Jahoor F: **Chronic low protein intake reduces tissue protein synthesis in a pig model of protein malnutrition.** *J Nutr* 1996, **126**(5):1481–8.
96. Lenaerts K, Sokolovic M, Bouwman FG, Lamers WH, Mariman EC, Renes J: **Starvation induces phase-specific changes in the proteome of mouse small intestine.** *J Proteome Res* 2006, **5**(9):2113–22.
97. Redondo MJ, Palenzuela O, Rianza A, Macias A, Álvarez-Pellitero P: **Experimental transmission of *Enteromyxum scophthalmi* (Myxozoa), an enteric parasite of turbot *Scophthalmus maximus*.** *J Parasitol* 2002, **88**(3):482–8.
98. Lohse M, Bolger AM, Nagel A, Fernie AR, Lunn JE, Stitt M, Usadel B: **RobiNA: a user-friendly, integrated software solution for RNA-Seq-based transcriptomics.** *Nucleic Acids Res* 2012, **40**(W1):W622–7.
99. Kim D, Pertea G, Trapnell C, Pimentel H, Kelley R, Salzberg S: **TopHat2: accurate alignment of transcriptomes in the presence of insertions, deletions and gene fusions.** *Genome Biol* 2013, **14**(4):R36.
100. Langmead B, Salzberg SL: **Fast gapped-read alignment with Bowtie 2.** *Nat Meth* 2012, **9**(4):357–9.
101. Robinson M, Oshlack A: **A scaling normalization method for differential expression analysis of RNA-seq data.** *Genome Biol* 2010, **11**:R25.
102. Suzuki R, Shimodaira H: **Pvclust: an R package for assessing the uncertainty in hierarchical clustering.** *Bioinformatics* 2006, **22**:1540–2.
103. Edgar R, Domrachev M, Lash AE: **Gene Expression Omnibus: NCBI gene expression and hybridization data repository.** *Nucleic Acids Res* 2002, **30**(1):207–10.

doi:10.1186/1471-2164-15-1149

Cite this article as: Robledo et al.: RNA-seq analysis reveals significant transcriptome changes in turbot (*Scophthalmus maximus*) suffering severe enteromyxosis. *BMC Genomics* 2014 **15**:1149.

Submit your next manuscript to BioMed Central and take full advantage of:

- Convenient online submission
- Thorough peer review
- No space constraints or color figure charges
- Immediate publication on acceptance
- Inclusion in PubMed, CAS, Scopus and Google Scholar
- Research which is freely available for redistribution

Submit your manuscript at
www.biomedcentral.com/submit

