

RESEARCH ARTICLE

Open Access



Perioperative changes in cell-free DNA for patients undergoing surgery for colon cancer

Andreas W. Rosen^{1†}, Mikail Gögenur^{1*†} , Isabella W. Paulsen^{2,3}, Jesper Olsen^{1,3}, Susanne Eiholm⁴, Lene T. Kirkeby⁵, Ole B. Pedersen², Niels Pallisgaard⁴ and Ismail Gögenur^{1,6,7}

Abstract

Background: Various conditions with cellular decay are associated with elevated cell-free DNA (cfDNA). This study aimed to investigate if perioperatively measured cfDNA levels were associated with the surgical approach, complications, or recurrence.

Methods: Plasma was obtained from patients who underwent surgery for colon cancer at admission and at the time of discharge. Quantitative measurement of cfDNA was performed by amplifying two amplicons of 102 base pairs (bp) and 132 bp of *Beta-2-Microglobulin (B2M)* and *Peptidyl-Prolyl cis-trans Isomerase A (PPIA)*, respectively.

Results: cfDNA was measured in 48 patients who underwent surgery for colonic cancer. Sixteen patients had recurrence during the follow-up period, fifteen developed a postoperative complication, and seventeen patients developed neither, acting as the control group. Postoperative cfDNA levels were significantly elevated from baseline samples, across all groups, with a median preoperatively *B2M* level of 48.3 alleles per mL and postoperatively of 220 alleles per mL and a median preoperatively level *PPIA* of 26.9 alleles per mL and postoperatively of 111.6 alleles per mL ($p < 0.001$ for *B2M* and $p < 0.001$ for *PPIA*). Postoperative levels of *PPIA*, but not *B2M*, were significantly higher in patients experiencing complications than in the control group ($p = 0.036$). However, a tendency towards an association between the surgical approach and the changes in cfDNA levels was found for *PPIA* ($p = 0.058$), and *B2M* ($p = 0.087$).

Conclusions: Plasma cfDNA was increased after surgery in all patients with colon cancer. Postoperative *PPIA* levels were significantly higher in patients experiencing surgical complications but not in *B2M* levels.

Keywords: Colon Cancer, Cell-free DNA, Perioperative, Surgery, Complications, Surgical stress

Background

Curative treatment of localized colorectal cancer (CRC) remains to be surgery. However, following curative surgery, patients with stage three cancer still have a

thirty-three percent risk of recurrence, the leading cause of morbidity and mortality of CRC [1]. Surgery can also cause detrimental complications for the patients, with long-term side effects and readmissions, and prolonged time to adjuvant chemotherapy reducing the impact of the chemotherapy on oncological outcomes [2].

Identifying which patients are at high risk of recurrence in the perioperative period would enable targeting adjuvant chemotherapy at patients with an increased risk of recurrence, and patients with a low risk of recurrence

*Correspondence: mgog@regsj.dk

†Andreas W. Rosen and Mikail Gögenur contributed equally to this work and shared first authors

¹ Center for Surgical Science, Department of Surgery, Zealand University Hospital, Lykkebækvej 1, 4600 Køge, Denmark

Full list of author information is available at the end of the article



could be spared of adjuvant chemotherapy. In addition, identifying patients at high risk of developing complications to surgery could enable targeted perioperative regimes with increased patient surveillance. Thus, an accurate biomarker of surgical stress that could predict if patients have an increased risk of complications or recurrence would be valuable.

Nucleic acids found in the plasma are a promising biomarker for the recurrence of disease in patients with malignant disease. They can be measured as cell-free DNA (cfDNA), found in various body fluids, such as stool, urine, cerebrospinal fluid, and pleural effusion [3–6]. Previous studies have shown that cfDNA levels are elevated in patients with CRC than healthy individuals [7]. A subset of cfDNA derived from mitochondria has been demonstrated to act as damage-associated molecular patterns [8]. This is of particular interest because the release of damage-associated molecular patterns helps promote post-traumatic immunosuppression [9]. This, in turn, potentially increases the risk of relapse for patients undergoing surgery for malignant diseases [10].

We have previously shown that acute trauma increases cfDNA concentration in blood and is correlated with mortality and severity of trauma [11]. We have also demonstrated that cfDNA increases following curative surgery for colorectal cancer [12]. In this exploratory study, we investigate if different surgical approaches, surgical complications, or later recurrence influenced perioperative cfDNA concentration in patients with colon cancer.

Subjects and methods

Patients

Repository samples from 48 patients undergoing surgery for colon cancer were analyzed in a case–control designed setting. The samples originated from patients admitted to the Department of Surgery of Zealand University Hospital, Denmark, with a histologically confirmed adenocarcinoma. The inclusion criteria were histologically confirmed adenocarcinoma, age ≥ 18 , no prior radio- or chemotherapy, and written consent to participate in the study. All patients consented, and the inclusion period was between September 2006 and May 2012. During this period, laparoscopic surgery for colon cancer was introduced at the Department of Surgery at Zealand University Hospital, Denmark. In addition, standard postoperative care for the patients at the department included an enhanced recovery after surgery program.

All 48 patients had localized disease at the time of surgery. Sixteen patients had disease recurrence during the follow-up and no surgical complications. Fifteen patients developed surgical complications defined as

Clavian-Dindo Class III or greater [13] but had no recurrence during the follow-up. A control group of seventeen patients with neither recurrence of disease during follow-up or surgical complications were selected from the cohort to match the event groups on variables sex, stage, age, and time to a blood test. Blood samples were drawn into EDTA tubes preoperatively the day before surgery and at the time of discharge from the ward. Samples were centrifuged once and stored in a -80 degree freezer until analysis. cfDNA analysis was performed in July 2017 using ddPCR. Medical information was obtained from the patients' medical records. Patients had a preoperative assessment with either a combined CT scan of the thorax and abdomen or a CT of the abdomen and a thorax X-ray. Patients were followed until recurrence, death from any cause, discontinuation in the postoperative follow-up program, or for a maximum of 5 years. The study was approved by the Danish National Committee on Biomedical Research Ethics (Protocol no.: Ø-2006-1-11G and SJ-373) and the Danish Data Protection Agency (approval no. 2014-41-2670).

cfDNA

Plasma was stored at -80 °C until analysis. cfDNA was isolated from 1 ml plasma on Magna Pure Compact Instrument (Roche Denmark, Denmark) using MagNA Pure Compact Nucleic Acid Isolation Kit I—Large Volume (cat.no.: 03730972001) according to manufacturer description. Droplet digital polymerase chain reaction (ddPCR) (QX200 instrument and reagents from Bio-Rad Laboratories, Inc. Hercules, CA, USA, droplet Generator Oil, Droplet Reader Oil, ddPCR Supermix) were used to measure genomic *Peptidyl-Prolyl cis–trans Isomerase A (PPIA)* (primer set from TAG Copenhagen A/S, probe from LGC Biosearch Technologies with 3'-BHQ1 and 5'-Fam) [14] and beta-2 microglobulin (*B2M*) (primer set from TAG Copenhagen A/S, probe from LGC Biosearch Technologies with 3'-BHQ1 and 5'-Fam) [15]. Primers and probes were combined in a multiplex ddPCR reaction and used to measure cfDNA. The DNA copy numbers obtained from ddPCR were converted to copy numbers/alleles per 1 ml plasma. Some samples did not contain sufficient plasma, and TE-buffer from Thermo Fisher Scientific cat.no.: 12090015 was added up to a total volume of 1000 μ l. The dilution was corrected during the analysis. All samples were analyzed as duplicates with ddPCR.

Statistical analysis

The mean of the ddPCR duplicates was used as the concentration of cfDNA. Due to the right-skewed distribution of cfDNA data non-parametric test was used to test

the difference between the groups. A Wilcoxon signed-rank test was used for paired data between two groups, a Wilcoxon rank-sum test when testing for two groups with non-paired data, and a Kruskal Wallis rank-sum test when comparing more than two groups with non-paired data. The median and the corresponding 95% confidence interval (CI) of cfDNA concentration was calculated by bootstrapping with 5000 replications. The clinical parameters and visualization were analyzed using R (version 3.5.0, Vienna, Austria) and Rstudio (version 1.1.453, Boston, MA, USA), packages *tidyr* [16], *dplyr* [17] and *plyr* [18], for data manipulation. The package *boot* [19, 20] was used to calculate bootstrapped confidence intervals. The packages *ggplot2* [21], *cow plot* [22], *ggsinginf* [23], *ggpubr* [24], and *grid* [25] were used for visualization. *Lubridate* [26] was used for calculations between dates. In this study, *p* values below 0.05 were considered significant.

Results

We included 48 patients, of which 69% were male. Most patients had either stage II or III disease (46% and 48%). A laparoscopic procedure was the most common surgical approach (71%). In four patients, procedures started as laparoscopic but were converted to open surgery; in three of these, an open resection was considered more suitable, and in one of these, the change was done because of insufficient hemostasis during the laparoscopic procedure. The 48 patients were in three groups; patients who had a surgical complication, defined as a Clavien-Dindo classification of IIIb or greater ($n = 15$) [13], a recurrence

in the study period ($n = 16$), or a control group without relapse or surgical complications ($n = 17$). The cohort had a median follow-up time of 48 months, ranging between 1 and 60 months. The end of the follow-up was January the 11th, 2017. Table 1 shows summarized patient demographics. A single patient had great variance between the concentration of B2M with the two preoperative measurements of 52.0 and 7680.0 alleles per mL plasma, respectively. The preoperative measurements of PPIA for the same patient were 24.4 and 28.0 alleles per mL plasma. The measurement of 7680 was notably above the range of other preoperative B2M observations. This was properly due to contamination with lymphocyte DNA during plasma preparation. Therefore, the sample was omitted for further analysis and replaced with the value of the other duplicate of 52.0 alleles per mL.

No difference in preoperative cfDNA concentration

We found no difference in the preoperative cfDNA concentration across all groups (B2M: $p = 0.71$, PPIA: $p = 0.66$) or when comparing them individually with the control group (B2M: $p = 0.47$ and $p = 0.68$ for complication and recurrence groups, respectively. PPIA: $p = 0.58$ and $p = 0.86$ for complication and recurrence groups, respectively) (Fig. 1). No difference was likewise noted when stratifying for the UICC stage (B2M: $p = 0.29$, PPIA: $p = 0.26$).

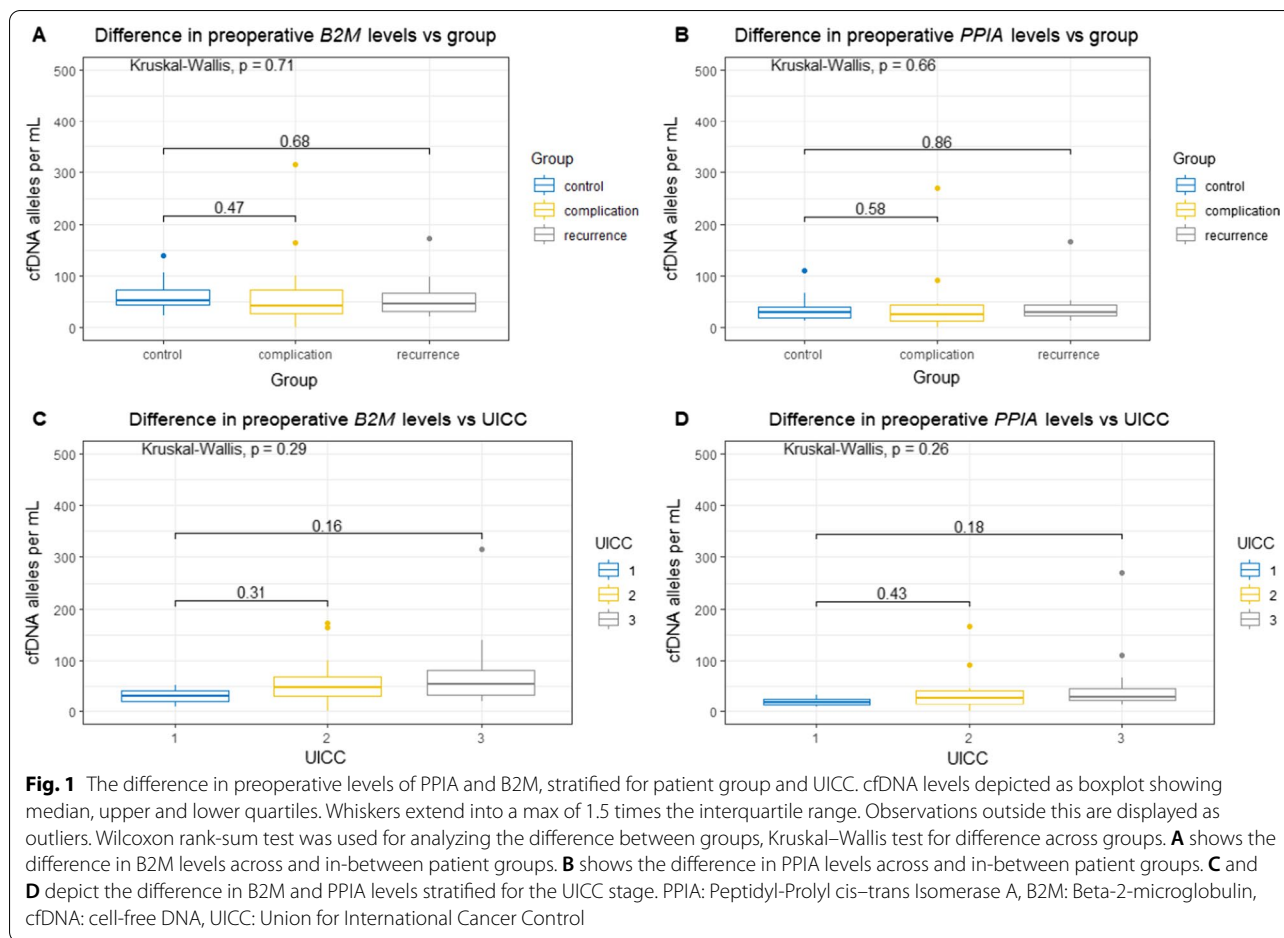
cfDNA concentration increases in postoperative samples

The median concentration of B2M was 48.3 alleles per mL (95% CI 40.06–57.30 alleles per mL) preoperatively

Table 1 Baseline characteristics

Group	Patients (48)		
	Complication (n = 15)	Recurrence (n = 16)	Control (n = 17)
Median Age (range), years	71 (53–82)	70 (56–88)	71 (46–87)
Sex (%)			
Male	12(80.0)	10 (62.5)	11 (64.7)
Female	3 (20.0)	6 (37.5)	6 (35.3)
UICC stage (%)			
I	2 (13.3)	0 (0.0)	1 (5.9)
II	10 (66.7)	3 (18.8)	9 (52.9)
III	3 (20)	13 (81.2)	7 (41.2)
Median time to postoperative blood sample (range), days	4 (2–10)	4 (1–18)	4 (2–14)
Procedure (%)			
Open	7 (46.7)	2 (12.5)	5 (29.4)
Laparoscopic	8 (53.3)	14 (87.5)	12 (70.6)

UICC Union of International Cancer Control



and 220 alleles per mL (95% CI 151.9–289.1 alleles per mL) postoperatively. For *PPIA*, the median concentrations were 26.9 alleles per mL (95% CI 21.71–32.05 alleles per mL) preoperatively and 111.6 alleles per mL (95% CI 71.0–145.4 alleles per mL) postoperatively (Fig. 2). cfDNA concentration was significantly elevated postoperatively for both *PPIA* and *B2M* in all groups ($p < 0.001$ for *B2M* and $p < 0.001$ for *PPIA*).

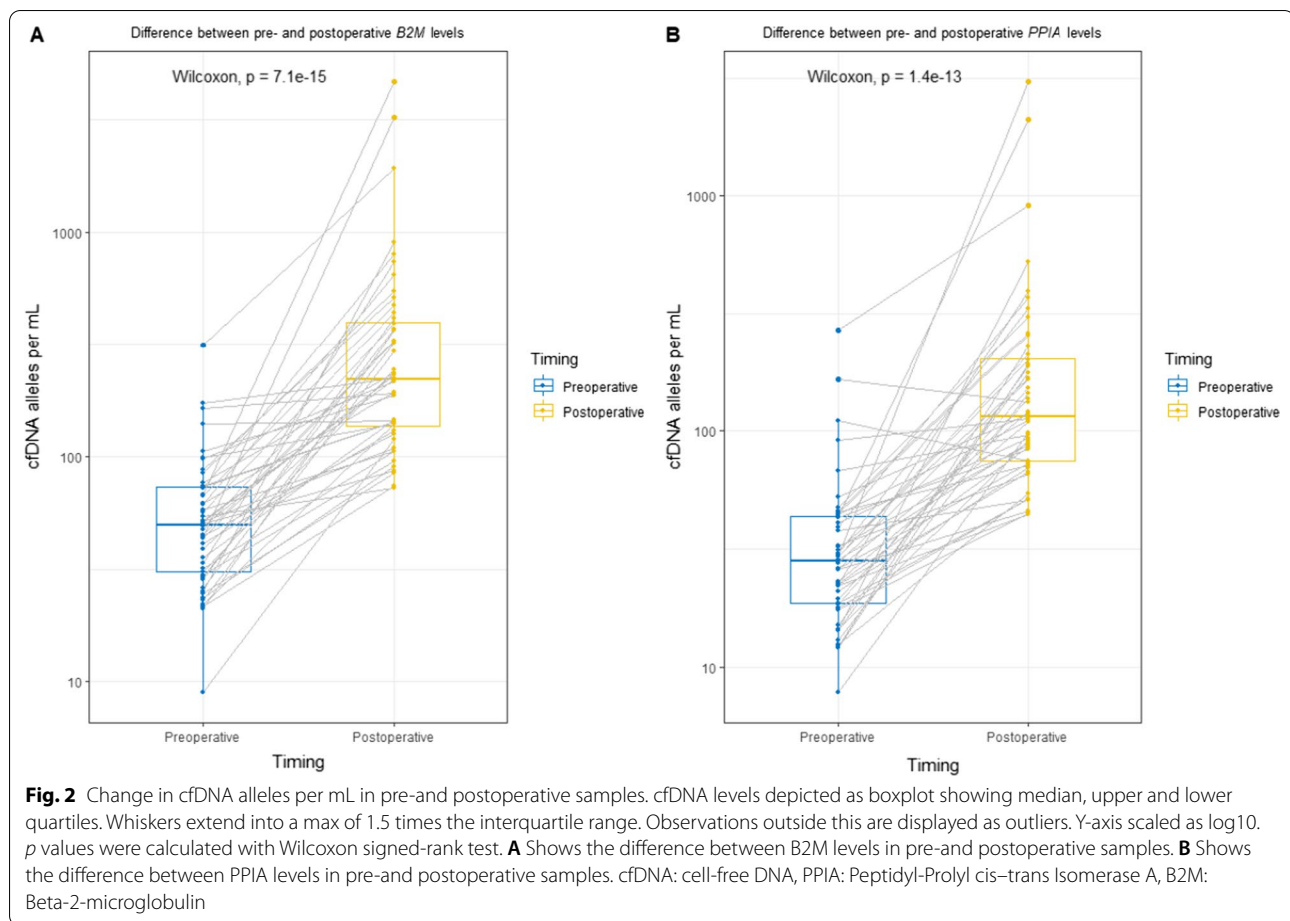
Complications and surgical approach

When comparing the change of cfDNA in the perioperative period, we found a median change of 211.4 alleles *B2M* per mL (95% CI –78.5 to 422.0) and 137.6 (95% CI 12.3–240.6) alleles *PPIA* per mL for the complication group, 144.7 alleles *B2M* per mL (95% CI –10.2 to 251.4) and 65.2 alleles *PPIA* per mL (95% CI –8.73 to 110.17) for the relapse group and 117.4 alleles *B2M* per mL (95% CI –22.7 to 216.2) and 61.0 alleles *PPIA* per mL (95% CI 2.21–101.83) for the control group. No statistical difference between the groups was found for *PPIA* or

B2M ($p = 0.265$ for *PPIA* and $p = 0.497$ for *B2M*), respectively. However, when comparing the groups individually, we noted a trend towards significance in *PPIA* levels for patients with complications ($p = 0.071$) (Fig. 3).

The median change in *B2M* concentration was 124.1 alleles per mL (95% CI 37.9–194.3) for patients who underwent a laparoscopic procedure and 246.1 alleles per mL (95% CI –122.3 to 484.6) for patients who underwent an open procedure. The median change in *PPIA* was 71.1 alleles per mL (95% CI 31.30–107.56) for patients who underwent a laparoscopic procedure and 135.9 alleles per mL (95% CI –43.5 to 252.5) for patients for underwent an open procedure. This showed that patients who underwent the open procedure had a borderline significantly elevated cfDNA concentration compared with patients who underwent a laparoscopic procedure ($p = 0.058$ for *PPIA* and $p = 0.087$ for *B2M*) (Fig. 3).

When comparing postoperative levels of cfDNA, we noted that although there was no significant difference across all groups ($p = 0.29$ and $p = 0.12$ for *B2M* and *PPIA*



levels, respectively), patients with complications had a significantly higher level of PPIA compared with controls (Fig. 4). No significance was noted for B2M levels.

Discussion

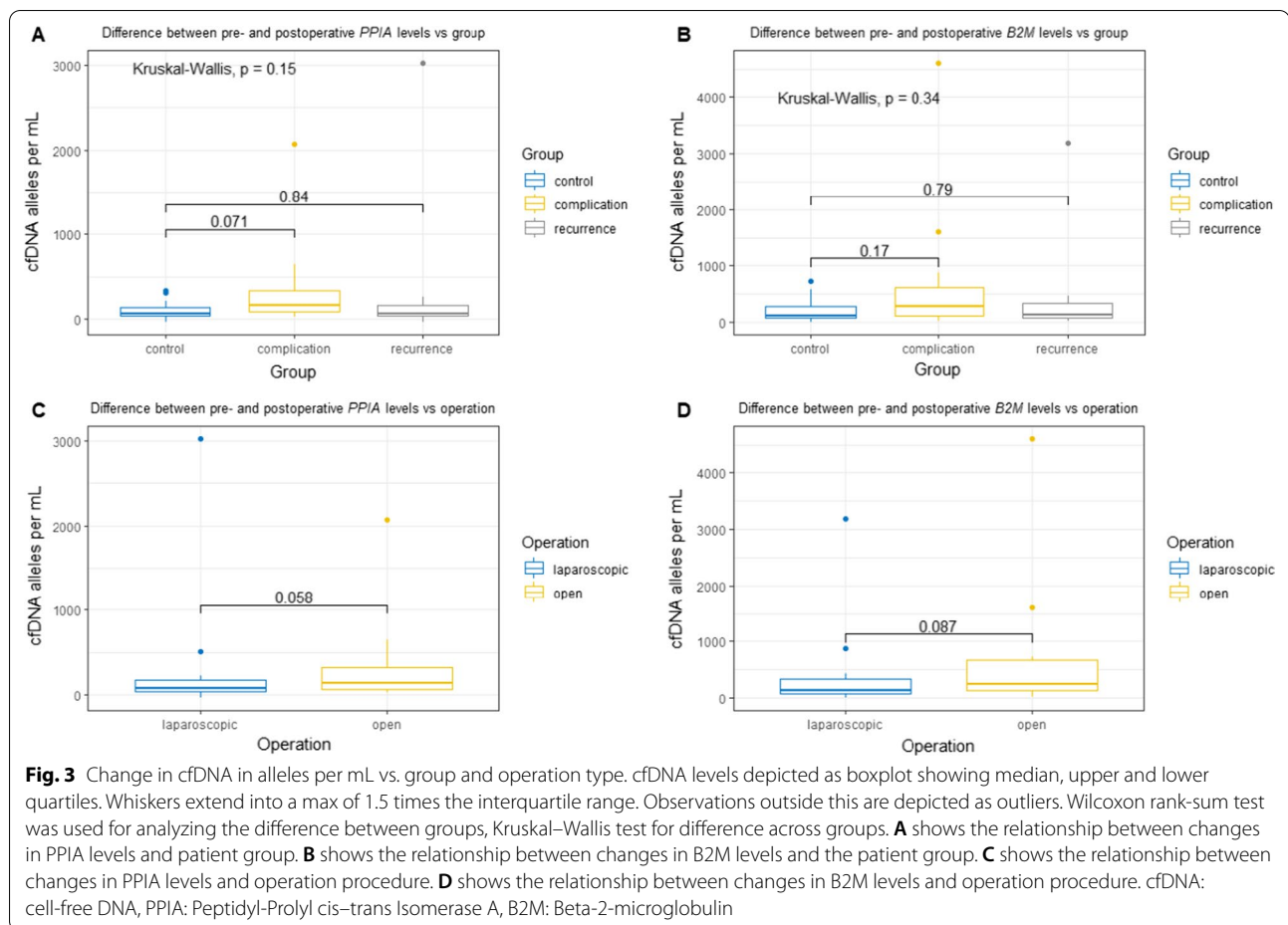
The present study confirmed previous findings of elevation of cfDNA after surgical procedures in patients with colon cancer. In addition, we could show that the PPIA level after surgery was significantly elevated in patients with complications compared with controls.

Changes in the concentration of cfDNA following surgery have been described previously in a study that investigated the changes in cfDNA concentration perioperatively for patients who underwent liver transplantation either as a donor or recipient or patients with colorectal cancer [12, 27]. Similarly, a randomized clinical study investigated inflammatory markers in patients who underwent liver resection for liver metastases and randomized patients to either an open or laparoscopic procedure. Here the authors showed a significant

increase in cfDNA in serial measurements as the area under the curve [28]. We have previously shown in a systematic review that acute trauma also induces increased cfDNA concentration [11]. With this study, we can confirm previous findings of the impact of surgery on cfDNA concentration and show a borderline significant difference between patients undergoing an open versus laparoscopic procedure. However, we could not show the influence of stage on cfDNA, which others previously have shown [29].

cfDNA is associated with inflammation [30], which might make cfDNA a viable marker to monitor surgical stress. Interestingly, we noted a significant difference between PPIA levels in patients experiencing surgical complications compared with controls.

In animal models, surgical stress is associated with increased tumor growth [31], making cfDNA a potential biomarker for surgical stress-induced tumor growth in some patients. In addition, a recent study showed that cfDNA was originating from the nucleus



of cells corresponded with immunosuppression in trauma patients, while mitochondrial DNA did not [32]. This finding might explain some of the mechanisms seen in animal models between tumor growth and cfDNA.

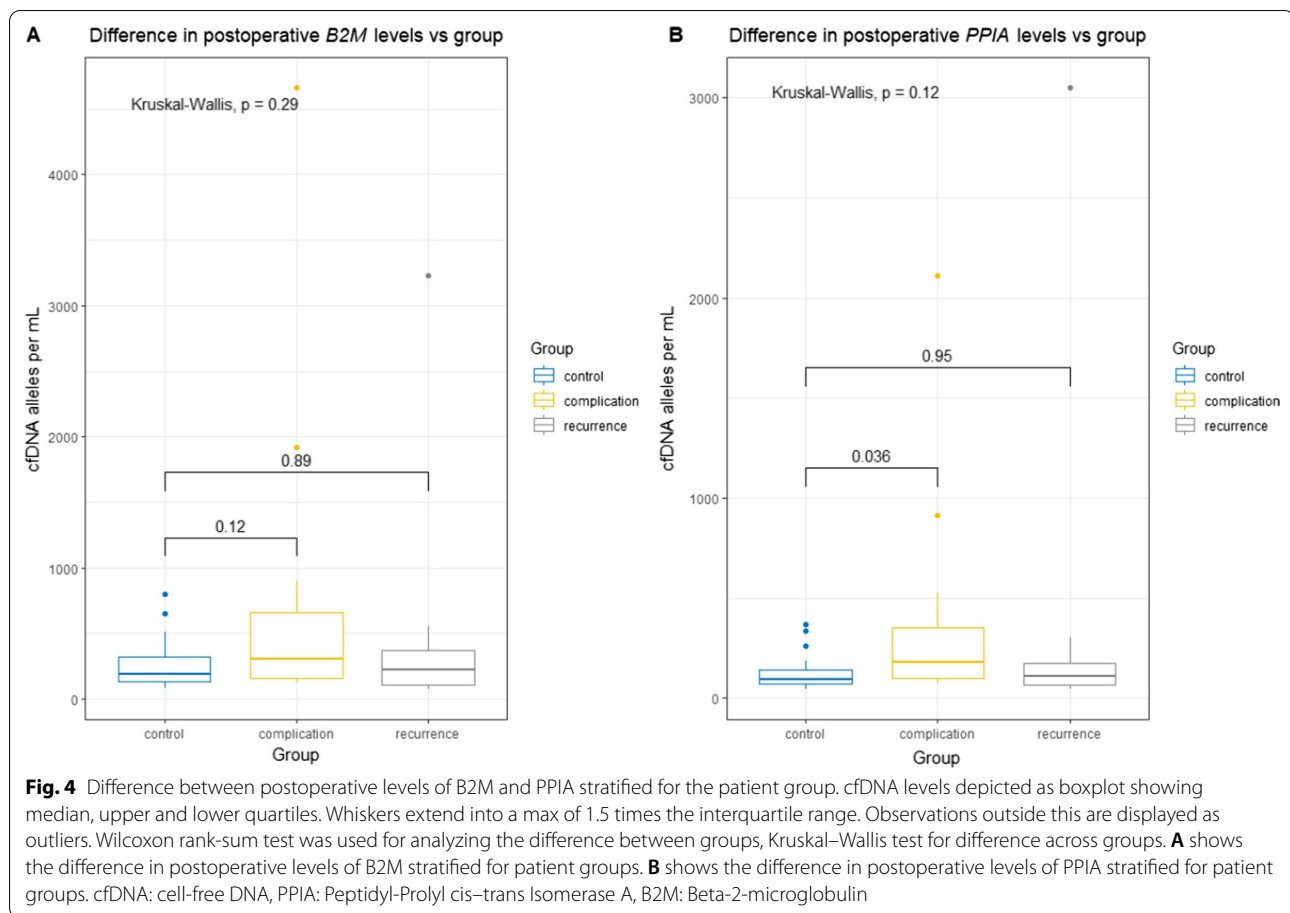
However, we could not find a correlation between later development of recurrence and perioperative cfDNA.

A small study population limited this study which could explain why we could not confirm previous findings of higher cfDNA levels proportional with higher UICC stage. In addition, the distribution between patients undergoing open or laparoscopic surgery was different in the groups. Likewise, others have shown that age and comorbidities influence cfDNA concentration, which could impact our results [33]. The association between laparoscopic versus open surgery was thus only borderline significant, but we found a significant difference in PPIA levels for patients experiencing a surgical complication compared with controls. The difference between

B2M and PPIA in our analysis could be affected by either gain or loss of PPIA or B2M alleles, which we previously have discovered in another study [34]. This data was not available for the current study.

Conclusions

The present study found cfDNA to be statistically significantly elevated after surgery compared to the baseline. Even though a trend was evident in perioperative changes of cfDNA when comparing patients experiencing complications with controls, and a significant difference in postoperative PPIA levels, this study is limited due to its reduced number of patients. However, a borderline statistically significant association between changes in the cfDNA concentration and operation type was found. Further analyzing the implications of cfDNA on surgical stress with established markers of inflammation in more extensive studies are warranted.



Abbreviations

B2M: Beta-2 microglobulin; Bp: Base pairs; cfDNA: Cell-free DNA; CI: Confidence interval; CRC: Colorectal cancer; ddPCR: Droplet digital polymerase chain reaction; PPIA: Peptidyl-prolyl-cis–trans isomerase A; UICC: Union of International Cancer Control.

Acknowledgements

We thank Professor Jørgen Olsen for his contribution to establishing the biobank.

Authors' contributions

LTK created the biobank, AWR, MG, JO, SE, OBVP, NP and IG designed the study, AWR and JO performed preanalytical sample handling, IWP, OBVP, and NP performed the laboratory analysis, AWR, MG and IWP performed the data analysis, AWR and MG wrote the manuscript in consultation with IG and input with the rest of the authors. All authors approved the final manuscript.

Funding

This research did not receive any funding.

Availability of data and materials

The datasets used and/or analysed during the current study are available from the corresponding author on reasonable request.

Declarations

Ethics approval and consent to participate

According to Danish Legislation, it was not a requirement to have institutional review board Ethical approval.

Consent for publication

Not applicable.

Competing interests

The authors declare that there is no competing interests.

Author details

¹Center for Surgical Science, Department of Surgery, Zealand University Hospital, Lykkebækvej 1, 4600 Køge, Denmark. ²Department of Clinical Immunology, Zealand University Hospital, Ringstedgade 77b, 4700 Næstved, Denmark. ³Department of Science and Environment, Roskilde University, Universitetsvej 1, 4000 Roskilde, Denmark. ⁴Department of Pathology, Zealand University Hospital, Sygehusvej 9, 4000 Roskilde, Denmark. ⁵Department of Surgery, Zealand University Hospital, Sygehusvej 6, 4000 Roskilde, Denmark. ⁶Faculty of Health and Medical Sciences, University of Copenhagen, Blegdamsvej 3B, 2200 Copenhagen N, Denmark. ⁷Danish Colorectal Cancer Group, Copenhagen, Denmark.

Received: 13 December 2021 Accepted: 17 March 2022

Published online: 06 April 2022

References

- Osterman E, Glimelius B. Recurrence risk after up-to-date colon cancer staging, surgery, and pathology: analysis of the entire Swedish population. *Dis Colon Rectum*. 2018;61:1016–25.

2. Klein M, Azaquoun N, Jensen BV, Gögenur I. Improved survival with early adjuvant chemotherapy after colonic resection for stage III colonic cancer: a nationwide study. *J Surg Oncol*. 2015;112:538–43.
3. Vogelstein B, Kinzler KW. Digital PCR. *Proc Natl Acad Sci U S A*. 1999;96:9236–41.
4. Togneri FS, Ward DG, Foster JM, Devall AJ, Wojtowicz P, Alyas S, et al. Genomic complexity of urothelial bladder cancer revealed in urinary cfDNA. *Eur J Hum Genet*. 2016;24:1167–74.
5. Momtaz P, Pentsova E, Abdel-Wahab O, Diamond E, Hyman D, Merghoub T, et al. Quantification of tumor-derived cell free DNA(cfDNA) by digital PCR (DigPCR) in cerebrospinal fluid of patients with BRAF_{V600} mutated malignancies. *Oncotarget*. 2016;7:85430–6.
6. Sriram KB, Relan V, Clarke BE, Duhig EE, Windsor MN, Matar KS, et al. Pleural fluid cell-free DNA integrity index to identify cytologically negative malignant pleural effusions including mesotheliomas. *BMC Cancer*. 2012;12:1–12.
7. Spindler K-LGL, Appelt ALL, Pallisgaard N, Andersen RFF, Brandslund I, Jakobsen A. Cell-free DNA in healthy individuals, noncancerous disease and strong prognostic value in colorectal cancer. *Int J Cancer*. 2014;135:2984–91.
8. Zhang Q, Raoof M, Chen Y, Sumi Y, Sursal T, Junger W, et al. Circulating mitochondrial DAMPs cause inflammatory responses to injury. *Nature*. 2010;464:104–7.
9. Islam MN, Bradley BA, Ceredig R. Sterile post-traumatic immunosuppression. *Clin Transl Immunol*. 2016;5:e77.
10. Shakhar G, Ben-Eliyahu S. Potential prophylactic measures against postoperative immunosuppression: could they reduce recurrence rates in oncological patients? *Ann Surg Oncol*. 2003;10:972–92.
11. Gögenur M, Burcharth J, Gögenur I. The role of total cell-free DNA in predicting outcomes among trauma patients in the intensive care unit: a systematic review. *Crit Care*. 2017;21:1–10. <https://doi.org/10.1186/s13054-016-1578-9>.
12. Henriksen TV, Reinert T, Christensen E, Sethi H, Birkenkamp-Demtröder K, Gögenur M, et al. The effect of surgical trauma on circulating free DNA levels in cancer patients-implications for studies of circulating tumor DNA. *Mol Oncol*. 2020;14:1670–9.
13. Dindo D, Demartines N, Clavien PA. Classification of surgical complications: a new proposal with evaluation in a cohort of 6336 patients and results of a survey. *Ann Surg*. 2004;240:205–13.
14. Spindler KLG, Pallisgaard N, Vogelius I, Jakobsen A. Quantitative cell-free DNA, KRAS, and BRAF mutations in plasma from patients with metastatic colorectal cancer during treatment with cetuximab and irinotecan. *Clin Cancer Res*. 2012;18:1177–85.
15. Demuth C, Spindler K-LG, Johansen JS, Pallisgaard N, Nielsen D, Hogdall E, et al. Measuring KRAS mutations in circulating tumor DNA by droplet digital PCR and next-generation sequencing. *Transl Oncol*. 2018;11:1220–4.
16. Wickham H, Henry L. tidy: Easily Tidy Data with "spread()" and "gather()" functions. 2018.
17. Wickham H, Francois R, Henry L, Müller K. dplyr: a grammar of data manipulation. 2017.
18. Wickham H. The split-apply-combine strategy for data analysis. *J Stat Softw*. 2011;40:1–29.
19. Canty A, Ripley BD. boot: Bootstrap R (S-Plus) Functions. 2019.
20. Davison AC, Hinkley DV. Bootstrap methods and their applications. Cambridge: Cambridge University Press; 1997.
21. Wickham H. ggplot2: elegant graphics for data analysis. New York: Springer; 2009.
22. Wilke CO. cowplot: streamlined plot theme and plot annotations for "ggplot2." 2017.
23. Ahlmann-Eltze C. ggsignif: significance brackets for "ggplot2." 2017.
24. Kassambara A. ggpubr: "ggplot2" based publication ready plots. 2017.
25. R Core Team. R: a language and environment for statistical computing. 2017.
26. Grolemund G, Wickham H. Dates and times made easy with {lubridate}. *J Stat Softw*. 2011;40:1–25.
27. Prakash K, Aggarwal S, Bhardwaj S, Ramakrishna G, Pandey CK. Serial perioperative cell-free DNA levels in donors and recipients undergoing living donor liver transplantation. *Acta Anaesthesiol Scand*. 2017;61:1084–94.
28. Fretland AA, Sokolov A, Postriganova N, Kazaryan AM, Pischke SE, Nilsson PH, et al. Inflammatory response after laparoscopic versus open resection of colorectal liver metastases: data from the Oslo-comet trial. *Med (United States)*. 2015;94:e1786.
29. Bettgeowda C, Sausen M, Leary RJ, Kinde I, Wang Y, Agrawal N, et al. Detection of circulating tumor DNA in early- and late-stage human malignancies. *Sci Transl Med*. 2014;6:224RA24.
30. Frank MO. Circulating cell-free DNA differentiates severity of inflammation. *Biol Res Nurs*. 2016;18:477–88.
31. Allendorf JDF, Bessler M, Horvath KD, Marvin MR, Laird DA, Whelan RL. Increased tumor establishment and growth after open vs laparoscopic surgery in mice may be related to differences in postoperative T-cell function. *Surg Endosc*. 1999;13:233–5.
32. Timmermans K, Kox M, Vaneker M, van Den Berg M, John A, van Laarhoven A, et al. Plasma levels of danger-associated molecular patterns are associated with immune suppression in trauma patients. *Intensive Care Med*. 2016;42:1–11.
33. Ørntoft M-BW, Jensen SØ, Øgaard N, Henriksen TV, Ferm L, Christensen IJ, et al. Age-stratified reference intervals unlock the clinical potential of circulating cell-free DNA as a biomarker of poor outcome for healthy individuals and patients with colorectal cancer. *Int J Cancer*. 2021;148:1665–75.
34. Hamford J, Guren TK, Dajani O, Johansen JS, Glimelius B, Sorbye H, et al. Total circulating cell-free DNA as a prognostic biomarker in metastatic colorectal cancer before first-line oxaliplatin-based chemotherapy. *Ann Oncol*. 2019;30:1088–95.

Publisher's Note

Springer Nature remains neutral with regard to jurisdictional claims in published maps and institutional affiliations.

Ready to submit your research? Choose BMC and benefit from:

- fast, convenient online submission
- thorough peer review by experienced researchers in your field
- rapid publication on acceptance
- support for research data, including large and complex data types
- gold Open Access which fosters wider collaboration and increased citations
- maximum visibility for your research: over 100M website views per year

At BMC, research is always in progress.

Learn more biomedcentral.com/submissions

