



Contents lists available at ScienceDirect

## International Journal of Surgery Case Reports

journal homepage: [www.casereports.com](http://www.casereports.com)

## Sigmoid colon carcinoma with focal neuroendocrine differentiation associated with ulcerative colitis: A case report



Kazuma Rifu<sup>a,\*</sup>, Koji Koinuma<sup>a</sup>, Hisanaga Horie<sup>a</sup>, Mitsuaki Morimoto<sup>a</sup>, Yoshihiko Kono<sup>a</sup>, Makiko Tahara<sup>a</sup>, Yasunaru Sakuma<sup>a</sup>, Yoshinori Hosoya<sup>a</sup>, Joji Kitayama<sup>a</sup>, Alan Kawarai Lefor<sup>a</sup>, Naohiro Sata<sup>a</sup>, Tsukasa Suzuki<sup>b</sup>, Noriyoshi Fukushima<sup>b</sup>

<sup>a</sup> Department of Surgery, Jichi Medical University, Japan

<sup>b</sup> Department of Pathology, Jichi Medical University, Japan

### ARTICLE INFO

#### Article history:

Received 25 February 2016

Received in revised form 1 April 2016

Accepted 18 April 2016

Available online 23 April 2016

#### Keywords:

Neuroendocrine tumor  
Ulcerative colitis  
Colorectal cancer  
Case report

### ABSTRACT

**INTRODUCTION:** Neuroendocrine tumors of the colon and rectum are relatively rare compared to sporadic colorectal carcinoma. There are few reports of neuroendocrine tumors of the colon and rectum in patients with ulcerative colitis.

**PRESENTATION OF CASE:** A patient with sigmoid colon carcinoma with focal neuroendocrine features is presented. A 32-year-old man, who had been followed for ulcerative colitis for 14 years, was found to have carcinoma of the sigmoid colon on routine annual colonoscopy, and he underwent laparoscopic total colectomy. Pathologic examination showed sigmoid colon adenocarcinoma with focal neuroendocrine features.

**DISCUSSION OF CASE:** Most colorectal carcinomas associated with inflammatory bowel disease are histologically similar to the sporadic type, and tumors with neuroendocrine features are very unusual.

**CONCLUSION:** Very rare case of sigmoid colon carcinoma with neuroendocrine features arising in a patient with UC was described.

© 2016 The Authors. Published by Elsevier Ltd. on behalf of IJS Publishing Group Ltd. This is an open access article under the CC BY-NC-ND license (<http://creativecommons.org/licenses/by-nc-nd/4.0/>).

## 1. Background

It is widely accepted that patients with ulcerative colitis have an increased risk of developing colorectal cancer. If epithelial dysplasia or carcinoma is diagnosed on surveillance colonoscopy, experts recommend elective colectomy [1]. The rates of malignant lymphoma and sarcoma have also been reported to be higher in patients with inflammatory diseases, although the etiology is not fully understood. A patient with a 14-year history of ulcerative colitis found to have sigmoid colon carcinoma with focal neuroendocrine differentiation is described. Neuroendocrine tumors (NET) in patients with UC have rarely been reported [2]. A literature review of previously reported patients is also presented.

## 2. Presentation of case

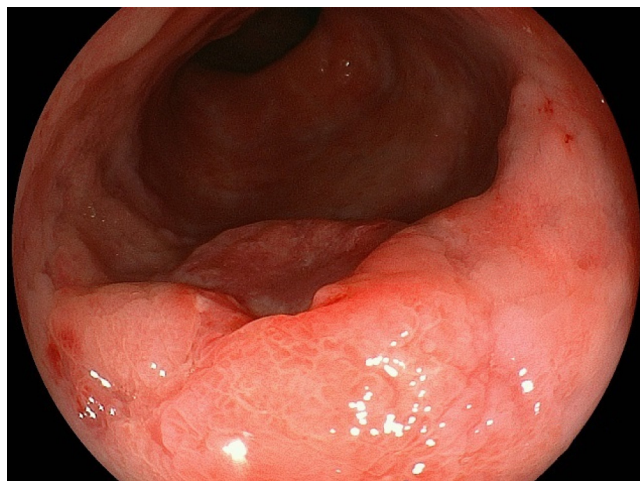
A 32-year-old male patient with a 14-year history of ulcerative colitis (UC), total colitis type, was followed at another hospital. The patient underwent steroid therapy for about two years, and stopped three years ago. Only 5-ASA was administered as maintenance therapy, and he was symptom-free for the last three years.

On annual colonoscopy, a slightly elevated 2-cm lesion with small central ulcer was seen in the sigmoid colon (Fig. 1). The surface of the lesion was irregular and the margin was unclear. The surrounding colonic mucosa was pale and rough, suggesting a quiescent phase of UC activity. Biopsies of the lesion showed well-differentiated tubular adenocarcinoma. Computed tomography (CT) showed partial wall thickening of the sigmoid colon with no lymphadenopathy or distant metastases. Laboratory data were normal, and tumor markers were not elevated. He was diagnosed with sigmoid colon carcinoma associated with UC, and laparoscopic-assisted total colectomy with an ileal pouch-anal anastomosis was performed. The patients' postoperative course was uneventful.

The histopathology of the specimen revealed a tubular adenocarcinoma invading to the muscularis propria (pMP) with focal neuroendocrine differentiation (Fig. 2a). Neuroendocrine features

\* Corresponding author at: Department of Surgery, Jichi Medical University Hospital, 1-3311 Yakushiji, Shimotsuke, Tochigi 329-0498, Japan.

E-mail addresses: [m03097kr@jichi.ac.jp](mailto:m03097kr@jichi.ac.jp), [kazuma.rifu@i.softbank.ne.jp](mailto:kazuma.rifu@i.softbank.ne.jp) (K. Rifu), [kjkoinum@jichi.ac.jp](mailto:kjkoinum@jichi.ac.jp) (K. Koinuma), [hisahorie@jichi.ac.jp](mailto:hisahorie@jichi.ac.jp) (H. Horie), [mittione2000@yahoo.co.jp](mailto:mittione2000@yahoo.co.jp) (M. Morimoto), [y.kono@jichi.ac.jp](mailto:y.kono@jichi.ac.jp) (Y. Kono), [kuritama@jichi.ac.jp](mailto:kuritama@jichi.ac.jp) (M. Tahara), [naruchan@jichi.ac.jp](mailto:naruchan@jichi.ac.jp) (Y. Sakuma), [hosoyo@jichi.ac.jp](mailto:hosoyo@jichi.ac.jp) (Y. Hosoya), [kitayama@jichi.ac.jp](mailto:kitayama@jichi.ac.jp) (J. Kitayama), [alefor@jichi.ac.jp](mailto:alefor@jichi.ac.jp) (A.K. Lefor), [sata@jichi.ac.jp](mailto:sata@jichi.ac.jp) (N. Sata).



**Fig. 1.** Colonoscopic image of a Type 3 tumor of the sigmoid colon.

were found in the marginal area of the tumor, (Figs. 2 b, 3 a) which stained positive for both Chromogranin A (Fig. 3b) and Synaptophysin (Fig. 3c) and negative for CD56 (Fig. 3d), Ki67 index was 50%. The mucosa from the sigmoid colon to the rectum appeared to be atrophic, macroscopically. There were fibrotic changes with increased lymphoid follicles in the submucosal layer microscopically, suggesting a long history of chronic inflammation secondary to UC. The malignant tumor in the sigmoid colon was consistent with a tumor arising from chronically inflamed colonic mucosa secondary to UC. Two of 15 regional lymph nodes were found to be positive (adenocarcinoma, pN1), and the lesion was diagnosed as stage IIIa according to the general rules of Japanese classification of colorectal carcinoma [3]. Capecitabine was given as adjuvant chemotherapy for six months. At three years follow-up, there was no evidence of recurrent disease.

### 3. Discussion

Patients with UC are at increased risk for developing colorectal carcinoma and dysplasia. The extent of colitis and duration of the disease are the most important risk factors for the development of colorectal carcinoma [4].

However, patients with NET associated with inflammatory bowel disease have rarely been reported [2,5]. A literature search including papers published from 1980 to 2015 showed only 13 patients with NET associated with UC (Table 1). Patients in whom the carcinoid tumor was not directly associated with a dysplasia-associated lesion or mass or adenocarcinoma in UC (colitic cancer) were excluded, because carcinoid tumors can be diagnosed sporadically. Most patients had a long history of UC (median 15 years). Ten of 13 lesions were found in the recto-sigmoid, and five patients had distant metastases at the time of diagnosis. Three patients died from the disease within 15 months, although eight reports did not mention the outcome. These findings suggest a higher malignant potential of the disease compared to typical colitic carcinoma associated with UC. Risk factors are the same as colitic carcinoma including a long duration of mucosal inflammation and pan-colitis type of UC.

Dysplasia-associated lesions or masses (DALM) are elevated areas known to have an increased risk for the development of adenocarcinoma in UC. DALMs and inflammatory polyps are occasionally seen on surveillance colonoscopy in patients with UC [4,13]. A DALM does not appear like a typical adenomatous polyp, but often has a different appearance such as flat, granular, depressed and others [13]. In contrast, neuroendocrine tumors of

the colon and rectum usually appear as a submucosal tumor in the early stages [14], and as type 2 or type 3 lesions in advanced stages. In this patient, the tumor showed a slightly elevated lesion with small central ulcer, and the margin was unclear. These findings were unusual for sporadic colorectal carcinoma.

Based on the 2010 World Health Organization classification, NET is stratified into two types, neuroendocrine carcinoma and mixed adeno-neuroendocrine carcinoma (MANEC), according to the proportion of neuroendocrine cells and adenocarcinoma cells. MANEC is defined as a lesion with more than 30% neuroendocrine cells. In this patient, the proportion of cells with neuroendocrine features was less than 30%, meaning a diagnosis of NET (or colorectal carcinoma with focal neuroendocrine feature), not MANEC [15].

As for NET in the gastrointestinal tract, cisplatin/etoposide is a standard chemotherapy regimen [16]. However, most NETs in the colon and rectum were MANEC in our previous study [17]. MANEC has a greater component of adenocarcinoma elements, and the efficacies of both Irinotecan/Cisplatin and 5-Fluorouracil based chemotherapy have been reported for some patients with MANEC [17]. Adjuvant chemotherapy for patients with MANEC should also be considered because some reports indicated its effectiveness [17,18]. In the present patient, all metastatic lymph nodes appeared to be adenocarcinoma, and capecitabine was given as adjuvant therapy for six months. He has been free of recurrence for three years. It is not yet clear which chemotherapy regimen is most effective in patients with MANEC (or colorectal cancer with neuroendocrine features), because few cases have been reported.

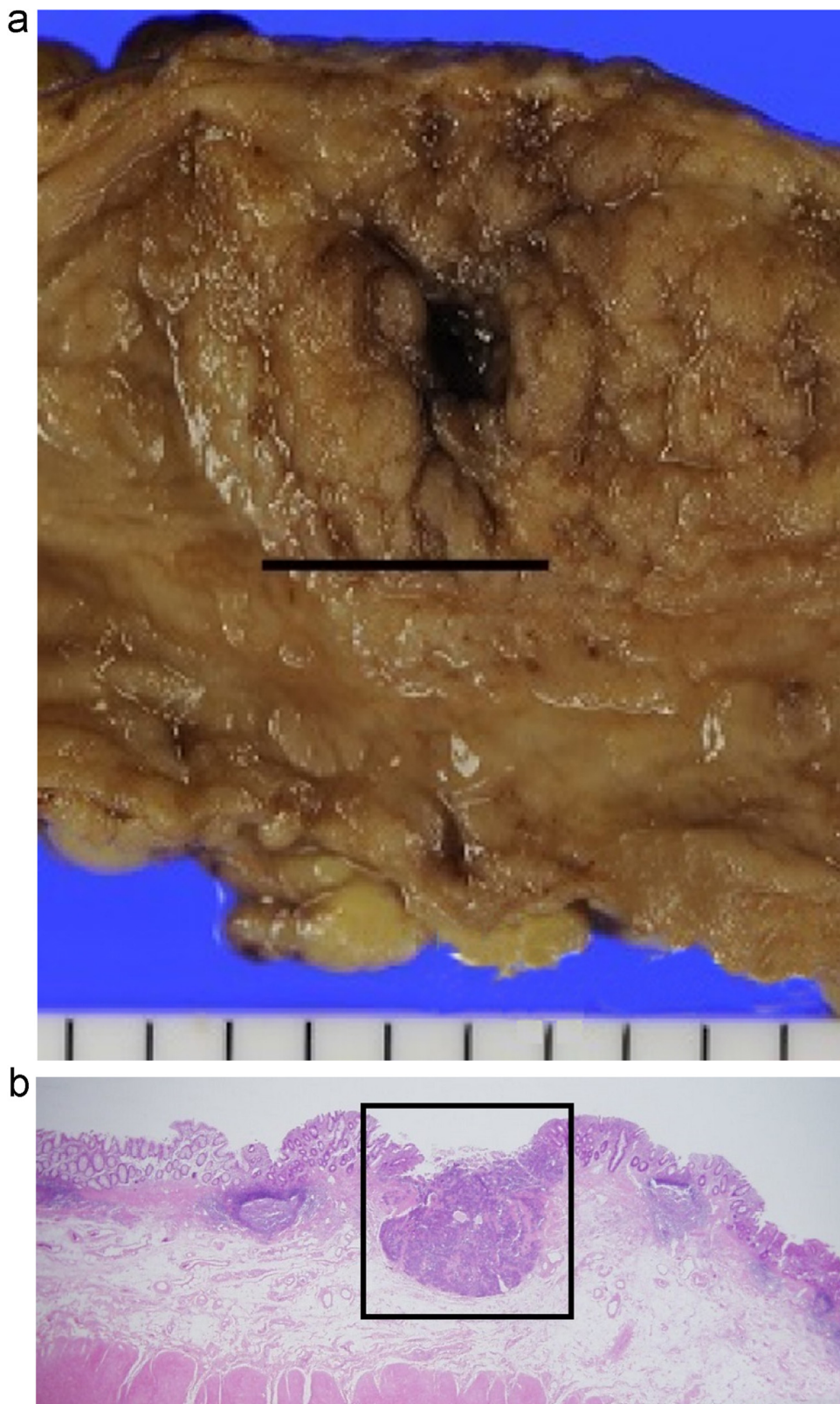
Although colorectal carcinomas are the most frequent tumors found in patients with IBD, other types of tumors have been associated with inflammatory bowel disease, such as lymphoma and sarcoma. One hypothesis is that chronic inflammation of the colonic mucosa may cause pancellular damage involving epithelial, goblet, Paneth and neuroendocrine cells, resulting in pancellular dysplasia [5]. It has been also hypothesized that the development of neuroendocrine tumors may be secondary to distant secretion of cytokines (transforming growth factor alpha, proinflammatory cytokines, interferon gamma, tumor necrosis factor alpha, and interleukins) [19]. The combination of both inflammation-related pancellular dysplasia and secretion of systemic mediators may partially explain the development of neuroendocrine tumors in IBD patients. Serum Chromogranin A has been reported to be elevated in patients with advanced disease and those who have elevated at diagnosis. Following serum Chromogranin A levels in patients with advanced neuroendocrine tumors is recommended by the North American Neuroendocrine Tumor Society (NANETS) [20].

**Table 1**

Previously reported patients with NET associated with UC.

Patient	Age(y)/Gender	Duration (y)	Extent	Indication	Status	Site	Differentiation	Depth of invasion	Dysplasia	Metastases	Refs.
1	67/M	50	Limited colitis	Dysplasia	NED; 14 months	Rectum	Carcinoid	Submucosa	Adjacent HGD	NK	[2]
2	44/M	15	Pancolitis	AdenoCa	DOD; 11 months	Rectum	Mixed	Transmural	Adjacent HGD	NK	[2]
3	52/M	10	Pancolitis	Dysplasia	NK	Sigmoid Colon	Mixed	Muscularis propria	Adjacent and distant HGD	NK	[2]
4	35/M	11	Mild distal colitis	NET	DOD; 15 months	Rectum	Large cell NEC	NK	NK	NK	[5]
5	77/M	27	Left sided colitis	NET	NK	Anorectal junction	Small cell NEC	Unknown	NK	NK	[5]
6	32/M	15	Pancolitis	NK	NK	Spleen	Mixed	Unknown	NK	Yes	[6]
7	56/M	26	Pancolitis	Stricture	DOD; 10 months	Sigmoid Colon	Small cell NEC	Unknown	None	Yes	[7]
8	55/M	42	Not stated	NK	NK	Rectal stump	Atypical carcinoid	Unknown	Adjacent HGD and multifocal LGD	NK	[8]
9	66/F	26	Pancolitis	NK	NK	Rectum	Adenocarcinoid	Unknown	Adjacent and distant	Yes	[9]
10	50/M	0	NK	NK	NK	Rectum (multifocal)	Carcinoid	NK	Multifocal HGD	NK	[10]
11	25/F	13	NK	NK	NK	Splenic	Atypical	NK	Multiple foci	Yes	[11]
12	32/M	16	Pancolitis	NK	NK	Cecum (multifocal)	"Malignant" carcinoid	unknown	NK	Yes	[12]
13	32/M	14	Pancolitis	AdenoCa	NED; 36 months	Sigmoid Colon	mixed	MP	Adjacent HGD	NK	Present patient

AdenoCa: Adenocarcinoma. DOD: Dead of Disease. F: Female. HGD: High Grade Dysplasia. LGD: Low Grade Dysplasia. M: Male. NED: No Evidence of Disease. NET: Neuroendocrine Tumor. NK: Not Known/Not Reported.

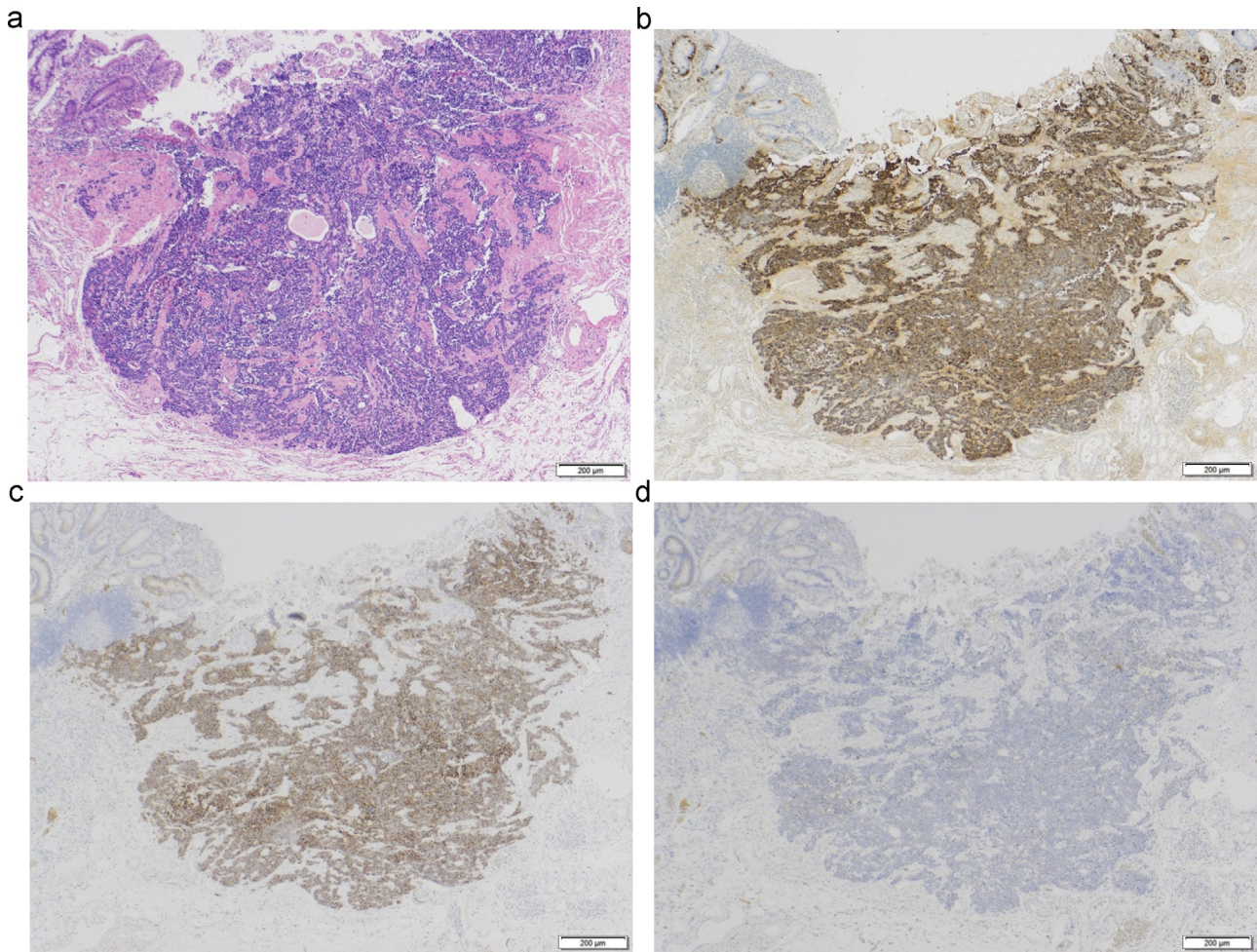


**Fig. 2.** (a) Gross pathology of a resected Type 3 tumor of the sigmoid colon. Black line is the section b. (b) Microscopic image of the section with focal neuroendocrine features. (H&E, 1.25 $\times$ ) Focal neuroendocrine features was seen in the area of the black square (Fig. 3a–d).

#### 4. Conclusion

A very rare case of sigmoid colon carcinoma with neuroendocrine features arising in a patient with UC was described.

Evaluation of more patients is needed to define an optimal treatment strategy for patients with this disease.



**Fig. 3.** (a) Microscopic image showing focal neuroendocrine features (H&E, 4×). (b) Chromogranin stain in the area of focal neuroendocrine features (4×). (c) Synaptophysin stain in the area of focal neuroendocrine features (4×). (d) CD56 stain in the area of focal neuroendocrine features(4×).

**Consent**

We received approval from the ethics committee, and got informed consent of the patient.

**Conflict of interest**

All authors declare no conflicts of interest or financial support.

**Sources of funding**

I have no funding for my research.

**Ethical approval**

Approval has been given from the Jichi Medical University Hospital ethics committee.

**Author contribution**

All contributors are listed in as the authors.

**Guarantor**

Koji Koinuma.

**References**

- [1] A. Windsor, P. Michetti, W. Bemelman, The positioning of colectomy in the treatment of ulcerative colitis in the era of biologic therapy, *Inflamm. Bowel Dis.* 19 (Nov (12)) (2013) 2695–2703.
- [2] E.S. Jessica, John R. Goldblum, Neuroendocrine neoplasms arising in inflammatory bowel disease: a report of 14 cases, *Mod. Pathol.* 11 (1998) 537–542.
- [3] Japanese Classification of Colorectal Carcinoma 2nd edition.
- [4] M.O. Blackstone, R.H. Riddell, B.H. Rogers, et al., Dysplasia-associated lesion or mass (DALM) detected by colonoscopy in long-standing ulcerative colitis: an indication for colectomy, *Gastroenterology* 80 (Feb (2)) (1981) 366–374.
- [5] R.1 Grassia, P. Bodini, P. Dizioli, Neuroendocrine carcinomas arising in ulcerative colitis: coincidences or possible correlations? *World J. Gastroenterol.* 15 (33) (2009) 4193–4195.
- [6] A.P. Lyss, J.J. Thompson, J.H. Glick, Adenocarcinoid tumor of the colon arising in preexisting ulcerative colitis, *Cancer* 48 (1981) 833–839.
- [7] R.M. Marchioni Beery, T.J. Devers, J.M. Clement, A case of primary colonic small-cell carcinoma arising in a patient with long-standing ulcerative colitis, *Gastrointest. Cancer Res.* 7 (3–4) (2014) 119.
- [8] S.M. Dodd, Chronic ulcerative colitis complicated by atypical carcinoid tumour, *J. Clin. Pathol.* 39 (1986) 913–916.
- [9] A. Gledhill, P.A. Hall, J.P. Cruse, Enteroendocrine cell hyperplasia, carcinoid tumours and adenocarcinoma in long-standing ulcerative colitis, *Histopathology* 10 (1986) 501–508.
- [10] B.1 McNeely, D.A. Owen, M. Pezim, Multiple microcarcinoids arising in chronic ulcerative colitis, *Am. J. Clin. Pathol.* 98 (1992) 112–116.
- [11] R.R. Miller, H.W. Sumner, Argrophilic cell hyperplasia and an atypical carcinoid tumor in chronic ulcerative colitis, *Cancer* 50 (1982) 2920–2925.
- [12] D.A. Owen, W.S. Hwang, R.H. Thorlakson, et al., Malignant carcinoid tumor complicating chronic ulcerative colitis, *Am. J. Clin. Pathol.* 76 (1981) 333–338.
- [13] V. Hernández, J. Clofent, Intestinal cancer in inflammatory bowel disease: natural history and surveillance guidelines, *Ann. Gastroenterol.* 25 (2012) 193–200.

- [14] Japanese guideline of pancreas and gastrointestinal tract NETs (2015).
- [15] S. La Rosa, A. Marando, F. Sessa, Mixed adenoneuroendocrine carcinomas (MANECs) of the gastrointestinal tract: an update, *Cancers* 4 (2012) 11–30.
- [16] P.E.1 Bernick, D.S. Klimstra, J. Shia, Neuroendocrine carcinomas of the colon and rectum, *Dis. Colon Rectum* 47 (2004) 163–169.
- [17] T. Komatsubara, K. Koinuma, Y. Miyakura et al, Endocrine cell carcinomas of the colon and rectum: a clinicopathological evaluation, *Clin. J. Gastroenterol.* (Dec (23)) (2015) (Epub ahead of print).
- [18] L. Vanacker, D. Smeets, A. Hoorens, Mixed adenoneuroendocrine carcinoma of the colon: molecular pathogenesis and treatment, *Anticancer Res.* 34 (Oct (10)) (2014) 5517–5521.
- [19] M. Barral, A. Dohan, M. Allez, et al., Gastrointestinal cancers in inflammatory bowel disease: an update with emphasis on imaging findings, *Crit. Rev. Oncol. Hematol.* 97 (2016) 30–46.
- [20] P.L.1 Kunz, D. Reidy-Lagunes, L.B. Anthony, Consensus guidelines for the management and treatment of neuroendocrine tumors, *Pancreas* 42 (4) (2013) 557–577.

#### Open Access

This article is published Open Access at [sciedirect.com](http://sciedirect.com). It is distributed under the [IJSCR Supplemental terms and conditions](#), which permits unrestricted non commercial use, distribution, and reproduction in any medium, provided the original authors and source are credited.