



Palbociclib plus letrozole as first-line therapy in estrogen receptor-positive/human epidermal growth factor receptor 2-negative advanced breast cancer with extended follow-up

H. S. Rugo¹ · R. S. Finn² · V. Diéras^{3,4} · J. Ettl⁵ · O. Lipatov⁶ · A. A. Joy⁷ · N. Harbeck⁸ · A. Castellon⁹ · S. Iyer¹⁰ · D. R. Lu¹¹ · A. Mori¹² · E. R. Gauthier¹³ · C. Huang Bartlett¹⁴ · K. A. Gelmon¹⁵ · D. J. Slamon²

Received: 21 December 2018 / Accepted: 26 December 2018 / Published online: 10 January 2019
© The Author(s) 2019

Abstract

Purpose In the initial PALOMA-2 (NCT01740427) analysis with median follow-up of 23 months, palbociclib plus letrozole significantly prolonged progression-free survival (PFS) in women with estrogen receptor-positive (ER+)/human epidermal growth factor receptor 2-negative (HER2-) advanced breast cancer (ABC) [hazard ratio (HR) 0.58; $P < 0.001$]. Herein, we report results overall and by subgroups with extended follow-up.

Methods In this double-blind, phase 3 study, post-menopausal women with ER+/HER2- ABC who had not received prior systemic therapy for their advanced disease were randomized 2:1 to palbociclib-letrozole or placebo-letrozole. Endpoints include investigator-assessed PFS (primary), safety, and patient-reported outcomes (PROs).

Results After a median follow-up of approximately 38 months, median PFS was 27.6 months for palbociclib-letrozole ($n = 444$) and 14.5 months for placebo-letrozole ($n = 222$) (HR 0.563; 1-sided $P < 0.0001$). All subgroups benefited from palbociclib treatment. The improvement of PFS with palbociclib-letrozole was maintained in the next 2 subsequent lines of therapy and delayed the use of chemotherapy (40.4 vs. 29.9 months for palbociclib-letrozole vs. placebo-letrozole). Safety data were consistent with the known profile. Patients' quality of life was maintained.

Conclusions With approximately 15 months of additional follow-up, palbociclib plus letrozole continued to demonstrate improved PFS compared with placebo plus letrozole in the overall population and across all patient subgroups, while the safety profile remained favorable and quality of life was maintained. These data confirm that palbociclib-letrozole should be considered the standard of care for first-line therapy in patients with ER+/HER2- ABC, including those with low disease burden or long disease-free interval. Sponsored by Pfizer; ClinicalTrials.gov: NCT01740427.

Keywords Breast cancer · ER+ · HER2- · Cyclin-dependent kinase inhibitor · Palbociclib · Letrozole

Abbreviations

ABC	Advanced breast cancer	ECOG PS	Eastern Cooperative Oncology Group performance status
AE	Adverse event	EFS	Event-free survival
BC	Breast cancer	ET	Endocrine therapy
BICR	Blinded independent central review	FACT-B	Functional Assessment of Cancer Therapy-Breast
CDK4/6	Cyclin-dependent kinase 4/6	FACT-G	Functional Assessment of Cancer Therapy-General
DFI	Disease-free interval	FALCON	Fulvestrant and Anastrozole Compared in Hormonal Therapy Naive Advanced Breast Cancer
		HER2-	Human epidermal growth factor receptor 2-negative
		HR	Hazard ratio
		HR+	Hormone receptor-positive
		HRQOL	Health-related quality of life

Electronic supplementary material The online version of this article (<https://doi.org/10.1007/s10549-018-05125-4>) contains supplementary material, which is available to authorized users.

✉ H. S. Rugo
hope.rugo@ucsf.edu

Extended author information available on the last page of the article

IA	Investigator assessed
ITT	Intent-to-treat
LET	Letrozole
MedDRA	Medical Dictionary for Regulatory Activities
NE	Not estimable
NR	Not reached
PAL	Palbociclib
PBO	Placebo
PFS	Progression-free survival
PRO	Patient-reported outcome
SAE	Serious adverse event
STEPP	Subpopulation treatment effect pattern plot
TFI	Treatment-free interval
TOI	Trial Outcome Index

Introduction

Endocrine therapy has been the primary first-line treatment for hormone receptor-positive (HR+)/human epidermal growth factor receptor 2-negative (HER2–) advanced breast cancer (ABC) [1–3]. Recently, guidelines have expanded to include the addition of a cyclin-dependent kinase 4/6 (CDK4/6) inhibitor in combination with endocrine therapy for the treatment of pre-menopausal/post-menopausal women with HR+/HER2– ABC [1–3].

In the PALOMA-2 study, palbociclib-letrozole significantly prolonged progression-free survival (PFS) versus placebo-letrozole [median PFS, 24.8 vs. 14.5 months, respectively; hazard ratio [HR], 0.576 (95% CI 0.463–0.718); $P < 0.0001$] [4, 5]. The primary analysis was conducted after a median 23 months of follow-up (data cut-off: February 26, 2016), with the investigators and patients remaining blinded to treatment assignments. Because patients with HR+/HER2– ABC receiving first-line therapy have diverse clinical and molecular presentations (e.g., de novo versus recurrent disease, visceral versus bone-only), response to endocrine-based therapy could be prolonged in a particular subgroup. Therefore, it is important to analyze the long-term efficacy of treatment with extended follow-up in different patient subgroups.

Currently, PALOMA-2 has the longest follow-up of any phase 3 study investigating CDK4/6 inhibitors for HR+/HER2– disease. In this report, we present updated efficacy, safety, and patient-reported outcome (PRO) results for the overall PALOMA-2 study population and across subgroups after extended patient follow-up. This study is ongoing to collect overall survival data.

Methods

Study design, treatment, and patient eligibility criteria

Eligibility criteria and study design details were reported previously [4]. PALOMA-2 was a double-blind, international, phase 3 study in which women with estrogen receptor-positive (ER+)/HER2– advanced breast cancer were randomized 2:1 to receive letrozole 2.5 mg/day continuously and either palbociclib (125 mg/day, 3 weeks on followed by 1 week off of a 4-week cycle) or matching placebo. The study protocol was reviewed and approved by institutional review boards/independent ethics committees at each site (Table S1) and was conducted in accordance with Good Clinical Practice principles and the Declaration of Helsinki. Informed consent was obtained from all individual participants included in the study.

Endpoints and assessments

The study's primary endpoint was investigator-assessed PFS, defined as the time from date of randomization to the date of first documented objective disease progression (per Response Evaluation Criteria in Solid Tumors, v1.1) or death due to any cause, whichever occurred first. A blinded, independent central review of all patients was performed in a third party facility. Secondary endpoints included patient-reported outcomes (PROs), pharmacokinetics, and safety assessments. Subgroup analyses by baseline characteristics were pre-specified. Patient-reported breast cancer-specific health-related quality of life (HRQOL) was assessed using the Functional Assessment of Cancer Therapy-Breast (FACT-B) completed on-site at baseline (day 1 of cycle 1), day 1 of cycles 2 and 3, and day 1 of every other cycle from cycle 5 until progression or end of treatment [6–8]. Adverse events (AEs) were recorded during study treatment until 28 days after the last treatment dose. AEs were graded for severity according to the National Cancer Institute Common Terminology Criteria for Adverse Events version 4.0 and classified according to Medical Dictionary for Regulatory Activities (MedDRA, v20.0).

In addition to these endpoints, time to initiation of subsequent anticancer therapies (including chemotherapy) was assessed in the overall study population as an exploratory analysis to investigate whether palbociclib-letrozole treatment affected subsequent therapies. The time to initiation of subsequent therapy was defined as the time from randomization to the start date of subsequent systemic anticancer therapy or death from any cause, whichever occurred first.

Statistical analyses

Progression-free survival was evaluated in the overall intent-to-treat (ITT) population and in preplanned subgroups defined by their baseline characteristics. Time to subsequent therapies was evaluated in the ITT population. The Kaplan–Meier method was used to estimate median PFS and time to subsequent systemic anticancer therapies (including chemotherapy) by treatment arm. Hazard ratios for PFS and time to first and second subsequent systemic anticancer therapies were estimated from the Cox proportional hazards model with a 95% CI; 1-sided *P* values were from the log-rank test. No adjustments were made for multiple testing. Repeated-measures mixed effects models were used to assess the effect on changes from baseline in patient-reported quality of life using intercept term, treatment, time, treatment-by-time, and baseline as covariates. A subpopulation treatment effect pattern plot (STEPP) [9] analysis was performed to explore whether PFS benefit was affected by a patient's treatment-free interval (TFI) at baseline, where TFI (equivalent to the protocol-defined disease-free interval [DFI]) was defined as the time from the end of (neo)adjuvant therapy to disease progression. AE data were analyzed for patients who received ≥ 1 dose of study drug.

Results

Patients

From February 2013 through July 2014, 666 post-menopausal women were enrolled and randomly assigned to receive palbociclib-letrozole ($n=444$) or placebo-letrozole ($n=222$) (Fig. S1). Demographics and baseline disease characteristics were well balanced between treatment arms and similar to that previously reported [4] (Table S2). Exposure to palbociclib or placebo is summarized in Table S3.

Efficacy

At the new data cut-off date (May 31, 2017), median (interquartile range) follow-up was 37.6 (37.2–38.0) months in the palbociclib-letrozole arm and 37.3 (36.3–37.9) months in the placebo-letrozole arm. Investigator-assessed PFS was significantly longer with palbociclib-letrozole versus placebo-letrozole in the ITT population, with a median of 27.6 months (95% CI 22.4–30.3) versus 14.5 months (12.3–17.1), respectively [HR, 0.563 (95% CI 0.461–0.687); $P < 0.0001$] (Fig. 1a). This improvement in PFS with palbociclib was supported by the results of the updated blinded independent central review: median PFS 35.7 months (95% CI 27.7–38.9) versus 19.5 months (16.6–26.6), respectively [HR, 0.611 (95% CI 0.485–0.769); $P < 0.0001$].

Median PFS was also longer with palbociclib-letrozole across all subgroups examined (Fig. 1b). Notably, a substantial benefit in PFS with palbociclib-letrozole was observed for patients with a low disease burden such as non-measurable disease (4% visceral), bone-only disease, or single disease site. For patients with non-visceral disease who did not receive prior endocrine therapy, the median PFS exceeded 3 years with palbociclib-letrozole (Figs. 1b, 2). In addition, the magnitude of the PFS benefit from palbociclib-letrozole versus placebo-letrozole was consistent, regardless of baseline TFI or whether patients had received prior endocrine therapy (Figs. S2 and 1b).

Subpopulation treatment effect pattern plot analysis

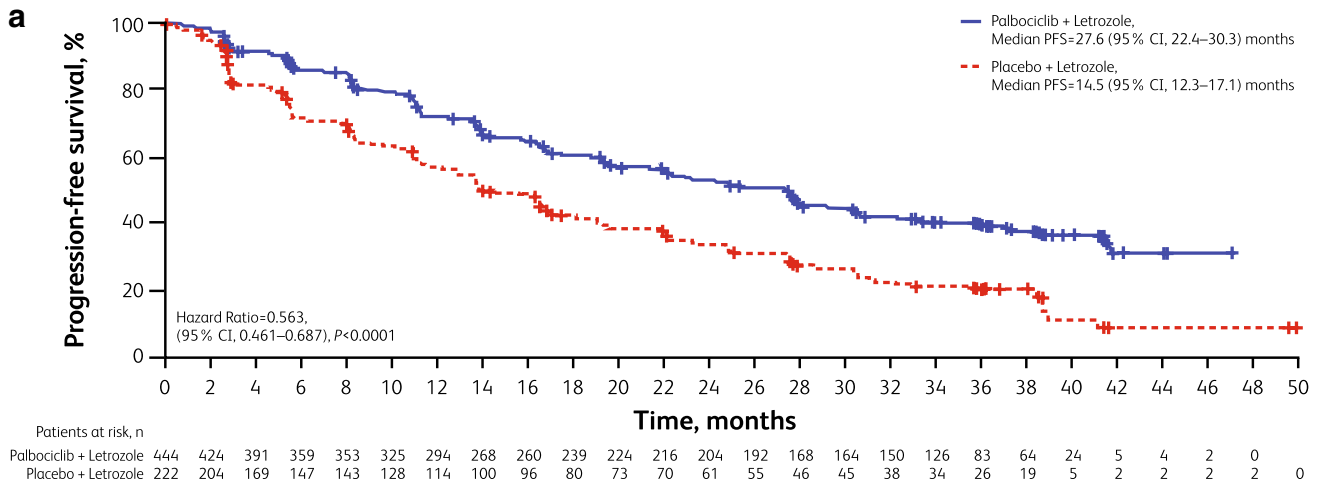
To better understand whether the PFS treatment effect is influenced by baseline TFI, we performed a STEPP analysis in patients who had received (neo)adjuvant endocrine therapy. The treatment effect of PFS was generally consistent regardless of TFI (Fig. S3). No TFI cut-off changed the clinical benefit (Fig. S2).

Time to subsequent anticancer therapies

To explore whether the combination therapy had a potential impact on subsequent line therapies after permanent palbociclib discontinuation, analyses of time to initiation of first and second subsequent therapies were conducted. Median time from randomization to the initiation of the first subsequent therapy was 28.0 (95% CI 23.6–29.6) versus 17.7 (14.3–21.5) months with palbociclib-letrozole versus placebo-letrozole (Fig. 3a). The second subsequent systemic anticancer therapy was also significantly delayed in the palbociclib-letrozole arm compared with the placebo-letrozole arm at 38.8 (95% CI, 34.4–not estimable) months versus 28.8 (25.7–33.5) months, respectively (Fig. 3b). In both analyses, the 10 month difference in PFS benefit from palbociclib observed in the primary PFS analysis was preserved, suggesting that the treatment benefit of the first subsequent therapy was not compromised by palbociclib. The median time to first-line subsequent chemotherapy was 40.4 (34.7–47.3) months versus 29.9 months (25.6–35.1) for patients treated with palbociclib-letrozole versus placebo-letrozole (Fig. 3c).

Types of first subsequent therapy

Among 227 palbociclib-letrozole patients and 150 placebo-letrozole patients who received subsequent systemic anticancer therapies after permanent study treatment discontinuation, endocrine therapy was the most common first subsequent treatment in patients from both arms (60.8% and 58.0%, respectively), followed by chemotherapy (36.6% and



b

Baseline Factors	PAL + LET		PBO + LET		PAL + LET vs PBO + LET		P ^a
	Patients, n (%)	mPFS (95% CI)	Patients, n (%)	mPFS (95% CI)	HR (95% CI)		
All randomized patients, IA	444 (100)	27.6 (22.4–30.3)	222 (100)	14.5 (12.3–17.1)	0.56 (0.46–0.69)	<0.0001	
All randomized patients, BICR	444 (100)	35.7 (27.7–38.9)	222 (100)	19.5 (16.6–26.6)	0.61 (0.49–0.77)	<0.0001	
Visceral disease	214 (48.2)	19.3 (16.4–24.2)	110 (49.5)	12.3 (8.4–16.4)	0.62 (0.47–0.81)	<0.0005	
Nonvisceral disease	230 (51.8)	35.9 (27.7–NE)	112 (50.5)	17.0 (13.8–24.8)	0.50 (0.37–0.67)	<0.0001	
Bone-only disease	103 (23.2)	36.2 (27.6–NE)	48 (21.6)	11.2 (8.2–22.0)	0.41 (0.26–0.63)	<0.0001	
No bone-only disease ^b	341 (76.8)	24.2 (19.4–27.7)	174 (78.4)	14.5 (12.9–18.5)	0.62 (0.50–0.78)	<0.0001	
TFI ^c >12 mo	179 (40.3)	30.3 (24.8–NE)	93 (41.9)	13.8 (8.8–18.2)	0.55 (0.40–0.76)	<0.0005	
TFI ^c ≤12 mo	98 (22.1)	16.6 (13.9–24.2)	48 (21.6)	11.0 (5.6–12.9)	0.48 (0.32–0.72)	<0.0005	
TFI ^c >2 y	154 (34.7)	38.5 (27.5–NE)	77 (34.7)	16.6 (13.7–23.5)	0.52 (0.36–0.75)	<0.0005	
TFI ^c >5 y	90 (20.3)	38.6 (27.6–NE)	46 (20.7)	23.5 (16.3–32.2)	0.60 (0.36–1.00)	<0.05	
TFI ^c >10 y	32 (7.2)	NR (30.4–NE)	23 (10.4)	23.5 (16.6–NE)	0.44 (0.19–1.03)	<0.05	
De novo metastatic	167 (37.6)	27.9 (22.1–33.4)	81 (36.5)	22.0 (13.9–27.4)	0.61 (0.44–0.85)	<0.005	
TFI from prior ET >12 mo	156 (35.1)	27.6 (22.2–38.6)	78 (35.1)	13.8 (8.2–16.6)	0.58 (0.41–0.82)	<0.001	
TFI from prior ET ≤12 mo	94 (21.2)	16.6 (13.9–24.2)	48 (21.6)	11.0 (5.6–12.9)	0.49 (0.33–0.73)	<0.0005	
Measurable disease	338 (76.1)	23.7 (19.3–27.6)	171 (77.0)	14.5 (12.3–18.5)	0.63 (0.50–0.79)	<0.0001	
Nonmeasurable disease ^d	106 (23.9)	36.2 (27.6–NE)	51 (23.0)	16.5 (8.3–19.6)	0.39 (0.25–0.60)	<0.0001	
No prior ET with visceral disease	86 (19.4)	23.7 (16.8–30.3)	47 (21.2)	13.9 (10.2–22.2)	0.55 (0.36–0.85)	<0.005	
No prior ET without visceral disease	108 (24.3)	36.2 (27.9–NE)	49 (22.1)	27.6 (19.1–35.6)	0.59 (0.38–0.92)	<0.01	
Prior ET	250 (56.3)	24.2 (18.8–27.6)	126 (56.8)	11.2 (8.4–14.5)	0.54 (0.42–0.71)	<0.0001	
No prior ET	194 (43.7)	30.3 (24.5–35.7)	96 (43.2)	21.9 (15.9–27.4)	0.59 (0.43–0.80)	<0.0005	
Prior chemotherapy	213 (48.0)	24.8 (19.3–27.9)	109 (49.1)	12.9 (9.6–16.5)	0.53 (0.40–0.71)	<0.0001	
No prior chemotherapy	231 (52.0)	27.9 (23.2–33.4)	113 (50.9)	18.5 (13.6–24.8)	0.59 (0.45–0.79)	<0.0005	
Disease site, 1	138 (31.1)	30.4 (24.8–NE)	66 (29.7)	16.5 (11.0–22.1)	0.52 (0.36–0.75)	<0.0005	
Disease sites, 2	117 (26.4)	28.1 (19.4–NE)	52 (23.4)	16.3 (11.0–27.4)	0.57 (0.37–0.89)	<0.01	
Disease sites, ≥3	189 (42.6)	23.7 (19.2–27.6)	104 (46.8)	13.8 (8.8–17.0)	0.61 (0.46–0.82)	<0.0005	
ECOG PS 0	257 (57.9)	27.9 (24.9–36.2)	102 (45.9)	19.3 (14.5–24.9)	0.65 (0.48–0.87)	<0.005	
ECOG PS 1/2	187 (42.1)	22.2 (16.6–27.7)	120 (54.1)	11.8 (8.3–16.5)	0.51 (0.39–0.68)	<0.0001	
Age <65 y	263 (59.2)	23.2 (19.3–27.6)	141 (63.5)	13.7 (11.0–16.6)	0.55 (0.43–0.70)	<0.0001	
Age ≥65 y	181 (40.8)	30.6 (27.6–NE)	81 (36.5)	19.1 (11.0–30.4)	0.60 (0.43–0.86)	<0.005	

0 0.1 0.2 0.3 0.4 0.5 0.6 0.7 0.8 0.9 1.0 1.1

← Favours PAL + LET | Favours PBO + LET →

Fig. 1 a Investigator-assessed progression-free survival (ITT population). **b** Forest plot of investigator-assessed PFS overall and across subgroups (ITT population). *BICR* blinded independent central review, *ECOG PS* Eastern Cooperative Oncology Group performance status, *ET* endocrine therapy, *HR* hazard ratio, *IA* investigator assessed, *ITT* intent-to-treat, *LET* letrozole, *PFS* progression-free survival, *NE* not estimable, *NR* not reached, *PAL* palbociclib, *PBO* placebo, *TFI* treatment-free interval. a: 1-sided *P* value from the log-rank test. b: Per tumor site. c: Protocol-defined disease-free interval is equivalent to TFI in this analysis and refers to TFI since completion of prior (neo)adjuvant therapy and onset of metastatic disease or disease recurrence. d: A few patients initially enrolled as having measurable disease were later found to have non-measurable disease beyond bone-only disease

34.0%; Table S4). Some patients received a second subsequent therapy; common second therapies are listed in Table S5.

Safety

With the additional 15 months of follow-up, no new safety signals were observed for palbociclib-letrozole. Over the entire study period, permanent discontinuation because of all-causality treatment-emergent AEs occurred in 54 (12.2%) patients in the palbociclib arm and 13 (5.9%) in the placebo arm. Neutropenia was the most frequently reported any-grade AE with palbociclib-letrozole (81.8% vs 6.3% with placebo-letrozole) (Table S6). Most events in the palbociclib-letrozole arm were of grade 3 severity (57.4%); however, neutropenia rarely led to permanent study discontinuation ($n=8$ [1.8%]), and febrile neutropenia was rare ($n=9$ [2.0%]). Treatment-emergent serious AEs (SAEs) of any cause occurred in 23.6% of palbociclib-letrozole patients and 15.3% of placebo-letrozole patients. Infections were the most commonly reported SAE in both arms (5.2% and 4.1%, respectively).

Patient-reported outcomes

Patient-reported HRQOL as assessed by the FACT-B total score was maintained with palbociclib-letrozole. The overall change from baseline in FACT-B total scores was not significantly different ($P=0.629$) between the palbociclib-letrozole and placebo-letrozole arms. No statistically significant differences were observed between the treatment arms in change from baseline scores for any of the subscales assessed (Fig. 4a). The results for patient-reported HRQOL were consistent across all subgroups, including patients with bone-only disease and long TFI (Fig. 4b).

Discussion

Single-agent sequential endocrine therapy, which is associated with less drug toxicity than chemotherapy, has been the recommended standard of care for HR+/HER2– ABC in the

first-line setting [1–3]; however, resistance to single-agent endocrine therapy and relapse over time are inevitable. As such, further research is warranted on the inclusion of targeted agents in endocrine-based therapy to delay resistance and prolong the window of endocrine sensitivity. Following the positive results from the PALOMA-1, -2, and -3 studies [4, 10, 11], MONALEESA-2, -3, and -7 [12, 13], and the MONARCH 2 and 3 studies [14, 15], the international treatment guidelines now include recommendations for the use of CDK4/6 inhibitors in combination with endocrine therapy for the treatment of pre-menopausal and post-menopausal women with HR+/HER2– ABC as first-line standard therapy [1–3].

To date, PALOMA-2 offers the longest follow-up of any phase 3 study evaluating a CDK4/6 inhibitor in patients with ABC and no prior systemic treatment for their advanced disease. After 37.6 months of follow-up, palbociclib-letrozole consistently improved median PFS compared with placebo-letrozole in the overall population and across all subgroups of patients with ER+/HER2– ABC. Of note, patients with a low disease burden or a demonstrated sensitivity to endocrine monotherapy derived substantial PFS benefit from the addition of palbociclib to letrozole (> 3 years median PFS); these findings were confirmed by a STEPP analysis of TFI. The PFS benefit for patients with a low disease burden receiving palbociclib-letrozole should also be viewed in the context of results from another analysis of the PALOMA-2 population which concluded that patients without progression versus those who progressed showed a significantly greater delay in deterioration of HRQOL [16].

The role of abemaciclib plus letrozole or anastrozole as initial treatment for HR+/HER2– ABC is being investigated in the MONARCH 3 trial [15]. In contrast to the PALOMA-2 study in which all subgroups of patients benefited from the addition of palbociclib to letrozole, an exploratory subgroup analysis from MONARCH 3 suggested that patients with a better prognosis at baseline (i.e., > 36 months TFI or bone-only disease) derived no further benefit from the addition of abemaciclib to endocrine therapy. However, comparisons across studies can be confounding when the duration of follow-up is too short for accrual of events in patients with endocrine-sensitive disease or bone-only disease.

The updated PALOMA-2 results for the subgroup of patients with non-visceral disease who had not received previous endocrine therapy can also be viewed alongside the Fulvestrant and Anastrozole Compared in Hormonal Therapy Naive Advanced Breast Cancer (FALCON) trial results [17]. In a pre-specified subgroup of 208 women who had not received prior endocrine therapy and who did not have visceral disease, the median PFS was 22.3 versus 13.8 months with fulvestrant versus anastrozole, respectively, HR 0.59 (95% CI 0.42–0.84) [17]. Although cross-study comparisons are inexact, in PALOMA-2, the median PFS was

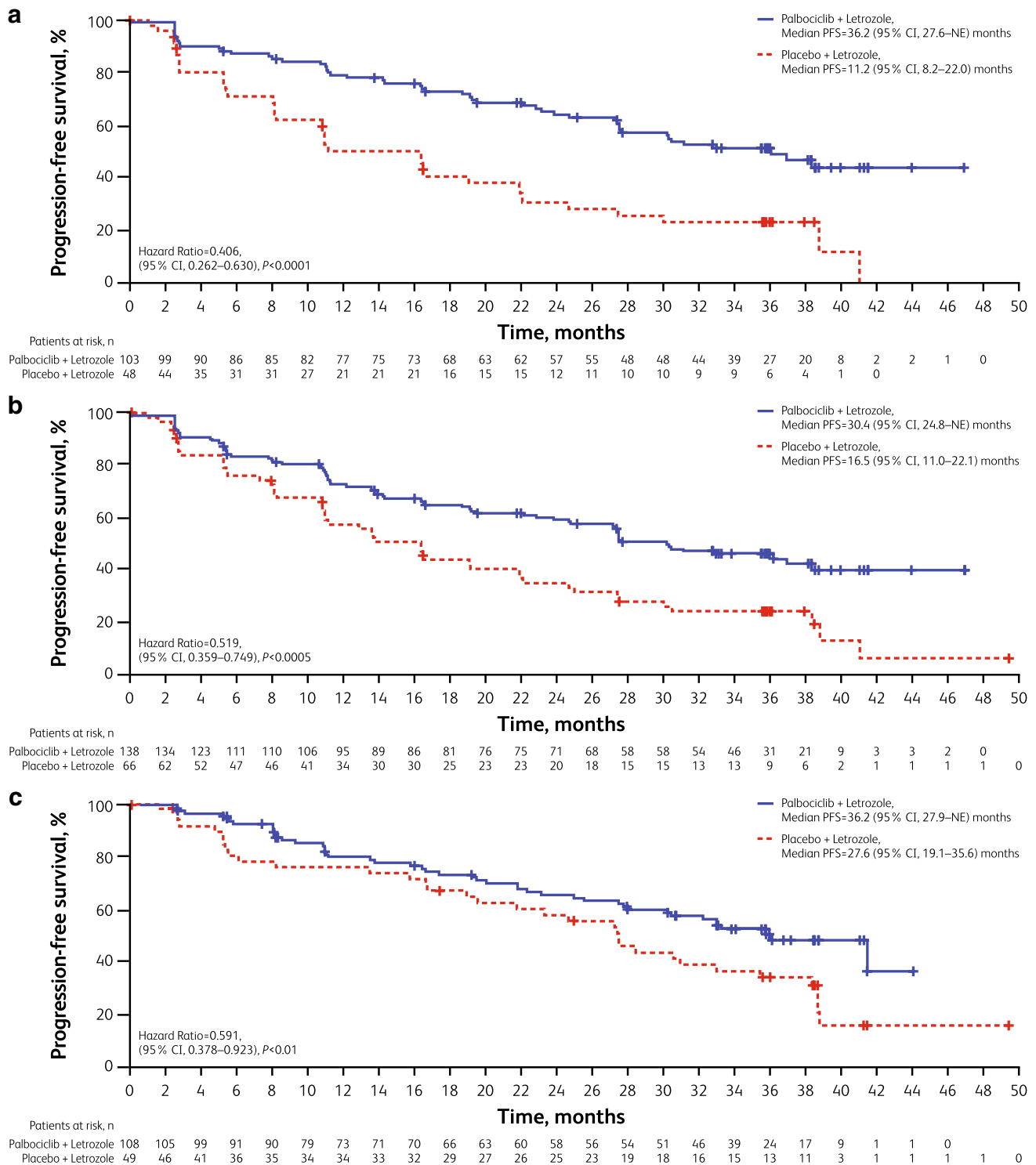


Fig. 2 Investigator-assessed PFS in subgroups of patients (ITT population). Kaplan–Meier curves for **a** bone-only and **b** single disease site—both representing low disease burden—and **c** no prior endo-

crine therapy with non-visceral disease. *HR* hazard ratio, *ITT* intent-to-treat, *NE* not estimable, *PFS* progression-free survival

36.2 months (Fig. S3c) for women with non-visceral disease and no prior endocrine therapy who received palbociclib and letrozole, as compared to the 22.3 months PFS seen

with fulvestrant in patients with non-visceral disease in the FALCON study. Among the patients who had not received prior endocrine therapy or had non-visceral disease in the

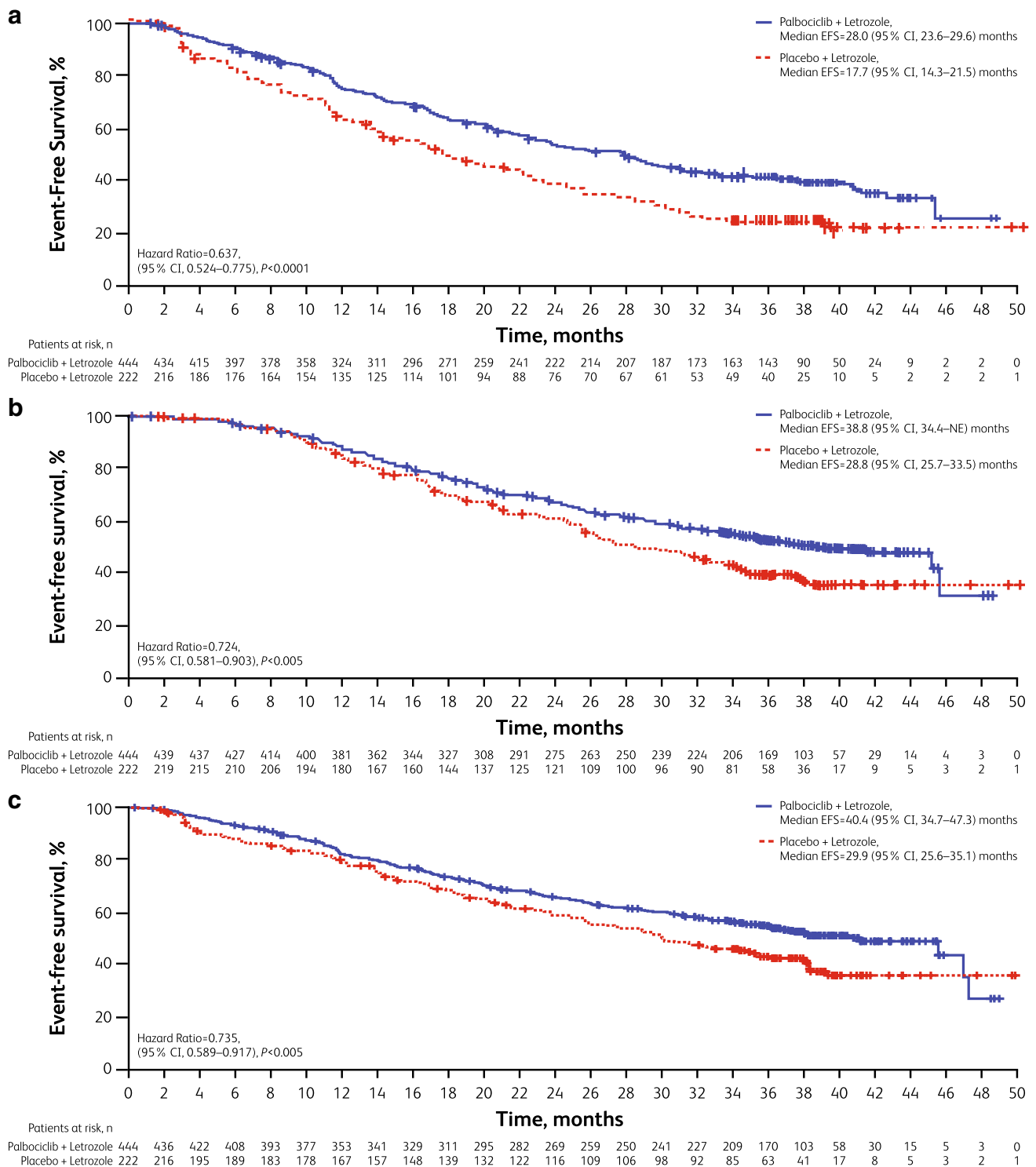


Fig. 3 Kaplan–Meier estimates of time to initiation of subsequent systemic anticancer therapies (anticancer treatment included any anticancer related systemic therapy and surgery for the disease under study) (ITT population) **a** Time from randomization to first subsequent therapy. **b** Time from randomization to second subsequent therapy (if the difference in time to initiation of the second subsequent therapy between the 2 treatment arms was shortened compared with

the difference between the median PFS values, it may suggest that the treatment benefit of the first subsequent therapy was compromised. If the difference was similar, it suggests no compromise regarding the efficacy of the first subsequent therapy). **c** Time from randomization to first subsequent chemotherapy. *EFS* event-free survival, *ITT* intent-to-treat

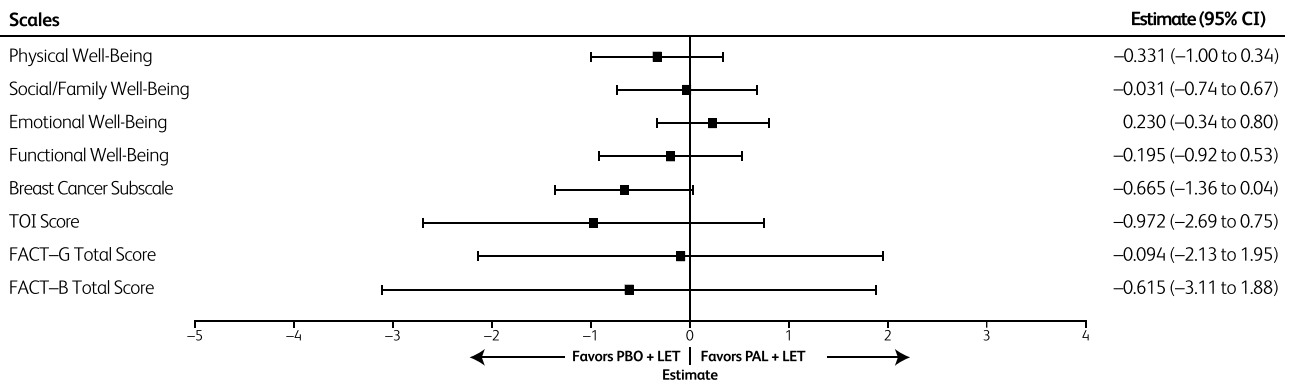
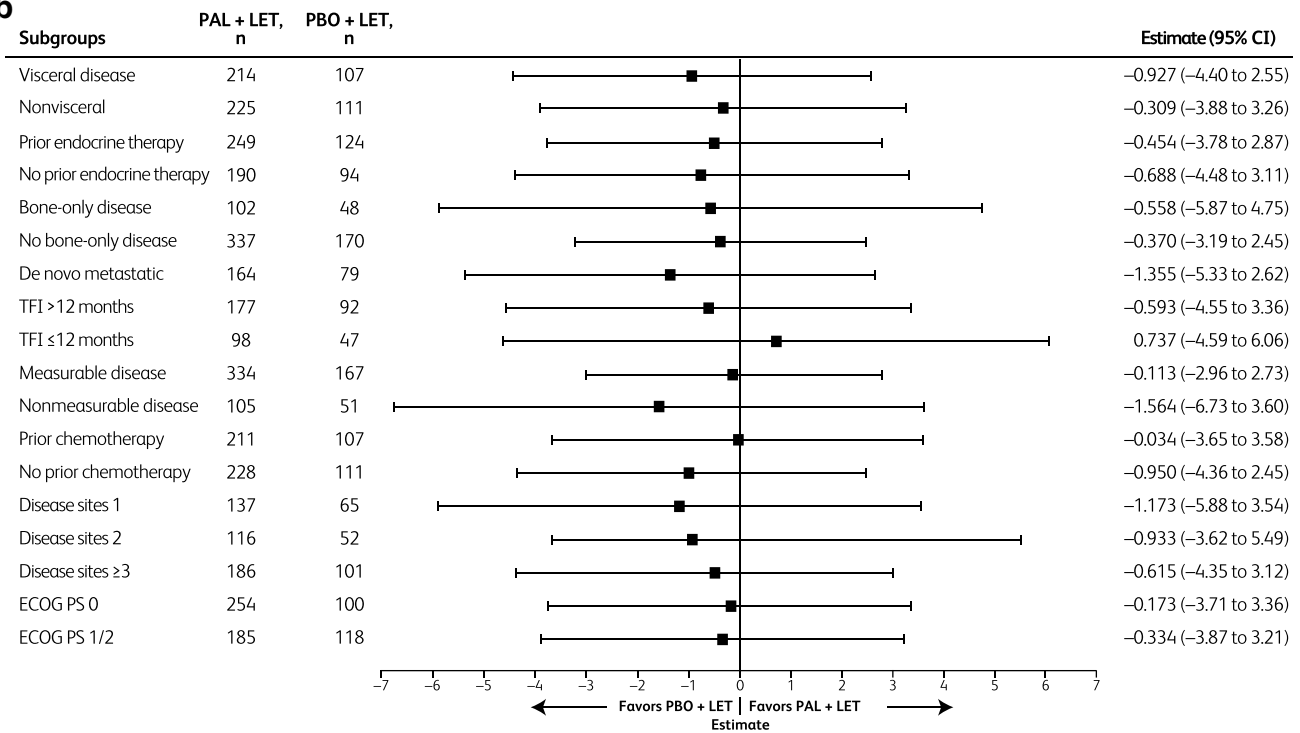
a**b**

Fig. 4 Between-treatment comparison of changes from baseline for FACT-B scores (PRO analysis set included patients in the PRO-evaluable population [i.e., patients with a baseline and ≥ 1 postbaseline assessment before the end of the study treatment]) **a** FACT-B scales of overall scores. **b** FACT-B total score by subgroups. *BC* breast cancer,

ECOG PS Eastern Cooperative Oncology Group performance status, *FACT-B* Functional Assessment of Cancer Therapy-Breast, *FACT-G* Functional Assessment of Cancer Therapy-General, *LET* letrozole, *PAL* palbociclib, *PBO* placebo, *PRO* patient-reported outcome, *TFI* treatment-free interval, *TOI* Trial Outcome Index

PALOMA-2 study, those who received palbociclib-letrozole for > 3 years maintained a quality of life not significantly different from patients receiving placebo-letrozole therapy (Fig. 4); furthermore, this quality of life is similar to that of a normal healthy population.

The results for median time to initiation of the first and second subsequent systemic therapy in this study suggest that the treatment benefit of the first subsequent therapy was not compromised by palbociclib. Additional clinical studies are needed to confirm these findings.

Similarly, palbociclib plus letrozole therapy delayed the initiation of first subsequent chemotherapy. More than one-third of patients in this study received chemotherapy as their first subsequent line of therapy after disease progression on the study drug, which could suggest theirs was a higher-risk disease. The longer the initiation of salvage chemotherapy can be postponed, the longer patients can be spared from increased toxicities associated with these drugs, which may have a more negative effect on quality of life than less toxic agents [18] and, more importantly, have limited efficacy after

endocrine therapy failure. Thus, the observed prolonged time to initiation of first subsequent chemotherapy following palbociclib is of clinical relevance to patients with ER+/HER2– ABC because it postponed the onset of endocrine resistance and may offer a therapeutic advantage in a setting with unmet medical needs [18].

Of the patients who progressed on palbociclib–letrozole in the first-line setting, 70 (30.8%) and 49 (21.6%) in the next immediate line of therapy switched to fulvestrant and exemestane therapy, respectively. These data suggest that challenging patients with single-agent endocrine therapy is feasible following progression on CDK inhibitor therapy.

None of the phase 3 studies of CDK4/6 inhibitors as first-line treatment have reported overall survival. Due to the chronic and prolonged indolent nature of HR+ MBC, PALOMA-2 has not yet reached the prerequisite number of events to trigger overall survival analysis. In the absence of overall survival data, the median PFS durations for subgroups of patients in the first and immediate subsequent line of therapy post-progression are of interest. Our analysis showed that the time to subsequent line was prolonged by the addition of palbociclib over endocrine therapy alone and treatment effect was maintained, which provides early evidence for the long-term impact on patient outcomes.

Conclusions

In this study, after approximately 15 additional months of follow-up, palbociclib–letrozole consistently improved PFS across all clinically relevant subgroups and substantially delayed the next line of therapy without decreasing its duration of use. Furthermore, the safety profile of the combination remained consistent with previous observations [4]. The PROs confirm that quality of life was maintained in the overall population and across subgroups. Collectively, these data reinforce that palbociclib–letrozole should be regarded as an important first-line therapy option for patients with HR+/HER2– ABC.

Acknowledgements This study was sponsored by Pfizer Inc. Editorial/medical writing support was provided by Jennifer Fetting, PhD, of Complete Healthcare Communications, LLC (North Wales, PA), a CHC Group company, and was funded by Pfizer.

Author contributions RG, NH, RSF, DJS, and JE were involved in the design of the study, ERG, NH, JE, RSF and DJS participated in the acquisition, analysis, and interpretation of data. ERG, RSF, and DJS were involved in patient enrollment. DRL was specifically involved in the statistical analysis of data. All authors, HSR, RSF, VD, JE, OL, AAJ, NH, AC, SI, DRL, AM, ERG, CHB, KAG, and DJS, were involved in drafting the manuscript, revising it critically for important intellectual content, approving the final version to be published, and agreed to be accountable for all aspects of the work.

Funding This work was supported by Pfizer Inc. No Grant Number is applicable.

Data Availability Upon request, and subject to certain criteria, conditions and exceptions (see <https://www.pfizer.com/science/clinical-trials/trial-data-and-results> for more information), Pfizer will provide access to individual de-identified participant data from Pfizer-sponsored global interventional clinical studies conducted for medicines, vaccines and medical devices (1) for indications that have been approved in the US and/or EU or (2) in programs that have been terminated (i.e., development for all indications has been discontinued). Pfizer will also consider requests for the protocol, data dictionary, and statistical analysis plan. Data may be requested from Pfizer trials 24 months after study completion. The de-identified participant data will be made available to researchers whose proposals meet the research criteria and other conditions, and for which an exception does not apply, via a secure portal. To gain access, data requestors must enter into a data access agreement with Pfizer.

Compliance with ethical standards

Conflict of interest HSR's institution received research funding from Plexikon, MacroGenics, OBI Pharma, Eisai, Pfizer, Novartis, Eli Lilly, Roche, and Merck. RSF received consulting fees from Pfizer, Bayer, Novartis, Bristol-Myers Squibb, Merck, Eli Lilly, Eisai, and Roche/Genentech as well as other research funding from Pfizer. VD received consulting fees from Genentech, Eli Lilly, Pfizer, Astellas, AbbVie, Novartis Pharma KK, Daichy, Tesaro, NSD, Seattle Genetics, and Roche-Peru, as well as speakers bureau fees from Pfizer, Novartis Pharma KK, and Roche-Peru. JE received consulting fees from Eli Lilly, Novartis, Pfizer, Roche, and Eisai, performed contracted research for Celgene, and received honoraria from Eli Lilly, Novartis, Pfizer, Roche, TEVA, and Pierre Fabre. AAJ received consulting fees from Amgen, AbbVie, AstraZeneca, BMS, Eli Lilly, Pfizer, Novartis, and Roche. NH received consulting fees for Eli Lilly, Novartis, and Pfizer. AC received consulting/advisory fees from Agendia. KAG received consulting/advisory fees from Pfizer, Novartis, AstraZeneca, NanoString Technologies, Merck, Eli Lilly, Genomic Health, Roche, Seattle Genetics, and Mylan. DJS received consulting fees from Pfizer, Eli Lilly, and Novartis, performed contracted research for Pfizer and Novartis, is a Pfizer stockholder, received travel accommodation/expenses from Pfizer and BioMarin, and has a leadership role with BioMarin. CHB, ERG, SI, DRL, and AM are employees of and own stock in Pfizer. OL has nothing to disclose.

Ethical approval This trial complies with the current laws of the countries in which it was performed.

Open Access This article is distributed under the terms of the Creative Commons Attribution 4.0 International License (<http://creativecommons.org/licenses/by/4.0/>), which permits unrestricted use, distribution, and reproduction in any medium, provided you give appropriate credit to the original author(s) and the source, provide a link to the Creative Commons license, and indicate if changes were made.

References

- Cardoso F, Costa A, Senkus E, Aapro M, Andre F, Barrios CH, Bergh J, Bhattacharyya G, Biganzoli L, Cardoso MJ, Carey L, Corneliussen-James D, Curigliano G, Dieras V, El Saghir N, Eniu A, Fallowfield L, Fenech D, Francis P, Gelmon K, Gennari

- A, Harbeck N, Hudis C, Kaufman B, Krop I, Mayer M, Meijer H, Mertz S, Ohno S, Pagani O, Papadopoulos E, Peccatori F, Pernaut-Llorca F, Piccart MJ, Pierga JY, Rugo H, Shockney L, Sledge G, Swain S, Thomssen C, Tutt A, Vorobiof D, Xu B, Norton L, Winer E (2017) 3rd ESO-ESMO International Consensus Guidelines for Advanced Breast Cancer (ABC 3). *Breast* 31:244–259. <https://doi.org/10.1016/j.breast.2016.10.00>
2. Rugo H, Rumble B, Macrae E, Barton DL, Connolly HK, Dickler MN, Fallowfield LA, Fowble B, Ingle JN, Jahanzeb M, Johnston SR, Korde LA, Khatcheressian J, M RS, Muss HB, Burstein HJ (2016) Endocrine therapy for hormone receptor-positive metastatic breast cancer: American Society of Clinical Oncology guideline. *J Clin Oncol* 34:3069–3103. <https://doi.org/10.1200/JCO.2016.67.1487>
 3. National Comprehensive Cancer Network (2017) NCCN Clinical Practice Guidelines in Oncology (NCCN Guidelines®). Breast cancer. Version 4.2017 https://www.nccn.org/professionals/physician_gls/pdf/breast.pdf. Accessed Feb 12 2018
 4. Finn RS, Martin M, Rugo HS, Jones S, Im SA, Gelmon K, Harbeck N, Lipatov ON, Walshe JM, Moulder S, Gauthier E, Lu DR, Randolph S, Dieras V, Slamon DJ (2016) Palbociclib and letrozole in advanced breast cancer. *N Engl J Med* 375:1925–1936. <https://doi.org/10.1056/NEJMoa1607303>
 5. IBRANCE® (palbociclib) (2018) Full prescribing information. Pfizer Inc, New York
 6. Brady MJ, Cella DF, Mo F, Bonomi AE, Tulsy DS, Lloyd SR, Deasy S, Cobleigh M, Shiimoto G (1997) Reliability and validity of the Functional Assessment of Cancer Therapy-Breast quality-of-life instrument. *J Clin Oncol* 15:974–986. <https://doi.org/10.1200/JCO.1997.15.3.974>
 7. EuroQoL Group (1990) EuroQoL—a new facility for the measurement of health-related quality of life. *Health Policy* 16:199–208. [https://doi.org/10.1016/0168-8510\(90\)90421-9](https://doi.org/10.1016/0168-8510(90)90421-9)
 8. Zhou X, Cella D, Cameron D, Amonkar MM, Segreti A, Stein S, Walker M, Geyer CE (2009) Lapatinib plus capecitabine versus capecitabine alone for HER2+ (ErbB2+) metastatic breast cancer: quality-of-life assessment. *Breast Cancer Res Treat* 117:577–589. <https://doi.org/10.1007/s10549-009-0310-8>
 9. Bonetti M, Zahrieh D, Cole BF, Gelber RD (2009) A small sample study of the STEPP approach to assessing treatment-covariate interactions in survival data. *Stat Med* 28:1255–1268. <https://doi.org/10.1002/sim.3524>
 10. Finn RS, Crown JP, Lang I, Boer K, Bondarenko IM, Kulyk SO, Ettl J, Patel R, Pinter T, Schmidt M, Shparyk Y, Thummala AR, Voytko NL, Fowst C, Huang X, Kim ST, Randolph S, Slamon DJ (2015) The cyclin-dependent kinase 4/6 inhibitor palbociclib in combination with letrozole versus letrozole alone as first-line treatment of oestrogen receptor-positive, HER2-negative, advanced breast cancer (PALOMA-1/TRIO-18): a randomised phase 2 study. *Lancet Oncol* 16:25–35. [https://doi.org/10.1016/s1470-2045\(14\)71159-3](https://doi.org/10.1016/s1470-2045(14)71159-3)
 11. Turner NC, Ro J, Andre F, Loi S, Verma S, Iwata H, Harbeck N, Loibl S, Huang Bartlett C, Zhang K, Giorgetti C, Randolph S, Koehler M, Cristofanilli M, Group PS (2015) Palbociclib in hormone-receptor-positive advanced breast cancer. *N Engl J Med* 373:209–219. <https://doi.org/10.1056/NEJMoa1505270>
 12. Hortobagyi GN, Stemmer SM, Burris HA, Yap YS, Sonke GS, Paluch-Shimon S, Campone M, Blackwell KL, Andre F, Winer EP, Janni W, Verma S, Conte P, Arteaga CL, Cameron DA, Petrakova K, Hart LL, Villanueva C, Chan A, Jakobsen E, Nusch A, Burdaeva O, Grischke EM, Alba E, Wist E, Marschner N, Favret AM, Yardley D, Bachelot T, Tseng LM, Blau S, Xuan F, Souami F, Miller M, Germa C, Hirawat S, O’Shaughnessy J (2016) Ribociclib as first-line therapy for HR-positive, advanced breast cancer. *N Engl J Med* 375:1738–1748. <https://doi.org/10.1056/NEJMoa1609709>
 13. Ribociclib extends survival in HR + breast cancer (2018) *Cancer Discov* 8:OF5
 14. Sledge GW Jr, Toi M, Neven P, Sohn J, Inoue K, Pivov X, Burdaeva O, Okera M, Masuda N, Kaufman PA, Koh H, Grischke EM, Frenzel M, Lin Y, Barriga S, Smith IC, Bourayou N, Llombart-Cussac A (2017) MONARCH 2: abemaciclib in combination with fulvestrant in women with HR+/HER2– advanced breast cancer who had progressed while receiving endocrine therapy. *J Clin Oncol* 35:2875–2884. <https://doi.org/10.1200/jco.2017.73.7585>
 15. Goetz MP, Toi M, Campone M, Sohn J, Paluch-Shimon S, Huober J, Park IH, Tredan O, Chen SC, Manso L, Freedman OC, Garnica Jaliffe G, Forrester T, Frenzel M, Barriga S, Smith IC, Bourayou N, Di Leo A (2017) MONARCH 3: abemaciclib as initial therapy for advanced breast cancer. *J Clin Oncol* 35:3638–3646. <https://doi.org/10.1200/JCO.2017.75.6155>
 16. Rugo HS, Dieras V, Gelmon KA, Finn RS, Slamon DJ, Martin M, Neven P, Shparyk Y, Mori A, Lu DR, Bhattacharyya H, Bartlett CH, Iyer S, Johnston S, Ettl J, Harbeck N (2018) Impact of palbociclib plus letrozole on patient-reported health-related quality of life: results from the PALOMA-2 trial. *Ann Oncol* 29:888–894. <https://doi.org/10.1093/annonc/mdy012>
 17. Robertson JFR, Bondarenko IM, Trishkina E, Dvorkin M, Panasci L, Manikhas A, Shparyk Y, Cardona-Huerta S, Cheung K-L, Philco-Salas MJ, Ruiz-Borrego M, Shao Z, Noguchi S, Rowbottom J, Stuart M, Grinsted LM, Fazal M, Ellis MJ (2016) Fulvestrant 500 mg versus anastrozole 1 mg for hormone receptor-positive advanced breast cancer (FALCON): an International, Randomised, Double-blind, Phase 3 Trial. *Lancet* 388:2997–3005. [https://doi.org/10.1016/s0140-6736\(16\)32389-3](https://doi.org/10.1016/s0140-6736(16)32389-3)
 18. Partridge AH, Rumble RB, Carey LA, Come SE, Davidson NE, Di Leo A, Gralow J, Hortobagyi GN, Moy B, Yee D, Brundage SB, Danso MA, Wilcox M, Smith IE (2014) Chemotherapy and targeted therapy for women with human epidermal growth factor receptor 2-negative (or unknown) advanced breast cancer: American Society of Clinical Oncology Clinical Practice Guideline. *J Clin Oncol* 32:3307–3329. <https://doi.org/10.1200/jco.2014.56.7479>

Publisher’s Note Springer Nature remains neutral with regard to jurisdictional claims in published maps and institutional affiliations.

Affiliations

H. S. Rugo¹ · R. S. Finn² · V. Diéras^{3,4} · J. Ettl⁵ · O. Lipatov⁶ · A. A. Joy⁷ · N. Harbeck⁸ · A. Castellon⁹ · S. Iyer¹⁰ · D. R. Lu¹¹ · A. Mori¹² · E. R. Gauthier¹³ · C. Huang Bartlett¹⁴ · K. A. Gelmon¹⁵ · D. J. Slamon²

¹ Department of Medicine (Hematology/Oncology), University of California San Francisco, Helen Diller Family Comprehensive Cancer Center, 1600 Divisadero St, 2nd Floor, San Francisco, CA 94115, USA

² Division of Hematology/Oncology, David Geffen School of Medicine at UCLA, Santa Monica, CA, USA

- ³ Department of Medical Oncology, Institut Curie, Paris, France
- ⁴ Centre Eugène Marquis, Rennes, France
- ⁵ Frauenklinik und Poliklinik Klinikum rechts der Isar, Technische Universität München, Munich, Germany
- ⁶ Republican Clinical Oncology Dispensary, State Budget Medical Institution, Ufa, Russia
- ⁷ Department of Oncology, Cross Cancer Institute, University of Alberta, Edmonton, AB, Canada
- ⁸ Department of Obstetrics and Gynecology, Brustzentrum der Universität München (LMU), Munich, Germany
- ⁹ Breast Cancer Center, Memorial Cancer Institute, Hollywood, FL, USA
- ¹⁰ Patient and Health Impact, Pfizer Inc, New York, NY, USA
- ¹¹ Clinical Statistics, Pfizer Inc, La Jolla, CA, USA
- ¹² Global Product Development, Clinical, Pfizer S.r.l, Milan, Italy
- ¹³ Global Product Development, Clinical, Pfizer Inc, San Francisco, CA, USA
- ¹⁴ Global Product Development, Clinical, Pfizer Inc, Collegeville, PA, USA
- ¹⁵ Department of Medical Oncology, British Columbia Cancer Agency, Vancouver, BC, Canada