

Fig. S1 Overweight & obesity is one of the risk factors for chronic diseases. It depicts the lifestyles and risk factors associated with chronic diseases, as well as the chronic diseases related to overweight and obesity.

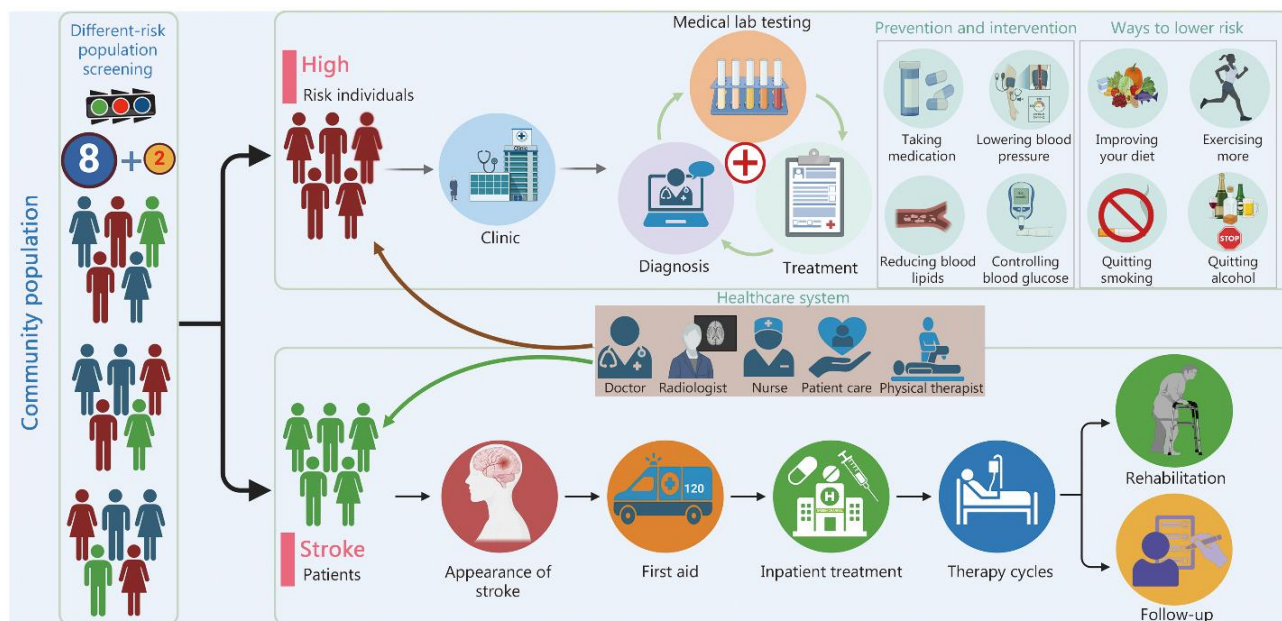


Fig. S2 Stroke clinic with whole-course management. It illustrates the stratified management principles for different risk levels after cerebrovascular disease screening in community populations: high-risk individuals are included in comprehensive stroke outpatient management; stroke patients are enrolled in an integrated stroke management model.