

The accumulation rate of tau aggregates is higher in females and younger amyloid-positive subjects

Ruben Smith,^{1,2} Olof Strandberg,¹ Niklas Mattsson-Carlsson,^{1,2,3} Antoine Leuzy,¹ Sebastian Palmqvist,^{1,4} Michael J. Pontecorvo,⁵ Michael D. Devous Sr,⁵ Rik Ossenkoppele^{1,6} and Oskar Hansson^{1,4}

The development of tau-PET allows paired helical filament tau pathology to be visualized *in vivo*. Increased knowledge about conditions affecting the rate of tau accumulation could guide the development of therapies halting the progression of Alzheimer's disease. However, the factors modifying the rate of tau accumulation over time in Alzheimer's disease are still largely unknown. Large-scale longitudinal cohort studies, adjusting for baseline tau load, are needed to establish such risk factors. In the present longitudinal study, 419 participants from four cohorts in the USA (Avid 05e, $n = 157$; Expedition-3, $n = 82$; ADNI, $n = 123$) and Sweden (BioFINDER, $n = 57$) were scanned repeatedly with tau-PET. The study participants were cognitively unimpaired ($n = 153$), or patients with mild cognitive impairment ($n = 139$) or Alzheimer's disease dementia ($n = 127$). Participants underwent two to four tau-PET (¹⁸F-flortaucipir) scans with a mean (\pm standard deviation) of 537 (± 163) days between the first and last scan. The change in tau-PET signal was estimated in temporal meta- and neocortical regions of interest. Subject specific tau-PET slopes were predicted simultaneously by age, sex, amyloid status (determined by amyloid- β PET), APOE $\epsilon 4$ genotype, study cohort, diagnosis and baseline tau load. We found that accelerated increase in tau-PET signal was observed in amyloid- β -positive mild cognitive impairment ($3.0 \pm 5.3\%$) and Alzheimer's disease dementia ($2.9 \pm 5.7\%$), respectively, when compared to either amyloid- β -negative cognitively unimpaired ($0.4 \pm 2.7\%$), amyloid- β -negative mild cognitive impairment ($-0.4 \pm 2.3\%$) or amyloid- β -positive cognitively unimpaired ($1.2 \pm 2.8\%$). Tau-PET uptake was accelerated in females (temporal region of interest: $t = 2.86$, $P = 0.005$; neocortical region of interest: $t = 2.90$, $P = 0.004$), younger individuals (temporal region of interest: $t = -2.49$, $P = 0.013$), and individuals with higher baseline tau-PET signal (temporal region of interest: $t = 3.83$, $P < 0.001$; neocortical region of interest: $t = 5.01$, $P < 0.001$). Tau-PET slopes decreased with age in amyloid- β -positive subjects, but were stable by age in amyloid- β -negative subjects (age \times amyloid- β status interaction: $t = -2.39$, $P = 0.018$). There were no effects of study cohort or APOE $\epsilon 4$ positivity. In a similar analysis on longitudinal amyloid- β -PET (in ADNI subjects only, $n = 639$), we found significant associations between the rate of amyloid- β accumulation and APOE $\epsilon 4$ positivity, older age and baseline amyloid- β positivity, but no effect of sex. In conclusion, in this longitudinal PET study comprising four cohorts, we found that the tau accumulation rate is greater in females and younger amyloid- β -positive individuals, while amyloid- β accumulation is greater in APOE $\epsilon 4$ carriers and older individuals. These findings are important considerations for the design of clinical trials, and might improve our understanding of factors associated with faster tau aggregation and spread.

- 1 Clinical Memory Research Unit, Department of Clinical Sciences, Lund University, Malmö, Sweden
- 2 Department of Neurology, Skåne University Hospital, Lund, Sweden
- 3 Wallenberg Centre for Molecular Medicine, Lund University, Lund, Sweden
- 4 Memory Clinic, Skåne University Hospital, Lund, Sweden

Received February 20, 2020. Revised May 21, 2020. Accepted August 06, 2020. Advance access publication December 1, 2020

© The Author(s) (2020). Published by Oxford University Press on behalf of the Guarantors of Brain.

This is an Open Access article distributed under the terms of the Creative Commons Attribution Non-Commercial License (<http://creativecommons.org/licenses/by-nc/4.0/>), which permits non-commercial re-use, distribution, and reproduction in any medium, provided the original work is properly cited. For commercial re-use, please contact journals.permissions@oup.com

5 Avid Radiopharmaceuticals, Philadelphia, PA, USA

6 Amsterdam University Medical Center, Alzheimercenter, Neuroscience Campus Amsterdam, Amsterdam, The Netherlands

Correspondence to: Ruben Smith

Department of Neurology, Skåne University Hospital, SE-20502 Malmö, Sweden

E-mail: Ruben.Smith@med.lu.se

Correspondence may also be addressed to: Oskar Hansson

Memory Clinic, Skåne University Hospital, SE-20502 Malmö, Sweden

E-mail: Oskar.Hansson@med.lu.se

Keywords: tau; PET; sex differences; Alzheimer's disease; disease progression

Abbreviations: MCI =mild cognitive impairment; SUVR =standardized uptake value ratio

Introduction

Neuropathological hallmarks of Alzheimer's disease are deposition of amyloid- β and tau aggregates in the brain, with tau pathology presumably starting to accumulate in the medial temporal lobe and spreading from there throughout the neocortex (Grundke-Iqbal *et al.*, 1986; Braak and Braak, 1991). In recent years, several PET tracers detecting tau have been developed (Chien *et al.*, 2013; Okamura *et al.*, 2014; Harada *et al.*, 2016; Declercq *et al.*, 2017; Wong *et al.*, 2018; Betthausen *et al.*, 2019; Leuzy *et al.*, 2019). The most well established tau-PET tracer is ^{18}F -flortaucipir, which detects the tau pathology of Alzheimer's disease *in vivo* (Chien *et al.*, 2013; Cho *et al.*, 2016; Ossenkoppele *et al.*, 2016; Smith *et al.*, 2016, 2019), correlates with tau deposits detected at neuropathology (Smith *et al.*, 2019) and distinguishes Alzheimer's disease from other neurodegenerative disorders with high specificity and sensitivity (Ossenkoppele *et al.*, 2018).

The prevalence and life-time risk of Alzheimer's disease is higher in females than in males (Andersen *et al.*, 1999; Mielke *et al.*, 2014; Chene *et al.*, 2015). Female sex has also been related to more neuritic amyloid- β plaques and a more widespread tau pathology as indicated by higher Consortium to Establish a Registry for Alzheimer's Disease (CERAD) scores and Braak stages at death (Filon *et al.*, 2016; Hohman *et al.*, 2018). Females showed higher tau-PET retention in the medial temporal lobes in cognitively unimpaired participants compared to males (Buckley *et al.*, 2019), but only in participants with high amyloid. Further, a sex \times APOE $\epsilon 4$ interaction on tau in the entorhinal cortex has been described in patients with mild cognitive impairment (MCI) due to Alzheimer's disease (Liu *et al.*, 2019). But apart from these studies the literature on systematic sex differences related to tau pathology using PET is limited. Several cross-sectional studies have shown an increased tau-PET retention in neocortical areas in younger patients with Alzheimer's disease compared to Alzheimer's disease patients with a late-onset disease (Ossenkoppele *et al.*, 2016; Day *et al.*, 2017; Koychev *et al.*, 2017; Pontecorvo *et al.*, 2017b; Scholl *et al.*, 2017). Considering that female sex and lower age has been suggested to be associated with a higher brain

resilience against tau pathology (Digma *et al.*, 2020; Ossenkoppele *et al.*, 2020), females and younger cases could be more likely to be included in less advanced diagnostic groups (e.g. in cohorts with cognitively unimpaired cases) despite higher tau load compared to males and older participants. As a result of these differences, longitudinal studies in the same individuals are needed to study whether certain factors, such as age and sex, are associated with a faster development of tau pathology over time. Longitudinal studies also allow for the baseline tau burden, which may be associated with the accumulation rate of tau pathology (Pontecorvo *et al.*, 2019), to be included in the prediction models.

The majority of ^{18}F -flortaucipir studies in Alzheimer's disease have been with a cross-sectional design but there are now several reports describing the longitudinal accumulation of tau in Alzheimer's disease (Jack *et al.*, 2018; Southekal *et al.*, 2018; Cho *et al.*, 2019; Hanseeuw *et al.*, 2019; Harrison *et al.*, 2019; Pontecorvo *et al.*, 2019), indicating larger yearly increases in tau standardized uptake value ratios (SUVRs) in cognitively impaired compared to cognitively unimpaired subjects. Despite several now published longitudinal studies, factors associated with increased or decreased rates of tau accumulation remain largely unknown. In this exploratory study, we included 419 participants from four cohort studies in North America and Europe to assess whether age, sex, APOE $\epsilon 4$ status, amyloid- β status, diagnosis and baseline tau load were associated to a slower or a more rapid rate of tau accumulation.

Materials and methods

Participants

A convenience sample consisting of amyloid- β -negative cognitively unimpaired individuals ($n = 88$) as well as amyloid- β -negative patients with MCI ($n = 58$) and participants spanning the Alzheimer's disease spectrum [amyloid- β -positive; cognitively unimpaired ($n = 65$), MCI ($n = 81$) and Alzheimer's disease dementia ($n = 127$)] was included from the Avid Radiopharmaceuticals Study A05e (NCT 02016560; $n = 157$), the placebo arm of the Expedition-3 study ($n = 82$), the Swedish

BioFINDER study (<http://biofinder.se>) at Lund University ($n = 57$), and the publicly available Alzheimer Disease Neuroimaging Initiative (ADNI; <http://adni.loni.usc.edu>, $n = 123$). Longitudinal data from Avid Radiopharmaceuticals Study A05e has been published previously (Pontecorvo *et al.*, 2019). Clinical characteristics of the participants are provided in Table 1. Participant characteristics within each sub-cohort and between cohort comparisons are shown in supplementary Tables 1 and 2. The distribution of APOE $\epsilon 4$ genotypes in males and females is provided in Supplementary Table 3 and demographics for young onset participants in Supplementary Table 4. The participants underwent two to four (median three) ^{18}F -florbetapir PET scans between November 2014 and May 2019. The mean interval [\pm standard deviation (SD)] from first to last scan was 537 (± 163) days (range: 209–1222 days). All underwent a medical history and neurological examination, brain MRI, and neuropsychological testing. Participants were evaluated against the 2012 NIA-AA criteria for preclinical Alzheimer's disease (Jack *et al.*, 2012), Albert criteria for MCI (Albert *et al.*, 2011) or McKhann criteria for Alzheimer's disease (McKhann *et al.*, 2011). We included only amyloid- β -positive patients in the Alzheimer's disease dementia group to minimize the number of patients clinically misdiagnosed with Alzheimer's disease dementia. Amyloid- β status was determined using ^{18}F -florbetapir (ADNI, Avid 05e and Expedition-3 studies; a cortical composite cut-off of <1.11 using a whole cerebellar reference region was used in ADNI and <1.1 in Avid 05e and Expedition-3) (Pontecorvo *et al.*, 2017a) or ^{18}F -flutemetamol (BioFINDER; using a cortical composite cut-off of <0.743 with a white matter/brainstem/cerebellar reference region) PET, as previously described (Thurfjell *et al.*, 2014; Palmqvist *et al.*, 2017). Cognitively unimpaired control subjects had no significant neurological or psychiatric illnesses and were a mix of research volunteers recruited through advertisements and persons visiting the memory clinic with subjective cognitive decline (24 of 153 cognitively unimpaired) but normal performance at neuropsychological testing (Jessen *et al.*, 2014).

For assessing factors influencing longitudinal amyloid- β accumulation, a separate dataset was downloaded from ADNI comprising 639 participants (accessed 20 August 2018), having undergone at least two ^{18}F -florbetapir PET scans from 9 June 2010 through 12 July 2018 (cohort characteristics are summarized in Supplementary Table 5). The mean interscan interval was 803 days (range: 475–2409 days). Written informed consent was obtained from all participants and local institutional review boards for human research approved the studies at each site.

PET and MRI

Images in Avid 05e, Expedition-3 and BioFINDER were acquired as previously described (Hahn *et al.*, 2017; Honig *et al.*, 2018; Pontecorvo *et al.*, 2019). ADNI image acquisition description can be found at: <http://adni.loni.usc.edu/methods/pet-analysis-method/pet-analysis/>. In brief, ^{18}F -florbetapir PET data were locally attenuation corrected and reconstructed according to scanner specific protocols into 4×5 -min frames for the 80–100 min interval or 6×5 -min frames in the 75–105 min (ADNI protocol) interval after injection of ~ 370 MBq ^{18}F -florbetapir (Hahn *et al.*, 2017; Pontecorvo *et al.*, 2019). Since the ADNI images were acquired on different scanners, these images were motion corrected, averaged, with a standard image and voxel-size and smoothed with an 8 mm smoothing filter to

harmonize the resolution between scans in the study. The PET images were subsequently centrally processed at Lund University using an in-house developed semi-automated pipeline (Mattsson *et al.*, 2017; Ossenkoppele *et al.*, 2018). Processing was performed by personnel who were blinded to clinical information. In brief, PET images were resampled to the same image size ($128 \times 128 \times 63$ matrix) and voxel dimensions ($2.0 \times 2.0 \times 2.0$ mm) across cohorts. The images were motion-corrected using Analysis of Functional NeuroImages (AFNI) 3dvolreg, time-averaged, and rigidly coregistered to the skull-stripped MRI scan. Using an inferior cerebellar grey matter reference region, voxelwise standardized uptake value ratio (SUVR) images were created. To increase region of interest stability between scans, FreeSurfer (version 6.0, <https://surfer.nmr.mgh.harvard.edu/>) parcellation/region of interest definition was performed on a midpoint MRI created by fusing the baseline and follow up MRI scans. The regions of interest were then warped back to the separate MRIs. Regions of interest were applied to the PET data transformed to participants' native T_1 space to extract mean regional SUVR values for each participant. For a supplementary analysis we performed partial volume effect (PVE) correction using the Geometric Transfer Matrix model (Rousset *et al.*, 1998), with point-spread-function set to be an isotropic Gaussian with full-width at half-maximum = 5 mm. PVE correction was performed in PET space (at $2 \times 2 \times 2$ mm resolution). After masking in PET space the volume was corrected using region-based voxel-wise correction (Thomas *et al.*, 2011) and then propagated to magnetic resonance space with a rigid PET-magnetic resonance transform where the final interpolation used was Lanczos windowed sinc and masking of region of interest averages were performed. The regions of interest used in this study were a medial temporal meta-region of interest (bilateral entorhinal, amygdala, fusiform, inferior and middle temporal and parahippocampal cortices), and an extra-temporal neocortical region of interest (bilateral caudal anterior cingulate, caudal middle frontal, cuneus, inferior parietal, isthmus cingulate, lateral occipital, lateral orbitofrontal, lingual, medial orbitofrontal, paracentral, pars opercularis, pars orbitalis, pars triangularis, pericalcarine, postcentral, posterior cingulate, precentral, precuneus, rostral anterior cingulate, rostral middle frontal, superior frontal, superior parietal, superior temporal, supramarginal, frontal pole, temporal pole, transverse temporal and insular cortices). For the longitudinal amyloid- β -PET a composite reference region consisting of cerebellar white matter/brainstem and eroded white matter was used (Landau *et al.*, 2015). No PVE correction was performed for the amyloid- β -PET data.

Statistics

Since the participants had undergone different number of ^{18}F -florbetapir PET scans (ranging from two to four) we performed linear regressions on the data, where the slopes of the regression lines reflect the annual change in SUVR. The slopes and other continuous variables [e.g. age, education, Mini-Mental State Examination (MMSE)] were compared between groups using ANOVA with Tukey's *post hoc* tests. APOE $\epsilon 4$ genotypes (0/1/2 APOE $\epsilon 4$ alleles) were compared using Kruskal-Wallis test with *post hoc* Mann-Whitney U-tests. Sex prevalence and dichotomous APOE $\epsilon 4$ (presence of at least one APOE $\epsilon 4$ allele) comparisons were performed using Chi-square tests. Linear models were used to study the factors affecting the rate of tau accumulation: tau

Table 1 Clinical characteristics of participants

	Aβ ⁻ CU	Aβ ⁻ MCI	Aβ ⁺ CU	Aβ ⁺ MCI	AD	Comparison P-value
<i>n</i>	88	58	65	81	127	
Age ± SD	71.1 ± 9.4	71.5 ± 9.1	77.8 ± 6.9	73.3 ± 7.6	73.0 ± 9.2	Aβ ⁻ CU and Aβ ⁺ CU ^{***} Aβ ⁻ MCI and Aβ ⁺ CU ^{***} Aβ ⁺ CU and Aβ ⁺ MCI [*] Aβ ⁺ CU and AD ^{**}
Sex, female/male	40/48	27/31	37/28	38/43	67/60	n.s.
Education ± SD, years	15.3 ± 2.8	15.7 ± 3.0	15.2 ± 3.6	15.8 ± 3.1	14.3 ± 3.1	Aβ ⁺ MCI and AD ^{**}
MMSE ± SD	29.4 ± 0.8	28.2 ± 2.3	28.4 ± 2.2	27.1 ± 2.6	22.6 ± 3.0	Aβ ⁻ CU and Aβ ⁻ MCI [*] Aβ ⁻ CU and Aβ ⁺ MCI ^{***} Aβ ⁻ CU and AD ^{***} Aβ ⁻ MCI and Aβ ⁺ MCI [*] Aβ ⁻ MCI and AD ^{***} Aβ ⁺ CU and Aβ ⁺ MCI [*] Aβ ⁺ CU and AD ^{***} Aβ ⁺ MCI and AD ^{***}
APOE ε4 alleles (0/1/2)	70/14/1	42/13/1	33/28/4	32/33/14	38/62/25 ^a	Aβ ⁻ CU and Aβ ⁺ CU ^{***} Aβ ⁻ CU and Aβ ⁺ MCI ^{***} Aβ ⁻ CU and AD ^{***} Aβ ⁻ MCI and Aβ ⁺ CU ^{**} Aβ ⁻ MCI and Aβ ⁺ MCI ^{***} Aβ ⁻ MCI and AD ^{***} Aβ ⁺ CU and AD ^{**}
Baseline tau						
Temporal meta-ROI SUVR (mean ± SD)	1.15 ± 0.08	1.14 ± 0.09	1.24 ± 0.13	1.32 ± 0.36	1.73 ± 0.36	Aβ ⁻ CU and Aβ ⁺ MCI ^{***} Aβ ⁻ CU and AD ^{***} Aβ ⁻ MCI and Aβ ⁺ MCI ^{***} Aβ ⁻ MCI and AD ^{***} Aβ ⁺ CU and Aβ ⁺ MCI ^{***} Aβ ⁺ CU and AD ^{***} Aβ ⁺ MCI and AD ^{***}
Neocortical ROI SUVR (mean ± SD)	1.06 ± 0.07	1.04 ± 0.08	1.10 ± 0.08	1.20 ± 0.23	1.36 ± 0.30	Aβ ⁻ CU and Aβ ⁺ MCI ^{***} Aβ ⁻ CU and AD ^{***} Aβ ⁻ MCI and Aβ ⁺ MCI ^{***} Aβ ⁻ MCI and AD ^{***} Aβ ⁺ CU and Aβ ⁺ MCI [*] Aβ ⁺ CU and AD ^{***} Aβ ⁺ MCI and AD ^{***}
Baseline tau %/year						
Temporal meta-ROI %/year (mean ± SD)	0.4 ± 2.7	-0.4 ± 2.3	1.2 ± 2.8	3.0 ± 5.3	2.9 ± 5.7	Aβ ⁻ CU and Aβ ⁺ MCI ^{***} Aβ ⁻ CU and AD ^{***} Aβ ⁻ MCI and Aβ ⁺ MCI ^{***} Aβ ⁻ MCI and AD ^{***}
Neocortical ROI %/year, mean ± SD	0.5 ± 2.9	-0.3 ± 2.9	0.8 ± 2.6	2.2 ± 5.0	2.9 ± 5.1	Aβ ⁻ CU and AD ^{***} Aβ ⁻ MCI and Aβ ⁺ MCI ^{***} Aβ ⁻ MCI and AD ^{***} Aβ ⁺ CU and AD ^{**}
Tau slopes						
Temporal meta-ROI (SUVR/year), mean ± SD	0.004 ± 0.031	-0.005 ± 0.027	0.016 ± 0.036	0.052 ± 0.098	0.049 ± 0.114	Aβ ⁻ CU and Aβ ⁺ MCI ^{**} Aβ ⁻ CU and AD ^{***} Aβ ⁻ MCI and Aβ ⁺ MCI ^{***} Aβ ⁻ MCI and AD ^{***}
Neocortical ROI (SUVR/year), mean ± SD	0.005 ± 0.030	-0.003 ± 0.029	0.009 ± 0.029	0.031 ± 0.076	0.041 ± 0.080	Aβ ⁻ CU and Aβ ⁺ MCI [*] Aβ ⁻ CU and AD ^{***} Aβ ⁻ MCI and Aβ ⁺ MCI ^{***} Aβ ⁻ MCI and AD ^{***} Aβ ⁺ CU and AD ^{**}

Aβ⁻ = amyloid-β-negative; Aβ⁺ = amyloid-β-positive; AD = Alzheimer's disease dementia; CU = cognitively unimpaired; n.s. = not significant; ROI = region of interest.

P* < 0.05; *P* < 0.01; ****P* < 0.001.

^aAPOE status not available for two individuals.

Table 2 Results of linear models for tau accumulation

Coefficient	Estimate ± SE	T-value	P-value
Temporal meta-region of interest			
APOE ε4 status	−0.0027 ± 0.0085	−0.315	0.753
Amyloid-β status	0.0298 ± 0.0107	2.785	0.006**
Age	−0.0012 ± 0.0005	−2.494	0.013*
Sex	0.0220 ± 0.0077	2.855	0.005**
Baseline tau	0.0577 ± 0.0151	3.827	< 0.001***
Study Avid 05	0.015 ± 0.010	1.472	0.141
Study Exp 3	0.008 ± 0.017	0.465	0.642
Study BF	0.020 ± 0.013	1.551	0.122
CU	0.009 ± 0.017	0.530	0.596
MCI	0.016 ± 0.016	1.011	0.312
Neocortical region of interest			
APOE ε4 status	−0.0025 ± 0.0062	−0.398	0.691
Amyloid-β status	0.0145 ± 0.0062	1.865	0.062
Age	−0.0005 ± 0.0004	−1.501	0.134
Sex	0.0164 ± 0.0057	2.903	0.004**
Baseline tau	0.0801 ± 0.0160	5.014	< 0.001***
Study Avid 05	0.012 ± 0.008	1.604	0.109
Study Exp 3	0.009 ± 0.013	0.727	0.468
Study BF	0.015 ± 0.010	1.549	0.122
CU	−0.003 ± 0.012	−0.259	0.796
MCI	0.001 ± 0.011	0.073	0.942

Linear models were analysed for each region using the slopes of tau accumulation. Statistical model: Tau slopes ~ APOE ε4 status + amyloid-β status + age + sex + study + diagnosis + baseline tau SUVR. CU = cognitively unimpaired; SE = standard error. Values in bold represent statistically significant effects.

* $P < 0.05$; ** $P < 0.01$; *** $P < 0.001$.

slopes ~ APOE ε4 status (present/not present) + amyloid-β status (positive/negative) + age + sex + study cohort + diagnosis (cognitively unimpaired/MCI/Alzheimer's disease dementia) + baseline tau. We tested for interactions between age × amyloid and sex × amyloid. When examining amyloid-β accumulation in ADNI we used the linear model amyloid-β Slope ~ APOE ε4 status + amyloid-β status + age + sex. Statistical significance was assumed at $P < 0.05$ (two-sided). Statistical analyses were performed using R (version 3.6.2).

Data availability

Anonymized data will be shared by request from a qualified academic investigator for the sole purpose of replicating procedures and results presented in the article and as long as data transfer is in agreement with EU legislation on the general data protection regulation and decisions by the Ethical Review Board of Sweden and Region Skane, which should be regulated in a material transfer agreement.

Results

Participants

In this study we examined 419 participants, including amyloid-β-negative cognitively unimpaired subjects or patients with MCI as well as amyloid-β-positive cognitively

unimpaired subjects, and patients with MCI or Alzheimer's disease dementia from four different cohorts. Participant characteristics and demographic data are presented in Table 1 (characteristics for each separate cohort are presented in Supplementary Table 1). Amyloid-β-positive cognitively unimpaired were significantly older than the other participants. There was no difference in sex distribution between groups (Table 1). The amyloid-β-positive groups exhibited higher tau-signal in the temporal region of interest and in the widespread neocortical region of interest, with the highest values in Alzheimer's disease dementia (Table 1 and Supplementary Fig. 1).

Longitudinal change in ¹⁸F-flortaucipir retention

Slopes representing the unadjusted change in ¹⁸F-flortaucipir SUVR per year were generated from linear regressions of the tau-PET SUVRs plotted against interscan intervals. Increased accumulation rate in the tau-PET signal was observed in amyloid-β-positive MCI and Alzheimer's disease dementia, respectively, when compared to either amyloid-β-negative cognitively unimpaired, amyloid-β-negative MCI and amyloid-β-positive cognitively unimpaired, when using both the temporal region of interest and the neocortical region of interest (Table 1 and Fig. 1A and B). Individual longitudinal changes in tau-PET SUVR over time are depicted in Fig. 1C and D.

Factors associated with increased rate of ¹⁸F-flortaucipir change

To elucidate the factors associated with an increased rate of tau accumulation, linear models were analysed with tau-PET slopes as outcome variable and age, sex, APOE ε4 genotype, amyloid-β-status, study cohort, diagnosis and baseline tau-PET SUVR simultaneously as predictors. Results for the two tau-PET regions of interest are detailed in Table 2 and results are visualized in Fig. 2. There were associations between change in tau-PET over time and female sex (temporal region of interest: $t = 2.86$, $P = 0.005$; neocortical region of interest: $t = 2.90$, $P = 0.004$), lower age (temporal region of interest: $t = -2.49$, $P = 0.013$), and baseline tau-PET signal (temporal region of interest: $t = 3.83$, $P < 0.001$; neocortical region of interest: $t = 5.01$, $P < 0.001$), indicating that they were independent predictors of increased accumulation rate of tau pathology (Fig. 2). There was a significant interaction between age and amyloid-β-status on change in tau-PET (temporal region of interest: $t = -2.39$, $P = 0.018$), suggesting that the effect of lower age was only observed in amyloid-β-positive subjects (Fig. 2B). There were no effects of diagnosis, study cohort or APOE ε4 status. Using partial volume corrected data produced similar results (Supplementary Table 6).

As preliminary evidence indicates that females may have higher tau-PET signal in off-target binding in the skull/

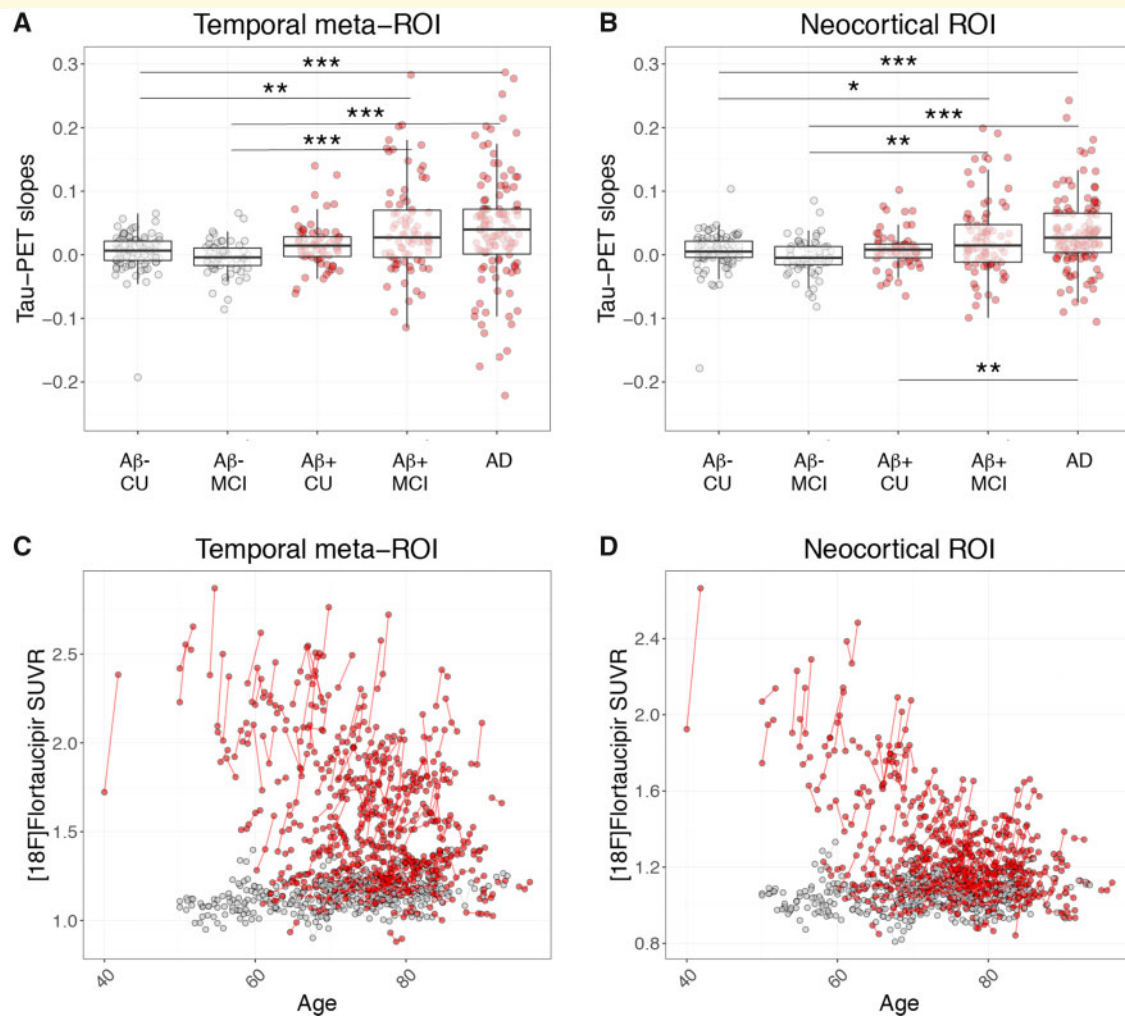


Figure 1 ^{18}F -flortaucipir slopes and longitudinal change. ^{18}F -flortaucipir SUVR/year slopes in (A) the temporal meta-region, and (B) the neocortical region of interest. Box plots depict median value and the interquartile ranges. (C and D) Longitudinal ^{18}F -flortaucipir SUVRs plotted against age in (C) the temporal meta-region, and (D) the neocortical region of interest. Red dots = amyloid- β -positive ($\text{A}\beta+$); grey dots = amyloid- β -negative ($\text{A}\beta-$). AD = Alzheimer's disease dementia; CU = cognitively unimpaired. Note that the y-axes in A and B have been cut for visualization purposes. Some individuals in the amyloid- β -positive MCI and Alzheimer's disease groups with high slopes are outside of the maximum y-limit. Scaled versions of A and B with all participants are provided in [Supplementary Fig. 2](#).

meninges (Minhas *et al.*, 2020), a region of interest encompassing these regions was created to control for this potential effect. To control for a potential effect of off-target binding in the skull/meninges we created a region of interest surrounding the brain, encompassing these off-target structures (Supplementary Fig. 3). The 'off-target region of interest' was adjusted for cortical retention to compensate for bleeding in of true cortical signal (see Supplementary material for details). Using the retention in the off-target region of interest we found no increased retention longitudinally and no effect of sex on off-target binding (Supplementary Fig. 4 and Supplementary Tables 7 and 8). Further, including the SUVR value of this off-target region of interest as a covariate in the analysis did not alter the sex effect on tau-PET accumulation in the temporal and neocortical regions of interest. In a similar analysis, we studied

longitudinal tau accumulation in regions of interest located away from the surface of the brain, namely the amygdala and the precuneus/posterior cingulate, and also found strong sex effects in these regions (amygdala: $t = 3.3$, $P = 0.001$; precuneus/posterior cingulate: $t = 3.4$, $P < 0.001$; Supplementary Table 9).

Factors associated with increased rate of change in amyloid- β

APOE $\epsilon 4$ has been shown to be associated to an increased rate of amyloid- β accumulation in subjects that were amyloid- β -negative at baseline (Ge *et al.*, 2018). To study whether the females and younger individuals also have an increased accumulation rate of amyloid- β fibrils, we studied a sample consisting of 639 ADNI participants

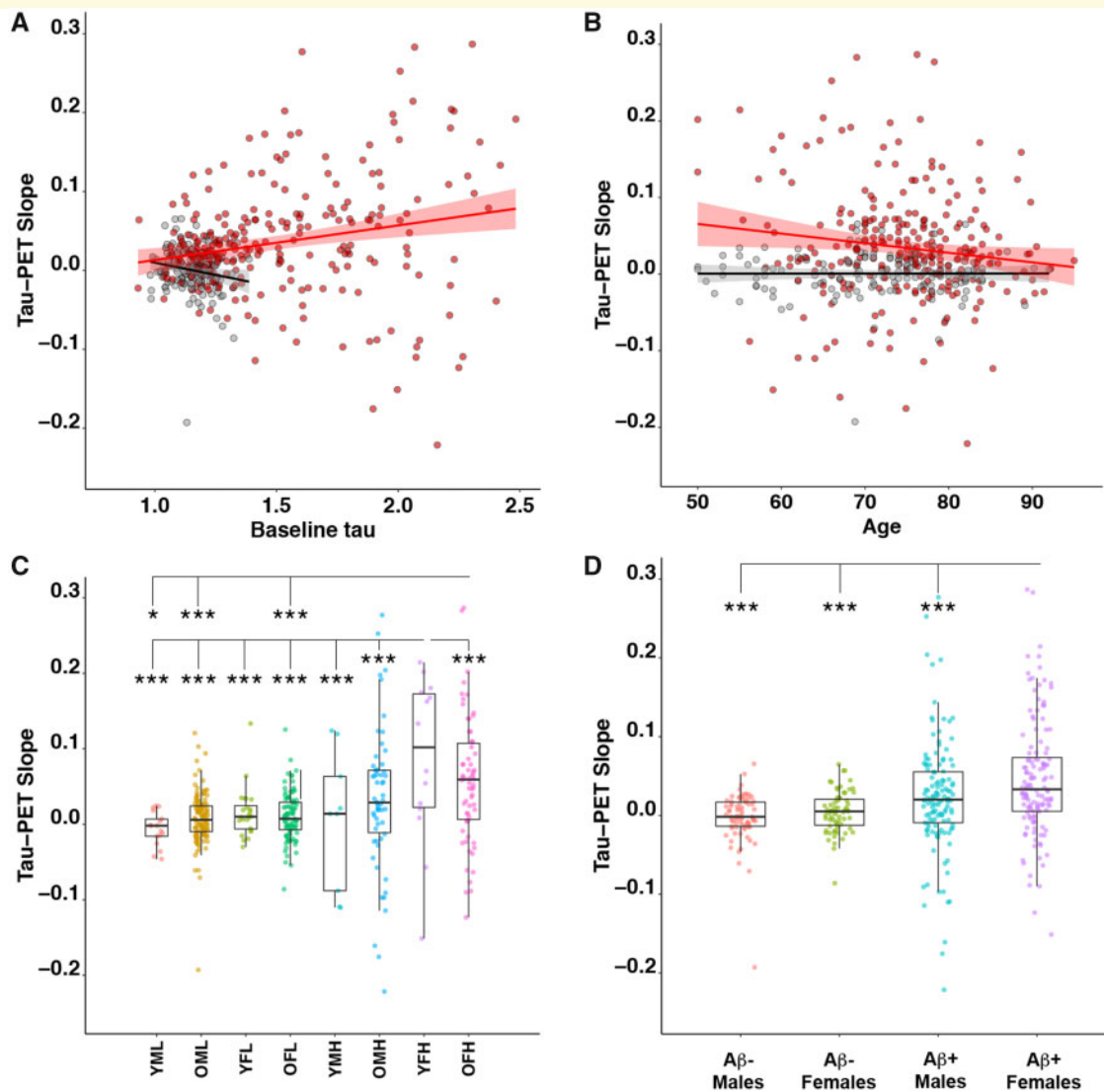


Figure 2 Effects on the rate of tau accumulation of baseline tau, age, amyloid status and sex. **(A)** The effects of baseline tau on the slopes of tau accumulation in the temporal meta-region of interest. Linear regressions within amyloid- β -positive ($A\beta^+$) are shown in red [slope 0.068 (95% CI 0.038 to 0.099); $P < 0.001$] and amyloid- β -negative ($A\beta^-$) in black [slope -0.062 (95% CI -0.003 to 0.122); $P = 0.04$]. **(B)** The effect of age on temporal meta-region of interest tau slopes. Linear regressions within amyloid- β -positive are shown in red [slope -0.003 (95% CI -0.0018 to -0.0044); $P < 0.001$] and amyloid- β -negative in black [slope -0.000 (95% CI -0.0005 to 0.0005); $P = 0.981$], respectively. **(C)** The effect of baseline tau [low (L) or high (H), high; cut-off 1.34 SUVR], age [young (Y) (< 65 years) or old (O) (> 65 years)] and sex [female (F) or male (M)] on tau-PET slopes in the temporal meta-region of interest. **(D)** Tau slopes in amyloid- β -positive and amyloid- β -negative males and females. The y-axes have been cut (leaving out a few individuals with high tau accumulation rate) for better visualization of the data. * $P < 0.05$, *** $P < 0.001$.

(amyloid- β -negative cognitively unimpaired $n = 155$, amyloid- β -negative MCI $n = 145$, amyloid- β -positive cognitively unimpaired $n = 101$, amyloid- β -positive MCI $n = 204$ and Alzheimer's disease $n = 34$; for details see [Supplementary Table 5](#)) with longitudinal ^{18}F -florbetapir PET scans. A linear model with amyloid- β slope in a neocortical composite as outcome variable and $APOE \epsilon 4$ status, amyloid- β -status, age and sex as predictors was used. We found positive associations of $APOE \epsilon 4$ positivity ($t = 2.0$, $P < 0.05$), amyloid- β positivity ($t = 4.8$,

$P < 0.001$) and higher age ($t = 2.4$, $P < 0.05$) with the rate of amyloid- β accumulation, but no effect of sex (for details see [Supplementary Table 10](#)).

Discussion

Tau-PET using ^{18}F -flortaucipir has proven a reliable marker of tau pathology in Alzheimer's disease ([Cho *et al.*, 2016](#); [Johnson *et al.*, 2016](#); [Ossenkoppele *et al.*, 2016, 2018](#);

Scholl *et al.*, 2016; Smith *et al.*, 2019). In this study we analysed the largest longitudinal dataset thus far, comprising 419 patients from four different cohort studies in the US (ADNI, Avid 05e and Expedition-3) and Sweden (BioFINDER). We found an increased rate of tau accumulation in amyloid- β -positive MCI and Alzheimer's disease compared to amyloid- β -negative cognitively unimpaired, amyloid- β -negative MCI and amyloid- β -positive cognitively unimpaired participants. When analysing factors related with an increased rate of tau accumulation, we found that the strongest predictors were higher baseline tau load and female sex. Further, in the temporal region of interest there was an interaction between amyloid- β status and younger age such that younger amyloid- β -positive individuals had higher rates of tau deposition. These results remained significant after partial volume correction, and were not related to or explained by sex differences in off-target binding in the skull or meninges.

Recently there have been a number of publications addressing the longitudinal accumulation of tau in Alzheimer's disease using tau-PET (Jack *et al.*, 2018; Southekal *et al.*, 2018; Cho *et al.*, 2019; Hanseeuw *et al.*, 2019; Harrison *et al.*, 2019; Pontecorvo *et al.*, 2019). The main findings have been yearly increases ranging from -1.2 to 0.5% /year in cognitively unimpaired (Jack *et al.*, 2018; Cho *et al.*, 2019; Pontecorvo *et al.*, 2019) and from 1.5 to 5.0% /year in cognitively impaired subjects (Jack *et al.*, 2018; Cho *et al.*, 2019; Pontecorvo *et al.*, 2019). Here, we report similar findings with SUVR increases of $3.0 \pm 5.5\%$ in the temporal region of interest of amyloid- β -positive MCI and Alzheimer's disease compared to $0.1 \pm 2.6\%$ in amyloid- β -negative participants. We found similar, albeit less pronounced, increases in SUVRs in amyloid- β -positive MCI (2.2%) and Alzheimer's disease (2.9%) in the neocortical region of interest. Our study sample ($n = 419$) is more than two times larger than the largest previously studied cohort, allowing us more power in assessing the risk factors associated to increased rate of tau accumulation.

Alzheimer's disease dementia is more common in females than in males (Andersen *et al.*, 1999; Mielke *et al.*, 2014; Chene *et al.*, 2015), and according to neuropathology studies females have higher CERAD and Braak scores (Hohman *et al.*, 2018), indicating greater amyloid- β and tau pathology at death. Using cross-sectional tau-PET data in cognitively unimpaired subjects, it has been suggested that females have a higher tau load in the entorhinal cortex compared to males (Buckley *et al.*, 2019), and that this increased tau level in females was associated with a higher amyloid- β burden, but not with *APOE* $\epsilon 4$ -carrier status (Buckley *et al.*, 2019). Another study in ADNI instead found an interaction of *APOE* $\epsilon 4$ status and sex on entorhinal tau (Liu *et al.*, 2019). But the available data are limited, and in cross-sectional analyses, it is difficult to determine whether the increased tau load is due to a more rapid accumulation or whether it is a consequence of higher brain resilience to the effects of tau in females, allowing them to remain free of cognitive impairment despite higher tau loads. However, the present

study clearly shows that female sex is associated with an increased accumulation rate of tau pathology, even when adjusting for baseline tau load.

Alzheimer's disease dementia is more common among females than males (Mielke *et al.*, 2014), but cerebral amyloid pathology is not more prevalent among non-demented females (Jansen *et al.*, 2015). A possible explanation for this discrepancy could be a more rapid accumulation of tau in amyloid positive females. In line with this, cognitive deterioration was faster in female MCI participants in ADNI compared to males (Lin *et al.*, 2015), and females showed a higher risk of progression from MCI to dementia (Tifratene *et al.*, 2015). Further, females with MCI or Alzheimer's disease have a 1 – 1.5% higher rate of brain atrophy compared to males (Hua *et al.*, 2010), and more females show severe tau pathology at autopsy (Filon *et al.*, 2016). The reasons for the increased rate of tau accumulation and the increased progression rates are unclear, but sex differences in comorbidities, neurotrophic factors, inflammation and synapse biology have been suggested as potentially involved in differences in cognitive decline (for a review see Ferretti *et al.*, 2018). In our data, the effect of sex on disease progression was tau specific in that we did not find any effect of sex on the rate of amyloid- β accumulation. When analysing amyloid- β accumulation in a separate cohort from ADNI we instead find that baseline amyloid- β positivity, the presence of *APOE* $\epsilon 4$, and older age were associated with a more rapid amyloid- β accumulation. In a similar analysis, Ge *et al.* (2018) found *APOE* $\epsilon 4$ status to be associated with an increased rate of amyloid- β accumulation in participants that were amyloid- β -negative at baseline, but not among the amyloid- β -positive participants. The tau and amyloid- β cohorts used in this study were different when it comes to the number of participants in the different diagnostic groups and the age of cognitively unimpaired participants and the results should be interpreted with this in mind.

Autopsy studies have indicated that patients with early-onset Alzheimer's disease harbour greater tau pathology than late-onset Alzheimer's disease (Hansen *et al.*, 1988; Ho *et al.*, 2002), and cross-sectional tau-PET studies have revealed higher tau-PET signal in younger Alzheimer's disease patients (Ossenkoppele *et al.*, 2016; Day *et al.*, 2017; Koychev *et al.*, 2017; Pontecorvo *et al.*, 2017b; Scholl *et al.*, 2017). In this longitudinal study, we showed that lower age in amyloid- β -positive subjects was associated with a faster accumulation rate of tau pathology, independent of sex and baseline tau load, providing evidence that younger cases with Alzheimer's disease pathology exhibit an increased rate of tau accumulation over time. A limitation is that most of our subjects were older [$n = 69$ (16%) were below age 65]. Because of the relatively small number of young subjects, the power to detect age-related effects was lower, and results will need to be reproduced in a larger dataset.

Interestingly, we found no independent effect of *APOE* $\epsilon 4$ positivity on the rate of tau accumulation. This is in contrast to recent cross-sectional studies that found *APOE* $\epsilon 4$ to be associated with increased levels of tau-PET retention in the

medial temporal lobe independent of amyloid- β status (Mattsson *et al.*, 2018; Therriault *et al.*, 2019), but also greater tau load in the parietal and occipital lobes in *APOE* $\epsilon 4$ negative participants. When analysing the different cohorts separately we found an effect of *APOE* $\epsilon 4$ on tau accumulation in ADNI (temporal meta-region of interest: $t = 3.8$, $P < 0.001$; neocortical: $t = 4.6$, $P < 0.001$), but not in any of the other cohorts. Similarly, the effect of *APOE* $\epsilon 4$ on cognitive decline in amyloid- β -positive subjects has been shown to vary widely between different cohorts (Insel *et al.*, 2019), indicating that the amyloid- β -independent effects of *APOE* $\epsilon 4$ on tau propagation and cognitive decline are rather weak and cohort-dependent.

Our results indicate that the accumulation rate of tau is increased in females and younger amyloid- β -positive individuals as well as in subjects with higher baseline tau load, while the rate of amyloid- β accumulation is associated with older age, *APOE* $\epsilon 4$ positivity and baseline amyloid- β positivity. These results may provide insights into the optimal design of therapeutic drug trials in Alzheimer's disease. It might, for instance, be important to include younger amyloid- β -positive females for a more robust and rapid read out, but might also be important to match the treatment and placebo arms for age, sex and baseline tau load.

A limitation of the present study is that the data were acquired at different sites and that the protocol for data acquisition was not uniform. We dealt with this limitation by centrally processing the reconstructed images at Lund University, thus minimizing differences in region of interest and reference region delineation as well as using a uniform method for partial volume correction. Nonetheless, there were between cohort differences in the type of PET scanner used, and in the age, sex distribution and educational background of the participants. Because of these differences, the study cohort was included as a covariate in the analyses and no study cohort specific effects were observed, except for the association between *APOE* $\epsilon 4$ and tau accumulation in ADNI as discussed earlier, and a weak effect of study cohort in PVE-corrected neocortical region of interest data (Supplementary Table 6). Further, the study does not include longitudinal cognitive data. The effects of an increased tau accumulation rate on cognition will be the focus of a future study. Another limitation was the variability of the longitudinal data, where some amyloid- β -positive MCI and Alzheimer's disease patients showed relative decreases over time, which is a well-known phenomenon (Jack *et al.*, 2018; Cho *et al.*, 2019; Harrison *et al.*, 2019; Pontecorvo *et al.*, 2019). The reasons for these negative SUVR changes in some individuals are not yet well understood and merit study in more detail in future work. The effects seen on age and sex were not driven by the subjects with negative tau accumulation rates since even after removing tau-positive subjects that showed negative tau-PET slopes age and sex remained significant predictors. We thus found an effect of female sex and a negative effect of age on the rate of tau accumulation in Alzheimer's disease. The age effect was weaker and was only found in the temporal lobes, whereas

the sex effect was more robust and was seen throughout the brain. However, despite this cohort being the largest published thus far, the data should be considered preliminary until replicated in other cohorts.

In conclusion, the present longitudinal tau-PET study suggests that tau accumulation rate is increased in females and younger amyloid- β -positive individuals as well as in subjects with higher baseline tau load. This contrasts with amyloid- β accumulation, which is increased in *APOE* $\epsilon 4$ carriers and older individuals. These findings might improve our understanding of the mechanisms behind tau accumulation and carry implications for the design of clinical trials directed against tau pathology in Alzheimer's disease.

Funding

Work at Lund University was supported by the Swedish Research Council, the Knut and Alice Wallenberg foundation, the Marianne and Marcus Wallenberg foundation, the Strategic Research Area MultiPark (Multidisciplinary Research in Parkinson's disease) at Lund University, the Swedish Alzheimer Foundation, the Swedish Brain Foundation, The Parkinson foundation of Sweden, The Parkinson Research Foundation, the Skåne University Hospital Foundation, the Medical Faculty at Lund University, Region Skåne, and the Swedish federal government under the ALF agreement. The precursor of ^{18}F -flor-taucipir was kindly provided by Avid Radiopharmaceuticals.

Competing interests

R.S., O.S., A.L., S.P., R.O., N.M.C. report no disclosures. O.H. has acquired research support (for the institution) from Roche, Pfizer, GE Healthcare, Biogen, AVID Radiopharmaceuticals and Euroimmun. In the past 2 years, he has received consultancy/speaker fees (paid to the institution) from Biogen and Roche. M.D. and M.P. are full time employees of Avid Radiopharmaceuticals, a wholly owned subsidiary of Eli Lilly.

Supplementary material

Supplementary material is available at *Brain* online.

References

- Albert MS, DeKosky ST, Dickson D, Dubois B, Feldman HH, Fox NC, et al. The diagnosis of mild cognitive impairment due to Alzheimer's disease: recommendations from the National Institute on Aging-Alzheimer's Association workgroups on diagnostic guidelines for Alzheimer's disease. *Alzheimers Dement* 2011; 7: 270–9.
- Andersen K, Launer LJ, Dewey ME, Letenneur L, Ott A, Copeland JR, et al. Gender differences in the incidence of AD and vascular dementia: the EURODEM Studies. EURODEM Incidence Research Group. *Neurology* 1999; 53: 1992–7.

- Bethausen TJ, Cody KA, Zammit MD, Murali D, Converse AK, Barnhart TE, et al. In vivo characterization and quantification of neurofibrillary tau PET Radioligand (18)F-MK-6240 in humans from Alzheimer Disease. *J Nucl Med* 2019; 60: 93–9.
- Braak H, Braak E. Neuropathological staging of Alzheimer-related changes. *Acta Neuropathol* 1991; 82: 239–59.
- Buckley RF, Mormino EC, Rabin JS, Hohman TJ, Landau S, Hanseuw BJ, et al. Sex differences in the association of global amyloid and regional tau deposition measured by positron emission tomography in clinically normal older adults. *JAMA Neurol* 2019; 76: 542–51.
- Chene G, Beiser A, Au R, Preis SR, Wolf PA, Dufouil C, et al. Gender and incidence of dementia in the Framingham Heart Study from mid-adult life. *Alzheimers Dement* 2015; 11: 310–20.
- Chien DT, Bahri S, Szardenings AK, Walsh JC, Mu F, Su MY, et al. Early clinical PET imaging results with the novel PHF-tau radioligand [F-18]-T807. *J Alzheimers Dis* 2013; 34: 457–68.
- Cho H, Choi JY, Hwang MS, Lee JH, Kim YJ, Lee HM, et al. Tau PET in Alzheimer disease and mild cognitive impairment. *Neurology* 2016; 87: 375–83.
- Cho H, Choi JY, Lee HS, Lee JH, Ryu YH, Lee MS, et al. Progressive tau accumulation in Alzheimer's disease: two-year follow-up study. *J Nucl Med* 2019; 60: 1611–21.
- Day GS, Gordon BA, Jackson K, Christensen JJR, Ponisio M, Su Y, et al. Tau-PET binding distinguishes patients with early-stage posterior cortical atrophy from amnesic Alzheimer disease dementia. *Alzheimer Dis Assoc Disord* 2017; 31: 87–93.
- Declercq L, Rombouts F, Koole M, Fierens K, Marien J, Langlois X, et al. Preclinical evaluation of (18)F-JNJ64349311, a novel PET tracer for tau imaging. *J Nucl Med* 2017; 58: 975–81.
- Digma LA, Madsen JR, Rissman RA, Jacobs DM, Brewer JB, Banks SJ, et al. Women can bear a bigger burden: ante- and post-mortem evidence for reserve in the face of tau. *Brain Commun* 2020; 2: fcaa025.
- Ferretti MT, Iulita MF, Cavado E, Chiesa PA, Schumacher Dimech A, Santuccione Chadha A, et al. Sex differences in Alzheimer disease - the gateway to precision medicine. *Nat Rev Neurol* 2018; 14: 457–69.
- Filon JR, Intorcija AJ, Sue LI, Vazquez Arreola E, Wilson J, Davis KJ, et al. Gender differences in Alzheimer disease: brain atrophy, histopathology burden, and cognition. *J Neuropathol Exp Neurol* 2016; 75: 748–54.
- Ge T, Sabuncu MR, Smoller JW, Sperling RA, Mormino EC. Alzheimer's disease neuroimaging I. Dissociable influences of APOE epsilon4 and polygenic risk of AD dementia on amyloid and cognition. *Neurology* 2018; 90: e1605.e12.
- Grundke-Iqbal I, Iqbal K, Tung YC, Quinlan M, Wisniewski HM, Binder LI. Abnormal phosphorylation of the microtubule-associated protein tau (tau) in Alzheimer cytoskeletal pathology. *Proc Natl Acad Sci USA* 1986; 83: 4913–7.
- Hahn A, Schain M, Erlandsson M, Sjolín P, James GM, Strandberg OT, et al. Modeling strategies for quantification of in vivo 18F-AV1451 binding in patients with tau pathology. *J Nucl Med* 2017; 58: 623–31.
- Hanseuw BJ, Betensky RA, Jacobs HIL, Schultz AP, Sepulcre J, Becker JA, et al. Association of amyloid and tau with cognition in preclinical Alzheimer disease: a longitudinal study. *JAMA Neurol* 2019; 76: 915–24.
- Hansen LA, DeTeresa R, Davies P, Terry RD. Neocortical morphometry, lesion counts, and choline acetyltransferase levels in the age spectrum of Alzheimer's disease. *Neurology* 1988; 38: 48–54.
- Harada R, Okamura N, Furumoto S, Furukawa K, Ishiki A, Tomita N, et al. 18F-THK5351: a novel PET radiotracer for imaging neurofibrillary pathology in Alzheimer disease. *J Nucl Med* 2016; 57: 208–14.
- Harrison TM, La Joie R, Maass A, Baker SL, Swinnerton K, Fenton L, et al. Longitudinal tau accumulation and atrophy in aging and Alzheimer disease. *Ann Neurol* 2019; 85: 229–40.
- Ho GJ, Hansen LA, Alford MF, Foster K, Salmon DP, Galasko D, et al. Age at onset is associated with disease severity in Lewy body variant and Alzheimer's disease. *Neuroreport* 2002; 13: 1825–8.
- Hohman TJ, Dumitrescu L, Barnes LL, Thambisetty M, Beecham G, Kunkle B, et al. Sex-specific association of apolipoprotein E with cerebrospinal fluid levels of tau. *JAMA Neurol* 2018; 75: 989–98.
- Honig LS, Vellas B, Woodward M, Boada M, Bullock R, Borrie M, et al. Trial of solanezumab for mild dementia due to Alzheimer's disease. *N Engl J Med* 2018; 378: 321–30.
- Hua X, Hibar DP, Lee S, Toga AW, Jack CR Jr, Weiner MW, et al. Sex and age differences in atrophic rates: an ADNI study with n=1368 MRI scans. *Neurobiol Aging* 2010; 31: 1463–80.
- Insel PS, Weiner M, Mackin RS, Mormino E, Lim YY, Stomrud E, et al. Determining clinically meaningful decline in preclinical Alzheimer disease. *Neurology* 2019; 93: e322–e33.
- Jack CR Jr, Knopman DS, Weigand SD, Wiste HJ, Vemuri P, Lowe V, et al. An operational approach to National Institute on Aging-Alzheimer's Association criteria for preclinical Alzheimer disease. *Ann Neurol* 2012; 71: 765–75.
- Jack CR Jr, Wiste HJ, Schwarz CG, Lowe VJ, Senjem ML, Vemuri P, et al. Longitudinal tau PET in ageing and Alzheimer's disease. *Brain* 2018; 141: 1517–28.
- Jansen WJ, Ossenkuppe R, Knol DL, Tijms BM, Scheltens P, Verhey FR, et al. Prevalence of cerebral amyloid pathology in persons without dementia: a meta-analysis. *Jama* 2015; 313: 1924–38.
- Jessen F, Amariglio RE, van Boxtel M, Breteler M, Ceccaldi M, Chetelat G, et al. A conceptual framework for research on subjective cognitive decline in preclinical Alzheimer's disease. *Alzheimers Dement* 2014; 10: 844–52.
- Johnson KA, Schultz A, Betensky RA, Becker JA, Sepulcre J, Rentz D, et al. Tau Positron Emission Tomographic imaging in aging and early Alzheimer disease. *Ann Neurol* 2016; 79: 110–9.
- Koychev I, Gunn RN, Firouzian A, Lawson J, Zamboni G, Ridha B, et al. PET tau and amyloid-beta burden in mild Alzheimer's disease: divergent relationship with age, cognition, and cerebrospinal fluid biomarkers. *J Alzheimers Dis* 2017; 60: 283–93.
- Landau SM, Fero A, Baker SL, Koeppe R, Mintun M, Chen K, et al. Measurement of longitudinal beta-amyloid change with 18F-florbetapir PET and standardized uptake value ratios. *J Nucl Med* 2015; 56: 567–74.
- Leuzy A, Chiotis K, Lemoine L, Gillberg PG, Almkvist O, Rodriguez-Vieitez E, et al. Tau PET imaging in neurodegenerative tauopathies - still a challenge. *Mol Psychiatry* 2019; 24: 1112–34.
- Lin KA, Choudhury KR, Rathakrishnan BG, Marks DM, Petrella JR, Doraiswamy PM, et al. Marked gender differences in progression of mild cognitive impairment over 8 years. *Alzheimers Dement (N Y)* 2015; 1: 103–10.
- Liu M, Paranjpe MD, Zhou X, Duy PQ, Goyal MS, Benzinger TLS, et al. Sex modulates the ApoE epsilon4 effect on brain tau deposition measured by (18)F-AV-1451 PET in individuals with mild cognitive impairment. *Theranostics* 2019; 9: 4959–70.
- Mattsson N, Ossenkuppe R, Smith R, Strandberg O, Ohlsson T, Jogi J, et al. Greater tau load and reduced cortical thickness in APOE epsilon4-negative Alzheimer's disease: a cohort study. *Alzheimers Res Ther* 2018; 10: 77.
- Mattsson N, Scholl M, Strandberg O, Smith R, Palmqvist S, Insel PS, et al. 18F-AV-1451 and CSF T-tau and P-tau as biomarkers in Alzheimer's disease. *EMBO Mol Med* 2017; 9: 1212–23.
- McKhann GM, Knopman DS, Chertkow H, Hyman BT, Jack CR Jr, Kawas CH, et al. The diagnosis of dementia due to Alzheimer's disease: recommendations from the National Institute on Aging-Alzheimer's Association workgroups on diagnostic guidelines for Alzheimer's disease. *Alzheimers Dement* 2011; 7: 263–9.
- Mielke MM, Vemuri P, Rocca WA. Clinical epidemiology of Alzheimer's disease: assessing sex and gender differences. *Clin Epidemiol* 2014; 6: 37–48.
- Minhas D, Yu Z, Laymon C, Lopresti B, Snitz B, Tudorascu D, et al. Sex-specific differences in [18F]AV-1451 off-target retention. In:

- 14th Human Amyloid Imaging, Miami, FL, 2020. Poster P34. Available from <https://hai.worldeventsforum.net/hai-book-2020/>
- Okamura N, Furumoto S, Harada R, Tago T, Iwata R, Tashiro M, et al. Characterization of [18F]THK-5351, a novel PET tracer for imaging tau pathology in Alzheimer's disease. *Eur J Nucl Med Mol Imaging* 2014; 41: S260.
- Ossenkoppele R, Lyoo CH, Jester-Broms J, Sudre CH, Cho H, Ryu Yh, et al. Assessment of demographic, genetic, and imaging variables associated with brain resilience and cognitive resilience to pathological tau in patients with Alzheimer disease. *JAMA Neurol* 2020; 77: 632–42.
- Ossenkoppele R, Rabinovici GD, Smith R, Cho H, Scholl M, Strandberg O, et al. Discriminative accuracy of [18F]flortaucipir Positron Emission Tomography for Alzheimer disease vs other neurodegenerative disorders. *Jama* 2018; 320: 1151–62.
- Ossenkoppele R, Schonhaut DR, Scholl M, Lockhart SN, Ayakta N, Baker SL, et al. Tau PET patterns mirror clinical and neuroanatomical variability in Alzheimer's disease. *Brain* 2016; 139 (Pt 5): 1551–67.
- Palmqvist S, Scholl M, Strandberg O, Mattsson N, Stomrud E, Zetterberg H, et al. Earliest accumulation of beta-amyloid occurs within the default-mode network and concurrently affects brain connectivity. *Nat Commun* 2017; 8: 1214.
- Pontecorvo MJ, Arora AK, Devine M, Lu M, Galante N, Siderowf A, et al. Quantitation of PET signal as an adjunct to visual interpretation of florbetapir imaging. *Eur J Nucl Med Mol Imaging* 2017a; 44: 825–37.
- Pontecorvo MJ, Devous MD, Kennedy I, Navitsky M, Lu M, Galante N, et al. A multicentre longitudinal study of flortaucipir (18F) in normal ageing, mild cognitive impairment and Alzheimer's disease dementia. *Brain* 2019; 142: 1723–35.
- Pontecorvo MJ, Devous MD Sr, Navitsky M, Lu M, Salloway S, Schaerf FW, et al. Relationships between flortaucipir PET tau binding and amyloid burden, clinical diagnosis, age and cognition. *Brain* 2017b; 140: 748–63.
- Rousset OG, Ma Y, Evans AC. Correction for partial volume effects in PET: principle and validation. *J Nucl Med* 1998; 39: 904–11.
- Scholl M, Lockhart SN, Schonhaut DR, O'Neil JP, Janabi M, Ossenkoppele R, et al. PET imaging of tau deposition in the aging human brain. *Neuron* 2016; 89: 971–82.
- Scholl M, Ossenkoppele R, Strandberg O, Palmqvist S, Bio Fs S, Jogi J, et al. Distinct 18F-AV-1451 tau PET retention patterns in early- and late-onset Alzheimer's disease. *Brain* 2017; 140: 2286–94.
- Smith R, Wibom M, Olsson T, Hagerstrom D, Jogi J, Rabinovici GD, et al. Posterior accumulation of tau and concordant hypometabolism in an early-onset Alzheimer's disease patient with presenilin-1 mutation. *J Alzheimers Dis* 2016; 51: 339–43.
- Smith R, Wibom M, Pawlik D, Englund E, Hansson O. Correlation of in vivo [18F]flortaucipir with postmortem Alzheimer disease tau pathology. *JAMA Neurol* 2019; 76: 310–7.
- Southehal S, Devous MD Sr, Kennedy I, Navitsky M, Lu M, Joshi AD, et al. Flortaucipir F 18 quantitation using parametric estimation of reference signal intensity. *J Nucl Med* 2018; 59: 944–51.
- Therriault J, Benedet AL, Pascoal TA, Mathotaarachchi S, Chamoun M, Savard M, et al. Association of apolipoprotein E epsilon4 with medial temporal tau independent of amyloid-beta. *JAMA Neurol* 2019.
- Thomas BA, Erlandsson K, Modat M, Thurfjell L, Vandenberghe R, Ourselin S, et al. The importance of appropriate partial volume correction for PET quantification in Alzheimer's disease. *Eur J Nucl Med Mol Imaging* 2011; 38: 1104–19.
- Thurfjell L, Lilja J, Lundqvist R, Buckley C, Smith A, Vandenberghe R, et al. Automated quantification of 18F-flutemetamol PET activity for categorizing scans as negative or positive for brain amyloid: concordance with visual image reads. *J Nucl Med* 2014; 55: 1623–8.
- Tifratene K, Robert P, Metelkina A, Pradier C, Dartigues JF. Progression of mild cognitive impairment to dementia due to AD in clinical settings. *Neurology* 2015; 85: 331–8.
- Wong DF, Comley RA, Kuwabara H, Rosenberg PB, Resnick SM, Ostrowitzki S, et al. Characterization of 3 novel tau radiopharmaceuticals, (11)C-RO-963, (11)C-RO-643, and (18)F-RO-948, in healthy controls and in Alzheimer subjects. *J Nucl Med* 2018; 59: 1869–76.