

Caveolae Act as Membrane Reserves Which Limit Mechanosensitive $I_{Cl,swell}$ Channel Activation during Swelling in the Rat Ventricular Myocyte

Lukasz Kozera, Ed White, Sarah Calaghan*

Institute of Membrane and Systems Biology, University of Leeds, Leeds, United Kingdom

Abstract

Background: Many ion channels are preferentially located in caveolae where compartmentalisation/scaffolding with signal transduction components regulates their activity. Channels that are mechanosensitive may be additionally dependent on caveolar control of the mechanical state of the membrane. Here we test which mechanism underlies caveolar-regulation of the mechanosensitive $I_{Cl,swell}$ channel in the adult cardiac myocyte.

Methodology/Principal Findings: Rat ventricular myocytes were exposed to solution of 0.02 tonicity (T; until lysis), 0.64T for 10–15 min (swelling), and/or methyl- β -cyclodextrin (MBCD; to disrupt caveolae). MBCD and 0.64T swelling reduced the number of caveolae visualised by electron microscopy by 75 and 50% respectively. MBCD stimulated translocation of caveolin 3 from caveolae-enriched buoyant membrane fractions, but both caveolin 1 and 3 remained in buoyant fractions after swelling. $I_{Cl,swell}$ inhibition in control cells decreased time to half-maximal volume ($t_{0.5,vol}$; 0.64T), consistent with a role for $I_{Cl,swell}$ in volume regulation. MBCD-treated cells showed reduced time to lysis (0.02T) and $t_{0.5,vol}$ (0.64T) compared with controls. The negative inotropic response to swelling (an index of $I_{Cl,swell}$ activation) was enhanced by MBCD.

Conclusions/Significance: These data show that disrupting caveolae removes essential membrane reserves, which speeds swelling in hyposmotic conditions, and thereby promotes activation of $I_{Cl,swell}$. They illustrate a general principle whereby caveolae as a membrane reserve limit increases in membrane tension during stretch/swelling thereby restricting mechanosensitive channel activation.

Citation: Kozera L, White E, Calaghan S (2009) Caveolae Act as Membrane Reserves Which Limit Mechanosensitive $I_{Cl,swell}$ Channel Activation during Swelling in the Rat Ventricular Myocyte. PLoS ONE 4(12): e8312. doi:10.1371/journal.pone.0008312

Editor: Rafael Linden, Universidade Federal do Rio de Janeiro (UFRJ), Brazil

Received: July 2, 2009; **Accepted:** November 14, 2009; **Published:** December 14, 2009

Copyright: © 2009 Kozera et al. This is an open-access article distributed under the terms of the Creative Commons Attribution License, which permits unrestricted use, distribution, and reproduction in any medium, provided the original author and source are credited.

Funding: This work was supported by a Cardiovascular Institute at Leeds (CRISTAL) Ph.D. studentship to L.K. and the British Heart Foundation (grant number PG/06/047 to S.C, E.W.). The funders had no role in study design, data collection and analysis, decision to publish, or preparation of the manuscript.

Competing Interests: The authors have declared that no competing interests exist.

* E-mail: s.c.calaghan@leeds.ac.uk

Introduction

Caveolae are small (50–100 nm) invaginations of the plasma membrane, found in almost all cells of the body. They represent a specialised form of lipid raft, characterised by the presence of the small protein caveolin, which inserts into the inner leaflet of the membrane via a hairpin loop [1]. The asymmetrical insertion of caveolin, and its tendency to cluster into oligomers gives caveolae their typical flask-like shape [2,3]. Caveolin (Cav) is expressed as 3 major isoforms: Cav 1 and 2 (ubiquitously expressed) and Cav 3 (muscle-specific).

Caveolae have been shown to play a role in a variety of cellular processes including endocytosis, cholesterol homeostasis and signal transduction. Caveolae act as a compartment which brings together elements of the endocytotic machinery, lipid transporters and signal cascade components. Within caveolae, Cav acts as a regulator of protein activity and as a scaffold by interaction via its 20 residue scaffolding domain [4,5]. In addition to their ability to compartmentalise signalling, another property of caveolae, as a reserve of extra membrane [6], may be relevant to their functional role.

We are interested in the contribution of caveolae to volume regulation during swelling in the cardiac myocyte. In the heart, cell

swelling can occur during episodes of ischaemia and reperfusion. During ischaemia, metabolites such as lactate accumulate within the cell causing swelling which is exacerbated on reperfusion, when the hyperosmotic extracellular solution is exchanged for one with normal osmolarity. During swelling, ion channels are activated that regulate cell volume; the main volume-regulatory channel is the swelling activated chloride channel $I_{Cl,swell}$ [7,8]. During swelling, $I_{Cl,swell}$ is considered to be acting as a mechanosensor responding to changes in membrane tension, rather than to decreased intracellular osmolarity, because it can also be activated in response to other mechanical stimuli [9,10].

The first direct evidence for a link between caveolae and volume regulation was made by Trouet *et al.* [11]. These workers showed that Caco-2 cells, which do not express Cav, generate minimal membrane current in response to hypo-osmotic challenge, yet show a pronounced membrane current characteristic of $I_{Cl,swell}$ following transfection with Cav 1. This group went on to show that transfection of Cav-expressing endothelial cells with truncated Cav 1 ($\Delta 1-81$), which displaces endogenous Cav 1 from the lipid raft membrane fractions, impaired activation of $I_{Cl,swell}$ during swelling [12]. These data suggest that the $I_{Cl,swell}$ channel or elements that regulate $I_{Cl,swell}$ require caveolae/caveolin. Consistent with

caveolae's role as a compartment, it has been suggested that they affect volume regulation by bringing together the $I_{Cl,swell}$ channel with tyrosine kinases which regulate channel activity [12,13]. In the cardiac myocyte this might be achieved through the clamping of inhibitory src kinases in an inactive configuration by Cav [14–17].

However, caveolae's property as a membrane reserve is also likely to be relevant to processes like volume regulation that depend on changes in membrane tension. The lipid bilayer can only increase in area by around 3% before rupture, so membrane reserves are essential to allow changes in cell volume to occur without irreversible cell damage [18,19]. Sarcolemmal folds at the Z line and caveolae act as sources of available surface membrane in the ventricular myocyte [20,21]. It has been estimated that 22% of the membrane is in caveolae in the adult rat ventricular myocyte [22], and stretch- and swelling-induced incorporation of caveolae into surface membrane has been reported in a preliminary study by Kohl *et al.* [21]. As a membrane reserve, caveolae could affect the activation of mechanosensitive channels that regulate cell volume (like $I_{Cl,swell}$) by limiting increases in membrane tension for a given change in cell volume. However, the work of Trouet *et al.* [11] is not consistent with a role for caveolae as a membrane reserve which would limit, rather than enhance, $I_{Cl,swell}$ activation.

The aim of the present study was to investigate the effect of swelling on caveolar morphology and density, and to determine the consequences of removing caveolae for processes that depend on $I_{Cl,swell}$ activation (volume regulation, contractility) in the adult ventricular myocyte. Our data are consistent with the hypothesis that caveolae as a membrane reserve attenuate $I_{Cl,swell}$ activation by limiting increases in membrane tension during swelling.

Results

Figure 1 shows the change in myocyte volume in response to 0.64T hypotonic solution. After 9 min in hypotonic solution cell

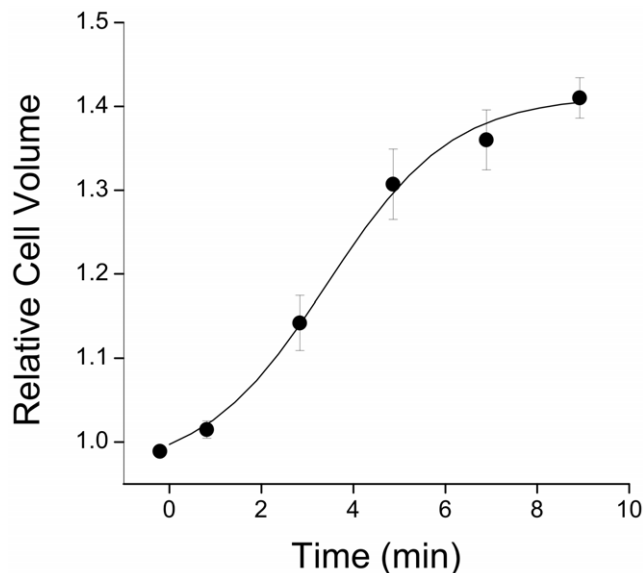


Figure 1. Time-course of myocyte swelling in response to 0.64T hypotonic solution. Myocyte volume was estimated from a video image of the cell, assuming the cell is an elliptical cylinder. Data are fitted with a logistic sigmoidal curve from which values of maximum cell volume and time to half-maximal volume were obtained. Mean \pm S.E.M. from $n = 16$ cells. doi:10.1371/journal.pone.0008312.g001

volume had increased by $41 \pm 2\%$ with a time to half maximal volume of 3.4 ± 0.3 min ($n = 16$ cells). Apparent surface area increased by $16 \pm 1\%$ during this time. The time-course of changes in cell volume represents the sum of increased volume through osmotic swelling and decreased volume through volume-regulatory mechanisms, principally $I_{Cl,swell}$. As volume and apparent surface area measurements are estimates based on a 2-dimensional image of the cell, we consider that it is the time-course of swelling that provides the most sensitive index of processes that modulate volume regulation.

Effect of Hypotonic Challenge on Caveolar Morphology

Figure 2 shows representative electron micrographs of areas of cell membrane from myocytes exposed to isotonic and hypotonic solution for 15 min. In cells exposed to isotonic solution, both invaginations and closed subsarcolemmal vesicles are clearly evident with a diameter consistent with that of caveolae (50–100 nm). A proportion of apparently ‘closed’ caveolae could represent an artefact of sectioning within the bulb of the caveolae, but outside the neck (see Discussion). The density of caveolae was less in myocytes exposed to hypotonic solution (see Figure 2B). Figure 2C summarises mean data for the number of caveolae under isotonic and hypotonic conditions. Swelling was associated with a significant reduction ($P < 0.05$) in the total number of caveolae by around 50%. When the 2 populations of caveolae were considered separately, it was clear that this reduction in caveolae number reflects a reduction in closed caveolae only; the number of open caveolae was identical under isotonic and hypotonic conditions.

Disruption of Caveolae with MBCD

We have previously shown that treatment of myocytes with 2 mM MBCD for 1 h at 37°C depletes caveolae of their 2 essential components, cholesterol and Cav [23]. Here we show the effect of MBCD on caveolar morphology. Figure 3 shows electron micrographs of areas of cell membrane from control and MBCD-treated myocytes, and mean data for the number of open and closed populations of caveolae. The number of identifiable caveolae was reduced by 75% following MBCD treatment ($P < 0.05$) which, by contrast to the effect of swelling, was due to a reduction in both open and closed populations (Figure 3C).

EM data from control cells (Fig. 3) allow us to estimate the proportion of membrane within the caveolar reserve in our myocytes. In ≈ 100 nm sections we see 0.6 caveolae per μm membrane (equating to 6 per μm^2), which is identical to values reported in adult rat myocardium using transmission EM by Patel *et al.* [24], but lower than that reported by Gabella [22] (11 per μm^2). The average diameter of a caveola is ≈ 75 nm which (assuming the caveola is a perfect sphere) means that the caveolar surface membrane area will be $\approx 0.02 \mu\text{m}^2$. Therefore, open and closed caveolae together contribute around 12% to membrane area in these cells. This is lower than a previous estimate of 22% [22], consistent with the difference in measured caveolar density (6 vs. 11 per μm^2).

Do Swelling-Induced Changes in Caveolar Morphology Cause Translocation of Cav 3?

Some mechanical stimuli cause translocation of Cav from caveolae which can have implications for signalling regulated by Cav [25]. Muscle-specific Cav 3 is the predominant isoform in the cardiac myocyte, however Cav 1 has recently been shown to be expressed in these cells [26,27]. Figure 4 shows the distribution of Cav 1 and Cav 3 across membrane fractions under isotonic

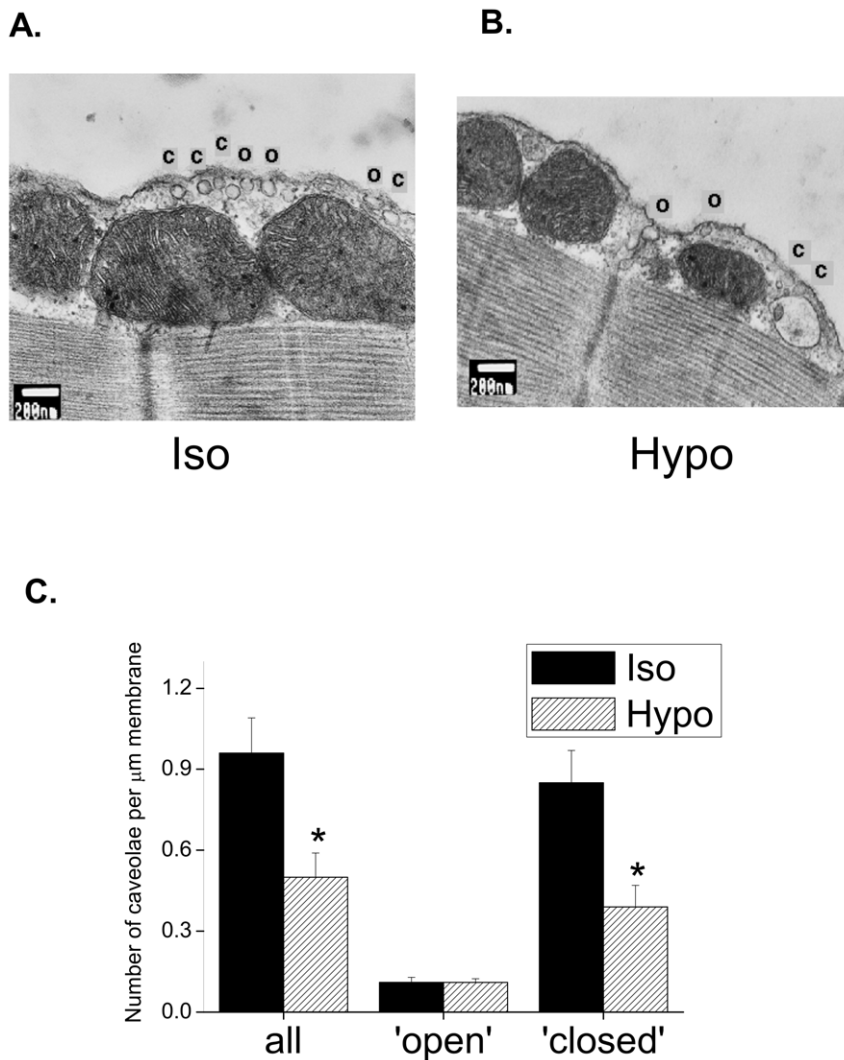


Figure 2. Hypotonic swelling reduces the density of caveolae in the closed configuration. Ventricular myocytes were exposed to isotonic or hypotonic solutions for 15 min. Representative electron micrographs of membrane sections from myocytes in isotonic (A.) and hypotonic (B.) conditions. Caveolae were recorded in both open (O) and closed (C) configurations (see Results). C. Mean data showing that exposure to hypotonic solution reduced the total number of caveolae through a reduction in the closed, but not open, state (* $P < 0.05$ unpaired Student's t-test, $n = 9-11$ cells). doi:10.1371/journal.pone.0008312.g002

conditions and following 15 min exposure to hypotonic solution. In the cardiac myocyte, both isoforms of Cav are enriched in fractions 5 and 6 of the gradient which represent the buoyant cholesterol-containing lipid raft/caveolar fractions [23]. We saw no effect of swelling on the distribution of Cav 1 or Cav 3 between fractions; Cav remained predominantly in the buoyant membrane fractions. These data suggest that, although swelling reduces the number of caveolae, it does not stimulate translocation of Cav.

The molecular identity of $I_{Cl,swell}$ is unknown, although several candidates have been proposed including C1C-3, P-glycoprotein and phospholemman (see [8]). Therefore, we were unable to show whether $I_{Cl,swell}$ channels are present in the caveolae/lipid raft membrane fraction and whether swelling stimulates their translocation.

Estimation of Surface Membrane and Intracellular Membrane Reserves

Next, we measured the effect of disrupting caveolae with MBCD on the maximum increase in volume and surface area,

and time to lysis in cells exposed to a solution of very low osmolarity (0.02T) in order to estimate the surface and intracellular membrane reserves (which include open and closed populations of caveolae respectively) [19]. These data are summarised in Figure 5. In control cells, the maximum increase in volume and apparent surface area were $68 \pm 10\%$ and $24 \pm 5\%$ respectively. There was a tendency for both parameters to be reduced in cells treated with MBCD, although these differences were not significantly different ($P > 0.05$). However, disruption of caveolae significantly reduced ($P < 0.01$) the time to cell lysis from 14.2 ± 1.1 min in control cells to 10.5 ± 1.3 min in MBCD treated cells. These data are consistent with caveolae acting as membrane reserves which protect the cardiac cell from lysis.

Volume Regulation Following Inhibition of $I_{Cl,swell}$ and/or Disruption of Caveolae

$I_{Cl,swell}$ contributes to volume regulation in the cardiac myocyte, limiting cell swelling. In order to assess the way that

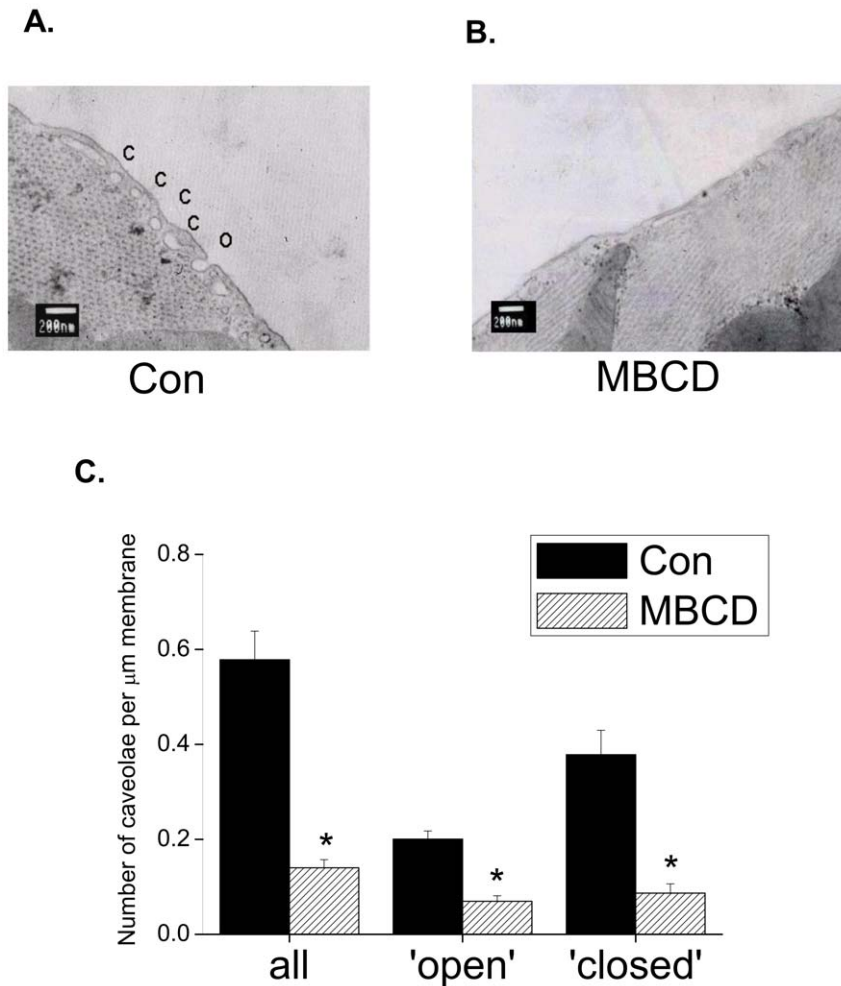


Figure 3. The cholesterol-depleting agent methyl β cyclodextrin (MBCD) reduces the density of open and closed caveolae. Representative electron micrographs of membrane sections from control (A.) and MBCD-treated (B.) myocytes. C. Mean data showing that MBCD reduced the total number of caveolae through a reduction in both open and closed configurations (* $P < 0.05$ unpaired Student's t-test; $n = 11$ cells).

doi:10.1371/journal.pone.0008312.g003

caveolae regulate $I_{Cl,swell}$, we compared the effect of $I_{Cl,swell}$ inhibition and caveolar disruption with MBCD on the cell volume response to hyposmotic challenge (0.64T). In these experiments, tamoxifen (Tmf) was used to block $I_{Cl,swell}$; Tmf is considered a relatively selective blocker of $I_{Cl,swell}$ and at 10 μM fully blocks this current [28]. The time-course of swelling in control cells is shown in Figure 1. Figure 6 summarises values of maximum volume achieved during swelling and the time to half-maximal volume for control cells, cells in which $I_{Cl,swell}$ was inhibited with tamoxifen, MBCD-treated cells, and MBCD treated cells in which $I_{Cl,swell}$ was inhibited with tamoxifen. There was a trend for the maximal volume achieved during swelling to be higher following tamoxifen and/or MBCD treatment although this was not significant ($P > 0.05$) (Fig. 6A). However both tamoxifen and MBCD significantly reduced the time to half-maximal swelling consistent with an increased rate of swelling (Fig. 6B). Tamoxifen treatment of cells in which caveolae were disrupted had no significant effect ($P > 0.05$) on time to half-maximal swelling. Thus inhibition of $I_{Cl,swell}$ and disruption of caveolae have identical (non-additive) effects; both attenuate volume regulation in the cardiac cell.

Effect of Caveolar Disruption on Shortening Response to Swelling

$I_{Cl,swell}$ depolarises resting membrane potential and decreases action potential duration [7]. We have previously shown that 10 min exposure to hypotonic solution abbreviates the action potential duration in the rat ventricular myocyte, an effect sensitive to 4,4'-diisothiocyanostilbene-2,2'-disulphonic acid (DIDS), confirming a contribution from $I_{Cl,swell}$ [29]. The negative inotropic response observed after swelling has been ascribed in part to this $I_{Cl,swell}$ -induced action potential abbreviation [29,30]. We used the swelling-induced change in contractility as an index of $I_{Cl,swell}$ to test how disrupting caveolae affects $I_{Cl,swell}$ activation. As Tmf also blocks L type Ca^{2+} current [31], and because we observed a 70% reduction in contractility with 10 μM Tmf (data not shown), we used DIDS to inhibit $I_{Cl,swell}$ in experiments involving measurement of cell contractility. In isotonic conditions, DIDS (50 μM) has no effect on action potential configuration [29] or basal cell contractility (present study; data not shown), confirming that it has no significant effect on currents flowing during the normal action potential in the absence of swelling. Figure 7 shows the effect of inhibiting $I_{Cl,swell}$ and disrupting

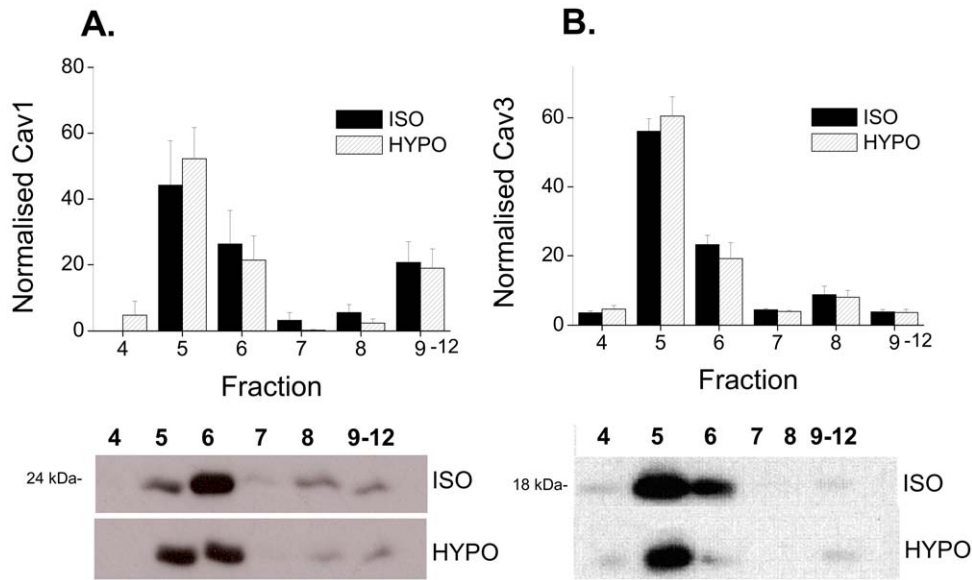


Figure 4. Hyposmotic swelling does not cause translocation of Cav 1 or Cav 3 from caveolar membrane fractions. Ventricular myocytes were exposed to isotonic or hypotonic solutions for 15 min, then subject to Na_2CO_3 extraction and discontinuous sucrose density gradient fractionation. A. Mean data showing Cav 1 in each fraction normalised to the sum of Cav 1 in all fractions for each sample ($n=6$ hearts). Representative immunoblots, with equal volume loading of fractions, is shown below. B. Mean data showing Cav 3 in each fraction with representative immunoblots below. In both isotonic and hypotonic conditions, Cav 1 and 3 were enriched in the buoyant lipid raft fractions (5,6) of the myocyte. Hyposmotic swelling had no effect on the location of either Cav isoform. doi:10.1371/journal.pone.0008312.g004

caveolae on the negative inotropic effect of swelling. $I_{\text{Cl,swell}}$ inhibition with DIDS reversed the negative inotropic response to swelling, consistent with a role for $I_{\text{Cl,swell}}$ in this. Although MBCD mimicked the effect of $I_{\text{Cl,swell}}$ inhibition on the volume response to swelling (Fig. 6), in cells in which caveolae were disrupted with MBCD we saw a significant *potentiation* ($P<0.05$) of the negative inotropic response to swelling at 6 and 10 min after exposure to hypotonic solution relative to controls. This suggests that disrupting caveolae increases activation of $I_{\text{Cl,swell}}$.

Discussion

In this study we have looked at the effect of hypotonic swelling on the morphology and Cav content of caveolae, and the impact of caveolar disruption on processes that depend on $I_{\text{Cl,swell}}$ activation in the cardiac myocyte. We have shown that swelling has marked effects on the configuration of caveolae without affecting Cav localisation. Disrupting caveolae has significant effects on volume regulation and contractility in response to swelling, two processes which involve $I_{\text{Cl,swell}}$ activation. Our data are consistent with the idea that disrupting caveolae removes essential membrane reserves so that cells swell more quickly, thereby potentiating activation of the mechanosensitive $I_{\text{Cl,swell}}$ channel. A simple model summarising our findings is shown in Figure 8.

Using electron microscopy we have quantified for the first time the effect of hypotonic swelling on the morphology and number of caveolae in the isolated cardiac myocyte. We see a 50% reduction in the number of caveolae (identified on the basis of size and shape) after 15 min exposure to hypotonic solution. This change in caveolae number reflects a decrease in the number of closed caveolae for which we cannot visualise a neck which connects with the sarcolemma. No change in the number of open caveolae was recorded. In agreement, Kohl *et al.* [21] have reported an absence of closed caveolae in rabbit myocardium after 30 min swelling with 0.75T solution.

In past decades there has been discussion as to whether closed subplasmalemmal vesicles of a size consistent with caveolae are truly closed caveolae, or whether they in fact represent a population of caveolae sectioned outside the connecting neck region. Early EM studies showed that in smooth, skeletal and cardiac muscle extracellular markers penetrate virtually all subplasmalemmal vesicles of a size consistent with caveolae, suggesting that they are relatively static structures open to the extracellular space [32,33]. However, Gabella [22] reported nearly twice as many caveolae with transmission EM than with freeze fracture EM (which recognises only caveolae with connecting necks), suggesting that around half of caveolae are in the closed configuration. Moreover, increases in the number and diameter of connecting necks visible in freeze-fracture EM in response to increases in osmolarity have been reported in the atria [34], consistent with the idea that caveolar necks may be reversibly inserted into, and withdrawn from, the sarcolemma in response to changes in osmolarity. In the present study, on the basis of the neck:bulb diameter recorded in open caveolae (around 1:2), a significant proportion of caveolae recorded in the closed state in control cells (85% of the total) should represent true closed vesicles. This is in accord with our observation that these closed caveolae are more distant from the sarcolemma than their open counterparts (see Fig. 2A).

We propose that the effect of swelling on reducing closed caveolae without affecting the open configuration underlies a cycle whereby stretch causes flattening of open caveolae in tandem with sarcolemmal incorporation of closed caveolae (see Figure 8). Kohl and co-workers [21] have previously reported evidence of stretch-incorporation of closed caveolae in the adult myocardium. The idea of increased membrane tension acting as a feedback mechanism for vesicle recruitment is well established [18,35,36].

Despite effects of swelling on the morphology of caveolae, we saw no translocation of Cav 1 or 3 from the caveolar fraction of the myocytes (see Figure 8). Whilst some have reported stretch-

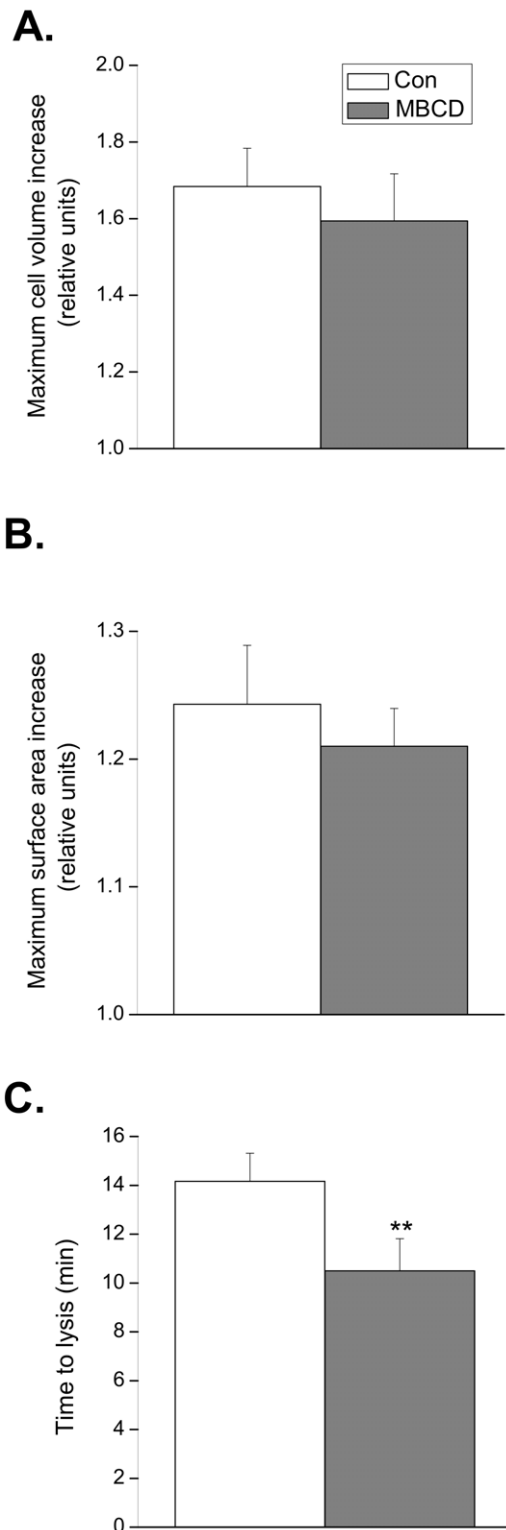


Figure 5. Effect of caveolar disruption on maximum cell volume, surface area and time to lysis in 5 mOsM solution. Quiescent ventricular myocytes were exposed to a 0.02T hypotonic solution and the maximum cell volume and surface area achieved before lysis was estimated from a video image of the cell. Disruption of caveolae with MBCD did not significantly alter the maximum cell volume (A.) or surface area (B.) prior to lysis. C. The time to lysis was significantly reduced in cells treated with MBCD (** $P < 0.01$ versus control; Student's t-test; $n = 11$ cells). doi:10.1371/journal.pone.0008312.g005

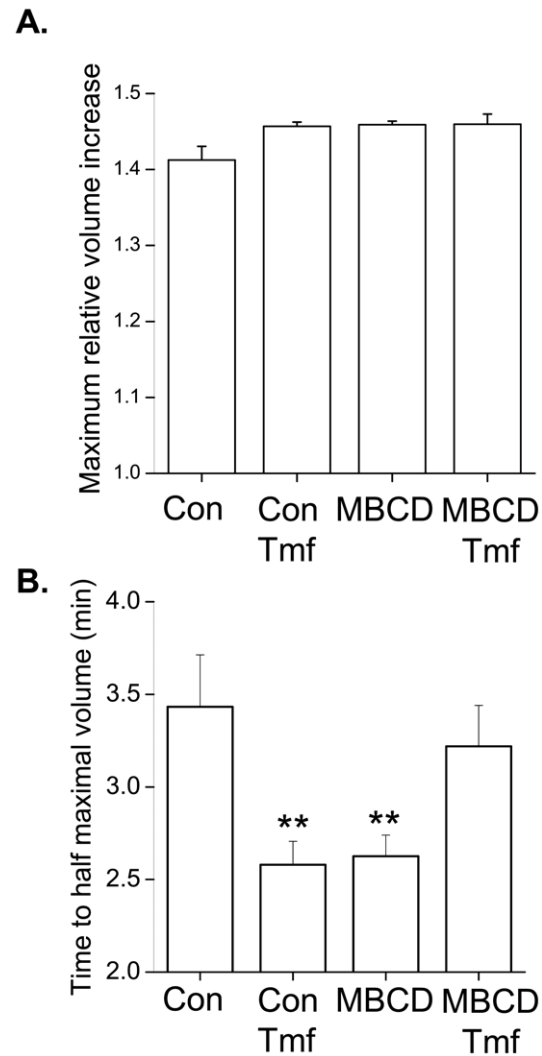


Figure 6. Comparison of the effect of caveolar disruption and $I_{C1,swell}$ inhibition on myocyte volume regulation. Values for maximum volume increase (A.) and time to half-maximum volume (B.) were obtained by fitting a sigmoidal relationship to the time-course of cell volume changes during 9 min exposure to 0.64T solution (see Figure 1). Inhibition of $I_{C1,swell}$ with 10 μ M tamoxifen (Tmf) and/or disruption of caveolae with MBCD had no significant effect on the maximum volume achieved during swelling. By contrast, Tmf and MBCD both significantly reduced the time to half-maximal swelling, although the effects were not additive (** $P < 0.01$ vs. control group (Con); ANOVA; $n = 16-19$ cells). doi:10.1371/journal.pone.0008312.g006

induced translocation of Cav 1 and 3 (in vascular smooth muscle) [25], this is not a universal mechanism. For example, although the small G proteins Rac and RhoA translocate from caveolae in axially stretch neonatal cardiac myocytes, Cav 3 was shown to remain in caveolae [37].

In the ventricular myocyte, the maximum volume and surface area increase recorded prior to lysis (68 and 24%) are much less than that reported for epithelial cells or fibroblasts (>1000 and 360%) [19], suggesting that the ventricular myocyte has less membrane reserves than these cell types. Groulx *et al.* [19] recently addressed the source of membrane reserves during modest and extreme swelling in cultured cell lines by measuring surface area and volume changes with or without functional exocytotic pathways. Their data suggest that, in epithelial cells and fibroblasts,

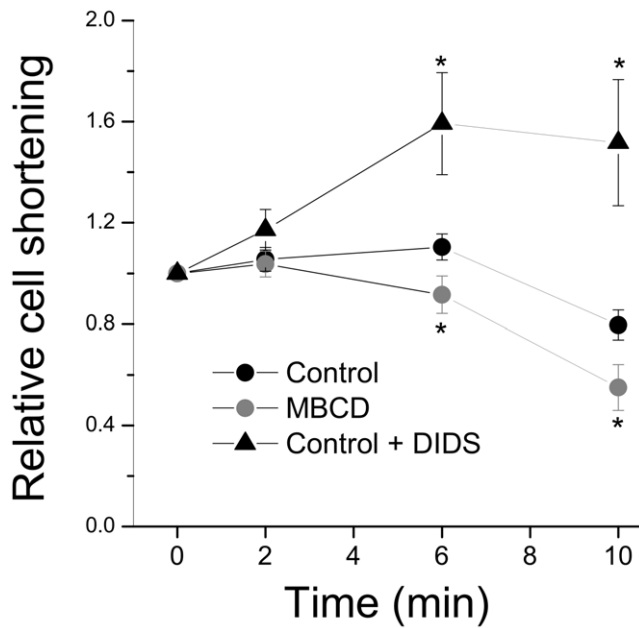


Figure 7. Effect of caveolar disruption and $I_{Cl,swell}$ inhibition on the contractile response to hyposmotic swelling. Field-stimulated myocytes were exposed to 0.64T hypotonic solution for 10 min and the change in contractility (expressed as a % of resting cell length) measured. The negative inotropic response recorded at 6 and 10 min in control cells was enhanced in cells in which caveolae were disrupted with MBCD, and reversed in cells in which $I_{Cl,swell}$ was inhibited with 50 μ M DIDS. * $P < 0.05$ vs time-paired control (ANOVA; $n = 19-21$ cells).

doi:10.1371/journal.pone.0008312.g007

the majority of membrane reserves required during modest swelling (<100% increase in cell volume) come from excess surface membrane rather than intracellular membrane stores (vesicles). In the present study, electron microscopy data suggest that, during exposure of the ventricular myocyte to 0.64T hypotonic solution (which gives a 40% increase in cell volume), membrane reserves come from both surface sarcolemma (open caveolae) and intracellular membrane (closed caveolae). We estimate that, in our myocytes, the extra surface area available from both open and closed caveolae is around 12%. This is less than the calculated increase in surface area during modest swelling (16%) and prior to lysis (24%), suggesting that other membrane reserves (e.g. Z-line folds, see [21]), are involved).

$I_{Cl,swell}$ contributes to volume regulation in the cardiac myocyte. Here we have confirmed this by showing that the rate of swelling (indexed by time to half-maximal volume) in response to 0.64T solution is increased when $I_{Cl,swell}$ is inhibited with tamoxifen. Disrupting caveolae with MBCD had an identical effect on the rate of swelling. We know that MBCD causes a translocation of Cav 3 from caveolae and a reduction in the number of identifiable caveolae [23,24]. Therefore one interpretation of these data is that disrupting caveolae inhibits $I_{Cl,swell}$, in other words, $I_{Cl,swell}$ activation relies on caveolae (or the presence of Cav 3). This is in accord with work from Trouet *et al.* [11,12] which suggests that caveolae act as a compartment to bring together the $I_{Cl,swell}$ channel with elements necessary for its activation.

If $I_{Cl,swell}$ activation relies on caveolae/Cav 3, then the negative inotropic response observed several minutes after swelling, which has been ascribed to action potential abbreviation secondary to $I_{Cl,swell}$ activation [29], should be attenuated when caveolae are

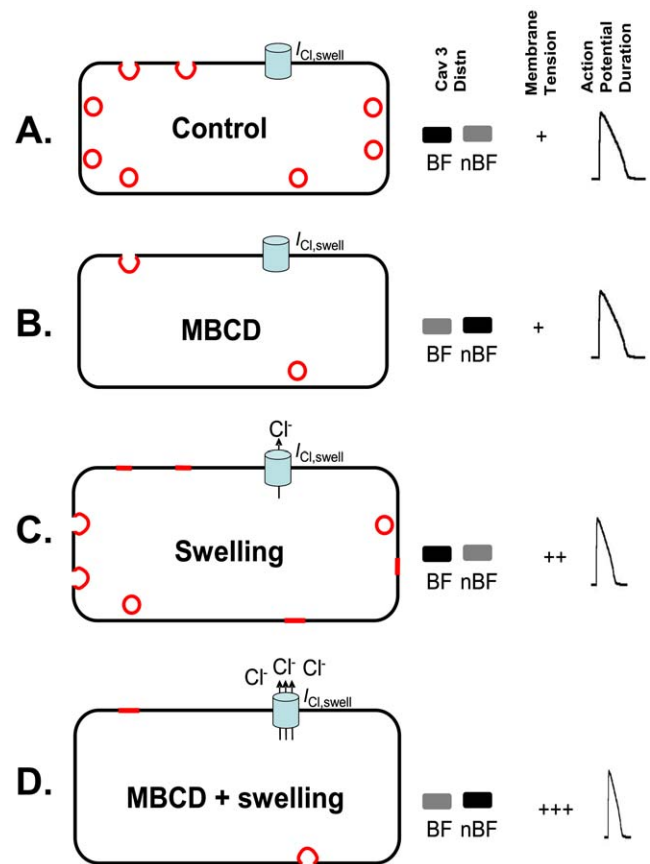


Figure 8. A simple model summarising the effect of cholesterol depletion and/or swelling on caveolae configuration, Cav 3 distribution, membrane tension and consequences for $I_{Cl,swell}$ activation. A. Under control conditions, caveolae exist in open and closed configurations, Cav 3 is found predominantly in buoyant caveolae-containing membrane fractions (BF; fractions 5,6 of the sucrose gradient, see Fig. 4), and the $I_{Cl,swell}$ channel is inactive. B. MBCD reduces the number of open and closed caveolae in association with translocation of Cav 3 from the BF to non-buoyant fractions (nBF; fractions 7-12), which contain heavy membranes and cytosolic proteins. The $I_{Cl,swell}$ channel remains inactive. C. By contrast, swelling reduces the number of caveolae in the closed configuration only. We propose that this is through flattening of open caveolae in tandem with sarcolemmal incorporation of closed caveolae. No Cav 3 translocation from BF to nBF is seen during swelling. Membrane tension increases with swelling and this activates $I_{Cl,swell}$ which abbreviates the action potential. D. In MBCD-treated cells, lack of available membrane reserves (open and closed caveolae) means that swelling increases membrane tension more than in control cells, causing enhanced $I_{Cl,swell}$ activation, action potential shortening and negative inotropy. Cav 3-containing cholesterol-enriched membranes are shown in red: open caveolae (sarcolemmal red crescents); closed caveolae (intracellular red circles); flattened caveolae (sarcolemmal red lines). A representation of relative Cav 3 band density in BF and nBF, an index of membrane tension, and a representative action potential under each condition is shown to the right.

doi:10.1371/journal.pone.0008312.g008

disrupted with MBCD. In contrast to this prediction, we saw that the negative inotropic response after 6 and 10 min of swelling was *enhanced* in cells treated with MBCD. These data are not consistent with the hypothesis that $I_{Cl,swell}$ relies on caveolae/Cav 3, but suggest instead that disrupting caveolae promotes activation of $I_{Cl,swell}$ by reducing the membrane reserves of the cardiac myocyte.

In this study we have shown, using EM and cell lysis, that disrupting caveolae removes essential membrane reserves. This means that cells in which caveolae are disrupted swell more quickly during exposure to 0.64T hypotonic solution. This effect can be mimicked by inhibiting $I_{Cl,swell}$ which normally limits swelling during hypotonic challenge. Because $I_{Cl,swell}$ is activated more readily when there are less caveolae, we see a potentiation of the shortening response to swelling which reflects $I_{Cl,swell}$ -induced action potential abbreviation (see Fig. 8). Therefore, the present study presents a different mechanism for the role of caveolae in $I_{Cl,swell}$ activation to that proposed by others in Cav 1-expressing cultured cells [11,12]. We show that it is caveolae's role as a membrane reserve that is important in cell volume regulation in the adult cardiac myocyte.

The use of MBCD as an approach to selectively disrupt caveolae can have limitations because it also targets non-caveolar rafts (which are dependent on cholesterol). Furthermore, because MBCD affects both caveolar structure and Cav content (Fig. 3; [23]), MBCD does not distinguish between caveolae-dependent and Cav-dependent processes. However, the strength of the present study is that data cannot be explained by an effect of non-caveolar rafts or Cav on $I_{Cl,swell}$ activity. If non-caveolar rafts or Cav keep $I_{Cl,swell}$ inactive, then MBCD-treated cells would swell more slowly, which is opposite to the effect that we saw (Fig. 6). If non-caveolar rafts or Cav promote $I_{Cl,swell}$ activation, then MBCD treated cells would swell more quickly (as we report) but the negative inotropic effect of swelling (which is proportional to $I_{Cl,swell}$ activation) would be less (whereas we show that it is more; Fig. 7). So our data clearly show that it is the role of caveolae as a membrane reserve that predominates over all others in regulation of $I_{Cl,swell}$ in the adult cardiac myocyte. We do not discount the possibility that the major role of caveolae as a membrane reserve may obscure more minor effects of non-caveolar rafts or Cav on $I_{Cl,swell}$ in these cells.

This work is the first to show evidence for a role of caveolae in $I_{Cl,swell}$ activation in the cardiac cell, and highlights a general mechanism by which caveolae could modulate mechanosensitive channel activation.

Materials and Methods

Ethics Statement

All animal experimentation was carried out in accordance with the Animals (Scientific Procedures) Act 1986 and conforms to the Recommendation from the Declaration of Helsinki and the Guiding Principles in the Care and Use of Animals. Animals were humanely killed by schedule 1 methods.

Myocyte Isolation

Myocytes were isolated enzymatically from the hearts of male Wistar rats (250–280 g) according to the method described by Calaghan *et al.* [38]. Myocytes were treated with the cholesterol-depleting agent methyl- β -cyclodextrin (MBCD, 2 mM) for 37°C for 1 h to disrupt caveolae.

Electron Microscopy

After treatment with isotonic or hypotonic solution for 15 min, a pellet of cells was formed by rapid centrifugation of the cell suspension at 80 g. Cell pellets were fixed overnight in 2.5% glutaraldehyde in isotonic or hypotonic solution as appropriate, post-fixed with 1% osmium tetroxide in 100 mM cacodylate buffer and dehydrated through an ethanol series. Cells were embedded in

araldite and ultra thin sections (~100 nm) were stained with 20% uranyl acetate (30 min) and Reynolds lead citrate (30 min) in the presence of 1 M NaOH. Sections were observed using a JEOL 1200 transmission electron microscope.

Caveolae were defined as flask-shaped invaginations ('open' caveolae) or subsarcolemmal vesicles ('closed' caveolae) with a size between \approx 50 and 100 nm in diameter.

Sucrose Density Fractionation

Preparations were fractionated using detergent-free methods as we have described previously [23]. Peripheral membrane proteins were extracted in 500 mM Na_2CO_3 (pH 11.0) containing 0.5 mM EDTA and 1% protease inhibitor cocktail (Sigma). Samples were homogenised (Ultra-Turrax T8; Ika), then sonicated (Vibra Cell; Sonics) 3 times each for 20 s at full power. Approximately 2 ml of homogenate was mixed with an equal volume of 90% sucrose in MES-buffered saline (25 mM MES, 150 mM NaCl, 2 mM EDTA, pH 6.5) to form a 45% sucrose solution. A discontinuous sucrose gradient was created by layering on to this a further 4 ml each of 35% and 5% sucrose solution (MES-buffered saline with 250 mM Na_2CO_3). Gradients were centrifuged for 17 h at 280,000 g (Beckman SW40Ti rotor) at 4°C. A total of 12 fractions (each 1 ml) were collected following fractionation. Cav 1 and Cav 3 were measured by Western blotting (antibodies 610406 and 610420 respectively; BD Biosciences) following SDS-PAGE [38]. Equal volumes of fractions were loaded onto the gel and the band density normalised to the sum of the band density in all fractions.

Measurement of Cell Volume and Contraction

Isolated myocytes were placed in an experimental chamber on the stage of an inverted microscope and continually perfused with a HEPES-based solution (isotonic or hypotonic, see *Solutions*) at 22–24°C. For measurement of cell volume, cells were quiescent; for assessment of shortening they were field-stimulated at 0.5 Hz and cell length was monitored using an edge-detection system (Crescent Electronics). Cell volume was calculated from a video image of the cell using the relationship $V = (\Pi wdL)/4$ (where V is volume, w is width, d is depth and L is length, assuming the cell is an elliptical cylinder with the ratio of width to depth of 3:1) [39]. Apparent surface area (which does not take into account any indentation/folds in the surface membrane) was estimated from $SA = 2\Pi L \sqrt{((w/2)^2 + (d/6)^2)}$.

Solutions

Isotonic physiological HEPES-based solution (Iso) contained (mM): NaCl, 57; HEPES, 5; Na_2HPO_4 , 1; $\text{MgSO}_4 \cdot 7\text{H}_2\text{O}$, 1, KCl, 5; sucrose, 113; glucose, 5.5; CaCl_2 , 1, pH 7.4 (280 ± 10 mosM). Hypotonic solution (Hypo) had the same composition and pH as the isotonic standard physiological solution except that 113 mM of sucrose was omitted (180 ± 10 mosM; 0.64T). Cells were exposed to hypotonic solution for 10–15 min. For lysis experiments, hypotonic solution contained (mM): CaCl_2 , 1; MgCl_2 , 1. The pH was adjusted to 7.4 (5 ± 2 mosM; 0.02T).

For experiments to determine the effect of MBCD on caveolar morphology (Fig. 3), control physiological HEPES-based solution (Con) had the same composition as Iso but sucrose was omitted and [NaCl] was 137 mM.

Author Contributions

Conceived and designed the experiments: EW SC. Performed the experiments: LK. Analyzed the data: LK. Wrote the paper: SC.

References

- Monier S, Parton RG, Vogel F, Behlke J, Henske A, et al. (1995) VIP21-caveolin, a membrane protein constituent of the caveolar coat, oligomerizes in vivo and in vitro. *Mol Biol Cell* 6: 911–927.
- Li S, Galbati F, Volonte D, Sargiacomo M, Engelman JA, et al. (1998) Mutational analysis of caveolin-induced vesicle formation. Expression of caveolin-1 recruits caveolin-2 to caveolae membranes. *FEBS Lett* 434: 127–134.
- Sens P, Turner MS (2007) The forces that shape caveolae. In: Fielding CJ, ed. *Lipid Rafts and Caveolae*. Weinheim: WILEY-VCH Verlag GmbH & Co. KGaA. pp 25–44.
- Sargiacomo M, Scherer PE, Tang Z, Kubler E, Song KS, et al. (1995) Oligomeric structure of caveolin: implications for caveolae membrane organization. *Proc Natl Acad Sci U S A* 92: 9407–9411.
- Li S, Okamoto T, Chun M, Sargiacomo M, Casanova JE, et al. (1995) Evidence for a regulated interaction between heterotrimeric G proteins and caveolin. *J Biol Chem* 270: 15693–15701.
- Dulhunty AF, Franzini-Armstrong C (1975) The relative contributions of the folds and caveolae to the surface membrane of frog skeletal muscle fibres at different sarcomere lengths. *J Physiol* 250: 513–539.
- Vandenberg JL, Bett GC, Powell T (1997) Contribution of a swelling-activated chloride current to changes in the cardiac action potential. *Am J Physiol* 273: C541–C547.
- Baumgarten CM, Clemons HF (2003) Swelling-activated chloride channels in cardiac physiology and pathophysiology. *Prog Biophys Mol Biol* 82: 25–42.
- Tseng GN (1992) Cell swelling increases membrane conductance of canine cardiac cells: evidence for a volume-sensitive Cl channel. *Am J Physiol* 262: C1056–C1068.
- Browe DM, Baumgarten CM (2003) Stretch of beta 1 integrin activates an outwardly rectifying chloride current via FAK and Src in rabbit ventricular myocytes. *J Gen Physiol* 122: 689–702.
- Trouet D, Nilius B, Jacobs A, Remacle C, Droogmans G, et al. (1999) Caveolin-1 modulates the activity of the volume-regulated chloride channel. *J Physiol* 520 Pt 1: 113–9: 113–119.
- Trouet D, Hermans D, Droogmans G, Nilius B, Eggermont J (2001) Inhibition of volume-regulated anion channels by dominant-negative caveolin-1. *Biochem Biophys Res Commun* 284: 461–465.
- Okada Y (1999) A scaffolding for regulation of volume-sensitive Cl⁻ channels. *J Physiol* 520 Pt 1: 2: 2.
- Li S, Couet J, Lisanti MP (1996) Src tyrosine kinases, Galpha subunits, and H-Ras share a common membrane-anchored scaffolding protein, caveolin. Caveolin binding negatively regulates the auto-activation of Src tyrosine kinases. *J Biol Chem* 271: 29182–29190.
- Ren Z, Baumgarten CM (2005) Antagonistic regulation of swelling-activated Cl⁻ current in rabbit ventricle by Src and EGFR protein tyrosine kinases. *Am J Physiol Heart Circ Physiol* 288: H2628–H2636.
- Walsh KB, Zhang J (2005) Regulation of cardiac volume-sensitive chloride channel by focal adhesion kinase and Src kinase. *Am J Physiol Heart Circ Physiol* 289: H2566–H2574.
- Resh MD (1994) Myristylation and palmitoylation of Src family members: the fate of the matter. *Cell* 76: 411–413.
- Hamill OP, Martinac B (2001) Molecular basis of mechanotransduction in living cells. *Physiol Rev* 81: 685–740.
- Groulx N, Boudreault F, Orlov SN, Grygorczyk R (2006) Membrane reserves and hypotonic cell swelling. *J Membr Biol* 214: 43–56.
- Page E (1978) Quantitative ultrastructural analysis in cardiac membrane physiology. *Am J Physiol* 235: C147–C158.
- Kohl P, Cooper PJ, Holloway H (2003) Effects of acute ventricular volume manipulation on in situ cardiomyocyte cell membrane configuration. *Prog Biophys Mol Biol* 82: 221–227.
- Gabella G (1978) Inpocketings of the cell membrane (caveolae) in the rat myocardium. *J Ultrastruct Res* 65: 135–147.
- Calaghan S, Kozera L, White E (2008) Compartmentalisation of cAMP-dependent signalling by caveolae in the adult cardiac myocyte. *J Mol Cell Cardiol* 45: 88–92.
- Patel HH, Head BP, Petersen HN, Niesman IR, Huang D, et al. (2006) Protection of adult rat cardiac myocytes from ischemic cell death: role of caveolar microdomains and {delta}-opioid receptors. *Am J Physiol Heart Circ Physiol* 291: H344–H350.
- Kawabe J, Okumura S, Lee MC, Sadoshima J, Ishikawa Y (2004) Translocation of caveolin regulates stretch-induced ERK activity in vascular smooth muscle cells. *Am J Physiol Heart Circ Physiol* 286: H1845–H1852.
- Patel HH, Tsutsumi YM, Head BP, Niesman IR, Jennings M, et al. (2007) Mechanisms of cardiac protection from ischemia/reperfusion injury: a role for caveolae and caveolin-1. *FASEB J* 21: 1565–1574.
- Head BP, Patel HH, Roth DM, Murray F, Swaney JS, et al. (2006) Microtubules and actin microfilaments regulate lipid raft/caveolae localization of adenylyl cyclase signaling components. *J Biol Chem* 281: 26391–26399.
- Vandenberg JL, Yoshida A, Kirk K, Powell T (1994) Swelling-activated and isoprenaline-activated chloride currents in guinea pig cardiac myocytes have distinct electrophysiology and pharmacology. *J Gen Physiol* 104: 997–1017.
- Brette F, Calaghan SC, Lappin S, White E, Colyer J, et al. (2000) Biphasic effects of hyposmotic challenge on excitation-contraction coupling in rat ventricular myocytes. *Am J Physiol Heart Circ Physiol* 279: H1963–H1971.
- Li GR, Zhang M, Satin LS, Baumgarten CM (2002) Biphasic effects of cell volume on excitation-contraction coupling in rabbit ventricular myocytes. *Am J Physiol Heart Circ Physiol* 282: H1270–H1277.
- Dick GM, Kong ID, Sanders KM (1999) Effects of anion channel antagonists in canine colonic myocytes: comparative pharmacology of Cl⁻, Ca²⁺ and K⁺ currents. *Br J Pharmacol* 127: 1819–1831.
- Martinez-Palomo A, Benitez D, Alanis J (1973) Selective deposition of lanthanum in mammalian cardiac cell membranes. Ultrastructural and electrophysiological evidence. *J Cell Biol* 58: 1–10.
- Severs NJ (1988) Caveolae: static in-pocketings of the plasma membrane, dynamic vesicles or plain artifact? *J Cell Sci* 90 (Pt 3): 341–348.
- Kordylewski L, Goings GE, Page E (1993) Rat atrial myocyte plasmalemmal caveolae in situ. Reversible experimental increases in caveolar size and in surface density of caveolar necks. *Circ Res* 73: 135–146.
- Lewis SA, de Moura JL (1984) Apical membrane area of rabbit urinary bladder increases by fusion of intracellular vesicles: an electrophysiological study. *J Membr Biol* 82: 123–136.
- Lewis SA, de Moura JL (1982) Incorporation of cytoplasmic vesicles into apical membrane of mammalian urinary bladder epithelium. *Nature* 297: 685–688.
- Kawamura S, Miyamoto S, Brown JH (2003) Initiation and transduction of stretch-induced RhoA and Rac1 activation through caveolae: cytoskeletal regulation of ERK translocation. *J Biol Chem* 278: 31111–31117.
- Calaghan SC, White E, Colyer J (1998) Co-ordinated changes in cAMP, phosphorylated phospholamban, Ca²⁺ and contraction following beta-adrenergic stimulation of rat heart. *Plügers Arch* 436: 948–956.
- Boyett MR, Frampton JE, Kirby MS (1991) The length, width and volume of isolated rat and ferret ventricular myocytes during twitch contractions and changes in osmotic strength. *Exp Physiol* 76: 259–270.