

RESEARCH

Open Access



Association of accelerated long-term forgetting and senescence-related blood-borne factors in asymptomatic individuals from families with autosomal dominant Alzheimer's disease

Jianwei Yang¹, Chaojun Kong¹, Longfei Jia^{1,2,3,4*}, Tingting Li^{1,2,3,4}, Meina Quan^{1,2,3,4}, Yan Li¹, Diyang Lyu¹, Fangyu Li^{1,2,3,4}, Hongmei Jin^{1,2,3,4}, Ying Li^{1,2,3,4}, Qigeng Wang^{1,2,3,4} and Jianping Jia^{1,2,3,4*} 

Abstract

Background: Accelerated long-term forgetting has been identified in preclinical Alzheimer's disease (AD) and is attributed to a selective impairment of memory consolidation in which the hippocampus plays a key role. As blood may contain multiple senescence-related factors that involved in neurogenesis and synaptic plasticity in the hippocampus, we tested whether there is an association between blood-borne factors and accelerated long-term forgetting in asymptomatic individuals from families with autosomal dominant AD (ADAD).

Methods: We analyzed data of 39 asymptomatic participants ($n = 18$ ADAD mutation carriers, $n = 21$ non-carriers) from the Chinese Familial Alzheimer's Disease Network (CFAN) study. Long-term forgetting rates were calculated based on recall or recognition of two materials (word list and complex figure) at three delays comprising immediate, 30 min, and 7 days. Peripheral blood concentrations of candidate pro-aging factors (CC chemokine ligand 11 [CCL11] and monocyte chemoattractant protein 1 [MCP1]) and rejuvenation factors (growth differentiation factor 11 [GDF11], thrombospondin-4 [THBS4], and secreted protein acidic and rich in cysteine like 1 [SPARCL1]) were evaluated in all participants.

Results: Despite normal performance on standard 30-min delayed testing, mutation carriers exhibited accelerated forgetting of verbal and visual material over 7 days in comparison with matched non-carriers. In the whole sample, lower plasma THBS4 was associated with accelerated long-term forgetting in list recall ($\beta = -0.46$, $p = 0.002$), figure recall ($\beta = -0.44$, $p = 0.004$), and list recognition ($\beta = -0.37$, $p = 0.010$). Additionally, higher plasma GDF11 and CCL11 were both associated with accelerated long-term forgetting (GDF11 versus figure recall: $\beta = 0.39$, $p = 0.007$; CCL11 versus list recognition: $\beta = 0.44$, $p = 0.002$).

* Correspondence: longfei@mail.ccmu.edu.cn; jiajp@vip.126.com

¹Innovation Center for Neurological Disorders and Department of Neurology, Xuanwu Hospital, Capital Medical University, National Clinical Research Center for Geriatric Diseases, 45 Changchun St, Beijing, China
Full list of author information is available at the end of the article



© The Author(s). 2021 **Open Access** This article is licensed under a Creative Commons Attribution 4.0 International License, which permits use, sharing, adaptation, distribution and reproduction in any medium or format, as long as you give appropriate credit to the original author(s) and the source, provide a link to the Creative Commons licence, and indicate if changes were made. The images or other third party material in this article are included in the article's Creative Commons licence, unless indicated otherwise in a credit line to the material. If material is not included in the article's Creative Commons licence and your intended use is not permitted by statutory regulation or exceeds the permitted use, you will need to obtain permission directly from the copyright holder. To view a copy of this licence, visit <http://creativecommons.org/licenses/by/4.0/>. The Creative Commons Public Domain Dedication waiver (<http://creativecommons.org/publicdomain/zero/1.0/>) applies to the data made available in this article, unless otherwise stated in a credit line to the data.

Conclusions: Accelerated long-term forgetting is a cognitive feature of presymptomatic AD. Senescence-related blood-borne factors, especially THBS4, GDF11, and CCL11, may be promising biomarkers for the prediction of accelerated long-term forgetting.

Keywords: Alzheimer's disease, Accelerated long-term forgetting, Blood-borne factors, Senescence, Biomarkers

Background

Alzheimer's disease (AD) is a clear and present concern to public health in China and internationally and has a profound socio-economic impact [1]. Early identification of AD has become a priority in research, as it may open the door to preventive approaches [2]. The fact that AD pathological changes develop decades before visible cognitive impairments might reflect that the sensitivities of the cognitive assays currently used are not sufficient enough [3, 4]. In this context, increasing evidence has suggested that accelerated long-term forgetting would be a subtle cognitive impairment in presymptomatic autosomal dominant AD (ADAD) mutation carriers [5, 6]. This memory impairment was thought to be attributed to a failure of memory consolidation process, which was primarily governed by the medial temporal lobe (MTL), especially the hippocampus [7].

A flurry of studies has demonstrated that specific factors are present in the blood that directly affect neurogenesis and synaptic plasticity in the hippocampus and thus regulate memory and cognitive function [8–12]. For example, initial studies in mouse models have identified pro-aging factors (monocyte chemoattractant protein 1 [MCP1] and CC chemokine ligand 11 [CCL11]) [8] and rejuvenating factor (growth differentiation factor 11 [GDF11]) [9] that correlated with hippocampal neurogenesis and cognitive function. More recently, both thrombospondin-4 (THBS4) and secreted protein acidic and rich in cysteine like 1 (SPARCL1) were found to represent rejuvenation factors that enhance synaptic connectivity [10]. These results provide support for the idea that senescence-related blood-borne factors would be served as sensitive predictors of cognitive function (specifically hippocampal memory). However, few studies have examined these senescence-related blood-borne factors with respect to subtle cognitive change, especially hippocampal-dependent memory impairments, in the preclinical stage of AD.

The goal of this study was to explore whether blood-borne factors were associated with long-term forgetting rates in asymptomatic carriers and non-carriers of ADAD mutations. We expected to find that higher pro-aging factors or lower rejuvenation factors that regulate hippocampal neurogenesis and synaptic plasticity would be associated with accelerated long-term forgetting in the early stage of AD.

Methods

Participants

All participants in this study were recruited from the Chinese Familial Alzheimer's Disease Network (CFAN), which is a multicenter, longitudinal cohort used to collect the hereditary and clinical profile of familial AD [13]. Eighteen participants were mutation carriers with a known causative mutation of AD, including 11 carrying *presenilin 1* (*PSEN1*) mutation, 4 carrying *amyloid precursor protein* (*APP*) mutation, and 3 carrying *presenilin 2* (*PSEN2*) mutation. Twenty-one were non-carrier family members. The estimated proximity to onset for mutation carriers of ADAD was calculated as the age of the participant at assessment minus the age of the parent at symptom onset [14]. All participants were blind to their genetic status, in accordance with cultural norms and ethical regulations in this community. Inclusion criteria were Clinical Dementia Rating (CDR) global score = 0 and Mini-Mental State Examination (MMSE) score ≥ 26 . None of the participants reported complaints of anxiety or depressive symptoms. This study was approved by the Medical Research Ethics Committee of Xuanwu Hospital, Capital Medical University. All participants in the study provided written informed consent.

Standard neuropsychological testing

Clinical disease severity was rated using the CDR scale, which incorporates information from both participant and informant on day-to-day cognition [15]. The MMSE [16] and Montreal Cognitive Assessment (MoCA) [17] were used to evaluate global cognitive function. Self-report of subject cognitive concerns was measured with the participant (MyCog) version of the Subjective Cognitive Decline Questionnaire (SCD-Q), which quantifies perceived subjective cognitive decline over the last 2 years [18]. Subscores for memory (items 1–11), language (items 12–17), and executive (items 18–24) functions were also computed.

Assessment of long-term forgetting rates

The WHO-University of California Los Angeles-Auditory Verbal Learning test (WHO-UCLA-AVLT) was used to assess verbal learning, recall, and recognition performances [19]. This version of the auditory verbal learning test consists of a list of 15 non-associated words that is presented orally. During this test, participants had to learn the material to a minimum required

accuracy of 80% at free recall over a minimum of 3 and a maximum of 10 trials. The Rey-Osterrieth Complex Figure (ROCF) test was used to examine visuospatial copy and recall [20]. During this test, participants were asked to copy the figure as accurately as possible and were instructed that they would later be asked to draw it from memory. Both the figure and copy were then removed from view and participants were asked to draw the figure again from memory.

At 30 min and 7 days later, participants were once again asked to recall the word list and to draw the figure from memory in as much detail as they could remember. For the word list, a recognition test was also performed during which the 15 target words were presented among 15 distracters. There was no recognition for the visual memory test. Participants were not informed about the 7-day follow-up assessment, which was conducted over the phone. This ensures that participants would not be motivated to rehearse. The 7-day follow-up figure assessments were returned by mail. The long-term forgetting rate is defined as the percentage of information lost between 30-min and 7-day delays, as follows: $(1 - \text{performance at 7-day delay} / \text{performance at 30-min delay}) \times 100$ [21].

Blood collection and analysis

Non-fasting venous blood for plasma analyses was collected in EDTA-containing tubes, which were then centrifuged at $2000 \times g$ for 15 min at 4°C . For serum analyses, blood samples were collected in tubes without anticoagulant and centrifuged after removal of clots of blood at room temperature for a half hour. EDTA plasma and serum samples were stored in single-use aliquots at -80°C until biochemical analysis.

Plasma CCL11, MCP1, GDF11, THBS4, and serum SPARCL1 concentrations were detected using enzyme-linked immunosorbent assay (ELISA; Supplementary Table 1). All analyses were performed in duplicate, according to the manufacturer's published protocols. Final data were examined for extreme outliers, and samples with $>50 \times$ the upper interquartile range were also excluded ($n = 1$ on MCP1).

Statistical analyses

Group differences in participant characteristics were assessed using Mann–Whitney U tests for continuous and chi-square test for categorical variables. Differences in long-term memory performance were compared between groups using multivariate linear regression, adjusted for age, sex, and education. Multiple comparisons were p corrected for false discovery rate (FDR). Receiver operating characteristic (ROC) curve analysis was used to determine the ability of long-term forgetting rates to discriminate between mutation carriers and non-

carriers. Spearman's correlations were used to test associations among long-term forgetting rates, estimated proximity to onset, and subject cognitive concerns in mutation carriers. To assess the individual contribution of each blood-borne factor on the prediction of accelerated long-term forgetting, multivariate analyses were conducted using stepwise linear regression models with long-term forgetting rates as dependent variables and the blood-borne factors as independent factors. Models were adjusted for age, sex, and education. The statistical analyses were performed with IBM SPSS software. All tests were two-sided, and p values less than 0.05 were considered statistically significant.

Results

Sample characteristics

Demographic, clinical, and neuropsychological characteristics of the sample are presented in Table 1. As anticipated, mutation carriers did not differ from non-carriers in basic demographic variables, such as age, sex, and education attainment. There were no significant differences regarding the global level of cognition and subjective cognitive ratings between carriers and non-carriers. There was no difference in plasma concentrations of CCL11, MCP1, GDF11, and THBS4 between mutation carriers and non-carriers. The between-group difference of serum SPARCL1 concentration was not significant, either.

Differences between groups in long-term memory performance

Age-, sex-, and education-adjusted comparisons of long-term memory performance revealed significantly poorer retention of material at 7-day recall scores for list and figure in the mutation carriers compared to non-carriers (Table 2). Mutation carriers also did worse than non-carriers on 7-day list recognition. No significant group differences were found for the initial score and the number of learning trials. In addition, the recall and recognition score at 30 min for list, as well as the recall score at 30 min for figure, did not differ between the two groups.

Diagnostic value of long-term forgetting rates

ROC analysis for discrimination between mutation carriers and non-carriers for long-term forgetting rates revealed an AUC of 0.881 (95% CI 0.774–0.988) for list recall, 0.894 (0.783–1.000) for figure recall, and 0.790 (0.645–0.934) for list recognition (Fig. 1).

Association of blood-borne factors with long-term forgetting rates

There was a significant association between blood-borne factors and long-term forgetting rates in the whole sample, adjusted for age, sex, and education (Table 3). Lower

Table 1 Demographic, clinical, and neuropsychological characteristics of study participants

Variable	Mutation carriers (n = 18)	Non-carriers (n = 21)	p value
Demographic data			
Female, n (%)	8 (44.4)	11 (52.4)	0.751
Age, y	38.0 (35.8–43.0)	35.0 (33.0–48.0)	0.282
Estimated proximity to onset, y	11.0 (7.8–15.5)	NA	
Education, y	14.0 (11.0–15.3)	16.0 (11.5–16.5)	0.094
Cognitive level (global)			
MMSE score	29.5 (29.0–30.0)	30.0 (29.0–30.0)	0.512
MoCA score	28.0 (27.0–28.0)	27.0 (27.0–28.5)	0.606
SCD-Q MyCog			
Total score	6.0 (2.0–9.3)	2.0 (0.5–7.0)	0.272
Memory subscore	4.0 (1.8–6.0)	2.0 (0–4.5)	0.185
Language subscore	1.0 (0–2.0)	0 (0–1.0)	0.262
Executive subscore	1.0 (0–1.5)	0 (0–1.0)	0.150
Senescence-related factor			
CCL11, pg/ml	77.4 (64.1–92.4)	76.9 (51.2–90.6)	0.455
MCP1, pg/ml	179.0 (137.3–212.3)	149.4 (122.5–194.2)	0.537
GDF11, pg/ml	87.9 (52.6–118.2)	72.6 (42.4–91.2)	0.673
THBS4, ng/ml	120.7 (85.2–161.3)	159.4 (117.5–217.5)	0.530
SPARCL1, ng/ml	5.4 (3.9–7.3)	5.2 (4.1–6.8)	0.749

For continuous variables, data are shown as median (IQR), and the Mann–Whitney U test was used for group comparison; for categorical variables, the chi-square test was used for group comparison

Abbreviations: CCL11 CC chemokine ligand 11, GDF11 growth differentiation factor 11, MCP1 monocyte chemotactic protein 1, MMSE Mini-Mental State Examination, MoCA Montreal Cognitive Assessment, NA not applicable, SCD-Q Subjective Cognitive Decline Questionnaire, SPARCL1 secreted protein acidic and rich in cysteine like 1, THBS4 thrombospondin-4

Table 2 Group differences in long-term memory performance

	Mutation carriers	Non-carriers	p value	Difference in mean	95% CI
Learning					
List learning trials	4.0 (4.0–5.0)	4.0 (4.0–5.0)	0.981	–0.01	–0.71 to 0.69
List learning score	80.0 (80.0–86.7)	86.7 (80.0–86.7)	0.570	–1.38	–4.55 to 1.78
Figure learning score	72.9 (63.2–80.6)	69.4 (60.4–76.4)	0.579	4.95	–2.61 to 12.51
30-min retention					
List 30-min recall	73.3 (66.7–80.0)	73.3 (70.0–80.0)	0.681	–3.46	–9.15 to 2.25
Figure 30-min recall	69.4 (56.9–79.5)	66.7 (56.9–72.2)	0.418	3.36	–4.96 to 11.67
List 30-min recognition	90.0 (73.3–93.3)	93.3 (83.3–93.3)	0.441	–3.64	–10.57 to 3.29
7-day retention					
List 7-day recall	53.3 (40.0–60.0)	66.7 (60.0–80.0)	<0.001	–15.34	–22.23 to –8.46
Figure 7-day recall	38.9 (33.3–52.8)	58.3 (47.9–60.4)	0.002	–12.31	–19.20 to –5.42
List 7-day recognition	70.0 (53.3–80.0)	80.0 (73.3–90.0)	0.006	–11.52	–19.50 to –3.53
Long-term forgetting rate					
Forgetting rate in list recall	26.1 (18.2–34.1)	9.1 (0.0–14.1)	<0.001	17.26	11.21 to 23.32
Forgetting rate in figure recall	36.3 (28.4–48.1)	10.5 (7.1–20.4)	<0.001	22.30	14.57 to 30.03
Forgetting rate in list recognition	20.7 (14.3–28.9)	7.7 (0.0–18.3)	0.003	10.07	3.66 to 16.48

Data are shown as medians (IQR). Multivariate linear regression adjusted for age, sex, and education was used to compare the between-group scores

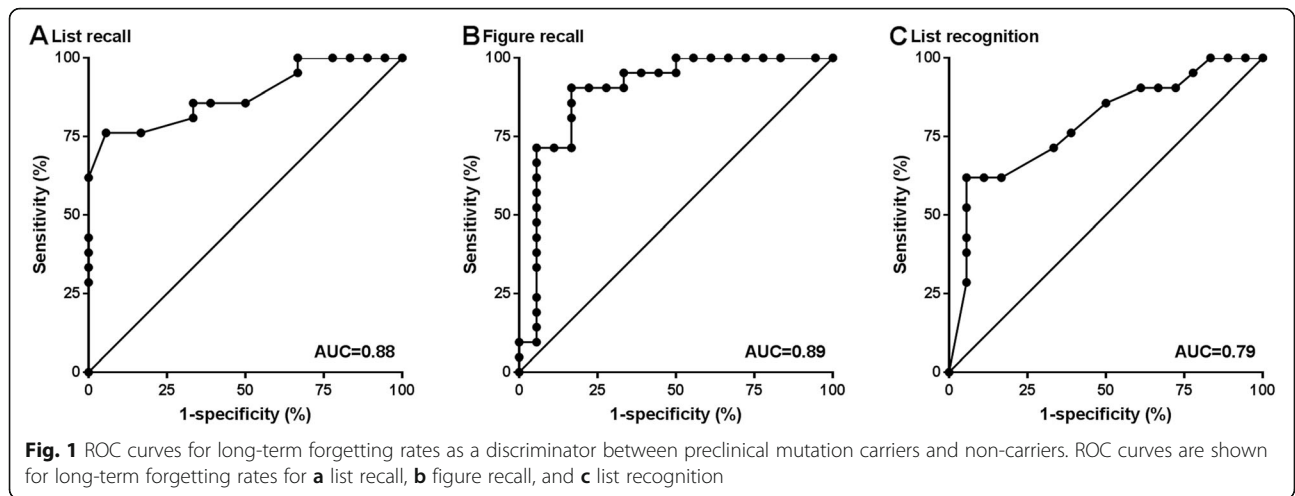


Table 3 Association of blood-borne factors with long-term forgetting rates

Dependent variables		Independent factors	B	B SE	β	p value	R ²
The whole sample							
Forgetting rate in list recall	Step 1	Age	0.84	0.24	0.51	0.001	0.24
		Age	0.97	0.23	0.59	< 0.001	0.33
	Step 3	THBS4	-0.07	0.03	-0.34	0.020	
		Age	1.14	0.22	0.69	< 0.001	0.43
		THBS4	-0.10	0.03	-0.46	0.002	
		Sex	-10.53	3.93	-0.36	0.011	
Forgetting rate in figure recall	Step 1	GDF11	0.17	0.06	0.44	0.006	0.17
		GDF11	0.15	0.05	0.38	0.011	0.28
	Step 3	THBS4	-0.08	0.03	-0.36	0.016	
		GDF11	0.15	0.05	0.39	0.007	0.34
		THBS4	-0.10	0.03	-0.44	0.004	
		Sex	-8.94	4.35	-0.29	0.048	
Forgetting rate in list recognition	Step 1	CCL11	0.20	0.06	0.46	0.003	0.19
		CCL11	0.20	0.06	0.47	0.002	0.30
	Step 3	THBS4	-0.05	0.02	-0.30	0.042	
		CCL11	0.19	0.06	0.44	0.002	0.35
		THBS4	-0.06	0.02	-0.37	0.010	
		Age	0.42	0.18	0.32	0.025	
Mutation carriers							
Forgetting rate in list recall		Age	1.16	0.33	0.67	0.003	0.41
Forgetting rate in figure recall		GDF11	0.17	0.06	0.59	0.012	0.31
Non-carriers							
Forgetting rate in list recall		MCP1	0.10	0.03	0.66	0.001	0.41
Forgetting rate in figure recall		THBS4	-0.05	0.02	-0.44	0.046	0.15
Forgetting rate in list recognition		CCL11	0.20	0.08	0.49	0.025	0.20

Results of multivariate linear regression analysis (stepwise) with the age, sex, education, and blood-borne factors as independent factors, and the long-term forgetting rates as dependent variables. Only statistically significant associations are listed (p < 0.05)

Abbreviations: CCL11 CC chemokine ligand 11, GDF11 growth differentiation factor 11, MCP1 monocyte chemoattractant protein 1, THBS4 thrombospondin-4

plasma THBS4 was associated with accelerated long-term forgetting in list recall ($\beta = -0.46, p = 0.002$), figure recall ($\beta = -0.44, p = 0.004$), and list recognition ($\beta = -0.37, p = 0.010$). In addition, there were significant associations of higher plasma GDF11 with accelerated forgetting in figure recall ($\beta = 0.39, p = 0.007$) and higher plasma CCL11 with accelerated forgetting in list recognition ($\beta = 0.44, p = 0.002$).

In mutation carriers, there was a consistent association between higher plasma GDF11 and accelerated forgetting in figure recall ($\beta = 0.59, p = 0.012$), but no evidence of correlations between any other blood-borne factors and long-term forgetting rates.

Associations between estimated proximity to onset and long-term forgetting rates

In mutation carriers, there was an association between estimated proximity to onset and long-term forgetting rates for list recall ($R = -0.69, p = 0.002$; Fig. 2a) and recognition ($R = -0.78, p < 0.001$; Fig. 2b), such that those who were close to clinical onset showed faster forgetting rates. However, no significant relationships were found for the figure recall ($R = -0.44, p = 0.071$).

Association between long-term forgetting rates and subject cognitive concerns

In the whole sample and mutation carriers, an association existed between higher total score or memory subscore of SCD-Q MyCog and accelerated long-term forgetting, which reached statistical significance for list recall, but not for figure recall and list recognition (Supplementary Table 2).

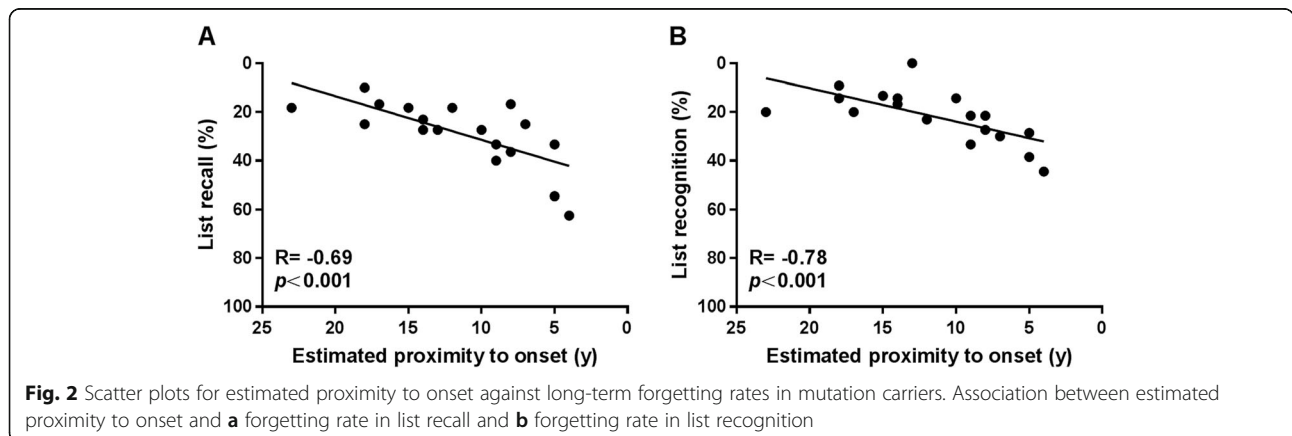
Discussion

The present study added more evidence to existing literature characterizing accelerated long-term forgetting as a subclinical cognitive impairment in ADAD mutation carriers. Further, we showed that there is an association between senescence-related blood-borne factors and

accelerated long-term forgetting in pooled participants with mutation carriers and non-carriers. To our knowledge, this study is the first that attempt to determine the association of blood-borne factors and accelerated long-term forgetting in asymptomatic individuals. Our findings revealed the promise of blood-borne factors as potential biomarkers for the prediction of accelerated long-term forgetting.

In this study, we have demonstrated that accelerated long-term forgetting is an early feature of presymptomatic ADAD mutation carriers, who were several years before their predicted age at symptom onset. Our finding was consistent with those reported in previous studies that accelerated long-term forgetting is present in presymptomatic ADAD mutation carriers, and might provide a means of discriminating presymptomatic AD from controls [5, 6]. In addition, accelerated long-term forgetting was associated with greater subjective cognitive concerns in mutation carriers. This association is also consistent with findings from the previous study [5]. As for sporadic AD, accelerated long-term forgetting was also found in asymptomatic *APOE* $\epsilon 4$ carriers with a mean age well below their predicted age at symptom onset [22, 23]. More recently, a longitudinal study showed that accelerated long-term forgetting over 4 weeks could predict cognitive decline in healthy older people [7]. Together, these results highlight the potential of accelerated long-term forgetting in screening for patient candidates and guiding the selection of outcome measures in future preclinical trials.

The molecular mechanisms underlying accelerated long-term forgetting are not fully understood. The pattern of relatively intact retention over short delays, coupled with poor retention after longer delays, is suggestive of a selective impairment of memory consolidation [24]. Memory consolidation is the process that transforms the labile memory traces into stable long-term memories, with the hippocampus and MTL cortices known to play an important part [25]. Therefore, it



is currently believed that impaired memory consolidation caused by hippocampal dysfunction might produce accelerated long-term forgetting. For example, a recent study has shown that both seizures and interictal spikes in the hippocampus during sleep impair long-term memory consolidation, supporting the notion that hippocampal dysfunction causes accelerated long-term forgetting [26].

Hippocampal dysfunction has been used to explain the phenomenon of accelerated long-term forgetting, as mentioned above. Thus, blood-borne factors that contribute to neurogenesis and synaptic plasticity in the hippocampus could provide useful biomarkers for accelerated long-term forgetting. In this study, lower plasma THBS4 was significantly associated with accelerated long-term forgetting. Thrombospondins, including THBS 1-5, are large secreted extracellular matrix proteins that mediate cell–cell and cell–matrix interactions [27]. As members of synaptic organizers, thrombospondins have been previously identified as possible synaptogenic factors in the central nervous system [28, 29]. In a recent *in vitro* study, THBS4 was found to directly stimulate dendritogenesis and synapse formation in cultured neurons [10]. Given the fact that it may be possible for THBS4 to be transported from the blood into the brain parenchyma and directly activate synapse formation and function [10], it is reasonable to assume that reductions in circulating THBS4 levels might contribute to decrease synaptic connectivity and cognitive impairments. Thus, lower levels of plasma THBS4 in relation to accelerated long-term forgetting in our study are to be expected.

Additionally, we found that higher plasma GDF11, a secreted member of the transforming growth factor β (TGF- β) superfamily, is associated with accelerated long-term forgetting. This is an unexpected finding since GDF11 may enhance neurogenesis in the adult brain [9] and reduced AD pathology has been observed in association with increasing plasma GDF11 concentrations in AD animal models [30]. However, the role of GDF11 in cognition remains controversial. Another study suggested that plasma GDF11 may not exert a protective effect on cognitive function in patients with age-related cognitive impairment [31]. Actually, previous studies have reported either a beneficial or detrimental role of GDF11 in age-related dysfunction [32]. Specifically, some studies have suggested that reduced GDF11 blood levels are responsible for age-related cardiac hypertrophy [33] and skeletal muscle dysfunction [34], while others have shown that increasing levels of GDF11 can induce skeletal and cardiac muscle wasting [35, 36]. In addition, the concentration of GDF11 in plasma was determined using an antibody-based method in our study, which may be thwarted by insufficient specificity due to the

high homology between GDF11 and myostatin (MSTN/GDF8) [37]. Accumulating evidence suggests that these two homologous proteins can have opposite effects on biological processes, such as neurogenesis, in the brain [38]. Thus, further studies are required to determine whether and how GDF11 in the blood may influence cognitive function and memory performance.

CCL11, also known as eotaxin-1, is a chemokine that plays an important role in a variety of inflammatory conditions [39]. Although traditionally identified as an eosinophil chemoattractant, CCL11 can be secreted by lymphocytes, monocytes, endothelial cells, and other cells [40]. In the present study, higher plasma CCL11 has also been found to be correlated with accelerated long-term forgetting. This finding is consistent with prior studies using animal models of aging demonstrating increased plasma CCL11 correlate with reduced neurogenesis and impaired learning and memory [8]. Previous studies have suggested that circulating concentration of CCL11 is significantly higher in AD patients than in normal controls [41, 42], and age-related increases in CCL11 are negatively associated with performance on measures of global cognition, executive functions, and episodic memory [43–45]. It is worth mentioning that circulating CCL11 can access many regions of the brain and exert negative influences in the central nervous system via transport across the blood–brain barrier [46]. Thus, blood-borne CCL11 may be involved in the process of AD in aging, and peripheral CCL11 concentrations might be able to predict cognitive impairment.

Limitations

This study is not without limitations. The first is the relatively small sample size in the present study, which may affect the quality of the statistical analysis. As such, validation in future studies with larger sample sizes is needed to confirm our findings. Another important limitation is the absence of longitudinal assessments of the participants, and we failed to infer causality with the presented data. To fully appreciate the dynamic changes of blood-borne factors and accelerated long-term forgetting along the disease continuum, further follow-up of these participants is needed. Finally, some factors cannot be readily controlled, such as practice effect, 7-day testing environment, and participant's sleep quality. These methodological issues are important to take into account when investigating accelerated long-term forgetting in our future studies.

Conclusions

In summary, our study suggests that accelerated long-term forgetting, as a hippocampal-dependent memory impairment, is present at the earlier stage in the AD

continuum. Senescence-related blood-borne factors that correlated with hippocampal dysfunction, including THBS4, GDF11, and CCL11, may present ideal biomarkers for accelerated long-term forgetting. Our findings underscore the idea that blood-borne factors may provide insights into subtle cognitive decline in pre-symptomatic AD, which deserves further studies in the next.

Abbreviations

AD: Alzheimer's disease; ADAD: Autosomal dominant autosomal dominant; APP: Amyloid precursor protein; CCL11: CC chemokine ligand 11; CDR: Clinical Dementia Rating; CFAN: Chinese Familial Alzheimer's Disease Network; ELISA: Enzyme-linked immunosorbent assay; GDF11: Growth differentiation factor 11; MCP1: Monocyte chemoattractant protein 1; MMSE: Mini-Mental State Examination; MoCA: Montreal Cognitive Assessment; PSEN1: Presenilin 1; PSEN2: Presenilin 2; ROCF: Rey-Osterrieth Complex Figure; ROC: Receiver operating characteristic; SCD-Q: Subjective Cognitive Decline Questionnaire; SPARCL1: Secreted protein acidic and rich in cysteine like 1; THBS4: Thrombospondin-4; WHO-UCLA-AVLT: WHO-University of California Los Angeles-Auditory Verbal Learning test

Supplementary Information

The online version contains supplementary material available at <https://doi.org/10.1186/s13195-021-00845-0>.

Additional file 1: Supplementary data.

Acknowledgements

We would like to thank all the researchers in the CFAN study (<http://www.chinacfan.org>). We thank the participants and their families for their generous support of this study and our clinical colleagues across China for referring patients.

Authors' contributions

YJ, LJ, and JJ designed the research and wrote the manuscript. YJ, CK, TL, HJ, YL, and QW contributed to participant recruitment and data collection. YJ, CK, LJ, MQ, YL, DL, FL, and JJ analyzed and interpreted the data. YJ, CK, LJ, MQ, YL, DL, and JJ reviewed and revised the manuscript. All authors read and approved the final manuscript.

Funding

This study was supported by the Key Project of the National Natural Science Foundation of China (81530036), the National Key Scientific Instrument and Equipment Development Project (31627803), the Key Project of the National Natural Science Foundation of China (U20A20354), Beijing Scholars Program, and Beijing Brain Initiative from Beijing Municipal Science & Technology Commission (Z201100005520016, Z201100005520017).

Availability of data and materials

The data generated and analyzed in the current study can be made available upon request to the corresponding author and the CFAN committee in order to ensure that the privacy of the CFAN participants is protected.

Declarations

Ethics approval and consent to participate

The study procedures were approved by the Medical Research Ethics Committee at Xuanwu Hospital, and written informed consents were obtained from all participants.

Consent for publication

Not applicable.

Competing interests

The authors declare that they have no competing interests.

Author details

¹Innovation Center for Neurological Disorders and Department of Neurology, Xuanwu Hospital, Capital Medical University, National Clinical Research Center for Geriatric Diseases, 45 Changchun St, Beijing, China. ²Beijing Key Laboratory of Geriatric Cognitive Disorders, Beijing, China. ³Clinical Center for Neurodegenerative Disease and Memory Impairment, Capital Medical University, Beijing, China. ⁴Center of Alzheimer's Disease, Beijing Institute of Brain Disorders, Collaborative Innovation Center for Brain Disorders, Capital Medical University, Beijing, China.

Received: 27 February 2021 Accepted: 10 May 2021

Published online: 27 May 2021

References

- Jia L, Quan M, Fu Y, Zhao T, Li Y, Wei C, et al. Dementia in China: epidemiology, clinical management, and research advances. *Lancet Neurol*. 2020;19(1):81–92. [https://doi.org/10.1016/S1474-4422\(19\)30290-X](https://doi.org/10.1016/S1474-4422(19)30290-X).
- Xiong C, Luo J, Agboola F, Li Y, Albert M, Johnson SC, et al. A harmonized longitudinal biomarkers and cognition database for assessing the natural history of preclinical Alzheimer's disease from young adulthood and for designing prevention trials. *Alzheimers Dement*. 2019;15(11):1448–57. <https://doi.org/10.1016/j.jalz.2019.06.4955>.
- Bateman RJ, Xiong C, Benzinger TL, Fagan AM, Goate A, Fox NC, et al. Clinical and biomarker changes in dominantly inherited Alzheimer's disease. *N Engl J Med*. 2012;367(9):795–804. <https://doi.org/10.1056/NEJMoa1202753>.
- Caselli RJ, Langlais BT, Dueck AC, Chen Y, Su Y, Locke DEC, et al. Neuropsychological decline up to 20 years before incident mild cognitive impairment. *Alzheimers Dement*. 2020;16(3):512–23. <https://doi.org/10.1016/j.jalz.2019.09.085>.
- Weston PSJ, Nicholas JM, Henley SMD, Liang Y, Macpherson K, Donnachie E, et al. Accelerated long-term forgetting in presymptomatic autosomal dominant Alzheimer's disease: a cross-sectional study. *Lancet Neurol*. 2018;17(2):123–32. [https://doi.org/10.1016/S1474-4422\(17\)30434-9](https://doi.org/10.1016/S1474-4422(17)30434-9).
- O'Connor A, Weston PSJ, Pavisic IM, Ryan NS, Collins JD, Lu K, et al. Quantitative detection and staging of presymptomatic cognitive decline in familial Alzheimer's disease: a retrospective cohort analysis. *Alzheimers Res Ther*. 2020;12(1):126. <https://doi.org/10.1186/s13195-020-00695-2>.
- Wearn AR, Saunders-Jennings E, Nurdal V, Hadley E, Knight MJ, Newson M, et al. Accelerated long-term forgetting in healthy older adults predicts cognitive decline over 1 year. *Alzheimers Res Ther*. 2020;12(1):119. <https://doi.org/10.1186/s13195-020-00693-4>.
- Villeda SA, Luo J, Mosher KI, Zou B, Britschgi M, Bieri G, et al. The ageing systemic milieu negatively regulates neurogenesis and cognitive function. *Nature*. 2011;477(7362):90–4. <https://doi.org/10.1038/nature10357>.
- Katsimpardi L, Litterman NK, Schein PA, Miller CM, Loffredo FS, Wojtkiewicz GR, et al. Vascular and neurogenic rejuvenation of the aging mouse brain by young systemic factors. *Science*. 2014;344(6184):630–4. <https://doi.org/10.1126/science.1251141>.
- Gan KJ, Sudhof TC. Specific factors in blood from young but not old mice directly promote synapse formation and NMDA-receptor recruitment. *Proc Natl Acad Sci U S A*. 2019;116(25):12524–33. <https://doi.org/10.1073/pnas.1902672116>.
- Ma J, Gao B, Zhang K, Zhang Q, Jia G, Li J, et al. Circulating factors in young blood as potential therapeutic agents for age-related neurodegenerative and neurovascular diseases. *Brain Res Bull*. 2019;153:15–23. <https://doi.org/10.1016/j.brainresbull.2019.08.004>.
- Kang JS, Yang YR. Circulating plasma factors involved in rejuvenation. *Aging (Albany NY)*. 2020;12(22):23394–408. <https://doi.org/10.18632/aging.103933>.
- Jia L, Fu Y, Shen L, Zhang H, Zhu M, Qiu Q, et al. PSEN1, PSEN2, and APP mutations in 404 Chinese pedigrees with familial Alzheimer's disease. *Alzheimers Dement*. 2020;16(1):178–91. <https://doi.org/10.1002/alz.12005>.
- Preisich O, Schultz SA, Apel A, Kuhle J, Kaeser SA, Barro C, et al. Serum neurofilament dynamics predicts neurodegeneration and clinical progression in presymptomatic Alzheimer's disease. *Nat Med*. 2019;25(2):277–83. <https://doi.org/10.1038/s41591-018-0304-3>.
- Morris JC. The Clinical Dementia Rating (CDR): current version and scoring rules. *Neurology*. 1993;43(11):2412–4. <https://doi.org/10.1212/wnl.43.11.2412-a>.
- Folstein MF, Folstein SE, McHugh PR. "Mini-mental state". A practical method for grading the cognitive state of patients for the clinician. *J Psychiatr Res*. 1975;12(3):189–98. [https://doi.org/10.1016/0022-3956\(75\)90026-6](https://doi.org/10.1016/0022-3956(75)90026-6).

17. Nasreddine ZS, Phillips NA, Bedirian V, Charbonneau S, Whitehead V, Collin I, et al. The Montreal Cognitive Assessment, MoCA: a brief screening tool for mild cognitive impairment. *J Am Geriatr Soc.* 2005;53(4):695–9. <https://doi.org/10.1111/j.1532-5415.2005.53221.x>.
18. Rami L, Mollica MA, Garcia-Sanchez C, Saldana J, Sanchez B, Sala I, et al. The Subjective Cognitive Decline Questionnaire (SCD-Q): a validation study. *J Alzheimers Dis.* 2014;41(2):453–66. <https://doi.org/10.3233/JAD-132027>.
19. Maj M, Satz P, Janssen R, Zaudig M, Starace F, D'Elia L, et al. WHO Neuropsychiatric AIDS study, cross-sectional phase II. Neuropsychological and neurological findings. *Arch Gen Psychiatry.* 1994;51(1):51–61. <https://doi.org/10.1001/archpsyc.1994.03950010051007>.
20. Buhlmann U, Deckersbach T, Engelhard I, Cook LM, Rauch SL, Kathmann N, et al. Cognitive retraining for organizational impairment in obsessive-compulsive disorder. *Psychiatry Res.* 2006;144(2-3):109–16. <https://doi.org/10.1016/j.psychres.2005.10.012>.
21. Geurts S, van der Werf SP, Kwa VIH, Kessels RPC. Accelerated long-term forgetting after TIA or minor stroke: a more sensitive measure for detecting subtle memory dysfunction? *Cortex.* 2019;110:150–6. <https://doi.org/10.1016/j.cortex.2018.04.002>.
22. Zimmermann JF, Butler CR. Accelerated long-term forgetting in asymptomatic APOE epsilon4 carriers. *Lancet Neurol.* 2018;17(5):394–5. [https://doi.org/10.1016/S1474-4422\(18\)30078-4](https://doi.org/10.1016/S1474-4422(18)30078-4).
23. Tort-Merino A, Laine M, Valech N, Olives J, Leon M, Ecay-Torres M, et al. Accelerated long-term forgetting over three months in asymptomatic APOE varepsilon4 carriers. *Ann Clin Transl Neurol.* 2021;8(2):477–84.
24. Hoefijzers S, Dewar M, Della Sala S, Zeman A, Butler C. Accelerated long-term forgetting in transient epileptic amnesia: an acquisition or consolidation deficit? *Neuropsychologia.* 2013;51(8):1549–55. <https://doi.org/10.1016/j.neuropsychologia.2013.04.017>.
25. Squire LR, Genzel L, Wixted JT, Morris RG. Memory consolidation. *Cold Spring Harb Perspect Biol.* 2015;7(8):a021766. <https://doi.org/10.1101/cshperspect.a021766>.
26. Lambert I, Tramoni-Negre E, Lagarde S, Roehri N, Giusiano B, Trebuchon-Da Fonseca A, et al. Hippocampal interictal spikes during sleep impact long-term memory consolidation. *Ann Neurol.* 2020;87(6):976–87. <https://doi.org/10.1002/ana.25744>.
27. Yuzaki M. Two classes of secreted synaptic organizers in the central nervous system. *Annu Rev Physiol.* 2018;80(1):243–62. <https://doi.org/10.1146/annurev-physiol-021317-121322>.
28. Risher WC, Eroglu C. Thrombospondins as key regulators of synaptogenesis in the central nervous system. *Matrix Biol.* 2012;31(3):170–7. <https://doi.org/10.1016/j.matbio.2012.01.004>.
29. Jayakumar AR, Apeksha A, Norenberg MD. Role of matricellular proteins in disorders of the central nervous system. *Neurochem Res.* 2017;42(3):858–75. <https://doi.org/10.1007/s11064-016-2088-5>.
30. Wang F, Shen X, Li S, Chen L, Wang Y, Qin J, et al. Splenocytes derived from young WT mice prevent AD progression in APP^{swe}/PSEN1^{dE9} transgenic mice. *Oncotarget.* 2015;6(25):20851–62. <https://doi.org/10.18632/oncotarget.4930>.
31. Yang R, Fu S, Zhao L, Zhen B, Ye L, Niu X, et al. Quantitation of circulating GDF-11 and beta2-MG in aged patients with age-related impairment in cognitive function. *Clin Sci (Lond).* 2017;131(15):1895–904. <https://doi.org/10.1042/CS20171028>.
32. Hudobenko J, Ganesh BP, Jiang J, Mohan EC, Lee S, Sheth S, et al. Growth differentiation factor-11 supplementation improves survival and promotes recovery after ischemic stroke in aged mice. *Aging (Albany NY).* 2020;12(9):8049–66. <https://doi.org/10.18632/aging.103122>.
33. Loffredo FS, Steinhilber ML, Jay SM, Gannon J, Pancoast JR, Yalamanchi P, et al. Growth differentiation factor 11 is a circulating factor that reverses age-related cardiac hypertrophy. *Cell.* 2013;153(4):828–39. <https://doi.org/10.1016/j.cell.2013.04.015>.
34. Sinha M, Jang YC, Oh J, Khong D, Wu EY, Manohar R, et al. Restoring systemic GDF11 levels reverses age-related dysfunction in mouse skeletal muscle. *Science.* 2014;344(6184):649–52. <https://doi.org/10.1126/science.1251152>.
35. Zimmers TA, Jiang Y, Wang M, Liang TW, Rupert JE, Au ED, et al. Exogenous GDF11 induces cardiac and skeletal muscle dysfunction and wasting. *Basic Res Cardiol.* 2017;112(4):48. <https://doi.org/10.1007/s00395-017-0639-9>.
36. Hammers DW, Merscham-Banda M, Hsiao JY, Engst S, Hartman JJ, Sweeney HL. Supraphysiological levels of GDF11 induce striated muscle atrophy. *EMBO Mol Med.* 2017;9(4):531–44. <https://doi.org/10.15252/emmm.201607231>.
37. Schafer MJ, LeBrasseur NK. The influence of GDF11 on brain fate and function. *Geroscience.* 2019;41(1):1–11. <https://doi.org/10.1007/s11357-019-00054-6>.
38. Suh J, Lee YS. Similar sequences but dissimilar biological functions of GDF11 and myostatin. *Exp Mol Med.* 2020;52(10):1673–93. <https://doi.org/10.1038/s12276-020-00516-4>.
39. Ivanovska M, Abdi Z, Murdjeva M, Macedo D, Maes A, Maes M. CCL-11 or eotaxin-1: an immune marker for ageing and accelerated ageing in neuropsychiatric disorders. *Pharmaceuticals (Basel).* 2020;13(9):230.
40. Roy-O'Reilly M, Ritzel RM, Conway SE, Staff I, Fortunato G, McCullough LD. CCL11 (eotaxin-1) levels predict long-term functional outcomes in patients following ischemic stroke. *Transl Stroke Res.* 2017;8(6):578–84. <https://doi.org/10.1007/s12975-017-0545-3>.
41. Choi C, Jeong JH, Jang JS, Choi K, Lee J, Kwon J, et al. Multiplex analysis of cytokines in the serum and cerebrospinal fluid of patients with Alzheimer's disease by color-coded bead technology. *J Clin Neurol.* 2008;4(2):84–8. <https://doi.org/10.3988/jcn.2008.4.2.84>.
42. Morgan AR, Touchard S, Leckey C, O'Hagan C, Nevado-Holgado AJ, Consortium N, et al. Inflammatory biomarkers in Alzheimer's disease plasma. *Alzheimers Dement.* 2019;15(6):776–87. <https://doi.org/10.1016/j.jalz.2019.03.007>.
43. Bettcher BM, Fitch R, Wynn MJ, Lalli MA, Elofson J, Jastrzab L, et al. MCP-1 and eotaxin-1 selectively and negatively associate with memory in MCI and Alzheimer's disease dementia phenotypes. *Alzheimers Dement (Amst).* 2016;3(1):91–7. <https://doi.org/10.1016/j.dadm.2016.05.004>.
44. Butcher L, Peres K, Andre P, Morris RH, Walter S, Dartigues JF, et al. Association between plasma CCL11 (eotaxin-1) and cognitive status in older adults: differences between rural and urban dwellers. *Exp Gerontol.* 2018;113:173–9. <https://doi.org/10.1016/j.exger.2018.10.004>.
45. Sirivichayakul S, Kanchanatawan B, Thika S, Carvalho AF, Maes M. Eotaxin, an endogenous cognitive deteriorating chemokine (ECDC), is a major contributor to cognitive decline in normal people and to executive, memory, and sustained attention deficits, formal thought disorders, and psychopathology in schizophrenia patients. *Neurotox Res.* 2019;35(1):122–38. <https://doi.org/10.1007/s12640-018-9937-8>.
46. Erickson MA, Morofuji Y, Owen JB, Banks WA. Rapid transport of CCL11 across the blood-brain barrier: regional variation and importance of blood cells. *J Pharmacol Exp Ther.* 2014;349(3):497–507. <https://doi.org/10.1124/jpet.114.213074>.

Publisher's Note

Springer Nature remains neutral with regard to jurisdictional claims in published maps and institutional affiliations.

Ready to submit your research? Choose BMC and benefit from:

- fast, convenient online submission
- thorough peer review by experienced researchers in your field
- rapid publication on acceptance
- support for research data, including large and complex data types
- gold Open Access which fosters wider collaboration and increased citations
- maximum visibility for your research: over 100M website views per year

At BMC, research is always in progress.

Learn more biomedcentral.com/submissions

