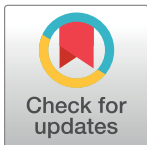


CORRECTION

Correction: Migrations of young spotted seals (*Phoca largha*) from Peter the Great Bay, Sea of Japan/East Sea, and the pattern of their use of seasonal habitats

Alexey M. Trukhin, Peter A. Permyakov, Sergey D. Ryazanov, Vyacheslav B. Lobanov, Hyun Woo Kim, Young Min Choi, Hawsun Sohn

[Fig 8](#) is incorrect. The authors have provided a corrected version here.



OPEN ACCESS

Citation: Trukhin AM, Permyakov PA, Ryazanov SD, Lobanov VB, Kim HW, Choi YM, et al. (2021) Correction: Migrations of young spotted seals (*Phoca largha*) from Peter the Great Bay, Sea of Japan/East Sea, and the pattern of their use of seasonal habitats. PLoS ONE 16(9): e0257121. <https://doi.org/10.1371/journal.pone.0257121>

Published: September 1, 2021

Copyright: © 2021 Trukhin et al. This is an open access article distributed under the terms of the [Creative Commons Attribution License](#), which permits unrestricted use, distribution, and reproduction in any medium, provided the original author and source are credited.

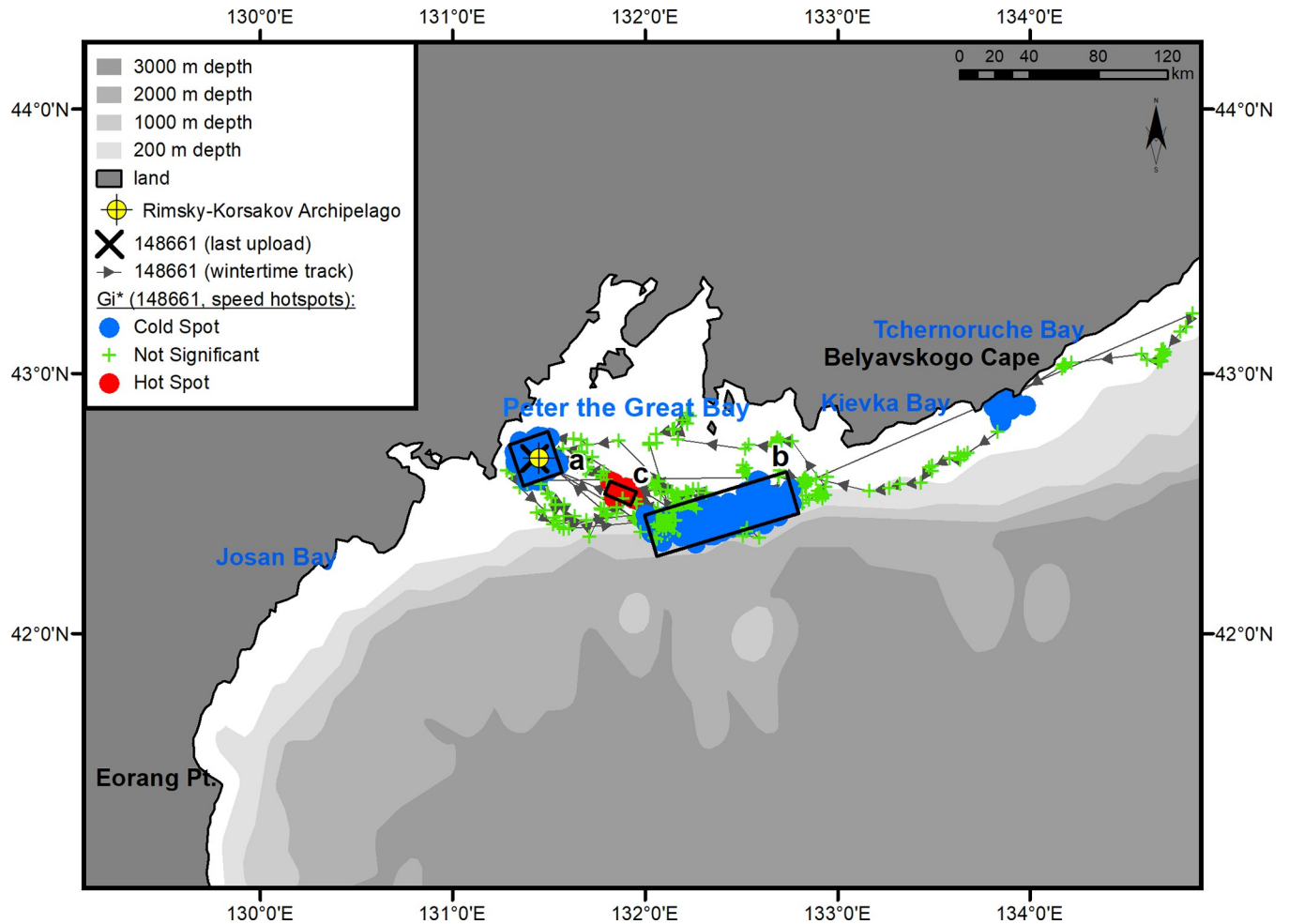


Fig 8. Winter habitats of underyearling male #148661. The numbers of the hot areas are the same as in Fig 3.

<https://doi.org/10.1371/journal.pone.0257121.g001>

Reference

1. Trukhin AM, Permyakov PA, Ryazanov SD, Lobanov VB, Kim HW, Choi YM, et al. (2021) Migrations of young spotted seals (*Phoca largha*) from Peter the Great Bay, Sea of Japan/East Sea, and the pattern of their use of seasonal habitats. PLoS ONE 16(1): e0244232. <https://doi.org/10.1371/journal.pone.0244232> PMID: 33400696