

CORRIGENDUM

In the recent article by Orfinger et al. (2022), Figures 3–6 were published with incorrect captions.

The figures with correct captions are shown below:

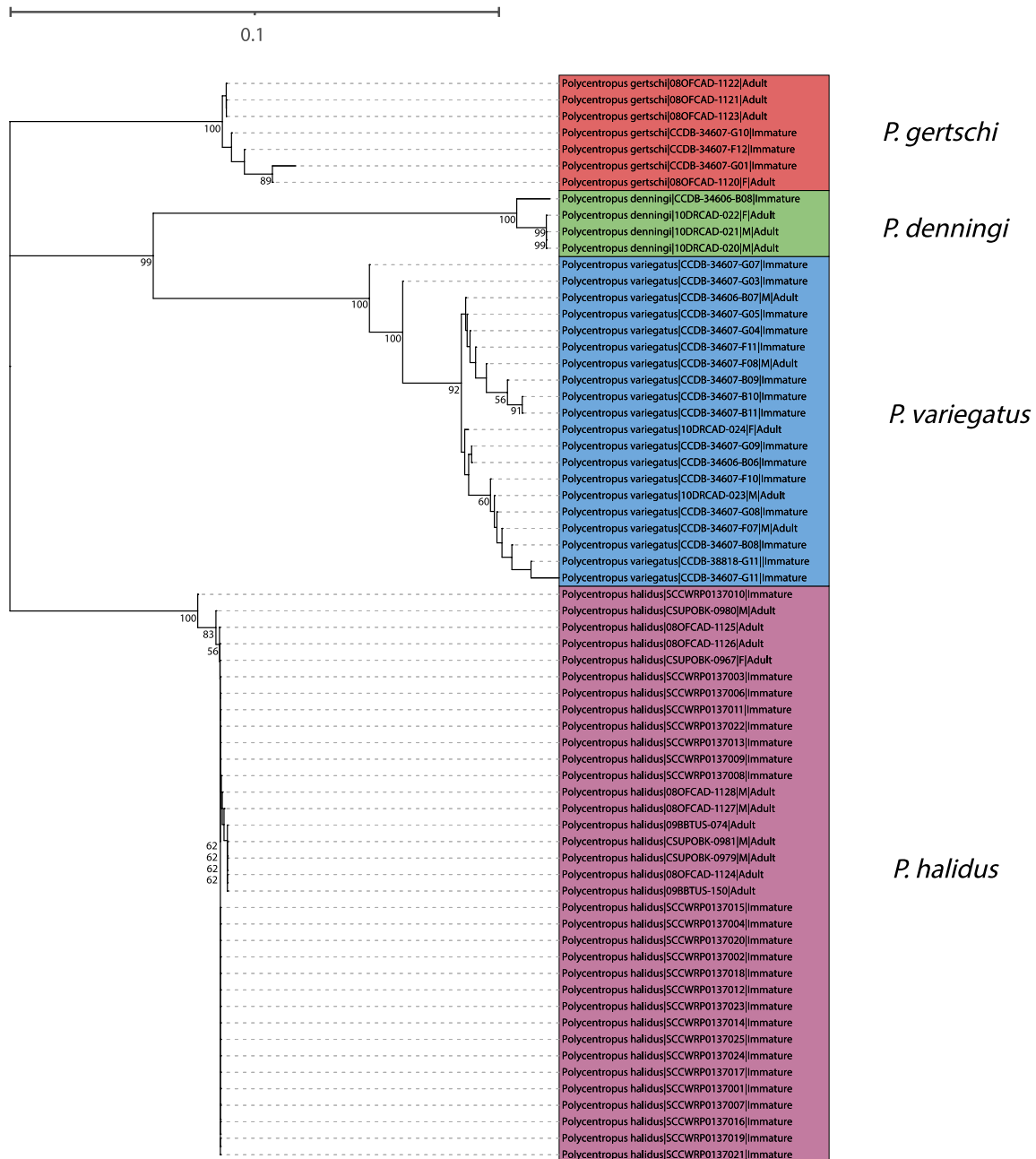


FIGURE 3 Neighbor-joining tree for mtCOI barcoding sequence data of western taxa yielding successful associations. Only bootstrap values $\geq 50\%$ are shown. Specimen labels at branch tips include taxon, BOLD Sample ID, sex (if adult and available), and life stage. Scale bar indicates genetic distance

This is an open access article under the terms of the [Creative Commons Attribution](https://creativecommons.org/licenses/by/4.0/) License, which permits use, distribution and reproduction in any medium, provided the original work is properly cited.

© 2022 The Authors. *Ecology and Evolution* published by John Wiley & Sons Ltd.

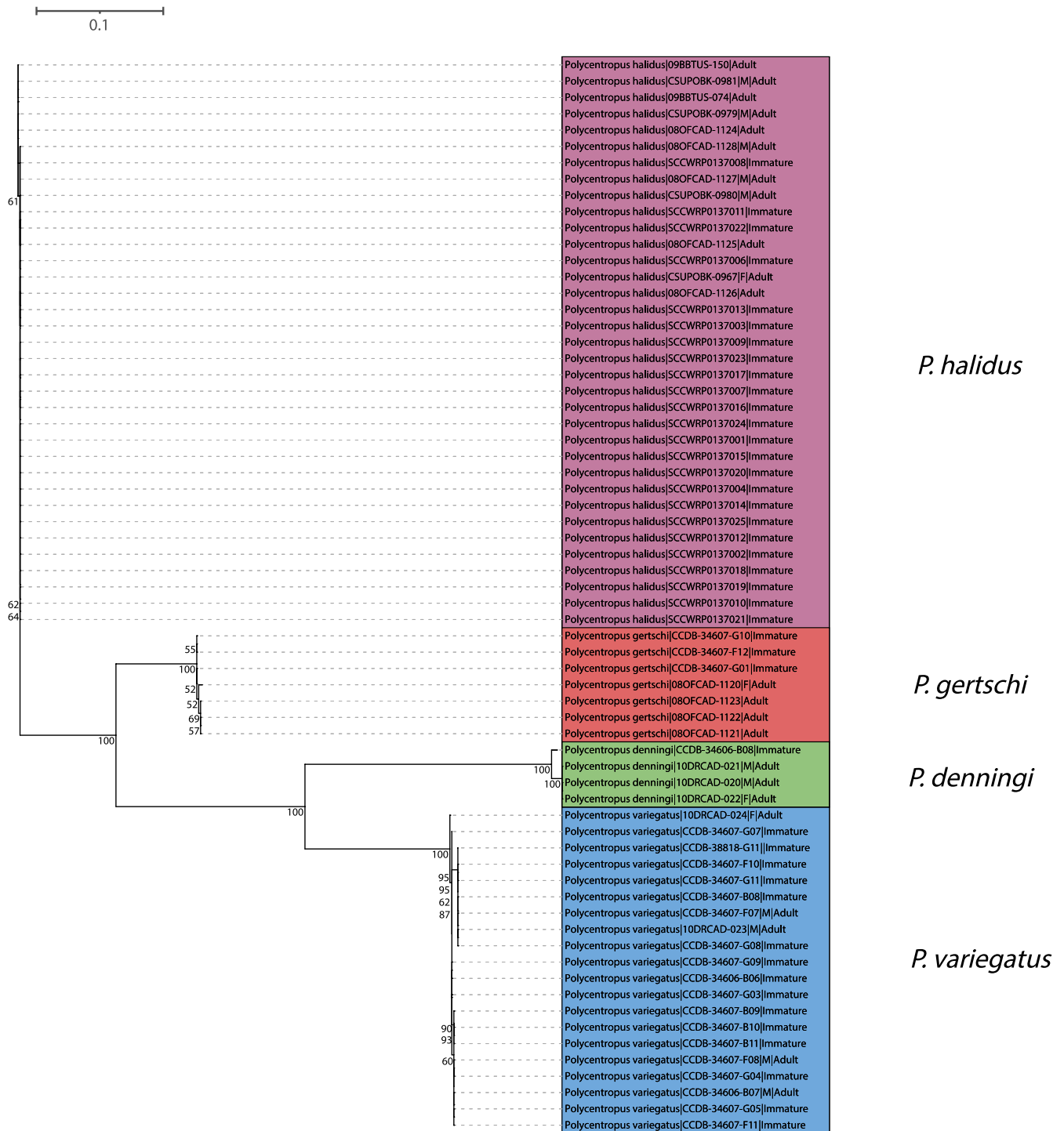


FIGURE 4 Maximum likelihood tree for mtCOI barcoding sequence data of western taxa yielding successful associations. Only bootstrap values $\geq 50\%$ are shown. Specimen labels at branch tips include taxon, BOLD Sample ID, sex (if adult and available), and life stage. Scale bar indicates substitutions per site

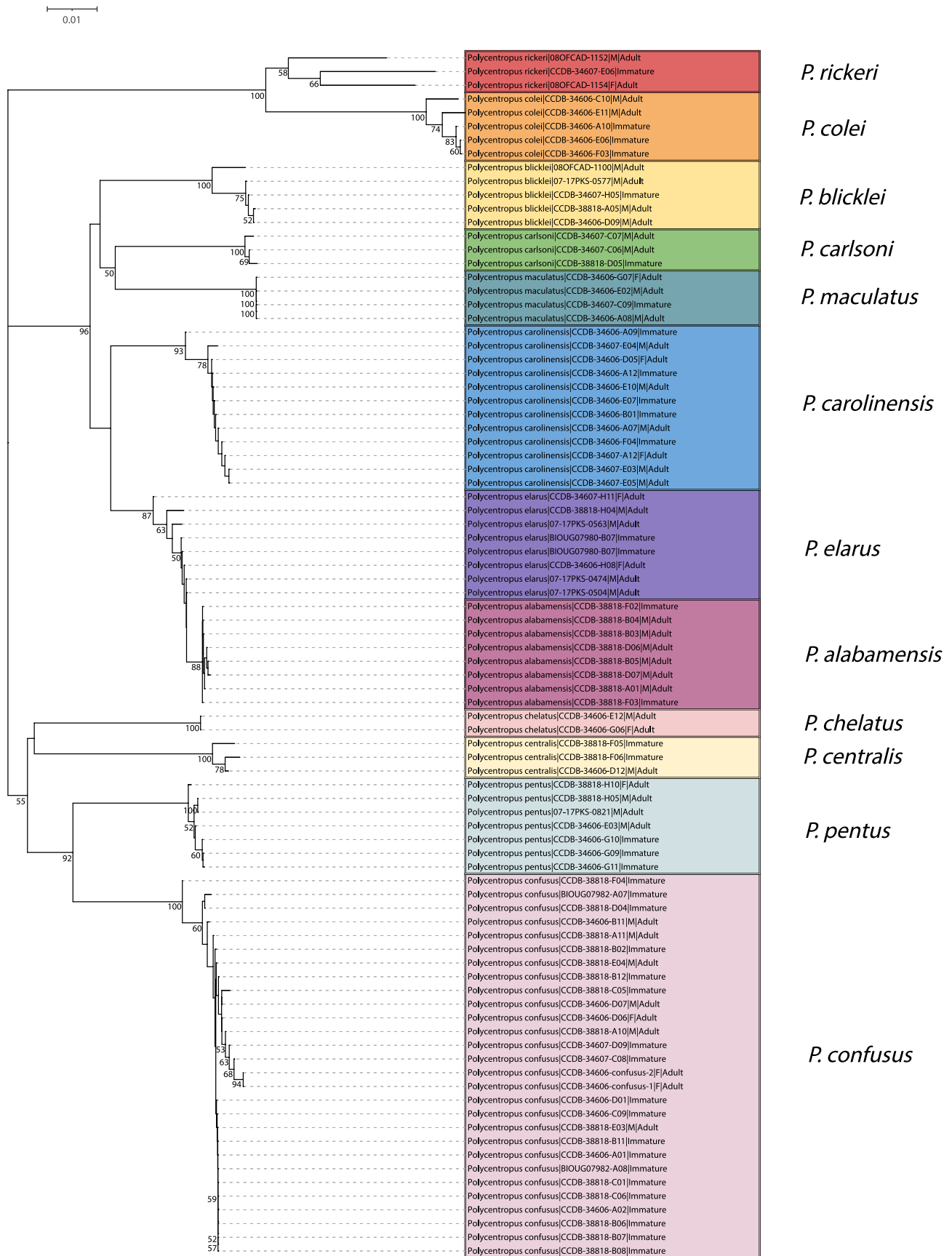


FIGURE 5 Neighbor-joining tree for mtCOI barcoding sequence data of eastern taxa yielding successful associations. Only bootstrap values $\geq 50\%$ are shown. Specimen labels at branch tips include taxon, BOLD Sample ID, sex (if adult and available), and life stage. Scale bar indicates genetic distance

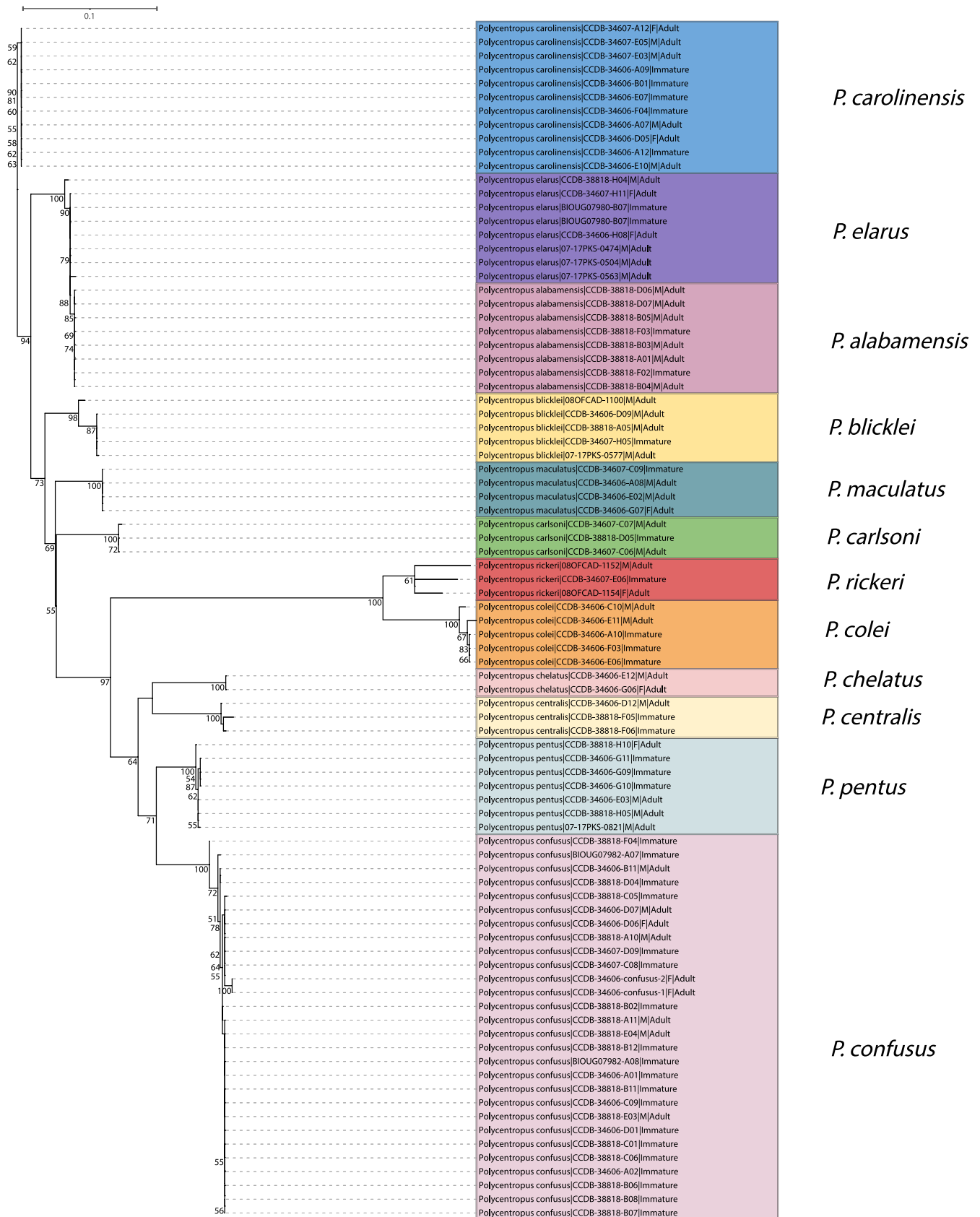


FIGURE 6 Maximum likelihood tree for mtCOI barcoding sequence data of eastern taxa yielding successful associations. Only bootstrap values $\geq 50\%$ are shown. Specimen labels at branch tips include taxon, BOLD Sample ID, sex (if adult and available), and life stage. Scale bar indicates substitutions per site

REFERENCE

Orfinger, A. B., Morse, J. C., & Hix, R. L. (2022). Associating life stages and sexes of Nearctic *Polycentropus* Curtis, 1835 (Trichoptera: Polycentropodidae) using mitochondrial DNA barcoding. *Ecology and Evolution*, 12, e8741. <https://doi.org/10.1002/ece3.8741>