



# The Brazilian Journal of INFECTIOUS DISEASES

[www.elsevier.com/locate/bjid](http://www.elsevier.com/locate/bjid)



## Original article

# Comparison of PCR-based methods for the simultaneous detection of *Neisseria meningitidis*, *Haemophilus influenzae*, and *Streptococcus pneumoniae* in clinical samples



Ivano de Filippis\*, Claudia Ferreira de Andrade, Nathalia Caldeira, Aline Carvalho de Azevedo, Antonio Eugenio de Almeida

Fundação Oswaldo Cruz (FIOCRUZ), Instituto Nacional de Controle de Qualidade em Saúde (INCQS), Rio de Janeiro, RJ, Brazil

### ARTICLE INFO

#### Article history:

Received 15 August 2015

Accepted 14 April 2016

Available online 30 May 2016

#### Keywords:

Diagnostic

*Neisseria meningitidis*

*Streptococcus pneumoniae*

*Haemophilus influenzae*

### ABSTRACT

**Background:** Several in-house PCR-based assays have been described for the detection of bacterial meningitis caused by *Neisseria meningitidis*, *Streptococcus pneumoniae*, and *Haemophilus influenzae* from clinical samples. PCR-based methods targeting different bacterial genes are frequently used by different laboratories worldwide, but no standard method has ever been established. The aim of our study was to compare different in-house and a commercial PCR-based tests for the detection of bacterial pathogens causing meningitis and invasive disease in humans.

**Methods:** A total of 110 isolates and 134 clinical samples (99 cerebrospinal fluid and 35 blood samples) collected from suspected cases of invasive disease were analyzed. Specific sets of primers frequently used for PCR-diagnosis of the three pathogens were used and compared with the results achieved using the multiplex approach described here. Several different gene targets were used for each microorganism, namely *ctrA*, *crpA* and *nspA* for *N. meningitidis*, *ply* for *S. pneumoniae*, *P6* and *bexA* for *H. influenzae*.

**Results:** All used methods were fast, specific and sensitive, while some of the targets used for the in-house PCR assay detected lower concentrations of genomic DNA than the commercial method. An additional PCR reaction is described for the differentiation of capsulated and non-capsulated *H. influenzae* strains, the while commercial method only detects capsulated strains.

**Conclusions:** The in-house PCR methods here compared showed to be rapid, sensitive, highly specific, and cheaper than commercial methods. The in-house PCR methods could be easily adopted by public laboratories of developing countries for diagnostic purposes. The best results were achieved using primers targeting the genes *nspA*, *ply*, and *P6* which were able to detect the lowest DNA concentrations for each specific target.

© 2016 Elsevier Editora Ltda. This is an open access article under the CC BY-NC-ND license (<http://creativecommons.org/licenses/by-nc-nd/4.0/>).

\* Corresponding author.

E-mail address: [ivano.defilippis@incqs.fiocruz.br](mailto:ivano.defilippis@incqs.fiocruz.br) (I. de Filippis).

<http://dx.doi.org/10.1016/j.bjid.2016.04.005>

1413-8670/© 2016 Elsevier Editora Ltda. This is an open access article under the CC BY-NC-ND license (<http://creativecommons.org/licenses/by-nc-nd/4.0/>).

## Introduction

Infections caused by *Neisseria meningitidis* (Nm), *Streptococcus pneumoniae* (Sp) and *Haemophilus influenzae* (Hi) are responsible for high morbidity and mortality rates among children and adults in many countries each year.<sup>1,2</sup> Despite effective antimicrobial and supportive therapy, mortality rates among children remain high, with significant long-term sequelae in survivors. Although adequate treatment requires rapid detection and identification of the bacteria, traditional laboratory diagnostic methods such as culture for the identification of bacterial meningitis pathogens may take 36 h or more. Because of the similarity of clinical symptoms among invasive infections caused by Nm, Sp and Hi, physicians must frequently request laboratories to test the clinical sample for these three microorganisms to determine the causative bacteria and decide on the management of the case. Rapid diagnosis of the etiological agent is also important for health surveillance, in cases of invasive disease, to avoid transmission to close contacts.<sup>1-3</sup>

To address this problem, nonculture methods like PCR have become available during the last two decades, providing early and accurate diagnosis of bacterial meningitis.<sup>1,4-10</sup> Because of its rapid, sensitive and specific results, PCR is an important tool to improve the diagnostic of such microorganisms. An additional advantage of PCR over conventional laboratory methods is the possibility to detect genomic DNA from clinical samples without the need of previous culture. Recently, the use of a quantitative PCR method called Real Time-PCR, have improved the diagnosis of infectious agents based on molecular methods.<sup>11-17</sup> However, the higher cost of reagents and equipment could be a possible drawback to the implementation of this method in public laboratories of developing countries. The use of a basic PCR method, can be still more appropriate for diagnostic purposes in low-budget laboratories. A number of different target genes have been used in several PCR-based assays to specifically detect the genomic DNA of these agents. For *N. meningitidis* *nspA*, *ctrA* and *crgA*, for *H. influenzae* *bexA* and P6, and for *S. pneumoniae* *ply* and *lytA* genes have been used as targets.<sup>4-10,18,19</sup> In order to determine the best combination of primers, we have developed a simple multiplex PCR for the simultaneous detection of the three main agents of meningitis worldwide, Nm, Sp, and Hi. The multiplex PCR method here described allows the detection of the three microorganisms in a single-tube reaction, saving time and reagents. Target species specific genes used for Nm, Hi, and Sp detection were *nspA*, P6, and *ply* respectively. Primers amplifying higher length fragments were chosen for identification because the visualization of bands below 200bp through electrophoresis may not be clear depending of the agarose gel type and concentration used. Furthermore, we have compared the specificity and sensitivity of our method to other in-house and commercial PCR-based methods previously described for simultaneous or single detection of Nm, Hi, and Sp from clinical samples.<sup>4,5,7-10,18,19</sup>

## Materials and methods

### Bacterial isolates, clinical samples, and culture conditions

We have analyzed a total of 110 strains isolated from clinical samples (*N. meningitidis*  $n=31$ , *H. influenzae*  $n=29$ , *S. pneumoniae*  $n=50$ ) which are part of the Bacterial Culture Collection of the INCQS/FIOCRUZ institute. The strains were isolated during the last five years, from clinical samples of cerebrospinal fluid (CSF) and blood. These samples have been collected from culture-confirmed cases of patients with suspected meningitis in Brazilian public hospitals. The isolates were recovered from clinical samples after inoculation in chocolate agar (blood agar base with 5% sterile defibrinated rabbit blood at 56 °C) and incubated at 37 °C in a 5% CO<sub>2</sub> environment. The isolated strains were identified as Nm, Hi, or Sp by colony morphology, latex agglutination of specific antisera (Slidex Meningitis – Biomerieux), Gram staining and optochin susceptibility, the latter only for Sp determination. Each species was confirmed by specific PCR tests<sup>8,18,19</sup> freeze-dried and incorporated into the culture collection.

We have also analyzed 134 clinical samples (99 CSF and 35 blood) collected from suspected cases of invasive disease. Thirty four (25.3%) of these samples were considered positive for one of the three pathogens targeted in this study by conventional laboratory tests (culture, microscopy, and latex agglutination) and 100 samples were considered negative after conventional laboratory tests, but collected from patients with suspected symptoms or epidemiological link to invasive disease caused by one of the three agents here described. The study has been approved by the local research ethics committee.

Twenty nine reference strains were used as positive controls as follows: *N. meningitidis* serogroup A (ATCC 13077), *N. meningitidis* serogroup B (ATCC 13090), *N. meningitidis* serogroup C (ATCC 13102), *N. meningitidis* serogroup W135 (ATCC 35559), *H. influenzae* (ATCC 33391), *H. influenzae aegyptius* (ATCC 11116), *H. influenzae* NT (ATCC 49247), *H. influenzae* serotype a (ATCC 9006), *H. influenzae* serotype b (ATCC 33533) *H. influenzae* serotype c (ATCC 9007), *H. influenzae* serotype d (ATCC 9008), *H. influenzae* serotype e (ATCC 8142), *H. influenzae* serotype f (ATCC 9833), *S. pneumoniae* (ATCC 33400), *S. pneumoniae* serotype 14 (ATCC 6314), *S. pneumoniae* serotype 3 (ATCC 6303), *S. pneumoniae* serotype 33 (ATCC 8333), *S. pneumoniae* serotype 41 (ATCC 10341), *S. pneumoniae* serotype 51 (ATCC 10351), *S. pneumoniae* serotype 19F (ATCC 49619), *S. pneumoniae* serotype 61 (ATCC 10361), *S. pneumoniae* serotype 19A (ATCC 700673), *S. pneumoniae* serotype 14 (ATCC 700672), *S. pneumoniae* serotype 9V (ATCC 700671), *S. pneumoniae* serotype 6B (ATCC 700670), *S. pneumoniae* serotype 4 (ATCC BAA-334), *S. pneumoniae* serotype 6A (ATCC BAA-659), *S. pneumoniae* serotype 5 (ATCC BAA-341). Other 9 reference strains were also used as negative controls as they can also cause bacterial meningitis in humans: *Neisseria lactamica* (ATCC 23970), *Neisseria subflava* (ATCC 11076), *Moraxella catarrhalis* (ATCC 25238), *Streptococcus agalactiae* (ATCC 13813), *Streptococcus pyogenes* (ATCC 19615), *Klebsiella pneumoniae* (ATCC 13883), *Listeria*

*monocytogenes* (ATCC 15313), *Acinetobacter* sp. (ATCC 14293), *Escherichia coli* (ATCC 11775).

### Extraction and purification of bacterial DNA

Genomic DNA extraction and purification from isolated strains and negative clinical samples was carried out using the DNeasy Blood and Tissue extraction kit (Qiagen) according to manufacturer instructions. Briefly, 200 µl of the clinical sample were processed using the above mentioned extraction kit, which allows total purification of bacterial genomic DNA free of contaminants and enzyme inhibitors. Extraction and purification of DNA was achieved using different washing buffers and separation on Anion-Exchange Resin columns by binding of nucleic acids and further elution for final use. Purified DNA were kept at -20 °C for repeated experiments.

### Primer design and PCR conditions

Specific sets of primers frequently used for PCR-diagnosis of the three above-mentioned agents were used and compared with the results achieved using the multiplex approach here described (Table 1). For the detection of Nm by PCR, target-genes *ctrA*, *crpA* and *nspA* were used, for Sp detection two different regions of the target-gene *ply* were used. Primers *ply*-894 and *ply*-974 were described by Corless et al.,<sup>11</sup> targeting a specific region of the pneumococcus pneumolysin gene (*ply*) amplifying a 80 bp amplicon. A new pair of primers was designed to amplify a larger segment of the *ply* gene. We used the *S. pneumoniae* pneumolysin gene GenBank access #M17717 sequence as template for primers design. The region amplified was located between positions 555 and 1554 of the *ply* gene M17717. For Hi detection, target genes P6 and *bexA* were

used (Table 1). PCR was carried out using the PCR-MasterMix (Promega) DNA amplification kit according to manufacturer specifications with an equimolar mixture of the four primer pairs at 50 pmol/µl each for the multiplex approach. PCR was run on an Eppendorf Mastercycler EP thermocycler with 35 cycles of 95 °C for 30 s, 50 °C for 1 min, 72 °C for 1 min and 30 s and a final extension of 72 °C for 10 min. A 10 µl sample of the completed reaction mixture was run in a 1% agarose gel stained with ethidium bromide. Amplified products were visualized and photographed under UV light. We have also used a commercial kit for the detection of the three agents targeted in this study, named SPEED-OLIGO BACTERIAL MENINGITIS from Vircell which is a PCR-based method coupled to a dipstick device that enables specific detection of *H. influenzae*, *N. meningitidis*, and *S. pneumoniae* in cerebrospinal fluid samples. The reactions were carried out according to the producer instructions.

Purified DNA of three reference strains: Nm ATCC 13090, Hi ATCC 33533, 49247, and Sp ATCC 33400 were diluted to an undetectable level for sensitivity determination. Tenfold serial dilutions ranging from 10 µg to 10 fg DNA per µl were used in single and multiplex PCR giving a range of different sensitivity according to the specific set of primers used (Table 2). Considering a genome size of roughly 2 Mb for Nm, Sp, and Hi and since 1 kb of ds DNA has a molecular mass of 660 kDa, 10 fg of DNA represent five genomes.

The differentiation of capsulated and non-capsulated *H. influenzae* strains was carried out by the inclusion of *bexA* and P6 primer sets in a second multiplex assay. The presence of two bands at 343 bp and 273 bp indicated a capsulated Hi strain. With this result an additional PCR is required for serotype determination. The presence of a single band at 273 bp indicates a non-capsulated Hi strain and no further serotype determination was necessary.

**Table 1 – Primers sequences used in this study.**

Microrganisms and primers	Amplicon length (bp)	Reference
<i>Streptococcus pneumoniae</i>		
<i>ply</i> -894: 5'-TGCAGAGCGTCCTTTGGTCTAT-3'		
<i>ply</i> -974: 5'-CTCTTACTCGTGGTTTCCAACCTGA-3'	80	Corless et al. (2001) <sup>11</sup>
Multiplex		
<i>ply</i> -1: 5'-GACCCAGCAATTCAATTCAGTGT-3'		
<i>ply</i> -2: 5'-TACGCACTAGTGGAAATCG-3'	1000	This study
<i>Neisseria meningitidis</i>		
<i>ctrA</i> -617: 5'-GCTGCGGTAGGTGGTTCAA-3'		
<i>ctrA</i> -727: 5'-TTGTGCGCGGATTCGAACATA-3'	111	Corless et al. (2001) <sup>11</sup>
<i>crpA</i> -F: 5'-GCTGGCGCCGCTGGCAACAAAATTC-3'		
<i>crpA</i> -R: 5'-CTTCTGCAGATTGGGGCGTGCCGT-3'	230	Taha (2000) <sup>5</sup>
Multiplex		
<i>nspA</i> 1: 5'-AGCACTTGCCACACTGATTG-3'		
<i>nspA</i> 2: 5'-GGAACGGACGTTTTTGACAG-3'	481	de Filippis et al. (2005) <sup>8</sup>
<i>Haemophilus influenzae</i>		
Multiplex		
HiP6-F 5'-ACTTTTGGCGGTTACTCTGT-3'	273	van Ketel et al. (1990) <sup>18</sup>
HiP6-R 5'-TGTGCCTAATTTACCAGCAT-3'		
<i>bexA</i> -142: 5'-GGCGAAATGGTGGTGTAA-3'		
<i>bexA</i> -241: 5'-GGCCAAGAGATACTCATAGAACGTT-3'	343	Falla et al. (1994) <sup>19</sup>

**Table 2 – Sensitivity of in-house-PCR and commercial PCR-based detection kit.**

Micro-organism	Gene target	DNA detection limits <sup>a</sup>
<b>In-house PCR</b>		
<i>Neisseria meningitidis</i> ATCC 13090	<i>nspA</i> (de Filippis et al., 2005 <sup>8</sup> )	36.8 fg/μL(U/M)
<i>Neisseria meningitidis</i> ATCC 13090	<i>ctrA</i> (Corless et al., 2001 <sup>11</sup> )	52 pg/μL(U)
<i>Neisseria meningitidis</i> ATCC 13090	<i>crgA</i> (Taha, 2000 <sup>5</sup> )	52 pg/μL(U)
<i>Streptococcus pneumoniae</i> ATCC 33400	<i>ply</i> (Corless et al., 2001 <sup>11</sup> )	21.4 pg/μL(U)
<i>Streptococcus pneumoniae</i> ATCC 33400	<i>ply</i> (this study)	80 fg/μL(U/M)
<i>H. influenzae</i> ATCC 49247	<i>P6</i> (van Ketel et al., 1990 <sup>18</sup> )	100 fg/μL(U/M)
<b>Speed-oligo/MEDIVAX</b>		
<i>Neisseria meningitidis</i> ATCC 13090	<i>ctrA</i>	520 fg/μL
<i>Streptococcus pneumoniae</i> ATCC 33400	<i>lytA</i>	214 pg/μL
<i>Haemophilus influenzae</i> ATCC 33533	<i>bexA</i>	206 pg/μL

<sup>a</sup> U, uniplex-PCR; M, multiplex-PCR.

## Results

### Novel multiplex PCR

The multiplex PCR approach here described is capable to simultaneously detect genomic DNA of the three agents above described. The three primer pairs used for specifically indicate the etiological agent are *nspA* (Nm), *P6* (Hi), and *ply* (Sp) giving bands with different sizes: 481 bp, 273 bp, and 1000 bp, respectively (Fig. 1). When a positive result is achieved for Hi, an additional PCR is carried out in order to determine if the strain is capsulated. For this second PCR round, specific primers for targeting the *bexA* gene are used. Amplification of a 343 bp DNA fragment, confirms the presence of a capsulated strain which should be further analyzed to determine the serotype. No amplification after the second PCR round, indicates a non-typeable Hi (HiNT) (Fig. 2).

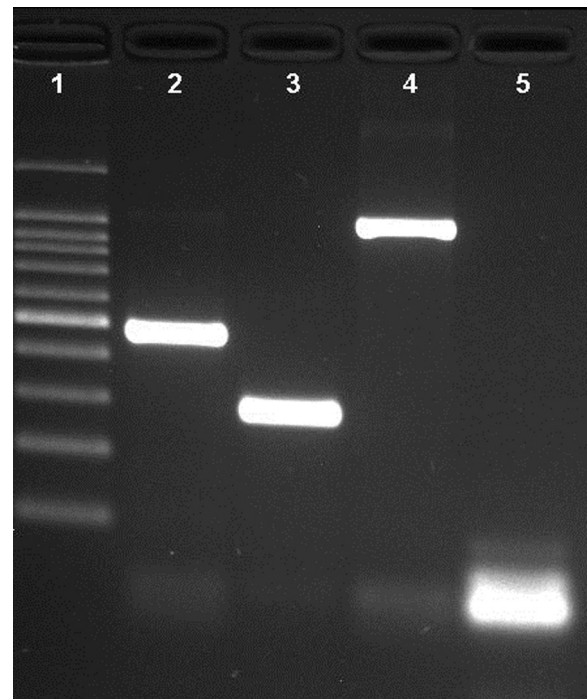
### Specificity

The specificity of the assay was assessed by testing a panel of non-Nm, Sp, or Hi strains, which included DNAs from nine pathogenic bacteria which may cause invasive disease with symptoms similar to those caused by the three target organisms. No amplification was observed after PCR with any of the microorganisms tested.

### Sensitivity

Uniplex and multiplex PCR using the primer sets and the commercial kit here described, showed positive amplification for at least one of the three targets with all the 110 clinical isolates of Nm, Sp, and Hi. For CSF and blood samples, the sensitivity of PCR for detecting bacterial meningitis or septicemia was

able to detect bacterial genomic DNA of all the 34 samples previously scored as positive and for additional 12 samples which were scored as negative after conventional laboratory tests giving a total of 46 (34.3%) PCR positive samples (Table 3).



**Fig. 1 – Agarose gel of a multiplex PCR showing the detection of the three pathogens from three different samples. Lane 1: 100 bp DNA ladder; lane 2: *Neisseria meningitidis* (*nspA* gene with 481 bp); lane 3: *Haemophilus influenzae* (*P6* gene with 273 bp); lane 4: *Streptococcus pneumoniae* (*ply* gene with 1000 bp); lane 5: negative control.**

**Table 3 – Sensitivity and specificity of primer sets.**

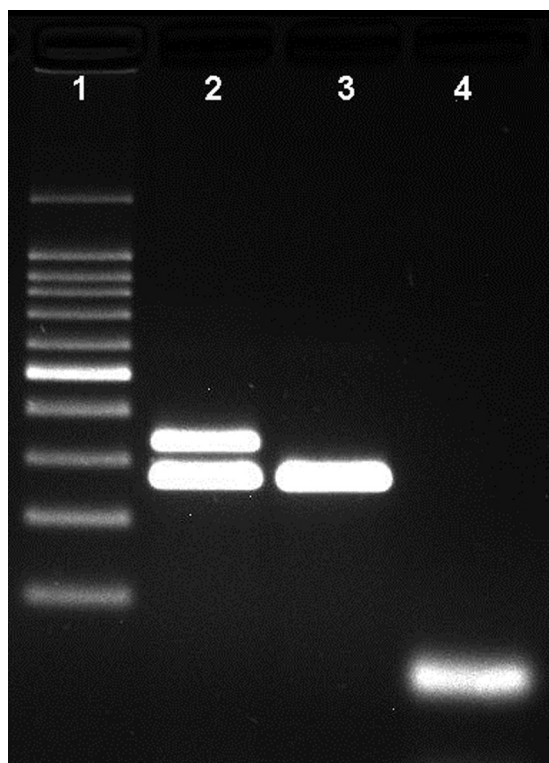
PCR primers		Positive samples by conventional tests/by PCR			PPV/NPV (%)
		Nm	Sp	Hi	
<i>Neisseria meningitidis</i>	[ <i>nspA</i> - 1/2	15/20 <sup>a</sup>	---	---	100/100
	[ <i>ctrA</i> - 617/727	15/20	---	---	100/100
	[ <i>crgA</i> - F/R	15/20	---	---	100/100
<i>Streptococcus pneumoniae</i>	[ <i>ply</i> - 894/974	---	12/16	---	100/100
	[ <i>ply</i> - 1/2	---	12/16	---	100/100
<i>Haemophilus influenzae</i>	[ <i>bexA</i> - 142/241	---	---	7/10	100/100
	[ P6 - F/R	---	---	7/10	100/100
Speed- oligo					
Nm		15/20	---	---	100/100
Sp		---	12/16	---	100/100
Hi		---	---	7/10	100/100
HiNT		---	---	7/10	100/100

PPV, Positive Predictive Value; NPV, Negative Predictive Value; Nm, *Neisseria meningitidis*; Sp, *Streptococcus pneumoniae*; Hi, *Haemophilus influenzae*.  
(a) total number of clinical samples tested for each agent: Nm n=20, Sp n=16, Hi n=10.

### Comparison of detection limits of single, multiplex, and commercial PCR methods

We have compared different primer sets for the detection of the three microorganisms on single and multiplexed reactions. PCR was carried out as a single or multiplexed reaction

performed with the sets of primers described in Table 1. For the commercial kit, the reactions were performed only as a single test (uniplex) for each pathogen as recommended by the producer. As it is shown in Table 2, conventional PCR test using primers targeting genes *nspA*,<sup>8</sup> *ply* (this study) and P6<sup>18</sup> were able to detect the lowest DNA dilutions of each specific target (36.8 fg/ $\mu$ L, 80 fg/ $\mu$ L and 100 fg/ $\mu$ L, respectively) both in the uniplex or multiplex approach. The commercial test SPEED OLIGO targeting genes *ctrA*, *lytA*, and *bexA* showed to be less sensitive than the conventional PCR test (Table 2).



**Fig. 2 – Agarose gel showing the differentiation of capsulated and non-capsulated *Haemophilus influenzae* strains. Lane 1: 100bp DNA ladder; lane 2: capsulated *H. influenzae* (*bexA* and P6 genes with 343 bp and 273 bp respectively); lane 3: non-capsulated *H. influenzae* (HiNT), (*bexA* gene with 343 bp); lane 4 negative control.**

### Discussion

Conventional PCR is still widely used as a straightforward laboratory test to detect specific DNA of different pathogens such as virus, bacteria, and protozoa from human or animal clinical samples. Several conventional PCR-based tests have been described for single or simultaneous detection of the most frequent bacterial agents causing invasive disease and meningitis in humans, namely *N. meningitidis*, *S. pneumoniae*, and *H. influenzae*.<sup>4-10</sup> Gene targets vary according to the microbial agent showing similar sensitivity and specificity. There are few commercial tests based on molecular strategies available for the detection of these pathogens. One of these tests is the Oligo Speed here compared to conventional PCR-based methods targeting different genes for each microbial agent. A great concern on this matter lately raised is the intra-strain gene polymorphism found within meningococcal strains as described on a study.<sup>20</sup> False-negative results by real-time PCR were described for the *ctrA* gene used as a diagnostic target. Our results show that the combination of specific primers targeting genes *nspA*, *ply*, and P6 on a multiplex approach was able to detect at least 10 gene copies of each bacterial agent.

Two variants of *H. influenzae* causing either invasive or non-invasive disease have been described. The most common is the capsulated Hi variant whose capsule is classified according to its polysaccharide structure into six different serotypes (a, b, c, d, e and f) which can be detected using PCR.<sup>19</sup> However,

this approach fails to identify non-capsulated strains since it is based on the amplification of a genetic capsule structure. The most common virulence factor of Hi strains is the capsule which helps the bacteria to evade the host immune system. Nevertheless, an increasing number of non-typeable strains has been reported causing different forms of disease<sup>21-23</sup> and the occurrence of these strains associated to invasive and non-invasive disease has been reported as a concern for new vaccines design.<sup>24,25</sup> van Ketel et al.<sup>18</sup> described an outer membrane protein (P6) which is exclusively found in all *H. influenzae* strains and it is not related to the presence of the capsule, being suitable to discriminate between capsulated and non-capsulated strains through a simple PCR. Failure to amplify the *bexA* gene and amplification of the P6 gene indicates a non-capsulated Hi strain. The single use of primers for the detection of the P6 gene would be sufficient for the detection of Hi strains, but this approach alone would not indicate if the strain is non-capsulated, an important information for epidemiologic surveillance after the introduction of the conjugated Hib vaccine. An additional PCR reaction is required targeting the *bexA* gene to determine if the strain is capsulated and in this case a serotype-specific PCR can be performed for serotype determination as described by Falla et al.<sup>19</sup> The inclusion of an additional PCR with primers targeting the Hi capsular gene *bexA* is important, since it can differentiate capsulated to non-capsulated Hi strains (NTHi) which has been considered as a potential emerging pathogen in countries where the conjugated vaccine against Hib has been introduced.<sup>21,24-29</sup>

An additional advantage of the multiplex system here described is that there is no possibility of misinterpretation of the specific bands with primer excess, which is frequently found below 100 bp, since the length of the shortest band is 273 bp for the *bexA* gene fragment and other bands are located at 343 bp (P6), 481 bp (*nspA*) and 1000 bp (*ply*). Other PCR-based methods use real-time PCR primers which may generate short-length amplicons with difficult preview by agarose gel electrophoresis.<sup>7,10</sup>

Sensitivity was assessed using clinical samples (CSF and whole blood) from culture-confirmed cases for one of the three organisms. Sensitivity for Nm, Sp, and Hi was 100% since all positive cases confirmed by culture gave positive PCR result. Furthermore, 12 samples associated to suspected cases were also scored positive by the multiplex PCR approach here described. It is likely that these samples were considered negative due to previous antibiotic treatment. The use of the novel multiplex PCR gave a total of 46 (34.3%) PCR positive samples (Table 3). These results showed how sensitive is the test when other phenotypic or epidemiological results indicate that the agent causing disease could be one of those three bacterial pathogens. Problems related to culture and isolation of these bacteria are frequently reported by several laboratories, where a specific and sensitive molecular test is crucial for the rapid and accurate identification of the disease causing agent.

Real-time PCR has been pointed as advantageous over conventional PCR due to its higher sensitivity and faster resolution since the result can be monitored during the run. However, real-time PCR does not appear to offer advantages when used by public laboratories for broad-range PCR testing a large number of samples. In fact, there may be disadvantages, such as need of trained technical staff, controlled

environment for assay setups, and higher cost of equipment and reagents. For public or private laboratories that still use conventional PCR to detect such pathogens, the choice for the best multiplex system is crucial to achieve accurate and reliable results. In the present study, we were able to compare several different primers combinations and gene targets recently described by different authors, with a commercial PCR-based test for the detection of the three agents. Our data show that the most sensitive and reliable combination of primers for a multiplex approach include the following targets: *nspA* gene for *N. meningitidis* generating a 481 bp amplicon,<sup>8</sup> *ply* gene for *S. pneumoniae* generating a 1000 bp amplicon (sequence described in this study), and P6 gene for *H. influenzae* generating a 273 bp amplicon.<sup>18</sup> For the discrimination between capsulated and non-capsulated strains of *H. influenzae*, an additional PCR is required, targeting the *bexA* gene generating a 343 bp amplicon,<sup>19</sup> when a positive amplification of the P6 gene is observed.

We believe that the standardization of conventional PCR-based tests for the detection of the invasive bacterial agents here described could improve, interoperability, reproducibility, and quality among different worldwide laboratories involved in routine clinical analysis.

---

## Funding

Financial support was provided by INCQS/FIOCRUZ and FAPERJ Proc.N.E26/110.761/2010.

---

## Conflicts of interest

The authors declare no conflicts of interest.

---

## Acknowledgments

The authors are grateful to the Sequencing core "Plataforma Genomica de Sequenciamento de DNA/PDTIS-FIOCRUZ". The study was approved by the local Ethics Committee.

---

## REFERENCES

1. Stephens DS. Biology and pathogenesis of the evolutionarily successful, obligate human bacterium *Neisseria meningitidis*. *Vaccine*. 2009;27 Suppl. 2:B71-7.
2. World Health Organization Communicable Disease Surveillance and Response. Laboratory methods for the diagnosis of meningitis caused by *Neisseria meningitidis*, *Streptococcus pneumoniae*, and *Haemophilus influenzae*. <http://www.who.int/csr/resources/publications/meningitis/WHO.CDS.CSR.EDC.99.7.EN/en/>. [Accessed 31.01.16].
3. Edmond K, Clark A, Korczak VS, Sanderson C, Griffiths UK, Rudan I. Global and regional risk of disabling sequelae from bacterial meningitis: a systematic review and meta-analysis. *Lancet Infect Dis*. 2010;10(May (5)):317-28.
4. Rådström P, Bäckman A, Qian N, Kragstjerg P, Pålsson C, Olcén P. Detection of bacterial DNA in cerebrospinal fluid by an assay for simultaneous detection of *Neisseria meningitidis*, *Haemophilus influenzae*, and streptococci using a seminested PCR strategy. *J Clin Microbiol*. 1994;32:2738-44.

5. Taha MK. Simultaneous approach for nonculture PCR-based identification and serogroup prediction of *Neisseria meningitidis*. *J Clin Microbiol*. 2000;38:855-7.
6. Saravolatz LD, Manzor O, VanderVelde N, Pawlak J, Belian B. Broad-range bacterial polymerase chain reaction for early detection of bacterial meningitis. *Clin Infect Dis*. 2003;36:40-5.
7. Tzanakaki G, Tsopanomichalou M, Kesanopoulos K, et al. Simultaneous single-tube PCR assay for the detection of *Neisseria meningitidis*, *Haemophilus influenzae* type b and *Streptococcus pneumoniae*. *Clin Microbiol Infect*. 2005;11:386-90.
8. de Filippis I, do Nascimento CR, Clementino MB, et al. Rapid detection of *Neisseria meningitidis* in cerebrospinal fluid by one-step polymerase chain reaction of the nspA gene. *Diagn Microbiol Infect Dis*. 2005;51:85-90.
9. Welinder-Olsson C, Dotevall L, Høgevik H, et al. Comparison of broad-range bacterial PCR and culture of cerebrospinal fluid for diagnosis of community-acquired bacterial meningitis. *Clin Microbiol Infect*. 2007;13:879-86.
10. Pedro LG, Boente RF, Madureira DJ, et al. Diagnosis of meningococcal meningitis in Brazil by use of PCR. *Scand J Infect Dis*. 2007;39:28-32.
11. Corless CE, Guiver M, Borrow R, Edwards-Jones V, Fox AJ, Kaczmarski EB. Simultaneous detection of *Neisseria meningitidis*, *Haemophilus influenzae*, and *Streptococcus pneumoniae* in suspected cases of meningitis and septicemia using real-time PCR. *J Clin Microbiol*. 2001;39:1553-8.
12. Mygind T, Birkelund S, Birkebaek NH, Østergaard L, Jensen JS, Christiansen G. Determination of PCR efficiency in chelex-100 purified clinical samples and comparison of real-time quantitative PCR and conventional PCR for detection of *Chlamydia pneumoniae*. *BMC Microbiol*. 2002;9:17.
13. Bryant PA, Li HY, Zaia A, et al. Prospective study of a real-time PCR that is highly sensitive, specific, and clinically useful for diagnosis of meningococcal disease in children. *J Clin Microbiol*. 2004;42:2919-25.
14. Øvstebø R, Brandtzaeg P, Brusletto B, et al. Use of robotized DNA isolation and real-time PCR to quantify and identify close correlation between levels of *Neisseria meningitidis* DNA and lipopolysaccharides in plasma and cerebrospinal fluid from patients with systemic meningococcal disease. *J Clin Microbiol*. 2004;42:2980-7.
15. Kais M, Spindler C, Kalin M, Ortqvist A, Giske CG. Quantitative detection of *Streptococcus pneumoniae*, *Haemophilus influenzae*, and *Moraxella catarrhalis* in lower respiratory tract samples by real-time PCR. *Diagn Microbiol Infect Dis*. 2006;55:169-78.
16. Carvalho Mda G, Tondella ML, McCaustland K, et al. Evaluation and improvement of real-time PCR assays targeting *lytA*, *ply*, and *psaA* genes for detection of pneumococcal DNA. *J Clin Microbiol*. 2007;45:2460-6.
17. Van Gastel E, Bruynseels P, Verstrepen W, Mertens A. Evaluation of a real-time polymerase chain reaction assay for the diagnosis of pneumococcal and meningococcal meningitis in a tertiary care hospital. *Eur J Clin Microbiol Infect Dis*. 2007;26:651-3.
18. van Ketel RJ, de Wever B, van Alphen L. Detection of *Haemophilus influenzae* in cerebrospinal fluids by polymerase chain reaction DNA amplification. *J Med Microbiol*. 1990;33:271-6.
19. Falla TJ, Crook DW, Brophy LN, Maskell D, Kroll JS, Moxon ER. PCR for capsular typing of *Haemophilus influenzae*. *J Clin Microbiol*. 1994;32:2382-6.
20. Jaton K, Ninet B, Bille J, Greub G. False-negative PCR result due to gene polymorphism: the example of *Neisseria meningitidis*. *J Clin Microbiol*. 2010;48:4590-1.
21. Bajanca P, Caniça M. Emergence of nonencapsulated and encapsulated non-b-type invasive *Haemophilus influenzae* isolates in Portugal (1989-2001). *J Clin Microbiol*. 2004;42:807-10.
22. Nelson KL, Smith AL. Determination of capsulation status in *Haemophilus influenzae* by multiplex polymerase chain reaction. *Diagn Microbiol Infect Dis*. 2010;66:235-40.
23. Rubach MP, Bender JM, Mottice S, et al. Increasing incidence of invasive *Haemophilus influenzae* disease in adults, Utah, USA. *Emerg Infect Dis*. 2011;17:1645-50.
24. Kalies H, Siedler A, Gröndahl B, Grote V, Milde-Busch A, von Kries R. Invasive *Haemophilus influenzae* infections in Germany: impact of non-type b serotypes in the post-vaccine era. *BMC Infect Dis*. 2009;9:45.
25. Campos J, Hernando M, Román F, et al. Analysis of invasive *Haemophilus influenzae* infections after extensive vaccination against *H. influenzae* type b. *J Clin Microbiol*. 2004;42:524-9.
26. Shuel M, Hoang L, Law DK, Tsang R. Invasive *Haemophilus influenzae* in British Columbia: non-Hib and non-typeable strains causing disease in children and adults. *Int J Infect Dis*. 2011;15:e167-73.
27. Adam HJ, Richardson SE, Jamieson FB, Rawte P, Low DE, Fisman DN. Changing epidemiology of invasive *Haemophilus influenzae* in Ontario, Canada: evidence for herd effects and strain replacement due to Hib vaccination. *Vaccine*. 2010;28:4073-8.
28. Van Wessel K, Rodenburg GD, Veenhoven RH, Spanjaard L, van der Ende A, Sanders EA. Nontypeable *Haemophilus influenzae* invasive disease in The Netherlands: a retrospective surveillance study 2001-2008. *Clin Infect Dis*. 2011;53:e1-7.
29. Naranjo L, Suarez JA, DeAntonio R, et al. Non-capsulated and capsulated *Haemophilus influenzae* in children with acute otitis media in Venezuela: a prospective epidemiological study. *BMC Infect Dis*. 2012;15:40.