

Efficacy and Safety of Radiofrequency Ablation Combined with Transcatheter Arterial Chemoembolization for Hepatocellular Carcinomas Compared with Radiofrequency Ablation Alone: A Time-to-Event Meta-Analysis

Xin Wang, PhD, Yanan Hu, PhD, Mudan Ren, MD, Xinlan Lu, PhD, Guifang Lu, PhD, Shuixiang He, PhD

All authors: Department of Gastroenterology, First Affiliated Hospital of Xi'an Jiaotong University, Xi'an, Shaanxi Province 710061, China

Objective: To compare the efficacy and safety of combined radiofrequency ablation (RFA) and transcatheter arterial chemoembolization (TACE) with RFA alone for hepatocellular carcinomas (HCC).

Materials and Methods: Randomized controlled trial (RCT) studies that compared the clinical or oncologic outcomes of combination therapy of TACE and RFA versus RFA for the treatment of HCC were identified through literature searches of electronic databases (Pubmed, Embase, Cochrane Library, China Biology Medicine disc, China National Knowledge Infrastructure, and Google Scholar). Hazard ratios (HRs) or odds ratios (ORs) with their corresponding 95% confidence interval (CI) were combined as the effective value to assess the summary effects. The strength of evidence was rated by the Grading of Recommendations Assessment, Development, and Evaluation system.

Results: Six RCTs with 534 patients were eligible for inclusion in this meta-analysis. The meta-analysis showed that the combination of TACE and RFA is associated with a significantly longer overall survival (HR = 0.62, 95% CI: 0.49–0.78, $p < 0.001$) and recurrence-free survival (HR = 0.55, 95% CI: 0.40–0.76, $p < 0.001$) in contrast with RFA monotherapy. The seemingly higher incidence of major complications in the combination group compared with RFA group did not reach statistical significance (OR = 1.17, 95% CI: 0.39–3.55, $p = 0.78$).

Conclusion: In patients with HCC, the combination of TACE and RFA is associated with significantly higher overall survival and recurrence-free survival, as compared with RFA monotherapy, without significant difference in major complications.

Index terms: Transcatheter arterial chemoembolization; Radiofrequency ablation; Hepatocellular carcinomas; Meta-analysis

INTRODUCTION

Hepatocellular carcinoma (HCC) is one of the most

Received March 15, 2015; accepted after revision September 8, 2015.

Corresponding author: Shuixiang He, PhD, Department of Gastroenterology, First Affiliated Hospital of Xi'an Jiaotong University, 277 Yanta West Road, Xi'an, Shaanxi Province 710061, China.

• Tel: (8629) 85323560 • Fax: (8629) 85323560
• E-mail: hesx123@126.com

This is an Open Access article distributed under the terms of the Creative Commons Attribution Non-Commercial License (<http://creativecommons.org/licenses/by-nc/3.0>) which permits unrestricted non-commercial use, distribution, and reproduction in any medium, provided the original work is properly cited.

common malignant tumors and a leading cause of cancer-related deaths worldwide. According to the latest statistics, 782500 new cases of HCC were diagnosed in 2012 and 745500 of them died with severe prognosis of a median overall survival time of less than a year after diagnosis and an overall survival of less than 5% (1). These data indicated that HCC is a serious health threat to human populations worldwide. Furthermore, < 30% of diagnosed HCC are suitable for curative therapies, such as surgical resection, liver transplantation, ethanol injection and radiofrequency ablation (RFA) (2). Because of the high recurrence rate and cancer mortality, the prognosis of HCC patients is even more discouraging.

Radiofrequency ablation has been widely accepted as an

effective curative therapy for small HCC and is reportedly the most effective percutaneous ablation technique because of the higher survival rates (3, 4). The complete response induced by RFA can provide a survival rate that is comparable to hepatic resection (5). Nevertheless, owing to the limited coagulative necrosis induced by RFA alone, the therapeutic effect of RFA in larger HCCs is unsatisfactory (6, 7). To deal with this problem and obtain a larger therapeutic region, many complementary therapies have been used in combination with RFA. Transcatheter arterial chemoembolization (TACE) is also widely used for unresectable HCC such as AsHCC, a type of malignant tumor with hypervascularity, due to its superiority over other therapies such as good tolerability, repeatability and precise targeting, especially for the intermediate-stage HCC (8, 9).

However, RFA and TACE have their own limitations. RFA is suitable for small tumors and it is difficult to achieve complete response in tumors > 5 cm. Furthermore, due to incomplete embolization or tumor angiogenesis, complete necrosis is barely induced by TACE alone. The combined use of TACE with RFA was previously reported and has shown a synergistic effect on ablation of HCC (10-13). Thus, the combination therapy reduces the local progression rate and leads to an improvement of both, the overall and the recurrence-free survival rate in HCC patients. Numerous studies have focused on whether TACE combined with RFA is more effective than RFA monotherapy, but the concluding evidence from these studies is difficult to apply in clinical practice due to conflicting outcomes and poor quality (14-17). On the other hand, combining data from suitable and eligible studies by meta-analysis has the advantage of reducing random error and obtaining precise estimates for clinical interventions. Hence, we performed this meta-analysis to compare the efficacy and safety of combined RFA and TACE with RFA alone for HCC.

MATERIALS AND METHODS

Literature Search

A comprehensive literature search was conducted in Pubmed, Embase, Cochrane Library, Chinese Biomedical Database (CBM), CNKI, and Google Scholar from their inception years to February 13, 2015 to identify relevant reports. The following combinations of search terms was used: ("hepatocellular carcinoma" or "hepatic cancer" or "hepatoma" or "liver cancer" or "liver tumor" or "cancer of liver" or "tumor of liver") and ("transcatheter

arterial chemoembolization" or "TACE" or "hepatic artery chemoembolization" or "transarterial chemotherapy embolization" or "transhepatic arterial chemoembolization" or "transarterial chemoembolization") and ("radiofrequency ablation" or "RFA"). Besides, "randomized controlled trials" or "RCT" was used. References cited in the relevant systematic reviews or meta-analyses were also checked for any potential, eligible studies. No other limits were imposed on this search.

Inclusion and Exclusion Criteria

All randomized controlled trials (RCT) comparing combination therapy of TACE and RFA versus RFA monotherapy for HCC and reporting at least one of the main outcomes analyzed in this meta-analysis were included, irrespective of the etiology of liver disease, differences in viral hepatitis, or cirrhotic status. Duplicates, letters to the editor, as well as studies that mixed other effective interventions in either treatment group or control group were excluded. Additionally, studies with inappropriate random method such as randomized according to admission date, admission number, birth date or patient preference were also excluded.

Data Extraction and Quality Assessment

Two authors independently screened the titles, abstracts and full texts to determine whether they met the inclusion criteria; the data was extracted from the eligible studies and assessed for quality. Discrepancies were resolved by discussion or by another author. The extracted contents included general study information (such as title, publication year, authors and country), characteristics of participants and diseases, interventions (such as patients' age and sex, type of study, sample size, interventions, Child-Pugh stage, tumor size, tumor stage, length of follow-up) and outcomes (overall survival, recurrence-free survival, major complications).

The methodological quality of the included studies was evaluated using the risk of bias tool suggested by the Cochrane Handbook for Systematic Reviews of Interventions (18). In addition, to evaluate the quality of evidence from the pooled results, the Grading of Recommendations Assessment, Development, and Evaluation system (GRADE system) was employed (19).

Statistical Analysis

For the time-to-event endpoints (overall survival,

recurrence-free survival), hazard ratio (HR) with its corresponding 95% confidence interval (CI) were combined as the effective value to assess the summary effects. The HRs and their 95% CIs were extracted explicitly from the included articles or calculated from the available numerical data using methods reported by Parmar et al. (20). A spreadsheet developed by Tierney et al. (21) was used to perform the calculations. In addition, for major complications, odds ratio (OR) with the 95% CI was calculated using the Mantel-Haenszel method. The chi-square (χ^2) was first calculated to assess the heterogeneity of the included studies and the degree of statistical heterogeneity was measured using I-squared statistics. The fixed-effect model was used to pool the results when $p > 0.05$ and $I^2 < 50\%$, indicating no substantial heterogeneity; otherwise, the random-effect model was applied (22). Furthermore, Begg's funnel plot was used to assess publication bias and sensitivity analyses were performed to determine the stability of the pooled effects. We excluded individual studies sequentially to ensure that no single study would be solely responsible for the significance of any result. All p values were 2-tailed, and p values of < 0.05 were regarded as significant. Statistical analyses were performed using Review Manager Software (RevMan 5.2; Cochrane Collaboration, Oxford, UK).

RESULTS

Study Selection and Characteristics

The search strategy initially resulted in a total of 563 studies. After screening the titles or abstracts, and retrieving for full texts when needed, 9 RCTs (16, 17, 23-29) met the inclusion criteria. However, 3 of these studies were excluded, of which, 1 was retracted from JAMA (29) and the other 2 had inappropriate random method (17, 28). Finally, the remaining 6 RCTs (16, 23-27) published between 2005 and 2013 with 534 patients were analyzed in this meta-analysis. The key characteristics of the 6 RCTs were outlined in Table 1. The risks of bias in these included RCTs were shown in Figure 1. Notably, double-blind techniques were often impractical because of the nature of the treatments and their possible adverse effects.

Overall Survival

All 6 RCTs including 534 patients provided overall survival information (16, 23-27). The result of the heterogeneity test was $p = 0.650/I^2 = 0\%$, indicating no heterogeneity

Table 1. Baseline Characteristics of RCTs Included in Meta-Analysis

Study	Year	Country	Treatment	No. of Patients	Age, yr (Mean ± SD)	Gender (M/F)	Tumor Size, cm (Mean ± SD)	Child-Pugh Class (A/B/C)	Length of Follow-Up (Months)	Chemotherapy Used in TACE
Peng et al. (23)	2013	China	TACE + RFA RFA alone	94 95	53.3 ± 11.0 55.3 ± 13.3	75/19 71/24	3.47 ± 1.44 3.39 ± 1.35	90/4/0 90/5/0	47.5 ± 11.3 47.0 ± 12.9	Carboplatin 300 mg, epirubicin 50 mg, and mitomycin 8 mg
Peng et al. (24)	2012	China	TACE + RFA RFA alone	69 70	57.5 ± 10.0 55.1 ± 9.5	60/9 55/15	2.1 ± 0.5 2.1 ± 0.4	60/9/0 59/11/0	39.2 ± 21.1 33.6 ± 24.9	Carboplatin 300 mg, epirubicin 50 mg, and mitomycin C 8 mg
Morimoto et al. (25)	2010	Japan	TACE + RFA RFA alone	19 18	70 (57-78) 73 (48-84)	15/4 12/6	3.6 ± 0.7 3.7 ± 0.6	18/1/0 16/2/0	30 (12-46) 32 (15-46)	Epirubicin hydrochloride (30-50 mg per body surface)
Shibata et al. (16)	2009	Japan	TACE + RFA RFA alone	46 43	67.2 ± 8.9 69.8 ± 8.0	31/15 33/10	1.7 ± 0.6 1.6 ± 0.5	32/14/0 33/10/0	30.4 ± 14.0 30.4 ± 14.0	Epirubicin hydrochloride 20-30 mg
Yang et al. (26)	2008	China	TACE + RFA RFA alone	24 12	59.1 ± 11.4 61.0 ± 10.4	18/6 8/4	6.6 ± 0.6 5.2 ± 0.4	11/5/1 8/6/1	- -	Epirubicin 30-50 mg hydroxycamptothecin 15-20 mg
Aikata et al. (27)	2006	Japan	TACE + RFA RFA alone	21 23	- -	- -	< 3 < 3	- -	- -	Cisplatinum

RCTs = randomized controlled trials, RFA = radiofrequency ablation, SD = standard deviation, TACE = transcatheter arterial chemoembolization

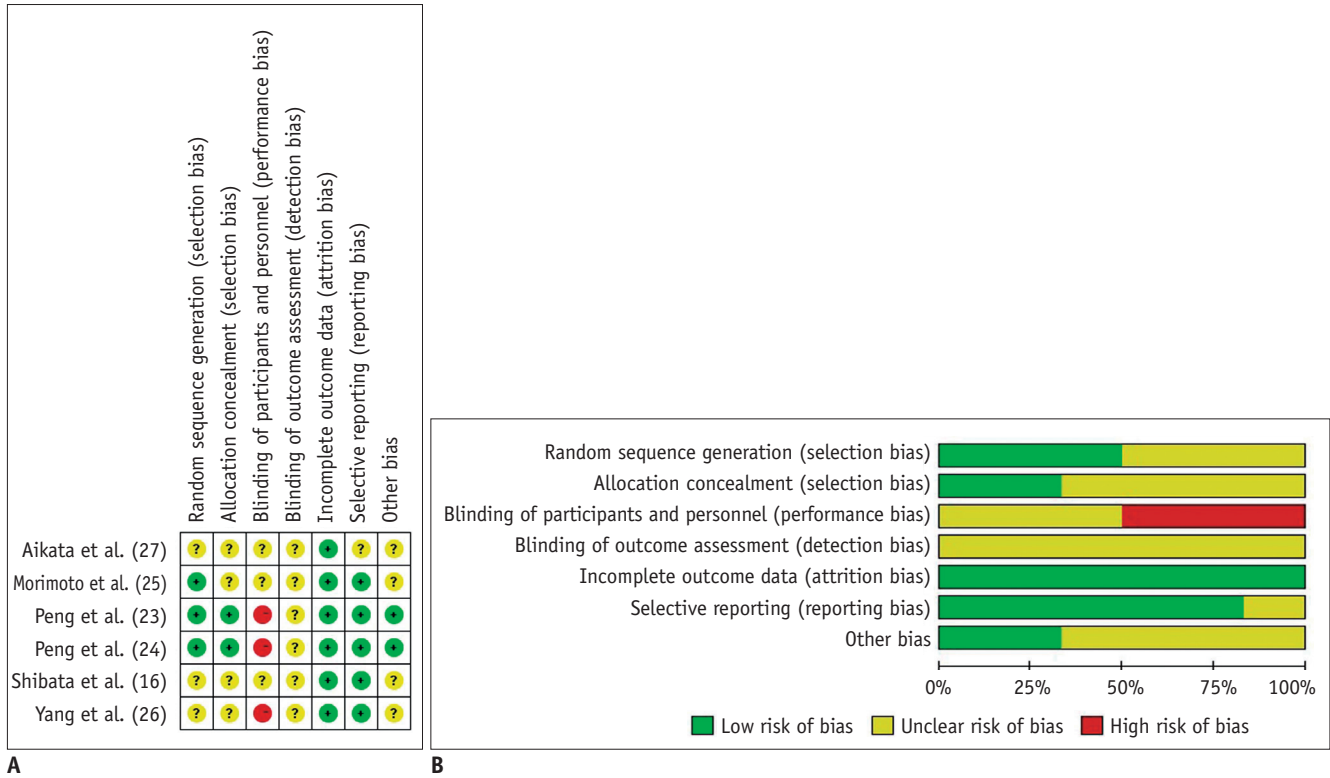


Fig. 1. Assessment of risk of bias in this meta-analysis.

A. Summary of risk of bias for each trial assessed by Cochrane Collaboration’s tool. **B.** Risk of bias graph about each risk of bias item presented as percentages across all included studies.

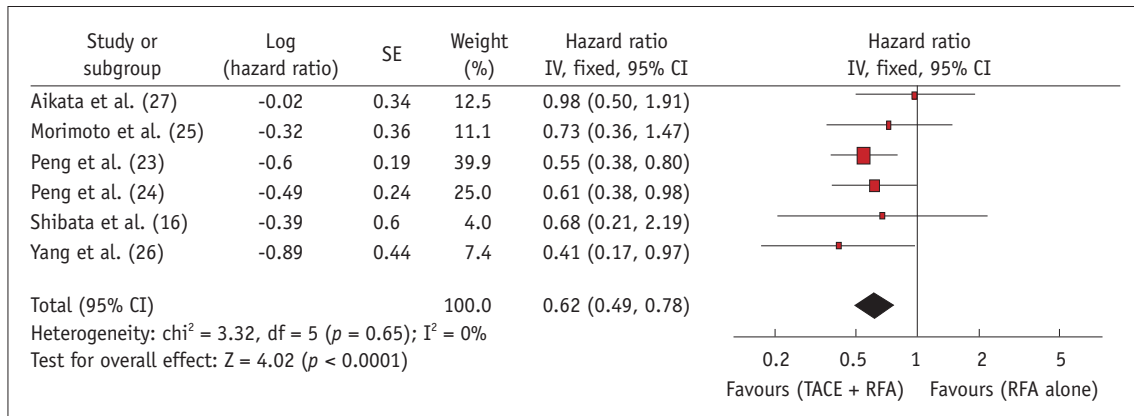


Fig. 2. Comparative OS in response to combination of RFA and TACE vs. RFA alone for HCC. All 6 randomized controlled trials including 534 patients provided OS information. Cumulative OS in TACE-RFA combined group was significantly longer than RFA alone group. CI = confidence interval, HCC = hepatocellular carcinomas, OS = overall survival, RFA = radiofrequency ablation, SE = standard error, TACE = transcatheter arterial chemoembolization

in overall survival between the studies. Therefore, the fixed-effect model was applied to pool the results. The cumulative overall survival in the TACE-RFA combined group was significantly longer than the RFA alone group (HR = 0.62, 95% CI: 0.49–0.78, $p < 0.001$) (Fig. 2). The specific information of overall survival in the first 5 years was summarized in Table 2.

Recurrence-Free Survival

Information on recurrence-free survival was available for 3 RCTs (16, 23, 24) with a total of 417 patients. Of the 4 studies, there was no obvious heterogeneity between studies ($p = 0.500/I^2 = 0\%$), thus the random-effect model was applied to pool the results. The meta-analysis demonstrated that RFA plus TACE therapy was associated with a significantly higher recurrence-free survival than RFA

monotherapy (HR = 0.55, 95% CI: 0.40–0.76, $p < 0.001$) (Fig. 3). The specific information of recurrence-free survival in the first 5 years was summarized in Table 2.

Major Complications

Five RCTs (16, 23-25, 27) with 498 patients investigated major complications. The result of the heterogeneity test was $p = 0.960/I^2 = 0\%$, indicating no heterogeneity between the studies. Hence, the fixed-effect model was used. The meta-analysis indicated that the combination group had a higher incidence of major complications, as compared with the monotherapy group, but the difference between these 2 groups was not statistically significant (OR = 1.17, 95% CI: 0.39–3.55, $p = 0.78$) (Fig. 4). The relevant data on complications reported in the RCTs were shown in Table 3.

Evidence of the Critical Outcomes

The GRADE system was used to synthesize and rate the evidence for the outcomes, and the quality of evidence was

summarized in Table 4. As a consequence of risk of bias, the overall quality of evidence for those outcomes was of moderate quality. Hence, further research is likely to have an important impact on the confidence in the estimate of effect and may change the current estimate.

Sensitivity Analysis and Publication Bias

Sensitivity analysis by sequential exclusion of individual studies did not alter the corresponding pooled results (Table 5). Hence, the results in this meta-analysis were validated as relatively stable and credible. The publication bias in this meta-analysis was assessed using funnel plot. All 6 eligible RCTs reported relative data on overall survival. The bilateral symmetry shaped funnel plot of overall survival indicated a lack of publication bias (Fig. 5).

DISCUSSION

Comparative effectiveness of RFA combined with TACE

Table 2. Prognosis Information Reported in Randomized Controlled Trials Included in Meta-Analysis

Study	Treatment	No.	Overall Survival Rate (%)					Recurrence-Free Survival Rate (%)				
			1-Year	2-Year	3-Year	4-Year	5-Year	1-Year	2-Year	3-Year	4-Year	5-Year
Peng et al. (23)	TACE + RFA	94	92.6	-	66.6	61.8	-	79.4	-	60.6	54.8	-
	RFA alone	95	85.3	-	59.0	45.0	-	66.7	-	44.2	38.9	-
Peng et al. (24)	TACE + RFA	69	94	-	69	-	46	80	-	45	-	40
	RFA alone	70	82	-	47	-	36	64	-	18	-	18
Morimoto et al. (25)	TACE + RFA	19	100	93	93	-	-	-	-	-	-	-
	RFA alone	18	89	89	80	-	-	-	-	-	-	-
Shibata et al. (16)	TACE + RFA	46	100	100	84.8	72.7	-	71.3	59.9	48.8	36.6	-
	RFA alone	43	100	-	-	-	-	74.3	52.4	29.7	29.7	-
Yang et al. (26)	TACE + RFA	24	68.3	-	-	-	-	-	-	-	-	-
	RFA alone	12	57.6	-	-	-	-	-	-	-	-	-
Aikata et al. (27)	TACE + RFA	21	95.2	95.2	84	-	-	-	-	-	-	-
	RFA alone	23	100	82.6	73.9	-	-	-	-	-	-	-

RFA = radiofrequency ablation, TACE = transcatheter arterial chemoembolization

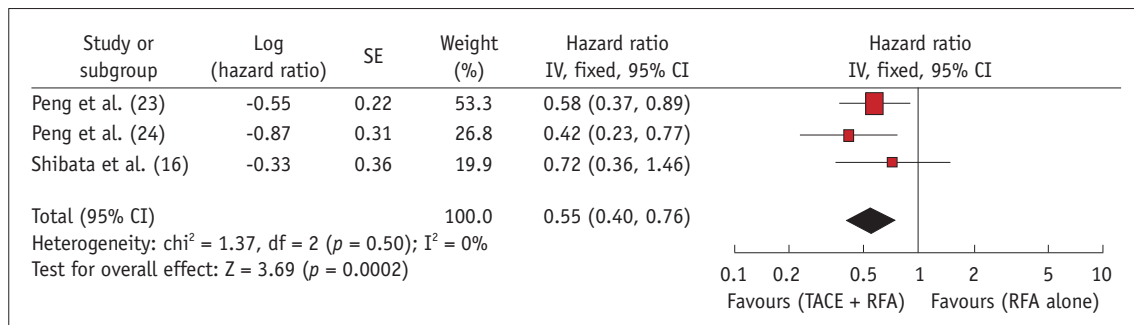


Fig. 3. Comparative RFS in response to combination of RFA and TACE vs. RFA alone for HCC. Meta-analysis demonstrated that RFA plus TACE therapy was associated with significantly higher RFS than that RFA monotherapy. CI = confidence interval, HCC = hepatocellular carcinoma, RFA = radiofrequency ablation, RFS = recurrence-free survival, SE = standard error, TACE = transcatheter arterial chemoembolization

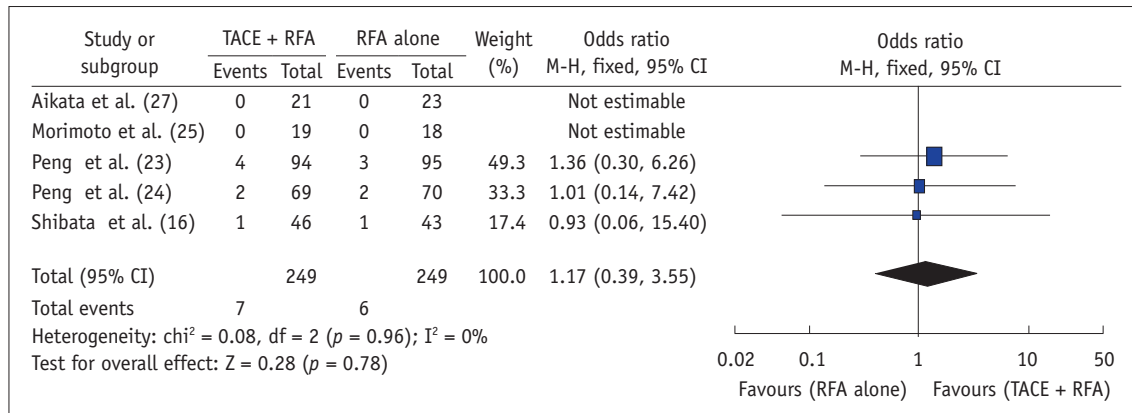


Fig. 4. Comparison of major complications in response to combination of RFA and TACE vs. RFA alone for HCC. Meta-analysis indicated that combination group had higher incidence of major complications, as compared with monotherapy group, but difference between these 2 groups had no statistical significance. CI = confidence interval, HCC = hepatocellular carcinoma, RFA = radiofrequency ablation, TACE = transcatheter arterial chemoembolization

Table 3. Relevant Data on Complications Reported in RCTs

Study	Major Complications*		Minor Complications*	
	TACE + RFA	RFA Alone	TACE + RFA	RFA Alone
Peng et al. (23)	Bile duct stenosis (n = 1), gastric hemorrhage (n = 1), severe ascites (n = 1), severe pleural effusion (n = 1)	Abdominal infection (n = 1), small intestinal obstruction (n = 1), severe pleural effusion (n = 1)	Pain (n = 57), fever (n = 33), vomiting (n = 44), mild ascites (n = 4), mild pleural effusion (n = 2), skin burn (n = 1)	Pain (n = 51), fever (n = 26), vomiting (n = 29), mild ascites (n = 4), mild pleural effusion (n = 1), skin burn (n = 1)
Peng et al. (24)	Moderate ascites (n = 1), liver failure (n = 1)	Severe ascites (n = 1), persistent jaundice (n = 1)	Fever (n = 27), pain required analgesics (n = 29), vomiting (n = 21)	Fever (n = 22), pain required analgesics (n = 25), vomiting (n = 2)
Morimoto et al. (25)	0	0	Pain (n = 1), other minor complications (n = 1)	Pain (n = 5), other minor complications (n = 2)
Shibata et al. (16)	Segmental hepatic infarction (n = 1)	Pseudoaneurysm and subcapsular hemorrhage (n = 1)	-	-
Aikata et al. (27)	0	0	-	-

*Major complications were defined as those that necessitated therapy with hospitalization or involved permanent adverse sequelae, including death. All other complications were considered to be minor. RCTs = randomized controlled trials, RFA = radiofrequency ablation, TACE = transcatheter arterial chemoembolization

vs. RFA alone for HCC has been addressed by numerous investigations but remains a controversial problem. However, most of the evidence from these studies is weak due to research methodology, small sample size or lack of concordance (14-16, 18, 30, 31). We performed a meta-analysis that included published RCTs to date, in order to obtain more precise estimates and define the effect of clinical interventions more precisely. The meta-analysis showed that the combination of TACE and RFA tends to be associated with significantly higher overall survival and recurrence-free survival than RFA monotherapy in

the treatment of HCC. However, there appears to be no significant differences between the combination of TACE and RFA and the RFA monotherapy, in terms of major complication. Despite the moderate overall quality of evidence for the outcomes due to risk of bias, it is notable that double-blind techniques were often impractical because of the nature of the treatments and their possible adverse effects.

Complete necrosis is reportedly achieved in more than 90% of small HCC nodules after RFA (32). Unfortunately, the effect of RFA is not optimistic for medium and large tumors,

Table 4. Strength of Evidence for Combination of RFA and TACE in Patients with HCC Compared with RFA Alone

Outcomes	Illustrative Comparative Risks* (95% CI)		Relative Effect (95% CI)	No. of Participants (Studies)	Quality of Evidence (GRADE)
	Assumed Risk	Corresponding Risk			
	RFA Alone	TACE + RFA			
Overall survival Follow-up Follow-up: 2 to 95 months	398 per 1000	270 per 1000 (220 to 327)	HR 0.62 (0.49 to 0.78)	534 (6 studies)	⊕⊕⊕⊖ Moderate [†]
Recurrence-free survival Follow-up Follow-up: 2 to 95 months	303 per 1000	180 per 1000 (134 to 240)	HR 0.55 (0.4 to 0.76)	417 (3 studies)	⊕⊕⊕⊖ Moderate [†]
Major complications Follow-up Follow-up: 2 to 95 months	24 per 1000	28 per 1000 (10 to 81)	OR 1.17 (0.39 to 3.55)	498 (5 studies)	⊕⊕⊕⊖ Moderate [†]

GRADE Working Group grades of evidence. High quality: further research is very unlikely to change our confidence in estimate of effect. Moderate quality: further research is likely to have important impact on our confidence in estimate of effect and may change estimate. Low quality: further research is very likely to have important impact on our confidence in estimate of effect and is likely to change estimate. Very low quality: we are very uncertain about estimate. *Basis for assumed risk (e.g., median control group risk across studies) is provided in footnotes. Corresponding risk (and its 95% CI) is based on assumed risk in comparison group and relative effect of intervention (and its 95% CI), [†]Unclear allocation concealment and random sequence generation, lack of blinding. CI = confidence interval, GRADE = Grading of Recommendations Assessment, Development, and Evaluation, HCC = hepatocellular carcinoma, HR = hazard ratio, OR = odds ratio, RFA = radiofrequency ablation, TACE = transcatheter arterial chemoembolization

Table 5. Results of Sensitivity Analysis by Sequentially Excluding Individual Studies

Omitted Study	HR (95% CI)	P	I ² (%)
None	0.62 (0.49, 0.78)	< 0.0001	0
Aikata et al. (27)	0.58 (0.45, 0.74)	< 0.0001	0
Morimoto et al. (25)	0.61 (0.47, 0.78)	< 0.0001	0
Peng et al. (24)	0.62 (0.47, 0.81)	0.0005	0
Peng et al. (23)	0.67 (0.49, 0.90)	0.009	0
Shibata et al. (16)	0.62 (0.48, 0.78)	< 0.0001	0
Yang et al. (26)	0.64 (0.50, 0.81)	0.0003	0

Forest plots for this sensitivity analysis are provided as online Supplementary Materials (in the online-only Data Supplement). CI = confidence interval, HR = hazard ratio

and local tumor progression frequently occurs in some HCC nodules in which RFA treatment is considered complete and technically successful. RFA and TACE in combination show synergistic effects; furthermore, TACE prior to RFA is beneficial for several reasons. Firstly, TACE can improve the effect of RFA thermal coagulation through reducing the cooling effect of hepatic blood flow. Secondly, TACE can lead to ischemic edema, which may enlarge the area of tumor necrosis induced by RFA. Thirdly, TACE can reduce the portal venous flow by filling the peripheral portal vein around the tumor, and prevent HCC patients from the portal vein invasion (33-35). Consequently, RFA can provide a better prognosis for HCC patients with the coordinated effects of TACE.

Of the RCTs included in our meta-analysis, Shibata et

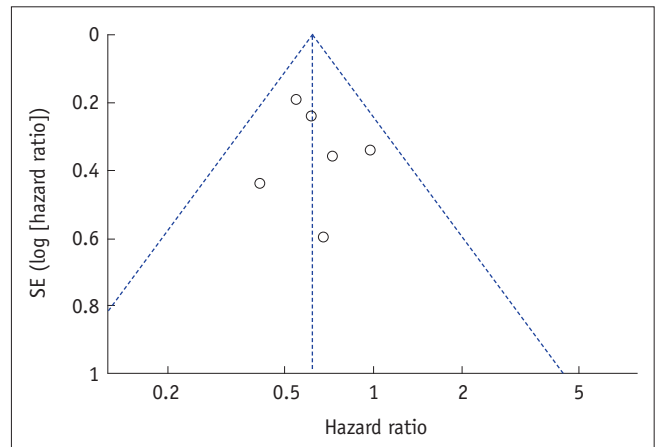


Fig. 5. Funnel plot of publication bias for OS. All 6 eligible randomized controlled trials reported relative data on OS. Funnel plot of OS shaped with bilateral symmetry indicated lack of publication bias. OS = overall survival, SE = standard error

al. (16) showed that combined RFA and TACE have overall survival rates and recurrence-free survival rates that are equivalent to RFA alone in patients with HCCs ≤ 3 cm. They concluded that the addition of TACE to RFA for HCCs ≤ 3 cm might not be necessary. Aikata et al. (27) also reported no significant difference in overall survival between the 2 groups in patients with HCCs < 3 cm. Morimoto et al. (25) showed identical overall survival in the combination treatment group among patients with intermediate-sized (3.1–5.0 cm) HCCs. At the same time, Peng et al. (23, 24) reported a positive result in overall survival and

recurrence-free survival among patients with HCCs < 5 cm or 7 cm. These different conclusions may be derived from different tumor size, etiologies of liver disease, multiple tumor lesions, liver function or some other reasons. None of these studies prompted significant difference in major complications between the combination of TACE and RFA and the RFA monotherapy.

Several previous meta-analyses showed the efficacy of TACE combined with RFA, as compared with RFA alone in patients with HCC (33, 36-42). Unfortunately, HRs were under-used in these meta-analyses when assessing time-to-event outcome such as overall survival and recurrence-free survival. Furthermore, the previous meta-analyses failed to consider that time-to-event outcomes have the following 2 important aspects i.e., event occurrence and the time at which the event occurs. ORs measure only the number of events but take no account of time of occurrence. Therefore, they are less appropriate for analyzing time-to-event outcomes, and can pose additional problems in a meta-analysis of time-to-event outcomes (21). We conducted the meta-analysis using HRs, which are considered to be the most appropriate method. The HRs summarizes the difference between 2 Kaplan-Meier curves and represents the overall reduction in the risk of death on treatment, as compared to control over the follow-up period (20, 43). Specifically, the HR is the odds that the time of survival is longer in patients treated with combined RFA and TACE, as compared to patients treated with RFA only. This implies that the time to the endpoint was increased by the addition of TACE. Furthermore, the GRADE system was applied to assess the quality of evidence summarized in our article and grade strength of recommendations for clinical scientists, which also failed to be used widely and properly in previous studies. Another difference from previous meta-analyses, was the inclusion of RCTs alone, in our article. Thus, the conclusions of the current meta-analysis were valid.

Our meta-analysis had some limitations. Firstly, the heterogeneity of the included studies caused by the inclusion criteria, the etiological factors of HCC, or other reasons might influence the consistency of effects and cause between-study heterogeneity, despite the lack of statistical evidence. Secondly, the safety of the combination of RFA and TACE was not fully assessed due to insufficient data obtained from the included studies, hence, only major complications were analyzed. Thirdly, we included studies that were available only in the abstract form (27), and the reported data may not be as accurate and complete as those

reported in the corresponding full text publication.

In conclusion, this meta-analysis suggested that the combination of TACE and RFA is associated with significantly higher overall survival and recurrence-free survival than RFA monotherapy in the patients with HCC without significant difference in major complication between them. These results need to be validated in RCTs with better quality and larger sample sizes.

Supplementary Materials

The online-only Data Supplement is available with this article at <http://dx.doi.org/10.3348/kjr.2016.17.1.93>.

REFERENCES

1. Torre LA, Bray F, Siegel RL, Ferlay J, Lortet-Tieulent J, Jemal A. Global cancer statistics, 2012. *CA Cancer J Clin* 2015;65:87-108
2. Sangiovanni A, Del Ninno E, Fasani P, De Fazio C, Ronchi G, Romeo R, et al. Increased survival of cirrhotic patients with a hepatocellular carcinoma detected during surveillance. *Gastroenterology* 2004;126:1005-1014
3. Shiina S, Teratani T, Obi S, Sato S, Tateishi R, Fujishima T, et al. A randomized controlled trial of radiofrequency ablation with ethanol injection for small hepatocellular carcinoma. *Gastroenterology* 2005;129:122-130
4. Lencioni R. Loco-regional treatment of hepatocellular carcinoma. *Hepatology* 2010;52:762-773
5. N'Kontchou G, Mahamoudi A, Aout M, Ganne-Carrié N, Grando V, Coderc E, et al. Radiofrequency ablation of hepatocellular carcinoma: long-term results and prognostic factors in 235 Western patients with cirrhosis. *Hepatology* 2009;50:1475-1483
6. Livraghi T, Goldberg SN, Lazzaroni S, Meloni F, Ierace T, Solbiati L, et al. Hepatocellular carcinoma: radiofrequency ablation of medium and large lesions. *Radiology* 2000;214:761-768
7. McGhana JP, Dodd GD 3rd. Radiofrequency ablation of the liver: current status. *AJR Am J Roentgenol* 2001;176:3-16
8. Idée JM, Guiu B. Use of Lipiodol as a drug-delivery system for transcatheter arterial chemoembolization of hepatocellular carcinoma: a review. *Crit Rev Oncol Hematol* 2013;88:530-549
9. Maluccio MA, Covey AM, Porat LB, Schubert J, Brody LA, Sofocleous CT, et al. Transcatheter arterial embolization with only particles for the treatment of unresectable hepatocellular carcinoma. *J Vasc Interv Radiol* 2008;19:862-869
10. Min JH, Lee MW, Cha DI, Jeon YH, Shin SW, Cho SK, et al. Radiofrequency ablation combined with chemoembolization for intermediate-sized (3-5 cm) hepatocellular carcinomas under dual guidance of biplane fluoroscopy and ultrasonography. *Korean J Radiol* 2013;14:248-258

11. Takaki H, Yamakado K, Uraki J, Nakatsuka A, Fuke H, Yamamoto N, et al. Radiofrequency ablation combined with chemoembolization for the treatment of hepatocellular carcinomas larger than 5 cm. *J Vasc Interv Radiol* 2009;20:217-224
12. Chang NK, Shin SS, Kim JW, Kim HJ, Jeong YY, Heo SH, et al. Effect of ultrasound-guided radiofrequency ablation in incompletely treated hepatocellular carcinoma after transcatheter arterial chemoembolization. *Korean J Radiol* 2012;13 Suppl 1:S104-S111
13. Kim JW, Shin SS, Kim JK, Choi SK, Heo SH, Lim HS, et al. Radiofrequency ablation combined with transcatheter arterial chemoembolization for the treatment of single hepatocellular carcinoma of 2 to 5 cm in diameter: comparison with surgical resection. *Korean J Radiol* 2013;14:626-635
14. Hu YQ. Radiofrequency ablation and transcatheter arterial chemoembolization in primary hepatic carcinoma. *Contemp Med* 2011;17:39-40
15. Tiong L, Maddern GJ. Systematic review and meta-analysis of survival and disease recurrence after radiofrequency ablation for hepatocellular carcinoma. *Br J Surg* 2011;98:1210-1224
16. Shibata T, Isoda H, Hirokawa Y, Arizono S, Shimada K, Togashi K. Small hepatocellular carcinoma: is radiofrequency ablation combined with transcatheter arterial chemoembolization more effective than radiofrequency ablation alone for treatment? *Radiology* 2009;252:905-913
17. Kang CB, Xu HB, Wang SL, Rui JA. Treatment of large hepatoma by TACE in combination with RFA. *Zhonghua Gandan Waike Zazhi* 2007;13:828-830
18. Higgins JP, Altman DG, Gøtzsche PC, Jüni P, Moher D, Oxman AD, et al. The Cochrane Collaboration's tool for assessing risk of bias in randomised trials. *BMJ* 2011;343:d5928
19. Guyatt GH, Oxman AD, Vist GE, Kunz R, Falck-Ytter Y, Alonso-Coello P, et al. GRADE: an emerging consensus on rating quality of evidence and strength of recommendations. *BMJ* 2008;336:924-926
20. Parmar MK, Torri V, Stewart L. Extracting summary statistics to perform meta-analyses of the published literature for survival endpoints. *Stat Med* 1998;17:2815-2834
21. Tierney JF, Stewart LA, Ghersi D, Burdett S, Sydes MR. Practical methods for incorporating summary time-to-event data into meta-analysis. *Trials* 2007;8:16
22. Higgins JPT, Green S. Cochrane Handbook for Systematic Reviews of Interventions Version 5.0.2. The Cochrane Collaboration Web site. <http://www.cochrane-handbook.org>. Published September 2009
23. Peng ZW, Zhang YJ, Chen MS, Xu L, Liang HH, Lin XJ, et al. Radiofrequency ablation with or without transcatheter arterial chemoembolization in the treatment of hepatocellular carcinoma: a prospective randomized trial. *J Clin Oncol* 2013;31:426-432
24. Peng ZW, Zhang YJ, Liang HH, Lin XJ, Guo RP, Chen MS. Recurrent hepatocellular carcinoma treated with sequential transcatheter arterial chemoembolization and RF ablation versus RF ablation alone: a prospective randomized trial. *Radiology* 2012;262:689-700
25. Morimoto M, Numata K, Kondou M, Nozaki A, Morita S, Tanaka K. Midterm outcomes in patients with intermediate-sized hepatocellular carcinoma: a randomized controlled trial for determining the efficacy of radiofrequency ablation combined with transcatheter arterial chemoembolization. *Cancer* 2010;116:5452-5460
26. Yang P, Liang M, Zhang Y, Shen B. Clinical application of a combination therapy of lentinan, multi-electrode RFA and TACE in HCC. *Adv Ther* 2008;25:787-794
27. Aikata H, Shirakawa H, Takaki S, Uka K, Miki D, Yamashina K, et al. Radiofrequency ablation combined with transcatheter arterial chemoembolization for small hepatocellular carcinomas. *Hepatology* 2006;44:494A
28. Lin JJ, Wu W, Jiang XF, Jin XJ, Lu LJ, Bao LW. [Clinical outcomes of radiofrequency ablation combined with transcatheter arterial chemoembolization for the treatment of hepatocellular carcinoma: a single-center experience]. *Zhonghua Zhong Liu Za Zhi* 2013;35:144-147
29. Cheng BQ, Jia CQ, Liu CT, Fan W, Wang QL, Zhang ZL, et al. Chemoembolization combined with radiofrequency ablation for patients with hepatocellular carcinoma larger than 3 cm: a randomized controlled trial. *JAMA* 2008;299:1669-1677
30. Shen SQ, Xiang JJ, Xiong CL, Wu SM, Zhu SS. Intraoperative radiofrequency thermal ablation combined with portal vein infusion chemotherapy and transarterial chemoembolization for unresectable HCC. *Hepatogastroenterology* 2005;52:1403-1407
31. Wang YB, Chen MH, Yan K, Yang W, Dai Y, Yin SS. [Quality of life of primary hepatocellular carcinoma patients after radiofrequency ablation]. *Ai Zheng* 2005;24:827-833
32. Shibata T, Shibata T, Maetani Y, Isoda H, Hiraoka M. Radiofrequency ablation for small hepatocellular carcinoma: prospective comparison of internally cooled electrode and expandable electrode. *Radiology* 2006;238:346-353
33. Jiang G, Xu X, Ren S, Wang L. Combining transarterial chemoembolization with radiofrequency ablation for hepatocellular carcinoma. *Tumour Biol* 2014;35:3405-3408
34. Goldberg SN, Girnan GD, Lukyanov AN, Ahmed M, Monsky WL, Gazelle GS, et al. Percutaneous tumor ablation: increased necrosis with combined radio-frequency ablation and intravenous liposomal doxorubicin in a rat breast tumor model. *Radiology* 2002;222:797-804
35. Seki T, Tamai T, Nakagawa T, Imamura M, Nishimura A, Yamashiki N, et al. Combination therapy with transcatheter arterial chemoembolization and percutaneous microwave coagulation therapy for hepatocellular carcinoma. *Cancer* 2000;89:1245-1251
36. Ni JY, Liu SS, Xu LF, Sun HL, Chen YT. Meta-analysis of radiofrequency ablation in combination with transarterial chemoembolization for hepatocellular carcinoma. *World J Gastroenterol* 2013;19:3872-3882
37. Lu Z, Wen F, Guo Q, Liang H, Mao X, Sun H. Radiofrequency ablation plus chemoembolization versus radiofrequency ablation alone for hepatocellular carcinoma: a meta-analysis

- of randomized-controlled trials. *Eur J Gastroenterol Hepatol* 2013;25:187-194
38. Kong QF, Jiao JB, Chen QQ, Li L, Wang DG, Lv B. Comparative effectiveness of radiofrequency ablation with or without transarterial chemoembolization for hepatocellular carcinoma. *Tumour Biol* 2014;35:2655-2659
39. Yan S, Xu D, Sun B. Combination of radiofrequency ablation with transarterial chemoembolization for hepatocellular carcinoma: a meta-analysis. *Dig Dis Sci* 2012;57:3026-3031
40. Yan S, Xu D, Sun B. Combination of radiofrequency ablation with transarterial chemoembolization for hepatocellular carcinoma: a meta-analysis. *Dig Dis Sci* 2013;58:2107-2113
41. Wang W, Shi J, Xie WF. Transarterial chemoembolization in combination with percutaneous ablation therapy in unresectable hepatocellular carcinoma: a meta-analysis. *Liver Int* 2010;30:741-749
42. Liu Z, Gao F, Yang G, Singh S, Lu M, Zhang T, et al. Combination of radiofrequency ablation with transarterial chemoembolization for hepatocellular carcinoma: an up-to-date meta-analysis. *Tumour Biol* 2014;35:7407-7413
43. Spruance SL, Reid JE, Grace M, Samore M. Hazard ratio in clinical trials. *Antimicrob Agents Chemother* 2004;48:2787-2792