



OPEN

Multiple bouts of high-intensity interval exercise reverse age-related functional connectivity disruptions without affecting motor learning in older adults

Brian Greeley^{1,3}✉, Briana Chau^{2,3}, Christina B. Jones^{2,3}, Jason L. Neva^{4,5}, Sarah N. Kraeutner^{1,3}, Kristin L. Campbell^{1,2} & Lara A. Boyd^{1,2,3}

Exercise has emerged as an intervention that may mitigate age-related resting state functional connectivity and sensorimotor decline. Here, 42 healthy older adults rested or completed 3 sets of high-intensity interval exercise for a total of 23 min, then immediately practiced an implicit motor task with their non-dominant hand across five separate sessions. Participants completed resting state functional MRI before the first and after the fifth day of practice; they also returned 24-h and 35-days later to assess short- and long-term retention. Independent component analysis of resting state functional MRI revealed increased connectivity in the frontoparietal, the dorsal attentional, and cerebellar networks in the exercise group relative to the rest group. Seed-based analysis showed strengthened connectivity between the limbic system and right cerebellum, and between the right cerebellum and bilateral middle temporal gyri in the exercise group. There was no motor learning advantage for the exercise group. Our data suggest that exercise paired with an implicit motor learning task in older adults can augment resting state functional connectivity without enhancing behaviour beyond that stimulated by skilled motor practice.

The global population is aging¹. Given that sensorimotor decline accompanies aging^{2,3}, there is growing interest in interventions that mitigate these changes in older adults. Data from studies of young adults suggest that exercise can enhance cortical excitability and may improve motor learning. Following a single bout of exercise, transcranial magnetic stimulation measures show changes in intracortical circuit excitability^{4,5} in young adults. Similarly, 20 min of high-intensity interval exercise, determined by a high percentage (75–90%) of workload taken from a separate maximal exercise stress test, preceding motor practice enhances motor learning in young adults, regardless of the motor task^{6–8}. However, the majority of research investigating the impact of high-intensity interval exercise has focused on healthy young individuals; no previous work has considered whether pairing skilled motor practice with high-intensity interval exercise will impact motor learning in older adults.

As the limbic system is impacted by both chronic^{9,10} and single, 20 min bout of exercise¹¹, motor learning tasks that engage these brain regions may also be enhanced following exercise. For example, 3 days of aerobic exercise per week over the course of 1 year, increases the size of the hippocampus, which leads to improvements in spatial memory in older adults⁹. A month of exercise enhances learning along with hippocampal neurogenesis in aged mice¹², and is neuroprotective in both the hippocampus and amygdala in young mice^{13,14}. Functional magnetic resonance imaging (fMRI) studies also support the role of the limbic system in learning, with the hippocampi engaged in both explicit and implicit motor learning in older adults¹⁵. Taken together, the limbic system appears to be positively impacted by aerobic exercise which in turn may facilitate motor learning.

Exercise may mitigate age-related decreases in resting state functional connectivity (FC), but whether changes in FC are accompanied by motor learning in older adults is unknown. Resting state FC is a neuroimaging

¹Department of Physical Therapy, University of British Columbia, Vancouver V6T1Z3, Canada. ²Graduate Program in Rehabilitation Sciences, University of British Columbia, Vancouver V6T1Z3, Canada. ³UBC MRI Research Centre, University of British Columbia, Vancouver V6T2B5, Canada. ⁴École de kinésiologie et des sciences de l'activité physique, Faculté de médecine, Université de Montréal, Montreal, QC H3C3T5, Canada. ⁵Centre de recherche de l'institut universitaire de gériatrie de Montréal, Montreal, QC H3T1P1, Canada. ✉email: brian.greeley@ubc.ca

method that captures the temporal coherence of spatially distinct brain regions at rest. Age-related decreases in FC networks have been well documented, especially in the default mode network (DMN)^{16–20}. Moreover, age-related decreases in FC may have functional significance; the weaker the FC within the DMN relates to poorer executive function, slower processing speed¹⁷ and poorer memory performance^{20,21}. It is possible that exercise mitigates age-related FC decreases within the DMN. For example, Weng et al.⁴⁰ found that older adults displayed increases in FC between the hippocampus and the medial prefrontal cortex immediately following a 30 min bout of exercise, and Voss et al.¹⁹ reported an increase in FC between the posterior cingulate cortex and frontal medial cortex and the posterior cingulate cortex and middle temporal gyrus after 6 months of a walking intervention. Importantly, Voss et al.¹⁹ found no benefit of exercise on a battery of cognitive measures in older adults, suggesting that exercise may have the capacity to mitigate age-related FC disruptions, especially for brain regions within the DMN but may not always affect behaviour.

Here, healthy older adults practiced an implicit motor sequence task following a bout of high-intensity interval exercise in five separate sessions. Additionally, participants completed MRI scans before and after the intervention to assess FC. We hypothesized that the participants in the exercise group would show a greater change in both motor skill acquisition and motor learning at the retention tests compared to the rest group. We also hypothesized that those in the exercise, but not the rest group, would display FC increases in networks and brain regions typically disrupted with age including the DMN and limbic brain regions.

Methods

Participants. Forty-four participants were recruited from Vancouver, British Columbia or the greater Vancouver area. Twenty participants were randomly assigned to the exercise group (9 males; mean age 68.3 years old), whereas 22 participants were randomly assigned to the rest group (5 males; mean age 65.2 years old). We recruited both left and right handed individuals; handedness was determined using the Edinburgh Handedness Scale²². Demographic information was collected verbally during the first session. Usual physical activity levels were assessed using the Godin Leisure Time Physical Activity questionnaire²³ and collected during the first session (Table 1). Participants were healthy with no reported neurological disorders and screened for any potential contraindications to MRI using standard screening forms. The Clinical Research Ethics Board at the University of British Columbia approved all protocols, and all methods were performed in accordance with relevant guidelines and regulations.

Study design. Participants reported to the laboratory for a total of 11 sessions. During the session 1, participants provided consent and completed a cardiologist supervised maximally graded stress test. All participants, regardless of group assignment, were cleared by a licensed cardiologist. In session 2, participants underwent a baseline MRI that included T1 anatomy and resting state scans. Participants were then pseudo-randomized, accounting for age and sex using a custom computer program, to an “exercise” or “rest” condition. In sessions 3 and 10 neurophysiology was assessed using transcranial magnetic stimulation (unpublished). In sessions 4 through 8, participants either watched a nature documentary or exercised for 23 min before completing 4 blocks of a complex, implicit motor sequence learning task (see Serial targeting task below). To allow for muscle recovery between each exercise session, we scheduled approximately two practice sessions per week, which is a feasible recommendation and in line with current aerobic exercise guidelines²⁴. Session 9 contained a 24-h retention assessment where participants completed 1 block of the motor task to assess short-term motor learning and underwent their second resting state scan (post-intervention scan). Thirty-five days after session 9, participants returned to complete a retention test composed of 1 block of the motor task to assess long-term motor learning (Fig. 1). The purpose of the 35-day retention session was to assess the long-term impact of exercise on motor learning.

Stress test. All participants completed a cardiologist supervised maximally graded stress test during their first visit. In addition to ensuring that all participants were safe to exercise, data from the stress test were used to determine the participant’s high-intensity workload for training sessions. Participants were instructed to refrain from engaging in vigorous physical activity for 24 h prior and not to eat a large meal 2 h before to their scheduled test. Once participants arrived, they provided informed consent, and a list of current medications and past medical history (if applicable). Electrocardiogram leads were then placed on the participant’s chest which was wirelessly transmitted and saved to a computer. After approximately 3 min resting in supine, heart rate and blood pressure were recorded. Next, participants were seated on a recumbent bike (SciFit). The participant’s feet were secured used two Velcro straps and the seat distance and height was adjusted for each participant, so that the knee was flexed approximately between 25 and 45° during full leg extension and that the participant was comfortable during cycling. Heart rate was monitored continuously throughout the stress test and recorded once every minute. Blood pressure was taken manually by a cardiology technologist every other minute. Rate of perceived exertion (RPE)²⁵ was obtained once every minute. Participants were instructed to generate their power from their legs, keep their arms and hands relaxed, and maintain between 50 and 80 revolutions per minute (RPM). The stress test began with a 2-min warm-up at 10 watts. Then resistance was increased every minute thereafter. Depending on the last reported RPE, heart rate, and blood pressure, wattage was increased either by 5, 10, or 15 based on current stress test recommendations²⁶. The stress test was terminated if the participant stopped pedaling or if RPMs dropped below 50 and continued to decline for more than five seconds. RPE at test termination was collected. After the termination of the stress test, participants cooled down between 2 and 3 min at 10 watts. After the cool down, participants laid down and rested between 1 and 5 min until heart rate and blood pressure returned to baseline.

	ID	Age (years)	Gender	MOCA	Edinburgh	Pre Godin	Post Godin	Resting HR (bpm)	Peak HR (bpm)	Resting BP (mmHg)	Max output (W)
Rest	1	74.7	M	24	100		91		147		120
	2	60.6	F	29	90	56	58	48	153	110/70	100
	3	70.4	F	29	100		49	90	132	114/70	70
	4	67.6	F	29	85	108	91	82	176	156/88	90
	5	62.9	F	30	100	102	101	69	157	112/72	125
	6	58.3	F		80	72	74	74	157	102/68	160
	7	69.1	F	27	- 80	48	77	57	122	110/70	65
	8	67.7	F	26	100	66	66	55	124	125/75	65
	9	63.5	F	30	100	40	48	60	116	100/70	80
	10	73.7	F	26	100	65	46	79	143	115/70	70
	11	67.9	M	28	60	21	31	68	115	155/80	110
	12	59.0	F	29	100	110	101	64	171	120/80	125
	13	59.3	F	28	94.7	45	42	85	159	115/80	55
	14	65.5	M	27	81.8	66	101	54	156	125/70	120
	15	61.4	F	30	81.8	57	60	90	168	115/80	90
	16	66.8	M	23	63.6	24	36	58	151	145/85	105
	17	77.5	F	29	100	39	76	80	123	120/70	50
	18	71.1	F	29	40	56	50	76	151	110/75	90
	19	57.5	F	27	60	101	110	65	155	100/70	110
	20	52.9	M	27	- 62.5	28	71	75	174	160/90	180
	21	58.3	F	27	78.9	45	55	59	143	105/70	70
	22	68	F	28	100	63	69	72	150	110/76	80
Mean		65.2	5 M/17 F	28	71.5	61	68	70	147	120/75	97
Exercise	1	51.6	M	27	70	58	80	45	158	134/26	160
	2	85.5	M		80	48		53	136	110/58	100
	3	74.3	F	26	100	44	32	69	157	114/70	80
	4	68.1	F	28	100		5	61	153	120/70	100
	5	76.3	F	24	100	75	92	54	129	124/76	60
	6	61.4	M	29	47	95	56	96	183	128/80	110
	7	79.0	M	24	89	147	119	66	133	120/80	90
	8	76.3	F	28	80	65	78	59	142	122/76	65
	9	63.6	F	30	100	40	40	60	116	110/70	80
	10	63.0	F	28	100	41	64	85	139	150/80	75
	11	73.6	F	30	80	111	78	61	107	100/70	80
	12	62.0	M	25	80	24	41	71	148	130/80	105
	13	59.0	M	29	100	92	40	59	160	105/70	150
	14	51.4	F	22	60	31	59	82	164	105/70	80
	15	62.9	F	27	90	0	0	63	185	125/75	65
	16	72.0	M	25	100	22	29	55	135	115/70	110
	17	77.2	M	27	100	3	0	69	153	150/90	80
	18	63.4	M	30	100	90	90	56	169	105/70	210
	19	76.3	F	28	- 100	68	36	60	129	150/85	60
Mean		68.3	9 M/10 F	27	78	59	52	64	147	122/72	99

Table 1. Participant demographic table. Resting heart rate (HR), peak HR, resting blood pressure (BP), and max output in watts (W) are values taken from the stress test. Blank fields indicate missing data

Intervention. *Exercise.* For each practice session, participants in the exercise group completed a bout of high-intensity interval exercise on a stationary recumbent bicycle (SciFit). An exercise session consisted of a warm-up and three equal repetitions of high-intensity exercise interleaved with active recovery. Participants were asked to pedal at 50 to 80 RPM throughout each exercise session. First, participants completed a 5-min warm-up, cycling at 10 watts. Following warm-up, participant completed 3 sets of 3-min high-intensity bouts of exercise (at 75% of max power output as determined from the stress test), interspersed with 3-min of active recovery (at 10 watts)^{6,27}. Heart rate was monitored using the Alpha 53p watch (Mio, Portland) and recorded at the last minute of every interval: namely at the end of warm up (5 min), first high-intensity bout (8 min), first active recovery bout (11 min), second high-intensity bout (14 min), second active recovery bout (17 min), the third high-intensity bout (20 min), and last active recovery bout (23 min).

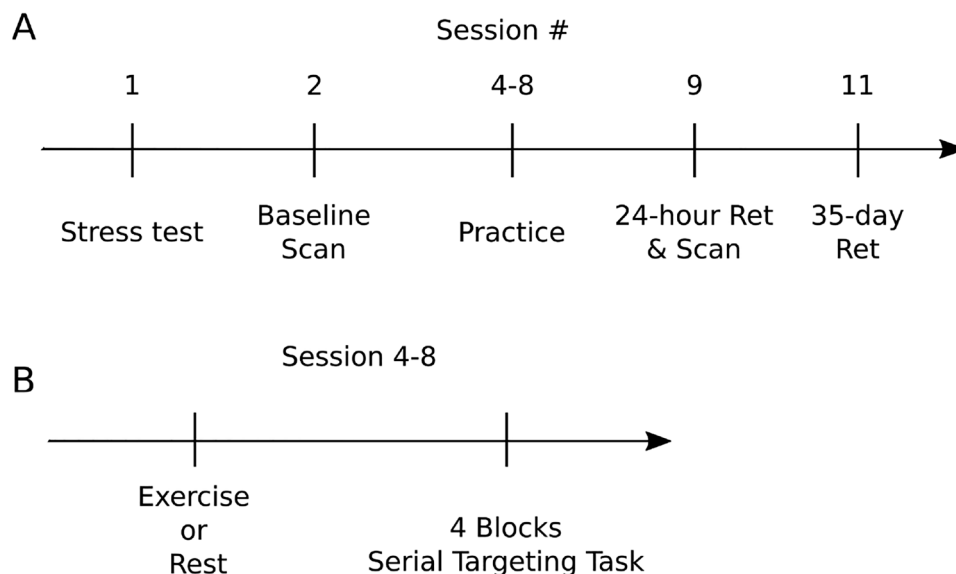


Figure 1. Experimental design of: (A) the entire study and (B) an exercise or rest practice session. Regardless of group, all participants completed a maximally graded stress in session 1. Session 2 and 3 contained baseline a assessment of the motor task and a MRI resting state scan, respectively. In sessions 4–8 participants either watched 23 min of a nature documentary or underwent 23 min of high-intensity interval exercise before practicing the implicit motor task. Session 9 contained the 24-h, short-term retention test to assess motor learning and post-training MRI session. Session 11 included the 35 day, long-term retention test.

Rest. Participants assigned to the rest group sat for 23 min while watching a nature documentary (Planet Earth) during each practice session (equivalent to total duration to complete the warm and interval sessions). Heart rate was recorded at the same time intervals as the exercise group.

Serial targeting task. Skilled motor practice took place using a KINARM end-point robot (BKIN Technologies Ltd, Kingston, ON, Canada). Participants were seated in the KINARM chair which was adjusted so that the individual's head was positioned in the center of the visual field. Participants grasped one of the end-point handles using their non-dominant hand (Fig. 2A). The non-dominant arm was used to increase the overall difficulty of the task. A bib was placed over the front of the participant which occluded vision of their arm and hand.

Motor performance and learning were assessed using the serial targeting task (STT)^{6,28,29}, an implicit motor sequence task. Targets were displayed on the participant's non-dominant side of the KINARM workspace (Fig. 2A). In the task there were a total of nine targets. One center target, and eight peripheral targets that formed an equidistant circular array of a 10 cm radius. Each circular target had a radius of 1.14 cm (Fig. 2B).

To begin the task, participants used their non-dominant arm to reach to a red center target. To initiate the appearance of the next target, participants had to hold a white cursor, which represented the position of their hand, within the current red target for 500 ms, after which the current target turned green and simultaneously the next red target appeared (Fig. 2C). Participants had 10,000 ms to reach to each target. Cursor position was sampled at 1000 Hz. Before each practice session, participants were instructed to move to each target as quickly and accurately as possible, making sure not to over- or undershoot the target. On practice day 1, participants were briefly exposed to the task (pre-test) which contained 20 trials; this took approximately 30 s. On each of the 5 training days, participants performed 4 blocks, or 444 movements, immediately following exercise or rest (according to group assignment). Motor learning was assessed both in the short- and long-term by two no-exercise or no-rest retention tests made up of 1 block of the STT. Short-term retention was assessed 24-h after the last day of practice and long-term retention was assessed 35 days after the last day of practice.

Unbeknownst to the participants, the STT contained a repeated sequence which was embedded between sequences of random movements. We included both random and repeated sequences to distinguish between motor learning (repeated sequences) and motor performance (random sequences) as well as keep learning implicit. Including random sequences and contrasting the two provides a specific measure of skill and reduces contamination of factors like stimulus–response mapping, fatigue and motivation³⁰. Also, the removal of random sequences would have likely resulted in explicit learning and would have allowed participants to anticipate the targets, resulting in a ceiling effect in reaction time. Additionally, there is evidence that an interleaved practice structure enhances consolidation for older adults³¹. Participants were exposed to the same, 6-element sequence across practice sessions. Behavioural change in motor performance of repeated sequences reflects implicit motor learning whereas change in random sequence performance reflects motor control^{6,32}. Thus, participants were exposed to a repeating 6-element sequence, which was flanked by 7 targets that appeared at random. The order of the 6-element repeating sequence was: 8, 5, 9, 4, 2, 6, 7 (Fig. 2B). Random sequences were never repeated but appeared in the same order across practice for all participants. Within any one block of practice, and regardless

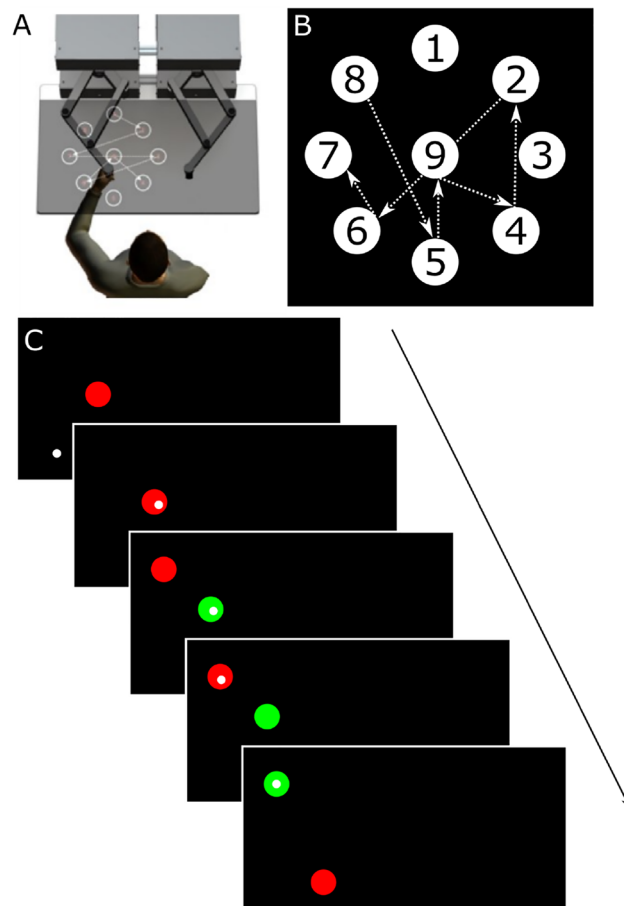


Figure 2. Set-up and schematic overview of the serial targeting task. The serial targeting task was practiced on (A) an endpoint KINARM robot immediately following 23 min of rest or high-intensity interval exercise. Participants used their non-dominant arm to control a frictionless lever to move to illuminated targets as quickly and accurately as possible. (B) Numbered targets displayed represent all targets in the workspace. The order of the embedded repeated target sequence is represented by the dotted arrows. Note, participants only saw 2 targets at any given time (when not next in the sequence the targets were not displayed) and targets were *not* numbered during the task. (C) The task began with the appearance of a red center target with a small white circle representing the participant's non-dominant hand position in real time (top). A red target stayed on the screen until the participant moved and held the white dot (i.e., their hand) in the red target for 500 ms, after which a new red target appeared and the current red target turned green simultaneously. This process repeated until participants completed one block (a total of 111 movements, 48 of which belong to a 6-element repeated target sequence). A total of 4 blocks were completed during each practice session. All targets are presented on the non-dominant side of the participant's workspace.

of the practice session, repeating sequence trials were always displayed in the following trial order: trial 8–13, 21–26, 34–39, 47–52, 60–65, 73–78, 86–91, 99–104. Thus, participants were exposed to 32 repetitions of the repeating sequence within one practice session (8 times per block, 4 blocks of practice; 192 trials). Within any block of practice, random sequence trials were always displayed in the following trials: 1–7, 14–20, 27–33, 40–46, 53–59, 66–72, 79–85, 92–98, 105–111. Thus, participants were exposed to 36 random sequences within a single practice session.

Explicit awareness. Explicit awareness was assessed during retention sessions. Following the 24-h retention test, participants were shown a series of 10 sequence movies displayed on the KINARM screen and asked to verbally decide ("Yes" or "No") if they recognized each one. Three of the 10 were "true" repeating sequences (same as the repeated practice pattern); 7 were foils. Individuals who identified both the repeated and random sequences at a better than chance (i.e., 2 of 3 repeated sequences identified correctly and 4 of 7 novel, random sequences identified as not having been seen before), were considered to have gained explicit awareness^{33,34}.

Neuroimaging. *MRI acquisition and data processing.* Structural and functional brain images were acquired using a Philips Elition 3.0 T MRI scanner housed in the Djavad Mowafaghian Centre for Brain Health at the University of British Columbia. First, a T1 structural scan with the following parameters: TR=8.1 ms,

TE = 3.61 ms, flip angle = 8°, field of view = 256 × 256, 165 slices, 1 × 1 × 1 mm thickness, was completed. Resting state scans were collected in the same scanning sessions and were acquired using two single shot echo planar imaging sequence with the following parameters: TR = 2000 ms, TE = 30 ms, flip angle = 90°, voxel dimension = 3 × 3 × 3 mm, 1 mm gap, 36 slices, field of view = 240 × 143 × 240 mm, for a total imaging time of 4.2 min for each scan. During the two scans totaling 8.4 min, participants were asked to look at a fixed target and to think of nothing in particular.

Resting-state fMRI preprocessing was completed using Statistical Parametric Mapping (SPM 8, University College London, London, UK). A standard pre-processing protocol of realignment, slice-timing correction, outlier detection, segmentation and normalization were used. The realigned functional images were warped into the normalized Montreal Neurological Institute (MNI) EPI template, resampled into 2 × 2 × 2 mm³ resolution. Finally, the normalized images were smoothed with a Gaussian kernel at 6 mm.

Functional connectivity analysis. Analysis of FC was carried out using CONN v.19c³⁵, a functional connectivity toolbox. The white matter and cerebrospinal fluid time series were decomposed into principal components using the CompCor method³⁶, which were regressed out of the total fMRI signal. Five principal components were used for the white matter and the cerebrospinal fluid. Residual head movement parameters (six for rotation and translation parameters, and another six parameters representing their first-order temporal derivatives, outliers identified by ART) were regressed out before analysis. Time points with excessive motion (> 0.9 mm), or where a global signal changed by above five standard deviations, were defined as outliers and “scrubbed,” and removed from analysis. Resting state data were band-pass filtered (0.008–0.09 Hz).

Independent component analysis. After denoising, group-level independent component analysis (ICA) was implemented across all participants through Calhoun’s group-level fast ICA approach which first performs the ICA, then those components are back projected to individual subject ICA maps and then entered into the second-level analysis³⁷. The number of independent components was set to 20^{38,39} and dimensionality reduction was set to 64 to detect resting-state networks³⁷. Independent components corresponding to resting-state networks were visually identified and confirmed with the spatial correlation of the independent components with the CONN functional atlas. Each group-level spatial map was compared to CONN’s default networks file. Components that were identified as representing intrinsic networks had correlation coefficients between $r = 0.3$ and $r = 0.5$. Thus, the overlap between CONN’s default network maps and the ICA produced relatively high correlation coefficients. A contrast for intervention group ([− 1 1]) and time point ([1 − 1]) were performed on each ICA to understand network differences between the rest and exercise group between pre and post scanning sessions. Voxel threshold was uncorrected $p < 0.001$ and cluster threshold was FWE corrected $p < 0.05$.

Seed-to-voxel analysis (regions of interest). As previous results have demonstrated changes in FC in brain regions associated with the DMN and limbic system after exercise^{19,40}, we chose 8 brain regions of interest (ROIs) that comprise of the limbic system and were available in the CONN toolbox. The CONN toolbox uses parcellations derived from the Harvard–Oxford Cortical atlas for cortical and subcortical regions⁴¹ and the AAL atlas for cerebellar areas⁴². The ROIs chosen included bilateral anterior division of parahippocampal gyrus, bilateral posterior division of parahippocampal gyrus, bilateral hippocampus, bilateral amygdala. In a follow-up analysis, we also included an additional 14 cerebellar ROIs, which included bilateral lobules 1–10 based on initial seed-to-voxel results from the hippocampus and amygdala. First-level analysis was performed using a weighted general linear model, hemodynamic response function weighting, and bivariate correlation, CONN’s default. For second-level analysis, a voxel threshold was performed at an uncorrected level ($p < 0.001$) and a family wise error (FWE) correction was applied at the cluster level ($p < 0.05$).

Data analysis. All statistical analyses were carried out using SPSS software (SPSS 19.0; IBM Corporation, Armonk, NY). All data was tested for normality with the Shapiro–Wilk test with alpha 0.001⁴³. A Mann–Whitney U (non-parametric test) was run to assess differences in explicit awareness.

Similar to Boraxbekk et al.⁴⁴, each participant’s physical fitness was calculated as a composite z-score taken from five measures (blood pressure: diastolic and systolic at rest, resting heart rate, pre Godin score, and max watts achieved during the stress test) collected at baseline. Each variable was separately z-transformed and then averaged into a composite z-score. Variables with higher values that may indicate poorer physical fitness (diastolic, systolic, and resting heart rate) were multiplied by − 1. Thus, the greater positive value of the composite z-score indicated greater physical fitness. The composite score was used as a covariate for all analyses.

Reaction time (RT), the time of movement onset after the start of a trial was used to measure motor acquisition and learning. Additionally, cumulative magnitude (CM), the sum of the square root ($X^2 + Y^2$), where X^2 and Y^2 is the absolute value of the derivative of all X and Y coordinates within a trial of the moving hand, respectively was used to understand whether exercise affected movement efficiency. The first trial (always comprised of 7 reaches and random) as well as any reaches equal to or exceeding 1000 ms in reaction time and their neighboring reaches that comprised the same trial were removed from analysis. Values for RT and CM were obtained for each target and movement and were averaged across 7 movements for the random sequence or 6 movements for the repeated sequence.

Averaged trial RT and CM were then calculated separately as ratios relative to the averaged pre-test for the corresponding trial sequence type (e.g., averaged pre-test random trial/first random trial in practice). Thus, higher ratios indicated greater change during acquisition and characterized motor learning at the retention tests. Ratios for each sequence type were averaged across the four blocks of practice for each day for each participant. The ratios from each sequence type were used in two separate mixed-model analysis of variance (ANOVA) (one

Period	Heart rate	RPE
Rest	73.5 (10.6)	
Warm-up	84.7 (12.6)	1.3 (0.8)
HITT 1	114.1 (17.8)	4.3 (1.7)
Recovery 1	102.7 (94.7)	1.7 (0.9)
HITT 2	117.3 (21.1)	4.6 (1.5)
Recovery 2	95.8 (15.6)	1.8 (0.9)
HITT 3	120.5 (24.0)	4.7 (1.7)
Recovery 3	98.8 (16.7)	1.7 (1.0)

Table 2. Mean heart rate and rate of perceived exertion (SD) averaged across the 5-day intervention for the exercise group.

for RT and CM) with target type (random, repeated) and day (practice day 1–5) being within-subjects factors and group (exercise, rest) as the between-subjects factor. Pairwise post-hoc analyses were Bonferroni adjusted. Separate one-way repeated measures ANOVAs were used to understand group differences in motor learning for the short- and long-term retention tests.

Results

Of the 44 participants recruited, two participants' behavioural data (both from exercise) were omitted from analysis: one was discarded because of technical issues that occurred during the motor learning task, whereas data from another participant was discarded because of outliers (3 SD from the mean). One participant from the exercise group and one participant from the rest group were classified as moderately active (14–23) and 2 participants from the rest group were considered sedentary (< 14)⁴⁵. All other participants were classified as active (≥ 24 on Godin). A sum of the raw pre- and post-intervention Godin scores and participant demographics are reported in Table 1. Heart rate and RPE scores averaged across exercise periods (e.g., warm-up, high-intensity period 1, active recovery period 1, etc.) for the exercise group are displayed in Table 2. All participants completed the rest or exercise protocol with no adverse effects. One participant from the exercise group did not undergo the post-intervention MRI scan due to claustrophobia. Two participants did not come back for the 35-day retention due to scheduling conflicts and 4 participants (2 from exercise, 2 from rest) were excluded from 35-day retention analysis as the number of days between the 24-h retention and 35-day retention was greater than 2 standard deviations from the mean. Three participants (all from the exercise group) had no behavioural data and were not included in behavioural analyses. A repeated measures ANOVA was used to determine whether there were differences in the number of days between practice sessions. On average there were 3.76 days between each practice session (exercise group range: 2.0–6.8, rest group range: 2.0–5.5 days) but no main effect of time, no differences between the groups, and no day by group interaction. There was an average of 34.0 days between the 24-h retention and 35-day retention (exercise group range: 26–39, rest group range: 28.0–48 days). There was no difference between the number of days between the 24-h retention session and the 35-day retention session for the two groups.

Resting-state functional connectivity (rs-fMRI): exercise greater than rest, post greater than pre. *Functional connectivity (ICA) networks group effects.* Of the twenty components, three showed significant increases in the exercise group relative to the rest group. The exercise group displayed greater functional connectivity changes between cerebellar, frontal-parietal, and dorsal attentional networks and bilateral putamen (Table 3). Relative to the rest group and the pre time point, the exercise group showed increased connectivity from the cerebellar network to the left putamen (Fig. 3a). Similarly, the exercise group displayed an increase in FC between the frontoparietal network and the left frontal pole and left middle frontal gyrus (Fig. 3b) and between the dorsal attentional network and right putamen and right insular cortex (Fig. 3c).

Functional connectivity (seed-based) group effects. Positive contrasts revealed increased FC between brain regions that link the limbic system and the cerebellum (Table 3). Specifically, the exercise group also displayed a greater change in FC between the left hippocampus and R crus1 and lobule 6 of the cerebellum (Fig. 4 blue-green) and between the left amygdala and the right crus2 and crus1 of the cerebellum (Fig. 4 red-yellow).

To further explore the role of exercise on resting state FC in the cerebellum, we included 14 ROIs. Seed-to-voxel Analysis revealed enhanced FC limited to the right lobule 9 and 10 seed regions of the cerebellum. The exercise group displayed increased FC between the right lobule 9 of the cerebellum and right middle temporal gyrus (Fig. 5a), and between the right lobule 10 of the cerebellum and bilateral middle temporal gyri, left inferior temporal gyrus, and left superior temporal gyrus (Fig. 5B).

Behavioural data. All dependent variables (RT, CM) were normally distributed for both the exercise and rest groups ($p > 0.001$). A total of 276 movements (0.3% of total movements) were considered outliers (>1000 ms). One hundred and twenty-one of those movements (81 random) were from the exercise group and 155 movements (107 random) were from the rest were group.

	<i>k</i>	p-FWE	T	Clusters (x,y,z)	Region
ICA					
Cerebellum	130	0.015	5.57	-18 -2 -22	L putamen, L Amygdala
Frontoparietal	174	0.002	6.27	-38 38 24	L FP, L MFG
Dorsal attentional	194	<0.001	7.56	22 24 -8	R putamen, R IC
Seed-to-voxel					
L hippocampus	95	0.04	4.76	18 -72 -24	R crus1, R lobule 6
L amygdala	254	<0.001	5.21	24 -76 -34	R crus2, R crus1
R lobule 9	132	0.011	5.58	68 -30 -2	R MTG, R ITG
R lobule 10	254	<0.001	5.69	-56 -52 -06	L MTG, L ITG
	113	0.019	5.49	64 -44 -8	R MTG
	107	0.025	5.16	-54 -24 -6	L MTG, L STG

Table 3. Significant ICA and seed-to-voxel positive contrasts exercise > rest, post > pre. FP: frontal pole; FWE: family wise error; IC: insular cortex; ITG: inferior temporal gyrus; *k*: spatial extent (voxel); MFG: middle frontal gyrus; MTG: middle temporal gyrus; SMG: supramarginal gyrus; STG: superior temporal gyrus.

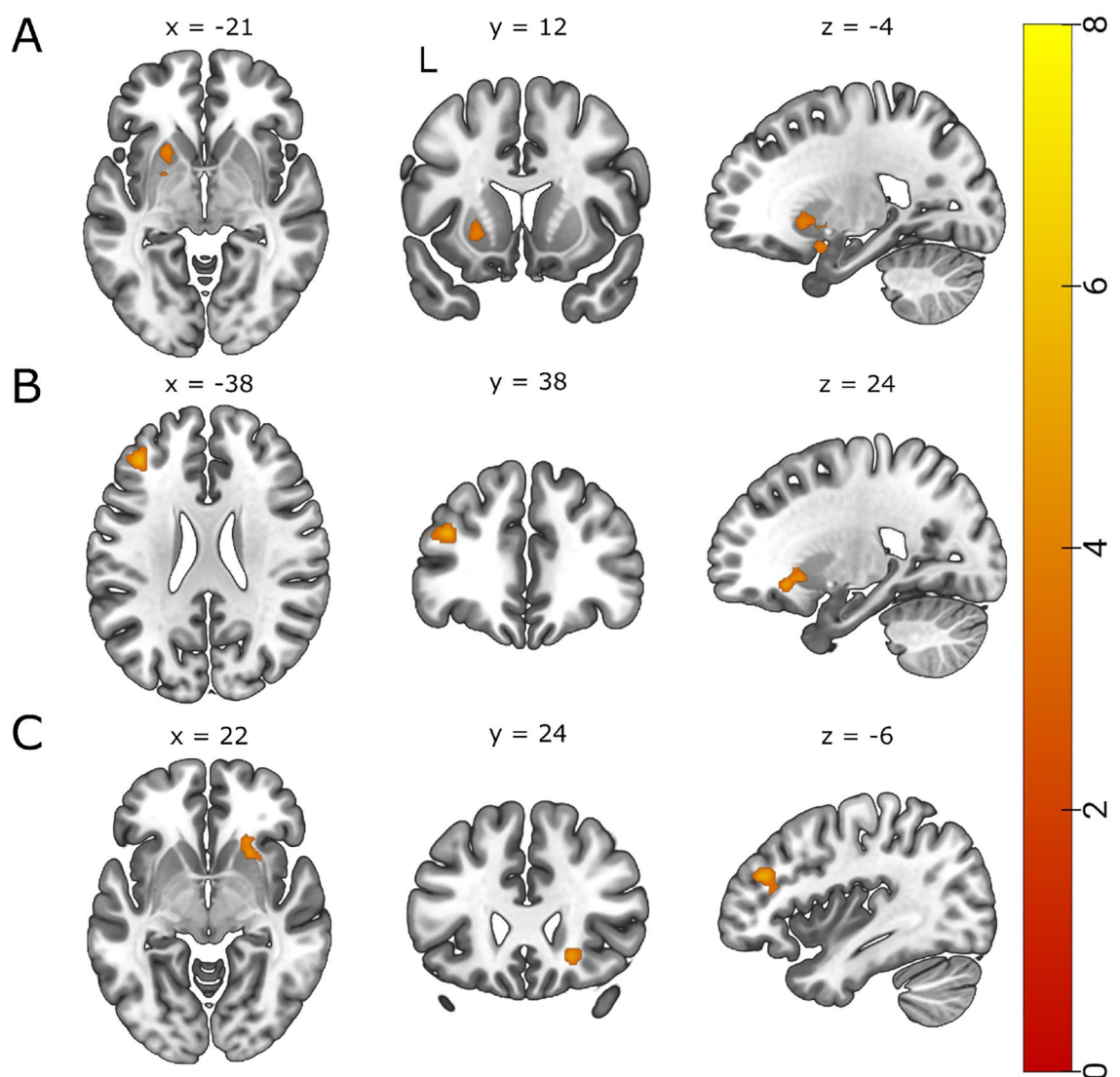


Figure 3. *t* statistical map from ICA exercise > rest, post > pre. Slice views of significant peaks (cluster threshold $p < 0.05$ FWE-corrected, $p < 0.001$ uncorrected at voxel level) that emerged between (A) the cerebellar network and left putamen ($T(39) > 5.57$, $k = 130$, $p\text{-FWE} = 0.015$), (B) the frontoparietal network and left frontal pole and middle frontal gyrus ($T(39) = 6.27$, $k = 174$, $p\text{-FWE} = 0.002$) and (C) the dorsal attentional network and right putamen ($T(39) = 7.56$, $k = 194$, $p < 0.001$).

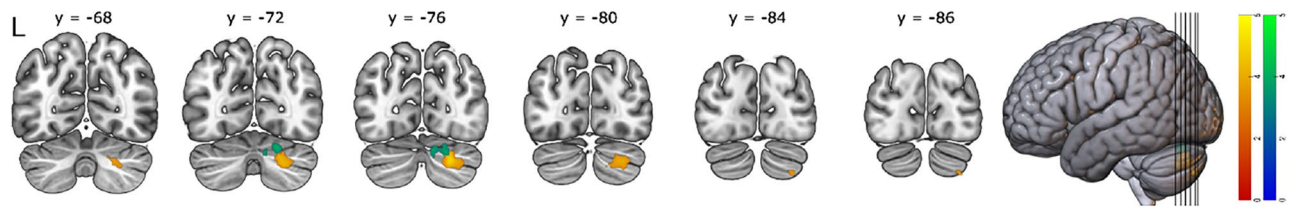


Figure 4. *t* statistical map from seed-to-voxel exercise > rest, post > pre. Slice views of significant peaks (cluster threshold $p < 0.05$ FWE-corrected, $p < 0.001$ uncorrected at voxel level) using the left hippocampus (blue-green) and left amygdala (red-yellow) as seed regions. Increased connectivity observed between the left hippocampus (seed) and the right crus I and lobule 6 of the cerebellum (blue-green) ($T = 4.76$, $k = 95$, p -FWE = 0.040) and between the left amygdala (seed) and the right crus I and II of the cerebellum (red-yellow) ($T = 5.21$, $k = 254$, p -FWE < 0.001).

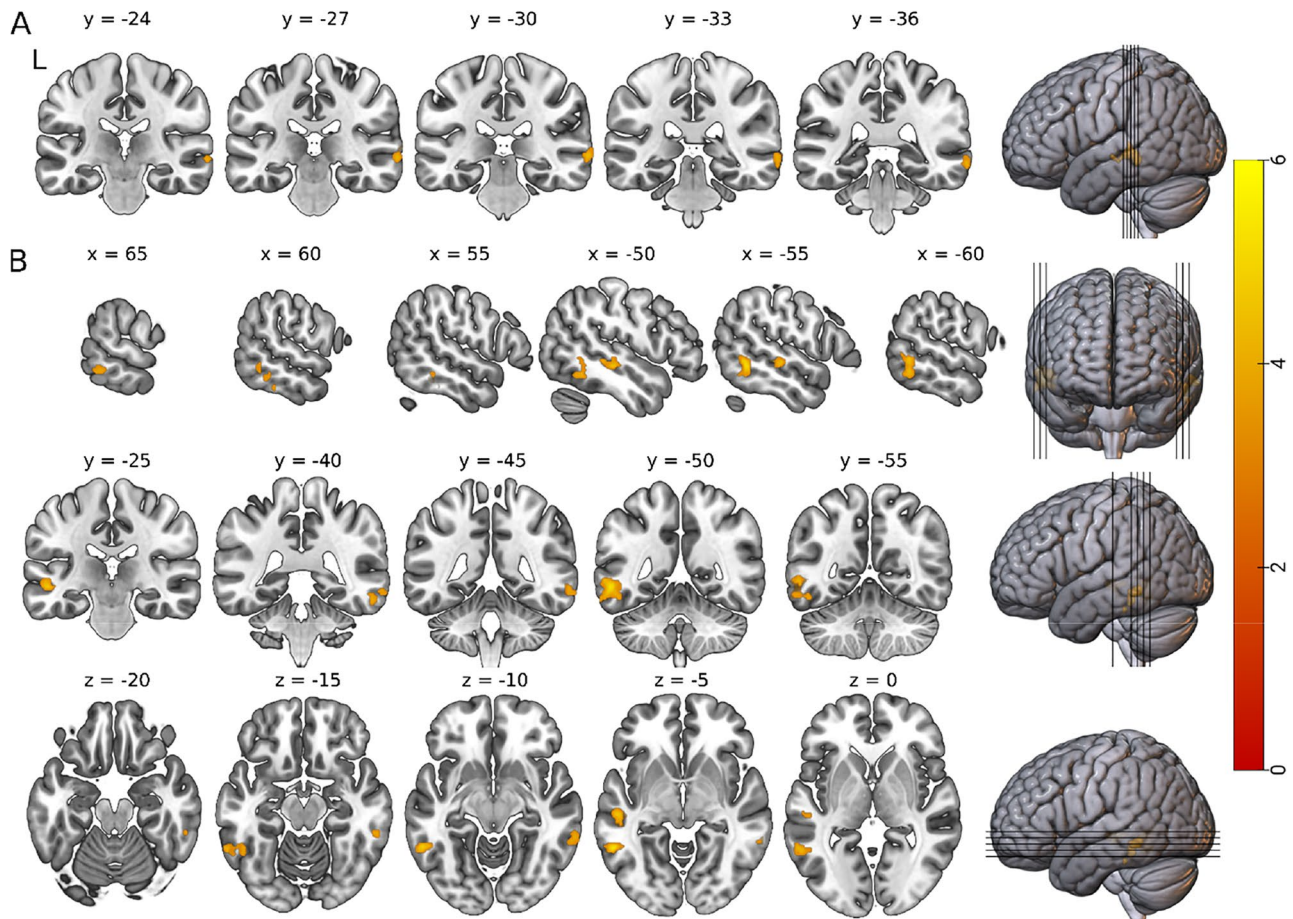


Figure 5. *t* statistical map from seed-to-voxel exercise > rest, post > pre. Slice views of significant peaks (cluster threshold $p < 0.05$ FWE-corrected, $p < 0.001$ uncorrected at voxel level) using (A) the right lobule 9 of the cerebellum and (B) the right lobule 10 of the cerebellum as the seed regions. Slice views of significant peaks (cluster threshold $p < 0.05$, cluster size $p < 0.05$ FWE-corrected) between (A) the right lobule 9 of the cerebellum (seed) and the right middle temporal gyrus ($T(39) = 5.58$, $k = 132$, p -FWE = 0.011), and between (B) the lobule 10 of the cerebellum (seed) and three significant clusters. The first cluster was located in the left middle temporal gyrus and the left inferior temporal gyrus ($T(39) = 5.69$, $k = 254$, p -FWE < 0.001), the second cluster was located in the right middle temporal gyrus ($T(39) = 5.49$, $k = 113$, p -FWE = 0.019), and a third cluster located in the left middle temporal gyrus and left superior temporal gyrus ($T(39) = 5.16$, $k = 107$, p -FWE = 0.025).

Explicit awareness. Three participants from the exercise group and 9 participants from the rest group acquired explicit knowledge of the repeated sequence when assessed during the 24-h retention session. Four participants from the exercise group and 10 participants from the rest group acquired explicit knowledge of the repeated sequence when assessed during the 35-day retention session. Because we only assessed explicit awareness during the retention sessions and not during any of the practice sessions, it is unknown when participants acquired explicit awareness. A Mann–Whitney U test revealed no significant difference in explicit awareness

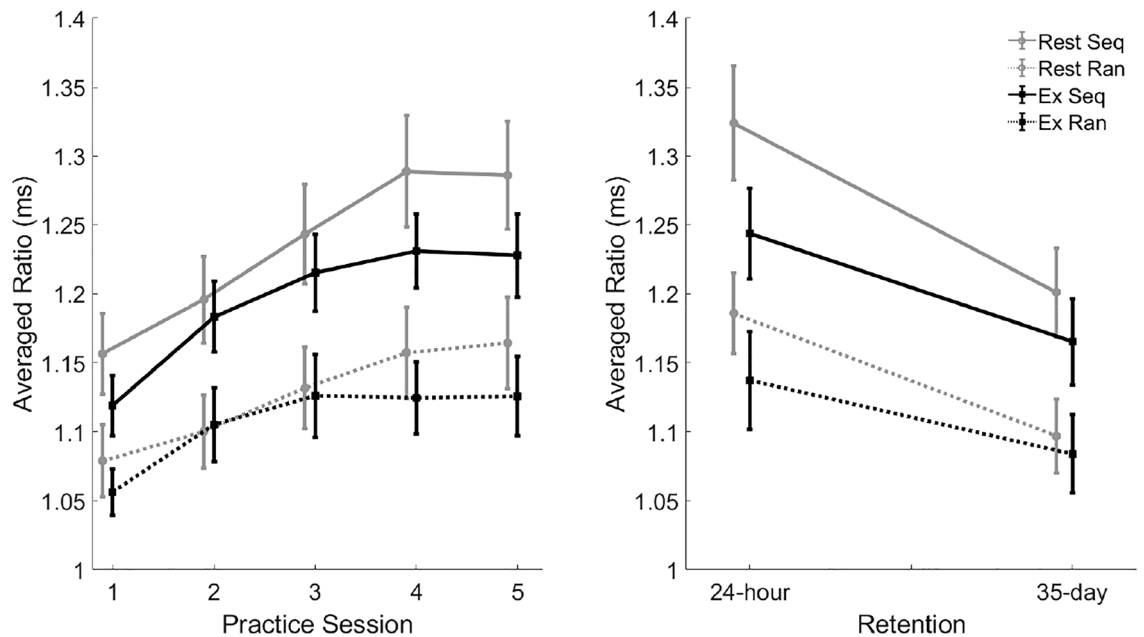


Figure 6. Averaged ratio reaction time (RT) as a function of practice session (left) and 24-h and 35-day retention session (right) for exercise and rest groups from the serial targeting task. All values were shown as a ratio relative to pre-test, then averaged across four blocks of practice each session. Higher values indicate better motor performance (left) or greater change associated with motor learning (right). Error bars represent standard error. Analysis revealed no main effect of group for practice ($p=0.413$), 24-h ($p=0.184$) or 35-day retention ($p=0.793$).

between the exercise and the rest group at the short-term ($U=156.5$, $p=0.08$) or long-term retention ($U=152$, $p=0.22$). To understand whether explicit awareness changed between the 24-h to 35-day retention tests, a change score (35-day minus 24-h post intervention) was calculated. We found no significant difference in awareness between the rest and exercise groups across time ($U=163$, $p=0.26$).

Physical fitness (Godin). A 2 (time: pre, post) by 2 (group: rest, exercise) repeated measures ANOVA revealed no main effect of time ($F(1,35)=0.231$, $p=0.634$), group ($F(1,35)=0.602$, $p=0.443$) or time by group interaction ($F(1,35)=2.914$, $p=0.097$).

Reaction time. Independent samples t-tests revealed that there was no difference in pre-test RT between the rest and exercise groups for the repeated sequence ($t(39)=-0.737$, $p=0.47$), or random sequence ($t(37)=-0.852$, $p=0.40$).

Using the averaged RT ratio data for each participant as the dependent variable across the 5 days of practice, a 2 (sequence: repeated, random) by 5 (practice day: 1, 2, 3, 4, 5) mixed-model ANOVA revealed a significant main effect of sequence type ($F(1,38)=63.819$, $p<0.001$, $\eta_p^2=0.627$) and day ($F(4,152)=23.410$, $p<0.001$, $\eta_p^2=0.381$), but no main effect of group ($F(1,38)=0.684$, $p=0.413$, $\eta_p^2=0.018$). Additionally, there was a significant sequence by day interaction ($F(4,152)=14.940$, $p<0.001$, $\eta_p^2=0.282$). However, there was no sequence by group ($F(1,38)=0.720$, $p=0.402$, $\eta_p^2=0.019$), practice day by group ($F(4,38)=1.233$, $p=0.299$, $\eta_p^2=0.031$), or sequence by practice day by group ($F(4,38)=0.098$, $p=0.983$, $\eta_p^2=0.003$) interactions (Fig. 6, left). Mean RT values for sequence and random trials can be found in Table 4.

Post-hoc comparisons revealed that participants demonstrated greater change in RT across practice for the repeated sequences ($M=1.215$, $SE\pm 0.021$) compared to the random sequences ($M=1.117$, $SE\pm 0.018$; $p<0.001$). To understand the main effect of practice day, post-hoc comparisons revealed that participants improved performance across days. Performance change on practice day 2 ($M=1.146$, $SE\pm 0.019$, $p=0.001$) was significantly greater than practice day 1 ($M=1.103$, $SE\pm 0.016$). Similarly, performance change on practice day 3 ($M=1.179$, $SE\pm 0.021$) was significantly greater than practice day 2 ($p=0.033$). However, there was no significant difference between performance change on practice day 3 and practice day 4 ($p=0.457$) and practice day 4 and practice day 5 ($p=1.0$).

To test motor learning, two separate one-way repeated measure ANOVAs revealed a significant main effect of sequence at the 24-h retention test ($F(1,38)=78.498$, $p<0.001$, $\eta_p^2=0.674$), but no main effect of group ($F(1,38)=1.834$, $p=0.184$, $\eta_p^2=0.046$), and no sequence type by group interaction ($F(1,145)=1.475$, $p=0.232$, $\eta_p^2=0.037$) (Fig. 6, right). Post-hoc comparisons revealed there was more learning related change for in the repeated sequences ($M=1.284$, $SE\pm 0.027$) relative to the random sequences ($M=1.162$, $SE\pm 0.023$, $p<0.001$) at the 24-h retention session.

A similar pattern emerged at the 35-day retention test (Fig. 6, right). There was a significant main effect of sequence type ($F(1,34)=37.109$, $p<0.001$, $\eta_p^2=0.522$), but no main effect of group ($F(1,34)=0.070$, $p=0.793$,

	Rest		Exercise	
	Random	Sequence	Random	Sequence
Day 1	0.410 (0.02)	0.395 (0.01)	0.406 (0.02)	0.395 (0.01)
Day 2	0.400 (0.01)	0.382 (0.01)	0.391 (0.01)	0.374 (0.01)
Day 3	0.389 (0.01)	0.369 (0.01)	0.383 (0.01)	0.364 (0.01)
Day 4	0.381 (0.01)	0.357 (0.01)	0.381 (0.01)	0.358 (0.01)
Day 5	0.379 (0.01)	0.357 (0.01)	0.381 (0.01)	0.359 (0.01)
24-h	0.370 (0.01)	0.346 (0.01)	0.378 (0.01)	0.354 (0.01)
30-day	0.396 (0.01)	0.377 (0.01)	0.393 (0.01)	0.376 (0.01)

Table 4. Mean reaction time (SD) for rest and exercise groups across sessions.

$\eta_p^2 = 0.002$) and no sequence type by group interaction ($F(1,34) < 0.001$, $p = 0.997$, $\eta_p^2 < 0.001$). Post-hoc analysis revealed that participants showed greater learning related change for the repeated sequence ($M = 1.128$, $SE \pm 0.053$) relative to the random targets ($M = 1.036$, $SE \pm 0.048$, $p < 0.001$).

Since there were no group differences in RT at the 24-h and 35-day retention, the groups were collapsed, and individuals were categorized based on explicit awareness of the sequences. There were no group differences between the explicit and implicit learners in the 24-h retention ($F(1,38) = 0.013$, $p = 0.908$, $\eta_p^2 < 0.001$) or the 35-day retention ($F(1,36) = 0.418$, $p = 0.522$, $\eta_p^2 = 0.011$).

Cumulative magnitude. A mixed-model ANOVA using the averaged CM ratio for each participant for each practice day as the dependent variable revealed a significant main effect of sequence ($F(1,38) = 78.686$, $p < 0.001$, $\eta_p^2 = 0.674$) and practice day ($F(4,152) = 0.4652$, $p = 0.001$, $\eta_p^2 = 0.109$), but no main effect of group ($F(1,38) = 1.073$, $p = 0.307$, $\eta_p^2 = 0.027$). There was also a significant sequence by practice day interaction ($F(4,152) = 34.836$, $p < 0.001$, $\eta_p^2 = 0.478$). In contrast, there were no significant sequence by group ($F(1,38) = 1.831$, $p = 0.184$, $\eta_p^2 = 0.046$), practice day by group ($F(4,38) = 0.778$, $p = 0.541$, $\eta_p^2 = 0.020$), or sequence by practice day by group ($F(4,152) = 0.315$, $p = 0.868$, $\eta_p^2 = 0.008$) interactions.

Post-hoc comparisons revealed that across all participants there was greater performance related change for the repeated sequence ($M = 1.032$, $SE \pm 0.007$) relative to the random targets ($M = 0.975$, $SE \pm 0.005$, $p < 0.001$). Regarding the main effect of practice day, there was greater performance related change on practice day 4 ($M = 1.008$, $SE \pm 0.005$) relative to practice day 2 ($M = 0.998$, $SE \pm 0.005$, $p = 0.007$). No other comparisons reached significance.

Within the 24-h retention session there was a significant main effect of sequence ($F(1,38) = 23.439$, $p < 0.001$, $\eta_p^2 = 0.382$), no main effect group ($F(1,38) = 1.397$, $p = 0.245$, $\eta_p^2 = 0.035$), and no sequence by group interaction ($F(1,38) = 3.591$, $p = 0.066$, $\eta_p^2 = 0.086$). Post-hoc comparisons showed there was greater learning related change for the repeated sequences ($M = 1.034$, $SE \pm 0.006$) compared to the random sequences ($M = 1.000$, $SE \pm 0.005$, $p < 0.001$).

At the 35-day retention session, there was significant main effect of sequence ($F(1,36) = 13.143$, $p = 0.001$, $\eta_p^2 = 0.267$), but no main effect of group ($F(1,36) = 0.000$, $p = 0.985$, $\eta_p^2 = 0.000$), and no sequence by group interaction ($F(1,36) = 0.633$, $p = 0.431$, $\eta_p^2 = 0.017$). Pairwise comparisons revealed there was significantly greater learning related change for the repeated sequences ($M = 1.034$, $SE \pm 0.006$) relative to the random sequences ($M = 1.008$, $SE \pm 0.006$, $p = 0.007$). Collapsing across the rest and exercise group and categorizing individuals based on explicit awareness of the sequences, there was no difference between the explicit and implicit learners at the 24-h retention ($F(1,38) = 0.664$, $p = 0.420$, $\eta_p^2 = 0.017$) or the 35-day retention ($F(1,36) = 0.060$, $p = 0.807$, $\eta_p^2 = 0.002$).

Discussion

We hypothesized that 5 days of high-intensity interval exercise paired with skilled motor practice of an implicit sequence task would (1) facilitate motor learning and (2) enhance FC in brain regions that have shown age-related disruptions in older adults. Contrary to our first prediction, we found no advantage in motor learning for the exercise group; both rest and exercise groups demonstrated motor learning. However, in support of our second hypothesis, the exercise group demonstrated increases in resting state FC in the cerebellar, frontoparietal, and dorsal attentional networks. Additionally, seed-based analysis revealed strengthened FC between the limbic system and the cerebellum, and between the cerebellum and middle temporal gyrus in the exercise group.

Exercise enhances FC in critical brain regions. Enhanced connectivity was observed among brain regions shown to be affected by exercise. We observed strengthened FC between the left hippocampus and left amygdala and the right cerebellum, between the right cerebellum and middle temporal gyri, and between the cerebellar network and putamen in the exercise group. In animal models, exercise is linked to neurogenesis in the hippocampus^{12,46}, the cerebellum^{47,48}, and the amygdala^{13,14}. In older adults, exercise reduces hippocampal shrinkage^{9,49,50}. In individuals with Parkinson's disease, exercise temporarily reverses symptoms, likely affecting the striatum^{51,52}. Strengthened FC is thought to be mediated by Hebbian-like processes (i.e., repeated coactivation of brain regions enhances connectivity)^{53–56}. Since previous work showed that these brain regions can be affected following exercise, it follows that we found increased connectivity between these same brain regions following multiple sessions of high-intensity interval exercise.

The seed-to-voxel results revealed right lateralized cerebellar FC increases limited to the exercise group. Specifically, we observed strengthened connectivity between right crus 1, right crus 2, and right lobule 6 and the left hippocampus and left amygdala as well as strengthened FC between right lobule 9, right lobule 10 and bilateral middle temporal gyri. While the cerebellum is broadly involved in motor learning^{57–61}, it is integral for error-based learning^{58,62}. Age-related cortico-cerebellar FC decreases have been previously documented in older adults^{63,64} with increased cortico-cerebellar connectivity hypothesized to contribute to more efficient sensorimotor transformations^{63,65}. The importance of cerebellar involvement in error-based learning coupled with the widespread increases in cortico-cerebellar FC in the exercise group here suggests that exercise may affect cortico-cerebellar circuitry which may enhance error-based learning^{66,67}. In this context, it is plausible that while exercise enhanced FC related to error-based learning, it had little impact on motor learning of the STT, as this task contained no error feedback. Indeed, when examining the type of motor task, Wanner et al.⁶⁷ reported that exercise had a beneficial effect on both skill acquisition and motor learning, via a delayed retention test, for adaptation tasks, but not sequence-learning tasks. However, in addition to the task, Hübner and Voelcker-Rehage⁶⁸ concluded that the type of exercise, exercise intensity, and the timing of exercise relative to practice may all potentially impact the effect of exercise on motor acquisition and learning in older adults. Therefore, it is possible that a behavioural change would have been noted had we employed a different type of motor task; future work should consider this possibility.

Exercise paired with skilled motor practice of a novel task led to enhanced resting state connectivity in frontoparietal and dorsal attentional networks, encompassing regions involved in spatial transformations and attentional processes during motor learning. Further, we observed enhanced connectivity in the cerebellar network, including cerebellar-hippocampal interactions, which are integral for spatial and temporal processing in humans⁶⁹ and implicated in motor sequence learning⁷⁰. We also found increased connectivity between the cerebellum and the amygdala and between the cerebellum and the hippocampus. Given the age-related disruptions in resting state networks^{17,63}, increases in FC suggest that exercise may be an effective intervention for reversing declines in brain networks as we age. Specifically, mounting evidence suggests that the cerebellum acts as a critical structure to maintain normal motor and cognitive functioning during aging^{65,71}. Older adults show widespread decreased connectivity between the right lobule 1–6, 10, and crus 1 of the cerebellum and the putamen⁶³ and decreased connectivity between the cerebellum and the medial temporal lobe^{63,72}. Additionally, the FC increases, which were limited to the right cerebellum in the older adult exercise group, are noteworthy considering that older adults display bilateral cerebellar recruitment during motor tasks (e.g., sequence learning and tapping) relative to young adults⁶⁵. Thus, the increased couplings between limbic brain regions, the putamen, and the middle temporal gyri and the cerebellum in the exercise group suggest that repeated bouts of exercise paired with learning may contribute to enhanced cerebellar activity that could support motor and cognitive functioning in older individuals⁶⁵.

Exercise and motor skill learning. Contrary to our hypothesis, there was no added benefit of exercise on motor learning-related outcomes in older adults; both the exercise and rest groups showed motor learning. This finding suggests that changes in FC alone do not necessarily translate to enhance motor learning beyond practice. We observed changes in FC between the cerebellum and limbic system; however, we did not observe changes between the cerebellum and the cortical motor regions that support sequence specific motor learning. It is well established that regions including primary motor cortex and supplementary motor area (SMA) are critical for the formation of motor plans, including the relay of kinematic transformation to the task specific effector^{73–77}. Increased resting state FC between the cerebellum and both the primary motor cortex and SMA is associated with learning a finger-opposition sequence task^{78,79}. Additionally, our previous work showed that high-intensity interval exercise led to a release of cerebellar inhibition⁸⁰. Other work revealed that cerebellum-motor cortex connectivity is similarly altered by practice of a motor sequence task⁸¹. In the current study, we did not observe changes in the cerebellar—motor cortical network. Research in young individuals suggests that modulation of cerebellar—motor circuits may underlie the exercised-induced enhancements in motor learning^{27,66}. Thus, it is possible that aging altered the impact of exercise on cerebellar—motor cortical circuits and as a result it did not impact motor skill learning in the same manner as has been shown in younger individuals.

A recent meta-analysis examining the impact of exercise on motor learning conducted by Wanner et al.⁶⁷ suggests that stronger effects of exercise are noted when this intervention follows skilled motor practice, although a recent study showed no effect of exercise on learning even when exercise follows motor practice⁸². Though other work shows that exercise preceding skilled motor practice enhanced motor learning, this past research only considered young healthy individuals and single sessions of practice^{6,7,83}. Future work should consider the timing of exercise in older adults, relative to skilled motor practice, to test how the order of these two interventions impacts motor learning.

Explicit awareness in the rest group may have masked the beneficial effect of exercise on motor sequence learning. While we did not observe a significant difference in explicit awareness between the two groups, there was a trend for a greater number of participants having explicit knowledge of the repeated sequence in the rest group. Specifically, 9 participants from the rest group whereas only 3 participants from the exercise group acquired explicit awareness when assessed during the 24-h retention. Having explicit knowledge of a repeated sequence results in markedly shorter reaction times relative to when the sequence remains implicit^{84,85}. Therefore, it is possible that because the rest group showed a trend for having greater explicit awareness, it may have masked the beneficial effects of enhanced motor learning in the exercise group.

Limitations. The number of days in between practice sessions and between the 24-h and 35-day retention sessions were not identical across participants. While a fixed schedule would have been ideal, such an approach

would have been difficult to implement with the study design. As this study spanned across eleven separate sessions taking approximately 90 min per session, the time commitment for each participant was considerable. In conjunction with allowing enough time in between each exercise session to facilitate muscle recovery (allowing participants to maintain the 75% of maximum output during the high-intensity intervals), we opted to accommodate participants based on their availability. Importantly, it is unlikely that any changes in FC observed are due to discrepancies in participant scheduling, as we found no difference in the number of days between practice sessions between groups. In addition, only one volume of exercise was tested, namely 3 sets of 3 min of high intensity exercise training (9 min of high intensity exercise), so the impact of other volumes, intensity, or frequency of exercise on these outcomes needs further investigation. Despite these issues we show that exercise alters brain FC in healthy older adults. Moreover, it is possible the current results may be attributed to the moderate-to-high physical fitness levels of the participants and therefore do not generalize to all older adults. However, we did use a composite z-score comprised of baseline physical fitness measures as a covariate in the analyses. One limitation that may affect the interpretation of the functional connectivity results is scan length. While we employed two, 4 min scans comparable to other resting state and exercise studies with similar results^{19,40}, having longer scan lengths reduces the number of spurious connections and increases intraclass coefficients⁸⁶. Future studies investigating the impact of repeated bouts of high-intensity exercise on functional connectivity should employ longer scan lengths. Lastly, high-intensity exercise may come with increased risks, especially for sedentary individuals with unknown underlying health conditions. It should be noted, however, that all self-reported healthy older adults recruited in the current study were able to complete the high-intensity exercise intervention without any adverse effects despite a wide range of physical fitness. Therefore, this exercise protocol is feasible and can likely be generalized to healthy older adult populations.

Conclusions

We observed that pairing separate bouts of high-intensity interval exercise with skilled motor practice strengthens FC without enhancing motor learning in a healthy older adult population. Enhanced FC in the exercise group was found in networks and brain regions that are susceptible to declines in ageing, especially in the cerebellum, indicating that exercise paired with motor practice could lead to protective effects in networks that support motor and cognitive function. Overall, these results may have implications for the application of exercise in reducing age-related disruptions to FC and aiding in healthy ageing in older adults.

Received: 31 March 2021; Accepted: 19 July 2021

Published online: 24 August 2021

References

1. United Nations. *World population prospects 2019. Department of Economic and Social Affairs. World Population Prospects 2019* (2019).
2. Ketcham, C. J. & Stelmach, G. E. Age-related declines in motor control. In *Handbook of the Psychology of Aging* (2001).
3. Seidler, R. D. *et al.* Motor control and aging: Links to age-related brain structural, functional, and biochemical effects. *Neurosci. Biobehav. Rev.* <https://doi.org/10.1016/j.neubiorev.2009.10.005> (2010).
4. Neva, J. L., Brown, K. E., Mang, C. S., Francisco, B. A. & Boyd, L. A. An acute bout of exercise modulates both intracortical and interhemispheric excitability. *Eur. J. Neurosci.* **45**, 1343–1355 (2017).
5. Opie, G. M. & Semmler, J. G. Acute exercise at different intensities influences corticomotor excitability and performance of a ballistic thumb training task. *Neuroscience* <https://doi.org/10.1016/j.neuroscience.2019.05.049> (2019).
6. Mang, C. S., Snow, N. J., Wadden, K. P., Campbell, K. L. & Boyd, L. A. High-intensity aerobic exercise enhances motor memory retrieval. *Med. Sci. Sports Exerc.* <https://doi.org/10.1249/MSS.0000000000001040> (2016).
7. Roig, M., Skriver, K., Lundbye-Jensen, J., Kiens, B. & Nielsen, J. B. A single bout of exercise improves motor memory. *PLoS ONE* <https://doi.org/10.1371/journal.pone.0044594> (2012).
8. Skriver, K. *et al.* Acute exercise improves motor memory: Exploring potential biomarkers. *Neurobiol. Learn. Mem.* <https://doi.org/10.1016/j.nlm.2014.08.004> (2014).
9. Erickson, K. I. *et al.* Exercise training increases size of hippocampus and improves memory. *Proc. Natl. Acad. Sci. USA.* <https://doi.org/10.1073/pnas.1015950108> (2011).
10. Ahlskog, J. E., Geda, Y. E., Graff-Radford, N. R. & Petersen, R. C. Physical exercise as a preventive or disease-modifying treatment of dementia and brain aging. *Mayo Clin. Proc.* <https://doi.org/10.4065/mcp.2011.0252> (2011).
11. Steventon, J. J. *et al.* Hippocampal blood flow is increased after 20 min of moderate-intensity exercise. *Cereb. Cortex* <https://doi.org/10.1093/cercor/bhz104> (2020).
12. Van Praag, H., Shubert, T., Zhao, C. & Gage, F. H. Exercise enhances learning and hippocampal neurogenesis in aged mice. *J. Neurosci.* <https://doi.org/10.1523/JNEUROSCI.1731-05.2005> (2005).
13. Lin, T. W. *et al.* Running exercise delays neurodegeneration in amygdala and hippocampus of Alzheimer's disease (APP/PS1) transgenic mice. *Neurobiol. Learn. Mem.* <https://doi.org/10.1016/j.nlm.2014.12.005> (2015).
14. Lin, T. W. *et al.* Different types of exercise induce differential effects on neuronal adaptations and memory performance. *Neurobiol. Learn. Mem.* <https://doi.org/10.1016/j.nlm.2011.10.006> (2012).
15. Dennis, N. A. & Cabeza, R. Age-related dedifferentiation of learning systems: An fMRI study of implicit and explicit learning. *Neurobiol. Aging* <https://doi.org/10.1016/j.neurobiolaging.2010.04.004> (2011).
16. Andrews-Hanna, J. R. *et al.* Disruption of large-scale brain systems in advanced aging. *Neuron* <https://doi.org/10.1016/j.neuron.2007.10.038> (2007).
17. Damoiseaux, J. S. *et al.* Reduced resting-state brain activity in the 'default network' in normal aging. *Cereb. Cortex* <https://doi.org/10.1093/cercor/bhm207> (2008).
18. Geerligs, L., Renken, R. J., Saliassi, E., Maurits, N. M. & Lorist, M. M. A brain-wide study of age-related changes in functional connectivity. *Cereb. Cortex* <https://doi.org/10.1093/cercor/bhu012> (2015).
19. Voss, M. W. *et al.* Plasticity of brain networks in a randomized intervention trial of exercise training in older adults. *Front. Aging Neurosci.* <https://doi.org/10.3389/fnagi.2010.00032> (2010).
20. Wang, L. *et al.* Intrinsic connectivity between the hippocampus and posteromedial cortex predicts memory performance in cognitively intact older individuals. *Neuroimage* <https://doi.org/10.1016/j.neuroimage.2010.02.046> (2010).

21. He, J. *et al.* Influence of functional connectivity and structural MRI measures on episodic memory. *Neurobiol. Aging* <https://doi.org/10.1016/j.neurobiolaging.2011.12.029> (2012).
22. Oldfield, R. C. The assessment and analysis of handedness: The Edinburgh inventory. *Neuropsychologia* **9**, 97–113 (1971).
23. Godin, G. & Shephard, R. J. Godin leisure-time exercise questionnaire. *Med. Sci. Sports Exerc.* **29**, S36–S38 (1997).
24. Piercy, K. L. *et al.* The physical activity guidelines for Americans. *JAMA J. Am. Med. Assoc.* <https://doi.org/10.1001/jama.2018.14854> (2018).
25. Borg, G. & Löllgen, H. Borg's perceived exertion and pain scales. *Dtsch. Z. Sportmed.* <https://doi.org/10.1249/00005768-199809000-00018> (2001).
26. Beltz, N. M. *et al.* Graded exercise testing protocols for the determination of VO₂ max: Historical perspectives, progress, and future considerations. *J. Sports Med.* <https://doi.org/10.1155/2016/3968393> (2016).
27. Mang, C. S., Snow, N. J., Campbell, K. L., Ross, C. J. D. & Boyd, L. A. A single bout of high-intensity aerobic exercise facilitates response to paired associative stimulation and promotes sequence-specific implicit motor learning. *J. Appl. Physiol.* <https://doi.org/10.1152/jappphysiol.00498.2014> (2014).
28. Mang, C. S. *et al.* Diffusion imaging and transcranial magnetic stimulation assessment of transcallosal pathways in chronic stroke. *Clin. Neurophysiol.* <https://doi.org/10.1016/j.clinph.2014.12.018> (2015).
29. Meehan, S. K., Randhawa, B., Wessel, B. & Boyd, L. A. Implicit sequence-specific motor learning after subcortical stroke is associated with increased prefrontal brain activations: An fMRI Study. *Hum. Brain Mapp.* **32**, 290–303 (2011).
30. Robertson, E. M. The serial reaction time task: Implicit motor skill learning?. *J. Neurosci.* **27**, 10073–10075 (2007).
31. Lin, C. H. J. *et al.* Age related differences in the neural substrates of motor sequence learning after interleaved and repetitive practice. *Neuroimage* <https://doi.org/10.1016/j.neuroimage.2012.05.015> (2012).
32. Shea, C. H., Wulf, G., Whitacre, C. A. & Park, J. H. Surfing the implicit wave. *Q. J. Exp. Psychol. Sect. A Hum. Exp. Psychol.* <https://doi.org/10.1080/713755993> (2001).
33. Boyd, L. A. *et al.* Motor sequence chunking is impaired by basal ganglia stroke. *Neurobiol. Learn. Mem.* **92**, 35–44 (2009).
34. Vidoni, E. D. & Boyd, L. A. Achieving enlightenment: What do we know about the implicit learning system and its interaction with explicit knowledge?. *Two Major Mem. Learn.* **31**, 145–154 (2007).
35. Whitfield-Gabrieli, S. & Nieto-Castanon, A. *Conn*: A functional connectivity toolbox for correlated and anticorrelated brain networks. *Brain Connect.* <https://doi.org/10.1089/brain.2012.0073> (2012).
36. Behzadi, Y., Restom, K., Liu, J. & Liu, T. T. A component based noise correction method (CompCor) for BOLD and perfusion based fMRI. *Neuroimage* <https://doi.org/10.1016/j.neuroimage.2007.04.042> (2007).
37. Calhoun, V. D., Adali, T., Pearlson, G. D. & Pekar, J. J. A method for making group inferences from functional MRI data using independent component analysis. *Hum. Brain Mapp.* **14**, 140–151 (2001).
38. Schultz, A. P. *et al.* Template based rotation: A method for functional connectivity analysis with a priori templates. *Neuroimage* <https://doi.org/10.1016/j.neuroimage.2014.08.022> (2014).
39. Wang, Y. & Li, T. Q. Dimensionality of ICA in resting-state fMRI investigated by feature optimized classification of independent components with SVM. *Front. Hum. Neurosci.* <https://doi.org/10.3389/fnhum.2015.00259> (2015).
40. Weng, T. B. *et al.* The acute effects of aerobic exercise on the functional connectivity of human brain networks. *Brain Plast.* **2**, 171–190 (2016).
41. Desikan, R. S. *et al.* An automated labeling system for subdividing the human cerebral cortex on MRI scans into gyral based regions of interest. *Neuroimage* <https://doi.org/10.1016/j.neuroimage.2006.01.021> (2006).
42. Tzourio-Mazoyer, N. *et al.* Automated anatomical labeling of activations in SPM using a macroscopic anatomical parcellation of the MNI MRI single-subject brain. *Neuroimage* <https://doi.org/10.1006/nimg.2001.0978> (2002).
43. Gamst, G. *et al.* ANOVA assumptions. In *Analysis of Variance Designs* <https://doi.org/10.1017/cbo9780511801648.006> (2012).
44. Boraxbekk, C. J., Salami, A., Wählin, A. & Nyberg, L. Physical activity over a decade modifies age-related decline in perfusion, gray matter volume, and functional connectivity of the posterior default-mode network-A multimodal approach. *Neuroimage* <https://doi.org/10.1016/j.neuroimage.2015.12.010> (2016).
45. Godin, G. The Godin-Shephard leisure-time physical activity questionnaire. *Heal. Fit. J. Canada* **4**, 18–22 (2011).
46. Aguiar, A. S. *et al.* Short bouts of mild-intensity physical exercise improve spatial learning and memory in aging rats: Involvement of hippocampal plasticity via AKT, CREB and BDNF signaling. *Mech. Ageing Dev.* <https://doi.org/10.1016/j.mad.2011.09.005> (2011).
47. Ahlfeld, J. *et al.* Neurogenesis from Sox2 expressing cells in the adult cerebellar cortex. *Sci. Rep.* **7**, 1–7 (2017).
48. Isaacs, K. R., Anderson, B. J., Alcantara, A. A., Black, J. E. & Greenough, W. T. Exercise and the brain: Angiogenesis in the adult rat cerebellum after vigorous physical activity and motor skill learning. *J. Cereb. Blood Flow Metab.* <https://doi.org/10.1038/jcbfm.1992.14> (1992).
49. Niemann, C., Godde, B. & Voelcker-Rehage, C. Not only cardiovascular, but also coordinative exercise increases hippocampal volume in older adults. *Front. Aging Neurosci.* <https://doi.org/10.3389/fnagi.2014.00170> (2014).
50. Maass, A. *et al.* Vascular hippocampal plasticity after aerobic exercise in older adults. *Mol. Psychiatry* <https://doi.org/10.1038/mp.2014.114> (2015).
51. Goodwin, V. A., Richards, S. H., Taylor, R. S., Taylor, A. H. & Campbell, J. L. The effectiveness of exercise interventions for people with Parkinson's disease: A systematic review and meta-analysis. *Mov. Disord.* <https://doi.org/10.1002/mds.21922> (2008).
52. Petzinger, G. M. *et al.* Exercise-enhanced neuroplasticity targeting motor and cognitive circuitry in Parkinson's disease. *Lancet Neurol.* [https://doi.org/10.1016/S1474-4422\(13\)70123-6](https://doi.org/10.1016/S1474-4422(13)70123-6) (2013).
53. Shannon, B. J. *et al.* Brain aerobic glycolysis and motor adaptation learning. *Proc. Natl. Acad. Sci. USA.* <https://doi.org/10.1073/pnas.1604977113> (2016).
54. Guerra-Carrillo, B., MacKey, A. P. & Bunge, S. A. Resting-state fMRI: A window into human brain plasticity. *Neuroscientist* <https://doi.org/10.1177/1073858414524442> (2014).
55. Ma, L. *et al.* Changes in regional activity are accompanied with changes in inter-regional connectivity during 4 weeks motor learning. *Brain Res.* <https://doi.org/10.1016/j.brainres.2009.12.073> (2010).
56. Newbold, D. J. *et al.* Plasticity and spontaneous activity pulses in disused human brain circuits. *Neuron* <https://doi.org/10.1016/j.neuron.2020.05.007> (2020).
57. Doyon, J. & Benali, H. Reorganization and plasticity in the adult brain during learning of motor skills. *Curr. Opin. Neurobiol.* **15**, 161–167 (2005).
58. Debas, K. *et al.* Brain plasticity related to the consolidation of motor sequence learning and motor adaptation. *Proc. Natl. Acad. Sci. USA.* <https://doi.org/10.1073/pnas.1013176107> (2010).
59. Hikosaka, O., Nakamura, K., Sakai, K. & Nakahara, H. Central mechanisms of motor skill learning. *Curr. Opin. Neurobiol.* [https://doi.org/10.1016/S0959-4388\(02\)00307-0](https://doi.org/10.1016/S0959-4388(02)00307-0) (2002).
60. Bernard, J. A. & Seidler, R. D. Cerebellar contributions to visuomotor adaptation and motor sequence learning: An ALE meta-analysis. *Front. Hum. Neurosci.* <https://doi.org/10.3389/fnhum.2013.00027> (2013).
61. Doyon, J. *et al.* Role of the striatum, cerebellum, and frontal lobes in the learning of a visuomotor sequence. *Brain Cogn.* <https://doi.org/10.1006/brcg.1997.0899> (1997).
62. Doya, K. Complementary roles of basal ganglia and cerebellum in learning and motor control. *Curr. Opin. Neurobiol.* [https://doi.org/10.1016/S0959-4388\(00\)00153-7](https://doi.org/10.1016/S0959-4388(00)00153-7) (2000).

63. Bernard, J. A. *et al.* Disrupted cortico-cerebellar connectivity in older adults. *Neuroimage* <https://doi.org/10.1016/j.neuroimage.2013.06.042> (2013).
64. Seidler, R. *et al.* Associations between age, motor function, and resting state sensorimotor network connectivity in healthy older adults. *Neuroimage* <https://doi.org/10.1016/j.neuroimage.2014.12.023> (2015).
65. Bernard, J. A. *et al.* Shaky scaffolding: Age differences in cerebellar activation revealed through activation likelihood estimation meta-analysis. *Hum. Brain Mapp.* <https://doi.org/10.1002/hbm.25191> (2020).
66. Neva, J. L., Ma, J. A., Orsholits, D., Boisgontier, M. P. & Boyd, L. A. The effects of acute exercise on visuomotor adaptation, learning, and inter-limb transfer. *Exp. Brain Res.* <https://doi.org/10.1007/s00221-019-05491-5> (2019).
67. Wanner, P., Müller, T., Cristini, J., Pfeifer, K. & Steib, S. Exercise intensity does not modulate the effect of acute exercise on learning a complex whole-body task. *Neuroscience* <https://doi.org/10.1016/j.neuroscience.2019.11.027> (2020).
68. Hübner, L. & Voelcker-Rehage, C. Does physical activity benefit motor performance and learning of upper extremity tasks in older adults? A systematic review. *Eur. Rev. Aging Phys. Activity* <https://doi.org/10.1186/s11556-017-0181-7> (2017).
69. Yu, W. & Krook-Magnuson, E. Cognitive collaborations: Bidirectional functional connectivity between the cerebellum and the hippocampus. *Front. Syst. Neurosci.* <https://doi.org/10.3389/fnsys.2015.00177> (2015).
70. Sami, S., Robertson, E. M. & Chris Miall, R. The time course of task-specific memory consolidation effects in resting state networks. *J. Neurosci.* <https://doi.org/10.1523/JNEUROSCI.4341-13.2014> (2014).
71. Park, D. C. & Reuter-Lorenz, P. The adaptive brain: Aging and neurocognitive scaffolding. *Annu. Rev. Psychol.* <https://doi.org/10.1146/annurev.psych.59.103006.093656> (2009).
72. Siman-Tov, T. *et al.* Early age-related functional connectivity decline in high-order cognitive networks. *Front. Aging Neurosci.* <https://doi.org/10.3389/fnagi.2016.00330> (2017).
73. Dayan, E. & Cohen, L. G. Neuroplasticity subserving motor skill learning. *Neuron* <https://doi.org/10.1016/j.neuron.2011.10.008> (2011).
74. Tanji, J. & Kurata, K. Comparison of movement-related activity in two cortical motor areas of primates. *J. Neurophysiol.* <https://doi.org/10.1152/jn.1982.48.3.633> (1982).
75. Botvinik-Nezer, R. *et al.* Variability in the analysis of a single neuroimaging dataset by many teams. *Nature* <https://doi.org/10.1038/s41586-020-2314-9> (2020).
76. Padoa-Schioppa, C., Li, C. S. R. & Bizzi, E. Neuronal correlates of kinematics-to-dynamics transformation in the supplementary motor area. *Neuron* [https://doi.org/10.1016/S0896-6273\(02\)01028-0](https://doi.org/10.1016/S0896-6273(02)01028-0) (2002).
77. Li, C. S. R., Padoa-Schioppa, C. & Bizzi, E. Neuronal correlates of motor performance and motor learning in the primary motor cortex of monkeys adapting to an external force field. *Neuron* [https://doi.org/10.1016/S0896-6273\(01\)00301-4](https://doi.org/10.1016/S0896-6273(01)00301-4) (2001).
78. Herszage, J., Dayan, E., Sharon, H. & Censor, N. Explaining individual differences in motor behavior by intrinsic functional connectivity and corticospinal excitability. *Front. Neurosci.* <https://doi.org/10.3389/fnins.2020.00076> (2020).
79. Bonzano, L. *et al.* Functional connectivity in the resting-state motor networks influences the kinematic processes during motor sequence learning. *Eur. J. Neurosci.* <https://doi.org/10.1111/ejn.12755> (2015).
80. Mang, C. S. *et al.* Promoting motor cortical plasticity with acute aerobic exercise: A role for cerebellar circuits. *Neural Plast.* <https://doi.org/10.1155/2016/6797928> (2016).
81. Spampinato, D. & Celnik, P. Deconstructing skill learning and its physiological mechanisms. *Cortex* <https://doi.org/10.1016/j.cortex.2018.03.017> (2018).
82. Hung, A. *et al.* Aerobic exercise and aerobic fitness level do not modify motor learning. *Sci. Rep.* <https://doi.org/10.1038/s41598-021-84764-y> (2021).
83. Skriver, K. *et al.* explicit sine wave tracking task; a single bout of 20 min exercise had no effect on acquisition but day retention assessments neurobiology of learning and memory acute exercise improves motor memory: Exploring potential biomarkers. *Neurobiol. Learn. Mem.* **116**, 46–58 (2014).
84. Curran, T. Effects of aging on implicit sequence learning: Accounting for sequence structure and explicit knowledge. *Psychol. Res.* <https://doi.org/10.1007/BF00419678> (1997).
85. Shanks, D. R. & Channon, S. Effects of a secondary task on 'implicit' sequence learning: Learning or performance?. *Psychol. Res.* <https://doi.org/10.1007/s00426-001-0081-2> (2002).
86. Birn, R. M. *et al.* The effect of scan length on the reliability of resting-state fMRI connectivity estimates. *Neuroimage* <https://doi.org/10.1016/j.neuroimage.2013.05.099> (2013).

Acknowledgements

This study was funded by the Canadian Institutes of Health Research Project Grant (PJT-148535: PI LAB).

Author contributions

B.G., J.L.N., K.L.C., L.A.B. designed research; B.G., B.C., C.B.J., J.L.N. contributed to data collection; B.G. analyzed data; B.G. wrote first draft of the paper; B.G., J.L.N., S.N.K., L.A.B. wrote the paper; B.G. revised the paper; all authors edited the paper.

Competing interests

The authors declare no competing interests.

Additional information

Correspondence and requests for materials should be addressed to B.G.

Reprints and permissions information is available at www.nature.com/reprints.

Publisher's note Springer Nature remains neutral with regard to jurisdictional claims in published maps and institutional affiliations.



Open Access This article is licensed under a Creative Commons Attribution 4.0 International License, which permits use, sharing, adaptation, distribution and reproduction in any medium or format, as long as you give appropriate credit to the original author(s) and the source, provide a link to the Creative Commons licence, and indicate if changes were made. The images or other third party material in this article are included in the article's Creative Commons licence, unless indicated otherwise in a credit line to the material. If material is not included in the article's Creative Commons licence and your intended use is not permitted by statutory regulation or exceeds the permitted use, you will need to obtain permission directly from the copyright holder. To view a copy of this licence, visit <http://creativecommons.org/licenses/by/4.0/>.

© The Author(s) 2021