

Vascular Endothelial Growth Factor and Ischemic Heart Disease Risk: A Mendelian Randomization Study

Shiu Lun Au Yeung, MPH, PhD; Hugh Simon Hung San Lam, MBChir; C. Mary Schooling, PhD

Background—Vascular endothelial growth factor (VEGF) has angiogenic and possibly proatherosclerotic properties. Observationally it is positively associated with cardiovascular disease, although these observations could be confounded or due to reverse causation. We assessed ischemic heart disease (IHD) risk by genetically predicted VEGF, ie, using Mendelian randomization.

Methods and Results—Single nucleotide polymorphisms (SNPs) predicting VEGF level, at genome-wide significance, were applied to the CARDIoGRAMplusC4D 1000 Genomes-based genome-wide association study IHD case (n=60 801)-control (n=123 504) study. We obtained unconfounded estimates using instrumental variable analysis by combining the Wald estimates for each SNP using inverse variance weighting and Mendelian randomization–Egger regression. Based on 9 SNPs independently predicting VEGF (rs1740073 [*C6orf223*], rs2375981 [*KCNV2*], rs2639990 [*ZADH2*], rs4782371 [*ZFPM1*], rs6921438 [*LOC100132354*], rs7043199 [*VLDLR-AS1*], rs10761741 [*JMJD1C*], rs6993770 [*ZFPM2*], and rs114694170 [*MEF2C*]), VEGF was unrelated to IHD (odds ratio 0.99 per log-transformed pg/mL, 95%CI 0.96–1.02) using inverse variance weighting. However, Mendelian randomization–Egger regression suggested an inverse relation of VEGF with IHD (odds ratio 0.95, 95%CI 0.91–0.99), although the association was not evident after excluding the lead SNP (rs6921438) or additionally excluding the pleiotropic SNP (rs6993770).

Conclusions—Our study does not provide strong evidence for a positive effect of VEGF on IHD but does not rule out the possibility that some specific types of VEGF, for which genetic predictors have not yet been identified, might play a role. (*J Am Heart Assoc.* 2017;6:e005619. DOI: 10.1161/JAHA.117.005619.)

Key Words: ischemic heart disease • Mendelian randomization • vascular endothelial growth factor

Vascular endothelial growth factor (VEGF) is thought to have angiogenic and proatherosclerotic properties.^{1,2} Observationally VEGF is positively associated with cardiovascular disease (CVD), although the association may not be linear.³ However, it is unclear whether the association is due to confounding or reverse causation because VEGF may be a symptom of acute myocardial infarction.⁴ VEGF is

pharmacologically modifiable,⁵ so assessment of its potential as a target of intervention for CVD prevention is important, and clarifying its etiological role may improve understanding of CVD. Trials have shown that statins lower VEGF,⁵ raising the possibility that one of the additional benefits of statins may be due to effects on VEGF. Little evidence from randomized controlled trials concerning the effects of VEGF on CVD in the general population is available. Previous randomized controlled trials among patients with ischemic heart disease did not provide strong evidence for clinical efficacy of VEGF.⁶

Mendelian randomization studies use genetic predictors randomly allocated during conception, analogous to the randomization process in a randomized controlled trial. Genetic variants are unlikely to be affected by factors such as lifestyle or socioeconomic position, which commonly confound observational studies. Furthermore, genetic variants are unlikely to be affected by disease outcomes, and hence, Mendelian randomization is more resistant to reverse causation.⁷ As a result, this design may provide more credible evidence concerning the role of VEGF in CVD than observational studies.⁸ Mendelian randomization studies may also provide evidence more relevant to effects in the general population because randomized controlled trials are often

From the School of Public Health, Li Ka Shing Faculty of Medicine, The University of Hong Kong, Hong Kong SAR, China (S.L.A.Y., C.M.S.); Department of Pediatrics, Faculty of Medicine, The Chinese University of Hong Kong, Hong Kong SAR, China (H.S.H.S.L.); City University of New York, Graduate School of Public Health and Health Policy, New York, NY (C.M.S.).

Accompanying Data S1 and Table S1 are available at <http://jaha.ahajournals.org/content/6/8/e005619/DC1/embed/inline-supplementary-material-1.pdf>

Correspondence to: C. Mary Schooling, PhD, School of Public Health, Li Ka Shing Faculty of Medicine, The University of Hong Kong, 1/F, Patrick Manson Building (North Wing), 7 Sassoon Road, Hong Kong SAR, China. E-mail: cms1@hkucc.hku.hk

Received January 16, 2017; accepted May 11, 2017.

© 2017 The Authors. Published on behalf of the American Heart Association, Inc., by Wiley. This is an open access article under the terms of the Creative Commons Attribution-NonCommercial License, which permits use, distribution and reproduction in any medium, provided the original work is properly cited and is not used for commercial purposes.

Clinical Perspective

What Is New?

- Using Mendelian randomization on very large populations, we do not find any evidence of a causal role of vascular endothelial growth factor in ischemic heart disease.
- The roles of specific vascular endothelial growth factor subtypes on ischemic heart disease require further investigation.

What Are the Clinical Implications?

- Our results suggest that therapeutic strategies targeting vascular endothelial growth factor may not be of benefit for ischemic heart disease.

conducted in patient populations only.⁶ Meta-analysis of candidate gene studies examining the relation of VEGF-related genetic polymorphisms to coronary artery disease found no evidence supporting a causal effect of VEGF on ischemic heart disease (IHD), but these studies were of limited size (≈ 630 participants in the analysis for IHD)⁹ and so were potentially underpowered as well as open to publication bias. To provide a more definitive answer about the role of VEGF in CVD, both as a target of intervention and from an etiological perspective, we conducted a Mendelian randomization study using the largest genome-wide association study (GWAS) to date of VEGF ($n=16\ 112$),¹⁰ applied to a large IHD case ($n=60\ 801$ for IHD)-control ($n=123\ 504$) study.¹¹

Methods

Study Design

This is a Mendelian randomization study, ie, an instrumental variable analysis with a genetic instrument, and has 3 key assumptions: (1) the genetic instrument predicts the exposure; (2) the genetic instrument is not associated with confounders of the exposure-outcome relation; and (3) the genetic instrument does not affect the outcome other than via its influence on the exposure of interest (exclusion restriction, ie, absence of horizontal pleiotropy). We attempted to address these assumptions first by choosing as genetic instruments for VEGF genetic variants that strongly predicted VEGF, second by using genetic instruments because genetic instruments are unlikely to be associated with confounders of the exposure-outcome relation, and third by checking whether the genetic variants predicting VEGF are known to have any horizontal pleiotropic effects on IHD, ie, effects on IHD via pathways that do not involve VEGF. In the context of Mendelian randomization, if an instrument's pleiotropic effect is mediated via VEGF (ie, vertical pleiotropy), then it would not violate the instrumental variable

assumption.¹² Furthermore, there are also other assumptions such as negligible measurement error for the gene-exposure relation (no measurement error assumption), if the variance of the estimates does not take into account the variance of the genetic variants on exposure, which is likely to be satisfied in large samples.¹³

Genetically Predicted VEGF

From a GWAS of VEGF, based on 16 112 adults of European ancestry with a mean age of 54.8 years using the 1000 Genomes reference data, single nucleotide polymorphisms (SNPs) that predicted VEGF (per log-transformed pg/mL) at genome-wide significance ($P < 5 \times 10^{-8}$) were obtained.¹⁰ Correlations among these SNPs were evaluated from the r^2 for linkage disequilibrium obtained from SNP Annotation and Proxy Search (<http://www.broad.mit.edu/mpg/snap/lidsearch.php>) using 1000 Genomes (pilot 1, CEU) reference data. To rule out the possibility of violation of the exclusion restriction assumption by pleiotropic SNPs that affect IHD through exposures other than VEGF, we also cross-checked any other phenotypes these SNPs were associated with via a comprehensive genotype-to-phenotype cross-reference, Ensembl (Release 87) (<http://www.ensembl.org/index.html>). Ensembl gives any known traits associated with SNPs reported in another database such as the NHGRI-EBI GWAS catalog, which curates SNP-phenotype relations from published genome-wide association studies, usually using the conventional threshold for genome-wide significance of 5×10^{-8} . Here, traits known to cause IHD (eg, lipids, blood pressure) were considered as horizontal pleiotropic effects and violated the exclusion restriction assumption. However, we cannot rule out the possibility that such traits indicate vertical pleiotropy (ie, the genetic instrument has multiple traits that are all mediated via VEGF), which does not invalidate the exclusion-restriction assumption,¹² or that the selected SNPs may have unmeasured/unexpected pleiotropic effects that can invalidate the inverse variance weighting analysis. We also conducted Mendelian randomization (MR)-Egger regression to reduce the risk of biases due to potentially inappropriate inclusion/exclusion of SNPs.

Genetic Predictors of Ischemic Heart Disease

Data on coronary artery disease and myocardial infarction have been contributed by CARDIoGRAMPLUS4D investigators and have been downloaded from www.CARDIOGRAMPLUS4D.ORG.¹¹ CARDIoGRAMplus4D 1000 Genomes-based GWAS is a meta-analysis of GWAS of IHD case-control studies of people of mainly European (77%), South Asian, and East Asian descent imputed using the 1000 Genomes phase 1 v3 training set with 38 million variants. The study interrogated 9.4 million

variants and included 60 801 IHD cases and 123 504 controls.¹¹ Case status was defined by an inclusive coronary artery disease diagnosis such as myocardial infarction, acute coronary syndrome, chronic stable angina, or coronary stenosis >50%. These were ascertained in various ways, such as medical records, clinical diagnosis, procedures that indicate coronary artery disease, medications or symptoms that indicate angina, or self-reports as described elsewhere.¹¹

Statistical Analyses

Estimates of the effect of VEGF on IHD were obtained from separate sample instrumental variable analyses.¹⁴ We calculated SNP-specific Wald estimates and obtained the variance using the Feiller theorem.¹⁵ We used inverse variance weighting with fixed effects to combine the SNP-specific estimates for uncorrelated SNPs (ie, with $r^2 < 0.05$), which is a common approach for separate sample instrumental variable analyses using summary data from GWAS. From the analysis we reported the odds ratio per log-transformed increase in VEGF for IHD with a 95%CI. However, inverse variance weighting will give biased estimates if some of the instruments are invalid.¹⁴

Sensitivity Analyses

MR-Egger Method

We conducted MR-Egger analysis, which will give an unbiased estimate even if all instruments are invalid (eg, presence of directional pleiotropy).¹⁶ However, MR-Egger only gives valid estimate if the Instrument Strength Independent of Direct Effect (InSIDE) assumption holds. Unfortunately, the assumption cannot be tested empirically because it would be violated if many genetic instruments influence the same unmeasured confounder of an exposure outcome relation.¹⁶ MR-Egger may also be susceptible to effect estimate dilution due to violation of a no-measurement-error assumption for instrument on exposure. To assess the degree of such dilution, we assessed the heterogeneity of the relation of genetic instruments on exposure (I^2_{GX}) and adjusted the MR-Egger estimate using the simulation extrapolation (SIMEX) method if I^2_{GX} was less than 90%.¹⁷ Furthermore, a very low I^2_{GX} would suggest that MR-Egger may be less robust but nevertheless serve as an indicator for the validity of this test.¹⁷ From the MR-Egger regression, we also reported the intercept and the P value, which indicate the presence of overall directional pleiotropy if P value is < 0.05 .

Exclusion of Horizontal Pleiotropic SNPs/Lead SNP

We repeated the analyses, ie, inverse variance weighting and MR-Egger with the exclusion of SNPs exhibiting horizontal

pleiotropy or the lead SNP, contributing more than 50% weight in the overall analysis, as additional sensitivity analyses to examine their impact on the overall estimate.

Power Calculation

We used the online calculator for power calculation of MR studies (<http://cns.genomics.com/shiny/mRnd/>) to estimate power.¹⁸ In the original GWAS the variance explained by all 10 SNPs ranged from 19% to 52%.¹⁰ However, one of the SNPs (rs34528081) was excluded because it was not genotyped in CARDIoGRAMplusC4D 1000 Genomes and had no proxy. Assuming the remaining 9 SNPs explained only the lower bound of the total variance (ie, 19%), the sample size allows estimation of an effect size of odds ratio 0.97 for IHD per standard deviation of VEGF at 80% power with 5% significance.

All statistical analyses were conducted using R version 3.2.3 (R Foundation for Statistical Computing, Vienna, Austria) using the package “TwoSampleMR” from Github¹⁹ and scripts in the cited reference.¹⁷ The relevant scripts can be found in Data S1.

This analysis of publicly available data does not require ethical approval.

Results

Based on the most recent GWAS of VEGF, 10 SNPs reached genome-wide significance: rs1740073 (*C6orf223*), rs2375981 (*KCNV2*), rs2639990 (*ZADH2*), rs4782371 (*ZFPM1*), rs6921438 (*LOC100132354*), rs7043199 (*VLDLR-AS1*), rs10761741 (*JMJD1C*), rs6993770 (*ZFPM2*), rs114694170 (*MEF2C*), and rs34528081 (*VEGFA*), which explained up to 52% of the VEGF phenotypic variance.¹⁰ Among them, rs34528081 (*VEGFA*) was not genotyped in the CARDIoGRAMplusC4D 1000 Genomes-based GWAS, and no proxy for rs34528081 could be identified; hence, it could not be included in the analyses. The remaining 9 SNPs were largely uncorrelated, although rs1740073 was minimally correlated with rs6921438 ($r^2 < 0.001$) and rs2375981 with rs7043199 ($r^2 = 0.001$), so all 9 SNPs were used. The SNP rs6993770 (*ZFPM2*) was potentially pleiotropic because it is associated with platelets according to Ensembl ($P = 4 \times 10^{-17}$) and so might affect IHD other than via VEGF. The lead SNP (rs6921438 in *LOC100132354*) contributed 82% of the weight in the inverse variance-weighting analysis. Information extracted concerning these SNPs is given in Table S1.

Table shows the MR estimates for VEGF on IHD using different methodological approaches. The inverse variance-weighted estimate showed no clear association of VEGF with IHD (odds ratio 0.99 per log-transformed pg/mL, 95%CI 0.96–1.02) using all 9 SNPs. Figure 1 shows that rs6921438

Table. Estimates of the Effect of Genetically Predicted VEGF (per Log-Transformed pg/mL)¹⁰ on IHD¹¹ Obtained From Mendelian Randomization Using Different Methodological Approaches and Exclusions for Pleiotropic SNPs

	Inverse Variance Weighting With Fixed Effects		MR-Egger			
	Odds Ratio	95%CI	Odds Ratio	95%CI	Intercept (P Value)	I ² _{Gx}
All 9 SNPs	0.99	0.96 to 1.02	0.95	0.91 to 0.99	0.016 (0.02)	99.8%
Excluding rs6993770 (ie, 8 SNPs)	0.98	0.96 to 1.01	0.95	0.92 to 0.99	0.012 (0.09)	99.8%
Excluding rs6921438 (ie, 8 SNPs)	1.08	1.02 to 1.15	1.06	0.90 to 1.24	0.003 (0.78)	97.1%
Excluding rs6993770 and rs6921438 (ie, 7 SNPs)	1.05	0.98 to 1.13	1.01	0.85 to 1.20	0.006 (0.63)	96.9%

IHD indicates ischemic heart disease; MR, Mendelian randomization; SNP, single nucleotide polymorphism; VEGF, vascular endothelial growth factor.

(*LOC100132354*) was most influential in the analysis. However, the estimate was not substantially different when rs6921438 (*LOC100132354*) or rs6993770 (*ZFPM2*) or both SNPs were excluded. The MR-Egger estimate gave an inverse association of VEGF with IHD (odds ratio 0.95, 95%CI 0.91-0.99) based on 9 SNPs or with rs6993770 (*ZFPM2*) excluded, but the MR-Egger estimate was null after exclusion of rs6921438 (*LOC100132354*) or both SNPs. The MR-Egger intercept *P* value (*P*=0.02 using all 9 SNPs) suggested directional pleiotropy, which is also reflected in the scatterplot of the genetic association of outcome against genetic association of exposure for each genetic instrument included in this study (Figure 2). However, this was no longer evident after excluding rs6993770 (*ZFPM2*) (*P*=0.09), excluding rs6921438 (*LOC100132354*) (*P*=0.78), or excluding both rs6993770 (*ZFPM2*) and rs6921438 (*LOC100132354*) (*P*=0.63). I²_{Gx} was >90% in all analyses, suggesting that dilution of the MR-Egger estimate due to violation of the no-measurement-error assumption was limited.

Discussion

This first MR study examining the relation of VEGF with IHD found little evidence for a causal role of VEGF in IHD, consistent with meta-analysis of candidate gene studies.⁹ Therefore, the positive relation of VEGF with CVD seen in observational studies is unlikely to be causal.³

The function of VEGF is diverse, ranging from angiogenesis, vascular permeability, and tumorigenesis to possibly atherosclerosis,^{6,20} which in turn has led to the development of corresponding therapies for several diseases, including cancer, CVD, and the retinopathy of prematurity.²¹ Although VEGF-targeted therapies have had benefits in cancer and macular degeneration, albeit causing some side effects including hypertension and ocular inflammation,^{20,22-25} benefits are less apparent in the treatment of ischemia.⁶ The Framingham Heart Study suggested an inverted U-shaped relation of VEGF with CVD, which could reflect a complex

action of VEGF on CVD or could be an artifact of confounding and reverse causation.³ Other smaller studies also showed conflicting results, where people with CVD did not always have higher VEGF.^{26,27} Given the largely null findings from our study, VEGF could possibly be a biomarker or symptom of CVD rather than a cause. Similarly, randomized controlled trials did not show that VEGF improved clinical outcomes, although the effects were studied primarily in ischemic patients,⁶ as is typical of smaller clinical trials. Nevertheless, better understanding of VEGF, such as its role in angiogenesis, and how the drugs should be designed to bring about its intended effects, may help to explain the null results in previous trials.²⁸

Statins decrease cardiovascular risk more than would be expected from their effects on lipids, suggesting that statins may have multiple effects in addition to lowering low-density lipoprotein cholesterol.²⁹ Although statins lower VEGF, our study suggests the additional benefits of statins in reducing CVD risk do not appear to be primarily due to statin influence on VEGF although this is speculative and could only be confirmed in other study designs such as a mechanistic randomized controlled trial.⁵ Previous studies primarily focused on the effects of VEGF-A although other classes of VEGF may have unknown effects relevant to CVDs.¹ For example, VEGF-B may have cytoprotective properties, and animal studies have provided some evidence of clinical utility such as delayed dilated cardiomyopathy progression, whereas VEGF-C might be higher in those with ischemic cardiomyopathy.¹ Further investigation of the cardiovascular effects of VEGF sub-types may provide additional insight into their etiologic role in CVDs with corresponding implications for drug development.³⁰

The most influential SNP in this MR study of VEGF on IHD is rs6921438 (*LOC100132354*), which is located downstream of *VEGF* and close to *C6orf23* but encodes a currently uncharacterized protein,³¹ so it is difficult to know why it is relevant; rs6921438 might also be related to lipids, although the *P* values did not reach genome-wide significance (1.2×10^{-7} for high-density lipoprotein cholesterol and

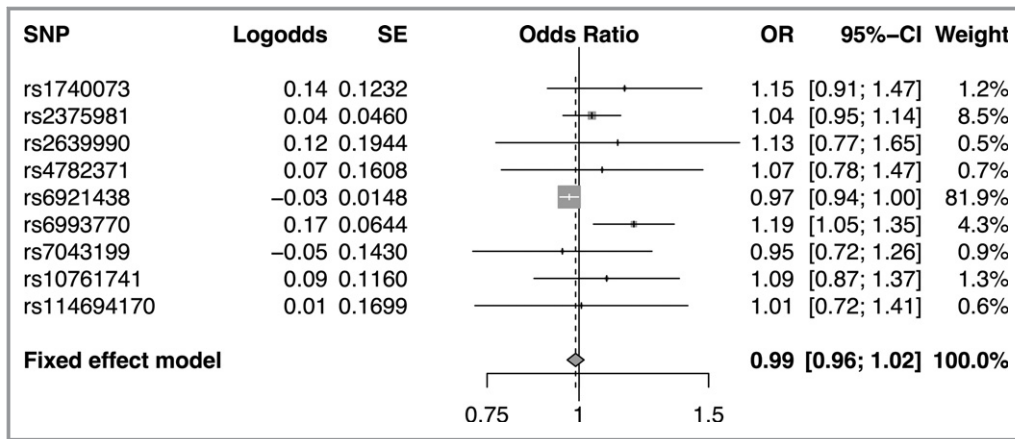


Figure 1. Single-nucleotide polymorphism (SNP)-specific and overall estimates for the effect of vascular endothelial growth factor (VEGF) (per log-transformed pg/mL)¹⁰ on ischemic heart disease (IHD)¹¹ using Mendelian randomization with inverse variance weighting with fixed effects.

1.5×10^{-4} for low-density lipoprotein cholesterol).³² Some of the gene regions including the other VEGF-related SNPs are associated with other phenotypes.^{10,31} *JMJD1C* is related to liver function, platelet counts, sex-hormone-binding globulin, and androgen levels.¹⁰ *ZFPM1* may be related to heart and coronary vessel development. *MEFC2* is related to neurodevelopment.¹⁰ Because the SNPs used to predict VEGF lack definitive characterization of their full functional effects, we used MR-Egger regression and exclusion of potentially pleiotropic SNPs to reduce the likelihood of bias as sensitivity analyses.⁸ We found the inverse association of VEGF with IHD that was no longer evident using MR-Egger regression excluding rs6921438 (*LOC100132354*). The rs6921438 is

very influential (Figure 1) and may have been driving any inverse association. Whether the potential inverse association of VEGF with IHD is meaningful awaits clarification of the functional role, or otherwise, of rs6921438 and the other SNPs predicting VEGF in IHD.

Although we used separate sample instrumental variable analysis with genetic instruments, which is less susceptible to residual confounding than observational studies, limitations exist. First, MR has stringent assumptions. We chose SNPs that strongly predicted VEGF in GWAS.¹⁰ Because genetic variants are randomly allocated during conception, the genetic variants are unlikely to be associated with potential confounders. We also used several MR techniques

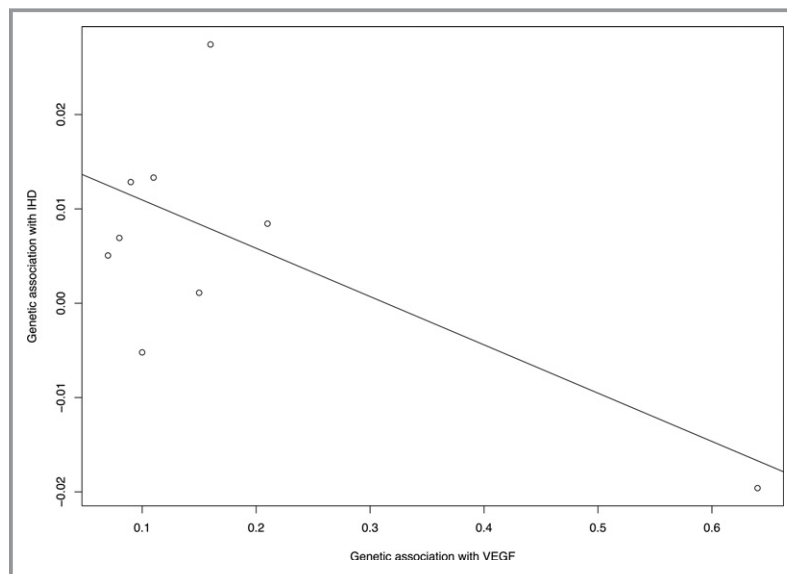


Figure 2. Scatterplot of the genetic association of outcome against genetic association of VEGF for each single-nucleotide polymorphism used in this study¹⁰ on ischemic heart disease (IHD).¹¹ VEGF indicates vascular endothelial growth factor.

including using MR-Egger regression, although we did not use a weighted median because 82% of the weight came from the lead SNP for VEGF (rs6921438 in *LOC100132354*) when a weighted median estimate gives consistent estimates only if more than 50% of the weight is from valid instruments.¹⁴ We also repeated the analyses excluding rs6921438 (*LOC100132354*) to check if the estimates were driven by this lead SNP. We searched comprehensively from genotype to phenotype to identify potentially pleiotropic effects and excluded potentially horizontal pleiotropic SNPs to reduce the likelihood of biases due to violation of the instrumental variable analysis. However, we are limited by current knowledge and lack of access to summary statistics of all genome-wide association studies of cardiovascular risk factors to check for potential genetic associations, so we cannot exclude the possibility that our estimates are biased by currently unknown pleiotropic effects. Nevertheless, we conducted MR-Egger regression, which is more robust to the inclusion of invalid SNPs, and generally found no evidence for the relation of VEGF and IHD risk, with estimates close to null. Furthermore, we were unable to examine potential nonlinearity of VEGF on IHD because we only used summary statistics in this study, whereas the existing method for assessing nonlinearity in MR requires individual-level data.³³ Nevertheless, this could be further explored in the UK Biobank once it accumulates enough IHD cases.³⁴ Genomic control in the GWAS reduced the likelihood of confounding by population stratification.^{10,11} The SNPs included in this study were replicated, and we used estimates from the discovery and replication stages combined. Hence, the results should be less susceptible to the winner's curse. However, a small proportion (5%) of the 184 305 participants in CARDIoGRAMplusC4D 1000 Genomes-based GWAS come from the VEGF GWAS (n=9548), and any resulting bias due to winner's curse could underestimate the association between VEGF and IHD risk.³⁵ Channeling bias is also unlikely because the genetic variants were randomly allocated at conception and hence should not be determined by other factors. Second, we assumed the genetic association with VEGF was present in CARDIoGRAMplusC4D 1000 Genomes-based GWAS, which is likely, as both studies mainly included adults of European descent.^{10,11} Third, we did not apply the VEGF SNPs to CARDIoGRAMplusC4D metabochip, as it only had 3 VEGF SNPs (rs6921438, rs6993770, and rs10761741).³⁶⁻³⁸ Based on these 3 VEGF-related SNPs, the association of VEGF with IHD was 1.00 (95%CI 0.96-1.05) using inverse variance weighting with fixed effects, and the MR-Egger regression estimate was 0.96 (95%CI 0.62-1.48) similar to the analyses using CARDIoGRAMplusC4D 1000 Genomes-based GWAS, although the MR-Egger regression estimates had a wider confidence interval. Nevertheless, differences in sample size and population characteristics between the 2 CARDIoGRAM

GWAS might have contributed to any differences. Fourth, we were unable to include rs34528081 (*VEGFA*) in the analyses because it was not genotyped in the CARDIoGRAMplusC4D 1000 Genomes-based GWAS, and no proxy SNPs could be identified for it. *VEGFA* is the main genetic locus-determining serum VEGF,³⁹ so we cannot rule out the possibility that inclusion of this SNP could produce a different estimate for the effect of VEGF on IHD or that VEGF-A may have a different effect from other types of VEGF. Nevertheless, we have also included other SNPs, which may have better predictive power than *VEGFA*, based on the estimates for these SNPs on VEGF compared to the estimates for rs34528081 (*VEGFA*) on VEGF.¹⁰ Fifth, our study does not provide direct evidence on the role of VEGF in ischemia treatment, given that participants included in this study are not only patients suffering from ischemia. However, causal effects are usually consistent.

This MR study suggests that the observed positive association of VEGF with IHD is unlikely to be causal. Further MR studies using individual-level data may be useful to delineate any potential nonlinearity between VEGF and IHD risk and to identify the effects across classes of VEGF.

Acknowledgments

The authors would like to thank CARDIoGRAMplusC4D for making summary statistics publicly available.

Disclosures

None.

References

1. Taimeh Z, Loughran J, Birks EJ, Bolli R. Vascular endothelial growth factor in heart failure. *Nat Rev Cardiol*. 2013;10:519–530.
2. Celletti FL, Waugh JM, Amabile PG, Brendolan A, Hilfiker PR, Dake MD. Vascular endothelial growth factor enhances atherosclerotic plaque progression. *Nat Med*. 2001;7:425–429.
3. Kaess BM, Preis SR, Beiser A, Sawyer DB, Chen TC, Seshadri S, Vasan RS. Circulating vascular endothelial growth factor and the risk of cardiovascular events. *Heart*. 2016;102:1898–1901.
4. Hojo Y, Ikeda U, Zhu Y, Okada M, Ueno S, Arakawa H, Fujikawa H, Katsuki T, Shimada K. Expression of vascular endothelial growth factor in patients with acute myocardial infarction. *J Am Coll Cardiol*. 2000;35:968–973.
5. Sahebkar A, Ponziani MC, Goitre I, Bo S. Does statin therapy reduce plasma VEGF levels in humans? A systematic review and meta-analysis of randomized controlled trials. *Metabolism*. 2015;64:1466–1476.
6. Yla-Herttuala S, Rissanen TT, Vajanto I, Hartikainen J. Vascular endothelial growth factors: biology and current status of clinical applications in cardiovascular medicine. *J Am Coll Cardiol*. 2007;49:1015–1026.
7. Lawlor DA, Harbord RM, Sterne JAC, Timpson N, Davey-Smith G. Mendelian randomization: using genes as instruments for making causal inferences in epidemiology. *Stat Med*. 2008;27:1133–1163.
8. Haycock PC, Burgess S, Wade KH, Bowden J, Relton C, Davey-Smith G. Best (but oft-forgotten) practices: the design, analysis, and interpretation of Mendelian randomization studies. *Am J Clin Nutr*. 2016;103:965–978.
9. Chen HL, Liu K. Vascular endothelial growth factor polymorphisms and coronary artery disease: a systemic review and meta-analysis. *Int J Cardiol*. 2014;172:e220–e224.

10. Choi SH, Ruggiero D, Sorice R, Song C, Nutile T, Vernon Smith A, Concas MP, Traglia M, Barbieri C, Ndiaye NC, Stathopoulou MG, Lagou V, Maestrale GB, Sala C, Debette S, Kovacs P, Lind L, Lamont J, Fitzgerald P, Tonjes A, Gudnason V, Toniolo D, Pirastu M, Bellenguez C, Vasan RS, Ingelsson E, Leutenegger AL, Johnson AD, DeStefano AL, Visvikis-Siest S, Seshadri S, Ciullo M. Six novel loci associated with circulating VEGF levels identified by a meta-analysis of genome-wide association studies. *PLoS Genet.* 2016;12:e1005874.
11. Nikpay M, Goel A, Won HH, Hall LM, Willenborg C, Kanoni S, Saleheen D, Kyriakou T, Nelson CP, Hopewell JC, Webb TR, Zeng L, Dehghan A, Alver M, Armasu SM, Auro K, Bjornes A, Chasman DI, Chen S, Ford I, Franceschini N, Gieger C, Grace C, Gustafsson S, Huang J, Hwang SJ, Kim YK, Kleber ME, Lau KW, Lu X, Lu Y, Lytykainen LP, Mihailov E, Morrison AC, Pervjakova N, Qu L, Rose LM, Salfati E, Saxena R, Scholz M, Smith AV, Tikkanen E, Uitterlinden A, Yang X, Zhang W, Zhao W, de Andrade M, de Vries PS, van Zuydam NR, Anand SS, Bertram L, Beutner F, Dedoussis G, Frossard P, Gauguier D, Goodall AH, Gottesman O, Haber M, Han BG, Huang J, Jalilzadeh S, Kessler T, König IR, Lannfelt L, Lieb W, Lind L, Lindgren CM, Lokki ML, Magnusson PK, Mallick NH, Mehra N, Meitinger T, Memon FU, Morris AP, Nieminen MS, Pedersen NL, Peters A, Rallidis LS, Rasheed A, Samuel M, Shah SH, Sinisalo J, Stirrups KE, Trompet S, Wang L, Zaman KS, Ardissono D, Boerwinkle E, Borecki IB, Bottinger EP, Buring JE, Chambers JC, Collins R, Cupples LA, Danesh J, Demuth I, Elosua R, Epstein SE, Esko T, Feitosa MF, Franco OH, Franzosi MG, Granger CB, Gu D, Gudnason V, Hall AS, Hamsten A, Harris TB, Hazen SL, Hengstenberg C, Hofman A, Ingelsson E, Iribarren C, Jukema JW, Karhunen PJ, Kim BJ, Kooner JS, Kullo IJ, Lehtimäki T, Loos RJ, Melander O, Metspalu A, Marz W, Palmer CN, Perola M, Quertermous T, Rader DJ, Ridker PM, Ripatti S, Roberts R, Salomaa V, Sanghera DK, Schwartz SM, Seedorf U, Stewart AF, Stott DJ, Thiery J, Zalloua PA, O'Donnell CJ, Reilly MP, Assimes TL, Thompson JR, Erdmann J, Clarke R, Watkins H, Kathiresan S, McPherson R, Deloukas P, Schunkert H, Samani NJ, Farrall M; CARDIoGRAMplusC4D Consortium. A comprehensive 1,000 genomes-based genome-wide association meta-analysis of coronary artery disease. *Nat Genet.* 2015;47:1121–1130.
12. Burgess S, Thompson SG. Multivariable Mendelian randomization: the use of pleiotropic genetic variants to estimate causal effects. *Am J Epidemiol.* 2015;181:251–260.
13. Bowden J, Del Greco MF, Minelli C, Davey Smith G, Sheehan N, Thompson J. A framework for the investigation of pleiotropy in two-sample summary data Mendelian randomization. *Stat Med.* 2017;36:1783–1802.
14. Bowden J, Davey Smith G, Haycock PC, Burgess S. Consistent estimation in Mendelian randomization with some invalid instruments using a weighted median estimator. *Genet Epidemiol.* 2016;40:304–314.
15. Fieller EC. Some problems in interval estimation. *J R Stat Soc Series B Stat Methodol.* 1954;16:175–185.
16. Bowden J, Davey Smith G, Burgess S. Mendelian randomization with invalid instruments: effect estimation and bias detection through Egger regression. *Int J Epidemiol.* 2015;44:512–525.
17. Bowden J, Del Greco MF, Minelli C, Davey Smith G, Sheehan NA, Thompson JR. Assessing the suitability of summary data for two-sample Mendelian randomization analyses using MR-Egger regression: the role of the I^2 statistic. *Int J Epidemiol.* 2016;45:1961–1974.
18. Brion MJ, Shakhbuzov K, Visscher PM. Calculating statistical power in Mendelian randomization studies. *Int J Epidemiol.* 2013;42:1497–1501.
19. Hemani G, Zheng J, Wade KH, Laurin C, Elsworth B, Burgess S, Bowden J, Langdon R, Tan Y, Yarmolinsky J, Shihab HA, Timpson N, Evans DM, Relton C, Martin RM, Davey Smith G, Gaunt TR, Haycock PC. MR-Base: a platform for systematic causal inference across the genome using billions of genetic associations. *bioRxiv.* Available at: <http://biorxiv.org/content/early/2016/12/16/078972>. Accessed July 26, 2017.
20. Goel HL, Mercurio AM. VEGF targets the tumour cell. *Nat Rev Cancer.* 2013;13:871–882.
21. Crafts TD, Jensen AR, Blocher-Smith EC, Markel TA. Vascular endothelial growth factor: therapeutic possibilities and challenges for the treatment of ischemia. *Cytokine.* 2015;71:385–393.
22. Chakravarthy U, Harding SP, Rogers CA, Downes SM, Lotery AJ, Culliford LA, Reeves BC, IVAN Study Investigators. Alternative treatments to inhibit VEGF in age-related choroidal neovascularisation: 2-year findings of the IVAN randomised controlled trial. *Lancet.* 2013;382:1258–1267.
23. Kamba T, McDonald DM. Mechanisms of adverse effects of anti-VEGF therapy for cancer. *Br J Cancer.* 2007;96:1788–1795.
24. Falavarjani KG, Nguyen QD. Adverse events and complications associated with intravitreal injection of anti-VEGF agents: a review of literature. *Eye (Lond).* 2013;27:787–794.
25. McIntyre WF, Oqab Z, Seaborn GE, Hopman WM, Hammad N, Baranchuk A. Changes in plasma hormones and heart rate variability in patients receiving the cardiotoxic anti-cancer agent bevacizumab. *Int J Cardiol.* 2016;219:25–26.
26. Blann AD, Belgore FM, McCollum CN, Silverman S, Lip PL, Lip GY. Vascular endothelial growth factor and its receptor, Flt-1, in the plasma of patients with coronary or peripheral atherosclerosis, or Type II diabetes. *Clin Sci (Lond).* 2002;102:187–194.
27. Gardner AW, Parker DE, Montgomery PS, Sosnowska D, Casanegra AI, Esponda OL, Ungvari Z, Csiszar A, Sonntag WE. Impaired vascular endothelial growth factor A and inflammation in patients with peripheral artery disease. *Angiology.* 2014;65:683–690.
28. Zachary I, Morgan RD. Therapeutic angiogenesis for cardiovascular disease: biological context, challenges, prospects. *Heart.* 2011;97:181–189.
29. Schooling CM, Au Yeung SL, Leung GM. Why do statins reduce cardiovascular disease more than other lipid modulating therapies? *Eur J Clin Invest.* 2014;44:1135–1140.
30. Ishikawa K, Hajjar RJ. Revisiting old players in the revitalized field of cardiovascular gene therapy. *J Am Coll Cardiol.* 2015;66:166–168.
31. Debette S, Visvikis-Siest S, Chen MH, Ndiaye NC, Song C, Destefano A, Safa R, Azimi Nezhad M, Sawyer D, Marteau JB, Xanthakis V, Siest G, Sullivan L, Pfister M, Smith H, Choi SH, Lamont J, Lind L, Yang Q, Fitzgerald P, Ingelsson E, Vasan RS, Seshadri S. Identification of *cis*- and *trans*-acting genetic variants explaining up to half the variation in circulating vascular endothelial growth factor levels. *Circ Res.* 2011;109:554–563.
32. Stathopoulou MG, Bonnefond A, Ndiaye NC, Azimi-Nezhad M, El Shamié S, Saleh A, Rancier M, Siest G, Lamont J, Fitzgerald P, Visvikis-Siest S. A common variant highly associated with plasma VEGFA levels also contributes to the variation of both LDL-C and HDL-C. *J Lipid Res.* 2013;54:535–541.
33. Silverwood RJ, Holmes MV, Dale CE, Lawlor DA, Whittaker JC, Smith GD, Leon DA, Palmer T, Keating BJ, Zuccolo L, Casas JP, Dudbridge F; Alcohol-ADH1B Consortium. Testing for non-linear causal effects using a binary genotype in a Mendelian randomization study: application to alcohol and cardiovascular traits. *Int J Epidemiol.* 2014;43:1781–1790.
34. Sudlow C, Gallacher J, Allen N, Beral V, Burton P, Danesh J, Downey P, Elliott P, Green J, Landray M, Liu B, Matthews P, Ong G, Pell J, Silman A, Young A, Sprosen T, Peakman T, Collins R. UK Biobank: an open access resource for identifying the causes of a wide range of complex diseases of middle and old age. *PLoS Med.* 2015;12:e1001779.
35. Lawlor DA. Commentary: two-sample Mendelian randomization: opportunities and challenges. *Int J Epidemiol.* 2016;45:908–915.
36. CARDIoGRAMplusC4D Consortium, Deloukas P, Kanoni S, Willenborg C, Farrall M, Assimes TL, Thompson JR, Ingelsson E, Saleheen D, Erdmann J, Goldstein BA, Stirrups K, König IR, Cazier JB, Johansson A, Hall AS, Lee JY, Willer CJ, Chambers JC, Esko T, Folkersen L, Goel A, Grundberg E, Havulinna AS, Ho WK, Hopewell JC, Eriksson N, Kleber ME, Kristiansson K, Lundmark P, Lytykainen LP, Rafelt S, Shungin D, Strawbridge RJ, Thorleifsson G, Tikkanen E, Van Zuydam N, Voight BF, Waite LL, Zhang W, Ziegler A, Absher D, Altschuler D, Balmforth AJ, Barroso I, Braund PS, Burgdorf C, Claudi-Boehm S, Cox D, Dimitriou M, Do R; DIAGRAM Consortium, CARDIOGENICS Consortium, Doney AS, El Mokhtari N, Eriksson P, Fischer K, Fontanillas P, Franco-Cereceda A, Gigante B, Groop L, Gustafsson S, Hager J, Hallmans G, Han BG, Hunt SE, Kang HM, Illig T, Kessler T, Knowles JW, Kolovou G, Kuusisto J, Langenberg C, Langford C, Leander K, Lokki ML, Lundmark A, McCarthy MI, Meisinger C, Melander O, Mihailov E, Mauouche S, Morris AD, Muller-Nurasyid M; Mu TC, Nikus K, Peden JF, Rayner NW, Rasheed A, Rosinger S, Rubin D, Rumpf MP, Schafer A, Sivananthan M, Song C, Stewart AF, Tan ST, Thorgerisson G, van der Schoot CE, Wagner PJ; Wellcome Trust Case Control Consortium, Wells GA, Wild PS, Yang TP, Amouyel P, Arveiler D, Basart H, Boehnke M, Boerwinkle E, Brambilla P, Cambien F, Cupples AL, de Faire U, Dehghan A, Diemert P, Epstein SE, Evans A, Ferrario MM, Ferrieres J, Gauguier D, Go AS, Goodall AH, Gudnason V, Hazen SL, Holm H, Iribarren C, Jang Y, Kahonen M, Kee F, Kim HS, Klopp N, Koenig W, Kratzer W, Kuulasmaa K, Laakso M, Laaksonen R, Lee JY, Lind L, Ouwehand WH, Parish S, Park JE, Pedersen NL, Peters A, Quertermous T, Rader DJ, Salomaa V, Schadt E, Shah SH, Sinisalo J, Stark K, Stefansson K, Tregouet DA, Virtamo J, Wallentin L, Wareham N, Zimmermann ME, Nieminen MS, Hengstenberg C, Sandhu MS, Pastinen T, Syvanen AC, Hovingh GK, Dedoussis G, Franks PW, Lehtimäki T, Metspalu A, Zalloua PA, Siegbahn A, Schreiber S, Ripatti S, Blankenberg SS, Perola M, Clarke R, Boehm BO, O'Donnell C, Reilly MP, Marz W, Collins R, Kathiresan S, Hamsten A, Kooner JS, Thorsteinsdottir U, Danesh J, Palmer CN, Roberts R, Watkins H, Schunkert H, Samani NJ. Large-scale association analysis identifies new risk loci for coronary artery disease. *Nat Genet.* 2013;45:25–33.
37. Coronary Artery Disease Genetics Consortium. A genome-wide association study in Europeans and South Asians identifies five new loci for coronary artery disease. *Nat Genet.* 2011;43:339–344.
38. Schunkert H, König IR, Kathiresan S, Reilly MP, Assimes TL, Holm H, Preuss M, Stewart AF, Barbalic M, Gieger C, Absher D, Aherrahrou Z, Allayee H, Altschuler D, Anand SS, Andersen K, Anderson JL, Ardissono D, Ball SG, Balmforth AJ, Barnes TA, Becker DM, Becker LC, Berger K, Bis JC, Boehnke SM, Boerwinkle E, Braund PS, Brown MJ, Burnett MS, Buyschaert I; Cardiogenics, Carlquist JF, Chen L, Cichon S, Codd V, Davies RW, Dedoussis

- G, Dehghan A, Demissie S, Devaney JM, Diemert P, Do R, Doering A, Eifert S, Mokhtari NE, Ellis SG, Elosua R, Engert JC, Epstein SE, de Faire U, Fischer M, Folsom AR, Freyer J, Gigante B, Girelli D, Gretarsdottir S, Gudnason V, Gulcher JR, Halperin E, Hammond N, Hazen SL, Hofman A, Horne BD, Illig T, Iribarren C, Jones GT, Jukema JW, Kaiser MA, Kaplan LM, Kastelein JJ, Khaw KT, Knowles JW, Kolovou G, Kong A, Laaksonen R, Lambrechts D, Leander K, Lettre G, Li M, Lieb W, Loley C, Lotery AJ, Mannucci PM, Maouche S, Martinelli N, McKeown PP, Meisinger C, Meitinger T, Melander O, Merlini PA, Mooser V, Morgan T, Muhleisen TW, Muhlestein JB, Munzel T, Musunuru K, Nahrstaedt J, Nelson CP, Nothen MM, Olivieri O, Patel RS, Patterson CC, Peters A, Peyvandi F, Qu L, Quyyumi AA, Rader DJ, Rallidis LS, Rice C, Rosendaal FR, Rubin D, Salomaa V, Sampietro ML, Sandhu MS, Schadt E, Schafer A, Schillert A, Schreiber S, Schrezenmeir J, Schwartz SM, Siscovick DS, Sivanathan M, Sivapalaratnam S, Smith A, Smith TB, Snoep JD, Soranzo N, Spertus JA, Stark K, Stirrups K, Stoll M, Tang WH, Tennstedt S, Thorgeirsson G, Thorleifsson G, Tomaszewski M, Uitterlinden AG, van Rij AM, Voight BF, Wareham NJ, Wells GA, Wichmann HE, Wild PS, Willenborg C, Witteman JC, Wright BJ, Ye S, Zeller T, Ziegler A, Cambien F, Goodall AH, Cupples LA, Quertermous T, Marz W, Hengstenberg C, Blankenberg S, Ouwehand WH, Hall AS, Deloukas P, Thompson JR, Stefansson K, Roberts R, Thorsteinsdottir U, O'Donnell CJ, McPherson R, Erdmann J; Consortium CA, Samani NJ Large-scale association analysis identifies 13 new susceptibility loci for coronary artery disease. *Nat Genet.* 2011;43:333–338.
39. Ruggiero D, Dalmaso C, Nutile T, Sorice R, Dionisi L, Aversano M, Broet P, Leutenegger AL, Bourgain C, Ciullo M. Genetics of VEGF serum variation in human isolated populations of Cilento: importance of VEGF polymorphisms. *PLoS One.* 2011;6:e16982.

SUPPLEMENTAL MATERIAL

Data S1.

Scripts for the analysis

```
#R script for the paper (JAHA, 2017)
## Inverse variance weighting with fixed effect
rm(list = ls())
#install.packages("meta")
library(meta)

#Create dataframe for analysis (Post allele harmonization)
snp <- c("rs1740073", "rs2375981", "rs2639990", "rs4782371", "rs6921438", "rs6993770", "rs7043199",
"rs10761741", "rs114694170")
bx <- c(0.09,0.21,0.11,0.07,0.64,0.16,0.1,0.08,0.15)
bxse <- c(0.01,0.01,0.018,0.011,0.008,0.01,0.013,0.009,0.023)
by <- c(0.012844,0.008435,0.013316,0.005059,-0.019603,0.027433,-0.005214,0.006922,0.001106)
byse <- c(0.0109920,0.0096472,0.0212769,0.0112289,0.0094876,0.0101545,0.0142791,0.0092442,0.0254852)

VEGF <- data.frame(snp, bx, bxse, by, byse)

#All SNPs
# Calculating IV estimates manually using Feiller's theorem
VEGF$IV_estimate<-by/bx
VEGF$IV_SE <- sqrt(((by/bx)^2)*((byse^2/(by^2))+((bxse^2/(bx^2))))))

results<-metagen(VEGF$IV_estimate, VEGF$IV_SE, sm="OR", VEGF$snp)
forest(results, leftlabs=c("SNP", "Logodds", "SE"), comb.random = FALSE, hetstat = FALSE)

#Excluding rs6993770
VEGF_1<-subset(VEGF, snp!="rs6993770")
results<-metagen(VEGF_1$IV_estimate, VEGF_1$IV_SE, sm="OR", studlab=VEGF_1$snp)

#Excluding rs6921438
VEGF_2<-subset(VEGF, snp!="rs6921438")
results<-metagen(VEGF_2$IV_estimate, VEGF_2$IV_SE, sm="OR", studlab=VEGF_2$snp)

#Excluding rs6993770 and rs6921438
VEGF_3<-subset(VEGF, snp!="rs6993770"&snp!="rs6921438")
results<-metagen(VEGF_3$IV_estimate, VEGF_3$IV_SE, sm="OR", studlab=VEGF_3$snp)

#Scatterplot
plot(VEGF$bx, VEGF$by, xlab="Genetic association with VEGF", ylab="Genetic association with IHD")
abline(lm(VEGF$by~VEGF$bx, weights = VEGF$byse^-2))

####MR-Egger
rm(list = ls())
#install.packages("devtools")
library(devtools)
#install_github("MRCIEU/MRInstruments")
#install_github("MRCIEU/TwoSampleMR")
library(TwoSampleMR)
library(MRInstruments)
#install.packages("plyr")
library(plyr)

#MR-Egger
```

```

#Create dataframe for analysis (Post harmonization)
#Exposure Dataframe
SNP <- c("rs1740073", "rs2375981", "rs2639990", "rs4782371", "rs6921438", "rs6993770", "rs7043199",
"rs10761741", "rs114694170")
beta <- c(0.09,0.21,0.11,0.07,0.64,0.16,0.1,0.08,0.15)
se <- c(0.01,0.01,0.018,0.011,0.008,0.01,0.013,0.009,0.023)
effect_allele <-c("T","C","T","G","G","A","T","T","C")

VEGF <- data.frame(SNP, beta, se, effect_allele)
Exp_data <- format_data(VEGF, type="exposure")

#Outcome Dataframe
SNP <- c("rs1740073", "rs2375981", "rs2639990", "rs4782371", "rs6921438", "rs6993770", "rs7043199",
"rs10761741", "rs114694170")
beta <- c(0.012844,0.008435,0.013316,0.005059,-0.019603,0.027433,-0.005214,0.006922,0.001106)
se <- c(0.0109920,0.0096472,0.0212769,0.0112289,0.0094876,0.0101545,0.0142791,0.0092442,0.0254852)
effect_allele <-c("T","C","T","G","G","A","T","T","C")

IHD <- data.frame(SNP, beta, se, effect_allele)
Out_data <- format_data(IHD, type="outcome")

dat <- harmonise_data(
  exposure_dat = Exp_data,
  outcome_dat = Out_data,
  action=1
)

#All SNPs
res<-mr(dat)

res$OR <- exp(res$b)
res$LCI <- exp(res$b-1.96*res$se)
res$UCI <- exp(res$b+1.96*res$se)
res

egg.int<-mr_pleiotropy_test(dat) #Test for directional pleiotropy (MR-Egger)

#I2
Isq = function(y,s){
  k = length(y)
  w = 1/s^2; sum.w = sum(w)
  mu.hat = sum(y*w)/sum.w
  Q = sum(w*(y-mu.hat)^2)
  Isq = (Q - (k-1))/Q
  Isq = max(0,Isq)
  return(Isq)
}

Isq(dat$beta.exposure/dat$se.outcome,dat$se.exposure/dat$se.outcome)

#Excluding rs6993770
dat_1 <- subset(dat, SNP!="rs6993770")
res<-mr(dat_1)

res$OR <- exp(res$b)
res$LCI <- exp(res$b-1.96*res$se)

```

```
res$UCI <- exp(res$b+1.96*res$se)
res

egg.int<-mr_pleiotropy_test(dat_1) #Test for directional pleiotropy (MR-Egger)

#I2
Isq(dat_1$beta.exposure/dat_1$se.outcome,dat_1$se.exposure/dat_1$se.outcome)

#Excluding rs6921438
dat_2 <- subset(dat, SNP!="rs6921438")
res<-mr(dat_2)

res$OR <- exp(res$b)
res$LCI <- exp(res$b-1.96*res$se)
res$UCI <- exp(res$b+1.96*res$se)
res

egg.int<-mr_pleiotropy_test(dat_2) #Test for directional pleiotropy (MR-Egger)

#I2
Isq(dat_2$beta.exposure/dat_2$se.outcome,dat_2$se.exposure/dat_2$se.outcome)

#Excluding rs6993770 and rs6921438
dat_3 <- subset(dat, SNP!="rs6921438"&SNP!="rs6993770")
res<-mr(dat_3)

res$OR <- exp(res$b)
res$LCI <- exp(res$b-1.96*res$se)
res$UCI <- exp(res$b+1.96*res$se)
res

egg.int<-mr_pleiotropy_test(dat_3) #Test for directional pleiotropy (MR-Egger)

#I2
Isq(dat_3$beta.exposure/dat_3$se.outcome,dat_3$se.exposure/dat_3$se.outcome)
```

Table S1. Characteristics of single nucleotide polymorphisms (SNPs) used in the Mendelian Randomization analysis of the effect of vascular endothelial growth factor (VEGF) (per log transformed pg/ml)¹ on ischemic heart disease (IHD)²

SNP	Genome wide association study on VEGF			CARDIoGRAMplusC4D 1000 Genomes-based GWAS (IHD)	
	Effect allele/ Non effect allele	Increase in exposure (log transformed pg/ml) per effect allele (SE)	P value	Increase in log odds per effect allele (SE)	P value
rs1740073	T/C	0.09 (0.01)	4.4x10 ⁻¹⁷	0.0128 (0.011)	0.24
rs2375981	C/G	0.21 (0.01)	9.49x10 ⁻⁹⁹	0.008 (0.0096)	0.38
rs2639990	T/C	0.11 (0.018)	5.85x10 ⁻¹⁰	0.013 (0.021)	0.53
rs4782371	G/T	0.07 (0.011)	1.26x10 ⁻⁹	0.005 (0.011)	0.65
rs6921438	G/A	0.64 (0.008)	1.66x10 ⁻¹⁴⁴⁹	-0.020 (0.009)	0.04
rs6993770	A/T	0.16 (0.01)	3.83x10 ⁻⁵⁵	0.027 (0.010)	0.007
rs7043199	T/A	0.10 (0.013)	4.16x10 ⁻¹⁴	-0.005 (0.014)	0.72
rs10761741	T/G	0.08 (0.009)	2.99x10 ⁻¹⁹	0.007 (0.009)	0.45
rs114694170	C/T	0.15 (0.023)	1.09x10 ⁻¹¹	0.001 (0.025)	0.97

Supplemental References:

1. Choi SH, Ruggiero D, Sorice R, Song C, Nutile T, Vernon Smith A, Concas MP, Traglia M, Barbieri C, Ndiaye NC, Stathopoulou MG, Lagou V, Maestrale GB, Sala C, Debette S, Kovacs P, Lind L, Lamont J, Fitzgerald P, Tonjes A, Gudnason V, Toniolo D, Pirastu M, Bellenguez C, Vasan RS, Ingelsson E, Leutenegger AL, Johnson AD, DeStefano AL, Visvikis-Siest S, Seshadri S, Ciullo M. Six novel loci associated with circulating vegf levels identified by a meta-analysis of genome-wide association studies. *PLoS Genet.* 2016;12:e1005874.
2. Nikpay M, Goel A, Won HH, Hall LM, Willenborg C, Kanoni S, Saleheen D, Kyriakou T, Nelson CP, Hopewell JC, Webb TR, Zeng L, Dehghan A, Alver M, Armasu SM, Auro K, Bjornnes A, Chasman DI, Chen S, Ford I, Franceschini N, Gieger C, Grace C, Gustafsson S, Huang J, Hwang SJ, Kim YK, Kleber ME, Lau KW, Lu X, Lu Y, Lyytikainen LP, Mihailov E, Morrison AC, Pervjakova N, Qu L, Rose LM, Salfati E, Saxena R, Scholz M, Smith AV, Tikkanen E, Uitterlinden A, Yang X, Zhang W, Zhao W, de Andrade M, de Vries PS, van Zuydam NR, Anand SS, Bertram L, Beutner F, Dedoussis G, Frossard P, Gauguier D, Goodall AH, Gottesman O, Haber M, Han BG, Huang J, Jalilzadeh S, Kessler T, Konig IR, Lannfelt L, Lieb W, Lind L, Lindgren CM, Lokki ML, Magnusson PK, Mallick NH, Mehra N, Meitinger T, Memon FU, Morris AP, Nieminen MS, Pedersen NL, Peters A, Rallidis LS, Rasheed A, Samuel M, Shah SH, Sinisalo J, Stirrups KE, Trompet S, Wang L, Zaman KS, Ardissino D, Boerwinkle E, Borecki IB, Bottinger EP, Buring JE, Chambers JC, Collins R, Cupples LA, Danesh J, Demuth I, Elosua R, Epstein SE, Esko T, Feitosa MF, Franco OH, Franzosi MG, Granger CB, Gu D, Gudnason V, Hall AS, Hamsten A, Harris TB, Hazen SL, Hengstenberg C, Hofman A, Ingelsson E, Iribarren C, Jukema JW, Karhunen PJ, Kim BJ, Kooner JS, Kullo IJ, Lehtimaki T, Loos RJ, Melander O, Metspalu A, Marz W, Palmer CN, Perola M, Quertermous T, Rader DJ, Ridker PM, Ripatti S, Roberts R, Salomaa V, Sanghera DK, Schwartz SM, Seedorf U, Stewart AF, Stott DJ, Thiery J, Zalloua PA, O'Donnell CJ, Reilly MP, Assimes TL, Thompson JR, Erdmann J, Clarke R, Watkins H, Kathiresan S, McPherson R, Deloukas P, Schunkert H, Samani NJ, Farrall M, Consortium CAD. A comprehensive 1,000 genomes-based genome-wide association meta-analysis of coronary artery disease. *Nat Genet.* 2015;47:1121-1130.