



Review Article

# Single-cell Technologies Provide Novel Insights into Liver Physiology and Pathology



Guanzi Chen<sup>#</sup>, Wenli Xu<sup>#</sup>, Zhicong Long, Yutian Chong, Bingliang Lin\*<sup>ORCID</sup> and Yusheng Jie\*<sup>ORCID</sup>

Department of Infectious Diseases, The Third Affiliated Hospital of Sun Yat-sen University, Guangzhou, Guangdong, China

Received: 12 May 2023 | Revised: 25 June 2023 | Accepted: 12 July 2023 | Published online: 1 September 2023

## Abstract

The liver is the largest glandular organ in the body and has a unique distribution of cells and biomolecules. However, the treatment outcome of end-stage liver disease is extremely poor. Single-cell sequencing is a new advanced and powerful technique for identifying rare cell populations and biomolecules by analyzing the characteristics of gene expression between individual cells. These cells and biomolecules might be used as potential targets for immunotherapy of liver diseases and contribute to the development of precise individualized treatment. Compared to whole-tissue RNA sequencing, single-cell RNA sequencing (scRNA-seq) or other single-cell histological techniques have solved the problem of cell population heterogeneity and characterize molecular changes associated with liver diseases with higher accuracy and resolution. In this review, we comprehensively summarized single-cell approaches including transcriptomic, spatial

transcriptomic, immunomic, proteomic, epigenomic, and multiomic technologies, and described their application in liver physiology and pathology. We also discussed advanced techniques and recent studies in the field of single-cell; our review might provide new insights into the pathophysiological mechanisms of the liver to achieve precise and individualized treatment of liver diseases.

**Citation of this article:** Chen G, Xu W, Long Z, Chong Y, Lin B, Jie Y. Single-cell Technologies Provide Novel Insights into Liver Physiology and Pathology. *J Clin Transl Hepatol* 2024;12(1):79–90. doi: 10.14218/JCTH.2023.00224.

## Introduction

Liver diseases have become a global health burden in recent decades. For example, cirrhosis causes 1.16 million deaths, and liver cancer causes 0.788 million deaths annually, making them the 11<sup>th</sup> and 16<sup>th</sup> most common causes of death.<sup>1</sup> More than one-fifth of the Chinese population is affected by liver diseases, particularly hepatitis B viral infections, while cases of nonalcoholic hepatitis and autoimmune hepatitis are increasing.<sup>2</sup> Persistent chronic inflammation in the liver is closely associated with cirrhosis and ultimately leads to liver cancer or liver failure, and the main cause of acute liver failure in developing countries is viral hepatitis.<sup>3,4</sup> However, effective treatment options for liver diseases are so limited that liver transplantation is regarded as the only viable solution, but its demand fairly exceeds the supply.<sup>1</sup> Therefore, better tools are urgently required to elucidate the pathological mechanism and development of liver diseases with a clearer perspective. Their application may contribute to precise, personalized therapy and a decrease in mortality.

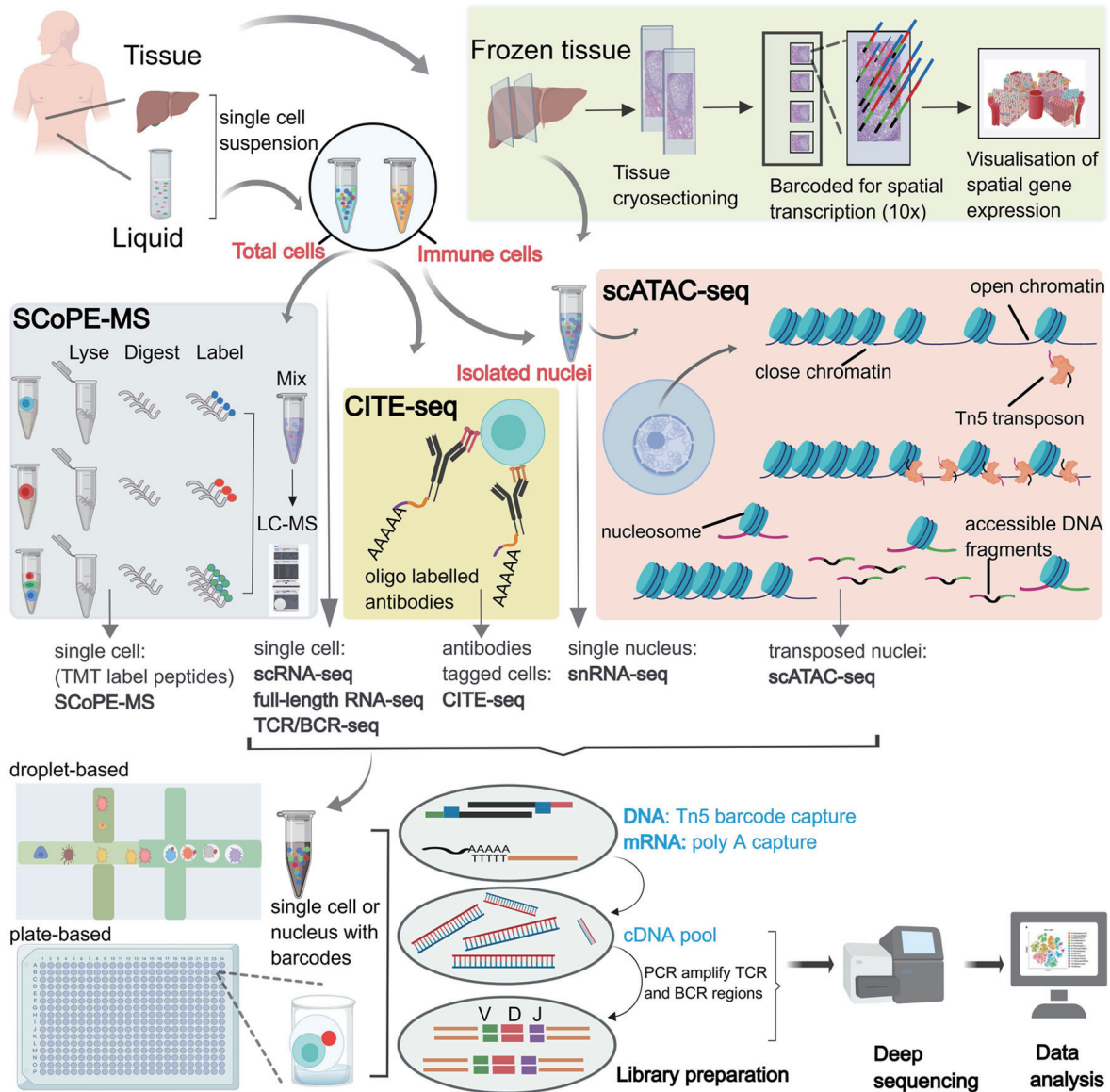
Each cell is unique for it occupies an exclusive position in space, carries distinct errors in its copied genome and is subject to programmed and induced changes in gene expression. Yet traditional sequencing is performed on tissue samples or cell populations, in which biological differences between cells can be obscured by averaging or mistaken for technical noise. In contrast, single-cell sequencing technology can isolate several thousand single cells at one time and has the advantage of detecting heterogeneity among individual cells then depicting cellular profiles, which can help us identify the rare populations of cells that have derived significance for disease progression with unprecedented high resolution.<sup>5</sup> The workflow of single-cell sequencing experiments and analyses generally includes single-cell suspen-

**Keywords:** Single-cell technology; Normal liver; Chronic liver disease; Hepatocellular carcinoma; Acute-on-chronic liver failure.

**Abbreviations:** 4D, four-dimensional; 10×, 10× Genomics; ACLF, acute-on-chronic liver failure; ACKR1, atypical chemokine receptor 1; ALC, alcoholic cirrhotic; CCL4, C-C motif chemokine ligand 4; CHB, chronic hepatitis B; CHC, combined hepatocellular-cholangiocarcinoma; CITE-seq, cellular indexing of transcriptomes and epitopes by sequencing; CSCs, cancer stem cells; CUT & RUN, cleavage under targets and release using nuclease; DCs, dendritic cells; EpCAM, epithelial cell adhesion molecule; FFPE, formalin-fixed and paraffin embedded; HBV, hepatitis B virus; HCC, hepatocellular carcinoma; HH, hepatic hemangioma; ICCA, intrahepatic cholangiocarcinoma; IFN- $\alpha$ , interferon- $\alpha$ ; ILCs, innate lymphoid cells; LVs, lymphatic vessels; LyECs, lymphatic vessel endothelial cells; nanoPOTS, nanodroplet processing in one pot for trace samples; NASH, nonalcoholic steatohepatitis; PBMCs, peripheral blood mononuclear cells; PD-1, programmed cell death-1; PDGFR $\alpha$ , recombinant human platelet-derived growth factor- $\alpha$ ; PD-L1, programmed cell death-ligand 1; PLVAP, plasmalemma vesicle-associated protein; SAR, sarcomatoid carcinoma; scATAC-seq, single-cell assay for transposase-accessible chromatin using sequencing; scCGI-seq, single-cell CpG island methylation sequencing; scChIP-seq, single-cell chromatin immunoprecipitation sequencing; scChIX-seq, single-cell chromatin immune cleavage and unmixing sequencing; scCOOL-seq, single-cell chromatin overall omic-scale landscape sequencing; scDNase-seq, single-cell DNase sequencing; sci-MET, single-cell combinatorial indexing for methylation analysis; SCoPE-MS, single-cell proteomics by mass spectrometry; scRNA-seq, single-cell RNA sequencing; scTrio-seq, single-cell triple omics sequencing; scWestern, single-cell western blotting; SLC, secondary liver cancer; smFISH, single-molecule fluorescence in situ hybridization; snRNA-seq, single-nucleus RNA sequencing; SPP1, secretory phosphoprotein 1; ST, spatial transcriptome technology; TAMs, tumor-associated macrophages; TAN, tumors-associated neutrophil; THBS1, thrombospondin-1; Tie 1, tyrosine kinase with immunoglobulin like and EGF like domains 1; TREM2, triggering receptor expressed on myeloid cells-2.

<sup>#</sup>Contributed equally to this work.

\***Correspondence to:** Bingliang Lin and Yusheng Jie, Department of Infectious Diseases, Third Affiliated Hospital of Sun Yat-sen University, Guangzhou, Guangdong 510630, China. ORCID: <https://orcid.org/0000-0003-4069-6287> (BL) and <https://orcid.org/0000-0003-3756-0653> (YJ). Tel: +86-20-85253333, Fax: +86-20-85253336, E-mail: [linbingl@mail.sysu.edu.cn](mailto:linbingl@mail.sysu.edu.cn) (BL) and [jyeshu@mail.sysu.edu.cn](mailto:jyeshu@mail.sysu.edu.cn) (YJ).



**Fig. 1. Flow diagram of different single-cell approaches in clinical liver samples.** Single-cell suspension preparation: single-cell comes from fresh samples including liquid (peripheral blood, ascites) and tissue (liver cancer, adjacent tumor, normal liver) by dissociation; frozen samples can be used to snRNA-seq and ST. ST: frozen liver tissue samples are sectioned, fixed, and permeated, then transcripts are barcoded according to their location based on a matrix of spots. These barcodes are then used to show the spatial gene signatures across the tissue section. SCoPE-MS: surviving single-cell is lysed by ultrasound, proteins are extracted from the lysate then trypsinized, and peptides from multiple samples are identified and quantified using TMTs. CITE-seq: a technology consisting of mRNA and tagged antibody sequencing, which enables the simultaneous determination of unbiased transcriptional profiles and protein markers based on oligo-tagged antibody detection in a cell. scATAC-seq: a technique for studying open chromatin regions with epigenetic and gene regulatory roles at the single-cell level. Tn5 transposase is used to cleave accessible DNA regions of open chromatin in the nuclear suspension of sorted cells, followed by post-PCR sequencing using tags of known sequence. Cell sorting: the platforms used for cell sorting are mainly based on microfluidic or cellular plate technologies, both of which allow for unbiased quantification of gene expression with the aid of unique molecular identifier and cell label technology, where mRNA expression profiles of TCR and BCR can be determined in T and B cells for adaptive immune response analysis. 10x, 10x Genomics; BCR, B-cell receptor; CITE-seq, cellular indexing of transcriptome and epitopes by sequencing; PCR, polymerase chain reaction; scATAC-seq, single-cell assay for transposase-accessible chromatin with high throughput sequencing; SCoPE-MS, single-cell proteomics by mass spectrometry; scRNA-seq, single-cell RNA sequencing; snRNA-seq, single nucleus sequencing; ST, spatial transcriptome technology; TMTs, tandem mass spectrometry tags; TCR, T-cell receptor.

sion preparation, single-cell sorting, amplification and library preparation, high-throughput sequencing, and bioinformatics analysis (Fig. 1). Tang *et al.*<sup>6</sup> proposed the first single-cell transcriptome sequencing (scRNA-seq) technology in 2009. Since then, the single-cell field has advanced rapidly, and several new approaches have been developed, including genome, transcriptome, proteome, spatial transcriptome, epigenome. Single-cell sequencing can not only analyze the het-

erogeneity of cells with the same phenotype but also obtain the genetic information of hard-to-culture microorganisms and valuable clinical samples.

In this article, we review the current single-cell approaches and discussed their key principles along with their advantages and disadvantages to understand which method is more suitable under what kind of circumstances (Table 1).<sup>7-23</sup> We also discuss the novel application of those techniques in

Table 1. Summary of single-cell analysis methods

Single-cell histology	Application	Single-cell sequencing	Advantages	Disadvantages	Ref.
Transcriptome	Cell type discovery and characterization in diseases; cell development trajectory and plasticity	Smart-seq	Full-length coverage across transcripts	Unstable; transcript bias	20
Spatial transcriptome	Spatial distribution of heterogeneous cells and spatial patterns of gene expression in different tissues; tumor microenvironment	Smart-seq2	Captures rare genes; commercial off-the-shelf SMARTer kit	Can not analyze nonpolyA RNAs; nonstrand specificity	8
		Drop-seq	High throughput; low cost	Low sensitivity	21
		10x Genomics Chromium	High throughput; high sensitivity; short cycle time; low technical noise	High cost	22
		snRNA-seq	Allow for frozen samples; relatively simple to operate	Few genes detected; cellular preference	7
		10x Visium	Commercial platform is mature and stable; widely used; with supporting verification platform	Low spatial resolution; non-single cell level	9
Proteome	Disease heterogeneity and treatment resistance; cancer immunotherapy; high throughput drug screening	GeoMx DSP	Compatible with FFPE samples and fresh frozen samples; for in-depth analysis of local tissues	Low throughput	10
		DBIT-seq	High spatial resolution; co-localization of mRNA and protein; simplified workflow	Inability to readily identify cell types	11
		scWestern	High specificity;	Low protein flux	23
		SCoPE-MS	Accurately differentiate the proteome of different cells	Low protein flux	12
		nanoPOTS	Microprotein identification; high quantitative accuracy and protein coverage	Complex workflow	13
Epigenome	Genetic characteristics of disease; deeper understanding of gene regulation from open chromatin; infer development trajectories and identify regulatory elements	scCGI-seq	High accuracy; simplified workflow	Low coverage	14
		CUT & RUN technique	Low sample requirement; high resolution and accuracy; commercial kits	Highly antibody specificity-dependent	17
		scATAC-seq	High resolution, sensitivity, and accuracy	Low recovery of DNA fragments	15
Multiomics	Integrated analysis different histological techniques to characterize the state of gene regulation more comprehensively within cells and reveal the mechanisms of disease regulation	scChIP-seq	High throughput, high coverage	Highly antibody-dependent	16
		scTrio-seq	Simultaneous analysis of genome, transcriptome, and epigenome	Low throughput	18
		CITE-seq	Simultaneous analysis of transcriptome and protein expression; high throughput	Only surface proteins can be measured	19

CITE-seq, cellular indexing of transcriptomes and epitopes by sequencing; CUT & RUN, cleavage under targets and release using nuclease; FFPE, formalin-fixed and paraffin embedded; nanoPOTS, nanodroplet processing in one pot for trace samples; scATAC-seq, single-cell assay for transposase-accessible chromatin using sequencing; scCGI-seq, single-cell CpG island methylation sequencing; scChIP-seq, single-cell chromatin immunoprecipitation sequencing; scCOOL-seq, single-cell chromatin overall omic-scale landscape sequencing; SCoPE-MS, single-cell proteomics by mass spectrometry; scTrio-seq, single-cell triple omics sequencing; scWestern, single-cell western blotting; snRNA-seq, single-nucleus RNA sequencing.

studies on liver physiology and pathology and the application prospects and technical improvements in single-cell technology to find effective individualized treatment strategies for patients with liver diseases and reduce the overall morbidity and mortality related to liver diseases.

## An overview of single-cell technologies

### scRNA-seq

scRNA-seq measures gene expression at the single-cell level and reveals heterogeneity of gene expression in individual cells or homologous cell types, its core principle refers to tag-based identification of single cells. A unique cell tag attached to a barcode is added to each cell when reverse transcription is performed prior to RNA sequencing. Therefore, even if all cells are mixed and sequenced, RNA fragments carrying the same barcode can be considered as coming from the same cell. By building a library once, we can measure the information of tens of thousands of single cells (Fig. 1). A challenge in conducting research using scRNA-seq is that high quality suspensions based on fresh tissue are not available for all tissues. In contrast, single-nucleus RNA sequencing (snRNA-seq)<sup>7</sup> is not limited by dissociation conditions and can be used for analyzing cell and gene expression of primary tissues obtained from frozen samples. Thus, this process complements scRNA-seq, but the nuclear sequencing depth is low. Some studies have compared the differences in sample type, study purpose, and target cell population between scRNA-seq and snRNA-seq for various tissues and diseases.<sup>24–26</sup>

In addition, immune cell receptor sequencing, which focuses on immune T and B cells, can comprehensively resolve T-cell receptor/B-cell receptor (TCR/BCR) gene rearrangement base sequences and the abundance of each sequence to reveal the mechanism of T/B cell-mediated humoral immune response. Single-cell analysis was first used for examining immune cells around 2013 and early 2014; specifically, researchers used scRNA-seq to generate immune cell profiles from tissues.<sup>27,28</sup> Recent advancements in scRNA-seq have enabled cellular transcriptome data and immune repertoire information to be combined for the coverage of full-length mRNA,<sup>29</sup> which can be used to determine the functional changes and interactions of subsets of immune cells during pathogen invasion and the infiltration landscape of T cells in the tumor microenvironment.<sup>30,31</sup> The most widely used transcriptome sequencing technologies in the market today are droplet-based 10× Genomics<sup>32</sup> and Smart-seq2<sup>8</sup> a single-cell full-length transcriptome sequencing technology (Table 1).

### Spatial transcriptome technology (ST)

Compared with bulk RNA-seq and scRNA-seq, ST can be used to analyze the information of tissue sections in space without cell enzymatic hydrolysis and maximum restoration of the spatial specificity of gene expression in individual cells in human organs.<sup>33</sup> It has advanced considerably in the past 30 years, initially, transcriptome technology could be used to analyze only a small number of genes, but now it can be used for analyzing the complete transcriptome. From the early technologies, such as single-molecule fluorescence in situ hybridization (smFISH)<sup>34</sup> and laser capture microdissection (LCM), to the current technologies, such as 10× Visium,<sup>9</sup> GeoMx DSP,<sup>10</sup> and DBiT-seq (Table 1).<sup>11</sup> More details on ST can be found in a recent review.<sup>35</sup> Among all ST, for now, the 10× Visium ST is the most widely used.

### Single-cell proteomic analysis

Qualitative and quantitative analysis of the single-cell pro-

teome can avoid processing information on the expression level changes caused by post transcriptional and post translational modifications and efficaciously obtain information on the regulatory nature of cells. No tools are available for analyzing the whole proteome at the single-cell level, but various single-cell proteome analysis methods are available in different subsegments, including methods based on antibody-based strategies, mass spectrometry (SCoPE-MS),<sup>12</sup> Proseek multiplex technology based on polymerase chain reaction (commonly known as PCR) immunoassay,<sup>36</sup> and others. Recently, nanodroplet processing in one pot for trace samples (nanoPOTS) microsample processing<sup>13</sup> combined with LCM and mass spectrometry found that in mouse uterine tissue sections prepared for blastocyst implantation, quantitative cell type-specific images of >2,000 proteins could be generated with a high spatial resolution.<sup>37</sup> Protein profiling characterized by captured ion mobility has led to the development of four-dimensional (4D) proteomics, which can perform high-depth quantitative analysis 4D proteomics quantification (4D-LFQ, 4D-DIA), and 4D protein modification omics.<sup>38,39</sup>

### Single-cell epigenomic analysis

Cellular epigenetic heterogeneity at the single-cell level can be used to explain the pathological regulatory mechanisms of diseases in the absence of altered genetic information. The detection of DNA methylation in single cells was first conducted in 2015 when Farlik *et al.*<sup>40</sup> developed genome-wide bisulfite sequencing, which was used to analyze genome-wide methylation sites at the single-cell level, but required many DNA samples. Currently, methylation sequencing targeting genomic regions with high CpG content (scCGI-seq)<sup>14</sup> and DNA methylation analysis using indexing methods (sciMET)<sup>41</sup> at the single-cell level are also available. There are significant differences in chromatin accessibility between cells, which often indicate gene regulation functions. For analyzing open chromatin conformations with loose features at the single-cell level, sensitive enzymes, such as the Tn5 transposase-based single-cell assay for transposase-accessible chromatin using sequencing (also referred to as scATAC-seq)<sup>15</sup> and the DNase I-based single-cell DNase sequencing (also referred to as scDNase-seq)<sup>42</sup> are required. The latter can detect a much wider range of chromatin, up to 350,000 reads/cell. To determine the link between the diversity of histone modification sites and changes in the chromatin state, single-cell histone modification, single-cell chromatin immune-precipitation sequencing (also referred to as scChIP-seq), was used in 2015.<sup>16</sup> Subsequently, the cleavage under targets and release using nuclease (CUT & RUN) technique, indexing single-cell immunocleavage (also referred to as is-cChICseq), and antibody-guided chromatin tagmentation (also referred to as ACT-seq)<sup>17,43,44</sup> were developed to overcome the low throughput characteristics of cells. More information on single-cell epigenetic techniques is summarized in a previous review.<sup>45</sup>

### Single-cell multiomics analysis

In the near future, with the help of single-cell multiomics analysis, the genomic information of cells and the regulation of transcription and translation in a cell can be presented in a comprehensive manner. In 2016, Hou *et al.*<sup>18</sup> developed single-cell triple omics sequencing (also referred to as sc-Trio-seq), and were the first to simultaneously achieve high-throughput sequencing of genomic copy number variation, DNA methylome, and transcriptome.<sup>18</sup> Cellular indexing of transcriptomes and epitopes by sequencing (also referred to

as CITE-seq) using oligonucleotide-tagged antibodies can be applied to target cell surface proteins and analyze differences between protein and transcript levels in individual cells.<sup>19</sup> Presently, multimodal analysis has greatly improved our ability to determine cellular states. The single-cell approaches described above has been applied in the field of hepatology.

### Application of findings from single-cell approaches in liver physiology and pathology

The liver is the largest digestive gland and detoxification organ in the human body and participates in the synthesis and decomposition of various substances.<sup>46</sup> The incidence of hepatitis B virus (HBV) related to end-stage liver disease have become the main causes of mortality due to liver diseases in China,<sup>47</sup> and early *in vitro* and *in vivo* studies have found that hepatitis B virus X protein (HBx) can induce malignant transformation and carcinogenesis in hepatocytes.<sup>48</sup> In 2019, integrated proteomic genomics identified the key signaling and metabolic pathways in HBV-associated hepatocellular carcinoma (HCC), where mutant CTNNB1-associated ALDOA phosphorylation was identified to be involved in HCC metabolic reprogramming, and metabolic alterations may be the most important factor for advanced cancer and poor clinical outcomes.<sup>49</sup> Studies using single-cell technology have provided valuable information on the characteristics of single cells and their gene-expression profile of normal liver and liver diseases from multiple perspectives (Table 2).<sup>50–62</sup> As Wang *et al.*<sup>63</sup> provided a comprehensive single-cell immune profile of HBV-infected patients, revealing that increased Treg and Tex cells are associated with the degree of liver damage, and that immune cell interactions networks may promote persistent HBV infection and liver histopathology. Thus, HBV infection is a dynamic process, and a deeper understanding of cellular interactions and the changes of immune microenvironment will help develop more effective therapeutic targets and biomarkers for immunotherapy in chronic hepatitis B (CHB) patients, thereby slowing down the occurrence of end-stage liver disease (Fig. 2).

#### Normal liver

scRNA-seq can be used to construct the complete cellular map of the normal liver based on the information of human liver regarding zonation, development, regeneration, and immune cell heterogeneity. In 2017, Halpern *et al.*<sup>64</sup> performed scRNA-seq to measure the entire transcriptome of thousands of mouse hepatocytes, combining it with marker gene function by smFISH to determine the positional coordinate characteristic of liver lobe positions. The researchers found that about 50% of liver genes had partitioning rules and obtained the spatial zonation profiles of the liver.<sup>64</sup> In 2019, a group of researchers performed scRNA-seq to analyze approximately 10,000 cells in normal liver tissue from nine human donors and constructed a detailed cellular landscape of the human liver,<sup>47</sup> which covered almost all important liver cell types, including hepatocytes, major liver metabolic cells, vascular endothelial cells, liver macrophages, and other immune cell types. A subsequent study integrated and analyzed scRNA-seq datasets from five independent studies of healthy livers from individuals of different sexes and ages and developed an interactively accessible online browser that could be used to access information on the expression of the gene of interest for each cell (sub) type from 28 healthy livers.<sup>65</sup> ScRNA-seq combined with ST has provided a comprehensive understanding of the differentiation of all major cell types in the human fetal/embryonic liver, including the function of fetal liver hematopoietic stem cells.<sup>66,67</sup> Such information can be

used for developing effective strategies for treating liver diseases and enhancing liver regeneration. Other than that the developmental trajectories of various cell types in the human liver at the single-cell level have been described.<sup>68</sup> In 2021, Inverso *et al.*<sup>69</sup> combined transcriptomics and proteomics to analyze and obtain high-resolution data on liver vascular endothelial cells and their hepatic vascular signaling regulation. They found that the receptor tyrosine kinase Tie1 (a protein activation region) regulates vascular activity signals and strongly influences the maintenance of liver regeneration.

Immune cell proteomic analysis associated with liver damage and regeneration were developed later.<sup>70,71</sup> In 2018, MacParland *et al.*<sup>72</sup> isolated 8,444 parenchymal cells from five healthy human livers and then performed scRNA-seq analysis to obtain the macrophage population distribution of the human liver and mapped the human liver cell landscape. In addition, researchers also used comprehensive transcriptomes of unbiased scRNA-seq to study liver-resident immune cells (LrICs).<sup>73</sup> That study showed the tissue distribution, gene expression, and functional modules of specific immune cell populations (natural killer cells, T cells, B cells, and plasma cells) in human liver and presented a landscape of LrICs to explain how the liver promotes immune defense and tolerance *in vivo*. Liver sinusoidal endothelial cells can function as host immune defenses by coordinating the proper distribution of intrahepatic resident immune cells.<sup>74</sup> The integrated information on the liver and immunity by single-cell analysis can promote the development of new immunotherapies and targeted therapies, such as programmed cell death-1 (PD-1) for antitumor treatment.<sup>75</sup> Thus, a complete intrahepatic immune signature is essential for understanding the development of liver disease and conditions under which intrahepatic compartmentalization extends to immune cells (Fig. 2).

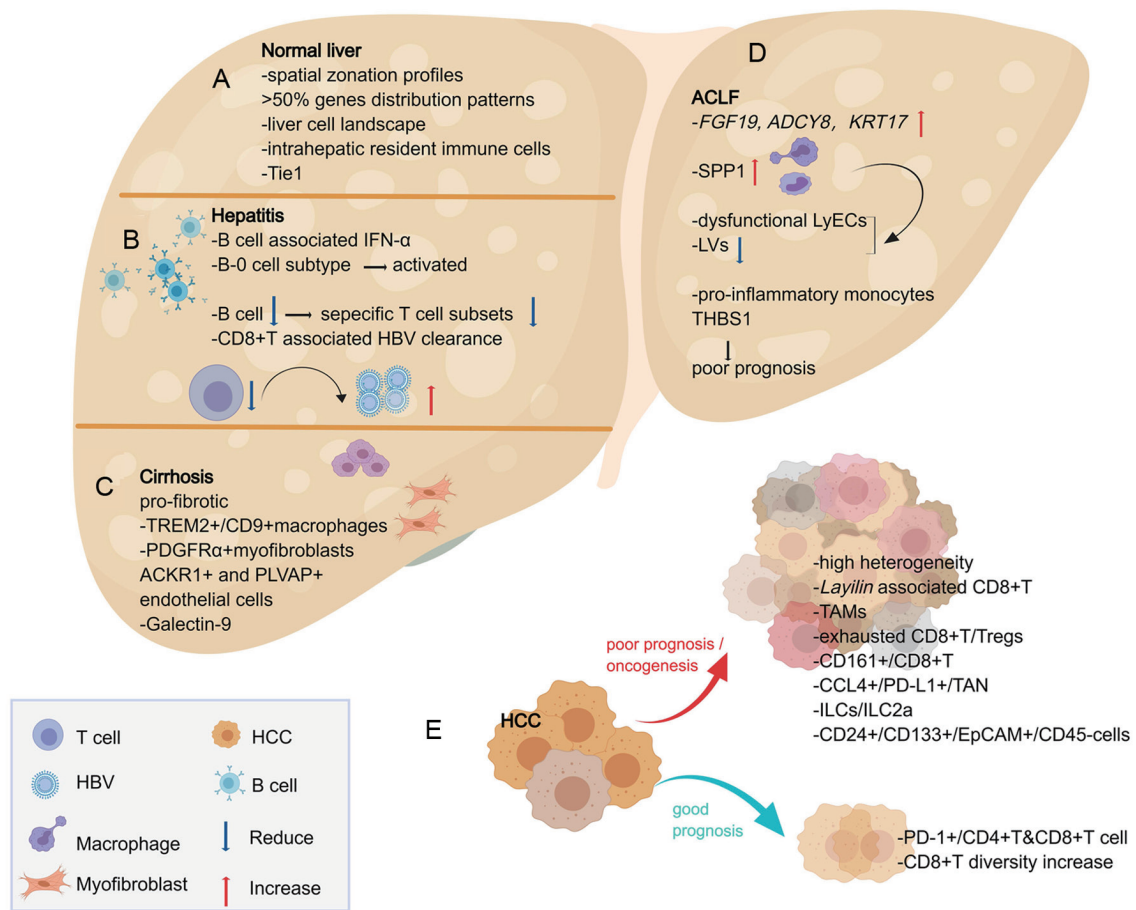
#### Hepatitis B

Hepatitis, for various reasons, can lead to adverse outcomes, including cirrhosis, liver failure, or HCC. Among them, for viral hepatitis B, which is very common in China, which affects 257 million people worldwide, a suitable functional cure is lacking, even though effective viral suppression regimens have been developed.<sup>76,77</sup> A study used scRNA-seq to analyze crosstalk between B cell and T cell subpopulations and blood samples from interferon- $\alpha$  (IFN- $\alpha$ )-treated CHB patients.<sup>78</sup> The results showed that the immune profile of B cells differed across patients, and the effect of IFN- $\alpha$  treatment also differed. Based on the antigen-presenting and costimulatory functions of B cells in cellular immunity, B cell depletion was found to impair functional T-cell subsets, such as specific CD8+T cells, leading to the ineffective clearance of HBV.<sup>78</sup> The ability of different subgroups of CD8+T cells to control the virus in patients with chronic viral hepatitis is closely related to the prognosis of the disease.<sup>79,80</sup> The CRISPR-Cas9 technology integrated with scRNA-seq analysis can be combined to interpret host gene expression in HBV-infected hepatocytes, including sequence information of low-abundance genes.<sup>50</sup> Interestingly, Mederacke *et al.*<sup>81</sup> analyzed the TCR repertoire of CD4+T, CD8+T, and regulatory T cells from peripheral blood and the transplanted livers of liver transplant recipients and showed that their TCR pools were nearly distinct, and the activated T cells might be released by the graft in an acute cellular response to rejection. The latest study on the application of scATAC-seq in the pathophysiology of hepatitis B infection reported specific immune cell populations and chromatin-accessible specific molecules associated with the HBV infection through the detection of peripheral blood mononuclear cells (PBMCs); for example, the B-0 subgroup was found to be over activated in CHB patients.<sup>51</sup>

Table 2. Overview of recent studies on human liver disease at the single-cell level

Liver diseases	Samples	Patients	Methods	Synopsis	Year	Ref.
Hepatitis	Huh7.5-NTCP cells	none	scRNA-seq(Illumina HiSeq PE150); CRISPR-Cas9	Rare transcripts from HBV-infected hepatocytes are preferentially enriched; HBV infection did not significantly alter gene expression but treatment with IFN- $\alpha$ altered gene expression in Huh7.5-NTCP cells	2021	50
	Peripheral blood	12	scATAC-seq	Identified 12 leukocytic clusters corresponding to five cell types; specific cell type of CHB was B-0 and T-3	2022	51
	NASH liver tissue	10	scRNA-seq (10x)	Cell type-specific transcriptional features of NASH; two distinct populations of activated hepatic stellate cells associated with fibrosis levels	2022	56
Liver fibrosis / Cirrhosis	Healthy, cirrhotic liver tissue; peripheral blood	10	scRNA-seq (10x)	Characterizing and comparing the functional diversity of liver biopsy cells from human fibrotic and normal livers; identified scar-associated TREM2+CD9+macrophages, ACKR1+ and PLVAP+ endothelial cells	2019	52
	Healthy, HBV-related cirrhosis, alcoholic cirrhosis liver tissue	15	scRNA-seq (Illumina HiSeq X)	Different immune profiles between alcoholic and HBV cirrhotic patients; Galectin-9 may be a potential therapeutic target for alcoholic cirrhosis treatment	2023	53
ACLF	Healthy, cirrhosis, ACLF liver tissue	25	scRNA-seq (Illumina HiSeq X)	Revealed the state of hepatic lymphatic endothelial cells in hepatitis B virus-associated ACLF; monocytes/macrophages infiltrate into ACLF	2022	54
HCC	HCC tumor tissue	8	scRNA-seq (10x)	Cellular heterogeneity in HCC; intertumoral heterogeneity higher than intratumor heterogeneity; immunocyte characteristics	2021	57
	HCC tumor tissue	1	scRNA-seq (SMART-seq)	Heterogeneity of CSCs in human HCC; identified CSCs as CD24+/CD133+/EPCAM+/CD45- cells	2018	58
	HCC tumor tissue; normal liver tissue; peripheral blood	8	scRNA-seq (Illumina HiSeq)	Characteristics of immune cell in HCC; revealed specific cytokines/compartmental factors	2019	59
	HCC, iCCA tumor tissue	7	scRNA-seq (10x)	Similar developmental trajectories in the same tumor, but heterogeneity in stemness gene expression	2022	60
	HCC Tumor tissue; normal liver tissue; peripheral blood	6	scRNA-seq (Illumina HiSeq)	Identified 11 populations of T cells in HCC; TME; exhausted CD8+T cells and Tregs preferentially enriched in HCC	2017	55
	HCC tumor tissue; normal liver tissue	18	scRNA-seq (10x)	Immune characteristics in early-relapse HCC; early-relapse tumors have less regulatory T cells, DCs and increased infiltrating CD8+T cells and higher expressed CD161+CD8+T cell compared to the primary tumors	2021	61
	(HCC, iCCA, HH, CHC, ASC, SAR, SLC) Tumor tissue; normal liver tissue; peripheral blood	124	scRNA-seq (Illumina HiSeq)	Identified six tumor-associated neutrophils, among them CCL4+ TAN and PD-L1+ TAN could promote tumor growth	2022	62

ACLF, acute-on-chronic liver failure; ACKR1, atypical chemokine receptor 1; ASC, adenosquamous carcinoma; CCL4, C-C motif chemokine ligand 4; CHB, chronic hepatitis B; CHC, combined hepatocellular-cholangiocarcinoma; CSCs, cancer stem cells; EPCAM, epithelial cell adhesion molecule; HBV, hepatitis B virus; HCC, hepatocellular carcinoma; HH, hepatic hemangioma; iCCA, intrahepatic cholangiocarcinoma; IFN- $\alpha$ , interferon- $\alpha$ ; NASH, nonalcoholic steatohepatitis; PD-L1, programmed cell death-ligand 1; PLVAP, plasminogen activator-like 1; PLVAP, plasminogen activator-like 1; SAR, sarcomatoid carcinoma; scATAC-seq, single-cell assay for transposase-accessible chromatin with high throughput sequencing; scRNA-seq, single-cell transcriptome sequencing; SLC, secondary liver cancer; TAN, tumors-associated neutrophil; TME, tumor microenvironment; TREM2, triggering receptor expressed on myeloid cells-2.



**Fig. 2. Insights provided by single-cell approaches into the normal liver and the process of chronic liver disease.** (A) scRNA-seq with ST can reveal spatial zonation profiles of gene expression in the normal liver and a detailed cell landscape of the human liver, showing that 50% of liver genes have partitioning rules. Intrahepatic resident immune cells are demonstrated their unique distribution and functions. The receptor tyrosine kinase Tie1 is the key to regulate vascular activity signals and liver regeneration. (B) The most important feature of the CHB process is immune dysregulation, with CD8+T at the center of the process; B cell reduction impairs specific T-cell subsets and decreases the clearance of HBV and the decreased cell population in hepatitis B samples results in poor IFN-α response but activated B-0 subpopulation. (C) TREM2+/CD9+ macrophages and PDGFRα+ collagen-producing myofibroblasts subpopulations involve in fibrosis process; ACKR1+ and PLVAP+ endothelial cells are found to accumulate in the fibrotic ecotone and participate in immune cell migration; Galectin-9 on Kupffer cells is associated with specific immunity and could be a potential therapeutic target for cirrhosis treatment. (D) ACLF samples show high expression of the genes *FGF19*, *ADCY8*, *KRT17* and *SPP1* secreted by macrophages resulting in reduced LVs and dysfunctional LyECs. The pro-inflammatory monocyte subtype THBS1 may reflect ACLF progression and poor prognosis. (E) HCC with different prognosis shows differential immune cell microenvironment changes, with increasing PD-1+/CD4+T & CD8+T cells and CD8+T diversity suggesting a good prognosis; high heterogeneity in HCC as well as the increasing subtypes of TAMs, exhausted CD8+T/Tregs, CD161+/CD8+T, CCL4+/PD-L1+/TAN, ILCs/ILC2a, CD24+/CD133+/EpCAM+/CD45- cells suggesting a poor prognosis. The *Layilin* gene is functionally associated with tumor-characteristic CD8+T cells and may serve as a new target for immunotherapy in HCC. ACLF, acute-on-chronic liver failure; ACKR1, atypical chemokine receptor 1; CHB, chronic hepatitis B; EpCAM, epithelial cell adhesion molecule; HBV, hepatitis B virus; HCC, hepatocellular carcinoma; IFN-α, interferon-α; LVs, lymphatic vessels; LyECs, lymphatic vessel endothelial cells; PD-1, programmed cell death-1; PD-L1, programmed cell death-ligand 1; PDGFRα, recombinant human platelet-derived growth factor-α; PLVAP, plasmalemma vesicle-associated protein; scRNA-seq, single-cell transcriptome sequencing; SPP1, secretory phosphoprotein 1; ST, spatial transcriptome technology; TAMs, tumor-associated macrophages; TAN, tumors-associated neutrophil; THBS1, thrombospondin-1; Tie 1, tyrosine kinase with immunoglobulin like and EGF like domains 1; TREM2, triggering receptor expressed on myeloid cells-2.

**Liver fibrosis and cirrhosis**

Liver fibrosis involves complex interactions between multiple mesenchymal cells located in scarred areas. These cells include mesenchymal cells, immune cells, vascular endothelial cells, etc. To determine the specific mechanisms of human liver fibrosis, Ramachandran *et al.*<sup>52</sup> used scRNA-seq to analyze the cellular diversity of more than 10<sup>5</sup> human cells in normal and fibrotic livers of humans and found that TREM2+/CD9+ macrophages and PDGFRα+collagen-producing myofibroblast subpopulations were involved in fibrosis. Additionally, profibrotic atypical chemokine receptor 1 (referred to herein as ACKR1) and plasmalemma vesicle-associated protein (referred to herein as PLVAP) endothelial cells were found

to accumulate in the fibrotic ecotone and participate in the migration of immune cells, which present several profibrotic signaling pathways through receptor and ligand interactions. Such interactions, combined with newly identified fibrogenic markers, facilitate the development of rational therapeutic targets.

Cirrhosis is a major factor associated with mortality in nonalcoholic steatohepatitis (NASH). The application of scRNA-seq by Schwabe *et al.*<sup>82</sup> provided new insights into the cellular networks involved in the development of NASH fibrosis. The cellular heterogeneity and intercellular transitions involved in the injurious fibrotic response are becoming clearer at the single-cell level.<sup>83</sup> To investigate the immune charac-

teristics of cirrhosis due to different causes, a recent study in China performed scRNA-seq on 15 liver specimens (five each from healthy controls, alcoholic cirrhotic (ALC) patients, and HBV-related cirrhotic patients) and found that the proportion of intrahepatic monocytes and macrophages was higher in the ALC group compared to that in the HBV group, with CD5L+Kupffer cells being the predominant subpopulation in ALC. The proportion of T and B cells was significantly lower, which might be related to the expression of Galectin-9 in Kupffer cells.<sup>53</sup> Therefore, the immune profile of ALC patients differs from that of HBV cirrhotic patients, and Galectin-9 might be a therapeutic target for treating ALC.

### **Acute-on-chronic liver failure (ACLF)**

Liver failure occurs due to serious liver damage caused by various factors, especially cirrhosis, which leads to severe impairment or loss of liver function. Thus, a comprehensive and systematic understanding of liver failure and the development of new treatment strategies are extremely important. In 2022, a study on the hepatic inflammatory milieu in ACLF found that hepatic lymphatic vessels (LVs) and lymphatic vessel endothelial cells (LyECs) might be new therapeutic targets for treating ACLF.<sup>54</sup> That study used scRNA-seq to analyze nonparenchymal cells from three groups of human liver tissue (healthy participants and cirrhotic and ACLF patients) and found the development of apoptotic and dysfunctional LyECs caused by the release of secretory phosphoprotein 1 (also known as SPP1) from infiltrating monocytes/macrophages in the liver. The study also found that the number of LVs was significantly lower in the ACLF group than that in the cirrhotic group. A study on HBV-associated ACLF combined RNA-seq and differential gene analysis and identified key genes associated with immunometabolic disorders, including *FGF19*, *ADCY8*, and *KRT17*. The expression of these genes was significantly upregulated during the progression of ACLF, and thus, they might be sensitive biomarkers for HBV-associated ACLF.<sup>84</sup> A transcriptomic study of PBMCs suggested that significant immune dysregulation leads to the development of ACLF from CHB.<sup>85</sup> In a recent study, researchers performed scRNA-seq in 17,310 circulating monocytes from healthy & ACLF patients and found five monocyte subpopulations, including pro-inflammatory monocytes, CD16 monocytes, HLA monocytes, megakaryocyte-like monocytes, and natural killer-like monocytes; thrombospondin-1 (THBS1) from pro-inflammatory monocytes characterized specific types of cells and transcriptional signatures, and its production was speculated to reflect the progression of ACLF and a poor prognosis. A comparison between the ACLF survival group and the death group showed that inflammation-related cytokines were significantly higher in the ACLF death group. The results of that study indicated that a detailed analysis of the characteristic monocyte subpopulations and relevant proinflammatory molecular markers might provide therapeutic strategies to arrest the progression of ACLF.<sup>86</sup> Shen *et al.*<sup>87</sup> investigated the dynamics of T cells in ACLF longitudinally by collecting PBMCs from five HBV-ACLF patients and sorting total CD4+T and CD8+T cells. They performed unbiased high-throughput sequencing to analyze the TCR $\beta$  complementarity-determining regions 3 (also referred to as CDR3) and found that the diversity of the T cell pool decreased significantly as HBV-ACLF progressed. There was also a significant clonal expansion of CD8+T cells but not CD4+T cells. Thus, the diversity of the CD8+T-TCR $\beta$  pool might be a predictor of ACLF prognosis. To summarize, single-cell studies assisted by functional experiments might help in understanding the immunological aspect of liver failure and reveal new methods for treating this disease.

### **HBV-associated liver cancer**

Tumorigenesis is a complex pathological process characterized by intratumoral and intertumor heterogeneity and changes in the immune microenvironment.<sup>88</sup> HCC is the most prevalent liver tumor due to HBV infection. Here, we summarized the studies based on scRNA-seq related to human HCC in the last five years (Table 2). Tumor heterogeneity and the complexity of the immune microenvironment associated with HCC are the main reasons for its drug resistance and low clinical cure rate.<sup>89</sup> To elucidate the immune landscape of HCC, Zheng *et al.*<sup>55</sup> defined 11 functionally characterized T cell subsets and their characteristic genes by combining TCR-seq and scRNA-seq. The gene known as *Layilin* is functionally associated with tumor-characteristic CD8+T cells and might serve as a new target for immunotherapy in HCC. Wu *et al.*<sup>90</sup> constructed a complete spatial ecological landscape of tumor nodules in a comprehensive genome-wide transcriptome analysis of primary HCC cells, including normal liver tissue, tumor margins, and tumor regions. They found that the tumor envelope might influence the spatial distribution and growth of tumor cells, and HCC heterogeneity can even exist in a single tumor nodule, which might contribute to the ineffectiveness of drug therapy for HCC. Tumor marginal cells are most responsive to their local microenvironment and are highly aggressive and metastatic.<sup>91</sup> In 2022, the relationship between the immunophenotype of human liver-resident lymphocytes and HCC was determined by scRNA-seq.<sup>92</sup> The researchers found that the changes in the HCC cell number and subpopulation were associated with the dysregulation of innate lymphoid cells (ILCs); seven characteristic ILCs were identified, including inducible T cell costimulator (ICOS)+ ILC2a, which were enriched in HCC and suggested a poor prognosis.

The accurate identification of specific cell subtypes and their targeted molecules is conducive to the diagnosis and treatment of liver diseases.<sup>93,94</sup> For example, in the study of intrahepatic cholangiocarcinoma (iCCA), the tagging function of proteomics to complement other histological examinations was used to successfully identify three distinct functional molecular subtypes, of which POE+/C1QB+tumor-associated macrophages (commonly referred to as TAMs) represented a chronic inflammatory marker that might be developed as an immunotherapeutic target for iCCA.<sup>95</sup> In a study on the association between HBV and iCCA, a proteomic analysis of the link between cells from HBV-iCCA patients found that a decrease in intercellular adhesion was more likely to lead to an increase in the epithelial-mesenchymal transition signaling.<sup>96</sup> Additionally, abnormal methylation was found to be a marker for the progression of cirrhosis to HCC, and altered epigenetic modifications were found to affect chromatin structure and function in HCC patients. For example, the viral protein HBx was found to be an epigenetic regulator, playing an important role in HBV-associated HCC.<sup>97-99</sup>

Regarding metastatic liver cancer, an adequate understanding of the immune status of the tumor is needed to detect immune checkpoint suppression. By combining transcriptomic, epigenomic, and proteomic data from five HCC cell lines, Wang *et al.*<sup>100</sup> showed that the metastatic potential of HCC is related to the mesenchymal state of tissues and the proliferation ability of cells. They also found that the hypoxic subtype increases the metastatic ability of cancer cells. The combination of multiomics can help identify the regulatory factors of tumor growth and metastasis and reveal the multifaceted nature of tumor cells and their interaction with the immune microenvironment, which might be used to find therapeutic targets.<sup>101,102</sup> Yang *et al.*<sup>103</sup> combined transcriptome and whole exome sequencing in primary and metastat-



ic HCC and identified an immunosuppressive target known as SLC2A1, which acts by regulating SPP1+macrophages and T cells. To summarize, single-cell technologies provide valuable information for the diagnosis and treatment of liver cancers, and some of these strategies might be implemented soon in the clinic.

### Challenges and future perspectives

The rapid advancement in single-cell sequencing has promoted the identification of the gene structure and gene expression state of single cells at extremely high resolution. With scRNA-seq having a key role, newly developed single-cell approaches have combined genome, epigenome, proteome, spatial transcriptome, and even multiomics to demonstrate the heterogeneity between cells and the changes in the microenvironment of cell populations. Such information might be used for the individualized diagnosis and treatment of diseases and to develop better precision medicine.<sup>104</sup> By focusing on the progression of CHB to end-stage liver disease, our single-cell perspective on the mechanism of disease development can help identify relevant sensitive biomarkers and, thus, arrest disease progression on time.

Advances in technology and analytical techniques have encouraged further development in the field of single-cell technology, but research in this field is still at an early and has not been clinically accessible because of many challenges. First, single-cell studies require fresh liver tissue samples, and the availability and dissociation of samples greatly limit the ability to expand the spectrum of liver diseases.<sup>105</sup> Although snRNA-seq can reduce the effects of enzymatic hydrolysis and mechanical pressure and is suitable for sequencing frozen samples and hard-to-dissociate samples,<sup>24,26,106</sup> its sequencing depth and cell diversity are limited. Thus, snRNA-seq might not be suitable for studying immune cells. In 2023, Yu *et al.*<sup>107</sup> developed a new technology known as "scONE-seq", which can simultaneously sequence the DNA and RNA of single cells in frozen and fresh tissues. This technology was used for identifying one kind of cancer cell in the human brain with genomic mutations and near-normal transcriptomes. Another challenge involves the complexity of data analysis; specifically, defining quality control criteria, removing technical artifacts, and interpreting results are performed by a few technical staff members. Additionally, open source software tools are unsuitable for most clinical analyses. Therefore, in the future, data visualization and computational methods might be performed by artificial intelligence, which can be designed to analyze complex datasets quickly, thus allowing the networked dissemination of the results of single-cell analysis to a wider field. In addition, the current single-cell sequencing data visualization mainly applies principal component analysis, t-distributed stochastic neighbor embedding, and uniform manifold approximation and projection dimensionality reduction methods to project the cell population into two-dimensional space,<sup>108</sup> but in fact, it is difficult for each dimension to correspond to the last biological structure after dimensionality reduction, which will lead to the loss of spatial information in a certain direction of the cell population, so mapping cells to three-dimensional space one by one is the future improvement of single-cell sequencing. Recently, in order to visualize different dataset types in a unified spatial framework, Voytek<sup>109</sup> used a pure data approach of neurological mapping to study neuroscience, which opens new doors for other fields to study the spatial three-dimensional mapping of cells. More computational tools and related methods for ST data analysis and visualization are summarized in this review.<sup>110</sup> It must be mentioned

that the cost of sequencing is an important factor. Therefore, addressing common issues related to single-cell sequencing technologies, such as reducing sequencing costs, simplifying the sequencing process, enhancing sensitivity, and improving resolution, are areas that need to be focused on to further elucidate the molecular mechanisms of the development and progression of different liver diseases.

Novel single-cell techniques combined with multimodal, integrated analytical approaches have expanded the perspective of analysis at different levels within a cell. For example, the newly described technique for studying histone modifications in single cells, known as single-cell chromatin immune cleavage and unmixing sequencing (or scChIX-seq),<sup>111</sup> overcomes the limitation that only one histone modification can be studied in a cell. This technology combines and compares the modification patterns of different histones in a cell to generate corresponding maps. The spatial information of gene expression with high resolution provides accurate information for analyzing the native environment of the lesion. The newly described Spatial Tumor Cell Estimator (commonly referred to as SpaCET)<sup>112</sup> was used in 2023 to identify different types of immune and stromal cells from information on the spatial abundance of tumor cells. Thus, it can be used to study the role of immune cells in the progression of tumors. In addition, full-length transcriptome sequencing technology represented by single-molecule real-time sequencing can be used to obtain the full-length information of transcripts without splicing. Such information can be used to accurately identify gene mutations and find new mutants quickly.<sup>112</sup> Surprisingly, the recently developed droplet-based technology detecting single nucleus information (also referred to as snRandom-seq) allows to capture full-length total RNAs with random primers and detect those noncoding RNA without polyA tails and nascent RNAs.<sup>113</sup>

The application of single-cell approaches for identifying and assessing HCC is the most prominent use of this technology. However, HCC is often the end-stage manifestation of chronic liver disease, and its prognosis is extremely poor; also, only a few patients are suitable for liver transplantation.<sup>114</sup> In China, CHB, cirrhosis-HCC are part of a typical axis of chronic liver disease. Advancements in single-cell technologies are needed for detecting abnormal biomolecules in the early stages of chronic liver disease, especially in the early stages of hepatitis, to arrest the progression of the disease. Some of the latest studies show promise. For example, studies have shown that core transcription factors and pre-mRNA splicing regulators of the hepatocyte phenotype can predict the regression of chronic liver disease.<sup>115</sup> Single-cell analysis in the liver involving parenchymal cells, immune cells, and stromal cells has elucidated the pathological mechanisms of viral infections, parasites, cancers, and other liver injuries.<sup>74</sup> A more in-depth single-cell analysis of macrophages from patients with liver metastasis was performed to identify two markers associated with cancer.<sup>116</sup> In the future, single-cell techniques should be combined with general clinical examinations, and such techniques should be applied beyond basic research to analyze the pathology and physiology of liver disease in patients with different characteristics. Such steps can facilitate precise and individualized treatment of patients with liver disease.

### Conclusions

With scRNA-seq as a core sequencing technology, single-cell approaches have yielded significant discoveries in the physiology and pathology of the liver at an unprecedented high resolution. We comprehensively discuss the application and

findings of the single-cell approach in the progression of CHB to liver cancer or liver failure. These continuously optimized single-cell techniques provide invaluable tools for exploring subpopulations of liver cells and developing new biomarkers. At present, experience in single-cell technology is most extensive in HCC, and we look forward to increased use in other liver diseases, reduced cost, and simplifying the procedures. One day, single-cell technology will become a basic tool for clinical diagnosis, achieving precise treatment of patients with liver disease.

### Funding

This work was supported in part by the National Natural Science Foundation of China (32000892); the Guangdong Basic and Applied Basic Research Foundation (2023A1515010143) and Science and Technology Program of Guangzhou, China (202102010155).

### Conflict of interest

The authors have no conflict of interests related to this publication.

### Author contributions

Made substantial contributions to conceptualizing, visualizing, drafting, reviewing, and editing the review article (GC, WX), made substantial contributions to reviewing of and funding acquisitions for the article (YJ, BL, WX), contributed to discussion and conceptualization (ZL, YC). All authors approved the final version of this manuscript.

### References

- Asrani SK, Devarbhavi H, Eaton J, Kamath PS. Burden of liver diseases in the world. *J Hepatol* 2019;70(1):151–171. doi:10.1016/j.jhep.2018.09.014, PMID:30266282.
- Xiao J, Wang F, Wong NK, He J, Zhang R, Sun R, *et al*. Global liver disease burdens and research trends: Analysis from a Chinese perspective. *J Hepatol* 2019;71(1):212–221. doi:10.1016/j.jhep.2019.03.004, PMID:30871980.
- Kisseleva T, Brenner D. Molecular and cellular mechanisms of liver fibrosis and its regression. *Nat Rev Gastroenterol Hepatol* 2021;18(3):151–166. doi:10.1038/s41575-020-00372-7, PMID:33128017.
- Stravitz RT, Lee WM. Acute liver failure. *Lancet* 2019;394(10201):869–881. doi:10.1016/s0140-6736(19)31894-x, PMID:31498101.
- Wen L, Tang F. Boosting the power of single-cell analysis. *Nat Biotechnol* 2018;36(5):408–409. doi:10.1038/nbt.4131, PMID:29734314.
- Tang F, Barbacioru C, Wang Y, Nordman E, Lee C, Xu N, *et al*. mRNA-Seq whole-transcriptome analysis of a single cell. *Nat Methods* 2009;6(5):377–382. doi:10.1038/nmeth.1315, PMID:19349980.
- Grindberg RV, Yee-Greenbaum JL, McConnell MJ, Novotny M, O’Shaughnessy AL, Lambert GM, *et al*. RNA-sequencing from single nuclei. *Proc Natl Acad Sci U S A* 2013;110(49):19802–19807. doi:10.1073/pnas.1319700110, PMID:24248345.
- Picelli S, Faridani OR, Björklund AK, Winberg G, Sagasser S, Sandberg R. Full-length RNA-seq from single cells using Smart-seq2. *Nat Protoc* 2014;9(1):171–181. doi:10.1038/nprot.2014.006, PMID:24385147.
- Maynard KR, Collado-Torres L, Weber LM, Uyttingco C, Barry BK, Williams SR, *et al*. Transcriptome-scale spatial gene expression in the human dorsolateral prefrontal cortex. *Nat Neurosci* 2021;24(3):425–436. doi:10.1038/s41593-020-00787-0, PMID:33558695.
- Van TM, Blank CU. A user’s perspective on GeoMx(TM) digital spatial profiling. *Immuno-oncol Technol* 2019;1:11–18. doi:10.1016/j.iotech.2019.05.001, PMID:35755324.
- Liu Y, Yang M, Deng Y, Su G, Enniful A, Guo CC, *et al*. High-Spatial-Resolution Multi-Omics Sequencing via Deterministic Barcoding in Tissue. *Cell* 2020;183(6):1665–1681.e18. doi:10.1016/j.cell.2020.10.026, PMID:33188776.
- Budnik B, Levy E, Harmange G, Slavov N. SCoPE-MS: mass spectrometry of single mammalian cells quantifies proteome heterogeneity during cell differentiation. *Genome Biol* 2018;19(1):161. doi:10.1186/s13059-018-1547-5, PMID:30343672.
- Ouldali H, Sarthak K, Ensslen T, Piguot F, Manivet P, Pelta J, *et al*. Electrical recognition of the twenty proteinogenic amino acids using an aerolysin nanopore. *Nat Biotechnol* 2020;38(2):176–181. doi:10.1038/s41587-019-0345-2, PMID:31844293.
- Han L, Wu HJ, Zhu H, Kim KY, Marjani SL, Riestner M, *et al*. Bisulfite-independent analysis of CpG island methylation enables genome-scale stratification of single cells. *Nucleic Acids Res* 2017;45(10):e77. doi:10.1093/nar/gkx026, PMID:28126923.
- Chen X, Miragaia RJ, Natarajan KN, Teichmann SA. A rapid and robust method for single cell chromatin accessibility profiling. *Nat Commun* 2018;9(1):5345. doi:10.1038/s41467-018-07771-0, PMID:30559361.
- Rotem A, Ram O, Shoshitaishvili N, Sperling RA, Goren A, Weitz DA, *et al*. Single-cell ChIP-seq reveals cell subpopulations defined by chromatin state. *Nat Biotechnol* 2015;33(11):1165–1172. doi:10.1038/nbt.3383, PMID:26458175.
- Bartosovic M, Kabbe M, Castelo-Branco G. Single-cell CUT&Tag profiles histone modifications and transcription factors in complex tissues. *Nat Biotechnol* 2021;39(7):825–835. doi:10.1038/s41587-021-00869-9, PMID:33846645.
- Hou Y, Guo H, Cao C, Li X, Hu B, Zhu P, *et al*. Single-cell triple omics sequencing reveals genetic, epigenetic, and transcriptomic heterogeneity in hepatocellular carcinomas. *Cell Res* 2016;26(3):304–319. doi:10.1038/cr.2016.23, PMID:26902283.
- Stoeckius M, Hafemeister C, Stephenson W, Houck-Loomis B, Chattopadhyay PK, Swerdlow H, *et al*. Simultaneous epitope and transcriptome measurement in single cells. *Nat Methods* 2017;14(9):865–868. doi:10.1038/nmeth.4380, PMID:28759029.
- Goetz JJ, Trimarchi JM. Transcriptome sequencing of single cells with Smart-Seq. *Nat Biotechnol* 2012;30(8):763–765. doi:10.1038/nbt.2325, PMID:22871714.
- Macosko EZ, Basu A, Satija R, Nemesh J, Shekhar K, Goldman M, *et al*. Highly Parallel Genome-wide Expression Profiling of Individual Cells Using Nanoliter Droplets. *Cell* 2015;161(5):1202–1214. doi:10.1016/j.cell.2015.05.002, PMID:26000488.
- Gao C, Zhang M, Chen L. The Comparison of Two Single-cell Sequencing Platforms: BD Rhapsody and 10× Genomics Chromium. *Curr Genomics* 2020;21(8):602–609. doi:10.2174/1389202921999200625220812, PMID:33414681.
- Quadri SM. Single-cell western blotting. *Methods Mol Biol* 2015;1312:455–464. doi:10.1007/978-1-4939-2694-7\_46, PMID:26044027.
- Wu H, Kirita Y, Donnelly EL, Humphreys BD. Advantages of Single-Nucleus over Single-Cell RNA Sequencing of Adult Kidney: Rare Cell Types and Novel Cell States Revealed in Fibrosis. *J Am Soc Nephrol* 2019;30(1):23–32. doi:10.1681/asn.2018090912, PMID:30510133.
- Slyper M, Porter CBM, Ashenberg O, Waldman J, Drokhyansky E, Wakiro I, *et al*. Author Correction: A single-cell and single-nucleus RNA-Seq toolbox for fresh and frozen human tumors. *Nat Med* 2020;26(8):1307. doi:10.1038/s41591-020-0976-3, PMID:32587393.
- Ding J, Adiconis X, Simmons SK, Kowalczyk MS, Hession CC, Marjanovic ND, *et al*. Systematic comparison of single-cell and single-nucleus RNA-sequencing methods. *Nat Biotechnol* 2020;38(6):737–746. doi:10.1038/s41587-020-0465-8, PMID:32341560.
- Shalek AK, Satija R, Adiconis X, Gertner RS, Gaublomme JT, Raychowdhury R, *et al*. Single-cell transcriptomics reveals bimodality in expression and splicing in immune cells. *Nature* 2013;498(7453):236–240. doi:10.1038/nature12172, PMID:23685454.
- Jaitin DA, Kenigsberg E, Keren-Shaul H, Elefant N, Paul F, Zaretsky I, *et al*. Massively parallel single-cell RNA-seq for marker-free decomposition of tissues into cell types. *Science* 2014;343(6172):776–779. doi:10.1126/science.1247651, PMID:24531970.
- Stubbington MJT, Lönnberg T, Proserpio V, Clare S, Speak AO, Dougan G, *et al*. T cell fate and clonality inference from single-cell transcriptomes. *Nat Methods* 2016;13(4):329–332. doi:10.1038/nmeth.3800, PMID:26950746.
- Lyu M, Wang S, Gao K, Wang L, Zhu X, Liu Y, *et al*. Dissecting the Landscape of Activated CMV-Stimulated CD4+ T Cells in Humans by Linking Single-Cell RNA-Seq With T-Cell Receptor Sequencing. *Front Immunol* 2021;12:779961. doi:10.3389/fimmu.2021.779961, PMID:34950144.
- Zheng L, Qin S, Si W, Wang A, Xing B, Gao R, *et al*. Pan-cancer single-cell landscape of tumor-infiltrating T cells. *Science* 2021;374(6574):abe6474. doi:10.1126/science.abe6474, PMID:34914499.
- Ziegenhain C, Vieth B, Parekh S, Reinius B, Guillaumet-Adkins A, Smets M, *et al*. Comparative Analysis of Single-Cell RNA Sequencing Methods. *Mol Cell* 2017;65(4):631–643.e4. doi:10.1016/j.molcel.2017.01.023, PMID:28212749.
- Marx V. Method of the Year: spatially resolved transcriptomics. *Nat Methods* 2021;18(1):9–14. doi:10.1038/s41592-020-01033-y, PMID:33408395.
- Kwon S. Single-molecule fluorescence in situ hybridization: quantitative imaging of single RNA molecules. *BMB Rep* 2013;46(2):65–72. doi:10.5483/bmbrep.2013.46.2.016, PMID:23433107.
- Piñeiro AJ, Houser AE, Ji AL. Research Techniques Made Simple: Spatial Transcriptomics. *J Invest Dermatol* 2022;142(4):993–1001.e1. doi:10.1016/j.jid.2021.12.014, PMID:35331388.
- Darmanis S, Gallant CJ, Marinescu VD, Niklasson M, Segerman A, Flamourakis G, *et al*. Simultaneous Multiplexed Measurement of RNA and Proteins in Single Cells. *Cell Rep* 2016;14(2):380–389. doi:10.1016/j.celrep.2015.12.021, PMID:26748716.
- Piehowski PD, Zhu Y, Bramer LM, Stratton KG, Zhao R, Orton DJ, *et al*. Automated mass spectrometry imaging of over 2000 proteins from tissue sections at 100-µm spatial resolution. *Nat Commun* 2020;11(1):8. doi:10.1038/s41467-019-13858-z, PMID:31911630.
- Deng Y, Xie M, Li Q, Xu X, Ou W, Zhang Y, *et al*. Targeting Mitochondria-Inflammation Circuit by β-Hydroxybutyrate Mitigates HfPEF. *Circ Res* 2021;128(2):232–245. doi:10.1161/circresaha.120.317933, PMID:33176578.
- Wu M, Chen Y, Xia H, Wang C, Tan CY, Cai X, *et al*. Transcriptional and proteomic insights into the host response in fatal COVID-19 cases.

- Proc Natl Acad Sci U S A 2020;117(45):28336–28343. doi:10.1073/pnas.2018030117, PMID:33082228.
- [40] Farlik M, Sheffield NC, Nuzzo A, Datlinger P, Schönegger A, Klughammer J, *et al*. Single-cell DNA methylome sequencing and bioinformatic inference of epigenomic cell-state dynamics. *Cell Rep* 2015;10(8):1386–1397. doi:10.1016/j.celrep.2015.02.001, PMID:25732828.
- [41] Mulqueen RM, Pokholok D, Norberg SJ, Torkenczy KA, Fields AJ, Sun D, *et al*. Highly scalable generation of DNA methylation profiles in single cells. *Nat Biotechnol* 2018;36(5):428–431. doi:10.1038/nbt.4112, PMID:29644997.
- [42] Jin W, Tang Q, Wan M, Cui K, Zhang Y, Ren G, *et al*. Genome-wide detection of DNase I hypersensitive sites in single cells and FFPE tissue samples. *Nature* 2015;528(7580):142–146. doi:10.1038/nature15740, PMID:26605532.
- [43] Carter B, Ku WL, Kang JY, Hu G, Perrie J, Tang Q, *et al*. Mapping histone modifications in low cell number and single cells using antibody-guided chromatin tagmentation (ACT-seq). *Nat Commun* 2019;10(1):3747. doi:10.1038/s41467-019-11559-1, PMID:31431618.
- [44] Ku WL, Pan L, Cao Y, Gao W, Zhao K. Profiling single-cell histone modifications using indexing chromatin immunocleavage sequencing. *Genome Res* 2021;31(10):1831–1842. doi:10.1101/gr.260893.120, PMID:33853847.
- [45] Preissl S, Gaulton KJ, Ren B. Characterizing cis-regulatory elements using single-cell epigenomics. *Nat Rev Genet* 2023;24(1):21–43. doi:10.1038/s41576-022-00509-1, PMID:35840754.
- [46] Ben-Moshe S, Itzkovitz S. Spatial heterogeneity in the mammalian liver. *Nat Rev Gastroenterol Hepatol* 2019;16(7):395–410. doi:10.1038/s41575-019-0134-x, PMID:30936469.
- [47] Aizarani N, Saviano A, Sagar, Maillly L, Durand S, Herman JS, *et al*. A human liver cell atlas reveals heterogeneity and epithelial progenitors. *Nature* 2019;572(7768):199–204. doi:10.1038/s41586-019-1373-2, PMID:31292543.
- [48] Zhang T, Zhang J, You X, Liu Q, Du Y, Gao Y, *et al*. Hepatitis B virus X protein modulates oncogene Yes-associated protein by CREB to promote growth of hepatoma cells. *Hepatology* 2012;56(6):2051–2059. doi:10.1002/hep.25899, PMID:22707013.
- [49] Gao Q, Zhu H, Dong L, Shi W, Chen R, Song Z, *et al*. Integrated Proteogenomic Characterization of HBV-Related Hepatocellular Carcinoma. *Cell* 2019;179(2):561–577.e22. doi:10.1016/j.cell.2019.08.052, PMID:31585088.
- [50] Le C, Liu Y, López-Orozco J, Joyce MA, Le XC, Tyrrell DL. CRISPR Technology Incorporated with Single-Cell RNA Sequencing for Studying Hepatitis B Infection. *Anal Chem* 2021;93(31):10756–10761. doi:10.1021/acs.analchem.1c02227, PMID:34238316.
- [51] Xu H, Yu H, Zheng F, Zhang C, Cai W, Zhang X, *et al*. Analyzing the gene regulatory network in hepatitis B patients by single-cell ATAC sequencing. *Clin Rheumatol* 2022;41(11):3513–3524. doi:10.1007/s10067-022-06310-z, PMID:35902485.
- [52] Ramachandran P, Dobie R, Wilson-Kanamori JR, Dora EF, Henderson BEP, Luu NT, *et al*. Resolving the fibrotic niche of human liver cirrhosis at single-cell level. *Nature* 2019;575(7783):512–518. doi:10.1038/s41586-019-1631-3, PMID:31597160.
- [53] Zhang P, Li H, Peng B, Zhang Y, Liu K, Cheng K, *et al*. Single-cell RNA transcriptomics reveals differences in the immune status of alcoholic and hepatitis B virus-related liver cirrhosis. *Front Endocrinol (Lausanne)* 2023;14:1132085. doi:10.3389/fendo.2023.1132085, PMID:36817578.
- [54] Zhang P, Li H, Zhou C, Liu K, Peng B, She X, *et al*. Single-Cell RNA Transcriptomics Reveals the State of Hepatic Lymphatic Endothelial Cells in Hepatitis B Virus-Related Acute-on-Chronic Liver Failure. *J Clin Med* 2022;11(10):2910. doi:10.3390/jcm11102910, PMID:35629036.
- [55] Zheng C, Zheng L, Yoo JK, Guo H, Zhang Y, Guo X, *et al*. Landscape of Infiltrating T Cells in Liver Cancer Revealed by Single-Cell Sequencing. *Cell* 2017;169(7):1342–1356.e16. doi:10.1016/j.cell.2017.05.035, PMID:28622514.
- [56] Fred RG, Steen Pedersen J, Thompson JJ, Lee J, Timshel PN, Stender S, *et al*. Single-cell transcriptome and cell type-specific molecular pathways of human non-alcoholic steatohepatitis. *Sci Rep* 2022;12(1):13484. doi:10.1038/s41598-022-16754-7, PMID:35931712.
- [57] Ho DW, Tsui YM, Chan LK, Sze KM, Zhang X, Cheu JW, *et al*. Single-cell RNA sequencing shows the immunosuppressive landscape and tumor heterogeneity of HBV-associated hepatocellular carcinoma. *Nat Commun* 2021;12(1):3684. doi:10.1038/s41467-021-24010-1, PMID:34140495.
- [58] Zheng H, Pomyen Y, Hernandez MO, Li C, Livak F, Tang W, *et al*. Single-cell analysis reveals cancer stem cell heterogeneity in hepatocellular carcinoma. *Hepatology* 2018;68(1):127–140. doi:10.1002/hep.29778, PMID:29315726.
- [59] Zhang Q, Lou Y, Yang J, Wang J, Feng J, Zhao Y, *et al*. Integrated multiomic analysis reveals comprehensive tumour heterogeneity and novel immunophenotypic classification in hepatocellular carcinomas. *Gut* 2019;68(11):2019–2031. doi:10.1136/gutjnl-2019-318912, PMID:31227589.
- [60] Ma L, Heinrich S, Wang L, Keggenhoff FL, Khatib S, Forgues M, *et al*. Multiregional single-cell dissection of tumor and immune cells reveals stable lock-and-key features in liver cancer. *Nat Commun* 2022;13(1):7533. doi:10.1038/s41467-022-35291-5, PMID:36476645.
- [61] Sun Y, Wu L, Zhong Y, Zhou K, Hou Y, Wang Z, *et al*. Single-cell landscape of the ecosystem in early-relapse hepatocellular carcinoma. *Cell* 2021;184(2):404–421.e16. doi:10.1016/j.cell.2020.11.041, PMID:33357445.
- [62] Xue R, Zhang Q, Cao Q, Kong R, Xiang X, Liu H, *et al*. Liver tumour immune microenvironment subtypes and neutrophil heterogeneity. *Nature* 2022;612(7938):141–147. doi:10.1038/s41586-022-05400-x, PMID:36352227.
- [63] Zhang C, Li J, Cheng Y, Meng F, Song JW, Fan X, *et al*. Single-cell RNA sequencing reveals intrahepatic and peripheral immune characteristics related to disease phases in HBV-infected patients. *Gut* 2023;72(1):153–167. doi:10.1136/gutjnl-2021-325915, PMID:35361683.
- [64] Halpern KB, Shenhav R, Matcovitch-Natan O, Toth B, Lemze D, Golan M, *et al*. Single-cell spatial reconstruction reveals global division of labour in the mammalian liver. *Nature* 2017;542(7641):352–356. doi:10.1038/nature21065, PMID:28166538.
- [65] Brancale J, Vilarinho S. A single cell gene expression atlas of 28 human livers. *J Hepatol* 2021;75(1):219–220. doi:10.1016/j.jhep.2021.03.005, PMID:34016468.
- [66] Hou X, Yang Y, Li P, Zeng Z, Hu W, Zhe R, *et al*. Integrating Spatial Transcriptomics and Single-Cell RNA-seq Reveals the Gene Expression Profiling of the Human Embryonic Liver. *Front Cell Dev Biol* 2021;9:652408. doi:10.3389/fcell.2021.652408, PMID:34095116.
- [67] Gao S, Shi Q, Zhang Y, Liang G, Kang Z, Huang B, *et al*. Identification of HSC/MPP expansion units in fetal liver by single-cell spatiotemporal transcriptomics. *Cell Res* 2022;32(1):38–53. doi:10.1038/s41422-021-00540-7, PMID:34341490.
- [68] Wesley BT, Ross ADB, Muraro D, Miao Z, Saxton S, Tomaz RA, *et al*. Single-cell atlas of human liver development reveals pathways directing hepatic cell fates. *Nat Cell Biol* 2022;24(10):1487–1498. doi:10.1038/s41556-022-00989-7, PMID:36109670.
- [69] Inverso D, Shi J, Lee KH, Jakab M, Ben-Moshe S, Kulkarni SR, *et al*. A spatial vascular transcriptomic, proteomic, and phosphoproteomic atlas unveils an angiocrine Tie-Wnt signaling axis in the liver. *Dev Cell* 2021;56(11):1677–1693.e10. doi:10.1016/j.devcel.2021.05.001, PMID:34038707.
- [70] Ölander M, Wiśniewski JR, Artursson P. Cell-type-resolved proteomic analysis of the human liver. *Liver Int* 2020;40(7):1770–1780. doi:10.1111/liv.14452, PMID:32243721.
- [71] Williams M, Bonnardel J, Haest B, Vanderborcht B, Wagner C, Remmerie A, *et al*. Spatial proteogenomics reveals distinct and evolutionarily conserved hepatic macrophage niches. *Cell* 2022;185(2):379–396.e38. doi:10.1016/j.cell.2021.12.018, PMID:35201063.
- [72] MacParland SA, Liu JC, Ma XZ, Innes BT, Bartczak AM, Gage BK, *et al*. Single cell RNA sequencing of human liver reveals distinct intrahepatic macrophage populations. *Nat Commun* 2018;9(1):4383. doi:10.1038/s41467-018-06318-7, PMID:30348985.
- [73] Zhao J, Zhang S, Liu Y, He X, Qu M, Xu G, *et al*. Single-cell RNA sequencing reveals the heterogeneity of liver-resident immune cells in human. *Cell Discov* 2020;6:22. doi:10.1038/s41421-020-0157-z, PMID:32351704.
- [74] Ray K. Zones of immune defence in the liver. *Nat Rev Gastroenterol Hepatol* 2021;18(2):81. doi:10.1038/s41575-020-00403-3, PMID:33335281.
- [75] Bukhari S, Henick BS, Winchester RJ, Lerrer S, Adam K, Gartshsteyn Y, *et al*. Single-cell RNA sequencing reveals distinct T cell populations in immune-related adverse events of checkpoint inhibitors. *Cell Rep Med* 2023;4(1):100868. doi:10.1016/j.xcrm.2022.100868, PMID:36513074.
- [76] Nguyen MH, Wong G, Gan E, Kao JH, Dusheiko G. Hepatitis B Virus: Advances in Prevention, Diagnosis, and Therapy. *Clin Microbiol Rev* 2020;33(2):e00046–19. doi:10.1128/CMR.00046-19, PMID:32102898.
- [77] Wang D, Fu B, Wei H. Advances in Immunotherapy for Hepatitis B. *Pathogens* 2022;11(10):1116. doi:10.3390/pathogens11101116, PMID:36297173.
- [78] Zhong S, Li Q, Wen C, Li Y, Zhou Y, Jin Z, *et al*. Interferon  $\alpha$  facilitates anti-HBV cellular immune response in a B cell-dependent manner. *Antiviral Res* 2022;207:105420. doi:10.1016/j.antiviral.2022.105420, PMID:36165866.
- [79] Wen C, Dong Z, Wang Y, Ye G, Ma Y, Yi X, *et al*. CTLA4(+)-CD4(+)-CXCR5(-) FOXP3(+) T cells associate with unfavorable outcome in patients with chronic HBV infection. *BMC Immunol* 2023;24(1):3. doi:10.1186/s12865-022-00537-w, PMID:36635631.
- [80] Li Y, Tang L, Guo L, Chen C, Gu S, Zhou Y, *et al*. CXCL13-mediated recruitment of intrahepatic CXCR5(+)CD8(+) T cells favors viral control in chronic HBV infection. *J Hepatol* 2020;72(3):420–430. doi:10.1016/j.jhep.2019.09.031, PMID:31610223.
- [81] Mederacke YS, Nienen M, Jarek M, Geffers R, Hupa-Breier K, Babel N, *et al*. T cell receptor repertoires within liver allografts are different to those in the peripheral blood. *J Hepatol* 2021;74(5):1167–1175. doi:10.1016/j.jhep.2020.12.014, PMID:33347951.
- [82] Schwabe RF, Tabas I, Pajvani UB. Mechanisms of Fibrosis Development in Nonalcoholic Steatohepatitis. *Gastroenterology* 2020;158(7):1913–1928. doi:10.1053/j.gastro.2019.11.311, PMID:32044315.
- [83] Terkelsen MK, Bendixen SM, Hansen D, Scott EAH, Moeller AF, Nielsen R, *et al*. Transcriptional Dynamics of Hepatic Sinusoid-Associated Cells After Liver Injury. *Hepatology* 2020;72(6):2119–2133. doi:10.1002/hep.31215, PMID:32145072.
- [84] Yang L, Zhen L, Li Z, Zhu S, Xu W, Luo Q, *et al*. Human liver tissue transcriptomics revealed immunometabolic disturbances and related biomarkers in hepatitis B virus-related acute-on-chronic liver failure. *Front Microbiol* 2022;13:1080484. doi:10.3389/fmicb.2022.1080484, PMID:36532504.
- [85] Li J, Liang X, Jiang J, Yang L, Xin J, Shi D, *et al*. PMBC transcriptomics identifies immune-metabolism disorder during the development of HBV-AICLF. *Gut* 2022;71(1):163–175. doi:10.1136/gutjnl-2020-323395, PMID:33431576.
- [86] Yao J, Liu T, Zhao Q, Ji Y, Bai J, Wang H, *et al*. Genetic landscape and immune mechanism of monocytes associated with the progression of acute-on-chronic liver failure. *Hepatology Int* 2023;17(3):676–688. doi:10.1007/s12072-022-10472-y, PMID:36626090.
- [87] Shen G, Sun S, Huang J, Deng H, Xu Y, Wang Z, *et al*. Dynamic changes of T cell receptor repertoires in patients with hepatitis B virus-related acute-on-chronic liver failure. *Hepatology Int* 2020;14(1):47–56. doi:10.1007/s12072-019-10008-x, PMID:31872330.
- [88] Jerby-Arnon L, Shah P, Cuoco MS, Rodman C, Su MJ, Melms JC, *et al*. A Cancer Cell Program Promotes T Cell Exclusion and Resistance to

- Checkpoint Blockade. *Cell* 2018;175(4):984–997.e24. doi:10.1016/j.cell.2018.09.006, PMID:30388455.
- [89] Aliya S, Lee H, Alhammadi M, Umapathi R, Huh YS. An Overview on Single-Cell Technology for Hepatocellular Carcinoma Diagnosis. *Int J Mol Sci* 2022;23(3):1402. doi:10.3390/ijms23031402, PMID:35163329.
- [90] Wu R, Guo W, Qiu X, Wang S, Sui C, Lian Q, *et al*. Comprehensive analysis of spatial architecture in primary liver cancer. *Sci Adv* 2021;7(51):eabg3750. doi:10.1126/sciadv.abg3750, PMID:34919432.
- [91] Smit MM, Feller KJ, You L, Storteboom J, Begce Y, Beerens C, *et al*. Spatially Annotated Single Cell Sequencing for Unraveling Intratumor Heterogeneity. *Front Bioeng Biotechnol* 2022;10:829509. doi:10.3389/fbioe.2022.829509, PMID:35273957.
- [92] He Y, Luo J, Zhang G, Jin Y, Wang N, Lu J, *et al*. Single-cell profiling of human CD127(+) innate lymphoid cells reveals diverse immune phenotypes in hepatocellular carcinoma. *Hepatology* 2022;76(4):1013–1029. doi:10.1002/hep.32444, PMID:35243668.
- [93] Wernberg CW, Ravnskjaer K, Lauridsen MM, Thiele M. The Role of Diagnostic Biomarkers, Omics Strategies, and Single-Cell Sequencing for Nonalcoholic Fatty Liver Disease in Severely Obese Patients. *J Clin Med* 2021;10(5):930. doi:10.3390/jcm10050930, PMID:33804302.
- [94] Liu Z, Wang Y, Yao Y, Fang Z, Miao QR, Ye M. Quantitative proteomic and phosphoproteomic studies reveal novel 5-fluorouracil resistant targets in hepatocellular carcinoma. *J Proteomics* 2019;208:103501. doi:10.1016/j.jprot.2019.103501, PMID:31454556.
- [95] Bao X, Li Q, Chen J, Chen D, Ye C, Dai X, *et al*. Molecular Subgroups of Intrahepatic Cholangiocarcinoma Discovered by Single-Cell RNA Sequencing-Assisted Multiomics Analysis. *Cancer Immunol Res* 2022;10(7):811–828. doi:10.1158/2326-6066.Cir-21-1101, PMID:35604302.
- [96] Shen Y, Xu S, Ye C, Li Q, Chen R, Wu W, *et al*. Proteomic and single-cell landscape reveals novel pathogenic mechanisms of HBV-infected intrahepatic cholangiocarcinoma. *iScience* 2023;26(2):106003. doi:10.1016/j.isci.2023.106003, PMID:36852159.
- [97] Nagaraju GP, Dariya B, Kasa P, Peela S, El-Rayes BF. Epigenetics in hepatocellular carcinoma. *Semin Cancer Biol* 2022;86(Pt 3):622–632. doi:10.1016/j.semcancer.2021.07.017, PMID:34324953.
- [98] Wolinska E, Skrzypczak M. Epigenetic Changes Affecting the Development of Hepatocellular Carcinoma. *Cancers (Basel)* 2021;13(16):4237. doi:10.3390/cancers13164237, PMID:34439391.
- [99] Taniai M. Alcohol and hepatocarcinogenesis. *Clin Mol Hepatol* 2020;26(4):736–741. doi:10.3350/cmh.2020.0203, PMID:33053943.
- [100] Wang S, Xie J, Zou X, Pan T, Yu Q, Zhuang Z, *et al*. Single-cell multiomics reveals heterogeneous cell states linked to metastatic potential in liver cancer cell lines. *iScience* 2022;25(3):103857. doi:10.1016/j.isci.2022.103857, PMID:35198910.
- [101] Chen S, Teichmann SA. Completing the cancer jigsaw puzzle with single-cell multiomics. *Nat Cancer* 2021;2(12):1260–1262. doi:10.1038/s43018-021-00306-5, PMID:35121921.
- [102] Wang H, Jiang W, Wang H, Wei Z, Li H, Yan H, *et al*. Identification of Mutation Landscape and Immune Cell Component for Liver Hepatocellular Carcinoma Highlights Potential Therapeutic Targets and Prognostic Markers. *Front Genet* 2021;12:737965. doi:10.3389/fgene.2021.737965, PMID:34603396.
- [103] Yang S, Qian L, Li Z, Li Y, Bai J, Zheng B, *et al*. Integrated Multi-Omics Landscape of Liver Metastases. *Gastroenterology* 2023;164(3):407–423.e17. doi:10.1053/j.gastro.2022.11.029, PMID:36574521.
- [104] Gohil SH, Iorgulescu JB, Braun DA, Keskin DB, Livak KJ. Applying high-dimensional single-cell technologies to the analysis of cancer immunotherapy. *Nat Rev Clin Oncol* 2021;18(4):244–256. doi:10.1038/s41571-020-00449-x, PMID:33277626.
- [105] van den Brink SC, Sage F, Vértesy Á, Spanjaard B, Peterson-Maduro J, Baron CS, *et al*. Single-cell sequencing reveals dissociation-induced gene expression in tissue subpopulations. *Nat Methods* 2017;14(10):935–936. doi:10.1038/nmeth.4437, PMID:28960196.
- [106] Slyper M, Porter CBM, Ashenberg O, Waldman J, Drokhylyansky E, Wakiro I, *et al*. A single-cell and single-nucleus RNA-Seq toolbox for fresh and frozen human tumors. *Nat Med* 2020;26(5):792–802. doi:10.1038/s41591-020-0844-1, PMID:32405060.
- [107] Yu L, Wang X, Mu Q, Tam SST, Loi DSC, Chan AKY, *et al*. scONE-seq: A single-cell multi-omics method enables simultaneous dissection of phenotype and genotype heterogeneity from frozen tumors. *Sci Adv* 2023;9(1):eabp8901. doi:10.1126/sciadv.abp8901, PMID:36598983.
- [108] Kulkarni A, Anderson AG, Merullo DP, Konopka G. Beyond bulk: a review of single cell transcriptomics methodologies and applications. *Curr Opin Biotechnol* 2019;58:129–136. doi:10.1016/j.copbio.2019.03.001, PMID:30978643.
- [109] Voytek B. The data science future of neuroscience theory. *Nat Methods* 2022;19(11):1349–1350. doi:10.1038/s41592-022-01630-z, PMID:36203017.
- [110] Waylen LN, Nim HT, Martelotto LG, Ramialison M. From whole-mount to single-cell spatial assessment of gene expression in 3D. *Commun Biol* 2020;3(1):602. doi:10.1038/s42003-020-01341-1, PMID:33097816.
- [111] Yeung J, Florescu M, Zeller P, de Barbanson BA, Wellenstein MD, van Oudenaarden A. scChIX-seq infers dynamic relationships between histone modifications in single cells. *Nat Biotechnol* 2023;41(6):813–823. doi:10.1038/s41587-022-01560-3, PMID:36593403.
- [112] Ru B, Huang J, Zhang Y, Aldape K, Jiang P. Estimation of cell lineages in tumors from spatial transcriptomics data. *Nat Commun* 2023;14(1):568. doi:10.1038/s41467-023-36062-6, PMID:36732531.
- [113] Xu Z, Zhang T, Chen H, Zhu Y, Lv Y, Zhang S, *et al*. High-throughput single nucleus total RNA sequencing of formalin-fixed paraffin-embedded tissues by snRandom-seq. *Nat Commun* 2023;14(1):2734. doi:10.1038/s41467-023-38409-5, PMID:37173341.
- [114] Acharya C, Bajaj JS. Chronic Liver Diseases and the Microbiome-Translating Our Knowledge of Gut Microbiota to Management of Chronic Liver Disease. *Gastroenterology* 2021;160(2):556–572. doi:10.1053/j.gastro.2020.10.056, PMID:33253686.
- [115] Berasain C, Arechederra M, Argemí J, Fernández-Barrera MG, Avila MA. Loss of liver function in chronic liver disease: An identity crisis. *J Hepatol* 2023;78(2):401–414. doi:10.1016/j.jhep.2022.09.001, PMID:36115636.
- [116] Cortese N, Carriero R, Barbagallo M, Putignano AR, Costa G, Giavazzi F, *et al*. High-Resolution Analysis of Mononuclear Phagocytes Reveals GP-NMB as a Prognostic Marker in Human Colorectal Liver Metastasis. *Cancer Immunol Res* 2023;11(4):405–420. doi:10.1158/2326-6066.Cir-22-0462, PMID:36652202.