

RESEARCH ARTICLE

Open Access

Evaluation of the anti-*Mycobacterium tuberculosis* activity and *in vivo* acute toxicity of *Annona sylvatica*

Rafaele CP Araujo¹, Francisco AR Neves², Anelise SN Formagio³, Candida AL Kassuya¹, Maria EA Stefanello⁴, Vanessa V Souza¹, Fernando R Pavan⁵ and Julio Croda^{1*}

Abstract

Background: The recent emergence of extensively multidrug-resistant *Mycobacterium tuberculosis* strains has further complicated the control of tuberculosis. There is an urgent need for the development of new molecular candidates antitubercular drugs. Medicinal plants have been an excellent source of leads for the development of drugs. The aim of this study was to evaluate the *in vitro* activity of 28 alcoholic extracts and essential oils of native and exotic Brazilian plants against *Mycobacterium tuberculosis* and to further study these extracts through chemical fractionation, the isolation of their constituents, and an evaluation of the *in vivo* acute toxicity of the active extracts. To the best of our knowledge this is the first chemical characterization, antituberculosis activity and acute toxicity evaluation of *Annona sylvatica*.

Methods: The anti-mycobacterial activity of these extracts and their constituent compounds was evaluated using the resazurin reduction microtiter assay (REMA). To investigate the acute toxicity of these extracts *in vivo*, female Swiss mice were treated with the extracts at doses of 500, 1000 and 2000 mg · kg⁻¹ of body weight. The extracts were characterized by LC-MS, and the constituents were isolated and identified by chromatographic analysis of spectroscopic data.

Results: Of the 28 extracts, the methanol extract obtained from the leaves of *Annona sylvatica* showed anti-mycobacterial activity with an minimal inhibitory concentration (MIC) of 184.33 µg/mL, and the ethyl acetate fraction (EAF) resulting from liquid-liquid partitioning of the *A. sylvatica* extract showed an MIC of 115.2 µg/mL. The characterization of this extract by LC-MS identified flavonoids and acetogenins as its main constituents. The phytochemical study of the *A. sylvatica* EAF resulted in the isolation of quercetin, luteolin, and almunequin.

Conclusions: Among the compounds isolated from the EAF, luteolin and almunequin were the most promising, with MICs of 236.8 µg/mL (827.28 µM) and 209.9 µg/mL (328.48 µM), respectively. The acute administration of the EAF fraction in doses of 500, 1000, and 2000 mg · kg⁻¹ of body weight did not cause signs of toxicity in the treated animals.

Keywords: *Mycobacterium tuberculosis*, *Annona sylvatica*, Resazurin reduction toxicity, Luteolin, Almunequin

Background

Tuberculosis remains an important public health problem and a major cause of death worldwide; it is responsible for approximately one million deaths every year [1,2]. Due to the reduced effectiveness of current drugs resulting from the emergence of multidrug-resistant strains (MDRTB) and co-infection with HIV, there is an urgent need to develop new natural or synthetic antitubercular drugs [3-5].

The use of medicinal plants is important throughout the world, especially in traditional or alternative medicine. The search for active plant-derived compounds is a modern approach to drug discovery, especially in tropical regions with abundant flora. In underdeveloped or developing countries, medicines derived from plants are important weapons against serious diseases. Traditional medicine has enabled the treatment of common illnesses in approximately 60 to 80% of the world population [6,7]. The extraction of compounds from plants and the testing of the

* Correspondence: juliocroda@ufgd.edu.br

¹Faculty of Health Sciences, Federal University of Grande Dourados, Rodovia Dourados – Itaúm, Km 12, Dourados, Mato Grosso do Sul 79804-970, Brazil
Full list of author information is available at the end of the article

biological activity of those extracts and/or compounds represent the first steps toward identifying natural products or semi-synthetic derivatives that may provide new antitubercular drugs [8-12].

Research in the area of natural products has intensified, especially in the search for compounds and plant species that are active against *Mycobacterium tuberculosis* and with the development of easier, faster, and safer screening techniques [13-26]. Previous studies have demonstrated that several plants are active against *M. tuberculosis*, such as *Clavija procera* B. Ståhl, which has been shown to be active even against resistant strains [14]; *Abelmoschus esculentus* Moench; *Faurea saligna* Harv; *Parinari curatellifolia* Planch ex Benth [15]; *Maerua edulis* (Gilg & Gilg-Ben.) DeWolf; *Securidaca longepedunculata* Fres.; *Tabernaemontana elegans* Stapf; *Zanthoxylum capense* (Thunb.) Harv. [16]; *Aristolochia taliscana* Hook [17]; and *Acorus calamus* L. var. *americanus* [18].

According to the screening program for new antitubercular drugs developed by the National Institutes of Health of the United States, all compounds must be used in both *in vitro* and *in vivo* models to evaluate their potential as antitubercular agents [27].

This study was conducted as a preliminary *in vitro* screening of 28 plant extracts and three essential oils against *M. tuberculosis* using the REMA assay. The characterization of the active extract by LC-MS, the isolation of the main constituents of this extract, and the subsequent evaluation of the anti-*M. tuberculosis* activity and *in vivo* acute toxicity of these extracts were also performed.

Methods

Plant material

Different species of Asteraceae, Anacardiaceae, Annonaceae, Bignoniaceae, Euphorbiaceae, Fabaceae, Gesneriaceae, Malvaceae, Meliaceae, Myrtaceae, Rubiaceae, Sapindaceae, and Tropaeolaceae were collected in Dourados, Mato Grosso do Sul, and Maringá and Curitiba, Paraná, Brazil. The plants were identified by Dr. Armando Carlos Cervi, Dr. Maria Conceição de Souza, and Dr. Zefa Valdevina Pereira. A voucher specimen of each species was identified and deposited in the herbarium of each institution (Table 1).

Preparation of extracts

The plants were air-dried at room temperature and ground with a pestle and mortar. Approximately 300 g of each sample was then exhaustively extracted by macerating the sample with 1.5 L of the appropriate solvents (Table 1) at room temperature (five times for each species at 48 h intervals). The crude extract was then isolated by the evaporation of the solvent under vacuum on a rotary evaporator. For subsequent studies,

the extracts were diluted in DMSO (dimethyl sulfoxide) at 10,000 µg/mL.

Fractionation and compound isolation

An extract that exhibited potential activity against *Mycobacterium tuberculosis* was dissolved in methanol:water (1:1) and partitioned with chloroform and ethyl acetate to yield the chloroform fraction (CF), ethyl acetate fraction (EAF), and hydromethanol fraction (HMF) after the evaporation of the solvents on a rotary evaporator. The resulting EAF (2.3 g) was applied to a chromatographic column on silica gel 60 (0.063-0.200 mm) (70–230 mesh) and silica flash (35-75 µm) (220–440 mesh) and eluted with a mixture of chloroform:methanol in increasing polarity, yielding 54 fractions of 10 mL each. After a thin-layer chromatography (TLC) comparison, the fractions with similar TLC patterns were grouped into ten sub-fractions. Sub-fraction 5 (173 mg) was fractionated on a Sephadex LH-20 column using H₂O, H₂O:MeOH 1:1, and MeOH; this process yielded two known flavonoids (6.5 mg and 5.8 mg). A series of experiments was conducted to isolate the acetogenin. Sub-fraction 8 (126 mg) was purified by flash chromatography on silica gel 60 (0.063-0.200 mm) (70–230 mesh) and silica flash (35-75 µm) (220–440 mesh) to yield almunequin (8.4 mg).

The isolated compounds were identified by an analysis of their nuclear magnetic resonance (NMR) data. NMR measurements were conducted on a Varian Mercury Plus BB spectrometer operating at 300 MHz for ¹H and 75.5 MHz for ¹³C using CD₃OD and CDCl₃ as the solvents and tetramethylsilane (TMS) as the internal standard. The ¹H NMR and ¹³C NMR data are in agreement with the reported data for quercetin [43], luteolin [44], and almunequin [32,45]:

Quercetin ¹H NMR (300 MHz, CD₃OD) δ ppm: 7.65 (1H, d, *J* = 1.8 Hz), 7.00 (1H, d, *J* = 8.9; 2.0 Hz), 6.9 (1H, d, *J* = 8.9 Hz), 6.43 (1H, d, *J* = 2.1 Hz), 6.20 (1H, d, *J* = 2.1 Hz). ¹³C NMR (75.5 MHz, CD₃OD) δ ppm: 158.5, 135.6, 179.4, 163.0, 99.9, 166.2, 94.8, 159.3, 104.7, 123.5, 117.6, 145.8, 149.3, 116.5, 123.1.

Luteolin ¹H NMR (300 MHz, CD₃OD) δ ppm: 7.43 (1H, d, *J* = 2 Hz), 6.68 (1H, d, *J* = 8.4; 1.8 Hz), 6.87 (1H, d, *J* = 8.4 Hz), 6.39 (1H, d, *J* = 2.1 Hz), 6.20 (1H, d, *J* = 2.1 Hz). ¹³C NMR (75.5 MHz, CD₃OD) δ ppm: 158.5, 135.6, 179.4, 163.0, 99.9, 166.2, 94.8, 159.3, 104.7, 123.5, 117.6, 145.8, 149.3, 116.5, 123.1.

Almunequin ¹H NMR (300 MHz, CDCl₃) δ ppm: 6.99 (1H, d, *J* = 1.2 Hz), 4.99 (1H, *dq*, *J* = 7.0; 1.2 Hz), 3.84 (5H, m), 3.60 (1H, m), 3.41 (2H, m), 2.25 (2H, t, *J* = 6.8 Hz), 2.00-1.60 (4H, m), 1.60-1.20 (m, CH₂), 1.40 (3H, d, *J* = 6.9 Hz, CH₃), 0.87 (3H, t, *J* = 6.8 Hz, CH₃); ¹³C NMR (75.5 MHz, CDCl₃): 176.4, 148.8, 134.2, 83.2, 82.1, 81.9, 79.3, 77.3, 74.4, 72.0, 71.8, 37.3, 37.0, 35.6, 32.3, 29.5, 29.3, 29.1, 28.6, 28.34, 26.1, 25.6, 31.8, 27.3, 25.1, 22.5, 22.0, 19.1, 14.0.

Table 1 Plants (family and specimen), popular name, tested part (solvent), popular indication, and MICs of the extracts tested in this study

Family	Specimen	Popular name	Tested part (solvent)	Popular indication	MIC (µg/mL)
Asteraceae	<i>Gochnatia polymorpha</i> Less. UPCB 30100 ^a	Cambará	Bark (e)	Antitussive [28]	>500
Anacardiaceae	<i>Schinus terebinthifolius</i> Raddi. DDMS 4602 ^b	Pimenta rosa, aroeirinha, Aroeira vermelha	L (m); F (hm), OE	Uterine inflammation [29]	>250
Annonaceae	<i>Annona crassiflora</i> Mart. DDMS4599 ^b	Araticum do cerrado	L (m)	Antidiarrheal [30]	>250
	<i>Annona coriacea</i> Mart. DDMS186 ^b		L (m)	Antidiarrheal [31]	>250
	<i>Annona sylvatica</i> St.Hill DDMS4600 ^b	Araticum	L (m)	Antitussive, antipyretic, antispasmodic [32]	184.33
	<i>Annona cacans</i> Warm. DDMS	Araticum-cagão, Araticum-de-paca	L (m)		>250
	<i>Annona dioica</i> A.St.-Hill DDMS 4598 ^b	Ata-rasteira, Marolo	L (m)	Antirheumatic, antidiarrheal, expectorant [33]	>250
	<i>Duguetia furfuracea</i> A.St.-Hill DDMS 166 ^b	Araticum seco, Araticum-miúdo, Ata-do-mato	L (m)	Antidiarrheal, antispasmodic [34]	>250
Bignoniaceae	<i>Jacaranda decurrens</i> Cham.	Carobinha	L (m)	Astringent [35]	>250
Euphorbiaceae	<i>Alchornea glandulosa</i> Poepp. & Endl. HU7569 ^c	Tamanqueiro, Tapiá, Tanheiro	L (m)	Antidiarrheal, anti-inflammatory, antirheumatic	>250
Fabaceae	<i>Stryphnodendron adstringens</i> (Mart.) Coville DDMS152 ^b	Barbatimão	L (m), S (hs)	Leucorrhoea, bleeding, wound cleaning [36]	>250
Gesneriaceae	<i>Sinningia aggregata</i> (Ker. Gawl.) Wiehler		Tuber (e)		>250
	<i>Sinningia allagophylla</i> (Mart.) Wiehler MBM313530 ^d	Batata-do-campo ou Batata-de-perdiz	Tuber (e)	Antipyretic, diuretic, depurative [37]	>250
	<i>Sinningia canescens</i> (Mart.) Wiehler MBM363740 ^d	Rainha do abismo	Tuber (e)		>250
Malvaceae	<i>Hibiscus sabdariffa</i> L. DDMS4593 ^b	Vinagreira, Azedinha	L(e), C(e)	Antispasmodic, anti-inflammatory, antioxidant, diuretic, mild laxative [38]	>250
Meliaceae	<i>Trichilia silvatica</i> DC. DDMS4662 ^b	Catiguá-branco, Catiguá, Rosa-branca	L(m), S(hs), C(m), OE	Anti-inflammatory [39]	>250
Myrtaceae	<i>Eugenia pyriformis</i> Cambess. UPCB 16741 ^a	Uvaia	L (e)	Astringent, digestive, antitumoral, antimalarial, anti-inflammatory [40]	>250
	<i>Myrcia obtecta</i> (O. Berg) Kiaersk. var. <i>obtectata</i> UPCB50504 ^g	Guamirim branco, Cambuí	L (e)		>250
	<i>Myrcia larutteana</i> Camb. UPCB53303 ^g	Cambuí	L (e)	Antidiarrheal [41]	>250
	<i>Campomanesia adamantium</i> (Cambess.) O.Berg DDMS ^b	Guabiroba-do-campo, Guabiroba-do-cerrado	L(m)	Antidiarrheal and anti-inflammatory [42]	>250
Rubiaceae	<i>Randia hebecarpa</i> Benth.	Limãozinho	L(m)		>250
	<i>Geophila repens</i> (L.) I.M. Johnst.	Cauá-pirí, Cauá-Pixi	L(m)		>250
	<i>Psychotria brachybotrya</i> DC.		L(e)		>250
	<i>Palicourea crocea</i> (Sw.) Roem. & Schult.		L(m)		>250
Sapindaceae	<i>Serjania hebecarpa</i> Benth.		L(m)		>250
	<i>Urvillea ulmaceae</i> Kunth.		L(m)		>250
Tropaeolaceae	<i>Tropaeolum majus</i> L.	Capuchinha	L(e), C(e), R(hs)		>250

^aHerbarium of the Universidade Federal do Paraná – UFPR.

^bHerbarium of the Faculdade de Ciências Biológicas e Ambientais – UFGD/MS.

^cHerbarium of the Departamento de Biologia – UEM/PR.

^dHerbarium of the Museu Botânico Municipal de Curitiba - PR.

L = leaves; R = root (wood + bark); S = stem (wood + bark); C = capitulum; F = fruit. Solvents: h, hexane; hs, 90% hydroethanolic solution; m, methanol; e, ethanol.

Essential oil extraction

Fresh leaves of *A. sylvatica*, *Trichilia sylvatica*, and *S. terebinthifolius* were subjected to steam distillation for 3 h using a Clevenger-type apparatus. The oil was dried by anhydrous sodium sulfate and preserved in a sealed vial at 4°C until analysis.

LC-MS analysis of the methanolic extract of *A. sylvatica*

Studies using liquid chromatography coupled with mass spectrometry (LC-MS) were performed using a quad MS system spectrometer (Bruker, Bremen, Germany). Mass spectrometry was carried out in positive mode, and negative ionization (ESI) was performed using a mass/charge (m/z) ratio range from 60 to 1000. The sample was analyzed on an analytical LC system (Varian) with a ternary solvent fitted with an automatic sample, a diode array detector (PDA), and a mass spectrometer (Bruker). The LC column was a Luna C-18 column (25 cm × 4.6 mm; particle size, 5 μm) (Phenomenex, Torrance, CA, USA) with a small pre-column (2.5 cm × 3 mm) containing the same filling used to protect the analytical column. The flow rate was 1.0 mL/min, and an injected volume of 10 L was used for each analysis. All liquid chromatographic analyses were performed at 22°C. The elution was conducted using a solvent gradient of 0.1% formic acid:acetonitrile (85:15, v/v); the elution required 40 min to reach 30% formic acid and 70% acetonitrile and was then returned to the initial conditions in exactly 5 min.

Anti-*M. tuberculosis* activity

The anti-*M. tuberculosis* activity of the extracts, essential oils, and compounds was determined using the REMA method [46]. *M. tuberculosis* H₃₇Rv ATCC 27294 was grown for 15 days in Middlebrook 7H9 broth (Difco) supplemented with OADC enrichment (BBL/Becton-Dickinson) containing oleic acid, albumin, dextrose, and catalase; 0.5% glycerol as a carbon source; and 0.5% Tween 80 to prevent clumping. Suspensions were prepared, and the turbidity was adjusted to a McFarland no. 1 standard.

Stock solutions of the tested extracts were prepared in DMSO, and dilutions to obtain final concentrations ranging from 0.98 to 250 μg/mL were prepared in Middlebrook 7H9 broth supplemented with oleic acid, albumin, dextrose, and catalase (OADC enrichment, BBL/Becton-Dickinson, Sparks, MD, USA). Isoniazid, rifampicin, streptomycin, and ethambutol were solubilized according to the manufacturers' recommendations (Difco Laboratories, Detroit, MI, USA) and used as positive control drugs.

After further dilutions to reach the final bacterial suspension concentration (5×10^5 UFC/mL), 100 μL of the inoculum was added to each well of a 96-well microtiter plate containing the extracts. The assays were set up in

duplicate. The plates were incubated for 7 days at 37°C, and after this incubation, 30 μL of 0.1 mg/mL resazurin was added. The wells were read for color change and fluorescence in a SPECTRAfluor Plus microfluorimeter (TECAN) (excitation/emission with 530/590 nm filters, respectively) after 24 h. The MIC (minimum inhibitory concentration) was defined as the lowest concentration resulting in a 90% growth inhibition of *M. tuberculosis*. The MIC values of isoniazid (0.06 μg/mL), rifampicin (0.03–0.06 μg/mL), streptomycin (0.25 μg/mL), and ethambutol (2.0–4.00 μg/mL) were determined in a single plate as standards [47].

A sample with an MIC value < 250 μg/mL was defined as active against *M. tuberculosis*, and further analysis was applied [48].

Animals and acute toxicity tests

Adult female Swiss mice (19 to 24 g) from the Federal University of Grande Dourados were maintained at a controlled temperature (23°C) and humidity (50%–60%) with a constant 12 h light–dark cycle and free access to food and water. The experimental procedures were in accordance with the Ethical Principles in Animal Research and approved by the Committee for Ethics in Animal Experimentation at the Federal University of Grande Dourados (Protocol no. 005/2010). The acute toxicity studies were conducted according to OECD (Organization for Economic Cooperation and Development) Guideline 425 [33] and ANVISA (Brazilian Health Surveillance Agency) guidelines.

After 12 h of fasting, the animals were divided into four groups. The treatments were performed by single oral administration as doses of 0, 500, 1000, and 2000 mg/kg of body weight of the EAF. The animals were observed for signs of toxicity over 14 days. Behavioral parameters, mortality, the weight of the animals, and the amount of water and feed were analyzed.

After 14 days of treatment, the animals were weighed and anesthetized (ketamine and xylazine, 25 and 10 mg/kg, respectively). Blood samples were collected with and without anticoagulant (heparin sodium, Cristália). The blood samples were used to determine the hematological parameters (total and differential leukocyte count, hematocrit, hemoglobin, and erythrocyte count), and the serum samples were used for biochemical analysis (aspartate aminotransferase – AST, alanine aminotransferase – ALT, gamma glutamyl transferase – γ-GT, urea, and creatinine) [49]. The biochemical parameters were determined by spectrophotometry using Gold Analisa Diagnóstica Ltda's kits.

Subsequently, the animals were euthanized, and the vital organs (lung, liver and right kidney) were removed and weighed (absolute and relative weight). For the histopathological analysis of these organs, the samples were

fixed in 10% buffered formalin, and the tissues were processed by conventional techniques in 5-mm-thick paraffin slices. Slides were prepared and stained with hematoxylin and eosin for light microscopy examination. The evaluated parameters were reversible (degeneration) and irreversible (necrosis and apoptosis) cell damage, leukocyte infiltration, congestion, blood extravasation, and fibrosis.

The data were evaluated using an analysis of variance with an F-test, with $p < 0.05$ defined as significant.

Results and discussion

Antimycobacterial activity

The species and tested parts of the plants used in the evaluation of anti-mycobacterial activity are shown in Table 1. Of the 28 samples, only the crude extract from *A. sylvatica* (MIC = 184.33 $\mu\text{g/mL}$) exhibited promising activity (Table 1).

Several studies and screens must be performed to develop a new drug for tuberculosis; therefore, many drug discovery studies ultimately fail. A study in Mozambique screened 75 extracts of medicinal plants used for the local treatment of symptoms related to tuberculosis and identified eight extracts with moderate to significant activity against *M. tuberculosis* H37Rv. Of these extracts, six showed MICs that were higher than those observed for *A. sylvatica* and the *A. sylvatica* EAF. One extract exhibited an MIC of 62 $\mu\text{g/mL}$, and another exhibited an MIC of 15 $\mu\text{g/mL}$ [16]. Another study evaluated the anti-mycobacterial activity of the crude extract of *Byrsocnina crassa* (leaves and bark) and obtained an MIC value of 62.5 $\mu\text{g/mL}$ for the chloroform extract of the leaves. The chloroform extract of the bark presented an MIC of 312.25 $\mu\text{g/mL}$ [50].

The fractionation of the extract by partitioning in different solvents provided the chloroform (CF), ethyl acetate (EAF), and hydromethanol (HMF) fractions, which were subsequently evaluated for their anti-mycobacterial activity. An evaluation of the MIC of these fractions (Table 2) revealed the potent activity of the EAF fraction, with an MIC value of 115.2 $\mu\text{g/mL}$. The result of CIM of standard drugs, used as a control to the antimycobacterial activity tests are in agreement with the expected [47].

Brazilian flora is rich in plants of the family Annonaceae, which comprises approximately 120 genera and 2000–2200 species. This family is important as a source of various edible fruits and seeds that can be used for the production of edible oils. The major components identified in members of the Annonaceae are typically acetogenins [51–53].

Annona sylvatica A.St.-Hill (formerly known as *Rollinia sylvatica* St.-Hil. Mart) is a native Brazilian plant found in Minas Gerais and São Paulo to Rio Grande do Sul. The leaves of *A. sylvatica* have been used mainly as an antipyretic in folk medicine. There are no reports in the literature

Table 2 MIC^a of *A. sylvatica* fractions and isolated compounds against *M. tuberculosis* using the REMA assay

Fraction	MIC ($\mu\text{g/mL}$)	MIC (μM)
CF	> 250	-
EAF	115.2	-
HMF	> 250	-
Luteolin (1)	236.8	827.28
Quercetin (2)	> 250	-
Almunequin (4)	209.9	328.48
Isoniazid	0,05	
Rifampin	0,1	Rifampin
Streptomycin	0,28	Streptomycin
Ethambutol	1,88	Ethambutol

^aValues are means of duplicate sample.

on the antimicrobial activity of this species, but studies have reported that the essential oil obtained from the leaves has anti-inflammatory activity and anticancer properties [54]. A chemical study reported the isolation of sylvatin from *Rollinia sylvatica* [55]. Preliminary LC-MS studies have shown that the major metabolites in the leaves of *A. sylvatica* are flavonoids and acetogenins (Figure 1).

The results of the present study indicate that the effects of the methanolic extract of *A. sylvatica* and ethyl acetate fraction may be associated with other components of the extract (which were not evaluated) or that there might be a synergism between the active isolated compounds.

Annonaceae acetogenins are secondary metabolites derived from polyketides and are structurally characterized by a long-chain terminal α , β -unsaturated methyl γ -lactone. This hydrocarbon chain generally contains one, two, or rarely three tetrahydrofuran (THF) rings. Acetogenins belong to two different classes: bis-tetrahydrofuran non-adjacent almunequin and dihydroalmunequin 2.5 and 2, and β -hydroxy-methyl- γ -lactone and laherrandurin otivarin. The acetogenins identified in the extract of *A. sylvatica* have been reported in other *Annona*, including *A. atemoya* and *A. cherimola* [45,56–58].

In this context, the present study revealed the potential anti-*M. tuberculosis* activity of the methanolic extract of *A. sylvatica*, which is still poorly characterized in phytochemical and pharmacological terms. To characterize the possible compounds responsible for this activity, we investigated the individual compounds in the methanolic extract of *A. sylvatica*; our chromatogram of the lyophilized extract (Figure 1) showed characteristic distributions of the flavonoids luteolin (m/z 286) (1) and quercetin (m/z 302) (2) and the acetogenins laherrandurin (m/z 624) (3), almunequin (m/z 638) (4), otivarin (m/z 640) (5), and 2,5 dihydroalmunequin (m/z 640) (6) (Figure 1). This is the

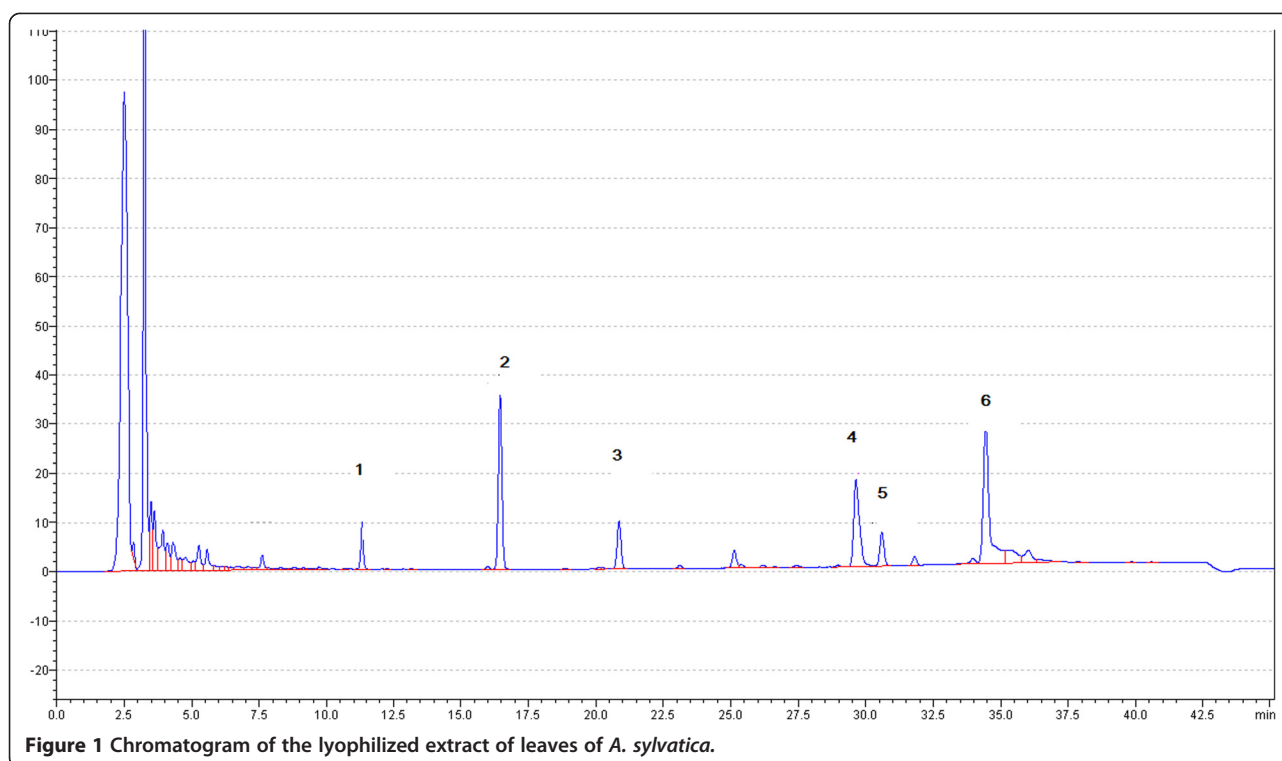


Figure 1 Chromatogram of the lyophilized extract of leaves of *A. sylvatica*.

first report of the chemical characterization of compounds from *A. sylvatica* leaves.

The isolated compounds evaluated for anti-mycobacterial activity are shown in Table 2. In the present study, we examined the effects of two flavonoids: luteolin and quercetin. Among the isolated compounds, luteolin and almunequin showed anti-*M. tuberculosis* effects, with MIC values of 236.8 $\mu\text{g/mL}$ (827.28 μM) and 209.9 $\mu\text{g/mL}$ (328.48 μM), respectively. Our data indicate that quercetin, unlike luteolin and almunequin, failed to exhibit anti-mycobacterial activity at low concentrations.

Luteolin isolated from the flowers of *Chromolaena odorata* showed weak activity (699.3 μM MIC) against *M. tuberculosis* [28]. However, luteolin isolated from *Ficus chlamydocarpa* showed stronger activity against *M. tuberculosis* and *M. smegmatis* (78.12 $\mu\text{g/mL}$ MIC) [29]. Nevertheless, the luteolin isolated from the whole plant of *Gentianopsis paludosa* was inactive against these microorganisms [30]. Having established the inhibitory effects of luteolin on *M. tuberculosis*, we investigated whether this agent exhibits a structure-activity relationship in terms of its biological function. The isolated flavonoids belong to the flavone (luteolin) and flavon-3-ol (quercetin) classes. The structures of quercetin and luteolin share double bonds between C2 and C3 in ring C, the 3', 4' -diOH ring A groups, and the 7, 8 -diOH ring A groups. However, ring C in these compounds shows considerable variation, as it is a 3-OH group in quercetin. This variation shows that catechol groups could not

confer appreciable activity when they were found on both ring A and ring B. From a structural point of view, this finding suggests that the 3-OH in quercetin results in an inactivation of the structure, which might be critical for *M. tuberculosis* survival. The observed results for quercetin are consistent with those observed for quercetin isolated from *Helichrysum melanacme* against *M. tuberculosis* [31]. Based on our data and those of others [31], we suggest that the absence of hydroxylation in the C3 in structure of the luteolin is required for anti-mycobacterial activity. These results may provide a basis for the further design of new anti-mycobacterial drugs.

The compound almunequin was very difficult to isolate. Almunequin is a C37 annonaceous acetogenin with a bis-tetrahydrofuranic structure containing hydroxyl groups and α , β -unsaturated γ -lactone methyl group. The structure-activity relationship for almunequin can be attributed the α , β -unsaturated lactone present at the long-chain terminal. The α , β -unsaturated lactones are a class of synthetic and naturally occurring compounds that exhibit a large spectrum of important pharmacological properties [34-38,59].

Acute toxicity

The EAF fraction of *A. sylvatica* produced significant weight gain in treated animals (Table 3). During treatment, no clinical signs of toxicity were observed, and no death was recorded. There were also no changes in food or water intake. The oral administration of this fraction

Table 3 Body weight and relative weights of organs of animals exposed to EAF fraction

Parameters	Control	500 mg kg ⁻¹	1000 mg kg ⁻¹	2000 mg kg ⁻¹	p*
Corporeal weight	21.09 ± 1.31	23.24 ± 1.71	22.24 ± 0.64	23.08 ± 0.74	0.0205
Liver	6.31 ± 0.45	5.98 ± 0.32	5.96 ± 0.70	5.89 ± 0.55	0.5294
Lungs	0.64 ± 0.06	0.56 ± 0.03	0.67 ± 0.15	0.68 ± 0.07	0.1458
Heart	0.47 ± 0.06	0.42 ± 0.02	0.43 ± 0.03	0.48 ± 0.03	0.0666
Right kidney	0.53 ± 0.05	0.58 ± 0.02	0.57 ± 0.05	0.57 ± 0.02	0.1773
Left kidney	0.56 ± 0.03	0.56 ± 0.02	0.59 ± 0.04	0.54 ± 0.08	0.7158
Spleen	0.53 ± 0.19	0.43 ± 0.02	0.48 ± 0.03	0.46 ± 0.04	0.5074

Relative weight (%) of the liver, lung, heart, right kidney, left kidney and spleen of female Swiss mice treated with 500, 1000 and 2000 mg kg⁻¹ of the EAF fraction of *A. sylvatica*. Data are expressed as the mean ± standard deviation SISVAR 5.3 [25]. (n=6) is the number of animals in each group. p*=5%.

generally did not produce toxic effects on the behavior of adult female Swiss mice. Apart from the weight increase, no visible clinical signs of toxicity were observed.

There was no evidence for differences in physiological or behavioral responses between the control group and any of the treated groups at any time. There were also no differences in the consumption of food and water.

The hematologic parameters of the treated groups did not differ from those of the control group. A biochemical evaluation confirmed these results; there were no significant differences in the AST, ALT, or γ GT results between the control group and treated animals. These enzymes are liver function markers, and changes in these parameters may result from reversible or irreversible hepatocellular

membrane damage. Changes in these markers are often associated with necrosis, cholestasis, hypoxia, hypoperfusion, inflammation, infectious agents and toxins, or excess lipid or glycogen deposition in hepatocytes [39]. The integrity of liver function was assessed by histopathological analysis of the liver, and we found no damage associated with hepatotoxicity. The effects of the acute administration of the EAF fraction of *A. sylvatica* on hematological and biochemical parameters are presented in Table 4.

The EAF fraction of *A. sylvatica* had no acute toxicity, as evidenced by the absence of relevant clinical signs in the toxicological screening and the absence of death throughout the observation period. Hippocratic screening

Table 4 Biochemical and hematological parameters of Swiss mice exposed to the EAF fraction of *A. sylvatica* in the acute toxicity study

Parameters	Control	500 mg kg ⁻¹	1000 mg kg ⁻¹	2000 mg kg ⁻¹	p*
Creatinine (mg/dL)	0.29 ± 0.03	0.29 ± 0.07	0.28 ± 0.06	0.28 ± 0.05	0.8100
Urea (mg/dL)	43.66 ± 4.27	44.33 ± 4.41	45 ± 5.03	42.5 ± 4.23	0.6391
AST (U/L)	76 ± 4.45	78 ± 5.91	77 ± 4.94	79 ± 4.99	0.9015
ALT (U/L)	52.5 ± 4.27	48.5 ± 4.37	50 ± 4.27	53 ± 4.75	0.1990
γ GT (U/L)	11 ± 1.41	11.5 ± 1.37	11 ± 1.26	12 ± 12.6	0.5218
RBC (x 10 ⁶ /mm ³)	7.06 ± 0.12	7.11 ± 0.11	7.1 ± 0.10	7.15 ± 0.08	0.6161
HT (%)	45.33 ± 3.66	44.68 ± 3.55	44.5 ± 2.81	45.16 ± 3.9	0.9721
WBC (%)	8.16 ± 0.75	8.33 ± 1.03	8 ± 0.63	8.33 ± 0.81	0.4138
PLT (x 10 ³ / μ L)	916 ± 10.78	928 ± 9.77	928.66 ± 27	925.16 ± 13	0.5353
LYNF (%)	77 ± 1.63	71 ± 1.36	77.83 ± 0.89	79 ± 2.06	0.4913
NEUT (%)	19.16 ± 1.02	20 ± 1.69	19 ± 0.13	17 ± 1.14	0.5783

Hematological and biochemical parameters of female Swiss mice treated acutely orally with vehicle (control) or the EAF fraction of *A. sylvatica* at doses of 500 mg kg⁻¹ 1000 mg kg⁻¹ and 2000 mg kg⁻¹. Values represent the mean ± SD. (n=6) is the number of animals in each group. p*=5%.

AST = Aspartate aminotransferase.

ALT = Alanine aminotransferase.

γ GT = Gamma glutamyl transferase.

RBC = Red Blood Cell.

HT = Hematocrite.

WBC = White Blood Cell.

PLT = Platelets.

LYNF = Lymphocytes.

NEUT = Neutrophils.

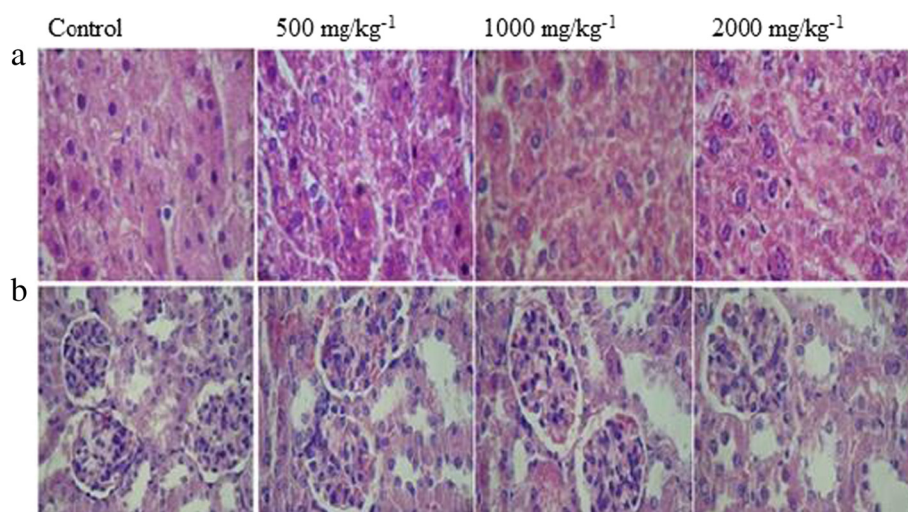


Figure 2 Histological analysis of acute toxicity at doses of 500, 1000 and 2000 mg/kg⁻¹ of EAF fraction (hematoxylin – eosin staining, 100X magnification). **a)** Longitudinal section of liver; **b)** longitudinal section of kidney.

such as this is often used for the preliminary screening of plants for toxicological and pharmacological activity. The EAF fraction also did not have any influence on the consciousness of the animals during the observed period. No effects on the motor coordination or reflexes of the treated animals were observed. At doses of 500, 1000, and 2000 mg/kg, the EAF fraction produced no dose-dependent changes in histopathology between the control group and the treated animals (Figure 2). Therefore, EAF has low toxicity at high doses in the short term. Additional studies are required to determine the safety of this fraction over a prolonged period.

The acute administration of the EAF produced no toxic effects in adult female Swiss mice. No visible clinical signs of toxicity, such as irritability, twisting, righting reflex, tremors, convulsions, breathing, weight loss, or death, were observed. In the present study, we did not observe an increase in the accumulation of urea or creatinine. These results were also confirmed by histopathological analysis of the kidneys, which indicates that the acute oral administration of *A. sylvatica* does not induce nephrotoxicity.

Ethics statement

These field studies did not involve endangered or protected species and no specific permits were required for the described studies. The studies performed with species of Annonaceae, Bignoniaceae, Meliaceae, Fabaceae and Myrcia species were collected in particular area, with access permitted the researchers to collect botanical material. The species of Asteraceae, Anacardiaceae, Tropaeolaceae and Malvaceae were collected in the Medicinal Plants Garden of the Federal University of

Grande Dourados, and Gesneriaceae in the Municipal Botanical Museum of Curitiba. The Rubiaceae were collected in a Brazilian stretch of the Upper Paraná River, Porto Rico, park ecosystem components collection for scientific purposes. The work with *Sinningia* species had an access authorization to genetic patrimony given by National Research Council (CNPq, 010087/2012-5). Professor Armando C. Cervi (Federal University of Paraná) collected *S. aggregata* and *S. canescens*, and Clarice Bolfe Poliquesi (Municipal Botanical Museum of Curitiba) collected *Sinningia allagophylla*.

Conclusion

To the best of our knowledge, this is the first chemical characterization, evaluation of antitubercular activity, and analysis of the *in vivo* acute toxicity of the *A. sylvatica* methanolic extract. Our study demonstrates the potential anti-mycobacterial activity and the lack of *in vivo* acute toxicity of its isolated compounds.

Competing interests

The authors declare that they have no competing interests.

Authors' contribution

RCP and VVS performed the experimental work and data analyses of the antimycobacterial activity tests and the *in vivo* acute toxicity tests, respectively, and wrote the manuscript. JC designed the study and FRP supervised experimental work. CALK and ASNF performed the plant extractions and LC-MS and NMR experimental work. JC, FRP, FARN e MEAS have reviewed the manuscript. All authors read and approved the final manuscript.

Acknowledgements

We are grateful to CNPq for providing financial support (564506/2010-9). In addition, we are grateful to Dr. Maria Conceição de Souza, Dr. Zefa Valdevina Pereira, and Dr. Armando Carlos Cervi for the botanical identification of plant material.

Author details

¹Faculty of Health Sciences, Federal University of Grande Dourados, Rodovia Dourados – Itaipu. Km 12, Dourados, Mato Grosso do Sul 79804-970, Brazil.

²Faculty of Health Sciences, University of Brasília (UNB), Brasília, Brazil.

³Faculty of Agrarian Sciences, Federal University of Grande Dourados, Dourados, Brazil. ⁴Department of Chemistry, Federal University of Paraná, Curitiba, Paraná, Brazil. ⁵Biological Science Department – College of Pharmaceutical Sciences, Estadual University of São Paulo, Araraquara, Brazil.

Received: 18 March 2014 Accepted: 17 June 2014

Published: 28 June 2014

References

- Organization WH: *Health Systems Profile*. Somalia. Geneva: WHO; 2006.
- Plague of poverty? The World Health Organization, Tuberculosis and International Development. 1945–1980.
- Tripathi RP, Tewari N, Dwivedi N, Tiwari VK: **Fighting tuberculosis: an old disease with new challenges**. *Med Res Rev* 2005, **25**:93–131.
- Espinal MA: **The global situation of MDR-TB**. *Tuberculosis (Edinb)* 2003, **83**:44–51.
- Copp BR, Pearce AN: **Natural product growth inhibitors of Mycobacterium tuberculosis**. *Nat Prod Rep* 2007, **24**:278–297.
- Zar HJ, Udawadia ZF: **Advances in tuberculosis 2011–2012**. *Thorax* 2013, **68**:283–287.
- Chen JJ, Yang CS, Peng CF, Chen IS, Miaw CL: **Dihydroagarofuranoid sesquiterpenes, a lignan derivative, a benzenoid, and antitubercular constituents from the stem of Microtropis japonica**. *J Nat Prod* 2008, **71**:1016–1021.
- Cooper EL: **Drug Discovery, CAM and Natural Products**. *Evid Based Complement Alternat Med* 2004, **1**:215–217.
- Yang PS, Cheng MJ, Peng CF, Chen JJ, Chen IS: **Endiandric Acid Analogues from the Roots of Beilschmiedia erythrophloia**. *J Nat Prod* 2009, **72**:53–58.
- Molina-Salinas GM, Borquez J, Ardiles A, Said-Fernandez S, Loyola LA, San-Martin A, Gonzalez-Collado I, Pena-Rodriguez LM: **Antituberculosis activity of natural and semisynthetic azorellane and mulinane diterpenoids**. *Fitoterapia* 2010, **81**:50–54.
- Molina-Salinas GM, Borquez J, Said-Fernandez S, Loyola LA, Yam-Puc A, Becerril-Montes P, Escalante-Erosa F, Pena-Rodriguez LM: **Antituberculosis activity of alkylated mulinane diterpenoids**. *Fitoterapia* 2010, **81**:219–222.
- Lekphrom R, Kanokmedhakul S, Kanokmedhakul K: **Bioactive diterpenes from the aerial parts of Anisochilus harmandii**. *Planta Med* 2010, **76**:726–728.
- Rajabi L, Courreges C, Montoya J, Aguilera RJ, Primm TP: **Acetophenones with selective antimycobacterial activity**. *Lett Appl Microbiol* 2005, **40**:212–217.
- Rojas R, Caviedes L, Aponte JC, Vaisberg AJ, Lewis WH, Lamas G, Sarasara C, Gilman RH, Hammond GB: **Aegicerin, the first oleanane triterpene with wide-ranging antimycobacterial activity, isolated from Clavija procera**. *J Nat Prod* 2006, **69**:845–846.
- Chimponda T, Mukanganyama S: **Antimycobacterial activities of selected medicinal plants from Zimbabwe against Mycobacterium aurum and Corynebacterium glutamicum**. *Trop Biomed* 2010, **27**:595–610.
- Luo X, Pires D, Ainsa JA, Gracia B, Mulhovo S, Duarte A, Anes E, Ferreira MJ: **Antimycobacterial evaluation and preliminary phytochemical investigation of selected medicinal plants traditionally used in Mozambique**. *J Ethnopharmacol* 2011, **137**:114–120.
- Leon-Diaz R, Meckes M, Said-Fernandez S, Molina-Salinas GM, Vargas-Villarreal J, Torres J, Luna-Herrera J, Jimenez-Arellanes A: **Antimycobacterial neolignans isolated from Aristolochia taliscana**. *Mem Inst Oswaldo Cruz* 2010, **105**:45–51.
- Webster D, Lee TD, Moore J, Manning T, Kunimoto D, LeBlanc D, Johnson JA, Gray CA: **Antimycobacterial screening of traditional medicinal plants using the microplate resazurin assay**. *Can J Microbiol* 2010, **56**:487–494.
- Jimenez-Arellanes A, Leon-Diaz R, Meckes M, Tapia A, Molina-Salinas GM, Luna-Herrera J, Yeppez-Mulia L: **Antiprotozoal and Antimycobacterial Activities of Pure Compounds from Aristolochia elegans Rhizomes**. *Evid Based Complement Alternat Med* 2012, **2012**:593403.
- Leon-Diaz R, Meckes-Fischer M, Valdivinos-Martinez L, Campos MG, Hernandez-Pando R, Jimenez-Arellanes MA: **Antitubercular activity and the subacute toxicity of (–)-Licarin A in BALB/c mice: a neolignan isolated from Aristolochia taliscana**. *Arch Med Res* 2013, **44**:99–104.
- Rojas R, Bustamante B, Ventosilla P, Fernandez I, Caviedes L, Gilman RH, Lock O, Hammond GB: **Larvicidal, antimycobacterial and antifungal compounds from the bark of the Peruvian plant Swartzia polyphylla DC**. *Chem Pharm Bull (Tokyo)* 2006, **54**:278–279.
- Tran T, Saheba E, Arcerio AV, Chavez V, Li QY, Martinez LE, Primm TP: **Quinones as antimycobacterial agents**. *Bioorg Med Chem* 2004, **12**:4809–4813.
- Rijo P, Simoes MF, Francisco AP, Rojas R, Gilman RH, Vaisberg AJ, Rodriguez B, Moiteiro C: **Antimycobacterial metabolites from Plectranthus: royleanone derivatives against Mycobacterium tuberculosis strains**. *Chem Biodivers* 2010, **7**:922–932.
- Chen JJ, Wu HM, Peng CF, Chen IS: **Chu SD: seco-Abietane diterpenoids, a phenylethanoid derivative, and antitubercular constituents from Callicarpa pilosissima**. *J Nat Prod* 2009, **72**:223–228.
- Scher JM, Schinkovitz A, Zapp J, Wang Y, Franzblau SG, Becker H, Lankin DC, Pauli GF: **Structure and anti-TB activity of trachylobanes from the liverwort Jungermannia exsertifolia ssp. cordifolia**. *J Nat Prod* 2010, **73**:656–663.
- Truong NB, Pham CV, Doan HT, Nguyen HV, Nguyen CM, Nguyen HT, Zhang HJ, Fong HH, Franzblau SG, Soejarto DD, Chau MV: **Antituberculosis cycloartane triterpenoids from Radermachera boniana**. *J Nat Prod* 2011, **74**:1318–1322.
- Orme I: **Search for new drugs for treatment of tuberculosis**. *Antimicrob Agents Chemother* 2001, **45**:1943–1946.
- Suksamrarn A, Chotipong A, Suavansri T, Boongird S, Timsuksai P, Vimuttipong S, Chuaynugul A: **Antimycobacterial activity and cytotoxicity of flavonoids from the flowers of Chromolaena odorata**. *Arch Pharm Res* 2004, **27**:507–511.
- Kuete V, Ngameni B, Simo CC, Tankeu RK, Ngadjui BT, Meyer JJ, Lall N, Kuiate JR: **Antimicrobial activity of the crude extracts and compounds from Ficus chlamydocarpa and Ficus cordata (Moraceae)**. *J Ethnopharmacol* 2008, **120**:17–24.
- Yeung MF, Lau CB, Chan RC, Zong Y, Che CT: **Search for antimycobacterial constituents from a Tibetan medicinal plant, Gentianopsis paludosa**. *Phytother Res* 2009, **23**:123–125.
- Lall N, Hussein AA, Meyer JJ: **Antiviral and antituberculous activity of Helichrysum melanacme constituents**. *Fitoterapia* 2006, **77**:230–232.
- Fujimoto Y, Murasaki C, Shimada H, Nishioka S, Kakinuma K, Singh S, Singh M, Gupta YK: **NMR data of Almunequin**. *Chem Pharm Bull* 1994, **36**:4802.
- OECD OFEC-oad: **OECD Guideline 425: Acute Oral Toxicity: Up-and-Down Procedure**. In *Book OECD Guideline 425: Acute Oral Toxicity: Up-and-Down Procedure (Editor ed. ^eds.)*. City; 2008.
- Fatima A, Kohn LK, Carvalho JE, Pilli RA: **Cytotoxic activity of (S)-goniothalamin and analogues against human cancer cells**. *Bioorg Med Chem* 2006, **14**:622–631.
- Albrecht A, Morana F, Fraile A, Jorgensen KA: **Organophosphorus reagents in organocatalysis: synthesis of optically active alpha-methylene-delta-lactones and delta-lactams**. *Chemistry* 2012, **18**:10348–10354.
- Lapalikar GV, Taylor MC, Warden AC, Scott C, Russell RJ, Oakeshott JG: **F420H2-dependent degradation of aflatoxin and other furanocoumarins is widespread throughout the actinomycetales**. *PLoS One* 2012, **7**:e30114.
- Tormo JR, Estornell E, Gallardo T, Gonzalez MC, Cave A, Granell S, Cortes D, Zafra-Polo MC: **Gamma-lactone-Functionalized antitumoral acetogenins are the most potent inhibitors of mitochondrial complex I**. *Bioorg Med Chem Lett* 2001, **11**:681–684.
- Gallardo T, Zafra-Polo MC, Tormo JR, Gonzalez MC, Franck X, Estornell E, Cortes D: **Semisynthesis of antitumoral acetogenins: SAR of functionalized alkyl-chain bis-tetrahydrofuranic acetogenins, specific inhibitors of mitochondrial complex I**. *J Med Chem* 2000, **43**:4793–4800.
- Ezeja MI, Anaga AO, Asuzu IU: **Acute and sub-chronic toxicity profile of methanol leaf extract of Gouania longipetala in rats**. *J Ethnopharmacol* 2014, **151**:1155–1164.
- Chavasco JM, Prado EFBH, Cerdeira CD, Leandro FD, Coelho LF, Silva JJ, Chavasco JK, Dias AL: **Evaluation of antimicrobial and cytotoxic activities of plant extracts from southern Minas Gerais cerrado**. *Rev Inst Med Trop Sao Paulo* 2014, **56**:13–20.
- Salvador MJ, de Lourenco CC, Andreatza NL, Pascoal AC, Stefanello ME: **Antioxidant capacity and phenolic content of four Myrtaceae plants of the south of Brazil**. *Nat Prod Commun* 2011, **6**:977–982.
- Pascoal AC, Ehrenfried CA, Lopez BG, de Araujo TM, Pascoal VD, Gilioli R, Anhe GF, Ruiz AL, Carvalho JE, Stefanello ME, Salvador MJ: **Antiproliferative**

- activity and induction of apoptosis in PC-3 cells by the chalcone cardamonin from *Campomanesia adamantium* (Myrtaceae) in a bioactivity-guided study. *Molecules* 2014, **19**:1843–1855.
43. Ross SA, ElSohly MA, Sultana GN, Mehmedic Z, Hossain CF, Chandra S: Flavonoid glycosides and cannabinoids from the pollen of *Cannabis sativa* L. *Phytochem Anal* 2005, **16**:45–48.
 44. Silva DA, Silva TMS, Lins ACS, Costa DA, Cavalcante JMS, Matias WN, Souza MFV, Braz Filho R: Constituintes químicos e atividade antioxidante de *Sida galheirensis* Ulbr. (Malvaceae). *Quím Nova* 2006, **29**:1250–1254.
 45. Cortes DMS, Dupont B, Davoust D: Bioactive acetogenins from seeds of *Annona cherimolia*. *Phytochemistry* 1993, **32**:1475–1482.
 46. Palomino JC, Martin A, Camacho M, Guerra H, Swings J, Portaels F: Resazurin microtiter assay plate: simple and inexpensive method for detection of drug resistance in *Mycobacterium tuberculosis*. *Antimicrob Agents Chemother* 2002, **46**:2720–2722.
 47. Collins L, Franzblau SG: Microplate alamar blue assay versus BACTEC 460 system for high-throughput screening of compounds against *Mycobacterium tuberculosis* and *Mycobacterium avium*. *Antimicrob Agents Chemother* 1997, **41**:1004–1009.
 48. Gu JQ, Wang Y, Franzblau SG, Montenegro G, Yang D, Timmermann BN: Antitubercular Constituents of *Valeriana laxiflora*. *Planta Med* 2004, **70**:509–514.
 49. Balani T, Agrawal S, Thaker AM: Hematological and biochemical changes due to short-term oral administration of imidacloprid. *Toxicol Int* 2011, **18**:2–4.
 50. Higuchi CT, Pavan FR, Leite CQF: Triterpenes and antitubercular activity of *Byrsonima crassa*. *Quím Nova* 2008, **31**:1719–1721.
 51. Zeng L, Wu FE, Oberlies NH, McLaughlin JL, Sastrodihadjo S: Five new monotetrahydrofuran ring acetogenins from the leaves of *Annona muricata*. *J Nat Prod* 1996, **59**:1035–1042.
 52. Fatope MO, Audu OT, Takeda Y, Zeng L, Shi G, Shimada H, McLaughlin JL: Bioactive ent-kaurene diterpenoids from *Annona senegalensis*. *J Nat Prod* 1996, **59**:301–303.
 53. Liu XX, Pilarinou E, McLaughlin JL: Two novel acetogenins, annoglaxin and 27-hydroxybullatacin, from *Annona glabra*. *J Nat Prod* 1999, **62**:848–852.
 54. Formagio AS, Vieira Mdo C, Dos Santos LA, Cardoso CA, Foglio MA, de Carvalho JE, Andrade-Silva M, Kassuya CA: Composition and evaluation of the anti-inflammatory and anticancer activities of the essential oil from *Annona sylvatica* A. St-Hil. *J Med Food* 2013, **16**:20–25.
 55. Mikolajczak KJ, Madrigal RV, Rupprecht JK, Hui YH, Liu YM, Smith DL, McLaughlin JL: Sylvaticin: a new cytotoxic and insecticidal acetogenin from *Rollinia sylvatica* (Annonaceae). *Experientia* 1990, **46**.
 56. Wu P, Chen WS, Hu TS, Yao ZJ, Wu YL: Atemoyacin E, a bis-tetrahydrofuran annonaceous acetogenin from *Annona atemoya* seeds. *J Asian Nat Prod Res* 2001, **3**:177–182.
 57. Duret PHR, Cavé A: Annonisin, a bis-tetrahydrofuran acetogenin from *Annona atemoya* seeds. *Phytochemistry* 1997, **45**:1423–1426.
 58. Formagio AS, Kassuya CA, Neto FF, Volobuff CR, Iriguchi EK, Vieira Mdo C, Foglio MA: The flavonoid content and antiproliferative, hypoglycaemic, anti-inflammatory and free radical scavenging activities of *Annona dioica* St. Hill. *BMC Complement Altern Med* 2013, **13**:14.
 59. Le Goff G, Martin MT, Servy C, Cortial S, Lopes P, Bialecki A, Smadja J, Ouazzani J: Isolation and characterization of alpha, beta-unsaturated gamma-lactono-hydrazides from *Streptomyces* sp. *J Nat Prod* 2012, **75**:915–919.

doi:10.1186/1472-6882-14-209

Cite this article as: Araujo et al.: Evaluation of the anti-*mycobacterium tuberculosis* activity and *in vivo* acute toxicity of *Annona sylvatica*. *BMC Complementary and Alternative Medicine* 2014 **14**:209.

Submit your next manuscript to BioMed Central and take full advantage of:

- Convenient online submission
- Thorough peer review
- No space constraints or color figure charges
- Immediate publication on acceptance
- Inclusion in PubMed, CAS, Scopus and Google Scholar
- Research which is freely available for redistribution

Submit your manuscript at
www.biomedcentral.com/submit

