

Research Article

A Comparative Analysis of the Endocannabinoid System in the Retina of Mice, Tree Shrews, and Monkeys

Joseph Bouskila,^{1,2} Pasha Javadi,¹ Laurent Elkrief,^{1,3} Christian Casanova,¹
Jean-François Bouchard,¹ and Maurice Ptito^{1,4}

¹School of Optometry, University of Montreal, Montreal, QC, Canada H3T 1P1

²Biomedical Sciences, Faculty of Medicine, University of Montreal, Montreal, QC, Canada H3T 1J4

³Faculty of Medicine, University of Montreal, Montreal, QC, Canada H3T 1J4

⁴BRAINlab and Neuropsychiatry Laboratory, Department of Neuroscience and Pharmacology, University of Copenhagen, 2200 Copenhagen, Denmark

Correspondence should be addressed to Maurice Ptito; maurice.ptito@umontreal.ca

Received 17 September 2015; Accepted 6 January 2016

Academic Editor: Zygmunt Galdzicki

Copyright © 2016 Joseph Bouskila et al. This is an open access article distributed under the Creative Commons Attribution License, which permits unrestricted use, distribution, and reproduction in any medium, provided the original work is properly cited.

The endocannabinoid (eCB) system is widely expressed in various parts of the central nervous system, including the retina. The localization of the key eCB receptors, particularly CB1R and CB2R, has been recently reported in rodent and primate retinas with striking interspecies differences. Little is known about the distribution of the enzymes involved in the synthesis and degradation of these eCBs. We therefore examined the expression and localization of the main components of the eCB system in the retina of mice, tree shrews, and monkeys. We found that CB1R and FAAH distributions are well-preserved among these species. However, expression of NAPE-PLD is circumscribed to the photoreceptor layer only in monkeys. In contrast, CB2R expression is variable across these species; in mice, CB2R is found in retinal neurons but not in glial cells; in tree shrews, CB2R is expressed in Müller cell processes of the outer retina and in retinal neurons of the inner retina; in monkeys, CB2R is restricted to Müller cells. Finally, the expression patterns of MAGL and DAGL α are differently expressed across species. Overall, these results provide evidence that the eCB system is differently expressed in the retina of these mammals and suggest a distinctive role of eCBs in visual processing.

1. Introduction

Marijuana contains over 70 cannabinoids that mimic the endogenous ligands called endocannabinoids (eCBs) that cause global psychoactive and physiological effects. The eCB system is mainly composed of the specific G-protein-coupled receptors CB1R and CB2R, the eCBs (anandamide and 2-arachidonoylglycerol), the synthesising enzymes NAPE-PLD (*N*-acyl phosphatidylethanolamine-specific phospholipase D) and DAGL α (diacylglycerol lipase alpha), and the degradation enzymes FAAH (fatty acid amide hydrolase) and MAGL (monoacylglycerol lipase). The cannabinoid receptors are found in many mammals and in various classes of vertebrates and invertebrates and in all major subdivisions of bilaterians, urochordates, and cephalochordates but not in the nonchordate invertebrate phyla like insects [1–3]. The

cannabinoid receptors may have evolved in the last common ancestor of the bilaterians with a secondary loss in the insects and other clades [1]. The enzymes responsible for the biosynthesis and the degradation of eCBs are present throughout the animal kingdom [4, 5]. For example, in the rat hippocampus, cerebellum, and amygdala, the distribution of the cytosolic enzyme MAGL is complementary to FAAH (presynaptic versus postsynaptic) suggesting different roles for these two eCBs in the central nervous system (CNS) [6]. The eCB system appears widely distributed in the CNS and points to a fundamental modulatory role of eCBs in the control of many central and peripheral biological functions [7]. A number of specific roles have been ascribed to the eCB system in biological functions, such as neuroprotection, neurogenesis, axon guidance, synaptic plasticity, nociception, motor activity, and memory [8–12]. Disturbances of normal

eCB activity may therefore be associated with various brain disorders [13–16].

The eCB system is also found in the retina of various species [17] albeit noticeable differences in its anatomical organization. Compared to rodents, the retina of tree shrews is more similar to primates [18]. Mice have a rod-dominated retina that is specialized for scotopic conditions [19] with a low visual resolution [20]. Mouse and tree shrew retinas have no fovea compared to primates. However, tree shrews have a well-developed binocular visual system, with a cone-dominated retina [21].

In the retina, the expression of CB1R is well-preserved in many species including mice, rats, chicks, larval tiger salamanders, goldfish, and rhesus monkeys [22]. CB1R and CB2R are also present in various retinal cell types (cones, bipolar, ganglion, horizontal, and amacrine cells) with however some differences [17, 23–27]. For example, CB2R is expressed throughout the mouse retina [25] but it is present exclusively in the Müller cells of the vervet monkey [24]. In the mouse retina, DAGL α and MAGL are widely distributed throughout the IPL, whereas MAGL is present in rod spherules and cone pedicles of the OPL [28]. Both MAGL and DAGL α have been found in an overlapping pattern with CB1R and CB2R in the rat retina. In rats, DAGL α is expressed from the early stages of development in photoreceptors, horizontal, amacrine, and ganglion cells and MAGL later during development mainly in amacrine and Müller cells [29]. The expression and distribution of the major components of the eCB system, notably the metabolizing enzymes (NAPE-PLD, DAGL α , FAAH, and MAGL), in the retina of different mammals have not been studied in depth. It is therefore our aim to analyze the expression of several components of the eCB system and to characterize their distribution pattern in the distinct retinal layers and cell types of three different mammalian species: mice, tree shrews, and monkeys (vervets and macaques).

2. Materials and Methods

2.1. Biological Material. Eyes from 3 adult mice (C57BL/6; 3–4 months old), 2 adult tree shrews (*Tupaia belangeri*; 3–4 months old), 3 vervet monkeys (*Chlorocebus sabaeus*; 3–4 years of age), and 2 rhesus monkeys (*Macaca mulatta*; 3–4 years of age) were used in this study. The animals were part of ongoing research projects that were approved by the University of Montreal and McGill University Animal Care and Use Committees. For all species, anterior segment of the eye and vitreous were cut away. The eyecups were bathed in 4% paraformaldehyde made in 0.1 M sodium phosphate buffer at pH 7.4 and left overnight in the solution. The retina was dissected free from the eyecup in a phosphate-buffered saline (PBS) medium. It was laid flat so that the vitreous body could be removed by blotting with filter paper and gentle brushing. Samples of the retina were taken at the center and periphery. Each sample was then cryoprotected in 30% sucrose overnight and embedded in Shandon embedding media at -65°C . The blocks were cut in $20\ \mu\text{m}$ sections at -18°C with a Leica CM3050S cryostat and mounted onto

gelatinized subbed glass slides, air dried, and stored at -80°C for further processing.

2.2. Immunofluorescence. Single, double, and triple labeling of the retina were performed according to previously published methods [23, 24, 30]. Briefly, the sections were postfixated for 5 minutes in 70% ethanol, rinsed 3×5 minutes in 0.1 M Tris buffer and pH 7.4/0.03% Triton and blocked for 90 minutes in 10% normal donkey serum (NDS) in 0.1 M Tris buffer/0.5% Triton. Sections were then incubated with primary antibodies prepared in blocking solution overnight at room temperature. The cannabinoid-related antibodies (CB1R, NAPE-PLD, FAAH, CB2R, DAGL α , and MAGL) were also used conjointly with a known specific retinal cell-type marker (Table 1). The next day, sections were washed for 10 minutes and 2×5 minutes in 0.1 M Tris/0.03% Triton. Then, they were blocked in 10% NDS and 0.1 M Tris/0.5% Triton for 60 minutes and incubated with secondary antibody for one hour (Alexa 488 donkey anti-mouse and biotinylated donkey anti-rabbit followed by the addition of streptavidin-Alexa 647 (1:200), all prepared in blocking solution). Sections were counterstained with Sytox Green Nucleic Acid Stain (1:50,000; Molecular Probes, Inc., Eugene, OR), washed again in Tris buffer, and coverslipped with Fluoromount-G[™] Mounting Medium (SouthernBiotech, Birmingham, AL).

2.3. Antibody Characterization. In this study, we were confronted with the problem concerning the specificity of some of the antibodies, especially for the tree shrew. Although knockout animals are the best way to test the specificity of antibodies, this model is available only for mice and not for tree shrews and monkeys. We therefore resorted to the use of conventional alternative methods to circumvent this methodological limitation [23–27]. We have previously published Western blot results for mice and vervet monkeys [23–25]. For tree shrews and macaques, the tissue was not made available to us. Therefore, we resorted to the traditional blocking techniques presented in the paper as BP in Figures 1 and 2. Table 1 summarizes the source and the working dilution of all the primary antibodies. The antibodies used in the present study were characterized and published in previous publications: calbindin [23, 31–35], CB1R [23, 26], CB2R [24, 36], DAGL α [26], FAAH [23, 27], GS [23, 37–39], MAGL, NAPE-PLD [40], rhodopsin [30, 41], and PKC α [23, 26, 27, 34].

2.4. Confocal Microscopy. Immunofluorescence images were taken according to [30]. Using a Leica TCS SP2 confocal laser-scanning microscope (Leica Microsystems, Exton, PA), with a 40x (n.a.: 1.25) or a 100x (n.a.: 1.40–0.7) objective, images were obtained sequentially from the green, blue, or far-red channels on optical slices of less than $0.9\ \mu\text{m}$ of thickness. All photomicrograph adjustments, including size, color, brightness, and contrast, were done with Adobe Photoshop (CS5, Adobe Systems, San Jose, CA) and then exported to Adobe InDesign (CS5, Adobe Systems, San Jose, CA), where the final figure layout was completed.

TABLE 1: List of antibodies used in this study.

Antibody ¹	Immunogen	Source ²	Working dilution
CB	Purified bovine kidney calbindin-D28K	Sigma-Aldrich, St. Louis, MO; C9848, mouse monoclonal, clone CB0955	1: 250
CB1R	Fusion protein containing aa 1-77 of rat CB1R	Calbiochem, Gibbstown, NJ; 209550, rabbit polyclonal	1: 150
CB2R	Synthetic peptide corresponding to aa 20-33 of human CB2R	Cayman Chemical, Ann Arbor, MI; 101550, rabbit polyclonal	1: 150
DAGL α	Peptide with sequence CPAKQDELVISAR, from the C Terminus of the protein sequence	Novus, Littleton, CO; NBP2-31856, rabbit polyclonal	1: 100
FAAH	Synthetic peptide aa 561-579 of rat FAAH	Cayman Chemical, Ann Arbor, MI; 101600, rabbit polyclonal	1: 150
GS	Full protein purified from sheep brain	Chemicon, Temecula, CA; MAB302, mouse monoclonal, clone GS-6	1: 500
MAGL	Human MAGL aa 1-14	Cayman Chemical, Ann Arbor, MI; 100035, rabbit polyclonal	1: 150
NAPE-PLD	Purified protein corresponding to aa 159-172 NAPE-PLD human	Cayman Chemical, Ann Arbor, MI; 10305, rabbit polyclonal	1: 200
Rhodopsin	Bovine rhodopsin	Abcam, Toronto, ON; ab98887, mouse monoclonal, clone Rho 4D2	1: 500
PKC α	Peptide mapping the aa 296-317 of human PKC α	Santa Cruz Biotechnology, Santa Cruz, CA; sc-8393, mouse monoclonal, clone H-7	1: 500

¹CB: calbindin; CB1R: cannabinoid receptor type 1; CB2R: cannabinoid receptor type 2; DAGL α : diacylglycerol lipase alpha; FAAH: fatty acid amide hydrolase; GS: glutamine synthetase; MAGL: monoacylglycerol lipase; NAPE-PLD: *N*-acyl phosphatidylethanolamine-specific phospholipase D; PKC α : protein kinase C α (alpha isoform); aa: amino acids.

²The source column indicates the commercial company, catalog reference, and origin. The clone designation is given for monoclonal antibodies.

3. Results

3.1. Single-Label Immunofluorescence

3.1.1. CB1R Is Present Throughout the Retina of All Three Species. A fairly consistent retinal distribution pattern of CB1R across all six retinal layers was observed in mice, tree shrews, vervet, and rhesus monkeys, as illustrated in immunolabeled retinal sections (Figures 1(a)–1(d)). The most significant difference between species is the low expression of CB1R in the ONL of mice when compared to all other species (arrows, Figures 1(a)–1(d)). Furthermore, high expression of CB1R is seen in the GCL and NFL of all species (arrowheads, Figures 1(a)–1(d)).

3.1.2. FAAH Expression Is Found Throughout the Retina of All Three Species. FAAH, like CB1R, is well expressed in all retinal layers and in the photoreceptor layer of all species (Figures 1(e)–1(h)). In all species, there is a moderate protein expression in the INL (arrows, Figures 1(e)–1(h)). Remarkably, there is an important expression of FAAH in the NFL of all species (arrowheads, Figures 1(e)–1(h)).

3.1.3. NAPE-PLD Distribution Is Dissimilar between the Species. In mice, NAPE-PLD is widely distributed in all layers but more intensely in the NFL (arrowhead, Figure 1(i)). In tree shrews, NAPE-PLD is found in all six retinal layers, moderately in the INL (arrow, Figure 1(j)) and prominently in the OPL and NFL (arrowheads, Figure 1(j)). Inversely, in

both vervet and macaque monkeys, NAPE-PLD is located in the outer retina, mainly in photoreceptors, ONL and OPL (arrowheads in Figures 1(k) and 1(l)), whilst it is undetectable in the inner retinal layers (asterisks, Figures 1(k) and 1(l)).

3.1.4. CB2R Is Differently Expressed among the Species. Unlike CB1R, the immunolabeling pattern of CB2R is not consistent in the 3 species. In mice, CB2R is moderately detectable in ONL and in INL (arrows Figure 2(a)) but strongly expressed in OPL, IPL, GCL, and NFL (arrowheads, Figure 2(a)). In tree shrews, CB2R is expressed throughout all retinal cell layers with more emphasis (contrary to the mouse) in the external layers (ONL) (upper arrowhead, Figure 2(b)) and NFL (lower arrowhead, Figure 2(b)). In both vervets and macaques, CB2R expression is more abundant in ONL (arrowheads, Figures 2(c) and 2(d)) and is very low in the lower layers (INL, IPL, GCL, and NFL) (asterisks, Figures 2(c) and 2(d)).

3.1.5. Localization of MAGL. In mice, MAGL is expressed in the ONL, OPL, INL, IPL, GCL, and NFL (Figure 2(e)). The most prominent staining is observed in the OPL, in the two laminae of the IPL and in the NFL, as previously described [28] (arrowheads, Figure 2(e)). In tree shrews, MAGL is expressed in all layers and most strongly in the INL and GCL (arrowheads, Figure 2(f)). In vervets and macaques, MAGL is expressed mainly in the OPL (arrowheads, Figures 2(g) and 2(h)). It is also found moderately in the IPL and GCL (arrows, Figures 2(g) and 2(h)).

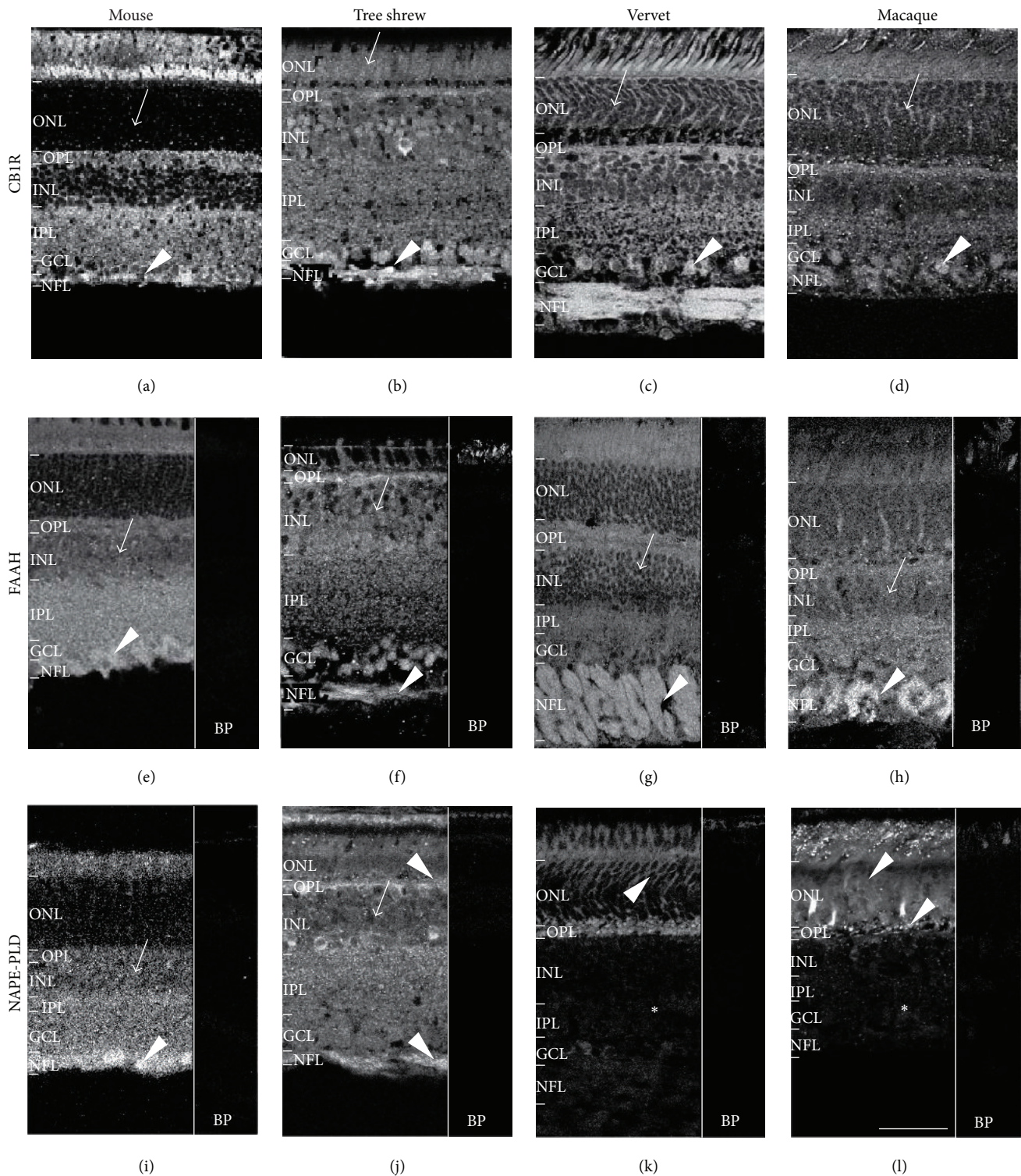


FIGURE 1: CBIR system immunoreactivity pattern in the retina. Shown are retinal sections immunolabeled for CBIR ((a)–(d)), FAAH ((e)–(h)), and NAPE-PLD ((i)–(l)) in mice, tree shrews, vervet, and macaque monkeys. The control staining, antibody preabsorption with the corresponding blocking peptide (BP), is also shown for FAAH and NAPE-PLD in all species. Arrows point to low to moderate expression of CBIR, FAAH, and NAPE-PLD in the retina of all species and arrowheads to high expression of these proteins. The asterisks indicate undetectable expression of NAPE-PLD in the inner retina of monkeys. ONL: outer nuclear layer; OPL: outer plexiform layer; INL: inner nuclear layer; IPL: inner plexiform layer; GCL: ganglion cell layer; NFL: nerve fiber layer. Scale bar = 75 μ m.

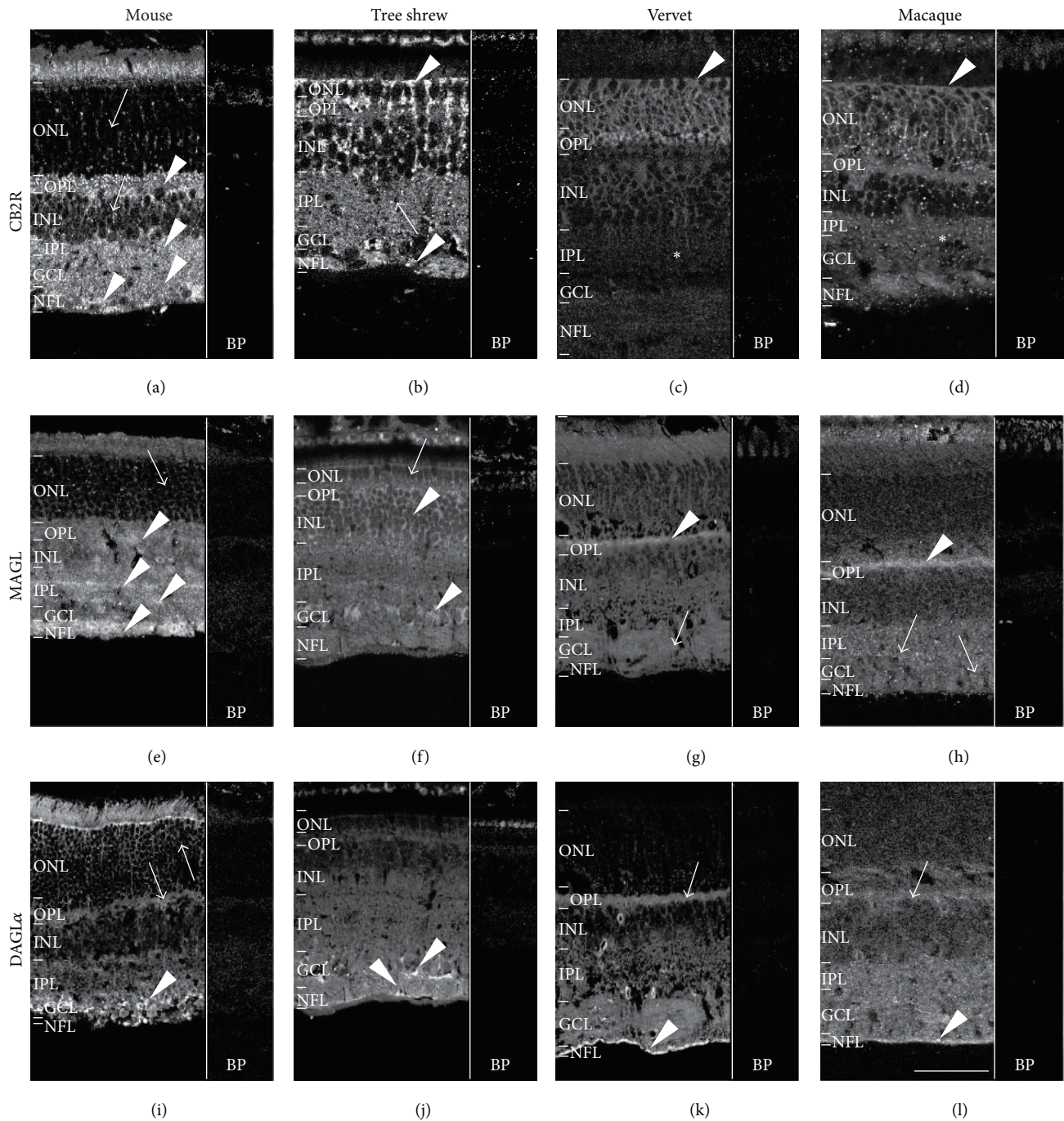


FIGURE 2: CB2R system immunoreactivity pattern in the retina. Shown are retinal sections immunolabeled for CB2R ((a)–(d)), MAGL ((e)–(h)), and DAGL α ((i)–(l)) in mice, tree shrews, vervet, and macaque monkeys. The control staining, antibody preabsorption with the corresponding blocking peptide (BP), is also shown for CB2R, MAGL, and DAGL α in all species. Arrows point to low to moderate expression of CB2R, MAGL, and DAGL α in the retina all species and arrowheads to their high expression. The asterisks indicate expression of CB2R under the detection level in the inner retina of monkeys. ONL: outer nuclear layer; OPL: outer plexiform layer; INL: inner nuclear layer; IPL: inner plexiform layer; GCL: ganglion cell layer; NFL: nerve fiber layer. Scale bar = 75 μ m.

3.1.6. *Expression of the DAGL α .* In mice, DAGL α is weakly expressed in the INL, moderately in OPL and ONL (arrows, Figure 2(i)) but more strongly in the IPL (arrowhead, Figure 2(i)). This result is consistent with that obtained in the mouse retina [28] and in the rat retina [29] that showed

expression in the two synaptic layers, the OPL and IPL. DAGL α is also highly expressed in the GCL and NFL in the mouse retina (Figure 2(i)). In tree shrews, the DAGL α is strongly expressed in the GCL and NFL (arrowheads, Figure 2(j)). In vervets and macaques, DAGL α is moderately

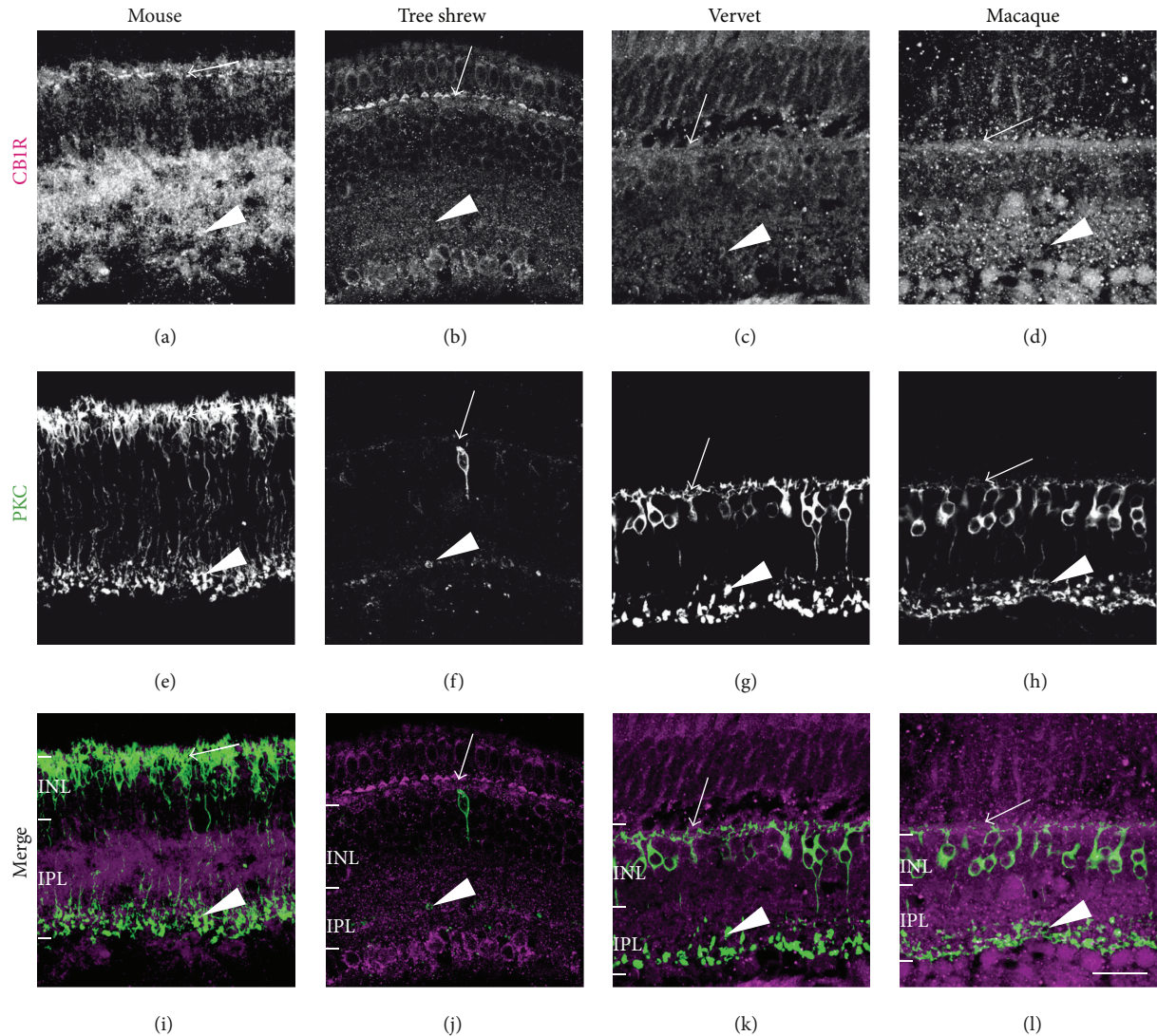


FIGURE 3: CB1R immunoreactivity in rod bipolar cells. Vertical sections taken from the mouse retina (first column), tree shrew retina (second column), vervet retina (third column), and macaque retina (fourth column). Confocal micrographs of coimmunolabeling for CB1R and the cell-type-specific marker for rod bipolar cells, protein kinase C alpha ($PKC\alpha$). Each protein expression is presented alone in grayscale: CB1R in the first line and $PKC\alpha$ in the second line; then the two are presented merged (third line: CB1R in magenta and $PKC\alpha$ in green). Arrows point to dendrites ascending into the OPL, where rod spherules are found, and arrowheads point to synaptic terminals in the IPL. INL: inner nuclear layer; IPL: inner plexiform layer. Scale bar = $30\ \mu\text{m}$.

expressed in the OPL (arrows, Figures 2(k) and 2(l)), whilst there is a high expression in the NFL (arrowheads, Figures 2(k) and 2(l)).

3.2. Double-Label Immunofluorescence. To verify the retinal cell-type expression, double immunostaining was carried out with each eCB component and a specific molecular marker for retinal cells.

3.2.1. CB1R and Rod Bipolar Cells. $PKC\alpha$ that labels rod bipolar cells and a subset of amacrine cells is similarly coexpressed with CB1R in the dendrites extending to the OPL (arrows, Figure 3) and synaptic terminals in the IPL in all species (arrowheads, Figure 3). This is in accordance with

previous data reported in rats [26] and vervet monkeys [23] by our group.

3.2.2. CB2R and Müller Cells. To label Müller cells, glutamine synthetase (GS) was used. This antibody has proved to be efficient to label Müller cells in the rat [38], mouse [25], and monkey retinas [23, 24, 39]. In mice, CB2R is weakly expressed in the ONL (Figures 4(a), 4(e), and 4(i)) although intense expression was found in the inner layers. CB2R was not found in Müller cells in the mouse retina as previously reported [25]. In tree shrews, CB2R and GS were both expressed in the photoreceptor layer and ONL (arrow, Figures 4(b), 4(f), and 4(j)). Overall, CB2R is colocalized with GS in the outer retina but not in the inner retina (Figure 4(j)). In both vervet and macaque monkeys, double labeling of CB2R

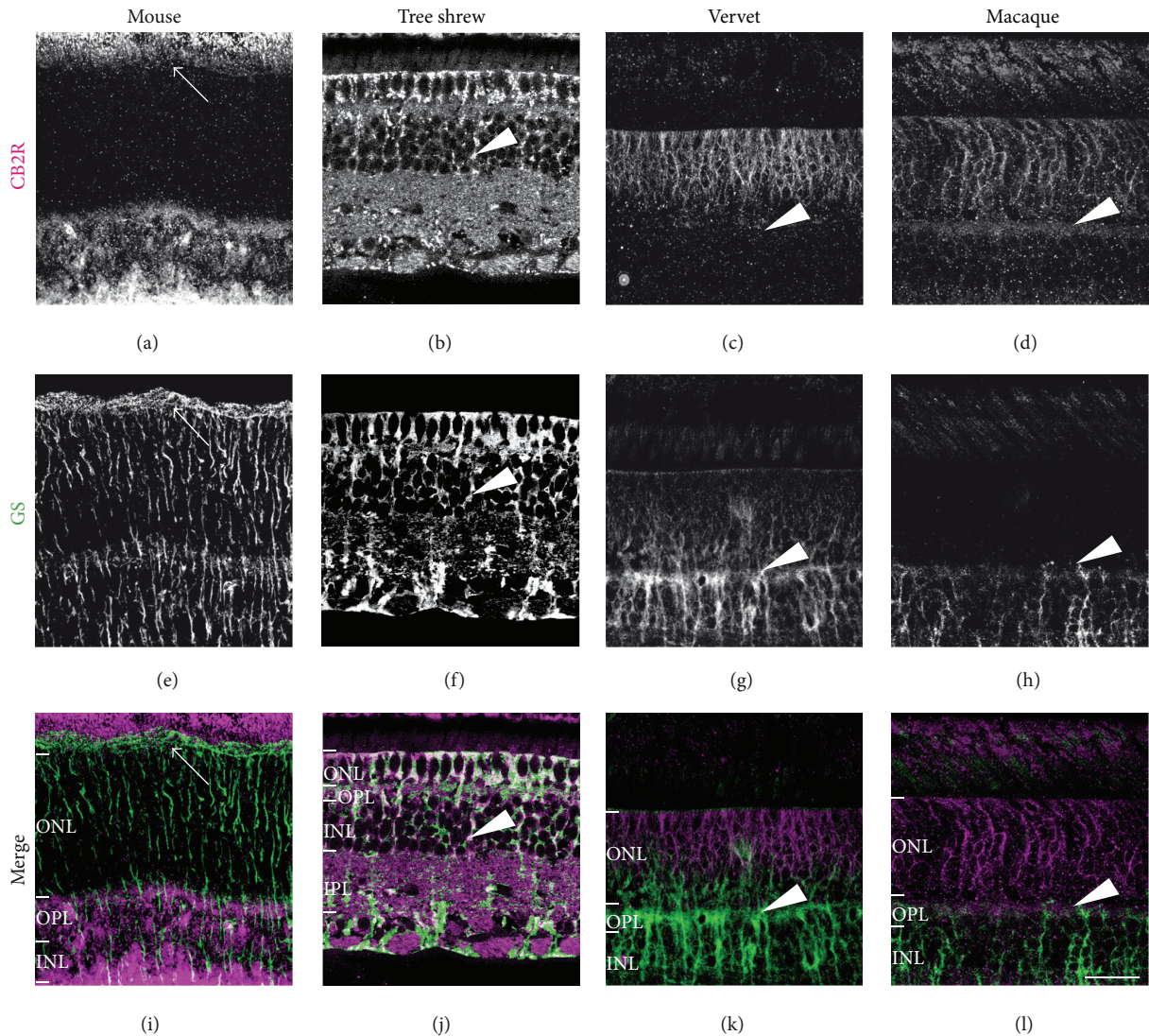


FIGURE 4: CB2R immunoreactivity in Müller cells. Vertical sections from the mouse retina (first column), tree shrew retina (second column), vervet retina (third column), and macaque retina (fourth column). Confocal micrographs of coimmunolabeling for CB2R and the cell-type-specific marker for glial Müller cells, glutamine synthetase (GS). Each protein immunofluorescent signal is presented alone in grayscale: CB2R in the first line and GS in the second line; then the two are presented merged (third line: CB2R in magenta and GS in green). Arrowheads point to Müller cell processes that all express CB2R, except in mice (arrows). ONL: outer nuclear layer; OPL: outer plexiform layer; INL: inner nuclear layer; IPL: inner plexiform layer. Scale bar = 30 μm .

and GS shows that CB2R is restricted to Müller cell processes, extending from the internal limiting membrane, with very low staining, to the external limiting membrane, with heavy labeling (arrowheads, Figures 4(c), 4(g), 4(k), 4(d), 4(h), and 4(l)). These results indicate that the expression of CB2R in Müller cells is a feature of tree shrews and monkeys.

3.2.3. NAPE-PLD and Calbindin-Positive Retinal Cells. Calbindin (CB) is a marker of cones outside the foveal region, cone bipolar cells, and a subset of horizontal cells in tree shrews and monkeys [23, 32]. On the contrary, in mice, CB is a marker of horizontal cells and is present in OPL with a weak colocalization of NAPE-PLD (Figures 5(a), 5(e), and 5(i)). In both mice and tree shrews CB-positive cell

bodies found in the INL do not express NAPE-PLD (arrows, Figures 5(a), 5(e), 5(i), 5(b), 5(f), and 5(j)). In fact, CB is coexpressed with NAPE-PLD in the OPL of tree shrews (arrowheads, Figures 5(b), 5(f), and 5(j)). CB is expressed in the ONL of the monkey retina where NAPE-PLD is abundant (arrowheads, Figures 5(c), 5(g), 5(k), 5(d), 5(h), and 5(l)) and highly coexpressed with NAPE-PLD in the axons of cone photoreceptors (arrowheads, Figures 5(c), 5(g), 5(k), 5(d), 5(h), and 5(l)).

3.2.4. NAPE-PLD and Rods. The rhodopsin antibody was used to label rods in the retina. In the mouse, NAPE-PLD is not coexpressed with rods (arrows, Figures 6(a), 6(e), and 6(i)). Furthermore, in the cone-dominant retina of the

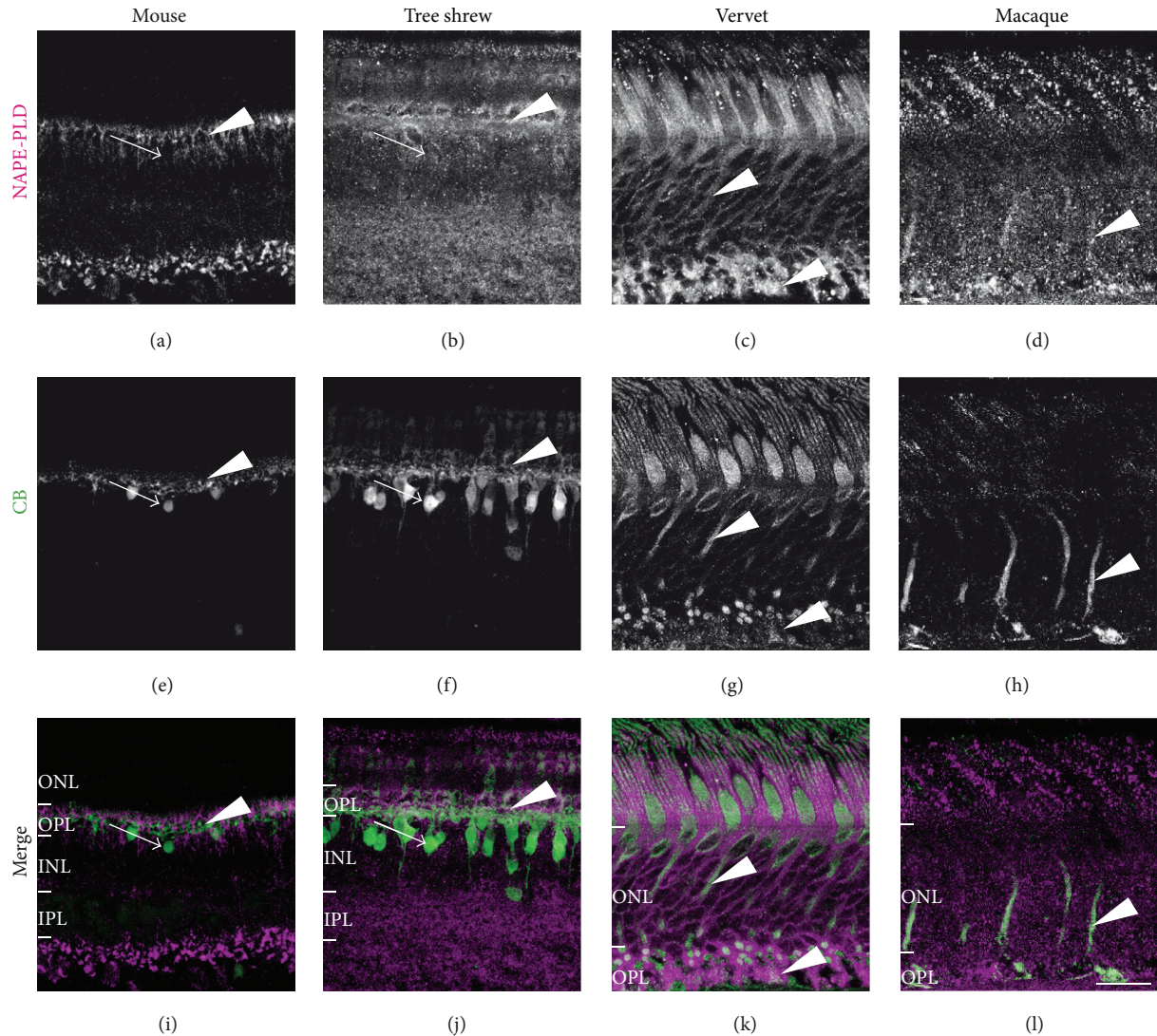


FIGURE 5: NAPE-PLD immunoreactivity in calbindin-positive retinal cells. Vertical sections from the mouse retina (first column), tree shrew retina (second column), vervet retina (third column), and macaque retina (fourth column). Confocal micrographs of coimmunolabeling for the synthesizing enzyme NAPE-PLD and a cell-type-specific marker for horizontal cells or cones; in mice and tree shrews, calbindin (CB) labels horizontal cells; in monkeys, CB labels cones. Each protein expression is presented alone in grayscale: NAPE-PLD in the first line and the CB in the second line; then the two are presented merged (third line: NAPE-PLD in magenta and the CB in green). Arrowheads point to the processes of CB-positive cells that express the synthesizing enzyme NAPE-PLD and arrows point to CB-positive cells bodies, which do not express NAPE-PLD. ONL: outer nuclear layer; OPL: outer plexiform layer; INL: inner nuclear layer; IPL: inner plexiform layer. Scale bar = 30 μm .

tree shrew with only very few rods, NAPE-PLD is also not colocalized with rods (arrows, Figures 6(b), 6(f), and 6(j)). However, in vervet and macaque monkeys, NAPE-PLD is expressed in rods (arrowheads, Figures 6(c), 6(g), 6(k), 6(d), 6(h), and 6(l)).

4. Discussion

In this study, we compared the localization of 2 cannabinoid receptors (CB1R and CB2R), 2 endocannabinoid synthesizing enzymes (NAPE-PLD and DAGL α), and 2 endocannabinoid degrading enzymes (FAAH and MAGL) in the retina of mice, tree shrews, and monkeys. This is the first study that

shows the expression pattern of all the above-mentioned eCB components in the tree shrew retina as well as the localization of the NAPE-PLD, MAGL, and DAGL α in the monkey retina (Figure 7). These phylogenetically related species were chosen due to the specialization of their visual systems: from the primitive monocular, rod-dominated visual system in mice with a low visual resolution to the well-developed visual system in monkeys [42] that is similar to humans [43]. Tree shrews are a species with binocular cone-dominated vision that is phylogenetically between mice and monkeys [21, 44].

4.1. The Cannabinoid Receptors: Localization versus Function. We recently reported that the distribution of the CB2R in the

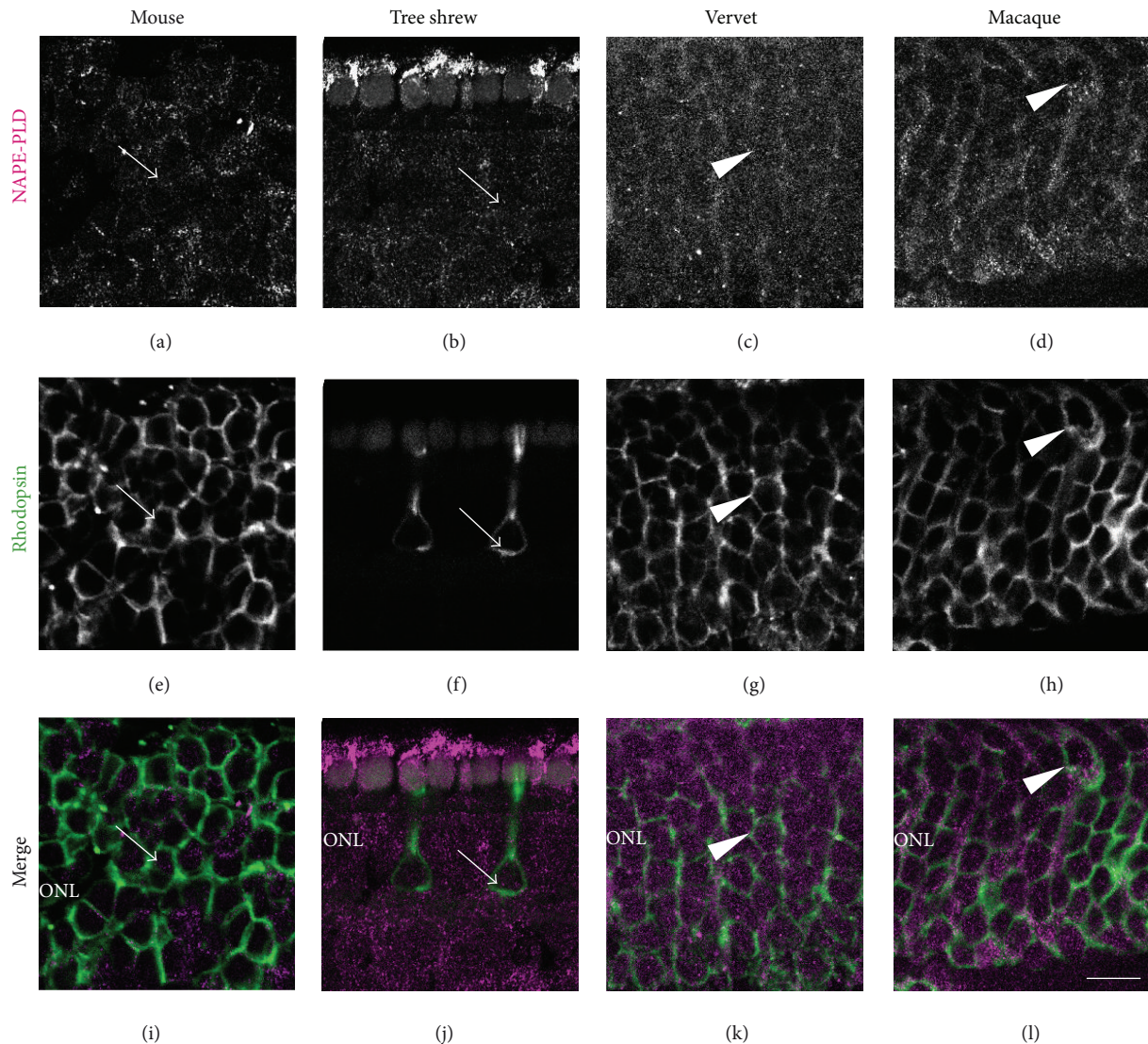


FIGURE 6: NAPE-PLD immunoreactivity in rod photoreceptors. Vertical sections from the mouse retina (first column), tree shrew retina (second column), vervet retina (third column), and macaque retina (fourth column). Confocal micrographs of coimmunolabeling for the synthesizing enzyme NAPE-PLD and the cell-type-specific marker for rods, rhodopsin. Each immunofluorescent signal is presented alone in grayscale: NAPE-PLD in the first line and rhodopsin in the second line; then the two are presented merged (third line: NAPE-PLD in magenta and rhodopsin in green). Arrowheads point to rhodopsin-positive cell bodies that express NAPE-PLD in vervet and macaque monkeys only, and arrows mark the lack of colocalization. ONL: outer nuclear layer. Scale bar = 30 μm .

primate retina [24] is different than the rodent retina [25]. While the CB2R is expressed in the rodent retinal neuronal cells [25], it is only expressed in the primate retinal glia, the Müller cells [24]. This finding prompted us to look into the retinal eCB system expression profiles across species. Interestingly, we show that only some components of the eCB system are preserved across the three animal species studied here while others are strikingly different. Notably, as reported by Elphick in his thought-provoking review [5], CB1R and CB2R are unique to chordates, but the enzymes involved in the biosynthesis and the inactivation of the eCBs like NAPE-PLD and FAAH are found throughout the animal kingdom [4]. These proteins may have therefore evolved as presynaptic or postsynaptic receptors for eCBs. This is fascinating because

the expression and localization of CB1R and FAAH are similar in mice, tree shrews, and primates, while it is not the case for CB2R, NAPE-PLD, MAGL, and DAGL α (Figure 7).

There are many controversies on the neuronal and/or peripheral expression of CB2R. Our results show that the expression pattern of the CB2R differs from the mouse to the monkey. Similar to CB1R, CB2R shows a general expression in the neuroretina: photoreceptors, horizontal cells, amacrine cells, and cells localized in the GCL of rodents [25, 45]. In the mouse, CB2R, expressed in the photoreceptor layer, was mostly found in cones and some rods [25]. Similar to its position in the phylogeny tree, the tree shrew has an in-between position showing expressions in all layers, as in rodents, and in Müller cells, as in primates (Figure 2(b)). In

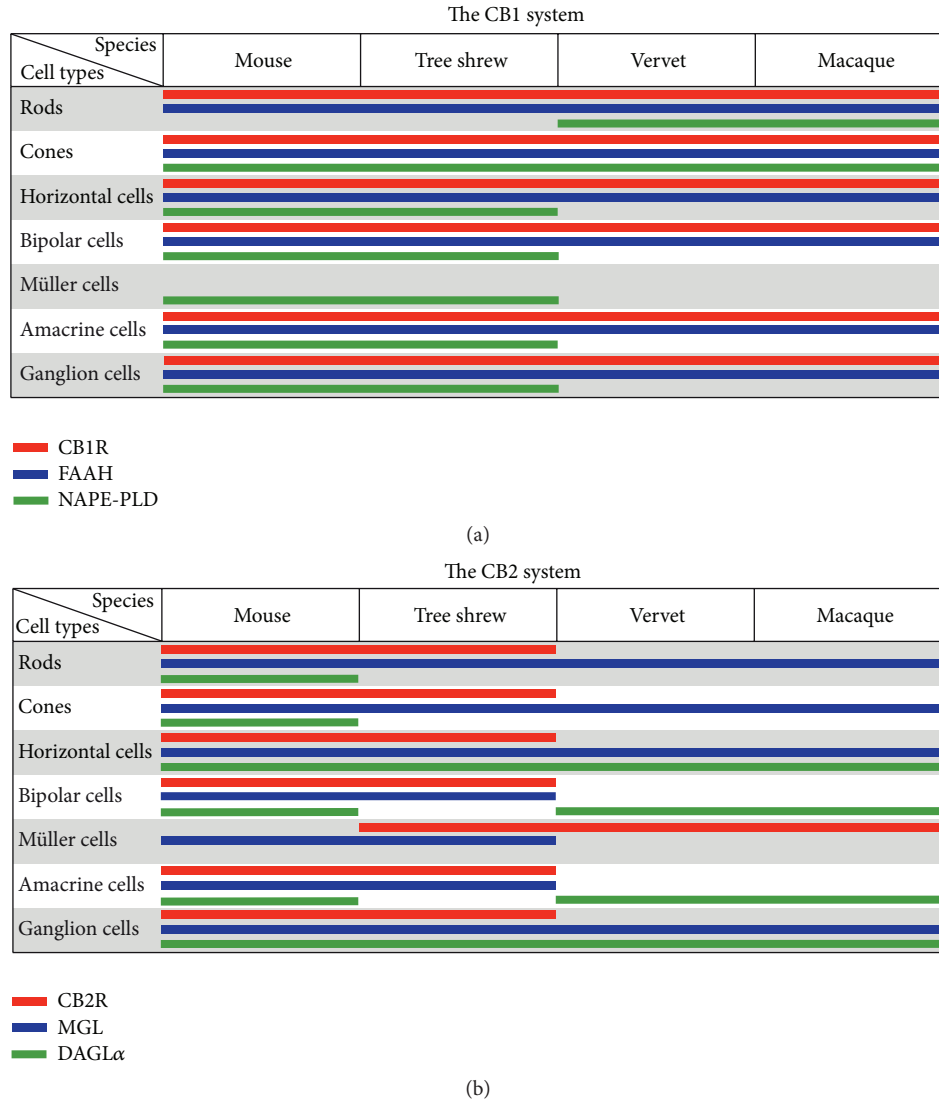


FIGURE 7: Comparison of the expression patterns of the CB1 system components CB1R, FAAH, and NAPE-PLD (a) and of the CB2 system components CB2R, MAGL, and DAGL α (b) in the retina of mice, tree shrews, vervets, and macaques. Our results are complemented by data from previously published work [23, 26, 28, 29].

agreement with the CB2R glial expression in the CNS, the primate retina expresses CB2R mainly in Müller cells, with a higher polarization towards the outer retina [24]. The Müller cells, with their unique anatomy, span the entire thickness of the retina and contact with the majority of the retinal neurons [46]. This complementary expression pattern of CB1R and CB2R in the primate retina reveals thus a reciprocal relationship between retinal neurons and glia regarding their function via the eCB system. The ubiquitous CB1R system may play a more general role in the light transduction in all three species, as previously suggested [17].

4.2. Significance of the Distribution Pattern of Enzymes and Cannabinoid Receptors. The expression pattern of CB1R and FAAH has been reported in the CNS as complementary, overlapping, or unrelated distributions [17, 47]. Here, we report an overlapping distribution; CB1R expressing neurons

also express FAAH. In this case, the degrading enzyme may remotely influence the CB1R [47]. During development of the mouse retina, CB1R and FAAH expression patterns are present in the deepest neuroblast layers at birth and spread out throughout the retina in adulthood [26, 27]. In our three species, the FAAH expression overlaps the CB1R distribution pattern not only in the photoreceptor layers but also in the ganglion cells (Figures 1(a)–1(d) and 1(i)–1(l)). This suggests that cannabinoids act not only on photoreceptors [17] but also directly on ganglion cell. This expression pattern has been reported not only in the retina of the vervet monkey [23] but also in the optic nerve, the dorsal lateral geniculate nucleus [40], and the visual cortex of monkeys [48]. While NAPE-PLD and FAAH are overlapping in different layers of the mouse and tree shrew retinas, they are complementarily expressed in the monkey retina. This unique complementary spatial relationship between NAPE-PLD (exclusively in the

photoreceptor layer) and FAAH (in the inner retina) might ensure optimal retinal function in highly developed retinas. However, further experiments are needed to test this hypothesis.

Anandamide (an endogenous agonist of the CB1R) and other *N*-acylethanolamines (NAEs) are biosynthesized from phospholipids of the cell membrane assisted by NAPE-PLD hydrolysis. In this study, we report a variation in the expression of this membrane associated synthesis enzyme, NAPE-PLD, despite its well-preserved sequence from rodents to humans [49]. In the mouse, NAPE-PLD follows the same pattern of expression as CB1R and FAAH, except that it is not found in rods. Moreover, unlike the mouse but like the primate, the tree shrew has a high expression of NAPE-PLD in ONL and OPL. We show here for the first time that NAPE-PLD expression in monkeys is exclusively restricted to the photoreceptor layer. Unlike CB1R, NAPE-PLD is ubiquitously expressed in the rat brain with the highest level in the thalamus [50]. Besides its role in the eCB biosynthesis, many other physiological roles have been linked to NAPE-PLD such as anti-inflammatory effect [51], anorexic effect [52], and proapoptotic effect [53]. Moreover, the NAE products in axons suggest a role in the regulation of postsynaptic neuron activity as anterograde synaptic signaling molecules [54]. This pattern of expression also suggests another direct role of NAEs in primate phototransduction.

Given that the lipophilic eCBs are released and degraded close to their action site, it would be reasonable to assume that the DAGL α and MAGL expressions are in the vicinity of CB2R. In the mouse retina, the DAGL α and MAGL expressions are often near or in the same cell types as CB1R and CB2R. CB1R is present in cones, horizontal, bipolar, amacrine, and ganglion cells in the rat retina [26, 27]. CB2R is present in cone and rod photoreceptors, horizontal, bipolar, amacrine, and ganglion cells in the adult mouse retina [25]. This distribution pattern may suggest that, in the mouse retina, eCBs such as 2-arachidonoyl glycerol are faithfully expressed adjacent to the cannabinoid receptors and could be involved in their retinal function [25]. But the primates and the tree shrews have followed a complementary distribution pattern, and may have adopted a more complex and specific strategy to regulate their visual activity via the eCB system. The eCB expression pattern in the mouse rod-dominated retina with monocular vision, the tree shrew cone-dominated retina with binocular vision, and the monkey duplex retina with binocular vision proposed that the retinal eCB system plays a fundamental role in the mammal visual processing.

Conflict of Interests

The authors declare no conflict of interests.

Authors' Contribution

All authors had full access to all the data collected in the study and take responsibility for the integrity of these data and the accuracy of the analysis. Joseph Bouskila, Pasha Javadi, Maurice Ptito, and Jean-François Bouchard were

responsible for study concept and design. Joseph Bouskila, Laurent Elkrief, and Pasha Javadi were responsible for acquisition of data. Joseph Bouskila, Laurent Elkrief, Pasha Javadi, Jean-François Bouchard, and Maurice Ptito were responsible for analysis and interpretation of data. Joseph Bouskila and Pasha Javadi were responsible for drafting of the paper. Maurice Ptito, Jean-François Bouchard, and Christian Casanova were responsible for critical revision of the paper for important intellectual content. Christian Casanova, Maurice Ptito, and Jean-François Bouchard obtained funding. Christian Casanova, Maurice Ptito, and Jean-François Bouchard were responsible for administrative, technical, and material support. Maurice Ptito and Jean-François Bouchard were responsible for study supervision.

Acknowledgments

The Natural Science and Engineering Research Council of Canada (RGPAS 478115-2015 and RGPIN 2015-06582 Jean-François Bouchard; 6362-2012, Maurice Ptito; 194670-2014, Christian Casanova) and the Canadian Institutes of Health Research (CIHR) (MOP-86495, Jean-François Bouchard, MOP-301710, Jean-François Bouchard and Christian Casanova) supported this work. Joseph Bouskila received support from a Frederick Banting and Charles Best Canada Graduate Scholarship Doctoral Award from CIHR. Maurice Ptito is Harland Sanders Chair professor in Visual Science. Jean-François Bouchard is supported by a "Chercheur-Boursier Senior" from Fonds de Recherche du Québec-Santé (FRQ-S). The authors are grateful to Dr. Frank Ervin and Dr. Roberta Palmour of St.-Kitts, West Indies, for supplying the vervet monkey eyes. They would like to thank Dr. Amir Shmuel from the Montreal Neurological Institute for donating the macaque eyes. They also would like to thank Reza Abbas Farishta for graciously preparing the tree shrew eyes.

References

- [1] J. M. McPartland, J. Agraval, D. Gleeson, K. Heasman, and M. Glass, "Cannabinoid receptors in invertebrates," *Journal of Evolutionary Biology*, vol. 19, no. 2, pp. 366–373, 2006.
- [2] J. M. McPartland, R. W. Norris, and C. W. Kilpatrick, "Coevolution between cannabinoid receptors and endocannabinoid ligands," *Gene*, vol. 397, no. 1-2, pp. 126–135, 2007.
- [3] E. Cottone, V. Pomatto, F. Cerri et al., "Cannabinoid receptors are widely expressed in goldfish: molecular cloning of a CB2-like receptor and evaluation of CB1 and CB2 mRNA expression profiles in different organs," *Fish Physiology and Biochemistry*, vol. 39, no. 5, pp. 1287–1296, 2013.
- [4] J. M. McPartland, I. Matias, V. Di Marzo, and M. Glass, "Evolutionary origins of the endocannabinoid system," *Gene*, vol. 370, no. 1-2, pp. 64–74, 2006.
- [5] M. R. Elphick, "The evolution and comparative neurobiology of endocannabinoid signalling," *Philosophical Transactions of the Royal Society B: Biological Sciences*, vol. 367, no. 1607, pp. 3201–3215, 2012.
- [6] T. P. Dinh, D. Carpenter, F. M. Leslie et al., "Brain monoacylglyceride lipase participating in endocannabinoid inactivation,"

- Proceedings of the National Academy of Sciences of the United States of America*, vol. 99, no. 16, pp. 10819–10824, 2002.
- [7] V. Di Marzo, “The endocannabinoid system: its general strategy of action, tools for its pharmacological manipulation and potential therapeutic exploitation,” *Pharmacological Research*, vol. 60, no. 2, pp. 77–84, 2009.
 - [8] T. Harkany, M. Guzmán, I. Galve-Roperh, P. Berghuis, L. A. Devi, and K. Mackie, “The emerging functions of endocannabinoid signaling during CNS development,” *Trends in Pharmacological Sciences*, vol. 28, no. 2, pp. 83–92, 2007.
 - [9] T. Harkany, E. Keimpema, K. Barabás, and J. Mulder, “Endocannabinoid functions controlling neuronal specification during brain development,” *Molecular and Cellular Endocrinology*, vol. 286, no. 1-2, supplement 1, pp. S84–S90, 2008.
 - [10] A. Argaw, G. Duff, N. Zabouri et al., “Concerted action of CB1 cannabinoid receptor and deleted in colorectal cancer in axon guidance,” *Journal of Neuroscience*, vol. 31, no. 4, pp. 1489–1499, 2011.
 - [11] G. Duff, A. Argaw, B. Cécyre et al., “Cannabinoid receptor CB2 modulates axon guidance,” *PLoS ONE*, vol. 8, no. 8, Article ID e70849, 2013.
 - [12] J. Y. Xu and C. Chen, “Endocannabinoids in synaptic plasticity and neuroprotection,” *The Neuroscientist*, vol. 21, no. 2, pp. 152–168, 2015.
 - [13] R. J. Bluett, J. C. Gamble-George, D. J. Hermanson, N. D. Hartley, L. J. Marnett, and S. Patel, “Central anandamide deficiency predicts stress-induced anxiety: behavioral reversal through endocannabinoid augmentation,” *Translational Psychiatry*, vol. 4, no. 7, article e408, 2014.
 - [14] J. M. McPartland, G. W. Guy, and V. Di Marzo, “Care and feeding of the endocannabinoid system: a systematic review of potential clinical interventions that upregulate the endocannabinoid system,” *PLoS ONE*, vol. 9, no. 3, Article ID e89566, 2014.
 - [15] E. B. Russo, “Clinical endocannabinoid deficiency (CECD): can this concept explain therapeutic benefits of cannabis in migraine, fibromyalgia, irritable bowel syndrome and other treatment-resistant conditions?” *Neuro Endocrinology Letters*, vol. 25, no. 1-2, pp. 31–39, 2004.
 - [16] S. C. Smith and M. S. Wagner, “Clinical Endocannabinoid Deficiency (CECD) revisited: can this concept explain the therapeutic benefits of cannabis in migraine, fibromyalgia, irritable bowel syndrome and other treatment-resistant conditions?” *Neuroendocrinology Letters*, vol. 35, no. 3, pp. 198–201, 2014.
 - [17] S. Yazulla, “Endocannabinoids in the retina: from marijuana to neuroprotection,” *Progress in Retinal and Eye Research*, vol. 27, no. 5, pp. 501–526, 2008.
 - [18] Y. Fan, Z.-Y. Huang, C.-C. Cao et al., “Genome of the Chinese tree shrew,” *Nature Communications*, vol. 4, article 1426, 2013.
 - [19] C.-J. Jeon, E. Strettoi, and R. H. Masland, “The major cell populations of the mouse retina,” *The Journal of Neuroscience*, vol. 18, no. 21, pp. 8936–8946, 1998.
 - [20] G. T. Prusky and R. M. Douglas, “Characterization of mouse cortical spatial vision,” *Vision Research*, vol. 44, no. 28, pp. 3411–3418, 2004.
 - [21] B. Müller and L. Peichl, “Horizontal cells in the cone-dominated tree shrew retina: morphology, photoreceptor contacts, and topographical distribution,” *Journal of Neuroscience*, vol. 13, no. 8, pp. 3628–3646, 1993.
 - [22] A. Straiker, N. Stella, D. Piomelli, K. Mackie, H. J. Karten, and G. Maguire, “Cannabinoid CB1 receptors and ligands in vertebrate retina: localization and function of an endogenous signaling system,” *Proceedings of the National Academy of Sciences of the United States of America*, vol. 96, no. 25, pp. 14565–14570, 1999.
 - [23] J. Bouskila, M. W. Burke, N. Zabouri, C. Casanova, M. Ptito, and J.-F. Bouchard, “Expression and localization of the cannabinoid receptor type 1 and the enzyme fatty acid amide hydrolase in the retina of vervet monkeys,” *Neuroscience*, vol. 202, pp. 117–130, 2012.
 - [24] J. Bouskila, P. Javadi, C. Casanova, M. Ptito, and J.-F. Bouchard, “Müller cells express the cannabinoid CB2 receptor in the vervet monkey retina,” *Journal of Comparative Neurology*, vol. 521, no. 11, pp. 2399–2415, 2013.
 - [25] B. Cécyre, N. Zabouri, F. Huppé-Gourgues, J.-F. Bouchard, and C. Casanova, “Roles of cannabinoid receptors type 1 and 2 on the retinal function of adult mice,” *Investigative Ophthalmology and Visual Science*, vol. 54, no. 13, pp. 8079–8090, 2013.
 - [26] N. Zabouri, J.-F. Bouchard, and C. Casanova, “Cannabinoid receptor type 1 expression during postnatal development of the rat retina,” *Journal of Comparative Neurology*, vol. 519, no. 7, pp. 1258–1280, 2011.
 - [27] N. Zabouri, M. Ptito, C. Casanova, and J.-F. Bouchard, “Fatty acid amide hydrolase expression during retinal postnatal development in rats,” *Neuroscience*, vol. 195, pp. 145–165, 2011.
 - [28] S. S.-J. Hu, A. Arnold, J. M. Hutchens et al., “Architecture of cannabinoid signaling in mouse retina,” *Journal of Comparative Neurology*, vol. 518, no. 18, pp. 3848–3866, 2010.
 - [29] B. Cécyre, M. Monette, L. Beudjekian, C. Casanova, and J.-F. Bouchard, “Localization of diacylglycerol lipase alpha and monoacylglycerol lipase during postnatal development of the rat retina,” *Frontiers in Neuroanatomy*, vol. 8, article 150, 2014.
 - [30] J. Bouskila, P. Javadi, C. Casanova, M. Ptito, and J.-F. Bouchard, “Rod photoreceptors express GPR55 in the adult vervet monkey retina,” *PLoS ONE*, vol. 8, no. 11, Article ID e81080, 2013.
 - [31] C. Chiquet, O. Dkhissi-Benyahya, N. Chounlamountri, A. Szel, W. J. Degrip, and H. M. Cooper, “Characterization of calbindin-positive cones in primates,” *Neuroscience*, vol. 115, no. 4, pp. 1323–1333, 2002.
 - [32] A. J. Fischer, A. Hendrickson, and T. A. Reh, “Immunocytochemical characterization of cysts in the peripheral retina and pars plana of the adult primate,” *Investigative Ophthalmology and Visual Science*, vol. 42, no. 13, pp. 3256–3263, 2001.
 - [33] H. Kolb, L. Zhang, L. Dekorver, and N. Cuenca, “A new look at calretinin-immunoreactive amacrine cell types in the monkey retina,” *Journal of Comparative Neurology*, vol. 453, no. 2, pp. 168–184, 2002.
 - [34] G. C. Martínez-Navarrete, A. Angulo, J. Martín-Nieto, and N. Cuenca, “Gradual morphogenesis of retinal neurons in the peripheral retinal margin of adult monkeys and humans,” *Journal of Comparative Neurology*, vol. 511, no. 4, pp. 557–580, 2008.
 - [35] G. C. Martínez-Navarrete, J. Martín-Nieto, J. Esteve-Rudd, A. Angulo, and N. Cuenca, “ α -Synuclein gene expression profile in the retina of vertebrates,” *Molecular Vision*, vol. 13, pp. 949–961, 2007.
 - [36] B. Cécyre, S. Thomas, M. Ptito, C. Casanova, and J.-F. Bouchard, “Evaluation of the specificity of antibodies raised against cannabinoid receptor type 2 in the mouse retina,” *Naunyn-Schmiedeberg’s Archives of Pharmacology*, vol. 387, no. 2, pp. 175–184, 2014.
 - [37] M. R. Elphick and M. Egertová, “The phylogenetic distribution and evolutionary origins of endocannabinoid signalling,” in

- Cannabinoids*, R. G. Pertwee, Ed., vol. 168 of *Handbook of Experimental Pharmacology*, pp. 283–297, Springer, Berlin, Germany, 2005.
- [38] R. E. Riepe and M. D. Norenburg, “Muller cell localisation of glutamine synthetase in rat retina,” *Nature*, vol. 268, no. 5621, pp. 654–655, 1977.
- [39] S. Nishikawa and M. Tamai, “Müller cells in the human foveal region,” *Current Eye Research*, vol. 22, no. 1, pp. 34–41, 2001.
- [40] P. Javadi, J. Bouskila, J.-F. Bouchard, and M. Ptito, “The endocannabinoid system within the dorsal lateral geniculate nucleus of the vervet monkey,” *Neuroscience*, vol. 288, pp. 135–144, 2015.
- [41] Y. Ozawa, K. Nakao, T. Kurihara et al., “Roles of STAT3/SOCS3 pathway in regulating the visual function and ubiquitin-proteasome-dependent degradation of rhodopsin during retinal inflammation,” *The Journal of Biological Chemistry*, vol. 283, no. 36, pp. 24561–24570, 2008.
- [42] Y. B. Sirotin and A. Das, “Zooming in on mouse vision,” *Nature Neuroscience*, vol. 13, no. 9, pp. 1045–1046, 2010.
- [43] G. H. Jacobs, “Primate color vision: a comparative perspective,” *Visual Neuroscience*, vol. 25, no. 5-6, pp. 619–633, 2008.
- [44] B. Müller and L. Peichl, “Topography of cones and rods in the tree shrew retina,” *Journal of Comparative Neurology*, vol. 282, no. 4, pp. 581–594, 1989.
- [45] E. M. López, P. Tagliaferro, E. S. Onaivi, and J. J. López-Costa, “Distribution of CB2 cannabinoid receptor in adult rat retina,” *Synapse*, vol. 65, no. 5, pp. 388–392, 2011.
- [46] A. Reichenbach, C. Frömter, R. Engelmann, H. Wolburg, M. Kasper, and J. Schnitzer, “Müller glial cells of the tree shrew retina,” *Journal of Comparative Neurology*, vol. 360, no. 2, pp. 257–270, 1995.
- [47] M. Egertová, B. F. Cravatt, and M. R. Elphick, “Comparative analysis of fatty acid amide hydrolase and cb_1 cannabinoid receptor expression in the mouse brain: evidence of a widespread role for fatty acid amide hydrolase in regulation of endocannabinoid signaling,” *Neuroscience*, vol. 119, no. 2, pp. 481–496, 2003.
- [48] S. M. Eggan and D. A. Lewis, “Immunocytochemical distribution of the cannabinoid CB1 receptor in the primate neocortex: a regional and laminar analysis,” *Cerebral Cortex*, vol. 17, no. 1, pp. 175–191, 2007.
- [49] Y. Okamoto, J. Morishita, K. Tsuboi, T. Tonai, and N. Ueda, “Molecular characterization of a phospholipase D generating anandamide and its congeners,” *The Journal of Biological Chemistry*, vol. 279, no. 7, pp. 5298–5305, 2004.
- [50] J. Morishita, Y. Okamoto, K. Tsuboi et al., “Regional distribution and age-dependent expression of *N*-acylphosphatidylethanolamine-hydrolyzing phospholipase D in rat brain,” *Journal of Neurochemistry*, vol. 94, no. 3, pp. 753–762, 2005.
- [51] D. M. Lambert, S. Vandevoorde, K.-O. Jonsson, and C. J. Fowler, “The palmitoylethanolamide family: a new class of anti-inflammatory agents?” *Current Medicinal Chemistry*, vol. 9, no. 6, pp. 663–674, 2002.
- [52] F. Rodríguez de Fonseca, M. Navarro, R. Gómez et al., “An anorexic lipid mediator regulated by feeding,” *Nature*, vol. 414, no. 6860, pp. 209–212, 2001.
- [53] M. Maccarrone, R. Pauselli, M. Di Rienzo, and A. Finazzi-Agrò, “Binding, degradation and apoptotic activity of stearoylethanolamide in rat C6 glioma cells,” *Biochemical Journal*, vol. 366, part 1, pp. 137–144, 2002.
- [54] M. Egertová, G. M. Simon, B. F. Cravatt, and M. R. Elphick, “Localization of *N*-acyl phosphatidylethanolamine phospholipase D (NAPE-PLD) expression in mouse brain: a new perspective on *N*-acylethanolamines as neural signaling molecules,” *Journal of Comparative Neurology*, vol. 506, no. 4, pp. 604–615, 2008.