

Different frequency of epidermal growth factor rs76189946 polymorphism genotype in an Iranian colorectal cancer

Vahid Chaleshi¹, Sanaz Savabkar¹, Hesamodin Dolatmoradi¹, Mahdi Montazer Haghighi², Elmira Khalili Maryan¹, Sara Pasha³, Narges Ebrahimi Vandfaez¹, Ehsan Nazemalhosseini Mojarad³, Hamid Asadzadeh Aghdaei¹, Mohammad Reza Zali³

¹Basic and Molecular Epidemiology of Gastroenterology Disorder Research Center, Shahid Beheshti University of Medical Sciences, Tehran, Iran

²Department of Biology, Science Faculty, Islamic Azad University, East Tehran Branch, Tehran, Iran

³Gastroenterology and Liver Diseases Research Center, Shahid Beheshti University of Medical Sciences, Tehran, Iran

ABSTRACT

Aim: This study aimed to determinant association between rs76189946 polymorphism of EGF gene and risk of colorectal cancer in an Iranian population.

Background: Colorectal cancer (CRC) is the third most prevalent cancer in both genders worldwide. The determination of genetic variation becomes a new way to etiology of colorectal cancer. Epidermal growth factor (EGF) is a mitogen that plays an important role in cell growth and tumourigenesis, this protein acts by binding its receptor, EGFR.

Patients and methods: DNA samples taken from totally 125 CRC patients and healthy controls were amplified by polymerase chain reaction (PCR) for the rs76189946 polymorphism. Genotypes were analyzed using restriction fragment length polymorphism (RFLP). Finally to confirm the RFLP procedure, 20 of the PCR products were sequenced using the ABI PRISM 3130xl Genetic Analyzer and chain termination method (Applied Biosystems, Carlsbad, CA).

Results: Genotype distribution and allele frequency was similar in CRC patients and controls individuals. We expect observe C and G allele in both groups but only was found C allele.

Conclusion: In this study for first time we identified genetic distribution of exonic rs76189946 polymorphism in EGF gene both CRC patients and healthy controls. These results suggest there wasn't association between EGF polymorphism rs76189946 and risk of colorectal cancer in an Iranian population.

Keywords: Colorectal cancer, Single nucleotide polymorphism (SNP), rs76189946, Epidermal growth factor (EGF).

(Please cite as: **Chaleshi V, Savabkar S, Dolatmoradi H, Montazer Haghighi M, Khalili Maryan E, Pasha S, et al. Different frequency of epidermal growth factor rs76189946 polymorphism genotype in an Iranian colorectal cancer. Gastroenterol Hepatol Bed Bench 2013;6(Suppl 1):S32-S38.**)

Introduction

Colorectal cancer (CRC) is one of the most common cancer in the world and the third leading cause of cancer deaths(1). Some studies are shown

that CRC developing in Asia countries (2-4). The etiology of CRC is very complicated and associated with different genetic features(5). Epidermal growth factor (EGF) is a one of the mitogen that belong to EGF super family(6). The human tumor cells release growth factor that may play a role in the pathogenesis of cancer(7). The *EGF* gene is located on chromosome 4q25-27 that

Received: 28 April 2013 Accepted: 8 July 2013

Reprint or Correspondence: Hamid Asadzadeh Aghdaei, MD, PhDs. Basic and Molecular Epidemiology of Gastroenterology Disorder Research Center, Shahid Beheshti University of Medical Sciences, Tehran, Iran

E-mail: hamid.assadzadeh@gmail.com

alternative splicing produces different transcripts. However, twelve transcripts Produced of *EGF* gene that include three coding transcripts and other transcripts no protein products (http://asia.ensembl.org/Homo_sapiens/Gene/Summary) (figure 1). Epidermal growth factor receptor (EGFR) is a Tyrosine kinase receptor and broadly expressed on several cell types, including epithelial and mesenchymal cell (8). Interaction EGF/EGFR lead to dimerization EGFR and activated several signaling pathway (PI3K/AKT, RAS/ERK and JAK/STAT) that cause of proliferation, differentiation and stimulate mitogenesis in epithelial cells (5, 9, 10). Tumor cells synthesize high levels of growth factors regulating for proliferation and survival(11, 12). Single nucleotide polymorphisms (SNPs) are the most common cause of human genetic alternation and may contribute in susceptibility and intensity of disease(13). Relation between *EGF* rs4444903

polymorphism located in 5'UTR and several cancer was investigated including, colorectal cancer (14), prostate cancer (15), melanoma (16), ovarian cancer (17) and breast cancer (18). According to our knowledge several single nucleotide polymorphisms have been identified in *EGF* gene region but a few study reported of *EGF* gene exonic polymorphisms and coloration between type of cancer (19, 20). In this study we investigated coloration between rs76189946 polymorphism that located in exon 23 of *EGF* gene and risk of colorectal cancer for the first time in an Iranian population.

Patients and Methods

Study population

This case-control study was carried out from 2006 to 2011 with patients attending the colorectal cancer Unit in the Taleghani University Hospital

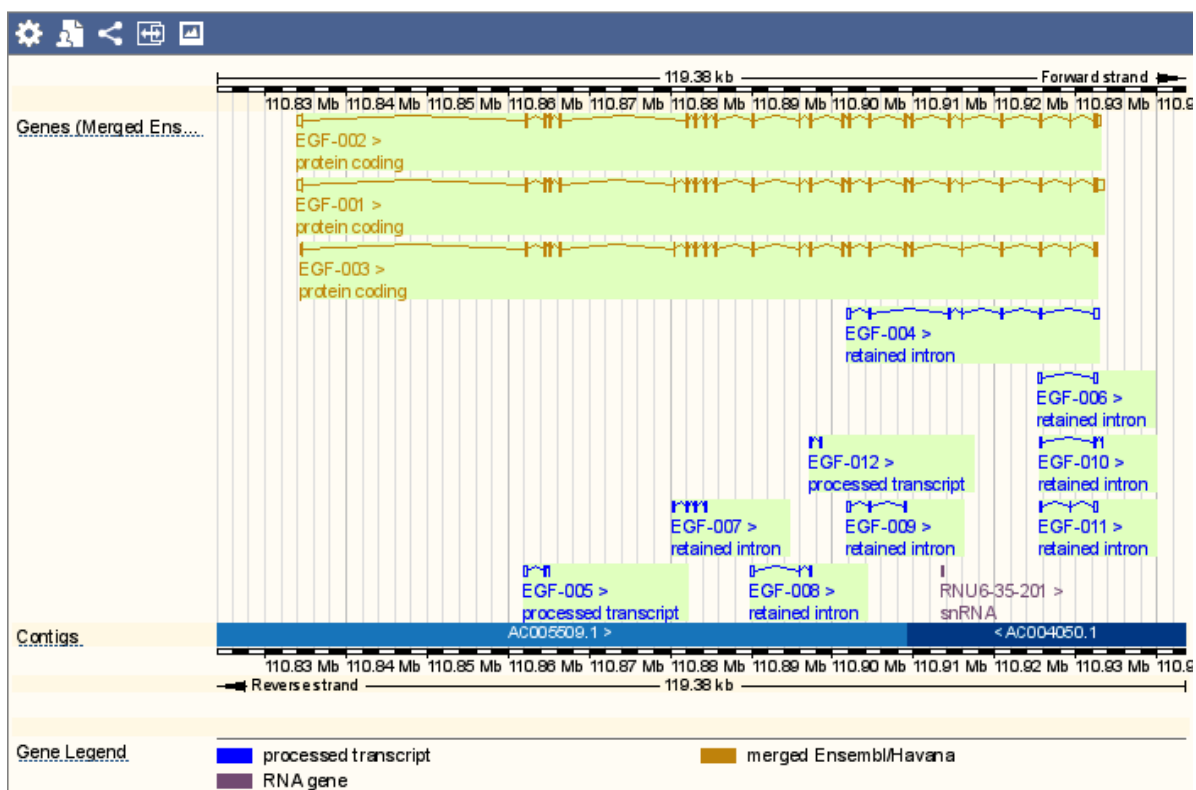


Figure 1. Region detail of *EGF* gene (http://asia.ensembl.org/Homo_sapiens/Gene/Summary?g=ENSG00000138798;r=4:110834040-110933422)

and included the healthy individual to assess the association risk of colorectal cancer and *EGF* rs76189946 polymorphism. After appropriate informed consent a total of 125 subject (including 30 colorectal cancer patients and 95 healthy individuals) were studied. This study was conducted under the approval of the ethics committee of the Gastroenterology and Liver Diseases Research Center, Shahid Beheshti University of Medical Sciences (Tehran, Iran).

DNA extraction

A 5ml venous Blood was collected in EDTA-containing tubes and genomic DNA extracted from mononuclear cells by salting out method (21). The quality of the extracted DNA was then assessed using a NanoDrop spectrophotometer (NanoDrop Technologies, inc., Wilmington, DE, USA).

rs76189966 polymorphism genotyping

Obtained DNA was used to determine the *EGF* rs76189966 polymorphism using the polymerase chain reaction-restriction fragment length polymorphism (PCR-RFLP). To amplify DNA segment, the specific primers were designed (Table 1).

Table 1. Primer sequence and resulting fragment length for growth factor gene polymerase chain reaction (PCR)

Primer direction	Primer sequence	GC %	Resulting fragment bp
1 Forward	5'- GTTTAGGGTCTGTCTTGC -3'	50	434
2 Reverse	5'- TCGTAGAGATTGTGGAACC -3'	47.3	

Amplification, PCR was carried out in a 25 µL mix containing 100 ng genomic DNA, 1xTaq Buffer, 0.5 mM of each deoxyribonucleotide triphosphate (dNTP), 1 mM of each primer, and 1U Taq DNA Polymerase . The PCR cycling conditions were 5 min at 94°C, followed by 32

cycles of 45 s at 94°C, 40 s at 57°C and 45 s at 72°C, with a final elongation step at 72°C for 5 min. For RFLP, the PCR products were digested with HaeIII (New England Biolabs, 5 U at 37°C for 6 h). The digested PCR products were run on a 3.5% agarose gel and stained with green viewer for visualization under UV light.

Sequencing

To confirm the RFLP procedure, 16% of the PCR products were sequenced using the a ABI PRISM 3130xL Genetic analyzer (Applied Biosystems®, Invitrogen Life Technologies, Carlsbad, Ca, USA) and the chain termination method.

Results

Between 2009 and 2011 totally recruit 125 individuals (including 30 sporadic colorectal cancer patients and 95 healthy controls). At the time of diagnoses, mean age of patients were 61.21±13.5 and in Control individuals the mean age were 43.86±1.82 years. The gender distribution for the Males comprised 66.67% of cases and 43.2% of control and female distribution including 33.33% of cases and 56.8% of control. After enzyme digestion, the genotype CC in 287 + 147 bp lengths, genotype CG in 287+245+147+47bp lengths and for genotype GG 245+147+47bp lengths were observed. *EGF* genotype was successfully determined in all patients and controls. In the entire patient and control group population, the C/G and G/G genotypes were not observed. Also, in both groups we found only C allele. After randomly direct sequence of 20 PCR products, all selected sample show that only CC genotype, that this results confirmed the RFLP procedure (Figure 2 and 3).

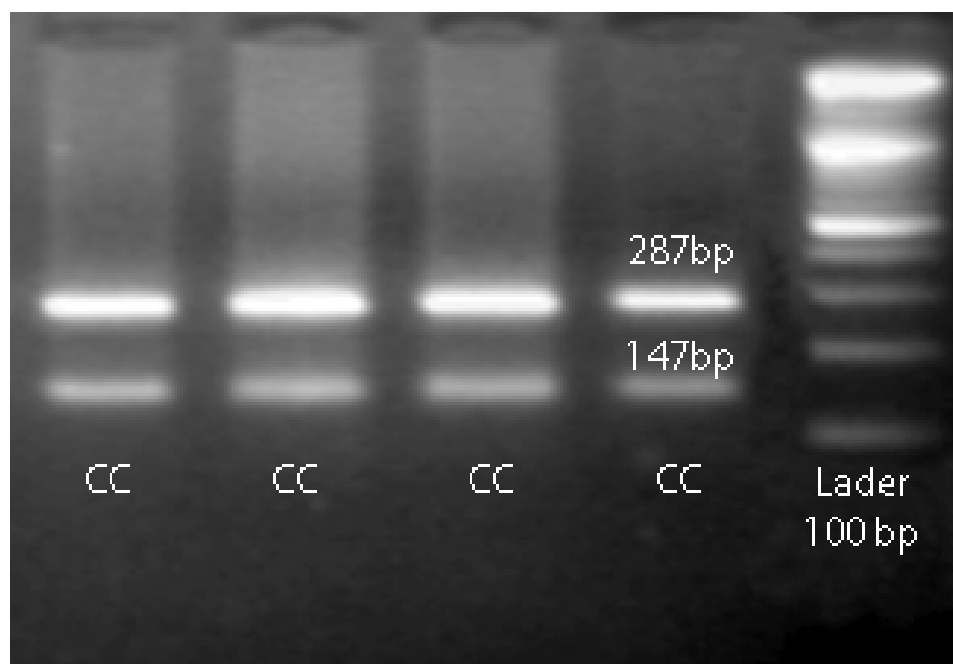


Figure 2. Electrophoresis digested products with HaeIII restricted enzyme on 3.5% agarose gel. The marker (M) that used was 100 base pairs, all sample showed CC genotype.

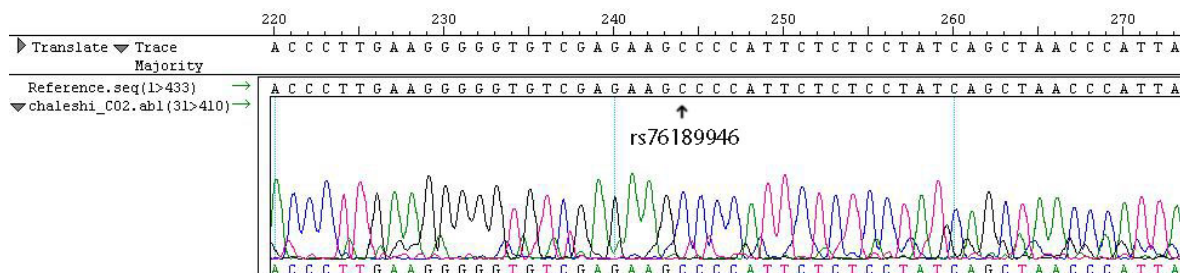


Figure 3. Direct DNA sequencing results for the epidermal growth factor (EGF) rs76189946 C/C genotypes.

Discussion

The EGF provide a prominent signaling pathway in colorectal cancer, as it increased proliferation, differentiation and survival in tumor cells (10). According to a previous study EGFR expression elevated in 60-80% of colorectal tumors. Activation of EGFR oncogene response of interaction of epidermal growth factors to the extracellular domain of the receptor(22). Hence performed to investigate the EGF genetic association study appears required. SNPs are the widespread kind of genetic variation they can function as biological marker and detecting cancer

gene(23). Influence of single nucleotide polymorphism variation regarding the increase or decrease of the risk of colorectal cancer development has been demonstrated by several studies in Iranian population (5, 24, 25). SNPs can absorb in promoter region of the gene that may be change the gene expression(26). Further Studies focus on association between rs4444903 SNP in the promoter region of *EGF* gene and types of cancer. In meta-analysis study by Ying Piao et al suggested that G allele and GG genotype of rs4444903 polymorphism is correlations whit esophageal and colorectal cancer(27). Furthermore, another study on the *EGF* rs4444903 polymorphism by Spindler colleagues support the

Table 2. Characteristics of studies according to single nucleotide polymorphism (SNP) in different region of *EGF* gene.

Author	SNP	region	Correlation	Publication year	population
Shahbazi et al (16)	rs4444903	5'UTR	malignant melanoma	2002	European
Zhen Zhan et al (19)	rs2237051	Exon	gastric cancer	2012	Chinese
	rs3733625	3'UTR	gastric cancer	2012	Chinese
Chaleshi et al (29)	rs2298979	Intron	colorectal cancer	2013	Iranian
Jia Wu et al (20)	rs11569017	Exon	Hepatocellular Carcinoma	2013	Chinese

hypothesis that *EGF* rs4444903 polymorphism in the promoter region could change gene expression that these findings can be concerning the role of EGF factors(28). Although in our previous study, we did not find an association between the rs4444903 variants and the risk of colorectal cancer(14). A few studies showed that the SNPs located in other region of *EGF* gene correlated with some diseases (table 2) (19, 20, 29). The study by Zhen Zhan et al indicate that a change in amino acids from isoleucine to methionine of *EGF* rs2237051 polymorphism correlated with an increased risk of intestinal gastric cancer and rs3733625 in the 3'UTR of *EGF* gene may contribute to the etiology of intestinal gastric cancer in the Chinese population(19). In our previous study for the first time shown the rs2298979 located in intron region of *EGF* gene is correlated with colorectal cancer, although we find no individuals with a G/G genotype despite the fact that the frequency of the G and A alleles was similar in the healthy control and CRC patient groups(14). In this case-control study for the first time we investigated association between rs76189946 and risk of colorectal cancer in an Iranian population. *EGF* gene polymorphism rs76189946 is a missense mutation in amino acid position 1141, which changes Pro to Ala amino acid of the protein. According to NCBI database/submitted dbSNP_ind_id: 30346 in European population the Average Het.+/- std err for rs76189946 is 0.500+/-0. However, our findings show different SNP frequency of genotypes. In present study, we expected see two

allele variations (C, G) of rs76189946 in selected population but our results showed only CC genotype and C allele in all subjects. Some events such as Ethnic heterogeneity, genotype distributions, gene environment interactions, different sample size and natural selection defined as a cause of this difference in world population (14, 30). Recently study has been suggested that negative selection reduced population differentiation in gene regions and in contrast Positive selection leads to increasing population differentiation in gene regions mainly variation at nonsynonymous and 5'-UTR (30).

In conclusion, our study shows that the exonic rs76189946 polymorphism in *EGF* gene has no significant association with CRC patients. More samples in further investigation studies with ethnically diverse populations are required to confirm our findings.

Acknowledgements

We would like to thank all patients who participated in the study which was conducted with the support of Shahid Beheshti University of Medical Sciences.

References

1. Mates IN, Jinga V, Csiki IE, Mates D, Dinu D, Constantin A, et al. Single nucleotide polymorphisms in colorectal cancer: associations with tumor site and TNM stage. *J Gastrointest Liver Dis* 2012;21:45-52.
2. Yee YK, Tan VP, Chan P, Hung IF, Pang R, Wong BC. Epidemiology of colorectal cancer in Asia. *J Gastroenterol Hepatol* 2009;24:1810-16.

3. Jemal A, Bray F, Center MM, Ferlay J, Ward E, Forman D. Global cancer statistics. *Ca Cancer J Clin* 2011;61:69-90.
4. Cheung DY, Kim TH, Kim CW, Kim JI, Cho SH, Park S-H, et al. The anatomical distribution of colorectal cancer in Korea: evaluation of the incidence of proximal and distal lesions and synchronous adenomas. *Intern Med* 2008;47:1649-54.
5. Daraei A, Salehi R, Salehi M, Emami MH, Jonghorbani M, Mohamadhashem F, et al. Effect of rs6983267 polymorphism in the 8q24 region and rs4444903 polymorphism in EGF gene on the risk of sporadic colorectal cancer in Iranian population. *Med Oncol* 2012;29: 1044-49.
6. Amend KL, Elder JT, Tomsho LP, Bonner JD, Johnson TM, Schwartz J, et al. EGF gene polymorphism and the risk of incident primary melanoma. *Cancer Res* 2004;64:2668-72.
7. Normanno N, De Luca A, Bianco C, Strizzi L, Mancino M, Maiello MR, et al. Epidermal growth factor receptor (EGFR) signaling in cancer. *Gene* 2006;366:2-16.
8. Wells A. EGF receptor. *Int J Biochem Cell Biol* 1999;31:637-43.
9. James MR, Hayward NK, Dumenil T, Montgomery GW, Martin NG, Duffy DL. Epidermal growth factor gene (EGF) polymorphism and risk of melanocytic neoplasia. *J Invest Dermatol* 2004;123:760-62.
10. Henson ES, Gibson SB. Surviving cell death through epidermal growth factor (EGF) signal transduction pathways: implications for cancer therapy. *Cell Signal* 2006;18:2089-97.
11. Normanno N, Bianco C, Strizzi L, Mancino M, Maiello M, Luca A, et al. The ErbB receptors and their ligands in cancer: an overview. *Curr Drug Targets* 2005;6:243-57.
12. Ciardiello F, Tortora G. Interactions between the epidermal growth factor receptor and type I protein kinase A: biological significance and therapeutic implications. *Clin Cancer Res* 1998;4:821-8.
13. Wu G-y, Hasenberg T, Magdeburg R, Bönninghoff R, Sturm JW, Keese M. Association Between EGF, TGF- β 1, VEGF Gene Polymorphism and Colorectal Cancer. *World J Surg* 2008;33:124-29.
14. Chaleshi V, Montazer Haghighi M, Javadi GR, Fatemi SR, Vahedi M, Zali MR. The effect of 5' untranslated region polymorphism in EGF gene, rs4444903, on colorectal cancer. *Gastroenterol Hepatol Bed Bench* 2013;6:129-35.
15. Jacobs EJ, Hsing AW, Bain EB, Stevens VL, Wang Y, Chen J, et al. Polymorphisms in angiogenesis-related genes and prostate cancer. *Cancer Epidemiol Biomarkers Prev* 2008;17:972-77.
16. Shahbazi M, Pravica V, Nasreen N, Fakhoury H, Fryer AA, Strange RC, et al. Association between functional polymorphism in EGF +61A/G gene and malignant melanoma. *Lancet* 2002;359:397-401.
17. Araujo AP, Ribeiro R, Pereira D, Pinto D, Sousa B, Catarino R, et al. Ovarian cancer and genetic susceptibility: association of A61G polymorphism in the EGF gene. *Exp Biol Med (Maywood)* 2009;234:241-45.
18. Araújo AP, Ribeiro R, Pinto D, Pereira D, Sousa B, Mauricio J, et al. Epidermal growth factor genetic variation, breast cancer risk, and waiting time to onset of disease. *DNA Cell Biol* 2009;28:265-69.
19. Zhan Z, Chen Y, Wu J, Zhang J, Tong S, Zhang C, et al. Functional epidermal growth factor gene polymorphisms and risk of gastric cancer. *Oncol Lett* 2013;5:631-36.
20. Wu J, Zhang W, Xu A, Zhang L, Yan T, Li Z, et al. Association of epidermal growth factor and epidermal growth factor receptor polymorphisms with the risk of hepatitis B virus-related hepatocellular carcinoma in the population of north china. *Genet Test Mol Biomarkers* 2013;17:595-600.
21. Miller S, Dykes D, Polesky H. A simple salting out procedure for extracting DNA from human nucleated cells. *Nucleic Acids Res* 1988;16:1215.
22. Berg M, Soreide K. EGFR and downstream genetic alterations in KRAS/BRAF and PI3K/AKT pathways in colorectal cancer—implications for targeted therapy. *Discov Med* 2012;14:207-14.
23. Altshuler D, Pollara VJ, Cowles CR, Van Etten WJ, Baldwin J, Linton L, et al. An SNP map of the human genome generated by reduced representation shotgun sequencing. *Nature* 2000;40:513-16.
24. Khorshidi F, Mohebbi SR, Haghighi MM, Taleghani MY, Azimzadeh P, Golmohammadi M, et al. Polymorphism- 765G> C in Cyclooxygenase-2 and Risk of Colorectal Cancer. *Lab Medicine* 2013;44:e14-e8.
25. Haghighi MM, Taleghani MY, Mohebbi SR, Vahedi M, Fatemi SR, Zali N, et al. Impact of EXO1 polymorphism in susceptibility to colorectal cancer. *Genet Test Mol Biomarkers* 2010;14:649-52.
26. Shastry BS. SNPs: impact on gene function and phenotype. *Methods Mol Biol* 2009; 578:3-22.

27. iao Y, Liu Z, Ding Z, Xu L, Guo F, Sun Q, et al. EGF +61A>G polymorphism and gastrointestinal cancer risk: a HuGE review and meta-analysis. *Gene*. 2013;519:26-33.

28. Spindler K-LG, Nielsen JN, Ornskov D, Brandslund I, Jakobsen A. Epidermal growth factor (EGF) A61G polymorphism and EGF gene expression in normal colon tissue from patients with colorectal cancer. *Acta Oncol* 2007;46:1113-17.

29. Chaleshi V, Haghghi MM, Savabkar S, Zali N, Vahedi M, Khanyaghma M, et al. Correlation between the EGF gene intronic polymorphism, rs2298979, and colorectal cancer. *Oncol Lett* 2013; 6: 1079-83.

30. Barreiro LB, Laval G, Quach H, Patin E, Quintana-Murci L. Natural selection has driven population differentiation in modern humans. *Nat Genet* 2008;40:340-45.