



# Predicting surgical factors for unplanned overnight admission in ambulatory arthroscopic surgery of the knee: a prospective cohort in one hundred and eighty four patients

Nadhaporn Saengpetch<sup>1</sup> · Rattapoom Watcharopas<sup>1</sup> · Chusak Kujkunasathian<sup>1</sup> · Chalermchai Limitloahaphan<sup>1</sup> · Chatchawan Lertbutsayanukul<sup>1</sup> · Chaianun Vijittrakarnrung<sup>1</sup> · Paphon Sa-ngasoongsong<sup>1</sup> · Vanlapa Arnuntasupakul<sup>2</sup> · Lisa Sangkum<sup>2</sup>

Received: 16 February 2022 / Accepted: 7 May 2022 / Published online: 17 May 2022  
© The Author(s) 2022

## Abstract

**Purpose** Unplanned overnight admission (UOA) is an important indicator for quality of care with ambulatory knee arthroscopic surgery (AKAS). However, few studies have explored the factors related to the UOA and how to predict UOA after AKAS. This study aimed to evaluate the effectiveness of a standardized peri-operative protocol for the AKAS and identify whether a correlation exists between the peri-operative surgical factors and UOA in the patients undergoing AKAS. We hypothesized that more surgical invasiveness and prolong tourniquet time increase the risk of UOA after AKAS.

**Method** A prospective cohort study was conducted between October 2017 and March 2021. All 184 patients operated on standard AKAS protocol. The UOA is defined as overnight hospitalization of a patient undergoing AKAS. Demographic and peri-operative data were recorded, and the procedure was categorized based on the surgical invasiveness based on less invasive (intra-articular soft tissue surgery) ( $n = 65$ ) and more complex surgery (involving extra-articular soft tissue surgery or ligamentous reconstruction) ( $n = 119$ ). The clinical risk factors for UOA were identified and analyzed with multivariate analysis.

**Results** The incidence of UOA in the more complex group ( $n = 7$ , 14.3%) was significantly higher than in the less invasive group ( $n = 3$ , 4.6%) ( $p = 0.049$ ). The peri-operative factors significantly associated with UOA were age, more complex surgery, and longer tourniquet time ( $p < 0.10$  all). However, the multivariate analysis revealed that longer tourniquet time was the only significant predictor for UOA (OR = 1.045, 95% CI = 1.022–1.067,  $p = 0.0001$ ). The optimal cut-off points of tourniquet time for predicting UOA with the highest Youden index in the less invasive and more complex groups were 56 minutes and 107 minutes, respectively.

**Conclusion** The UOA after AKAS is more common in more complex surgery compared to less invasive surgery. This study showed that unplanned admission significantly associated with many factors—as patient factors, surgical invasiveness, and tourniquet time. However, tourniquet time is the only independent predictor for UOA. Therefore, strict perioperative management protocol must be applied in AKAS, and all patients having these risk factors should be prepared for UOA.

**Keywords** Unplanned overnight admission · Ambulatory knee arthroscopic surgery · Clinical risk factor · Surgical invasiveness · Tourniquet time

## Abbreviations

ACB Adductor canal block  
ACL Anterior cruciate ligament  
AKAS Ambulatory knee arthroscopic surgery

BMI Body mass index  
CI Confidence interval  
IKDC International Knee Documentation Committee  
NPV Negative predictive value  
NRS Numeric rating scale  
OR Odds ratio  
PONV Post-operative nausea or vomiting  
PPV Positive predictive value  
ROC Receiver operating characteristic  
UOA Unplanned overnight admission

Level of evidence: II, Prospective cohort study

✉ Nadhaporn Saengpetch  
doctorobb@gmail.com

Extended author information available on the last page of the article

## Introduction

Ambulatory knee arthroscopic surgery (AKAS) is one of the most common minimally invasive orthopaedic surgical procedures and increasingly performed overtime [1] due to the numerous advantages (e.g., the treatment cost with unchanged or improved clinical outcomes) compared to inpatient setting [2, 3]. Nevertheless, previous studies showed that some patients who underwent AKAS still do not experience the expected post-operative recovery and require overnight stay with an incidence of the unplanned overnight admission (UOA) ranged from 0.0004 to 20% [4–6], and the most common cause for UOA was severe post-operative pain [6], while previous studies mostly focused on the factors associated with readmission after AKAS especially in an anterior cruciate ligament (ACL) reconstruction [7–9]. To the best of our knowledge, only few studies explored the factors related to UOA and how to predict UOA after AKAS [10, 11]. Moreover, there were some variations on the peri-operative protocol that might affect the UOA too such as the anaesthetic technique [5], the use of tourniquet and setting pressure [12, 13], and the standardization of operative procedures [4]. Therefore, the aim of this study was to evaluate the effectiveness of a standard peri-operative protocol on UOA and identify the correlation between the peri-operative surgical factors and UOA in patients undergoing AKAS. We hypothesized that some peri-operative surgical factors such as surgical invasiveness and prolong tourniquet time increase risk of UOA after AKAS.

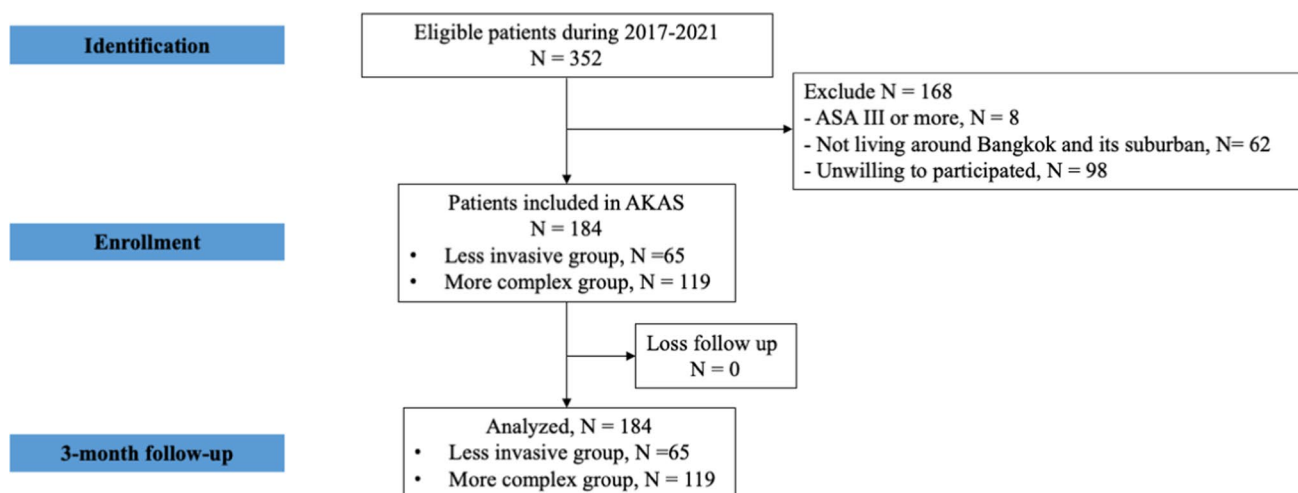
## Patients and methods

### Study design, inclusion, and exclusion criteria

This study was designed as a single-centered prospective cohort study in a medical university hospital and was approved by our institutional review board (protocol number: ID 09–60–07). Informed consent was obtained from all patients who participated in the study, before the surgery was scheduled, in accordance with the Declaration of Helsinki. The manuscript was prepared according to the Strengthening the Reporting of Observational Studies in Epidemiology (STROBE) guideline [14].

The AKAS was developed by a multidisciplinary team comprising sports medicine surgeons, regional anesthesiologists, nurses, and clinical administrators. All patients and their caregivers received pre-operative education and counseling for perioperative instructions and post-operative rehabilitation using instructional video and brochures. The inclusion criteria were the patients who (1) were aged between 18 and 60 years, (2) could follow peri-operative protocol, (3) had the American Society of Anesthesiologists (ASA) physical status grade 1 or 2, (4) had no bleeding disorder, (5) were living around Bangkok or its suburbs, and (6) were willing to participate in this study and give informed consent. The exclusion criteria focused on patients who (1) were unable to communicate due to a physical condition (e.g., hearing loss) or underlying disease (e.g., dementia), (2) had a pre-operative diagnosis of radicular pain or neuropathic pain on the operated knee, and (3) refused to participate.

Therefore, a total of 184 patients who underwent AKAS at Ramathibodi Hospital between October 2017 and March 2021 were enrolled in this study (Fig. 1). Demographic data



**Fig. 1** Flow diagram of this study. AKAS, ambulatory knee arthroscopic surgery

are shown in Table 1. Among these patients, the average patient age was 33.4 years (range 15–62 years), and 143 patients (77.7%) were male. The average BMI and pre-operative IKDC score were 25.1 kg/m<sup>2</sup> (range 16.6–34.6 kg/m<sup>2</sup>) and 52.1 (range 24–97), respectively. The operations were categorized as either less invasive (soft tissue-based surgery) (65 cases, 35.3%) or more complex surgery (ligamentous and meniscal-based surgery) (119 cases, 64.7%). The less invasive group comprised meniscus-alone surgery (51 cases) and other soft tissue surgeries (14 cases), which included arthroscopic debridement, loose bodies removal (8 cases), plica resection (2 cases), excision pigmented villonodular synovitis (2 cases), and implant removal (2 cases). The more complex group comprised ACL reconstruction alone (28 cases), ACL reconstruction with meniscal surgery (90 cases), and medial patellofemoral ligament reconstruction with lateral retinacular release (1 case). The median tourniquet time was 93 min (range 20–163 min). After AKAS, 20 cases (10.9%) were admitted unexpectedly due to NRS  $\geq$  4 (17 cases), PONV (1 case), NRS  $\geq$  4 and severe dizziness (1

case), and need of re-operation due to unexpected retained and broken metal guide (1 case). There were no readmissions during the three month post-operative follow-up period.

### Standard peri-operative protocol

All arthroscopic surgery was randomly performed by six experienced surgeons using the same arthroscopic surgical approach under pneumatic tourniquet 350 mmHg of pressure. All anaesthesia was administered under the care of two anesthesiologists (VA and LS) using the same protocol as combined ultrasound-guided adductor canal block (ACB) and general anesthesia. All patients were first sedated with 0.03 mg/kg of midazolam and 0.5–1.0 mcg/kg of fentanyl before the anaesthetic procedure. The local anaesthetic for ACB was 15–20 mL of 0.5% bupivacaine. Standardized general anaesthesia was initiated with 1–2 mg/kg of propofol and 50–100 mcg of fentanyl intravenously with or without muscle relaxant. Then, a laryngeal mask airway or endotracheal tube was inserted, and anesthesia was maintained with 0.8–1.0 MAC of sevoflurane or desflurane using an oxygen/air mixture. During operation, additional intravenous 0.1–0.2 mg/kg of morphine (maximum 10 mg), 5–10 mg dexamethasone, 30 mg ketorolac or 40 mg parecoxib, and 4–8 mg of ondansetron were given.

**Table 1** Demographic data of 184 patients who underwent ambulatory arthroscopic knee surgery

Demographic data	Total (n = 184)
Age, year <sup>●</sup>	33.4 $\pm$ 11.5
Male:female <sup>◆</sup>	143:41
BMI, kg/m <sup>2</sup> <sup>●</sup>	25.1 $\pm$ 3.5
ASA classification grade 1:2	123:61
Pre-operative IKDC score <sup>●</sup>	52.1 $\pm$ 14.0
Operation <sup>□</sup>	
Meniscus Surgery	51 (27.7)
ACLR alone	29 (15.8)
ACLR with meniscus surgery	90 (48.9)
Other	14 (7.6)
Operation category	
Less invasive:more complex	65:119
Tourniquet time, minute <sup>△</sup>	93 (20–163)
Unplanned admission <sup>□</sup>	20 (10.9)
Intolerated pain with NRS $\geq$ 4	18 <sup>a</sup>
Significant PONV	1
Severe dizziness and unable to walk	1
Reoperation	1

BMI body mass index, ASA American Society of Anesthesiologist, IKDC International Knee Documentation Committee, ACLR anterior cruciate ligament reconstruction, NRS numeric rating scale, PONV postoperative nausea or vomiting

<sup>●</sup>Value presented as mean  $\pm$  standard deviation

<sup>◆</sup>Value presented as ratio between cases having that condition

<sup>△</sup>Value presented as median (range)

<sup>□</sup>Value presented as number of cases (percentage)

<sup>a</sup>One case admitted from concomitant intolerated pain and severe dizziness

### Criteria for discharge

After the completed operation, all patients were subsequently transferred to the post-anaesthetic care unit (PACU) for at least one hour until showing a modified Aldrete score of  $\geq$  9 [15] and then transferred to a day surgery unit. Additional analgesics (2–4 mg intravenous morphine and 0.5–1.0 g oral acetaminophen) and antiemetics (intravenous 2–4 mg ondansetron or 5–10 mg metoclopramide) were given if the patients had a 10-point numeric rating scale (NRS) of  $\geq$  4 or post-operative nausea or vomiting (PONV), respectively. All patients were assessed by one of the authors (RW) at six hours after surgery for appropriate discharge. The discharge criteria were as follows: (1) NRS  $\leq$  3, (2) no PONV, (3) able to independently walk with crutches, (4) no urinary retention, (5) no abnormal surgical wound bleeding, and (6) no re-operation required for any cause. The patients who did not meet the discharge criteria were admitted into the orthopaedic ward for further treatment. All patients were followed at 24 and 48 hours post-operatively by telephone and at two weeks, six weeks, and three months after surgery at the sports medicine clinic or via a telephone interview for clinical evaluation.

### Data collection and outcome measurement

Demographic data included the following: age, gender, body mass index (BMI), ASA physical status, diagnosis,

and pre-operative International Knee Documentation Committee (IKDC) score. The peri-operative and post-operative data such as operation, surgical invasiveness category and tourniquet time, discharge status, incidence of UOA, and cause of UOA were recorded. The surgical category was defined as either a less invasive and more complex surgical procedure, based on the surgical invasiveness of outpatient knee surgery, following the prior study by Williams et al. [5, 16] (Table 2). The cause of UOA was defined as any patient problems that did not meet the discharge criteria.

### Statistical analysis

STATA SE version 16.0 (StataCorp, College Station, TX, USA) was used to analyze data. Categorical data were analyzed by the Fisher exact test or chi-square test, and continuous variables were analyzed using unpaired *t*-test or Wilcoxon rank-sum test for data as appropriate. Univariate logistic regression analysis was used to determine the predictors associated with UOA. Multivariate logistic regression analysis with stepwise was performed and included variables with a *p*-value less than 0.10 from the univariate analysis. Significant difference was defined as *p*-value < 0.05. The Spearman coefficient and scatter plot were used to identify the correlation between the significant variable and the most common cause of unplanned admission. The receiver operating characteristic (ROC) curve with the Youden index was used to determine the cut-off value for the significant variable. The performance test of the prediction model was calculated to determine the sensitivity, specificity, and positive and negative predictive value in each model.

## Results

### Comparison of perioperative surgical factors between less invasive and more complex surgery

Table 3 shows the data comparison between the patients who had been treated with less invasive surgery (*n* = 65) and more complex surgery (*n* = 119). The incidence of UOA in the more complex group (17 cases, 14.3%) was significantly higher than among those in the less invasive group (3 cases, 4.6%) (*p* = 0.049). The more complex group also showed a significantly higher age and male proportion, lower BMI and pre-operative IKDC,

**Table 3** Data comparison between less invasive and more complex surgery

Demographic data	Less invasive group ( <i>n</i> = 65)	More complex group ( <i>n</i> = 119)	<i>p</i> -value
Age, year <sup>⊙</sup>	39.5 ± 13.7	30.1 ± 8.4	< 0.001*
Male:female <sup>◆</sup>	34:28	106:13	< 0.001*
BMI, kg/m <sup>2</sup> <sup>⊙</sup>	25.5 ± 3.8	24.9 ± 3.3	0.228
ASA classification grade 1:2	30:32	91:28	0.0003*
Preoperative IKDC score <sup>⊙</sup>	53.4 ± 15.5	51.4 ± 13.1	0.346
Tourniquet time, minute <sup>⊙</sup>	47 (20–130)	103 (20–163)	< 0.001*
Unplanned admission <sup>□</sup>	3 (4.6)	17 (14.3)	0.049*

*BMI* body mass index, *ASA* American Society of Anesthesiologist, *IKDC* International Knee Documentation Committee

<sup>⊙</sup>Value presented as mean ± standard deviation or median (range) and compared with unpaired *t*-test or Mann–Whitney *U* test

<sup>◆</sup>Value presented as ratio between cases having that condition and compared with Fisher exact test or chi-square test

<sup>□</sup>Value presented as number of cases (percentage) and compared with Fisher exact test or chi-square test

\*Significant difference with *p*-value < 0.05

**Table 2** Categorization of the ambulatory arthroscopic knee surgery based on the surgical invasiveness

	Categories of surgical invasiveness	
	Less invasive	More complex
Example of cases	Knee arthroscopy with: Debridement Synovectomy Loose bodies removal Plica resection Meniscal surgery Meniscal repair Removal of superficial hardware	Knee arthroscopy with: ACL reconstruction and/or other ligament reconstruction (PCL, MCL, LCL) Posterior oblique ligament or posterolateral corner reconstruction Meniscal reconstruction Extensive meniscal repair requiring extracapsular suturing Proximal/distal patellar realignment Removal of deeply imbedded hardware

*ACL* anterior cruciate ligament, *PCL* posterior cruciate ligament, *MCL* medial collateral ligament, *LCL* lateral collateral ligament

and longer tourniquet time, compared to the less invasive group ( $p < 0.01$  all).

### Risk factors for unplanned admission and correlation with the most common cause of admission

Table 4 demonstrates the univariate and multivariate logistic regression analysis for UOA. Based on univariate analysis, the peri-operative factors significantly associated with UOA were age, more complex surgery, and tourniquet time ( $p < 0.10$  all). However, multivariate regression analysis revealed that tourniquet time was the only significant predictor for UOA (odds ratio (OR) = 1.045, 95% confidence interval (CI) = 1.022 to 1.067,  $p = 0.0001$ ). The area under the curve of this prediction model was 0.798 (95% CI = 0.733 to 0.854). The Spearman coefficient and scatter plot showed fair correlation [17] between NRS score at 6 h and tourniquet time ( $r_s = 0.364$ ,  $p < 0.0001$ ) (Fig. 1).

### ROC analysis

The results of using ROC analysis to predict the UOA using tourniquet time are detailed in Table 5. The optimal cut-off point of tourniquet time from this prospective cohort study ( $n = 184$ ) with the highest Youden index was 103 min (Youden index = 0.476, sensitivity 75.0%, specificity 72.6%, PPV 25.0%, and NPV 96.0%). Regarding the surgical invasiveness, for those in the less invasive group ( $n = 65$ ), the optimal cut-off point for the tourniquet time with the highest Youden index was 56 minutes (Youden index = 0.726, sensitivity 100.0%, specificity 72.6%, PPV 15.0%, and NPV 100.0%). For the more complex surgery ( $n = 119$ ), the optimal cut-off point for the tourniquet time with the highest Youden index was 107 minutes (Youden index = 0.422, sensitivity 76.5%, specificity 65.7%, PPV 27.1%, and NPV 94.4%).

### Discussion

Unplanned overnight admission (UOA) has become one of the common peri-operative complications after ambulatory knee arthroscopic surgery (AKAS) and only few studies

**Table 4** Multivariate logistic regression, unplanned admissions ( $n = 184$ ) for ambulatory arthroscopic knee surgery

Variables	UVA			MVA		
	OR	(95% CI)	<i>p</i> -value	OR	(95% CI)	<i>p</i> -value
Age	0.947	0.900 to 0.996	0.033 <sup>P</sup>			
Female gender	0.585	0.163 to 2.104	0.412			
BMI	1.020	0.893 to 1.166	0.768			
ASA grade 2	0.643	0.222 to 1.860	0.415			
Pre-operative IKDC score	0.986	0.952 to 1.021	0.422			
More complex surgery category	3.444	0.970 to 12.232	0.056 <sup>P</sup>			
Tourniquet time	1.045	1.022 to 1.067	0.0001 <sup>P</sup>	1.045	1.022 to 1.067	0.0001*

<sup>P</sup>Predictors used for multivariate regression analysis with  $p$ -value  $< 0.10$  in univariate analysis

\*Significant difference with  $p$ -value  $< 0.05$

**Table 5** Optimal tourniquet time cut-off points for predicting unplanned overnight admission in whole cohort ( $n = 184$ ), less invasive ( $n = 65$ ), and more complex ( $n = 119$ ) groups

Group	TT cut-off points (minute)	Sensitivity*	Specificity*	PPV*	NPV*
Whole cohort ( $n = 184$ )	97 <sup>a</sup>	80.0 (56.3–94.3)	65.9 (58.1–73.1)	22.2 (13.3–33.6)	96.4 (91.1–99.0)
	103 <sup>b</sup>	75.0 (50.9–91.3)	72.6 (65.1–79.2)	25.0 (14.7–37.9)	96.0 (90.8–98.7)
Less invasive group ( $n = 65$ )	56 <sup>a,b</sup>	100.0 (29.2–100.0)	72.6 (59.8–83.1)	15.0 (3.2–37.9)	100.0 (92.1–100.0)
More complex group ( $n = 119$ )	103 <sup>a</sup>	82.4 (56.6–96.2)	57.8 (47.7–67.6)	24.6 (14.1–37.8)	95.2 (86.5–99.0)
	107 <sup>b</sup>	76.5 (50.1–93.2)	65.7 (55.6–74.8)	27.1 (15.3–41.8)	94.4 (86.2–98.4)

TT tourniquet time, PPV positive predictive value, NPV negative predictive value

\*Data presented as value in percentage (95% confidence interval)

<sup>a</sup>The cut-off point of tourniquet time yielding at least 80% sensitivity

<sup>b</sup>The cut-off point of tourniquet time with the highest Youden index

reported the correlation between peri-operative surgical factors and UOA. This study aimed to evaluate the effectiveness of standard peri-operative AKAS protocol on UOA and identify the risk factors of UOA. Overall, the results from this study showed that the incidence of UOA from AKAS was as high as 10.9% (4.6% in less invasive group and 14.3% in more complex group) with the incidence of readmission at 0% and post-operative pain as the most common UOA cause (Table 2). Moreover, we also found that, with multivariate logistic regression analysis, tourniquet time was a significant independent predictor for the UOA in this study (Table 4).

However, certain limitations in the present study should be acknowledged. First, although this study was designed as a prospective observational study with a standardization of peri-operative protocol, our sample size was relatively small due to the COVID-19 situation. However, our results could demonstrate the significant effect of surgical invasiveness in patients undergoing AKAS and potentially reveal the statistically significant independent predictor of UOA by multivariate analysis (Tables 3 and 4). Second, the incidence of UOA and the findings in this study might be affected by the study inclusion criteria (as ASA status grades 1–2 and the absence of a bleeding disorder) and some uncommon potential factors for UOA (e.g., chronic disease, morbid obesity, and smoking status [10, 11, 18]). Lastly, our results may not be directly applicable in the other conditions related to the use of tourniquet, such as arthroscopic knee surgery without tourniquet inflation [13] and the setting of tourniquet pressure based on limb occlusion pressure (this study used only a 350-mmHg tourniquet pressure setting protocol) [12]. Therefore, future studies should employ a larger sample size, and multicentered prospective studies with different surgical protocol are still required to explore the other predicting factors and benefits of the tourniquet setting protocol.

In terms of the effectiveness of standard peri-operative AKAS protocol, our findings showed that the incidence of UOA are comparable to the results from previous studies [4, 5]. In addition, the present study also demonstrated a significant difference in the characteristics of patients who underwent the AKAS based on the invasiveness of the operations (Table 3), which was also comparable with the results in the previous study by Saltzman et al. [19] where there was significant difference in the demographic data (e.g., age, gender, and BMI) between the patients who received different arthroscopic surgery. Moreover, our results also showed that the patients' characteristics in more complex group were significantly higher in age and proportion of male gender, higher in ASA physical status, longer in tourniquet time, and greater in UOA, compared to those in the less invasive group. These results are comparable with the previous study by Williams et al. [5] as the UOA in the more complex surgery group was significantly higher than for those who underwent less invasive surgery.

Regarding the multivariate analysis, our results showed that tourniquet time was a significant independent predictor for the UOA (Table 4). Prolonged tourniquet time was associated with a 1.045-fold greater risk of UOA ( $p=0.0001$ ). The prediction model also demonstrated that the cut-off points for tourniquet time in the whole cohort, less invasive group, and more complex group (103 min, 56 min, and 107 min, respectively) could predict the UOA with a sensitivity of 75.0%, 100.0%, and 76.5%, respectively. These findings imply that longer tourniquet time increases the risk of severe post-operative pain and the risk of UOA. Such implications align with results in previous studies by Lutz et al. [20] and Boddapati et al. [10] that prolonged tourniquet time of more than 50 minutes was one risk factor of severe post-operative pain (NRS  $\geq 7$ ) [20] and that procedures longer than 90 minutes are a risk factor for UOA [10]. Moreover, the present study revealed that the cut-off point for the AKAS procedure could vary between less invasive and more complex surgery, and the cut-off time for these different procedures should be based on the level of surgical invasiveness. Therefore, to achieve the optimal outcome, we recommended that strict peri-operative management protocol during AKAS must be applied in all patients. Also, the patients, who have those risk factors and are expected to have prolonged tourniquet time, should be informed for the risk of UOA, closely monitored for the post-operative complication, and prepared for overnight admission.

## Conclusion

This study showed that the incidence of UOA after AKAS could be as high as 10.9% and that the most common cause of UOA was pain-related. Moreover, many factors such as patient factors, surgical invasiveness, and tourniquet time were significantly associated with unplanned admissions. However, tourniquet time was the only independent predictor for UOA with the cut-off point of 107 minutes.

**Acknowledgements** The authors wish to thank the Department of Orthopedics, Faculty of Medicine Ramathibodi Hospital, Mahidol University, for the kind assistance and permission to carry out this study.

**Author contribution** Nadhaporn Saengpetch and Rattapoom Watcharopas are the main researchers who designed and performed the study and prepared the final manuscript.

Chatchawan Lertbutsayanukul and Chaiyanun Vijittrakarnrung are orthopedic sports medicine surgeons who assisted in data collection.

Vanlapa Arnuntasapakul and Lisa Sangkum are experienced anesthesiologists who performed all anesthetic data collection.

Paphon Sa-ngasoongsong is a senior orthopedic surgeon who performed in statistical analysis.

Chusak Kujkunasathian and Chalermchai Limitloahaphan are senior orthopedic consultants who wrote the first draft of the manuscript. All authors read and approved the final manuscript.

**Availability of data and materials** The datasets generated and/or analyzed during the current study are available from the corresponding author upon any reasonable request.

## Declarations

**Ethics approval** This study was approved by the Ethical Clearance Committee on Human Rights Related to Research Involving Human Subjects, Faculty of Medicine Ramathibodi Hospital, Mahidol University (protocol number: ID 09–60–07). All patients were appropriately informed and gave consent before participating in this study and certify that the study was performed in accordance with the ethical standards as laid down in the 1964 Declaration of Helsinki.

**Consent to participate** Informed consent was obtained from all individual participants included in the study.

**Consent for publication** Not applicable.

**Conflict of interest** The authors declare no competing interests.


**Open Access** This article is licensed under a Creative Commons Attribution 4.0 International License, which permits use, sharing, adaptation, distribution and reproduction in any medium or format, as long as you give appropriate credit to the original author(s) and the source, provide a link to the Creative Commons licence, and indicate if changes were made. The images or other third party material in this article are included in the article's Creative Commons licence, unless indicated otherwise in a credit line to the material. If material is not included in the article's Creative Commons licence and your intended use is not permitted by statutory regulation or exceeds the permitted use, you will need to obtain permission directly from the copyright holder. To view a copy of this licence, visit <http://creativecommons.org/licenses/by/4.0/>.

## References

- Kim S, Bosque J, Meehan JP, Jamali A, Marder R (2011) Increase in outpatient knee arthroscopy in the United States: a comparison of National Surveys of Ambulatory Surgery, 1996 and 2006. *J Bone Joint Surg Am* 93(11):994–1000
- Robinson JC, Brown TT, Whaley C, Bozic KJ (2015) Consumer choice between hospital-based and freestanding facilities for arthroscopy: impact on prices, spending, and surgical complications. *J Bone Joint Surg Am* 97(18):1473–1481
- Ferrari D, Lopes TJA, Franca PFA, Azevedo FM, Pappas E (2017) Outpatient versus inpatient anterior cruciate ligament reconstruction: a systematic review with meta-analysis. *Knee* 24(2):197–206
- Khan T, Jackson WF, Beard DJ, Marfin A, Ahmad M, Spacie R (2012) The use of standard operating procedures in day case anterior cruciate ligament reconstruction. *Knee* 19(4):464–468
- Williams BA, Kentor ML, Vogt MT, Williams JP, Chelly JE, Valalik S (2003) Femoral-sciatic nerve blocks for complex outpatient knee surgery are associated with less postoperative pain before same-day discharge: a review of 1,200 consecutive cases from the period 1996–1999. *Anesthesiology* 98(5):1206–1213
- Goldfarb CA, Bansal A, Brophy RH (2017) Ambulatory surgical centers: a review of complications and adverse events. *J Am Acad Orthop Surg* 25(1):12–22
- Bokshan SL, DeFroda SF, Owens BD (2017) Risk factors for hospital admission after anterior cruciate ligament reconstruction. *Arthroscopy* 33(7):1405–1411
- Cooper JD, Lorenzana DJ, Heckmann N, McKnight B, Mostofi A, Gamradt SC (2019) The effect of obesity on operative times and 30-day readmissions after anterior cruciate ligament reconstruction. *Arthroscopy* 35(1):121–129
- Lu Y, Lavoie-Gagne O, Khazi Z, Patel BH, Mascarenhas R, Forsythe B (2020) Inpatient admission following anterior cruciate ligament reconstruction is associated with higher postoperative complications. *Knee Surg Sports Traumatol Arthrosc* 28(8):2486–2493
- Boddapati V, Fu MC, Nwachukwu BU, Camp CL, Spiker AM, Williams RJ (2020) Procedure length is independently associated with overnight hospital stay and 30-day readmission following anterior cruciate ligament reconstruction. *Knee Surg Sports Traumatol Arthrosc* 28(2):432–438
- Min CJ, Partan MJ, Koutsogiannis P, Iturriaga CR, Katsigiorgis G, Cohn RM (2020) Risk factors for hospital admission in patients undergoing outpatient anterior cruciate ligament reconstruction: a national database study. *J Orthop* 22:436–441
- Masri BA, Eisen A, Duncan CP, McEwen JA (2020) Tourniquet-induced nerve compression injuries are caused by high pressure levels and gradients - a review of the evidence to guide safe surgical, pre-hospital and blood flow restriction usage. *BMC Biomed Eng* 2:7
- Reda W, ElGuindy AMF, Zahry G, Faggal MS, Karim MA (2016) Anterior cruciate ligament reconstruction; is a tourniquet necessary? A randomized controlled trial. *Knee Surg Sports Traumatol Arthrosc* 24(9):2948–2952
- von Elm E, Altman DG, Egger M, Pocock SJ, Gøtzsche PC, Vandenbroucke JP (2007) The Strengthening of Reporting of Observational Studies in Epidemiology (STROBE) statement guidelines for reporting observational studies. *Ann Intern Med* 147:573–577
- Aldrete JA (1995) The post-anesthesia recovery score revisited. *J Clin Anesth* 7(1):89–91
- Williams BA, Kentor ML, Williams JP, Vogt MT, DaPos SV, Harner CD (2002) PACU bypass after outpatient knee surgery is associated with fewer unplanned hospital admissions but more phase II nursing interventions. *Anesthesiology* 97(4):981–988
- Akoglu H (2018) User's guide to correlation coefficients. *Turk J Emerg Med* 18(3):91–93
- Padwal JA, Burton BN, Fiallo AA, Swisher MW, Gabriel RA (2019) The association of neuraxial versus general anesthesia with inpatient admission following arthroscopic knee surgery. *J Clin Anesth* 56:145–150
- Saltzman BM, Cvetanovich GL, Bohl DD, Cole BJ, Bach BR Jr, Romeo AA (2016) Comparisons of patient demographics in prospective sports, shoulder, and national database initiatives. *Orthop J Sports Med* 4(9):2325967116665589. <https://doi.org/10.1177/2325967116665589>
- Lutz C, Baverel L, Colombet P, Cournapeau J, Dalmy F, Lefevre N (2016) Pain after out-patient vs. in-patient ACL reconstruction: French prospective study of 1076 patients. *Orthop Traumatol Surg Res* 102(8S):S265–S270

**Publisher's note** Springer Nature remains neutral with regard to jurisdictional claims in published maps and institutional affiliations.

## Authors and Affiliations

Nadhaporn Saengpetch<sup>1</sup>  · Ratthapoom Watcharopas<sup>1</sup> · Chusak Kujkunasathian<sup>1</sup> · Chalermchai Limitloahaphan<sup>1</sup> · Chatchawan Lertbutsayanukul<sup>1</sup> · Chaiyanun Vijittrakarnrung<sup>1</sup> · Paphon Sa-ngasoongsong<sup>1</sup> · Vanlapa Arnuntasupakul<sup>2</sup> · Lisa Sangkum<sup>2</sup>

Ratthapoom Watcharopas  
poom911@hotmail.com

Chusak Kujkunasathian  
hong3101@gmail.com

Chalermchai Limitloahaphan  
lerm110@yahoo.com

Chatchawan Lertbutsayanukul  
lchatchawan@hotmail.com

Chaiyanun Vijittrakarnrung  
drchaiyanun@gmail.com

Paphon Sa-ngasoongsong  
paphonortho@gmail.com

Vanlapa Arnuntasupakul  
Vanlapaa@gmail.com

Lisa Sangkum  
lisa.sangkum@gmail.com

<sup>1</sup> Department of Orthopedics, Faculty of Medicine  
Ramathibodi Hospital, Mahidol University, Bangkok 10400,  
Thailand

<sup>2</sup> Department of Anesthesiology, Faculty of Medicine  
Ramathibodi Hospital, Mahidol University, Bangkok 10400,  
Thailand