

'Houdini's Pituitary:' A Case Report of Regression of Pituitary Mass to Empty Sella in a 58-Year-Old Man with Autoimmune Hypophysitis

Cheow Peng Ooi,¹ Nor Azmi Kamarruddin,² Norlaila Mustafa,² Thean Yean Kew³

¹Endocrinology Unit, Department of Medicine, Universiti Putra Malaysia

²Endocrinology Unit, Department of Medicine, Pusat Perubatan Universiti Kebangsaan Malaysia

³Radiology Department, Pusat Perubatan Universiti Kebangsaan Malaysia

Abstract

A 58-year-old male presented with persistent severe headache, lethargy, decline libido and no neurological deficits. Besides quadruple anterior pituitary hormonal deficiencies, magnetic resonance imaging (MRI) demonstrated an enlarged ring-enhanced non-homogenous pituitary. Following hormonal replacement, these symptoms improved but empty sella evolved. The challenges of diagnosis and management were discussed. Awareness of the unclear etiology and uncertain clinical course of autoimmune hypophysitis in a man in this age group is essential for prompt and appropriate management.

Key words: autoimmune hypophysitis, empty sella, hypopituitarism, older male, pituitary enlargement

INTRODUCTION

We described our experience in managing an uncommon case of autoimmune hypophysitis (AH) in a 58-year-old man. The initial clinical picture of quadruple anterior pituitary hormonal deficits and pituitary enlargement suggested the patient had macroadenoma but did not completely correlate with the presenting symptoms and the rate of evolution to empty sella. The presence of AH in a man of this age group with a pituitary mass evolving to an empty sella within a short duration of seven months is rare. The etiology in this patient was a suspected autoimmune mechanism when we considered the unusual clinical course and the coincidental rate of regression of the enlarged pituitary to an almost empty sella.

CASE

A 58-year-old man initially had a three-month history of persistent severe headache, lethargy and decline in sexual function with no visual and neurological deficit. There were no drenching night sweats, unexplained weight loss, fever, abdominal discomfort, swelling on the neck, axilla or groin, arthralgia and joint swelling, myalgia or myositis, shortness of breath or cough. His past medical history was unremarkable with no history of autoimmune disorders or endocrinopathy. The baseline early morning serum cortisol level was low (<22 nmol/L) (N: 68-469) with a normal serum adrenocortical hormone (ACTH) level of 5.0 pg/mL (N: 0-46.0). Despite the subnormal serum luteinizing hormone (LH) 0.9 IU/L (N: 2.0-12.0) and the

follicle stimulating hormone (FSH) of 1.9 IU/L (N: 1.5-14.0) at the lower limit of normal, the corresponding serum testosterone level of 1.71 nmol/L (N: 9.9-52.4) was also low. In addition, the low level of serum TSH (0.86 uIU/L) (N: 0.32-5.0) response was inappropriate to the low serum free thyroxine (T4) level of 9.26 pmol/L (N: 9.10-23.80). There was also a low growth hormone (GH) level of <0.15 mIU/L (N: 0.16-16.0) with normal prolactin level of 2.04 ug/L (N: 1.61-18.77) at presentation. Formal perimetry showed no visual field deficit. There was no diabetes insipidus. Anti-thyroid peroxidase (TPO) antibodies level was not raised at 20.4 IU/mL (N: 0-35). The full blood picture did not show any histiocytes. Chest X-ray also showed no mediastinal enlargement, pulmonary infiltrates or hilar lymphadenopathy in both the lung fields. However, serum angiotensin-converting enzyme was not sent as there was no suggestion of sarcoidosis from our clinical assessment. Moreover, this assay was not available in our institution, and the patient could not afford the additional cost of sending to another laboratory with the facilities.

Initial magnetic resonance imaging (MRI) demonstrated a 20 mm by 14 mm by 10 mm non-homogenous mass occupying the pituitary fossa. This enlarged pituitary mass (white arrow in A) is associated with suprasellar extension (Figure 1). There is a T1 hyperintense rim around the wall of the mass, with some more amorphous hyperintensities at a dependent location within the lesion core. These T1 hyperintensities could represent either methemoglobin or proteinaceous content. Polypoidal T1 hypointensity within the sphenoid sinus anteriorly (white

ISSN 0857-1074 (Print) | ISSN 2308-118x (Online)

Printed in the Philippines

Copyright © 2018 by the JAFES

Received: April 6, 2017. Accepted: May 21, 2018.

Published online first: May 24, 2018.

<https://doi.org/10.15605/jafes.033.01.12>

Corresponding author: Cheow Peng Ooi, PhD

Endocrine Unit, Department of Medicine

Faculty of Medicine and Health Sciences

Universiti Putra Malaysia, 43400 Serdang, Malaysia

Tel. No.: +603-89472557

E-mail: cpooi2012@yahoo.com

ORCID iD: <https://orcid.org/0000-0003-4038-8866>

arrowhead in A), which enhanced post-gadolinium (not shown), is attributed to reactive inflammation. No appreciable enhancement of this mass was detected, nor was there evidence for a thickened pituitary infundibulum or hypothalamus. This initial MRI features of the enlarged pituitary, no thickening of pituitary infundibulum or hypothalamus, the negative clinical screening test for autoantibodies, sarcoidosis, tuberculosis, lymphoproliferative disorders and other granulomatous lesions suggested a macroadenoma.

Correction of the hormonal deficit was the priority as our patient did not have compression of the optic nerve leading to visual field deficit. A physiological dose of hydrocortisone (10 mg am and 5 mg at noon) and oral levothyroxine of 75 mcg daily were commenced. Intramuscular testosterone 250 mg every three weeks was also initiated. His symptoms improved with the hormonal replacement therapy, which correlated with the improvement in his repeated hormonal profile. After the hormonal treatments for more than six months, the free T4 level improved to 16.72 pmol/L with only a minimal decline in the serum TSH level (0.27 uIU/L) and an improvement in serum testosterone of 49.8 nmol/L. His early morning serum cortisol level remained at <0.22 nmol/L. During this interval period, he denied any symptoms, such as syncope and severe headache, nor there was a new hormonal deficit to suggest pituitary apoplexy.

An MRI of the pituitary was repeated seven months following clinical improvement with hormone replacement therapy. Despite the absence of visual field deficit, reassessment of the size of pituitary mass is important for the determination of the subsequent treatment course. This follow-up MRI showed a drastic regression of the pituitary mass (Figure 2). While the T1 hyperintense "bright spot" of the posterior pituitary is appreciated (white arrowhead in A), much of the anterior pituitary appears to be flattened against the seller floor (white arrow in A). The optic chiasm prolapsed directly and inferiorly into the sella from its normal suprasellar location (black arrow in B), possibly reflecting traction due to post-inflammatory fibrotic process. Predominantly cerebrospinal fluid-filled pituitary fossa and the resolution of the inflammatory changes within the sphenoid sinus is also noted. A third MRI six months later revealed similar features of an empty sella. Formal perimetry assessments on both follow-up assessments did not show any visual field deficit.

DISCUSSION

The gender, the age of our patient at diagnosis and regressing pituitary mass to an empty sella without any neurological deficit or worsening of hormonal status is unusual.¹ We diagnosed AH clinically with the exclusion of other important causes of enlarged pituitary: lymphoma and granulomatous hypophysitis. Our patient was

assessed and screened clinically with clinical history, physical examination and relevant biochemical, endocrinological, hematological and radiological investigations for the above problems. In addition, the clinical course of improved symptoms and well-being with a physiological dose of hydrocortisone as well as the initial inflammation with subsequent fibrosis in the empty sella (Figures 1 and 2), suggest an autoimmune inflammatory etiology in the pituitary. Moreover, the features of pituitary regression in the serial MRIs (Figures 1 and 2) appeared to be similar to the changes of AH induced in mice leading to pituitary atrophy and secondary empty sella.² In contrast, pituitary enlargement secondary to lymphoma or sarcoidosis have other clinical features and will require definitive chemotherapy or high dose corticosteroids respectively.

AH is a rare autoimmune inflammation of the pituitary gland. Majority, 90%, of AH are women (woman: man 6: 1-8: 1) with 90% premenopausal.^{1,3} There is a preponderance of women in late pregnancy and first six months of postpartum. The average age at diagnosis is 35 years for women and 45 for men.¹ Sporadic cases have also been reported in children, men, and the elderly.⁴ No family or ethnic predisposition has been described. This rate of regression to empty sella in AH (three to seven months) has been reported in postpartum, young women and a younger man but not in a man of this age group.

The symptoms and hormonal deficits in our patient were consistent with adenohypophysitis, the most common manifestation of AH. In addition, the affected pattern of corticotrophs, gonadotrophs, somatotrophs, and thyrotrophs were also like most of the previously reported cases.⁵ Other manifestations not found in our patient, for example, involving the infundibular stem, the posterior lobe of the pituitary gland (infundibuloneurohypophysitis) or the whole pituitary (panhypophysitis) are less common. In addition, adenohypophysitis preceded both infundibuloneurohypophysitis and panhypophysitis has also been reported.³

The presenting clinical features in our patient, his hormonal profile of the anterior pituitary and the secondary target organs suggested a primary pituitary dysfunction. Despite the low early morning serum cortisol level (<22 nmol/L), there was no paradoxical increase in the serum ACTH level which remained at 5.0 pg/mL. Similarly, the low level of serum free T4 (9.26 pmol/L), serum testosterone (1.71 nmol/L) were not associated with a raised serum TSH level (0.86 uIU/L), serum LH (0.9 IU/L) and FSH (1.9 IU/L) respectively. This suggests secondary hypocortisolism (cortisol <22 mmol/L; ACTH 5.0 pg/mL), secondary hypogonadism (LH 0.9 IU/L, FSH 1.9 IU/L, serum testosterone 1.71 nmol/L), and secondary hypothyroidism (TSH 0.86 uIU/L, serum free T4 9.26 pmol/L) at baseline. A normal serum prolactin level (2.04 ug/L) ruled out a stalk effect of the pituitary gland. Taken together with the low serum GH level

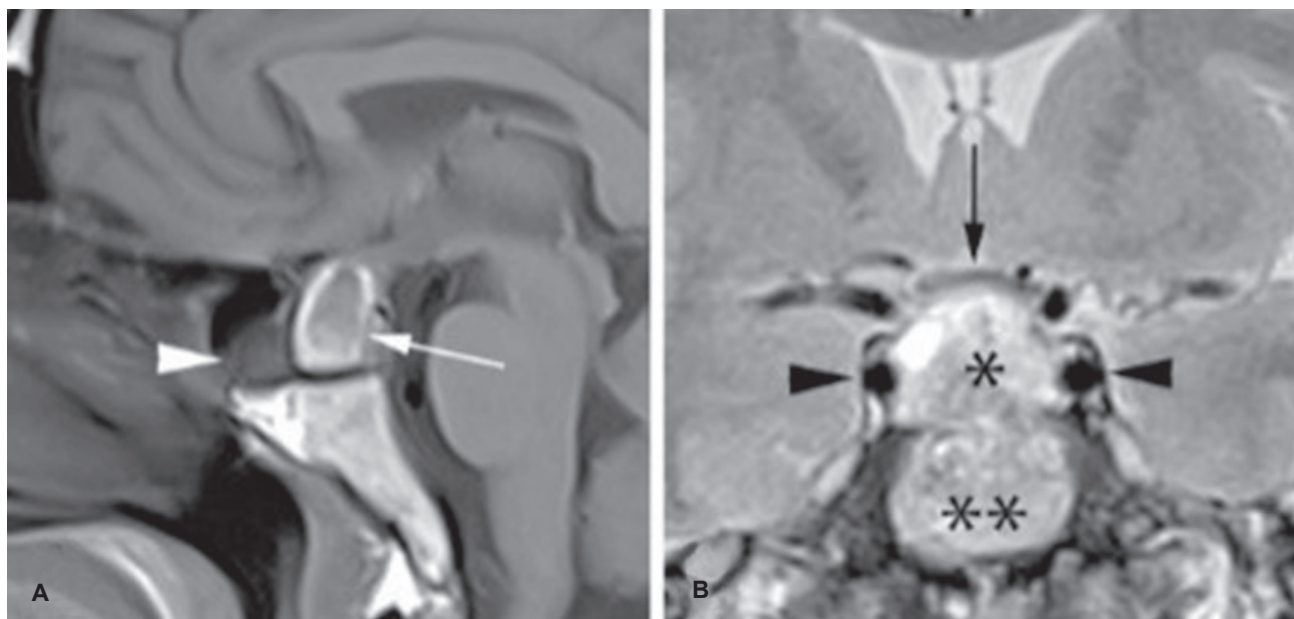


Figure 1. First pituitary MRI, T1-weighted midsagittal image without contrast (A) and T2-weighted coronal image (B). Heterogeneous pituitary mass but predominantly high signal at T2-weighted sequence (single asterisk in B). Its suprasellar component causes compression & mild upward displacement of the optic chiasm (black arrow in B). Double asterisks indicate the basisphenoid.

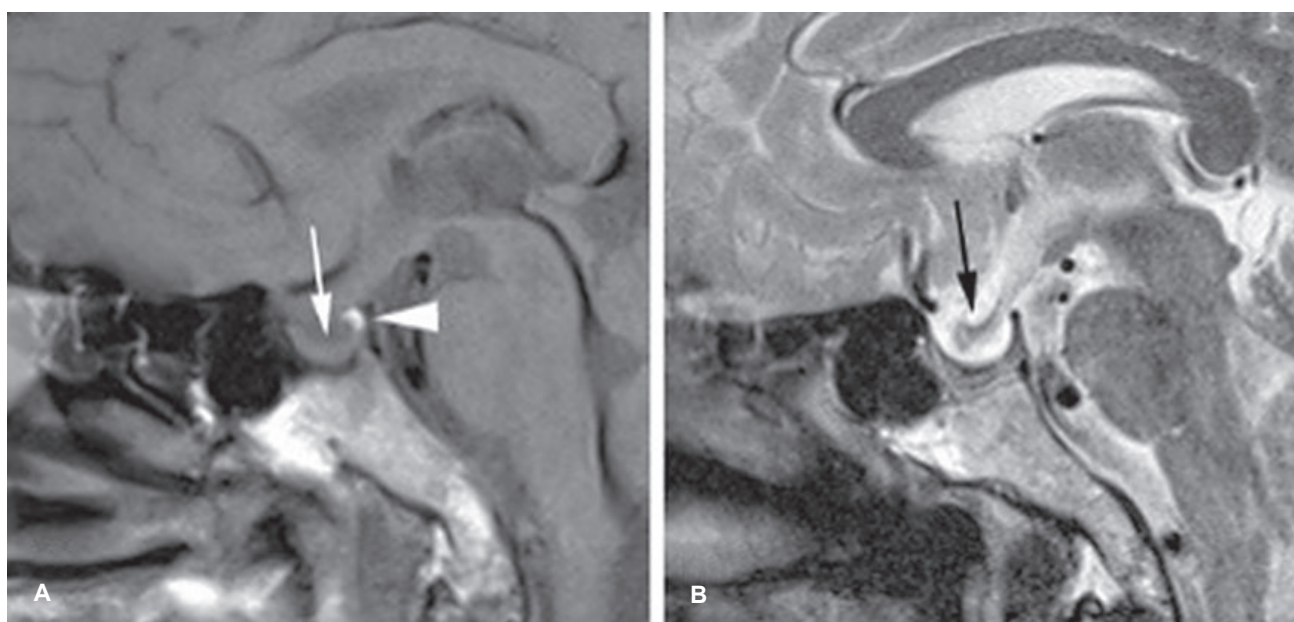


Figure 2. Follow up MRI in the midsagittal plane, T1-weighted (A) and T2-weighted images (B). The T1 hyperintense posterior pituitary (white arrowhead in A), with much of the anterior pituitary, flattened against the sellar floor (white arrow in A). The optic chiasm is prolapsed inferiorly into the sella (black arrow in B).

(0.15 mIU/L) this indicates an underlying primary dysfunction of the pituitary gland. Further, no improvement in the pituitary hormone responses over the follow-up periods suggested lack of recovery in the pituitary-primary organs hormonal axes.

The first MRI of this patient had findings suggestive of adenohypophysitis with no infundibuloneurohypophysitis (Figure 1). Although MRI of the pituitary gland is the imaging technique of choice for the characterization of the lesions, identifying AH is still challenging.⁶ In 75-90%

of cases of AH, a pituitary mass was observed as in Figure 1, 70% showed ring-like enhancement after administration of contrast.⁷ In infundibuloneurohypophysitis, thickening of the pituitary stalk, with a diameter of more than 3.5 mm in the medial eminence of the hypothalamus is characteristic.⁷ Marked enhancement of the stem after administration of gadolinium, which can extend to the lower end of the hypothalamus with a loss of hyperintensity of the neurohypophysis in the T1 sequence are also common characteristics. However, a hypointense posterior pituitary signal on T1 can also be observed in

Table 1. Differences between AH and pituitary adenoma^{3,4,6-8}

	AH	Pituitary adenoma
Clinical features	<ul style="list-style-type: none"> • Mass effect eg headache • Varying degree of hypopituitarism • Predilection for young female during pregnancy or postpartum. • Less common in other age group and male • Other autoimmune diseases may be present 	<ul style="list-style-type: none"> • Asymptomatic or mass effect • Varying degree of hypopituitarism • No age or sex predilection
Radiological features	<ul style="list-style-type: none"> • Characteristically diffusely thickened pituitary stalk >3.5 mm (absent in our patient) • Symmetrical enlargement • High post-gadolinium enhancement • Preserved posterior pituitary 'bright spot' • Intact sellar floor • May regress to 'empty sella' with fibrosis 	<ul style="list-style-type: none"> • No association with autoimmune diseases • Pituitary stalk normal size • Asymmetrical enlargement • Low post-gadolinium enhancement • Lost posterior 'bright spot' • Sellar floor may be eroded • Cystic lesion may be present

10% of normal subjects.⁸ In our patient, the serial hyperintense pituitary MRI images suggested a normal posterior pituitary and consistent with the absence of diabetes insipidus. Nevertheless, the absence of thickened pituitary stalk, the T1 hyperintense rim encased mass without contrast, and a radiological regression of the anterior pituitary to empty sella is unusual. In addition, even though the pituitary regressed to empty sella, there is no deterioration of the adenohypophysis hormonal pattern deficit in our patient.

Our patient did not present with any history of clinical autoimmune disorders, and the TSH and TPO antibodies were negative in this patient. Thus, the use of antibodies to facilitate the diagnosis of AH was unhelpful for this patient. TSH and TPO antibodies were sent because the presence of associated autoimmune diseases was reported in 20-50% AH, consisting mainly Hashimoto thyroiditis followed by Graves' disease.⁹ Autoimmune adrenalitis was reported in 5-7% of cases, pernicious anemia and diabetes mellitus type 1 in 2%. Less frequently, association with autoimmune polyglandular syndrome type 2, vitiligo, mumps, lymphocytic disease, celiac disease, systemic lupus erythematosus and rheumatoid arthritis were also reported.

Antihypophyseal antibodies (against A-enolase or specific neuronal enolase) was not sent as these assays were not available in the local laboratories. These antibodies may support the diagnosis in 24% of the cases^{10,11} but its sensitivity does not exceed 36%.¹² However, these antibodies are nonspecific and detected in other endocrinopathies such as Cushing's disease, pituitary adenomas, Sheehan's syndrome, type 1 diabetes mellitus, Hashimoto's thyroiditis and Graves' disease. Therefore, antihypophyseal antibodies are only useful together with a thorough clinical assessment of the patient. As almost 80% of those patients with pituitary antibodies also have antibodies to thyroid gland or hormones,¹² thyroid antibodies may be surrogate markers in the absence of antihypophyseal antibodies assay. In our patient, thyroid antibodies screening was negative.

Although we did not have any histopathological specimen to confirm the diagnosis, our approach did not compromise the management of the patients. In the past,

only two-thirds of patients with AH have biopsy confirmation.³ Histopathological specimen from the biopsy specimen confirmed the nature of the lymphoplasmacytic infiltrate.¹³⁻¹⁵ Biopsy also rules out other diseases that may have a similar clinical presentation. However, diseases such as tuberculosis, sarcoidosis and immunoglobulin deposits (IgG4) have other presentations which can be diagnosed with other safe investigative modalities.¹¹ In our patient, the absence of symptoms and signs along with the negative blood investigations and normal chest x-ray rule out the above conditions. Considering the potential risks of unnecessary invasive procedure of the pituitary, presumptive diagnosis combining context and clinical features can facilitate effective treatment. Confirmation of pituitary biopsy is not always necessary.¹⁶ A case series suggested at the one, five and ten-year follow-up, there was no significant difference between the medically and surgically managed cohorts in term of ongoing symptomatology or need for pituitary hormone replacement.¹⁷ Therefore, it is important to differentiate between AH and pituitary adenoma to avoid putting the patient at risk for unnecessary surgery (Table 1).

AH has a variable course, with no definitive treatment. Our patient receiving a physiological dose of hydrocortisone. High dose corticosteroids have been used to suppress the inflammation in AH,^{3,18,19} and high doses of prednisolone were reported to be effective in reducing pituitary growth in 62.5% of the cases.^{3,20} Pulse methylprednisolone was most effective when the disease is less than six months.²¹ Nevertheless, the number of AH is still too small for randomized controlled trials as well as characterization of the clinical features that respond to corticosteroid. Other authors have suggested immunosuppressive treatments such as methotrexate and azathioprine.^{9,18,19,21} Since our patient had drastic regression of the pituitary size, other immunosuppressive treatment was not indicated.

The prognosis of AH is variable, depending on the degree of inflammatory infiltration, duration, residual fibrosis and response to treatment.¹ In our patient, the clinical features, persistent yet stable pituitary hormonal deficit, was discordant with the regression of pituitary mass. Due to the uncertain clinical course, close, continuous active

surveillance to monitor the long-term progression of the disease in our patient is required.

CONCLUSION

Although AH is extremely rare in a man in the late fifties, it must be considered in any sudden loss of anterior pituitary hormonal functions, and MRI findings of ring-enhanced varying hypointense mass. Since a biopsy for definitive diagnosis involved risks, a presumptive diagnosis of AH may be made based on clinical, laboratory, and radiologic information and a high index of suspicion. Exclusion of pituitary macroadenoma, lymphoma and granulomatous hypophysitis is also important. Prompt diagnosis will facilitate prompt treatment and rapid hormonal replacement by a multidisciplinary medical team to minimize the morbidity. Although there is documentation of variable rate of regression of pituitary mass to an empty sella in AH of younger premenopausal women, this rate of regression in a man of this age group has not been reported. Since the course of the disease for this patient is uncertain, close, continuous active surveillance along with prompt and appropriate management is essential.

Ethical Consideration

Patient consent was obtained before submission of the manuscript.

Statement of Authorship

All authors certified fulfillment of ICMJE authorship criteria.

Author Disclosure

The authors declared no conflict of interest.

Funding Source

None.

References

- Bellastella G, Maiorino MI, Bizzarro A, et al. Revisitation of autoimmune hypophysitis: Knowledge and uncertainties on pathophysiological and clinical aspects. *Pituitary*. 2016;19(6):625-42. PMID: 27503372. <https://doi.org/10.1007/s11102-016-0736-z>.
- Lupi I, Zhang J, Gutenberg A, et al. From pituitary expansion to empty sella: Disease progression in a mouse model of autoimmune hypophysitis. *Endocrinology*. 2011;152(11):4190-8. PMID: 21862619. PMID: PMC3198994. <https://doi.org/10.1210/en.2011-1004>.
- Caturegli P, Newschaffer C, Olivi A, Pomper MG, Burger PC, Rose NR. Autoimmune hypophysitis. *Endocr Rev*. 2005;26(5):599-614. PMID: 15634713. <https://doi.org/10.1210/er.2004-0011>.
- Glezer A, Paraiba DB, Bronstein MD. Rare sellar lesions. *Endocrinol Metab Clin North Am*. 2008;37(1):195-211. PMID: 18226737. <https://doi.org/10.1016/j.ecl.2007.10.003>.
- Honegger J, Schlaffer S, Menzel C, et al. Diagnosis of primary hypophysitis in Germany. *J Clin Endocrinol Metab*. 2015;100(10):3841-9. PMID: 26262437. <https://doi.org/10.1210/jc.2015-2152>.
- Di Iorgi N, Morana G, Maghnie M. Pituitary stalk thickening on MRI: When is the best time to re-scan and how long should we continue re-scanning for? *Clin Endocrinol (Oxf)*. 2015;83(4):449-55. PMID: 25759231. <https://doi.org/10.1111/cen.12769>.
- Wang S, Wang L, Yao Y, et al. Primary lymphocytic hypophysitis: Clinical characteristics and treatment of 50 cases in a single centre in China over 18 years. *Clin Endocrinol (Oxf)*. 2017;87(2):177-84. PMID: 28423475. <https://doi.org/10.1111/cen.13354>.
- Imura H, Nakao K, Shimatsu A, et al. Lymphocytic infundibuloneurohypophysitis as a cause of central diabetes insipidus. *N Engl J Med*. 1993;329(10):683-9. PMID: 8345854. <https://doi.org/10.1056/NEJM199309023291002>.
- Caturegli P. Autoimmune hypophysitis: An underestimated disease in search of its autoantigen(s). *J Clin Endocrinol Metab*. 2007;92(6):2038-40. PMID: 17554056. <https://doi.org/10.1210/jc.2007-0808>.
- Ricciuti A, De Remigis A, Landek-Salgado MA, et al. Detection of pituitary antibodies by immunofluorescence: Approach and results in patients with pituitary diseases. *J Clin Endocrinol Metab*. 2014;99(5):1758-66. PMID: 24606106. PMID: PMC4010700. <https://doi.org/10.1210/jc.2014-1049>.
- Guaraldi F, Giordano R, Grotoli S, Ghizzoni L, Arvat E, Ghigo E. Pituitary autoimmunity. *Front Horm Res*. 2017;48:48-68. PMID: 28245451. <https://doi.org/10.1159/000452905>.
- Strömberg S, Crock P, Lernmark A, Hulting AL. Pituitary autoantibodies in patients with hypopituitarism and their relatives. *J Endocrinol*. 1998;157(3):475-80. PMID: 9691980.
- Beressi N, Beressi JP, Cohen R, Modigliani E. Lymphocytic hypophysitis. A review of 145 cases. *Ann Med Interne (Paris)*. 1999;150(4):327-41. PMID: 10519020.
- Ezzat S, Josse RG. Autoimmune hypophysitis. *Trends Endocrinol Metab*. 1997; 8(2):74-80. PMID: 18406790.
- Sautner D, Saeger W, Lüdecke DK, Jansen V, Puchner MJ. Hypophysitis in surgical and autoptical specimens. *Acta Neuropathol*. 1995;90(6):637-44. PMID: 8615086.
- Howlett TA, Levy MJ, Robertson IJ. How reliably can autoimmune hypophysitis be diagnosed without pituitary biopsy. *Clin Endocrinol (Oxf)*. 2010;73(1):18-21. PMID: 20039888. <https://doi.org/10.1111/j.1365-2265.2009.03765.x>.
- Kyriacou A, Gnanalingham K, Kearney T. Lymphocytic hypophysitis: Modern day management with limited role for surgery. *Pituitary*. 2017;20(2):241-50. PMID: 27778295. <https://doi.org/10.1007/s11102-016-0769-3>.
- Laws ER, Vance ML, Jane JA Jr. Hypophysitis. *Pituitary*. 2006;9(4):331-3. PMID: 17080263. <https://doi.org/10.1007/s11102-006-0415-6>.
- Rivera JA. Lymphocytic hypophysitis: Disease spectrum and approach to diagnosis and therapy. *Pituitary*. 2006;9(1):35-45. PMID: 16703407. <https://doi.org/10.1007/s11102-006-6598-z>.
- Iseda I, Hida K, Tone A, et al. Prednisolone markedly reduced serum IgG4 levels along with the improvement of pituitary mass and anterior pituitary function in a patient with IgG4-related infundibulo-hypophysitis. *Endocr J*. 2014;61(2):195-203. PMID: 24335007.
- Kristof RA, Van Roost D, Klingmüller D, Springer W, Schramm J. Lymphocytic hypophysitis: Non-invasive diagnosis and treatment by high dose methylprednisolone pulse therapy? *J Neurol Neurosurg Psychiatry*. 1999;67(3):398-402. PMID: 10449568. PMID: PMC1736542.

Authors are required to accomplish, sign and submit scanned copies of the JAFES Author Form consisting of: (1) the Authorship Certification that the manuscript has been read and approved by all authors, and that the requirements for authorship have been met by each author, (2) the Author Declaration that the article represents original material that is not being considered for publication or has not been published or accepted for publication elsewhere, (3) the Statement of Copyright Transfer/accepted manuscripts become the permanent property of the JAFES and are licensed with an Attribution-Share Alike-Non-Commercial Creative Commons License. Articles may be shared and adapted for non-commercial purposes as long as they are properly cited, (4) the Statement of Disclosure that there are no financial or other relationships that might lead to a conflict of interest. For Original Articles involving human participants, authors are required to submit a scanned copy of the Ethics Review Approval of their research. For manuscripts reporting data from studies involving animals, authors are required to submit a scanned copy of the Institutional Animal Care and Use Committee approval. For Case Reports or Series, and Images in Endocrinology, consent forms, are required for the publication of information about patients; otherwise, authors declared that all means have been exhausted for securing such consent. Articles and any other material published in the JAFES represent the work of the author(s) and should not be construed to reflect the opinions of the Editors or the Publisher.