

Common molecular markers between circulating tumor cells and blood exosomes in colorectal cancer: a systematic and analytical review

This article was published in the following Dove Press journal:
Cancer Management and Research

Somayeh Vafaei ¹⁻³
Fahimeh Fattahi^{1,2}
Marzieh Ebrahimi ³
Leila Janani⁴
Ahmad Shariftabrizi⁵
Zahra Madjd ^{1,6}

¹Department of Molecular Medicine, Faculty of Advanced Technologies in Medicine, Iran University of Medical Sciences, Tehran, Iran; ²Student Research Committee, Iran University of Medical Sciences, Tehran, Iran; ³Department of Stem Cells and Developmental Biology, Cell Science Research Center, Royan Institute for Stem Cell Biology and Technology, ACECR, Tehran, Iran; ⁴Department of Biostatistics, School of Public Health, Iran University of Medical Sciences, Tehran, Iran; ⁵Memorial Sloan Kettering Cancer Center, New York, NY 10065, USA; ⁶Oncopathology Research Center, Iran University of Medical Sciences, Tehran, Iran

Correspondence: Zahra Madjd
Oncopathology Research Center,
Department of Molecular Medicine, Iran
University of Medical Sciences (IUMS),
Hemmat Street (Highway), Next to Milad
Tower, Tehran 14496-14530, Iran
Tel +98 218 670 3212
Fax +98 218 862 2608
Email Zahra.madjd@yahoo.com

Marzieh Ebrahimi
Department of Stem Cells and
Developmental Biology, Cell Science
Research Center, Royan Institute for
Stem Cell Biology and Technology,
ACECR, Tehran 16635-148, Iran
Tel +98 218 2516
Email mebrahimi@royaninstitute.org

Abstract: Nearly half of patients with colorectal cancer (CRC), the third leading cause of cancer deaths worldwide, are diagnosed in the late stages of the disease. Appropriate treatment is not applied in a timely manner and nearly 90% of the patients who experience metastasis ultimately die. Timely detection of CRC can increase the five-year survival rate of patients. Existing histopathological and molecular classifications are insufficient for prediction of metastasis, which limits approaches to treatment. Detection of reliable cancer-related biomarkers can improve early diagnosis, prognosis, and treatment response prediction and recurrence risk. Circulating tumor cells (CTCs) and exosomes in peripheral blood can be used in a liquid biopsy to assess the status of a tumor. Exosomes are abundant and available in all fluids of the body, have a high half-life and are released by most cells. Tumor-derived exosomes are released from primary tumors or CTCs with selective cargo that represents the overall tumor. The current systematic review highlights new trends and approaches in the detection of CRC biomarkers to determine tumor signatures using CTC and exosomes. When these are combined, they could be used to guide molecular pathology and can revolutionize detection tools. Relevant observational studies published until July 24, 2019 which evaluated the expression of tumor markers in CTCs and exosomes were searched in PubMed, Scopus, Embase, and ISI Web of Science databases. The extracted biomarkers were analyzed using String and EnrichR tools.

Keywords: colorectal cancer, circulating tumor cell, CTC, exosomes, diagnosis, prognosis, biomarker, systematic review

Introduction

Colorectal cancer (CRC) is the third highest cause of cancer deaths worldwide.^{1,2} The time of diagnosis directly influences the overall survival rate of patients. The five-year survival rates are estimated to decrease 12.5% after the occurrence of metastasis vs for localized cancer. Histological examination of tumor tissue is the gold standard for diagnosis, but is invasive, time-consuming, and nonrepeatable over time. There is a need for new methods that are simple, non-invasive, and inexpensive to provide clear clinical evidence and improve early detection or predict a response to treatment.^{3,4}

Serum biomarkers such as carcinoembryonic antigens (CEAs) and carbohydrate antigen 19-9 (CA19-9) along with multi-target stool DNA tests represent the concrete implementation of non-invasive methods for CRC screening.^{5,6} There is urgent need for more reliable molecular markers that demonstrate the heterogeneity of cancer

cells during progression. The use of biological fluids as sources of nucleic acid-biomarkers for liquid biopsies in oncology has clinical promise.^{7,8} Molecular characterization of cancer signatures also can provide relevant information for personalized treatment of tumors.^{9,10} Circulating tumor cells (CTCs) and exosomes are shed from a tumor mass and enter the bloodstream. They can provide a metastatic niche for the invasion and migration of a tumor, so detection of their markers is critical.¹¹

Ashworth et al, first identified CTCs as valuable indicators of cancer progression.¹² CTCs detach from the primary tumor, intravasate into the bloodstream, evade immune detection, survive and extravasate into the microvessels of target tissue to establish a micro-metastatic niche.¹³ They have been identified in many cancers, including colon cancer. CTCs in the bloodstream may exist as single cells with a different EMT phenotypes or as clusters that bind to platelets or macrophages or are reactivated as stromal cells.^{14,15} The presence and number of CTCs before and during treatment are a strong independent predictor of shorter progression-free survival and overall survival of CRC patients.¹⁶ In spite of their advantages, researchers believe that the most challenging obstacles related to research on CTCs are their extremely low numbers, short lifetimes, fragility, and their heterogeneity and plasticity. The investigation of specific and reliable markers for their detection or isolation is an undeniable issue.¹⁷

Extracellular vesicles (EVs) generally include microvesicles (100–350 nm), apoptotic bodies (500–1000 nm), and exosomes (30–150 nm).¹⁸ Exosomes are nanovesicles with membrane-bound phospholipids which introduced and confirmed by Pan et al,¹⁹ and are actively secreted by mammalian cells into body fluids such as urine, plasma, and saliva. Exosomal cargo includes lipids, proteins, DNA, and RNA (mRNA, miRNA, long non-coding RNA) that are selected according to their roles. Exosomes involved in many biological processes, especially intercellular communication, establish a premetastatic niche by carrying oncogenic elements that suppress host immune responses.²⁰

Exosomes are abundant, have high half-lives and are released by most cells. This is in contrast with CTCs, which are tumor specific, rare, fragile, have a short life and are difficult to isolate. It is possible to design a molecular marker common between the exosomes and CTCs for better understanding of the metastasis process. American Society of Clinical Oncology suggests circulating exosomes may provide an alternative platform for monitoring disease

progression as opposed to CTCs.²¹ Several ongoing studies have aimed at quantifying a stress protein or other biomarkers in the blood and urine for monitoring and early diagnosis of malignant solid tumors (<https://clinicaltrials.gov>). The current analytical review is the first to explore similar molecular mechanisms and pathways between CTCs and Exosomes. In this systematic review, all molecular mechanisms that can potentially apply to the diagnosis and prognosis of CRC using CTCs and exosomes are discussed.

Materials and methods

Search strategy for literature mining

Observational studies evaluating the expression of circulating CRC cells and exosomes markers from 1980 to July 24, 2019 were electronically searched for in the PubMed, Scopus, Embase, and ISI Web of Science databases. The search syntax was modified for each database in accordance with their rules, the Mesh terms and keywords as listed in detail in Table 1.

The authors (S. Vafaei and F. Fattahi) searched and identified eligible studies and excluded all irrelevant articles after reviewing the publication titles and abstracts. Duplicate publications were excluded. Discrepancies were resolved between the two reviewers by consensus and by consulting the other authors. Next, the full text of the selected publications was retrieved and fully reviewed. This systematic review has been carried out in accordance with the Preferred Reporting Items for Systematic Reviews and Meta-Analyses.²²

Publication inclusion criteria

The inclusion criteria for this systematic review followed the criteria of population, intervention, control, and outcomes. Observational studies (case-control) investigating CTC and exosomes mRNA and gene markers for the diagnosis and prognosis of CRC patient samples were included if they met the following criteria:

1. The article must be published in English and the full text must be available.
2. Studies included those on CRC patient blood samples and human blood for CTC, although tissue or cell lines for exosomes were done because exosomes research is rare and in its initial stages.
3. Expression of mRNA and gene markers in patient specimens or cell lines was detected by established molecular methods.

Table I Search strategy of CTC and exosome in colorectal cancer

Search strategy		No. of papers
		2019 24 July
SCOPUS		
1	(TITLE-ABS-KEY (cecum OR colon OR sigmoid OR rectum OR anal)) AND (TITLE-ABS-KEY ((neoplasm OR cancer OR tumor OR tumors OR carcinoma))) OR (TITLE-ABS-KEY ((colorectal AND neoplasms OR crc)))	258,569
2	(TITLE-ABS-KEY (circulating AND tumor AND cell)) OR (TITLE-ABS-KEY (circulating AND neoplastic AND cells)) OR (TITLE-ABS-KEY (neoplasm AND micro-metastasis)) OR (TITLE-ABS-KEY (ctc OR ctm OR dtc))	60,012
3	((TITLE-ABS-KEY (gene AND expression AND profiling)) OR (TITLE-ABS-KEY (messenger AND rna)) OR (TITLE-ABS-KEY (rna OR transcriptome OR mrna))) AND ((TITLE-ABS-KEY (early AND diagnosis)) OR (TITLE-ABS-KEY (early AND detection)) OR (TITLE-ABS-KEY (prognosis OR diagnosis OR biomarkers OR screening OR diagnostic OR prognosis OR prognostic)))	209,207
4	(TITLE-ABS-KEY (extracellular AND vesicle)) OR (TITLE-ABS-KEY (cell-derived AND microparticles)) OR (TITLE-ABS-KEY (extracellular AND vesicles)) OR (TITLE-ABS-KEY (ev OR microvesicle OR exosomes))	274,615
1 & 2 & 3	((TITLE-ABS-KEY (gene AND expression AND profiling)) OR (TITLE-ABS-KEY (messenger AND rna)) OR (TITLE-ABS-KEY (rna OR transcriptome OR mrna))) AND ((TITLE-ABS-KEY (early AND diagnosis)) OR (TITLE-ABS-KEY (early AND detection)) OR (TITLE-ABS-KEY (prognosis OR diagnosis OR biomarkers OR screening OR diagnostic OR prognosis OR prognostic))) AND ((TITLE-ABS-KEY (circulating AND tumor AND cell)) OR (TITLE-ABS-KEY (circulating AND neoplastic AND cells)) OR (TITLE-ABS-KEY (neoplasm AND micrometastasis)) OR (TITLE-ABS-KEY (ctc OR ctm OR dtc))) AND ((TITLE-ABS-KEY (cecum OR colon OR sigmoid OR rectum OR anal)) AND (TITLE-ABS-KEY ((neoplasm OR cancer OR tumor OR tumors OR carcinoma))) OR (TITLE-ABS-KEY ((colorectal AND neoplasms OR crc)))) AND (LIMIT-TO (LANGUAGE, "English")) AND (LIMIT-TO (SRCTYPE, "j")) AND (LIMIT-TO (DOCTYPE, "ar")) OR LIMIT-TO (DOCTYPE, "no") OR LIMIT-TO (DOCTYPE, "le")) AND (LIMIT-TO (EXACTKEYWORD, "Human"))	118
1 & 2 & 4	((TITLE-ABS-KEY (gene AND expression AND profiling)) OR (TITLE-ABS-KEY (messenger AND rna)) OR (TITLE-ABS-KEY (rna OR transcriptome OR mrna))) AND ((TITLE-ABS-KEY (early AND diagnosis)) OR (TITLE-ABS-KEY (early AND detection)) OR (TITLE-ABS-KEY (prognosis OR diagnosis OR biomarkers OR screening OR diagnostic OR prognosis OR prognostic))) AND ((TITLE-ABS-KEY (extracellular AND vesicle)) OR (TITLE-ABS-KEY (cell-derived AND microparticles)) OR (TITLE-ABS-KEY (extracellular AND vesicles)) OR (TITLE-ABS-KEY (ev OR microvesicle OR exosomes))) AND ((TITLE-ABS-KEY (cecum OR colon OR sigmoid OR rectum OR anal)) AND (TITLE-ABS-KEY ((neoplasm OR cancer OR tumor OR tumors OR carcinoma))) OR (TITLE-ABS-KEY ((colorectal AND neoplasms OR crc)))) AND (LIMIT-TO (DOCTYPE, "ar")) OR LIMIT-TO (DOCTYPE, "ip")) AND (LIMIT-TO (EXACTKEYWORD, "Human")) AND (LIMIT-TO (LANGUAGE, "English")) AND (LIMIT-TO (SRCTYPE, "j"))	37
PUBMED		
1	((Colorectal Neoplasms[Title/Abstract] OR "Colorectal Neoplasms"[Mesh] OR CRC[Title/Abstract]) OR ((Cecum[Mesh] OR "Colon"[Mesh] OR "Colon, Sigmoid"[Mesh] OR "Rectum"[Mesh] OR "Anal Canal"[Mesh]) AND ("Neoplasms"[Mesh] OR "Carcinoma"[Mesh])) OR ((cecum[Title/Abstract] OR colon[Title/Abstract] OR sigmoid[Title/Abstract] OR rectum[Title/Abstract] OR anus[Title/Abstract]) AND (neoplasm[Title/Abstract] OR cancer[Title/Abstract] OR tumor[Title/Abstract] OR tumors[Title/Abstract] OR carcinoma[Title/Abstract]))	251,819
2	("Neoplastic Cells, Circulating"[Mesh] OR Circulating Tumor Cell[Title/Abstract] OR "Neoplasm Micrometastasis"[Mesh] OR CTC[Title/Abstract] OR CTM[Title/Abstract] OR DTC[Title/Abstract])	20,001
3	("Prognosis"[Mesh] OR "Diagnosis"[Mesh] OR "Early Diagnosis"[Mesh] OR "Early Detection of Cancer"[Mesh] OR "Biomarkers, Tumor"[Mesh] OR ("screening"[Title/Abstract] OR "early detection"[Title/Abstract] OR "Diagnosis"[Title/Abstract] OR "Diagnostic"[Title/Abstract] OR "Prognosis"[Title/Abstract] OR "Prognostic"[Title/Abstract]) AND ("RNA, Messenger"[Mesh] OR "RNA"[Mesh] OR "Transcriptome"[Mesh] OR "Gene Expression Profiling"[Mesh] OR "mRNA" OR "RNA" OR "Transcriptome" OR "gene expression profiling")	376,269
4	("extracellular vesicles"[Mesh] OR "Cell-Derived Microparticles"[Mesh] OR "EV" OR "microvesicle" OR "extracellular vesicle" OR "Exosomes"[Mesh] OR Exosome)	41,831

(Continued)

Table 1 (Continued).

Search strategy		No. of papers
		2019 24 July
1 & 2 & 3	Search (((((((Colorectal Neoplasms[Title/Abstract] OR "Colorectal Neoplasms"[Mesh] OR CRC[Title/Abstract]) OR ("Cecum"[Mesh] OR "Colon"[Mesh] OR "Colon, Sigmoid"[Mesh] OR "Rectum"[Mesh] OR "Anal Canal"[Mesh]) AND ("Neoplasms"[Mesh] OR "Carcinoma"[Mesh])) OR ((cecum[Title/Abstract] OR colon[Title/Abstract] OR sigmoid[Title/Abstract] OR rectum[Title/Abstract] OR anus[Title/Abstract]) AND (neoplasm[Title/Abstract] OR cancer[Title/Abstract] OR tumor[Title/Abstract] OR tumors[Title/Abstract] OR carcinoma[Title/Abstract]))) AND ((("Neoplastic Cells, Circulating"[Mesh] OR Circulating Tumor Cell[Title/Abstract] OR "Neoplasm Micrometastasis"[Mesh] OR CTC[Title/Abstract] OR CTM[Title/Abstract] OR DTC[Title/Abstract])) AND (((("Prognosis"[Mesh] OR "Diagnosis"[Mesh] OR "Early Diagnosis"[Mesh] OR "Early Detection of Cancer"[Mesh] OR "Biomarkers, Tumor"[Mesh]) OR ("screening"[Title/Abstract] OR "early detection"[Title/Abstract] OR "Diagnosis"[Title/Abstract] OR "Diagnostic"[Title/Abstract] OR "Prognosis"[Title/Abstract] OR "Prognostic"[Title/Abstract]) AND ("RNA, Messenger"[Mesh] OR "RNA"[Mesh] OR "Transcriptome"[Mesh] OR "Gene Expression Profiling"[Mesh] OR "mRNA" OR "RNA" OR "Transcriptome" OR "gene expression profiling")))) Filters: Humans; English	164
1 & 2 & 4	Search (((((((Colorectal Neoplasms[Title/Abstract] OR "Colorectal Neoplasms"[Mesh] OR CRC[Title/Abstract]) OR ("Cecum"[Mesh] OR "Colon"[Mesh] OR "Colon, Sigmoid"[Mesh] OR "Rectum"[Mesh] OR "Anal Canal"[Mesh]) AND ("Neoplasms"[Mesh] OR "Carcinoma"[Mesh])) OR ((cecum[Title/Abstract] OR colon[Title/Abstract] OR sigmoid[Title/Abstract] OR rectum[Title/Abstract] OR anus[Title/Abstract]) AND (neoplasm[Title/Abstract] OR cancer[Title/Abstract] OR tumor[Title/Abstract] OR tumors[Title/Abstract] OR carcinoma[Title/Abstract]))) AND (((("Prognosis"[Mesh] OR "Diagnosis"[Mesh] OR "Early Diagnosis"[Mesh] OR "Early Detection of Cancer"[Mesh] OR "Biomarkers, Tumor"[Mesh]) OR ("screening"[Title/Abstract] OR "early detection"[Title/Abstract] OR "Diagnosis"[Title/Abstract] OR "Diagnostic"[Title/Abstract] OR "Prognosis"[Title/Abstract] OR "Prognostic"[Title/Abstract]) AND ("RNA, Messenger"[Mesh] OR "RNA"[Mesh] OR "Transcriptome"[Mesh] OR "Gene Expression Profiling"[Mesh] OR "mRNA" OR "RNA" OR "Transcriptome" OR "gene expression profiling")))) AND (((("extracellular vesicles"[Mesh] OR "Cell-Derived Microparticles"[Mesh] OR "EV" OR "microvesicle" OR "extracellular vesicle" OR "Exosomes"[Mesh] OR Exosome)))) Filters: Humans; English	66
Embase		
1	(cecum OR sigmoid OR rectum OR anal) AND (neoplasm OR cancer OR tumor OR tumors OR carcinoma) OR "colorectal cancer" OR crc	323,384
2	ctc OR ctm OR dtc OR (circulating AND neoplastic AND cells) OR (circulating AND tumor AND cell) OR (neoplasm AND "micro-metastasis")	54,423
3	(early AND diagnosis) OR (early AND detection) OR biomarkers OR screening OR diagnostic OR prognosis OR prognostic AND (messenger AND rna) OR (gene AND expression AND profiling) OR mrna OR transcriptome	101,305
4	"membrane microparticle" OR "exosome"	25,614
1 & 2 & 3	#1 AND #2 AND #3 AND ([article]/lim OR [article in press]/lim OR [letter]/lim OR [note]/lim) AND [english]/lim AND [humans]/lim AND [embase]/lim	135
1 & 2 & 4	#1 AND #2 AND #4 AND ([article]/lim OR [article in press]/lim OR [letter]/lim OR [note]/lim) AND [english]/lim AND [humans]/lim AND [embase]/lim	52
Web of Science		
1	TI=(Cecum OR Colon OR Colon Sigmoid OR Rectum OR Anal) AND (neoplasm OR cancer OR tumor OR tumors OR carcinoma) OR TI=(Colorectal Neoplasms OR CRC)	43,039
2	TS=(Circulating Neoplastic Cells OR Circulating Tumor Cell OR Neoplasm Micrometastasis OR CTC OR CTM OR DTC)	44,339
3	TS=(Prognosis OR Diagnosis OR Early Diagnosis OR Early Detection OR Biomarkers OR screening OR Diagnostic OR Prognosis OR Prognostic) AND TS=(Messenger RNA OR RNA OR Transcriptome OR Gene Expression Profiling OR mRNA)	138,133
4	TS=(extracellular vesicles OR Cell-Derived Microparticles OR EV OR microvesicle OR extracellular vesicle OR Exosomes)	212,089

(Continued)

Table 1 (Continued).

Search strategy		No. of papers
		2019 24 July
1 & 2 & 3	#1 AND #2 AND #3 (#8 AND #7 AND #3) AND LANGUAGE: (English) AND DOCUMENT TYPES: (Article)	19
1 & 2 & 4	#1 AND #2 AND #4 AND (#8 AND #7 AND #3) AND LANGUAGE: (English)	15

Abbreviation: CTC, Circulating tumor cells.

- Studies demonstrated the correlation between mRNA profiling using isolation, detection, or validation methods, included sample type and size and other clinical parameters of diagnosis and prognosis, tumor stage and the frequency of estimated marker expression.
- Study characteristics (first author surname, publication year, and study design) were included.

Publication exclusion criteria

Exclusion criteria included:

- Evidence and article on CTC and exosomes covering review articles, seminars, letters, expert opinions, book chapters, meeting records, commentaries, and clinical guidelines.
- In-vitro or in-vivo experimental studies.
- Articles that were not published in English.
- Full text of the article not available.

Exclusion criteria for CTC articles were:

- Studies performed only on cell lines or tissue samples.
- Studied housekeeping genes, such as glyceraldehyde-3-phosphate dehydrogenase, actin beta, β 2-microglobulin, as they are not specific markers for CTC detection and expressed in all cells.
- Bioinformatics analysis or data mining without experimental confirmation of the introduced biomarkers.
- Therapy gaudiness based on the CTC results (pre-operative and postoperative) in predicting the clinical outcome, not counting for drug effect on the expression of CTC genes.
- The study only tested the spiked cell lines in human blood donors and not the actual patients.

In exosome studies, because of the limited data, we reviewed all articles on all markers that were introduced using the cell

lines, tissue, or blood, even those only introduced through bioinformatics means without experimental confirmation.

Risk of bias (quality) assessment

The quality of each study was assessed using the Newcastle–Ottawa Scale (NOS), a well-known scale for assessing the quality and risk of bias in observational studies.²³ NOS gives a score between 0 (minimum) and 9 (maximum). Studies with a NOS score >6 were considered to be of high quality, making them possible for use as potential moderators in meta-regression analysis.

Statistical analysis

Because the studies included were not sufficiently similar in terms of study design, experimental techniques, and heterogeneity of genetic variants, a meta-analysis was not performed.

Bioinformatics approach to systematic search

Molecular pathology is a valuable tool in the development of a cancer signature. The initially extracted markers in this article were subjected to STRING (<https://string-db.org/>) for better understanding of the significantly related pathway and secondary data were enriched using the EnrichR (amp.pharm.mssm.edu/Enrichr/) web tool. The GO project provided ontologies to describe the attributes of the gene products in the non-overlapping domains of molecular biology. Molecular function describes activities (such as catalytic or binding activities) at the molecular level. Biological processes describe biological goals accomplished by one or more ordered assemblies of molecular functions. Cellular component describes the locations of subcellular structures and macromolecular complexes.²⁴

Results Literature

The initial search retrieved a total of 607 studies using the search strategy. After primary selection, 497 papers were

excluded because they were duplicates, had irrelevant titles or were paper abstracts. Eventually, 110 studies were selected for further evaluation. The schematic of the design and the reasons for exclusions are summarized in Figures 1 and 2 for CTC and exosomes, respectively.

Clinical applications of CTCs and exosomes in CRC as diagnostic markers

CTCs

Antigen expression of circulating cells and their specific phenotypes affects the progression of cancer and patient survival; thus, the focus was on CTC molecular markers that could lead to the detection of CTC rather than isolation in blood samples. CTC detection methods included real-time polymerase chain reaction (RT-PCR), flow cytometry, fluorescence in situ hybridization, and immunocytochemistry. Isolation methods included Cellsearch, OncoQuick, Filtration, magnetic-activated cell sorting, fluorescence-activated cell sorting, Adnatest Colon Cancer Select and

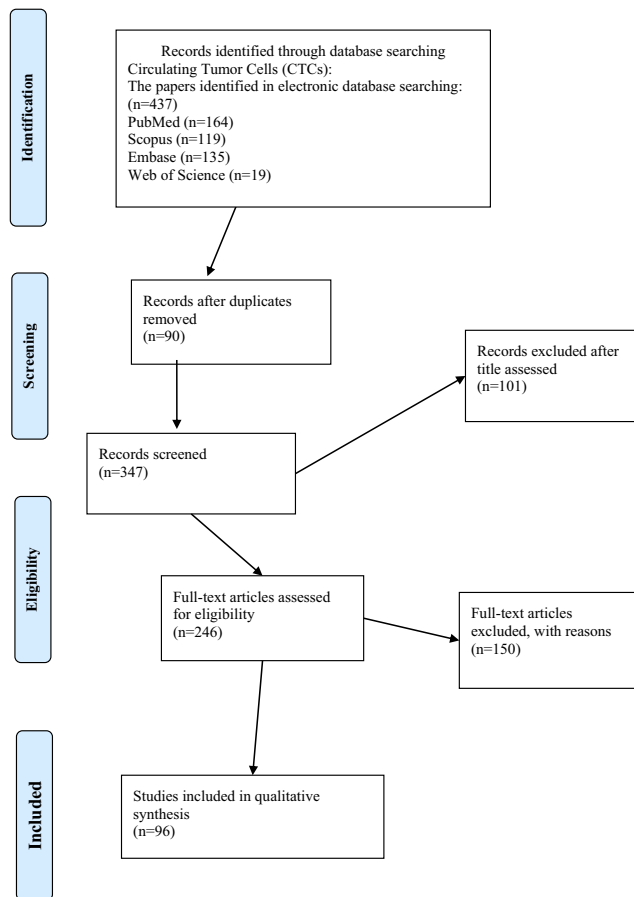


Figure 1 Design of PRISMA flow diagram explaining details of our search process that was applied during the article selection for circulating tumor cell.

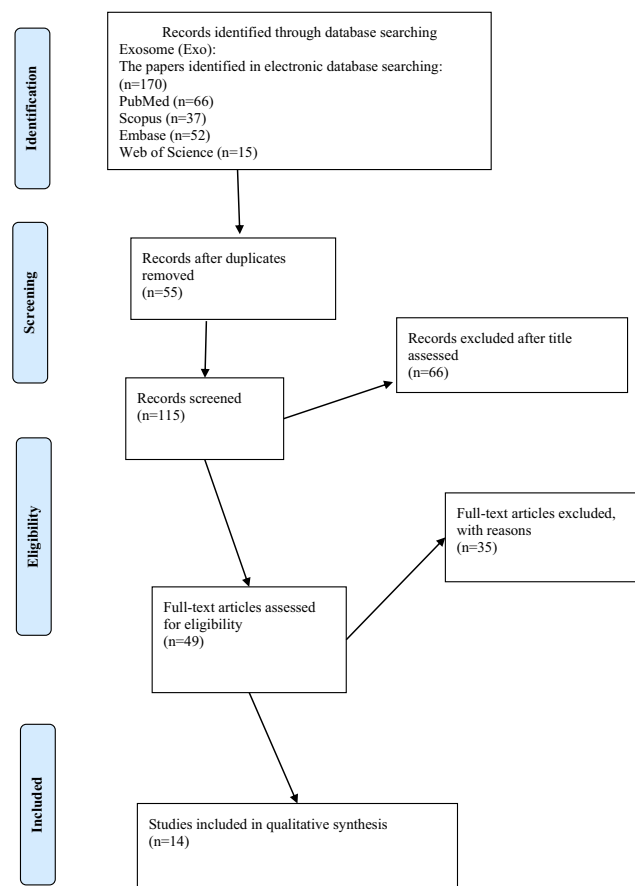


Figure 2 Design of PRISMA flow diagram explained details of our search process that applied during the article selection for Exosome.

Detect, CELLection electrophoresis assay, and microfluidic devices.

When attempting to find more reliable markers for CTCs in CRC cases, 6 out of 39 articles described only CK20 mRNA as the target gene, which is not transcribed in normal hematopoietic cells. It has previously been reported through immunohistochemistry by Moll et al,^{25–30} and has been seen in control blood samples through sensitivity assay and sampling,²⁹ in addition to CK20, CA19-9, and CEA, which is used in clinics routinely for CRC detection, also has been introduced as a marker of CTC in CRC. Six of 39 studied examined CEA alone^{31–36} or in association with markers such as CK19,^{37,38} anti-epithelial cell adhesion molecule (EPCAM),^{39–43} and transmission electron microscopy (TEM)-8.⁴⁴

Wong et al, used a sensitivity assay for the detection of CTCs and nodal metastases using CD44 splice variants as a tumor marker.⁴⁵ It has been proven that RT-PCR in combination with positive isolation of epithelial tumor cells (addition of Ber-EP4

immunomagnetic) and negative isolation of non-epithelial cells (CD45 immunomagnetic beads used to deplete leukocytes from MNC) could improve detection.^{30,36} Guanylyl-cyclase C (GCC) is another marker introduced to detect rare epithelial circulating metastatic cancer cells.^{46–48}

After 2004, researchers focused on multi-marker panels in literature or data mining as listed in Table 2.^{49–56} Besides these, novel markers such as serine (or cysteine) proteinase inhibitor, clade B (ovalbumin), SERPINB5,⁵⁷ epidermal growth factor receptor (EGFR),^{58–60} epithelial cell transforming sequence 2 oncogene (ECT2)⁶¹ FAM172A,⁶² A3 receptor⁶³ have been examined as well as other markers, especially through bioinformatics analysis.⁶⁴

Exosomes

Exosome isolation methods consisted of ultracentrifugation, commercial kits, and a combination of several methods based on their physical, chemical, immunological, and molecular markers. Characterization of exosomes was also achieved based on morphology, such as with scanning electron microscopy and TEM, based on size, such as with dynamic light-scattering and nanoparticle tracking assay or based on molecular profiling through conventional enzyme-linked immunosorbent assay, polymerase chain reaction, and Western blotting.

Exosomes carry molecular markers such as DNA, RNA, and proteins. Many reports indicate that exosomes contain miRNAs;^{65–68} moreover, blood EVs contain a substantial fraction of intact mRNAs^{69–72} and a large number of assembling spliced junctions-circRNAs⁷³ and long non-coding RNAs.^{72,74,75} Exosomal proteins belong to the following functional groups: tetraspanins, including CD63 antigen (CD63), CD9 antigen (CD9), CD81 antigen (CD81), heat shock proteins (HSC70 and HSC90), and endosomal sorting complexes required for transport proteins such as Alix and TSG101, found in a wide range of exosomes.⁷⁶ The size of the extra vesicles varied and could influence gene expression. Larger vesicles (<100 nm) exhibited the greatest amount of EPCAM in extracted exosomes of HCT116 (CRC cell line) cells.⁷⁷ The level of glypican-1 was evaluated in exosomes of patients before and after surgical treatment.⁷⁸

KRTAP5-4 and MAGEA3 mRNA in the serum of patients could be used as diagnostic biomarkers to detect CRC.⁷⁹ Ct-OATP1B3 mRNA was present in EVs derived from HCT116, HT-29, and SW480 cells that were declared

to be serum-based CRC biomarkers,⁸⁰ Huang et al, introduced UBC, H3F3A, HIST2H2AA3, AKT3, and HSPA1B as hub genes in bioinformatic analysis to serve as diagnostic markers and therapeutic targets of CRC in the future.⁸¹ Table 3 shows all of these results.

Clinical applications of CTCs and exosomes in CRC as prognostic markers

CTCs

Many researchers had discovered prognostic markers related to CRC as a beneficial tool for the detection of CTC. Five papers reported only CK20-positive as a prognostic marker. It caused significantly shorter survival in patients than the CK 20-negative marker.^{82–86} However, some studies emphasized only on CEA as a marker (five articles)^{87–91} and several studies also introduced both CK20 and CEA as prognostic markers.^{92–96} In most articles, CK20 and/or CEA were accompanied by markers such as CK19,^{97–102} GCC,^{96,103,104} Prominin 1 (CD133),^{95,100,105,106} EPCAM,^{107–109} survivin,^{110,111} ProtM,¹¹² mucin 1 (MUC 1),¹⁰⁵ and mucin 2 (MUC 2),⁹⁹ and telomerase reverse transcriptase (hTERT).^{101,113,114}

Douard et al, showed that the expression of carcinoembryonic antigen-related cell adhesion molecule 5 (CEACAM5; formerly CEA)^{102,115} and CEACAM7 (formerly CGM2)^{115,116} was more sensitive than use of a single marker in detecting CTCs, in contrast to the other studies, Bessa et al, showed that assessment of CTCs using RT-PCR CEA before surgery does not have prognostic value for CRC patients.¹¹⁷

Some articles examined markers that had been investigated previously, such as EGFR,^{107,118–121} Plastin3),^{122,123} anterior gradient-2,^{102,124,125} leucine-rich repeat-containing-G-protein-coupled receptor 5,^{102,109,126–128} double cortin-like kinase 1,^{109,127} twist family bHLH transcription factor 1,^{110,129} and aldehyde dehydrogenase 1^{105,129} as prognostic markers in CRC through CTC.

Gradilone et al, assessed CK19 (75%), CK20 (8%), and EGFR (25%) expression in CTCs of some malignant tumors, including CRC samples, by RT-PCR followed by southern blot hybridization. They reported no correlation between prognostic values of CTCs and clinical manifestations of CRC.¹³⁰

Histone-like protein (HLM),¹²⁰ tenascin C,¹²¹ aquaporin (AQP5),¹³¹ plakophilin 3, tyrosinase, prostate-specific antigen,¹³² universal MAGE-A,¹³³ disheveled segment polarity protein 1 (DVL1),¹³⁴ CD47,¹³⁵ and

Table 2 The biomarkers which worked for diagnostic of CRC in circulating tumor cells

Biomarker	Technique of isolation/detection of CTC	Technique of validation/related one	Related marker	Cutoff	Patients (number/type)	Patient stage	Author/year	CTCs positive rate	PMID
CK20	Nested RT-PCR ¹	SWI 116, HT29 cell spiking	-	5 mL	57 patients, 2 controls ² /Blood	I-IV ³	Soeth, 1996, ²⁸	35%	8,797,868
	Nested RT-PCR	A818-4 cell spiking	-	5 mL	39 patients, 12 controls/Blood	I-IV	Soeth, 1997, ²⁷	24%	9,242,433
	RT-PCR	HT29 cell spiking, Immunohistochemistry	PBGD	5-10 m	30 patients, 16 controls/Blood	I-IV	Vlems, 2002, ²⁹	30%	12,032,226
	CD45 Immune magnetic beads,/or Ber-EP4 immuno magnetic beads	LS174T cell spiking		5 mL	40 patients, 10 controls/Blood	A-D Dukes ³	Guo, 2005, ³⁰	80.0%, 82.5%, 72.5%	16,048,578
CEA	RT-PCR	-	-	5-10 mL	58 patients, 12 controls (abnormal)/Blood	A-C Dukes	Zhang, 2005, ²⁵	44.8% to 69.0%	15,637,763
	RT-PCR		CEA, CK19	15 mL	57/Blood	A-D Dukes	Katsumata, 2006, ²⁶	42.1%	17,058,136
	CD45 Immune magnetic beads and/or Ber-EP4 immuno magnetic beads	LS174T cell spiking		5 mL	25 patients, 10 controls/Blood	A-D Dukes	Guo, 2004, ³⁶	25.0%, 83.3%, 88.9%	15,490,093
	RT-PCR	Southern blotting, Colo201, HT116, HT29, and HT115 cell spiking	-	14 mL	31 patients, 22 controls/Blood	Liver metastasis	Jonas, 1996, ³¹	58%	9,014,772
	RT-PCR	Cell spiking	-	10 mL	95 patients, 11 controls/Blood	I-IV	Castells, 1998, ³²	41%	9,823,981
	RT-PCR	Colo201 cell spiking	-	14 mL	24 patients, 9 controls/Blood	B, C, D Dukes	Noh, 1999, ³³	41.1%	10,642,939

(Continued)

Table 2 (Continued).

Biomarker	Technique of isolation/detection of CTC	Technique of validation/related one	Related marker	Cutoff	Patients (number/type)	Patient stage	Author/year	CTCs positive rate	PMID
	Nested RT-PCR	In-vivo assay	CA199, CA72-4	7 mL	51 patients, 40 controls, 18 patients with benign colorectal disease/Blood	A-D Dukes	Guadagni, 2001. ³⁴	67%	11,289,125
	RT-PCR	HT29 and LSI47T cell spiking, Sequence analysis	CK20	20 mL	32 patients, 17 controls/Blood	-	Hampton, 2002. ³⁵	36%	12,420,218
CEA, CK19	Semi-quantitative RT-PCR	Southern blotting, SK-BR-3 cell spiking	-	20 mL	33 patients, 26 controls/Blood	B-D Dukes	Wong, 2001. ³⁸	64%, 88%	11,121,864
	RT-PCR	-	-	3 mL	53 patients, 25 controls/Blood	I-III	Silva, 2002. ³⁷	73.6% 32%	11,889,075
CEA, EPCAM	Adnatest ColonCancerSelect & Detect.	Multiplex RT-PCR	-	-	50 patients, 40 controls/Blood	I-III	Mourzikou, 2012. ⁴¹	66%, 6%	10.6051/j.issn.2224-3992.2012.01.070
EPCAM	Multigene qRT-PCR, flow cytometry		CK19, CK20, CEA, EGFR.	7.5 mL	49 patients/Blood	I-IV	Cohen, 2006. ³⁹	80%	16,945,168
EPCAM	Microfluidic device, FISH, Cellsearch		Pan CK, EPCAM	2 mL	5 patients, 200 controls/blood	With metastasis	Gogoi, 2016. ⁴⁰	100%	26,808,060
EPCAM	CTC-chip	NCI-H1650 cell spiking	-	2.7 mL	10 patients/Blood	Advanced	Nagrath, 2007. ⁴³	67%	18,097,410
CEA, TEM-8	RT-PCR	MAD-MB231 and HT29 cell spiking		5 mL	40 patients, 40 controls/Blood	I-III	Raeisassadati, 2011. ⁴⁴	55%, 22.5%	21,573,768
CD44	RT-PCR	Southern blotting, HCT116 cell spiking, Restriction enzyme analysis	-	15 mL	24 patients, 8 controls/Blood	B, C Dukes	Wong, 1997. ⁴⁵	16%	10.1046/j.1365-2168.1997.02685

(Continued)

Table 2 (Continued).

Biomarker	Technique of isolation/detection of CTC	Technique of validation/related one	Related marker	Cutoff	Patients (number/type)	Patient stage	Author/year	CTCs positive rate	PMID
GCC	Nested RT-PCR	-	PSA, PSMA, CEA, CK-19, CK-20, mucin 1, GA733.2.	-	24 patients, 20 controls/Blood	D Dukes	Fava, 2001. ⁴⁶	100%	11,579,116
	Nested Duplex RT-PCR	Immuno histochemistry	CD31	10 mL	58 patients, 11 controls/Blood	B-D Dukes	Tien, 2001. ⁴⁷	52%	11,410,499
	Nested Duplex RT-PCR	CCL-220 cell spiking, Immunohistochemistry, Western blotting	-	10 mL	68 patients, 11 controls/Blood	A-D Dukes	Tien, 2004. ⁴⁸	58.8%	15,192,312
BMP4, CytD, FAM3D, GPA33, ZPX2, LGALS4, TACSTD1, hTERT, TFF3, TM4SF3, UGT1A9, VILI, FLJ20127.	RT-PCR	-	B2M	10-15 mL	16 pooled patients, 16 controls/Blood	I-IV	Solmi, 2004. ⁴⁹	-, 100%, 100%, -, 100%, 100%, 100%, 100%, 100%, 100%, 37.5%, 83%, -, 36.3%	15,375,555
CK-20, CEA, CK-19, REG4, uPA, TIAMI.	RT-PCR	-	-	-	80 patients, 98 controls/Blood	I-II	Yeh, 2006. ⁵⁰	82.5%, 78.8%, 82.5%, 80.0%, 78.8%, 80.0%.	16,391,796
TMEM69, RANBP3, PRSS22.	Microarray screening.	QRT-PCR	-	10-15 mL	2 patients, 4 controls/Blood	TNM stage	Solmi, 2006. ⁵¹	~3-fold	17,054,783

(Continued)

Table 2 (Continued).

Biomarker	Technique of isolation/detection of CTC	Technique of validation/related one	Related marker	Cutoff	Patients (number/type)	Patient stage	Author/year	CTCs positive rate	PMID
LOC644844, FABP1, CEACAM5, MUC13, GUCA2A, ABP1, SLC26A3	Digital Gene Expression Displayer (DGED), RT-PCR	–	–	5 mL	8 patients, 9 controls/ Blood	–	Lauriola, 2010. ⁵²	–	20,596,680
SERPINB5	qRT-PCR	SW480 and T84 cell spiking	VSNLI, DPEP1, STC1.	5 mL	818 patients, 4 IBD, 8 controls, 36 control without malignant disease/Blood	TNM stage	Findelsen, 2008. ⁵⁷	36%	18,949,363
CK20, CK19, EGFR	Multiplex-PCR	–	–	6 mL	81 patients, 38 controls/Blood	0–IV	Vaiopoulos, 2014. ⁵⁸	–	24,922,677
CK20,CEA, EGFR,	Nested RT-PCR	–	–	–	36 patients, 18 controls/Blood	I–IV	Teama, 2010. ⁵⁹	41.7, 61.1%, 66.7%	10.10116/j.ejmhg.2009.10.001
EGFR	AdnaTest Colon Cancer Select, AdnaTest Colon Cancer detect	COLO 205, HCC-2998, HCT-116, LoVo, WiDr, CACO-2, HT-29, SW-480, T84, DLD-1, SW-948, SW-1116 cell spiking, IHC, Multiplex RT-PCR.	EPCAM, CEA.	15 mL	20 patients, 22 controls/Blood	TNM stage	Lankiewicz, 2008. ⁶⁰	18%	18,936,523
ECT2	Nested qPCR	–	CEA	4 mL	90 patients, 15 I controls/blood	I–IV	Chen, 2017. ⁶¹	–	28,362,321
FAM172A	Filtration	In situ hybridization	EpCAM, CK8, CK18, CK19, Vimentin, Twist, CD45 ⁺ .	5mL	45/Blood	I–IV	Cui, 2017. ⁶²	75.6%	28,618,931
A3 adenosine receptors	Real-time RT-PCR	Immunocytochemistry	–	40 mL	30/Blood	I–IV	Gessi, 2003. ⁶³	–	15,355,922

(Continued)

Table 2 (Continued).

Biomarker	Technique of isolation/detection of CTC	Technique of validation/related one	Related marker	Cutoff	Patients (number/type)	Patient stage	Author/year	CTCs positive rate	PMID
TGFβ1, APP, CD9, CLU, ITGB5, LIMSI, RSU 1, TIMP1, TLN1, VCL, BMP6.	CELLlection™, Agilent expression arrays	Real-time RT-PCR	EPCAM	7.5 mL	28 patients, 10 controls/Blood	Primary and metastasis	Barbazan, 2012. ⁵³		22,811,761
VILI, TBX20, GPA33, FAM132A	CELLlection™	Real-time RT-PCR, HT29 and HCT116 cell spiking	CD45 ⁻ , EPCAM	7.5 mL	44 patients, 22 controls/Blood	IV	Barbazan, 2012. ⁵⁴	77.2%	22,304,365
TSPAN8, LGALS4.	qRT-PCR	TRAM based data set meta-analysis	EPCAM, SPINK1, COL3A1, CEACAM5, COL1A2, CDH1, CKT18, SLC26A3, REG1A, FNI, LUM, CEACAM6, CK20	5 mL	67 patients, 67 controls/Blood	I-III	Rodia, 2016. ⁶⁴	–	26,993,598
LOXL3, ZEB2, VILI, TIMP1, CLU, TLN1	Adna Test colon cancer	–	CD45 ⁻ , EPCAM, CK 8, 18, and/or 19	7.5 mL	50 patients/Blood	Advanced	Alonso-Alconada 2017. ⁵⁵	–	29,058,262
VILI, CLU, TIMP1, LOXL3 and ZEB2	CELLlection™	qRT-PCR	EPCAM	7.5 mL	50 patients/Blood		Barbazan 2012. ⁵⁶	–	24,752,533

Abbreviations: RT-PCR, real-time polymerase chain reaction; Controls, healthy volunteer/donors; I-IV, TNM classification of malignant tumors (TNM); A-D, Dukes, Dukes staging system is a classification system for colorectal cancer.

Table 3 The biomarkers which worked for diagnostic of CRC in Exosome

Biomarker	Technique of exosome isolation	Technique of exosome validation	Technique of markers detection or validation	Related marker	Patients (number/type)	Patient stage	Author/year:	PMID
KRTAP5-4, MAGEA3	Centrifugation syringe filter	TEM, NTA, light microscope	Bioinformatic Analysis, RT-PCR	lncRNA	30 patients, 30 control/Blood	I-IV	Dong, 2016. ⁷⁹	27,197,301
GPC1	ExoCapTM	TEM, Flow cytometry, Western blotting	Flow cytometry, Western blot analysis	miR-96-5p, miR-149, miR-182-5p	102 patients, 89 control/tissue and Blood, Cell line (HT-29 & HCT-116), Mouse	I-II	Li, 2017. ⁷⁸	28,233,416
EPCAM	PEG	ELISA, SEM	qRT-PCR, SEM, DLS, ELISA	-	HCT-116 Cell line	-	Manri, 2016. ⁷⁷	27,917,441
UBC, H3F3A, HIST2H2AA3, AKT3, HSPA1B			GSE100206, GSE100063, GSE32323 (Bioinformatic Analysis)	-	29 patients, 49 control/tissue and Blood	-	Huang, 2018. ⁸¹	doi: 10.21037/tcr:2018.05.32
OATPIB3	Exosome Isolation kit (Thermo Fisher Scientific), PVDF filter and Differential centrifugation	TEM, Western blotting	qRT-PCR, Western blotting	-	HCT116, HT-29, and SW480 cell line, Blood of Mouse	-	Morio, 2018. ⁸⁰	29,491,222

Abbreviations: TEM, transmission electron microscopy; NTA, nanoparticle tracking analyzer; PEG, polyethylene glycol polymer; ELISA, enzyme-linked immunosorbent assay; SEM, scanning electron microscope; DLS, dynamic light scattering.

CD44 variant exon 9 (CD44v9)¹³⁶ were proposed as markers in a smaller number of articles. The heterogeneity of CTC markers led some researchers to focus on multi-marker panels in data mining as listed in Table 4.^{101,105,109,110,114,125,129,137–139}

Exosomes

Some prognosis markers have nearly the same functional patterns as molecular markers related to CRC. Studies have reported on colorectal exosome prognostic markers such as ALIX (ALG 2-interacting protein X),^{140,141} Hsp60,¹⁴² Hsp70,¹⁴¹ CEA,¹⁴³ ATP-binding cassette transporter G1 (ABCG1),¹⁴⁴ copine III (CPNE3),¹⁴⁵ and ΔNp73⁷⁰ in cancer patients.

Tauro et al, used multiple isolation methods to detect known exosome markers such as ALIX, TSG101, HSP70, and other specific and novel markers listed in Table 5.¹⁴¹ Chen et al, applied bioinformatic analysis for introduction of two panels and validated them.¹⁴⁶ Chiba et al, reported that exosomes derived from CRC cell lines contain mRNA, microRNA, and natural antisense RNA as listed in Table 5.⁷¹

Risk of bias (quality) assessment

All articles related to CTC (39 diagnosis-related and 57 prognosis-related) were assessed by NOS case-control guidelines as reported in Table S1. Of the diagnosis-related articles (40% of the total), 43%, 43%, and 14% scored 7, 6, and 5, respectively. Of the prognosis-related articles (60% of the total), 49%, 31.5%, 14%, and 1.5% scored 7, 6, 5, and 4, respectively; and 4% could not to be scored.

All articles related to exosomes (Five diagnosis-related and nine prognosis-related) were assessed by the NOS case-control guidelines in Table S2. Of the diagnosis-related articles (36% of total), 20%, 40%, and 40% scored 7, 6, and 5, respectively. Of the prognosis-related articles (64% of total), 67%, 22%, and 11% scored 7, 6, and 5, respectively. The 0–3 and 8–9 scores were not given out in these studies, so the NOS number varied from 4 to 7. About 99.3% of systematically imported articles scored over 5, 20% of the articles scored 5, and 79.7% scored 6 or 7.

Bioinformatics approach to systematic results

This systematic search identified 66 CTC gene markers for the diagnosis of CRC, 65 CTC gene markers for prognosis with repetition, 10 exosome gene markers for diagnosis of

CRC, and 35 exosome gene markers for prognosis as shown in Tables 2–5.

Protein–protein interaction network via STRING analysis

In the gene network, biochemical functions and identified pathways were obtained from gene expression data, and the results are shown in Figures 3 and 4 and supplementary Table S3 (online resources). Surprisingly, the cellular components of exosomes and CTC highlight extracellular space, region and exosome, plasma membrane, and cell junction. Their molecular function highlights cell adhesion molecule binding and protein binding. Biological processes included regulation of cellular component movement, assembly, localization, organization, and response to external stimuli.

Gene ontology

The results of EnrichR web tools in supplementary Table S4 (online resources) can be used to accurately understand the molecular pathways. The common pathways in biomarkers such as proteoglycans in cancer, focal adhesion pathways in cancer, integrin, Rap1, MAPK signaling pathways, angiogenesis, p53 pathways, and viral processes were similar and related to cancer.

Discussion

CRC is a common malignancy that often has a poor prognosis.¹⁴⁷ The tumor microenvironment contributes to its progression¹⁴⁸ and cross-talk between cancer cells and exosomes play a critical role in this dynamic network.¹⁴⁹ Their identification and characterization are important steps to improve understanding of cellular and molecular cancer metastasis. Tracking of tumor-associated molecular markers in the blood can be used to assess the presence of residual disease, recurrence, and resistance.¹⁵⁰ This systematic review highlights new trends and approaches in CRC biomarker discovery using CTC and exosomes.

Evidence related to diagnosis of CRC by means of CTC markers was addressed in 38 articles (Table 2) and 54 articles discussed prognosis of CRC using CTC markers (Table 4). Only 14 articles examined exosomes, five about diagnosis and nine about prognosis (Tables 3 and 5). Our results show that the most common markers introduced in CTCs were CEA (35 of 94 studies) and CK20 (33 of 94 studies), especially using quantitative real-time polymerase chain reaction. Most markers investigated for

Table 4 The biomarkers which worked for prognostic of CRC in circulating tumor cells

Biomarker	Technique of isolation/ detection of CTC	Technique of validation/related one	Related marker	Cutoff	Patients (number/ type)	Patient stage	Author/year	CTCs positive rate	PMID
CK20	RT-PCR	Colo205 cell spiking	-	2 mL	8 patients, 3 controls/Blood	III-IV	Funaki, 1997. ⁸⁴	36%	9,048,967
	RT-PCR	HT29 cell spiking	-	10 cells/2 mL	26 patients, 12 controls/Blood	B, C Dukes stage	Wyld, 1998. ⁸²	48%	9,645,353
	RT-PCR	-	-	10 mL	108 patients, 38 controls/Blood	I-IV	Hinz, 2012. ⁸³	25%	22,395,998
	qRT-PCR	-	-	5 mL	95 patients, 23 controls/Blood	I-IV	Samija, 2013 ⁸⁵	-	23,558,939
	RT-PCR	-	-	5 mL	95 patients, 23 controls/Blood	I-IV	Kust, 2016. ⁸⁶	-	27,144,776
	RT-PCR	Southern blot hybridization	-	7 mL	69 patients, 16 controls/Blood	I-IV	Piva, 2000. ⁸⁷	34%	11,096,345
	qRT-PCR	COLM-2 cell spiking	-	5-7 mL	99 patients, 20 controls/Blood	I-III	Ito, 2002. ⁸⁸	44.4%	12,065,095
	RT-PCR	-	-	5 mL	108 patients, 76 controls/ Blood	III-IV	Kanellos, 2006. ⁸⁹	11.1%	16,788,936
	Membrane arrays	RT-PCR	-	4 mL	141 patients/ Blood	II-III	Lu, 2011. ⁹⁰	33.3%	21,343,933
	CellSearch (EPCAM)	CellTracks® Analyzer II	CD45 ⁻	7.5 mL	20 patients/ Blood	I-III	Thorsteinsson, 2011. ⁹¹	5%	21,378,346

(Continued)

Table 4 (Continued).

Biomarker	Technique of isolation/ detection of CTC	Technique of validation/related one	Related marker	Cutoff	Patients (number/ type)	Patient stage	Author/year	CTCs positive rate	PMID
CK20, CEA.	RT-PCR	Colo320 cell spiking	–	10 mL	52 patients, 10 controls/Blood	I–IV	Yamaguchi, 2000. ⁹²	38.4%, 36.5%	10,862,196
	RT-PCR	HT29 or HT115 cell spiking	–	14 mL	33 patients, 70 controls/Blood	I–IV	Mathur, 2001. ⁹³	85%	11,417,979
	RT-PCR	LS 180 and C205; ATCC CL-187 and CCL-222 cell spiking	–	12 mL	39 patients, 13 controls (abnormal)/ Blood	I–III	Guller, 2002. ⁹⁴	28%	12,454,515
CK20, CK19	qRT-PCR	–	–	–	167 patients, 25 controls/ Blood	I–IV	linuma, 2006. ⁹⁵	22%	16,391,782
	qRT-PCR	HT29 cell spiking	CA19-9	10 mL	46 patients, 23 controls/Blood	I–IV	Liu, 2012. ⁹⁶	65.21%, 36.95%	22,414,974
	RT-PCR	Cell Spiking	K-ras, p53	20 mL	35 patients, 23 controls/Blood	I–IV	Nakamori, 1997. ⁹⁸	26%	9,378,009
CK20, CEA, CK19.	Nested RT-PCR	–	–	–	62 patients, 12 controls/Blood	I–IV	Huang, 2003. ⁹⁷	35.5%, 48.4%, 51.6%	12,684,893
	RT-PCR	–	CEA, CA199	5 mL	100 patients, 5 controls/Blood	I–III	Liu, 2017. ¹⁰³	–	28,418,917
CK20, GCC.	qRT-PCR	–	CEA	5 mL	69 patients, 23 controls/ Blood	I–III	Liu, 2013. ¹⁰⁴	–	23,150,200
	qRT-PCR	–	CK19, CK20	10 mL	735 patients/ Blood	B–C Dukes	linuma, 2011 ¹⁰⁶	24.52%	21,422,427

(Continued)

Table 4 (Continued).

Biomarker	Technique of isolation/ detection of CTC	Technique of validation/related one	Related marker	Cutoff	Patients (number/ type)	Patient stage	Author/year	CTCs positive rate	PMID
CK20, CEA, CK19, CD133	qRT-PCR	-	-	-	197 patients, 20 controls (benign diseases)/ Blood	B-C Dukes	Shimada, 2012. ¹⁰⁰	63%	22,267,181
CEA, EPCAM.	CellSearch, TRC method	DLD1 cell spiking	-	7.5 mL	67 patients/ Blood	Metastatic	Sato, 2012. ¹⁰⁸	9.0 ±23.4%, 64.3%	21,732,137
CK20, CEA, Survivin.	CD45 immuno magnetic beads + Ber-EP4 immuno magnetic beads	Lovo cell spiking, Real- time RT-PCR	-	10 mL	156 patients, 40 benign patients, 40 healthy/Blood	A-D Dukes	Shen, 2008. ¹¹¹	47.4%, 39.1%, 57.7%	18,845,519
CK20,CEA, ProthM,	Real-time RT-PCR	COLO 205, LS-174-T, CX 2, CX 94, HCT 116, HT 29, CaCo2 cell spiking	PBGD	10 mL	129 patients, 47 controls/ Blood	0-IV	Schuster, 2004. ¹¹²	88%, 86%; 17%	14,639,606
CK19, CK20, MUC1, MUC2.	Immunobead RT-PCR	SW48, SW480, HT29, LIM-2412, LIM-1215, LIM-2099, LIM-2405, LIM-1899, LIM-2463 and LIM-1863 cell spiking	-	20 mL	94 patients, 20 controls/Blood	A-D Dukes	Hardingham, 2000. ⁹⁹	20%	10,719,724
CK-19, CK-20, CEA, hTERT.	Membrane arrays	RT-PCR	-	4 mL	72 patients, 30 controls/Blood	I-IV	Wang, 2006. ¹¹³	66.7%, 52.8%, 72.2%, 69.4%	16,736,329
CGM2 (CEACAM7)	RT-PCR	CACO-2 and HT-29 cell spiking	-	20 mL	78 patients, 115 controls/ Blood	A-D Dukes	Douard, 2001. ¹¹⁶	59%	11,331,451

(Continued)

Table 4 (Continued).

Biomarker	Technique of isolation/ detection of CTC	Technique of validation/related one	Related marker	Cutoff	Patients (number/ type)	Patient stage	Author/year	CTCs positive rate	PMID
CEACAM5, CEACAM7	Immuno bead multiplex RT-PCR	-	HBB	20 mL	84 patients, 41 controls, 32 non CRC patients/Blood	I-IV	Douard, 2005. ¹¹⁵	55%, 45%	15,843,204
EPCAM, EGFR.	Immuno magnetic selection (IMS), multiplex RT-PCR	T84, HT29, SW948 and SW1116 cell spiking	CEA	5 mL	76 patients, 106 controls/Blood	I-IV	Zieglschmid, 2007. ¹⁰⁷	88%, 12%	17,649,779
EGFR	RT-PCR	Immunohistochemistry (IHC)	CEA (45%), CK-19 (27%)	5 mL	38 patients, 38 controls/Blood	B, C Dukes	De luca, 2000. ¹¹⁸	(73%)	10,778,975
	RT-PCR	-	-	3 mL	16 patients, 23 controls/Blood	Advanced-stage	Clarke, 2003. ¹¹⁹	12.5%	12,527,944
EGFR, HLM	RT-PCR	Northern blotting, HT11C cell spiking	-	3 mL	1 patients, 9 controls/Blood	Metastatic	Fournier, 1999. ¹²⁰	100%	10,446,991
EGFR, Tenascin C.		-	-	5 mL	41 patients, 40 controls/Blood	I-IV	Gazzaniga, 2005. ¹²¹	49%	16,211,285
PLS3	RT-PCR	Fluorescent immunocytochemistry	CEA	-	711 patients, 25 controls/Blood	Dukes A, B, C, and D	Yokobori, 2013. ¹²²	25%	23,378,342
PLS3, AQP5	RT-PCR	Fluorescent Immuno cytochemistry	CD45 (-)	10 mL	177 patients, 25 controls/Blood	Dukes A, B, C, and D	Sugimachi, 2014. ¹²³	-	24,217,791
	CD45 magnetic bead depletion	FISH Immunofluorescent	CEP823 and	7.5 mL	45 patients, 25 controls/Blood	I-IV	Shan, 2014 ¹³¹	55%	25,109,507
PKP3, AGR2.	Bioinformatic analysis and RT-PCR	Gp5d, LoVo, DLD1, LSS13, HT29, OJC4, OJC5, OJC6 cell spiking	S100A16, S100A6, LGALS4, CLDN3.	10 mL	21 patients and controls/Blood	III-IV	Valladares-Ayerbes, 2008. ¹²⁴	40%, 81.8%	18,801,625

(Continued)

Table 4 (Continued).

Biomarker	Technique of isolation/ detection of CTC	Technique of validation/related one	Related marker	Cutoff	Patients (number/ type)	Patient stage	Author/year	CTCs positive rate	PMID
AGR2, LGR5.	qRT-PCR	-	-	10 mL	54 patients, 19 controls/Blood	I-IV	Valladares- Ayerbes, 2012. ¹²⁶	84.9%, 90.5%	22,605,983
DCLK1, LGR5	qRT-PCR	-	-	10 mL	58 patients, 58 controls/Blood	I-IV	Mirzaei, 2015. ¹²⁷	63.7%	25,631,749
LGR5	mRNA ISH	-	EpCAM, CK8, CK18, CK19 Twist1, Vimentin, AKT2, SNAIL, CD45 (-)	5 mL	66 patients/ Blood	I-IV	Wang, 2018. ¹²⁸	86.4%	29,949,050
CK20, Tyrosinase, PSA.	RT-PCR, Nucleic acid sequence-based amplification (NASBA assay)	HT-29 cell spiking. In vitro cell assay	-	2 mL	12 patients, 8 controls/Blood	-	Burchill, 2002. ¹³²	-	11,857,020
MAGE-A	Electrochemiluminescence (ECL), RT-PCR	Sequencing analysis	MAGE-A, M-A1, M-A3, M-A12	10 mL	12 patients, 20 controls/Blood	I-IV	Miyashiro, 2001. ¹³³	29%	11,238,304
DVLI	Microarray and enzymatic chip array (WEnCA)	IHC	PSG2, TMPO, CD55, ELAVL4, PDX1, CTHRC1, CA9, TKI, UBE2C, FOXM1, PDE6D, PSAT1, CHRNBI,CEA, BMI CAP2, MMP13, OLFM4, PTTGI, MYC, MET, ENO2, MUC1, KRT19, BIRC5, HMGB1, KRT20, hTERT, GCNT1, NPM1	4 mL	214 patients/ Blood	I-III	Huang, 2013. ¹³⁴	55%	24,129,181

(Continued)

Table 4 (Continued).

Biomarker	Technique of isolation/ detection of CTC	Technique of validation/related one	Related marker	Cutoff	Patients (number/ type)	Patient stage	Author/year	CTCs positive rate	PMID
CD47	Cellsearch	-	EPCAM, CD45 (-)	20-30 mL	72 patients/ Blood	I-IV	Steinert, 2014. ¹³⁵	14%	24,599,131
CD44v9	OncoQuick	qRT-PCR	-	20 mL	150 patients, 15 controls/ Blood	I-IV	Katoh, 2015. ¹³⁶	40%	25,550,556
CK19, AGR2, CK8, CK9.	CellSearchin	-	TSPAN8, LAD1, CK20, IGFBP5, GPX2, FABP1, SI100A1,6 CK8, PRSS8, CDX1, CEACAM5, AKR1C3, RARRES2, REG1A, IGFBP4, CD44, TRIM2, CXCL1, SATB2, NQO1, CK19, MAPT, IGFBP3, COL4A1, FCGBP, SLC6A8, CDH5, CDH17, EGFR, S100P, HOXB9, CDH1, MACROD1,	30 mL	142 patients, 30 controls/ Blood	Metastatic colorectal cancer	Mostert, 2015. ¹²⁵	66%	25,655,581
CK20, CEA, AGR2, MGB2, DLL4, EphA2, Her3, PDGFR α	qRT-PCR	-	-	7.5 mL	24 patients/ Blood	III-IV	Bao, 2013. ¹³⁷	59%	23,990,866
CK-20, CEA, CK-19, hTERT, TM4SF3, CK19.	Membrane arrays	RT-PCR	-	4 mL	157 patients, 80 controls/ Blood	I-IV	Wang, 2007. ¹¹⁴	50%	17,406,027
	RT-PCR	-	CEA, CK20, TAGSTD1,	10 mL	28 patients, 19 controls/Blood	I-IV	Xi, 2007. ¹⁰¹	96.4%	17,525,108

(Continued)

Table 4 (Continued).

Biomarker	Technique of isolation/ detection of CTC	Technique of validation/related one	Related marker	Cutoff	Patients (number/ type)	Patient stage	Author/year	CTCs positive rate	PMID
DCLK1, LGR5, EpCAM, CK8, CK9, CK19, Vimentin, Twist	qRT-PCR, IHC	-	-	10 mL	78 patients and controls/Blood	I-IV	Mirzaei, 2016. ¹⁰⁹		26,383,518
	CanPatrol CTC enrichment	(ISH) assay	-	5 mL	38 patients, 27 controls/Blood	I-IV	Wu, 2015. ¹¹⁰	67%	25,909,322
PSG2, ELAVL4, TK1, UBE2C, PDE6D, PSAT1, CHRNBI, BMII, CAP2, MMP13, OLFM4, PTTG1, MYC, MET, MUC1, HMGB1, hTERT, BIRC5,	Enzyme immunoassay test kit	-	CEA	3 mL	298 patients/ Blood	I-III	Chang, 2016. ¹³⁸	-	27,701,415
PI3K α , Akt-2, Twist1 ALDH1	antiCD45 specific antibodies (Dynabeads, Invitrogen)	qRT-PCR and multiplex- PCR	-	8 mL	78 patients, 20 controls/Blood	I-IV	Ning, 2018. ¹²⁹	55%	27,503,579
CK19, MUC1, CD44, CD133, ALDH1	CD45 Human MicroBeads (Miltenyi Biotec), enrichment of cyokeratin (Miltenyi Biotec)	Flowcytometry, CellSearch, qRT-PCR, Cytomorphology, PC3, MDA-MB-231 and SKBR3 cell spiking	-	7.5 mL	63 patients, 40 controls/Blood	I-III	Bahmassy, 2019. ¹³⁹	(55.6%), (46.0%), (44.4%), (41.3%) (41.3%)	30,578,762
CEACAM5, CK19, AGR2, LGR5	Inertial microfluidics combined with droplet digital PCR	qRT-PCR, HT-29 and LoVo cell spiking	-	9 mL	Patients and controls/Blood	Advanced	Methai, 2019. ¹⁶⁴	-	31,304,099

Table 5 The biomarkers which worked for prognostic of CRC in exosome

Biomarker	Technique of exosome isolation	Technique of exosome validation	Technique of markers detection or validation	Related marker	Patients (number/type)	Patient stage	Author/year:	PMID
Alix	–	–	GSE37364, GSE10714, GSE4183, GSE18105, GSE4107, GSE9348, GSE8671, IHC	PGK1, PKM1, ANXA5, ENO1, HSP90AB1, MSN	72 patients, 27 controls, and 98 sample (literature bioinformatic)	I–IV	Valcz G, 2016. ¹⁴⁰	27,150,162
ΔNp73	UC-Exo* centrifugation 120,000 and PVDF filter	Acetylcholinesterase activity, flow cytometry quantification, transmission electron microscopy, Western blot analysis	qRT-PCR, Cell culture and transfection	CEA	69 patients and control tissues, HCT 116 cell lines.	I–IV	Soldevilla, 2013. ⁷⁰	24,067,531
Hsp60	UC-Exo	TEM AChEase: acetylcholinesterase assay, Western blot	IHC, ELISA, immunogold electron microscopy	Hsc70, Alix, CD57, CD68	57 patients and control tissues, 2 blood sample	I–III	Campanela, 2015. ¹⁴³	26,060,090
RPL13A, HMBS, TBP	UC-Exo	BCA, Western blotting	qRT-PCR	miR-21, miR-34, miR-143, miR-192, miR-215, miR-22	WIDr, HCT-15, SW480 cell lines	–	Chiba, 2012. ⁷¹	22,895,844
TSAP6, CEA	UC-Exo	Flow Cytometry, Western blotting	qRT-PCR, IHC, levels of circulating exosomes in plasma	–	91 patients, 12 controls/tissue and blood	I–IV	Silva, 2012. ¹⁴²	22,420,032
Alix, TSG101, HSP70, CD9, CD81, ESCRT-III, VPS32/CHMP4C, VAMP2, EFNB1, EFNB2, EPHA2–8, EPHB1–4, CTNINB1, TNJK, CRK, GRB2	UC-Exo, DG-Exo: OptiPrep™ density gradient exosome, IAC-Exo: EpCAM immunoaffinity capture	Western blotting, EM: Electron microscopy	GeLC-MS/MS (protein profiling)	–	LIM1863 cell line	–	Tauro, 2012. ¹⁴¹	22,285,593

(Continued)

Table 5 (Continued).

Biomarker	Technique of exosome isolation	Technique of exosome validation	Technique of markers detection or validation	Related marker	Patients (number/type)	Patient stage	Author/year:	PMID
BCL7C, EEF1G, RAB13, RSP3, TPT1, SCARB1, SCD	UC-Exo	A33-Exos and EpCAM-Exos (Dynabeads™), TEM, Western blot	SRP02205476, SRP029880 (Microarray)	-	LIM1863 cell line	-	Chen, 2016. ¹⁴⁶	27,917,920
CPNE3	UC-Exo	TEM, NTA, Western blotting		CEA	92 patients, 32 controls/Blood	Sensitivity of 67.5% and a specificity of 84.4%	Sun, 2019. ¹⁴⁵	30,078,189
ABCG1	Polymer-based precipitation method	TEM, Zetasizer Nano ZSP, Western blotting.	qRT-PCR, IHC, GSE1753749	-	Murine cell line		Namba, 2018. ¹⁴⁴	30,364,132

Abbreviation: UC-Exo, ultracentrifugation exosome.

exosomes, in addition to CD9, CD81, ALIX, and TSG101, were including EPCAM and HSP, especially using ultracentrifugation. Comparison of 131 CTC markers and 45 exosomes markers showed only three common markers (CEA, CD9, and EPCAM) on the gene list as diagnostic and prognostic biomarkers.

A half-century-old investigation of CEA in CRC was the first step in the identification of a much larger family of 12 CEACAMs.^{151,152} Gene encoding CEA is a member of the immunoglobulin supergene family¹⁵³ that plays a role in cell adhesion and tumor progression,¹⁵⁴ even in protecting the colon from microbial infection.¹⁵⁵ CEA is involved in the metastatic cascade process through positive regulation of cell migration and invasion;^{156–158} thus, the monitoring of CEA as a cost-effective and frequent indicator of recurrence of CRC has been investigated for years.¹⁵⁹

Integrin on tumor exosomes may play an important role in modulating organ-specific metastasis in cancer progression. CD9 is a member of the tetraspanin superfamily commonly detected in all types of exosomes involved in pathophysiologic processes such as cellular adhesion, growth, motility, cell–cell fusion, signal transduction, and tumor metastasis.¹⁶⁰

EPCAM is a membranous glycoprotein that is a CSC marker in tumor cells in the basolateral surface of most normal epithelial tissue and its role is to connect cells by means of calcium. The expression of this marker increases in benign and malignant tumors that arise from epithelial tissue.¹⁶¹ The first step in metastasis is the separation of cancerous cells from primary tumors. CEA, CD9, and EPCAM are closely correlated with tumor progression as a poor prognostic factor and is required for the survival of CTCs in some cancers.¹⁶² Taken together, it appears that the signature of the CTC and exosome biomarkers are similar and follow common pathways; thus, exosomes can be applied as alternative tools for guiding better molecular pathology in the fight against cancer.

Precision medicine is changing clinical practice by tailoring treatment based on an individual's genetic makeup. Recent studies have shown that CTC and circulating tumor DNA provide complementary information and the use of both approaches to study tumor metastasis is warranted.¹⁶³ CTC and exosomes can pave a path as diagnostic and prognostic procedures using the heterogeneity of tumor sites as they are released into the blood from live origins and can be

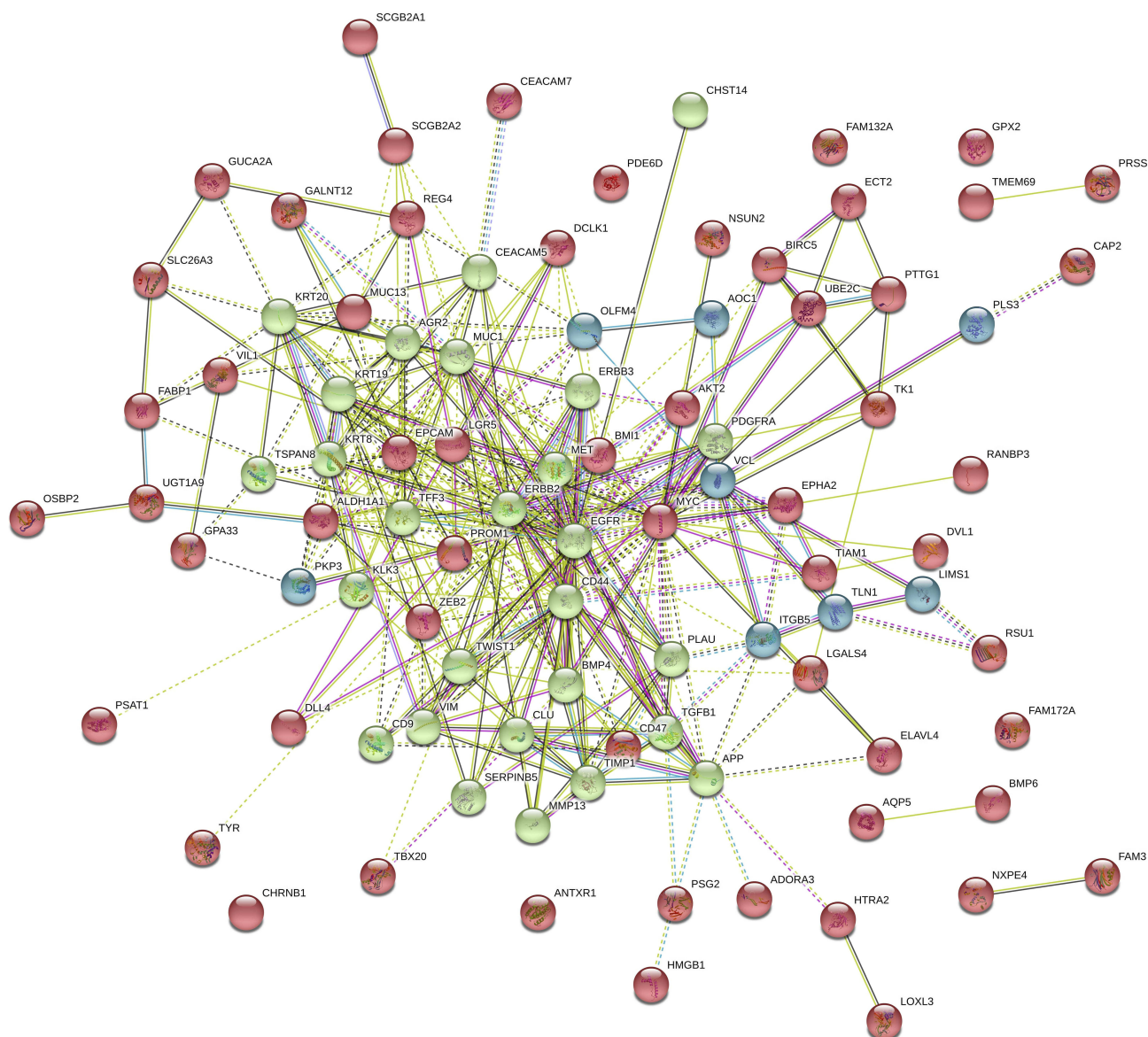


Figure 3 Network and enrichment analysis visualization. Combined screenshots from the STRING website, showing results obtained upon entering a set of 131 proteins suspected to be involved in circulating tumor cell markers. According on kmeans clustering has been selected, the corresponding protein nodes in three categories automatically highlighted in colors.

analyzed at the DNA, RNA, and protein levels. It is undeniable that more investigation is needed to compare them, especially for cancer patients.

Various CTC isolating techniques each have its own advantages and disadvantages as to their CTC capture capacity and subgrouping of CTCs based on various markers. Similar problems also exist for exosomes, with a lack of a proven rapid and high-yield approach for extracting exosomes for downstream analysis.¹⁶⁴ Microfluidic devices and bioinformatics analysis might play an important role in solving the current shortcomings of the liquid biopsy

concept. Microfluidics, by using inertial focusing/hydrodynamics (laminar flow in microchannels) and applying spiral, acoustic, electrophoretic, and electromagnetic features passively separate CTCs and exosomes from the other background cells.¹⁶⁵ Immobilizing specific antibodies either on micro-posts or in a herringbone design against their marker might be useful; it is easy to explore and yields quantitative readouts with high sensitivity, low cost, and minimal sample handling. Finally, although the potential clinical utility of these techniques is clear, more effort is needed to use the full potential of liquid biopsy in clinical settings.¹⁶⁶

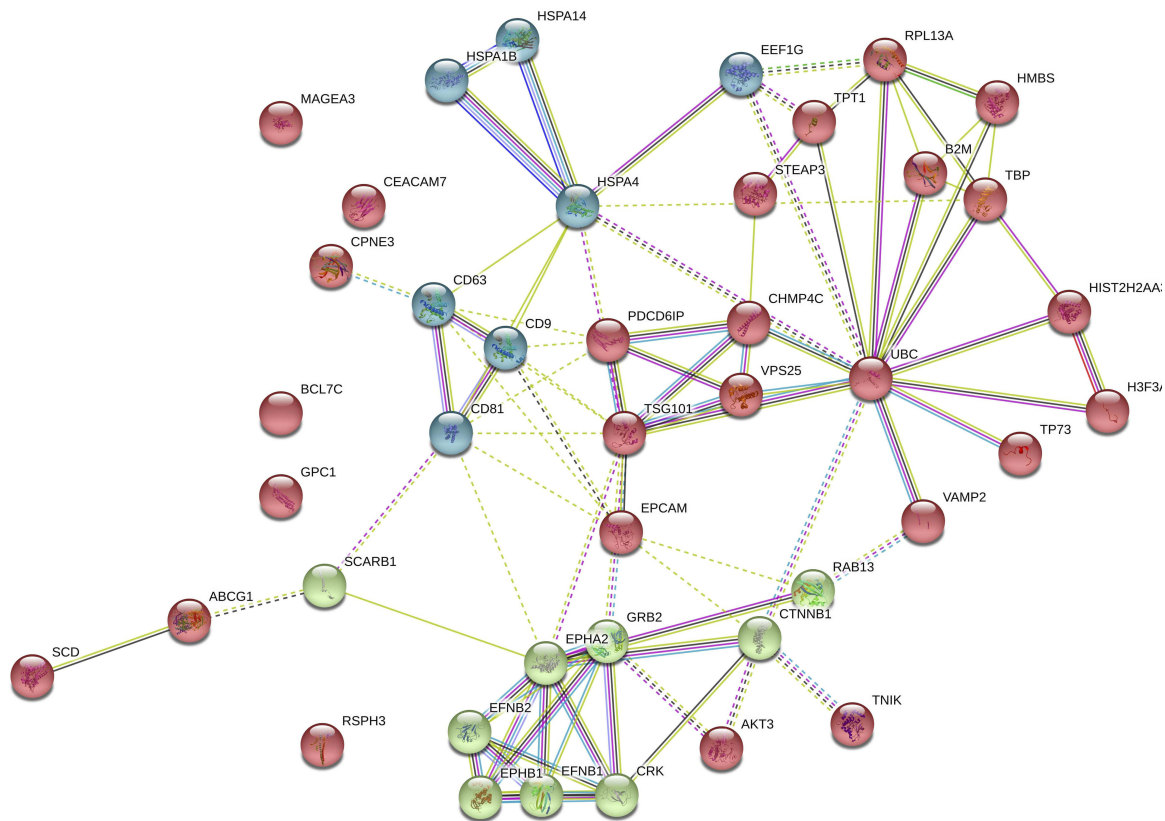


Figure 4 Network and enrichment analysis visualization. Combined screenshots from the STRING website, showing results obtained upon entering a set of 45 proteins suspected to be involved in Exosome markers. According on kmeans clustering has been selected, the corresponding protein nodes in three categories automatically highlighted in colors.

Future perspectives

Currently, isolation and purification of tumor-derived exosome in a worm bag of EVs is technically cumbersome and also isolation of CTCs has its own limitations. Therefore, combined use of these two biomarkers together as a liquid biopsy requires large-scale clinical trials. Microfluidic devices and bioinformatics analysis might play an important role in solving the current shortcomings of the liquid biopsy. Additionally, cross talking of CTCs and tumor-derived exosomes in a tumor microenvironment should become a heated question in exploring the premetastatic niche. As such, more research is needed on CTCs and exosome's overlapping molecular pathways to determine more effective biomarker signatures of CRC, especially in the metastatic form.

Acknowledgments

Systematic Review Network, Vice-Chancellor for Research and Technology, Iran University of Medical Sciences (Grant # 97-4-37-13921), funded this research.

We would also like to thank the Royan Stem Cell Technology Company and our colleagues from both centers who provided insight and expertise that greatly assisted the research.

Disclosure

The authors report no conflicts of interest in this work.

References

1. Torre LA, Bray F, Siegel RL, Ferlay J, Lortet-Tieulent J, Jemal A. Global cancer statistics, 2012. *CA Cancer J Clin.* 2015;65(2):87–108. doi:10.3322/caac.21262
2. Siegel RL, Miller KD, Jemal A. Cancer statistics, 2015. *CA Cancer J Clin.* 2015;65(1):5–29. doi:10.3322/caac.21254
3. Punt CJ, Koopman M, Vermeulen L. From tumour heterogeneity to advances in precision treatment of colorectal cancer. *Nat Rev Clin Oncol.* 2017;14(4):235. doi:10.1038/nrclinonc.2016.171
4. Zhai Z, Yu X, Yang B, et al. Colorectal cancer heterogeneity and targeted therapy: clinical implications, challenges and solutions for treatment resistance. Paper presented at: *Semin Cell Dev Biol*; 2017;64:107–115. doi:10.1016/j.semdb.2016.08.033
5. Bailey JR, Aggarwal A, Imperiale TF. Colorectal cancer screening: stool DNA and other noninvasive modalities. *Gut Liver.* 2016;10(2):204–211. doi:10.5009/gnl15420

6. Heichman KA. Blood-based testing for colorectal cancer screening. *Mol Diagn Ther.* 2014;18(2):127–135. doi:10.1007/s40291-013-0074-z
7. Hench IB, Hench J, Tolnay M. Liquid biopsy in clinical management of breast, lung, and colorectal cancer. *Front Med.* 2018;5:9. doi:10.3389/fmed.2018.00009
8. Lopez A, Harada K, Mizrak Kaya D, Dong X, Song S, Ajani JA. Liquid biopsies in gastrointestinal malignancies: when is the big day? *Expert Rev Anticancer Ther.* 2018;18(1):19–38. doi:10.1080/14737140.2018.1403320
9. Ryan E, Creagh E. Emerging methods in colorectal cancer screening. *BJS.* 2018;105(2):e16–e18. doi:10.1002/bjs.10650
10. Hauptman N, Glavac D. Colorectal cancer blood-based biomarkers. *Gastroenterol Res Pract.* 2017;2017:2195361. doi:10.1155/2017/2195361
11. Shao H, Chung J, Issadore D. Diagnostic technologies for circulating tumour cells and exosomes. *Biosci Rep.* 2015;36(1):e00292. doi:10.1042/BSR20150180
12. Hessvik NP, Llorente A. Current knowledge on exosome biogenesis and release. *Cell Mol Life Sci.* 2018;75(2):193–208. doi:10.1007/s00018-017-2595-9
13. Thorsteinsson M, Jess P. The clinical significance of circulating tumor cells in non-metastatic colorectal cancer—a review. *Eur J Surg Oncol.* 2011;37(6):459–465. doi:10.1016/j.ejso.2011.01.025
14. Xu L, Shamash J, Lu Y-J. Circulating tumor cells: a window to understand cancer metastasis, monitor and fight against cancers. *J Can Res Updates.* 2015;4(1):13–29. doi:10.6000/1929-2279.2015.04.01.2
15. Satelli A, Mitra A, Brownlee Z, et al. Epithelial–mesenchymal transitioned circulating tumor cells capture for detecting tumor progression. *Clin Cancer Res.* 2015;21(4):899–906. doi:10.1158/1078-0432.CCR-14-0894
16. Cohen SJ, Punt CJ, Iannotti N, et al. Relationship of circulating tumor cells to tumor response, progression-free survival, and overall survival in patients with metastatic colorectal cancer. *J Clin Oncol.* 2008;26(19):3213–3221. doi:10.1200/JCO.2007.15.8923
17. Riggi N, Aguet M, Stamenkovic I. Cancer metastasis: a reappraisal of its underlying mechanisms and their relevance to treatment. *Annu Rev Pathol.* 2018;13:117–140. doi:10.1146/annurev-pathol-020117-044127
18. Pan BT, Johnstone RM. Fate of the transferrin receptor during maturation of sheep reticulocytes in vitro: selective externalization of the receptor. *Cell.* 1983;33(3):967–978. doi:10.1016/0092-8674(83)90040-5
19. Li P, Kaslan M, Lee SH, Yao J, Gao Z. Progress in exosome isolation techniques. *Theranostics.* 2017;7(3):789–804. doi:10.7150/thno.18133
20. Soung YH, Nguyen T, Cao H, Lee J, Chung J. Emerging roles of exosomes in cancer invasion and metastasis. *BMB Rep.* 2016;49(1):18–25. doi:10.5483/BMBRep.2016.49.1.239
21. Traci Pawlowski DS, Tinder T, Kimbrough J, et al. Circulating exosomes may provide an alternate platform to monitor disease progression compared to circulating tumor cells. *J Clin Oncol.* 2010;28:10580–10580. doi:10.1200/jco.2010.28.15_suppl.10580
22. Moher D, Liberati A, Tetzlaff J, Altman DG, Group P. Preferred reporting items for systematic reviews and meta-analyses: the PRISMA statement. *PLoS Med.* 2009;6(7):e1000097. doi:10.1371/journal.pmed.1000097
23. Stang A. Critical evaluation of the Newcastle-Ottawa scale for the assessment of the quality of nonrandomized studies in meta-analyses. *Eur J Epidemiol.* 2010;25(9):603–605. doi:10.1007/s10654-010-9491-z
24. Harris MA, Clark J, Ireland A, et al. The Gene Ontology (GO) database and informatics resource. *Nucleic Acids Res.* 2004;32(Database issue):D258–D261. doi:10.1093/nar/ghk036
25. Zhang XW, Yang HY, Fan P, Yang L, Chen GY. Detection of micrometastasis in peripheral blood by multi-sampling in patients with colorectal cancer. *World J Gastroenterol.* 2005;11(3):436–438. doi:10.3748/wjg.v11.i3.436
26. Katsumata K, Sumi T, Mori Y, Hisada M, Tsuchida A, Aoki T. Detection and evaluation of epithelial cells in the blood of colon cancer patients using RT-PCR. *Int J Clin Oncol.* 2006;11(5):385–389. doi:10.1007/s10147-006-0590-5
27. Soeth E, Vogel I, Roder C, et al. Comparative analysis of bone marrow and venous blood isolates from gastrointestinal cancer patients for the detection of disseminated tumor cells using reverse transcription PCR. *Cancer Res.* 1997;57(15):3106–3110.
28. Soeth E, Roder C, Juhl H, Kruger U, Kremer B, Kalthoff H. The detection of disseminated tumor cells in bone marrow from colorectal-cancer patients by a cytokeratin-20-specific nested reverse-transcriptase-polymerase-chain reaction is related to the stage of disease. *Int J Cancer.* 1996;69(4):278–282. doi:10.1002/(SICI)1097-0215(19960822)69:4<278::AID-IJC7>3.0.CO;2-U
29. Vlems FA, Diepstra JH, Cornelissen IM, et al. Limitations of cytokeratin 20 RT-PCR to detect disseminated tumour cells in blood and bone marrow of patients with colorectal cancer: expression in controls and downregulation in tumour tissue. *Mol Pathol.* 2002;55(3):156–163. doi:10.1136/mp.55.3.156
30. Guo J, Xiao B, Jin Z, et al. Detection of cytokeratin 20 mRNA in the peripheral blood of patients with colorectal cancer by immunomagnetic bead enrichment and real-time reverse transcriptase-polymerase chain reaction. *J Gastroenterol Hepatol.* 2005;20(8):1279–1284. doi:10.1111/j.1440-1746.2005.03894.x
31. Jonas S, Windeatt S, Fordy C, Allen-Mersh TG. Identification of carcinoembryonic antigen-producing cells circulating in the blood of patients with colorectal carcinoma by reverse transcriptase polymerase chain reaction. *Gut.* 1996;39(5):717–721. doi:10.1136/gut.39.5.717
32. Castells A, Boix L, Bessa X, Gargallo L, Pique JM. Detection of colonic cells in peripheral blood of colorectal cancer patients by means of reverse transcriptase and polymerase chain reaction. *Br J Cancer.* 1998;78(10):1368–1372. doi:10.1038/bjc.1998.686
33. Noh YH, Im G, Ku JH, Lee YS, Ahn MJ. Detection of tumor cell contamination in peripheral blood by RT-PCR in gastrointestinal cancer patients. *J Korean Med Sci.* 1999;14(6):623–628. doi:10.3346/jkms.1999.14.6.623
34. Guadagni F, Kantor J, Aloe S, et al. Detection of blood-borne cells in colorectal cancer patients by nested reverse transcription-polymerase chain reaction for carcinoembryonic antigen messenger RNA: longitudinal analyses and demonstration of its potential importance as an adjunct to multiple serum markers. *Cancer Res.* 2001;61(6):2523–2532.
35. Hampton R, Walker M, Marshall J, Juhl H. Differential expression of carcinoembryonic antigen (CEA) splice variants in whole blood of colon cancer patients and healthy volunteers: implication for the detection of circulating colon cancer cells. *Oncogene.* 2002;21(51):7817–7823. doi:10.1038/sj.onc.1205906
36. Guo J, Xiao B, Zhang X, et al. Combined use of positive and negative immunomagnetic isolation followed by real-time RT-PCR for detection of the circulating tumor cells in patients with colorectal cancers. *J Mol Med (Berl).* 2004;82(11):768–774. doi:10.1007/s00109-004-0590-8
37. Silva JM, Rodriguez R, Garcia JM, et al. Detection of epithelial tumour RNA in the plasma of colon cancer patients is associated with advanced stages and circulating tumour cells. *Gut.* 2002;50(4):530–534. doi:10.1136/gut.50.4.530
38. Wong IH, Yeo W, Chan AT, Johnson PJ. Quantitative relationship of the circulating tumor burden assessed by reverse transcription-polymerase chain reaction for cytokeratin 19 mRNA in peripheral blood of colorectal cancer patients with Dukes' stage, serum carcinoembryonic antigen level and tumor progression. *Cancer Lett.* 2001;162(1):65–73. doi:10.1016/s0304-3835(00)00630-3

39. Cohen SJ, Alpaugh RK, Gross S, et al. Isolation and characterization of circulating tumor cells in patients with metastatic colorectal cancer. *Clin Colorectal Cancer*. 2006;6(2):125–132. doi:10.3816/CCC.2006.n.029
40. Gogoi P, Sepehri S, Zhou Y, et al. Development of an automated and sensitive microfluidic device for capturing and characterizing Circulating Tumor Cells (CTCs) from clinical blood samples. *PLoS One*. 2016;11(1):e0147400. doi:10.1371/journal.pone.0147400
41. Mourtzikou A, Kroupis C, Poupouridou N, et al. Molecular detection of circulating tumor cells in peripheral blood of colon cancer patients. *J Gastroenterol Hepatol Res*. 2012;1(5):74–79.
42. van Zijl F, Krupitza G, Mikulits W. Initial steps of metastasis: cell invasion and endothelial transmigration. *Mutat Res*. 2011;728(1–2):23–34. doi:10.1016/j.mrrev.2011.05.002
43. Nagrath S, Sequist LV, Maheswaran S, et al. Isolation of rare circulating tumour cells in cancer patients by microchip technology. *Nature*. 2007;450(7173):1235–1239. doi:10.1038/nature06385
44. Raeisossadati R, Farshchian M, Ganji A, et al. Quantitative analysis of TEM-8 and CEA tumor markers indicating free tumor cells in the peripheral blood of colorectal cancer patients. *Int J Colorectal Dis*. 2011;26(10):1265–1270. doi:10.1007/s00384-011-1230-8
45. Wong LS, Cantrill JE, Odogwu S, Morris AG, Fraser IA. Detection of circulating tumour cells and nodal metastasis by reverse transcriptase-polymerase chain reaction technique. *Br J Surg*. 1997;84(6):834–839.
46. Fava TA, Desnoyers R, Schulz S, et al. Ectopic expression of guanylyl cyclase C in CD34+ progenitor cells in peripheral blood. *J Clin Oncol*. 2001;19(19):3951–3959. doi:10.1200/JCO.2001.19.3951
47. Tien YW, Chang KJ, Jeng YM, et al. Tumor angiogenesis and its possible role in intravasation of colorectal epithelial cells. *Clin Cancer Res*. 2001;7(6):1627–1632.
48. Tien YW, Jeng YM, Hu RH, Chang KJ, Hsu SM, Lee PH. Intravasation-related metastatic factors in colorectal cancer. *Tumour Biol*. 2004;25(1–2):48–55. doi:10.1159/000077723
49. Solmi R, De Sanctis P, Zucchini C, et al. Search for epithelial-specific mRNAs in peripheral blood of patients with colon cancer by RT-PCR. *Int J Oncol*. 2004;25(4):1049–1056. doi:10.3892/ijo.25.4.1049
50. Yeh CS, Wang JY, Wu CH, et al. Molecular detection of circulating cancer cells in the peripheral blood of patients with colorectal cancer by using membrane array with a multiple mRNA marker panel. *Int J Oncol*. 2006;28(2):411–420. doi:10.3892/ijo.28.2.411
51. Solmi R, Ugolini G, Rosati G, et al. Microarray-based identification and RT-PCR test screening for epithelial-specific mRNAs in peripheral blood of patients with colon cancer. *BMC Cancer*. 2006;6:250. doi:10.1186/1471-2407-6-250
52. Lauriola M, Ugolini G, Rosati G, et al. Identification by a Digital Gene Expression Displayer (DGED) and test by RT-PCR analysis of new mRNA candidate markers for colorectal cancer in peripheral blood. *Int J Oncol*. 2010;37(2):519–525. doi:10.3892/ijo_00000701
53. Barbazan J, Alonso-Alconada L, Muinelo-Romay L, et al. Molecular characterization of circulating tumor cells in human metastatic colorectal cancer. *PLoS One*. 2012;7(7):e40476. doi:10.1371/journal.pone.0040476
54. Barbazan J, Vieito M, Abalo A, et al. A logistic model for the detection of circulating tumour cells in human metastatic colorectal cancer. *J Cell Mol Med*. 2012;16(10):2342–2349. doi:10.1111/j.1582-4934.2012.01544.x
55. Alonso-Alconada L, Barbazan J, Candamio S, et al. PrediCTC, liquid biopsy in precision oncology: a technology transfer experience in the Spanish health system. *Clin Transl Oncol*. 2018;20(5):630–638. doi:10.1007/s12094-017-1760-9
56. Barbazan J, Muinelo-Romay L, Vieito M, et al. A multimarker panel for circulating tumor cells detection predicts patient outcome and therapy response in metastatic colorectal cancer. *Int J Cancer*. 2014;135(11):2633–2643. doi:10.1002/ijc.28910
57. Findeisen P, Rockel M, Nees M, et al. Systematic identification and validation of candidate genes for detection of circulating tumor cells in peripheral blood specimens of colorectal cancer patients. *Int J Oncol*. 2008;33(5):1001–1010. doi:10.3892/ijo_00000088
58. Vaiopoulos AG, Kostakis ID, Gkioka E, et al. Detection of circulating tumor cells in colorectal and gastric cancer using a multiplex PCR assay. *Anticancer Res*. 2014;34(6):3083–3092.
59. Teama SH, Agwa SHA. Detection of circulating tumor cells by nested RT-PCR targeting EGFR/CEA/CK20mRNAs in colorectal carcinoma patients. *Egypt J Med Human Genet*. 2010;11(2):173–180. doi:10.1016/j.ejmhg.2009.10.001
60. Lankiewicz S, Rother E, Zimmermann S, Hollmann C, Korangy F, Gretten TF. Tumour-associated transcripts and EGFR deletion variants in colorectal cancer in primary tumour, metastases and circulating tumour cells. *Cell Oncol*. 2008;30(6):463–471.
61. Chen CJ, Sung WW, Chen HC, et al. Early assessment of colorectal cancer by quantifying circulating tumor cells in peripheral blood: ECT2 in diagnosis of colorectal cancer. *Int J Mol Sci*. 2017;18(4):E743. doi:10.3390/ijms18040743
62. Cui CH, Chen RH, Zhai DY, Xie L, Qi J, Yu JL. Detection of FAM172A expressed in circulating tumor cells is a feasible method to predict high-risk subgroups of colorectal cancer. *Tumour Biol*. 2017;39(6):1010428317699126. doi:10.1177/1010428317699126
63. Gessi S, Cattabriga E, Avitabile A, et al. Elevated expression of A3 adenosine receptors in human colorectal cancer is reflected in peripheral blood cells. *Clin Cancer Res*. 2004;10(17):5895–5901. doi:10.1158/1078-0432.CCR-1134-03
64. Rodia MT, Ugolini G, Mattei G, et al. Systematic large-scale meta-analysis identifies a panel of two mRNAs as blood biomarkers for colorectal cancer detection. *Oncotarget*. 2016;7(21):30295–30306. doi:10.18632/oncotarget.8108
65. Ogata-Kawata H, Izumiya M, Kurioka D, et al. Circulating exosomal microRNAs as biomarkers of colon cancer. *PLoS One*. 2014;9(4). doi:10.1371/journal.pone.0092921
66. Zhang J, Raju GS, Chang DW, Lin SH, Chen Z, Wu X. Global and targeted circulating microRNA profiling of colorectal adenoma and colorectal cancer. *Cancer*. 2018;124(4):785–796. doi:10.1002/ncr.31062
67. Ostenfeld MS, Jensen SG, Jeppesen DK, et al. miRNA profiling of circulating EpCAM+ extracellular vesicles: promising biomarkers of colorectal cancer. *J Extracell Vesicles*. 2016;5(1). doi:10.3402/jev.v5.31488
68. Rapado-Gonzalez O, Alvarez-Castro A, Lopez-Lopez R, Iglesias-Canle J, Suarez-Cunqueiro MM, Muinelo-Romay L. Circulating microRNAs as promising biomarkers in colorectal cancer. *Cancers*. 2019;11(7). doi:10.3390/cancers11070898
69. Hao YX, Li YM, Ye M, et al. KRAS and BRAF mutations in serum exosomes from patients with colorectal cancer in a Chinese population. *Oncol Lett*. 2017;13(5):3608–3616. doi:10.3892/ol.2017.5889
70. Soldevilla B, Rodriguez M, Millán CS, et al. Tumor-derived exosomes are enriched in ΔNp73, which promotes oncogenic potential in acceptor cells and correlates with patient survival. *Hum Mol Genet*. 2014;23(2):467–478. doi:10.1093/hmg/ddt437
71. Chiba M, Kimura M, Asari S. Exosomes secreted from human colorectal cancer cell lines contain mRNAs, microRNAs and natural antisense RNAs, that can transfer into the human hepatoma HepG2 and lung cancer A549 cell lines. *Oncol Rep*. 2012;28(5):1551–1558. doi:10.3892/or.2012.1967
72. Barbagallo C, Brex D, Caponnetto A, et al. LncRNA UCA1, upregulated in CRC biopsies and downregulated in serum exosomes, controls mRNA expression by RNA-RNA interactions. *Mol Ther*. 2018;12:229–241. doi:10.1016/j.omtn.2018.05.009

73. Li Y, Zhao J, Yu S, et al. Extracellular vesicles long RNA sequencing reveals abundant mRNA, circRNA, and lncRNA in human blood as potential biomarkers for cancer diagnosis. *Clin Chem*. 2019;65(6):798–808. doi:10.1373/clinchem.2018.301291
74. Wang L, Duan W, Yan S, Xie Y, Wang C. Circulating long non-coding RNA colon cancer-associated transcript 2 protected by exosome as a potential biomarker for colorectal cancer. *Biomed Pharmacother*. 2019;113. doi:10.1016/j.biopha.2019.108758
75. Liu H, Ye D, Chen A, et al. A pilot study of new promising non-coding RNA diagnostic biomarkers for early-stage colorectal cancers. *Clin Chem Lab Med*. 2019;57(7):1073–1083. doi:10.1515/cclm-2019-0052
76. Nakai W, Yoshida T, Diez D, et al. A novel affinity-based method for the isolation of highly purified extracellular vesicles. *Sci Rep*. 2016;6:33935. doi:10.1038/srep33935
77. Manri C, Yokoi T, Nishida H. Size-selective harvesting of extracellular vesicles for strategic analyses towards tumor diagnoses. *Appl Biochem Biotechnol*. 2017;182(2):609–623. doi:10.1007/s12010-016-2348-5
78. Li J, Chen Y, Guo X, et al. GPC1 exosome and its regulatory miRNAs are specific markers for the detection and target therapy of colorectal cancer. *J Cell Mol Med*. 2017;21(5):838–847. doi:10.1111/jcmm.12941
79. Dong L, Lin W, Qi P, et al. Circulating long RNAs in serum extracellular vesicles: their characterization and potential application as biomarkers for diagnosis of colorectal cancer. *Cancer Epidemiol Biomarkers Prev*. 2016;25(7):1158–1166. doi:10.1158/1055-9965.EPI-16-0006
80. Morio H, Sun Y, Harada M, et al. Cancer-Type OATP1B3 mRNA in extracellular vesicles as a promising candidate for a serum-based colorectal cancer biomarker. *Biol Pharm Bull*. 2018;41(3):445–449. doi:10.1248/bpb.b17-00743
81. Huang Q, Shen Z, Zang R, Fan X, Yang L, Xue M. Identification of novel genes and pathways in colorectal cancer exosomes: a bioinformatics study. *Transl Cancer Res*. 2018;7(3):651–658. doi:10.21037/tcr
82. Wyld DK, Selby P, Perren TJ, et al. Detection of colorectal cancer cells in peripheral blood by reverse-transcriptase polymerase chain reaction for cytokeratin 20. *Int J Cancer*. 1998;79(3):288–293. doi:10.1002/(sici)1097-0215(19980619)79:3<288::aid-ijc14>3.0.co;2-4
83. Hinz S, Bockhorst J, Roder C, et al. Disseminated tumor cells in the bone marrow negatively influence survival after resection of colorectal liver metastases. *Ann Surg Oncol*. 2012;19(8):2539–2546. doi:10.1245/s10434-012-2291-9
84. Funaki NO, Tanaka J, Itami A, et al. Detection of colorectal carcinoma cells in circulating peripheral blood by reverse transcription-polymerase chain reaction targeting cytokeratin-20 mRNA. *Life Sci*. 1997;60(9):643–652. doi:10.1016/s0024-3205(96)00700-x
85. Samija I, Lukac J, Muhrin MK, Kirac I, Kovacevic D, Kusic Z. Detection of cytokeratin-20-positive cells in preoperative and post-operative blood samples from colorectal cancer patients by real-time RT-PCR. *Int J Biol Markers*. 2013;28(2):174–181. doi:10.5301/jbm.5000003
86. Kust D, Samija I, Kirac I, Radic J, Kovacevic D, Kusic Z. Cytokeratin 20 positive cells in blood of colorectal cancer patients as an unfavorable prognostic marker. *Acta Clin Belg*. 2016;71(4):235–243. doi:10.1080/17843286.2016.1177264
87. Piva MG, Navaglia F, Basso D, et al. CEA mRNA identification in peripheral blood is feasible for colorectal, but not for gastric or pancreatic cancer staging. *Oncology*. 2000;59(4):323–328. doi:10.1159/000012190
88. Ito S, Nakanishi H, Hirai T, et al. Quantitative detection of CEA expressing free tumor cells in the peripheral blood of colorectal cancer patients during surgery with real-time RT-PCR on a LightCycler. *Cancer Lett*. 2002;183(2):195–203. doi:10.1016/s0304-3835(02)00157-x
89. Kanellos I, Zacharakis E, Kanellos D, et al. Prognostic significance of CEA levels and detection of CEA mRNA in draining venous blood in patients with colorectal cancer. *J Surg Oncol*. 2006;94(1):3–8. doi:10.1002/jso.20549
90. Lu CY, Uen YH, Tsai HL, et al. Molecular detection of persistent postoperative circulating tumour cells in stages II and III colon cancer patients via multiple blood sampling: prognostic significance of detection for early relapse. *Br J Cancer*. 2011;104(7):1178–1184. doi:10.1038/bjc.2011.40
91. Thorsteinsson M, Soletormos G, Jess P. Low number of detectable circulating tumor cells in non-metastatic colon cancer. *Anticancer Res*. 2011;31(2):613–617.
92. Yamaguchi K, Takagi Y, Aoki S, Futamura M, Saji S. Significant detection of circulating cancer cells in the blood by reverse transcriptase-polymerase chain reaction during colorectal cancer resection. *Ann Surg*. 2000;232(1):58–65. doi:10.1097/0000658-200007000-00009
93. Mathur P, Wharton RQ, Jonas SK, Saini S, Allen-Mersh TG. Relationship between tumour vascularity and circulating cancer cells in patients with colorectal carcinoma. *Eur J Surg Oncol*. 2001;27(4):354–358. doi:10.1053/ejso.2001.1118
94. Guller U, Zajac P, Schneider A, et al. Disseminated single tumor cells as detected by real-time quantitative polymerase chain reaction represent a prognostic factor in patients undergoing surgery for colorectal cancer. *Ann Surg*. 2002;236(6):768–775; discussion 775–766. doi:10.1097/0000658-200212000-00009
95. Iinuma H, Okinaga K, Egami H, et al. Usefulness and clinical significance of quantitative real-time RT-PCR to detect isolated tumor cells in the peripheral blood and tumor drainage blood of patients with colorectal cancer. *Int J Oncol*. 2006;28(2):297–306. doi:10.3892/ijo.28.2.297
96. Liu ZP, Li LM, Liu XL, Zhang DX. Comparative analysis of tumor markers and evaluation of their predictive value in patients with colorectal cancer. *Onkologie*. 2012;35(3):108–113. doi:10.1159/000336816
97. Huang P, Wang J, Guo Y, Xie W. Molecular detection of disseminated tumor cells in the peripheral blood in patients with gastrointestinal cancer. *J Cancer Res Clin Oncol*. 2003;129(3):192–198. doi:10.1007/s00432-003-0425-y
98. Nakamori S, Kameyama M, Furukawa H, et al. Genetic detection of colorectal cancer cells in circulation and lymph nodes. *Dis Colon Rectum*. 1997;40(10 Suppl):S29–S36. doi:10.1007/bf02062017
99. Hardingham JE, Hewett PJ, Sage RE, et al. Molecular detection of blood-borne epithelial cells in colorectal cancer patients and in patients with benign bowel disease. *Int J Cancer*. 2000;89(1):8–13. doi:10.1002/(SICI)1097-0215
100. Shimada R, Iinuma H, Akahane T, Horiuchi A, Watanabe T. Prognostic significance of CTCs and CSCs of tumor drainage vein blood in Dukes' stage B and C colorectal cancer patients. *Oncol Rep*. 2012;27(4):947–953. doi:10.3892/or.2012.1649
101. Xi L, Nicastrì DG, El-Hefnawy T, Hughes SJ, Luketich JD, Godfrey TE. Optimal markers for real-time quantitative reverse transcription PCR detection of circulating tumor cells from melanoma, breast, colon, esophageal, head and neck, and lung cancers. *Clin Chem*. 2007;53(7):1206–1215. doi:10.1373/clinchem.2006.081828
102. Winter M, Cai Z, Winkler K, et al. Circulating tumour cell RNA characterisation from colorectal cancer patient blood after inertial microfluidic enrichment. *MethodsX*. 2019;6:1512–1520. doi:10.1016/j.mex.2019.06.012
103. Liu Y, Cheng G, Qian J, et al. Expression of guanylyl cyclase C in tissue samples and the circulation of rectal cancer patients. *Oncotarget*. 2017;8(24):38841–38849. doi:10.18632/oncotarget.16406
104. Liu Y, Qian J, Feng JG, et al. Detection of circulating tumor cells in peripheral blood of colorectal cancer patients without distant organ metastases. *Cell Oncol*. 2013;36(1):43–53. doi:10.1007/s13402-012-0112-6
105. Chalopin A, Tellez-Gabriel M, Brown HK, et al. Isolation of circulating tumor cells in a preclinical model of osteosarcoma: effect of chemotherapy. *J Bone Oncol*. 2018;12:83–90. doi:10.1016/j.jbo.2018.07.002

106. Iinuma H, Watanabe T, Mimori K, et al. Clinical significance of circulating tumor cells, including cancer stem-like cells, in peripheral blood for recurrence and prognosis in patients with Dukes' stage B and C colorectal cancer. *J Clin Oncol*. 2011;29(12):1547–1555. doi:10.1200/JCO.2010.30.5151
107. Zieglschmid V, Hollmann C, Mannel J, et al. Tumor-associated gene expression in disseminated tumor cells correlates with disease progression and tumor stage in colorectal cancer. *Anticancer Res*. 2007;27(4a):1823–1832.
108. Sato N, Hayashi N, Imamura Y, et al. Usefulness of transcription-reverse transcription concerted reaction method for detecting circulating tumor cells in patients with colorectal cancer. *Ann Surg Oncol*. 2012;19(6):2060–2065. doi:10.1245/s10434-011-1889-7
109. Mirzaei A, Tavosoidana G, Rad AA, et al. A new insight into cancer stem cell markers: could local and circulating cancer stem cell markers correlate in colorectal cancer? *Tumor Biol*. 2016;37(2):2405–2414. doi:10.1007/s13277-015-3989-7
110. Wu S, Liu S, Liu Z, et al. Classification of circulating tumor cells by epithelial-mesenchymal transition markers. *PLoS One*. 2015;10(4):e0123976. doi:10.1371/journal.pone.0123976
111. Shen C, Hu L, Xia L, Li Y. Quantitative real-time RT-PCR detection for survivin, CK20 and CEA in peripheral blood of colorectal cancer patients. *Jpn J Clin Oncol*. 2008;38(11):770–776. doi:10.1093/jjco/hyn105
112. Schuster R, Max N, Mann B, et al. Quantitative real-time RT-PCR for detection of disseminated tumor cells in peripheral blood of patients with colorectal cancer using different mRNA markers. *Int J Cancer*. 2004;108(2):219–227. doi:10.1002/ijc.11547
113. Wang JY, Wu CH, Lu CY, et al. Molecular detection of circulating tumor cells in the peripheral blood of patients with colorectal cancer using RT-PCR: significance of the prediction of postoperative metastasis. *World J Surg*. 2006;30(6):1007–1013. doi:10.1007/s00268-005-0485-z
114. Wang JY, Lin SR, Wu DC, et al. Multiple molecular markers as predictors of colorectal cancer in patients with normal perioperative serum carcinoembryonic antigen levels. *Clin Cancer Res*. 2007;13(8):2406–2413. doi:10.1158/1078-0432.CCR-06-2054
115. Douard R, Moutereau S, Serru V, et al. Immunobead multiplex RT-PCR detection of carcinoembryonic genes expressing cells in the blood of colorectal cancer patients. *Clin Chem Lab Med*. 2005;43(2):127–132. doi:10.1515/CCLM.2005.021
116. Douard R, Le Maire V, Wind P, et al. Carcinoembryonic gene member 2 mRNA expression as a marker to detect circulating enterocytes in the blood of colorectal cancer patients. *Surgery*. 2001;129(5):587–594. doi:10.1067/msy.2001.112485
117. Bessa X, Elizalde JI, Boix L, et al. Lack of prognostic influence of circulating tumor cells in peripheral blood of patients with colorectal cancer. *Gastroenterology*. 2001;120(5):1084–1092. doi:10.1053/gast.2001.23245
118. De Luca A, Pignata S, Casamassimi A, et al. Detection of circulating tumor cells in carcinoma patients by a novel epidermal growth factor receptor reverse transcription-PCR assay. *Clin Cancer Res*. 2000;6(4):1439–1444.
119. Clarke LE, Leitzel K, Smith J, Ali SM, Lipton A. Epidermal growth factor receptor mRNA in peripheral blood of patients with pancreatic, lung, and colon carcinomas detected by RT-PCR. *Int J Oncol*. 2003;22(2):425–430. doi:10.3892/ijo.22.2.425
120. Fournier MV, Guimaraes Da Costa F, Paschoal ME, Ronco LV, Carvalho MG, Pardee AB. Identification of a gene encoding a human oxysterol-binding protein-homologue: a potential general molecular marker for blood dissemination of solid tumors. *Cancer Res*. 1999;59(15):3748–3753.
121. Gazzaniga P, Nofroni I, Gandini O, et al. Tenascin C and epidermal growth factor receptor as markers of circulating tumoral cells in bladder and colon cancer. *Oncol Rep*. 2005;14(5):1199–1202. doi:10.3892/or.14.5.1199
122. Yokobori T, Iinuma H, Shimamura T, et al. Platin3 is a novel marker for circulating tumor cells undergoing the epithelial-mesenchymal transition and is associated with colorectal cancer prognosis. *Cancer Res*. 2013;73(7):2059–2069. doi:10.1158/0008-5472.CAN-12-0326
123. Sugimachi K, Yokobori T, Iinuma H, et al. Aberrant expression of platin-3 via copy number gain induces the epithelial-mesenchymal transition in circulating colorectal cancer cells. *Ann Surg Oncol*. 2014;21(11):3680–3690. doi:10.1245/s10434-013-3366-y
124. Valladares-Ayerbes M, Diaz-Prado S, Reboredo M, et al. Bioinformatics approach to mRNA markers discovery for detection of circulating tumor cells in patients with gastrointestinal cancer. *Cancer Detect Prev*. 2008;32(3):236–250. doi:10.1016/j.cdp.2008.08.002
125. Mostert B, Sieuwerts AM, Bolt-de Vries J, et al. mRNA expression profiles in circulating tumor cells of metastatic colorectal cancer patients. *Mol Oncol*. 2015;9(4):920–932. doi:10.1016/j.molonc.2015.01.001
126. Valladares-Ayerbes M, Blanco-Calvo M, Reboredo M, et al. Evaluation of the adenocarcinoma-associated gene AGR2 and the intestinal stem cell marker LGR5 as biomarkers in colorectal cancer. *Int J Mol Sci*. 2012;13(4):4367–4387. doi:10.3390/ijms13044367
127. Mirzaei A, Tavosoidana G, Modarressi MH, et al. Upregulation of circulating cancer stem cell marker, DCLK1 but not Lgr5, in chemoradiotherapy-treated colorectal cancer patients. *Tumor Biol*. 2015;36(6):4801–4810. doi:10.1007/s13277-015-3132-9
128. Wang W, Wan L, Wu S, et al. Mesenchymal marker and LGR5 expression levels in circulating tumor cells correlate with colorectal cancer prognosis. *Cell Oncol*. 2018;45:1–10. doi:10.1007/s13402-018-0386-4
129. Ning Y, Zhang W, Hanna DL, et al. Clinical relevance of EMT and stem-like gene expression in circulating tumor cells of metastatic colorectal cancer patients. *Pharmacogenomics J*. 2018;18(1):29–34. doi:10.1038/tpj.2016.62
130. Gradilone A, Gazzaniga P, Silvestri I, et al. Detection of CK19, CK20 and EGFR mRNAs in peripheral blood of carcinoma patients: correlation with clinical stage of disease. *Oncol Rep*. 2003;10(1):217–222. doi:10.3892/or.10.1.217
131. Shan T, Cui X, Li W, Lin W, Li Y. AQP5: a novel biomarker that predicts poor clinical outcome in colorectal cancer. *Oncol Rep*. 2014;32(4):1564–1570. doi:10.3892/or.2014.3377
132. Burchill SA, Perebolte L, Johnston C, Top B, Selby P. Comparison of the RNA-amplification based methods RT-PCR and NASBA for the detection of circulating tumour cells. *Br J Cancer*. 2002;86(1):102–109. doi:10.1038/sj.bjc.6600014
133. Miyashiro I, Kuo C, Huynh K, et al. Molecular strategy for detecting metastatic cancers with use of multiple tumor-specific MAGE-A genes. *Clin Chem*. 2001;47(3):505–512.
134. Huang MY, Yen LC, Liu HC, et al. Significant overexpression of DVL1 in Taiwanese colorectal cancer patients with liver metastasis. *Int J Mol Sci*. 2013;14(10):20492–20507. doi:10.3390/ijms141020492
135. Steinert G, Scholch S, Niemiets T, et al. Immune escape and survival mechanisms in circulating tumor cells of colorectal cancer. *Cancer Res*. 2014;74(6):1694–1704. doi:10.1158/0008-5472.CAN-13-1885
136. Katoh S, Goi T, Naruse T, et al. Cancer stem cell marker in circulating tumor cells: expression of CD44 variant exon 9 is strongly correlated to treatment refractoriness, recurrence and prognosis of human colorectal cancer. *Anticancer Res*. 2015;35(1):239–244.
137. Bao H, Burke PA, Huang J, et al. Circulating tumor cells: application as a biomarker for molecular characterization and predictor of survival in an all-comer solid tumor phase I clinical study. *PLoS One*. 2013;8(8):e58557. doi:10.1371/journal.pone.0058557
138. Chang YT, Huang MY, Yeh YS, et al. A prospective study of comparing multi-gene biomarker chip and serum carcinoembryonic antigen in the postoperative surveillance for patients with stage I-III colorectal cancer. *PLoS One*. 2016;11(10):e0163264. doi:10.1371/journal.pone.0163264

139. Bahnassy AA, Salem SE, Mohanad M, et al. Prognostic significance of circulating tumor cells (CTCs) in Egyptian non-metastatic colorectal cancer patients: A comparative study for four different techniques of detection (Flowcytometry, CellSearch, Quantitative Real-time PCR and Cytomorphology). *Exp Mol Pathol*. 2019;106:90–101. doi:10.1016/j.yexmp.2018.12.006
140. Valcz G, Galamb O, Krenacs T, et al. Exosomes in colorectal carcinoma formation: ALIX under the magnifying glass. *Mod Pathol*. 2016;29(8):928–938. doi:10.1038/modpathol.2016.72
141. Tauro BJ, Greening DW, Mathias RA, et al. Comparison of ultracentrifugation, density gradient separation, and immunoaffinity capture methods for isolating human colon cancer cell line LIM1863-derived exosomes. *Methods*. 2012;56(2):293–304. doi:10.1016/j.ymeth.2012.01.002
142. Silva J, Garcia V, Rodriguez M, et al. Analysis of exosome release and its prognostic value in human colorectal cancer. *Genes Chromosomes Cancer*. 2012;51(4):409–418. doi:10.1002/gcc.21926
143. Campanella C, Rappa F, Sciumè C, et al. Heat shock protein 60 levels in tissue and circulating exosomes in human large bowel cancer before and after ablative surgery. *Cancer*. 2015;121(18):3230–3239. doi:10.1002/cncr.29499
144. Namba Y, Sogawa C, Okusha Y, et al. Depletion of lipid efflux pump ABCG1 triggers the intracellular accumulation of extracellular vesicles and reduces aggregation and tumorigenesis of metastatic cancer cells. *Front Oncol*. 2018;8:376. doi:10.3389/fonc.2018.00376
145. Sun B, Li Y, Zhou Y, et al. Circulating exosomal CPNE3 as a diagnostic and prognostic biomarker for colorectal cancer. *J Cell Physiol*. 2019;234(2):1416–1425. doi:10.1002/jcp.26936
146. Chen MS, Xu R, Ji H, et al. Transcriptome and long noncoding RNA sequencing of three extracellular vesicle subtypes released from the human colon cancer LIM1863 cell line. *Sci Rep*. 2016;6:38397. doi:10.1038/srep38397
147. Galon J, Fridman WH, Pages F. The adaptive immunologic microenvironment in colorectal cancer: a novel perspective. *Cancer Res*. 2007;67(5):1883–1886. doi:10.1158/0008-5472.CAN-06-4806
148. Peddareddigari VG, Wang D, Dubois RN. The tumor microenvironment in colorectal carcinogenesis. *Cancer Microenviron*. 2010;3(1):149–166. doi:10.1007/s12307-010-0038-3
149. Fu Q, Zhang Q, Lou Y, et al. Primary tumor-derived exosomes facilitate metastasis by regulating adhesion of circulating tumor cells via SMAD3 in liver cancer. *Oncogene*. 2018;37:6105–6118. doi:10.1038/s41388-018-0391-0
150. Crowley E, Di Nicolantonio F, Loupakis F, Bardelli A. Liquid biopsy: monitoring cancer genetics in the blood. *Nat Rev Clin Oncol*. 2013;10(8):472–484. doi:10.1038/nrclinonc.2013.110
151. Beauchemin N, Arabzadeh A. Carcinoembryonic antigen-related cell adhesion molecules (CEACAMs) in cancer progression and metastasis. *Cancer Metastasis Rev*. 2013;32(3–4):643–671. doi:10.1007/s10555-013-9444-6
152. Gold P, Freedman SO. Specific carcinoembryonic antigens of the human digestive system. *J Exp Med*. 1965;122(3):467–481. doi:10.1084/jem.122.3.467
153. Thomas P, Toth CA, Saini KS, Jessup JM, Steele G Jr. The structure, metabolism and function of the carcinoembryonic antigen gene family. *Biochim Biophys Acta*. 1990;1032(2–3):177–189. doi:10.1016/0304-419x(90)90003-j
154. Oikawa S, Inuzuka C, Kuroki M, Matsuoka Y, Kosaki G, Nakazato H. Cell adhesion activity of non-specific cross-reacting antigen (NCA) and carcinoembryonic antigen (CEA) expressed on CHO cell surface: homophilic and heterophilic adhesion. *Biochem Biophys Res Commun*. 1989;164(1):39–45. doi:10.1016/0006-291x(89)91679-3
155. Hammarstrom S. The carcinoembryonic antigen (CEA) family: structures, suggested functions and expression in normal and malignant tissues. *Semin Cancer Biol*. 1999;9(2):67–81. doi:10.1006/scbi.1998.0119
156. Blumenthal RD, Hansen HJ, Goldenberg DM. Inhibition of adhesion, invasion, and metastasis by antibodies targeting CEACAM6 (NCA-90) and CEACAM5 (Carcinoembryonic Antigen). *Cancer Res*. 2005;65(19):8809–8817. doi:10.1158/0008-5472.CAN-05-0420
157. Ordonez C, Sreaton RA, Ilantzis C, Stanners CP. Human carcinoembryonic antigen functions as a general inhibitor of anoikis. *Cancer Res*. 2000;60(13):3419–3424.
158. Duxbury MS, Ito H, Zinner MJ, Ashley SW, Whang EE. CEACAM6 gene silencing impairs anoikis resistance and in vivo metastatic ability of pancreatic adenocarcinoma cells. *Oncogene*. 2004;23(2):465–473. doi:10.1038/sj.onc.1207036
159. Duffy MJ. Carcinoembryonic antigen as a marker for colorectal cancer: is it clinically useful? *Clin Chem*. 2001;47(4):624–630.
160. Kim KJ, Kwon HJ, Kim MC, Bae YK. CD9 expression in colorectal carcinomas and its prognostic significance. *J Pathol Transl Med*. 2016;50(6):459–468. doi:10.4132/jptm.2016.10.02
161. Mokhtari M, Zakerzade Z. EPCAM expression in colon adenocarcinoma and its relationship with TNM staging. *Adv Biomed Res*. 2017;6:56. doi:10.4103/2277-9175.205529
162. Han S, Zong S, Shi Q, et al. Is Ep-CAM expression a diagnostic and prognostic biomarker for colorectal cancer? A systematic meta-analysis. *EBioMedicine*. 2017;20:61–69. doi:10.1016/j.ebiom.2017.05.025
163. Tan CR, Zhou L, El-Deiry WS. Circulating tumor cells versus circulating tumor DNA in colorectal cancer: pros and cons. *Curr Colorectal Cancer Rep*. 2016;12(3):151–161. doi:10.1007/s11888-016-0320-y
164. Mathai RAVR, Reddy BS, Thomas L, Udupa K, Kolesar J, Rao M. Potential utility of liquid biopsy as a diagnostic and prognostic tool for the assessment of solid tumors: implications in the precision oncology. *J Clin Med*. 2019;18(8):3. doi:10.3390/jcm8030373
165. Su W, Yu H, Jiang L, Chen W, Li H, Qin J. Integrated microfluidic device for enrichment and identification of circulating tumor cells from the blood of patients with colorectal cancer. *Dis Markers*. 2019;2019:8945974. doi:10.1155/2019/8945974
166. Willms A, Muller C, Julich H, et al. Tumour-associated circulating microparticles: a novel liquid biopsy tool for screening and therapy monitoring of colorectal carcinoma and other epithelial neoplasia. *Oncotarget*. 2016;7(21):30867–30875. doi:10.18632/oncotarget.9018

Cancer Management and Research

Dovepress

Publish your work in this journal

Cancer Management and Research is an international, peer-reviewed open access journal focusing on cancer research and the optimal use of preventative and integrated treatment interventions to achieve improved outcomes, enhanced survival and quality of life for the cancer patient.

The manuscript management system is completely online and includes a very quick and fair peer-review system, which is all easy to use. Visit <http://www.dovepress.com/testimonials.php> to read real quotes from published authors.

Submit your manuscript here: <https://www.dovepress.com/cancer-management-and-research-journal>