

Climate change in Switzerland: Impact on hazel, birch, and grass pollen on the basis of half a century of pollen records (1969 – 2018)

Thomas Frei

Research and Consulting, Arni, Switzerland

©2020 Dustri-Verlag Dr. K. Feistle
ISSN 2512-8957

DOI 10.5414/ALX02180E
e-pub: October 12, 2020

Key words

climate change – health
– pollen – hay fever

German version
published in
Allergologie,
Vol. 43, No. 9/2020,
pp. 357-366

Abstract. As indicated by the Intergovernmental Panel on Climate Change (IPCC), human activities are estimated to have caused ~ 1.0 °C of global warming above pre-industrial levels. The impact of this global warming is diverse and pertains also plant biology. The start of the pollen season as well as the observed quantities of pollen have been considered indicators of the impact of climate change. Switzerland has one of the longest pollen time series now – more than half a century. It has been tested whether the impact of climate change is robust by checking with this long time series of different pollen like hazel, birch, and grass as prominent representatives of triggers of hay fever. The results indicate that based on a time series of 50 years, the pollen seasons of hazel, birch, and grass started earlier as the temperature increased. Comparing the annual amount of pollen, a relevant increase is only observed for hazel. However, it must be considered that in the observed 50 years there was a land use change from grass land to built-up land due to the increase of population, and yet certain pollen counts increased considerably.

Introduction

International reports have documented a progressive global increase in the burden of allergic diseases across the industrialized world over the past half century. Clinical evidence reveals a general increase in both the incidence and the prevalence of respiratory diseases, including allergic rhinitis and asthma [1, 2]. Such phenomena may be related not only to air pollution and changes in lifestyle, but also to an actual increase in the amount and allergenicity of certain airborne allergenic pollen [3, 4] or prolonged pollen seasons caused by climate change [5].

Almost 20% of the Swiss population suffers from a pollen allergy [6]. Tree and grass

pollen from wind-pollinated plants are the most important triggers [7]. The most common allergenic tree pollen in Switzerland belong to the order of the Fagales or beech family (birch, *Betula verrucosa*; alder, *Alnus glutinosa*; hazel, *Corylus avellana*; hornbeam, *Carpinus betulus*). Allergens from these pollen are highly cross-reactive.

The global climate has changed considerably due to human activity as described by the Intergovernmental Panel on Climate Change (IPCC) [8]. On a global scale, the 5-year period 2015 – 2019 is likely to be the warmest measured, with a 1.1 °C global temperature increase since the pre-industrial period [9].

The impact of climate change on health has been increasingly debated and described: heat-related mortality [10, 11], vector-borne (mosquito, sandfly, and tick) and rodent-borne infections that show a trend of expanding to higher latitudes and altitudes [12, 13], or increase in hospital admissions because of flares of inflammatory bowel disease and infectious gastroenteritis during heat wave periods [14]. Finally, it has also been discussed that rising air temperatures and carbon dioxide concentrations are, in some plant species, resulting in increased pollen production and allergenicity and advancement and lengthening of the pollen season [15, 16, 17].

Increasing of pollen production or advancing and lengthening of the pollen season can only be reliably demonstrated by long-term measurements. The pollen trap in Basel, Switzerland, is one of the longest-existing within Europe, and the technology has been the same for the whole time period [18]. Earlier investigations with this exceptional long time series have already shown a similar trend [15, 16]. However with a time series of half a century, the earlier findings are now even more coherent.

Received
March 5, 2020;
accepted in revised form
July 3, 2020

Correspondence to
Dr. sc. nat. Thomas Frei,
Research and
Consulting, 8905 Arni,
Switzerland
thomas.frei1@
bluewin.ch

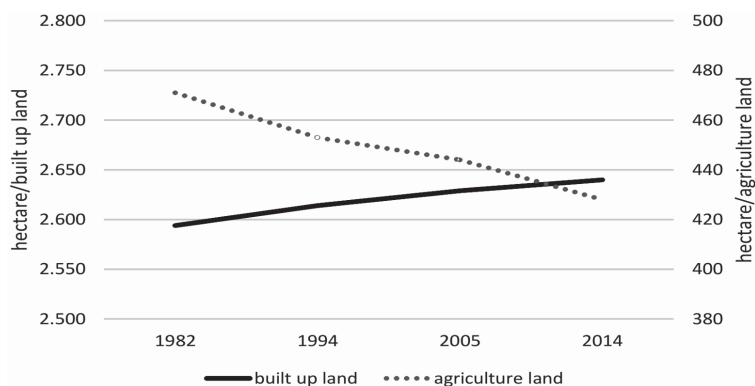


Figure 1. Land use change in the Kanton Basel-Stadt from 1984 to 2014.

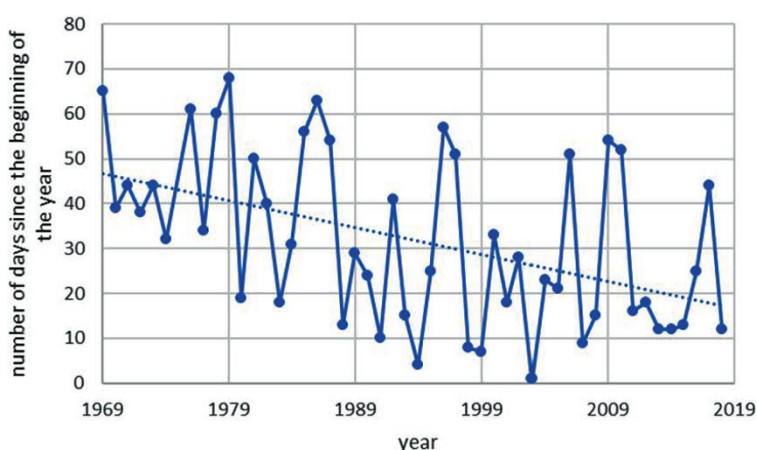


Figure 2. Start of Corylus pollen season in Basel.

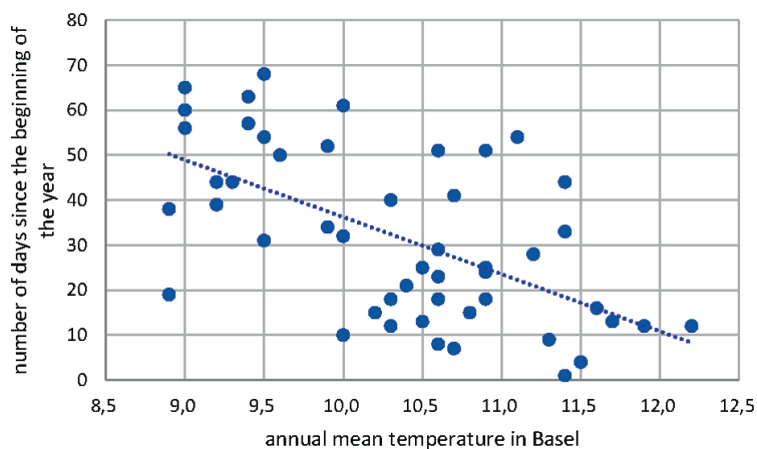


Figure 3. Correlation of annual mean temperature in Basel and the number of days since the beginning of Corylus pollen release.

Materials and Methods

Meteorological data

Meteorological data were collected at the meteorological station of Basel-Binningen, 316 m above sea level. The air temperature

is measured 2 m above ground according to recommendations of the World Meteorological Organization. Temperature at the climatological station Basel is measured within the automatic monitoring network of the Federal Office of Meteorology and Climatology. The station delivers a multitude of current data on the weather and climate in Switzerland every 10 minutes. The data is automatically transmitted to the central database, where various quality assurance checks are performed.

Pollen data

Pollen data for Basel were collected over a period of 50 years (1969 – 2018) in a Burkard volumetric pollen and spore trap (Hirst [19]) with a sucking rate of 10 L minute⁻¹. The pollen trap in Basel is located at the Kantonsspital building, 260 m above sea level. The distance between the pollen trap and the meteorological station is ~ 3 km. The start of the pollen season has been defined as the day when the sum of the daily counts reaches 2.5% of the annual pollen count, and the end of the pollen season when the sum of daily counts reaches 97.5% of the annual pollen count, whereby the pollen season encompasses 95% of the pollen recorded in the whole year [20]. There are different definitions about the start and length of the pollen season [21].

In the case of Corylus pollen it has to be mentioned that for the year 1975 no data were available due to technical problems with the pollen count.

Land use data

Land use data have been provided by the government of canton Basel-Stadt. These data are only available since 1984 and are normally updated every 12 years. Therefore, only 4 different data points are available.

Statistical and graphical analyses

Statistical analysis (t-test, Pearson correlation) and graphic presentations were carried out with the software of Microsoft Excel.

Table 1. Statistical analysis of the annual mean temperature in Basel and the number of days since the beginning of *Corylus* pollen release.

	Variable 1	Variable 2
Mean	10.35102041	31.7755102
Variance	0.766717687	356.5110544
Observations	49	49
Pearson correlation	-0.588640907	
Hypothesized mean difference	0	
Degrees of freedom	48	
t stat	-7.726566978	
P (T<=t) one-tail	2.85788E-10	
t critical one-tail	1.677224196	
P (T<=t) two-tail	5.71575E-10	
t critical two-tail	2.010634758	

t-test: paired two sample for means.

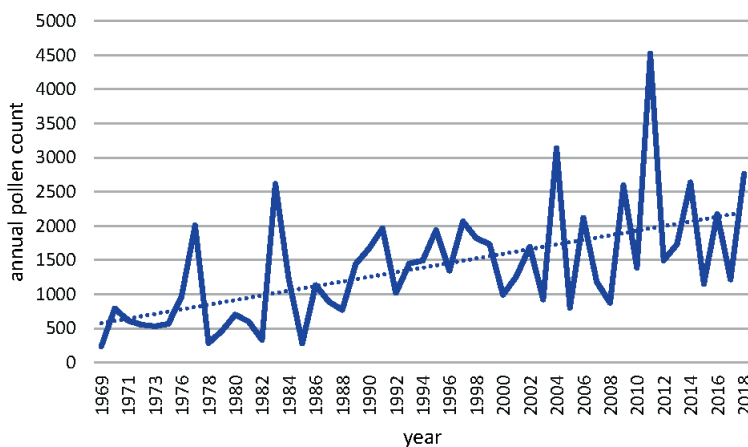


Figure 4. Annual *Corylus* pollen count in Basel.

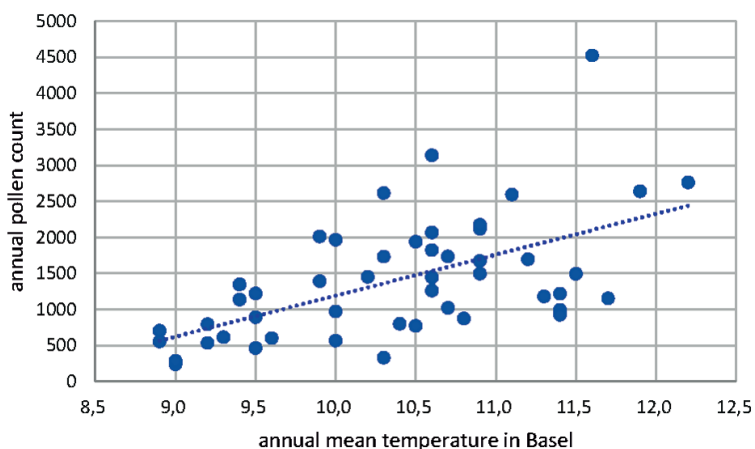


Figure 5. Correlation of annual mean temperature in Basel and the number of annual *Corylus* pollen.

Results

Land use change

For understanding any pattern of pollen count it was investigated whether the relation between built-up land and agricultural land had been changing over the observed time period. As shown in Figure 1, there has been a loss of agricultural land of 9% (from 471 ha to 428 ha).

Corylus pollen season

The start of *Corylus* pollen season has shifted over the time period from 1969 to 2018 as shown in Figure 2. This shift has been investigated with the annual mean temperature in Basel as shown in Figure 3. The statistical analysis of this correlation between annual mean temperature and number of days since the beginning of the year results in a Pearson correlation of -0.588 with a $p < 0.05$ as shown in Table 1.

The annual pollen count of *Corylus* in Basel also shows a shift to higher counts in the time period of 1969 – 2018 (Figure 4). The number of pollen counts increased from ~ 500 in 1969 to $\sim 2,000$ in 2018. The correlation of the annual mean temperature in Basel and the number of annual *Corylus* pollen has also been analyzed statistically and was found to be highly relevant as shown in Table 2 and Figure 5 (Pearson correlation 0.585 , $p < 0.05$).

Betula pollen season

The start of *Betula* pollen season has shifted over the time period from 1969 to 2018 as shown in Figure 6. This shift has been investigated with the annual mean temperature in Basel as shown in Figure 7. The statistical analysis of this correlation between annual mean temperature and number of days since the beginning of the year results in a Pearson correlation of -0.485 with a $p < 0.05$ as shown in Table 3.

The annual pollen count of *Betula* in Basel shows no shift to higher counts in the time period 1969 – 2018.

Table 2. Statistical analysis of the annual mean temperature in Basel and the number of annual *Corylus* pollen.

	Variable 1	Variable 2
Mean	10.35102041	1391.32653
Variance	0.766717687	721248.766
Observations	49	49
Pearson correlation	0.585963474	
Hypothesized mean difference	0	
degrees of freedom	48	
t stat	-11.38947702	
P (T<=t) one-tail	1.51126E-15	
t critical one-tail	1.677224196	
P (T<=t) two-tail	3.02253E-15	
t critical two-tail	2.010634758	

t-test: paired two sample for means.

Poaceae pollen season

The start of *Poaceae* pollen season has shifted over the time period from 1969 to 2018 as shown in Figure 8. This shift has been investigated with the annual mean temperature in Basel as shown in Figure 9. The statistical analysis of this correlation between annual mean temperature and number of days since the beginning of the year results in a Pearson correlation of -0.493 with a $p < 0.05$ as shown in Table 4.

Conclusion

In this study, t-test and Pearson correlation analysis have been done for the investigation of the start of the pollen season with the longest time series of pollen observation in Basel/Switzerland from 1969 to 2018.

The main conclusions of this study are as follows:

- The start of *Corylus*, *Betula*, and *Poaceae* pollen season had shifted over the time period from 1969 to 2018. These shifts had been investigated with the annual mean temperature in Basel. The statistical analysis of this correlation between annual mean temperature and number of days since the beginning of the year results in a Pearson correlation of -0.588 with a $p < 0.05$ for *Corylus*, of -0.485 with a $p < 0.05$ for *Betula*, and -0.493 with a $p < 0.05$ for *Poaceae*. Between 1969 and 2018, there has been a forward shift of the beginning of the pollen season: for *Corylus* is in the range of 25 days, for *Betula* 10 days and for *Poaceae* 6 days.
- The annual pollen count of *Corylus* in Basel shows also a shift towards higher counts in the time period 1969 – 2018. The correlation of the annual mean temperature in Basel and the number of annual *Corylus* pollen has been analyzed statistically and found to be highly relevant (Pearson correlation 0.585, $p < 0.05$). The number of pollen counts increased correspondingly from 500 to 2,000.
- The increase of annual pollen count of *Corylus* in Basel was compared with the land use in the corresponding region. It was found, that there has been a loss of

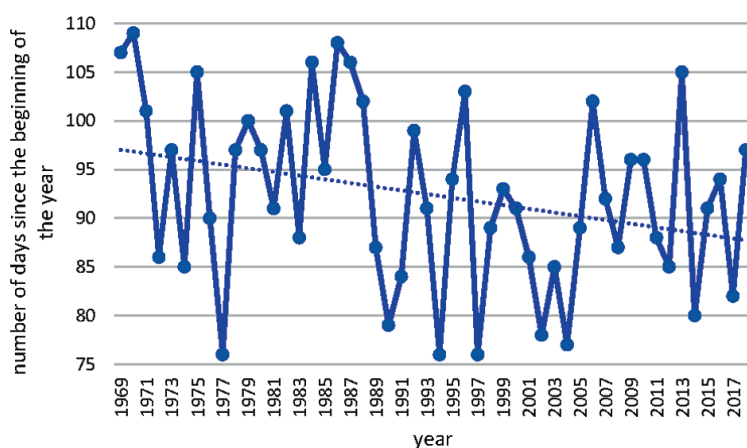


Figure 6. Start of *Betula* pollen season in Basel.

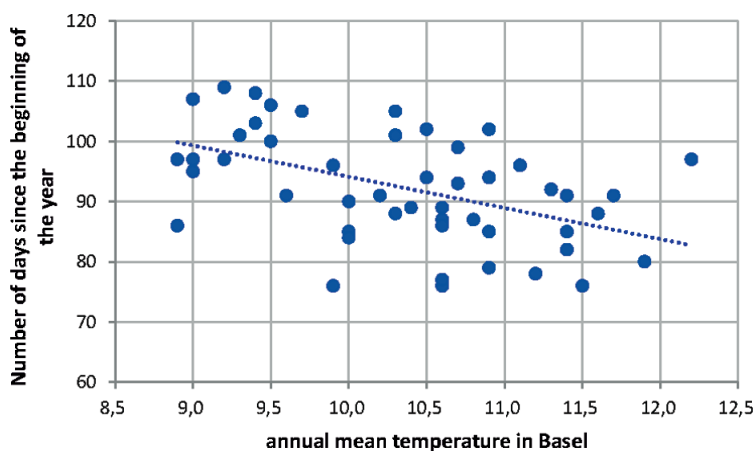


Figure 7. Correlation of annual mean temperature in Basel and the number of days since the beginning of *Betula* pollen release.

Table 3. Statistical analysis of the annual mean temperature in Basel and the number of days since the beginning of *Betula* pollen release.

	Variable 1	Variable 2
Mean	92.38	10.338
Variance	86.36285714	0.759546939
Observations	50	50
Pearson correlation	-0.485869563	
Hypothesized mean difference	0	
Degrees of freedom	49	
t Stat	59.52181264	
P (T<=t) one-tail	1.15075E-47	
t critical one-tail	1.676550893	
P (T<=t) two-tail	2.3015E-47	
t critical two-tail	2.009575237	

t-est: paired two sample for means.

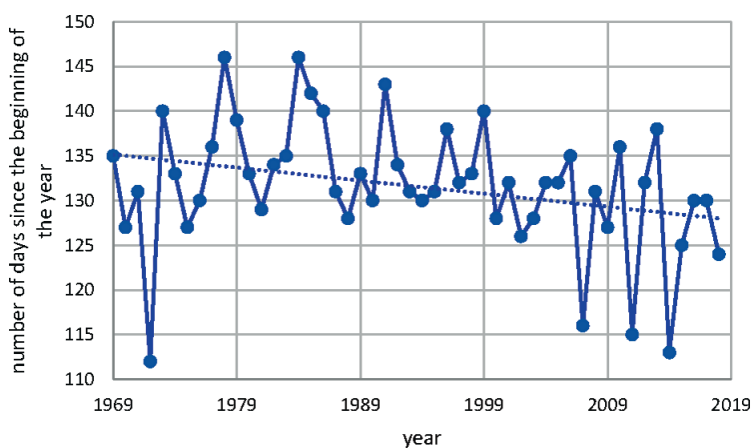


Figure 8. Start of Poaceae pollen season in Basel.

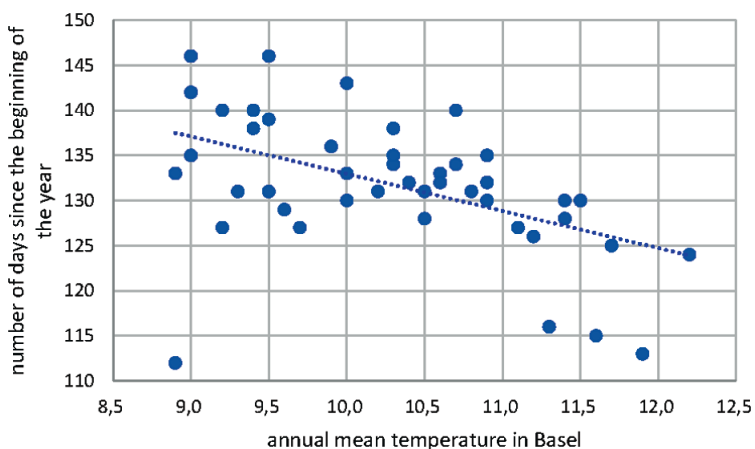


Figure 9. Correlation of annual mean temperature in Basel and the number of days since the beginning of Poaceae pollen release.

agricultural land of 9% (from 471 ha to 428 ha). That means, that the increase of pollen counts of *Corylus* can not be explained by a land use change but more with the increase of temperature and/or concentration of CO₂.

Discussion

The longest data series from continuous volumetric pollen traps in Europe cover a period of 50 years and were obtained in Basel/Switzerland and Leiden/The Netherlands. London even started in 1961 but was interrupted between 1984 and 1987, and Stockholm started in 1973 [18].

Airborne pollen measurements are therefore among the longest-term datasets of biological origin, representing a valuable proxy of ongoing climate change.

Based on data of half a century from the longest pollen data series in Switzerland (Basel 1969 – 2018), which is also one of the longest time series in Europe, the study distinctly indicates the impact of higher temperatures on earlier starting time of pollen release for all investigated plants (hazel, birch, and grass). Due to the fact of global warming [8], this means that pollen release starts earlier in hazel, birch, and grass. For the period 1969 – 2018, the shift for *Corylus* was in the range of 25 days between 1969 and 2018, for *Betula* 10 days, and for Poaceae 6 days. The influence of the higher temperature is therefore greater, the earlier in the growing season a plant begins to flower.

Especially in the case of hazel this is of great importance for hay fever patients, since they can have symptoms already in January [22]. In the case of the released pollen amount the situation is not identical for all plants. The study showed that hazel pollen relevantly increased with increasing temperature. Therefore, global warming might have a significant impact on human health, especially in for hay fever patients.

Extensive research over the last decade has shown that airborne pollen has increased in abundance, but pollen seasons have also shifted to an earlier timeframe and may last longer [4]. It is still not clear, though, if this is the result of increased pollen production

Table 4. Statistical analysis of the annual mean temperature in Basel and the number of days since the beginning of Poaceae pollen release.

	Variable 1	Variable 2
Mean	131.58	10.338
Variance	53.06489796	0.759546939
Observations	50	50
Pearson correlation	-0.493121532	
Hypothesized mean difference	0	
Degrees of freedom	49	
t stat	110.5992921	
P (T<=t) one-tail	9.50237E-61	
t Critical one-tail	1.676550893	
P (T<=t) two-tail	1.90047E-60	
t critical two-tail	2.009575237	

t-test: paired two sample for means.

per floral unit or per individual plant, or the consequence of land use changes, ongoing climate change, eutrophication, global warming, or a combination of these and many other factors. To date, some of the main causative factors for these changes have been considered air pollutants and higher air temperatures associated with global warming, or urbanization rates and land use changes [23].

Acknowledgment

Pollen data and meteorological data were kindly provided by the Federal Office of Meteorology and Climatology. Land use data were kindly provided by the statistical office of Kanton Basel-Stadt.

Funding

The author has no funding received.

Conflict of interest

The author declares no conflict of interest.

References

- [1] Bunne J, Moberg H, Hedman L, Andersson M, Bjerg A, Lundbäck B, Rönmark E. Increase in Allergic Sensitization in Schoolchildren: Two Cohorts Compared 10 Years Apart. *J Allergy Clin Immunol Pract.* 2017; 5: 457-463.e1. [CrossRef PubMed](#)
- [2] Wüthrich B, Schindler C, Leuenberger P, Ackermann-Liebrich U; Swiss Study on Air Pollution and Lung Diseases in Adults. Prevalence of atopy and pollinosis in the adult population of Switzerland (SAPALDIA study). *Int Arch Allergy Immunol.* 1995; 106: 149-156. [CrossRef PubMed](#)
- [3] Beck I, Jochner S, Gilles S, McIntyre M, Buters JT, Schmidt-Weber C, Behrendt H, Ring J, Menzel A, Traidl-Hoffmann C. High environmental ozone levels lead to enhanced allergenicity of birch pollen. *PLoS One.* 2013; 8: e80147. [CrossRef PubMed](#)
- [4] Ziello C, Sparks TH, Estrella N, Belmonte J, Bergmann KC, Bucher E, Brighetti MA, Damialis A, Detandt M, Galán C, Gehrig R, Grewling L, Gutiérrez Bustillo AM, Hallsdóttir M, Kockhans-Bieda MC, De Linares C, Myszkowska D, Páldy A, Sánchez A, Smith M, et al. Changes to airborne pollen counts across Europe. *PLoS One.* 2012; 7: e34076. [CrossRef PubMed](#)
- [5] Damialis A, Håring F, Gökkaya M, Rauer D, Reiger M, Bezold S, Bounas-Pyrras N, Eyerich K, Todorova A, Hammel G, Gilles S, Traidl-Hoffmann C. Human exposure to airborne pollen and relationships with symptoms and immune responses: Indoors versus outdoors, circadian patterns and meteorological effects in alpine and urban environments. *Sci Total Environ.* 2019; 653: 190-199. [CrossRef PubMed](#)
- [6] Ballmer-Weber B, Helbling A. Allergische Rhinitis. *Swiss Medical Forum.* 2017; 17: 179-186.
- [7] García-Mozo H. Poaceae pollen as the leading aeroallergen worldwide: A review. *Allergy.* 2017; 72: 1849-1858. [CrossRef PubMed](#)
- [8] IPCC. Climate Change 2014: Synthesis Report. Contribution of Working Groups I, II and III to the Fifth Assessment Report of the Intergovernmental Panel on Climate Change. Pachauri RK, Meyer LA (eds.). Geneva, Switzerland; IPCC: 2014, p. 151.
- [9] WMO. The global climate in 2015 – 2019. Geneva; World Meteorological Organization: 2019.
- [10] Frei T. Hitzewellen und Mortalität am Beispiel der Schweizer Stadt Basel für die Zeitperiode 2000-2016. *Prävent Rehabil.* 2018; 30: 67-72. [CrossRef](#)
- [11] Sera F, Armstrong B, Tobias A, Vicedo-Cabrera AM, Åström C, Bell ML, Chen BY, de Sousa Zanotti Stagliorio Coelho M, Matus Correa P, Cruz JC, Dang TN, Hurtado-Diaz M, Do Van D, Forsberg B, Guo YL, Guo Y, Hashizume M, Honda Y, Iñiguez C, Jaakkola JJK, et al. How urban characteristics affect vulnerability to heat and cold: a multi-country analysis. *Int J Epidemiol.* 2019; 48: 1101-1112. [CrossRef PubMed](#)
- [12] EASAC. The imperative of climate action to protect human health in Europe. European Academies Science Advisory Council. <https://easac.eu/publications/details/the-imperative-of-climate->

- action-to-protect-human-health-in-europe/. 2019. Accessed July 11, 2019.
- [13] *Frei T.* Climate change and its impact on tick-borne encephalitis incidence in Switzerland 2000–2018. *Prävent Rehabil.* 2020; 32: 1-9.
- [14] *Manser CN, Paul M, Rogler G, Held L, Frei T.* Heat waves, incidence of infectious gastroenteritis, and relapse rates of inflammatory bowel disease: a retrospective controlled observational study. *Am J Gastroenterol.* 2013; 108: 1480-1485. [CrossRef PubMed](#)
- [15] *Frei T.* The effects of climate change in Switzerland 1969–1996 on airborne pollen quantities from hazel, birch and grass. *Grana.* 1998; 37: 172-179. [CrossRef](#)
- [16] *Frei T, Gassner E.* Climate change and its impact on birch pollen quantities and the start of the pollen season an example from Switzerland for the period 1969-2006. *Int J Biometeorol.* 2008; 52: 667-674. [CrossRef PubMed](#)
- [17] *Katelaris CH, Beggs PJ.* Climate change: allergens and allergic diseases. *Intern Med J.* 2018; 48: 129-134. [CrossRef PubMed](#)
- [18] *Spieksma FTM, Emberlin JC, Hjelmroos M, Jäger S, Leuschner RM.* Atmospheric birch (*Betula*) pollen in Europe: Trends and fluctuations in annual quantities and the starting dates of the seasons. *Grana.* 1995; 34: 51-57. [CrossRef](#)
- [19] *Hirst JM.* An automatic volumetric spore trap. *Ann Appl Biol.* 1952; 39: 257-265. [CrossRef](#)
- [20] *Goldberg C, Buch H, Moseholm L, Weeke ER.* Airborne Pollen Records in Denmark, 1977–1986. *Grana.* 1988; 27: 209-217. [CrossRef](#)
- [21] *Pfaar O, Bastl K, Berger U, Buters J, Calderon MA, Clot B, Darsow U, Demoly P, Durham SR, Galán C, Gehrig R, Gerth van Wijk R, Jacobsen L, Klimek L, Sofiev M, Thibaudon M, Bergmann KC.* Defining pollen exposure times for clinical trials of allergen immunotherapy for pollen-induced rhinoconjunctivitis – an EAACI position paper. *Allergy.* 2017; 72: 713-722. [CrossRef PubMed](#)
- [22] *Newson RB, van Ree R, Forsberg B, Janson C, Lötvall J, Dahlén S-E, Toskala EM, Baelum J, Brożek GM, Kasper L, Kowalski ML, Howarth PH, Fokkens WJ, Bachert C, Keil T, Krämer U, Bislimovska J, Gjomarkaj M, Loureiro C, Burney PGJ, et al.* Geographical variation in the prevalence of sensitization to common aeroallergens in adults: the GA(2) LEN survey. *Allergy.* 2014; 69: 643-651. [CrossRef PubMed](#)
- [23] *Voltolini S, Minale P, Troise C, Bignardi D, Modena P, Arobba D, Negrini AC.* Trend of herbaceous pollen diffusion and allergic sensitisation in Genoa, Italy. *Aerobiologia.* 2000; 16: 245-249. [CrossRef](#)