

RESEARCH

Open Access



Blood volume measurement using cardiovascular magnetic resonance and ferumoxytol: preclinical validation

Rajiv Ramasawmy, Toby Rogers, Miguel A. Alcantar, Delaney R. McGuirt, Jaffar M. Khan, Peter Kellman, Hui Xue, Anthony Z. Faranesh, Adrienne E. Campbell-Washburn, Robert J. Lederman* and Daniel A. Herzka

Abstract

Background: The hallmark of heart failure is increased blood volume. Quantitative blood volume measures are not conveniently available and are not tested in heart failure management. We assess ferumoxytol, a marketed parenteral iron supplement having a long intravascular half-life, to measure the blood volume with cardiovascular magnetic resonance (CMR).

Methods: Swine were administered 0.7 mg/kg ferumoxytol and blood pool T_1 was measured repeatedly for an hour to characterize contrast agent extraction and subsequent effect on V_{blood} estimates. We compared CMR blood volume with a standard carbon monoxide rebreathing method. We then evaluated three abbreviated acquisition protocols for bias and precision.

Results: Mean plasma volume estimated by ferumoxytol was 61.9 ± 4.3 ml/kg. After adjustment for hematocrit the resultant mean blood volume was 88.1 ± 9.4 ml/kg, which agreed with carbon monoxide measures (91.1 ± 18.9 ml/kg). Repeated measurements yielded a coefficient of variation of 6.9%, and Bland-Altman repeatability coefficient of 14%. The blood volume estimates with abbreviated protocols yielded small biases (mean differences between 0.01–0.06 L) and strong correlations (r^2 between 0.97–0.99) to the reference values indicating clinical feasibility.

Conclusions: In this swine model, ferumoxytol CMR accurately measures plasma volume, and with correction for hematocrit, blood volume. Abbreviated protocols can be added to diagnostic CMR examination for heart failure within 8 min.

Keywords: Heart failure, CMR, MRI, Ferumoxytol, Blood volume, T_1 mapping

Background

The hallmark of heart failure is volume overload [1, 2]. Clinical evaluation includes qualitative auscultatory markers of cardiac wall stress (gallops) and lung water (rales), peptide biomarkers of wall stress (natriuretic peptides), qualitative radiographic markers of interstitial lung fluid (infiltrates and Kerley lines etc.), cardiac imaging and invasive markers of pressure overload. Initial management of decompensated heart failure chiefly consists of diuresis to reduce volume overload. Nevertheless, quantitative measures of blood volume are generally not

employed clinically, because they are not conveniently accessible and because their value has not been tested.

Accurate measurement of blood volume, if readily accessible, might impact management of chronic and decompensated chronic heart failure [3]. Previous studies have characterized patients with heart failure to have a total blood volume of 20% above body-weight predicted values [4–6].

Current methods to measure blood volume include controlled inhalation of carbon monoxide to tag circulating hemoglobin, or tracer dilution using Evans blue dye or radiopharmaceuticals [4, 7–10], and are infrequently used clinically because of ionizing radiation, cost, and/or complexity in stand-alone examinations. Cardiovascular magnetic resonance (CMR) dilution measurement of

* Correspondence: lederman@nih.gov

Division of Intramural Research, National Heart Lung and Blood Institute, National Institutes of Health, Building 10, Room 2C713, 10 Center Drive, Bethesda, MD 20892, USA



plasma blood volume has been attempted in rats [11] using gadopentetate dimeglumine (Gd-DTPA), which has a relatively short distribution and elimination kinetics that limit measurement accuracy and feasibility. Gadofosveset trisodium, which reversibly binds plasma albumin, might be an attractive alternative because of its a longer intravascular half-life [12] except but it exhibits significant and rapid extravascular distribution, and has been withdrawn from marketing because of poor sales. Hence, we sought to develop a convenient gadolinium-free method to quantify blood volume by using an agent with longer half-life, ferumoxytol, so that it can possibly be included in a standard CMR examination.

Ferumoxytol is a superparamagnetic iron nanoparticle indicated for iron replacement in iron-deficiency anemia. It is an alternative to gadolinium-based CMR contrast agents, which are associated with nephrogenic systemic fibrosis in patients with renal disease, and which are under scrutiny because of unexpected cerebral gadolinium accumulation [13–15]. Ferumoxytol exhibits marked relaxivity effects [16–18], and is a candidate tracer for blood volume measurement because of its long intravascular half-life of 9–14 h and low extravascular biodistribution [19].

The aim of this study is to assess the in vivo feasibility and repeatability of measuring blood volume using ferumoxytol tracer dilution. The accuracy of this measurement is compared against a reference carbon monoxide hemoglobin binding technique. We characterize measurement stability, in face of ferumoxytol elimination from the blood compartment at reduced doses, over a period of 1 h. We also performed Monte Carlo simulations to minimize the number of T_1 measurements and produce an abbreviated acquisition protocol.

Methods

Animals

All procedures were approved by the institutional Animal Care and Use Committee and performed according to NIH guidelines. Swine ($N = 6$ Yucatan, 35–50 kg, S&S Farms, USA) were pre-medicated with glucocorticoids and anti-histamine [20, 21]. Anesthesia was maintained with mechanical ventilation and inhaled isoflurane, and euolemia restored after overnight fast using 10–15 ml/kg isotonic saline 20 min before blood volume measurements. Femoral arterial and venous femoral introducer sheaths were placed percutaneously.

Ferumoxytol relaxivity in blood in vitro

CMR was performed at 1.5 T (Aera, Siemens Healthineers, Erlangen, Germany), using two standard body arrays. Longitudinal relaxivity r_1 was characterized prior the repeatability study in a Yorkshire swine sample. A series of dilutions of ferumoxytol (0.10–1.72 mM) in 50 mL heparinized swine blood in a heated water bath

(35–41 °C) were characterized with T_1 measurements using with SATuration-recovery single-SHot Acquisition (SASHA) with 11 exponentially spaced saturation times ranging from 100 to 10,000 ms, and a simulated cardiac interval of 1 s (acquisition parameters below).

Ferumoxytol blood volume measurement in vivo

Two successive imaging sessions tested the repeatability of the blood volume measurement at euolemia. Based on a target post-contrast T_1 of approximately 300 ms for optimal accuracy and precision in the T_1 measurement [11], animals received 0.7 mg/kg (0.011 mM/kg) ferumoxytol diluted in 50 ml saline infused slowly ~ 0.4 ml/sec. As ferumoxytol elimination from the blood is faster at lower concentrations [19], each animal was imaged for an hour to characterize the resultant change in T_1 . Three animals underwent an additional imaging session at a reduced dose of ferumoxytol ($N = 1$ at 10%, 20% or 50% of the 0.7 mg/kg dose). Successive imaging sessions were 3–4 days apart. For each imaging session, total blood volume was compared using both CMR and carbon monoxide (CO) rebreathing techniques [22].

Carbon monoxide blood volume measurement in vivo

A reference blood volume was measured using the absorption of CO through a rebreathing apparatus constructed according to the methods proposed by Schmidt et al. [22]. Three baseline samples were drawn from the femoral artery and analyzed for carboxyhemoglobin (COHb) using a blood-gas analyzer (Avoximeter 4000, Accriva Diagnostics, Werfen Company Bedford, Massachusetts, USA).

Following baseline measurements, a 1 ml/kg (max 50 ml) volume of CO was administered to the rebreathing apparatus, and the reservoir bag squeezed to simulate a single inhalation held for 10 s. The animals were then manually ventilated for 2 min before reverting to normal ventilation using a 3-way stopcock. Blood was sampled to measure COHb at 6, 7 and 8 min following CO administration.

CO rebreathing allows for the estimation of blood volume V_{blood} based on the determination of V_{CO} , the volume of CO administered through rebreathing [22]:

$$V_{blood} = V_{CO} \frac{K * 100}{[Hb] * \Delta\%[COHb] * n_H}, \quad (1)$$

where K is a Boyle's Law volume correction factor for standard temperature and pressure, the concentration of hemoglobin is given by $[Hb]$ in g/L, and the hemoglobin oxygen capacity is given by Hüfner's number, $n_H = 1.31$ ml/g [23]. The change in the concentration of COHb, $\Delta\%[COHb]$, is calculated from the average baseline and the average over 6 to 8 min post-administration of CO.

To account for systematic losses in the total volume of carbon monoxide administered (V_{CO}) after rebreathing, the following corrections were made. First, a 1% loss due to the affinity of CO to Hb was assumed. Second, corrections for the volume of CO not administered through rebreathing and the volume expired to the air following rebreathing were applied as detailed by Schmidt et al. [22]. The volume of CO remnant in the spirometer was estimated by the product of the rebreathing apparatus volume and the concentration of CO ([CO]) in the rebreathing bag as determined by a CO monitor (Dräger Pac 3500, Dräger, Lübeck, Germany). The mean measured rebreathing bag volume was 2.7 ± 0.3 L, the spirometer's volume was measured to be 0.04 L, and the lung volume of the swine was assumed to be 1 L [24]. The volume of CO removed by the body was estimated from the average [HbCO] over 6–8 min, using a previous finding that the concentration of COHb is related to the expired CO (expired CO = $5.09[COHb] + 2.34$ ppm [25]), and assuming an alveolar ventilation rate of 5 L/min [22], and the average of the blood sampling times (7 min) as the measurement time.

Quantification of blood volume with ferumoxytol

The total circulating blood volume V_{blood} can be estimated by the plasma blood volume V_{plasma} , using the change in longitudinal relaxation rate $R_1 = 1/T_1$ after administration of contrast agent (CA) in conjunction with hematocrit. The change in relaxation rate in response to the infusion of CA is given by:

$$R_1(t) = R_{1,\emptyset} + r_i[CA] \quad (2)$$

where $R_{1,\emptyset}$ represents the native longitudinal relaxation rate before contrast, r_i is the agent's relaxivity ($\text{mM}^{-1} \text{s}^{-1}$), and [CA] is the concentration in mM. $R_1(t)$ decreases towards $R_{1,\emptyset}$ exponentially as the agent is removed from circulation. As iron concentration is given by $[CA] = n_{Fe}/V$, the plasma volume estimate $V'(t)$ can be calculated thus:

$$V'(t) = \frac{r_i n_{Fe}}{\Delta R_1(t)}, \quad (3)$$

where $\Delta R_1(t) = R_1(t) - R_{1,\emptyset}$, and n_{Fe} is the amount of iron in millimoles. Though n_{Fe} is time-dependent as the ferumoxytol is extracted from circulation, it is treated as constant, as the changing concentration of CA is measured within $R_1(t)$. The injected amount of iron (n_{Fe}) is given by the product of iron concentration of ferumoxytol (30 mg/ml), the molar mass of iron (55.845 g/mol) and the injected volume of ferumoxytol in ml. Sequential measurements of $R_1(t)$ can be used to calculate $V'(t)$ using Eq. 3. As posited by Pannek et al. for Gd-based agents, V_{plasma} can then be calculated by fitting the

estimated 'time-dependent' plasma volume, $V'(t)$ [11], assuming an exponential elimination:

$$V'(t) = V_{plasma} \exp\left(-\frac{t}{\tau}\right), \quad (4)$$

where τ is the time constant for extraction of ferumoxytol from circulation. As physiology is typically reported in terms of half-life, this term shall be reported, with the half-life $t_{1/2} = \tau \times \ln 2$. For the purposes of log-linear regression, Eq. (4) can be expressed as follows:

$$\log(V'(t)) = \log(V_{plasma}) + t/\tau, \quad (5)$$

thus V_{plasma} can be determined from the y-intercept. The total blood volume V_{blood} can be calculated by normalizing V_{plasma} by the hematocrit Hct , the ratio of the volume of red blood cells V_{RBC} to V_{plasma} :

$$V_{blood} = V_{plasma} + V_{RBC} \quad (6)$$

$$V_{blood} = \frac{V_{plasma}}{1-Hct} \quad (7)$$

Hence, blood T_1 measurements pre- and post-ferumoxytol can be used to estimate V_{blood} .

CMR protocol

All SASHA T_1 measurements were acquired in 4-chamber orientation to maximize the number of blood pool pixels in both the left ventricle (LV) and right ventricle (RV) at end-diastole. To measure the coefficient of variation in R_1 , five T_1 maps were acquired pre-contrast, and the average of these were taken for the baseline measurement of $R_{1,\emptyset}$. Post-contrast T_1 maps were subsequently acquired every 2 min up to 60 min, yielding ~ 28 T_1 measurements. Breath-hold SASHA imaging parameters were: TE/TR 1.01/2.02 ms, FOV 360×270 cm; acquired resolution 1.88×2.50 mm, reconstructed resolution 1.88×1.88 mm, slice thickness 8 mm, acceleration factor 3 [26]. A customized SASHA protocol used 17 images for 2-parameter T_1 fitting: an initial 'equilibrium' image with no saturation pulse, followed by saturation preparation and imaging in successive heart beats: 8 each with saturation times of 200 and 400 ms [27].

Image analysis

Regions of interest (ROIs) were manually drawn within the LV and RV for all T_1 maps (typically ~ 150/60 pixels for the LV/RV), and myocardial ROIs were drawn at baseline, 4, 20 and 60 min. Plasma volume and ferumoxytol half-life was fitted from 20 to 60 min using Eq. 5 and estimation of the coefficient of determination (r^2) was performed in Matlab (Mathworks, Natick, Massachusetts, USA). V_{blood} was calculated following Eq. 7 and normalized by the animal weight to yield the final estimate in ml/kg.

Abbreviated protocols

The reference acquisition for the estimation of blood volume acquired 26 measurements (5 pre- and 21 post-contrast) spanning over 60 min. We use this data, along with Monte Carlo simulations to develop 3 optimized abbreviated acquisition strategies differing in amount of data, time span, and accuracy. A single baseline T_1 measurement was used for simulated and in vivo data.

- **Protocol #1** (1 post-contrast T_1 measurement) represents the simplest scheme in which a single T_1 measurement at 4 min post-contrast is used to estimate blood volume (similar to Pannek, et al. [11]). V_{blood} is determined directly from Eq. (3) after correction for hematocrit. Protocol #1 ignores for any time-dependence of the contrast washout and aims to acquire data at the earliest point post-administration, minimizing the overall time span of the measurement.
- **Protocol #2** (4+ post-contrast T_1 measurements) acquires an increasing number of sequential T_1 measurements starting with 20, 22 and 24 min after infusion. The additional data enables fitting, yielding for higher accuracy at the expense of time span.
- **Protocol #3** (4 post-contrast T_1 measurements) used 3 sequential measurements (at 20, 22 and 24 min) anchored by a delayed measurement acquired between 30 and 60 min. Fitting is improved in accuracy by increasing the sampling time span, at the expense of workflow.

We also simulate a protocol with timing suitable for human subjects. The simulated 'human' protocols (3+ post-contrast T_1 measurements) were composed of measurements every 2 min up to 20 min. This model assumed acute measurements would be possible in humans, given the expectation of tolerance to ferumoxytol.

To optimize the three acquisition strategies, Monte Carlo simulations were used. A model T_1 recovery curve spanning 60 min post-contrast was created based on the observations from in vivo experiments (Table 1&2): $T_{1, \emptyset}=1600$ ms, immediate post-contrast $T_1 = 230$ ms, ferumoxytol half-life = 3.4 h, $v_{Fe}=1.0$ ml, and $r_1 = 18 \text{ mM}^{-1} \text{ s}^{-1}$. Each simulation was performed 10,000 times with a T_1 standard deviation of 0.6% (taken from the experimental coefficient of variation), the resultant curves were sub-sampled and fitted following Eq. (5). The standard deviation of plasma volumes ($\sigma_{V_{plasma}}$) and goodness-of-fit (r^2) were recorded for each protocol.

Three protocols were identified through Monte Carlo modelling, and compared to in vivo plasma volume measurements using correlation and Bland-Altman analysis.

Table 1 T_1 values (mean \pm SD, $n = 12$) at baseline and after administration of a 0.7 mg/kg dose of ferumoxytol, across the measurement protocol duration for the LV blood pool, RV blood pool and myocardial tissue (myo) from the repeatability study

	T_1 Baseline (ms)	T_1 Post-ferumoxytol (ms)		
		4 min	20 min	60 min
LV	1604.2 \pm 27.7	232.0 \pm 12.3	250.6 \pm 15.7	281.4 \pm 19.7
RV	1807.9 \pm 96.8	235.9 \pm 14.5	257.1 \pm 20.3	289.0 \pm 21.7
myo	1135.0 \pm 80.2	837.2 \pm 42.9	844.5 \pm 63.3	860.1 \pm 59.3

Statistical analysis

Coefficients of variation (CV) and repeatability coefficients (RC) were calculated for the differences in normalized blood volumes between the replicate euvolemic sessions, and for the baseline T_1 , using the following equations:

$$CV = 100\% \frac{\mu}{\sigma} \quad (8)$$

$$RC = 1.96 \sqrt{\frac{\sum (x_i - \mu)^2}{n-1}} \frac{100\%}{\mu} \quad (9)$$

where the data x_i composed of n measurements had mean μ and standard deviation σ . The accuracy of the CMR blood volume technique was compared to reference measurements using CO with a non-parametric paired test (Wilcoxon), in addition to a linear regression and Bland-Altman analysis. Low-dose half-lives and blood volumes were compared against the standard dose using Mann-Whitney U tests.

Results

In vivo summary

The baseline swine weight was 41 ± 6 kg (range 35–49 kg) and mean individual deviation from baseline was 0 ± 1 kg indicating no observable change in rapidly growing animals ($p > 0.9$, one-way ANOVA) over 19 days. Mean baseline heart rate was 118 ± 7 bpm, and baseline mean arterial pressure was 72 ± 14 mmHg. Ferumoxytol induced no serious adverse reactions and mean arterial pressure and heart rate variations were 4 ± 1 mmHg and 0 ± 1 bpm respectively, averaged over 10 min.

Measurement of Relaxivity and T_1

The relaxivity r_1 of ferumoxytol in swine blood in vitro was $18.0 \pm 0.4 \text{ mM}^{-1} \cdot \text{s}^{-1}$. In vivo baseline T_1 mapping yielded a CV of $0.58 \pm 0.27\%$ and $0.90 \pm 0.63\%$ for the LV and RV, respectively, and Bland-Altman repeatability coefficients of $1.0 \pm 0.5\%$ and $1.6 \pm 1.1\%$ respectively within the LV and RV.

T_1 maps before and after administration (at 4, 20 and 60 min) of ferumoxytol can be seen in Fig. 1a, and the

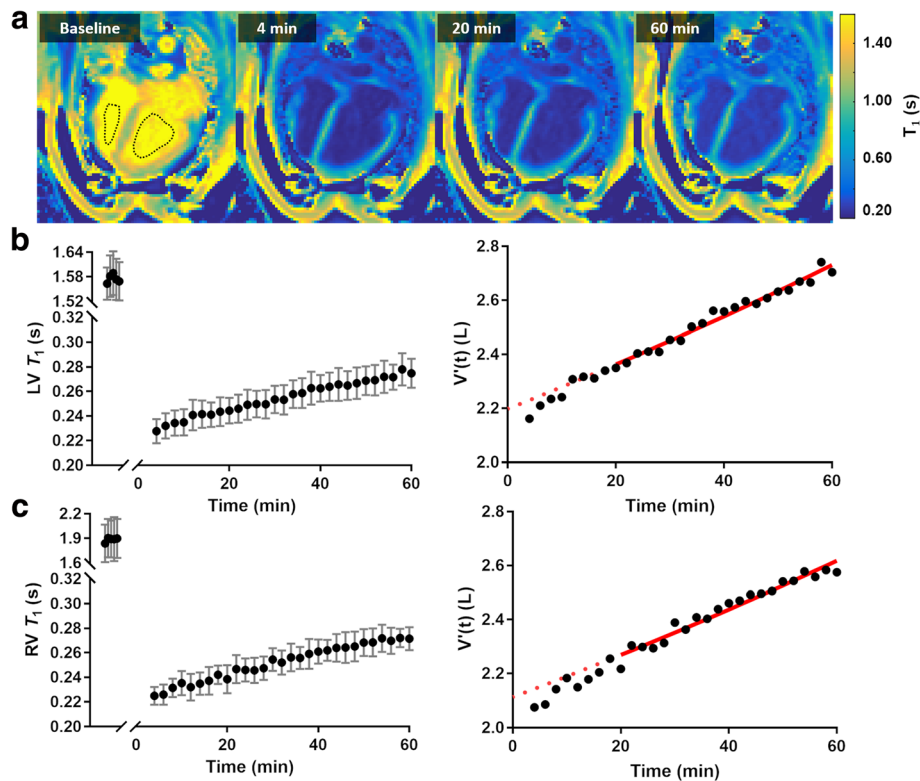


Fig. 1 a Example long-axis T_1 maps and regions-of-interest (ROI) over the duration of a study, and typical T_1 (intra-ROI mean \pm SD) recovery profile post-contrast and the corresponding volume $V(t)$, calculated from Eq. 3, for the (b) left-ventricle (LV) and paired (c) right-ventricle (RV). A linear fit from 20 to 40 min (solid line) is used to measure the half-life of the contrast agent. The plasma volume can be estimated by extrapolating to the model to 0 min (dotted line)

partial recovery in blood pool T_1 over the hour-long measurement period and the corresponding time-dependent volume estimation, as determined by Eq. 3, is shown for the LV and RV in Figs. 1b and c, respectively. A non-linear rate of contrast extraction was observed until ~ 20 min post-contrast administration, potentially due to a physiological response to ferumoxytol. Thus, fitting was constrained between 20 and 60 min (solid red line), and plasma volume estimated from the intercept (dotted line).

Estimates of blood volume were calculated separately from the LV and RV blood pools. Over the repeatability study, good adherence to the linear model was observed, with $r^2 = 0.97 \pm 0.03$ (mean \pm SD) for the LV. Fitting was marginally weaker ($r^2 = 0.94 \pm 0.10$) for the RV, reflective of the larger intra-ROI variation. The percentage confidence intervals of plasma volume were 0.57% and 0.68% for the LV and RV, respectively. Bland-Altman analysis showed the RV non-significantly over-estimated plasma volume with a mean difference of 0.05 L ($p > 0.27$, paired t-test).

Table 1 shows the T_1 values (mean \pm SD) from the repeatability study for the LV and RV blood pools, and myocardium. The LV blood pool T_1 decreased to 14.5%

of baseline after a dose of 0.7 mg/kg ferumoxytol, and over the hour exhibited a 21.3% increase from the immediate post-contrast T_1 . Myocardial T_1 reduced to 67% of the baseline and showed only a small amount of recovery at 60 min (2.7%).

Blood volume: repeatability

Over the repeatability study, mean plasma volume (V_{plasma}) was measured as 61.9 ± 4.3 ml/kg, mean blood volume (V_{blood}) was measured as 88.1 ± 9.4 ml/kg using ferumoxytol. Blood hematocrit (Hct) was $29.5 \pm 3.4\%$ and Hb concentration 9.8 ± 1.1 g/dL. The repeatability of the normalized blood volume from two visits can be seen in Fig. 2a, with a coefficient of variation of 6.9%. The measurements exhibited a mean difference of 8.6 ml/kg (9.8%) between the studies, as can be seen in Fig. 2b. A potential magnitude-dependent bias was observed, and the repeatability coefficient of the technique was calculated to be 14%.

The CO reference measurement yielded a mean blood volume of 90.8 ± 18.9 ml/kg. There was no significant difference between blood volume estimated from ferumoxytol and CO ($p = 0.67$). Bland-Altman comparison (Fig. 2c) between the CMR and CO blood volume

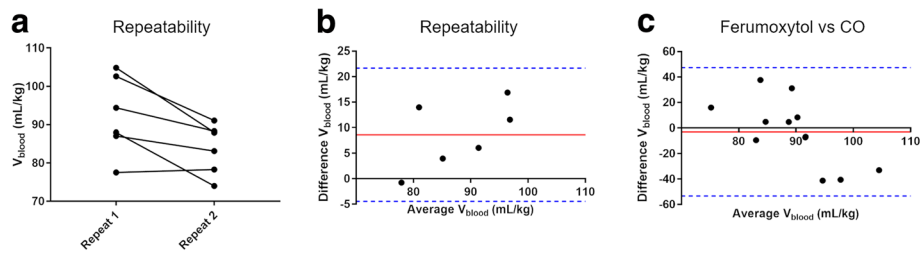


Fig. 2 Repeatability of the blood volume (V_{blood}) measurement: **a** Ladder plot between two repeat visits of $N = 6$ swine, **b** Bland-Altman comparison of technique reproducibility: mean difference and standard deviation = 8.6 ± 6.7 mL/kg, **c** Bland-Altman comparison to carbon monoxide estimates of circulating blood volume: mean difference and standard deviation = -3.0 ± 25.7 mL/kg

measurements yielded a small mean-difference (carbon monoxide was 2.7 ml/kg larger), though there is a potential trend in this data and a poor correlation $r^2 = 0.13$. The measured CV for the CO blood volume was 18% and the Bland-Altman repeatability coefficient was 32%.

Abbreviated protocols

Monte Carlo modelling of the full protocol yielded a goodness-of-fit r^2 of 0.97, matching the in vivo results, and estimated plasma volume precision as 0.54%. Simulations predicted a more precise measurement of plasma volume with increasing experiment time (Fig. 3). Propagation of error analysis (on Eq. 3) indicates that a 4% error in the measurement of T_1 (based on the observed intra-ROI standard deviation) would result in 4.7% error in the measurement of blood volume. For Protocol #2, though an increased number of acquisitions yielded improved plasma volume precision, a limit of 5 continuous measurements from 20 to 28 min was chosen for practicality, which resulted in error < 3% with a bias of 0 ml. Finally, for Protocol #3, an anchor measurement past 40 min resulted in error < 2%, with a bias of 0 ml. The proposed human protocol achieved ~ 1% error after measuring up to 6 min post-contrast (3 T_1 measurements).

Figure 4 shows the comparison of the three abbreviated protocols based on the simulated precision in blood volume. The simplest scheme - Protocol #1 yielded an r^2 of 0.98 and a Bland-Altman mean under-estimation of 0.06 L (2.4%). Protocol #2, with 5 successive measurements, yielded $r^2 = 0.97$ and a Bland-Altman mean under-estimation of 0.02 L (0.8%). Protocol #3 with 3 early measurements followed by an 'anchor' at 40 min produced an $r^2 = 0.99$ and a Bland-Altman mean under-estimation of 0.01 L (0.4%). These results suggest that all the abbreviated protocols can accurately calculate plasma volume.

Reduced dose ferumoxytol

The effects of a reduced ferumoxytol dose on the normalized change in LV T_1 from baseline, half-life estimated blood volume, and percentage difference from the

blood volume measured in the repeatability study, can all be seen in Table 2. An expected decrease in ΔT_1 was observed with smaller doses, and a significantly shorter half-life was measured across the reduced doses compared to the 0.7 mg/kg dose ($p < 0.02$, Mann-Whitney U). No significant differences in blood volume were calculated using the reduced doses ($p = 0.95$, Mann-Whitney U). Aside from the 50% dose, the estimated blood volumes were within the variability calculated by the repeatability coefficient.

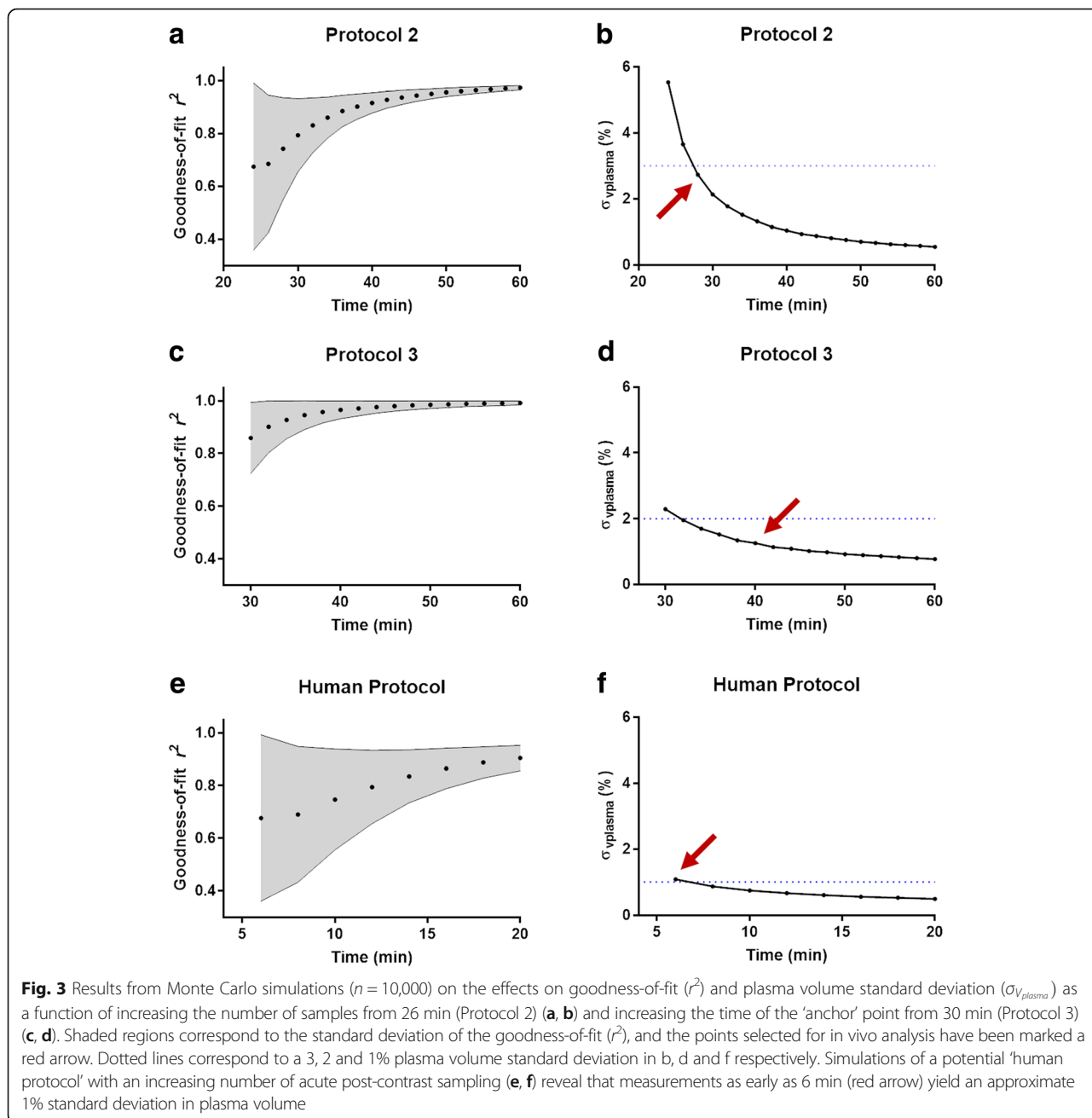
Discussion

We describe a CMR technique to measure total circulating blood volume using injected ferumoxytol and compared it with reference standard carbon monoxide inhalation in swine. We optimized the measurement strategy to propose clinical protocols requiring a maximum of 2–6 additional T_1 measurements. The technique avoids frequent blood tracer sampling, avoids radioactive or dye tracers, and uses a small dose of parenteral iron supplement that can be used for first-pass and steady state CMR angiography.

Measurement of blood volume

We found mean blood volume of 88.1 ± 9.4 ml/kg and 91.1 ± 18.9 ml/kg using ferumoxytol and carbon monoxide respectively. From Monte Carlo modelling, the calculated error in plasma volume was estimated to be 0.54% for the 60-min measurement, which suggests the method is precise. However, the values measured in this study are higher than reported blood volume values of swine (between 35 and 50 kg) range from 56 to 69 ml/kg in Yucatan swine (no weight range given) [28], 61–77 ml/kg in Chester-White [29], in 74–96 ml/kg in Duroc-Jersey swine [30], and between 56 and 68 ml/kg in Hampshire swine [31]. This variability may be in part to age and weights, it has been generally observed that older and larger swine will have a reduced normalized blood volume [31].

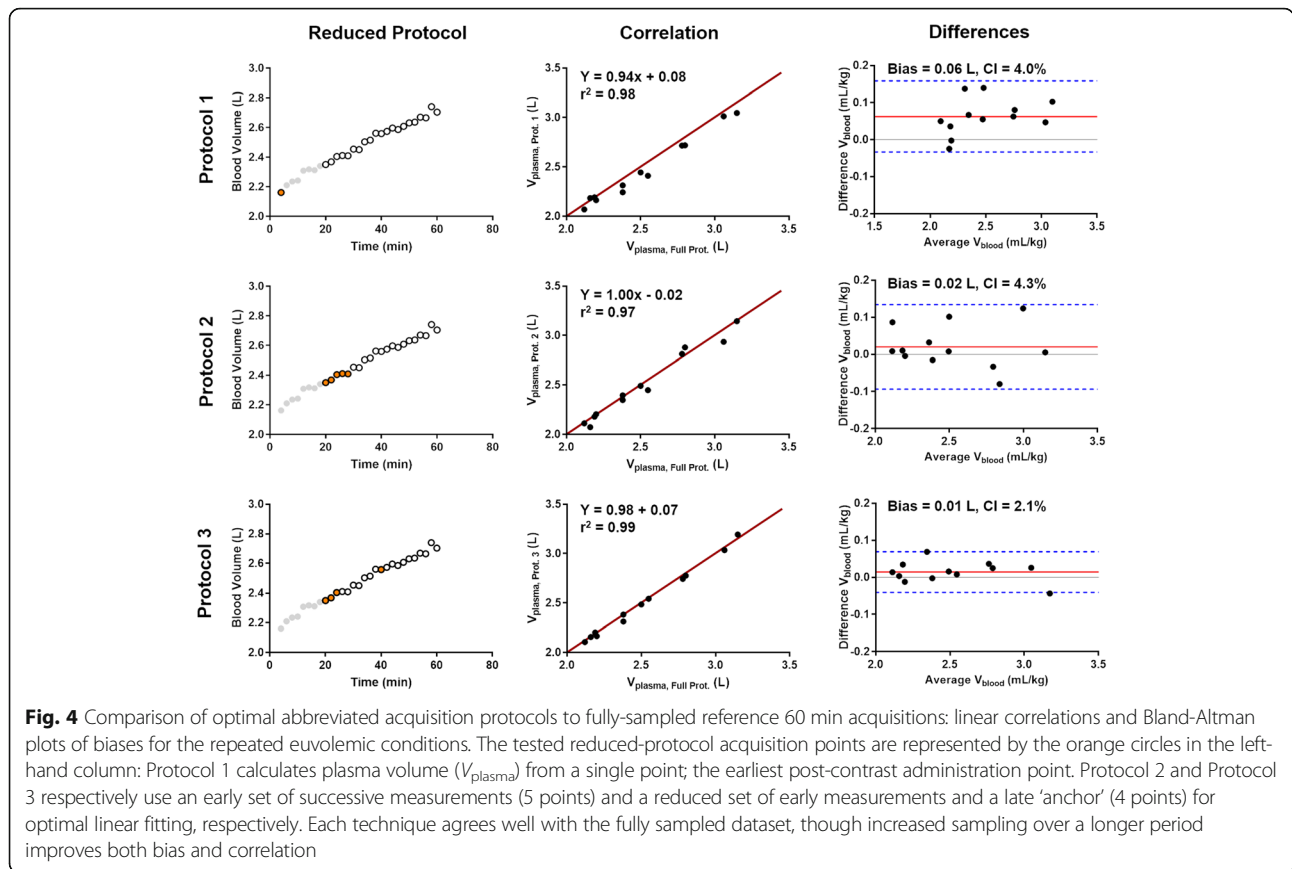
Plasma volume was measured using Eq. 3 for both the RV and LV blood pools. Though the baseline RV T_1



is higher than LV (13%), both blood pools drop to approximately the same post-contrast T_1 (2% RV/LV ratio). However, the mean difference of blood volume produced a (non-significant) 2% over-estimation, which would suggest that the post-contrast measurement is the dominant factor in volume quantification, and thus a single pre-contrast measurement is sufficient. This is confirmed by propagation of error analysis applied to Eq. 3, which indicated that a 1% error in $T_{1,0}$ and T_1 result in 0.17% and 1.81% errors in blood volume, respectively (data not shown). As the LV ROI had a higher number of pixels and yielded a smaller

intra-ROI variation, this was chosen for the repeatability analysis. Under conditions of hyperoxia, blood hemoglobin T_1 has been reported to increase [32], which is likely to be the source of left-right difference observed in this study at baseline.

In this study, the most accurate measurement of plasma volume required temporal monitoring of blood T_1 as ferumoxytol was extracted from circulation to estimate the agent's half-life through fitting. Since ferumoxytol has been reported to have a dose-dependent extraction rate (ranging from 9 to 14 h in humans) [19], assuming a half-life could lead to errors in the estimation of blood



volume. In this study, we found a comparatively short mean half-life of 3.4 ± 0.5 h, potentially due to differences in swine physiology. We measured no significant differences in blood volume at lower doses, but further work is necessary to determine the minimal dose required in humans to achieve sufficient blood volume accuracy.

The V_{plasma} quantification is proportional to the relaxivity of ferumoxytol, r_1 . Others report r_1 to be $19.0 \pm 1.7 \text{ mM}^{-1} \text{ s}^{-1}$ at 1.5 T [16], in good agreement with our $18.0 \pm 0.3 \text{ mM}^{-1} \text{ s}^{-1}$ in blood. Knobloch et al. reported a

Table 2 Comparison of measuring blood volume (V_{blood}) with reduced ferumoxytol doses ($N = 1$, for each dose) in mg/kg of iron (Fe), and percentage of the typical dose used in this study ($N = 12$). Smaller doses resulted in a reduced change in post-contrast LV T_1 , and a shorter ferumoxytol half-life, but did not produce a significantly different normalized blood volume ($p = 0.95$, Mann-Whitney U), and except for the 50% dose, the percentage differences from the blood volumes for each subject were within the calculated repeatability coefficient (14%)

Conc. Fe (mg/kg)	ΔT_1 (%)	Half-life (hr)	V_{blood} (mL/kg)	$\% \Delta V_{\text{blood}}$
0.69 ± 0.01	-85.5 ± 0.7	3.43 ± 0.49	88.1 ± 9.4	–
0.30 (50%)	– 74.6	2.55	79.9	–17.5
0.23 (20%)	– 65.9	2.93	95.4	12.1
0.13 (10%)	–53.9	2.51	86.2	–5.7

non-linear behavior of relaxivity in blood, particularly at higher concentrations ($> 1 \text{ mM}$), which we avoided to minimize the effect of T_2^* dephasing. As ferumoxytol relaxivity is dependent on field strength, to achieve the same ΔT_1 , a higher dose of ferumoxytol would be required at 3 T [16]. Further investigation is required to characterize the accuracy of the blood volume measurements with low doses ($< 1 \text{ mg/kg}$) of Ferumoxytol, as some variability was measured here. Additional measurements are required to see any effects on sensitivity at higher, more clinical doses (2–6 mg/kg), particularly due to non-linear effects on relaxivity at higher concentrations.

Sources of error

The repeatability coefficient of porcine blood volume measured by ferumoxytol was 14%, which is higher than previous values of 8% using a ^{131}I tracer [4]. Small inaccuracies in the ferumoxytol-based estimate may be introduced from error in the administered volume and T_1 variation due to heart rate changes over the imaging session.

The calculated Bland-Altman repeatability coefficient of the CO technique (32%) was higher here than previous implementations 0.8–2.7% [8, 33, 34]. The potential sources of error in measuring blood volume with CO

have been described [8, 35], but in our lab additional sources of error could include manually rebreathing anesthetized animals, systematic differences in measuring porcine COHb on a human blood-gas analyzer [36], and variability in the CO detector's measurements of the remnant volume in the spirometer (coefficient of variation $25.3 \pm 10.2\%$).

Abbreviated protocols for clinical implementation

Abbreviated protocols yielded small biases (between 0.4–2.4%) and strong correlations ($r^2 = 0.97–0.99$) to the reference 60 min experiment. The chosen abbreviated protocols yielded plasma volume repeatability coefficients of 9%, 14%, and 12% for protocols 1, 2 and 3, respectively.

Each protocol has advantages and disadvantages depending on the time constraints of a CMR exam. The most accurate and precise technique, Protocol #3, requires a 'late' measurement at 40 min post-contrast to improve the fit. This measurement improves as this acquisition moves later in time, but a prolonged measurement becomes unfeasible. The single post-contrast measurement, Protocol #1, is the fastest measurement, but is dependent on an immediate acquisition, and having a very accurate and precise T_1 measurement. A short cluster of five measurements, Protocol #2, combine speed and the accuracy of longitudinal fitting. Protocols #2&3 are not dependent on two-minute interval acquisitions, thus by alternating a post-contrast T_1 acquisition with standard diagnostic scans, these methods can be integrated in to a CMR workflow and could achieve higher accuracy and precision by broadening the measurement period.

The additional imaging time required to measure blood volume with these protocols are minor: one baseline and 1–5 post-contrast T_1 maps. We anticipate that with short, breath-held T_1 scans (~11 s), any of the abbreviated protocols, including the contrast administration, will require no more than 5 min of additional time to a CMR exam. A free-breathing T_1 mapping technique (e.g. [37]) may be preferable to avoid repeated breath-held acquisitions, though each may take up to 60 s, and free-breathing techniques may yield an increase in T_1 reproducibility.

Protocol 2 was optimized starting from 20 min given the non-linear acute behavior observed in swine, but we anticipate ferumoxytol will be better tolerated in humans, therefore T_1 measurements could begin earlier. Modelling of this acute 'human' protocol (Fig. 3e-f) predicts that an accurate (0 L bias) and precise (~1% error) blood volume measurement could be achieved within a total experiment time (baseline, injection and post-contrast) of 8 min. In addition, as clinical dose of Ferumoxytol yield longer half-lives, a protocol with a few repeats post-contrast may

also be feasible which do not require temporal fitting – however, further work is required to validate this.

Limitations

Ferumoxytol, in higher iron replacement doses, has been associated with reported 0.2% incidence of anaphylactoid reactions and carries a black box warning from the US Food and Drug Administration [38]. The incidence and seriousness appear to be dose- and infusion-rate-dependent, and is probably lower in clinical practice [39–42].

We found Yorkshire and Sinclair mini swine breeds did not tolerate ferumoxytol (data not shown), but that with glucocorticoid and antihistamine premedication and prolonged 2-min infusion, Yucatan mini-swine tolerated ferumoxytol. We studied only healthy swine and not animals exhibiting neurohormonal perturbations characteristic of heart failure.

Finally, the reference CO measurement had much larger variability than previously reported in humans. Though the mean blood volume estimates agreed reasonably with the CMR measurements, there was a low correlation between these values, and therefore difficult to isolate animal variability from the repeatability of each technique.

Conclusion

Ferumoxytol CMR can be used to measure plasma and total blood volume in vivo in swine, with comparable precision and accuracy to reference standard CO rebreathing methods. We design abbreviated acquisition protocols using Monte Carlo simulations and validate in vivo relative to a reference examination. These shorter acquisitions could provide estimates of blood volume in 8 min. Though the clinical value of direct blood volume measurements remains to be established, it may prove useful in the evaluation and management of heart failure and volume overload states as part of standard ferumoxytol-enhanced CMR.

Abbreviations

CA: Contrast agent; CMR: Cardiovascular magnetic resonance; CO: Carbon monoxide; COHb: Carboxyhemoglobin; CV: Coefficient of variation; Fe: Iron; Hb: Hemoglobin; Hct: Hematocrit; LV: Left ventricle/left ventricular; RC: Bland-Altman repeatability coefficient; ROI: Region of interest; RV: Right ventricle/right ventricular; SASHA: SATuration-recovery single-SHOT Acquisition; SD: Standard deviation; V_{blood} : Total blood volume; V_{plasma} : Plasma blood volume

Acknowledgements

The authors thank Dr. Benjamin D. Levine of University of Texas Southwestern Medical Center for providing contemporary carbon monoxide rebreathing methodology. We thank Katherine Lucas and Shawn Kozlov from the NHLBI Division of Intramural Research Animal Surgery and Resources Core, and William H. Schenke from the NHLBI Division of Intramural Research Cardiovascular Branch for their assistance with in vivo experiments.

Funding

This work was supported by the Division of Intramural Research, National Heart, Lung, and Blood Institute, National Institutes of Health, Bethesda, Maryland, USA (Z01-HL005062, Z01-HL006061, Z1A-HL006213).

Availability of data and materials

The datasets generated during and/or analyzed during the current study are available from the corresponding author on reasonable request.

Authors' contributions

The study was conceived by RJL, TR, AZF, RR, ACW, and DAH. RR, MAA, DRM, JMK, AZF and DAH performed data acquisition and analysis. PK and HX provided pulse sequences and in-line quantification toolboxes. Manuscript was drafted by RR and DAH and revised by ACW and RJL. All authors approved the final manuscript.

Ethics approval and consent to participate

Not applicable.

Consent for publication

Not applicable.

Competing interests

The authors declare that they have no competing interests.

Publisher's Note

Springer Nature remains neutral with regard to jurisdictional claims in published maps and institutional affiliations.

Received: 15 June 2018 Accepted: 20 August 2018

Published online: 10 September 2018

References

- Miller WL, Mullan BP. Understanding the heterogeneity in volume overload and fluid distribution in decompensated heart failure is key to optimal volume management: role for blood volume quantitation. *JACC Heart Fail*. 2014;2(3):298–305.
- Cody RJ, et al. Sodium and water balance in chronic congestive heart failure. *J Clin Invest*. 1986;77(5):1441–52.
- Yancy CW, et al. 2013 ACCF/AHA guideline for the management of heart failure: executive summary: a report of the American College of Cardiology Foundation/American Heart Association Task Force on practice guidelines. *Circulation*. 2013;128(16):1810–52.
- Miller WL, Mullan BP. Volume overload profiles in patients with preserved and reduced ejection fraction chronic heart failure: are there differences? A pilot study. *JACC Heart Fail*. 2016;4(6):453–9.
- Feldschuh J, Enson Y. Prediction of the normal blood volume. Relation of blood volume to body habitus. *Circulation*. 1977;56(4 Pt 1):605–12.
- Eisenberg S. The effect of congestive heart failure on blood volume as determined by radiochromium-tagged red cells. *Circulation*. 1954;10(6):902–11.
- Kalra PR, et al. The regulation and measurement of plasma volume in heart failure. *J Am Coll Cardiol*. 2002;39(12):1901–8.
- Garvican LA, et al. Carbon monoxide uptake kinetics of arterial, venous and capillary blood during CO rebreathing. *Exp Physiol*. 2010;95(12):1156–66.
- Margoulef D. Blood volume determination, a nuclear medicine test in evolution. *Clin Nucl Med*. 2013;38(7):534–7.
- Manzone TA, et al. Blood volume analysis: a new technique and new clinical interest reinvigorate a classic study. *J Nucl Med Technol*. 2007;35(2):55–63. quiz 77, 79.
- Pannek K, et al. Contrast agent derived determination of the total circulating blood volume using magnetic resonance. *MAGMA*. 2012;25(3):215–22.
- Aime S, Caravan P. Biodistribution of gadolinium-based contrast agents, including gadolinium deposition. *J Magn Reson Imaging*. 2009;30(6):1259–67.
- Kanda T, et al. High signal intensity in the dentate nucleus and globus pallidus on unenhanced T1-weighted MR images: relationship with increasing cumulative dose of a gadolinium-based contrast material. *Radiology*. 2014;270(3):834–41.
- Errante Y, et al. Progressive increase of T1 signal intensity of the dentate nucleus on unenhanced magnetic resonance images is associated with cumulative doses of intravenously administered gadodiamide in patients with normal renal function, suggesting dechelation. *Investig Radiol*. 2014;49(10):685–90.
- McDonald RJ, et al. Intracranial gadolinium deposition after contrast-enhanced MR imaging. *Radiology*. 2015;275(3):772–82.
- Knobloch G, et al. Relaxivity of Ferumoxytol at 1.5 T and 3.0 T. *Invest Radiol*. 2018;53(5):257–63.
- Reeder SB, Smith MR, Hernando D. Mathematical optimization of contrast concentration for T1-weighted spoiled gradient echo imaging. *Magn Reson Med*. 2016;75(4):1556–64.
- Corot C, et al. Recent advances in iron oxide nanocrystal technology for medical imaging. *Adv Drug Deliv Rev*. 2006;58(14):1471–504.
- Landry R, et al. Pharmacokinetic study of ferumoxytol: a new iron replacement therapy in normal subjects and hemodialysis patients. *Am J Nephrol*. 2005;25(4):400–10.
- Bircher AJ, Auerbach M. Hypersensitivity from intravenous iron products. *Immunol Allergy Clin N Am*. 2014;34(3):707–23. x-xi
- Bashir MR, et al. Emerging applications for ferumoxytol as a contrast agent in MRI. *J Magn Reson Imaging*. 2015;41(4):884–98.
- Schmidt W, Prommer N. The optimised CO-rebreathing method: a new tool to determine total haemoglobin mass routinely. *Eur J Appl Physiol*. 2005;95(5–6):486–95.
- Gorelov V. Theoretical value of Hufner's constant. *Anaesthesia*. 2004;59(1):97.
- Holverda S, et al. Measuring lung water: ex vivo validation of multi-image gradient echo MRI. *J Magn Reson Imaging*. 2011;34(1):220–4.
- Wald NJ, et al. Carbon monoxide in breath in relation to smoking and carboxyhaemoglobin levels. *Thorax*. 1981;36(5):366–9.
- Kellman P, Hansen MS. T1-mapping in the heart: accuracy and precision. *J Cardiovasc Magn Reson*. 2014;16:2.
- Kellman P, et al. Optimized saturation recovery protocols for T1-mapping in the heart: influence of sampling strategies on precision. *J Cardiovasc Magn Reson*. 2014;16:55.
- Wolfensohn S, Lloyd M. Handbook of laboratory animal management and welfare. 4th ed. Chichester: Wiley-Blackwell. xv; 2013. p. 371.
- Jensen WN, et al. The kinetics of iron metabolism in normal growing swine. *J Exp Med*. 1956;103(1):145–59.
- Burke JD. Blood volume in mammals. *Physiol Zool*. 1954;27(1):1–21.
- Hansard SL, Sauberlich HE, Comar CL. Blood volume of swine. *Proc Soc Exp Biol Med*. 1951;78(2):544–5.
- Silvennoinen MJ, Kettunen MI, Kauppinen RA. Effects of hematocrit and oxygen saturation level on blood spin-lattice relaxation. *Magn Reson Med*. 2003;49(3):568–71.
- Gore CJ, Hopkins WG, Burge CM. Errors of measurement for blood volume parameters: a meta-analysis. *J Appl Physiol* (1985). 2005;99(5):1745–58.
- Burge CM, Skinner SL. Determination of hemoglobin mass and blood volume with CO: evaluation and application of a method. *J Appl Physiol* (1985). 1995;79(2):623–31.
- Prommer N, Schmidt W. Loss of CO from the intravascular bed and its impact on the optimised CO-rebreathing method. *Eur J Appl Physiol*. 2007;100(4):383–91.
- Serianni R, et al. Porcine-specific hemoglobin saturation measurements. *J Appl Physiol* (1985). 2003;94(2):561–6.
- Chow K, et al. Robust free-breathing SASHA T1 mapping with high-contrast image registration. *J Cardiovasc Magn Reson*. 2016;18(1):47.
- Pharmaceuticals, A, Feraheme package insert. 2018.
- Nguyen KL, et al. MRI with ferumoxytol: a single center experience of safety across the age spectrum. *J Magn Reson Imaging*. 2017;45(3):804–12.
- Ning P, et al. Hemodynamic safety and efficacy of ferumoxytol as an intravenous contrast agents in pediatric patients and young adults. *Magn Reson Imaging*. 2016;34(2):152–8.
- Muehe AM, et al. Safety report of Ferumoxytol for magnetic resonance imaging in children and young adults. *Investig Radiol*. 2016;51(4):221–7.
- Varallyay CG, et al. What does the boxed warning tell us? Safe practice of using Ferumoxytol as an MRI contrast agent. *AJNR Am J Neuroradiol*. 2017;38(7):1297–302.