



Integrin $\beta 3$ Is Required in Infection and Proliferation of Classical Swine Fever Virus

Weiwei Li¹, Gang Wang², Wulong Liang¹, Kai Kang¹, Kangkang Guo¹, Yanming Zhang^{1*}

1 College of Veterinary Medicine, Northwest A&F University, Yangling, Shaanxi, China, **2** Jiangsu Key Laboratory of Biological Cancer Therapy, Xuzhou Medical College, Xuzhou, Jiangsu, China

Abstract

Classical Swine Fever (CSF) is a highly infectious fatal pig disease, resulting in huge economic loss to the swine industry. Integrins are membrane-bound signal mediators, expressed on a variety of cell surfaces and are known as receptors or co-receptors for many viruses. However, the role of integrin $\beta 3$ in CSFV infection is unknown. Here, through quantitative PCR, immunofluorescence (IFC) and immunocytochemistry (ICC), we revealed that ST (swine testicles epithelial) cells have a prominent advantage in CSFV proliferation as compared to EC (swine umbilical vein endothelial cell), IEC (swine intestinal epithelial cell) and PK (porcine kidney epithelial) cells. Meanwhile, ST cells had remarkably more integrin $\beta 3$ expression as compared to EC, IEC and PK cells, which was positively correlated with CSFV infection and proliferation. Integrin $\beta 3$ was up-regulated post CSFV infection in all the four cell lines, while the CSFV proliferation rate was decreased in integrin $\beta 3$ function-blocked cells. ShRNA1755 dramatically decreased integrin $\beta 3$, with a deficiency of 96% at the mRNA level and 80% at the protein level. CSFV proliferation was dramatically reduced in integrin $\beta 3$ constantly-defected cells (ICDC), with the deficiencies of 92.6%, 99% and 81.7% at 24 h, 48 h and 72 h post CSFV infection, respectively. These results demonstrate that integrin $\beta 3$ is required in CSFV infection and proliferation, which provide a new insight into the mechanism of CSFV infection.

Citation: Li W, Wang G, Liang W, Kang K, Guo K, et al. (2014) Integrin $\beta 3$ Is Required in Infection and Proliferation of Classical Swine Fever Virus. PLoS ONE 9(10): e110911. doi:10.1371/journal.pone.0110911

Editor: Lucia R. Languino, Thomas Jefferson University, United States of America

Received: July 21, 2014; **Accepted:** September 24, 2014; **Published:** October 23, 2014

Copyright: © 2014 Li et al. This is an open-access article distributed under the terms of the Creative Commons Attribution License, which permits unrestricted use, distribution, and reproduction in any medium, provided the original author and source are credited.

Data Availability: The authors confirm that all data underlying the findings are fully available without restriction. All relevant data are within the paper.

Funding: This project is supported by the National Natural Science Foundation of China (No. 31172339). URL: <http://www.nsf.gov.cn/nsfc/cen/xmzn/2014xmzn/index.html>. The funders had no role in study design, data collection and analysis, decision to publish, or preparation of the manuscript.

Competing Interests: The authors have declared that no competing interests exist.

* Email: zhangym@nwsuaf.edu.cn

Introduction

Classical swine fever virus (CSFV) causing the disease of “classical swine fever (CSF)”, is a member of the Flaviviridae family which also contains Dengue fever virus, West Nile virus (WNV) and Hepatitis C virus. CSFV leads to huge economic loss in the swine industry as CSF causes problems characterized by high fever, alternating constipation, diarrhea and high mortality [1,2]. Transmission of this virus mainly depends on contact spread, but recent investigations indicated that infected boars could transmit CSFV in semen as well [3,4]. This disease was first identified in USA during a continuous major nationwide epizootics, and was subsequently found in many other countries [5,6]. The last major CSF epidemic in European Union occurred mainly in Netherlands and to a lesser extent in Germany, Italy, Belgium and Spain [7,8]. Considering its rapid speed in spreading across national borders, and the huge socio-economic damage to the porcine industry, CSF was classified as a notifiable disease by OIE [9].

CSFV entry into the host cell is through the receptor-mediated interaction of virus with cell membrane. Receptors for CSFV recognition are crucial for host antiviral immune responses [10]. Thus blocking CSFV receptors could be an effective way to control CSFV. Glycoprotein E (gpE), presented on the flaviviral particle surface has a conservative spatial structure [11]. It is thought to interact with cell surface receptors during the early

stage of virus infection. Research done by Bogachek, demonstrated that the gpE domain III from WNV interacts with integrin $\alpha\beta 3$ at an initial stage of entry into the host cells [12]. However, specific function of integrin in CSFV infection has not yet been reported.

Integrins are heterodimeric trans-membrane adhesion molecules comprising a family of non-covalently linked 18 α and 8 β subunits [13–15]. It is also known that integrins play various roles in cell adhesion, migration, embryonic development, angiogenesis, tumor metastasis, immune responses and wound healing [16,17]. Specifically, integrin $\beta 3$, which is present on a variety of cell surfaces, is one of the most important cell receptors. Integrin $\beta 3$ mediates extracellular signals by recognizing and delivering different molecules into cells, resulting in changes in calcium, Pyk2 (proline-rich tyrosine kinase 2) and PI-3K (Phosphoinositide 3-kinase) activity [18–26]. The activation and communication between PI-3K and internal calcium are crucial for integrin outside-in signaling. More importantly, integrin $\beta 3$ is known to be a receptor or co-receptor for many viruses, such as Rotavirus [27–30], Hantavirus [31–33], and Foot-and-mouth disease virus [34,35]. It also plays a key role in infection processes of Adenovirus [36,37], West Nile Virus [32], Human immunodeficiency virus [38,39], Human Parecho virus [40–42], and Herpes simplex virus type 1 [43–45]. Furthermore, previous studies from our laboratory have shown that integrin $\beta 3$ is up-regulated in endothelial cells post CSFV infection (post CSFV infection = p.i.) [46].

Table 1. Primers used in this paper.

Primers	Sequence (5'-3')
S-CSFV F	ACTAATACGACGACTATAGGGGCTTTCCACCAGGACTACAT
S-CSFV R	TTTTTTTTTTTTTTTTTTTTTTTTCAGGGTCTTGCTCAC
CSFV F	GTTCTGCGAGGTGACCAAAAG
CSFV R	GATGCACACATAAGTATGGTAAAGC
CSFV Probe	(FAM) TCCGTCGCTACCTGTCCACCTACCT (Eclipse)
β 3 qPCR F	CCATGATCGGAAGGAGTTTGCT
β 3 qPCR R	AAGGTGGATGTGGCCTCTTTATAC
β -actin F	CGTCCACC GCAATGCTTC
β -actin R	AACCGACTGCTGT CACCTTCAC

doi:10.1371/journal.pone.0110911.t001

Even though integrin is a demonstrated receptor or co-receptor for many viruses, little is known about the role of integrin in CSFV infection. Here, we demonstrate that integrin β 3 is positively correlated with CSFV infection and proliferation, especially in ST cells. Functional-blocking or shRNA-mediated depletion of integrin β 3 in EC cells dramatically decreased the rate of CSFV proliferation. This study also adds another receptor-function of integrin β 3 and provides the first insight of a promising active receptor for CSFV infection. Furthermore, our results suggest that targeted inhibition or depletion of integrin β 3 could be a potential therapeutic treatment for CSFV infection.

Materials and Methods

1 Cell lines, reagents and CSFV infection

EC (swine umbilical vein endothelial cell) [47] and IEC (swine intestinal epithelial cell) [48] were immortalized porcine cell lines established and stored by our lab (Yanming, Zhang lab). PK (or PK-15, porcine kidney epithelial) [49] and ST [50] (swine testicles epithelial) cells were gifts from Harbin Veterinary Research Institute, Chinese Academy of Agricultural Sciences. SYBR Premix Ex Taq II (Perfect Real Time), Prime Script RT reagent kit with gDNA Eraser (Perfect Real Time) and One-step Prime Script RT-PCR kit (Perfect Real Time) were purchased from Takara (Dalian, China). Minimum Essential Medium (MEM) and G418 were products of Gibco (Carlsbad, CA, USA). Fetal calf serum was purchased from Hyclone (Logan, Utah, USA). Lipofectamine 2000 and Trizol reagent were from Invitrogen, Inc. (Carlsbad, CA). CSFV infected serum was a gift from Lanzhou Veterinary Research Institute. Mouse-anti-swine integrin β 3 monoclonal antibody was purchased from Accurate chemical & scientific corporation (NY, USA). Horseradish peroxidase-conjugated goat anti-mouse IgG was purchased from Santa Cruz Bio. (USA).

Cells for all assays relating to CSFV infection were cultured to a confluent of 60% in 35 mm cell-culture dishes in MEM containing 10% fetal serum and then incubated with 1.5 ml CSFV liquid (100 CCID₅₀/0.1 ml) at 37°C, 5% CO₂ for 1 h. Subsequently, supernatant was discarded and the CSFV incubated cells were washed with fresh MEM to remove the unattached virions before the further cultivation in the final culture medium of MEM with 2% fetal serum at 37°C, 5% CO₂.

2 One-step qRT-PCR and two-step qPCR

To establish the standard curve for one-step qRT-PCR, a 242-bp DNA was synthesized through PCR using standard primers of

S-CSFV F and S-CSFV R (Table 1), designed based on CSFV coding sequence (GenBank accession number: AF091507.1). The standard CSFV RNA was obtained through reverse transcription from the synthesized 242-bp DNA, and then was quantified by Nano-Drop (ND-1000). The following formula: Copy number (copies/ml) = 6.02×10^{23} (copies/mol) \times concentration (g/ml) / MW (g/mol) (MW = RNA length \times 340 u) was used to calculate the amount of standard CSFV RNA. Thereafter the standard CSFV RNA was diluted in gradient liner ranging from 10⁰ to 10⁸, and was used as normalized RNA samples to establish standard curve for one-step qPCR assay. One-step qRT-PCR was performed using One-step Prime Script RT-PCR kit (Perfect Real Time) in Thermal Cycler Dice Real Time System (Takara Bio., Dalian, China). The reaction mixture includes: 2 \times one-step RT-PCR Buffer III, 12.5 μ l; TaKaRa Ex Taq HS (5 U/ μ l), 0.5 μ l; Prime Script RT Enzyme Mix II, 0.5 μ l; PCR forward primer (10 μ M), 0.5 μ l; PCR reverse primer (10 μ M), 0.5 μ l; probe (10 μ M), 0.5 μ l; total RNA, 2 μ g; RNase free H₂O, added to 20 μ l. One-step qRT-PCR assay was performed in a total volume of 25 μ l using the recommended thermo cycling protocol with 42°C (reversely transcribe) for 20 min; 95°C (pre-denature) for 30 sec; followed by 35 cycles of 95°C (denature) for 15 sec, 57°C (anneal) for 20 sec, 72°C (extend) for 15 sec.

For two-step qPCR, primers of CSFV F and CSFV R (table 1) for CSFV quantification were designed based on CSFV coding sequence (GenBank accession number: AF091507.1) and primers of β -actin F and β -actin R (table 1) for house keeping gene of β -actin were designed based on the porcine β -actin coding sequence (GenBank accession number: DQ845171). Total RNA from different samples was harvested with Trizol reagent and was reversely transcribed to cDNA by using Prime Script RT reagent kit with gDNA Eraser (Perfect Real Time) (Takara Bio., Dalian, China). Reaction for reverse transcription was proceeded according to manufacturer's instruction with the following procedures: 42°C (gDNA remove) for 2 min; 37°C (reversely transcribe) for 30 min; 85°C (inactive the reverse transcriptase) for 5 sec. Two-step qPCR was performed using SYBR Premix Ex Taq II (Perfect Real Time) in Thermal Cycler Dice Real Time System (Takara Bio., Dalian China) with the following procedures: 95°C (denature) for 3 min followed by 35 cycles of 95°C (denature) for 10 sec; 60°C (anneal) for 20 sec and 72°C (extend) for 20 sec. Fluorescence signal was auto-collected by Thermal Cycler at the end of each cycle. The individual sample was normalized for genome equivalents using the respective CT value of porcine β -actin. CT value stands for the minimum cycle number for the

Thermal Cycler to reach the pre-set value of each tube's fluorescence signal.

3 Evaluation of CSFV proliferation amount

For assessment of CSFV proliferation amount in cell-culture liquid, one-step qRT-PCR was used. Basically, samples of cell-culture liquid from four cell lines with CSFV challenge for different time periods (24 h, 48 h and 72 h) were harvested respectively. Subsequently, the amount of CSFV virions in cell-culture liquid from each group was assessed using one-step qRT-PCR as described in section 2 of materials and methods.

For evaluation of CSFV proliferation amount inside of the cells, two-step qPCR was used. Basically, total RNA from the four cell lines with CSFV challenge for 24 h, 48 h or 72 h were harvested and extracted as described before (section 2 of materials and methods). Procedures for the subsequent reverse transcription and two-step qPCR were the same with that mentioned in section 2 of materials and methods.

4 Immunofluorescence (IFC) and immunocytochemistry (ICC) assay

Cells challenged with CSFV for 24 h, 48 h and 72 h were fixed with 4% paraformaldehyde at room temperature (RT) for 20 min, followed by triple washing with phosphate-buffered saline (PBS). Then samples were treated with 0.1% triton X-100 for 10 min at RT and were subjected to another triple washing with PBS before blocking with 1% BSA for 1.5 h at RT. After the removal of BSA, another round of triple washing with PBS was followed. Subsequently, CSFV-infected swine serum was added as primary antibody to these prepared samples and incubated at 4°C overnight. After discarding the primary antibody, washing with PBS was performed three more times. Secondary antibody of horseradish peroxidase-conjugated goat anti-swine IgG (H+L) (Earthox, USA) for ICC and goat anti-swine IgG-FITC (5-isothiocyanato fluorescein) (Santa cruz Bio., USA) for IFC was then added to the primary-antibody labeled samples. After the incubation with secondary antibody at RT for 2 h, triple washing with PBS was followed. Subsequently, samples for IFC were observed under fluorescence microscope (Nikon Eclipse Ti), while samples for ICC were stained with AEC kit (BD Bio., USA) and then pictured under white light by Nikon Eclipse TE2000-U.

5 Quantitation of integrin $\beta 3$ in CSFV-infected and CSFV-free cell lines

To evaluate the mRNA amount of integrin $\beta 3$, two-step qPCR was performed using primers of $\beta 3$ qPCR F and $\beta 3$ qPCR R (Table 1) designed based on the swine integrin $\beta 3$ coding sequence (GenBank accession number: AF282890.1). Briefly, total RNA from four cell lines with or without CSFV infection were extracted and reversely transcribed to cDNA as mentioned in section 2 of materials and methods. Reaction procedure for two-step qPCR was also the same as mentioned in section 2 of materials and methods.

6 Trypsin-digestion adhesion assay

To reveal the different adhesion abilities of the four cell lines, trypsin-digestion adhesion assay was performed. Basically, four cell lines were individually cultured to a density of 90% confluence in six-well plates one day before the digestion. Cells were then incubated with trypsin solution for 2 min at 37°C and observed using Nikon Eclipse Ti microscope. Trypsin solution was prepared by dissolving 0.25 g trypsin powder into 100 ml PBS.

7 Cell replication assay

Cell replication rates of four cell lines (EC, IEC, PK and ST) were evaluated by MTT assay. About 1×10^4 cells were seeded into 96-well plates. After the cultivation for 12 h, 24 h, 48 h or 72 h, 20 μ l MTT (5 mg/ml) was added to each well and incubated for an additional 2 h at 37°C. The culture medium was then replaced with DMSO (100 μ l/well). Subsequently, absorbance value was evaluated at 570 nm by plate reader of Multiskan FC Microplate Photometer (Thermo scientific, USA).

8 Evaluation of CSFV proliferation rate in integrin $\beta 3$ function-blocked cell

EC cells were incubated with mouse-anti-swine integrin $\beta 3$ monoclonal antibody for 2 h to functionally block integrin $\beta 3$ before CSFV challenge. In parallel, EC cells pre-incubated with non-specific IgG and infected with CSFV was set as the negative control group. After discarding the monoclonal antibody or non-specific IgG, cells were then washed with PBS and infected with CSFV following the protocol as mentioned in section 1 of materials and methods. RNA samples from cells incubated with monoclonal antibody or non-specific IgG for 24 h, 48 h or 72 h p.i. were then extracted and reversely transcribed to cDNAs. Two-step qPCR was used to evaluate CSFV proliferation in these antibody-pretreated cells (detailed procedure for reversely transcription and two-step qPCR were the same as that mentioned in section 2 of materials and methods.).

9 Establishment of integrin $\beta 3$ constantly-defected cell (ICDC) and integrin $\beta 3$ deficiency evaluation

To knockdown mRNA of integrin $\beta 3$, four shRNA constructs (976, 1110, 1755 and nc, detailed sequence information can be found in Table 2) were synthesized by Gene Pharma (Shanghai, China). Nc construct generating none of any RNA hairpins was also designed as the negative control. All these constructs contain Neomycin and GFP genes, which are respectively responsible for G418-dependent cell selection and transfection-efficiency reporting.

To obtain ICDC, G418-dependent cell selection was performed. G418 is an aminoglycoside antibiotic used in cell selection to remove the non-transfected cell without Neomycin gene expression. In our EC-cell-based selection, 1 mg/ml of G418 worked out as an optimal condition resulting in more than 80% mortality of the non-transfected cells without affecting the transfected ones. Cells with shRNA or nc constructs transfected were cultured in the medium containing 1 mg/ml of G418 for at least 2 weeks. Then cells with fluorescence were passaged and seeded into 24-well plates. One week later, mono-colony cells with fluorescence formed small cell spots. At least 5 cell spots per well were picked up and seeded to a new 24-well plate. After another round of selection with G418 for at least 2 weeks, single spot of mono-colony cell was subjected to large-scale cultivation and was assessed according to the fluorescence density. Cells would subject to another round of selection until their fluorescence density reach 98% purity.

Two-step qPCR was used to determine the deficiency-efficiency on integrin $\beta 3$ in ICDC or the cells with shRNA transiently transfected. Procedures for RNA extraction and reverse transcription as well as the system of two-step qPCR were the same as that mentioned in section 2 of materials and methods.

Table 2. Parameters of the shRNAs.

Classification	Sequence
976 target	GCTGATAACTGAGAAGCTATC
976 shRNA	GCTGATAACTGAGAAGCTATCTTCAAGAGAGATAGCTTCTCAGTTATCAGCTTTTT
1110 target	GCAATGTCCTCCAGCTCATTG
1110 shRNA	GCAATGTCCTCCAGCTCATTGTTCAAGAGACAATGAGCTGGAGGACATTGCTTTTT
1755 target	GGACTGGCTTCTACTGCAACT
1755 shRNA	GGACTGGCTTCTACTGCAACTTCAAGAGAAGTTGACAGTAGAAGCCAGTCTTTTT
nc target	GTTCTCCGAACGTGTCACGT
nc shRNA	GTTCTCCGAACGTGTCACGTCAAGAGATTACGTGACACGTTCCGAGAATTTTT

doi:10.1371/journal.pone.0110911.t002

10 Evaluation of CSFV proliferation rate in integrin $\beta 3$ function-blocked cell and ICDC

ICDC and integrin $\beta 3$ function-blocked cells were infected by CSFV (refer to section 1 of materials and methods for detailed procedure of CSFV infection). Meanwhile, EC cells with non-specific IgG incubated or ICDC with nc construct constantly expressed were set as the negative control and infected by CSFV. RNA samples from these cells with CSFV challenge for 24 h, 48 h or 72 h were extracted and reversely transcribed to cDNA as mentioned in section 2 of materials and methods. Subsequently, two-step qPCR was used to evaluate CSFV proliferation rate in ICDC or integrin $\beta 3$ function-blocked cells.

11 Western blot

Cells from four cell lines and ICDC were harvested and pelleted by centrifugation at $1,000 \times g$ for 5 min at 4°C . The cells were washed once with PBS, and resuspended in lysis buffer that contained 2% sodium dodecyl sulfate (SDS) and denatured at 95°C for 5 min. The insoluble materials were removed by centrifugation at $13,000 \times g$ for 20 min and the supernatant samples were loaded and separated by 12% SDS gel. After the blocking at room temperature for 1 h with 5% nonfat powdered milk in Tris-buffered PBS containing 0.05% Tween-20, the membrane was incubated overnight at 4°C with a 1:500 dilution of the primary antibody of mouse-anti-swine integrin $\beta 3$ monoclonal antibody (Accurate, USA) in a solution of PBS-T with 3% nonfat powdered milk. Then membranes were washed thrice in PBS-T for 10–15 min each time and incubated for 2 h at room temperature with a 1:5,000 dilution of horseradish peroxidase-conjugated secondary antibody of goat-anti-mouse antibody (Santa Cruz, USA) in TBS-T with 3% nonfat milk. After three 15 min. washes with T-PBS, the samples were visualized using the Amersham ECL Prime Reagent (GE Healthcare, USA).

Statistical analysis

Data from one-step qRT-PCR and two-step qPCR were collected in triplicate and assessed using $2^{-\Delta\Delta\text{Ct}}$ relative quantitative analysis. Statistical differences among means of two groups were calculated using student's *t*-test. Differences between more than two groups were calculated using One-Way ANOVA. Western blot result was the mostly clear one from the three repeated performances, and quantified by using NIH ImageJ software.

Results

1 CSFV proliferates best in ST cells

As compared to the traditional two-step qPCR, one-step qRT-PCR minimized RNA degradation significantly since it integrates the steps of reverse transcription and quantitative PCR into a single reaction system. The standard curve for one-step qRT-PCR was well established and the parameters were $E = 94.2\%$, $R^2 = 0.999$, slope = -3.469 and $y\text{-int} = 45.665$, respectively (Fig. 1A). CSFV had the lowest CT value in cell-culture liquid from infected ST cells among all the four cell lines at every time point (Fig. 1B), indicating that ST cells have the highest ability in secreting CSFV virions to extracellular environments among all the tested cell lines.

The copy number of CSFV virions was calculated relative to the standard curve with the following formula: copy number = $(45.665 - \text{CT value})/3.4692$. Fig. 1C shows the calculated amount of CSFV virions in cell-culture liquid from different cell lines at different time points (24 h, 48 h or 72 h) post CSFV challenge. CSFV proliferation amount in cell-culture liquid from ST cells was the highest and continually increased from 24 h to 72 h (Fig. 1C), indicating that CSFV virions secreted from ST cells were much more than that from the other three cell lines. In addition, the amount of CSFV virions secreted to cell-culture liquid had a generally increasing trend from 24 h to 72 h in all the four cell lines. As shown in Fig. 1D, the amount of CSFV proliferated in ST cells was much more than that in the other three cell lines. Specifically, the feature of CSFV proliferation was different in different cell lines from 24 h to 72 h p.i. In ST cells, CSFV reached its peak value at 48 h p.i., while it took 72 h for the other three cell lines to reach their peak values. This result suggests that EC, IEC, PK cells have a lower ability in secreting CSFV virions to extracellular matrix than ST cells do (Fig. 1C and 1D).

In summary, Fig. 1B, C, D reveal that CSFV proliferates better in ST cells than in the other tested cell lines. CSFV also has the highest amount in cell culture liquid from infected ST cells (Fig. 1B and 1C), implying that CSFV could be secreted into the extracellular environment more easily by ST cells than by the other three cell lines. This high affinity of CSFV in binding to ST cells may due to the high amount of integrin $\beta 3$ expressed on ST cell membrane.

2 CSFV has the highest proliferation amount in ST cells confirmed by IFC and ICC

To obtain visualized evidence of ST cell's predominant advantage in CSFV infection and proliferation, IFC and ICC assays were performed to assess CSFV virion amount in all four

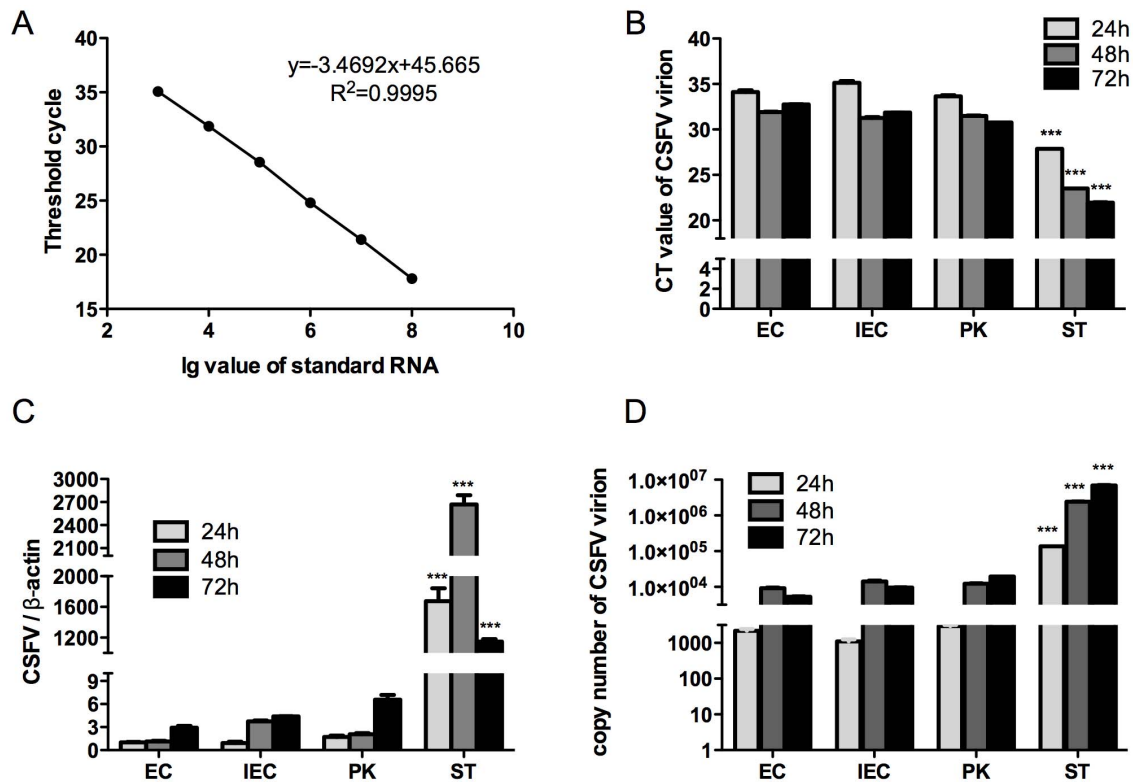


Figure 1. Establishment of standard curve for one-step qRT-PCR and evaluation of CSFV proliferation. **A)** Standard curve for one-step qRT-PCR. X-axis denotes Lg value of standard RNA and Y-axis denotes CT value (cycle for threshold, stands for the minimum cycle number of fluorescent quantitative PCR for Thermal Cycler to reach the defaulted value when collecting each tube's fluorescence signal). The smaller the CT value is, the higher amount of interested RNA the sample contains. **B)** CT value from one-step qRT-PCR, showing the amount of CSFV virions in cell-culture liquid from four cell lines at 24 h, 48 h and 72 h p.i., respectively. **C)** CSFV proliferation amount in cell-culture liquid calculated according to the standard curve. The following formula is implemented: copy number = (45.665 - CT value)/3.4692. **D)** Evaluation of CSFV proliferation rate in four cell lines using two-step qPCR with β -actin as the norm. Statistical difference was calculated between ST group and EC, IEC or PK groups at the same time point, for example, *** marked above ST-24 column denotes extremely significant difference between ST-24 and EC-24, IEC-24 or PK-24 (This explanation applies to Fig. 1B, 1C and 1D). doi:10.1371/journal.pone.0110911.g001

cell lines. As seen in Fig. 2A and 2B, CSFV had obviously higher proliferation amount in ST cells than in the other cell lines at each time point (24 h, 48 h or 72 h), consistent with the qRT-PCR results shown in Fig. 1C and Fig. 1D.

3 Integrin β 3 has the highest amount in ST cells and is up-regulated after CSFV infection

The amount of integrin β 3 mRNA in all four cell lines (EC, IEC, PK and ST) was evaluated using two-step qPCR. As indicated in Fig. 3A, the amount of integrin β 3 mRNA in ST cells was notably higher than that in the other three cell lines. Western blot analysis of integrin β 3 protein levels (Fig. 3B) also demonstrated that ST cells had the highest amount of integrin β 3 protein, in line with the result of two-step qPCR. Seen in Fig. 3B, ST cells have 5 times of the amount of expressed integrin β 3 than that observed in PK cells. Moreover, integrin β 3 mRNA was up regulated in all four cell lines after CSFV infection (Fig. 3C), revealing that integrin β 3 is up-regulated by the host cell as a response to CSFV infection. Specifically, the result of Fig. 3C showed that ST cells and IEC cells exhibited the highest amounts of integrin β 3 mRNA at 72 h p.i., while EC cells and PK cells reached peak amounts of integrin β 3 mRNA at 24 h p.i. These results reveal that, as a response to CSFV invasion, integrin β 3 is modulated to different levels in different cell lines. This may due to different cell lines having different sensitivity to CSFV infection,

leading to various responses when proliferated CSFV virions accumulate inside cells.

It is well known that integrin β 3 plays an important role in cell adhesion to the extracellular matrix (ECM). To determine whether different amounts of integrin β 3 could reflect the correlative capacity in cell adhesion *in vitro*, we performed a trypsin-digestion adhesion assay. The results in Fig. 3D showed that EC, IEC and PK cells were digested off from the ECM and turned round in shape after incubation with trypsin solution for 2 minutes at 37°C. In contrast, ST cells changed little after the same digestion period. This result reveals that ST cells possess much higher adhesion ability to ECM than do the other three cell lines. This is also in accordance with the results shown in Fig. 3A and 3B that ST cells have the highest amount of integrin β 3. These results (Fig. 3A, 3B and 3D) are consistent with the accepted role of integrin β 3 in cell adhesion.

To sum up, our results from two-step qPCR, Western blot and trypsin-digestion adhesion assays clearly confirm that ST cells have the highest amount of integrin β 3 among all the tested four cell lines. These results also demonstrate that integrin β 3 has different expression levels in different cell lines and can be up-regulated post CSFV infection.

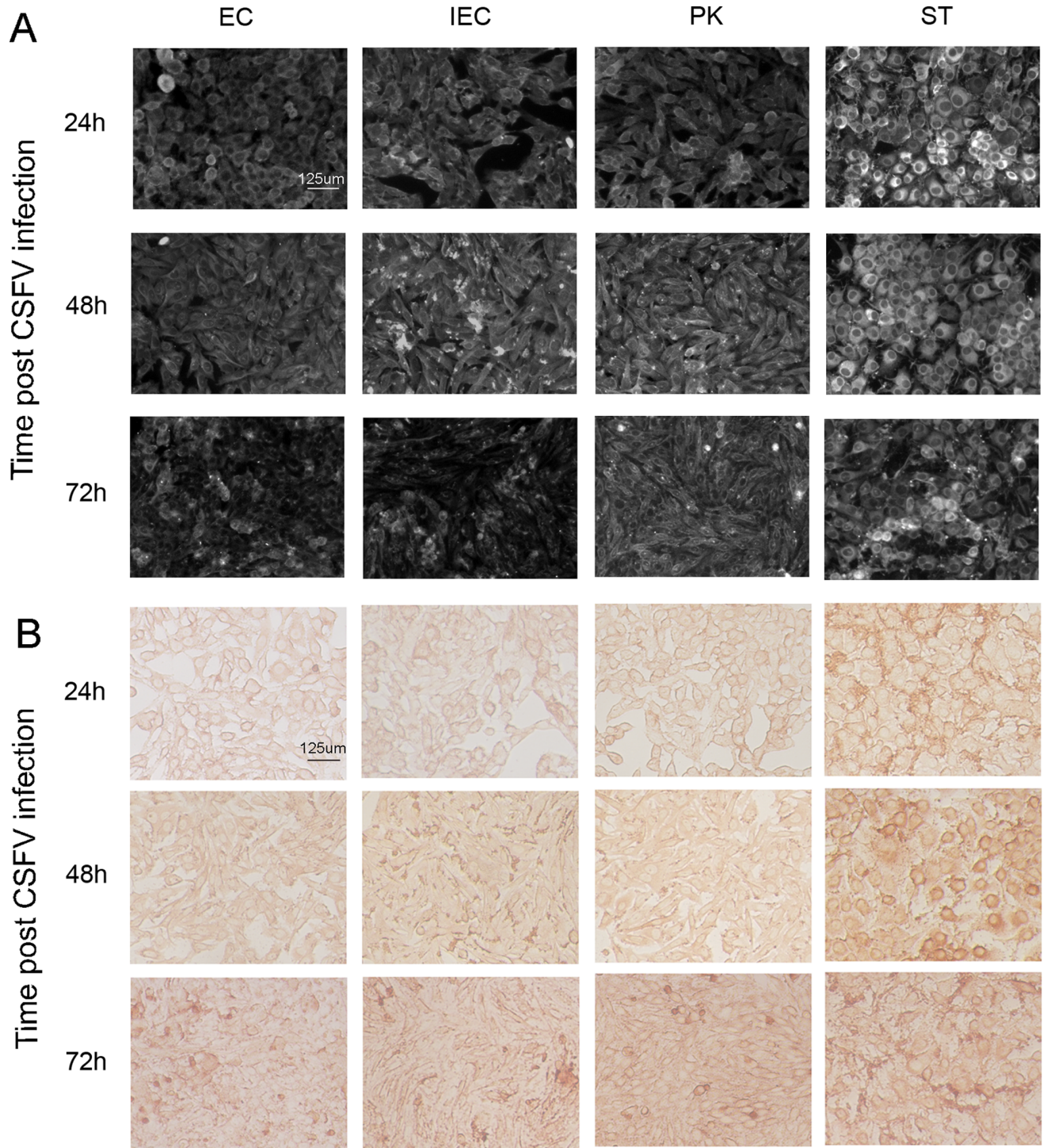


Figure 2. Immunofluorescence (IFC) and immunocytochemistry (ICC) results for evaluation of CSFV proliferation amount. A) IFC result of CSFV proliferation amount in the four cell lines p.i. The horizontal panels are different cell lines with CSFV challenge while the vertical ones represent different time points post CSFV challenge. The white spots denote CSFV virions, the brighter the spot is the more CSFV virions the cell contains. **B)** ICC result of CSFV proliferation amount in different cell lines p.i. The same with Fig. 2A, the horizontal and vertical panels denote different cell lines and different time points post CSFV challenge, respectively. The brown spots denote CSFV virions. The deeper the color is, the more amount of CSFV virions the cell contains. The exposure time for IFC and the background for ICC were kept consistent within each set of experiments. doi:10.1371/journal.pone.0110911.g002

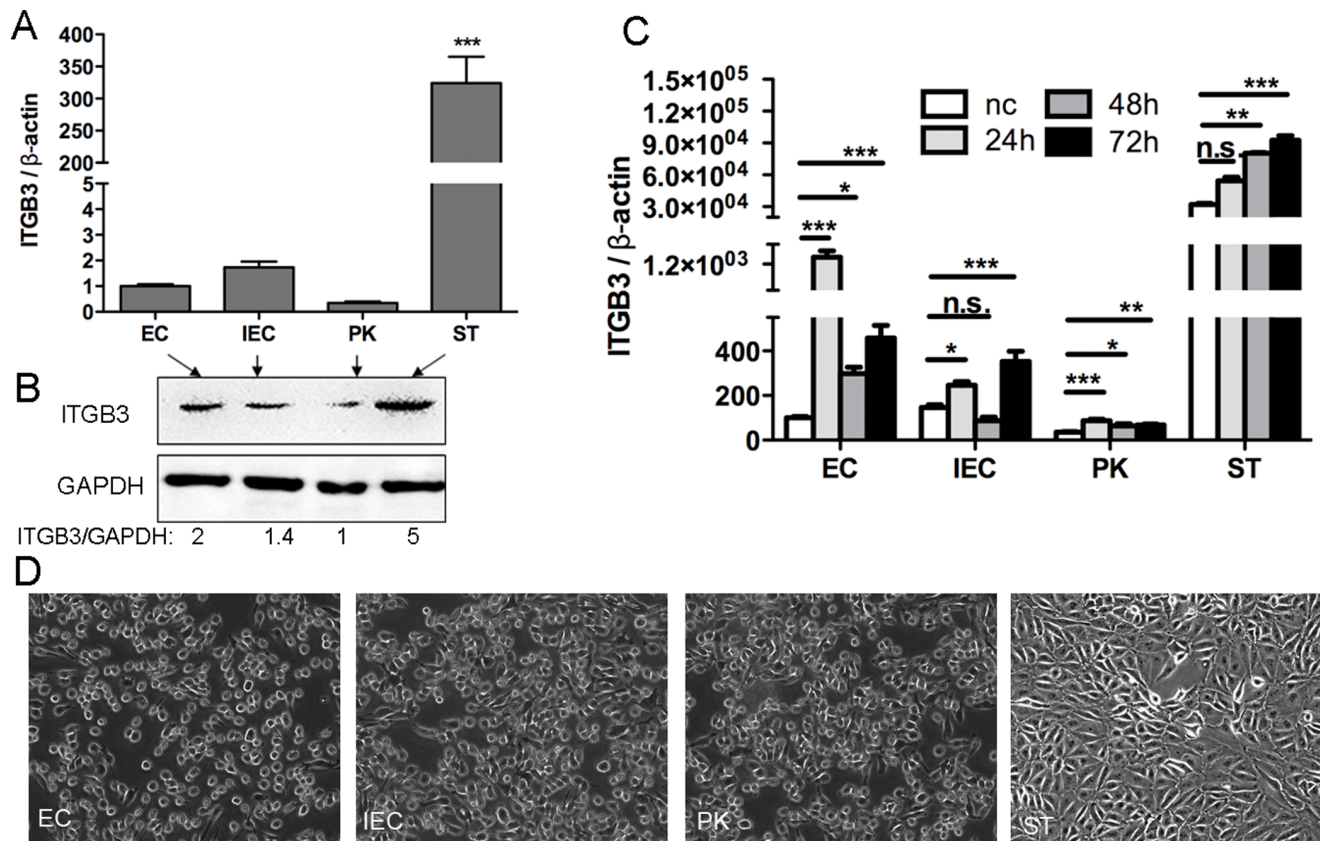


Figure 3. Assessment of integrin β amount and result of trypsin-digestion adhesion assay. **A)** Relative mRNA amount of integrin β in different cell lines before CSFV infection evaluated through two-step qPCR. ITGB3 denotes integrin β . *** marked above ST column denotes extremely significant difference between ST and EC, IEC or PK. **B)** Western blot analysis of the amount of integrin β expressed in four cell lines. GAPDH denoting the house keeping gene of Glyceraldehyde 3-phosphate dehydrogenase, were used as the loading control. Ratio of the signal intensity was calculated through NIH ImageJ. **C)** Relative mRNA amount of integrin β in different cell lines after CSFV infection, compared to nc group. "nc" denotes the cell without CSFV infection. (** $p < 0.001$, extremely significant difference; ** $p < 0.01$, very significant difference; * $p < 0.05$ significant difference, n.s., no significant difference). **D)** Results of trypsin-digestion assay for cell adhesion. Cells were pictured after the incubation with 0.25% trypsin solution at 37 °C for 2 minutes. Cells with round edge indicated that they were digesting off from the ECM. doi:10.1371/journal.pone.0110911.g003

4 CSFV proliferation rate is not related to the replication capacity of the host cell

The cell replication capacities of the four cell lines were assessed using the MTT assay in order to determine whether CSFV proliferation was affected by the growth rates of the host cells. As shown in Fig. 4, ST, IEC and PK cells replicated at similar rates, reaching peak MTT values at 48 h. By contrast, EC cells increased in number from 12 h to 72 h with peak amounts observed at 72 h. Interestingly, ST cells that have a predominant advantage in CSFV proliferation also had the lowest cell replication rate (Fig. 1 and Fig. 2). This result indicates that CSFV proliferation does not correlate with the replication capacity of the host cell.

5 CSFV proliferation rate decreases in integrin β function-blocked cell

Integrin β can be functionally blocked by mouse-anti-swine integrin β monoclonal antibody, allowing the evaluation of CSFV proliferation in cells with functionally blocked of integrin β . The results in Fig. 5 demonstrate that CSFV has a lower proliferation rate in cells that were pre-incubated with mouse-anti-swine integrin β monoclonal antibody than in cells that were pre-incubated with non-specific IgG. The amount of CSFV prolifer-

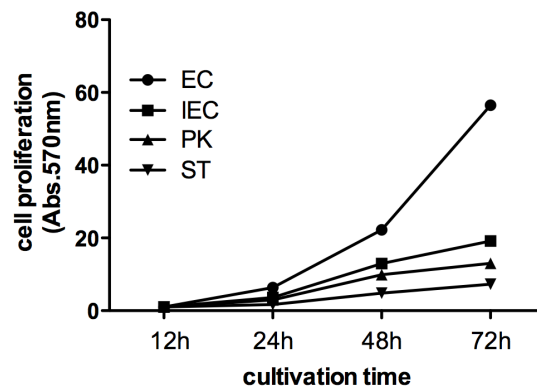


Figure 4. Cell replication assay. Cells were cultivated for 12 h, 24 h, 48 h and 72 h in 96-well plate before adding 100 μ l MTT (5 mg/ml) per well. Absorbance value for each well was collected at 570 nm using Multiskan FC Microplate Photometer. Y-axis denotes relative absorbance value at 570 nm while the absorbance value at 12 h was set as 1. doi:10.1371/journal.pone.0110911.g004

ation in cells blocked by mouse-anti-swine integrin β antibody decreased to half of that observed in non-specific IgG blocked cells with the decline most obvious at 24 h p.i. Functional blocking of

integrin $\beta 3$ reduces CSFV proliferation (Fig. 5), implying that integrin $\beta 3$ can affect CSFV infection and proliferation, presumably by affecting CSFV's binding to the host cell membrane. In summary, our results (Fig. 1–5) indicate that the amount of integrin $\beta 3$ expression is positively correlated to CSFV proliferation, demonstrating that integrin $\beta 3$ affects CSFV infection and proliferation. This presumably occurs by integrin $\beta 3$ involvement in CSFV internalizing to or secreting from the host cell.

6 Cells with shRNA1110 and shRNA1755 transiently transfected show moderate deficiency of integrin $\beta 3$

ShRNA silences target gene expression by generating short RNA pieces and forming a hairpin loop with the host cell mRNA. Here, shRNA976, shRNA1110, shRNA1755 were designed to interfere integrin $\beta 3$ mRNA on specific gene positions. As a control, the nc plasmid generates non-specific small RNAs targeting none of the swine integrin $\beta 3$ genes. In addition, GFP gene responsible for transfection-efficiency reporting and neomycin gene for G418-dependent cell-selection were added to each construct. The GFP analysis in Fig. 6A and 6B, revealed that shRNAs were successfully transfected and expressed in swine cells as observed at 24 h and 48 h post transfection. Cells transfected with different shRNAs had similar fluorescence intensity (Fig. 6C), revealing that the transfection efficiencies of different shRNA constructs were comparable. Cells had higher GFP expression level at 48 h than that at 24 h post shRNA transfection (Fig. 6C), indicating that 48 h post shRNA transfection is the optimal time to test the effect of the deficiency of integrin $\beta 3$. Integrin $\beta 3$ had deficiencies of 50% and 70% in cells transiently transfected with shRNA1110 and shRNA1755, respectively, as compared to the nc group (Fig. 6D). These results (Fig. 6A, B, C and D) indicated that all of the shRNA constructs, as well as the nc one, had comparable transfection efficiencies. Furthermore, shRNA1110 and shRNA1755 could decrease integrin $\beta 3$ mRNA to a moderate level at 48 h post shRNA transfection.

7 CSFV proliferation rate decreases in ICDC

Mono-colony cells constantly expressing shRNA1110 and shRNA1755 with a purity of more than 98% were successfully screened and cultivated on a large scale as shown in Fig. 7A and

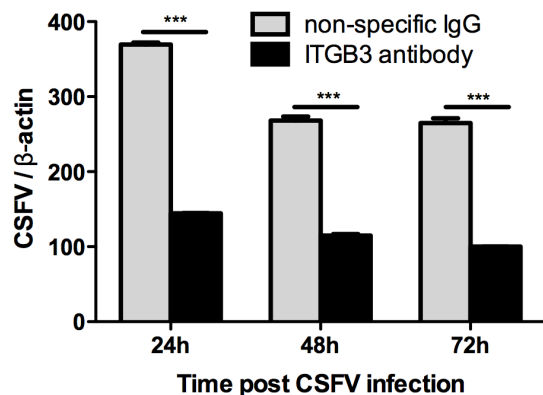


Figure 5. Evaluation of the CSFV proliferation rate in integrin $\beta 3$ functionally blocked cells. Y-axis denotes the normalized amount of proliferated CSFV assessed by two-step qPCR while X-axis denotes different time points p.i. Cells were pre-incubated with mouse anti-swine integrin $\beta 3$ monoclonal antibody at 37°C for 2 h before CSFV infection. Cells incubated with the non-specific IgG were used as the negative control. *** $p < 0.001$ represents extremely significant difference. doi:10.1371/journal.pone.0110911.g005

7B. Considering that shRNA976 had little effect in interfering integrin $\beta 3$ (Fig. 6D), we only selected the ICDC expressing shRNA1110 or shRNA1755 using G418. Correspondingly, deficiency of integrin $\beta 3$ in ICDC was evaluated using two-step qPCR. ICDC expressing shRNA1110 and shRNA1755 significantly decreased the mRNA amount of integrin $\beta 3$ with the deficiencies of 80% and 96%, respectively (Fig. 7C), as compared to the nc group (nc stands for the ICDC with nc construct constantly expressed). As shown in the Western blot results (Fig. 7D), the expression of integrin $\beta 3$ decreased to 31% and 20% of that of the negative control group. Fig. 7C and 7D reveal that the efficiency of shRNA in reduction of integrin $\beta 3$ is significant at both the mRNA and integrin protein levels.

The CSFV proliferation rate in ICDC was evaluated using two-step qPCR. ShRNA1755 constantly-expressed cells decreased CSFV proliferation significantly with deficiencies of 92.6%, 99% and 81.7% at 24 h, 48 h and 72 h p.i. (Fig. 7E), respectively, as compared to the nc group (nc stands for the ICDC without CSFV infection). This result is consistent with the integrin $\beta 3$ functional blocking assay, thereby confirming that a cellular reduction of integrin $\beta 3$ amount decreases the rate of CSFV proliferation. Collectively, these results imply that integrin $\beta 3$ affects CSFV infection and proliferation *in vitro*.

Discussion

Previous researches have demonstrated that integrin $\beta 3$ is a cell-surface binding site for many viruses [27,51–58], but little is known about the role of integrin $\beta 3$ during CSFV infection and proliferation. In this study, we document that integrin $\beta 3$, a membrane-bound signal mediator, is required for CSFV infection and proliferation. CSFV proliferates very efficiently in ST cells (Fig. 1 and 2), which was positively correlated with the high amount of integrin $\beta 3$ in these cells (Fig. 3). In addition, the amount of CSFV proliferation decreased in integrin $\beta 3$ -functionally blocked cells (Fig. 5) as well as in integrin $\beta 3$ -deficient cells (Fig. 7). Collectively, our results strongly imply that integrin $\beta 3$ plays a critical role in CSFV infection and proliferation, presumably by modulating CSFV adherence and emergence from host cells.

Our observations that integrin $\beta 3$ has a role in CSFV infection and proliferation also adds another set of virus-integrin- $\beta 3$ interactions that are relevant to the receptor-function of integrin. Many reports revealed that viruses from Flaviviridae family use integrin $\beta 3$ as a receptor or co-receptor during the infection stage [27,51–58]. For example, acute CSF shares a high level of similarity with Dengue virus (DV) [2,59] that causes classical dengue fever (DF) and dengue haemorrhagic fever/dengue shock syndrome (DHF/DSS) [53]. It has been demonstrated that integrin $\beta 3$ is required for DV type2 to enter vascular endothelial cells, and that integrin $\beta 3$ is up-regulated during DV infection [59,60]. Similarly, we found that integrin $\beta 3$ was up-regulated in all four swine cell lines (EC, IEC, PK and ST) during CSFV infection (Fig. 3C), which is in line with previous research of Tang, etc. [46]. ST cells possessing high amount of integrin $\beta 3$, also show high susceptibility to CSFV infection. Many other studies have also reported that integrin $\beta 3$ is a receptor for foot-and-mouth disease virus [54–56], coxsackievirus A9 [51], echovirus 9 [52] and rotavirus [27,30,61]. In addition, adenovirus-mediated gene delivery to intestinal epithelium relies on, or is enhanced by the presence of integrin $\alpha v \beta 3$ [62,63].

Integrin $\beta 3$ non-covalently binds with integrin αv subunit to form a heterodimeric complex. Integrin αv is also reported to play a role in virus infection, but the receptor-function of integrin αv is not as effective as integrin $\beta 3$. Song, etc. [64] demonstrated that

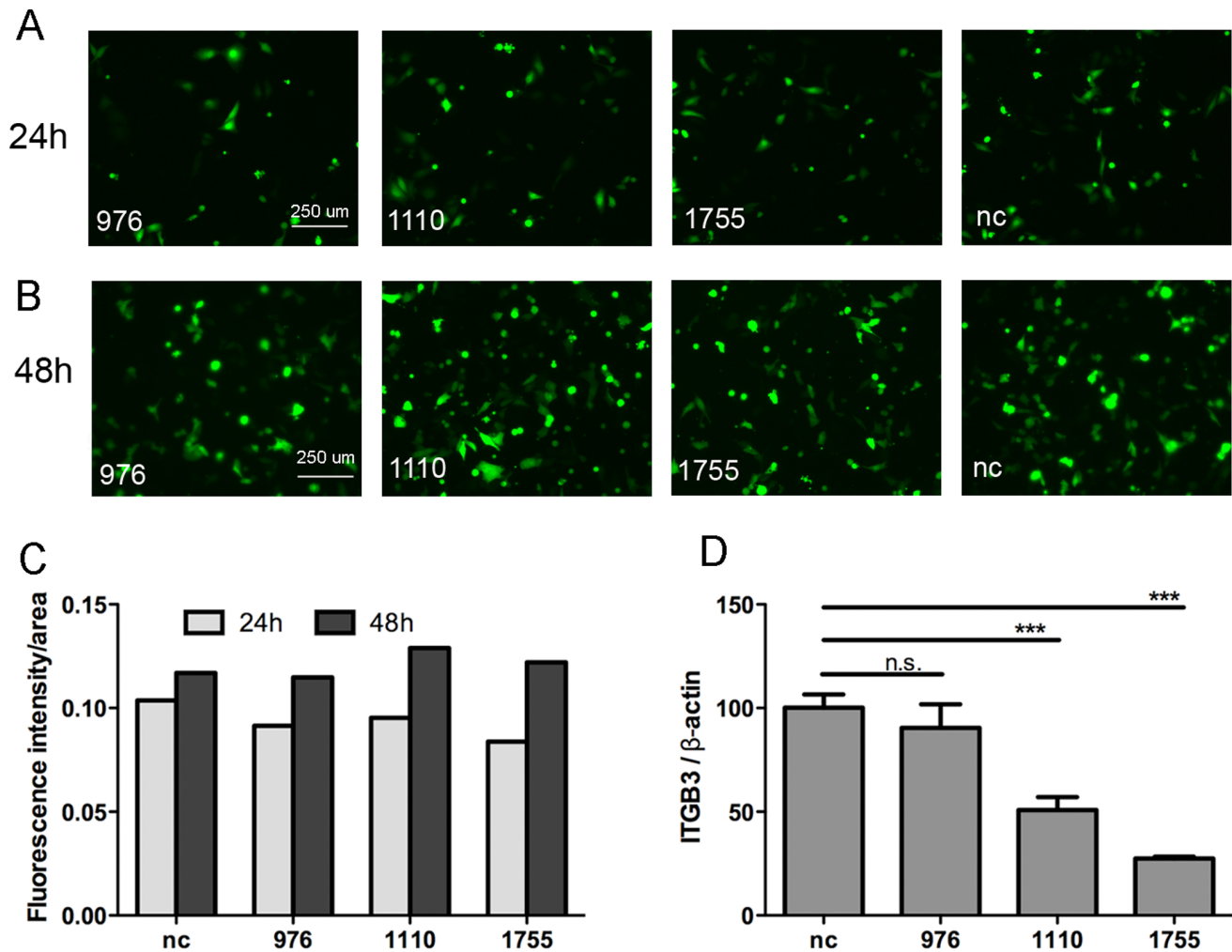


Figure 6. Evaluation of shRNA transfection-efficiency and integrin β 3 deficiency. **A)** Fluorescence pictures of cells with shRNAs transiently transfected for 24 h. 976, 1110 and 1755 denote the targeting positions on integrin β 3 mRNA sequence. nc denotes the negative-control construct which generates non-specific interfere RNA. **B)** Fluorescence pictures of cells transiently transfected with shRNA976, shRNA1110, shRNA1755 or nc for 48 h. **C)** Quantitative analysis of fluorescence intensity in Fig. 6A and 6B evaluated by ImageJ. **D)** Assessment of integrin β 3 deficiency at 48 h post shRNA transiently transfection using two-step qPCR. *** $p < 0.001$ denotes extremely significant difference. n.s. denotes no significant difference. doi:10.1371/journal.pone.0110911.g006

integrin β 3 is important for Hantavirus infection, whereas integrin α v showed less effect than integrin β 3 does *in vivo*. Neff, et al. [65] demonstrated that the bovine integrin β 3 subunit was responsible for the receptor-function of integrin in FMDV infection, while α v subunit was not equally required as β 3 subunit. Based on these prior reports, we focused on the role of integrin β 3 in CSFV infection. Even though it is yet to be established why CSFV targets integrin β 3, Bensaude, et al. have demonstrated that CSFV inhibits apoptosis of host cells, thus allowing the establishment of long-term infection and proliferation [66]. Integrin is responsible for cell adhesion, so its depletion would lead to loss of adhesion and subsequent apoptosis. The results from our study and Tang, et al. confirm that integrin β 3 is up-regulated post CSFV infection. This suggests that CSFV infection results in the up-regulation of integrin so as to keep host cells in a condition that allows additional proliferation of virions.

CSFV contains 4 structural proteins: C, Erns, E1 and E2. Erns and E2 is the glycoprotein expressed on the surface of virus envelope, inducing the immunity response of the host animal. Heparin sulfate (HS) was previously reported to be the receptor for

Erns [67,68], but it was also demonstrated that there are other strains of CSFV not dependent on HS to infect host cells. This indicates that the receptor for E2, which has not yet been disclosed, is much more specific and important for CSFV infection. Bogachek [12] demonstrated that gpE from WNV recognizes integrin α v β 3 during the entry stage into the host cells. In this study, we demonstrated that integrin β 3 is indeed required for CSFV infection and proliferation. This indicates that integrin β 3 could be a promising receptor for glycoprotein E2 of CSFV. Further researches will be needed to explore more mechanisms of CSFV infection and proliferation.

Conclusion

Our work shows that integrin β 3 is positively correlated to CSFV proliferation, that integrin β 3 is up-regulated post CSFV challenge and that depletion of integrin β 3 decreases CSFV infection and proliferation. Therefore, integrin β 3 is revealed to be required for CSFV infection and proliferation. Thus integrin β 3

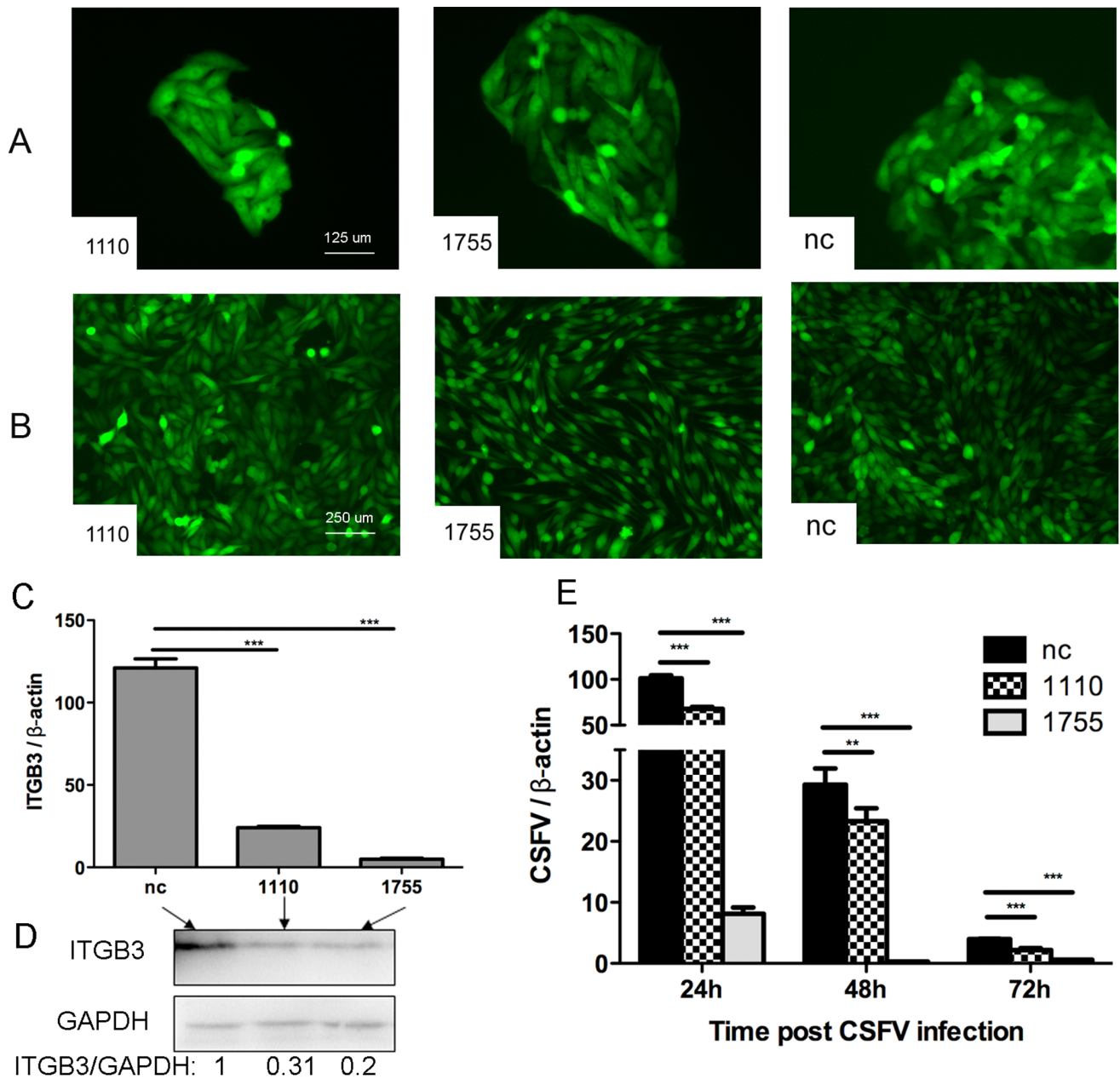


Figure 7. Evaluation of integrin $\beta 3$ deficiency and CSFV proliferation in integrin $\beta 3$ constantly defected cells (ICDC). **A)** Fluorescence pictures of ICDC colonies. 1110, 1755 and nc respectively denote the ICDC with shRNA1110, shRNA1755 or nc construct constantly expressed. **B)** Fluorescence pictures of mass cultures of ICDC used for CSFV infection. **C)** Assessment of integrin $\beta 3$ deficiency in ICDC by two-step qPCR using β -actin as the norm. **D)** Western blot results showing the integrin $\beta 3$ deficiency in protein level. Ratio of the signal intensity was calculated through NIH ImageJ. **E)** Evaluation of CSFV proliferation rate in ICDC at 24 h, 48 h or 72 h p.i., respectively. "nc" denotes CSFV proliferation rate in ICDC constantly expressing nc construct. (***) $p < 0.001$ denotes extremely significant difference, (**) $p < 0.01$ denotes very significant difference). doi:10.1371/journal.pone.0110911.g007

could be a viable target for antiviral therapies to control CSFV infection.

Acknowledgments

We thank members of the Zhang lab for reagents/materials/analysis tools, especially Z. Lin, H. L. Li, C. c. Zhang. We thank Carl Bauer and Guanghui Yi from Indiana University Bloomington for advices and modifications on this manuscript.

Author Contributions

Conceived and designed the experiments: YZ. Performed the experiments: W. Li W. Liang GW. Analyzed the data: W. Li KK KG. Contributed reagents/materials/analysis tools: W. Liang. Contributed to the writing of the manuscript: W. Li GW.

References

- Tu C, Lu Z, Li H, Yu X, Liu X, et al. (2001) Phylogenetic comparison of classical swine fever virus in China. *Virus Res* 81: 29–37.
- Zhu Y, Shi Z, Drew TW, Wang Q, Qiu H, et al. (2009) Antigenic differentiation of classical swine fever viruses in China by monoclonal antibodies. *Virus Res* 142: 169–174.
- Stegeman JA, Elbers AR, Boum A, de Jong MC (2002) Rate of inter-herd transmission of classical swine fever virus by different types of contact during the 1997–8 epidemic in The Netherlands. *Epidemiol Infect* 128: 285–291.
- Choi C, Chae C (2003) Detection of classical swine fever virus in boar semen by reverse transcription-polymerase chain reaction. *J Vet Diagn Invest* 15: 35–41.
- Croyle MA, Anderson DJ, Roessler BJ, Amidon GL (1998) Development of a highly efficient purification process for recombinant adenoviral vectors for oral gene delivery. *Pharm Dev Technol* 3: 365–372.
- Blacksell SD, Khounsy S, Van Aken D, Gleeson IJ, Westbury HA (2006) Comparative susceptibility of indigenous and improved pig breeds to Classical swine fever virus infection: practical and epidemiological implications in a subsistence-based, developing country setting. *Trop Anim Health Prod* 38: 467–474.
- Greiser-Wilke I, Fritzscheier J, Koenen F, Vanderhallen H, Ruttil D, et al. (2000) Molecular epidemiology of a large classical swine fever epidemic in the European Union in 1997–1998. *Vet Microbiol* 77: 17–27.
- Stegeman A, Elbers A, de Smit H, Moser H, Smak J, et al. (2000) The 1997–1998 epidemic of classical swine fever in the Netherlands. *Vet Microbiol* 73: 183–196.
- Dreier S, Zimmermann B, Moennig V, Greiser-Wilke I (2007) A sequence database allowing automated genotyping of Classical swine fever virus isolates. *J Virol Methods* 140: 95–99.
- Husser L, Alves MP, Ruggli N, Summerfield A (2011) Identification of the role of RIG-I, MDA-5 and TLR3 in sensing RNA viruses in porcine epithelial cells using lentivirus-driven RNA interference. *Virus Res* 159: 9–16.
- Wang T, Anderson JF, Magnarelli LA, Wong SJ, Koski RA, et al. (2001) Immunization of mice against West Nile virus with recombinant envelope protein. *J Immunol* 167: 5273–5277.
- Bogachev MV, Zaitsev BN, Sekatskii SK, Protopopova EV, Ternovoi VA, et al. (2010) Characterization of glycoprotein E C-end of West Nile virus and evaluation of its interaction force with alphaVbeta3 integrin as putative cellular receptor. *Biochemistry (Mosc)* 75: 472–480.
- Neff S, Baxt B (2001) The ability of integrin alpha(v)beta(3) To function as a receptor for foot-and-mouth disease virus is not dependent on the presence of complete subunit cytoplasmic domains. *J Virol* 75: 527–532.
- Hynes RO (1992) Integrins: versatility, modulation, and signaling in cell adhesion. *Cell* 69: 11–25.
- Fernandez C, Clark K, Burrows L, Schofield NR, Humphries MJ (1998) Regulation of the extracellular ligand binding activity of integrins. *Front Biosci* 3: d684–700.
- Hynes RO (2002) Integrins: bidirectional, allosteric signaling machines. *Cell* 110: 673–687.
- Cayrol C, Bertrand C, Kowalski-Chauvel A, Daulhac L, Cohen-Jonathan-Moyal E, et al. (2011) alphav integrin: a new gastrin target in human pancreatic cancer cells. *World J Gastroenterol* 17: 4488–4495.
- Lanthier J, Desrosiers RR (2006) Regulation of protein L-isoaspartyl methyltransferase by cell-matrix interactions: involvement of integrin alphavbeta3, PI 3-kinase, and the proteasome. *Biochem Cell Biol* 84: 684–694.
- Ji P, Haimovich B (1999) Integrin alpha IIb beta 3-mediated pp125FAK phosphorylation and platelet spreading on fibrinogen are regulated by PI 3-kinase. *Biochim Biophys Acta* 1448: 543–552.
- Naik MU, Naik UP (2011) Contra-regulation of calcium- and integrin-binding protein 1-induced cell migration on fibronectin by PAK1 and MAP kinase signaling. *J Cell Biochem* 112: 3289–3299.
- Sun DS, Lo SJ, Tsai WJ, Lin CH, Yu MS, et al. (2005) PI3-kinase is essential for ADP-stimulated integrin alpha(IIb)beta3-mediated platelet calcium oscillation, implications for P2Y receptor pathways in integrin alpha(IIb)beta3-initiated signaling cross-talks. *J Biomed Sci* 12: 937–948.
- Sun DS, Lo SJ, Lin CH, Yu MS, Huang CY, et al. (2005) Calcium oscillation and phosphatidylinositol 3-kinase positively regulate integrin alpha(IIb)beta3-mediated outside-in signaling. *J Biomed Sci* 12: 321–333.
- Bernard-Trifilo JA, Lim ST, Hou S, Schlaepfer DD, Ilic D (2006) Analyzing FAK and Pyk2 in early integrin signaling events. *Curr Protoc Cell Biol Chapter* 14: Unit 14 17.
- Butler B, Blystone SD (2005) Tyrosine phosphorylation of beta3 integrin provides a binding site for Pyk2. *J Biol Chem* 280: 14556–14562.
- Sanjay A, Houghton A, Neff L, DiDomenico E, Bardelay C, et al. (2001) Cbl associates with Pyk2 and Src to regulate Src kinase activity, alpha(v)beta(3) integrin-mediated signaling, cell adhesion, and osteoclast motility. *J Cell Biol* 152: 181–195.
- Pfaff M, Jurdic P (2001) Podosomes in osteoclast-like cells: structural analysis and cooperative roles of paxillin, proline-rich tyrosine kinase 2 (Pyk2) and integrin alphaVbeta3. *J Cell Sci* 114: 2775–2786.
- Guerrero CA, Mendez E, Zarate S, Isa P, Lopez S, et al. (2000) Integrin alpha(v)beta(3) mediates rotavirus cell entry. *Proc Natl Acad Sci U S A* 97: 14644–14649.
- Berinstein A, Roivainen M, Hovi T, Mason PW, Baxt B (1995) Antibodies to the vitronectin receptor (integrin alpha V beta 3) inhibit binding and infection of foot-and-mouth disease virus to cultured cells. *J Virol* 69: 2664–2666.
- Zarate S, Espinosa R, Romero P, Guerrero CA, Arias CF, et al. (2000) Integrin alpha2beta1 mediates the cell attachment of the rotavirus neuraminidase-resistant variant nar3. *Virology* 278: 50–54.
- Zarate S, Romero P, Espinosa R, Arias CF, Lopez S (2004) VP7 mediates the interaction of rotaviruses with integrin alphavbeta3 through a novel integrin-binding site. *J Virol* 78: 10839–10847.
- Wang W, Zhang Y, Li Y, Pan L, Bai L, et al. (2012) Dysregulation of the beta3 integrin-VEGFR2 complex in Hantaan virus-directed hyperpermeability upon treatment with VEGF. *Arch Virol* 157: 1051–1061.
- Medina RA, Mirowsky-Garcia K, Hutt J, Hjelle B (2007) Ribavirin, human convalescent plasma and anti-beta3 integrin antibody inhibit infection by Sin Nombre virus in the deer mouse model. *J Gen Virol* 88: 493–505.
- Larson RS, Brown DC, Ye C, Hjelle B (2005) Peptide antagonists that inhibit Sin Nombre virus and hantaan virus entry through the beta3-integrin receptor. *J Virol* 79: 7319–7326.
- Neff S, Sa-Carvalho D, Rieder E, Mason PW, Blystone SD, et al. (1998) Foot-and-mouth disease virus virulent for cattle utilizes the integrin alpha(v)beta3 as its receptor. *J Virol* 72: 3587–3594.
- Jackson T, Sharma A, Ghazaleh RA, Blakemore WE, Ellard FM, et al. (1997) Arginine-glycine-aspartic acid-specific binding by foot-and-mouth disease viruses to the purified integrin alpha(v)beta3 in vitro. *J Virol* 71: 8357–8361.
- Majhen D, Stojanovic N, Speljko T, Brozovic A, De Zan T, et al. (2011) Increased expression of the coxsackie and adenovirus receptor downregulates alphavbeta3 and alphavbeta5 integrin expression and reduces cell adhesion and migration. *Life Sci* 89: 241–249.
- Raman S, Hsu TH, Ashley SL, Spindler KR (2009) Usage of integrin and heparan sulfate as receptors for mouse adenovirus type 1. *J Virol* 83: 2831–2838.
- Lafrenic RM, Lee SF, Hewlett IK, Yamada KM, Dhawan S (2002) Involvement of integrin alphavbeta3 in the pathogenesis of human immunodeficiency virus type 1 infection in monocytes. *Virology* 297: 31–38.
- Chiodelli P, Urbinati C, Mitola S, Tanghetti E, Rusnati M (2012) Sialic acid associated with alphavbeta3 integrin mediates HIV-1 Tat protein interaction and endothelial cell proangiogenic activation. *J Biol Chem* 287: 20456–20466.
- Joki-Korpela P, Marjomaki V, Krogerus C, Heino J, Hyypia T (2001) Entry of human parechovirus 1. *J Virol* 75: 1958–1967.
- Triantafilou K, Triantafilou M (2001) A biochemical approach reveals cell-surface molecules utilised by Picornaviridae: Human Parechovirus 1 and Echovirus 1. *J Cell Biochem* 80: 373–381.
- Triantafilou K, Triantafilou M, Takada Y, Fernandez N (2000) Human parechovirus 1 utilizes integrins alphavbeta3 and alphavbeta1 as receptors. *J Virol* 74: 5856–5862.
- Gianni T, Leoni V, Chesnokova LS, Hutt-Fletcher LM, Campadelli-Fiume G (2012) alphavbeta3-integrin is a major sensor and activator of innate immunity to herpes simplex virus-1. *Proc Natl Acad Sci U S A* 109: 19792–19797.
- Campadelli-Fiume G, Menotti L, Avitabile E, Gianni T (2012) Viral and cellular contributions to herpes simplex virus entry into the cell. *Curr Opin Virol* 2: 28–36.
- Gianni T, Campadelli-Fiume G (2012) alphaVbeta3-integrin relocates nectin 1 and routes herpes simplex virus to lipid rafts. *J Virol* 86: 2850–2855.
- Tang QH, Zhang YM, Xu YZ, He L, Dai C, et al. (2010) Up-regulation of integrin beta3 expression in porcine vascular endothelial cells cultured in vitro by classical swine fever virus. *Vet Immunol Immunopathol* 133: 237–242.
- He L, Zhang YM, Lin Z, Li WW, Wang J, et al. (2012) Classical swine fever virus NS5A protein localizes to endoplasmic reticulum and induces oxidative stress in vascular endothelial cells. *Virus Genes* 45: 274–282.
- Wang J, Hu G, Gao W, Xu L, Ning P, et al. (2014) Immortalized porcine intestinal epithelial cell cultures susceptible to porcine rotavirus infection. *J Virol Methods* 202: 87–94.
- Xu H, Hong HX, Zhang YM, Guo KK, Deng XM, et al. (2007) Cytopathic effect of classical swine fever virus NS3 protein on PK-15 cells. *Intervirology* 50: 433–438.
- Zhang X, Shi HY, Chen JF, Shi D, Lang HW, et al. (2013) Identification of cellular proteome using two-dimensional difference gel electrophoresis in ST cells infected with transmissible gastroenteritis coronavirus. *Proteome Sci* 11: 31.
- Roivainen M, Piirainen L, Hovi T, Virtanen I, Rikonen T, et al. (1994) Entry of coxsackievirus A9 into host cells: specific interactions with alpha v beta 3 integrin, the vitronectin receptor. *Virology* 203: 357–365.
- Nelsen-Salz B, Eggers HJ, Zimmermann H (1999) Integrin alpha(v)beta3 (vitronectin receptor) is a candidate receptor for the virulent echovirus 9 strain Paraty. *J Gen Virol* 80 (Pt 9): 2311–2313.
- Lei HY, Yeh TM, Liu HS, Lin YS, Chen SH, et al. (2001) Immunopathogenesis of dengue virus infection. *J Biomed Sci* 8: 377–388.
- O'Donnell V, LaRocco M, Duque H, Baxt B (2005) Analysis of foot-and-mouth disease virus internalization events in cultured cells. *J Virol* 79: 8506–8518.
- Duque H, Baxt B (2003) Foot-and-mouth disease virus receptors: comparison of bovine alpha(V) integrin utilization by type A and O viruses. *J Virol* 77: 2500–2511.

56. Ruiz-Saenz J, Goetz Y, Tabares W, Lopez-Herrera A (2009) Cellular receptors for foot and mouth disease virus. *Intervirology* 52: 201–212.
57. Larson RS, Davis T, Bologna C, Semenuk G, Vijayan S, et al. (2005) Dissociation of I domain and global conformational changes in LFA-1: refinement of small molecule-I domain structure-activity relationships. *Biochemistry* 44: 4322–4331.
58. Gavrilovskaya IN, Brown EJ, Ginsberg MH, Mackow ER (1999) Cellular entry of hantaviruses which cause hemorrhagic fever with renal syndrome is mediated by beta3 integrins. *J Virol* 73: 3951–3959.
59. Zhang JL, Wang JL, Gao N, Chen ZT, Tian YP, et al. (2007) Up-regulated expression of beta3 integrin induced by dengue virus serotype 2 infection associated with virus entry into human dermal microvascular endothelial cells. *Biochem Biophys Res Commun* 356: 763–768.
60. Zhang ZS, Yan YS, Weng YW, Huang HL, Li SQ, et al. (2007) High-level expression of recombinant dengue virus type 2 envelope domain III protein and induction of neutralizing antibodies in BALB/C mice. *J Virol Methods* 143: 125–131.
61. Guerrero CA, Moreno LP (2012) Rotavirus receptor proteins Hsc70 and integrin alphavbeta3 are located in the lipid microdomains of animal intestinal cells. *Acta Virol* 56: 63–70.
62. Croyle MA, Stone M, Amidon GL, Roessler BJ (1998) In vitro and in vivo assessment of adenovirus 41 as a vector for gene delivery to the intestine. *Gene Ther* 5: 645–654.
63. Hamilton TE, McClane SJ, Baldwin S, Burke C, Patel H, et al. (1997) Efficient adenoviral-mediated murine neonatal small intestinal gene transfer is dependent on alpha(v) integrin expression. *J Pediatr Surg* 32: 1695–1703.
64. Song JW, Song KJ, Baek LJ, Frost B, Poncz M, et al. (2005) In vivo characterization of the integrin beta3 as a receptor for Hantaan virus cellular entry. *Exp Mol Med* 37: 121–127.
65. Neff S (2000) In vivo animal models of cerebral vasospasm: a review. *Neurosurgery* 47: 794–795.
66. Bensaude E, Turner JL, Wakeley PR, Sweetman DA, Pardieu C, et al. (2004) Classical swine fever virus induces proinflammatory cytokines and tissue factor expression and inhibits apoptosis and interferon synthesis during the establishment of long-term infection of porcine vascular endothelial cells. *J Gen Virol* 85: 1029–1037.
67. Hulst MM, van Gennip HG, Vlot AC, Schooten E, de Smit AJ, et al. (2001) Interaction of classical swine fever virus with membrane-associated heparan sulfate: role for virus replication in vivo and virulence. *J Virol* 75: 9585–9595.
68. Hulst MM, van Gennip HG, Moormann RJ (2000) Passage of classical swine fever virus in cultured swine kidney cells selects virus variants that bind to heparan sulfate due to a single amino acid change in envelope protein E(rns). *J Virol* 74: 9553–9561.