

SHORT REPORT

Open Access



Complete mitochondrial genome of the giant liver fluke *Fascioloides magna* (Digenea: Fasciolidae) and its comparison with selected trematodes

Jun Ma^{1,2}, Jun-Jun He¹, Guo-Hua Liu¹, Roman Leontovyc³, Martin Kašný^{3,4*} and Xing-Quan Zhu^{1,2*}

Abstract

Background: Representatives of the trematode family Fasciolidae are responsible for major socio-economic losses worldwide. *Fascioloides magna* is an important pathogenic liver fluke of wild and domestic ungulates. To date, only a limited number of studies concerning the molecular biology of *F. magna* exist. Therefore, the objective of the present study was to determine the complete mitochondrial (mt) genome sequence of *F. magna*, and assess the phylogenetic relationships of this fluke with other trematodes based on the mtDNA dataset.

Findings: The complete *F. magna* mt genome sequence is 14,047 bp. The gene content and arrangement of the *F. magna* mt genome is similar to those of *Fasciola* spp., except that *trnE* is located between *trnG* and the only non-coding region in *F. magna* mt genome. Phylogenetic relationships of *F. magna* with selected trematodes using Bayesian inference (BI) was reconstructed based on the concatenated amino acid sequences for 12 protein-coding genes, which confirmed that the genus *Fascioloides* is closely related to the genus *Fasciola*; the intergeneric differences of amino acid composition between the genera *Fascioloides* and *Fasciola* ranged 17.97–18.24 %.

Conclusions: The determination of *F. magna* mt genome sequence provides a valuable resource for further investigations of the phylogeny of the family Fasciolidae and other trematodes, and represents a useful platform for designing appropriate molecular markers.

Keywords: *Fascioloides magna*, *Fasciola*, Mitochondrial genome, Phylogenetic analysis

Background

Fascioloides magna (Bassi, 1875), the type- and only species of the genus *Fascioloides* Ward, 1917, was first described as *Distomum magnum* in 1875 [1]. Later in 1917, Ward erected the genus *Fascioloides* for *Fasciola magna* (Bassi, 1875) [2]. *Fascioloides magna*, known as the large American liver fluke, giant liver fluke or deer fluke, is an important digenetic trematode of the family Fasciolidae [3, 4]. This species, which is of North

America origin [5, 6] and invasive in European countries [7], has high potential to colonize new geographic territories (a variety of wild and domestic ungulates [3, 8–10]), and can establish expanding populations from a natural epidemic focus through translocated hosts [5, 6, 11]. Migration of *F. magna* immature flukes within the host body often leads to profound damage to the liver and other organ tissues [8, 12], causing economic losses worldwide [13].

The consequences of infection of various intermediate and definitive hosts by *F. magna* has been intensively studied [8, 12], but the relevant molecular research of this fluke has not received enough attention [4, 9]. To date, a sequence of nuclear ribosomal DNA (rDNA) of *F. magna* was obtained in 2008 [14], partial sequences of mitochondrial (mt) genes, such as cytochrome *c* oxidase

* Correspondence: kasa@post.cz; xingquanzhu1@hotmail.com

³Department of Parasitology, Faculty of Science, Charles University, Viničná 7, Prague 2 128 44, Czech Republic

¹State Key Laboratory of Veterinary Etiological Biology, Key Laboratory of Veterinary Parasitology of Gansu Province, Lanzhou Veterinary Research Institute, Chinese Academy of Agricultural Sciences, Lanzhou, Gansu Province 730046, PR China

Full list of author information is available at the end of the article

subunit I (*cox1*) and nicotinamide dehydrogenase subunit I (*nad1*) were characterized [3]. According to these data, *F. magna* was divided into two mt haplotype groups [5, 14, 15], the first haplotype representing isolates from western North America and Italy, and the second haplotype representing isolates from eastern North America and some European countries such as Czech Republic, Poland and Croatia [3, 5]. Recently, the *F. magna* transcriptome was reported, which provides a useful platform for further fundamental studies of this fluke [16], but complete mt genome of *F. magna* is still unavailable.

Molecular tools, using genetic markers in mitochondrial DNA (mtDNA) sequences, have been proven reliable in identification and differentiation of trematode species [17–20]. In the present study we determined the mitochondrial genome sequence of *F. magna* (Czech isolate) using PCR-coupled sequencing technique combined with bioinformatic analysis, and for the first time assessed its phylogenetic relationship with selected trematodes based on the nucleotide- and inferred amino acid sequences of the protein-coding genes.

Methods

Sampling and DNA extraction

Three adult *F. magna* worms were isolated from livers of naturally infected red deer (*Cervus elaphus*), hunted at Kokořinsko area, Czech Republic. Worms were washed in 0.1 M phosphate-buffered saline (PBS), pH 7.2, fixed in 70 % (v/v) ethanol and preserved at -20 °C, until further use. Total genomic DNA was extracted from individual *F. magna* specimens using sodium dodecyl sulfate (SDS)/proteinase K treatment [21] and column-purification (Wizard® SV Genomic DNA Purification System, Promega, Madison, USA), according to the manufacturer's protocol.

Acquisition of ITS rDNA and sample identification

The internal transcribed spacer (ITS) rDNA region of each of the three *F. magna* specimens, spanning partial 18S rDNA, the complete ITS-1, 5.8S rDNA, ITS-2, and partial 28S rDNA, was amplified using primers BD1 (forward; 5'-GTC GTA ACA AGG TTT CCG TA-3' and BD2 (reverse; 5'-ATG CTT AAA TTC AGC GGG T-3') [22] and sequenced using the same primers. These *F. magna* samples had ITS-1 and ITS-2 sequences identical to the corresponding sequences available on GenBank (EF051080).

Long-range PCR-based sequencing of mt genome

The primers were designed based on relatively conserved regions of mtDNA sequences from *Fasciola hepatica* and *Fasciola gigantica*. The entire mt genome from a single specimen of *F. magna* was amplified in 5

overlapping fragments, using the primers shown in Additional file 1: Table S1.

PCR reactions were conducted in a total volume of 50 µl, using 25 µl PrimeStar Max DNA polymerase premix (Takara, Dalian, China), 25 pmol of each primer (synthesized in Genewiz, Suzhou, China), 0.5 µl DNA templates, and H₂O, in a thermocycler (Biometra, Göttingen, Germany). PCR cycling conditions started with an initial denaturation at 98 °C for 2 min, followed by 22 cycles of denaturation at 92 °C for 18 s, annealing at 52–65 °C for 12 s and extension at 60 °C for 1–5 min, followed by 92 °C denaturation for 2 min, plus 25 cycles of 92 °C for 18 s (denaturation), 50–67 °C for 12 s (annealing) and 66 °C for 3–6 min, with a final extension step for 10 min at 66 °C. A negative control (no DNA) was included in each amplification run. Amplicons (2.5 µl) were electrophoresed in a 2 % agarose gel, stained with Gold View I (Solarbio, Beijing, China) and photographed by GelDoc - It TS™ Imaging System (UVP, USA).

Assembly, annotation and bioinformatics analysis

Sequences were assembled manually and aligned against the entire mt genome sequences of *Fa. hepatica* (GenBank accession No. NC_002546) and *Fa. gigantica* (NC_024025) using MAFFT 7.122 to infer boundaries for each gene. Amino acid sequences of 12 protein-coding genes were translated using MEGA v.6.06 and NCBI translation Table 21 (Trematode Mitochondrial Code). The tRNA genes were affirmed using the programs tRNAscan-SE [23] and ARWEN (<http://130.235.46.10/ARWEN/>) or by comparison with those from the *Fa. hepatica* and *Fa. gigantica* mt genomes. The two rRNA genes were identified by comparison with those of *Fa. hepatica* and *Fa. gigantica*.

A comparative analysis of the nucleotide sequences of each protein-coding gene, the amino acid sequences, two ribosomal RNA genes, 22 tRNA genes as well as non-coding regions (NCRs) among *F. magna*, *Fa. hepatica* and *Fa. gigantica* was conducted.

Phylogenetic analysis

The concatenated amino acid sequences of *F. magna* mt genome, conceptually translated from individual genes of each mt genome, were aligned with those of published mt genomes from selected trematodes, including *Opisthorchis felineus* (GenBank accession No. EU_921260) and *Clonorchis sinensis* (FJ_381664) (Opisthorchiidae); *Metagonimus yokogawai* (KC_330755) and *Haplorchis taichui* (KF_214770) (Heterophyidae); *Paragonimus westermani* Japanese isolate (AF219379) and *Paragonimus westermani* Indian isolate (NC_027673) (Paragonimidae); *Fa. hepatica*, *Fasciola* sp. (KF_543343) and *Fa. gigantica* (Fasciolidae); *Hypoderaeum* sp. (KM111525) (Echinostomatidae); *Paramphistomum*

Table 1 The features of the mitochondrial genomes of *Fascioloides magna*

| Gene | Coding position (5'-3') | Length (bp) | Start/Stop codons | No. of amino acids | Intergenic nucleotides |
|--------------|-------------------------|-------------|-------------------|--------------------|------------------------|
| <i>cox3</i> | 1-645 | 645 | ATG/TAA | 215 | 4 |
| <i>trnH</i> | 650-713 | 64 | | | 1 |
| <i>cytb</i> | 715-1827 | 1113 | ATG/TAG | 371 | 7 |
| <i>nad4L</i> | 1835-2107 | 273 | GTG/TAG | 91 | -40 |
| <i>nad4</i> | 2068-3348 | 1281 | GTG/TAG | 427 | 1 |
| <i>trnQ</i> | 3350-3412 | 63 | | | 11 |
| <i>trnF</i> | 3424-3486 | 63 | | | 14 |
| <i>trnM</i> | 3501-3566 | 66 | | | 0 |
| <i>atp6</i> | 3567-4085 | 516 | ATG/TAA | 172 | 4 |
| <i>nad2</i> | 4090-4959 | 870 | ATG/TAG | 290 | 2 |
| <i>trnV</i> | 4962-5023 | 62 | | | 7 |
| <i>trnA</i> | 5031-5092 | 62 | | | 6 |
| <i>trnD</i> | 5099-5160 | 62 | | | 1 |
| <i>nad1</i> | 5162-6064 | 903 | GTG/TAG | 301 | 7 |
| <i>trnN</i> | 6072-6137 | 66 | | | 4 |
| <i>trnP</i> | 6142-6210 | 69 | | | 0 |
| <i>trnI</i> | 6211-6273 | 63 | | | 5 |
| <i>trnK</i> | 6279-6343 | 65 | | | 0 |
| <i>nad3</i> | 6344-6700 | 357 | ATG/TAA | 119 | 4 |
| <i>trnS1</i> | 6705-6763 | 59 | | | 8 |
| <i>trnW</i> | 6772-6836 | 65 | | | 3 |
| <i>cox1</i> | 6840-8384 | 1545 | GTG/TAG | 515 | 23 |
| <i>trn T</i> | 8408-8469 | 62 | | | 0 |
| <i>rrnL</i> | 8470-9453 | 984 | | | 2 |
| <i>trnC</i> | 9456-9518 | 63 | | | -2 |
| <i>rrnS</i> | 9517-10281 | 765 | | | 2 |
| <i>cox2</i> | 10284-10886 | 603 | ATG/TAG | 201 | 32 |
| <i>nad6</i> | 10919-11371 | 453 | GTG/TAG | 151 | 0 |
| <i>trnY</i> | 11372-11428 | 57 | | | 12 |
| <i>trnL1</i> | 11441-11504 | 64 | | | 2 |
| <i>trnS2</i> | 11506-11566 | 60 | | | 10 |
| <i>trnL2</i> | 11577-11642 | 66 | | | -3 |
| <i>trnR</i> | 11640-11705 | 66 | | | -2 |
| <i>nad5</i> | 11704-13272 | 1569 | GTG/TAG | 523 | 10 |
| <i>trnG</i> | 13283-13348 | 66 | | | 6 |
| <i>trnE</i> | 13355-13422 | 68 | | | 0 |
| NCR | 13423-14047 | 520 | | | 0 |

Abbreviation: NCR Non-coding region

(9,456-9,518) (Table 1). The length of the *rrnL* and *rrnS* RNA genes is 984 bp and 765 bp, respectively. The only NCR of *F. magna* mt genome is of 520 bp in length, and is located between *trnE* and *cox3*. It contains two complete direct repeats: six copies of a 23 nt - repeat A (AGA TAG GAT AGG CAT CTG GTA TA) and five copies of a 37 nt - repeat B (GGT GCC CCC GGT GAA GGG GGA AAA

GGA AGG TTG TAA G). There are five AB repeats, with one A at the end (located at positions 13,620-13,642).

Comparative analysis among mt genomes of *F. magna*, *Fa. hepatica* and *Fa. gigantica*

The difference between complete mt genomes of *F. magna* and *Fa. hepatica* was 22.66 % (3,290 nt), which is

Table 2 Comparison of nucleotides and predicted amino acids sequences among *Fascioloides magna* (Fm), *Fasciola hepatica* (Fh) and *Fasciola gigantica* (Fg)

| Gene | nt difference (%) | | | aa difference (%) | | |
|--------------|-------------------|-------|-------|-------------------|-------|-------|
| | Fm/Fh | Fm/Fg | Fh/Fg | Fm/Fh | Fm/Fg | Fh/Fg |
| <i>cox3</i> | 19.8 | 18.7 | 13.4 | 20.1 | 22.4 | 13.1 |
| <i>cytb</i> | 16.1 | 16.4 | 8.3 | 11.6 | 13.2 | 6.5 |
| <i>nad4L</i> | 15.3 | 16.1 | 8.4 | 12.1 | 15.4 | 5.5 |
| <i>nad4</i> | 21.4 | 20.9 | 13.5 | 21.7 | 20.8 | 10.6 |
| <i>atp6</i> | 21.3 | 21.2 | 13.8 | 22.0 | 20.2 | 13.3 |
| <i>nad2</i> | 21.1 | 22.8 | 11.6 | 25.4 | 24.7 | 11.4 |
| <i>nad1</i> | 15.0 | 14.9 | 8.4 | 13.0 | 14.3 | 6.6 |
| <i>nad3</i> | 19.0 | 19.0 | 10.6 | 13.4 | 15.1 | 7.6 |
| <i>cox1</i> | 13.1 | 12.8 | 9.1 | 9.2 | 8.4 | 5.5 |
| <i>cox2</i> | 19.2 | 19.2 | 11.6 | 14.4 | 15.4 | 6.5 |
| <i>nad6</i> | 24.2 | 26.2 | 16.3 | 22.5 | 27.8 | 13.2 |
| <i>nad5</i> | 21.5 | 19.8 | 13.7 | 23.6 | 22.8 | 12.3 |
| <i>rrnL</i> | 18.3 | 16.6 | 10.6 | | | |
| <i>rrnS</i> | 22.2 | 21.4 | 11.1 | | | |
| 22 tRNAs | 16.3 | 16.0 | 9.9 | | | |
| Overall | 22.7 | 22.7 | 12.2 | 17.97 | 18.24 | 9.4 |

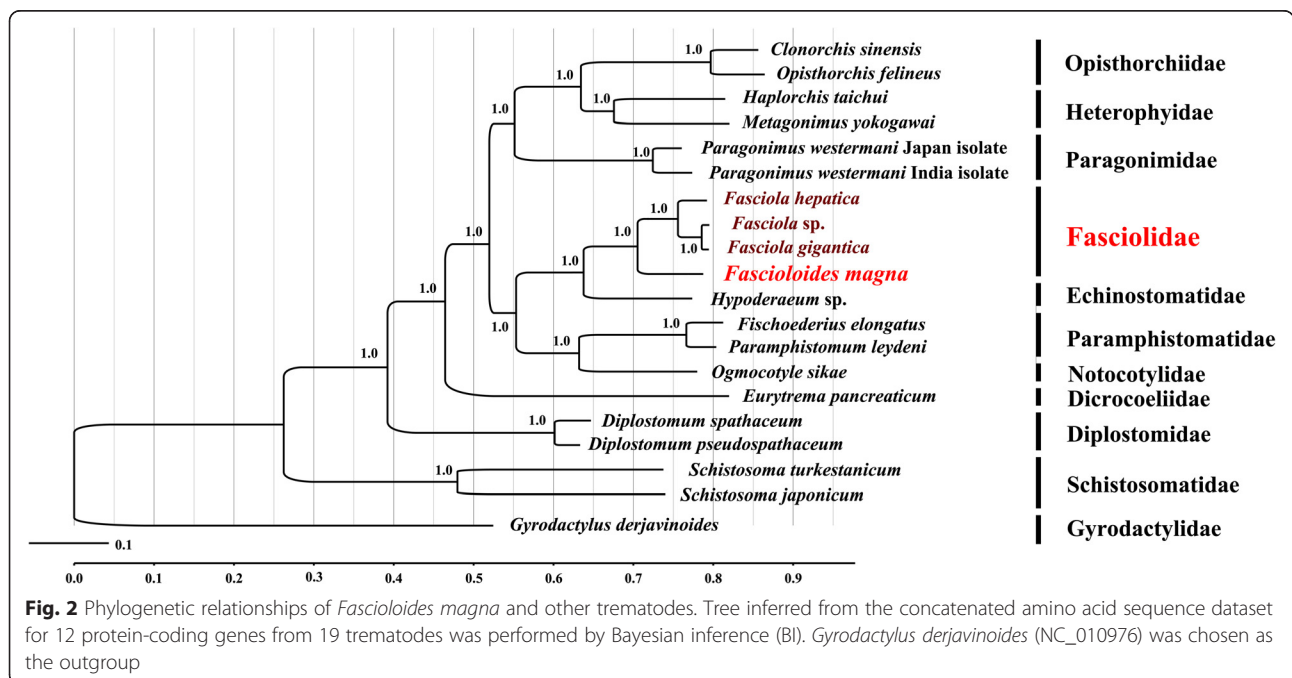
close to that between *F. magna* and *Fa. gigantica* (22.65 %, 3,297 nt) (Table 2). Considering the 12 protein-coding genes, different nucleotides were present at 18.80 % of positions (1,897 nt) between *F. magna* and *Fa. hepatica*, and at 18.62 % of positions (1,879 nt) between *F. magna* and *Fa. gigantica*. At the inferred amino

acid level, there were 605 substitutions (17.97 %) of amino acids between *F. magna* and *Fa. hepatica*, and 614 substitutions (18.24 %) between *F. magna* and *Fa. gigantica* (Table 2).

At the nucleotide level, sequence differences in protein-coding genes ranged from 13.1 to 24.2 % (between *F. magna* and *Fa. hepatica*) and from 12.8 to 26.2 % (between *F. magna* and *Fa. gigantica*), with *cox1*, *nad1*, *nad4L* and *cytb* being the most conserved genes, and *nad6*, *nad5* and *nad2* being the least conserved genes among those three species. At the amino acid level, sequence differences ranged from 9.2 to 25.4 % between *F. magna* and *Fa. hepatica*, and from 8.4 to 27.8 % between *F. magna* and *Fa. gigantica*: *cox1*, *cytb*, *nad4L* and *nad1* were the most conserved protein-coding genes, while *nad6*, *nad2* and *nad5* were the least conserved.

Comparisons between the mt genomes of *F. magna* and *Fasciola* spp., at both nucleotide and amino acid levels, indicate that the most conserved and the least conserved gene in the Fasciolidae are *cox1* and *nad6*, respectively. Besides, the *nad5* is highly variable, and genes of *nad4L* and *cytb* are rather conserved. These characteristics are in accordance with flukes of the families Paramphistomatidae and Notocotylidae [18, 28].

Nucleotide differences were also found in ribosomal RNA genes: between *F. magna* and *Fa. hepatica* (*rrnL*, 18.3 %; *rrnS*, 22.2 %) and between *F. magna* and *Fa. gigantica* (*rrnL*, 16.6 %; *rrnS*, 21.4 %) as well as in tRNA genes (16.3 % between *F. magna* and *Fa. hepatica* and 16.0 % between *F. magna* and *Fa. gigantica*). Meaningful sequence



comparisons of NCRs in mt genomes of the three fasciolid trematodes is not possible, because there is only one NCR present in *F. magna* mt genome, while in both *Fa. hepatica* and *Fa. gigantica* there are two NCRs.

Phylogenetic analysis

In the phylogenetic tree inferred from the concatenated amino acid sequence dataset of all 12 mt proteins (Fig. 2) *F. magna* clustered with three other *Fasciola* species with strong support (Bpp = 1). The closest family to the Fasciolidae is Echinostomatidae, represented by *Hypoderaeum* sp. The taxonomic relationships of the selected trematodes are in concordance with results of previous studies [17–19, 28]. Each node received the maximum possible nodal support (Bpp = 1).

In several recent phylogenetic studies, the *F. magna* was characterized only based on partial 28S rDNA [31] and combined ITS1, ITS2 and *nad1* sequences [32]. The relationship between the genera *Fasciola* and *Fasciolopsis* was considered as being very close and the genetic relationship between *F. magna* and *Fasciola jacksoni* (or *Fascioloides jacksoni*) is disputable [31–33]. Further studies are warranted to determine the mt genome of *Fa. jacksoni* and solve this controversy in the family Fasciolidae.

Conclusions

The present study determined the complete mt genome sequence of the pathogenic liver fluke *F. magna* and revealed its close relationship with the species of *Fasciola*. The complete mt genome data of *F. magna* provides a resource for further investigations of the phylogeny, epidemiology, biology and population genetics of the family Fasciolidae and other trematodes.

Additional files

Additional file 1: Table S1. Sequences of primers used to amplify fragments of *Fascioloides magna* mitochondrial genome. (DOCX 13 kb)

Additional file 2: Table S2. Comparison of A + T content of mitochondrial genomes of *Fascioloides magna* (Fm), *Fasciola hepatica* (Fh) and *Fasciola gigantica* (Fg). (DOCX 20 kb)

Abbreviations

mt, mitochondrial; mtDNA, mitochondrial DNA; rDNA, ribosomal DNA; BI, Bayesian inference; PBS, phosphate-buffered saline; SDS, sodium dodecyl sulphate; ITS, internal transcribed spacer; NCR, non-coding region

Acknowledgements

The authors thank Ms Miao-Miao Sun for technical assistance.

Funding

Project support was provided in part by the International Science & Technology Cooperation Program of China (Grant No. 2013DFA31840) and the “Special Fund for Agro-scientific Research in the Public Interest” (Grant No. 201303037). This research was also supported by grants of the Grant Agency of the Charles University in Prague (Grant No. 502313), Masaryk University institutional support (Grant No. MUNI/A/1325/2015), and Charles

University institutional/departmental support (Grant No. PRVOUK P41, UNCE 204017 and SW 260202/2015).

Availability of data and material

The datasets supporting the conclusions of this article are included within the article and its additional files. The complete mt genome sequence of *F. magna* is deposited in the GenBank database under the accession number KR006934.

Authors' contributions

XQZ and MK designed this study and critically revised the manuscript. JM and JJH performed the experiments, analysed data and drafted the manuscript. GHL and RL participated in sample collection and manuscript revision. All the authors read and approved the final manuscript.

Competing interests

The authors declare that they have no competing interests.

Consent for publication

Not applicable.

Ethics approval and consent to participate

This study was approved by the Animal Ethics Committee of Charles University, Czech Republic.

Author details

¹State Key Laboratory of Veterinary Etiological Biology, Key Laboratory of Veterinary Parasitology of Gansu Province, Lanzhou Veterinary Research Institute, Chinese Academy of Agricultural Sciences, Lanzhou, Gansu Province 730046, PR China. ²College of Veterinary Medicine, Hunan Agricultural University, Changsha, Hunan Province 410128, PR China. ³Department of Parasitology, Faculty of Science, Charles University, Viničná 7, Prague 2 128 44, Czech Republic. ⁴Department of Botany and Zoology, Faculty of Science, Masaryk University, Kotlářská 2, 611 37 Brno, Czech Republic.

Received: 6 June 2016 Accepted: 14 July 2016

Published online: 04 August 2016

References

1. Bassi R. Sulla cachessia ittero-vermicosa, o marciaia dei Cervi, causata dal *Distomum magnum*. *Medic Vet.* 1875;4:497–515.
2. Ward HB. On the structure and classification of North American parasitic worms. *J Parasitol.* 1917;4:1–12.
3. Králová Hromadová I, Bazsalovicsová E, Štefka J, Špakulová M, Vávrová S, Szemes T, et al. Multiple origins of European populations of the giant liver fluke *Fascioloides magna* (Trematoda: Fasciolidae), a liver parasite of ruminants. *Int J Parasitol.* 2011;41:373–83.
4. Pybus M. Survey of hepatic and pulmonary helminths of wild cervids in Alberta Canada. *J Wildlife Dis.* 1990;26:453–9.
5. Bazsalovicsová E, Králová Hromadová I, Minárik G, Bokorová S, Pybus M. Genetic interrelationships of North American populations of giant liver fluke *Fascioloides magna*. *Parasit Vectors.* 2015;8:288.
6. Kašný M, Beran L, Siegelová V, Siegel T, Leontovych R, Beránková K, et al. Geographical distribution of the giant liver fluke (*Fascioloides magna*) in the Czech Republic and potential risk of its further spread. *Vet Med.* 2012;57:101–9.
7. Ursprung J, Joachim A, Prosl H. Incidence and control of the American giant liver fluke, *Fascioloides magna*, in a population of wild ungulates in the Danubian wetlands east of Vienna. *Berl Munch Tierarztl.* 2005;119:316–23.
8. Wobeser BK, Schumann F. *Fascioloides magna* infection causing fatal pulmonary hemorrhage in a steer. *Can Vet J.* 2014;55:1093.
9. Foreyt W, Todd A. Development of the large American liver fluke, *Fascioloides magna*, in white-tailed deer, cattle, and sheep. *J Parasitol.* 1976;62:26–32.
10. Malcicka M. Life history and biology of *Fascioloides magna* (Trematoda) and its native and exotic hosts. *Ecol Evol.* 2015;5:1381–97.
11. Karamon J, Larska M, Jasik A, Sell B. First report of the giant liver fluke (*Fascioloides magna*) infection in farmed fallow deer (*Dama dama*) in Poland - pathomorphological changes and molecular identification. *B Vet I Pulawy.* 2015;59:339–44.

12. Pybus MJ. Liver flukes. In: Samuel WM, Pybus MJ, Kocan AA, editors. Parasitic diseases of wild mammals. Ames, Iowa: Iowa State Press; 2001. p. 121–49.
13. Semyenova SK, Morozova EV, Chisanfova GG, Gorokhov VV, Arkhipov IA, Moskvina AS, et al. Genetic differentiation in eastern European and western Asian populations of the liver fluke, *Fasciola hepatica*, as revealed by mitochondrial *nad1* and *cox1* genes. *J Parasitol*. 2006;92(3):525–30.
14. Králová Hromádová I, Špakulová M, Horáčková E, Turčeková L, Novobilský A, Beck R, et al. Sequence analysis of ribosomal and mitochondrial genes of the giant liver fluke *Fascioloides magna* (Trematoda: Fasciolidae): intraspecific variation and differentiation from *Fasciola hepatica*. *J Parasitol*. 2008;94(1):58–67.
15. Bazsalovicsová E, Králová Hromádová I, Radvánszky J, Beck R. The origin of the giant liver fluke, *Fascioloides magna* (Trematoda: Fasciolidae) from Croatia determined by high-resolution melting screening of mitochondrial *cox1* haplotypes. *Parasitol Res*. 2013;112:2661–6.
16. Cantacessi C, Mulvenna J, Young ND, Kašný M, Horák P, Aziz A, et al. A deep exploration of the transcriptome and “excretory/secretory” proteome of adult *Fascioloides magna*. *Mol Cell Proteomics*. 2012;11:1340–53.
17. Liu GH, Gasser RB, Young ND, Song HQ, Ai L, Zhu XQ. Complete mitochondrial genomes of the ‘intermediate form’ of *Fasciola* and *Fasciola gigantica*, and their comparison with *F. hepatica*. *Parasit Vectors*. 2014;7:150.
18. Ma J, He JJ, Liu GH, Zhou DH, Liu JZ, Liu Y, et al. Mitochondrial and nuclear ribosomal DNA dataset supports that *Paramphistomum leydeni* (Trematoda: Digenea) is a distinct rumen fluke species. *Parasit Vectors*. 2015;8:201.
19. Brabec J, Kostadinova A, Scholz T, Littlewood DTJ. Complete mitochondrial genomes and nuclear ribosomal RNA operons of two species of *Diplostomum* (Platyhelminthes: Trematoda): a molecular resource for taxonomy and molecular epidemiology of important fish pathogens. *Parasit Vectors*. 2015;8:336.
20. Yang X, Gasser RB, Koehler AV, Wang LX, Zhu KX, Chen L, et al. Mitochondrial genome of *Hypoderaeum conoideum* - comparison with selected trematodes. *Parasit Vectors*. 2015;8:97.
21. Gasser RB, Hu M, Chilton NB, Campbell BE, Jex AJ, Otranto D, et al. Single-strand conformation polymorphism (SSCP) for the analysis of genetic variation. *Nat Protoc*. 2007;1:3121–8.
22. Morgan J, Blair D. Nuclear rDNA ITS sequence variation in the trematode genus *Echinostoma*: an aid to establishing relationships within the 37-collar-spine group. *Parasitology*. 1995;111:609–15.
23. Lowe TM, Eddy SR. tRNAscan-SE: a program for improved detection of transfer RNA genes in genomic sequence. *Nucleic Acids Res*. 1997;25:955–64.
24. Castoe TA, Parkinson CL. Bayesian mixed models and the phylogeny of pitvipers (Viperidae: Serpentes). *Mol Phylogenet Evol*. 2006;39:91–110.
25. Ronquist F, Huelsenbeck JP. MrBayes 3: Bayesian phylogenetic inference under mixed models. *Bioinformatics*. 2003;19:1572–4.
26. Chen YY, Chen S, Kang J, Fang H, Dao H, Guo WZ, et al. Evolving molecular epidemiological profile of human immunodeficiency virus 1 in the southwest border of China. *PLoS One*. 2014;9:e107578.
27. Le TH, Blair D, McManus DP. Complete DNA sequence and gene organization of the mitochondrial genome of the liverfluke, *Fasciola hepatica* L. (Platyhelminthes; Trematoda). *Parasitology*. 2001;123:609–21.
28. Ma J, He JJ, Liu GH, Blair D, Liu LZ, Liu Y, et al. Mitochondrial genome of *Ogmocotyle sikae* and implications for phylogenetic studies of the Notocotylidae trematodes. *Infect Genet Evol*. 2015;37:208–14.
29. Littlewood DTJ, Lockyer AE, Webster BL, Johnston DA, Le TH. The complete mitochondrial genomes of *Schistosoma haematobium* and *Schistosoma spindale* and the evolutionary history of mitochondrial genome changes among parasitic flatworms. *Mol Phylogenet Evol*. 2006;39:452–67.
30. Biswal DK, Chatterjee A, Bhattacharya A, Tandon V. The mitochondrial genome of *Paragonimus westermani* (Kerbert, 1878), the Indian isolate of the lung fluke representative of the family Paragonimidae (Trematoda). *Peer J*. 2014;2:e484.
31. Tkach W, Kudlai O, Kostadinova A. Molecular phylogeny and systematics of the Echinostomatoidea Looss, 1899 (Platyhelminthes: Digenea). *Int J Parasitol*. 2015;46:15.
32. Heneberg P. Phylogenetic data suggest the reclassification of *Fasciola jacksoni* (Digenea: Fasciolidae) as *Fascioloides jacksoni* comb. nov. *Parasitol Res*. 2013;112:1679–89.
33. Lotfy WM, Brant SV, DeJong RJ, Le TH, Demiaszkiewicz A, Rajapakse RJ, et al. Evolutionary origins, diversification, and biogeography of liver flukes (Digenea, Fasciolidae). *Am J Trop Med Hyg*. 2008;79:248–55.

Submit your next manuscript to BioMed Central and we will help you at every step:

- We accept pre-submission inquiries
- Our selector tool helps you to find the most relevant journal
- We provide round the clock customer support
- Convenient online submission
- Thorough peer review
- Inclusion in PubMed and all major indexing services
- Maximum visibility for your research

Submit your manuscript at
www.biomedcentral.com/submit

