

# A Novel Nomogram for Predicting Risk Factors and Outcomes in Bloodstream Infections Caused by *Klebsiella pneumoniae*

Yingsha Chen<sup>1,2</sup>, Shuaibing Ying<sup>1</sup>, Lushun Jiang<sup>1</sup>, Shaohua Dong<sup>1</sup>, Jinyao Dai<sup>1</sup>, Xuehang Jin<sup>1</sup>, Wei Yu<sup>1</sup>, Yunqing Qiu<sup>1</sup>

<sup>1</sup>State Key Laboratory for Diagnosis and Treatment of Infectious Diseases, National Clinical Research Center for Infectious Diseases, Collaborative Innovation Center for Diagnosis and Treatment of Infectious Diseases, the First Affiliated Hospital, Zhejiang University School of Medicine, Hangzhou, People's Republic of China; <sup>2</sup>Infectious Diseases, the Second Affiliated Hospital, Zhejiang University School of Medicine, Hangzhou, People's Republic of China

Correspondence: Wei Yu; Yunqing Qiu, State Key Laboratory for Diagnosis and Treatment of Infectious Diseases, National Clinical Research Center for Infectious Diseases, Collaborative Innovation Center for Diagnosis and Treatment of Infectious Diseases, the First Affiliated Hospital, Zhejiang University School of Medicine, Hangzhou, People's Republic of China, Tel +86-571-87236606, Fax +86-571-87236606, Email wyu@zju.edu.cn; qiuyq@zju.edu.cn

**Background:** Our study aimed to explore the risk factors in bloodstream infections *Klebsiella pneumoniae* (BSI-KP) patients and establish nomograms to predict the probability of BSI-CRKP and the prognosis of BSI-KP.

**Methods:** A total of 252 BSI-KP patients were enrolled from a tertiary teaching hospital between January 1, 2015, and May 31, 2020. Risk factors associated with BSI-CRKP and factors associated with the 30-day mortality were identified using LASSO analysis, univariate and multivariate analysis.

**Results:** There were 121 (48.0%) patients with carbapenem-resistant *K. pneumoniae* (CRKP) and 131 (52.0%) patients with carbapenem-susceptible *K. pneumoniae* (CSKP). The multivariate logistic regression analysis demonstrated that gastric tube indwelling before BSI (OR=2.442, P=0.043) and more types of antibiotics use before BSI (OR=1.305, P=0.009) were independent risk factors for BSI-CRKP. And previous transplantations, prior ICU stay, gastric tube indwelling before BSI, more types of antibiotics use before BSI, lower Hb and cholinesterase were associated with CRKP-BSI. The C-index of models indicated its good accuracy (C-index 0.816, 95% CI 0.763–0.868). In patients with BSI-CRKP, further logistic regression analysis revealed urinary catheterization (OR=0.298, P=0.017) was found to be an independent risk factor for 30-day mortality, while ceftazidime/avibactam use (OR=8.438, P=0.003) was an independent favorable prognostic factor. The nomogram predicated CRKP, ICU hospitalization, more types of antibiotics use, tigecycline, PLT, urinary catheterization were associated with 30-day mortality in patients with BSI-KP. The discriminative ability of the predictive model, as assessed by C-index, was 0.813 (95% CI: 0.780–0.867).

**Conclusion:** Previous transplantations, prior ICU stay, gastric tube indwelling before BSI, more types of antibiotics use before BSI, lower Hb and cholinesterase represent significant risk factors for the development of BSI-CRKP. Our nomogram predicated thrombocytopenia was a sign for poor prognosis. Tigecycline resulted in higher mortality for patients with BSI-KP. Rational use of nomograms may help clinicians make better Clinical decisions when treating BSI-KP patients.

**Keywords:** carbapenem-resistant *Klebsiella pneumoniae*, prognostic model

## Introduction

*Klebsiella pneumoniae* (KP) has emerged as a major clinical and public health threat, owing to increasing prevalence of healthcare-associated infections caused by multidrug-resistant strains with extended-spectrum  $\beta$ -lactamases or carbapenemases.<sup>1</sup> The proportion of KP increased from 6.6% during 2001–2004 to 9.9% during 2013–2016.<sup>2</sup> SENTRY Antimicrobial Surveillance Program data showed BSI-KP accounting for 7.7%.<sup>3</sup> Recent studies demonstrated carbapenem-resistant *Klebsiella pneumoniae* (CRKP) is associated with a prolonged hospital stay, increased medical costs and higher mortality for patients.<sup>4</sup>

Hospital-acquired infections, intensive care unit (ICU) stay, illness severity, and inappropriate antibiotic Treatment have been identified as risk factors contributing to increased mortality rates in patients with BSI-CRKP.<sup>5,6</sup> However, current studies only briefly introduced several risk factors for mortality rates in patients with BSI-CRKP. In addition, these factors were partly varied or contradictory. Therefore, a personalized prediction model is needed for patients with BSI-CRKP. The nomogram, as an integrated model, has been widely used as a predictive method for clinicians. In this retrospective analysis, we aimed to establish nomograms to predict the probability of BSI-CRKP and the prognosis of BSI-KP, in order to improve infection control and clinical treatment.

## Methods

### Study Cohort and Route

This retrospective cohort study was carried out at The First Affiliated Hospital, Zhejiang University of Medicine, a 5000-bed National-level hospital in Eastern China. The study focused on patients with BSI-KP (including CRKP and carbapenem-susceptible *K. pneumoniae* (CSKP) between January 1, 2015, and May 31, 2020. The inclusion criteria were as follows: (i) patients older than 16 years and less than 90 years, (ii) patients confirmed by blood culture positive for KP and met the diagnostic criteria for BSI. Only the first episode of bloodstream infection was included if there were repeated episodes of BSI-KP during the study period. Patient demographics, clinical and microbiological data, Laboratory tests, antimicrobial treatment and outcome, past history and underlying disease, and other relevant information were obtained from the hospitals electronic medical record system. Acute Physiology and Chronic Health Evaluation (APACHE) II and Sequential Organ Failure Assessment (SOFA) scores were used to assess the severity of the disease.

The predefined route of this study is demonstrated in [Figure 1](#). 30-day mortality was used as treatment outcome. The primary end-point was all-cause death, that is, crude death. In view of the current situation in China, many families are reluctant to let sick people die outside. Those who died or gave up treatment due to their worsening condition and were discharged automatically during hospitalization were defined as death cases. The risk factors for BSI-CRKP and 30-day mortality were further analyzed.

### Definitions

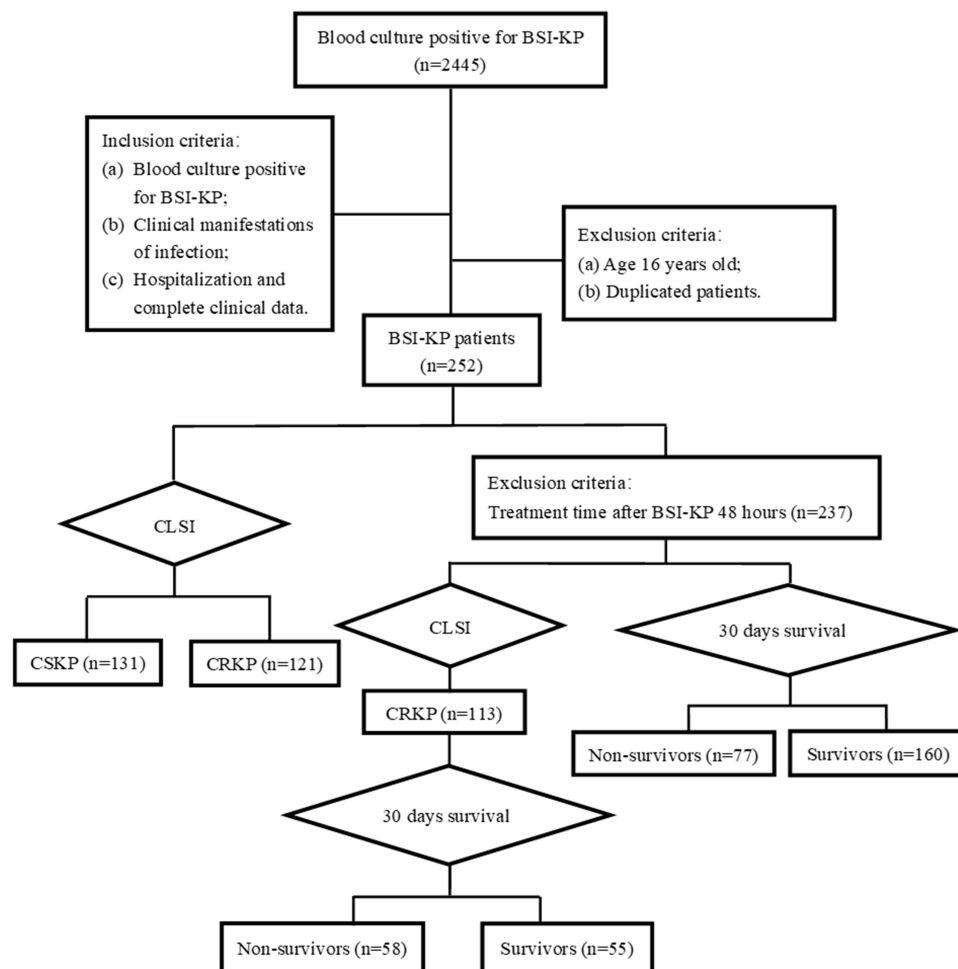
The onset of BSI-KP was defined as the collection date of a positive blood culture. Species confirmation and sensitivity testing were performed using standard biochemical methods, via a VITEK 2 automated system (bioMérieux, Marcy l'Etoile, France). Carbapenem resistance was defined as isolates resistant to imipenem, meropenem or ertapenem according to Clinical and Laboratory Standards Institute (CLSI) interpretation.<sup>7</sup> Tigecycline susceptibility was determined using the US Food and Drug Administration (FDA) breakpoints.<sup>8</sup>

Corticosteroid therapy was defined as the administration of at least 20 mg of a prednisone equivalent for a period of  $\geq 7$  days. Antimicrobial drug exposure was defined as the use of antibiotics for more than 48h within the 30 days prior to onset of BSI. All antibiotics in the treatment regimen were administered for over a period of 48 hours. The dosage of tigecycline used to treat BSI-KP was divided into regular dose (initial loading dose of 100 mg followed by 50 mg every 12 hours) and high dose (100 mg every 12 hours) throughout the study period. Severity of illness was assessed using APACHE II and SOFA scoring system.

### Statistical Analysis

For continuous variables, results were presented as mean  $\pm$  standard deviation or median (IQR) as appropriate. Categorical variables were presented by numbers with percentages. Continuous variables were assessed for normality test and analyzed using *t*-test or Mann–Whitney *U*-test. For categorical variables, chi-square test or two-tailed Fisher's exact test was employed appropriately. The strength of associations was assessed in terms of the odds ratio (OR) and 95% confidence interval (CI).

Multivariate analysis was performed after further screening for variables with a P-value of  $<0.05$  in the univariate analysis. LASSO analysis, univariate and multivariate analysis were used to identify independent risk factors. The LASSO regression analyses were performed to screen candidate predictors before obtaining a final prediction model. The



**Figure 1** Flowchart of the case selection process.

**Abbreviations:** BSI, bloodstream infection; CLSI, Clinical and Laboratory Standards Institute; CSKP, carbapenem-susceptible *K. pneumoniae*; CRKP, carbapenem-resistant *K. pneumoniae*.

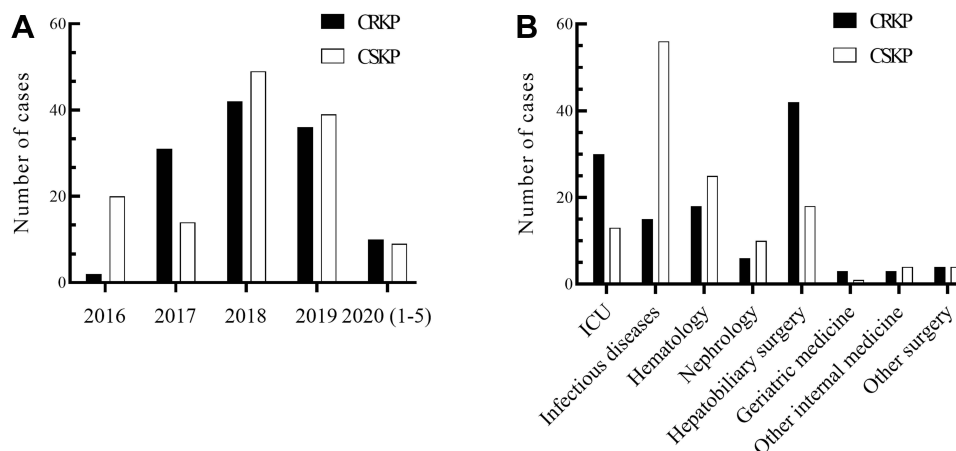
final multiple regression model is constructed from the set of candidate variables by gradually removing predictor variables based on p-values.<sup>9</sup> The nomogram for predicting BSI-CRKP probability and prognosis of BSI-KP were established basing on the regression model by employing the R package. Model discrimination was assessed with calibration curves and C-index basing on Bootstrap. All statistical tests were two-tailed, and a P-value <0.05 indicated statistically significant. Data were performed using SPSS Version 22.0 and RStudio.

## Results

### Incidence of BSI-KP

A total of 252 non-duplicate BSI-KP were included in this study. There were 121 CRKP and 131 CSKP. The number of BSI-KP, especially for CRKP, showed a clear upward trend during 2017 to 2018, reaching the highest in 2018 (Figure 2A).

The average age was 52.7 years old, without significant difference between CRKP and CSKP patients. There were 174 patients (69.0%) were male. The incidence of BSI-CRKP in the department of hepatobiliary surgery and ICU was higher than other departments (Figure 2B). However, the incidence of BSI-CSKP in the department of infectious diseases and hematology was higher than other departments.



**Figure 2** The number of BSI-KP cases. **(A)** The number of CRKP cases and CSKP from 2016 to May 2020; **(B)** The departments distribution of patients with BSI-KP.

## Risk Factors Associated with BSI-CRKP

Univariate logistic analysis revealed ICU hospitalization, pulmonary disease, cardiac, previous transplantations, previous surgery, previous hospitalization, previous corticosteroid or immunosuppressant use, previous ICU stay, prior antibiotic use, prior tigecycline use or a nonsurgical invasive procedure before BSI were associated to CRKP ([Supplementary Table 1](#)). Moreover, patients with BSI-CRKP were more likely to have higher neutrophil proportion, lower Hb, lower platelet (PLT), lower Cholinesterase or serum total bilirubin (TBIL) before BSI within 2 days. There was no significant difference between CRKP and CSKP in terms of APACHE II and SOFA scores. Variables were further screened by LASSO regression to eliminate variables with no clinical significance, and seven factors were incorporated into the model. The multivariate logistic regression analysis demonstrated that BSI-CRKP was independently associated with gastric tube indwelling before BSI (OR=2.442, P=0.043) and more types of antibiotics use before BSI (OR=1.305, P=0.009). To visualize the logistic regression model, a nomogram predicting the probability of BSI-CRKP was constructed ([Figure 3](#)), including previous transplantations, prior ICU stay, gastric tube indwelling, more types of antibiotics use before BSI, Hb and Cholinesterase. The C-index of models indicated its good accuracy (C-index 0.816, 95% CI 0.763–0.868). Calibration curve using the bootstrap method (1000 times) was plotted ([Figure 4](#)), which showed a good agreement between the predicted model and the actual observations.

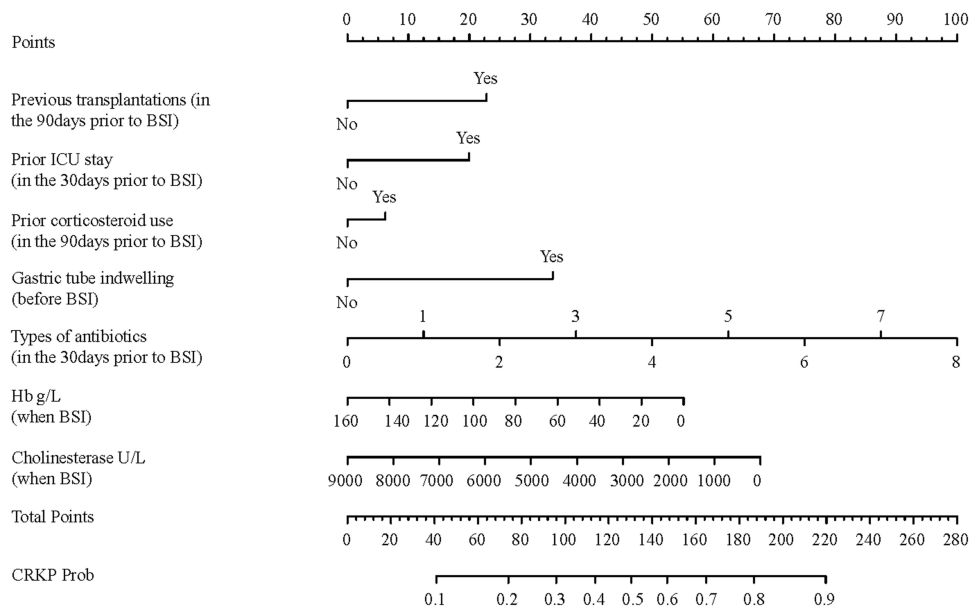
## Risk Factors for 30-Day Mortality in Patients with BSI-CRKP

A total of 113 patients were included in this analysis ([Supplementary Table 2](#)). The rate of 30-day mortality among BSI-CRKP patients was 51.3%. Previous transplantations, past corticosteroid or immunosuppressant use, urinary catheterization, arterial catheterization, and use of more than 2 antibiotics were risk factors for 30-day mortality among BSI-CRKP patients. Further logistic regression multivariate analysis revealed urinary catheterization (OR=0.298, P=0.017) was found to be an independent risk factor for 30-day mortality in patients with BSI-CRKP, while the ceftazidime/avibactam use (OR=8.438, P=0.003) was an independent favorable prognostic factor.

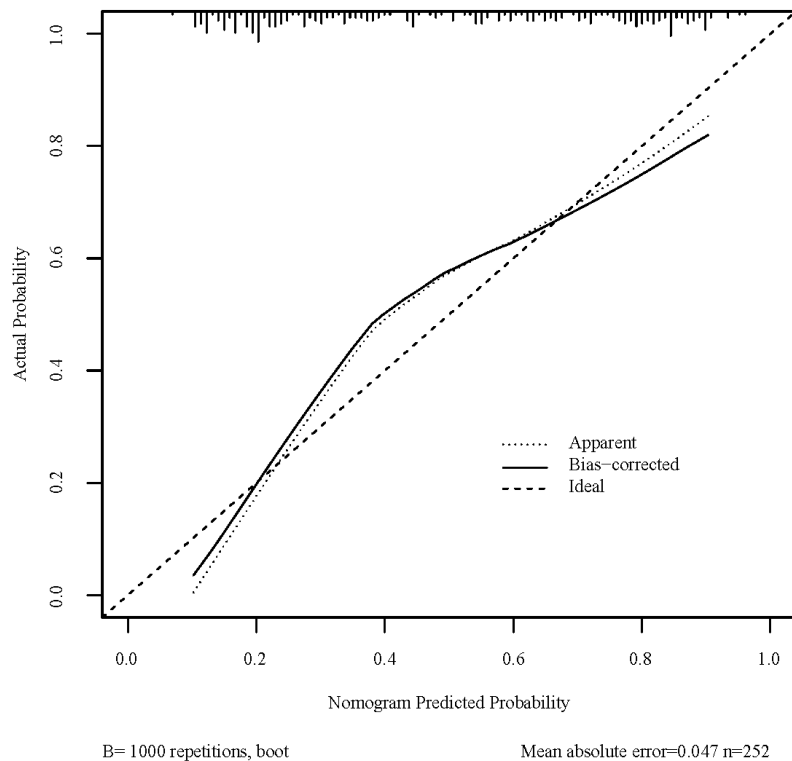
## The Nomogram to Predict the 30-Day Survival in Patients with BSI-KP

[Table 1](#) showed the main characteristics of the BSI-KP survivor and non-survivor subgroups. Patients treated for less than 48 hours after infection were excluded. Among all variables evaluated, univariate logistic regression analysis showed that more than 30 factors were significantly correlated with 30-day mortality for BSI-KP. In addition, BSI-KP non-survivors generally had lower Hb, lower platelet, lower cholinesterase, higher international normalized ratio (INR) and TBIL before BSI within 2 days.

Further LASSO regression analysis was used to screen predicting features of 30-day survival in patients with BSI-KP. A multivariate predictive model was established, including CRKP, ICU hospitalization, types of antibiotics, tigecycline,



**Figure 3** Nomogram for predicting predict the probability of BSI-CRKP. Each significant factor is shown in the variable axis, the seven obtained scores are added up to achieve a total score on the bottom total points scale. Through the total score obtained, the vertical downward and the lower probability segment line intersects, and the CRKP Prob of an individual patient can be estimated.  
**Abbreviations:** CRKP, carbapenem-resistant *K. pneumoniae*; Hb, hemoglobin.



**Figure 4** Calibration curves of nomogram for predicting predict the probability of BSI-CRKP. The diagonal dotted line is an ideal line, indicating perfect prediction of the nomogram. The solid line represents the actual predictive performance of the nomogram. The closer the solid line to the ideal line, the better the predictive accuracy of the nomogram.

**Table 1** Analysis of Risk Factors for 30-Day Mortality in 237 Patients with BSI-KP

	Univariate Analysis			Multivariate Analysis			
	Survivors	Non-Survivors	P value	Sig	Exp(B)	95% CI for Exp(B)	
	(N=160)	(N=77)				Lower	Upper
Gender, male, n (%)	115 (71.9)	53 (68.8)	0.629				
Age, years, mean±SD	52.48±17.58	53.12±17.93	0.821				
ICU hospitalization	9 (5.6)	29 (37.7)	<0.001	0.000	0.088	0.030	0.258
CRKP	56 (35)	57 (74)	<0.001	0.051	0.414	0.171	1.006
<b>Underlying Diseases</b>							
Pulmonary disease	30 (18.8)	29 (37.7)	0.002				
Diabetes	39 (24.4)	16 (20.8)	0.539				
Hepatitis	45 (28.1)	23 (29.9)	0.781				
Tumor	53 (33.1)	30 (39)	0.378				
Hypertension	42 (26.3)	24 (31.2)	0.429				
Cardiac	4 (2.5)	5 (6.5)	0.253				
Cerebral infarction	6 (3.8)	3 (3.9)	1.000				
Renal insufficiency	25 (15.6)	13 (16.9)	0.805				
<b>Before BSI (within 90 days)</b>							
Previous trauma	8 (5.0)	2 (2.6)	0.605				
Previous transplantations	49 (30.6)	39 (50.6)	0.003				
Previous hospitalization	80 (50)	51 (66.2)	0.019				
Previous surgery	78 (48.8)	46 (59.7)	0.113				
Previous radiotherapy and chemotherapy	37 (23.1)	25 (32.5)	0.125				
Previous corticosteroid use	72 (45)	72 (45)	<0.001				
Previous immunosuppressant use	63 (39.4)	51 (66.2)	<0.001				
<b>Before BSI (within 30 days)</b>							
Prior ICU stay	45 (28.1)	33 (42.9)	0.024				
ICU stay days	2.98±11.67	8.90±17.22	0.004				
<b>Invasive procedure before BSI</b>							
Urinary catheterization	61 (38.1)	51 (66.2)	<0.001				
Venous catheterization	150 (93.8)	77 (100)	0.058				
Arterial catheterization	82 (51.2)	52 (67.5)	0.018				
Gastric tube indwelling	51 (31.9)	43 (55.8)	<0.001				
Mechanical ventilation	55 (34.4)	41 (53.2)	0.006				
Tracheotomy	4 (2.5)	7 (9.1)	0.054				
Bronchoscopy	7 (4.4)	13 (16.9)	0.001				
Puncture drainage	93 (58.1)	49 (63.6)	0.417				

<b>Invasive procedure after BSI</b>							
Urinary catheterization	60 (37.5)	57 (74)	<0.001	0.033	0.432	0.200	0.933
Venous catheterization	158 (98.8)	76 (98.8)	1.000				
Arterial catheterization	97 (60.6)	68 (88.3)	<0.001				
Gastric tube indwelling	60 (37.5)	48 (62.3)	<0.001				
Mechanical ventilation	39 (24.4)	44 (57.1)	<0.001				
CRRT	13 (8.1)	13 (16.9)	0.043				
Tracheotomy	15 (9.4)	22 (28.6)	<0.001				
Bronchoscopy	10 (6.3)	12 (15.6)	0.021				
Puncture drainage	125 (78.1)	53 (68.8)	0.121				
<b>Drug use in the 30 days prior to BSI</b>							
Prior antibiotic use	134 (83.8)	65 (84.4)	0.896				
Types of antibiotics	1.72±1.34	2.95±1.98	<0.001	0.345	0.893	0.706	1.130
Polymyxin use	7(4.4)	6(7.8)	0.437				
Carbapenem antibiotic use	77(48.1)	50(64.9)	0.015				
Beta-lactamase inhibitors use	54(33.8)	35(45.5)	0.081				
Cephalosporin antibiotics use	33(20.8)	26(33.8)	0.03				
Fluoroquinolone use	31(19.4)	25(32.5)	0.026				
Aminoglycosides use	2(1.3)	7(9.1)	0.009				
Vancomycin use	15(9.4)	20(26)	0.001				
Tigecycline use	21 (13.1)	25 (32.5)	<0.001				
High-dose tigecycline use	2 (9.5)	11 (44)	0.010				
Teicoplanin use	12 (7.5)	17 (22.1)	0.001				
Linezolid use	20 (12.5)	13 (16.9)	0.361				
<b>Drug use after BSI</b>							
Tigecycline use	55 (34.4)	55 (71.4)	<0.001	0.124	0.487	0.194	1.219
High-dose tigecycline use	36 (67.9)	37 (69.8)	0.834				
Use of more than 2 antibiotics	124 (78.5)	67 (88.2)	0.073				
<b>Before BSI (within 2 days)</b>							
WBC	8.87±6.84	8.24±7.32	0.319				
Neutrophil proportion	81.52±72.31	76.84±30.25	0.062				
Hb	93.91±27.67	80.71±25.10	<0.001				
PLT	128.77±103.65	71.26±70.64	<0.001	0.000	1.013	1.007	1.019
CRP	107.27±87.82	102.77±71.24	0.904				
PCT	13.00±23.35	13.61±24.54	0.909				
INR	1.31±1.36	1.72±3.03	<0.001				
Albumin	32.93±5.27	31.98±5.20	0.197				

(Continued)

Table 1 (Continued).

	Univariate Analysis			Multivariate Analysis			
	Survivors	Non-Survivors	P value	Sig	Exp(B)	95% CI for Exp(B)	
	(N=160)	(N=77)				Lower	Upper
Albumin<30	41 (25.8)	21 (27.3)	0.808				
ALT	93.59±135.78	186.50±454.91	0.489				
AST	109.69±282.40	274.53±860.21	0.531				
Cholinesterase	3550.61±1562.68	2638.93±1377.78	<0.001				
TBIL	75.64±353.90	88.39±124.66	0.004				
Cr	102.25±118.19	102.90±108.52	0.822				
<b>After BSI (within 7 days)</b>							
WBC	9.23±7.36	10.46±7.04	0.042				
Neutrophil proportion	78.95±50.45	77.29±22.52	0.03				
Hb	88.41±20.20	77.22±11.77	<0.001				
PLT	169.79±122.49	102.63±75.05	<0.001				
CRP	52.80±45.40	87.06±57.42	<0.001				
PCT	4.25±9.18	10.61±21.39	<0.001				
INR	1.549±3.58	1.547±0.33	<0.001				
Albumin	35.13±24.64	33.63±3.34	0.385				
Albumin<30	33 (20.6)	10 (13)	0.153				
ALT	46.56±50.30	62.30±97.17	0.006				
AST	41.02±59.83	67.42±126.83	<0.001				
Cholinesterase	3133.48±1331.56	2684.55±716.98	0.022				
TBIL	52.59±202.24	82.50±89.39	<0.001				
Cr	94.96±104.61	99.08±83.86	0.002				
APACHE	11.11±4.47	12.47±5.04	0.036				
SOFA	6.20±3.61	7.91±3.54	0.001				

**Abbreviations:** BSI, bloodstream infections; ICU, intensive care unit; CRRT, continuous renal replacement therapy; WBC, white blood cells; Hb, hemoglobin; PLT, platelet; CRP, C-reactive protein; PCT, procalcitonin; INR, international normalized ratio; ALT, alanine aminotransferase; AST, aspartate aminotransferase; TBIL, serum total bilirubin; Cr, creatinine; APACHE, Acute Physiology and Chronic Health Evaluation; SOFA, Sequential Organ Failure Assessment; CRKP, carbapenem-resistant *K. pneumoniae*.



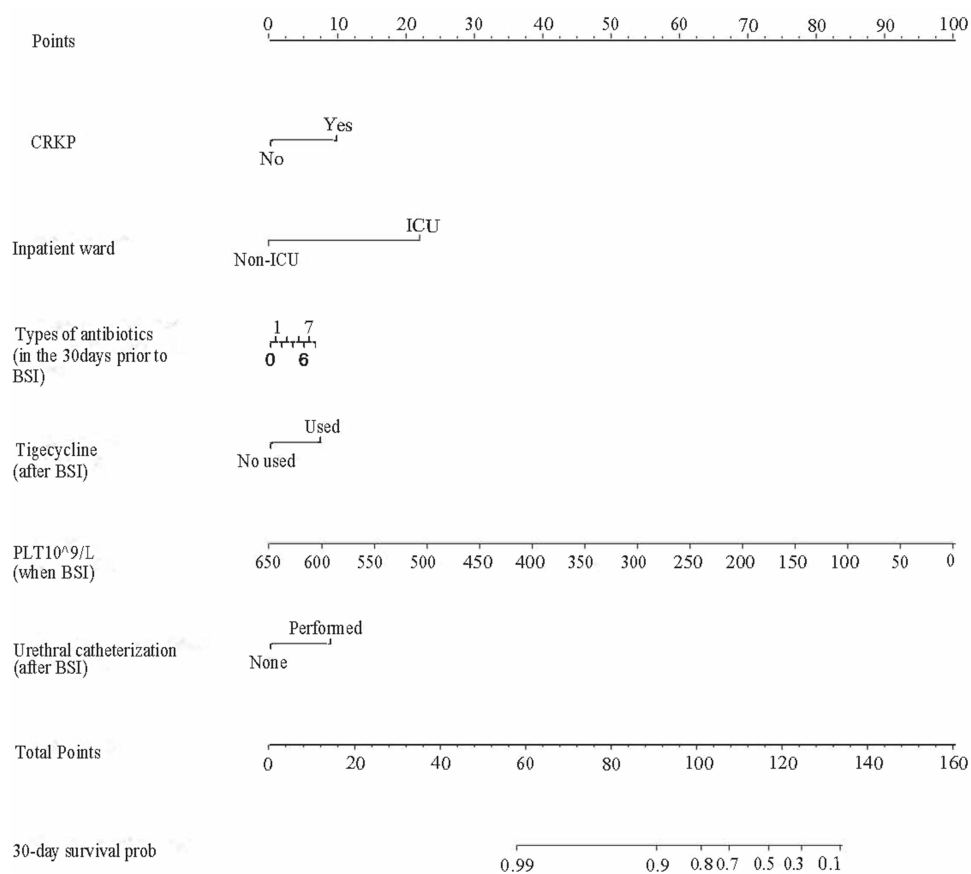
PLT, urinary catheterization (Figure 5). The 30-day mortality could be measured by the sum of the scores for each predictor variable through the nomogram. It is worth mentioning that the weight of ICU hospitalization is maximum.

The discriminative ability of the predictive model, as assessed by C-index, was 0.813 (95% CI: 0.780–0.867). There was a strong consistency between the predicted mortality rate and the actual mortality rate (Figure 6A). Meanwhile, 81 patients were used for further model external validation (Figure 6B). The C-index based on the validation set was 0.700 (0.550–0.832). The shape of the curve on the calibration plots indicated that the external validation model was well-calibrated.

## Discussion

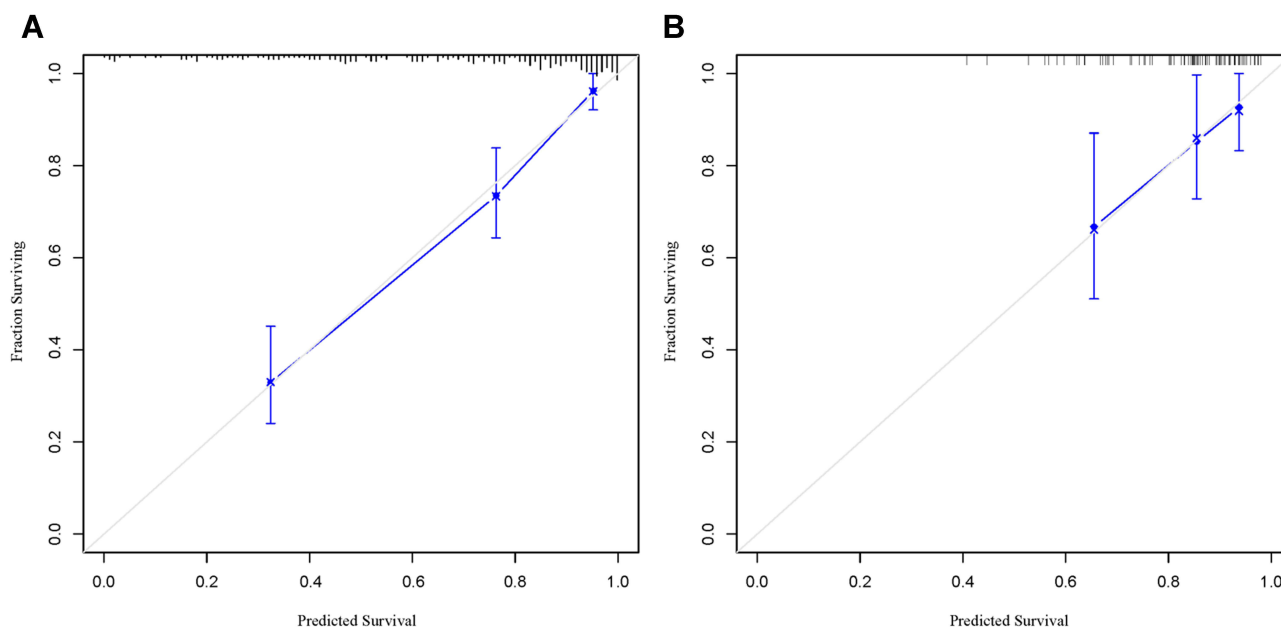
CRKP has the potential to extensively disseminate and has a high fatality rate, presenting a great challenge to public health around the world.<sup>1</sup> Several risk factors had been linked to BSI-CRKP and mortality.<sup>5,6</sup> Data from 252 BSI-KP patients were evaluated, demonstrating previous transplantations, prior ICU stay, gastric tube indwelling before BSI, more types of antibiotics use before BSI, lower Hb and Cholinesterase were associated with CRKP-BSI, most of which were consistent with previous Research.<sup>5,10</sup> Antimicrobial use prior to BSI is known as an important factor in drug-resistant infections.<sup>11,12</sup> However, some studies showed no association between CRKP infection and prior antibiotic use.<sup>6</sup> In our study, we found that the frequent antibiotic changes before BSI-KP was likely to promote the occurrence of carbapenem-resistant *Klebsiella pneumoniae*.

It was interesting to note that decreased cholinesterase was a risk factor for BSI-CRKP, which has been rarely reported. As is well known, the acetylcholinesterase plays a crucial role in the restoration of cholinergic neurons after



**Figure 5** Nomogram for predicting the 30-day survival of patients with BSI-KP. Each significant factor is shown in the variable axis, the six obtained scores are added up to achieve a total score on the bottom total points scale. Through the total score obtained, the vertical downward and the lower probability segment line intersects, and the 30-day survival probability of an individual patient can be estimated.

**Abbreviations:** CRKP, carbapenem-resistant *K. pneumoniae*; ICU, intensive care unit; PLT, platelet.



**Figure 6** Calibration curves and validation cohort of nomogram. (A) calibration curves; (B) validation cohort. The diagonal dotted line is an ideal line, indicating perfect prediction of the nomogram. The solid line represents the actual predictive performance of the nomogram. The closer the solid line to the ideal line, the better the predictive accuracy of the nomogram.

activation by hydrolyzing the neurotransmitter acetylcholine. Sunita et al, mentioned that overuse of acetylcholinesterase inhibitors led to resistance in organisms via mutations in the corresponding binding site in their study.<sup>13</sup> However, this fundamental question awaits further investigation.

Further nomogram predicated CRKP, ICU hospitalization, types of antibiotics, tigecycline, PLT, urinary catheterization were associated with 30-day mortality in patients with BSI-KP. Previous studies have demonstrated CRKP patients had shorter survival time than CSKP patients.<sup>14,15</sup> Similar to these studies, we also found CRKP was an important risk factor for 30-day mortality rates. The main reason is due to limited antibiotic options for CRKP, resulting in poor prognosis. Prior antibiotics use has been identified as an important factor related to antibiotics resistance.<sup>11,12</sup> Our study revealed that the number of antibiotics was closely associated with 30-day mortality. The more antibiotics used before BSI, the worse the prognosis in patients with BSI-KP. Therefore, careful attention should be paid to the frequent replacement of the antibiotics before BSI-KP.

It is of note that tigecycline regimens for patients with BSI-CRKP remains controversial. Previous meta-analysis indicated that tigecycline had no more effective than standard antimicrobial agents for serious infections.<sup>16</sup> In addition, FDA has warned against the off-label use of tigecycline to treat nosocomial pneumonia due to increased mortality risk.<sup>17</sup> In the present study, tigecycline resulted in higher mortality. Recently, several studies suggested high-dose treatment of tigecycline (200 mg loading dose, followed by 100 mg every 12 h) was superior to standard dosage (100 mg loading dose, followed by 50 mg every 12 h) for 30-day survival rate (OR 2.25 [0.55; 9.24]).<sup>18</sup>

However, our study did not find the same phenomenon. Thus, further research is needed to study for optimized use of tigecycline against BSI-KP.

Interestingly, our nomogram predicated thrombocytopenia was a sign of poor prognosis. Qin Wu et al reported persistent thrombocytopenia was associated with poorer outcomes in critical care patients.<sup>19</sup> In mouse KP infection models, thrombocytopenia was observed as well.<sup>20</sup> Furthermore, hypermucoviscous KP strains caused more obvious thrombocytopenia than classic KP strains.<sup>20</sup> These may be related to lipopolysaccharide (LPS) released by KP.<sup>20</sup> LPS could stimulate cell apoptosis via many pathways, such as TLR4/NF- $\kappa$ B and JNK/MAPK.<sup>21,22</sup> The intrinsic apoptosis pathway was of importance to platelet survival.<sup>23,24</sup>

Although the results are meaningful, there were still several limitations in this study. Firstly, this study was retrospective form and the number of patients remained small. Secondly, we did not identify different virulence

genes in CRKP and CSKP. In addition, it could be further optimized in the initial design of the study grouping, replacing the survivors/non-survivors with the treatment success/treatment failure. The corresponding groupings were well defined in the study of Youhua Yuan et al.<sup>25</sup>

## Conclusion

This study demonstrated that previous transplantations, prior ICU stay, gastric tube indwelling before BSI, more types of antibiotics use before BSI, lower Hb and Cholinesterase represent significant risk factors for the development of BSI-CRKP. Our nomogram predicated thrombocytopenia was a sign of poor prognosis, and tigecycline resulted in higher mortality for patients with BSI-KP. CRKP, ICU hospitalization, more types of antibiotics use before BSI, tigecycline use after BSI, PLT, urinary catheterization were associated with 30-day mortality in patients with BSI-KP. Careful attention may should be paid to the frequent replacement of the antibiotics before *Klebsiella pneumoniae* infection, which may be beneficial to reduce the occurrence of drug resistance and mortality in severe patients. For patients with BSI-CRKP, urinary catheterization was the independent risk factor for 30-day mortality, while ceftazidime/avibactam was an independent favorable prognostic factor. The nomogram established in this study showed good consistency and discrimination in evaluating the probability of BSI-CRKP and the prognosis of patients with BSI-KP. Rational use of nomograms may help clinicians make better clinical decisions when treating BSI-KP patients.

## Ethical Approval

This study was approved by the recommendations of the Ethics Committee of the First Affiliated Hospital, College of Medicine, Zhejiang University with written informed consent from all subjects (Reference Number:20210789). All subjects provided written informed consent in accordance with the Declaration of Helsinki.

## Funding

This study was funded by Youth Program of National Natural Science Foundation of China (No. 81803589).

## Disclosure

The authors report no conflicts of interest in this work.

## References

1. Wyres KL, Lam MMC, Holt KE. Population genomics of *Klebsiella pneumoniae*. *Nat Rev Microbiol*. 2020;18(6):344–359.
2. Diekema DJ, Pfaller MA, Jones RN, et al. Trends in antimicrobial susceptibility of bacterial pathogens isolated from patients with bloodstream infections in the USA, Canada and Latin America. SENTRY Participants Group. *Int J Antimicrob Agents*. 2000;13(4):257–271.
3. Diekema DJ, Hsueh PR, Mendes RE, et al. The Microbiology of Bloodstream Infection: 20-Year Trends from the SENTRY Antimicrobial Surveillance Program. *Antimicrob Agents Chemother*. 2019;63(7):e00355–19.
4. Pan H, Lou Y, Zeng L, et al. Infections Caused by Carbapenemase-producing *Klebsiella pneumoniae*: microbiological Characteristics and Risk Factors. *Microb Drug Resist*. 2019;25(2):287–296.
5. Shilo S, Assous MV, Lachish T, et al. Risk factors for bacteriuria with carbapenem-resistant *Klebsiella pneumoniae* and its impact on mortality: a case-control study. *Infection*. 2013;41(2):503–509.
6. Debby BD, Ganor O, Yasmin M, et al. Epidemiology of carbapenem resistant *Klebsiella pneumoniae* colonization in an intensive care unit. *Eur J Clin Microbiol Infect Dis*. 2012;31(8):1811–1817.
7. Clinical and Laboratory Standards Institute. Performance standards for antimicrobial susceptibility testing. M100, 30th Edition. Available from: <http://www.clsi.org/>. Accessed January 2020..
8. Food and Drug Administration. Antibacterial Susceptibility Test Interpretive Criteria. Available from: <https://www.fda.gov/drugs/development-resources/antibacterial-susceptibility-test-interpretive-criteria>. Accessed October 2021.
9. Serenari M, Han KH, Ravaioli F, et al. A nomogram based on liver stiffness predicts postoperative complications in patients with hepatocellular carcinoma. *J Hepatol*. 2020;73(4):855–862.
10. Xiao T, Yu W, Niu T, et al. A retrospective, comparative analysis of risk factors and outcomes in carbapenem-susceptible and carbapenem-nonsusceptible *Klebsiella pneumoniae* bloodstream infections: tigecycline significantly increases the mortality. *Infect Drug Resist*. 2018;11:595–606.
11. Orsi GB, García-Fernández A, Giordano A, et al. Risk factors and clinical significance of ertapenem-resistant *Klebsiella pneumoniae* in hospitalised patients. *J Hosp Infect*. 2011;78(1):54–58.
12. Patel G, Huprikar S, Factor S, et al. Outcomes of Carbapenem-Resistant *Klebsiella pneumoniae* Infection and the Impact of Antimicrobial and Adjunctive Therapies. *Infect Control Hospital Epidemiol*. 2008;29(12):1099–1106.
13. Thapa S, Min L, Hui X, et al. Acetylcholinesterase: a Primary Target for Drugs and Insecticides. *Mini Rev Med Chem*. 2017;17(17):1665–1676.

14. Zhang H, Guo Z, Chai Y, et al. Risk Factors for and Clinical Outcomes of Carbapenem-Resistant *Klebsiella pneumoniae* Nosocomial Infections: a Retrospective Study in a Tertiary Hospital in Beijing, China. *Infect Drug Resist.* 2021;14:1393–1401.
15. Wang Q, Zhang Y, Yao X, et al. Risk factors and clinical outcomes for carbapenem-resistant Enterobacteriaceae nosocomial infections. *Eur J Clin Microbiol Infect Dis.* 2016;35(10):1679–1689.
16. Cai Y, Wang R, Liang B, et al. Systematic review and meta-analysis of the effectiveness and safety of tigecycline for treatment of Infectious disease. *Antimicrob Agents Chemother.* 2011;55(3):1162–1172.
17. Food and Drug Administration. Drug safety announcement–tigecyclin. Available from: <http://www.fda.gov/Drugs/DrugSafety/ucm369580.htm>. Accessed September 2015.
18. Ni W, Han Y, Liu J, et al. Tigecycline Treatment for Carbapenem-Resistant Enterobacteriaceae Infections: a Systematic Review and Meta-Analysis. *Medicine.* 2016;95(11):e3126.
19. Wu Q, Ren J, Wang G, et al. The Incidence, Clinical Outcomes, and Risk Factors of Thrombocytopenia in Intra-Abdominal Infection Patients: a Retrospective Cohort Study. *PLoS One.* 2016;11(1):e0147482.
20. Wang Z, Ren J, Liu Q, et al. Hypermucoviscous *Klebsiella pneumoniae* infections induce platelet aggregation and apoptosis and inhibit maturation of megakaryocytes. *Thromb Res.* 2018;171:45–54.
21. Guo C, Yuan L, Wang JG, et al. Lipopolysaccharide (LPS) induces the apoptosis and inhibits osteoblast differentiation through JNK pathway in MC3T3-E1 cells. *Inflammation.* 2014;37(2):621–631.
22. Fan WJ, Li HP, Zhu HS, et al. NF- $\kappa$ B is involved in the LPS-mediated proliferation and apoptosis of MAC-T epithelial cells as part of the subacute ruminal acidosis response in cows. *Biotechnol Lett.* 2016;38(11):1839–1849.
23. Catani L, Fagioli ME, Tazzari PL, et al. Dendritic cells of immune thrombocytopenic purpura (ITP) show increased capacity to present apoptotic platelets to T lymphocytes. *Exp Hematol.* 2006;34(7):879–887.
24. Leytin V, Mykhaylov S, Starkey AF, et al. Intravenous immunoglobulin inhibits anti-glycoprotein IIb-induced platelet apoptosis in a murine model of immune thrombocytopenia. *Br J Haematol.* 2006;133(1):78–82.
25. Yuan Y, Wang J, Yao Z, et al. Risk Factors for Carbapenem-Resistant *Klebsiella pneumoniae* Bloodstream Infections and Outcomes. *Infect Drug Resist.* 2020;13:207–215.

## Infection and Drug Resistance

Dovepress

### Publish your work in this journal

Infection and Drug Resistance is an international, peer-reviewed open-access journal that focuses on the optimal treatment of infection (bacterial, fungal and viral) and the development and institution of preventive strategies to minimize the development and spread of resistance. The journal is specifically concerned with the epidemiology of antibiotic resistance and the mechanisms of resistance development and diffusion in both hospitals and the community. The manuscript management system is completely online and includes a very quick and fair peer-review system, which is all easy to use. Visit <http://www.dovepress.com/testimonials.php> to read real quotes from published authors.

Submit your manuscript here: <https://www.dovepress.com/infection-and-drug-resistance-journal>