

REVIEW

Open Access



# Targeting KRAS mutant cancers: from druggable therapy to drug resistance

Chunxiao Zhu<sup>1,2†</sup>, Xiaoqing Guan<sup>1,3†</sup>, Xinuo Zhang<sup>1,4†</sup>, Xin Luan<sup>5</sup>, Zhengbo Song<sup>1</sup>, Xiangdong Cheng<sup>1,3\*</sup>, Weidong Zhang<sup>5,6\*</sup> and Jiang-Jiang Qin<sup>1,2,3\*</sup>

## Abstract

Kirsten Rat Sarcoma Viral Oncogene Homolog (KRAS) is the most frequently mutated oncogene, occurring in a variety of tumor types. Targeting KRAS mutations with drugs is challenging because KRAS is considered undruggable due to the lack of classic drug binding sites. Over the past 40 years, great efforts have been made to explore routes for indirect targeting of KRAS mutant cancers, including KRAS expression, processing, upstream regulators, or downstream effectors. With the advent of KRAS (G12C) inhibitors, KRAS mutations are now druggable. Despite such inhibitors showing remarkable clinical responses, resistance to monotherapy of KRAS inhibitors is eventually developed. Significant progress has been made in understanding the mechanisms of drug resistance to KRAS-mutant inhibitors. Here we review the most recent advances in therapeutic approaches and resistance mechanisms targeting KRAS mutations and discuss opportunities for combination therapy.

**Keywords:** KRAS mutations, Druggable, Resistance, Combination therapy

## Introduction

Kirsten Rat Sarcoma Viral Oncogene Homolog (KRAS) mutations are genetic drivers in numerous cancer types including non-small cell lung cancer (NSCLC), colorectal cancer (CRC), and pancreatic ductal adenocarcinoma (PDAC) [1–5]. KRAS proteins primarily bind to guanosine diphosphate (GDP) and are in an inactive conformation maintained by intrinsic guanosine triphosphate (GTP) hydrolytic activity. KRAS interacts with GTPase activating protein (GAP) accelerating GTP

toward conversion of GDP [6–9], while guanine nucleotide exchange factor (GEF) binding with KRAS results in the KRAS passively loading with the GTP [8, 10, 11]. GTP binding to KRAS shifts the active site from an open to a closed conformation, allowing multiple downstream effector pathways to interact and activate, including the mitogen-activated protein kinase (MAPK) and phosphatidylinositol 3-kinase (PI3K) pathways [12, 13]. The activated state of KRAS accumulating in vivo results in the activation of downstream signaling pathways and is associated with tumorigenesis, aggressive disease, and poor prognosis [14, 15].

For more than 40 years, KRAS mutation has been considered “undruggable” [16, 17]. On the one hand, the affinity of KRAS and GTP is at the pM level, while the concentration of GTP in cells is up to 0.5 μM. It is difficult to achieve effective competition like protein kinase inhibitors [18, 19]. On the other hand, the KRAS proteins are featureless. They have a nearly spherical structure that lacks a deep hydrophobic pocket and has no obvious binding site [20]. Currently, Food and Drug

<sup>†</sup>Chunxiao Zhu, Xiaoqing Guan and Xinuo Zhang have contributed equally to this work and share the first authorship.

\*Correspondence: chengxd@zjcc.org.cn; wdzhangy@hotmail.com; jqin@ucas.ac.cn

<sup>1</sup>The Cancer Hospital of the University of Chinese Academy of Sciences (Zhejiang Cancer Hospital), Institute of Basic Medicine and Cancer (IBMC), Chinese Academy of Sciences, Hangzhou 310022, China

<sup>5</sup>Institute of Interdisciplinary Integrative Medicine Research and Shuguang Hospital, Shanghai University of Traditional Chinese Medicine, Shanghai 201203, China

Full list of author information is available at the end of the article



Administration (FDA) has approved an allele-specific covalent inhibitor of KRAS (G12C), AMG510 (sotorasib) having marked clinical responses across multiple tumor types [21–24]. In addition, a selective non-covalent inhibitor of KRAS (G12D), MRTX1133, also provides a novel targeting therapy [6, 22, 25]. In this new era of targeting KRAS mutations, the next challenge will be to understand and overcome the mechanisms of drug resistance.

In this review, we delineate the recent therapeutic strategies for KRAS mutant cancers and discuss the resistance mechanisms of KRAS mutant therapy and the possible approaches to combat them.

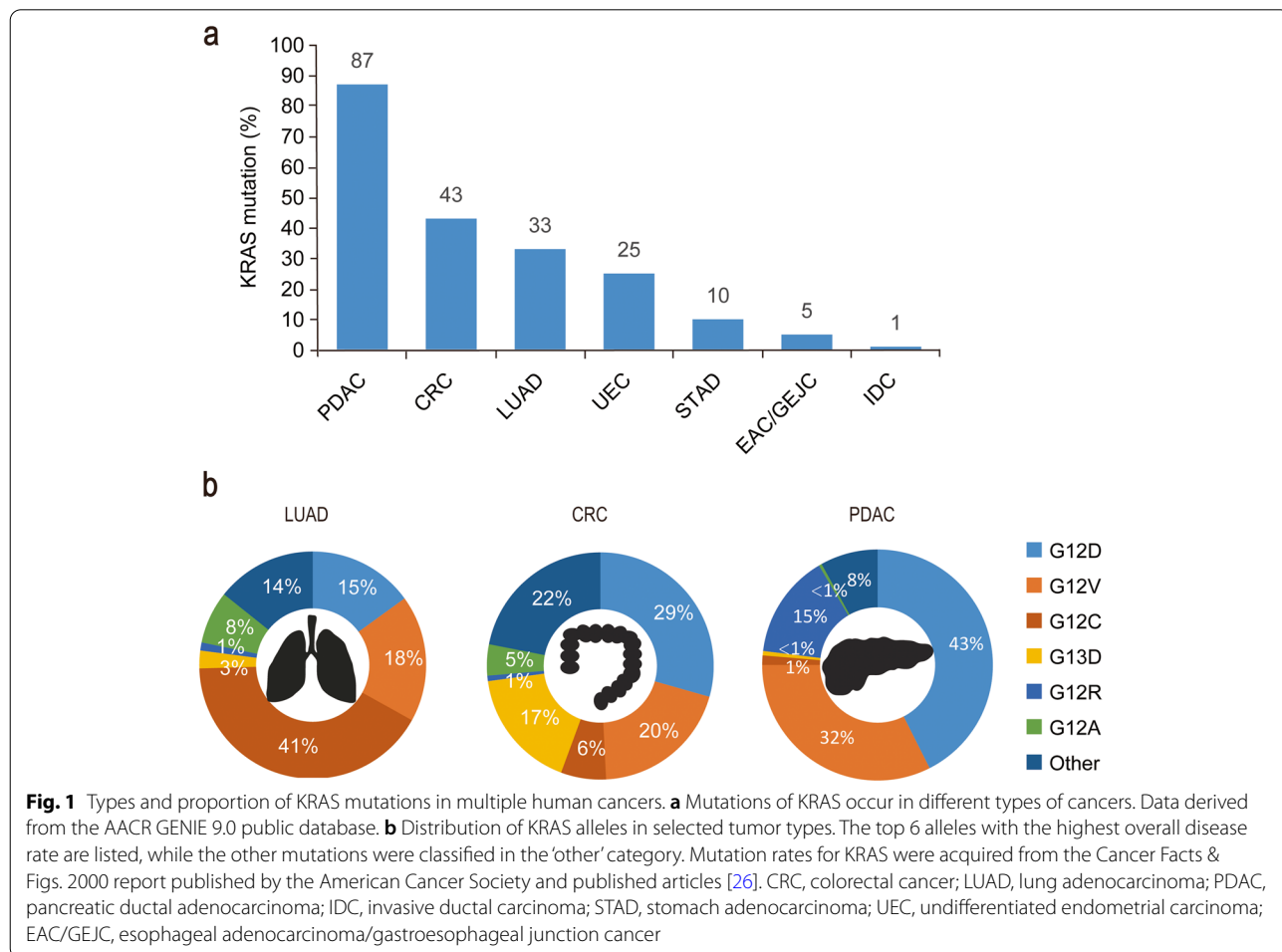
**KRAS mutation-driven cancers**

KRAS mutations are common in a variety of cancers, for example, 45% of CRC cases in the United States and 49% of CRC cases in China; ~90% of pancreatic ductal adenocarcinoma (PDAC) in the United States, and ~89% in China; and 35% of lung adenocarcinomas (LUAD, a subtype of non-small-cell lung cancer) in the United States, and ~13% in China (Fig. 1 for US data) [26]. KRAS has

two isomers, KRAS4A and KRAS4B, that are generated by selective splicing of the KRAS gene. The mutant subtypes of KRAS are mainly classified as KRAS (G12D), KRAS (G12V), KRAS (G12C), KRAS (G13D), KRAS (G12R), and KRAS (G12A) mutations or KRAS wild-type amplification. Genetic alteration of G12 or G13 destroys the stability of the arginine residue hydrolysis transition state [7]. The distribution of KRAS mutations varies in different human cancers, with KRAS (G12C) mutation in 41% of LUAD, whereas KRAS (G12D) and KRAS (G12V) are the two most common alleles in CRC and PDAC, as shown in Fig. 1. Notably, other KRAS alleles such as G12R are limited in PDAC [26]. Indeed, although the tumor type is driven by KRAS mutations, its codons and the frequency of mutations vary by tissue type.

**KRAS biology: functions and signaling pathways**

KRAS signaling provides a competitive advantage to cancer cells by participating in central carbon metabolism, increasing glucose uptake and glycolysis to increase the nutrients flux while promoting multiple branching



biosynthetic pathways. It also regulates the total mitochondrial content and function by inducing phagocytosis, and the damaged mitochondrial delays tumor progression. KRAS also promotes alternative glutamine catabolism, leading to an increase in the production of nicotinamide adenine dinucleotide phosphate (NADPH) [27]. KRAS regulates pinocytosis to deal with the limited availability of mitochondrial substrates which can lead to dangerous levels of reactive oxygen species (ROS) and depleted nucleotide pools when cultured in buffered brine lacking essential nutrients. Autophagy flux provides KRAS-driven cancer cells with glutamine and glutamate to promote TCA cycling and support nucleotide production [28, 29].

Much more studies have revealed that KRAS is regarded as a switch for GDP-GTP regulation thus regulating the cytoplasmic signaling network and control various normal cellular processes. There are two splice variants of KRAS, KRAS4A and KRAS4B. In general, KRAS4B has higher expression levels. KRAS4A and KRAS4B are required for the initiation of tumor and may also have specific functions in tumor microenvironment. For example, KRAS4A expression increases tumor cell adaptation to stress, such as hypoxia. On the other hand, KRAS4B is expressed in both stem and progenitor cells. Recent studies have revisited the role of KRAS4A and KRAS4B in tumorigenesis [10, 30, 31].

As mentioned above, KRAS is a small guanosine triphosphatase (GTPase) that acts as a switch in the molecules of various cellular processes by coupling membrane growth factor receptors with intracellular signaling pathways and transcription factors. Combined with GTP, KRAS is activated, whereas KRAS is in the “off” state when binding to GDP [32]. KRAS activation is regulated by different negative and positive regulators. Negative regulators include GTPase-activating proteins (RAS-GAP), which enhances the inherent activity of KRAS-GTPase and leads to rapid hydrolysis of binding GTP [33]. Similarly, guanine nucleotide exchange factors (RAS-GEFs) are positive regulators that stimulate the release of bound GDP and exchange of GTP, resulting in the production of active KRAS-GTP complexes in response to upstream stimuli. The three main RAS-GEF families are SOS, RAS-GRF, and RAS-GRP. The SOS proteins are involved in downstream signaling transduction of receptor tyrosine kinases (RTKs), and the RAS-GRF protein is involved in Ca<sup>2+</sup> influx/calmodulin-dependent activation of RAS and is mainly expressed in the central nervous system. The RAS-GRP activates RAS proteins downstream of non-receptor tyrosine kinases that are mainly expressed in hematopoietic cells [34].

Upstream signaling pathways of KRAS mainly include cell surface receptors, such as epidermal growth factor

receptor (EGFR (ERBB1)), human epithelial growth factor receptor 2 (HER2 (ERBB2)), HER3 (ERBB3), and ERBB4. They transmit signals through KRAS after receiving external signals. This process stimulates cell proliferation and migration [35, 36].

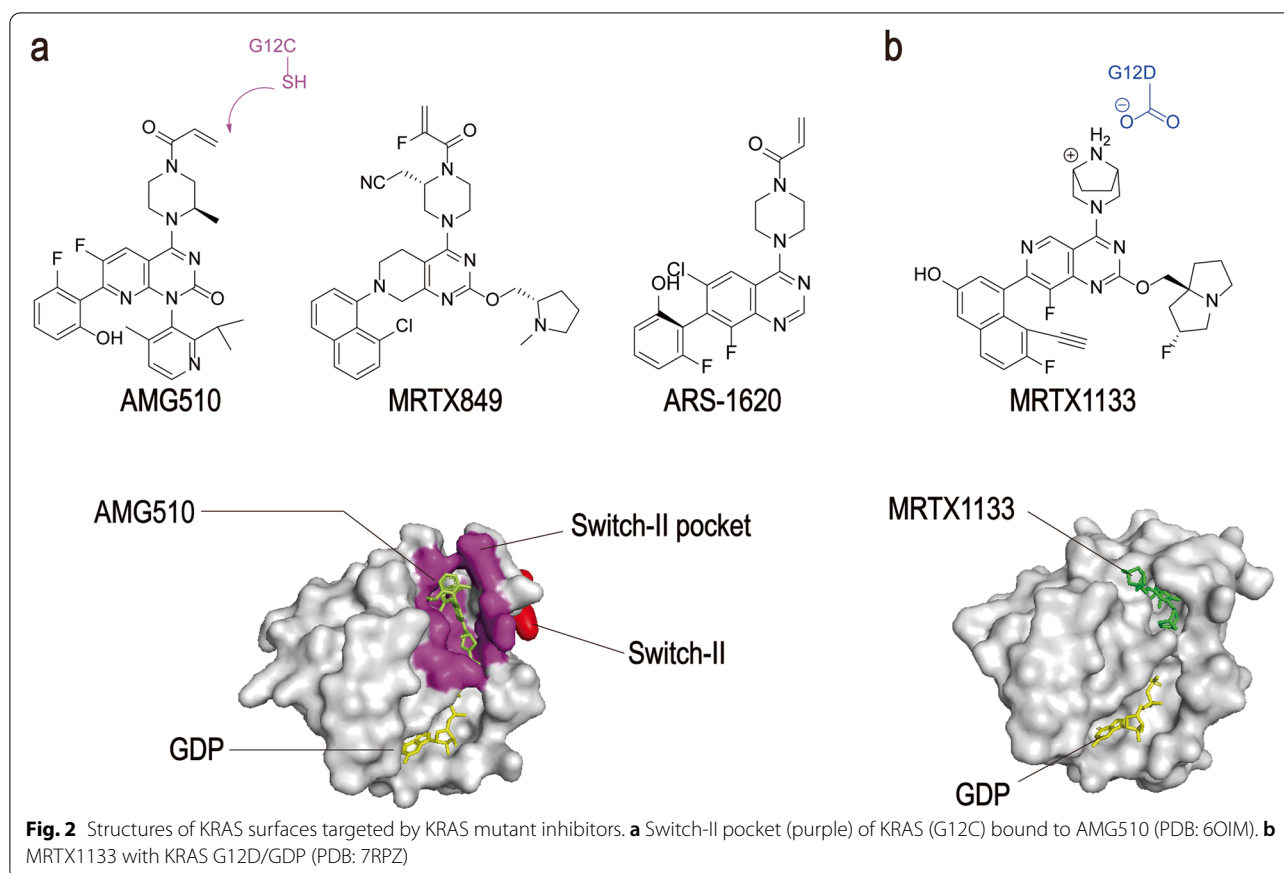
Downstream signaling pathways mediated by KRAS mainly include rapidly accelerated fibrosarcoma (RAF) - mitogen-activated protein kinase kinase (MEK) -extra-cellular regulated protein kinases (ERK) and PI3K-serine/threonine-protein kinase (AKT) - mammalian target of rapamycin (mTOR) pathways. In the RAF-MEK-ERK pathway, activated KRAS-GTP rapidly increases the number of serine/threonine-specific protein kinase (RAF) from the cytoplasm to the plasma membrane, and then changes its conformation to activate it. The c-terminal catalytic domain of RAF binds to MEK1/2 and then activates ERK1/2 by phosphorylation to regulate cell proliferation, differentiation, and migration [37]. In the PI3K-AKT-mTOR pathway, KRAS-GTP binds to the p110s site of PI3K, which activates PI3K and promotes the conversion of phosphatidylinositol 4, 5-diphosphate (PIP2) to phosphatidylinositol 3,4,5-triphosphate (PIP3). PIP3 promotes AKT phosphorylation by phosphoinositide-dependent kinase 1 (PDK1) and activates mTOR, thus affecting cell proliferation, protein synthesis, survival, metabolism, transcription, and other life activities [38, 39]. In short, mutations in KRAS disrupt the guanine exchange cycle, resulting in KRAS “locking” in the active GTP-binding state, thereby activating downstream signaling pathways.

### Therapeutics for KRAS mutant cancers

#### *Inhibitors directly targeting KRAS*

The KRAS mutant proteins that drive cancer development are highly similar in sequence and structure based on the structural, mutational, and biochemical data of Harvey-RAS (HRAS). Direct inhibitors are most likely to bind to the catalytic domain of KRAS [40]. Research on direct inhibition of KRAS mutations date back to the discovery of RAS-activated mutations in human cancer cells in the 1980s when RAS-activated mutations were found in human cancer cells. However, some studies have found that KRAS mutants can be targeted by heterogeneous sites, to develop covalent inhibitors of KRAS mutants. The discovery of inhibitors that selectively target KRAS (G12C) while preserving the wild-type or other mutant KRAS is a breakthrough in the research field [20, 24].

AMG510 is a first-in-class small molecule inhibitor of KRAS (G12C) that specifically and irreversibly locks KRAS in an inactive GDP binding state, as shown in Fig. 2 [41]. It was found that the potential inhibitor of KRAS (G12C) with pocket binding histidine-residues can be flipped upward to reveal hidden grooves produced



by another orientation of His95. In contrast to the ARS-1620, the first confirmed direct inhibitor of KRAS (G12C), which occupies a smaller pouch and is less potent, AMG510 enhances its binding to KRAS (G12C) through the His95 groove with an approximately 10-fold increase in potency [42] (Table 1).

MRTX849 (adagrasib) developed by Mirati Therapeutics, has been identified as a highly selective covalent inhibitor of KRAS (G12C) and is currently in phase I/II clinical studies [44, 45]. It is an oral, small-molecule selective inhibitor of KRAS (G12C) mutation. It can not only inhibit KRAS mutation almost completely *in vivo* but also show good drug-like properties. MRTX849 selectively targets the mutant cysteine 12 of KRAS in GDP, which is present in the induction-switch II pocket of KRAS (G12C), thereby locking it into an inactive GDP-binding state and inhibiting the RAS/MAP kinase pathway. In KRAS (G12C) positive cell lines and patient-derived xenograft models from multiple tumor types, 65% of the models showed significant tumor regression (Table 1) [60].

MRTX1133 was identified as a potent, selective, non-covalent inhibitor of KRAS (G12D) with picomolar binding affinity. Asp12 of KRAS (G12D) has a carboxyl group

that is weaker nucleophilic than the sulfhydryl group of cysteine. This difference results in compounds, such as MRTX849, with significant effects on KRAS (G12C), but not on KRAS (G12D). Based on the structure of MRTX849, the electrophilic receptor, acrylamide, was replaced with piperazine to form intermolecular ion-pair force. MRTX1133 binds to the switch-II pocket and inhibits the protein–protein interactions necessary for the activation of the downstream pathway of KRAS [25] (Table 1).

#### Targeted regulation of KRAS active protein

The signal transduction process of KRAS activation and inactivation is catalyzed by various factors and enzymes. The KRAS activity can be indirectly reduced by inhibiting the function of factors or enzyme activity, which achieves the purpose of inhibiting pathway activation. Son of sevenless 1 (SOS1) and SH2-containing protein tyrosine phosphatase (SHP2) are the two most critical targets in the RAS signaling pathway [61, 62].

*Molecules interrupting KRAS cell membrane localization or dimerization* It was observed that RAS is active when localized to the cell membrane. In this

**Table 1** Summary of KRAS mutation cancers therapeutics

Biomarker	Name	In vitro efficacy		In vivo efficacy			Ref.
		Tissue-Cell Line	IC <sub>50</sub> (nM)	Dose (mg/kg)	Animal model	Inhibition% or Regression% <sup>a</sup> (Day)	
<b>Act to directly inhibit KRAS</b>							
KRAS-G12C	ARS-1620	Lung-H358 (KRAS-G12C)	100	400	Pancreas-MIA-PaCa2 (KRAS-G12C)	-52 (18)	[21]
		Pancreas-MIA PaCa-2 (KRAS-G12C)	200	400	Lung-H358 (KRAS-G12C)	-33 (27)	[21]
	MRTX849	Lung-H2030 (KRAS-G12C)	0.2	100	Colorectal-CR6243 (KRAS-G12C)	-35 (20)	[43]
		Lung-H358 (KRAS-G12C)	2.5	100	Lung-Calu-1 (KRAS-G12C)	-81 (22)	[43]
		Pancreas-MIA PaCa-2 (KRAS-G12C)	29.6	100	Pancreas-MIA PaCa-2 (KRAS-G12C)	-100 (19)	[43]
		Lung-SW1573 (KRAS-G12C)	15.7	100	Lung-LU65 (KRAS-G12C)	-97 (13)	[43]
	AMG510	Lung-H1792 (KRAS-G12C)	8.6	100	Lung-H1373 (KRAS-G12C)	-95 (22)	[43]
		Pancreas-MIA PaCa-2 (KRAS-G12C)	1	100	Pancreas-MIA PaCa-2 (KRAS-G12C)	-56 (24)	[38]
		Lung-H1373 (KRAS-G12C)	5	100	CRC-PDX (KRAS-G12C)	-69 (41)	[38]
		Lung-H2122 (KRAS-G12C)	9	100	CRC-CT-26 (KRAS-G12C)	-59 (29)	[38]
KRAS-G12D	MRTX1133	Lung-H358 (KRAS-G12C)	3	100	Lung-H358 (KRAS-G12C)	-50 (24)	[38]
		Stomach-AGS (KRAS-G12D)	6	30	Panc 04.03 (KRAS-G12D)	-70 (26)	[25]
<b>Targeted regulation of KRAS active protein</b>							
SOS1	BAY-293	Lung-H23 (KRAS-G12D)	734	–	–	–	[40]
		Colon-DLD1 (KRAS-G13D)	640	–	–	–	[40]
	BI-3406	Lung-H23 (KRAS-G12D)	9	50	Pancreas-MIA PaCa-2 (KRAS-G12C)	86 (22)	[41]
Lung-H358 (KRAS-G12C)		24	50	CRC-LoVo (KRAS-G13D)	62 (23)	[41]	
Colon-DLD1 (KRAS-G13D)		24	50	CRC-B8032 (KRAS-G12C)	27 (22)	[41]	
SHP2	SHP099	Lung-H23 (KRAS-G12D)	592	100	Oesophagus-KYSE520	98 (14)	[44]
		Lung-H358 (KRAS-G12C)	360	–	–	–	[44]
	TNO155	Lung-H3255 (EGFR-L858R)	120	7.5	Lung-H2030 (KRAS-G12C)	43 (14)	[45]
Lung-HCC827 (EGFR-ex19del)		700	7.5	Esophageal cancer-KYSE410 (KRAS-G12C)	87 (14)	[45]	
<b>Inhibitors of KRAS upstream signaling pathway</b>							
EGFR	AZD9291	Lung-H1975 (EGFR-L858R)	25	10	Lung-PC-9 (EGFR-ex19del)	-60 (14)	[46, 47]
		Lung-HCC827 (EGFR-ex19del)	> 250	10	Lung-H1975 (EGFR-L858R/T790M)	-68 (14)	[46, 47]
	JBJ-04-125-02	B cell-Ba/F3 (EGFR-L858R)	1000	100	Lung-H1975 (EGFR-L858R/T790M)	-70 (35)	[48]
<b>Inhibitors of KRAS downstream signaling pathway</b>							
MEK1/2	GSK112021	Pancreas-BXPC-3 (P53-mutant)	10	0.3	PDX-738	-20 (14)	[49]
ERK1/2	BVD-523	Pancreas-MIA PaCa-2 (KRAS-G12C)	500	100	CRC-Colo205 (BRAF-V600E)	-100 (14)	[50]
		Chromoma-A375 (BRAF-V600E)	500	100	Chromoma-A375 (BRAF-V600E)	-100 (18)	[50]
BRAF	BGB283	Chromoma-A375 (BRAF-V600E)	64	5	Colon-HT29 (BRAF-V600E)	75 (22)	[51]
		Colon-HT29 (BRAF-V600E)	50	10	Colon-Colo205 (BRAF-V600E)	> 100 (15)	[51]
p110α	BYL719	Medulloblastoma-DAOY (PIK3R1-mutant)	5650	25	Breast-MCF7 (PIK3CA-mutant)	-10 (21)	[52, 53]
AKT	MK2206	Liver-Huh7	3100	100	Pancreas-BT-474 (HER2-amplified)	70 (28)	[54]

**Table 1** (continued)

Biomarker	Name	In vitro efficacy		In vivo efficacy			Ref.
		Tissue-Cell Line	IC <sub>50</sub> (nM)	Dose (mg/kg)	Animal model	Inhibition% or Regression% <sup>a</sup> (Day)	
mTOR	RAD001	Lymph-U937	20	–	–	–	[55]
	OSI-027	T cell-Jurkat	300	65	CRC-GEO	100 (12)	[56, 57]
<b>Degradation agent of KRAS</b>							
KRAS-G12C	LC-2	Lung-SW1573 (KRAS-G12C)	760	–	–	–	[58]
		Lung-H23 (KRAS-G12C)	250	–	–	–	[58]
<b>Small interfering RNA therapies</b>							
KRAS mRNA	AZD4785	Epidermal carcinoma-A431	10	50	Lung-NCI-H358	55 (28)	[59]

<sup>a</sup> 1) Tumor growth inhibition was calculated when the mean final treated tumor volume was larger than the initial treated tumor volume using the following formula  
Tumor growth inhibition = 100% \* ((Final vehicle tumor volume) – (Final treated tumor volume)) / ((Final vehicle tumor volume) – (Initial vehicle tumor volume))

2) Tumor regression was calculated when the mean tumor volume of the final treated tumor was smaller than the initial treated tumor volume using the following formula

Tumor regression = (–100%) \* (1 – ((Final treated tumor volume) / (Initial treated tumor volume)))

case, RAS requires three enzymes including isoprenylcysteine carboxyl methyltransferase (ICMT). Cys-methynil, a small molecule inhibitor of ICMT, disrupts RAS membrane binding and reduces cell growth in RAS mutant cell lines [46–48]. In addition, a small molecule, Cmpd2, which interferes with the binding of the RAS and lipid membranes, promotes membrane occlusion, and reduces binding to the RBD domain of RAF. What's more, the RAS family members are oligomerized or dimerized for efficient RAS-driven signaling. Without interfering with RAS localization and GTPase activity, NS1 disrupts the self-binding of HRAS and KRAS by directly binding to the  $\alpha 4$ – $\alpha 5$  interface, reducing the activation of downstream pathways and inhibiting cell proliferation [30, 63, 64].

**SOS1 inhibitors** In the RAS-GEF family, SOS protein is widely expressed and participates in downstream signaling transduction of RTKs. The human SOS family contains two different genes, SOS1 and SOS2, that are located on different chromosomes [65]. Hillig et al. found an effective and cell-active small molecule inhibitor, Bay-293, which is developed by Bayer and is currently in pre-clinical studies [61]. Bay-293 can effectively disrupt the interaction between KRAS and its exchange factor SOS1. It interrupts the reloading of KRAS and GTP by blocking the formation of the KRAS-SOS1 complex, leading to anti-proliferative activity [61]. The results showed that Bay-293 inhibited RAS activity in Hela cells and had high anti-proliferative activity against wild-type cell lines K562 and MOLM-13 and KRAS (G12C) mutant cell lines NCL-H358 and CALU-1 [61].

Hofmann et al. reported the discovery of a highly efficient, selective, and orally bioavailable small molecule SOS1 inhibitor BI-3406, which binds to the catalytic domain of SOS1 and thus prevents its interaction with KRAS [66]. BI-3406 reduces GTP-RAS formation, thereby limiting cell proliferation in a variety of KRAS-driven cancers. Most importantly, BI-3406 also attenuates MEK-in feedback reactivation, thereby enhancing the sensitivity of KRAS-mutant cancers to MEK inhibition [66].

**SHP2 inhibitors** SHP2 is the first protein tyrosine phosphatase discovered to promote the development of cancer, which is closely associated with the occurrence of breast cancer and lung cancer. SHP2, as an oncogene, is located at the downstream common node of RTKs and mediates the activation of RAS-ERK signaling pathway, thereby promoting the proliferation of cancer cells. Currently, there are four SHP2 inhibitors in clinical trials: Jabi-3068, TNO155, RC-4630, and RLY 1971. These inhibitors bind to a region outside the PTP catalytic pocket and show great selectivity against other members of the phosphatase family [67].

Chen et al. reported an efficient, selective, and orally bioavailable small molecule SHP2 inhibitor, SHP099, which controls SHP2 in the self-inhibitory structure. SHP099 binds to the interface of N-terminal SH2, C-terminal SH2, and protein tyrosine phosphatase domains simultaneously, thereby inhibiting SHP2 activity through an allosteric mechanism. SHP099 inhibits the MAPK signaling pathway that results in inhibiting tyrosine kinase

receptor-driven proliferation of human cancer cells in vitro and a mouse tumor transplant model in vivo [68].

The SHP2 inhibitor developed by Novartis, TNO155, inhibits MAPK signaling and enhances the efficacy of KRAS (G12C) inhibitors against KRAS (G12C) lung and colorectal cancers. The tumor microenvironment can be affected by blocking immunosuppressive signals RTKs and MAPK signals, thus reducing the overexpression of SHP2 and slowing down tumor growth [49].

#### ***Inhibitors of KRAS upstream signaling pathway***

EGFR as an RTK plays a vital role in cell proliferation and migration. Most of the signaling transduction of EGFR is thought to occur in the plasma membrane, stimulating the activation and signaling transduction of MAPK and PI3K. Ligand-mediated EGFR activation is through conformational changes in the extracellular domain of the receptor following ligand binding, leading to receptor dimerization and the formation of kinase domains that internalize asymmetric dimers, while EGFR without ligand can also internalize, but at a relatively slow rate. Two classes of EGFR-targeting compounds, monoclonal antibody (mAb) like cetuximab, and tyrosine kinase inhibitor (TKIs) like gefitinib targeting the extracellular and intracellular domains of EGFR, have shown antitumor activities [69].

Gefitinib, reported by Mohamed Muhsin, is a first-generation small molecule EGFR inhibitor that binds to the intracellular tyrosine kinase domain of EGFR, thereby inhibiting autophosphorylation of receptor and then isolating the downstream signaling transmission [58]. Afatinib has clinical activity as a second-generation inhibitor against major uncommon and complex EGFR mutations in NSCLC [70].

AZD9291, reported by Cross et al., is a novel oral, potent, and selective third-generation irreversible inhibitor that inhibits EGFR (T790M) resistant mutation without affecting wild-type EGFR [71]. The Janne's clinical trial of AZD9291 involved 253 patients. In 31 patients enrolled in the dose-escalation cohort, no dose-limiting toxic effects happened under the assessed dose [72]. An additional 222 patients were treated in five extended cohorts. The overall objective tumor response rate was 51%, indicating that AZD9291 was highly effective in patients with EGFR (T790M) mutant lung cancer whose disease had progressed during previous treatment with EGFR tyrosine kinase inhibitors [71, 72]. JBJ-04-125-02, as an EGFR-mutant allosteric inhibitor, inhibits EGFR (L858R/T790M/C797S) pathway and cell proliferation. However, increased dimeric EGFR reduces the efficacy, leading to drug resistance [73].

#### ***Inhibitors of KRAS downstream signaling pathways***

***RAF-MEK-ERK*** Except downstream of post-translational KRAS and membrane-binding processes, other key targets are KRAS protein mutation-activated signaling pathways. One of these pathways is the RAF-MEK-ERK pathway, and several MEK inhibitors have been developed [74]. For example, trametinib (GSK112021) is a selective allo structural oral inhibitor that inhibits MEK1/2 activation and kinase activity. Selumetinib, another oral MEK1/2 inhibitor, had no significant effect on survival compared to capecitabine in gemcitabine refractory PDAC patients. Lifafenib (BGB283) is a novel experimental inhibitor of RAF dimer with effective and reversible inhibition of the wild-type A-RAF, B-RAF, C-RAF, B-RAF<sup>V600E</sup> as well as EGFR and KRAS. A dose-escalation/dose-expansion study in humans by Desai et al. evaluated the role of sorafenib in solid tumors with B-RAF and KRAS mutations. Antitumor activity was shown in KRAS-mutated NSCLC (response rate 16.7%) and endometrial/ovarian cancer (DCR 100%) [75].

Diamond et al. validated Cobimetinib, an oral inhibitor of MEK1 and MEK2 in a clinical trial. Among the 18 patients treated, the overall response rate was 89% and there was no acquired drug resistance. After 1 year, 94% of patients maintained the characteristics of progression-free tumors, demonstrating the efficacy of Cobimetinib in treating tumors by acting on the MAPK pathway [68].

Smetinib, another oral inhibitor of MEK1/2 developed by AstraZeneca, reduced the size of plexus neurofibroma (PNF) by at least 20% from baseline in 71% patients in the Phase 2 trial (SPRINT). In a Phase 2 trial with low-grade glioma (LGG), partial remission of PNF was found in 40% of patients and 2-year progression-free survival achieved in 96% of patients. In gemcitabine refractory PDAC patients, Selumetinib had no significant effect on survival compared with Cobimetinib [76, 77].

Ulitinib (BFD – 523) is an ERK1/2 kinase inhibitor with strong preclinical activity in cell lines with BRAF and RAS mutations. In phase I clinical trials, it has an acceptable safety profile and good pharmacokinetics, and is active against solid tumors with NRAS and BRAFV600 and non-V600 mutated cancers [78].

***PI3K-AKT-mTOR*** Another effector, PI3K, is also activated by KRAS. Unlike p110 $\gamma$  and p110 $\delta$ , p110 $\alpha$  is widely expressed and exclusively activated by RAS. As isoform-specific p110 inhibitors should target malignant cells more specifically, they are expected to have fewer off-target effects. Apelalisib (BYL719) is a p110 $\alpha$ -specific

inhibitor tested in a phase I trial including patients with PIK3CA-altered advanced solid tumors [10, 79].

MK2206, an AKT inhibitor, was found to improve the pathological complete remission (CR) rate in patients with breast cancer associated with positive hormone receptors [80]. Uprosertib (GSK795) is an ATP-competitive AKT inhibitor, which is evaluated in a phase I study involving patients with various advanced-stage solid tumors. The most frequent grade 3 or 4 drug-related adverse events were hyperglycemia (11%) and rash (3%), and partial remission (PR) was reported in one patient with anal cancer shown in preliminary safety and efficacy data [80].

Everolimus (RAD001), an allosteric mTOR inhibitor is another derivative of rapamycin approved by the FDA for the treatment of numerous cancers, such as advanced-stage renal cell carcinoma (RCC). In the phase III RECORD1 trial, everolimus was associated with prolonged progression-free survival (PFS) in patients with advanced-stage RCC [80]. OSI-027 targeting mTORC1/2 has been tested in a dose-expansion study involving 128 patients. The daily schedule uncovered 17% of patients experiencing grade 3 or 4 adverse events and six patients had stable disease for more than 6 months [81].

#### **Degradation agents for KRAS mutant cancers**

Xu et al. characterized a novel, selective AKT inhibitor MS21. MS21 degrades AKT to inhibit cell growth and maintain low signal transduction in PI3K-PTEN mutated cells. MS21 suppresses tumor growth in mice by depleting phosphorylated AKT (p-AKT) and the newly discovered AKT substrate AURKB in cells [82]. Bond et al. reported the first degrading agent LC-2 which is capable of degrading endogenous KRAS (G12C) [83]. It covalently binds to KRAS (G12C) and recruits E3 ligase VHL to rapidly induce KRAS (G12C) degradation and inhibits MAPK signaling in KRAS (G12C) mutated cancer cell lines. However, the safety evaluation system, pharmacodynamic studies, and dose selection of the proteolysis-targeting chimeras (PROTACs) technique need to be improved. The covalent nature of LC-2 may limit its potency because it fails to participate in catalytic rounds degradation, thus affecting the potency of LC-2 on cell viability [83] (Table 1).

#### **KRAS mutant cancer vaccines**

Vaccines may help body build an immune response to kill tumor cells and delay relapse. Vaccination allows the KRAS-mutant tumor antigen to cause T cell responses, which has become a promising treatment. Both the T cell

pools of healthy individuals and cancer patients contain T cells that can identify KRAS mutation. After vaccination those T cells can be selectively expanded in tumor patients. Dendritic cells (DCs), one of the APCs, are specifically used to induce primary T-cell responses, and hence to induce antitumor immunity in vivo [84–86]. Purified peptide epitopes in combination with granulocyte-macrophage colony-stimulating factor (GM-CSF) induce efficient T-cell responses against peptide antigens in multiple cancers, including melanoma, breast cancer, and ovarian carcinomas [87, 88]. The cytokine GM-CSF promotes the maturation and activation of DCs, which can transfer to adjacent lymph nodes and activate effector T cells after antigen uptake [89]. In a phase I/II study, Gjertsen et al. have evaluated the immunogenicity and safety of KRAS peptide vaccine in 17 tumors with KRAS mutations. Two of the five patients with pancreatic cancer showed proliferative T cell responses, with a longer median survival of 10.5 months [90].

A second approach is an mRNA encoding a novel epitope of the KRAS mutation. Epitope discovery is an essential step in designing immunotherapies such as cancer vaccines. The conservative mutation profile of KRAS provides a valuable opportunity to develop neo-antigen-targeted therapies. Clinical studies have shown effective CD4<sup>+</sup> and CD8<sup>+</sup> T cell responses to KRAS mutation tumors. Adham et al. validated the KRAS G12 mutation peptide as a bona fide epitope promoting the development of immunotherapy directed against this oncoprotein [91]. Chaft et al. revealed a clinical benefit in a patient with KRAS (G12D) metastatic CRC following the adoptive transfer of KRAS (G12D)-specific T cells restricted to HLA-C\*08:02 [92]. With an intramuscular injection of an mRNA-containing vaccine, this mRNA nanoparticle is taken up by the antigen-presenting cells and translated to the cell surface, which results in the response of T cells [10].

#### **Small interfering RNA therapies**

Previous studies have shown that antisense oligonucleotides (ASO) are an attractive treatment for KRAS-driven human cancers, and therefore deserve further development. For example, Ross et al. demonstrated that delivery of nanoparticles containing small interfering RNA targeting KRAS mutations is an effective method. A chemically modified ASO, AZD4785, selectively and efficiently reduces the mRNA of KRAS in cells, thereby inhibiting the downstream effector pathways and exerting antiproliferative effects in KRAS mutant cells [59].

The LODERTM (Local Drug EluteR) developed by Silenseed Ltd., is a novel solution to the major challenges of addressing many diseases, including solid tumors. However, limitations include the delivery of RNAi-based



drugs and prolonged activity at tolerated doses. siG12D-LODERTM aims to provide a local drug with prolonged activity within the tumor while ensuring that the siRNA drug is protected from degradation. It has shown its potential in phase I trial of combined chemotherapy in 12 patients with PDAC [93].

In this section, we describe recent advances in the development of therapies targeting KRAS mutation cancers, including directly targeting KRAS itself and RAS effector pathways, namely MAPK and PI3K. What's more, we also expound emerging therapeutic strategies for treating KRAS-mutant tumors.

### **Mechanisms of resistance to KRAS-mutant targeting therapy and combination therapy**

#### ***Resistance mechanism of KRAS alterations and amplification***

Mutations that disrupt covalent or potentially non-covalent drug binding can be used to illustrate clinical resistance to KRAS (G12C) inhibition. KRAS (R68S) and KRAS (Y96C) mutations are within the switch II pocket of the MRTX849 and AMG510 binding site. These mutations may disrupt drug non-covalent binding interactions. Awad et al. generated Ba/F3 cell lines with G12C/R68S, G12C/H95D, G12C/H95Q, G12C/H95R and G12C/Y96C double-mutant alleles and observed a marked resistance to MRTX849 in these cell lines [94, 95]. Recently, a novel KRAS (Y96D) mutation was found, which affects the switch-II pocket and reduces the H-bonding between the Y96 residue of KRAS and MRTX849. Thereby, KRAS (Y96D) conferred resistance to KRAS (G12C) inhibitors in patient-derived KRAS (G12C) xenografts [96]. RM-018, a neoteric KRAS (G12C) active state inhibitor, retains the ability to inhibit KRAS (G12C/Y96D) and may address the problem of drug resistance [96]. KRAS mutations, including G13D, A59S, K117N, and A146P, that are outside the drug-binding pocket and correlated with enhanced nucleotide exchange, are associated with milder drug resistance than G12R and Y96C mutations. These mutations may increase the portion of the active KRAS in a GTP-bound state that does not bind the drugs [94] (Fig. 3).

Awad et al. also observed some patients with high-level focal amplifications of the KRAS (G12C) allele [94]. Xue et al. found the increased new KRAS (G12C) protein in KRAS (G12C)-mutant tumor cells and elucidate that EGFR can promote the conversion of KRAS from the GDP state to the GTP-bound state (activated state) and AURKA can maintain its active state by binding to KRAS [7]. Since KRAS (G12C) inhibitors only bind to KRAS-GDP conformation, drug resistance may occur in cells with increasing GTP-bound KRAS [7]. Recently, novel molecules binding to the GTP-bound state of KRAS were discovered [11]. RM-007 and RM-008 covalently bind

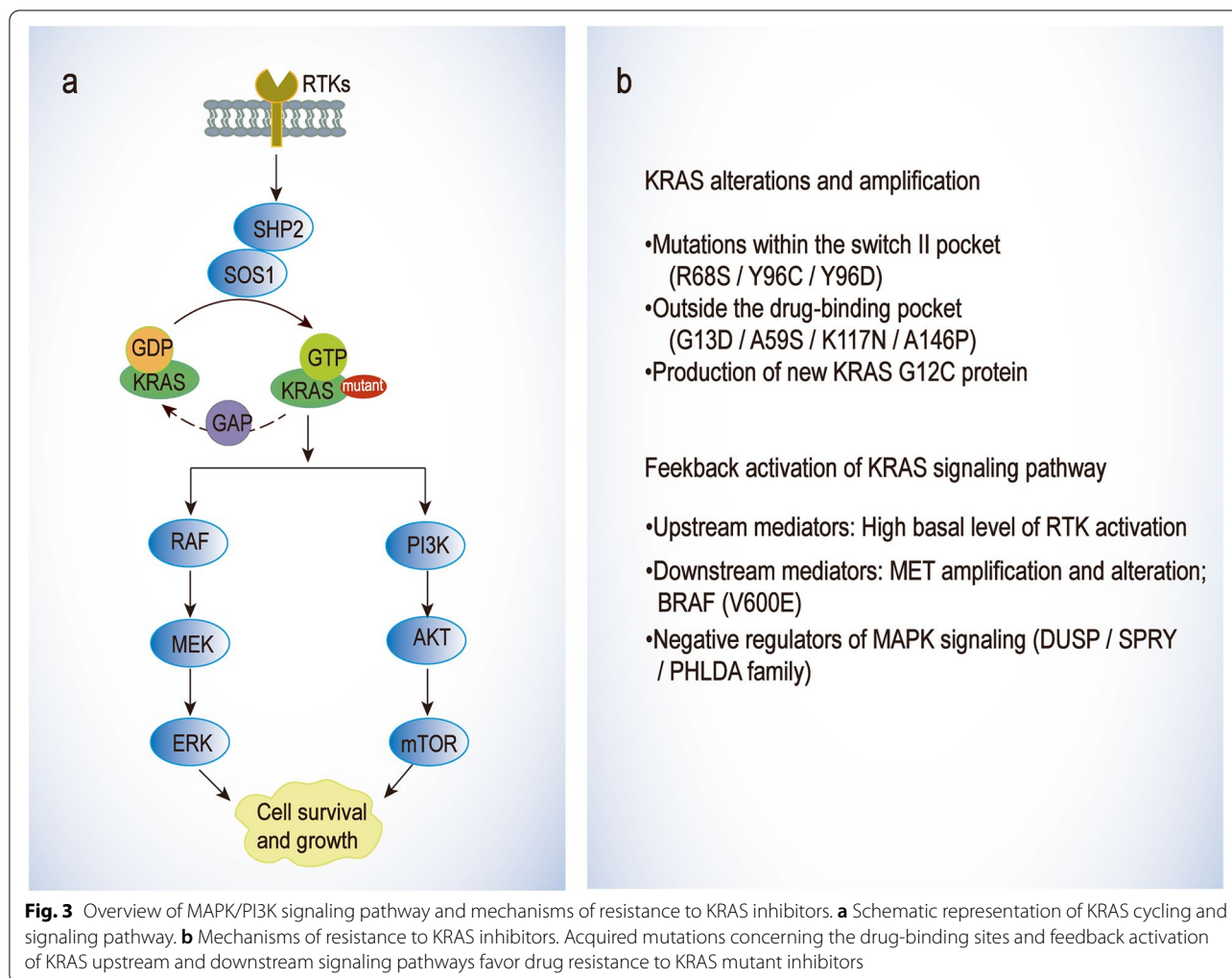
to KRAS (G12C) and KRAS (G13C), respectively, in the GTP-bound state and have antiproliferative activity in cells. However, since the canonical GTP confirmation could be disrupted after binding molecules, approaches targeting the GTP-bound state might also yield potential resistance to covalent inhibitors of GDP-bound KRAS (G12C) [10].

#### ***Feedback activation of KRAS upstream and downstream signaling pathways***

Multiple studies have demonstrated that the efficacy of KRAS inhibition can be attenuated by feedback activation of upstream or downstream mediators and other negative regulators. Stimulation of ARS1620-treated cells with epidermal growth factor (EGF) resulted in reactivation of KRAS in the cells, strongly suggesting that EGFR mediates adaptive resistance to KRAS (G12C) inhibitors [97]. When activated by signals from RTKs, such as EGFR, KRAS triggered multiple proliferative signaling cascades, including MAPK and PI3K pathways to induce cell growth, division, and differentiation [8, 12, 98].

Further studies reveal that tumor type can affect response rates partially owing to the different levels of RTK activation. Most patients with KRAS (G12C) in NSCLC benefit from selective KRAS (G12C) inhibition, whereas CRC patients with the same mutation rarely respond to KRAS (G12C) inhibition [99]. Unlike NSCLC cell lines, the KRAS (G12C) CRC models have a high basal level of RTK activation and respond to growth factor stimulation [99]. KRAS (G12C) inhibition induces a higher rebound of phosphorylated ERK in CRC cells than in NSCLC cells. Hence, enhanced EGFR signaling is thought to mediate adaptive resistance of KRAS (G12C) inhibitors [99–101]. The anti-EGFR antibodies, cetuximab and panitumumab, were approved to treat RAS/RAF wild-type CRC. Cetuximab sensitizes the KRAS (G12C) CRC cells to AMG510, and the combination restores secondary resistance to anti-EGFR antibodies. In contrast, EGFR TKIs were approved for the treatment of EGFR-mutant lung cancer. Since RTK signaling in CRC is dominated by wild-type EGFR, a KRAS (G12C) inhibitor combined with an anti-EGFR monoclonal antibody can block receptor signaling rather than inhibit EGFR kinase activity [102–104].

Inhibiting KRAS mutation pathway by attenuating the activity of the upstream mediators is a promising combination therapeutic strategy. In addition to EGFR TKIs, BI1701963, a SOS1 blocker that acts as a pan-KRAS inhibitor, inhibits the binding of KRAS to GTP. BI1701963 is used in combination with trametinib to treat patients with any KRAS mutation [61, 97]. SOS1 inhibition in combination with AMG510 showed pharmacological blockade of WT RAS in KRAS (G12C)



tumors. Furthermore, the combination of KRAS (G12C) inhibitor and WT RAS upstream activators, such as SHP2, is synergistic [105, 106]. SHP2 inhibitors can restore the sensitivity of KRAS-mutant NSCLC to MEK inhibition and increase inactive GDP-bound KRAS. A triplet combination of KRAS (G12C), MEK, and SHP2 inhibitors showed an augmented effect [7, 97, 107].

Meanwhile, the changing activity of the downstream effectors of KRAS also leads to the occurrence of drug resistance. For instance, BRAF (V600E) and MAP2K1/MEK1 (K57T, K57N, I99\_K104 deletion, and E102\_I103 deletion) can also cause acquired drug resistance [94, 108–111]. Sub-clonal evolution of MET amplification in KRAS (G12C) NSCLC cells that have become resistant to AMG510 in vitro has been reported previously [112]. Amplified MET increases the active form of RAS. Besides, MET also enhances AKT activation in the absence of RAS [112]. Crizotinib is an MET inhibitor that restores sensitivity to AMG510 by eliminating the MAPK

and PI3K signaling pathways. Dual MET/KRAS (G12C) inhibition resulted in tumor shrinkage in AMG510-resistant xenograft mice [94, 113]. Similarly, combining a KRAS (G12C) inhibitor with a PI3K or mTOR inhibitor could also overcome the adaptive increase in PI3K signaling in mouse xenografts [97, 114].

Besides the previously mentioned pathway molecules, negative regulators should be also taken into consideration. RNA sequencing revealed that KRAS (G12C) inhibition causes significant repression of DUSP, SPRY, and PHLDA family genes known as negative regulators of MAPK pathway [115, 116]. Oncogenic KRAS engages NF1/RSK1 to feedback inhibition of WT RAS signaling. Consequently, inhibition of oncogenic KRAS disengages this negative feedback pathway, leading to WT RAS activation and triggering adaptive drug resistance [105]. Taking together, inhibition of KRAS (G12C) can be overcome by feedback activation of either upstream or downstream molecules of KRAS. Therefore, the above findings

**Table 2** Clinical trials targeting KRAS mutation cancers

Target	Drug	Combinations	Tumor type	Phase	Trial number
KRAS-G12C	AMG510	Pembrolizumab (anti-PD-1 ab)	KRAS p.G12C Mutant Advanced Solid Tumors	II	NCT03600883
		MVASI	NSCLC	II	NCT05180422
		Docetaxel (microtubule inhibitor)	KRAS p. G12C Mutated Advanced Metastatic NSCLC	III	NCT04303780
	MRTX849	Docetaxel (microtubule inhibitor)	Advanced NSCLC	III	NCT04685135
		Pembrolizumab	Metastatic NSCLC	II	NCT04613596
	LY3499446	Cetuximab (anti-EGFR ab)	Malignant Neoplastic Disease	II	NCT03785249
		Abemaciclib (CDK4/6 inhibitor); Cetuximab (anti-EGFR ab); Erlotinib (EGFR inhibitor); Docetaxel (microtubule inhibitor)	NSCLC; CRC	II	NCT04165031
JAB-21822	Cetuximab (anti-EGFR ab)	Advanced CRC	II	NCT05194995	
GDC-6036	Atezolizumab (anti-PD-L1 ab); Cetuximab (anti-EGFR ab); Bevacizumab (anti-VEGF ab); Erlotinib (EGFR inhibitor)	NSCLC; CRC; Advanced Solid Tumors	I	NCT04449874	
KRAS-G12D	siG12D-LODER	Gemcitabine + nab-paclitaxel	Pancreatic Cancer	II	NCT01676259
SHP2	RMC-4630	LY3214996 (ERK inhibitor)	Pancreatic Cancer; CRC; NSCLC; KRAS Mutation-Related Tumors	I	NCT04916236
		ERAS-601	Cobimetinib (MEK inhibitor)	Advanced or Metastatic Solid Tumors	I
SOS1	BI 1701963	Trametinib (MEK inhibitor)	Solid Tumors, KRAS Mutation	I	NCT04111458
ERK	GDC-0994	Cobimetinib (MEK inhibitor)	NSCLC; Metastatic CRC; Metastatic NSCLC; Melanoma	I	NCT02457793
	Ulixertinib	Pembrolizumab (anti-PD-1 ab)	Pancreatic Cancer	I	NCT03454035
p110α	GDC-0077	Entrectinib (pan-TRK inhibitor)	Advanced Unresectable or Metastatic Solid Malignancy	II	NCT04632992

NSCLC Non-small Cell Lung Cancer, CRC Colorectal Cancer

of drug resistance mechanisms bring promising directions for combination therapy (Table 2).

#### FAK-YAP Axis

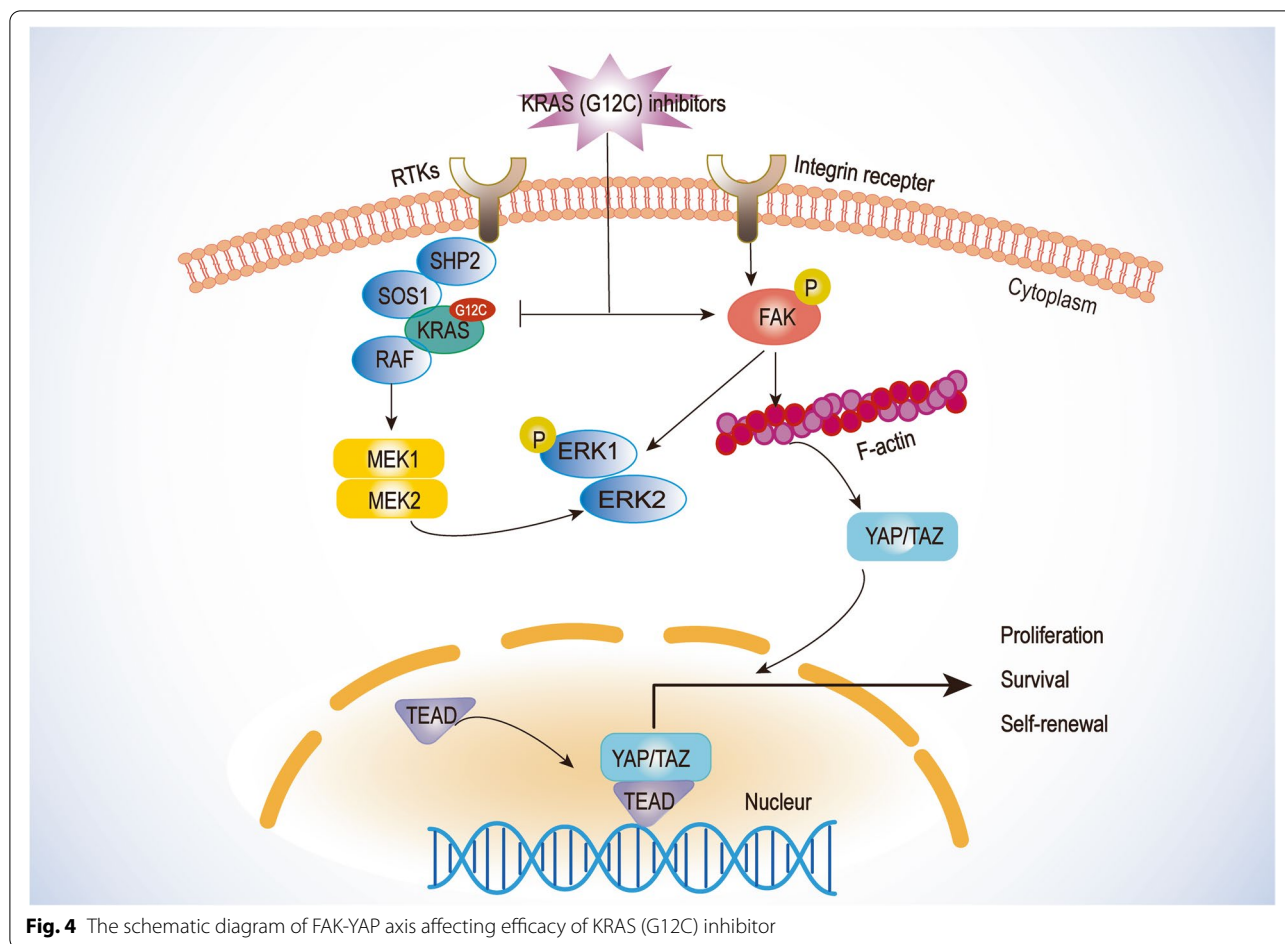
Focal adhesion kinase (FAK) is a non-receptor kinase that plays a role in regulating cell growth, signaling transduction, and tumor cell invasion [117]. Elevated phosphorylated FAK level is related to the poor prognosis of multiple cancers [118]. Multiple FAK inhibitors, such as IN10018, confer potent anticancer effects and effectively suppress the progression of KRAS mutant carcinoma [119–121]. FAK is a biomarker of the aberrant KRAS signaling pathway, and it responds to the administration of KRAS (G12C) inhibitors. Both aberrant FAK-YAP signaling and FAK-related fibrogenesis affect the development of resistance to KRAS (G12C) inhibitors. In short, sustained activation of FAK is induced by KRAS (G12C) inhibition, leading to attenuated treatment outcomes by dysregulating FAK-YAP signaling and fibrosis formation (Fig. 4). A synergistic effect was achieved with the combination treatment of KRAS (G12C) inhibition and a FAK inhibitor (IN10018). This combination simultaneously reduces the degree of drug resistance. The synergistic benefit of the combination therapy was consistently observed in different CDX and PDX models of KRAS (G12C) cancers [122]. Besides, activation of the FAK signaling pathway

has an impact on the tumor microenvironment [123, 124]. FAK-related fibrosis can form a barrier in tumors that limits the CD8<sup>+</sup> T cells infiltration in tumors, and FAK inhibition can ultimately promote the antitumor effects by decreasing the number of tumor-resident Tregs. Thus, FAK inhibition may enhance KRAS (G12C) inhibition and immunotherapy [125, 126].

#### Epithelial-to-mesenchymal transition (EMT)

Induction of epithelial-to-mesenchymal transition (EMT) is associated with intrinsic and acquired resistance to KRAS (G12C) inhibition in cell lines previously sensitive to AMG510. Induction of EMT leads to rewiring the expression of several RTKs, such as ERBB3 and FGFR1. Drug resistance induced by EMT enhances PI3K/AKT signaling and MAPK signaling [97, 127–129].

Phosphoproteomics studies identified adaptive responses of cell types to KRAS-mutant inhibition [130, 131]. High basal ERBB2/3 associated with epithelial gene signatures was observed in KRAS (G12C) cell lines and human lung cancers. Markers related to IGF1R/ERBB2/3 pathway in the epithelial cells and fibroblast growth factor receptor (FGFR1)/AXL pathway in the mesenchymal cells should be considered in patient care. The IGF1R/ERBB2/3 signaling pathway may respond to the suppressed ERK and AKT signaling after KRAS (G12C) inhibitor treatment



**Fig. 4** The schematic diagram of FAK-YAP axis affecting efficacy of KRAS (G12C) inhibitor

and favor the change to epithelial cell types (Fig. 5). This changed cell type is more sensitive to co-inhibition by SHP2 and SOS1 [130–135].

The above-mentioned drug resistance mechanisms can provide precise and effective treatment strategies through combination therapy. High feedback activation of the FGFR/AXL signaling pathway was found in mesenchymal cells. Inhibition of the FGFR signaling pathway reduces ERK and mTOR activation, whereas AXL inhibition attenuates the activation of PI3K pathway [43, 136–139].

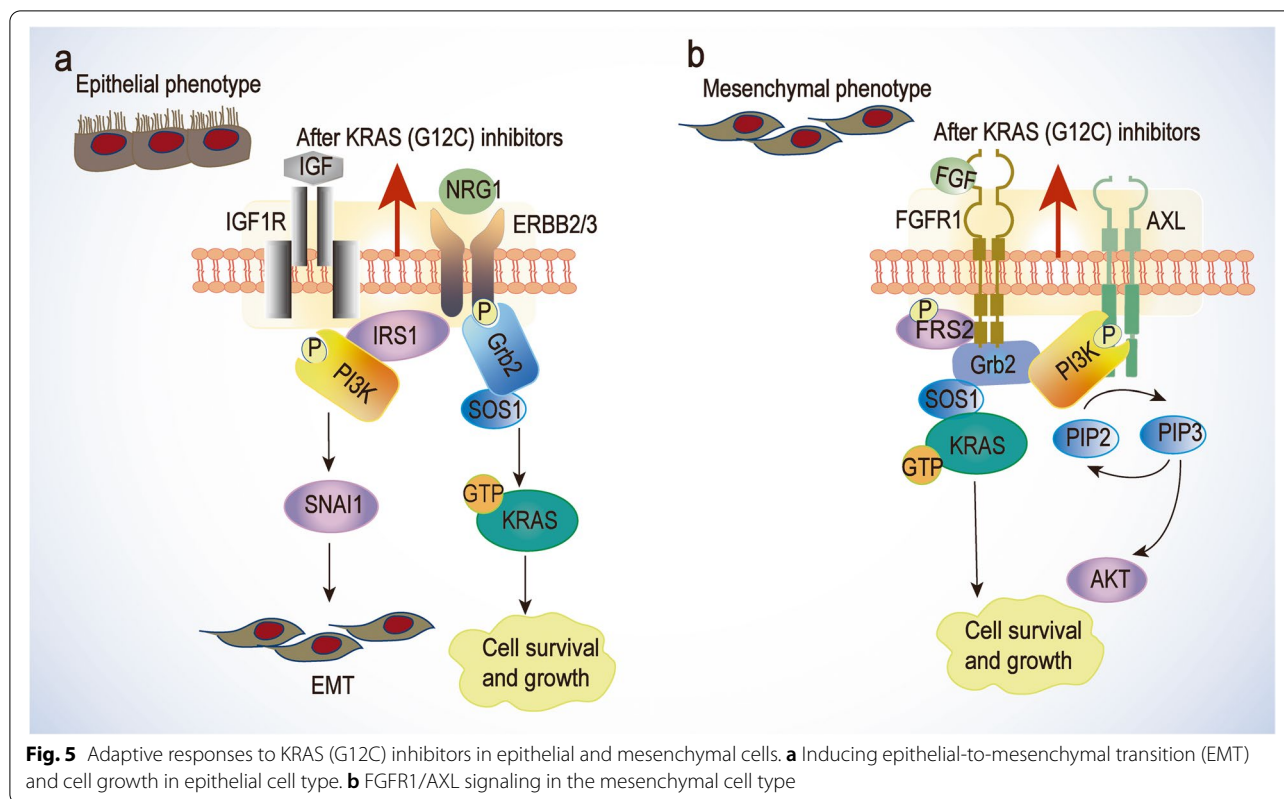
**The transition of pathological type**

Awad et al. found that tumor cells of 2 out of 10 patients (9 with NSCLC and 1 with CRC) transformed from adenocarcinoma to squamous cell carcinoma during MRTX849 treatment without any other identifiable drug resistance mechanisms [94]. It uncovers that non-genotype resistance mechanisms exist. Similar phenomenon occurs in other targeted therapies for lung cancer [94, 140, 141]. Squamous cell differentiation has been described in the mechanism of acquired resistance to

EGFR TKI treatment in lung adenocarcinoma. Adaptive changes in gene expression under treatment pressure may result in the conversion of one histological type to another one. The conversion of tumor cells into a distinct histological subtype leads to a loss of dependence on the original oncogenic driver as a mechanism of tumor escape from a targeted dependency. The therapeutic regimen for patients with lung squamous carcinoma transformation is not yet established and prospective studies are needed. Single-cell sequencing technologies will provide insight into this problem by confirming the histological subtype of tumor cell with molecular characteristics [142, 143].

**Signaling of cell cycle regulation**

Cyclin dependent kinase inhibitor 2A (CDKN2A), a cell cycle regulator and tumor suppressor, regulates CDK4/6-related RB phosphorylation and cell proliferation [60]. Loss of function mutation in the cell cycle tumor suppressor CDKN2A (p16) results in a hyperactivated cyclin-dependent kinases 4/6 (CDK4/6)-dependent retinoblastoma protein (RB) phosphorylation and a cell cycle



**Fig. 5** Adaptive responses to KRAS (G12C) inhibitors in epithelial and mesenchymal cells. **a** Inducing epithelial-to-mesenchymal transition (EMT) and cell growth in epithelial cell type. **b** FGFR1/AXL signaling in the mesenchymal cell type

transition. It was found that up to 20% of KRAS-mutant NSCLC has concurrent CDKN2A mutations. Hallin et al. illustrated that genetic alterations in cell cycle regulators resulted in cell cycle dysregulation and changed KRAS mutant allele frequency, identifying additional factors that could attenuate the therapeutic response to MRTX849 [60]. Because of the significant impact of MRTX849 on many genes in regulating cell cycle and apoptosis, a further understanding of the molecular mechanisms of its antitumor activity is necessary. Inhibition of cell cycle genes in vivo in MRTX849-treated xenografts intensified further tumor growth inhibition over the effects of KRAS inhibition alone [60]. Indeed, CDK4 inactivation led to reduced tumor development and induction of senescence in KRAS (G12V) mouse models. In a KRAS (G12C)-mutated and CDKN2A-deficient xenograft model, the combination of MRTX849 and the CDK4/6 inhibitor palbociclib resulted in a significant reduction in tumor volume, showing considerable synergistic effect [42, 144, 145].

**Immune mechanisms**

Histone deacetylase 5 (HDAC5)-induced bypass promotes macrophage recruitment into the TME and enables tumor recurrence following the extinction of KRAS (G12D) [146]. KRAS (G12D) signaling tightly controls

transcription factors, including downstream effectors such as MAPK, PI3K/AKT, and the Janus kinase (JAK)/signal transducer and activator of transcription (STAT) signaling pathways that regulate HDAC5 expression. HDAC5 promotes the upregulation of Chemokine ligand 2 (CCL2) by inhibiting SOCS3, thereby recruiting CCR2<sup>+</sup> macrophages [147]. These tumor-associated macrophages (TAMs) provide cancer cells with TGFβ that promotes KRAS mutation-independent PDAC cell growth after KRAS mutation-targeted inhibition. Inhibitors of the HDAC5-SMAD4 pathways in combination with KRAS (G12D) inhibition have synergistic antitumor effects in an isogenic PDAC model [146]. Using ingenuity pathway analysis to assess 950 differentially expressed genes, it was found that activated TGFβ signaling is a critical upstream mediator of different pathways related to drug resistance [148]. Consistent with changes in fuel source, there was a very significant increase in fat and bile acid metabolism as well as lipogenesis and myogenesis. In addition, tumors exhibited increased xenobiotics after treatment, suggesting that tumor cells are able to reduce intracellular AMG510 levels.

It has been shown that AMG510-resistant tumors have significantly reduced adaptive immune cell populations and become immunologically “cold” with dynamic and diverse remodeling patterns within the TME, such

as alterations in angiogenesis, coagulation pathways, and fatty acid metabolism [149]. In almost all immunodeficient Balb/c mice, AMG510 induced only transient tumor regression followed by tumor relapse. It is revealed that the compromised host immune system may generate a novel drug resistance mechanism independent of MAPK reactivation [149]. The number of CD8<sup>+</sup> T cells, macrophages, and DCs in KRAS (G12C) tumors increased significantly after 5 days of AMG510 treatment. Simultaneously, the expression of molecules for interferon signaling, chemokine production, and antigen processing increased [149]. Canon et al. suggested that AMG510 treatment resulted in increased T cell priming and antigen recognition and promoted the establishment of long-term T cell responses [42]. AMG510 treatment results in an inflammatory tumor microenvironment that is highly sensitive to immune checkpoint inhibition. Combining AMG510 with anti-PD-1 or anti-PD-L1 therapy augmented T cell infiltration and achieve longer-term efficacy [42, 50, 150].

#### **Other resistance mechanisms in KRAS mutation cancers**

Besides the resistance mechanisms mentioned above, there are many other resistance mechanisms deserving our discussion. For example, oncogene rearrangements, including EML4-ALK and CCDC6-RET, have been reported in three CRC patients treated with MRTX849 [94]. This observation could be explained by different genomic instability or DNA damage response at baseline or in response to KRAS inhibition in CRC and NSCLC. Fusion genes may also be one of the mechanisms of drug resistance [94]. Furthermore, Hou et al. revealed that USP21 increases macropinocytosis by microtubule-affinity-regulating kinase 3 (MARK3), thus providing metabolic support after KRAS mutation extinction in PDAC cancer cells [51]. USP21 overexpression also upregulates mTOR-related signaling pathways. Therefore, USP21 is expected to be a viable therapeutic target in PDAC, either as monotherapy or in combination with inhibitors targeting KRAS mutation [51, 52].

Another example of the resistance mechanisms is posttranslational modifications. KRAS is modified by SUMO3 in the conserved lysine42 reported by recent studies [53]. Dai et al. revealed that the expression of a SUMO-resistant mutant appears to suppress tumor growth in xenograft models [53]. Furthermore, sumoylation boosts tumor growth by maintaining KRAS (G12V) expression. The overexpression of wild-type KRAS significantly stimulated cell migration, which is further promoted by KRAS (G12V) [54, 55]. Combined, the observations of these resistance mechanisms help to

develop new combination therapeutics overcoming clinical drug resistance [53].

In conclusion, the possible resistance mechanisms of KRAS (G12C) inhibition are diverse and complex. The main drivers include secondary mutations of KRAS itself, reactivation of multiple MAPK effectors from upstream and downstream of KRAS, immunodeficiency, etc. Combination therapy is currently an effective means to overcome drug resistance, and more cost-effective methods need to be explored.

#### **Future directions and conclusions**

Specific KRAS (G12C) inhibitors will change the therapeutic landscape of KRAS-driven tumors, benefiting many patients with KRAS mutations [27, 56]. Unfortunately, innate and acquired resistance to KRAS inhibitors has hindered their development, rendering these new drugs less effective or even ineffective. In preclinical studies, possible resistance mechanisms for KRAS mutation therapy include secondary mutations in the KRAS binding site, reactivation of multiple upstream and downstream effectors, cell-cycle dysregulation, and immune deficiency [94, 95]. Importantly, these mechanisms of drug resistance appear to be tissue-specific [31].

It was thought that KRAS protein plays an on/off role in the GDP/GTP cycle. However, this concept oversimplifies the complex interactions between the states of individual molecules and the resulting dynamic protein conformations, which is unique to each mutation. The conformational state of each KRAS mutant determines the active state of the entire KRAS protein in the cells. Our current understanding of the impact of different mutations on the biochemical activity of KRAS proteins is based on the results of extensive structure-function studies conducted over the past 40 years, while biological validation of functional differences has only begun in recent years [57, 151].

Vetter et al. mention that different KRAS mutations are grouped into four categories based on their effects on GTP hydrolysis, nucleotide exchange, and effector protein interactions [152]. Tissue- and cell-type-specific factors such as extracellular signals, GAP and GEF expression and localization patterns, effector expression patterns and binding affinity, and cellular distribution of the two KRAS spliceosomes (KRAS4A and KRAS4B) should also be considered [31]. For example, KRAS (G13D) enhances nucleotide exchange. Rapid exchange mutants can synergize with GEF to produce extremely high levels of nucleotide exchange. However, these rapid exchange mutations may deplete the activity of GEF, thereby desensitizing cancer cells to GEF inhibition [152–154]. A more precise and accurate understanding

of KRAS mutations is conducive to the development of novel inhibitors targeting KRAS mutations and the study of the corresponding drug resistance mechanisms.

Combination therapy based on a better understanding of drug resistance mechanisms holds great promise to induce long-term disease control or remission. Determining which combination strategies are most effective for patients will be challenging. First, tumor type can significantly affect response rates. According to the results of AMG510 in the phase I trial, this KRAS (G12C) inhibitor is effective in NSCLC (NCT03600883). 7 out of the 13 patients had a partial response (PR) and 6 had stable disease (SD). However, only 1 of 12 patients had a PR and 10 patients had SD in CRC [23]. Therefore, CRC is more difficult to treat than NSCLC, suggesting that CRC will require combination therapy. In phase I/II clinical trials (NCT03785249), three out of the five NSCLC patients achieved a PR, and one of two patients with CRC patients achieved a PR [94]. Moreover, combination therapy has always been more toxic, with poor safety, and combination therapy will bring more financial burden to patients [10]. The drug combination strategy should bring more efficacy and advantages to patients. Recently SHP2 inhibitors have shown promise in combination with KRAS (G12C) inhibitors. SHP2 inhibition increases GDP-bound KRAS levels, thereby enhancing the efficacy of G12C inhibition [107, 155]. In addition, the combination of AMG510 with anti-PD-1 therapy promotes T cell priming and long-term tumor-specific immune responses [42]. More studies need to be conducted to determine which combination strategy is most effective for patients.

#### Abbreviations

AKT: Serine/threonine-protein kinase; ASO: Antisense oligonucleotides; CCL2: Chemokine ligand 2; CDK4/6: Cyclin-dependent kinases 4/6; CDKN2A: Cyclin dependent kinase inhibitor 2A; CRC: Colorectal cancer; DCs: Dendritic cells; EAC/GEJC: Esophageal adenocarcinoma/gastroesophageal junction cancer; EGFR: Epidermal growth factor receptor; EMT: Epithelial-to-mesenchymal transition; ERK: Extracellular regulated protein kinases; FAK: Focal adhesion kinase; FDA: Food and Drug Administration; GAP: GTPase activating protein; GDP: Guanosine diphosphate; GEF: Guanine nucleotide exchange factor; GM-CSF: Granulocyte-macrophage colony-stimulating factor; GTP: Guanosine triphosphate; GTPase: Guanosine triphosphatase; HDAC5: Histone deacetylase 5; HER2: Human epithelial growth factor receptor 2; HRAS: Harvey-RAS; ICMT: Isoprenylcysteine carboxyl methyltransferase; IDC: Invasive ductal carcinoma; JAK: Janus kinase; KRAS: Kirsten rat sarcoma viral oncogene homolog; LUAD: Lung adenocarcinomas; MAPK: Mitogen-activated protein kinase; MARK3: Microtubule-affinity-regulating kinase 3; MEK: Mitogen-activated protein kinase kinase; mTOR: Mammalian target of rapamycin; NADPH: Nicotinamide adenine dinucleotide phosphate; NSCLC: Non-small cell lung cancer; PDAC: Pancreatic ductal adenocarcinoma; PDK1: Phosphoinositid-dependent kinase 1; PFS: Progression-free survival; PI3K: Phosphatidylinositol 3-kinase; PIP2: Phosphatidylinositol 4,5-diphosphate; PIP3: Phosphatidylinositol 3,4,5-triphosphate; PR: Partial response; RAF: Rapidly accelerated fibrosarcoma; RB: Retinoblastoma protein; ROS: Reactive oxygen species; RTK: Receptor tyrosine kinase; SD: Stable disease; SHP2: SH2-containing protein tyrosine phosphatase; SOS1: Son of sevenless 1; STA: Stomach adenocarcinoma; STAT: Signal transducer and

activator of transcription; TAM: Tumor-associated macrophage; UEC: Undifferentiated endometrial carcinoma.

#### Acknowledgements

We thank the current and former members of our laboratories and collaborators for their contributions to the publications cited in this review article, and we apologize for not being able to cite all the recent publications, due to space limitations.

#### Authors' contributions

JJQ, WZ, and XC conceptualized the manuscript. CZ, XG, and XZ collected the literature, and wrote the manuscript. CZ prepared the figures. JJQ, XL, and ZS edited and made significant revisions to the manuscript. All authors have read and approved the final manuscript.

#### Funding

This research was supported by grants from Key Laboratory of Prevention, Diagnosis and Therapy of Upper Gastrointestinal Cancer of Zhejiang Province (2022E10021), Medical Science and Technology Project of Zhejiang Province (WKJ-ZJ-2202), Program of Zhejiang Provincial TCM Sci-tech Plan (2020ZZ005), National Key R&D Program of China (2021YFA0910100), Shanghai Frontiers Science Center of TCM Chemical Biology, and Innovation Team and Talents Cultivation Program of National Administration of Traditional Chinese Medicine (ZYCXTD-D-202004).

#### Availability of data and materials

Not applicable.

#### Declarations

#### Ethics approval and consent to participate

Not applicable.

#### Consent for publication

Not applicable.

#### Competing interests

The authors declare that they have no competing interests.

#### Author details

<sup>1</sup>The Cancer Hospital of the University of Chinese Academy of Sciences (Zhejiang Cancer Hospital), Institute of Basic Medicine and Cancer (IBMC), Chinese Academy of Sciences, Hangzhou 310022, China. <sup>2</sup>School of Molecular Medicine, Hangzhou Institute for Advanced Study, UCAS, Hangzhou 310024, China. <sup>3</sup>Key Laboratory of Prevention, Diagnosis, and Therapy of Upper Gastrointestinal Cancer of Zhejiang Province, Hangzhou 310022, China. <sup>4</sup>College of Pharmaceutical Science, Zhejiang University of Technology, Hangzhou 310032, China. <sup>5</sup>Institute of Interdisciplinary Integrative Medicine Research and Shuguang Hospital, Shanghai University of Traditional Chinese Medicine, Shanghai 201203, China. <sup>6</sup>School of Pharmacy, Second Military Medical University, Shanghai 200433, China.

Received: 22 June 2022 Accepted: 25 July 2022

Published online: 04 August 2022

#### References

1. Comprehensive molecular characterization of human colon and rectal cancer. *Nature*. 2012;487(7407):330–7.
2. Bailey P, Chang DK, Nones K, Johns AL, Patch A-M, Gingras M-C, et al. Genomic analyses identify molecular subtypes of pancreatic cancer. *Nature*. 2016;531(7592):47–52.
3. Campbell JD, Alexandrov A, Kim J, Wala J, Berger AH, Pedamallu CS, et al. Distinct patterns of somatic genome alterations in lung adenocarcinomas and squamous cell carcinomas. *Nat Genet*. 2016;48(6):607–16.
4. Nadal E, Chen G, Prensner JR, Shiratsuchi H, Sam C, Zhao L, et al. KRAS-G12C mutation is associated with poor outcome in surgically resected lung adenocarcinoma. *J Thorac Oncol*. 2014;9(10):1513–22.

5. Prior IA, Hood FE, Hartley JL. The frequency of Ras mutations in Cancer. *Cancer Res.* 2020;80(14):2969–74.
6. Vasan N, Boyer JL, Herbst RS. A RAS renaissance: emerging targeted therapies for KRAS-mutated non-small cell lung cancer. *Clin Cancer Res.* 2014;20(15):3921–30.
7. Xue JY, Zhao Y, Aronowitz J, Mai TT, Vides A, Qeriqi B, et al. Rapid non-uniform adaptation to conformation-specific KRAS(G12C) inhibition. *Nature.* 2020;577(7790):421–5.
8. Bourne HR, Sanders DA, McCormick F. The GTPase superfamily: conserved structure and molecular mechanism. *Nature.* 1991;349(6305):117–27.
9. Xu GF, O'Connell P, Viskochil D, Cawthon R, Robertson M, Culver M, et al. The neurofibromatosis type 1 gene encodes a protein related to GAP. *Cell.* 1990;62(3):599–608.
10. Moore AR, Rosenberg SC, McCormick F, Malek S. RAS-targeted therapies: is the undruggable drugged? *Nat Rev Drug Discov.* 2020;19(8):533–52.
11. Gentile DR, Rathinaswamy MK, Jenkins ML, Moss SM, Siempelkamp BD, Renslo AR, et al. Ras binder induces a modified switch-II pocket in GTP and GDP states. *Cell Chem Biol.* 2017;24(12):1455–66.
12. Riely GJ, Marks J, Pao W. KRAS mutations in non-small cell lung cancer. *Proc Am Thorac Soc.* 2009;6(2):201–5.
13. Fearon ER, Vogelstein B. A genetic model for colorectal tumorigenesis. *Cell.* 1990;61(5):759–67.
14. Pellis S, Divjak M, Romanowski P, Impey H, Hawkins NJ, Clarke AR, et al. Developmentally-regulated expression of murine K-ras isoforms. *Oncogene.* 1997;15(15):1781–6.
15. Drosten M, Dhawahir A, Sum EYM, Urosevic J, Lechuga CG, Esteban LM, et al. Genetic analysis of Ras signalling pathways in cell proliferation, migration and survival. *EMBO J.* 2010;29(6):1091–104.
16. Cox AD, Fesik SW, Kimmelman AC, Luo J, Der CJ. Drugging the undruggable RAS: Mission possible? *Nat Rev Drug Discov.* 2014;13(11):828–51.
17. Ryan MB, Corcoran RB. Therapeutic strategies to target RAS-mutant cancers. *Nat Rev Clin Oncol.* 2018;15(11):709–20.
18. Simanshu DK, Nissley DV, McCormick F. RAS proteins and their regulators in human disease. *Cell.* 2017;170(1):17–33.
19. Papke B, Der CJ. Drugging RAS: know the enemy. *Science.* 2017;355(6330):1158–63.
20. Malumbres M, Barbacid M. RAS oncogenes: the first 30 years. *Nat Rev Cancer.* 2003;3(6):459–65.
21. Janes MR, Zhang J, Li L-S, Hansen R, Peters U, Guo X, et al. Targeting KRAS mutant cancers with a covalent G12C-specific inhibitor. *Cell.* 2018;172(3):578–89.
22. Ostrem JML, Shokat KM. Direct small-molecule inhibitors of KRAS: from structural insights to mechanism-based design. *Nat Rev Drug Discov.* 2016;15(11):771–85.
23. Hong DS, Fakih MG, Strickler JH, Desai J, Durm GA, Shapiro GI, et al. KRAS inhibition with Sotorasib in advanced solid tumors. *N Engl J Med.* 2020;383(13):1207–17.
24. Kessler D, Gmachl M, Mantoulidis A, Martin LJ, Zoepfel A, Mayer M, et al. Drugging an undruggable pocket on KRAS. *Proc Natl Acad Sci U S A.* 2019;116(32):15823–9.
25. Wang X, Allen S, Blake JF, Bowcut V, Briere DM, Calinisan A, et al. Identification of MRTX1133, a noncovalent, potent, and selective KRAS inhibitor. *J Med Chem.* 2022;65(4):3123–33.
26. Hofmann MH, Gerlach D, Misale S, Petronczki M, Kraut N. Expanding the reach of precision oncology by drugging all KRAS mutants. *Cancer Discov.* 2022;12(4):924–37.
27. Uprety D, Adjei AA. KRAS: from undruggable to a druggable Cancer target. *Cancer Treat Rev.* 2020;89:102070.
28. Weinberg F, Hamanaka R, Wheaton WW, Weinberg S, Joseph J, Lopez M, et al. Mitochondrial metabolism and ROS generation are essential for Kras-mediated tumorigenicity. *Proc Natl Acad Sci U S A.* 2010;107(19):8788–93.
29. Dai E, Han L, Liu J, Xie Y, Kroemer G, Klionsky DJ, et al. Autophagy-dependent ferroptosis drives tumor-associated macrophage polarization via release and uptake of oncogenic KRAS protein. *Autophagy.* 2020;16(11):2069–83.
30. Fang Z, Marshall CB, Nishikawa T, Gossert AD, Jansen JM, Jahnke W, et al. Inhibition of K-RAS4B by a unique mechanism of action: stabilizing membrane-dependent occlusion of the effector-binding site. *Cell Chem Biol.* 2018;25(11):1327–36.
31. Cook JH, Melloni GEM, Gulhan DC, Park PJ, Haigis KM. The origins and genetic interactions of KRAS mutations are allele- and tissue-specific. *Nat Commun.* 2021;12(1):1808.
32. Bournet B, Buscail C, Muscari F, Cordelier P, Buscail L. Targeting KRAS for diagnosis, prognosis, and treatment of pancreatic cancer: hopes and realities. *Eur J Cancer.* 2016;54:75–83.
33. Rojas JM, Oliva JL, Santos E. Mammalian son of sevenless guanine nucleotide exchange factors: old concepts and new perspectives. *Genes Cancer.* 2011;2(3):298–305.
34. Buday L, Downward J. Many faces of Ras activation. *Biochim Biophys Acta.* 2008;1786(2):178–87.
35. Pao W, Girard N. New driver mutations in non-small-cell lung cancer. *Lancet Oncol.* 2011;12(2):175–80.
36. Mangiapane LR, Nicotra A, Turdo A, Gaggianesi M, Bianca P, Di Franco S, et al. PI3K-driven HER2 expression is a potential therapeutic target in colorectal cancer stem cells. *Gut.* 2022;71(1):119–28.
37. Martinelli E, Morgillo F, Troiani T, Ciardiello F. Cancer resistance to therapies against the EGFR-RAS-RAF pathway: the role of MEK. *Cancer Treat Rev.* 2017;53:61–9.
38. Fresno Vara JA, Casado E, de Castro J, Cejas P, Belda-Iniesta C, González-Barón M. PI3K/Akt signalling pathway and cancer. *Cancer Treat Rev.* 2004;30(2):193–204.
39. Hoxhaj G, Manning BD. The PI3K-AKT network at the interface of oncogenic signalling and cancer metabolism. *Nat Rev Cancer.* 2020;20(2):74–88.
40. Ostrem JM, Peters U, Sos ML, Wells JA, Shokat KM. K-Ras(G12C) inhibitors allosterically control GTP affinity and effector interactions. *Nature.* 2013;503(7477):548–51.
41. Nagasaka M, Li Y, Sukari A, Ou SI, Al-Hallak MN, Azmi AS. KRAS G12C game of thrones, which direct KRAS inhibitor will claim the iron throne? *Cancer Treat Rev.* 2020;84:101974.
42. Canon J, Rex K, Saiki AY, Mohr C, Cooke K, Bagal D, et al. The clinical KRAS(G12C) inhibitor AMG 510 drives anti-tumour immunity. *Nature.* 2019;575(7781):217–23.
43. Zhang Z, Lee JC, Lin L, Olivass V, Au V, LaFramboise T, et al. Activation of the AXL kinase causes resistance to EGFR-targeted therapy in lung cancer. *Nat Genet.* 2012;44(8):852–60.
44. Hallin J, Engstrom LD, Hargis L, Calinisan A, Aranda R, Briere DM, et al. The KRAS(G12C) inhibitor MRTX849 provides insight toward therapeutic susceptibility of KRAS-mutant cancers in mouse models and patients. *Cancer Discov.* 2020;10(1):54–71.
45. Jänne PA, Rybkin II, Spira AI, Riely GJ, Papadopoulos KP, Sabari J, et al. KRYSTAL-1: activity and safety of Adagrasib (MRTX849) in advanced/metastatic non-small-cell lung cancer (NSCLC) harboring KRAS G12C mutation. *Eur J Cancer.* 2020;138:51–2.
46. Winter-Vann AM, Baron RA, Wong W, dela Cruz J, York JD, Gooden DM, et al. A small-molecule inhibitor of isoprenylcysteine carboxyl methyltransferase with antitumor activity in cancer cells. *Proc Natl Acad Sci U S A.* 2005;102(12):4336–41.
47. Wang M, Hossain MS, Tan W, Coolman B, Zhou J, Liu S, et al. Inhibition of isoprenylcysteine carboxylmethyltransferase induces autophagic-dependent apoptosis and impairs tumor growth. *Oncogene.* 2010;29(35):4959–70.
48. Manu KA, Chai TF, Teh JT, Zhu WL, Casey PJ, Wang M. Inhibition of Isoprenylcysteine Carboxylmethyltransferase induces cell-cycle arrest and apoptosis through p21 and p21-regulated BNIP3 induction in pancreatic Cancer. *Mol Cancer Ther.* 2017;16(5):914–23.
49. Liu C, Lu H, Wang H, Loo A, Zhang X, Yang G, et al. Combinations with allosteric SHP2 inhibitor TNO155 to block receptor tyrosine kinase signaling. *Clin Cancer Res.* 2021;27(1):342–54.
50. Skoulidis F, Byers LA, Diaio L, Papadimitrakopoulou VA, Tong P, Izzo J, et al. Co-occurring genomic alterations define major subsets of KRAS-mutant lung adenocarcinoma with distinct biology, immune profiles, and therapeutic vulnerabilities. *Cancer Discov.* 2015;5(8):860–77.
51. Hou P, Ma X, Zhang Q, Wu C-J, Liao W, Li J, et al. USP21 deubiquitinase promotes pancreas cancer cell stemness via Wnt pathway activation. *Genes Dev.* 2019;33(19–20):1361–6.
52. Pannu J, Belle JI, Förster M, Duerr CU, Shen S, Kane L, et al. Ubiquitin specific protease 21 is dispensable for normal development, hematopoiesis and lymphocyte differentiation. *Plos One.* 2015;10(2):e0117304.



53. Dai W, Xie S, Chen C, Choi BH. Ras sumoylation in cell signaling and transformation. *Semin Cancer Biol.* 2021;76:301–9.
54. Choi BH, Chen C, Philips M, Dai W. RAS GTPases are modified by SUMOylation. *Oncotarget.* 2018;9(4):4440–50.
55. Choi BH, Philips MR, Chen Y, Lu L, Dai W. K-Ras Lys-42 is crucial for its signaling, cell migration, and invasion. *J Biol Chem.* 2018;293(45):17574–81.
56. Thein KZ, Biter AB, Hong DS. Therapeutics targeting mutant KRAS. *Annu Rev Med.* 2021;72:349–64.
57. Yaeger R, Corcoran RB. Targeting alterations in the RAF-MEK pathway. *Cancer Discov.* 2019;9(3):329–41.
58. Muhsin M, Graham J, Kirkpatrick P. Gefitinib. *Nat Rev Drug Discov.* 2003;2(7):515–6.
59. Ross SJ, Revenko AS, Hanson LL, Ellston R, Staniszevska A, Whalley N, et al. Targeting KRAS-dependent tumors with AZD4785, a high-affinity therapeutic antisense oligonucleotide inhibitor of KRAS. *Sci Transl Med.* 2017;9(394):eaal5253.
60. Hallin J, Engstrom LD, Hargis L, Calinisan A, Aranda R, Briere DM, et al. The KRAS inhibitor MRTX849 provides insight toward therapeutic susceptibility of KRAS-mutant cancers in mouse models and patients. *Cancer Discov.* 2020;10(1):54–71.
61. Hillig RC, Sautier B, Schroeder J, Moosmayer D, Hilpmann A, Stegmann CM, et al. Discovery of potent SOS1 inhibitors that block RAS activation via disruption of the RAS-SOS1 interaction. *Proc Natl Acad Sci U S A.* 2019;116(7):2551–60.
62. Ruess DA, Heynen GJ, Ciecieski KJ, Ai J, Berninger A, Kabacaoglu D, et al. Mutant KRAS-driven cancers depend on PTPN11/SHP2 phosphatase. *Nat Med.* 2018;24(7):954–60.
63. Spencer-Smith R, Koide A, Zhou Y, Eguchi RR, Sha F, Gajwani P, et al. Inhibition of RAS function through targeting an allosteric regulatory site. *Nat Chem Biol.* 2017;13(1):62–8.
64. Khan I, Spencer-Smith R, O'Bryan JP. Targeting the  $\alpha$ 4- $\alpha$ 5 dimerization interface of K-RAS inhibits tumor formation in vivo. *Oncogene.* 2019;38(16):2984–93.
65. Chardin P, Mattei MG. Chromosomal localization of two genes encoding human ras exchange factors: SOS1 maps to the 2p22->p16 region and SOS2 to the 14q21->q22 region of the human genome. *Cytogenet Cell Genet.* 1994;66(1):68–9.
66. Hofmann MH, Gmachl M, Ramharter J, Savarese F, Gerlach D, Marszalek JR, et al. BI-3406, a potent and selective SOS1-KRAS interaction inhibitor, is effective in KRAS-driven cancers through combined MEK inhibition. *Cancer Discov.* 2021;11(1):142–57.
67. Yuan X, Bu H, Zhou J, Yang CY, Zhang H. Recent advances of SHP2 inhibitors in Cancer therapy: current development and clinical application. *J Med Chem.* 2020;63(20):11368–96.
68. Chen YN, LaMarche MJ, Chan HM, Fekkes P, Garcia-Fortanet J, Acker MG, et al. Allosteric inhibition of SHP2 phosphatase inhibits cancers driven by receptor tyrosine kinases. *Nature.* 2016;535(7610):148–52.
69. Tomas A, Futter CE, Eden ER. EGF receptor trafficking: consequences for signaling and cancer. *Trends Cell Biol.* 2014;24(1):26–34.
70. Yang JC, Schuler M, Popat S, Miura S, Heeke S, Park K, et al. Afatinib for the treatment of NSCLC harboring uncommon EGFR mutations: a database of 693 cases. *J Thorac Oncol.* 2020;15(5):803–15.
71. Cross DA, Ashton SE, Giorghiu S, Eberlein C, Nebhan CA, Spitzler PJ, et al. AZD9291, an irreversible EGFR TKI, overcomes T790M-mediated resistance to EGFR inhibitors in lung cancer. *Cancer Discov.* 2014;4(9):1046–61.
72. Jänne PA, Yang JC, Kim DW, Planchard D, Ohe Y, Ramalingam SS, et al. AZD9291 in EGFR inhibitor-resistant non-small-cell lung cancer. *N Engl J Med.* 2015;372(18):1689–99.
73. To C, Jang J, Chen T, Park E, Mushajiang M, De Clercq DJH, et al. Single and dual targeting of mutant EGFR with an allosteric inhibitor. *Cancer Discov.* 2019;9(7):926–43.
74. Lito P, Rosen N, Solit DB. Tumor adaptation and resistance to RAF inhibitors. *Nat Med.* 2013;19(11):1401–9.
75. Desai J, Gan H, Barrow C, Jameson M, Atkinson V, Haydon A, et al. Phase I, open-label, dose-escalation/dose-expansion study of Lifirafenib (BGB-283), an RAF family kinase inhibitor, in patients with solid tumors. *J Clin Oncol.* 2020;38(19):2140–50.
76. Fangusaro J, Onar-Thomas A, Young Poussaint T, Wu S, Ligon AH, Lindeman N, et al. Selumetinib in paediatric patients with BRAF-aberrant or neurofibromatosis type 1-associated recurrent, refractory, or progressive low-grade glioma: a multicentre, phase 2 trial. *Lancet Oncol.* 2019;20(7):1011–22.
77. Dombi E, Baldwin A, Marcus LJ, Fisher MJ, Weiss B, Kim A, et al. Activity of Selumetinib in Neurofibromatosis type 1-related plexiform Neurofibromas. *N Engl J Med.* 2016;375(26):2550–60.
78. Sullivan RJ, Infante JR, Janku F, Wong DJL, Sosman JA, Keedy V, et al. First-in-class ERK1/2 inhibitor Ulixertinib (BVD-523) in patients with MAPK mutant advanced solid tumors: results of a phase I dose-escalation and expansion study. *Cancer Discov.* 2018;8(2):184–95.
79. Verret B, Cortes J, Bachelot T, Andre F, Arnedos M. Efficacy of PI3K inhibitors in advanced breast cancer. *Ann Oncol.* 2019;30(Suppl\_10):x12–20.
80. Janku F, Yap TA, Meric-Bernstam F. Targeting the PI3K pathway in cancer: are we making headway? *Nat Rev Clin Oncol.* 2018;15(5):273–91.
81. Mateo J, Olmos D, Dumez H, Poondru S, Samberg NL, Barr S, et al. A first in man, dose-finding study of the mTORC1/mTORC2 inhibitor OSI-027 in patients with advanced solid malignancies. *Br J Cancer.* 2016;114(8):889–96.
82. Xu J, Yu X, Martin TC, Bansal A, Cheung K, Lubin A, et al. AKT degradation selectively inhibits the growth of PI3K/PTEN pathway-mutant cancers with wild-type KRAS and BRAF by destabilizing Aurora kinase B. *Cancer Discov.* 2021;11(12):3064–89.
83. Bond MJ, Chu L, Nalawansa DA, Li K, Crews CM. Targeted degradation of oncogenic KRAS(G12C) by VHL-recruiting PROTACs. *ACS Cent Sci.* 2020;6(8):1367–75.
84. Mukherji B, Chakraborty NG, Yamasaki S, Okino T, Yamase H, Sporn JR, et al. Induction of antigen-specific cytolytic T cells in situ in human melanoma by immunization with synthetic peptide-pulsed autologous antigen presenting cells. *Proc Natl Acad Sci U S A.* 1995;92(17):8078–82.
85. Hsu FJ, Benike C, Fagnoni F, Liles TM, Czerwinski D, Taidi B, et al. Vaccination of patients with B-cell lymphoma using autologous antigen-pulsed dendritic cells. *Nat Med.* 1996;2(1):52–8.
86. Nestle FO, Aljagic S, Gilliet M, Sun Y, Grabbe S, Dummer R, et al. Vaccination of melanoma patients with peptide- or tumor lysate-pulsed dendritic cells. *Nat Med.* 1998;4(3):328–32.
87. Jäger E, Ringhoffer M, Dienes HP, Arand M, Karbach J, Jäger D, et al. Granulocyte-macrophage-colony-stimulating factor enhances immune responses to melanoma-associated peptides in vivo. *Int J Cancer.* 1996;67(1):54–62.
88. Disis ML, Grabstein KH, Sleath PR, Cheever MA. Generation of immunity to the HER-2/neu oncogenic protein in patients with breast and ovarian cancer using a peptide-based vaccine. *Clin Cancer Res.* 1999;5(6):1289–97.
89. Sallusto F, Lanzavecchia A. Efficient presentation of soluble antigen by cultured human dendritic cells is maintained by granulocyte/macrophage colony-stimulating factor plus interleukin 4 and downregulated by tumor necrosis factor alpha. *J Exp Med.* 1994;179(4):1109–18.
90. Gjertsen MK, Buanes T, Rosseland AR, Bakka A, Gladhaug I, Søreide O, et al. Intradermal ras peptide vaccination with granulocyte-macrophage colony-stimulating factor as adjuvant: clinical and immunological responses in patients with pancreatic adenocarcinoma. *Int J Cancer.* 2001;92(3):441–50.
91. Abrams SI, Khleif SN, Bergmann-Leitner ES, Kantor JA, Chung Y, Hamilton JM, et al. Generation of stable CD4+ and CD8+ T cell lines from patients immunized with ras oncogene-derived peptides reflecting codon 12 mutations. *Cell Immunol.* 1997;182(2):137–51.
92. Chaft JE, Litvak A, Arcila ME, Patel P, D'Angelo SP, Krug LM, et al. Phase II study of the G1-4000 KRAS vaccine after curative therapy in patients with stage I-III lung adenocarcinoma harboring a KRAS G12C, G12D, or G12V mutation. *Clin Lung Cancer.* 2014;15(6):405–10.
93. Golan T, Khvalevsky EZ, Hubert A, Gabai RM, Hen N, Segal A, et al. RNAi therapy targeting KRAS in combination with chemotherapy for locally advanced pancreatic cancer patients. *Oncotarget.* 2015;6(27):24560–70.
94. Awad MM, Liu S, Rybkin II, Arbour KC, Dilly J, Zhu VW, et al. Acquired resistance to KRAS inhibition in Cancer. *N Engl J Med.* 2021;384(25):2382–93.
95. Koga T, Suda K, Fujino T, Ohara S, Hamada A, Nishino M, et al. KRAS secondary mutations that confer acquired resistance to KRAS G12C inhibitors, Sotorasib and Adagrasib, and overcoming strategies: insights from in vitro experiments. *J Thorac Oncol.* 2021;16(8):1321–32.

96. Tanaka N, Lin JJ, Li C, Ryan MB, Zhang J, Kiedrowski LA, et al. Clinical acquired resistance to KRAS inhibition through a novel KRAS switch-II pocket mutation and polyclonal alterations converging on RAS-MAPK reactivation. *Cancer Discov.* 2021;11(8):1913–22.
97. Akhavan NS, Biter AB, Hong DS. Mechanisms of resistance to KRAS-targeted therapy. *Cancer Discov.* 2021;11(6):1345–52.
98. Santos E, Nebreda AR. Structural and functional properties of ras proteins. *FASEB J.* 1989;3(10):2151–63.
99. Amodio V, Yaeger R, Arcella P, Cancelliere C, Lamba S, Lorenzato A, et al. EGFR blockade reverts resistance to KRAS inhibition in colorectal cancer. *Cancer Discov.* 2020;10(8):1129–39.
100. Prahallad A, Heynen GJJE, Germano G, Willems SM, Evers B, Vecchione L, et al. PTPN11 is a central node in intrinsic and acquired resistance to targeted cancer drugs. *Cell Rep.* 2015;12(12):1978–85.
101. Corcoran RB, Ebi H, Turke AB, Coffee EM, Nishino M, Cogdill AP, et al. EGFR-mediated re-activation of MAPK signaling contributes to insensitivity of BRAF mutant colorectal cancers to RAF inhibition with vemurafenib. *Cancer Discov.* 2012;2(3):227–35.
102. Saltz LB, Meropol NJ, Loehrer PJ, Needle MN, Kopit J, Mayer RJ. Phase II trial of cetuximab in patients with refractory colorectal cancer that expresses the epidermal growth factor receptor. *J Clin Oncol.* 2004;22(7):1201–8.
103. Van Cutsem E, Peeters M, Siena S, Humblet Y, Hendlisz A, Neyns B, et al. Open-label phase III trial of panitumumab plus best supportive care compared with best supportive care alone in patients with chemotherapy-refractory metastatic colorectal cancer. *J Clin Oncol.* 2007;25(13):1658–64.
104. Díaz-Serrano A, Gella P, Jiménez E, Zugazagoitia J, Paz-Ares Rodríguez L. Targeting EGFR in lung cancer: current standards and developments. *Drugs.* 2018;78(9):893–911.
105. Cheng DK, Oni TE, Thalappillil JS, Park Y, Ting H-C, Alagesan B, et al. Oncogenic KRAS engages an RSK1/NF1 pathway to inhibit wild-type RAS signaling in pancreatic cancer. *Proc Natl Acad Sci U S A.* 2021;118(21):e2016904118.
106. Grossmann KS, Rosário M, Birchmeier C, Birchmeier W. The tyrosine phosphatase Shp2 in development and cancer. *Adv Cancer Res.* 2010;106:53–89.
107. Mainardi S, Mulero-Sánchez A, Prahallad A, Germano G, Bosma A, Krimpenfort P, et al. SHP2 is required for growth of KRAS-mutant non-small-cell lung cancer in vivo. *Nat Med.* 2018;24(7):961–7.
108. Yaeger R, Yao Z, Hyman DM, Hechtman JF, Vakiani E, Zhao H, et al. Mechanisms of acquired resistance to BRAF V600E inhibition in colon cancers converge on RAF dimerization and are sensitive to its inhibition. *Cancer Res.* 2017;77(23):6513–23.
109. Misale S, Arena S, Lamba S, Siravegna G, Lallo A, Hobor S, et al. Blockade of EGFR and MEK intercepts heterogeneous mechanisms of acquired resistance to anti-EGFR therapies in colorectal cancer. *Sci Transl Med.* 2014;6(224):224ra226.
110. Misale S, Yaeger R, Hobor S, Scala E, Janakiraman M, Liska D, et al. Emergence of KRAS mutations and acquired resistance to anti-EGFR therapy in colorectal cancer. *Nature.* 2012;486(7404):532–6.
111. Diaz LA, Williams RT, Wu J, Kinde I, Hecht JR, Berlin J, et al. The molecular evolution of acquired resistance to targeted EGFR blockade in colorectal cancers. *Nature.* 2012;486(7404):537–40.
112. Suzuki S, Yonesaka K, Teramura T, Takehara T, Kato R, Sakai H, et al. KRAS inhibitor resistance in -amplified non-small cell lung cancer induced by RAS- and non-RAS-mediated cell signaling mechanisms. *Clin Cancer Res.* 2021;27(20):5697–707.
113. Schoenfeld AJ, Chan JM, Kubota D, Sato H, Rizvi H, Daneshbod Y, et al. Tumor analyses reveal squamous transformation and off-target alterations as early resistance mechanisms to first-line Osimertinib in -mutant lung cancer. *Clin Cancer Res.* 2020;26(11):2654–63.
114. Misale S, Fatherree JP, Cortez E, Li C, Bilton S, Timonina D, et al. KRAS G12C NSCLC models are sensitive to direct targeting of KRAS in combination with PI3K inhibition. *Clin Cancer Res.* 2019;25(2):796–807.
115. Lito P, Pratilas CA, Joseph EW, Tadi M, Halilovic E, Zubrowski M, et al. Relief of profound feedback inhibition of mitogenic signaling by RAF inhibitors attenuates their activity in BRAFV600E melanomas. *Cancer Cell.* 2012;22(5):668–82.
116. Ryan MB, de la Cruz Fece F, Phat S, Myers DT, Wong E, Shahzade HA, et al. Vertical pathway inhibition overcomes adaptive feedback resistance to KRAS inhibition. *Clin Cancer Res.* 2020;26(7):1633–43.
117. Lv P-C, Jiang A-Q, Zhang W-M, Zhu H-L. FAK inhibitors in cancer, a patent review. *Expert Opin Ther Pat.* 2018;28(2):139–45.
118. Sulzmaier FJ, Jean C, Schlaepfer DD. FAK in cancer: mechanistic findings and clinical applications. *Nat Rev Cancer.* 2014;14(9):598–610.
119. Tang K-J, Constanzo JD, Venkateswaran N, Melegari M, Ilcheva M, Morales JC, et al. Focal adhesion kinase regulates the DNA damage response and its inhibition radiosensitizes mutant KRAS lung cancer. *Clin Cancer Res.* 2016;22(23):5851–63.
120. Zhou Y, Dang J, Chang K-Y, Yau E, Aza-Blanc P, Moscat J, et al. miR-1298 inhibits mutant KRAS-driven tumor growth by repressing FAK and LAMB3. *Cancer Res.* 2016;76(19):5777–87.
121. Konstantinidou G, Ramadori G, Torti F, Kangasniemi K, Ramirez RE, Cai Y, et al. RHOA-FAK is a required signaling axis for the maintenance of KRAS-driven lung adenocarcinomas. *Cancer Discov.* 2013;3(4):444–57.
122. Zhang B, Zhang Y, Zhang J, Liu P, Jiao B, Wang Z, et al. Focal adhesion kinase (FAK) inhibition synergizes with KRAS G12C inhibitors in treating cancer through the regulation of the FAK-YAP signaling. *Adv Sci (Weinh).* 2021;8(16):e2100250.
123. Diaz Osterman CJ, Ozmadenci D, Kleinschmidt EG, Taylor KN, Barrie AM, Jiang S, et al. FAK activity sustains intrinsic and acquired ovarian cancer resistance to platinum chemotherapy. *Elife.* 2019;8:e47327.
124. Frame MC, Serrels A. FAK to the rescue: activated stroma promotes a “safe haven” for BRAF-mutant melanoma cells by inducing FAK signaling. *Cancer Cell.* 2015;27(4):429–31.
125. Jiang H, Hegde S, Knolhoff BL, Zhu Y, Herndon JM, Meyer MA, et al. Targeting focal adhesion kinase renders pancreatic cancers responsive to checkpoint immunotherapy. *Nat Med.* 2016;22(8):851–60.
126. Serrels A, Lund T, Serrels B, Byron A, McPherson RC, von Kriegsheim A, et al. Nuclear FAK controls chemokine transcription, Tregs, and evasion of anti-tumor immunity. *Cell.* 2015;163(1):160–73.
127. Adachi Y, Ito K, Hayashi Y, Kimura R, Tan TZ, Yamaguchi R, et al. Epithelial-to-mesenchymal transition is a cause of both intrinsic and acquired resistance to KRAS G12C inhibitor in KRAS G12C-mutant non-small cell lung cancer. *Clin Cancer Res.* 2020;26(22):5962–73.
128. Singh A, Greninger P, Rhodes D, Koopman L, Violette S, Bardeesy N, et al. A gene expression signature associated with “K-Ras addiction” reveals regulators of EMT and tumor cell survival. *Cancer Cell.* 2009;15(6):489–500.
129. Sun C, Hobor S, Bertotti A, Zecchin D, Huang S, Galimi F, et al. Intrinsic resistance to MEK inhibition in KRAS mutant lung and colon cancer through transcriptional induction of ERBB3. *Cell Rep.* 2014;7(1):86–93.
130. Kitai H, Ebi H, Tomida S, Floros KV, Kotani H, Adachi Y, et al. Epithelial-to-mesenchymal transition defines feedback activation of receptor tyrosine kinase signaling induced by MEK inhibition in KRAS-mutant lung cancer. *Cancer Discov.* 2016;6(7):754–69.
131. Solanki HS, Welsh EA, Fang B, Izumi V, Darville L, Stone B, et al. Cell type-specific adaptive signaling responses to KRAS inhibition. *Clin Cancer Res.* 2021;27(9):2533–48.
132. Ebi H, Corcoran RB, Singh A, Chen Z, Song Y, Lifshits E, et al. Receptor tyrosine kinases exert dominant control over PI3K signaling in human KRAS mutant colorectal cancers. *J Clin Invest.* 2011;121(11):4311–21.
133. Molina-Arcas M, Hancock DC, Sheridan C, Kumar MS, Downward J. Coordinate direct input of both KRAS and IGF1 receptor to activation of PI3 kinase in KRAS-mutant lung cancer. *Cancer Discov.* 2013;3(5):548–63.
134. Yuan TL, McCormick F. Killing tumors by keeping ras and PI3' kinase apart. *Cancer Cell.* 2013;24(5):562–3.
135. Myers MG, Mendez R, Shi P, Pierce JH, Rhoads R, White MF. The COOH-terminal tyrosine phosphorylation sites on IRS-1 bind SHP-2 and negatively regulate insulin signaling. *J Biol Chem.* 1998;273(41):26908–14.
136. Byers LA, Diao L, Wang J, Sainitigny P, Girard L, Peyton M, et al. An epithelial-mesenchymal transition gene signature predicts resistance to EGFR and PI3K inhibitors and identifies Axl as a therapeutic target for overcoming EGFR inhibitor resistance. *Clin Cancer Res.* 2013;19(1):279–90.
137. Raof S, Mulford IJ, Frisco-Cabanos H, Nangia V, Timonina D, Labrot E, et al. Targeting FGFR overcomes EMT-mediated resistance in EGFR mutant non-small cell lung cancer. *Oncogene.* 2019;38(37):6399–413.
138. Salt MB, Bandyopadhyay S, McCormick F. Epithelial-to-mesenchymal transition rewires the molecular path to PI3K-dependent proliferation. *Cancer Discov.* 2014;4(2):186–99.
139. Guix M, Faber AC, Wang SE, Olivares MG, Song Y, Qu S, et al. Acquired resistance to EGFR tyrosine kinase inhibitors in cancer cells is mediated by loss of IGF-binding proteins. *J Clin Invest.* 2008;118(7):2609–19.

140. Hou S, Han X, Ji H. Squamous transition of lung adenocarcinoma and drug resistance. *Trends Cancer*. 2016;2(9):463–6.
141. Sequist LV, Waltman BA, Dias-Santagata D, Digumarthy S, Turke AB, Fidias P, et al. Genotypic and histological evolution of lung cancers acquiring resistance to EGFR inhibitors. *Sci Transl Med*. 2011;3(75):75ra26.
142. Shukuya T, Takahashi T, Kaira R, Ono A, Nakamura Y, Tsuya A, et al. Efficacy of gefitinib for non-adenocarcinoma non-small-cell lung cancer patients harboring epidermal growth factor receptor mutations: a pooled analysis of published reports. *Cancer Sci*. 2011;102(5):1032–7.
143. Quintanal-Villalonga Á, Chan JM, Yu HA, Pe'er D, Sawyers CL, Sen T, et al. Lineage plasticity in cancer: a shared pathway of therapeutic resistance. *Nat Rev Clin Oncol*. 2020;17(6):360–71.
144. Zehir A, Benayed R, Shah RH, Syed A, Middha S, Kim HR, et al. Mutational landscape of metastatic cancer revealed from prospective clinical sequencing of 10,000 patients. *Nat Med*. 2017;23(6):703–13.
145. Zhao R, Choi BY, Lee M-H, Bode AM, Dong Z. Implications of genetic and epigenetic alterations of CDKN2A (p16<sup>INK4a</sup>) in cancer. *EBioMedicine*. 2016;8:30–9.
146. Hou P, Kapoor A, Zhang Q, Li J, Wu C-J, Li J, et al. Tumor microenvironment remodeling enables bypass of oncogenic KRAS dependency in pancreatic Cancer. *Cancer Discov*. 2020;10(7):1058–77.
147. Carow B, Rottenberg ME. SOCS3, a major regulator of infection and inflammation. *Front Immunol*. 2014;5:58.
148. Ahmed S, Bradshaw A-D, Gera S, Dewan MZ, Xu R. The TGF- $\beta$ /Smad4 signaling pathway in pancreatic carcinogenesis and its clinical significance. *J Clin Med*. 2017;6(1):5.
149. Tsai YS, Woodcock MG, Azam SH, Thorne LB, Kanchi KL, Parker JS, et al. Rapid idiosyncratic mechanisms of clinical resistance to KRAS G12C inhibition. *J Clin Invest*. 2022;132(4):e155523.
150. Skoulidis F, Goldberg ME, Greenawalt DM, Hellmann MD, Awad MM, Gainor JF, et al. Mutations and PD-1 inhibitor resistance in -mutant lung adenocarcinoma. *Cancer Discov*. 2018;8(7):822–35.
151. Yao Z, Yaeger R, Rodrik-Outmezguine VS, Tao A, Torres NM, Chang MT, et al. Tumours with class 3 BRAF mutants are sensitive to the inhibition of activated RAS. *Nature*. 2017;548(7666):234–8.
152. Vetter IR, Wittinghofer A. The guanine nucleotide-binding switch in three dimensions. *Science*. 2001;294(5545):1299–304.
153. Johnson CW, Lin Y-J, Reid D, Parker J, Pavlopoulos S, Dischinger P, et al. Isoform-Specific Destabilization of the Active Site Reveals a Molecular Mechanism of Intrinsic Activation of KRas G13D. *Cell Rep*. 2019;28(6):1538–50.
154. Moghadamchargari Z, Shirzadeh M, Liu C, Schrecke S, Packianathan C, Russell DH, et al. Molecular assemblies of the catalytic domain of SOS with KRas and oncogenic mutants. *Proc Natl Acad Sci U S A*. 2021;118(12):e2022403118.
155. Fedele C, Li S, Teng KW, Foster CJR, Peng D, Ran H, et al. SHP2 inhibition diminishes KRASG12C cycling and promotes tumor microenvironment remodeling. *J Exp Med*. 2021;218(1):e20201414.

## Publisher's Note

Springer Nature remains neutral with regard to jurisdictional claims in published maps and institutional affiliations.

Ready to submit your research? Choose BMC and benefit from:

- fast, convenient online submission
- thorough peer review by experienced researchers in your field
- rapid publication on acceptance
- support for research data, including large and complex data types
- gold Open Access which fosters wider collaboration and increased citations
- maximum visibility for your research: over 100M website views per year

At BMC, research is always in progress.

Learn more [biomedcentral.com/submissions](https://biomedcentral.com/submissions)

