

Relationships of interleukin-10 with the regulatory T cell ratio and prognosis of cervical cancer patients

Beibei Wang,^I Haoyu Wang,^{II} Peiquan Li,^{III} Liangliang Wang,^I Hongli Liu,^I Jingbo Liu,^I Lihua Wang^{I,*}

^IDepartment of gynecologic oncology, the First Affiliated Hospital of Bengbu Medical College, Anhui, China. ^{II}Department of orthopaedics, the Third People's Hospital of Bengbu, Anhui, China. ^{III}Department of gynecologic oncology, Renji Affiliated Hospital of Shanghai Jiao Tong University, Shanghai, China

Wang B, Wang H, Li P, Wang LL, Liu H, Liu J, et al. Relationships of interleukin-10 with the regulatory T cell ratio and prognosis of cervical cancer patients. *Clinics*. 2018;73:e679

*Corresponding author. E-mail: lihuawanglh@163.com

OBJECTIVE: This study investigated serum interleukin-10 (IL-10) levels, changes in peripheral blood CD4 + CD25 + regulatory T cell (PBCDT) ratios, and the prognosis of cervical cancer (CC) patients.

METHODS: Seventy patients with CC composed the observation group, and 70 healthy subjects composed the control group. The PBCDT ratios in the CC patients and healthy subjects were calculated. Serum IL-10 levels were detected with a double antibody sandwich enzyme-linked immunosorbent assay (ELISA).

RESULTS: The PBCDT ratio was higher in the patients with active CC [$12.16 \pm 2.41\%$] than in the control subjects [$6.34 \pm 1.05\%$]. Serum IL-10 levels were higher in the patients with CC [384 ± 106 pg/ml] than in the control subjects [104 ± 50 pg/ml]; the differences in both PBCDT ratio and IL-10 level were statistically significant ($p < 0.01$). Serum IL-10 levels were positively correlated with PBCDT ratios ($r = 0.375$, $p < 0.05$). The 5-year patient survival rate was significantly higher in the low serum IL-10 group (64.2%) than in the high serum IL-10 group (42.8%, $p = 0.012$).

CONCLUSIONS: PBCDT ratios and serum IL-10 levels are related to CC activity. These factors are reciprocally related and influence one another, and both are involved in the development and progression of CC. Low IL-10 expression is beneficial regarding the survival of patients with CC.

KEYWORDS: Interleukin-10; Regulatory T Cells; Cervical Cancer; ELISA; Prognosis.

INTRODUCTION

In the 21st century, there is a high incidence of cancer in women. As one common malignant tumor in women, cervical cancer (CC) ranks third in terms of incidence among all malignant tumor types (1). In many developed countries, cancer is one of the major causes of death in women. Approximately 130,000 people are newly diagnosed with CC in China each year, accounting for approximately 25% of all of the CC patients in the world (2). CC is a long-term, reversible disease. If treatment is provided in the early stages of CC, patients have a 5-year survival rate of up to 90% (3). In many countries, the incidence of CC has significantly decreased. In developed countries, the mortality of CC has dropped significantly by more than 50%, mainly due to the diagnosis and treatment of early-stage CC (4). In recent

years, the human papillomavirus (HPV) infection rate in China has increased every year, mainly due to unprotected sexual intercourse and changes in the social lives of patients. As a result, the incidence of CC is also rising (5). According to the statistics, the global age of onset of CC has decreased from 60 years in the 1950s to 50 years in the 1990s. Therefore, the treatment and prevention of CC are public health problems (6).

A previous study (7) found that a large number of regulatory T (Treg) cells, mainly CD4 + CD25 + Treg cells, infiltrate the tissue around tumors. It was reported that the CD4 + CD25 + Treg cell population is generally increased in the peripheral blood and tumor tissue of patients with stomach cancer, lung cancer, liver cancer, colon cancer, melanoma, and other types of cancer. The CD4 + CD25 + Treg cell count is negatively correlated with tumor development and prognosis (8-12). CD4 + CD25 + Treg cells have been proposed to maintain the body's immune tolerance and prevent an immune response to homologous tumor cells, thereby playing a crucial role in tumor development. As an important member of the interleukin (IL) family, IL-10 is a multifunctional cytokine that regulates cell growth and differentiation and participates in inflammatory and immune responses (13). CD4 + CD25 + Treg cells and CD4 + CD25 + effector T (Teff) cells jointly regulate the secretion of IL-10, TGF- β , and other factors and play immunosuppressive roles

Copyright © 2018 CLINICS – This is an Open Access article distributed under the terms of the Creative Commons License (<http://creativecommons.org/licenses/by/4.0/>) which permits unrestricted use, distribution, and reproduction in any medium or format, provided the original work is properly cited.

No potential conflict of interest was reported.

Received for publication on March 2, 2018. **Accepted for publication on** July 3, 2018

DOI: 10.6061/clinics/2018/e679



by binding with and secreting IL-10 (14). Therefore, this study investigated the changes in human peripheral blood CD4+CD25+ Treg cell ratios and serum IL-10 levels and their relationships with CC patient prognosis.

MATERIALS AND METHODS

Clinical information

Seventy patients with CC, confirmed by pathologists via biopsy, in our hospital were assigned to the observation group. Their characteristics were as follows: age: 36-84 years; mean age: 50.5 ± 11.61 years; clinical staging: stage I: n=9, stage II: n=45, and stage III: n=16; and histological type: adenocarcinoma: n=3, squamous carcinoma: n=66, and adenosquamous carcinoma: n=1. Seventy healthy subjects at the physical examination center of our hospital were assigned to the control group. Their characteristics were as follows: age: 35-70 years; and mean age: 48.8 ± 9.5 years. The study was approved by the ethics committee of our hospital. All of the subjects or their families signed the informed consent form. No significant differences in gender, age, or any other clinical characteristics were found between the two groups (Table 1).

The inclusion criteria were as follows: confirmed diagnosis of CC; no blood relationship with other study patients; no liver cirrhosis, autoimmune disease, respiratory disease, depression, hypertension, or diabetes; no serious infections; and no recent blood transfusions.

The exclusion criteria were as follows: course of disease <1 year; recent drug treatment; other genetic diseases; no history of radiotherapy or chemotherapy; autism; memory disorders; hearing disorders; noncompliance with follow-up; or incomplete clinical information.

Reagents

A flow cytometry Treg Cell Assay kit (CD4-FITC, CD25-APC) was obtained from BD, USA. An automatic microplate reader was obtained from Thermo Fisher Scientific, USA. An enzyme-linked immunosorbent assay (ELISA) kit (IL-10, HPV) was purchased from R&D Systems, USA.

Sample collection

Venous blood (3-5 mL) was collected in heparinized anticoagulant tubes from subjects in the control and observation groups. All of the subjects underwent gynecological examinations. Samples were collected by trained clinicians. A small specialized brush was gently rotated 3-5 times in the cervical canal to collect exfoliated cells for HPV testing.

Flow cytometry

A total of 50 μ L of peripheral blood was added to tubes containing 5 μ L of the CD4+, CD25+, or CD4+CD25+ antibody mixtures. The tubes were incubated in the dark for 15 min, and then, 200 μ L of red blood cell lysis buffer was added. After the reaction was completed, 1 mL of PBS was added, and the tubes were centrifuged. The supernatant was discarded, 0.5 mL of PBS buffer was added, and the samples were immediately used for the flow cytometry assay.

Enzyme-linked immunosorbent assay

The coating antigen was diluted in the coating buffer to the required concentration of HBsAg, and 200 μ L of the solution was added to each well. The samples were incubated overnight at 4°C and then washed once with double distilled H₂O. A blocking solution was added to each well. The collected peripheral blood was centrifuged at

Table 1 - Patient clinical information.

| Group | n | Observation group | Control group | F | p |
|-----------------------------|------------|-------------------|---------------|-------|-------|
| Age | | | | | |
| >55 | 79 | 44 (55.69) | 35 (44.31) | 0.511 | 0.695 |
| ≤55 | 61 | 26 (42.62) | 35 (57.83) | | |
| Clinical stage | | | | | |
| I | | 9 (12.85) | | | |
| II | | 45 (64.28) | | | |
| III | | 16 (22.87) | | | |
| Pathological classification | | | | | |
| Adenocarcinoma | 3 (4.28) | | | | |
| Squamous cell carcinoma | 66 (94.28) | | | | |
| Squamous adenocarcinoma | 1 (1.44) | | | | |
| Smoking history | | | | | |
| Yes | 44 | 24 (54.54) | 20 (45.46) | 1.431 | 0.084 |
| No | 96 | 59 (61.45) | 37 (38.55) | | |
| Exercise habit | | | | | |
| Yes | 80 | 44 (55.00) | 36 (45.00) | 0.775 | 0.354 |
| No | 60 | 29 (48.33) | 31 (51.67) | | |
| Home area | | | | | |
| Urban | 88 | 51 (57.95) | 37 (42.05) | 0.947 | 0.284 |
| Rural | 52 | 29 (55.76) | 23 (44.23) | | |
| Degree of education | | | | | |
| <High school | 100 | 50 (50.00) | 50 (50.00) | 0.797 | 0.387 |
| ≥High school | 40 | 24 (60.00) | 16 (40.00) | | |
| Marital status | | | | | |
| Married | 131 | 66 (50.39) | 65 (49.61) | 0.647 | 0.667 |
| Unmarried | 6 | 3 (50.00) | 3 (50.00) | | |
| Widowed | 3 | 2 (66.67) | 1 (33.33) | | |
| Dietary preference | | | | | |
| Mild | 85 | 47 (55.29) | 38 (44.71) | 0.856 | 0.394 |
| Spicy | 55 | 29 (47.27) | 26 (52.73) | | |



Table 2 - HPV infection.

| Group | n | HPV infection | | Positive rate (%) | χ^2 | p |
|-------------------|----|---------------|----------|-------------------|----------|-------|
| | | Positive | Negative | | | |
| Observation group | 70 | 67 | 3 | 95.7% | 42.167 | <0.05 |
| Control group | 70 | 8 | 62 | 11.4% | | |

3000 r/min prior to addition to the plate. The enzyme-labeled antibody was added, and the solution was mixed prior to sealing the plate. The plate was washed 5 times for 30 s to 1 min each with a prepared cleaning solution. The substrate (100 μ L) was added to each well to start the reactions, and the color was monitored. Then, 0.05 mL of 2 M sulfuric acid was added, and the color developed within 15 min.

Follow-up

Follow-up of the 70 patients was conducted at the following intervals: monthly for 3 months after surgery, every 6 months for the first year, and then annually thereafter. Patients were monitored for a total of 5 years.

Statistical methods

SPSS 22.0 statistical software (Beijing Strong-Vinda Information Technology Co., Ltd) was used for the statistical analysis of the collected data. GraphPad Prism 5 was used to generate figures with the analyzed data. Survival analysis was performed by the log-rank test. Continuous variables are presented as the mean \pm SD. Comparisons between groups were performed with a t test. HPV rates in the two groups were compared using the chi-square test. Comparisons among groups were performed with a single factor analysis. Multivariate correlations were analyzed with Pearson correlation analysis.

RESULTS

HPV infection

HPV tests were performed for the 140 subjects. Among the 70 patients with CC, 67 were HPV positive, for an infection rate of 95.7%. Among the 70 subjects in the control group, 8 were HPV positive, for an infection rate of 11.4%. The HPV infection rate differed significantly between the two groups ($\chi^2=42.167$, $p<0.05$), as shown in Table 2.

Serum IL-10 levels in CC patients and control subjects

The serum IL-10 tests revealed serum IL-10 levels of 104 ± 50 pg/mL in the control group and 384 ± 106 pg/mL in the CC group. A significant difference was found between the two groups ($p<0.05$), as shown in Figure 1.

Peripheral CD4 + CD25 + Treg cell ratios

The peripheral blood CD4+CD25+ Treg cells (PBCDTs) of patients were analyzed by flow cytometry. There was a significant difference in the percentage of PBCDTs in the total CD4+ lymphocyte population between patients with CC (12.16 ± 2.41) and control subjects (6.34 ± 1.05 , $t=5.684$, $p<0.05$), as shown in Figure 2.

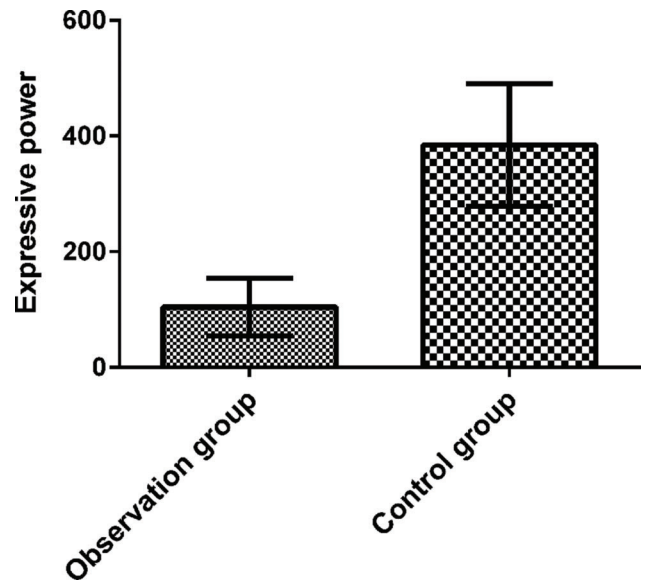


Figure 1 - CC patient and control subject serum IL-10 levels. IL-10 levels were higher in CC patients than in control subjects ($p<0.05$).

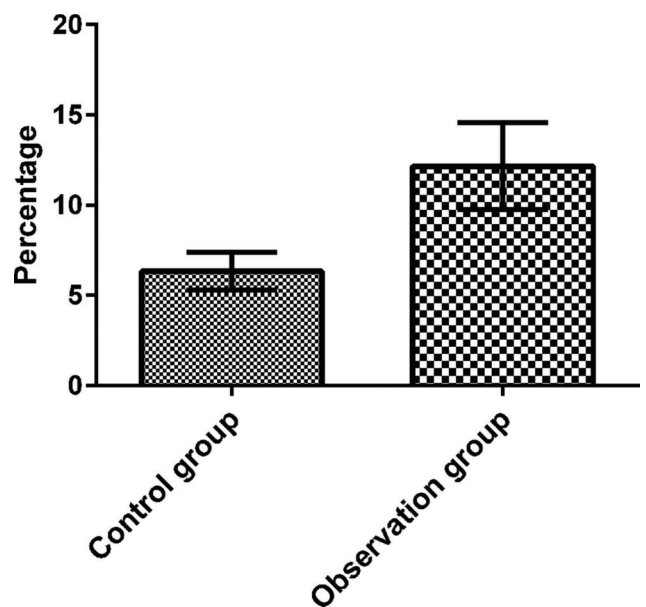


Figure 2 - The PBCDT proportions in the observation and control groups. The PBCDT proportion was determined by flow cytometry. The results show that the PBCDT proportion in the peripheral blood was significantly higher in the observation group than in the control group ($t=5.684$, $p<0.05$).

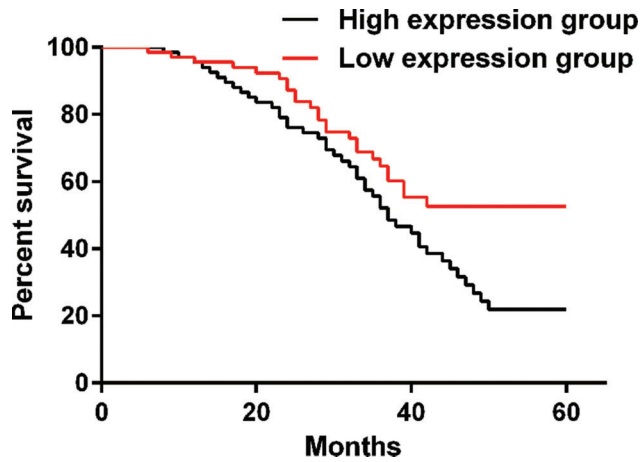


Figure 3 - Kaplan-Meier curve. The Kaplan-Meier curve shows that the 5-year patient survival rate was 64.2% in the low IL-10 group and 42.8% in the high IL-10 group. A significant difference was observed between the two groups ($p=0.012$).

Relationship between the PBCDT percentage and IL-10 in patients with CC

The relationship between the PBCDT percentage and serum IL-10 levels in the 70 patients with CC was determined. The PBCDT percentage was positively correlated with IL-10 expression ($r=0.375, p<0.05$). IL-10 levels increased with rising PBCDT levels.

Follow-up

Patients were divided into a high IL-10 group and a low IL-10 group according to the median IL-10 level for follow-up. The 5-year patient survival rate was 64.2% in the low IL-10 group and 42.8% in the high IL-10 group. A significant difference was observed between the two groups ($p=0.012$), as shown in Figure 3.

DISCUSSION

PBCDTs are a class of negatively regulated immune cells that are characteristically identified by the surface expression of CD4 and CD25. T cells that are positive for CD4 and CD25 are mainly produced in the thymus and may also be produced during an immune response to a peripheral tolerogen through induction by TGF- β , $\alpha\beta$ T cell receptor signals, and cytokines. CD4 and CD25 play a crucial role in immune control (15-17). It has been reported (18,19) that PBCDTs play an important role in the tumor microenvironment, where they inhibit the T cell population involved in the immune response by affecting cellular activity, thereby exerting important immunosuppressive function. Treg cells are important members of the CD4+ T lymphocyte population in the human body; they can regulate immune tolerance by inhibiting the activation of the immune system. A previous article (18) proposed that Treg cells can dynamically regulate the immune system to achieve balance in healthy humans, thereby inhibiting the expansion of the immune response and the development of autoimmunity.

A previous study proposed that Treg cells can be divided into intrinsic Treg cells and induced Treg cells (20). Intrinsic Treg cells exert inhibitory effects through direct contact,

while induced Treg cells have inhibitory effects through the secretion of inhibitory factors, such as IL-10 and TGF β . IL-10 is an important immunoregulatory factor with inhibitory effects in a variety of cells; its main function is to prevent tissue damage caused by specific and nonspecific immune responses. IL-10 is mainly produced following the induction of IL-10 transcription, synthesis, and secretion by bacterial lipopolysaccharide and catecholamines, but it has been reported previously that Treg cells can also produce IL-10 (21), and other studies have found that Th17 and Th22 cells produce IL-10 (22,23).

In this study, the HPV-positive rate, the PBCDT count, and serum IL-10 levels were examined in 140 subjects. The HPV-positive rate was higher in the observation group than in the control group, demonstrating that HPV plays an important role in the pathogenesis of CC. A higher HPV viral load is associated with a higher probability of the progression of cervical intraepithelial neoplasia lesions to CC (24). The PBCDT count was higher in the observation group than in the control group. It has been reported that an increase in the human Treg cell count inhibits CD4+ T cell activation and proliferation and cytokine secretion during tumorigenesis, resulting in the generation of an immune response; these data indicate that elevated PBCDT populations can be used as a diagnostic indicator in CC (25). An examination of serum IL-10 levels revealed a significant difference between the control group and the observation group, suggesting that IL-10 is an important negative regulator of the tumor immune microenvironment and can promote tumor growth and metastasis. Our correlation analysis revealed a positive correlation between the PBCDT percentage and IL-10, which proved that Treg cells can inhibit tumorigenesis through the secretion of inhibitory factors. In the last stage of the study, patients were followed up for five years and stratified according to their serum IL-10 levels. The five-year survival rate of the patients with high IL-10 expression was lower than that of those with low IL-10 expression. High tumor IL-10 expression can be used as a predictor of tumor stage. In recent years, an increasing number of reports have demonstrated that Treg cells are involved in the formation of the tumor microenvironment in CC patients and in the development and metastasis of CC, which proves that Treg cells can be used for the clinical diagnosis of CC.

There are some limitations of this study. This study did not include an in-depth analysis of the mechanisms of IL-10 and Treg cells in CC. It is unknown whether the small sample size and regional differences of the patients introduced bias into our results. In future studies, we will increase the sample size and investigate the mechanisms underlying the roles of IL-10 and Treg cells in CC, thereby providing new methods and ideas for the development of antitumor immunotherapy.

In summary, this study demonstrated that the PBCDT ratio and serum IL-10 levels are related to CC activity. These factors mutually influence each other and are involved in the development and progression of CC.

AUTHOR CONTRIBUTIONS

Wang B and Wang L conceived the study and designed the experiments. Wang H, Li P and Wang LL contributed to the data collection. Liu H and Liu J performed the data analysis and interpreted the results. Wang B wrote the manuscript. Wang L contributed to the critical revision of article. All authors read and approved the final version of the manuscript.



REFERENCES

- Kupferschmidt K. EPIDEMIOLOGY. High-profile cancer reviews trigger controversy. *Science*. 2016;352(6293):1504-5, <http://dx.doi.org/10.1126/science.352.6293.1504>.
- Chen W, Zheng R, Zeng H, Zhang S, He J. Annual report on status of cancer in China, 2011. *Chin J Cancer Res*. 2015;27(1):2-12, <http://dx.doi.org/10.1186/s40880-015-0001-2>.
- Chen W. Cancer statistics: updated cancer burden in China. *Chin J Cancer Res*. 2015;27(1):1, <http://dx.doi.org/10.3978/j.issn.1000-9604.2015.02.07>.
- Jung KW, Won YJ, Kong HJ, Oh CM, Cho H, Lee DH, et al. Cancer statistics in Korea: incidence, mortality, survival, and prevalence in 2012. *Cancer Res Treat*. 2015;47(2):127-41, <http://dx.doi.org/10.4143/crt.2015.060>
- Kohler BA, Sherman RL, Howlader N, Jemal A, Ryerson AB, Henry KA, et al. Annual Report to the Nation on the Status of Cancer, 1975-2011, Featuring Incidence of Breast Cancer Subtypes by Race/Ethnicity, Poverty, and State. *J Natl Cancer Inst*. 2015;107(6):djv048, <http://dx.doi.org/10.1093/jnci/djv048>.
- Stokley S, Jeyarajah J, Yankey D, Cano M, Gee J, Roark J, et al. Human Papillomavirus Vaccination Coverage Among Adolescents, 2007-2013, and Postlicensure Vaccine Safety Monitoring, 2006-2014-United States. *MMWR Morb Mortal Wkly Rep*. 2014;63(29):620-4.
- Pircher A, Gernerth G, Amann A, Reinold S, Popper H, Gachter A, et al. Neoadjuvant chemo-immunotherapy modifies CD4(+)CD25(+) regulatory T cells (Treg) in non-small cell lung cancer (NSCLC) patients. *Lung Cancer*. 2014;85(1):81-7, <http://dx.doi.org/10.1016/j.lungcan.2014.04.001>.
- Chen C, Chen D, Zhang Y, Chen Z, Zhu W, Zhang B, et al. Changes of CD4+CD25+FOXP3+ and CD8+CD28- regulatory T cells in non-small cell lung cancer patients undergoing surgery. *Int Immunopharmacol*. 2014;18(2):255-61, <http://dx.doi.org/10.1016/j.intimp.2013.12.004>.
- Chen SL, Cai SR, Zhang XH, Peng JJ, Li WF, Zhai ET, et al. Expression of CD4+CD25+ regulatory T cells and Foxp3 in peripheral blood of patients with gastric carcinoma. *J Biol Regul Homeost Agents*. 2016;30(1):197-204.
- Wang B, Li B, Dai Z, Ren S, Bai M, Wang Z, et al. Low-dose splenic radiation inhibits liver tumor development of rats through functional changes in CD4+CD25+Treg cells. *Int J Biochem Cell Biol*. 2014;55:98-108, <http://dx.doi.org/10.1016/j.biocel.2014.08.014>.
- Terrazas LI, Olguin E, Medina-Andrade I, Ledesma-Soto Y, Saavedra R, Molina E, et al. Depletion of Treg cells induces an increased activation of T-CD4(+) and T-CD8(+) cells during colorectal cancer. *J Immunol*. 2017;198(Suppl 1) 196.4
- Plitas G, Konopacki C, Wu K, Paula B, Morrow M, Rudensky A. Preferential expression of the chemokine receptor 8 (CCR8) on regulatory T cells (Treg) infiltrating human breast cancers represents a novel immunotherapeutic target. *Cancer Research* 2016;76(4 Suppl):Abstract nr P4-04-11, <http://dx.doi.org/10.1158/1538-7445.SABCS15-P4-04-11>.
- Kindlund B, Sjoling A, Yakkala C, Adamsson J, Janzon A, Hansson LE, et al. CD4(+) regulatory T cells in gastric cancer mucosa are proliferating and express high levels of IL-10 but little TGF- β . *Gastric Cancer*. 2017;20(1):116-25, <http://dx.doi.org/10.1007/s10120-015-0591-z>.
- Walker MR, Kaspruwicz DJ, Gersuk VH, Benard A, Van Landeghen M, Buckner JH, et al. Induction of FoxP3 and acquisition of T regulatory activity by stimulated human CD4+CD25- T cells. *J Clin Invest*. 2003;112(9):1437-43, <http://dx.doi.org/10.1172/JCI19441>.
- Jiang N, Li M, Zeng X. Correlation of Th17 cells and CD4+CD25+ regulatory T cells with clinical parameters in patients with systemic sclerosis. *Chin Med J*. 2014;127(20):3557-61.
- Sang LX, Chang B, Zhu JF, Yang FL, Li Y, Jiang XF, et al. Sodium selenite ameliorates dextran sulfate sodium-induced chronic colitis in mice by decreasing Th1, Th17, and gamma delta T and increasing CD4(+)CD25(+) regulatory T-cell responses. *World J Gastroenterol*. 2017;23(21):3850-63, <http://dx.doi.org/10.3748/wjg.v23.i21.3850>.
- Liu M, Xu LJ, Wu JX. Changes of circulating CD4(+)CD25(+)CD127 (low) regulatory T cells in patients with acute coronary syndrome and its significance. *Genet Mol Res*. 2015;14(4):15930-6, <http://dx.doi.org/10.4238/2015.December.7.4>
- Nishikawa H, Sakaguchi S. Regulatory T cells in cancer immunotherapy. *Curr Opin Immunol*. 2014;27:1-7, <http://dx.doi.org/10.1016/j.coi.2013.12.005>.
- Whiteside TL. Regulatory T cell subsets in human cancer: are they regulating for or against tumor progression? *Cancer Immunol Immunother*. 2014;63(1):67-72, <http://dx.doi.org/10.1007/s00262-013-1490-y>.
- Quentin J, Vicente R, Martire D, Mausset-Bonnefont AL, Jorgensen C, Louis-Plence P. Inducible IL-10 Secreting Cd49b(+) Treg Cells as Cell Based-Therapy for Rheumatoid Arthritis. *Ann Rheum Dis*. 2014;73(Suppl 1):A8.26, <http://dx.doi.org/10.1136/annrheumdis-2013-205124.200>.
- Verhagen J, Gabrysova L, Shepard ER, Wraith DC. Ctl α 4 modulates the differentiation of inducible Foxp3+ Treg cells but IL-10 mediates their function in experimental autoimmune encephalomyelitis. *PLoS One*. 2014;9(9):e108023, <http://dx.doi.org/10.1371/journal.pone.0108023>.
- Guggino G, Giardina A, Ferrante A, Giardina G, Schinocca C, Sireci G, et al. The in vitro addition of methotrexate and/or methylprednisolone determines peripheral reduction in Th17 and expansion of conventional Treg and of IL-10 producing Th17 lymphocytes in patients with early rheumatoid arthritis. *Rheumatol Int*. 2015;35(1):171-5, <http://dx.doi.org/10.1007/s00296-014-3030-2>.
- Zhang N, Pan HF, Ye DQ. Th22 in inflammatory and autoimmune disease: prospects for therapeutic intervention. *Mol Cell Biochem*. 2011;353(1-2):41-6, <http://dx.doi.org/10.1007/s11010-011-0772-y>.
- Huh WK, Ault KA, Chelmsow D, Davey DD, Goulart RA, Garcia FA, et al. Use of primary high-risk human papillomavirus testing for cervical cancer screening: interim clinical guidance. *Gynecol Oncol*. 2015;136(2):178-82, <http://dx.doi.org/10.1016/j.ygyno.2014.12.022>.
- Weaver CT, Harrington LE, Mangan PR, Gavrieli M, Murphy KM. Th17: an effector CD4 T cell lineage with regulatory T cell ties. *Immunity*. 2006;24(6):677-88, <http://dx.doi.org/10.1016/j.immuni.2006.06.002>.