



Impact of Impaired Pancreatic β -Cell Function on Cardiovascular Prognosis in Heart Failure Patients Without Diabetes Mellitus

Taro Narumi, MD, PhD; Tetsu Watanabe, MD, PhD; Shigehiko Kato, MD, PhD; Harutoshi Tamura, MD, PhD; Satoshi Nishiyama, MD, PhD; Hiroki Takahashi, MD, PhD; Takanori Arimoto, MD, PhD; Tetsuro Shishido, MD, PhD; Masafumi Watanabe, MD, PhD

Background: Insulin resistance as assessed using homeostasis model assessment ratio (HOMA-R) is associated with latent myocardial damage in apparently healthy subjects in health check. Meanwhile, diabetes mellitus (DM) is an unfavorable prognostic risk factor in patients with heart failure (HF). We examined the impact of pancreatic β -cell dysfunction on clinical outcomes in HF patients without DM.

Methods and Results: This study enrolled 312 HF patients without DM. Pancreatic β -cell dysfunction was defined as HOMA- β <30%. A total of 108 patients (35%) had β -cell dysfunction. Plasma brain natriuretic peptide was higher in patients with pancreatic β -cell dysfunction compared with those without (625.2 vs. 399.0 pg/mL, $P < 0.001$). On Kaplan-Meier analysis, a significantly higher cardiovascular events rate was observed in patients with pancreatic β -cell dysfunction (log-rank test, $P = 0.001$), but there was no significant difference between patients with and without insulin resistance. On Cox hazard analysis, pancreatic β -cell dysfunction was independently associated with cardiovascular events after adjustment for confounding factors (HR, 1.58; 95% CI: 1.02–2.45), whereas insulin resistance was not associated with cardiovascular events.

Conclusions: Pancreatic β -cell dysfunction, but not insulin resistance, was associated with unfavorable outcome in HF patients without DM.

Key Words: Heart failure; Insulin resistance; Pancreatic β -cell function; Prognosis

The natural history of diabetes mellitus (DM) is now understood. The presence of insulin resistance leads to hyperinsulinemia, based on overwork of islet β cells. Given that the overwork of β cells does not last long, hyperglycemia becomes obvious and then DM occurs.^{1,2}

We previously reported that insulin resistance, based on homeostasis model assessment ratio (HOMA-R), is associated with latent and ongoing myocardial damage in apparently healthy subjects in community-based health check.³ Insulin resistance has also been reported to lead to heart failure (HF) in a community-based cohort.⁴ The proposed mechanisms by which insulin resistance leads to myocardial damage are lipotoxicity induced by hyperinsulinemia; myocyte apoptosis; mitochondrial dysfunction; and autonomic nervous system dysfunction.^{5,6} Meanwhile, DM is a well-known unfavorable prognostic risk factor in patients with HF.⁷

Little is known, however, about the association between

the natural history of DM and the prognosis of HF, especially the association between pancreatic β -cell dysfunction and HF: that is, cardiometabolic syndrome.⁸ The purpose of this study was therefore to clarify the impact of insulin resistance and pancreatic β -cell dysfunction, assessed using HOMA, on cardiac prognosis in HF patients without DM.

Methods

Subjects

Between September 2009 and October 2011, 469 consecutive patients were admitted to Yamagata University Hospital for treatment of worsening HF, for diagnosis and pathophysiological investigations, or for therapeutic evaluation of HF. The diagnosis of HF was based on a history of dyspnea and symptoms of exercise intolerance followed by pulmonary congestion, pleural effusion, or left ventricular enlargement on chest X-ray or echocardiography.⁹

Received April 5, 2019; revised manuscript received May 11, 2019; accepted May 20, 2019; J-STAGE Advance Publication released online May 29, 2019 Time for primary review: 11 days

Department of Internal Medicine III (Cardiology), Hamamatsu University School of Medicine, Hamamatsu (T.N.); Department of Cardiology, Pulmonology, and Nephrology, Yamagata University School of Medicine, Yamagata (T.W., S.K., H. Tamura, S.N., H. Takahashi, T.A., T.S., M.W.), Japan

Mailing address: Tetsu Watanabe, MD, PhD, Department of Cardiology, Pulmonology, and Nephrology, Yamagata University School of Medicine, 2-2-2 Iida-nishi, Yamagata 990-9585, Japan. E-mail: tewatana@med.id.yamagata-u.ac.jp

ISSN-2434-0790 All rights are reserved to the Japanese Circulation Society. For permissions, please e-mail: cr@j-circ.or.jp

Table 1. Subject Baseline Characteristics	
	n=312
Age (years)	72±13
Male	175 (56)
Etiology	
Hypertensive heart disease	58 (19)
Ischemic heart disease	58 (19)
Dilated cardiomyopathy	57 (18)
Valvular heart disease	46 (14)
Other causes	93 (30)
Presentation profile	
BMI (kg/m ²)	22.1±4.0
eGFR (mL/min/1.73 m ²)	63.0±34.8
NYHA III/IV	205 (66)
Blood biomarkers	
Albumin (g/dL)	3.4±0.6
FPG (mg/dL)	100.4±16.1
Insulin (μU/mL)	5.1 (3.1–8.5)
Hemoglobin A _{1c} (%) NGSP	5.4 (5.1–5.7)
Total cholesterol (mg/dL)	162.3±40.5
Triglyceride (mg/dL)	86.0±42.8
LDL-C (mg/dL)	94.9±32.4
HDL-C (mg/dL)	52.3±14.8
BNP (pg/mL)	456.6 (215.4–942.4)
Echocardiography data	
LVEDD (mm)	54.3±10.6
LVEF (%)	47.3±17.6
Medication	
ACEI and/or ARB	189 (61)
β-blockers	181 (58)

Data given as mean±SD, n (%) or median (IQR). ACEI, angiotensin-converting enzyme inhibitor; ARB, angiotensin receptor blocker; BMI, body mass index; BNP, brain natriuretic peptide; BUN, blood urea nitrogen; eGFR, estimated glomerular filtration rate; FPG, fasting plasma glucose; H-FABP, heart-type fatty binding protein; HDL-C, high-density lipoprotein cholesterol; LDL-C, low-density lipoprotein cholesterol; LVEDD, left ventricular end-diastolic diameter; LVEF, left ventricular ejection fraction; NGSP, National Glycohemoglobin Standardization Program; NYHA, New York Heart Association.

Five patients undergoing chronic hemodialysis were excluded. Ninety-five patients with DM and 30 patients without the required data were also excluded. The remaining 339 patients were enrolled in the present study.

All subjects gave written informed consent prior to participation, and the protocol was approved by the institution's Human Investigation Committee. The procedures were performed in accordance with the Helsinki Declaration.

Endpoints and Follow-up

The patients were prospectively followed for 1 year. The endpoints were cardiovascular events including deaths due to progressive HF, myocardial infarction, stroke, other vascular disease and sudden cardiac death, and re-hospitalization for worsening HF. Sudden cardiac death was defined as death without definite premonitory symptoms or signs, and was confirmed by the attending physician. Two cardiologists, who were blinded to the blood biomarker data, reviewed the medical records and conducted telephone interviews to survey the incidence of cardiovascular events.¹⁰

Beta-Cell Dysfunction and Insulin Resistance

Pancreatic β-cell function was estimated using HOMA-β: $HOMA-β (\%) = (\text{fasting insulin} \times 360) / (\text{fasting plasma glucose} - 63)$. Pancreatic β-cell dysfunction was defined as $HOMA-β < 30\%$.¹¹ Insulin resistance was also evaluated using HOMA-R. $HOMA-R = \text{fasting insulin} \times \text{fasting plasma glucose} / 405$. Insulin resistance was defined as $HOMA-R > 2.5$.¹¹

Statistical Analysis

Data are presented as mean±SD. In the case of non-normal distribution, the data are presented as median (IQR). Unpaired Student's t-test and the chi-squared test were used for comparison between 2 groups of continuous and of categorical variables, respectively. Mann-Whitney U-test was used for non-normally distributed data. Comparison of data between 3 groups was performed using 1-way analysis of variance (ANOVA) followed by Bonferroni post-hoc analysis. Univariate and multivariate analysis with Cox proportional hazard regression were used to determine significant predictors of cardiovascular events. Multivariate analysis was adjusted for factors that were significant on univariate analysis. Plasma brain natriuretic peptide (BNP) was converted to the logarithm in Cox proportional hazard regression analysis. Cumulative overall and event-free survival rates were computed using the Kaplan-Meier method and were compared using log-rank test. $P < 0.05$ was considered statistically significant. All statistical analysis was performed using JMP version 10 (SAS Institute, Cary, NC, USA).

Results

Subject Characteristics

After exclusion of 12 patients who underwent elective cardiac surgery during the follow-up period and 15 patients who were lost to follow-up, 312 patients were included in the final analysis. Baseline patient characteristics are listed in **Table 1**. There were 175 men (56%), and the mean age was 72±13 years old. Median plasma BNP was 456.6 pg/mL (IQR, 215.4–942.4 pg/mL) and 108 patients (35%) had pancreatic β-cell dysfunction.

Beta-Cell Dysfunction Status

Subjects were divided into 2 groups according to the presence of pancreatic β-cell dysfunction. The prevalence of pancreatic β-cell dysfunction increased with New York Heart Association (NYHA) functional class (II, 21%; III, 37%; and IV, 51% respectively, $P < 0.001$; **Figure 1A**). Moreover, HOMA-β decreased with increasing NYHA functional class ($P < 0.001$; **Figure 1B**).

The patients with pancreatic β-cell dysfunction were older than those without. Body mass index (BMI), serum albumin, and triglyceride were lower, and plasma BNP was higher in patients with pancreatic β-cell dysfunction compared with those without (median, 625.2 vs. 399.0 pg/mL, $P < 0.001$; **Figure 1C**; **Table 2**).

We previously reported that serum heart-type fatty acid-binding protein (H-FABP) as a marker of myocardial damage is associated with prognosis in patients with HF.¹² Serum H-FABP was higher in patients with pancreatic β-cell dysfunction compared with those without (median, 14.1 vs. 7.1 ng/mL, $P < 0.001$; **Figure 2A**). There was no significant difference, however, in serum H-FABP between patients with and without insulin resistance (**Figure 2B**).

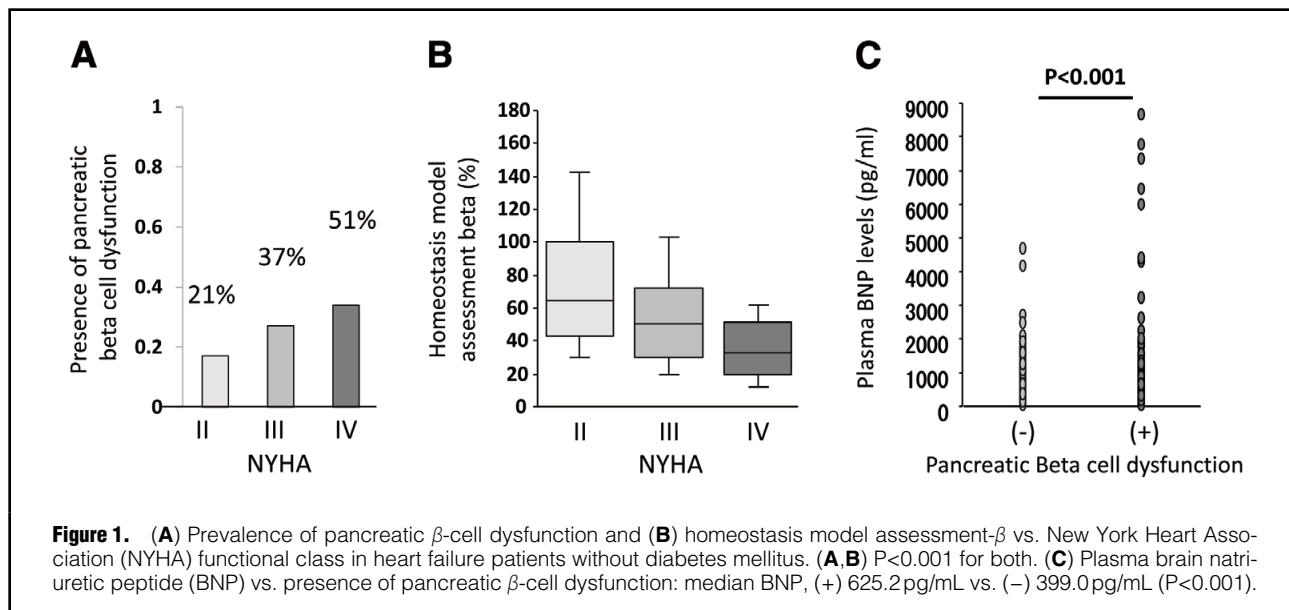
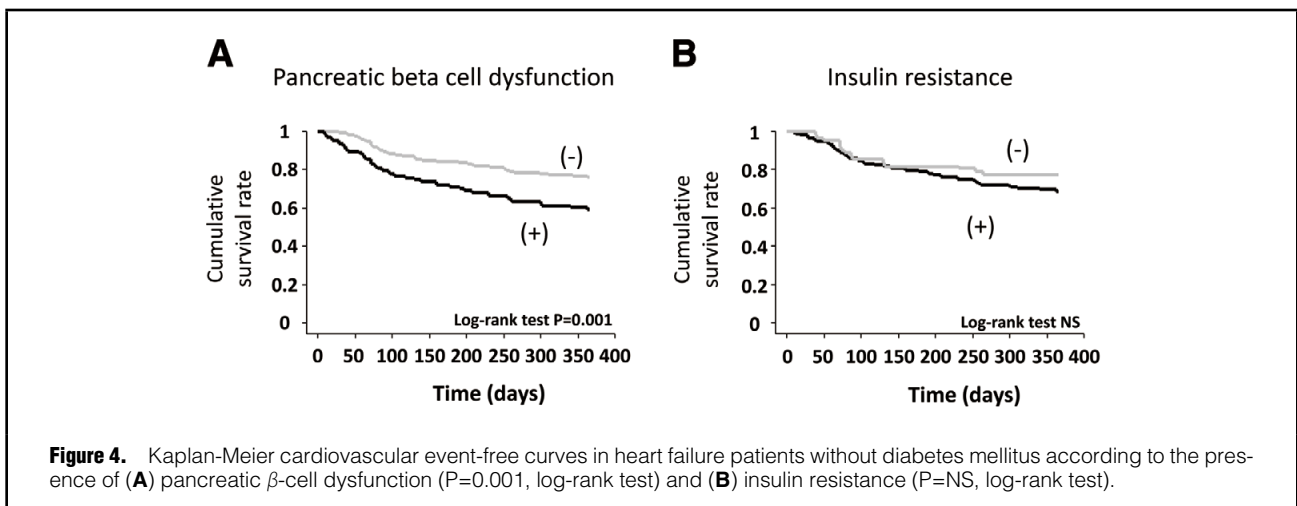
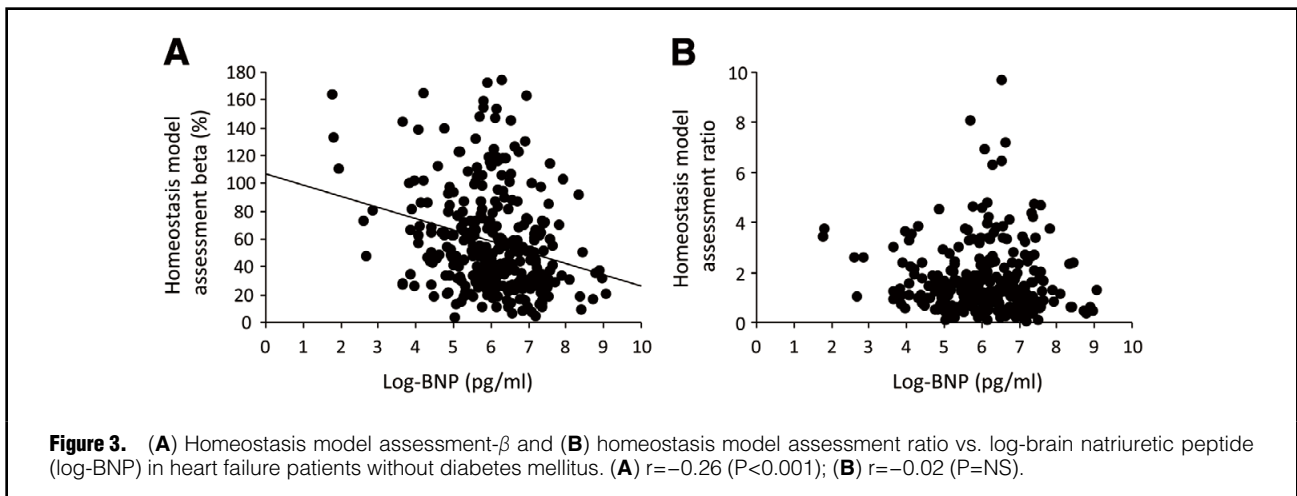
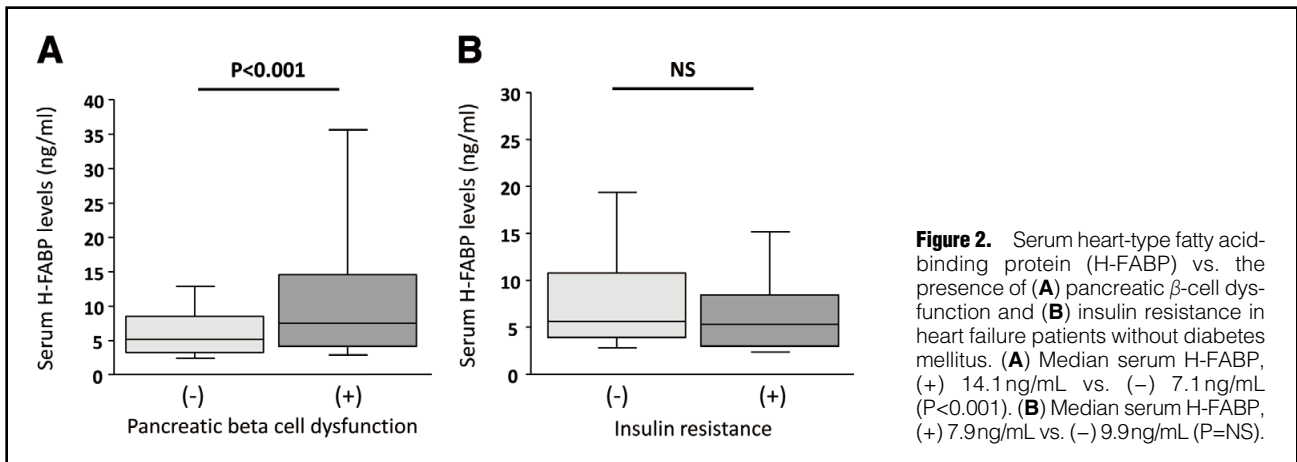


Table 2. Subject Characteristics vs. Pancreatic β -Cell Dysfunction			
	Normal pancreatic β -cell function (n=204)	Pancreatic β -cell dysfunction (n=108)	P-value
Age (years)	69 \pm 13	77.5 \pm 11.6	<0.001
Male	116 (57)	59 (55)	0.705
Etiology			0.451
Hypertensive heart disease	31	27	–
Ischemic heart disease	33	25	–
Dilated cardiomyopathy	44	13	–
Valvular heart disease	31	15	–
Other causes	65	28	–
Presentation profile			
BMI (kg/m ²)	23.0 \pm 4.0	20.2 \pm 3.3	<0.001
eGFR (mL/min/1.73m ²)	62.1 \pm 25.9	64.7 \pm 47.2	0.533
NYHA III/IV	119 (58)	86 (80)	<0.001
Blood biomarkers			
Albumin (g/dL)	3.5 \pm 0.6	3.2 \pm 0.6	<0.001
FPG (mg/dL)	99.4 \pm 15.2	102.1 \pm 17.7	0.168
Insulin (μ U/mL)	6.9 (4.8–10.6)	2.6 (1.9–4.0)	<0.001
Hemoglobin A _{1c} (%) NGSP	5.4 (5.1–5.7)	5.4 (5.1–5.7)	0.985
Total cholesterol (mg/dL)	162.0 \pm 42.1	162.9 \pm 37.5	0.873
Triglyceride (mg/dL)	90.3 \pm 46.7	77.9 \pm 32.8	0.015
LDL-C (mg/dL)	94.7 \pm 34.6	95.3 \pm 28.0	0.881
HDL-C (mg/dL)	52.0 \pm 14.6	53.0 \pm 15.1	0.561
BNP (pg/mL)	399.0 (180.6–783.8)	625.2 (305.5–1,252.8)	<0.001
Echocardiography data			
LVEDD (mm)	54.8 \pm 11.0	53.3 \pm 9.8	0.223
LVEF (%)	47.0 \pm 18.4	48.1 \pm 15.9	0.597
Medication			
ACEI and/or ARB	129 (63)	60 (56)	0.188
β -blockers	121 (59)	60 (56)	0.523

Data given as mean \pm SD, n (%) or median (IQR). Abbreviations as in Table 1.



Serum BNP, HOMA- β and HOMA-R

HOMA- β ($r = -0.26$, $P < 0.001$) was negatively correlated with log-BNP (Figure 3A), but there was no correlation between HOMA-R and log-BNP (Figure 3B).

Beta-Cell Dysfunction and Cardiac Events

There were 90 cardiovascular events (29%), consisting of 25 cardiovascular deaths and 65 rehospitalizations for worsening HF during the follow-up period. On Kaplan-Meier analysis, significantly higher cardiac event rates were observed in patients with pancreatic β -cell dysfunction (log-

Table 3. Unadjusted and Adjusted HR for Cardiovascular Events

	Unadjusted HR	95% CI	P-value	Adjusted HR [†]	95% CI	P-value
Age (10-year increase)	1.26	1.06–1.49	0.009	1.15	0.96–1.37	0.129
Gender (male)	1.12	0.74–1.71	0.583	1.25	0.82–1.91	0.296
NYHA functional class (III/IV)	1.01	0.65–1.58	0.960	–	–	–
Log-BNP (1-SD increase)	1.47	1.18–1.83	<0.001	1.35	1.08–1.69	0.009
LVEF (10% increase)	0.98	0.87–1.10	0.698	–	–	–
Pancreatic β -cell dysfunction	1.97	1.30–2.98	0.001	1.58	1.02–2.45	0.039
Insulin resistance	1.44	0.81–2.54	0.212	–	–	–

[†]After adjustment for age, gender, and log-serum BNP. Abbreviations as in Table 1.

rank test, $P=0.001$; **Figure 4A**). There was no significant difference in cardiac event rates, however, according to insulin resistance status (log-rank test, $P=NS$; **Figure 4B**).

On univariate Cox hazard analysis, the unadjusted hazard ratio (HR) for cardiovascular events was significantly increased with pancreatic β -cell dysfunction (unadjusted HR, 1.97; 95% CI: 1.30–2.98; **Table 3**). Insulin resistance, however, was not associated with cardiovascular events (unadjusted HR, 1.44; 95% CI: 0.81–2.54). On multivariate analysis, β -cell dysfunction was associated with cardiovascular events (adjusted HR, 1.58; 95% CI: 1.02–2.45) after adjustments for age, gender, and log-plasma BNP (**Table 3**).

Discussion

In the present study, we have clearly demonstrated that pancreatic β -cell dysfunction but not insulin resistance on HOMA was associated with unfavorable outcomes in HF patients without DM.

While the insulin level is high, hepatic glucose production is suppressed, and fasting blood sugar and post-prandial blood sugar are maintained in the normal range, and there are no symptoms. Hepatic insulin resistance is accompanied by skeletal muscle insulin resistance, and pancreatic dysfunction. The overwork of pancreatic β -cell function does not last long, and exhaustion leads to impairment of insulin secretion.^{13,14} Hepatic glucose production starts to increase simultaneously with the lowering pancreatic β -cell function, leading to blood sugar elevation. In this manner, the understanding of pancreatic β -cell function has shed new light on the pathological background of DM development.¹⁵

DM is one of the most common risk factors for the development of cardiovascular disease.¹⁶ Acute myocardial infarction patients with DM have severe left ventricular systolic dysfunction and mortality due to HF compared with those without.¹⁷ Iribarren et al reported that HF patients with DM had severe mortality and frequent rehospitalization rate compared with those without.⁷ Insulin resistance is also a known risk factor for the development of cardiovascular disease and HF. We previously reported that insulin resistance is associated with latent and ongoing myocardial damage in apparently healthy subjects in community-based health check.³ Insulin resistance was also reported to be associated with the development of HF in a community-based cohort.⁴ This indicates that insulin resistance plays a role in the early stage of development of HF. Also, in HF patients, hyperinsulinemia based on insulin resistance induces chronic adipose tissue inflammation and development of the catabolic state.¹⁸ Remarkable enhancement of insulin signaling promotes the myocyte aging pro-

cess, which worsens cardiac function and aggravates HF.¹⁹

In the present study there was no association between insulin resistance on HOMA-R and prognosis in HF patients without DM. Although pancreatic β -cell dysfunction assessed on HOMA- β was correlated with log-BNP, insulin resistance was not correlated with log-BNP. Insulin resistance as assessed on HOMA-R did show a trend, but this was not statistically significant due to the limited number of patients analyzed and the short follow-up period (1 year). HOMA-R and HOMA- β are convenient tools for the assessment of systemic insulin resistance and secretion, respectively. Of course, they are indirect indicators, but are worthwhile in daily medical practice for patients with HF.

Before the onset of DM, hyperinsulinemia based on sustained insulin resistance leads to pancreatic β -cell dysfunction and hypoinsulinemia.²⁰ Myocardial ischemia due to HF changes aerobic metabolism to anaerobic metabolism in myocytes.²¹ Insulin plays a key role in the uptake of glucose. Anaerobic metabolism in myocytes uses glucose in mitochondria and produces adenosine triphosphate.²² In this study, BMI was significantly lower in patients with pancreatic β -cell dysfunction compared with those without. Given that Asian patients with DM are more prone to insulin resistance, with a poorer insulin secretory potential than Western patients,²³ it was possible that Japanese patients with HF are likely to show pancreatic β -cell dysfunction, which may be associated with lower BMI. Berry and Clark suggested that several inflammatory cytokines, such as interleukin (IL)-1, IL-6, and tumor necrosis factor- α , are elevated in patients with HF, and induce chronic inflammation and metabolic disorder, which promote a catabolic state.²⁴ HOMA-R and HOMA- β are convenient tools for the assessment of systemic insulin resistance and secretion, respectively. Thus, hypoinsulinemia based on pancreatic β -cell dysfunction worsens cardiac function. The present study has shown that pancreatic β -cell dysfunction, but not insulin resistance, provides important information in HF patients without DM.

Conclusions

Pancreatic β -cell dysfunction was associated with unfavorable outcomes in HF patients without DM. Future research is required to investigate the association between the state of HF and cardiometabolic dysfunction.

Acknowledgments

The authors would like to express their gratitude to the staff at the Department of Cardiology, Pulmonology, and Nephrology, Yamagata University School of Medicine, Yamagata, Japan for their kind coop-

eration while conducting this study. Research described in this manuscript was supported in part by a grant-in-aid for Scientific Research (#18H06191) from the Ministry of Education Culture, Sport, Science, and Technology.

Disclosures

The authors declare no conflicts of interest.

References

- Kuritzky L, Samraj GP. Enhanced glycemic control with combination therapy for type 2 diabetes in primary care. *Diabetes Ther* 2011; **2**: 162–177.
- Yagihashi S. Clinical staging of type 2 diabetes: The time has come. *J Diabetes Investig* 2012; **3**: 1–2.
- Narumi T, Shishido T, Kiribayashi N, Kadowaki S, Nishiyama S, Takahashi H, et al. Impact of insulin resistance on silent and ongoing myocardial damage in normal subjects: The Takahata study. *Exp Diabetes Res* 2012; **2012**: 815098.
- Vardeny O, Gupta DK, Claggett B, Burke S, Shah A, Loehr L, et al. Insulin resistance and incident heart failure the ARIC study (Atherosclerosis Risk in Communities). *JACC Heart Fail* 2013; **1**: 531–536.
- Zhang X, Chen C. A new insight of mechanisms, diagnosis and treatment of diabetic cardiomyopathy. *Endocrine* 2012; **41**: 398–409.
- Ernande L, Derumeaux G. Diabetic cardiomyopathy: Myth or reality? *Arch Cardiovasc Dis* 2012; **105**: 218–225.
- Iribarren C, Karter AJ, Go AS, Ferrara A, Liu JY, Sidney S, et al. Glycemic control and heart failure among adult patients with diabetes. *Circulation* 2001; **103**: 2668–2673.
- Castro JP, El-Atat FA, McFarlane SI, Aneja A, Sowers JR. Cardiometabolic syndrome: Pathophysiology and treatment. *Curr Hypertens Rep* 2003; **5**: 393–401.
- Jessup M, Abraham WT, Casey DE, Feldman AM, Francis GS, Ganiats TG, et al. 2009 focused update: ACCF/AHA guidelines for the diagnosis and management of heart failure in adults: A report of the American College of Cardiology Foundation/American Heart Association Task Force on Practice Guidelines: Developed in collaboration with the International Society for Heart and Lung Transplantation. *Circulation* 2009; **119**: 1977–2016.
- Narumi T, Watanabe T, Kadowaki S, Takahashi T, Yokoyama M, Kinoshita D, et al. Sarcopenia evaluated by fat-free mass index is an important prognostic factor in patients with chronic heart failure. *Eur J Intern Med* 2015; **26**: 118–122.
- Matthews DR, Hosker JP, Rudenski AS, Naylor BA, Treacher DF, Turner RC. Homeostasis model assessment: Insulin resistance and beta-cell function from fasting plasma glucose and insulin concentrations in man. *Diabetologia* 1985; **28**: 412–419.
- Arimoto T, Takeishi Y, Shiga R, Fukui A, Tachibana H, Nozaki N, et al. Prognostic value of elevated circulating heart-type fatty acid binding protein in patients with congestive heart failure. *J Card Fail* 2005; **11**: 56–60.
- Henry RR. Type 2 diabetes care: The role of insulin-sensitizing agents and practical implications for cardiovascular disease prevention. *Am J Med* 1998; **105**: 20S–26S.
- Nathan DM. Clinical practice: Initial management of glycemia in type 2 diabetes mellitus. *N Engl J Med* 2002; **347**: 1342–1349.
- Sakuraba H, Mizukami H, Yagihashi N, Wada R, Hanyu C, Yagihashi S. Reduced beta-cell mass and expression of oxidative stress-related DNA damage in the islet of Japanese type II diabetic patients. *Diabetologia* 2002; **45**: 85–96.
- Haffner SM, Lehto S, Ronnema T, Pyorala K, Laakso M. Mortality from coronary heart disease in subjects with type 2 diabetes and in nondiabetic subjects with and without prior myocardial infarction. *N Engl J Med* 1998; **339**: 229–234.
- Kip KE, Faxon DP, Detre KM, Yeh W, Kelsey SF, Currier JW. Coronary angioplasty in diabetic patients: The National Heart, Lung, and Blood Institute Percutaneous Transluminal Coronary Angioplasty Registry. *Circulation* 1996; **94**: 1818–1825.
- Ashrafian H, Frenneaux MP, Opie LH. Metabolic mechanisms in heart failure. *Circulation* 2007; **116**: 434–448.
- Shimizu I, Yoshida Y, Katsuno T, Tateno K, Okada S, Moriya J, et al. p53-induced adipose tissue inflammation is critically involved in the development of insulin resistance in heart failure. *Cell Metab* 2012; **15**: 51–64.
- Poitout V, Robertson RP. Minireview: Secondary beta-cell failure in type 2 diabetes – a convergence of glucotoxicity and lipotoxicity. *Endocrinology* 2002; **143**: 339–342.
- Bing RJ. Cardiac metabolism. *Physiol Rev* 1965; **45**: 171–213.
- Kubler W, Spieckermann PG. Regulation of glycolysis in the ischemic and the anoxic myocardium. *J Mol Cell Cardiol* 1970; **1**: 351–377.
- Kodama K, Tojjar D, Yamada S, Toda K, Patel CJ, Butte AJ. Ethnic differences in the relationship between insulin sensitivity and insulin response. *Diabetes Care* 2013; **36**: 1789–1796.
- Berry C, Clark AL. Catabolism in chronic heart failure. *Eur Heart J* 2000; **21**: 521–532.