

Characterization of ^{125}I -Tissue Plasminogen Activator Binding to Cerebellar Granule Neurons

Shahla Verrall and Nicholas W. Seeds

Department of Biochemistry, Biophysics, and Genetics, University of Colorado Health Science Center, Denver, Colorado 80262

Abstract. Mouse cerebellar cells in culture secrete tissue plasminogen activator (tPA) into the culture medium. Fibrin overlays have shown tPA to be associated with granule neurons in these cultures. This cell associated tPA can be displaced by extensive washing of the cells or by a brief lowering of the pH (<4), which leads to a loss of fibrinolytic activity by the cells. Incubation of these fibrinolytically inactive cells with exogenously added murine tPA leads to the restoration of the fibrinolytic activity, indicating the presence of tPA binding sites on these granule neurons. Using ^{125}I -tPA, the binding to cerebellar granule neurons is rapid, saturable, specific, high affinity ($K_d = 50$ pM) and reversible. Both murine and human tPA compete with ^{125}I -tPA for binding, while both murine and human urokinase (uPA) as well as human

thrombin and plasminogen fail to compete. Neither the catalytic site nor the carbohydrate moiety of tPA appear to be involved in the binding, since both diisopropyl-fluorophosphate-treated tPA and endoglycosidase-H-treated tPA compete with ^{125}I -tPA for binding. Furthermore, epidermal growth factor does not compete well with tPA for binding even at a 10:1 molar excess, suggesting that the epidermal growth factor-like (EGF) domain of tPA may not be involved in the binding mechanism. Autoradiography and antibody immunofluorescence show the specific tPA binding is to granule neurons in these cultures. Thus, granule neurons possess tPA receptors on their surface, where this protease binds retaining its functional activity and may play a role in cell and axon migration.

CEREBELLAR development is characterized by extensive axonal growth and migration of its granule neurons. Although these axonal and cell movements have been proposed to occur by purely physical means and likened to "battering rams" (7), more recent studies have suggested the possibility that extracellular proteases may facilitate these movements (21–24, 29, 42) by locally digesting cell–cell and cell–matrix adhesions. Plasminogen activators (PAs)¹ are the best documented extracellular proteases involved in cell movement and tissue remodeling (12). Thus, it is not surprising that PA activity is elevated in rodent brain at the time of active cell migration (21, 38, 41) and that PA is actively secreted into the culture medium by dissociated cerebellar cells (38). The PA activity in these cultures has been localized to the granule cells by a fibrin clot overlay (22). Using an antibody to tissue plasminogen activator (tPA), the interaction of this anti-tPA with live granule cells in culture indicated that tPA was associated with the surface of these cells (39).

The present study demonstrates a tPA receptor on developing granule cell neurons and characterizes some properties of this binding. A preliminary report of these findings has appeared (Verrall, S., and N. W. Seeds. 1987. *J. Cell Biol.* 105:319a [Abstr.]).

1. *Abbreviations used in this paper:* BEM, basal Eagle's medium; PA, plasminogen activator; tPA, tissue PA; uPA, urokinase.

Materials and Methods

Cell Culture

Cerebella were removed from postnatal day eight mice and the finely diced tissue was dissociated enzymatically in 0.17% trypsin in saline 1 (0.138 M NaCl, 5.4 mM KCl, 1.1 mM Na_2HPO_4 , 1.1 mM KH_2PO_4) containing 0.4% glucose, 0.01% CaCl_2 , and 3 $\mu\text{g}/\text{ml}$ DNase (United States Biochemical Corp., Cleveland, OH) and incubated at 37°C with constant rotation for 12 min. The dissociation medium was replaced by basal Eagle's medium (BEM) containing 10% heated (for 30 min at 56°C, which inactivates residual tPA) FCS, and the tissue was dispersed by gentle pipetting and passed through a nylon screen to collect single cells. Cells were collected by centrifugation and enriched for granule cells by adsorption of nonneuronal cells on glass beads during an hour incubation in BEM with 10% FCS. The nonattached neurons were aspirated from the medium surrounding the beads and collected by centrifugation. The cells were resuspended in BEM with 10% acid-treated (20) FCS and plated at 200,000 cells/cm² on poly-D-lysine coated rectangular plastic coverslips (Miles Scientific, Naperville, IL). Rous sarcoma virus transformed vole (*Microtus agretis*) fibroblasts, clone IT (9), were grown in DME containing 5% FCS. Conditioned medium was obtained by rinsing confluent cultures three times with saline 1 and incubating them in serum-free DME for 24 h.

tPA and Other Proteases

Murine tPA was isolated from serum-free conditioned medium from Rous sarcoma virus-transformed vole fibroblasts by adsorption on zinc chelate-agarose (Pharmacia Fine Chemicals, Piscataway, NJ) as described by Rijken and Collen (36), followed by immunoaffinity chromatography using Affi-gel-linked (Bio-Rad Laboratories, Cambridge, MA) anti-mouse-tPA IgG.

The monospecific anti-mouse-tPA was developed in rabbits and the IgG isolated from antiserum on protein A-agarose (Pierce Chemical Co., Rockford, IL) (48). Briefly, pooled tPA fractions from the zinc chelate-agarose column were applied to the immunoaffinity column (0.9 × 3.3 cm) equilibrated with 0.2 M ammonium bicarbonate (pH 7.5) at a flow rate of 0.5 ml/h. The column was extensively washed with the same buffer, the tPA eluted with 0.1 M ammonium formate (pH 3). Fractions containing tPA were neutralized with 17% NH₄OH, pooled and lyophilized. A single protein species of approximate *M_r* 70,000 was observed in silver-stained (30) polyacrylamide gels under reducing (not shown) and nonreducing conditions (Fig. 1 a), suggesting the secretion of single-chain tPA molecules into the culture medium by the vole IT fibroblasts.

The tPA was radiolabeled with ¹²⁵I-Na (Amersham International, Amersham, UK) using Iodo-Beads (Pierce Chemical Co.) for 15 min at 20°C. The free iodine was removed by passing the labeled protein over an exocellulose GF-S column (Pierce Chemical Co.), preequilibrated with 0.1 M Tris-HCl (pH 7.4) containing 1 mg/ml BSA. Only a single radiolabeled species comigrating with murine tPA was seen (Fig. 1 b). DFP-tPA was prepared by treating the tPA with 10 mM diisopropyl-fluorophosphate for 2 h at 20°C; the inactivation was > 97%. Carbohydrate depleted tPA was prepared as described by Little et al. (25).

Mouse urokinase (uPA) was prepared from mouse urine by affinity chromatography on *p*-aminobenzamidine-agarose (Pierce Chemical Co.) as described by Holmberg et al. (19), followed by passage over an anti-tPA-Affigel column to remove residual tPA.

The amino-terminal 30 kD finger-domain fragment of human fibronectin (the generous gift of Dr. P. McGuire, University of Colorado Health Science Center) was prepared by mild trypsinization, and isolated following its exclusion from gelatin-Sepharose and its specific elution from heparin-agarose chromatography according to the procedure of Sekiguchi et al. (40).

Human (melanoma) tPA, reference standard, was obtained from the National Institute for Biological Standards and Control, Hertfordshire, UK. Recombinant tPA (human) was from Genentech Inc. (San Francisco, CA). Human uPA was purchased from Calbiochem-Behring Corp. (San Diego, CA); receptor grade epidermal growth factor was from Collaborative Research, Inc. (Waltham, MA); and human plasminogen was from Kabi (Helena Laboratories, Beaumont, TX). Human alpha-thrombin was a gift from Dr. J. Fenton (Albany Medical College). Heparin (clinical grade; Upjohn Corp., Kalamazoo, MI) was isolated by precipitation with 3 vol of 95% ethanol, centrifuged, boiled for 10 min, and then placed in ice at 0.25 mg/ml.

Assays for Plasminogen Activator

tPA activity was quantified by a chromogenic assay of Gilboa et al. (14), essentially as described by Hawkins and Seeds (17). tPA samples were incubated with plasminogen for 2 h followed by the addition of the chromogenic plasmin substrate Kabi S-2251 for another 2 h.

The fibrin overlay procedure of Todd (45) was used as modified by Krystosek and Seeds (22). The cultures were washed three times with saline 1, coated with a drop of thrombin (50 U/ml), followed by a drop of crude fibrinogen (75% clottable; ICN Lisle, IL), and drained. The thin fibrin clot was incubated in a moist chamber for 90 min, fixed and stained with Coomassie brilliant blue and mounted for microscopic observation and counting of the fibrinolytic zones.

¹²⁵I-tPA Binding Assay

The binding experiments were performed on 5–6-d cerebellar cultures grown on coverslips. Endogenous cell-bound PA was dissociated by rinsing the coverslips 3 times in saline 1, 0.1 mM CaCl₂, 1 mM MgCl₂, and placing the coverslips in 50 mM glycine-HCl (pH 3), 0.1 M NaCl for 5 min at 20°C, then neutralizing rapidly with 0.5 M Hepes (pH 7.5), and rinsing 5 times in saline 1 (Ca, Mg). In some studies, the endogenous tPA was displaced by repetitive washings of the cultures in serum-free BEM over several hours. The rinsed coverslips were incubated for 30 min at 20°C with ¹²⁵I-tPA in binding buffer (BEM containing 15 mM Hepes, 10 Kallikrein inhibitory units/ml aprotinin (Sigma Chemical Co., St. Louis, MO) and 1 mg/ml BSA), maintaining a final volume of 0.1 ml. The cells were rapidly washed 5 times with saline 1 (Ca, Mg) and the cell-associated radioactivity was determined. Specific binding was defined as the difference between cell-bound radioactivity in the absence and presence of a 50-fold molar excess of nonlabeled tPA. The binding data expressed in molar terms are based on the conversion of IU of tPA to its weight in grams as compared with the specific activity of the second international standard for tPA, 86/670. Cerebellar cell number was determined on the basis of DNA content (6) of random cultures, using a value of 5 pico g DNA/cell.

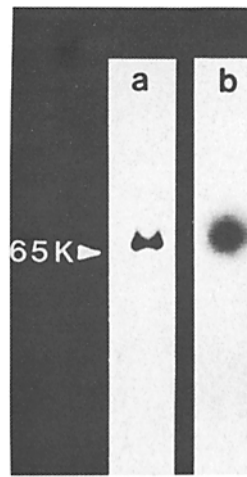


Figure 1. Homogeneity of murine tPA. Vole cell tPA (2 μg) eluted from the anti-tPA immunoaffinity column shows only a single band after silver staining an SDS-PAGE (lane a). The iodinated murine tPA used in the binding studies described below shows only a single radiolabeled band (25,000 cpm) when resolved on SDS-PAGE.

Competitive binding studies were performed by incubating the cell cultures with ¹²⁵I-tPA in the presence of an excess of the competing protein. Percent specific binding was calculated as described above for specific binding.

Autoradiography

¹²⁵I-tPA binding to cerebellar cells was carried out as described above in the presence or absence of an excess of nonlabeled tPA. The rinsed coverslips were fixed with 1.0% glutaraldehyde in saline 1 (Ca, Mg), rinsed in water and coated with NTB-2 emulsion (Eastman Kodak Co., Rochester, NY), and exposed at 4°C for several days before development and counterstaining.

Antibody Immunofluorescence

After 4 d in culture, cerebellar cells were switched to 10% AT-FCS in BEM for 16 h and then rinsed five times with BEM and incubated for 2 h in serum-free BEM. ¹²⁵I-tPA (human recombinant) was incubated with the cells for 15 min at room temperature. Diluted antibodies: Cbl-1, a neuron specific rabbit antibody (37), or rabbit anti-fibronectin (Collaborative Research Inc.) were added to the reaction and incubation continued for another 20 min. The coverslips were rapidly rinsed and fixed for 10 min in 4% paraformaldehyde, rinsed, after which some coverslips were treated with -20°C methanol for 5 min, then incubated for 20 min with rabbit anti-glia fibrillary acidic protein (11), and rinsed. All coverslips were incubated for 20 min with fluorescein-conjugated goat anti-rabbit IgG as described previously (10), then rinsed, air dried and mounted for autoradiography with NTB2 emulsion as described above. After development and processing, the coverslips were viewed with an epifluorescence microscope (Carl Zeiss, Inc., Thornwood, NY) using a 63× planapochromat objective. Photographs were taken of both fluorescent and bright field images (Tri-X Pan film; Eastman Kodak Co.).

Results

Plasminogen activator secreted by mouse cerebellar cells in culture is primarily tPA (>90%) with a small amount of uPA (<10%). PA activity in the culture medium is highest at day 3 and declines, while zones of fibrinolytic activity increase 4-fold from day 3 to a high at day 6 (50). This observation coupled with the finding that antibody to tPA binds to the surface of granule cell neurons (39), suggested that the fibrinolytic zones may reflect cell bound tPA. This possibility was explored by attempting to displace cell bound tPA by a brief lowering of the pH; a procedure used successfully for uPA bound to fibroblasts (2). Fig. 2 shows that the fibrinolytic activity of the cultures (a) is lost after a brief exposure to low pH (b). The low pH treatment does not inactivate the tPA,

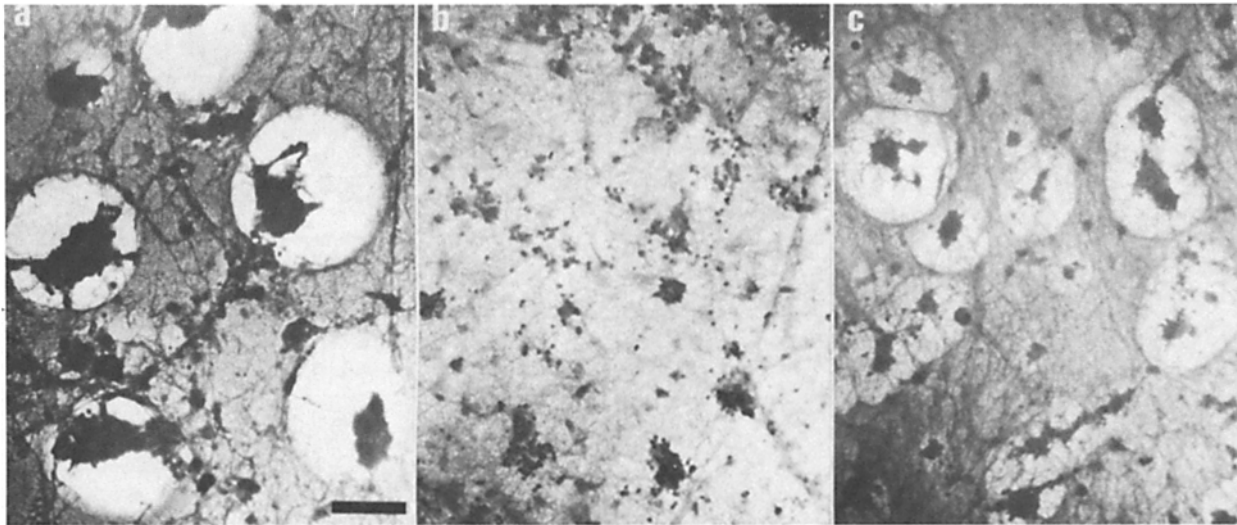


Figure 2. Fibrinolysis by cerebellar cell-bound tPA. Cerebella from 8-d mice were dissociated and cultured for 6 d as described in Materials and Methods. The cells were rinsed and incubated for 5 min at 20°C with 50 mM phosphate buffer (pH 7.4), 0.1 M NaCl (a), or 50 mM glycine-HCl (pH 3), 0.1 M NaCl (b and c). The cells were rinsed in saline 1 and overlaid with a fibrin clot (a and b), or incubated 30 min with 250 mIU RSV-vole cell-derived tPA in 0.25 ml Hepes (15 mM) buffered BEM containing 1 mg/ml BSA, and then rinsed and overlaid with a fibrin clot (c). Bar, 50 μ m.

but releases tPA into the culture medium where it can be identified by zymography (50). Furthermore, incubation of these low pH-treated cerebellar cells with exogenous murine tPA for 30 min followed by several rinses in BEM shows (c) the restoration of plasminogen-dependent fibrinolytic activity by the culture; indicating cell binding sites for tPA where tPA retains its proteolytic activity.

A more direct assessment of tPA binding to cerebellar cells is shown in Fig. 3 where 125 I-tPA displays rapid and specific binding, being readily competed with a 50-fold molar excess of unlabeled murine tPA. The $K_{obs} = 0.152 \text{ min}^{-1}$ for this binding to cerebellar neurons. The binding is saturable with increasing tPA concentration as seen in Fig. 4 A. Scatchard analysis of these data (Fig. 4 B) shows 125 I-tPA binding to cerebellar cells is of high affinity with a K_d of interaction on the order of $5 \times 10^{-11} \text{ M}$ and $\sim 30,000$ binding sites/cell. The 125 I-tPA binding is reversible with >75% of the specifically bound 125 I-tPA released by 15 min incubation in tPA-free medium.

Autoradiography of the cell bound 125 I-tPA shows that the specific binding is localized to small (6 μ m) granule neurons that tend to cluster in these cultures, although radiolabeled singlets and doublets are seen (Fig. 5 a). In the presence of a 50-fold molar excess of unlabeled tPA, nonspecific binding of the radioligand is seen (Fig. 5 b) over the coverslip and the larger and more extended glial and epithelial cells, and is not concentrated over the granule neuron clusters as seen in Fig. 5 a. The identity of the radiolabeled small round cells as granule neurons was further substantiated by double label experiments, where an antibody Cbl-1, specific for mouse neurons (37), was included in the binding assay and shown to bind to those same cells that showed high amounts of 125 I-tPA binding (Fig. 6, a and b). Similar results were found with tetanus toxin binding (data not shown). Although the granule neurons often cluster on top of astrocytes, the glial fibrillary acidic protein reactive glia do not bind the 125 I-tPA to their surface (Fig. 6, c and d). Furthermore, the possibility that

the tPA was binding not to the cells but to fibronectin in the matrix was ruled out by antibodies to fibronectin, whose binding does not coincide with the binding of 125 I-tPA (Fig. 6, e and f). Thus, tPA binding is a property of granule neurons in these cultures.

The binding of 125 I-tPA to granule neurons is specific for tPA (Table I); neither mouse nor human uPA compete for this tPA binding site. Furthermore, two other serine proteases, thrombin and plasminogen that have been reported to bind to cell surfaces (16, 27), do not effectively compete with tPA binding. As expected from the fibrinolytic results (Fig. 1), tPA binding to the granule cells does not involve the catalytic

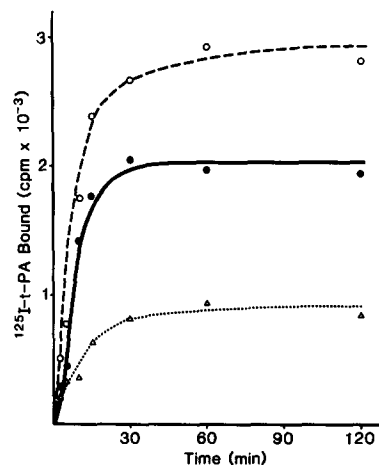


Figure 3. Time course of 125 I-tPA binding to cerebellar cells. Cerebellar cultures (3×10^5 cells) on plastic coverslips were incubated with 150 pM 125 I-tPA at 20°C in the absence (○) or presence (Δ) of a 50-fold molar excess of nonlabeled tPA. Specific binding (●) was determined as the difference between total and nonspecific binding as described in Materials and Methods. The results are an average of duplicate measurements.

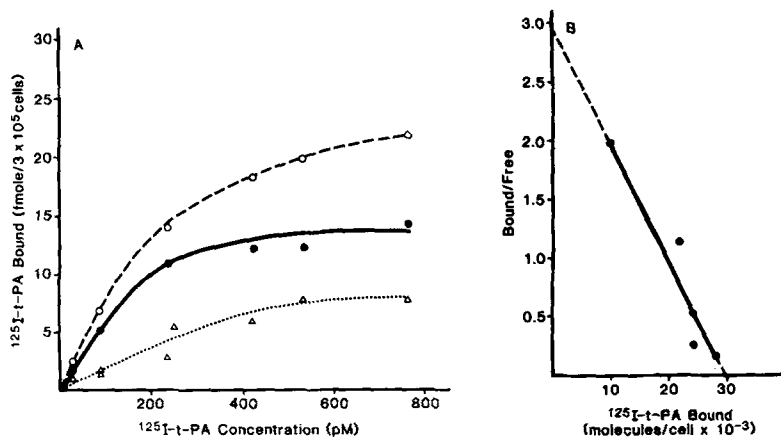


Figure 4. Saturation of ^{125}I -tPA binding to cerebellar cells. Cerebellar cultures (3×10^5 cells) were incubated with increasing amounts of ^{125}I -tPA for 30 min at 20°C in the absence (\circ) or presence (Δ) of a 50-fold molar excess of nonlabeled tPA (A). Specific binding was determined as described in Materials and Methods, and the data are an average of duplicate points. The experiment was repeated twice with similar results. These data are also shown in a Scatchard plot (B).

site, since DFP-tPA competes with ^{125}I -tPA for binding. Although tPA with a blocked catalytic site can bind, tPA which loses activity upon standing, by repetitive freeze-thaws or heat denaturation does not compete for binding to these sites. About 7% of tPA's mass is carbohydrate; however, removal of the mannose-rich oligosaccharides with Endo-H has no effect on tPA's binding activity. Furthermore, epidermal growth factor, a molecule that shares structural and sequence homology with tPA (3) shows very little competition for binding even at a 10-fold molar excess. Heparin, which is known to bind to tPA and enhance its activity (1), has also

been implicated in the cell binding of several proteins (26); however, heparin has little apparent effect on tPA binding to granule neurons. The amino-terminal fibronectin-like finger domain of tPA has been implicated in tPA's interaction with fibrin (3, 46). Therefore, the finger domain of human fibronectin was tested for its ability to compete with human ^{125}I -recombinant tPA (whose binding properties are similar to that of murine tPA). A 100-fold molar excess of this fibronectin finger region showed <20% decrease in the specific binding of tPA (data not shown).

Unless bound ligand is displaced by lowering the pH, very

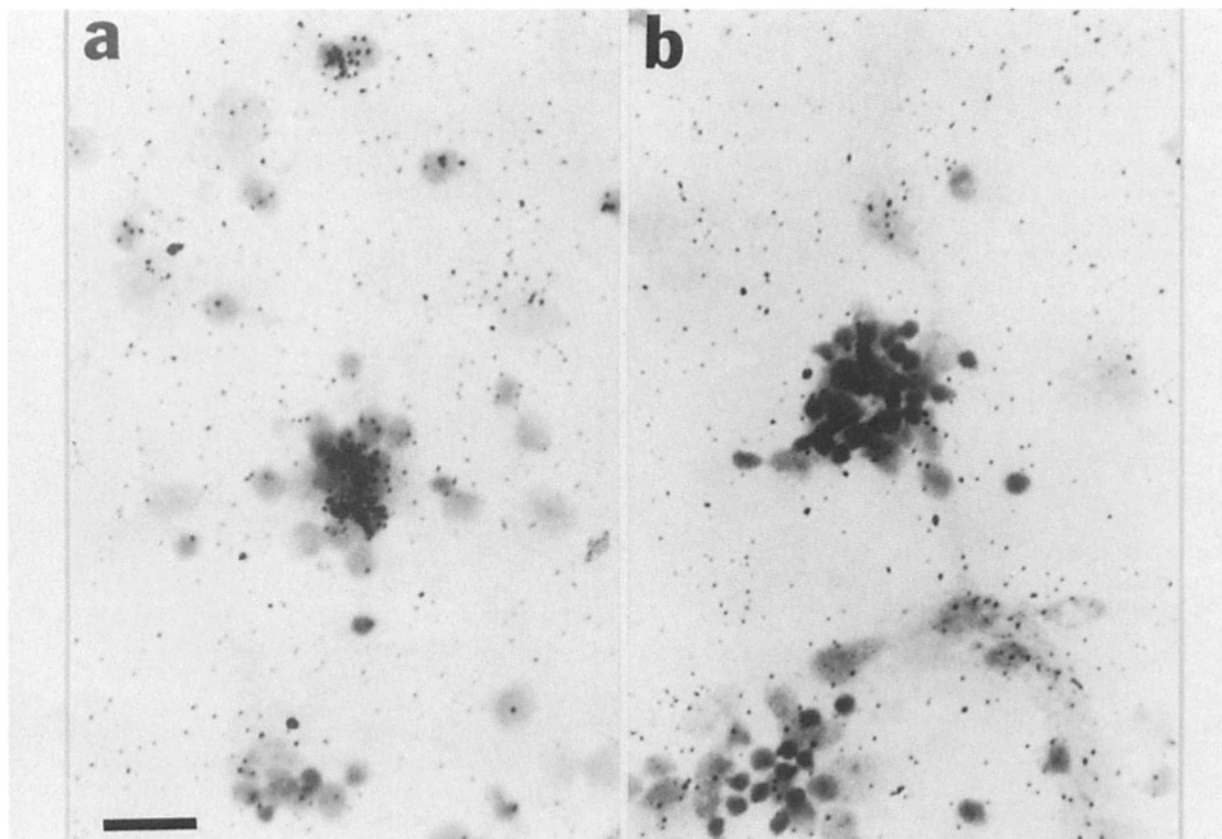


Figure 5. Autoradiography of ^{125}I -tPA binding to cerebellar granule neurons. Cerebellar cells were washed at pH 3 to displace endogenous tPA, and incubated 30 min with 1 IU of ^{125}I -tPA (a and b) and 50 IU unlabeled tPA (b). Small granule neurons at top and in center cluster (a) show specific binding of tPA, not seen on granule cell clusters in (b), where only nonspecific binding remains. Specific binding is seen only over granule neurons; glia and nonneuronal cells showed only nonspecific binding of ligand. Bar, $15 \mu\text{m}$.

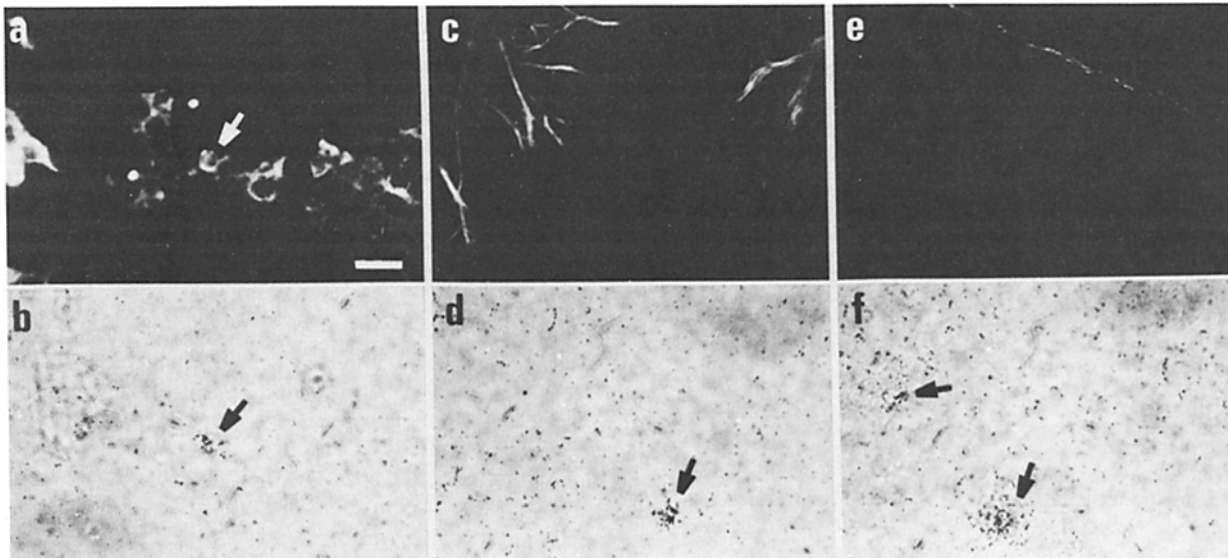


Figure 6. Neuronal cell surface labeling and ^{125}I -tPA binding. Cell identity and ^{125}I -tPA binding were monitored simultaneously by immunofluorescent antibody (a, c, and e) and bright field autoradiography (b, d, and f) of the same fields. Rabbit anti-Cbl-1 (a), a neuron-specific cell surface marker (37), was used to visualize cerebellar neurons in these cultures, and this antigen colocalized with ^{125}I -tPA binding (b). tPA binding (d) was not associated with astrocytes (c, glial fibrillary acidic protein). Very little fibronectin is seen in cerebellar cultures as visualized with rabbit anti-fibronectin (e) and fibronectin did not colocalize with the ^{125}I -tPA binding (f). Bar, 15 μm .

little ^{125}I -tPA binds to 6-d cerebellar cell cultures; suggesting that the receptors are saturated under these conditions. However, endogenously bound tPA should be freely reversible and subject to dilution of the free-tPA concentration. Repetitive media changes bring about a reduction in the free-tPA concentration, such that bound tPA is released into the medium and ^{125}I -tPA binding to these cells increases (data not shown). Similarly, Fig. 7 shows the effect of diluting the free-tPA concentration on release of cell-bound tPA. Released tPA is seen as an increase in tPA in the medium as assessed by the amidolytic assay, while there is a parallel loss of cell-bound tPA activity as indicated by the decrease in the relative number of fibrinolytic zones associated with the

cells. The dissociation rate constant (k_2) is 0.10 min^{-1} for the reversibility of endogenously bound tPA, when combined with the association constant $k_1 = 7 \times 10^8 \text{ M}^{-1} \text{ min}^{-1}$ calculated from K_{obs} (Fig. 3), the K_d (70 pM) obtained from these kinetic data agrees well with the K_d obtained from the Scatchard plot (Fig. 4).

Discussion

These studies have demonstrated the specific binding of tPA to the surface of developing granule neurons. This binding is rapid, saturable, reversible, and of high affinity; furthermore, tPA interacts with the cell surface in such a manner that tPA retains its full proteolytic activity. This localization of tPA to the cell surface provides an optimal site to facilitate cell movement.

Since DFP-tPA competes for the tPA receptor, the catalytic site is not involved in this binding, contrary to other reports of high affinity binding to endothelial cells where tPA is bound covalently via the active site, presumably to a plasminogen activator inhibitor (4, 5). The most likely portion of the tPA molecule to be involved in cell binding is the amino terminal one-half. This proposal is supported by our observation that only the 65,000- M_r form of tPA is displaced from the cells by low pH, although the 32,000- M_r catalytic carboxyl one-half of the tPA is seen in the culture medium (50). The amino-terminal portion of the tPA molecule contains several domains that are shared by other proteins and proteases (31). The finger domain characteristic of fibronectin (3), the growth factor domain that is similar to epidermal growth factor and is also found in uPA (3), the kringles (Nos. 1 and 2), similar to those in plasminogen and uPA (32, 35), are all candidates for this binding interaction; however, the failure of epidermal growth factor, uPA and plasminogen to compete effectively for binding make the

Table I. Specificity of ^{125}I -tPA Binding to Cerebellar Neurons

Nonlabeled protein	Amount	Molarity	Binding %
None	0	0	100
Murine tPA	32.5 IU	11.5 nM	0
Human tPA	32.5 IU	11.5	0
Murine urokinase	32.5 IU	11	106
Human urokinase	32.5 IU	10	110
Human thrombin	36 ng	11.5	94
Human plasminogen	110 ng	11.5	78
Murine DFP-tPA	75 ng	11.5	5
Murine denatured tPA	75 ng	11.5	100
Deglycosylated tPA	32.5 IU	11.5	0
Heparin	24 ng	11.5	93
Epidermal growth factor	0.15 ng	0.23	102
Epidermal growth factor	1.5 ng	2.3	86

Cerebellar cells were stripped of endogenous PA by mild acid treatment, washed, and incubated for 30 min at 20°C with murine ^{125}I -tPA (0.65 IU = 1.5 ng = 0.23 nM) in the absence or presence of an excess of nonlabeled competitors, as indicated. Percentage of (specific) binding was calculated relative to inhibition by a 50-fold molar excess of active nonlabeled tPA.

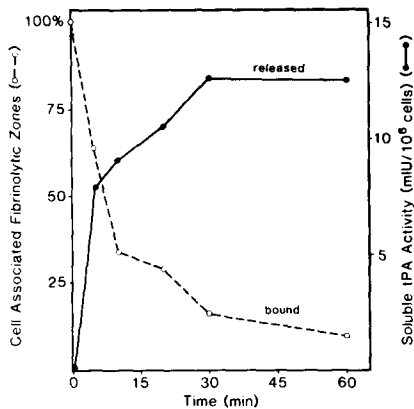


Figure 7. Displacement of cell-bound tPA by dilution at neutral pH. After 5 d of culture, cerebellar cells were switched to serum-free BEM overnight; then the medium was changed again, and the cultures were monitored simultaneously for zones of fibrinolytic activity indicative of cell-bound tPA (—○—), and for tPA released into the medium as monitored by the amidolytic assay (—●—) over the next 60 min.

growth factor domain and the kringle domains less likely candidates. Future studies with mutant tPA variants (13, 46) should clarify tPA's cell binding domain.

Some of the properties described here for tPA binding to granule neurons are similar to those reported for uPA binding by human monocytes and fibroblasts (2, 43, 47). High affinity binding with a $K_d = 4 \times 10^{-10}$ M and 60,000 binding sites/cell were found for single chain 55,000 M_r uPA binding to monocytes (43, 47), as well as endogenously saturated uPA receptors in A431 epidermoid cells (44) and fibroblasts (2). However, the tPA binding to granule neurons is specific for tPA, being blocked by antibody to mouse tPA (data not shown), and neither murine nor human uPA compete for binding to this granule cell tPA receptor. There have been very few previous reports of tPA binding, and these discuss binding to endothelial cells or fibroblasts. In these reports, tPA binding was either irreversible (18) and often covalently bound via the catalytic site (4, 5), or of low affinity ($K_d = 0.2 \mu\text{M}$) with which uPA competes (4). Thus, the tPA receptor on granule neurons appears distinct from these previous reports in its high affinity for tPA, reversibility and retention of enzymatic activity.

Autoradiography of the cell bound ¹²⁵I-tPA shows that the specific binding in these granule cell-enriched cultures is limited to small cells that have the nuclear morphology characteristic of granule neurons (Fig. 5), and bind tetanus toxin (22) and the neuronal specific antibody, anti-Cbl-1 (37), while being negative for the astroglia marker, glial fibrillary acidic protein (11) and epithelia marker, fibronectin (Fig. 6). Previous studies (22) have shown these small cells lack the oligodendroglia marker Og-1 (10). Specific binding was not detected over those few glial and nonneuronal cells in these cerebellar cultures. This finding agrees well with our previous localization of fibrinolytic zones to only granule neurons in these primary cell cultures (22). However, it is readily apparent (Fig. 5) that not all granule neurons in these cultures bind ¹²⁵I-tPA, similar to our observations with fibrin overlays (22). Thus, the binding of tPA appears to be restricted to a subpopulation of granule neurons. This subpopulation

may represent only those granule neurons actively involved in cell migration from the external to the internal granule cell layer of the cerebellum. This proposal is supported by observations of granule neurons migrating on neural fascicles in culture that bind antibody to tPA (39). If only migrating granule cells have cell bound tPA, this adds an important new level of regulation to the PA-PA inhibitor (15, 21, 22, 28, 29, 33, 34, 42) system; therefore, regulation of tPA receptor synthesis and membrane insertion may be the key steps.

The presence of tPA receptors on granule neurons may be advantageous to the cell for several reasons. Cell binding prevents diffusion of tPA away from the granule neuron. The tPA bound to the granule neuron receptor may be protected from inactivation by protease inhibitors present in the extracellular environment, as has been demonstrated for macrophage uPA (8) and monocytes (44). Furthermore, the possibility should not be overlooked that tPA may interact with its receptor in an autocrine system to elicit some second-messenger response within the cell. The tPA receptor provides a mechanism whereby cells can "arm themselves" with functionally active protease. Furthermore, the receptor may permit both a temporal regulation as to when a cell may have this activity, and a spatial regulation to provide for highly localized and concentrated areas of extracellular protease activity at sites of cell-cell and cell-matrix interaction. Thus, the process of cell and axonal migration may be regulated in part by the presence of a membrane tPA receptor and its occupancy by tPA.

The authors would like to express appreciation of Dr. P. G. McGuire's gift of the fibronectin finger domain, and to thank Ms. K. Christensen and Ms. S. Haffke for their excellent technical assistance.

These studies were supported in part by grants from the National Institutes of Health (NS-09818), and the National Science Foundation (BNS-86-07719). Some of these studies have been submitted by S. Verrall in partial fulfillment of the requirements for the Ph.D. degree at the University of Colorado Health Science Center.

Received for publication 22 November 1988 and in revised form 14 March 1989.

References

- Andrade-Gordon, P., and S. Strickland. 1986. Interaction of heparin with plasminogen activators and plasminogen: effect on the activation of plasminogen. *Biochemistry*. 25:4033-4040.
- Bajpai, A., and J. B. Baker. 1985. Cryptic urokinase binding sites on human foreskin fibroblasts. *Biochem. Biophys. Res. Commun.* 133:475-482.
- Banyai, L., A. Varadi, and L. Patthy. 1983. Common evolutionary origin of fibrin-binding structure of fibronectin and tissue-type plasminogen activator. *FEBS (Fed. Eur. Biochem. Soc.) Lett.* 163:37-41.
- Barnathan, E. S., A. Kuo, H. van der Keyl, K. McCrae, G. Larsen, and D. Cines. 1988. Tissue-type plasminogen activator binding to human endothelial cells. *J. Biol. Chem.* 263:7792-7799.
- Beebe, D. P. 1987. Binding of tissue plasminogen activators to human umbilical vein endothelial cells. *Thrombosis Res.* 46:241-254.
- Burton, K. 1965. A study of the conditions and mechanism of the diphenylamine reaction for the colorimetric estimation of deoxyribonucleic acid. *Biochem. J.* 62:315-322.
- Cajal, R. S. 1929. *Studies on Vertebrate Neurogenesis*. L. Guth, trans. Thomas Publ. Springfield, IL. 1960. 450 pp.
- Chapman, H. A., Jr., Z. Vavrin, and J. B. Hibbs, Jr. 1982. Macrophage fibrinolytic activity: identification of two pathways of plasmin formation by intact cells and of a plasminogen activator inhibitor. *Cell*. 28:653-662.
- Chen, Y. C., M. J. Hayman, and P. K. Vogt. 1977. Properties of mammalian cells transformed by temperature-sensitive mutants of avian sarcoma virus. *Cell*. 11:513-521.
- Collins, J., and N. W. Seeds. 1986. Oligodendroglia development in cell culture as monitored with a monoclonal antibody. *J. Neurosci.* 69:2635-2643.
- Dahl, D., and A. Bignami. 1976. Immunogenic properties of glial fibrillary

- acidic protein. *Brain Res.* 116:150-157.
12. Dano, K., P. A. Andreasen, J. Grondahl-Hansen, P. Kristensen, L. S. Nielsen, and L. Skriver. 1985. Plasminogen activators, tissue degradation and cancer. *Adv. Cancer Res.* 44:139-266.
 13. Gething, M.-J., B. Adler, J. Boose, R. Gerald, E. Madison, D. McGookey, R. Meidell, L. Roman, and J. Sambrook. 1988. Variants of human tissue plasminogen activator that lack specific structural domains of the heavy chains. *EMBO (Eur. Mol. Biol. Organ.) J.* 7:2731-2740.
 14. Gilboa, N., J. Erdman, and R. E. Urizar. 1982. Quantitative spectrophotometric assay of renal tissue plasminogen activator. *Kidney Int.* 22:80-83.
 15. Guenther, J., H. Nick, and D. Monard. 1985. A glia-derived neurite-promoting factor with protease inhibitory activity. *EMBO (Eur. Mol. Biol. Organ.) J.* 4:1963-1966.
 16. Hajjar, K., P. C. Harpel, E. A. Jaffe, and R. L. Nachman. 1986. Binding of plasminogen to cultured human endothelial cells. *J. Biol. Chem.* 261:11656-11662.
 17. Hawkins, R., and N. W. Seeds. 1986. Effect of proteases and their inhibitors on neurite outgrowth from neonatal sensory ganglia in culture. *Brain Res.* 398:63-70.
 18. Hoal, E. G., E. L. Wilson, and E. B. Dowdle. 1983. The regulation of tissue plasminogen activator activity by human fibroblasts. *Cell.* 34:273-279.
 19. Holmberg, L., B. Bladh, and B. Astedt. 1976. Purification of urokinase by affinity chromatography. *Biochim. Biophys. Acta.* 445:215-222.
 20. Jones, P., W. Benedict, S. Strickland, and E. Reich. 1975. Fibrin overlay methods for the detection of single transformed cells and colonies of transformed cells. *Cell.* 5:323-329.
 21. Krystosek, A., and N. W. Seeds. 1978. Plasminogen activator production by cultures of developing cerebellum. *Fed. Proc.* 37:1702.
 22. Krystosek, A., and N. W. Seeds. 1981. Plasminogen activator secretion by granule neurons in cultures of developing cerebellum. *Proc. Natl. Acad. Sci. USA.* 78:7810-7814.
 23. Krystosek, A., and N. W. Seeds. 1984. Peripheral neurons and Schwann cells secrete plasminogen activator. *J. Cell Biol.* 98:773-776.
 24. Krystosek, A., and N. W. Seeds. 1986. Normal and malignant cells, including neurons, deposit plasminogen activator on growth substrata. *Exp. Cell Res.* 166:31-46.
 25. Little, S. P., N. Bang, C. Harms, C. Marks, and L. Mattler. 1984. Functional properties of carbohydrate-depleted tissue plasminogen activator. *Biochemistry.* 23:6191-6195.
 26. Low, D. A., J. Baker, W. Koonce, and D. D. Cunningham. 1981. Released protease-nexin regulates cellular binding, internalization, and degradation of serine proteases. *Proc. Natl. Acad. Sci. USA.* 78:2340-2344.
 27. McKinney, M., B. Snider, and E. Richelson. 1983. Thrombin binding to human brain and spinal cord. *Mayo Clin. Proc.* 58:829-831.
 28. Monard, D., E. Niday, A. Limat, and F. Solomon. 1983. Inhibition of protease activity can lead to neurite extension in neuroblastoma cells. *Prog. Brain Res.* 58:359-363.
 29. Moonen, G., M. Grau-Wagemans, and I. Selak. 1982. Plasminogen activator-plasmin system and neuronal migration. *Nature (Lond.).* 298:753-755.
 30. Morrissey, J. H. 1981. Silver stain for proteins in polyacrylamide gels. *Anal. Biochem.* 117:307-310.
 31. Patthy, L. 1985. Evolution of the proteases of blood coagulation and fibrinolysis by assembly from modules. *Cell.* 41:657-663.
 32. Pennica, D., W. Holmes, W. Kohr, R. Harkins, G. Vehar, C. Ward, W. Bennett, E. Yelverton, P. Seeburg, H. Heyneker, D. Goeddel, and D. Collen. 1983. Cloning and expression of human tissue-type plasminogen activator cDNA in *E. coli*. *Nature (Lond.).* 301:214-221.
 33. Pittman, R. N. 1985. Release of plasminogen activator and a calcium-dependent metalloprotease from cultured sympathetic and sensory neurons. *Dev. Biol.* 110:91-101.
 34. Pittman, R. N., and P. H. Patterson. 1987. Characterization of an inhibitor of neuronal plasminogen activator released by heart cells. *J. Neurosci.* 7:2664-2673.
 35. Rickles, R., A. Darrow, and S. Strickland. 1988. Molecular cloning of complementary DNA to mouse plasminogen activator mRNA and its expression during F9 teratocarcinoma cell differentiation. *J. Biol. Chem.* 263:1563-1569.
 36. Rijken, D. C., and D. Collen. 1981. Purification and characterization of the plasminogen activator secreted by human melanoma cells in culture. *J. Biol. Chem.* 256:7036-7041.
 37. Seeds, N. W. 1975. Cerebellar cell surface antigens of mouse brain. *Proc. Natl. Acad. Sci. USA.* 72:4110-4114.
 38. Seeds, N. W., S. C. Haffke, and A. Krystosek. 1980. Cell migration and recognition in cerebellar reagregate cultures. *Tissue Culture in Neurobiology.* E. Giacobini, A. Vernadakis, and A. Shahar, editors. Raven Press, New York. 145-154.
 39. Seeds, N. W., K. Christensen, S. Haffke, and J. Schoonmaker. 1989. Granule neuron migration involves proteolysis. *Molecular Aspects of Development and Aging.* J. Lauder, ed. Allan R. Liss Inc. New York. In press.
 40. Sekiguchi, K., M. Fukada, and S. Hakomori. 1981. Domain structures of hamster plasma fibronectin. *J. Biol. Chem.* 256:6452-6462.
 41. Soreq, H., and R. Miskin. 1981. Plasminogen activators in the rodent brain. *Brain Res.* 216:361-374.
 42. Soreq, H., and R. Miskin. 1983. Plasminogen activator in the developing rat cerebellum. *Dev. Brain Res.* 11:149-158.
 43. Stoppelli, M. P., A. Corti, A. Soffientini, G. Cassani, F. Blasi, and R. Assoian. 1985. Differentiation-enhanced binding of the amino-terminal fragment of human urokinase plasminogen activator to a specific receptor on U937 monocytes. *Proc. Natl. Acad. Sci. USA.* 82:4939-4943.
 44. Stoppelli, M. P., C. Tacchetti, M. Cubellis, A. Corti, V. Hearing, G. Cassani, E. Appella, and F. Blasi. 1986. Autocrine saturation of pro-urokinase receptors on human A-431 cells. *Cell.* 45:675-684.
 45. Todd, A. S. 1959. The histological localization of fibrinolysin activator. *J. Pathol. Bacteriol.* 78:281-283.
 46. Van Zonneveld, A. J., H. Veerman, and H. Pannekoek. 1986. Autonomous functions of structural domains on human tissue type plasminogen activator. *Proc. Natl. Acad. Sci. USA.* 83:4670-4674.
 47. Vassalli, J. D., D. Baccino, and D. Belin. 1985. A cellular binding site for the M_r 55,000 form of the human plasminogen activator urokinase. *J. Cell Biol.* 100:86-92.
 48. Verrall, S. 1989. Ph.D. Thesis. University of Colorado Health Science Center, Denver, CO. 158 pp.
 49. Deleted in proof.
 50. Verrall, S., and N. W. Seeds. 1988. Tissue plasminogen activator release from mouse cerebellar granule neurons. *J. Neurosci. Res.* 21:420-425.