


RESEARCH

Open Access



Effect of different inner core diameters on structural strength of cannulated pedicle screws under various lumbar spine movements

Chia-Ming Chang¹, Yu-Shu Lai² and Cheng-Kung Cheng^{1,2*} 

*Correspondence:

ckcheng@ym.edu.tw

² Orthopaedic Device

Research Center, National

Yang-Ming University, No.

155, Sec. 2, Linong Street,

Taipei 112, Taiwan

Full list of author information

is available at the end of the
article

Abstract

Background: Currently, cannulated pedicle screws have been widely used in minimal invasive or navigation techniques. However, the stress distribution and the strength of different core diameters of cannulated screw are not clear. This study aimed to investigate the mechanical strength of cannulated screws with different inner core diameter under various lumbar spine movements using finite element analysis.

Results: The results showed that the von-Mises stress of a cannulated screw was larger than that of a solid screw in all loading conditions, especially above 2 mm in cannulated core diameter. In lateral bending, extension, and flexion, the maximum von-Mises stress was found approximate to the proximal thread for all types of screws. In rotation condition, the maximum von-Mises stress was located at the middle of the screw. Additionally, the difference in stiffness of instrumented levels was not significant among four screws under the same loading condition.

Conclusion: Cannulated screws could provide enough stability for the vertebral body fusion comparing to solid screws. The diameter of cannulated core is suggested not to exceed 2.0 mm.

Keywords: Cannulated screw, Finite element analysis, von-Mises stress, Stiffness

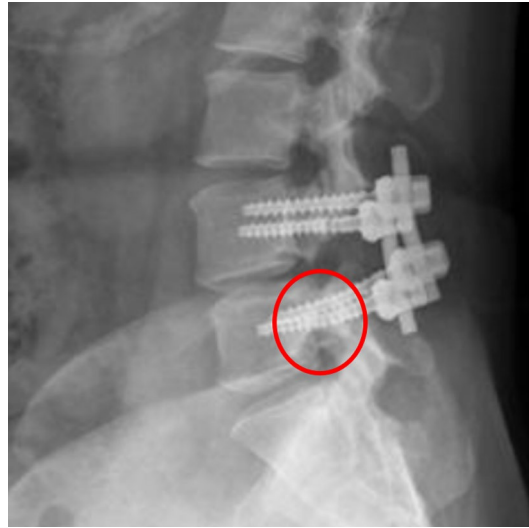
Background

Spinal fixation instrument is commonly used to improve the stability in spinal surgeries. Spinal fusion with fixation instruments has become more popular than the fusion without instruments [1, 2]. The major functions of these fixation instruments, especially pedicle screws, are enhancing fusion with bone grafts and correcting the spinal deformity,

The cannulated pedicle screw is an alternative design of traditional solid pedicle screw, which was developed to be applied in minimal invasive or navigation techniques and inserted following the guidance wire along the planned path [3]. Although 3.0 to 12.4% failure rate of a solid pedicle was reported in the literatures, [4–7], the prevalence of cannulated screw breakages remains unclear. From 2012 to 2014, we have reviewed seventy cases with cannulated pedicle screw in posterolateral lumbar fusion and found a total of eighteen screws breakage cases post-operatively (Table 1; Fig. 1). The failure rate of cannulated screws was about 18%, which seem to be larger than that of the solid screws

Table 1 Summary information of breakage cannulated pedicle screw

Variables	Value
Age (years old)	59.1 ± 10.3
Gender (male: female)	7: 11
Failure time (months)	4.7 ± 2.6
Failure location (neck: shaft)	14: 4

**Fig. 1** Radiographic of screw: radiographic examination showed the screw breakage (red circle)

in our experience. Of the twelve cases with cannulated screws breakage we reviewed, the breakages occurred at 4–5 months in average after receiving the posterolateral lumbar fusion surgeries (Approved by the National Yang-Ming University, YM105003E). In addition, among the eighteen broken screws, fourteen (78%) broke at either the first or the second thread counting from the screw head, and four (22%) broke at the middle of the screw.

Chen et al. [8] evaluated the pedicle screw breakage by conducting a retrieval analysis and found that the screw breakages were near the junction between screw head and shaft of the second thread in 75% of the patients. They also indicated that the highest stress was concentrated at the bone/screw interface. Although there was no discussion about the risk of cannulate screw breakage in spinal fixation, Glasgow et al. [9] raised concerns about the increased risk of screw breakage in metatarsal distal fixation using cannulated screws. Generally, there are two primary failure mechanisms leading to a screw breakage. One is due to the excessive torque to overcome the resistance during screw inserting into the pedicle as the consequences of small pilot hole or untapping hole in the cortical bone. High shear stress may be developed in the cross section of the screw when it is inserted under a significant resistance torque [10]. The other failure mechanism is bending of the screw as a cantilever with partial shaft location lodged in bone and a perpendicular load applied to the long axis of the screw.

Pedicle screw breakage is one of the most common complications in spinal fusion surgeries, especial for multi-levels fusion. Different inner diameter could influence the structure strength of the cannulate pedicle screw, and at least 1.5 mm would be necessary to work with the guidance wire. Therefore, the purpose of this study was to investigate the mechanical strength of cannulated screws with different inner core diameter under various lumbar spine movements using finite element analysis. We hypothesized that the core cannulated path may lead to stress concentrations and may become a source of crack that cause failure of screw. In addition, larger inner core diameters are associated with significant increased risk of screw breakage.

Methods

Finite element analysis models

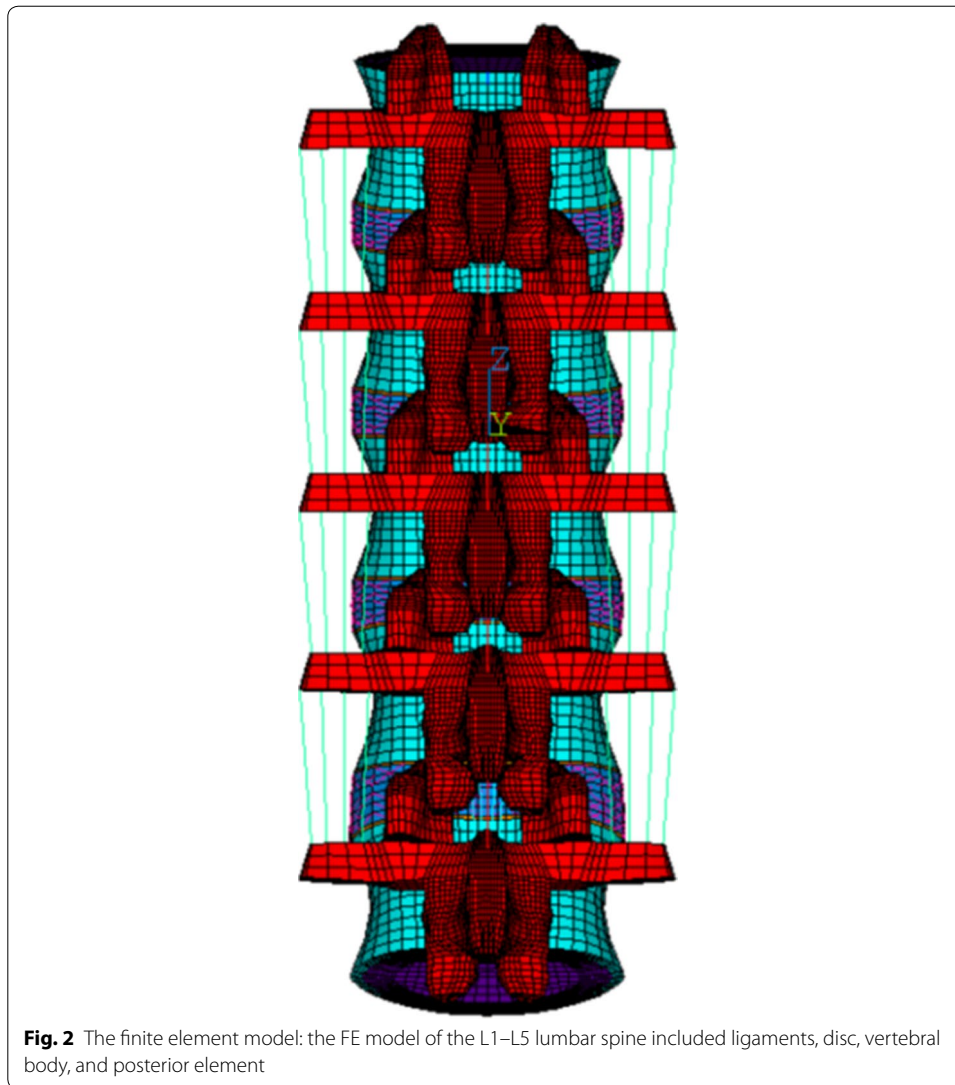
The intact lumbar spine model (L1–L5), which had been validated by comparison with *in vitro* tests and successfully used for biomechanical analyses [11–13], was reconstructed. The model consisted of vertebrae, intervertebral discs, superior and inferior facet articulating surfaces, and a number of ligaments including supraspinous, interspinous, ligamentum flavum, transverse, posterior longitudinal, anterior longitudinal, and capsular. Cable elements were used to simulate ligaments and the annulus fiber of discs, which were only activated in tension. The contact behavior of the facet articulation were simulated using three-dimensional contact elements (Fig. 2). In order to analyze the failure risks in the pedicle screws, the intact finite element (FE) model of the lumbar spine was implanted with screws, rods, and bone graft elements to simulate spinal fusion. The screw and rod were made of titanium alloy (Ti6Al4V) and modeled as 8-nodes tetrahedral elements. The material properties of all components were adopted from literatures (Table 2) [14–18].

The posterolateral fusion model of L3/L4, which is the most common involved level, was used to simulate changes in post-operative conditions. In the posterolateral fusion model, the bone graft elements were placed between two adjacent transverse processes to simulate perfect fusion. The average width, thickness, and length of the bone graft was 13.1, 11.3, and 41.6 mm, respectively, with a volume of 6163 mm³.

The pedicle screw was reconstructed with an outer diameter of 6.5 mm and a length of 45.0 mm which is the most commonly used size in clinical. A total of four screws were designed in this study, including a solid screw (S0), a screw combined with a 1.5 mm cannulated core path (S1.5), a screw combined with a 2.0 mm cannulated core path (S2.0), and a screw combed with a 2.5 mm cannulated core path (S2.5; Fig. 3). The 5.5 mm rod was applied to L3/L4 posterolateral fusion. Mesh convergence test for von Mises stress under flexion loading in all of these screw models were performed. The number of elements were 2625, 2603, 2689 and 2735 for the S0, S1.5, S2.0 and S2.5 respectively.

Boundary conditions

The FE method was used to analyze and compare the von-Mises stress performance among the four screws under physiological movements, including flexion, extension, lateral bending, and rotation. In the FE models, all degrees of freedom of the nodes at the bottom of L5 vertebral body were fixed. A pre-compressive loading of 150 N followed by moments of 10 Nm torsion, 10 Nm lateral bending, 10 Nm extension, and 10



Nm flexion were applied separately at the superior surface of the L1 using ANSYS 11.0 simulation software (ANSYS Inc., Canonsburg, PA, USA) [8, 11, 12]. The moment and axial load applied on the model represented the combined contributions in physiological responses and not to showed actually an average or peak value of each own during daily activities. The interface between the screw and bone as well as between the screw and rod were all set as bounded. The stiffness of the fused level of the four screws under different loading moment was calculated in the FE model, and the von-Mises stresses of screws were recorded.

Results

The von-Mises stress of the screws increased with the increasing inner core diameters (Table 3). Flexion and lateral bending resulted in a much higher stress level in all screw types compared to rotation and extension. In addition, the results also indicated that the

Table 2 The material properties specified in the finite element models [8, 12]

	Young's modulus (MPa)	Poisson's ratio	Cross-sectional area (mm ²)
Bony structure			
Cortex	12,000	0.3	–
Trabecular bone	100	0.2	–
Posterior element/graft bone	3500	0.25	–
Intervertebral disc			
Nucleus pulposus	1	0.49	–
Ground substance	4.2	0.45	–
Annular fiber	175	–	0.76
Ligaments			
Anterior longitudinal ligament	7.8	–	63.7
Posterior longitudinal ligament	10	–	20
Intertransverse ligament	10	–	1.8
Ligamentum flavum	15	–	40
Interspinous ligament	10	–	40
Suprespinous ligament	8	–	30
Capsular ligament	7.5	–	30
Implants			
Bone graft	3500	0.25	–
Titanium alloy	180,000	0.28	–

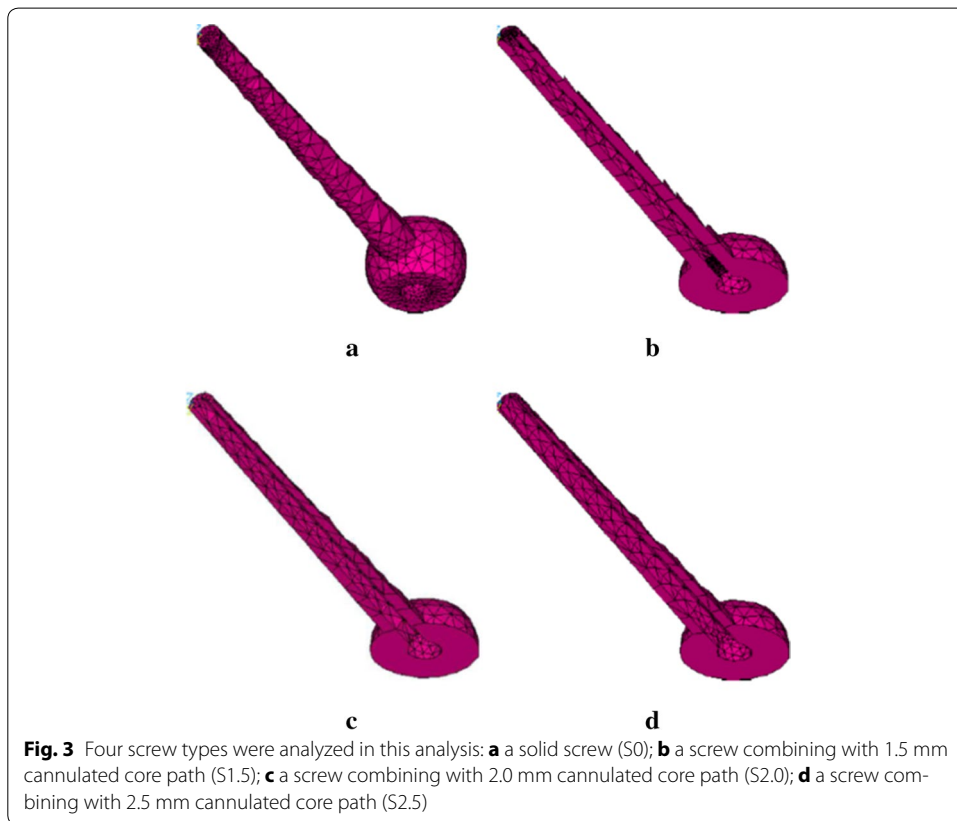


Table 3 The maximum von-Mises stress (MPa) on the screw of S0, S1.5, S2.0 and S2.5 due to four loading conditions

Loading	Screw							
	S0		S1.5		S2.0		S2.5	
	Left	Right	Left	Right	Left	Right	Left	Right
Rotation								
L3	4.6	8.2	6.2	11.0	5.5	9.7	6.5	11.3
L4	5.6	7.5	4.8	4.8	8.5	20.3	10.5	21.0
Lateral bending								
L3	46.7	50.6	47.7	58.4	56.7	56.7	62.2	54.7
L4	45.0	54.7	47.7	68.3	51.1	69.2	60.8	77.5
Extension								
L3	61.1		47.4		58.0		62.9	
L4	71.2		42.8		51.5		57.8	
Flexion								
L3	61.1		62.0		71.6		78.1	
L4	71.2		74.0		82.9		89.6	

lower pedicle screw (L4) resulted in a larger stress than the upper screw (L3) under general loading conditions, except for the extension movement.

In rotation, the maximum von-Mises stress of the S1.5, S2.0, and S2.5 increased by 87.5, 150.0, and 162.5% compared to the S0. The maximum von-Mises stress concentrated at the middle of the lower screw. In lateral bending, the maximum von-Mises stress of the S1.5, S2.0, and S2.5 increased by 23.6, 25.4, and 41.8% compared to the S0. The maximum von-Mises stress occurred at the proximal thread of the lower screw. In extension, the maximum von-Mises stress of the S1.5, S2.0, and S2.5 increased by 0, 18.4, and 28.6% compared to the S0. The maximum von-Mises stress was found at the proximal thread of the upper screw. In flexion, the maximum von-Mises stress of the S1.5, S2.0, and S2.5 increased by 4.2, 16.9, and 26.8% compared to the S0. The maximum von-Mises stress occurred at the proximal thread of the lower screw (Fig. 4).

The stiffness of different screw at the fused level under each loading condition was showed in Table 4. In the same loading condition, the difference of fused level stiffness was the least among the four screws.

Discussion

The cannulated screws have become increasingly popular in orthopedic surgeries, including foot, ankle, hip, small joint, and spine fixation over past 10 years. However, the main concern of using a cannulated screw is that its mechanical strength is lower than that of a solid screw with a similar diameter [19]. Yang et al. [20] analyzed the axial stiffness and maximum failure strength of cannulated locking screws and solid locking screws under bending moments using in vitro tests. They showed that the solid screws had higher stiffness and axial failure loads than the cannulated screws. Yang et al. also suggested that fixations with solid locking screws offered more stability compared with locking screws with regarding to axial stiffness and failure strength in unstable proximal tibial fractures. However, the difference of mechanical strength in cannulated and

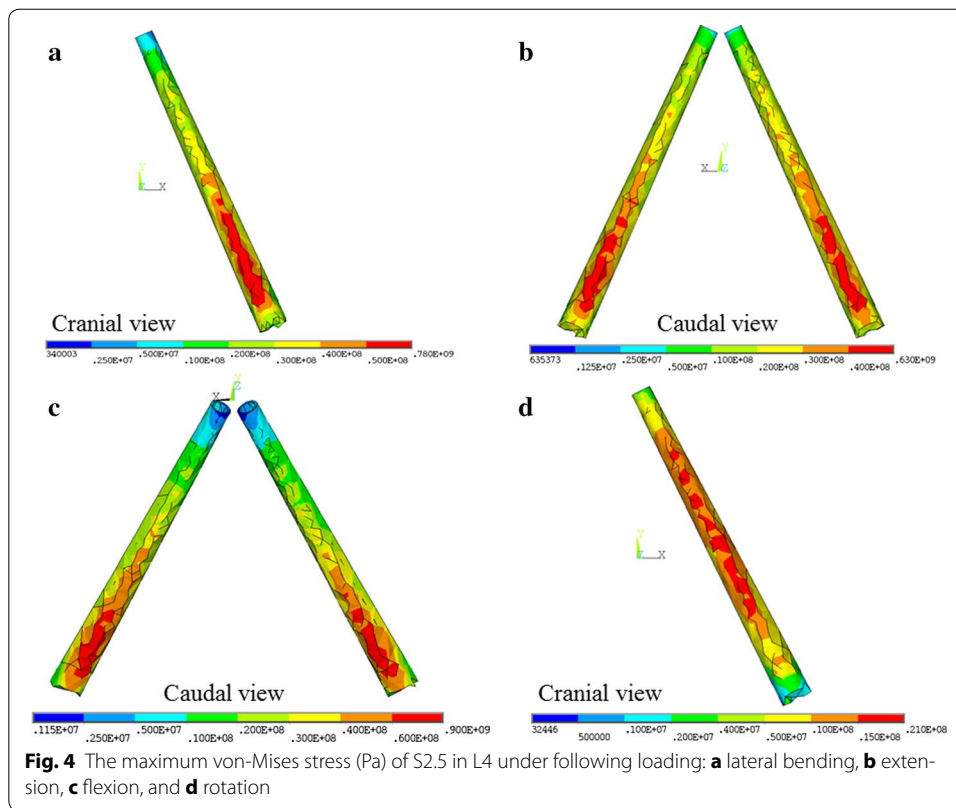


Table 4 The stiffness (Nm/degrees) of intact spine, S0 screw, S1.5 screw, S2.0 screw, and S2.5 screw model in four loading conditions

Groups loading	Intact	S0	S1.5	S2.0	S2.5
Rotation	4.75	5.40	5.39	5.41	5.41
Lateral bending	3.05	9.46	9.48	9.38	9.48
Extension	5.40	21.02	20.96	20.69	20.38
Flexion	3.27	10.75	10.95	10.77	11.03

solid screws is not clear. Hence, the FE models were created to evaluate this difference, and the failure risks of cannulated screw with different inner core diameter were evaluated by quantifying the von-Mises stress of the screws under spinal axial rotation, lateral bending, extension, and flexion conditions.

The primary function of pedicle screw system is to stabilize the spine and share the physical loading. If the pedicle screws were broken in the early postoperative period, patients with failed constructs, which may develop progressive kyphosis subsequently, could have poor functional outcomes, progressive back pain, and may require additional surgical procedure for instrument removal [21]. The cannulated screw breakage was also reported in humerus and femoral fracture fixation [22–24].

The FE analysis indicated that the inner core diameter could affect the stress distribution of the whole screw. The maximum von-Mises stress increased as the inner core diameter increased. According to the results, the maximum von-Mises stress of the screw occurred at the caudal side of the screw during flexion, extension and laterals

bending, but concentrated at middle part during torsion (Fig. 4). The largest maximum von-Mises stress of all screws concentrated in flexion condition while the smallest maximum stress occurred in rotation. Compared to the S0 screw among the four loading conditions, the von-Mises stress of the S2.5 and the S2.0 screws were increased obviously, but the von-Mises stress the S1.5 screw was only increased in lateral bending and rotation. The stresses of the three cannulated screws were increased over 80% in torsion condition. Nevertheless, the loading of the screw was low in rotation, even if the von-Mises stress of the S2.5 screw increased by 160%, this value is still lower than the stress of a solid screw in flexion and extension condition. Therefore, the possibility of torsion failure type in the cannulated pedicle screw is relatively lower than the solid screw, and this result is compliance with the reduced rate of middle part screw breaking in clinical cases. The analysis showed that the maximum von-Mises stress of all groups did not reach the yield strength, but relatively short fatigue life of screw if it is under high stress amplitude. Hou et al. [25] found that the fatigue life of the commercially available titanium tibia locking screws decreased as the stress increased. In the current analyses, the stress of the S2.0 and the S2.5 screw under four loading conditions were larger than the solid pedicle screw, indicating that the fatigue life will be consequentially reduced. Therefore, before patients receive a solid fusion, the failure possibility of cannulated screws is higher than that of normal screws. Besides, Rolmann et al. [26] indicated that the spinal instrumentation was highly loaded in daily activity with good fixation. This may explain the fatigue loading and screw failure even with a solid bone-implant interface. Although the increased diameters of cannulated core caused high stress along the screw, the stiffness of the pedicle screw structure was not affected by the cannulated core (Table 4). Therefore, the cannulated screw could provide enough stability for vertebral body fusion, and the diameter of cannulated core over 2 mm should not be used.

In this study, the stress of screws was analyzed to identify the failure locations of clinical cases. Besides, the diameter of cannulated core affecting the maximum stress of pedicle screw under different loading conditions has been shown. Several limitations to this FE model analyses are noted:

1. The screw model in this study was designed according to commercial products. The diameter of the cannulated core is the only factor being discussed. Other factors that might affect the test result, such as the screw type, pitch, and thread's shape, will be investigated in the future.
2. Single-level instrumented lumbar posterolateral fusion was simulated in this model. Multi-levels posterolateral fusions were not analyzed in this study.
3. The material properties of the vertebral body were assumed to be isotropic and homogenous.
4. The loading conditions were not truly physiological condition because this model did not account for the mechanical effects of muscle contraction.

Although the models incorporated some assumptions and limitations, the results showed a similar pattern and trend to previous studies and clinical cases.

Conclusions

Because the diameter of a guide pin defines its stiffness, it is important for the cannulated path of the screw to accommodate as much width as possible. A wide diameter guide pin could restrict bending when it is inserted. However, this study demonstrated that cannulation width caused a raise of stress concentration at the proximal screw shaft, and it could further increase the fatigue failure risks. From the results, the diameter of the cannulated core is suggested not to exceed 2.0 mm. Even a screw with a diameter of around 1.5 mm could decrease the effects of the loss of a screw's strength.

Authors' contributions

CM, YS and CK involved in writing the manuscript. CM, ST and YS performed the FE analysis. CK organized and coordinated this study. All authors read and approved the final manuscript.

Author details

¹ Department of Biomedical Engineering, National Yang-Ming University, No. 155, Sec. 2, Linong Street, Taipei 112, Taiwan.

² Orthopaedic Device Research Center, National Yang-Ming University, No. 155, Sec. 2, Linong Street, Taipei 112, Taiwan.

Acknowledgements

This work was supported by the Ministry of Science and Technology [Grant Number 103-2320-B-010-004-MY3].

Competing interests

The authors declare that they have no competing interests.

Availability of data and materials

The datasets used and analyzed during the current study are presented in the main paper.

Consent for publication

Not applicable.

Ethics approval and consent to participate

The review of radiographic data in the Introduction was approved by the National Yang-Ming University (YM105003E).

Publisher's Note

Springer Nature remains neutral with regard to jurisdictional claims in published maps and institutional affiliations.

Received: 3 April 2017 Accepted: 4 August 2017

Published online: 15 August 2017

References

1. Suk SI, Kim WJ, Lee SM, Kim JH, Chung ER. Thoracic pedicle screw fixation in spinal deformities: are they really safe? *Spine*. 2001;26(18):2049–57.
2. Wu CH, Kao YH, Yang SC, Fu TS, Lai PL, Chen WJ. Supplementary pedicle screw fixation in spinal fusion for degenerative spondylolisthesis in patients aged 65 and over: outcome after a minimum of 2 years follow-up in 82 patients. *Acta Orthop*. 2008;79(1):67–73.
3. Weise L, Suess O, Picht T, Kombos T. Transpedicular screw fixation in the thoracic and lumbar spine with a novel cannulated polyaxial screw system. *Med Devices (Auckl)*. 2008;1:33–9.
4. Dickman CA, Fessler RG, MacMillan M, Haid RW. Transpedicular screw-rod fixation of the lumbar spine: operative technique and outcome in 104 cases. *J Neurosurg*. 1992;77(6):860–70.
5. Jutte PC, Castelein RM. Complications of pedicle screws in lumbar and lumbosacral fusions in 105 consecutive primary operations. *Eur Spine J*. 2002;11(6):594–8.
6. Matsuzaki H, Tokuhashi Y, Matsumoto F, Hoshino M, Kiuchi T, Toriyama S. Problems and solutions of pedicle screw plate fixation of lumbar spine. *Spine*. 1990;15(11):1159–65.
7. Niu CC, Chen WJ, Chen LH, Shih CH. Reduction-fixation spinal system in spondylolisthesis. *Am J Orthop*. 1996;25(6):418–24.
8. Chen CS, Chen WJ, Cheng CK, Jao SH, Chueh SC, Wang CC. Failure analysis of broken pedicle screws on spinal instrumentation. *Med Eng Phys*. 2005;27(6):487–96.
9. Glasgow MT, Naranja RJ Jr, Glasgow SG, Torg JS. Analysis of failed surgical management of fractures of the base of the fifth metatarsal distal to the tuberosity: the Jones fracture. *Foot Ankle Int*. 1996;17(8):449–57.
10. Uthoff HK. Mechanical factors influencing the holding power of screws in compact bone. *J Bone Joint Surg Br*. 1973;55(3):633–9.
11. Chen CS, Cheng CK, Liu CL. A biomechanical comparison of posterolateral fusion and posterior fusion in the lumbar spine. *J Spinal Disord Tech*. 2002;15(1):53–63.
12. Chen CS, Cheng CK, Liu CL, Lo WH. Stress analysis of the disc adjacent to interbody fusion in lumbar spine. *Med Eng Phys*. 2001;23(7):483–91.

13. Liu CL, Zhong ZC, Hsu HW, Shih SL, Wang ST, Hung C, Chen CS. Effect of the cord pretension of the Dynesys dynamic stabilisation system on the biomechanics of the lumbar spine: a finite element analysis. *Eur Spine J*. 2011;20(11):1850–8.
14. Goel VK, Kim YE, Lim TH, Weinstein JN. An analytical investigation of the mechanics of spinal instrumentation. *Spine*. 1988;13(9):1003–11.
15. Goel VK, Kong W, Han JS, Weinstein JN, Gilbertson LG. A combined finite element and optimization investigation of lumbar spine mechanics with and without muscles. *Spine*. 1993;18(11):1531–41.
16. Kim YE: An analytical investigation of ligamentous lumbar spine mechanics. PhD dissertation University of Iowa, Iowa City (IA); 1988.
17. Spilker RL. Mechanical behavior of a simple model of an intervertebral disk under compressive loading. *J Biomech*. 1980;13(10):895–901.
18. Wu HC, Yao RF. Mechanical behavior of the human annulus fibrosus. *J Biomech*. 1976;9(1):1–7.
19. Bava E, Charlton T, Thordarson D. Ankle fracture syndesmosis fixation and management: the current practice of orthopedic surgeons. *Am J Orthop*. 2010;39(5):242–6.
20. Yang SW, Kuo SM, Chang SJ, Su TS, Chen HH, Renn JH, Lin TS. Biomechanical comparison of axial load between cannulated locking screws and noncannulated cortical locking screws. *Orthopedics*. 2013;36(10):e1316–21.
21. Cho DY, Lee WY, Sheu PC. Treatment of thoracolumbar burst fractures with polymethyl methacrylate vertebroplasty and short-segment pedicle screw fixation. *Neurosurgery*. 2003;53(6):1354–61.
22. Chen A, Willis Owen C, Akhtar K, Kamineni S. Failure of asnis iii 5.0 mm cannulated screw: a case report. *Cases J*. 2010;7(3):9.
23. Mooney JF, Simmons TW. A previously unreported complication of the AO cannulated 4.0-and 4.5-mm screw systems: a review of three cases. *J South Orthop Assoc*. 2002;12(3):160–2.
24. Robb JE, Annan IH, Macnicol MF. Guidewire damage during cannulated screw fixation for slipped capital femoral epiphysis. *J Pediatr Orthop B*. 2003;12(3):219–21.
25. Hou SM, Wang JL, Lin J. Mechanical strength, fatigue life, and failure analysis of two prototypes and five conventional tibial locking screws. *J Orthop Trauma*. 2002;16(10):701–8.
26. Rohlmann A, Graichen F, Weber U, Bergmann G. 2000 Volvo Award winner in biomechanical studies: monitoring in vivo implant loads with a telemeterized internal spinal fixation device. *Spine*. 2000;25(23):2981–6.

Submit your next manuscript to BioMed Central
and we will help you at every step:

- We accept pre-submission inquiries
- Our selector tool helps you to find the most relevant journal
- We provide round the clock customer support
- Convenient online submission
- Thorough peer review
- Inclusion in PubMed and all major indexing services
- Maximum visibility for your research

Submit your manuscript at
www.biomedcentral.com/submit

