

## Original Article

**Cite this article:** Lu B, Zeng W, Li Z, Wen J (2021). Risk factors of post-traumatic stress disorder 10 years after Wenchuan earthquake: a population-based case-control study. *Epidemiology and Psychiatric Sciences* 30, e25, 1–9. <https://doi.org/10.1017/S2045796021000123>

Received: 16 August 2020

Revised: 4 February 2021

Accepted: 15 February 2021

### Keywords:

Case-control study; post-traumatic stress disorder; risk factors; Wenchuan earthquake

### Author for correspondence:

Jin Wen, Email: [huaxiwenjin@163.com](mailto:huaxiwenjin@163.com)

# Risk factors of post-traumatic stress disorder 10 years after Wenchuan earthquake: a population-based case-control study

Bingqing Lu<sup>1,2</sup> , Wenqi Zeng<sup>1</sup>, Zhuyue Li<sup>3</sup> and Jin Wen<sup>1</sup>

<sup>1</sup>Institute of Hospital Management, West China Hospital, Sichuan University, Chengdu 610041, China; <sup>2</sup>Hospital of Chengdu University of Traditional Chinese Medicine, Chengdu 610041, China and <sup>3</sup>West China Hospital/West China School of Nursing, Sichuan University, Chengdu 610041, China

## Abstract

**Aims.** To investigate the prevalence of post-traumatic stress disorder (PTSD) symptoms in the hard-hit areas 10 years after the Wenchuan earthquake, and explore the risk factors of long-term PTSD among Wenchuan earthquake survivors.

**Methods.** A matched case-control study was conducted. The involving participants were from the hard-hit areas 10 years after the Wenchuan earthquake. The collected information includes demographic characteristics, socioeconomic status, behaviour habits, earthquake exposure, perceived social support, physical health and mental health. Mental health status was measured using the PTSD Checklist-Civilian Version (PCL-C). Respondents with PCL-C score  $\geq 38$  were classified as cases, and then the cases and controls were matched based on age ( $\pm 3$  years) and community location according to a ratio of 1:3.

**Results.** We obtained 86 cases and 258 controls. After controlling for confounding factors, it was found that lower income (OR 2.42; 95% CI 1.16–5.03), chronic diseases (OR 3.00; 95% CI 1.31–6.88) and death of immediate families in the earthquake (OR 7.30; 95% CI 2.36–22.57) were significantly associated with long-term PTSD symptoms.

**Conclusion.** Even 10 years after the Wenchuan earthquake, the survivors in the hard-hit areas still suffered from severe mental trauma. Low income, chronic diseases and death of immediate families in the earthquakes are significantly associated with long-term PTSD symptoms. Interventions by local governments and health institutions to address these risk factors should be undertaken to promote the health of survivors.

## Introduction

China is located in an earthquake-prone area, and earthquakes in Chinese mainland account for about one-fourth to one-third of the world's earthquakes. According to statistics, from 1950 to 2017, a total of 722 independent earthquakes occurred in Chinese mainland, resulting in direct economic losses of US\$223.7 billion and 352 282 deaths (He *et al.*, 2018). On 12 May 2008, an earthquake measuring 8.0 on the Richter scale hit Wenchuan County in western China's Sichuan province, killing or injuring more than 400 000 people and destroying more than 30 million houses (Zhang *et al.*, 2012; Peng *et al.*, 2018). After the Wenchuan earthquake, the Chinese government carried out the rescue with a shocking response speed and put all efforts across the country to complete the reconstruction 3 years after the earthquake (Lin *et al.*, 2014; Park and Wang, 2017). However, this great catastrophe has resulted in not only mass physically injured, but also survivors' mental disorder. One and 3 months after the Wenchuan earthquake, the prevalence of post-traumatic stress disorder (PTSD) symptoms among adult survivors in the hard-hit areas was 62.8 and 39.6%, respectively (Wang *et al.*, 2011; Cheng *et al.*, 2015). Three years after the earthquake, when reconstruction has been completed, 8.8% of survivors in the hard-hit areas still have PTSD symptoms (Wen *et al.*, 2012). What is worse, a cross-sectional survey 8 years after the earthquake demonstrated that the prevalence of PTSD symptoms among survivors in the hard-hit areas was 11.8% (Guo *et al.*, 2017). It is evident that long-term mental health after a major disaster should be paid much attention to, and PTSD is a terrible trouble among survivors.

PTSD is a common psychiatric disorder after traumatic exposure (Shalev *et al.*, 2017). The lifetime prevalence of PTSD ranges from 0.5 to 14.5% and varies across regions of the world due to the nature of trauma, the intensity of exposure and the intensity of post-traumatic social support (Uniyal *et al.*, 2020). About 50% of PTSD symptoms last for more than 3 months and develop into a chronic disease (Watson, 2019). At present, there are few studies on the long-term PTSD of Wenchuan earthquake survivors. The trajectories of the course of PTSD are complex and do not always follow a linear course (Bryant, 2019). Chronic PTSD (PTSD with a course of more than 3 months) (Shalev *et al.*, 2017) causes considerable disease burden,

© The Author(s), 2021. Published by Cambridge University Press. This is an Open Access article, distributed under the terms of the Creative Commons Attribution-NonCommercial-NoDerivatives licence (<http://creativecommons.org/licenses/by-nc-nd/4.0/>), which permits non-commercial re-use, distribution, and reproduction in any medium, provided that no alterations are made and the original article is properly cited. The written permission of Cambridge University Press must be obtained prior to any commercial use and/or adaptation of the article.

social and occupational injuries, and might increase the risk of other mental disorders and even suicide (Merz *et al.*, 2019; Hayashi *et al.*, 2021).

The purpose of this study is to investigate the prevalence of chronic PTSD among survivors aged 16 and above in the hard-hit areas 10 years after Wenchuan earthquake, and reveal the risk factors of long-term chronic PTSD after the disaster by comprehensively exploring the relationship between sociodemographic factors, earthquake exposure factors, physical health, social support and PTSD of survivors. This helps to better understand the long-term impact of major natural disasters on the mental health of survivors and helps local governments and medical institutions to identify high-risk groups with PTSD.

## Methods

### Study design and population

A matched case-control design was used in this study, and the data were from a cross-sectional survey 10 years after the Wenchuan earthquake. From May to June 2018, the survey collected information on sociodemographic factors, earthquake exposure factors, social support, physical health and mental health of 1054 survivors in the hard-hit areas through four-stage sampling. The four-stage sampling procedure was as follows: (1) randomly select three of the 39 hard-hit areas assessed by the Ministry of Finance of China in Sichuan Province, namely Shifang County, Wenchuan County and Mianzhu County; Wenchuan is located in the epicentre, with a seismic intensity of IX–XI; Mianzhu is 18 km away from the epicentre and the seismic intensity was IX–X; Shifang is 28 km away from the epicentre, and the seismic intensity was VIII–XI; (2) randomly select four towns within each of the counties; (3) randomly select two villages within each of the towns; and (4) select 46 earthquake survivors within each of the villages and conduct a face-to-face questionnaire survey. Residents who were 16 years old or older at the time of investigation and had experienced the Wenchuan earthquake met the inclusion criteria, while those with hearing or language impairment were excluded.

Cases were defined as those with positive PTSD screening, that is, those with a PTSD Checklist-Civilian Version (PCL-C) score of 38 or above. Cases were matched to controls in a 1:3 ratio, based on community location and age ( $\pm 3$  years).

### Ethical approval

Ethical approval was obtained from the Institutional Review Board of West China Hospital in Sichuan University. Before filling out the questionnaire, the investigators explained the investigation purpose, questionnaire content and information security measures to each respondent and obtained informed consent. For those under the age of 18, the consent of their guardian was obtained at the same time.

### Variables and measurements

The questionnaire included four parts: demographic information, earthquake exposure information, Multidimensional Scale of Perceived Social Support (MSPSS) and PCL-C.

Demographic information form included gender, age, home address, ethnicity (Han/Tibetan/Qiang/others), education (illiteracy/primary school/junior high school/high school/junior college

or above), occupation (farmer/worker/businessman/civil servant/student/unemployed/others), annual household income (<5000/5000–20 000/20 000–50 000/ $\geq 50 000$  RMB), purchasing any kind of medical insurance (including new rural cooperative medical insurance, medical insurance for urban workers, medical insurance for urban residents and commercial insurance) (Yes/No), playing mahjong – a common recreational activity in rural areas of Sichuan Province (Yes/No), drinking alcohol (Yes/No), 2-week illness (Yes/No), having chronic disease (Yes/No). Chronic disease was defined as at least one of the following diseases: chronic cardiovascular and cerebrovascular diseases (such as hypertension and heart disease), chronic digestive system diseases (such as hepatitis and gastric ulcer), chronic respiratory system diseases (such as asthma and bronchitis), chronic genitourinary system diseases (such as nephritis and kidney stones), chronic joint diseases (such as rheumatoid arthritis and lumbar disc herniation), diabetes, tumours, etc. The above chronic diseases should have been diagnosed by doctors before the investigation and be with current symptoms or treatments. We hypothesised that all of these demographic factors are associated with the development of PTSD. For instance, playing mahjong helps increase interpersonal communication so as to maintain the survivors' mental health (Tsang *et al.*, 2016); alcohol use might interfere with the emotional processing of trauma survivors and increase susceptibility to PTSD (Straus *et al.*, 2018); and 2-week illness might exacerbate psychological stress (Ohrnberger *et al.*, 2017).

Earthquake exposure variables were collected as follows: (1) house damage in the earthquake (not collapsed/collapsed), (2) property loss in the earthquake ( $\geq 80$ / $< 80$ %), (3) buried in the earthquake (Yes/No), (4) injured in the earthquake (Yes/No), (5) witnessing the injury in the earthquake (Yes/No), (6) witnessing the death in the earthquake (Yes/No), (7) relatives injured during the earthquake (Yes/No), (8) immediate families (parents/spouses/children) disabled during the earthquake (Yes/No), (9) immediate families (parents/spouses/children) died during the earthquake (Yes/No).

Perceived social support was measured by MSPSS (Zimet, 1988), which includes 12 items to assess individual satisfaction with emotional and practical support from family, friends and other special people. The total score ranges from 12 to 84, and a higher score means a higher perceived level of social support. Moreover, the Chinese version of MSPSS has good retest reliability and internal consistency (Gao *et al.*, 2020). The Internal consistency (Cronbach's  $\alpha$  coefficient) for this sample was 0.95.

PTSD symptoms were measured by PCL-C (Weathers *et al.*, 1993). This 17-item self-report scale is based on the Diagnostic and Statistical Manual of Mental Disorders, Fourth Edition (DSM-IV) (American Psychiatric Association, 1994) and can effectively assess the severity of survivors' re-experience, avoidance, negative emotions and over-excitement related to traumatic events (Zhang *et al.*, 2011). In this study, survivors were asked to indicate the degree of each symptom related to the Wenchuan earthquake, ranging from 1 (nothing at all) to 5 (extremely severe). The total score ranges from 17 to 85, and survivors with a score of 38 or higher were classified as likely to have PTSD. Previous studies have demonstrated the reliable accuracy and validity of PCL-C in screening for PTSD (Wen *et al.*, 2012; Zhou *et al.*, 2015). Items in the scale were appropriately modified to make it anchor to the Wenchuan earthquake, such as 'Repeated, disturbing memories, thoughts or images of the

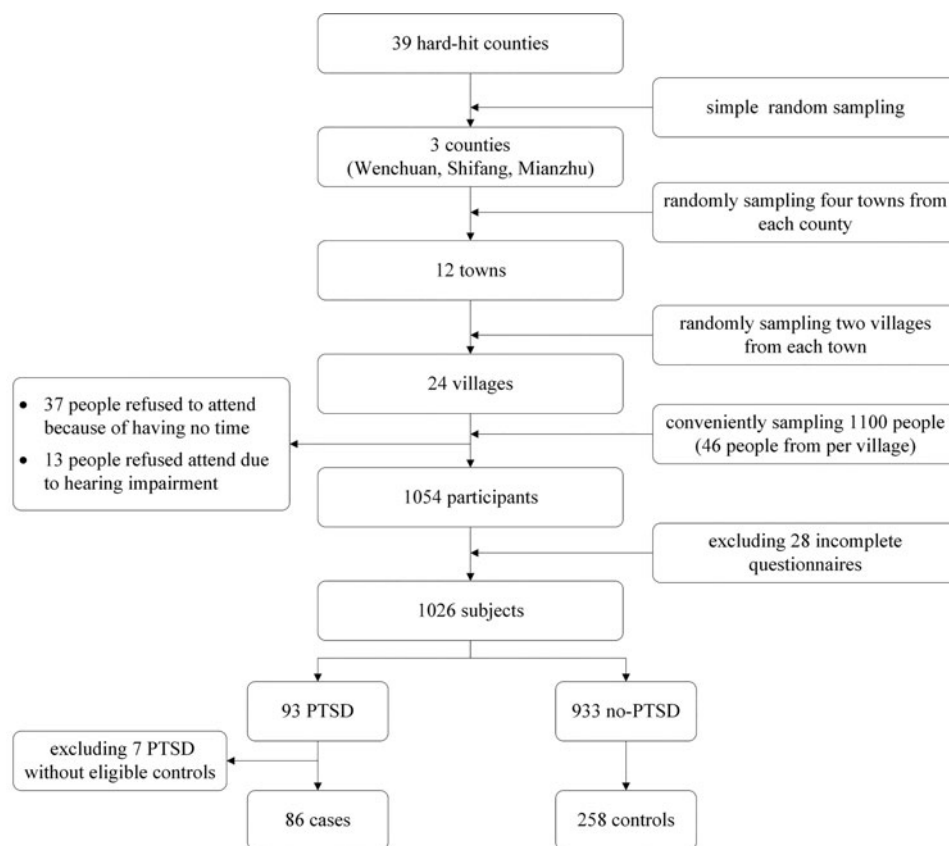


Fig. 1. Flow chart of sampling.

Wenchuan earthquake experience?', 'Repeated, disturbing dreams of the Wenchuan earthquake experience?' The internal consistency (Cronbach's  $\alpha$  coefficient) of PCL-C in this study was 0.89.

### Sample size

After a cross-sectional study, we got 1054 questionnaires. Among the respondents, we identified 93 cases with PTSD symptoms. To increase statistical power, controls were matched to cases at a ratio of 3:1 by location and age ( $\pm 3$  years). Finally, 86 cases and 258 controls were successfully matched and analysed in this study.

### Quality control

We recruited graduate students proficient in Mandarin and Sichuan dialect from West China Medical School of Sichuan University and conducted rigorous investigator training for them. To ensure the data quality, each questionnaire was reviewed by two investigators. Besides, EpiData was used for double data entry and consistency checks.

### Statistical analysis

Frequencies, percentages, means and standard deviations were calculated for descriptive analysis. Statistical differences in characteristics between cases and controls were examined using the Mann-Whitney  $U$  test for MSPSS scores and Pearson  $\chi^2$  tests, Fisher exact tests for categorical variables. Conditional logistic regression was used in univariate and multivariate analyses to account for the matched design. To control all the potential

influencing factors of PTSD symptoms, all variables were included in the multivariate logistic regression model, and then the 'enter method' was used for multivariate analysis. Two-tailed  $p < 0.05$  was considered statistically significant for all analyses. All statistical analyses were conducted using SPSS version 25.0 for Windows (IBM Corporation, Armonk, NY, USA) and R 3.4.3 (R; GitHub, San Francisco, USA).

### Results

From May to June 2018, we surveyed 1054 Wenchuan earthquake survivors and obtained 1026 complete questionnaires. Of the 1026 survivors, 93 were screened positive for PTSD (PCL-C score  $\geq 38$ ). The prevalence of PTSD symptoms was 9.1% (93/1026). Three controls from a pool of the remaining 933 survivors were randomly assigned to each case, matching the community location and age ( $\pm 3$  years). After excluding seven cases without eligible controls, a total of 344 survivors were included in the analysis (86 cases and 258 controls) (Fig. 1).

The age of 344 survivors was 41–86 years old, with an average of 61.6 (s.d. = 10.8). Of these, 40.7% were from Mianzhu, 37.2% were from Wenchuan, 63.4% were female (Table 1). Most of the cases and controls were illiterate or had only primary education (74 cases [86.0%] and 193 controls [74.8%]). The annual household income of 77.9% cases (67/86) and 54.3% controls (140/258) was below 20 000 RMB. Compared with the control group, the case group had more women, lower education level, lower income, lower insurance purchase rate, higher prevalence of 2-week illness and chronic disease, greater property losses during the earthquake, higher possibility of disability or death of immediate families (parents, spouse and children) due to the

**Table 1.** Characteristics of the study population

Characteristics	Overall ( <i>N</i> = 344) No. (%)	Cases ( <i>N</i> = 86) No. (%)	Controls ( <i>N</i> = 258) No. (%)	<i>p</i> value
Age, mean ± s.d.	61.6 ± 10.8	61.7 ± 10.8	61.5 ± 10.8	0.837
Community location				
Shifang	76 (22.1)	19 (22.1)	57 (22.1)	>0.99
Wenchuan	128 (37.2)	32 (37.2)	96 (37.2)	
Mianzhu	140 (40.7)	35 (40.7)	105 (40.7)	
Gender				
Male	126 (36.6)	21 (24.4)	105 (40.7)	0.007
Female	218 (63.4)	65 (75.6)	153 (59.3)	
Ethnicity				
Han	317 (92.2)	78 (90.7)	239 (92.6)	0.563
Minorities	27 (7.8)	8 (9.3)	19 (7.4)	
Education				
Primary school or lower	267 (77.6)	74 (86.0)	193 (74.8)	0.030
Higher than primary school	77 (22.4)	12 (14.0)	65 (25.2)	
Occupation				
Unemployed or peasant	269 (78.2)	73 (84.9)	196 (76.0)	0.083
Others	75 (21.8)	13 (15.1)	62 (24.0)	
Annual household income				
0–20 000 RMB	207 (60.2)	67 (77.9)	140 (54.3)	<0.001
≥20 000 RMB	137 (39.8)	19 (22.1)	118 (45.7)	
Purchasing insurance				
No	16 (4.7)	8 (9.3)	8 (3.1)	0.033
Yes	328 (95.3)	78 (90.7)	250 (96.9)	
Playing mahjong				
No	229 (66.6)	63 (73.3)	166 (64.3)	0.129
Yes	115 (33.4)	23 (26.7)	92 (35.7)	
Drinking alcohol				
No	269 (78.2)	73 (84.9)	196 (76.0)	0.083
Yes	75 (21.8)	13 (15.1)	62 (24.0)	
Two-week illness				
No	165 (48.0)	27 (31.4)	138 (53.5)	<0.001
Yes	179 (52.0)	59 (68.6)	120 (46.5)	
Chronic disease				
No	111 (32.3)	13 (15.1)	98 (38.0)	<0.001
Yes	233 (67.7)	73 (84.9)	160 (62.0)	
House damage in the earthquake				
Not collapsed	66 (19.2)	13 (15.1)	53 (20.5)	0.268
Collapsed	278 (80.8)	73 (84.9)	205 (79.5)	
Property loss in the earthquake				
< 80%	67 (19.5)	10 (11.6)	57 (22.1)	0.034
≥80%	277 (80.5)	76 (88.4)	201 (77.9)	
Buried or injured in the earthquake				
No	304 (88.4)	72 (83.7)	232 (89.9)	0.120

*(Continued)*

Table 1. (Continued.)

Characteristics	Overall (N = 344) No. (%)	Cases (N = 86) No. (%)	Controls (N = 258) No. (%)	p value
Yes	40 (11.6)	14 (16.3)	26 (10.1)	
Witnessing the injury or death in the earthquake				
No	107 (31.1)	23 (26.7)	84 (32.6)	0.313
Yes	237 (68.9)	63 (73.3)	174 (67.4)	
Family injured during the earthquake				
No	220 (64.0)	48 (55.8)	172 (66.7)	0.069
Yes	124 (36.0)	38 (44.2)	86 (33.3)	
Immediate families disabled during the earthquake <sup>a</sup>				
No	336 (97.7)	81 (94.2)	255 (98.8)	0.026
Yes	8 (2.3)	5 (5.8)	3 (1.2)	
Immediate families died during the earthquake <sup>a</sup>				
No	303 (88.1)	65 (75.6)	238 (92.2)	<0.001
Yes	41 (11.9)	21 (24.4)	20 (7.8)	
MSPSS scores, mean $\pm$ s.d.				
Family	21.1 $\pm$ 5.4	19.2 $\pm$ 6.4	21.8 $\pm$ 4.9	0.002
Friends	18.6 $\pm$ 5.8	17.5 $\pm$ 6.6	19.0 $\pm$ 5.5	0.094
Significant other	19.1 $\pm$ 5.8	17.1 $\pm$ 6.9	19.3 $\pm$ 5.3	0.003
Total	58.8 $\pm$ 15.0	53.8 $\pm$ 17.2	60.5 $\pm$ 13.8	0.002

<sup>a</sup>Immediate families refer to parents, spouse and children in this study.

earthquake, lower level of perceived social support from friends and important others.

Univariate conditional logistic regression analyses indicated that the PTSD symptoms were related to gender, education level, income level, insurance, 2-week prevalence, chronic disease, property loss in the earthquake, disability or death of immediate families in the earthquake and perceived social support (Table 2).

The multivariable conditional logistic regression results showed that compared with an annual household income of 20 000 RMB or above, annual household income below 20 000 RMB was associated with a 142% increase in odds of PTSD symptoms (OR 2.42; 95% CI 1.16–5.03) (Table 2). Chronic disease was associated with a 200% increase in odds of PTSD symptoms (OR 3.00; 95% CI 1.31–6.86). The death of parents, spouses or children in the earthquake was associated with a 630% increase in odds of PTSD symptoms (OR 7.30; 95% CI 2.36–22.57), compared with no death. While, in the multivariable analyses, MSPSS total score was not significantly associated with the odds of PTSD symptoms (OR 0.99; 95% CI 0.97–1.01).

## Discussion

This study showed that the prevalence of PTSD symptoms among survivors aged 16 and above in the hard-hit areas 10 years after the Wenchuan earthquake was 9.1%. Low income, chronic diseases and death of close family members in the earthquake were related to PTSD symptoms 10 years after the Wenchuan earthquake. Odds of PTSD symptoms were not statistically increased for survivors losing property or houses, for survivors buried or injured, for survivors witnessing injury or death, for survivors whose families were injured or disabled in the earthquake

and for survivors perceiving lower social support after the earthquake.

The 9.1% prevalence rate of PTSD symptoms 10 years after Wenchuan earthquake was similar to the 8.8% prevalence rate by using the same survey tools in the same sampling areas 3 years after the earthquake (Wen *et al.*, 2012). This again reminds us that a great catastrophe might impact survivors' mental health for quite a long period, even more than 10 years. All stakeholders should pay much attention to the public health issue and take some measures to reduce the risk of developing the disease.

Consistent with the results of this study, a negative correlation between financial constraints and PTSD symptoms was also observed among survivors of the L'Aquila earthquake, Ecuador earthquake, Hurricane Katrina and mudslides in southwestern China (Chen *et al.*, 2007; Gigantesco *et al.*, 2013; Chen *et al.*, 2014; Gerstner *et al.*, 2020). A review on poverty and disasters pointed out that the impact of disasters on victims varies with social class; compared with the rich, the poor are more vulnerable to trauma both physically and mentally (Fothergill and Peek, 2004). The theory of personal vulnerability believes that this is because persons with low socioeconomic status have fewer resources and are less capable of responding to and recovering from disasters (Tang *et al.*, 2017). In turn, PTSD could also cause occupational barriers, resulting in a decrease in the income of survivors (Merz *et al.*, 2019). After the Wenchuan earthquake, some residents in the hard-hit area moved to a new location. At the same time, they lost the farmland they depended on, which increased employment problems for farmers, especially females. Therefore, solving the employment problem and increasing household income might help promote the mental health of survivors in the hard-hit areas.

**Table 2.** Results of conditional logistic regression

Characteristics	Univariate analysis		Multivariate analysis	
	OR (95%CI)	<i>p</i> value	OR (95%CI)	<i>p</i> value
<b>Gender</b>				
Male	Reference	0.008	Reference	0.109
Female	2.10 (1.22–3.64)		1.90 (0.87–4.17)	
<b>Ethnicity</b>				
Han	Reference	0.502	Reference	0.387
Minorities	1.43 (0.50–4.06)		1.88 (0.45–7.88)	
<b>Education</b>				
Primary school or lower	Reference	0.016	Reference	0.082
Higher than primary school	0.37 (0.16–0.83)		0.39 (0.13–1.13)	
<b>Occupation</b>				
Unemployed or peasant	Reference	0.052	Reference	0.405
Others	0.49 (0.23–1.01)		0.66 (0.25–1.74)	
<b>Annual household income</b>				
≥20 000 RMB	Reference	<0.001	Reference	0.018
0–20 000 RMB	3.24 (1.79–5.87)		2.42 (1.16–5.03)	
<b>Purchasing insurance</b>				
No	Reference	0.028	Reference	0.070
Yes	0.33 (0.13–0.89)		0.26 (0.06–1.12)	
<b>Playing mahjong</b>				
No	Reference	0.091	Reference	0.872
Yes	0.59 (0.32–1.09)		1.07 (0.50–2.29)	
<b>Drinking alcohol</b>				
No	Reference	0.084	Reference	0.347
Yes	0.55 (0.28–1.08)		0.65 (0.26–1.61)	
<b>Two-week illness</b>				
No	Reference	<0.001	Reference	0.148
Yes	2.68 (1.57–4.57)		1.70 (0.83–3.47)	
<b>Chronic disease</b>				
No	Reference	<0.001	Reference	0.009
Yes	3.69 (1.90–7.18)		3.00 (1.31–6.88)	
<b>House damage in the earthquake</b>				
Not collapsed	Reference	0.255	Reference	0.523
Collapsed	1.48 (0.75–2.92)		0.71 (0.24–2.05)	
<b>Property loss in the earthquake</b>				
< 80%	Reference	0.025	Reference	0.078
≥80%	2.44 (1.12–5.31)		2.99 (0.89–10.12)	
<b>Buried or injured in the earthquake</b>				
No	Reference	0.121	Reference	0.161
Yes	1.766 (0.861–3.622)		2.02 (0.76–5.43)	
<b>Witnessing the injury or death in the earthquake</b>				
No	Reference	0.291	Reference	0.703

(Continued)

Table 2. (Continued.)

Characteristics	Univariate analysis		Multivariate analysis	
	OR (95%CI)	<i>p</i> value	OR (95%CI)	<i>p</i> value
Yes	1.36 (0.77–2.38)		1.17 (0.53–2.57)	
Family injured during the earthquake				
No	Reference	0.056	Reference	0.995
Yes	1.69 (0.99–2.88)		1.00 (0.49–2.06)	
Immediate families disabled during the earthquake <sup>a</sup>				
No	Reference	0.028	Reference	0.052
Yes	5.00 (1.20–20.92)		6.53 (0.98–43.41)	
Immediate families died during the earthquake <sup>a</sup>				
No	Reference	<0.001	Reference	0.001
Yes	5.32 (2.38–11.91)		7.30 (2.36–22.57)	
MSPSS total score, mean $\pm$ s.d.	0.97 (0.96–0.99)	0.001	0.99 (0.97–1.01)	0.205

<sup>a</sup>Immediate families refer to parents, spouse and children in this study.

The results of this study showed that chronic disease is related to PTSD symptoms. Some previous studies have reached similar conclusions (Gigantesco *et al.*, 2013; Guo *et al.*, 2014; Liao *et al.*, 2019). A study of Fukushima nuclear accident survivors found that, on the one hand, chronic diseases before accidents are one of the predictors of PTSD symptoms; on the other hand, PTSD increases the risks of chronic diseases such as hypertension, hyperlipidaemia, coronary heart disease, etc. (Tsujiuchi *et al.*, 2016). Therefore, while paying attention to the psychological health of survivors after the earthquake, the management of chronic diseases should also be given sufficient attention.

Death or disappearance of family members has been proved to be an important risk factor for symptoms of PTSD (Wang *et al.*, 2011; Zhang *et al.*, 2011; Wen *et al.*, 2012; Chen *et al.*, 2014). The results of this study showed that the death of close relatives in the Wenchuan earthquake increased the probability of PTSD symptoms 10 years after the earthquake by 6.3 times (95% CI 2.36–22.57) (Table 2). It is well known that individuals whose families were killed in the earthquake have a high degree of trauma exposure, and the severity of trauma is recognised as an important risk factor for the persistence of PTSD symptoms (Neria *et al.*, 2008). During the post-disaster reconstruction period, the death of a family member is a constant trauma reminder for individuals, making them easy to recall disaster scenes and causing persistent mental health disorders (Goenjian *et al.*, 2000). Therefore, survivors who lost their parents, spouses or children in the earthquake should be listed as priority intervention targets, no matter in the emergency response period or the recovery period.

For many years, it has been generally believed that social support is a protective factor for PTSD, which helps to buffer traumatic experiences by establishing attachment relationships and enhancing security (Chen *et al.*, 2007). This view was supported by a large amount of evidence (Brewin *et al.*, 2000; Kohler *et al.*, 2018; Lee, 2019). However, not all studies have reached a consistent conclusion. Zhang *et al.* (2011) and Feder *et al.* (2013) concluded that social support is not significantly associated with PTSD symptoms. Most of the above studies were cross-sectional designs, and the inconsistent results might

be attributed to differences in the study population, assessment methods and post-traumatic time. In 1990, Cook and Bickman (1990) proposed that time is an influential factor in the relationship between social support and PTSD symptoms, that is, social support has a stronger protective effect on PTSD shortly after the disaster, but this protective effect will gradually weaken over time. This conclusion was supported by several subsequent longitudinal studies (Adams and Boscarino, 2006; Kaniasty and Norris, 2008; Campbell and Renshaw, 2018). Our previous study indicated that 3 years after the Wenchuan earthquake, perceived social support has a significant negative correlation with PTSD symptoms in hard-hit areas (Cheng *et al.*, 2014). However, this study failed to reveal this association, which might be explained by the following reasons: (1) 10 years after Wenchuan earthquake, the protective effect of perceived social support on the mental health of survivors was weakened; and (2) 10 years after Wenchuan earthquake, PTSD symptoms reduced survivors' ability to perceive social support.

Early researches after the Wenchuan earthquake showed that property loss, house damage, buried or injured, injury or disability of relatives, and witnessing injury or death were all risk factors of PTSD symptoms (Liang *et al.*, 2019). However, unlike the earlier studies, this population-based matched case-control study did not show statistically significant associations between the above-mentioned earthquake exposure factors and PTSD symptoms 10 years after the earthquake. This might be partly due to the healing effect of time and great post-disaster reconstruction. But time cannot heal all wounds (Morina *et al.*, 2014). At present, the burden of mental disorders for survivors in the hard-hit areas of the Wenchuan earthquake is still high.

In view of the serious mental consequences of major natural disasters, long-term mental health monitoring and medical research for disaster survivors are necessary (Havenaar *et al.*, 2016). Furthermore, it is significant to further translate research evidence into policy and practice (Andermann *et al.*, 2016). The results of this study would provide evidence for PTSD screening and the formulation of other policies and measures to improve mental health in Wenchuan earthquake-stricken areas. In rural Sichuan, where mental health resources are scarce, local

governments and primary medical institutions could actively undertake the task of mental health care for earthquake survivors: implementing PTSD screening among high-risk group survivors of low-income, chronic diseases and loss of immediate families in the earthquake, and providing evidence-based treatment or referral to professional institutions for individuals with PTSD. At the same time, based on the research evidence, policies and measures could be proposed in various health-related fields to improve the mental health of survivors, such as increasing the employment rate, promoting a healthy lifestyle and improving the management of chronic diseases. In addition to the above-mentioned significance, this study suggests that other low- and middle-income countries or regions affected by natural disasters could pay long-term attention to the mental health of survivors, especially individuals with low socioeconomic status, chronic diseases and loss of immediate families in disasters, because these factors have a significant correlation with long-term PTSD.

To our knowledge, this study is one of the few focusing on the long-term health consequences of the Wenchuan earthquake. To improve test efficiency, a matched case-control design was adopted. Cases and controls were from representative community samples obtained through multistage random sampling. In addition to the above strengths, several limitations of this study should be mentioned. First, there might be recall bias and reporting bias in collecting information through the questionnaire survey. Second, PCL-C was used to screen PTSD, instead of more professional diagnostic methods, which might cause misclassification. Third, the original PCL-C might not be the best tool to measure stress disorder after a specific traumatic event, so we modified its items to anchor the Wenchuan earthquake in this study. Fourth, the relationship between age, distance from epicentre and PTSD could not be explored because cases and controls were matched by age and location. Nevertheless, the results of this study provide new evidence for the long-term mental health consequences of major natural disasters.

## Conclusions

Ten years after the Wenchuan earthquake, the prevalence of PTSD symptoms among survivors in the hard-hit area was still high. The death of close relatives in the earthquake was an important predictor of long-term PTSD symptoms. Moreover, low income and chronic diseases were significantly associated with PTSD symptoms. Therefore, local governments and primary medical institutions should focus on survivors with the above risk factors, and implement evidence-based intervention measures for PTSD patients as soon as possible. In addition, increasing the family income of survivors and standardizing chronic disease management might be important ways to promote the mental health of survivors.

**Data.** Data are available from the authors on reasonable request.

**Acknowledgements.** The authors wish to thank all the investigators and respondents involved in this study.

**Author contributions.** All listed authors fulfil the ICMJE criteria for authorship.

**Financial support.** This work was supported by the National Natural Science Foundation of China (grant number 71874115) and Special Funds for COVID-19 Prevention and Control of West China Hospital of Sichuan University (HX-2019-nCoV-023).

**Conflict of interest.** None.

**Ethical standards.** The authors assert that all procedures contributing to this work comply with the ethical standards of the relevant national and institutional committees on human experimentation and with the Helsinki Declaration of 1975, as revised in 2000.

## References

- Adams RE and Boscarino JA (2006) Predictors of PTSD and delayed PTSD after disaster: the impact of exposure and psychosocial resources. *The Journal of Nervous and Mental Disease* **194**, 485–493.
- American Psychiatric Association (1994) *Diagnostic and Statistical Manual of Mental Disorders*, 4th Edn., Washington, DC: American Psychiatric Association.
- Andermann A, Pang T, Newton JN, Davis A and Panisset U (2016) Evidence for health. II: Overcoming barriers to using evidence in policy and practice. *Health Research Policy and Systems* **14**, 17.
- Brewin CR, Andrews B and Valentine JD (2000) Meta-analysis of risk factors for posttraumatic stress disorder in trauma-exposed adults. *Journal of Consulting and Clinical Psychology* **68**, 748–766.
- Bryant RA (2019) Post-traumatic stress disorder: a state-of-the-art review of evidence and challenges. *World Psychiatry* **18**, 259–269.
- Campbell SB and Renshaw KD (2018) Posttraumatic stress disorder and relationship functioning: a comprehensive review and organizational framework. *Clinical Psychology Review* **65**, 152–162.
- Chen ACC, Keith VM, Leong KJ, Airriess C, Li W, Chung KY and Lee CC (2007) Hurricane Katrina: prior trauma, poverty and health among Vietnamese-American survivors. *International Nursing Review* **54**, 324–331.
- Chen H, Chen Y, Au M, Feng L, Chen Q, Guo H, Li Y and Yang X (2014) The presence of post-traumatic stress disorder symptoms in earthquake survivors one month after a mudslide in southwest China. *Nursing & Health Sciences* **16**, 39–45.
- Cheng Y, Wang F, Wen J and Shi Y (2014) Risk factors of post-traumatic stress disorder (PTSD) after Wenchuan earthquake: a case control study. *PLoS ONE* **9**, e96644.
- Cheng Z, Ma N, Yang L, Agho K, Stevens G, Raphael B, Cui L, Liu Y, Yan B, Ma H and Yu X (2015) Depression and posttraumatic stress disorder in temporary settlement residents 1 year after the Sichuan earthquake. *Asia-Pacific Journal of Public Health* **27**, Np1962–72.
- Cook JD and Bickman L (1990) Social support and psychological symptomatology following a natural disaster. *Journal of Traumatic Stress* **3**, 541–556.
- Feder A, Ahmad S, Lee EJ, Morgan JE, Singh R, Smith BW, Southwick SM and Charney DS (2013) Coping and PTSD symptoms in Pakistani earthquake survivors: purpose in life, religious coping and social support. *Journal of Affective Disorders* **147**, 156–163.
- Fothergill A and Peek LA (2004) Poverty and disasters in the United States: a review of recent sociological findings. *Natural Hazards* **32**, 89–110.
- Gao L, Qu J and Wang AY (2020) Anxiety, depression and social support in pregnant women with a history of recurrent miscarriage: a cross-sectional study. *Journal of Reproductive and Infant Psychology* **38**, 497–508.
- Gerstner RMF, Lara-Lara F, Vasconez E, Viscor G, Jarrin JD and Ortiz-Prado E (2020) Earthquake-related stressors associated with suicidality, depression, anxiety and post-traumatic stress in adolescents from Muisne after the earthquake 2016 in Ecuador. *BMC Psychiatry* **20**, 347.
- Gigantesco A, Mirante N, Granchelli C, Diodati G, Cofini V, Mancini C, Carbonelli A, Tarolla E, Minardi V, Salmasso S and D'Argenio P (2013) Psychopathological chronic sequelae of the 2009 earthquake in L'Aquila, Italy. *Journal of Affective Disorders* **148**, 265–271.
- Goenjian AK, Steinberg AM, Najarian LM, Fairbanks LA, Tashjian M and Pynoos RS (2000) Prospective study of posttraumatic stress, anxiety, and depressive reactions after earthquake and political violence. *The American Journal of Psychiatry* **157**, 911–916.
- Guo J, Wu P, Tian D, Wang X, Zhang W, Zhang X and Qu Z (2014) Post-traumatic stress disorder among adult survivors of the Wenchuan earthquake in China: a repeated cross-sectional study. *Journal of Anxiety Disorders* **28**, 75–82.



- Guo J, He H, Qu Z, Wang X and Liu C (2017) Post-traumatic stress disorder and depression among adult survivors 8 years after the 2008 Wenchuan earthquake in China. *Journal of Affective Disorders* **210**, 27–34.
- Havenaar JM, Bromet EJ and Gluzman S (2016) The 30-year mental health legacy of the Chernobyl disaster. *World Psychiatry* **15**, 181–182.
- Hayashi F, Ohira T, Nakano H, Nagao M, Okazaki K, Harigane M, Yasumura S, Maeda M, Takahashi A, Yabe H, Suzuki Y and Kamiya K (2021) Association between post-traumatic stress disorder symptoms and bone fractures after the Great East Japan Earthquake in older adults: a prospective cohort study from the Fukushima Health Management Survey. *BMC Geriatrics* **21**, 18.
- He X, Wu J, Wang C and Ye M (2018) Historical earthquakes and their socio-economic consequences in China: 1950–2017. *International Journal of Environmental Research and Public Health* **15**, 2728.
- Kaniasty K and Norris FH (2008) Longitudinal linkages between perceived social support and posttraumatic stress symptoms: sequential roles of social causation and social selection. *Journal of Traumatic Stress* **21**, 274–281.
- Kohler M, Schafer H, Goebel S and Pedersen A (2018) The role of disclosure attitudes in the relationship between posttraumatic stress disorder symptom severity and perceived social support among emergency service workers. *Psychiatry Research* **270**, 602–610.
- Lee JS (2019) Perceived social support functions as a resilience in buffering the impact of trauma exposure on PTSD symptoms via intrusive rumination and entrapment in firefighters. *PLoS ONE* **14**, e0220454.
- Liang YM, Cheng J, Josef IR and Liu ZK (2019) Posttraumatic stress disorder following the 2008 Wenchuan earthquake: a 10-year systematic review among highly exposed populations in China. *Journal of Affective Disorders* **243**, 327–339.
- Liao JP, Ma XF, Gao B, Zhang MF, Zhang YF, Liu MQ and Li XL (2019) Psychological status of nursing survivors in China and its associated factors: 6 years after the 2008 Sichuan earthquake. *Neuropsychiatric Disease and Treatment* **15**, 2301–2311.
- Lin L, Ashkenazi I, Dorn BC and Savoia E (2014) The public health system response to the 2008 Sichuan province earthquake: a literature review and interviews. *Disasters* **38**, 753–773.
- Merz J, Schwarzer G and Gerger H (2019) Comparative efficacy and acceptability of pharmacological, psychotherapeutic, and combination treatments in adults with posttraumatic stress disorder: a network meta-analysis. *JAMA Psychiatry* **76**, 904–913.
- Morina N, Wicherts JM, Lobbrecht J and Priebe S (2014) Remission from post-traumatic stress disorder in adults: a systematic review and meta-analysis of long term outcome studies. *Clinical Psychology Review* **34**, 249–255.
- Neria Y, Nandi A and Galea S (2008) Post-traumatic stress disorder following disasters: a systematic review. *Psychological Medicine* **38**, 467–480.
- Ohrnberger J, Fichera E and Sutton M (2017) The relationship between physical and mental health: a mediation analysis. *Social Science & Medicine* **195**, 42–49.
- Park A and Wang S (2017) Benefiting from disaster? Public and private responses to the Wenchuan earthquake. *World Development* **94**, 38–50.
- Peng Y, Li X, Huang L, Jiang S, Xu Y and Lai Y (2018) Risks of developing concentrated rural settlement after the Wenchuan earthquake in China. *Sustainability (Switzerland)* **10**, 1569.
- Shalev A, Liberzon I and Marmar C (2017) Post-traumatic stress disorder. *The New England Journal of Medicine* **376**, 2459–2469.
- Straus E, Haller M, Lyons RC and Norman SB (2018) Functional and psychiatric correlates of comorbid post-traumatic stress disorder and alcohol use disorder. *Alcohol Research* **39**, 121–129.
- Tang B, Deng Q, Glik D, Dong J and Zhang L (2017) A meta-analysis of risk factors for post-traumatic stress disorder (PTSD) in adults and children after earthquakes. *International Journal of Environmental Research and Public Health* **14**, 1537.
- Tsang WW, Wong GC and Gao KL (2016) Mahjong playing and eye-hand coordination in older adults—a cross-sectional study. *Journal of Physical Therapy Science* **28**, 2955–2960.
- Tsujiuchi T, Yamaguchi M, Masuda K, Tsuchida M, Inomata T, Kumano H, Kikuchi Y, Augusterfer EF and Mollica RF (2016) High prevalence of post-traumatic stress symptoms in relation to social factors in affected population one year after the Fukushima nuclear disaster. *PLoS ONE* **11**, e0151807.
- Uniyal A, Singh R, Akhtar A, Dhaliwal J, Kuhad A and Sah SP (2020) Pharmacological rewriting of fear memories: a beacon for post-traumatic stress disorder. *European Journal of Pharmacology* **870**, 172824.
- Wang B, Ni C, Chen J, Liu X, Wang A, Shao Z, Xiao D, Cheng H, Jiang J and Yan Y (2011) Posttraumatic stress disorder 1 month after 2008 earthquake in China: Wenchuan earthquake survey. *Psychiatry Research* **187**, 392–396.
- Watson P (2019) PTSD as a public mental health priority. *Current Psychiatry Reports* **21**, 61.
- Weathers FW, Litz BT, Herman DS, Huska JA and Keane TM (1993) The PTSD checklist (Pcl): reliability, validity, and diagnostic utility. *Annual Convention of the International Society for Traumatic Stress Studies, San Antonio, TX*.
- Wen J, Shi YK, Li YP, Yuan P and Wang F (2012) Quality of life, physical diseases, and psychological impairment among survivors 3 years after Wenchuan earthquake: a population based survey. *PLoS ONE* **7**, e43081.
- Zhang Z, Shi Z, Wang L and Liu M (2011) One year later: mental health problems among survivors in hard-hit areas of the Wenchuan earthquake. *Public Health* **125**, 293–300.
- Zhang L, Liu X, Li Y, Liu Y, Liu Z, Lin J, Shen J, Tang X, Zhang Y and Liang W (2012) Emergency medical rescue efforts after a major earthquake: lessons from the 2008 Wenchuan earthquake. *Lancet (London, England)* **379**, 853–861.
- Zhou X, Song H, Hu M, Li X, Cai Y, Huang G, Li J, Kang L and Li J (2015) Risk factors of severity of post-traumatic stress disorder among survivors with physical disabilities one year after the Wenchuan earthquake. *Psychiatry Research* **228**, 468–474.
- Zimet GD, Dahlem NW, Zimet SG and Farley GK (1988) The multidimensional scale of perceived social support. *Journal of Personality Assessment* **52**, 30–41.