

Discrepant Prevalence and Incidence of *Leishmania* Infection between Two Neighboring Villages in Central Mali Based on Leishmanin Skin Test Surveys

Fabiano Oliveira^{1,9}, Seydou Doumbia^{2,9}, Jennifer M. Anderson¹, Ousmane Faye³, Souleymane S. Diarra², Pierre Traoré³, Moumine Cisse³, Guimba Camara³, Koureissi Tall³, Cheick A. Coulibaly², Sibiry Samake², Ibrahim Sissoko², Bourama Traoré², Daouda Diallo², Somita Keita³, Rick M. Fairhurst¹, Jesus G. Valenzuela¹, Shaden Kamhawi^{1*}

1 Laboratory of Malaria and Vector Research, National Institute of Allergy and Infectious Diseases, National Institutes of Health, Rockville, Maryland, United States of America, **2** Faculty of Medicine, Pharmacy and Odontostomatology, University of Bamako, Bamako, Mali, **3** Centre National d'Appui à la Lutte contre la Maladie, Bamako, Mali

Abstract

Apart from a single report, the last publication of cutaneous leishmaniasis (CL) in Mali dates back more than 20 years. The absence of information on the current status of CL in Mali led us to conduct a cohort study in Kemena and Sougoula, two villages in Central Mali from which cases of CL have been recently diagnosed by Mali's reference dermatology center in Bamako. In May 2006, we determined the baseline prevalence of *Leishmania* infection in the two villages using the leishmanin skin test (LST). LST-negative individuals were then re-tested over two consecutive years to estimate the annual incidence of *Leishmania* infection. The prevalence of *Leishmania* infection was significantly higher in Kemena than in Sougoula (45.4% vs. 19.9%; OR: 3.36, CI: 2.66–4.18). The annual incidence of *Leishmania* infection was also significantly higher in Kemena (18.5% and 17% for 2007 and 2008, respectively) than in Sougoula (5.7% for both years). These data demonstrate that the risk of *Leishmania* infection was stable in both villages and confirm the initial observation of a significantly higher risk of infection in Kemena (OR: 3.78; CI: 2.45–6.18 in 2007; and OR: 3.36; CI: 1.95–5.8 in 2008; $P < 0.005$). The absence of spatial clustering of LST-positive individuals in both villages indicated that transmission may be occurring anywhere within the villages. Although Kemena and Sougoula are only 5 km apart and share epidemiologic characteristics such as stable transmission and random distribution of LST-positive individuals, they differ markedly in the prevalence and annual incidence of *Leishmania* infection. Here we establish ongoing transmission of *Leishmania* in Kemena and Sougoula, Central Mali, and are currently investigating the underlying factors that may be responsible for the discrepant infection rates we observed between them.

Trial Registration: ClinicalTrials.gov NCT00344084

Citation: Oliveira F, Doumbia S, Anderson JM, Faye O, Diarra SS, et al. (2009) Discrepant Prevalence and Incidence of *Leishmania* Infection between Two Neighboring Villages in Central Mali Based on Leishmanin Skin Test Surveys. *PLoS Negl Trop Dis* 3(12): e565. doi:10.1371/journal.pntd.0000565

Editor: Hechmi Louzir, Institut Pasteur de Tunis, Tunisia

Received: July 22, 2009; **Accepted:** November 3, 2009; **Published:** December 15, 2009

This is an open-access article distributed under the terms of the Creative Commons Public Domain declaration which stipulates that, once placed in the public domain, this work may be freely reproduced, distributed, transmitted, modified, built upon, or otherwise used by anyone for any lawful purpose.

Funding: This work was supported by the Intramural Research Program of the Division of Intramural Research, National Institute of Allergy and Infectious Diseases, National Institutes of Health. The funders had no role in study design, data collection and analysis, decision to publish, or preparation of the manuscript.

Competing Interests: The authors have declared that no competing interests exist.

* E-mail: skamhawi@niaid.nih.gov

9 These authors contributed equally to this work.

Introduction

Leishmaniasis is endemic in 88 countries with an estimated global burden of approximately two million disability-adjusted life years [1]. No vaccine is currently available for leishmaniasis, and chemotherapy—if accessible—is costly and has considerable side effects [2,3]. Leishmaniasis is a vector-borne disease transmitted to the host via the bite of a *Leishmania*-infected phlebotomine sand fly. Depending on the *Leishmania* species, humans can develop visceral or cutaneous forms of the disease. In the Old World, cutaneous leishmaniasis (CL) is a self-healing disease characterized by skin lesions that can develop into unsightly scars, typically on the face and extremities. CL was first reported from Mali, West Africa, in 1958 [4]. Since then there have been sporadic reports of CL in Mali [5–13], with the majority of cases originating from 5 of 42 districts (Kayes, Bafoulabe, Segou, Gao, and Nara) [6]. *Leishmania*

major was first identified as the causative agent of CL in Mali following its isolation from two skin lesions, one from a tourist and the other from a permanent resident of Mali [10,11]. Both individuals were likely infected in the Mopti region of Central Mali. The parasite isolates were characterized by isoenzyme analysis as *L. major* MON-26 and MON-25 [10,11]. Recently, two additional zymodemes of *L. major*, MON-74 and MON-117, were reported from Mali [13]. Keita et al. [12] reported on CL cases referred to the Centre National d'Appui à la Lutte contre la Maladie (CNAM), the only dermatological reference center in Mali, from 1997 to 2001, showing that CL remains widely distributed in the country. Thirty of the 251 CL cases (12%) reported in this study originated from the Segou district of Mali [12]. The present study demonstrates the active transmission of *Leishmania* infection in two neighboring villages (Kemena and Sougoula) in the Segou district of Central Mali.

Author Summary

Leishmaniasis is a vector-borne disease transmitted to humans by the bite of an infected sand fly. Leishmaniasis is present in more than 88 countries and affects more than 12 million people. Depending on the species of *Leishmania*, the host can develop cutaneous leishmaniasis (CL), which is characterized by skin ulcers in uncovered parts of the body or a more severe form, visceral leishmaniasis, which affects the liver and spleen and is fatal if not treated. This study aims to establish the past and present infection with *Leishmania* parasites in two villages where recent cases have been diagnosed by the dermatology center (CNAM) in Bamako. This was achieved using a *Leishmania*-specific skin test that was administered annually to permanent residents of Kemena and Sougoula villages from 2006 to 2008. The results show that transmission of *Leishmania* is active and stable in these two villages. Moreover, despite sharing similar cultural and environmental features, the individuals from Kemena presented three times the risk of *Leishmania* infection compared with those from Sougoula. Our findings raise awareness of the continued presence of CL in Mali.

Methods

Ethics statement

The study protocol (NCT00344084, available at <http://www.clinicaltrials.gov/>) was approved by the Institutional Review Boards of the National Institute of Allergy and Infectious Diseases (USA) and the University of Bamako (Mali). The study was externally monitored for protocol agreement, data integrity, and protection of human subjects.

Study area

The study was carried out in two villages, Kemena (13°7'30.50"N, 6°54'46.30"W) and Sougoula (13°5'24.97"N, 6°53'11.86"W), located 180 km northeast of Bamako, the capital of Mali (Figure 1). The villages are 5 km apart and share the same topography and climate. The villages are situated on a flat plain, and the natural vegetation is characterized by savannah grasses and shrubs. The climate is subtropical to arid and is hot and dry from February to June (27–34°C), mild, rainy, and humid from June to November (27–29°F), and cool and dry from November to February (25–28°C). The population consists mainly of farmers, and the basic food crops are millet, sorghum, peanuts, and peas. Cattle, goats, and sheep are maintained inside the villages. Both

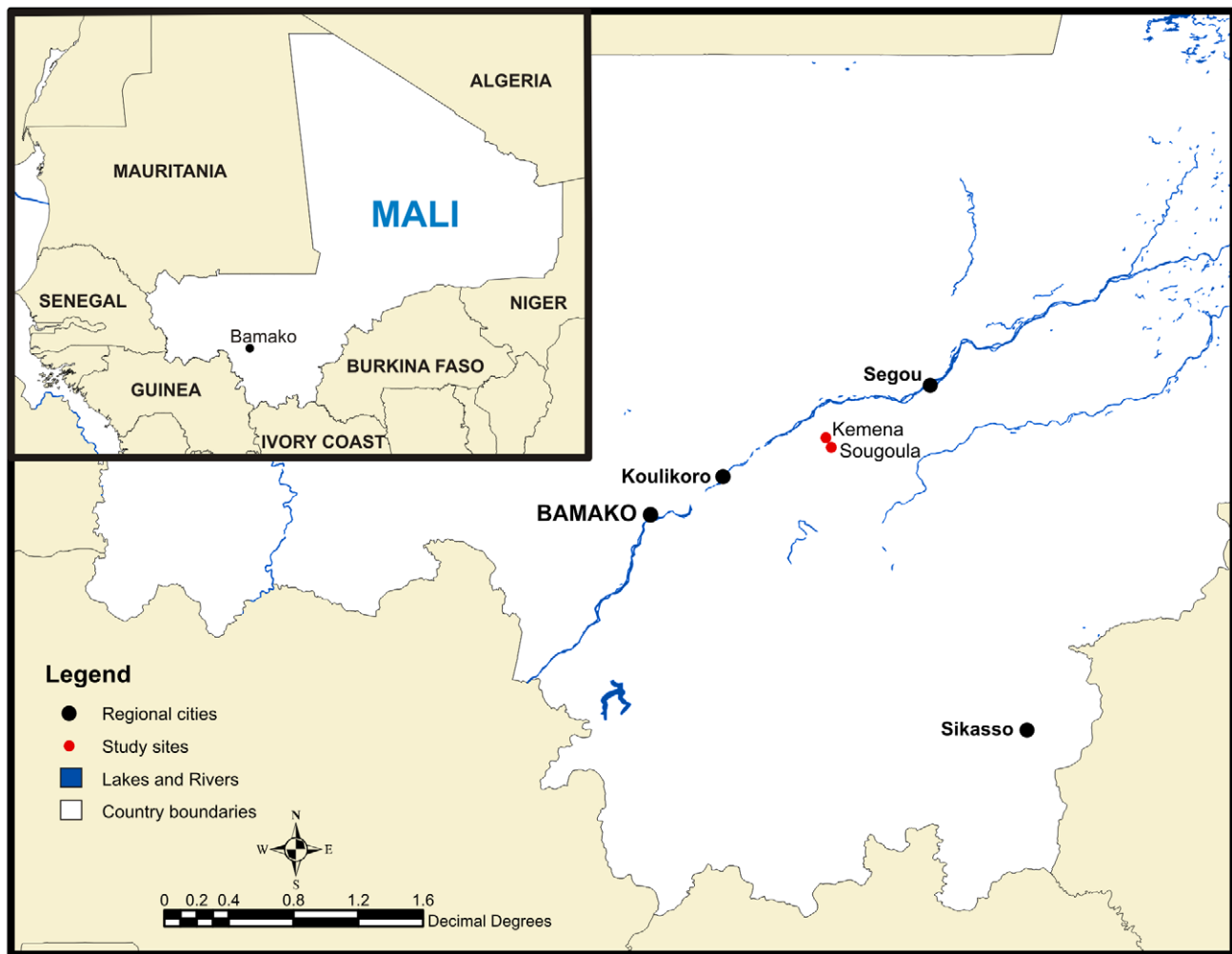


Figure 1. Map of Kemena and Sougoula, Region of Segou, Mali. The villages of Kemena and Sougoula are situated between the cities of Bamako and Segou. The insert illustrates the location of Mali in relation to other countries in West Africa. doi:10.1371/journal.pntd.0000565.g001

villages have similar multi-ethnic societies, represented by a Bambara majority and Peulh and Sarakole minorities.

Enrollment of study subjects

Prior to the study, a census was conducted of all permanent residents in the two villages. The position of every house within each village was mapped using GPS and the houses were numbered sequentially. Local guides invited families from adjacent houses to the local school house located at the perimeter of each village to insure full coverage of the population. Families were welcomed at the school and provided with a protocol identification card comprising their name, location and a color picture. Thereafter, they received an explanation of the aims of the study and those agreeing to participate were asked to sign a consent form. Parents or guardians were asked to sign on behalf of participating children. All children younger than one year old were excluded from the study.

Leishmanin skin test (LST)

The LST (leishmanin, LOT 124; Institute Pasteur, Tehran) was performed at the beginning of the study and at approximately 1 and 2 years later. Briefly, 0.1 ml of leishmanin was injected intradermally in the left forearm. Readings were taken 48 to 72 hours after the injection using a ball point pen to determine the size of the induration. Measurements with a diameter greater than 5 mm were considered positive [14]. Only individuals who were negative during the preceding LST survey were re-tested the following year.

Statistical analysis

Results were analyzed using the Statistical Package for the Social Sciences (SPSS, Chicago, IL, USA). Fisher's exact test was used to assess the association between infection and demographic variables. Age means between villages were compared using an independent samples *t*-test. One-way ANOVA with Bonferroni's multiple comparison test was applied to evaluate the difference in the mean size of the LST reaction between the two study sites. Values below $P < 0.05$ were considered statistically significant.

To assess geographic clustering of cases, coordinates of households were determined using a GPS receiver (Trimble, Sunnyvale, CA, USA). The coordinates were superimposed onto satellite images acquired from DigitalGlobe Incorporated (images were taken May 2006 by the QuickBird satellite). Spatial-scan statistical software (SaTScan™ v8.0 software) was used to map the location of the LST-positive individuals. The performed scans were purely spatial and accordingly were tested under the Poisson model [15]. The spatial software calculates a *P* value and log likelihood ratio to determine the statistical significance of any detected clusters.

Results

Study population

We enrolled a total of 1530 individuals, 663 from Kemena and 867 from Sougoula. The mean age of all study participants was 20 years ($SD \pm 19$) and included 1- to 92-year-old individuals (Table 1). Seventy-five percent of the population was < 30 years old and, nearly 53% were female. No differences in the age mean or sex distribution were found between the two villages (Table 1).

Prevalence of *Leishmania* infection in Kemena and Sougoula

In May 2006, we determined the prevalence of *Leishmania* infection by conducting a baseline LST survey of Kemena and Sougoula residents. The proportions of LST-positive (LST⁺)

Table 1. Sex and age of individuals in the villages of Kemena and Sougoula at the time of enrollment.

| | Kemena | Sougoula | Total | P value |
|------------------------|-----------------|-----------------|-----------------|---------|
| Females (%) | 348/663 (52.9) | 461/867 (53.1) | 809/1530 (52.9) | 0.983 |
| Mean age in years (SD) | 21 (± 19) | 20 (± 19) | 20 (± 19) | 0.528 |

doi:10.1371/journal.pntd.0000565.t001

individuals differed by more than twofold between the villages: 45.4% in Kemena and 19.9% in Sougoula (Table 2). There was an age-associated increase in the frequency of LST⁺ individuals in both villages, although it was more pronounced in Kemena (Figure 2). Analysis of these data suggested that residents of Kemena have a more than threefold increased risk of *Leishmania* infection compared with residents of Sougoula (OR: 3.36; CI: 2.66–4.18; $P < 0.0005$). Furthermore, the population of Kemena presented a significantly higher prevalence of infection ($P < 0.05$) among all age groups except children less than 3 years old (Figure 2). Importantly, there was no statistical significance in the mean size of the LST reaction in inhabitants of Kemena compared to Sougoula (Figure 3).

Incidence of *Leishmania* infection in Kemena and Sougoula

To estimate the annual incidence of *Leishmania* infection in the two study villages, we re-tested the LST-negative (LST⁻) individuals 1 and 2 years later. The annual incidence of *Leishmania* infection in both villages combined was 9.9% (85/853) in 2007 and 8.9% (59/659) in 2008 (Table 2). In both years, we observed a higher incidence of *Leishmania* infection in Kemena than in Sougoula (18.5% vs. 5.7% in 2007 and 17.0% vs. 5.7% in 2008; $P < 0.001$) (Table 2). Analysis of these data indicated that the risk of *Leishmania* infection was significantly higher in Kemena than in Sougoula during 2007 (OR: 3.78; CI: 2.45–6.18; $P < 0.005$) and 2008 (OR: 3.36; CI: 1.95–5.80; $P < 0.005$). The consistent incidence rates provide evidence that the rate of *Leishmania* transmission was stable in both villages over the 2-year study period. As was observed for prevalence, the mean size of the LST reaction was not significantly different when comparing the populations of Kemena and Sougoula for both incidence surveys (Figure 3).

Spatial distribution of infected individuals

Kemena and Sougoula households each occupy an area of roughly 0.4 km² and radiate from a central mosque in a circular pattern. Figure 4 shows a map of the number of LST⁺ individuals

Table 2. Prevalence and annual incidence of *Leishmania* infection, determined using the leishmanin skin test (LST), in individuals living in the villages of Kemena and Sougoula.

| Survey | Date | Number LST positive (%) | | Odds ratio | P value |
|--------------|----------|-------------------------|----------------|------------------|-----------|
| | | Kemena | Sougoula | | |
| Prevalence | May 2006 | 301/663 (45.4) | 173/867 (19.9) | 3.36 (2.66–4.18) | < 0.005 |
| Incidence I | May 2007 | 53/287 (18.5) | 32/566 (5.7) | 3.78 (2.45–6.18) | < 0.005 |
| Incidence II | May 2008 | 32/189 (17.0) | 27/470 (5.7) | 3.36 (1.95–5.80) | < 0.005 |

doi:10.1371/journal.pntd.0000565.t002

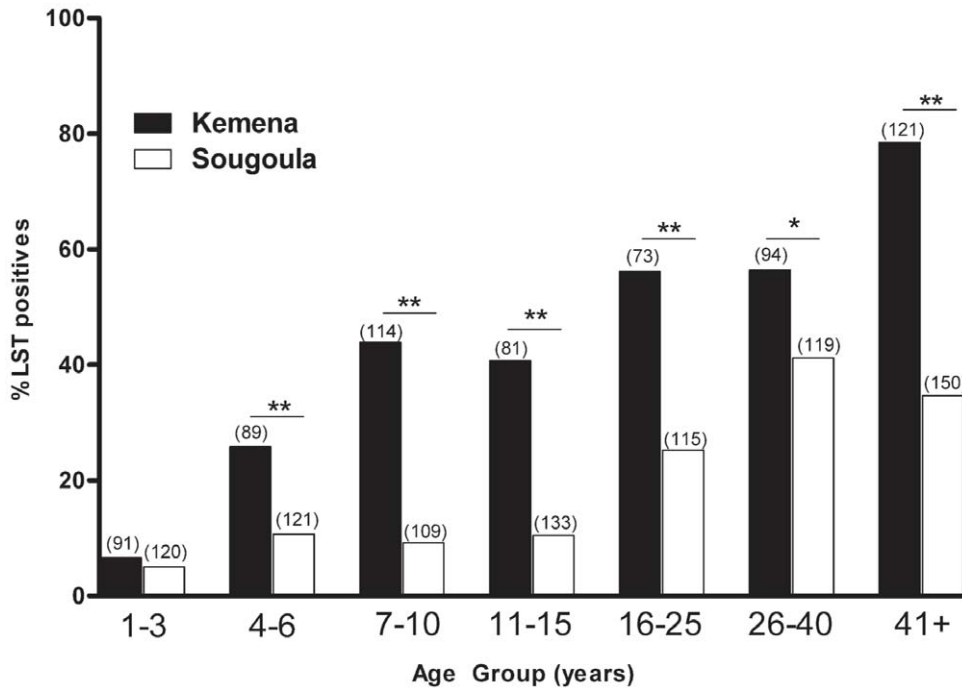


Figure 2. Prevalence of *Leishmania* infection by age group. Frequency of LST-positive individuals from Kemena (black bars) and Sougoula (white bars) by age group. The numbers in parenthesis represent the total number of individuals in each age group. Asterisks indicate statistical significance (* $P < 0.005$ or ** $P < 0.001$). doi:10.1371/journal.pntd.0000565.g002

by household for Kemena (Figure 4A) and Sougoula (Figure 4B) for the combined incidence data of 2007 and 2008. Yellow circles represent population by household, and red circles represent LST⁺ individuals. Spatial analysis determined that there is no geographical clustering of LST⁺ individuals within either village.

Discussion

Apart from a single publication [12], there has been no further report of CL in Mali the past 20 years. In this study, we used the LST to determine infection by *Leishmania* parasites [16–19]. A positive LST reaction relies on an in vivo cellular immune

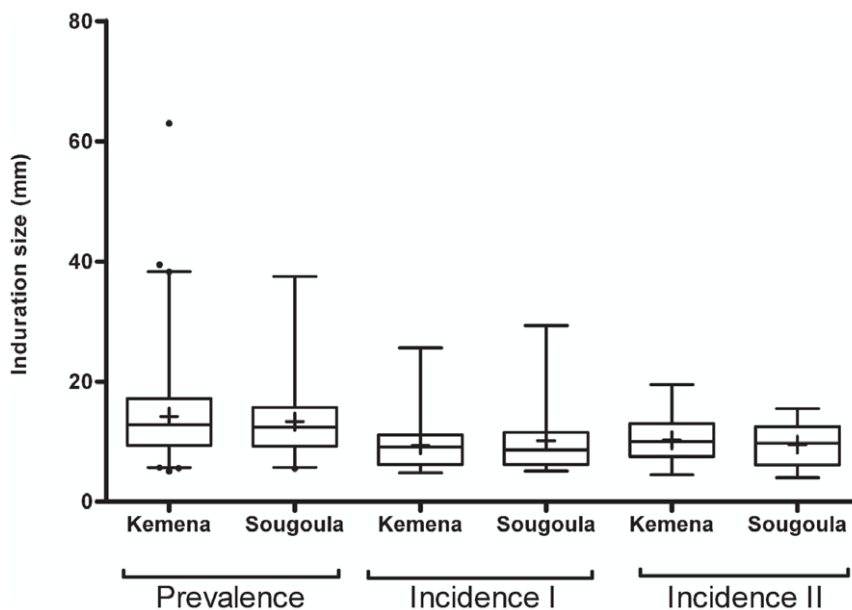


Figure 3. LST reaction size in Kemena and Sougoula. Induration size of LST reactions for study subjects in Kemena and Sougoula during prevalence and incidence surveys. All measurements over zero were included in the “box and whiskers” plot. The box represents the 25th and 75th percentiles. The median is represented by a solid horizontal line and the mean by a (+). The whiskers of the graph show the 1st percentile to the 99th percentile. Values lower than the first percentile and greater than the 99th percentile are represented by a (•). doi:10.1371/journal.pntd.0000565.g003

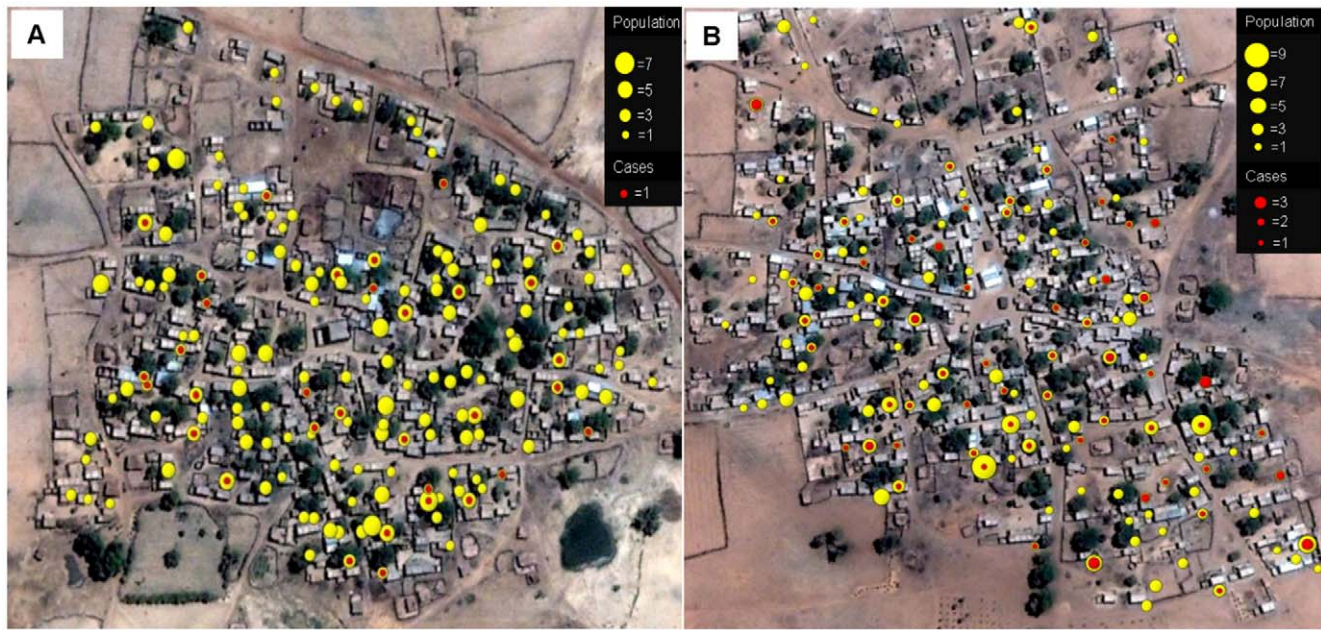


Figure 4. Spatial distribution of LST-positive individuals. Combined distribution of LST-positive individuals (red circles) during 2007 and 2008 relative to number of inhabitants per household (yellow circles) in the village of Kemena (A) and Sougoula (B). Diameters of yellow and red circles are proportional to the number of individuals in each location.
doi:10.1371/journal.pntd.0000565.g004

response specific to parasite molecules and is a measure of exposure to *Leishmania* parasites irrespective of disease presentation. Based on two annual incidence rates, our data suggest that transmission of *Leishmania* is active in the villages of Kemena and Sougoula. The high prevalence of LST⁺ individuals in these two villages was similar to prevalence data reported previously from other parts of the country [6]. This may be a reflection of the stable endemicity of *Leishmania* transmission in Mali over time. In our study villages, we have shown an increase in the number of LST⁺ individuals with age, suggesting that this is not a recent focus. The presence of LST⁻ individuals in the older age group (>41 years) may indicate a moderate force of infection. Our data show that most transmission is occurring after the age of 3 years with males and females equally affected, suggesting that transmission is not related to occupational or other gender-associated tasks.

The statistically significant difference in prevalence of infection between the two villages was unexpected, because they are located only 5 km apart and share similar geographical and human behavioral features. Sougoula was founded more than 300 years ago during the Bambara Empire [20,21] and Kemena was established a couple of decades later. Both villages retain urbanization patterns from ancient times, and there have been no substantial differences between the two villages that could account for the increased risk of *Leishmania* infection observed in Kemena compared with Sougoula. The higher risk of infection in Kemena was maintained in two subsequent surveys, with very similar incidence rates over time. These differences may be due to a higher concentration of rodent reservoirs and, in turn, a higher infection rate of vector sand flies in Kemena. Indeed, the uniform distribution of LST⁺ individuals throughout the villages (Figure 4) may reflect peridomestic transmission, with reservoir and vector populations present either in or around houses. We have previously established the presence of *P. duboscqi*, an incriminated vector of CL in sub-Saharan Africa [23–26], in Kemena [27]. Additionally, examination of households in the villages revealed the presence of active rodent burrows. This may be of consequence, as rodents are the

established reservoirs of CL due to *L. major* [22]. Incrimination of rodents in the village as reservoirs and finding infected sand flies inside the villages will support the hypothesis that transmission is peridomestic. Moreover, comparison of the density and infection rates of reservoir and vector populations may help elucidate the cause of the observed discrepancy in the incidence of *Leishmania* infection in the two villages. It is important to note that the mean size of the LST reaction was similar for the two villages in all the conducted surveys (Figure 3). This suggests that the observed difference in LST positivity was not the result of the non-responsiveness of either population to leishmanin.

In conclusion, the results of this study highlight the fact that there is active transmission of *Leishmania* in Kemena and Sougoula, located in Central Mali. Our findings show a significant discrepancy in CL prevalence and incidence. Studies are under way to elucidate the cause of these differences.

Supporting Information

Checklist S1 STROBE checklist.

Found at: doi:10.1371/journal.pntd.0000565.s001 (0.06 MB DOC)

Acknowledgments

We sincerely thank the residents of Sougoula and Kemena, Mali, for participating in this study. We also acknowledge the assistance provided during field studies by members of the Vector Molecular Biology Unit at Laboratory of Malaria and Vector Research, NIAID, NIH. We also thank Drs. Robert Gwadz and Richard Sakai for continuous support throughout our work in Mali and NIAID intramural editor Brenda Rae Marshall for assistance.

Author Contributions

Conceived and designed the experiments: FO SD JMA OF PT SK RMF JGV SK. Performed the experiments: FO SD JMA OF SSD PT MC GC KT CAC SS IS BT DD SK RMF JGV SK. Analyzed the data: FO SD JMA RMF JGV SK. Wrote the paper: FO SD JMA RMF JGV SK.

References

- Hotez PJ, Remme JH, Buss P, Alleyne G, Morel C, et al. (2004) Combating tropical infectious diseases: report of the Disease Control Priorities in Developing Countries Project. *Clin Infect Dis* 38: 871–878.
- Sundar S (2001) Treatment of visceral leishmaniasis. *Med Microbiol Immunol* 190: 89–92.
- Croft SL, Coombs GH (2003) Leishmaniasis—current chemotherapy and recent advances in the search for novel drugs. *Trends Parasitol* 19: 502–508.
- Lariviere M, Abonnenc E, Kramer R (1961) [Chronicle of cutaneous leishmaniasis in West Africa. The problem of the vector.]. *Bulletin de la Societe de pathologie exotique et de ses filiales* 54: 1031–1046.
- Imperato PJ, Bradrick M (1969) Leishmanin skin sensitivity in Timbuctoo. *J Trop Med Hyg* 72: 216–218.
- Imperato PJ, Diakite S (1969) Leishmaniasis in the Republic of Mali. *Transactions of the Royal Society of Tropical Medicine and Hygiene* 63: 236–241.
- Imperato PJ, Coulibaly B, Togola T (1970) Leishmanin skin sensitivity in northwestern Mali. *Acta Trop* 27: 260–265.
- Imperato PJ, Sow O, Fofana B (1973) Positive leishmanin skin sensitivity in the absence of clinical leishmaniasis. *J Trop Med Hyg* 76: 132–134.
- Imperato PJ, Fofana B, Sow O, Diallo S (1974) Leishmanin skin sensitivity in the inland delta of the Niger. *Trop Geogr Med* 26: 303–306.
- Garin JP, Peyramond D, Piens MA, Rioux JA, Godfrey DG, et al. (1985) [Presence of *Leishmania major* Yakimoff and Schokhor, 1914 in Mali. Enzymatic identification of a strain of human origin]. *Ann Parasitol Hum Comp* 60: 93–94.
- Izri MA, Doumbo O, Belazzoug S, Pralong F (1989) [Presence of *Leishmania major* MON-26 in Mali]. *Ann Parasitol Hum Comp* 64: 510–511.
- Keita S FO, Ndiaye Ht, Konare Hd (2003) Epidemiologie et polymorphisme clinique de la leishmaniose cutanee observee au CNAM (ex-Institut Marchoux) Bamako (Mali). *Mali Médical XVIII*: 3.
- Pralong F, Dereure J, Ravel C, Lami P, Balard Y, et al. (2009) Geographical distribution and epidemiological features of Old World cutaneous leishmaniasis foci, based on the isoenzyme analysis of 1048 strains. *Trop Med Int Health* 14: 1071–1085.
- Sokal JE (1975) Editorial: Measurement of delayed skin-test responses. *N Engl J Med* 293: 501–502.
- Kulldorff M (1997) A spatial scan statistic. *Communications in Statistics: Theory and Methods* 26: 1481–1496.
- Alvarado R, Enk C, Jaber K, Schnur L, Frankenburg S (1989) Delayed-type hypersensitivity and lymphocyte proliferation in response to *Leishmania major* infection in a group of children in Jericho. *Trans R Soc Trop Med Hyg* 83: 189–192.
- Weigle KA, Valderrama L, Arias AL, Santrich C, Saravia NG (1991) Leishmanin skin test standardization and evaluation of safety, dose, storage, longevity of reaction and sensitization. *Am J Trop Med Hyg* 44: 260–271.
- Weigle KA, Santrich C, Martinez F, Valderrama L, Saravia NG (1993) Epidemiology of cutaneous leishmaniasis in Colombia: a longitudinal study of the natural history, prevalence, and incidence of infection and clinical manifestations. *J Infect Dis* 168: 699–708.
- Sassi A, Louzir H, Ben Salah A, Mokni M, Ben Osman A, et al. (1999) Leishmanin skin test lymphoproliferative responses and cytokine production after symptomatic or asymptomatic *Leishmania major* infection in Tunisia. *Clin Exp Immunol* 116: 127–132.
- Davidson B (1995) *Africa in History*. New York: Simon & Schuster.
- Djata SAK (1997) *The Bamana Empire by the Niger: Kingdom, Jihad and Colonization 1712–1920*. Princeton NJ: Markus Wiener Publishers.
- Ashford RW (1996) Leishmaniasis reservoirs and their significance in control. *Clin Dermatol* 14: 523–532.
- Beach R, Kiilu G, Hendricks L, Oster C, Lecuwenburg J (1984) Cutaneous leishmaniasis in Kenya: transmission of *Leishmania major* to man by the bite of a naturally infected *Phlebotomus duboscqi*. *Trans R Soc Trop Med Hyg* 78: 747–751.
- Gebre-Michael T, Pralong F, Lane RP (1993) *Phlebotomus* (*Phlebotomus*) *duboscqi* (Diptera: Phlebotominae), naturally infected with *Leishmania major* in southern Ethiopia. *Trans R Soc Trop Med Hyg* 87: 10–11.
- Lawyer PG, Ngumbi PM, Anjili CO, Odongo SO, Mebrahtu YB, et al. (1990) Development of *Leishmania major* in *Phlebotomus duboscqi* and *Sergentomyia schwetzi* (Diptera: Psychodidae). *Am J Trop Med Hyg* 43: 31–43.
- Mukhopadhyay J, Ghosh K (1999) Vector potential of *Phlebotomus duboscqi* and *P. papatasi*: a comparison of feeding behaviour, reproductive capacity and experimental infection with *Leishmania major*. *Ann Trop Med Parasitol* 93: 309–318.
- Kato H, Anderson JM, Kamhawi S, Oliveira F, Lawyer PG, et al. (2006) High degree of conspecificity among secreted salivary gland proteins from two geographically distant *Phlebotomus duboscqi* sandflies populations (Mali and Kenya). *BMC Genomics* 7: 226.