




RESEARCH ARTICLE

Improved detection and management of advanced HIV disease through a community adult TB-contact tracing intervention with same-day provision of the WHO-recommended package of care including ART initiation in a rural district of Mozambique

Santiago Izco^{1,2,§} , Adrià Murias-Closas¹ , Alexander M Jordan³, Gregory Greene³, Nteruma Catorze², Helio Chiconela⁴, Juan Ignacio Garcia^{1,2,5}, Alejandro Blanco-Arevalo⁶, Anna Febrer¹, Aina Casellas¹, Belén Saavedra^{1,2}, Tom Chiller³, Tacilta Nhamossa² , Alberto Garcia-Basteiro^{1,2} and Emilio Letang^{1,7} 

[§]Corresponding author: Santiago Izco, E22A, Viviendas Sociales-Sonagas, Malabo, Equatorial Guinea. Tel: +240 222433054. (santiagoizco.tb.ge@gmail.com)

Abstract

Introduction: AIDS-mortality remains unacceptably high in sub-Saharan Africa, largely driven by advanced HIV disease (AHD). We nested a study in an existing tuberculosis (TB) contact-tracing intervention (Xpatial-TB). The aim was to assess the burden of AHD among high-risk people living with HIV (PLHIV) identified and to evaluate the provision of the WHO-recommended package of care to this population.

Methods: All PLHIV ≥ 14 years old identified between June and December 2018 in Manhiça District by Xpatial-TB were offered to participate in the study if ART naïve or had suboptimal ART adherence. Consenting individuals were screened for AHD. Patients with AHD (CD4 < 200 cells/ μ L or WHO stage 3 or 4) were offered a package of interventions in a single visit, including testing for cryptococcal antigen (CrAg) and TB-lipoarabinomannan (TB-LAM), prophylaxis and treatment for opportunistic infections, adherence support or accelerated ART initiation. We collected information on follow-up visits carried out under routine programmatic conditions for six months.

Results: A total of 2881 adults were identified in the Xpatial TB-contact intervention. Overall, 23% (673/2881) were HIV positive, including 351 TB index (64.2%) and 322 TB contacts (13.8%). Overall, 159/673 PLHIV (24%) were ART naïve or had suboptimal ART adherence, of whom 155 (97%, 124 TB index and 31 TB-contacts) consented to the study and were screened for AHD. Seventy percent of TB index-patients (87/124) and 16% of TB contacts (5/31) had CD4 < 200 cells/ μ L. Four (13%) of the TB contacts had TB, giving an overall AHD prevalence among TB contacts of 29% (9/31). Serum-CrAg was positive in 4.6% (4/87) of TB-index patients and in zero TB contacts. All ART naïve TB contacts without TB initiated ART within 48 hours of HIV diagnosis. Among TB cases, ART timing was tailored to the presence of TB and cryptococcosis. Six-month mortality was 21% among TB-index cases and zero in TB contacts.

Conclusions: A TB contact-tracing outreach intervention identified undiagnosed HIV and AHD in TB patients and their contacts, undiagnosed cryptococcosis among TB patients, and resulted in an adequate provision of the WHO-recommended package of care in this rural Mozambican population. Same-day and accelerated ART initiation was feasible and safe in this population including among those with AHD.

Keywords: AHD; TB contact-tracing; CrAg; TB-LAM; ART initiation; sub-Saharan Africa

Received 15 December 2020; Accepted 5 July 2021

Copyright © 2021 The Authors. *Journal of the International AIDS Society* published by John Wiley & Sons Ltd on behalf of International AIDS Society

This is an open access article under the terms of the Creative Commons Attribution License, which permits use, distribution and reproduction in any medium, provided the original work is properly cited.

1 | INTRODUCTION

Despite the reduction in HIV incidence and AIDS-mortality resulting from expanded access to antiretroviral treatment (ART) globally, more than one-third of people living with HIV (PLHIV) continue to present to care with advanced HIV disease (AHD) in many low and middle income countries [1-3]. AHD is defined as having <200 CD4 cells/ μ L or World Health Organization (WHO) clinical stage 3 or 4 criteria [4]. People presenting with AHD are at high risk of opportunistic

infections (OI), hospitalizations and mortality with tuberculosis (TB) and cryptococcosis accounting for the majority of these AIDS-related deaths [5-12].

In 2015, the WHO called for differentiated care service-delivery for various HIV populations [6,13-15]. Two years later specific guidelines for managing AHD were released [4]. These promote offering PLHIV a "package of interventions" including rapid OI screening, prompt OI prophylaxis/treatment and accelerated ART initiation. They include a decision-making guide to assist clinicians in rapid implementation of these

measures, since the need for repeated visits has proved to increase pre-ART attrition [16–18]. In this sense, point-of-care (POC) diagnostics are recommended to allow for patient-centred services in a single-visit even in remote healthcare settings [16,19,20]. Although there is a growing body of evidence supporting the benefit of these interventions, their translation into practice remains limited [14,15,21,22].

In January 2018, the *Centro de Investigação em Saúde de Manhiça* (CISM; Manhiça Health Research Centre), in collaboration with the National Tuberculosis Program (NTP) officers in the Manhiça District of Southern Mozambique began implementing a project named Xpatial-TB. This project assessed a novel community-based, TB active case-finding (TB-ACF) strategy among risk-stratified adult and child contacts of all newly diagnosed TB cases registered in the district.

Ancillary to the Xpatial-TB study, we nested a study with two objectives: (i) assessing the burden of AHD among high-risk HIV-positive adults identified through Xpatial-TB; (ii) evaluating the implementation of the WHO-recommended package of care among PLHIV with AHD [4].

2 | METHODS

2.1 | Xpatial-TB (TB-contact tracing) intervention

In 2018, incident TB cases (either pulmonary or extrapulmonary) registered in any TB diagnostic unit in the district and their household and community contacts of any age were visited. These were defined as population living within radii of 40, 70 or 120 m from the index case, depending on the cycle threshold (Ct) values of their Xpert MTB/RIF Ultra (Ultra®) result and population density. Tracing was done using the information provided by the existing Health and Demographic Surveillance System (HDSS), which covers the whole Manhiça district. Xpatial-TB field workers interviewed TB cases and contacts about their HIV-status, offered HIV counselling and testing (HCT). In addition, among those contacts HIV positive or with a positive WHO-four symptom screening (WHO-4SS, any duration of cough, fever, night sweats or weight loss), a sputum sample was obtained through a portable nebulizer as needed. All contacts ≤ 14 years old were booked at the Xpatial-TB study clinic for clinical evaluation including further sampling (nasopharyngeal and/or gastric aspirate, stool) and a chest X-ray for those ≤ 5 years old. Adult contacts newly diagnosed with HIV positive and/or TB positive were given a referral letter to the health system.

2.2 | Study intervention

From 28 May to 31 December 2018, consenting PLHIV ≥ 14 years old reached by Xpatial-TB were offered to participate in this ancillary study if they had been newly diagnosed with HIV, were ART interrupters or had poor ART adherence regardless of the Xpatial-TB status (TB index or contacts). Upon acceptance, a study counsellor visited the consenting participants within 24 hours and offered them a home-counselling session followed by transport to the study clinic, where a clinical officer provided: (i) Clinical evaluation, including the assessment of danger signs (heart rate >120 beats per minute, respiratory rate >30 breaths per minute, systolic blood pressure <90 mmHg, body temperature

$>39^\circ$ Celsius, moderate or severe dehydration, bedridden or needing aid to walk, altered mental state, other neurological problem); (ii) WHO HIV clinical staging; (iii) venous sampling for CD4 cell counts (BD FACS Calibur, BD Biosciences, Franklin Lakes, NJ, USA) and baseline pre-ART safety liver and kidney biochemistry analysis; (iv) a reflex cryptococcal antigen lateral flow assay (CrAg-LFA, Immuno-Mycologics, Inc., OK, USA) that was performed in the laboratory if <200 CD4 cells/ μL ; (v) a urine tuberculosis lateral flow lipoarabinomannan test (TB-LAM, Alere Inc., Waltham, MA, USA) done if any danger sign was present or <200 CD4 cells/ μL and (vi) a digital chest X-Ray (CXR). Of note, CrAg-screening and TB-LAM were not routine of care in the district at the time. The latter was performed by the study officer in the clinic regardless of the TB status of the participants.

Following positive serum CrAg results, lumbar puncture (LP) was done for CrAg testing of cerebrospinal fluid (CSF). The clinician prescribed treatment for OIs including TB and cryptococcal meningitis (CM), isoniazid preventive therapy (IPT) for TB contacts after ruling out TB, cotrimoxazole preventive therapy (CPT) for TB cases regardless of CD4 count and contacts with CD4 <350 cells/ μL and fluconazole preemptive therapy for patients with a positive serum CrAg but no CM. All these interventions were performed at the same single visit. After completing them, participants met again with the study counsellor to discuss readiness for ART initiation. Data collection of this single study visit was captured by the clinical officer and counsellors with tablets using OpenDataKit open-source data-capture software (Figure 1).

2.3 | ART initiation or ART adherence enforcement

On the same day or on the following day for those from most remote locations, the study counsellor accompanied the patient to their public HIV clinic. There, a report of the study visit was delivered to the corresponding public officer for them to make a decision on timing for OI treatment and ART initiation. At this point, the role of the study counsellor was limited to document patient registration, prescriptions and patient picking-up of medication.

Participants included due to suboptimal ART adherence were also escorted to their health units, where they were booked for the routine government programme of adherence counselling and plasma HIV viral load (VL) monitoring as recommended by the National ART guidelines [23,24].

2.4 | Follow-up visits

Participants were followed-up at their respective government health units under routine programmatic conditions. The study was limited to retrieve information from these clinics on visit attendance and prescription refills of the participants. In case a visit record was unavailable, the study counsellor made a maximum of three attempts to trace the participant and advise them to resume their clinic visits (Figure 1).

2.5 | Outcome definitions and mortality

Information on mortality was gathered from the existing HDSS and death registries at each health unit. Loss-to-follow-up (LTFU) was defined as failure to attend the six-month visit

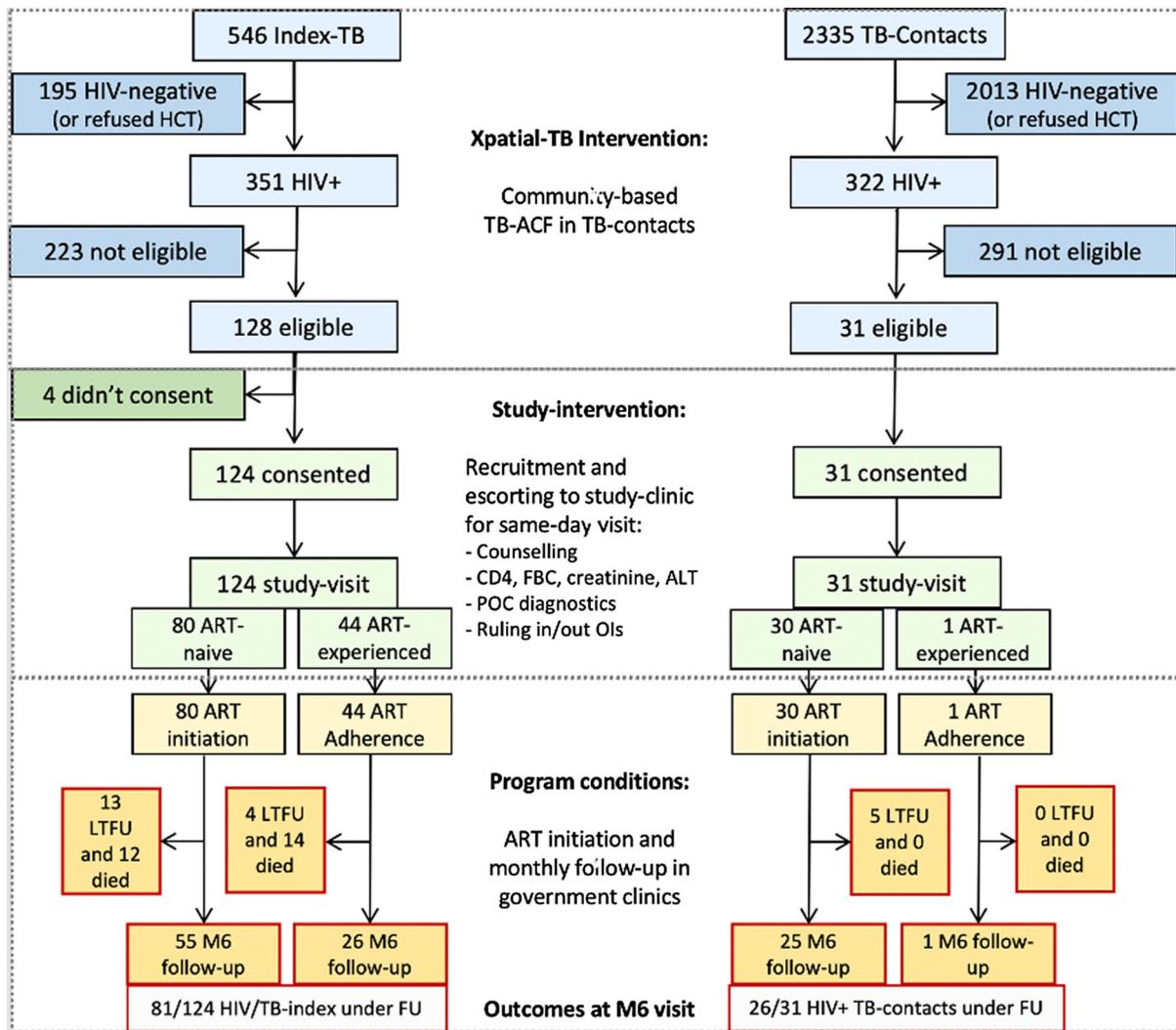


Figure 1. Flow chart of interventions. Blue boxes, Xpatial-TB interventions. Green boxes, study-intervention. Yellow boxes, routine provision of care in district ART units (government health centers). ALT, alanine-amino-transferase; ART, antiretroviral therapy; FBC, full blood count; FU, follow-up; HCT, HIV counselling and testing; LTFU, lost to follow-up; M6, month six; OI, opportunistic Infections; POC, point of care; TB-ACF, tuberculosis active case finding.

within a 30-day window. Attrition was defined as LTFU or death before the sixth scheduled visit.

statistical analyses were conducted using Stata (StataCorp. 2019;StataCorp LLC., College Station, TX, USA).

2.6 | Statistical analysis

Data were described by frequencies and median (interquartile range, IQR) for discrete and continuous variables, respectively. Cox regression was used to assess the effect of potential risk factors on the probability of TB-index cases being retained in care until the sixth month after enrolment. A multivariable Cox proportional hazards model was obtained using a step-wise procedure, starting with a model including variables with clinical relevance defined from literature review (age, sex, severe anaemia, CrAg positivity, TB-LAM positivity and low CD4 count). These variables were kept in the model. Entry and removal criteria for the remaining variables were based on the *p*-value of the univariate analysis (<0.05 and >0.10 respectively). The statistical significance level was set at 0.05. All

3 | RESULTS

Between 28 May and 31 December 2018, 2881 adults were visited in the Xpatial-TB intervention, including 546 TB-index cases and 2335 of their contacts. Of those, 351 (64%) and 322 (14%) were HIV positive, respectively. Overall, eligibility criteria for our ancillary intervention (newly HIV diagnosed, ART naïve, suboptimal ART adherence and ART interrupters) were met by 128 TB-index cases and 31 contacts. Of those, 98% (124/128) TB-index cases and all 31 contacts agreed to enrolment (Figure 1). Of the TB-index cases, 86% (107/124) were pulmonary TB (PTB), of whom 36% (38/107) had a positive Ultra[®] result and 52% (65/124) were hospitalized at the time of enrolment. All 31 contacts were ambulatory (Table 1).

Table 1. Characteristics of the study population

| Variable | Participant type | | |
|--|--------------------------|------------------------|-----------------------|
| | TB-index cases (n = 124) | TB contacts (n = 31) | Total (n = 155) |
| Age, years | 36.0 (30.6 to 44.5) | 34.0 (27.0 to 39.7) | 35.9 (29.9 to 43.8) |
| Male sex | 72 (58) | 11 (35) | 83 (54) |
| Inpatient at recruitment | 65 (52) | 0 | 65 (42) |
| Body mass index ^a , kg/m ² | 19.4 (17.5 to 21.5) | 23.4 (20.8 to 25.6) | 19.9 (17.9 to 23.0) |
| Haemoglobin < 8 g/dL | 29 (23) | 1 (3) | 30 (19) |
| Abnormal ALT (≥1.5 ULN) | 10 (8) | 0 | 10 (6) |
| eGFR<60 mL/min/1.73 m ² | 20 (16) | 0 | 20 (13) |
| CD4 cells/μL | 105.0 (38.5 to 258.5) | 355.0 (255.0 to 605.0) | 132.0 (47.0 to 337.0) |
| Danger signs | 75 (60) | 2 (6) | 77 (50) |
| ART status | | | |
| New case | 28 (23) | 16 (52) | 44 (28) |
| ART naïve | 36 (29) | 5 (16) | 41 (26) |
| Suboptimal adherence | 44 (35) | 1 (3) | 45 (29) |
| Interrupter | 16 (13) | 9 (29) | 25 (16) |
| WHO stage | | | |
| Stage 1 or 2 | 0 | 26 (84) | 26 (17) |
| Stage 3 or 4 | 124 (100) | 5 (16) | 129 (83) |
| CD4 < 100 cells/μL | 60 (48%) | 1 (3%) | 61 (39%) |
| CD4 < 200 cells/μL ^b | 87 (70) | 5 (16) | 92 (59) |
| Advanced HIV disease ^c | 124 (100) | 9 (29) | 133 (86) |

Data are shown as median (IQR) or n (%). ALT, alanine aminotransferase; eGFR, estimated creatinine glomerular filtration rate GFR (CKD-EPI formula); ART, antiretroviral therapy; Danger signs, any of the following present: Heart rate >120 beats per minute, respiratory rate >30 breaths per minute, Systolic blood pressure <90 mmHg, body temperature >39° Celsius, moderate or severe dehydration, bedridden or needing aid to walk, altered mental state, other neurological problem.

^an=153 (two missing values); ^bincludes also those with <100 cells/μL; ^cAHD defined as having CD4 < 200 cells/μL or WHO stage 3 or 4.

3.1 | Characteristics of the study population and prevalence of advance HIV disease

Since TB is a WHO stage 3 or 4 condition, all 124 TB-index cases had AHD by definition. Additionally, other WHO stage 3 or 4 conditions were present in 76% (94/124) of TB index. CD4 counts were <200 cells/μL in 70% (87/124). Of the 31 contacts, five (16%, 5/31) had a WHO stage 3 or 4 condition, including four (13%, 4/31) with TB. Five contacts (16%, 5/31) had <200 CD4 cells/μL. Only one contact met both clinical and immunologic criteria. Overall, any AHD criteria were met by 29% (9/31) of TB contacts (Table 1).

3.2 | Screening and diagnosis of tuberculosis disease and cryptococcosis

Among TB-index cases, 78% (97/124) met TB-LAM testing indications. Of those, 96% (93/97) were TB-LAM tested and 70% (65/93) had a positive result. TB-LAM was the only positive TB-test result in 51% (33/65) and 17% (10/59) of hospitalized and ambulatory TB-index patients, respectively. Overall, Ultra[®] was the only positive TB result in 11% (7/65) and 31% (18/59) of hospitalized and ambulatory TB-index cases, respectively. A CXR was done in 88% (109/124) of TB-index participants, being interpreted as suggestive of TB in 81% (88/109).

Among contacts, 23% (7/31) had a positive WHO-4SS. Tuberculosis was diagnosed in four cases (4/31, 13%) including one that was 4SS-. One diagnosis was obtained only by TB-LAM (4SS+), two only by Ultra[®] (one 4SS+, one 4SS-) and one was clinically diagnosed (4SS+) with a suggestive CXR.

Serum CrAg screening result was available for all 92 eligible participants (CD4 counts ≤200 cells/μL) and was positive in 4.9% (3/61) and 4.3% (4/92) of those with ≤100 and ≤200 CD4 cells/μL respectively. All four CrAg-positive cases were TB-index patients and were performed a CSF-CrAg test that resulted negative in two of them (both were asymptomatic, including the participant with >100 CD4 cells/μL) and positive in two cases that had also disseminated TB and confirmed TB meningitis, respectively. Both had severe neurological symptoms that had been regarded as TB related prior to the serum CrAg-positive result.

3.3 | Prevention and treatment of opportunistic infections

IPT was started for 93% (25/27) TB-free contacts. No new episodes of TB were reported among participants. CPT was provided to 98% (138/141) of cases with ≤350 CD4 cells/μL or TB. Of the four plasma CrAg-positive participants, the two with a negative CSF CrAg started fluconazole pre-emptive therapy. Both were alive and under follow-up at the end of the six-month follow-up. The two TB/CM co-infected (CSF-

CrAg+) continued antitubercular treatment and received short-induction with amphotericin B-deoxycholate and high dose fluconazole followed by six weeks of fluconazole consolidation, after which they started ART and fluconazole maintenance therapy. One was in good health at the end of study follow-up, but the other died seven weeks after ART initiation. The four contacts diagnosed with TB started on TB treatment followed by timely ART initiation and were all alive at the end of the study period.

3.4 | ART initiation

All 80 TB-index cases (80/124, 65%) and 30 contacts (30/31, 97%) that were not on ART at recruitment initiated or resumed ART in the intervention. Of these, 84 TB cases, including all 80 index cases and the four TB contacts diagnosed with TB delayed ART a median of 15 days (IQR 14 to 19) after initiation of antitubercular treatment. The two cases with TB/CM started ART at day 38 and 54 respectively. All TB-negative contacts initiated ART within 48 hours of their recruitment (Figure 2).

3.5 | ART adherence re-enforcing

All 44 TB-index cases (44/124, 35%) and one contact (1/31, 3%) included in the study because of suboptimal ART adherence were counselled and booked in their public clinics for adherence re-enforcement counselling. None of the participants had been switched to second-line ART by the end of the study follow-up. Public officers in district clinics reported to the study that they had sent samples to Mozambique's capital for VL determination as per national guidelines, but no result had been recorded in the files during the six-month study period.

3.6 | Retention and survival

Six-month mortality was 21% (26/124) in TB index of which 88% (23/26) occurred during admission and 0% (0/31) in

contacts. Six-month LTFU occurred in 14% (17/124) of TB index and 16% (5/31) of contacts.

Male sex was the only independent predictor of attrition identified (adjusted Hazard Ratio, aHR 2.18, 95% CI 1.10 to 4.34) adjusted by age, severe anaemia, CrAg positivity, TB-LAM positivity and CD4 count. A trend was observed between severe anaemia and increased hazard of attrition aHR 2.01, 95% CI 0.97 to 4.17 (Table 2).

4 | DISCUSSION

The aim of this study was to describe the burden of advanced HIV disease among TB-index cases and their contacts and to assess the feasibility of implementing the WHO package of interventions for AHD in this population. Key findings of the study are as follows: (i) a high prevalence of AHD among HIV-positive TB contacts (approximately 1/3rd); (ii) a CrAg prevalence over 4% among TB-index cases; (iii) TB-LAM was the only positive TB test in half of TB inpatients (iv) almost 100% initiation of IPT, CPT and fluconazole pre-emptive treatment and 100% coverage of early ART initiation through a same-day community intervention; (v) six-month attrition and mortality comparable with that of historical records among TB cases and no mortality among their HIV-positive contacts, including those with AHD.

We nested an ancillary intervention into an existing community-reach TB-case finding strategy (Xpatial-TB) that was being assayed in a rural district in Mozambique. In seven months, Xpatial-TB had reached 546 adult TB-index cases of whom 351 (64%) were HIV co-infected. Over one-third of these were newly HIV diagnosed, ART interrupters or had suboptimal ART adherence (the present criteria defining our target population). We visited these patients and found a 70% prevalence of AHD based on CD4 counts. This finding aligns with previous reports of suboptimal HIV control among the TB/HIV population [25-31].

During the same timeframe, Xpatial-TB visited 2335 adult TB contacts of whom 322 (14%) were HIV positive. Of them,

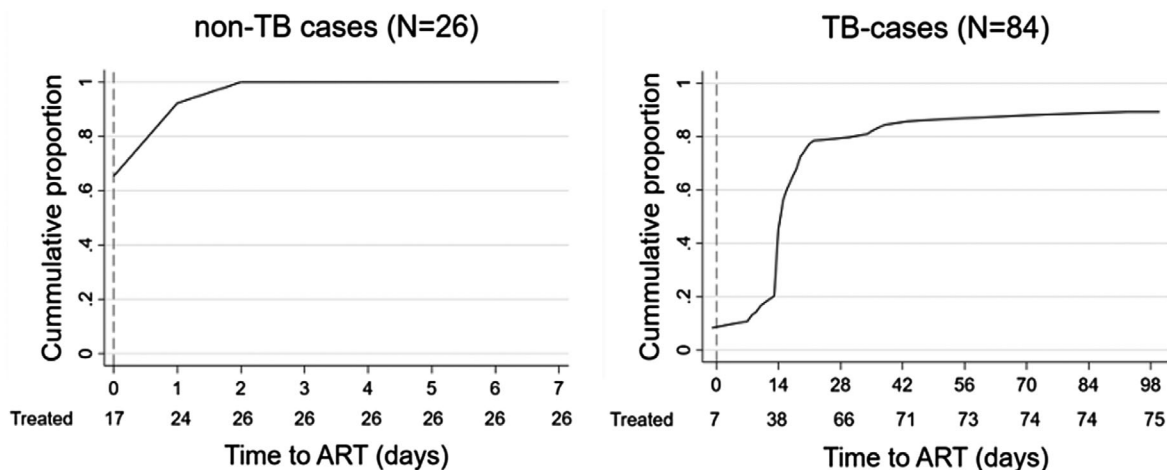


Figure 2. Time to ART-initiation. Daily cumulative proportion of participants (ART-naïve and ART interrupters) starting or resuming ART as part of the intervention ('treated'). Left, TB-free participants; Right, TB cases including TB-index and TB-contacts with TB. Four additional TB-cases started ART 148, 148, 246 and 247 days after enrolment respectively.

Table 2. Factors associated with attrition in TB-index participants

| Variable | Univariable analysis | | | Multivariable analysis | | |
|---|----------------------|---------------------------|---------|------------------------|---------------------------|---------|
| | Crude hazard ratio | (95% confidence interval) | p-value | Adjusted hazard ratio | (95% confidence interval) | p-value |
| Age ^a | 0.99 | (0.96 to 1.01) | 0.297 | 0.98 | (0.95 to 1.01) | 0.149 |
| Male sex | 1.42 | (0.77 to 2.62) | 0.261 | 2.18 | (1.10 to 4.34) | 0.026 |
| Severe anaemia (Hb <8 g/dL) | 2.23 | (1.20 to 4.18) | 0.012 | 2.01 | (0.97 to 4.17) | 0.062 |
| Renal insufficiency (eGFR < 60 mL/min) | 1.13 | (0.55 to 2.32) | 0.732 | – | – | – |
| CrAg positivity | 0.65 | (0.15 to 2.75) | 0.558 | 0.55 | (0.12 to 2.55) | 0.446 |
| TB-LAM positivity | 1.94 | (1.05 to 3.60) | 0.035 | 1.38 | (0.67 to 2.85) | 0.383 |
| Cotrimoxazole preventive therapy | 0.36 | (0.05 to 2.70) | 0.323 | – | – | – |
| Low CD4 (<200 cells/ μ L) | 1.96 | (0.81 to 4.74) | 0.133 | 1.72 | (0.65 to 4.52) | 0.271 |
| Suboptimal adherence versus ART initiated | 1.72 | (0.94 to 3.14) | 0.077 | – | – | – |

Cox regression, crude model (left) and adjusted model (right). Number of subjects = 124. eGFR, Estimated creatinine glomerular filtration rate GFR (CKD-EPI formula).

^aPer unit increase.

31 (10%) met the mentioned criteria, including 30 HIV-positive contacts newly HIV diagnosed and one with suboptimal ART adherence. One-third of these HIV-positive TB contacts had AHD (29%, 9/31), either immunologically defined (CD4 <200 cells/ μ L in 5/9) and/or clinically defined (WHO stage 3 or 4 found in 4/9). The overall proportion of AHD is in line with other AHD surveys from the region [1-3]. TB programme managers should factor in AHD screening and linkage to care of HIV-positive TB contacts when discussing the efficiency of community TB contact-tracing interventions, which have been often regarded as low efficient when the benefit is set only in their TB diagnosis yield [32-39].

CrAg prevalence was 4.3% and 4.9% in those with \leq 200 and \leq 100 CD4 cells/ μ L, respectively, similar to previous estimates of prevalence of cryptococcosis among PLHIV in sub-Saharan Africa (SSA) [7-9,40-42]. Of note, if we had used the 100 cells/ μ L threshold for screening, one out of four CrAg-positive cases would have been missed. All CrAg-positive cases were found among TB patients. When caring for TB/HIV patients, TB officers are facing clinically defined AHD, with a majority of these having low CD4 counts. However, CrAg-screening, a cost-efficient life-saving intervention for patients with AHD, is often missed in the integration of HIV and TB services [28,43-47].

There was no pre-ART attrition in the study. Embedding the intervention within TB-contact tracing and offering a full TB-diagnostic work-up even for asymptomatic HIV-positive TB contacts may have helped acceptance of the clinic visit. HIV counsellors accompanied newly HIV-positive diagnosed participants throughout the day-long process leading up to the first ART pick-up. Other studies have shown the importance of similar escorting strategies to help linkage to care [48,49]. Finally, the same-day full pre-ART evaluation may have helped pre-ART retention when compared to the standard process that entails multiple visits [16,17,32,50,51].

Ninety percent of TB cases started or resumed ART within eight weeks while all TB-free contacts did so within 48 hours of the outreach intervention. Although evidence supports same-day ART initiation, some studies have demonstrated

patient unreadiness or insufficient time to rule-out OIs prior to rapid ART initiation [43,52-57]. Our experience shows that patients' counselling combined with use of POC-based OI-testing is feasible for rapid ART initiation.

Fourteen percent of the study population failed to attend their six-month visit within a 30-day window. Previous studies in Mozambique with less stringent definitions reported higher LTFU proportions [58-60].

Overall mortality in TB-index cases was 21%, which is in line with the results of previous studies in the district [61,62]. The vast majority of these deaths occurred among these TB/HIV cases with AHD during hospital admission. The recommendations for AHD management may need to be tailored to the inpatient population in order to further reduce its high mortality. By contrast, six-month mortality among the 30 contacts starting ART was zero. This is particularly relevant considering that 29% met criteria for AHD at enrolment. Several reasons may account for this. First, the contacts with TB were effectively identified. Detecting TB and cryptococcal infection before ART initiation is critical to avoid immune reconstitution inflammatory syndrome (IRIS), a major cause of early post-ART initiation mortality [5,8,9,11,25,35,63]. Of note, CrAg and TB-LAM study indications were broader than those recommended at the time and performed among all patients with <200 cells/ μ L (regardless of symptoms) to increase operationalization [4,21,64-70]. Finally, all but two contacts received IPT, a life-saving intervention that is still very low implemented [25,32,71-73].

The only independent predictor of attrition found was male sex. We also found a moderate evidence in favour of an association between anaemia, a known predictor of mortality in TB/HIV patients, and a two-fold increase in the hazard of attrition, likely limited by the sample size [74-76]. TB-LAM positivity and enrolment due to poor ART adherence were also significantly associated with attrition in the univariable analysis, both having been reported earlier [19,35,68,77-79]. The latter is a reminder of the alarming fact that today, ART-experienced individuals account for 40% to 60% of AHD cases presenting to care in SSA [1,37,65]. The small sample size warrants a prudent interpretation of these findings.

This study has some limitations. First, integrating our study within an existing community-based TB-contact intervention limits its replicability to similar conditions and may overestimate AHD prevalence, due to the high TB burden of the target population (TB index and contacts). Second, the community intervention would have greatly benefited from POC strip tests discriminating above or below 200 CD4 cells/ μ L on finger-prick samples [80,81]. This would have allowed for off-clinic CD4 count testing, enabling a full home-based POC strategy [19,32]. Also, for those on ART a HIV-VL POC-assay should have followed in order to detect virological failure, beyond targeting those with suboptimal adherence. [82,83]. The lack of POC-CD4 and POC-VL assays in our intervention made it less sensitive and less specific to identify a subgroup of HIV-positive individuals that could have greatly benefited from our intervention. Moreover, under routine programmatic conditions, participants that were clear suspects for ART failure (ART-experienced individuals with TB and/or low CD4 counts) did not benefit from an ART switch during the 6-month follow-up period. WHO recommends expedited ART switch for AHD patients but this has not consistently translated into national recommendations, rather, patients with AHD usually endure the same long process of the general HIV-positive population consisting of VL determinations repeated every three months, which is challenging in districts with non-existent VL-testing capacity [4,28,84–86]. The rollout of multi-disease testing platforms such as GeneXpert which has POC-VL capacity will increase the operationality of the recommended “package of care” for ART-experienced patients with AHD [87,88]. Third, we limited our ancillary intervention to adults because the TB-contact tracing intervention (Xpatial-TB) was already providing children with a provision of care far exceeding the package recommended by the WHO for AHD. Also, due to the limited sample size, we could only estimate risk-factors of attrition in TB-index cases. Finally, our small study sample limited our capacity to draw statistically significant conclusions.

Our study has also several strengths. To our knowledge, it is the first study attempting to use TB-ACF to find AHD cases in the community. The WHO-recommended provision of care was embedded within routine programmatic conditions in a high HIV and TB burden area. Also, it provides the first published estimates of CrAg prevalence among TB/HIV patients in Mozambique. Moreover, TB diagnosis in HIV-positive TB contacts was based on novel assays including Ultra[®] and TB-LAM, not always routinely available. Finally, this is the first experience that we know reporting the capacity to achieve same-day ART initiation in newly HIV-diagnosed TB contacts reached in their communities.

5 | CONCLUSIONS

This study unveiled a high burden of AHD, TB and cryptococcosis in a rural district of Mozambique and showed that TB contact-tracing in communities offers an opportunity for TB-HIV programmes to enhance detection and survival of HIV patients by identifying AHD cases and providing them with the WHO-recommended package of care. Same-day ART initiation was possible and safe in HIV-positive TB-free contacts with zero deaths among them. This POC-based intervention

exemplifies that comprehensive care provision is possible for patients with AHD in rural settings. If taken to scale, this strategy could contribute to reducing the still unacceptably high AIDS-mortality in sub-Saharan Africa.

ETHICS

This study was approved by the Institutional Review Board at CISM and the National Ethics Committee of Mozambique. The United States Centre for Disease Control and Prevention (CDC) received a determination of “non-engaged in human subjects research” prior to the study. All participants provided voluntary written informed consent before enrolment.

AUTHORS' AFFILIATIONS

¹ISGlobal, Hospital Clínic-Universitat de Barcelona, Barcelona, Spain; ²Centro de Investigação em Saude de Manhica (CISM), Manhica, Mozambique; ³Mycotic Diseases Branch, United States Centers for Disease Control and Prevention (CDC), Atlanta, GA, USA; ⁴National Tuberculosis Program, Manhica, Mozambique; ⁵PhD Program in Methodology of Biomedical Research, Faculty of Medicine, University of Barcelona, Barcelona, Spain; ⁶Internal Medicine Department, Hospital Universitari de Bellvitge, Barcelona, Spain; ⁷Department of Infectious Diseases Hospital del Mar, Hospital del Mar Research Institute (IIMIM), Barcelona, Spain

COMPETING INTERESTS

The authors declare no conflict of interest.

AUTHORS' CONTRIBUTIONS

All authors contributed to the content and preparation of the manuscript and approved the final draft. Specific contributions: SI drafted the manuscript, and performed a literature review; SI, AM, AJ, GG, NC, HC, BS, JG and AB contributed to data collection and data analysis; AF and AC performed the statistical analysis. TC, TN, AG and EL provided expert opinion and revision of the manuscript for important content.

ACKNOWLEDGEMENT

None declared.

FUNDING

The Xpatial-TB study was funded by STOP-TB partnership under a wave 5 TB-REACH award. The present ancillary study was funded by the CDC Foundation Grant No. 950 (<https://www.cdcfoundation.org/what/program/global-cryptococcal-meningitis-screening>). CISM is supported by the Government of Mozambique and the Spanish Agency for International Development (AECID). ISGlobal is a member of the CERCA Programme, Generalitat de Catalunya. TN is supported by a career development fellowship co-funded by the EDCTP (European and Developing Countries Clinical Trials Partnership) and the Calouste Gulbenkian Foundation (Portugal) (grant number: TMA2017CDF-1927 – Preg_multidrug). EL is supported by a Juan Rodés fellowship from the Ministry of Science and Innovation of the Spanish Government.

REFERENCES

- Osler M, Hilderbrand K, Goemaere E, Ford N, Smith M, Meintjes G, et al. The continuing burden of advanced HIV disease over 10 years of increasing antiretroviral therapy coverage in South Africa. *Clin Infect Dis*. 2018;66 (suppl_2):S118–S25.
- Lamp K, McGovern S, Fong Y, Atem CD, Nfetam JBE, Nzuobontane D, et al. Proportions of CD4 test results indicating advanced HIV disease remain consistently high at primary health care facilities across four high HIV burden countries. *PLoS One*. 2020;15(1):1–11.
- Carmona S, Bor J, Nattey C, Maughan-Brown B, Maskew M, Fox MP, et al. Persistent high burden of advanced HIV disease among patients seeking care in

- South Africa's national HIV program: data from a nationwide laboratory cohort. *Clin Infect Dis*. 2018;66(S2):S111–S7.
4. World Health Organization. Guidelines for managing advanced HIV disease and rapid initiation of antiretroviral therapy. 2017.
 5. Karat AS, Omar T, Von Gottberg A, Tlali M, Chihota VN, Churchyard GJ, et al. Autopsy prevalence of tuberculosis and other potentially treatable infections among adults with advanced HIV enrolled in out-patient care in South Africa. *PLoS One*. 2016;11(11):e0166158.
 6. Teasdale CA, Yuengling K, Preko P, Syowai M, Ndagije F, Rabkin M, et al. Persons living with HIV with advanced HIV disease: need for novel care models. *J Int AIDS Soc*. 2018;21(12):1–9.
 7. Rajasingham R, Smith RM, Park BJ, Jarvis JN, Govender NP, Chiller TM, et al. Global burden of disease of HIV-associated cryptococcal meningitis: an updated analysis. *Lancet Infect Dis*. 2017;17(8):873–81.
 8. Nalinya E, Meya DB, Lofgren S, Huppler Hullsiek K, Boulware DR, Rajasingham R. A prospective evaluation of a multisite cryptococcal screening and treatment program in HIV clinics in Uganda. *J Acquir Immune Defic Syndr*. 2018;78(2):231–8.
 9. Liechty CA, Solberg P, Were W, Ekwaru JP, Ransom RL, Weidle PJ, et al. Asymptomatic serum cryptococcal antigenemia and early mortality during antiretroviral therapy in rural Uganda. *Trop Med Int Health*. 2007;12(8):929–35.
 10. Ford N, Matteelli A, Shubber Z, Hermans S, Meintjes G, Grinsztejn B, et al. TB as a cause of hospitalization and in-hospital mortality among people living with HIV worldwide: a systematic review and meta-analysis. *J Int AIDS Soc*. 2016;19(1):20714.
 11. Worodria W, Massinga-Loembe M, Mazakpwe D, Luzinda K, Menten J, Van Leth F, et al. Incidence and predictors of mortality and the effect of tuberculosis immune reconstitution inflammatory syndrome in a cohort of TB/HIV patients commencing antiretroviral therapy. *J Acquir Immune Defic Syndr*. 2011;58(1):32–7.
 12. Gupta RK, Lucas SB, Fielding KL, Lawn SD. Prevalence of tuberculosis in post-mortem studies of HIV-infected adults and children in resource-limited settings. *AIDS*. 2015;29(15):1987–2002.
 13. Grimsrud A, Barnabas RV, Ehrenkranz P, Ford N. Evidence for scale up: the differentiated care research agenda. *J Int AIDS Soc*. 2017;20(Suppl 4):1–6.
 14. Prabhu S, Harwell JI, Kumarasamy N. Advanced HIV: diagnosis, treatment, and prevention. *Lancet HIV*. 2019;6(8):e540–e51.
 15. Ford N, Meintjes G, Calmy A, Bygrave H, Migone C, Vitoria M, et al. Managing advanced HIV disease in a public health approach. *Clin Infect Dis*. 2018;66(Suppl 2):S106–S10.
 16. Fox MP, Rosen S, Geldsetzer P, Bärnighausen T, Negussie E, Beanland R. Interventions to improve the rate or timing of initiation of antiretroviral therapy for HIV in sub-Saharan Africa: meta-analyses of effectiveness: meta-analyses. *J Int AIDS Soc*. 2016;19(1):20888.
 17. Da Silva M, Blevins M, Wester CW, Manjolo J, José E, Gonzalez LC, et al. Patient loss to follow-up before antiretroviral therapy initiation in rural Mozambique. *AIDS Behav*. 2015;19(4):666–78.
 18. Hoffman S, Exner TM, Lince-Deroche N, Leu CS, Phillip JL, Kelvin EA, et al. Immediate blood draw for CD4+ cell count is associated with linkage to care in Durban, South Africa: findings from pathways to engagement in HIV care. *PLoS One*. 2016;11(10):1–16.
 19. Drain PK, Rousseau C. Point-of-care diagnostics. *Curr Opin HIV AIDS*. 2017;12(2):175–81.
 20. Vojnov L, Markby J, Boeke C, Harris L, Ford N, Peter T. POC CD4 testing improves linkage to HIV care and timeliness of ART initiation in a public health approach: a systematic review and meta-analysis. *PLoS One*. 2016;11(5):1–13.
 21. Ndlovu Z, Burton R, Stewart R, Bygrave H, Roberts T, Fajardo E, et al. Viewpoint framework for the implementation of advanced HIV disease diagnostics in sub-Saharan Africa: programmatic perspectives. *Lancet HIV*. 2020;S2352–3018(20):30101–6.
 22. Blankley S, Gashu T, Ahmad B, Belaye AK, Ringtho L, Mesic A, et al. Lessons learned: retrospective assessment of outcomes and management of patients with advanced HIV disease in a semi-urban polyclinic in Epworth, Zimbabwe. *PLoS One*. 2019;14(4):1–14.
 23. Direção Nacional de Saúde Pública, Ministério da Saúde. Tratamento Antiretroviral e Infecções Oportunistas do Adulto, Adolescente, Grávida e Criança. 2016.
 24. Direção Nacional de Saúde Pública, Ministério da Saúde. Seminário sobre uso de Carga Viral para Avaliação de Pacientes HIV + em Moçambique. Manual de Participante. 2016.
 25. Kufa T, Mngomezulu V, Charalambous S, Hanifa Y, Fielding K, Grant AD, et al. Undiagnosed tuberculosis among HIV clinic attendees: association with antiretroviral therapy and implications for intensified case finding, isoniazid preventive therapy, and infection control. *J Acquir Immune Defic Syndr*. 2012;60(2):22–8.
 26. Knight M, Van Zyl RL, Sanne I, Bassett J, Van Rie A. Impact of combination antiretroviral therapy initiation on adherence to antituberculosis treatment. *South Afr J HIV Med*. 2015;16(1):1–6.
 27. Gesesew HA, Ward P, Woldemichael K, Mwanri L. Prevalence, trend and risk factors for antiretroviral therapy discontinuation among HIV-infected adults in Ethiopia in 2003–2015. *PLoS One*. 2017;12(6):1–16.
 28. Braun A, Sekaggya-Wiltshire C, Scherrer AU, Magambo B, Kambugu A, Fehr J, et al. Early virological failure and HIV drug resistance in Ugandan adults co-infected with tuberculosis. *AIDS Res Ther*. 2017;14(1):1–6.
 29. Cohen DB, Davies G, Malwafu W, Mangochi H, Joekes E, Greenwood S, et al. Poor outcomes in recurrent tuberculosis: more than just drug resistance? *PLoS One*. 2019;14(5):1–13.
 30. Bisson GP, Zetola N, Collman RG. Persistent high mortality in advanced HIV/TB despite appropriate antiretroviral and antitubercular therapy: an emerging challenge. *Curr HIV/AIDS Rep*. 2015;12(1):107–16.
 31. González R, Augusto OJ, Mungambe K, Pierrat C, Pedro EN, Sacoor C, et al. HIV incidence and spatial clustering in a rural area of southern Mozambique. *PLoS One*. 2015;10(7):1–13.
 32. Page-Shipp L, Lewis JJ, Velen K, Senoge S, Zishiri E, Popane F, et al. Household point of care CD4 testing and isoniazid preventive therapy initiation in a household TB contact tracing programme in two districts of South Africa. *PLoS One*. 2018;13(3):1–12.
 33. Nishikiori N, Van Weezenbeek C. Target prioritization and strategy selection for active case-finding of pulmonary tuberculosis: a tool to support country-level project planning. *BMC Public Health*. 2013;13(1):97.
 34. Yuen CM, Agaya J, Mchembere W, Okelloh D, Achola M, Opole J, et al. Optimizing the efficiency of tuberculosis active case-finding in health facilities and communities. *Int J Tuberc Lung Dis*. 2018;2019(23):844–9.
 35. Abimbola TO, Marston BJ, Date AA, Blandford JM, Sangrujee N, Wiktor SZ. Cost-effectiveness of tuberculosis diagnostic strategies to reduce early mortality among persons with advanced HIV infection initiating antiretroviral therapy. *J Acquir Immune Defic Syndr*. 2012;60(1):1–7.
 36. Kranzer K, Afnan-Holmes HTK. The benefits to communities and individuals of screening for active tuberculosis disease: a systematic review. *Int J Tuberc Lung Dis*. 2013;17(4):432–46.
 37. Blok L, Sahu S, Creswell J, Alba S, Stevens R, Bakker MI. Comparative meta-analysis of tuberculosis contact investigation interventions in eleven high burden countries. *PLoS One*. 2015;10(3):1–18.
 38. Little KM, Msandiwa R, Martinson N, Golub J, Chaisson R, Dowdy D. Yield of household contact tracing for tuberculosis in rural South Africa. *BMC Infect Dis*. 2018;18(1):1–8.
 39. Hanrahan CF, Nonyane BAS, Mmolawa L, West NS, Siwelana T, Lebina L, et al. Contact tracing versus facility-based screening for active TB case finding in rural South Africa: a pragmatic cluster-randomized trial (Kharitode TB). *PLoS Med*. 2019;16(4):e1002796.
 40. Andama AO, den Boon S, Meya D, Cattamanchi A, Worodria W, Davis JL, et al. Prevalence and outcomes of cryptococcal antigenemia in HIV-seropositive patients. *J Acquir Immune Defic Syndr*. 2014;63(2):189–94.
 41. Awotiwon AA, Johnson S, Rutherford GW, Meintjes G, Eshun-Wilson I. Primary antifungal prophylaxis for cryptococcal meningitis in HIV-positive people. *Cochrane Database Syst Rev*. 2018;2018(8):CD004773.
 42. Sacarlal J, Denning DW. Estimated burden of serious fungal infections in Mozambique. *J Fungi*. 2018;4(2).
 43. Worodria W, Sempijja V, Hanrahan C, Ssegonja R, Mazakpwe D, Mayanja-Kizza H, et al. Opportunistic diseases diminish the clinical benefit of immediate antiretroviral therapy in HIV-tuberculosis co-infected adults with low CD4 counts. *AIDS*. 2018;32(15):1–16.
 44. Yasry S, Wiwanitkit V. Cryptococcal antigenemia screening among human immunodeficiency virus-infected cases with tuberculosis: chance and cost effectiveness. *Int J Mycobacteriol*. 2018;7(4):395–6.
 45. Herce ME, Morse J, Luhanga D, Harris J, Smith HJ, Besa S, et al. Integrating HIV care and treatment into tuberculosis clinics in Lusaka, Zambia: results from a before-after quasi-experimental study. *BMC Infect Dis*. 2018;18(1):1–12.
 46. Burnett SM, Zawedde-Muyanja S, Hermans SM, Weaver MR, Colebunders R, Manabe YC. Effect of TB/HIV integration on TB and HIV indicators in rural Ugandan health facilities. *J Acquir Immune Defic Syndr*. 2018;79(5):605–11.
 47. Sinai I, Cleghorn F, Kinkel HF. Improving management of tuberculosis in people living with HIV in South Africa through integration of HIV and tuberculosis services: a proof of concept study. *BMC Health Serv Res*. 2018;18(1):1–13.
 48. Ruzagira E, Baisley K, Kamali A, Biraro S, Grosskurth H, Wringe A, et al. Linkage to HIV care after home-based HIV counselling and testing in sub-Saharan Africa: a systematic review. *Trop Med Int Health*. 2017;22(7):807–21.
 49. MacKellar D, Williams D, Bhembe B, et al. Peer-delivered linkage case management and same-day ART initiation for men and young persons with HIV

- infection – Eswatini, 2015–2017. *MMWR Morb Mortal Wkly Rep.* **2018**;67(23):663–7.
50. Fox MP, Rosen S, Geldsetzer P, Bärnighausen T, Negussie E, Beanland R. Interventions to improve the rate or timing of initiation of antiretroviral therapy for HIV in sub-Saharan Africa: meta-analyses of effectiveness. *J Int AIDS Soc.* **2016**;19(1):20888.
51. Inguane CA, Gloyd S, Manuel JL, Brown C, Wong V, Augusto O, et al. Assessment of linkages from HIV testing to enrolment and retention in HIV care in central Mozambique. *J Int AIDS Soc.* **2016**;19(Suppl 4):1–8.
52. Rosen S, Maskew M, Fox MP, Nyoni C, Mongwenyana C, Malette G, et al. Initiating antiretroviral therapy for HIV at a patient's first clinic visit: the RapIT randomized controlled trial. *PLoS Med.* **2016**;13(5):1–19.
53. Labhardt ND, Ringera I, Lejone TI, Klimkait T, Muhairwe J, Amstutz A, et al. Effect of offering same-day ART vs usual health facility referral during home-based HIV testing on linkage to care and viral suppression among adults with HIV in Lesotho: the CASCADE randomized clinical trial. *J Am Med Assoc.* **2018**;319(11):1103–12.
54. Koenig SP, Dorvil N, Dévieux JG, Hedt-Gauthier BL, Riviere C, Faustin M, et al. Same-day HIV testing with initiation of antiretroviral therapy versus standard care for persons living with HIV: a randomized unblinded trial. *PLoS Med.* **2017**;14(7):1–15.
55. Chan AK, Kanike E, Bedell R, Mayuni I, Manyera R, Mlotha W, et al. Same day HIV diagnosis and antiretroviral therapy initiation affects retention in Option B+ prevention of mother-to-child transmission services at antenatal care in Zomba district, Malawi. *J Int AIDS Soc.* **2016**;19(1):1–6.
56. Boyd MA, Boffito M, Castagna A, Estrada V. Rapid initiation of antiretroviral therapy at HIV diagnosis: definition, process, knowledge gaps. *HIV Med.* **2019**;20(3):3–11.
57. Ford N, Migone C, Calmy A, Kerschberger B, Kanters S, Nsanzimana S, et al. Benefits and risks of rapid initiation of antiretroviral therapy. *AIDS.* **2018**;32(1):17–23.
58. Molino L, Kumar AMV, Isaakidis P, Van den Bergh R, Khogali M, Hinderaker SG, et al. High attrition among HIV-infected patients with advanced disease treated in an intermediary referral center in Maputo, Mozambique. *Glob Health Action.* **2014**;7(1):1–8.
59. Lopez-Varela E, Fuente-Soro L, Augusto OJ, Sacoar C, Nhalo A, Karajanes E, et al. Continuum of HIV care in rural Mozambique: the implications of HIV testing modality on linkage and retention. *J Acquir Immune Defic Syndr.* **2018**;78(5):527–35.
60. Blevins M, José E, Bilhete FR, Vaz LME, Shepherd BE, Audet CM, et al. Two-year death and loss to follow-up outcomes by source of referral to HIV care for HIV-infected patients initiating antiretroviral therapy in rural Mozambique. *AIDS Res Hum Retroviruses.* **2015**;31(2):198–207.
61. García-Basteiro AL, Respeito D, Augusto OJ, López-Varela E, Sacoar C, Sequera VG, et al. Poor tuberculosis treatment outcomes in southern Mozambique (2011–2012). *BMC Infect Dis.* **2016**;16:1–9.
62. García-Basteiro AL, Miranda Ribeiro R, Brew J, Sacoar C, Valencia S, Bulo H, et al. Tuberculosis on the rise in southern Mozambique. *Eur Respir J.* **2017**;49(3):1997–2012.
63. Pac L, Horwitz MM, Namutebi AM, Auerbach BJ, Semeere A, Namulema T, et al. Implementation and operational research: integrated pre-antiretroviral therapy screening and treatment for tuberculosis and cryptococcal antigenemia. *J Acquir Immune Defic Syndr.* **2015**;68(5):e69–e76.
64. Floridia M, Ciccacci F, Andreotti M, Hassane A, Sidumo Z, Magid NA, et al. Tuberculosis case finding with combined rapid point-of-care assays (Xpert MTB/RIF and Determine TB LAM) in HIV-positive individuals starting antiretroviral therapy in Mozambique. *Clin Infect Dis.* **2017**;65(11):1878–83.
65. López-Varela E, Respeito D, Blanco S, Gimo M, Sacoar C, Naniche D, et al. High yield of home-based TB diagnosis among newly diagnosed patients with HIV. *J Acquir Immune Defic Syndr.* **2019**;80(4):e103–5.
66. Beyanga M, Kidenya BR, Gerwing-Adima L, Ochodo E, Mshana SE, Kasang C. Investigation of household contacts of pulmonary tuberculosis patients increases case detection in Mwanza city, Tanzania. *BMC Infect Dis.* **2018**;18(1):1–8.
67. World Health Organization (WHO). The use of lateral flow urine lipoarabinomannan assay (LF-LAM) for the diagnosis and screening of active tuberculosis in people living with HIV. Policy guidance. **2015**.
68. Huerga H, Mathabire Rucker SC, Cossa L, Bastard M, Amoros I, Manhiça I, et al. Diagnostic value of the urine lipoarabinomannan assay in HIV-positive, ambulatory patients with CD4 below 200 cells/ μ l in 2 low-resource settings: a prospective observational study. *PLoS Med.* **2019**;16(4):1–17.
69. World Health Organization. Guidelines for the diagnosis, prevention and management of cryptococcal disease in HIV-infected adults, adolescents and children: supplement to the 2016 consolidated guidelines on the use of antiretroviral drugs for treating and preventing HIV infection. [Internet]. **2018**. pp. 1–55.
- World Health Organization. Lateral flow urine lipoarabinomannan assay (LF-LAM) for the diagnosis of active tuberculosis in people living with HIV. Policy update (WHO/CDS/TB/2019.16). **2019**.
71. Harries AD, Schwoebel V, Monedero-Recuero I, Aung TK, Chadha S, Chiang CY, et al. Challenges and opportunities to prevent tuberculosis in people living with HIV in low-income countries. *Int J Tuberc Lung Dis.* **2019**;23(2):241–51.
72. Charles MK, Lou LM, Wester CW, Blevins M, Sterling TR, Dung NT, et al. Implementation of tuberculosis intensive case finding, isoniazid preventive therapy, and infection control (“Three I’s”) and HIV-tuberculosis service integration in lower income countries. *PLoS One.* **2016**;11(4):1–12.
73. Meya DB, Manabe YC, Castelnovo B, Cook BA, Ali M, Kambugu A, et al. Serum cryptococcal antigen (CRAG) screening is a cost-effective method to prevent death in HIV-infected persons with CD4 \leq 100/ μ l starting HIV therapy in resource-limited settings. *Clin Infect Dis.* **2010**;51(4):448–55.
74. Gupta-Wright A, Corbett EL, Wilson D, Van Oosterhout JJ, Dheda K, Huerga H, et al. Risk score for predicting mortality including urine lipoarabinomannan detection in hospital inpatients with HIV-associated tuberculosis in sub-Saharan Africa: Derivation and external validation cohort study. *PLoS Med.* **2019**;16(4):1–20.
75. Morrill HJ, Pogue JM, Kaye KS, Laplante KL. Anemia blood transfusion requirements and mortality risk in human immunodeficiency virus-infected adults requiring acute medical admission to hospital in South Africa. *Open Forum Infect Dis.* **2015**;1–8.
76. Kerkhoff AD, Wood R, Cobelens FG, Gupta-Wright A, Bekker LG, Lawn SD. The predictive value of current haemoglobin levels for incident tuberculosis and/or mortality during long-term antiretroviral therapy in South Africa: a cohort study. *BMC Med.* **2015**;13(1):70.
77. Lawn SD, Kerkhoff AD, Burton R, Schutz C, Boule A, Vogt M, et al. Diagnostic accuracy, incremental yield and prognostic value of Determine TB-LAM for routine diagnostic testing for tuberculosis in HIV-infected patients requiring acute hospital admission in South Africa: a prospective cohort. *BMC Med.* **2017**;15(1):67.
78. Kerkhoff AD, Barr DA, Schutz C, Burton R, Nicol MP, Lawn SD, et al. Disseminated tuberculosis among hospitalised HIV patients in South Africa: a common condition that can be rapidly diagnosed using urine-based assays. *Sci Rep.* **2017**;7(1):1–11.
79. Sabur NF, Esmail A, Brar MS, Dheda K. Diagnosing tuberculosis in hospitalised HIV-infected individuals who cannot produce sputum: is urine lipoarabinomannan testing the answer? *BMC Infect Dis.* **2017**;17(1):1–6.
80. Larson BA, Schnippel K, Brennan A, Long L, Xulu T, Maotoe T, et al. Same-day CD4 testing to improve uptake of HIV care and treatment in South Africa: Point-of-care is not enough. *AIDS Res Treat.* **2013**;2013:6–10.
81. Ndlovu Z, Massaquoi L, Bangwen NE, Batumba JN, Bora RU, Mbuaya J, et al. Diagnostic performance and usability of the VISITECT CD4 semi-quantitative test for advanced HIV disease screening. *PLoS One.* **2020**;15(4):1–11.
82. Drain PK, Dorward J, Bender A, Lillis L, Marinucci F, Sacks J, et al. Point-of-care HIV viral load testing: an essential tool for a sustainable global HIV/AIDS response. *Clin Microbiol Rev.* **2019**;32(3):e00097-18.
83. Dorward J, Drain PK, Garrett N. Point-of-care viral load testing and differentiated HIV care. *Lancet HIV.* **2018**;5(1):e8–9.
84. Shroufi A, Van Cutsem G, Cambiano V, Bansi-Matharu L, Duncan K, Murphy RA, et al. Simplifying switch to second-line antiretroviral therapy in sub-Saharan Africa: predicted effect of using a single viral load to define efavirenz-based first-line failure. *AIDS.* **2019**;33(10):1635–44.
85. Bell Gorrod H, Fox MP, Boule A, Prozesky H, Wood R, Tanser F, et al. The impact of delayed switch to second-line antiretroviral therapy on mortality, depending on failure time definition and CD4 count at failure. *Am J Epidemiol.* **2020**;189(8):811–9.
86. Rohr JK, Ive P, Robert Horsburgh C, Berhanu R, Shearer K, Maskew M, et al. Marginal structural models to assess delays in second-line HIV treatment initiation in South Africa. *PLoS One.* **2016**;11(8):1–11.
87. Ndlovu Z, Fajardo E, Mbofana E, Maparo T, Garone D, Metcalf C, et al. Multidisease testing for HIV and TB using the GeneXpert platform: a feasibility study in rural Zimbabwe. *PLoS One.* **2018**;13(3):1–13.
88. Moyo S, Mohammed T, Wirth KE, Prague M, Bennett K, Holme P. Point-of-care cepheid xpert HIV-1 viral load test in rural African communities is feasible and reliable. *J Clin Microbiol.* **2016**;54(12):3050–5.