

# Epidemiology of Inflammatory Bowel Disease across the Ages in the Era of Advanced Therapies

Bénédicte Caron,<sup>a,b,c,d</sup> Sailish Honap,<sup>c,e, </sup> Laurent Peyrin-Biroulet<sup>a,b,c,d,f</sup>

<sup>a</sup>Department of Gastroenterology, Nancy University Hospital, F-54500 Vandœuvre-lès-Nancy, France

<sup>b</sup>INSERM, NGERE, University of Lorraine, F-54000 Nancy, France

<sup>c</sup>INFINY Institute, Nancy University Hospital, F-54500 Vandœuvre-lès-Nancy, France

<sup>d</sup>FHU-CURE, Nancy University Hospital, F-54500 Vandœuvre-lès-Nancy, France

<sup>e</sup>School of Immunology and Microbial Sciences, King's College London, London, UK

<sup>f</sup>Division of Gastroenterology and Hepatology, McGill University Health Centre, Montreal, Quebec, Canada

Corresponding author: Prof. Laurent Peyrin-Biroulet, MD, PhD, INSERM NGERE U1256 and Department of Gastroenterology, Nancy University Hospital, University of Lorraine, 1 Allée du Morvan, 54511 Vandoeuvre-lès-Nancy, France. Tel: +33-383-153-661; Fax: +33-383-153-633; Email: [peyrinbiroulet@gmail.com](mailto:peyrinbiroulet@gmail.com)

## Abstract

**Background and Aims:** The incidence of inflammatory bowel diseases [IBD] has risen over the past decade to become a global issue. The objectives of this review were to describe the incidence and/or prevalence of IBD in the era of advanced therapies, and to describe the association between environmental risk factors and both pathogenesis and disease course across the ages.

**Methods:** We performed a search of English language publications listed in PubMed regarding the epidemiology of IBD and key environmental factors implicated in IBD from January 2000 to December 2023.

**Results:** Annual incidence rates varied by geographical region with IBD estimates ranging from 10.5 to 46.14 per 100 000 in Europe, 1.37 to 1.5 per 100 000 in Asia and the Middle East, 23.67 to 39.8 per 100 000 in Oceania, 0.21 to 3.67 per 100 000 in South America, and 7.3 to 30.2 per 100 000 in North America. The burden of IBD among children and adolescents, and older people is rising globally. Key environmental factors implicated in IBD pathogenesis include exposure to tobacco smoking, antibiotics, non-steroidal anti-inflammatory drugs, oral contraceptives, infections, and ultra-high processed foods. Breastfeeding and a high-quality diet rich in fruit, vegetables, fish, and other fibre sources are important protective factors. Smoking has consistently been shown to negatively impact disease outcomes for Crohn's disease.

**Conclusion:** The epidemiology of IBD has undergone considerable change in recent decades, with an increase in the burden of disease worldwide. Optimally studying and targeting environmental triggers in IBD may offer future opportunities for disease modification.

**Key Words:** Epidemiology; risk factors; inflammatory bowel disease

## 1. Introduction

Since its first description nearly a century ago in the Western population, the epidemiology of inflammatory bowel disease [IBD] has undergone considerable shifts and it has emerged as a truly global disease over the last two decades.<sup>1</sup>

The global burden of disease is increasingly influenced by the conditions and effects of globalization, including the worldwide dissemination of both infectious and non-infectious public health risks.<sup>2</sup> The impacts on daily life associated with globalization have induced discernible and tangible health consequences in practically all countries around the world. Today's increasing health risks in the Global South are closely related to urbanization and altered lifestyles, especially air pollution, unhealthy diets, physical inactivity, smoking, and excessive alcohol use.<sup>2</sup> The changes in working and living habits and their consequences for physical, mental, and social health contribute to the global harmonization of diseases. In many developing and emerging countries, this is associated with a double burden of disease due to the simultaneous occurrence of infectious and non-communicable diseases.<sup>2</sup>

More than 10 years ago, before the era of advanced therapies [biologics and novel small molecule drugs], a systematic literature review evaluated data from 167 studies from Europe [1930–2008], 52 studies from Asia and the Middle East [1950–2008], and 27 studies from North America [1920–2004].<sup>3</sup> The incidence of IBD was increasing or stable in virtually every region of the world that had been studied.<sup>3</sup> The incidence and prevalence of IBD were highest in westernized nations.

By 2020, the newly industrialized countries/regions of Asia and Latin America had seen a rapid rise in incidence.<sup>4</sup> The emergence of IBD in these traditionally low-prevalence regions suggested that the development of IBD might be influenced by environmental risk factors.<sup>3</sup> The increasing incidence of IBD in newly industrialized countries indicates a potential influence of a Western lifestyle, urbanization, and industrialization on risk.<sup>5</sup> Association studies have shown a number of environmental risk factors for IBD, including cigarette smoking, antibiotic use, breastfeeding, and appendectomy.<sup>5</sup> Several environmental factors [smoking prevention,

breastfeeding, a diet high in fibre, judicious use of antibiotics] can be targeted to reduce the incidence of IBD, but different populations [e.g. children, older patients] with different risk factors might require interventions at different time points.<sup>5</sup>

In this context, this narrative review of population-based studies had three main objectives: first, to describe the incidence and/or prevalence of IBD in the era of advanced therapies; second, to explore the association between environmental risk factors and pathogenesis and the effect on disease course over a patient’s lifetime; and third, to discuss key exposome-based interventions that may prevent or attenuate disease onset and offer a true opportunity for disease modification.

## 2. Methods

To identify relevant articles for this narrative review, a MEDLINE literature search was conducted through the PubMed platform for articles published in the English language between January 2000 and December 2023. The following search terms were used ‘inflammatory bowel disease’, ‘Crohn’s disease’, ‘ulcerative colitis’, ‘epidemiology’, ‘incidence’, ‘prevalence’, ‘risk factors’, ‘lifestyle’, ‘smoking’, ‘environment’, ‘diet’, and ‘exposome.’ Secondary references of the retrieved articles were reviewed to identify publications not captured by the electronic search. For key epidemiology studies included in this review, the following data were extracted: first author, year of publication, population, country, period, incidence, prevalence, need for surgery, hospitalization, and mortality. The incidence of IBD was reported using incidence rates, defined as the number of cases in a population over the person-years at risk in the population. The prevalence of IBD was reported as the number of prevalent cases in a defined region per 100 000 population.

## 3. Epidemiology of IBD across the ages

We reviewed the evidence regarding the epidemiology of IBD in the era of biologics and small molecule inhibitors [Figure 1]. Supplementary Table 1 summarizes the main

characteristics of the key epidemiological studies, which were published between 2006 and 2023. Seventeen studies were specifically conducted in paediatric and adolescent populations.<sup>6–22</sup> The 42 incidence studies [Europe,<sup>7,9,13–15,18,19,21,23–34</sup> Asia and the Middle East,<sup>6,10,17,20,35–40</sup> North America,<sup>16,22,41,42</sup> Oceania,<sup>37,43–45</sup> and South America<sup>46–48</sup>] and the 16 prevalence studies [Europe,<sup>24,26,28,30,31,49</sup> North America,<sup>22,50–52</sup> South America,<sup>46,47,53</sup> Asia and the Middle East,<sup>39</sup> and Oceania<sup>44</sup>] were conducted in different geographical regions.

### 3.1. Adult patients with IBD

The annual incidence rates varied by geographical region with IBD estimates ranging from 10.5 to 46.14 per 100 000 in Europe, 1.37 to 1.5 per 100 000 in Asia and the Middle East, 23.67 to 39.8 per 100 000 in Oceania, 0.21 to 3.67 per 100 000 in South America, and 7.3 to 30.2 per 100 000 in North America. Crohn’s disease [CD] estimates ranged from 4.1 to 22.78 per 100 000 in Europe, 0.09 to 3.6 per 100 000 in Asia and the Middle East, 13.23 to 26.0 per 100 000 in Oceania, and 0.04 to 0.64 per 100 000 in South America, and ulcerative colitis [UC] estimates ranging from 3.0 to 23.36 per 100 000 in Europe, 0.69 to 5.0 per 100 000 in Asia and the Middle East, 7.33 to 17.25 per 100 000 in Oceania, and 0.16 to 2.99 per 100 000 in South America. These included incidence rates for the periods from 2000 to 2020 for European studies, 2001 to 2013 for Asian and Middle Eastern studies, 2011 to 2018 for Oceanian studies, and 2000 to 2019 for South American studies.

For prevalence studies, the IBD estimates ranged from 187 to 832 per 100 000 in Europe, 1.83 to 70.1 per 100 000 in South America, and 214.9 to 478.4 per 100 000 in North America. The CD estimates ranged from 61.6 to 178 per 100 000 in Europe, 0.34 to 14.9 per 100 000 in South America, and 146 to 201 per 100 000 in North America. The UC estimates ranged from 99.84 to 191.4 per 100 000 in Europe, 1.45 to 60.1 per 100 000 in South America, and 202 to 238 per 100 000 in North America. The study periods from which these prevalence rates were derived were from 2000 to 2020 for European studies, 2000 to 2019 for South American studies, and 2003 to 2016 for North American studies.

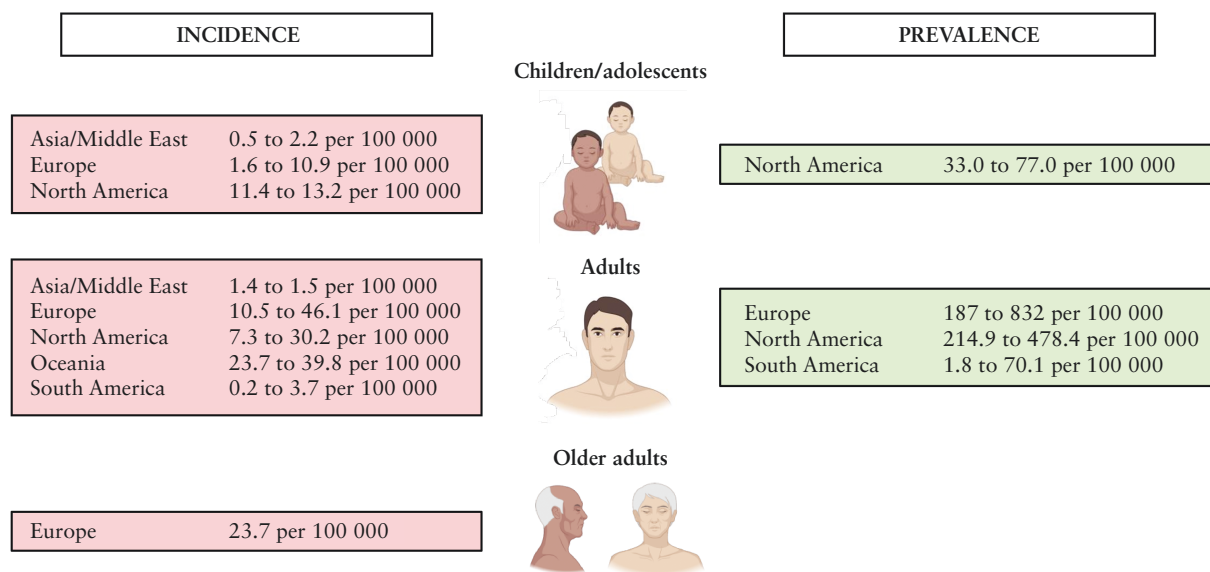


Figure 1. Epidemiology of inflammatory bowel disease across age groups. Figure created with BioRender.

Comparison of population-based data reveals that the incidence of IBD has risen rapidly in the East while plateauing in the West.<sup>54</sup> However, the compounding prevalence of IBD in the West is increasing and is driven by the incidence of IBD exceeding mortality rates.<sup>5</sup> The clinical presentation and disease course of IBD differ between East and West with more patients in the East presenting with complicated disease.<sup>54</sup>

### 3.2. Paediatric and adolescent patients with IBD

The annual incidence rates varied by geographical region, with IBD estimates ranging from 1.59 to 10.9 per 100 000 in Europe, 0.47 to 2.16 per 100 000 in Asia and the Middle East, and 11.4 to 13.2 per 100 000 in North America, CD estimates ranging from 1.7 to 6.8 per 100 000 in Europe, 0.19 to 1.53 per 100 000 in Asia and the Middle East, and 6.0 to 7.9 per 100 000 in North America, and UC estimates ranging from 0.88 to 3.87 per 100 000 in Europe, 0.13 to 0.38 per 100 000 in Asia and the Middle East, and 4.1 to 4.2 per 100 000 in North America. The study periods from which these incidence rates were derived ranged from 2000 to 2018 for European studies, 1998 to 2021 for Asian and Middle Eastern studies, and 2005 to 2009 for North American studies.

For the three North American prevalence studies, the IBD estimates ranged from 33.0 to 77.0 per 100 000, the CD estimates ranged from 19.7 to 28.0 per 100 000, and the UC estimates ranged from 31.6 to 45.9 per 100 000. The burden of IBD among children and adolescents is rising globally.

The Global Burden of Disease [GBD] data describe the state of IBD in children and adolescents, from 1990 to 2019, in 204 countries and territories.<sup>55</sup> Their recent epidemiological analysis showed that incidence cases of IBD increased from 20 897.4 (95% confidence interval [CI] 17 008.6–25 520.2) in 1990 to 25 658.6 [95% CI 21 268.5–31 075.6] in 2019, representing a 22.78% increase, and mortality cases of IBD decreased from 2756.5 [95% CI 1162.6–4484.9] in 1990 to 1208.0 [95% CI 802.4–1651.4] in 2019, representing a 56.17% decrease.<sup>55</sup> The age at which children are being diagnosed with IBD is decreasing.<sup>56</sup>

### 3.3. Older patients with IBD

Older patients now represent the largest growing patient population with IBD.<sup>57</sup> Whilst in 2010, patients aged 65 years and older represented less than 20% of the overall IBD population,<sup>58</sup> current estimates suggest that this group now represents up to 30% in the UK and Canada for example.<sup>59,60</sup> Amongst these, 20% are adult-onset older IBD patients [diagnosed at a younger age and now ageing with IBD]<sup>61–63</sup> and 15% are older adult-onset IBD patients,<sup>3,64,65</sup> defined by a new IBD diagnosis above the age of 60 years. One European study evaluated incidence rates in a population of elderly onset IBD patients, with IBD incidence rate of 23.66 per 100 000, CD incidence rate of 6.23 per 100 000, and UC incidence rate of 17.43 per 100 000.<sup>29</sup>

### 3.4. Surgery rates

Surgery rates ranged from 5.8 to 25% in CD, and 2 to 6.6% in UC in European studies, 7.7 to 46.1% in CD, and 1.6 to 7.1% in UC in Asian and Middle Eastern studies, 22.5 to 46.1% in CD, and 2.8 to 7.1% in UC in North American studies, and 2.9 to 62.5% in CD, and 2.8 to 37.5% in UC in South American studies. In the paediatric and adolescent population, surgery rates ranged from 2.7 to 14.6%.

### 3.5. Hospitalization rates

In the included studies, hospitalization for IBD rates ranged from 43 to 46% in Europe, 31.9 to 55.5% in North America, 31.9 to 55.5% in Asia, and 19.6 to 39.5% in South America. Recently, a systematic review showed that hospitalization rates for IBD are stabilizing in countries in North America, Western Europe, and Oceania, whereas newly industrialized countries [Asia, Eastern Europe, and Latin America] have rapidly increasing hospitalization rates, contributing to an increasing burden on global healthcare systems.<sup>66</sup>

## 4. The exposome in IBD

Advances in genomics over the past two decades have helped identify key pathways implicated in the pathogenesis and pathophysiology of IBD.<sup>67</sup> The heritability of IBD has been demonstrated through familial studies examining IBD risk among first-degree relatives and twins, and genome-wide association studies have highlighted more than 250 susceptibility loci with their functional consequences for intestinal barrier function and both innate and adaptive T cell immunity.<sup>68–72</sup> Although genetic susceptibility remains the strongest risk factor for IBD, it only partly explains disease variance. Susceptibility loci explain ~13.1% and 8.2% of the variance in disease liability for CD and UC, respectively.<sup>70</sup> It is widely accepted that the missing heritability problem is largely driven by external environmental factors and their convoluted interactions with the genome and the intestinal microbiome that modify the risk of developing IBD and its subsequent disease course.<sup>67</sup> The effect of multiple environmental factor exposures may account for the rising global incidence and explain the aforementioned evolving epidemiological trends. The geographical variation in these trends may be due to the exposure of similar environmental risk factors in populations that may share genetic commonalities. Geographical epidemiological variability has been described both intercontinentally and also within certain individual countries.<sup>73</sup> In Europe, for example, although the rapidly rising incidence rates in the east are now similar to those in the west, other persistent differences include a less complicated disease at diagnosis, decreased need for surgery in CD, and lower rates of colorectal cancer in UC compared to the west.<sup>74</sup> Within individual countries, such as the USA, France, Portugal, Spain, and Italy, there is a north-south disease gradient for incidence, whereas Canada demonstrates an east-west disease gradient; these differences are probably due to differing environmental exposures.<sup>73</sup>

The term ‘exposome’ first entered the medical lexicon in 2005 to describe the life-course of environmental and lifestyle factor exposures from the pre-natal period right through childhood and adulthood.<sup>75</sup> Studying the exposome is complicated but has been broadly approached in three ways: recalling risk factors and lifestyle choices over a lifetime compared to matched healthy controls, an ‘-omics’ approach after disease onset to detect cellular-level changes through biospecimens obtained at specified time intervals, and directly studying a potential causative factor through a hypothesis-driven manner with the aim of establishing causality. In this section we describe some of the key environmental factors implicated in IBD, which are stratified by the age groups in which they have been studied in the era of advanced therapies over the past 20 years. This is summarized in [Table 1](#) and [Figure 2](#).

**Table 1.** Summary of environmental risk and protective factors influencing IBD development through the ages.

Risk	Protective
<b>Prenatal and early childhood</b>	
<ul style="list-style-type: none"> <li>• Prenatal maternal tobacco smoking [OR 1.5, 95% CI 1.2–1.9]<sup>76</sup></li> <li>• Prenatal antibiotic exposure [OR 1.8, 95% CI 1.2–2.5]<sup>76</sup></li> <li>• Early life otitis media [OR 2.1, 95% CI 1.2–3.6]<sup>76</sup></li> </ul>	<ul style="list-style-type: none"> <li>• Breastfeeding: CD [OR 0.7, 95% CI 0.6–0.9] and UC [OR 0.8, 95% CI 0.7–0.9]<sup>77</sup></li> </ul> <p>Risk of IBD further decreases with breastfeeding to 1 year versus 3 or 6 months</p> <ul style="list-style-type: none"> <li>• High-quality diet [increased intake of fish and vegetables] at 12 months of age<sup>78</sup></li> </ul>
<b>Adolescence and adulthood</b>	
<ul style="list-style-type: none"> <li>• Urban living for CD [IRR 1.42, 95% CI 1.26–1.60]<sup>79</sup></li> <li>• Non-steroidal anti-inflammatory drugs [OR 1.80, 95% CI 1.23–2.64]<sup>80</sup></li> <li>• Oral contraceptives [greater risk with combined versus progesterone] [OR 2.17, 95% CI 1.70–2.77]<sup>80</sup></li> <li>• Cigarette smoking in CD [OR 1.76, 95% CI 1.40–2.22]<sup>81</sup></li> <li>• Antibiotic use<sup>84</sup>—particularly in: <ul style="list-style-type: none"> <li>◦ those &gt;40 years of age</li> <li>◦ within the first 2 years of exposure</li> <li>◦ with antibiotics used to treat enteric infections</li> </ul> </li> <li>• Prior gastroenteritis [OR 1.55, 95% CI 1.47–1.65].<sup>88,89</sup></li> <li>• Ultra-high processed foods in CD [HR 1.70, 95% CI 1.23–2.35]<sup>90</sup></li> <li>• Western and carnivorous dietary habits with increased fat intake<sup>91,92</sup></li> </ul>	<ul style="list-style-type: none"> <li>• Exposure to farm animals, pets, and bed sharing<sup>1</sup></li> <li>• Fruit for UC and CD [OR 0.69, 95% CI 0.49–0.96]<sup>1</sup></li> <li>• Vegetables for UC [OR 0.71, 95% CI 0.58–0.88]<sup>1</sup></li> <li>• Cigarette smoking in UC—current smoking less likely to develop UC [OR 0.58, 95% CI 0.45–0.75]<sup>81,82</sup> but smoking status after diagnosis does not affect disease course nor outcomes<sup>83</sup></li> <li>• Appendectomy for UC [OR 0.39, 95% CI 0.29–0.52]<sup>85</sup> which reduces the risk of developing UC by as much as 69% [95% CI 62–75%]<sup>86,87</sup></li> <li>• Presence of gastric <i>Helicobacter pylori</i> [OR 0.53, 95% CI 0.44–0.65]<sup>88</sup></li> <li>• Fibre intake for CD [OR 0.59, 95% CI 0.39–0.90]<sup>93</sup></li> </ul>
<b>Older adults [&gt; 60 years]</b>	
<ul style="list-style-type: none"> <li>• Antibiotic use<sup>84</sup></li> </ul>	<ul style="list-style-type: none"> <li>• Mediterranean diet in CD [HR 0.42, 95% CI 0.22–0.80]<sup>94</sup></li> </ul>

Abbreviations: OR, odds ratio; CI, confidence interval; CD, Crohn's disease; UC, ulcerative colitis; HR, hazard ratio. Values specified are risks for IBD unless disease subtype specified.

## 5. Factors affecting the risk of developing IBD

### 5.1. Prenatal and early childhood exposures

Early life events are known to alter the risk of chronic disease development in later life, influenced by the complex interactions between the genome and the epigenome.<sup>95</sup> Epigenetic changes, such as DNA methylation or histone modification [by acetylation or methylation], can occur from environmental influences during critical developmental periods, leading to imprinting and increased susceptibility to IBD.

In a recent systematic review and meta-analysis, Agrawal *et al.* synthesized the findings of 114 case-control or cohort studies that reported an association between early life environmental exposures [prenatal to ≤5 years] and risk of developing IBD.<sup>96</sup> Prenatally, maternal tobacco smoking increased the odds of the infant developing IBD compared to those unexposed (odds ratio [OR] 1.5, 95% CI 1.2–1.9), although this association was not seen when analyses were stratified by disease type.<sup>96</sup> *In utero* exposure to antibiotics, particularly in the third trimester, also increased the odds of developing IBD [OR 1.8, 95% CI 1.2–2.5] though for antibiotic exposure during early childhood, there was a positive but non-significant trend.<sup>96</sup> Mode of delivery did not affect outcomes. Early life infections, particularly otitis media, have also been associated with the future risk of developing IBD [OR 2.1, 95% CI 1.2–3.6]. The maternal intestinal microbiota has been demonstrated to promote the maturation and development of the neonatal immune system, which may in part explain the above findings.<sup>97</sup> This is of key importance for immune-mediated inflammatory

diseases such as IBD and should enable further research exploring environmental exposures at this critical stage of life.

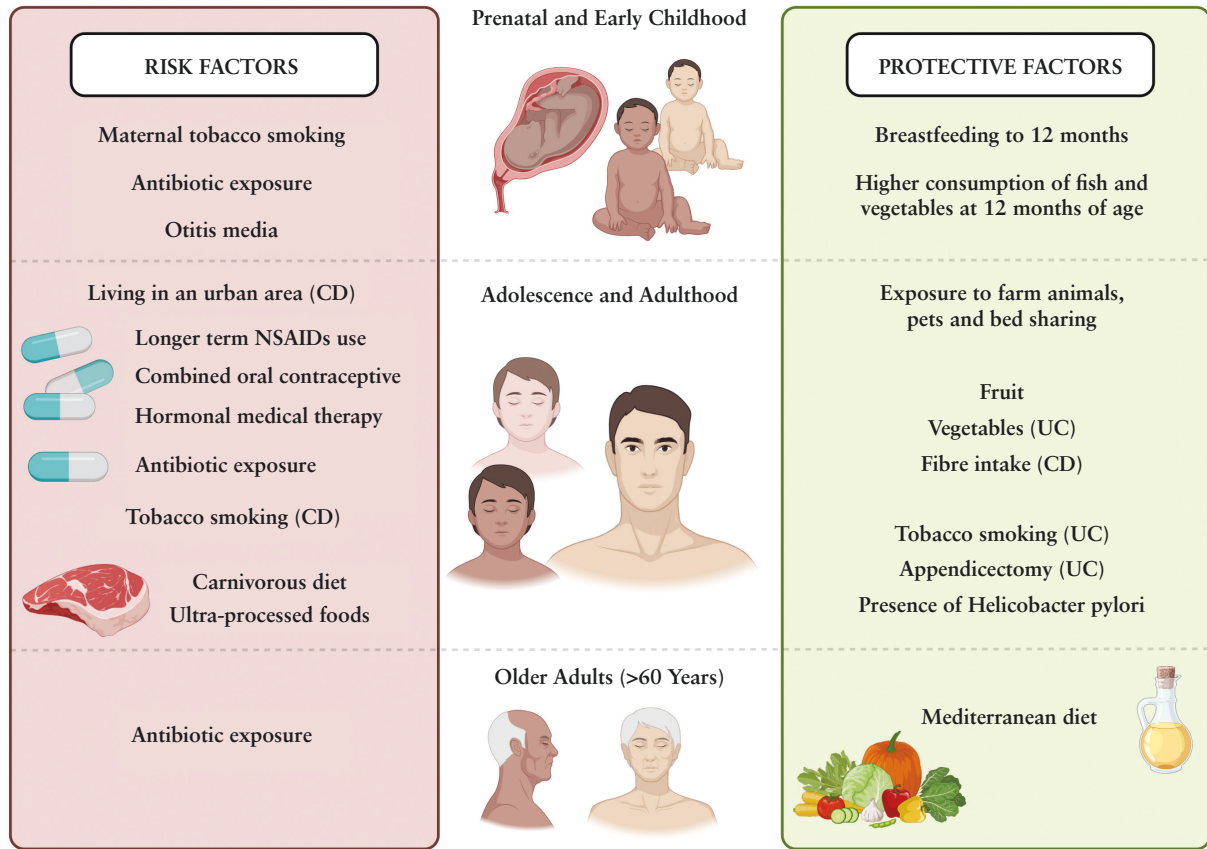
Breastfeeding and a high-quality diet in infants were shown to reduce the risk of IBD. While earlier studies of lower quality in the pre-biologic era showed inconsistent results, more recent data demonstrate that breastfeeding is protective with a strong inverse association between breastfeeding in infancy and the subsequent development of IBD.<sup>98,99</sup> In a systematic review and meta-analysis by Xu *et al.* that included 7536 patients with CD, 7353 with UC, and 330 222 controls, breastfed babies had a reduced risk of CD [OR 0.7, 95% CI 0.6–0.9] and UC [OR 0.8, 95% CI 0.7–0.9].<sup>99</sup> There was a further reduction in the risk of CD [OR 0.2, 95% CI 0.1–0.5] and UC [OR 0.2, 95% CI 0.1–0.4] for babies who were breastfed for at least 12 months versus those fed for 3 or 6 months. At 12 months of age, a recent prospective study by Guo *et al.* established that a diet that consisted of a high intake of vegetables and fish was associated with a reduced risk of subsequent IBD.<sup>76</sup> However, an intake of sugar-sweetened beverages was associated with an increased risk of IBD.

### 5.2. Adolescence and adulthood

#### 5.2.1. Smoking

Cigarette smokers have a 2-fold increased risk of developing CD [OR 1.76, 95% CI 1.40–2.22],<sup>100,101</sup> but a reduced risk of developing UC [OR 0.58, 95% CI 0.45–0.75].<sup>77,78,100</sup> It is unclear if the observational associations with opposing risks of developing CD and UC reflect actual causal associations, confounding, or reverse causation.<sup>102</sup>





**Figure 2.** Key environmental factors implicated in inflammatory bowel disease. Figure created with BioRender.

### 5.2.2. Exposure to drugs and prior surgery

Antibiotics are known to disrupt the intestinal microbiome and, as described, increase the risk of IBD development with exposure in early life, particularly in the prenatal period and first year of infancy.<sup>96</sup> This association decreases, however, with increasing childhood age of exposure through to adolescence.<sup>103</sup> For adults, antibiotic exposure was also shown to increase the risk of IBD across all ages in a recent population-based cohort study with more than 87 million person-years of follow-up.<sup>81</sup> The highest risk of developing IBD occurred in patients aged 40–60 years (incidence rate ratio [IRR] 1.48, 95% CI 1.4–1.54). The risk was particularly magnified within the first 2 years of antibiotic exposure and after use of antibiotic classes often prescribed to treat gastrointestinal pathogens, such as nitroimidazoles and fluoroquinolones.<sup>81</sup>

Other drugs frequently implicated in causing IBD include non-steroidal anti-inflammatory drugs [NSAIDs], the combined oral contraceptive pill [OCP], and hormone medical therapy. Previously, there had been mixed reports of the association of isotretinoin and IBD but a recent meta-analysis including >2.5 million participants showed no evidence of increased odds of developing UC or CD.<sup>104</sup> The PURE study by Narula *et al.* was a prospective cohort study of 133 137 adults who were followed up for a median period of 11 years, which assessed the association between medication use and the risk of developing IBD.<sup>105</sup> Here, NSAIDs increased the odds of incident IBD (adjusted OR [aOR] 1.80, 95% CI 1.23–2.64), which was further increased by long-term use [aOR 5.58, 95% CI 2.26–13.80]. Increased odds of IBD in the PURE study were also seen with previous or current OCP

use [aOR 2.17, 95% CI 1.70–2.77] and with hormonal medication use [aOR 4.43, 95% CI 1.78–11.01].<sup>105</sup>

With regard to previous surgery, appendicectomy confers a protective effect for UC and reduces the risk of incident diagnosis by as much as 69% [95% CI 62–75%], especially in patients operated on at  $\leq 20$  years of age for acute appendicitis.<sup>106,107</sup> Results of appendicectomy as a treatment option in medically refractive UC are controversial and outcomes from randomized controlled trials are eagerly awaited.<sup>82,83,108,109</sup> Evidence for the link between prior tonsillectomy and CD is tenuous given mixed results, and outcomes are likely to have been confounded by the need for repeated antibiotic exposure.<sup>84,110</sup>

### 5.2.3. Diet

The pro-colitogenic effects of intestinal dysbiosis and the amelioration of the inflammatory burden by modulation with faecal microbiota transplantation are well established.<sup>80,86,111,112</sup> Unravelling the tight interrelation between diet and host microbiome-immune responses is key and the westernized diet-associated gut dysbiosis is thought to be one of the main environmental factors responsible for the pathogenesis of IBD. Pre-clinical models have shown the deleterious impact of additives and specific nutrients to trigger and perpetuate gut inflammation. Epidemiological studies have associated a number of dietary components with IBD. Despite this, no specific dietary regimen is advocated for preventing disease onset or relapse in national or international consensus guidelines.

To prevent IBD onset, reducing consumption of ultra-processed foods [UPFs] is likely to be beneficial. UPF includes additives to preserve or enhance a food product, for example artificial sweeteners or emulsifiers.<sup>87</sup> A meta-analysis by Narula *et al.* that included >1 million patients with >13 million years of person-years follow-up across five cohort studies published between 2020 and 2022 showed an increased CD risk [but not UC] for those with a higher UPF intake (hazard ratio [HR] 1.71, 95% CI 1.37–2.14).<sup>113</sup> In a large prospective population-based cohort study, western dietary patterns with low fruit and vegetable consumption, and high intake of snacks and pre-prepared meals showed an increased likelihood of incident CD [OR 1.16, 95% CI 1.03–1.30].<sup>114</sup> A pattern comprising red meat, poultry, and processed meat was associated with increased risk of UC [OR 1.11, 95% CI 1.01–1.20].<sup>114</sup> Other important dietary factors include: soft drink consumption, which increased the risk of UC (relative risk [RR] 1.69, 95% CI 1.24–2.30), and sucrose intake, which increased the risk of developing both UC [RR 1.10, 95% CI 1.02–1.18] and CD [RR 1.09, 95% CI 1.02–1.16].<sup>115,116</sup>

The adoption of the Mediterranean diet, which emphasizes plant-based foods, whole grains, and healthy fats, has been shown to reduce mortality from cardiovascular disease and cancer.<sup>117</sup> There is increasing interest and data to support the integration of this diet into IBD clinical practice.<sup>118</sup> Large-scale prospective studies have shown that adherence to the Mediterranean diet can reduce the risk of developing CD.<sup>119,120</sup> This is also applicable to studies observing the effect of various components of this diet. For example, a meta-analysis of 14 case-control studies showed that a higher consumption of fruit was inversely associated with the risk of developing UC [OR 0.69, 95% CI 0.49–0.96] and CD [OR 0.57, 95% CI 0.44–0.74], and a higher consumption of vegetables was associated with a reduced risk of UC [OR 0.71, 95% CI 0.58–0.88] but did not meet significance for CD.<sup>121</sup> A US-based prospective study showed that long-term fibre intake was associated with a 40% reduced risk of CD [OR 0.59, 95% CI 0.39–0.90] but not UC.<sup>122</sup>

#### 5.2.4. Environmental location, hygiene, and living conditions

Reduced exposure to antigenic stimuli can lead to reduced diversity and abundance of the intestinal microbiome with a greater proclivity to develop pro-inflammatory T-cell immune responses to later stimuli.<sup>123</sup> In an umbrella review of meta-analyses, Piovani *et al.* summarize the outcomes of several meta-analyses that examined the effect of urban–rural exposures on the development of IBD. In order of decreasing risk, urban living was found to be associated with CD [IRR 1.42, 95% CI 1.26–1.60], IBD [OR 1.35, 95% CI 1.15–1.58], and, to a lesser extent, UC [IRR 1.17, 95% CI 1.03–1.32].<sup>90</sup> In contrast, habitation in proximity to farm animals, having pets, and bed sharing were found to be protective against both CD and UC.<sup>90</sup>

#### 5.3. Older patients with IBD

Patients with older-onset IBD usually have a more benign and less progressive disease course, potentially representing a distinct sub-type within the IBD spectrum.<sup>91,124,125</sup> Age-related physiological changes in the gastrointestinal tract, alongside gut dysbiosis in terms of reduced diversity and abundance, alterations in lifestyle, dietary intake, and reduced functionality

of the host immune system could lead to the development of IBD.<sup>126,127</sup>

Assessments of the impact of environmental exposure on older IBD patients are limited compared to other age groups given the incidence and prevalence in this age group has only dramatically increased in the past decade. Detailed study is also hindered by the effects of polypharmacy and multiple comorbidities that afflict this age group, including impairment to both mobility and cognition. Nonetheless, exposure to antibiotics to treat enteric bacteria in those aged  $\geq 60$  years has been shown to increase the risk of developing IBD [IRR 1.47, 95% CI 1.42–1.53].<sup>81</sup> In terms of protective factors, two prospective studies showed that adopting and adhering to a Mediterranean diet was associated with a significantly lower risk of older-onset CD [HR 0.42, 95% CI 0.22–0.80] but not UC.<sup>119</sup>

## 6. Factors affecting the disease course of IBD

Data on exposures and the possible impact on the subsequent course of IBD are far more limited. Here, studies have been conducted in adults and therefore this section has not been further sub-stratified by age. The impact of disease relapse on patients and caregivers warrants the urgent need to pursue research strategies that delineate risk factors that negatively affect disease course.

### 6.1. Smoking

Tobacco smoking is perhaps the most well-studied environmental factor for IBD and is well known for its detrimental impact on CD and for developing a more severe phenotype.<sup>100,101</sup> Quite how tobacco smoking impacts disease pathogenesis and disease course remains unclear but proposed mechanisms include mucosal damage, impaired mucosal immune responses, comprised blood flow, and modulation of the composition of gut microbiota by reducing bacterial species diversity.<sup>94,128</sup> Smokers with established CD have an increased risk of disease relapse, need for hospitalization, and need for surgical intervention.<sup>93,129</sup> Patients who are able to adhere to smoking cessation for more than 12 months run a more benign disease course comparable to those who have never smoked.<sup>130</sup> Although patients with UC have a reduced risk of developing disease as described above, smoking status after diagnosis does not appear to affect disease course or clinical outcomes.<sup>77,78,100</sup>

Most studies were conducted prior to or at the beginning of the advanced therapy era. Therefore, while it is difficult to ascertain to what extent immunosuppressive therapy is able to negate the deleterious consequences of smoking, tobacco smoking should be strongly discouraged with cessation support offered to those who require it given the well-known systemic effects. Moving forwards, observing how the shifting global patterns of tobacco smoking affect IBD epidemiology, disease phenotype, and treatment responsiveness will be important. For e-cigarette use, there are limited data but evidence so far does not point towards worse outcomes for patients with IBD.<sup>131</sup>

### 6.2. Psychological factors

There is evidence that psychological factors can contribute to IBD symptom flares. A prospective population-based study of 704 adults assessing triggers of symptomatic flares in IBD identified high perceived stress, low mood, and major

life events as trigger variables significantly associated with flares.<sup>132</sup> These findings were corroborated by another prospective study that identified perceived stress and avoidance coping as predictors of earlier relapse.<sup>133</sup> Sleep disturbance may also be implicated in disease flares. Ananthakrishnan *et al.* conducted a systematic review and found that among 1291 patients with CD, poor sleep had a 2-fold increase in risk of active disease at 6 months [aOR 2.0, 95% CI 1.45–2.76].<sup>134</sup> No increased risk of disease flare was seen with UC.

### 6.3. Medication

There is some evidence that medication can increase the risk of IBD flares. Lo *et al.* examined two nested case-control cohorts to explore associations between antibiotic types and IBD flare-ups, defined by steroid use and hospitalization episodes. The study found a significantly increased risk of disease relapse with exposure to quinolones [OR 3.0–3.8], antifungals [OR 1.5–2.3], agents against amoebiasis and protozoal infections [OR 2.0–3.2], intestinal anti-infectives [OR 2.1–2.3], and beta-lactam antibiotics [OR 1.4].<sup>135</sup> Data regarding NSAID use and disease relapse are mixed. Long *et al.* prospectively showed that regular NSAID use was associated with active CD but not UC, although it is difficult to determine if this is due to NSAIDs increasing CD activity or if NSAID use was a marker of sub-optimally controlled disease, i.e. NSAIDs being taken for pain due to active disease.<sup>136</sup> A previous systematic review showed no association between NSAID use and risk of UC or CD exacerbation.<sup>137</sup>

### 6.4. Diet

As well as reducing the risk of CD, the Mediterranean diet may also improve disease course in those with an existing diagnosis of IBD. Studies have shown inverse associations with disease activity and adherence.<sup>85,138–142</sup> Many of the suppositions of the impact of diet and IBD, but not all, have derived from observational studies. Establishing causality with dietary exposures poses unique challenges, which include difficulty quantifying intake and the confounding effect of other environmental factors and behaviours.<sup>143</sup> There is a need for robustly designed large-scale nutritional trials, akin to IBD drug trials, to disentangle disease variation and to accurately assess efficacy of nutritional therapy in adults with IBD. This is essential to address the current limitations of dietary intervention studies.<sup>87</sup>

It is important to recognize the widespread heterogeneity of all studies assessing environmental associations with IBD and that correlation does not equate to causation. Further, the mechanistic reasons behind the associations remain poorly understood. This highlights the need for further carefully designed and high-quality prospective studies to further explore causality and the effect of risk modification to achieve optimal patient outcomes.

## 7. Exposome-based intervention

Optimal study of environmental triggers in IBD requires a means of quantitatively measuring the frequency, duration, and extent of exposures within the critical window of vulnerability in carefully defined cohorts.<sup>144</sup> This involves identifying the signatures of exposure, namely measurable indicators of biological response to environmental factors, and how they relate to changes in biomarkers of disease onset, disease progression and response to therapy, which also need to be identified and qualified.<sup>144</sup>

Increased evidence supports the concept of a preclinical phase in IBD, which precedes clinical diagnosis, during which immune and inflammatory pathways are already altered.<sup>145,146</sup> Primary prevention is defined as prevention of disease development. Targeting the early pathogenic events that promote the development of IBD could prevent or attenuate disease onset and offer a true opportunity for disease modification.<sup>145</sup> One approach to the primary prevention of chronic diseases is via modification of lifestyle and dietary factors. Recently, in a prospective study across six US and European cohorts, a substantial burden of IBD risk may have been prevented through lifestyle modification.<sup>120</sup> The authors constructed modifiable risk scores based on established modifiable risk factors, including body mass index [BMI], smoking status, NSAID use, physical activity, and diet, which explored daily consumption of fruit and vegetables, fibre, n3:n6 polyunsaturated fatty acids [PUFAs], and red meat.<sup>120</sup> The authors highlight that adherence to low-risk factors may have prevented 42.9% of CD and 44.4% of UC cases.<sup>120</sup> Similarly, adherence to a healthy lifestyle may have prevented 61.1% of CD and 42.2% of UC cases.<sup>120</sup> Further prospective interventional studies are needed to determine whether lifestyle modification is effective for the primary prevention of IBD, particularly in high-risk populations and those with younger-onset disease.

Despite advances in the treatment of chronic IBD, induction and maintenance of remission are still difficult to achieve in a substantial proportion of patients. In this context, a growing number of patients choose alternative or complementary approaches to better control their symptoms. Recently, a group of international experts from the International Organization for the Study of Inflammatory Bowel Diseases voted on a series of consensus statements to inform the management of environmental and lifestyle factors in IBD.<sup>147</sup> The recommendations include avoiding traditional cigarette smoking in patients with CD or UC, screening for symptoms of depression, anxiety, and psychosocial stressors at diagnosis and during flares [with referral to mental health professionals when appropriate], and encouraging regular physical activity as tolerated as secondary prevention.<sup>147</sup> Patients using dietary approaches for treatment of their IBD should be encouraged to adopt diets that are best supported by evidence and involve monitoring for the objective resolution of inflammation.<sup>147</sup>

Studies have evaluated the impact of smoking cessation on the course of IBD. Cosnes *et al.* evaluated the benefit of smoking cessation in patients with CD.<sup>130</sup> Repeated counseling to stop smoking, with easy access to a smoking cessation programme, was given to 474 consecutive smokers with CD. Patients who stopped smoking for more than 1 year [quitters] were included in a prospective follow-up study, which compared disease course and therapeutic needs with two control groups, continuing smokers and non-smokers. During a median follow-up of 29 months [1–54 months], the risk of a flare-up in quitters did not differ from that in non-smokers and was lower than in continuing smokers. Need for steroids and for introduction or reinforcement of immunosuppressive therapy, respectively, were similar in quitters and non-smokers and increased in continuing smokers. The risk of surgery was not significantly different in the three groups. In a systematic review, smoking cessation was associated with a 65% reduction in the risk of a relapse as compared with continued smokers in CD.<sup>148</sup> Using nicotine replacement therapy and bupropion, there was an improved chance of success of up to 10%.<sup>148</sup>

Concerning diet, a randomized controlled trial compared exclusive enteral nutrition [EEN] with the CD exclusion diet [CDED], a whole-food diet coupled with partial enteral nutrition [PEN], designed to reduce exposure to dietary components that have adverse effects on the microbiome and intestinal barrier in children with mild to moderate CD.<sup>79</sup> CDED plus PEN was better tolerated than EEN in children with mild to moderate CD. Both diets were effective in inducing remission by week 6. The combination of CDED plus PEN induced sustained remission in a significantly higher proportion of patients than EEN. CDED was also assessed in adults with CD.<sup>88</sup> CDED with or without PEN was effective for induction and maintenance of remission in adults with mild-to-moderate biologic-naïve CD.

Most data on the benefits of the complementary approaches are based on observational studies. Clinical trials are needed to evaluate the impact of holistic medicine on the IBD disease course, potentially in combination with drug treatments. Inconsistent efficacies of complementary and alternative medicines in turn could be related to variation in formulations between different brands/producers due to less stringent regulatory aspects as compared with medically approved therapies.<sup>89</sup> In addition, negative publication bias is a prevalent issue in the field of complementary and alternative approaches and can be addressed only by larger systemic changes to the academic ecosystem.<sup>89</sup> Fortunately, a multitude of controlled and uncontrolled trials are currently being performed and will aim to investigate the role of physical activity and dietary therapies in potentially improving quality of life, physical fitness, controlling inflammation, disease prevention, and progression.<sup>89</sup> For example, physical activity and exercise have been suggested to be elements in both the prevention and supplementary treatment of IBD; however, this is based on limited underpowered trials.<sup>92</sup> The IBD-FITT study is an open-label randomized clinical trial investigating the effect of a 12-week exercise intervention in adult patients with moderately active IBD on disease-specific health-related quality of life, disease activity by clinical scoring systems, and biomarkers.<sup>92</sup> This study will include 150 patients allocated to intervention and usual care.<sup>92</sup> The intervention will be based on a 12-week aerobic exercise programme and will include two supervised exercise sessions of 60 min per week, combined with one weekly home training session.<sup>92</sup> These trials may provide a new patient-active disease management approach.

## 8. Conclusion

The effect of exposure to multiple environmental factors could explain the worldwide increase in IBD incidence across the ages. It is expected that in 2030 the prevalence of IBD, CD, and UC will be significantly increasing with some of the highest rates of increase seen within the paediatric and the elderly populations.<sup>60</sup> Studies that seek to elucidate host-environment interactions in IBD and the precise effect of environmental exposures on the pathogenesis and subsequent disease course while considering the background genetic susceptibility remain high on the research priority agenda. The rapidly increasing incidence outside the Western world means that this research should reflect the diversity of ethnicities and geographical populations to better understand disease development in these communities. Longitudinal data obtained from IBD patients prior to or just after a diagnosis and before and after environmental exposure[s] are invaluable.

Optimally studying and targeting environmental triggers in IBD may offer future opportunities for disease modification and, ultimately, prevention studies.

## Funding

This paper was published as part of a supplement supported by an independent education grant from Pfizer.

## Conflict of Interest

BC has received lecture and/or consulting fees from Abbvie, Amgen, Celltrion, Ferring, Galapagos, Janssen, Lilly, Pfizer, and Takeda. SH has received speaker, consultant, and advisory board member fees and/or has received travel grants from Pfizer, Janssen, AbbVie, Takeda, Ferring, Lilly, Galapagos, and Pharmacosmos.

LPB reports consulting fees from Abbvie, Abivax, Adacyte, Alimentiv, Amgen, Applied Molecular Transport, Arena, Banook, Biogen, BMS, Celltrion, Connect Biopharm, Cytoki Pharma, Entera, Ferring, Fresenius Kabi, Galapagos, Genentech, Gilead, Gossamer Bio, GSK, IAC Image Analysis, Index Pharmaceuticals, Inotrem, Janssen, Lilly, Medac, Mopac, Morphic, MSD, Nordic Pharma, Novartis, Oncodesign Precision Medicine, ONO Pharma, OSE Immunotherapeutics, Pandion Therapeutics, Par' Immune, Pfizer, Prometheus, Protagonist, Roche, Samsung, Sandoz, Sanofi, Satisfay, Takeda, Telavant, Theravance, Thermo Fischer, Tigenix, Tillots, Viatrix, Vectivbio, Ventyx, Ysopia. Grant support from Celltrion, Fresenius Kabi, Medac, MSD, Takeda. Lecture fees from Abbvie, Alfasigma, Amgen, Arena, Biogen, Celltrion, Ferring, Galapagos, Genentech, Gilead, Janssen, Lilly, Kern Pharma, Medac, MSD, Nordic Pharma, Pfizer, Sandoz, Takeda, Tillots, Viatrix. Support travel from Abbvie, Alfasigma, Amgen, Celltrion, Connect Biopharm, Ferring, Galapagos, Genentech, Gilead, Gossamer Bio, Janssen, Lilly, Medac, Morphic, MSD, Pfizer, Sandoz, Takeda, Thermo Fischer, Tillots.

## Author Contributions

BC and SH wrote the article and created figures and tables. LPB supervised the project. All the authors critically reviewed the manuscript content, and the final manuscript was approved by all the authors.

## Data Availability

The data underlying this article are available in the article.

## Supplementary Data

Supplementary data are available online at *ECCO-JCC* online.

## References

1. Agrawal M, Jess T. Implications of the changing epidemiology of inflammatory bowel disease in a changing world. *United European Gastroenterol J* 2022;10:1113–20. doi:10.1002/ueg2.12317
2. Holst J. Global Health – emergence, hegemonic trends and biomedical reductionism. *Global Health* 2020;16:42. doi:10.1186/s12992-020-00573-4



3. Molodecky NA, Soon IS, Rabi DM, *et al.* Increasing incidence and prevalence of the inflammatory bowel diseases with time, based on systematic review. *Gastroenterology* 2012;142:46–54.e42; quiz e30. doi:10.1053/j.gastro.2011.10.001
4. Kaplan GG, Windsor JW. The four epidemiological stages in the global evolution of inflammatory bowel disease. *Nat Rev Gastroenterol Hepatol* 2021;18:56–66. doi:10.1038/s41575-020-00360-x
5. Kaplan GG, Ng SC. Understanding and preventing the global increase of inflammatory bowel disease. *Gastroenterology* 2017;152:313–21.e2. doi:10.1053/j.gastro.2016.10.020
6. Al Lawati TT, Al Rawahi Y, Al Bahlani AQ, Al Jamei A, Ramatalla D, Saadah OI. Incidence and clinical characteristics of pediatric inflammatory bowel disease in Oman. *Saudi J Gastroenterol* 2023;29:177–82. doi:10.4103/sjg.sjg\_473\_22
7. Alvisi P, Labriola F, Scarallo L, *et al*; SIGENP IBD Working Group. Epidemiological trends of pediatric IBD in Italy: a 10-year analysis of the Italian Society of Pediatric Gastroenterology, Hepatology and Nutrition Registry. *Dig Liver Dis* 2022;54:469–76. doi:10.1016/j.dld.2021.12.018
8. Srivastava A, Sathiyasekharan M, Jagadisan B, *et al.* Paediatric inflammatory bowel disease in India: a prospective multicentre study. *Eur J Gastroenterol Hepatol* 2020;32:1305–11. doi:10.1097/MEG.0000000000001859
9. Ivković L, Hojsak I, Trivić I, *et al.* Incidence and geographical variability of pediatric inflammatory bowel disease in Croatia: data from the Croatian National Registry for Children with Inflammatory Bowel Disease. *Clin Pediatr (Phila)* 2020;59:1182–90. doi:10.1177/0009922820941202
10. El Mouzan MI, AlEdreesi MH, Hasosah MY, Al-Hussaini AA, Al Sarkhy AA, Assiri AA. Regional variation of pediatric inflammatory bowel disease in Saudi Arabia: results from a multicenter study. *World J Gastroenterol* 2020;26:416–23. doi:10.3748/wjg.v26.i4.416
11. Kelsen JR, Conrad MA, Dawany N, *et al.* The unique disease course of children with very early onset-inflammatory bowel disease. *Inflamm Bowel Dis* 2020;26:909–18. doi:10.1093/ibd/izz214
12. Olén O, Askling J, Sachs MC, *et al.* Increased mortality of patients with childhood-onset inflammatory bowel diseases, compared with the general population. *Gastroenterology* 2019;156:614–22. doi:10.1053/j.gastro.2018.10.028
13. Ashton JJ, Cullen M, Afzal NA, Coelho T, Batra A, Beattie RM. Is the incidence of paediatric inflammatory bowel disease still increasing? *Arch Dis Child* 2018;103:1093–4. doi:10.1136/archdischild-2018-315038
14. Bequet E, Sarter H, Fumery M, *et al*; EPIMAD Group. Incidence and phenotype at diagnosis of very-early-onset compared with later-onset paediatric inflammatory bowel disease: a population-based study [1988–2011]. *J Crohns Colitis* 2017;11:519–26. doi:10.1093/ecco-jcc/jjw194
15. Schwarz J, Sýkora J, Cvalínová D, *et al.* Inflammatory bowel disease incidence in Czech children: a regional prospective study, 2000–2015. *World J Gastroenterol* 2017;23:4090–101. doi:10.3748/wjg.v23.i22.4090
16. Benchimol EI, Mack DR, Nguyen GC, *et al.* Incidence, outcomes, and health services burden of very early onset inflammatory bowel disease. *Gastroenterology* 2014;147:803–813.e7; quiz e14. doi:10.1053/j.gastro.2014.06.023
17. El Mouzan MI, Saadah O, Al-Saleem K, *et al.* Incidence of pediatric inflammatory bowel disease in Saudi Arabia: a multicenter national study. *Inflamm Bowel Dis* 2014;20:1085–90. doi:10.1097/MIB.000000000000048
18. Martín-de-Carpi J, Rodríguez A, Ramos E, Jiménez S, Martínez-Gómez MJ, Medina E; SPIRIT-IBD Working Group of Sociedad Española de Gastroenterología, Hepatología y Nutrición Pediátrica. Increasing incidence of pediatric inflammatory bowel disease in Spain (1996–2009): the SPIRIT Registry. *Inflamm Bowel Dis* 2013;19:73–80. doi:10.1002/ibd.22980
19. Hope B, Shahdadi R, Dunne C, *et al.* Rapid rise in incidence of Irish paediatric inflammatory bowel disease. *Arch Dis Child* 2012;97:590–4. doi:10.1136/archdischild-2011-300651
20. Al-Qabandi WA, Buhamrah EK, Hamadi KA, Al-Osaimi SA, Al-Ruwayeh AA, Madda J. Inflammatory bowel disease in children, an evolving problem in Kuwait. *Saudi J Gastroenterol* 2011;17:323–7. doi:10.4103/1319-3767.84487
21. Perminow G, Brackmann S, Lyckander LG, *et al*; IBSEN-II Group. A characterization in childhood inflammatory bowel disease, a new population-based inception cohort from South-Eastern Norway, 2005–07, showing increased incidence in Crohn's disease. *Scand J Gastroenterol* 2009;44:446–56. doi:10.1080/00365520802647434
22. Benchimol EI, Guttman A, Griffiths AM, *et al.* Increasing incidence of paediatric inflammatory bowel disease in Ontario, Canada: evidence from health administrative data. *Gut* 2009;58:1490–7. doi:10.1136/gut.2009.188383
23. Sáiz-Chumillas RM, Barrio J, Fernández-Salazar L, *et al.* Incidence, and natural history of inflammatory bowel disease in Castilla y León: prospective and multicenter epidemiological study. *Gastroenterol Hepatol* 2023;46:102–8. doi:10.1016/j.gastrohep.2022.04.002
24. Zagórowicz E, Walkiewicz D, Kucha P, *et al.* Nationwide data on epidemiology of inflammatory bowel disease in Poland between 2009 and 2020. *Pol Arch Intern Med* 2022;132:16194. doi:10.20452/pamw.16194
25. Misra R, Faiz O, Munkholm P, Burisch J, Arebi N. Epidemiology of inflammatory bowel disease in racial and ethnic migrant groups. *World J Gastroenterol* 2018;24:424–37. doi:10.3748/wjg.v24.i3.424
26. Macaluso FS, Mocchi G, Orlando A, *et al.* Prevalence and incidence of inflammatory bowel disease in two Italian islands, Sicily and Sardinia: a report based on health information systems. *Dig Liver Dis* 2019;51:1270–4. doi:10.1016/j.dld.2019.05.017
27. Despalatović BR, Bratanić A, Radić M, Jurišić Z, Tonkić A. Epidemiological trends of inflammatory bowel disease (IBD) in Split-Dalmatia County, Croatia from 2006 to 2014. *Eur J Intern Med* 2017;46:e17–9. doi:10.1016/j.ejim.2017.08.026
28. De Groof EJ, Rossen NGM, Van Rhijn BD, *et al.* Burden of disease and increasing prevalence of inflammatory bowel disease in a population-based cohort in the Netherlands. *Eur J Gastroenterol Hepatol* 2016;28:1065–72. doi:10.1097/MEG.0000000000000660
29. Jeuring SFG, van den Heuvel TRA, Zeegers MP, *et al.* Epidemiology and long-term outcome of inflammatory bowel disease diagnosed at elderly age – an increasing distinct entity? *Inflamm Bowel Dis* 2016;22:1425–34. doi:10.1097/MIB.0000000000000738
30. Lucendo AJ, Hervás D, Roncero O, *et al.* Epidemiology and temporal trends (2000–2012) of inflammatory bowel disease in adult patients in a central region of Spain. *Eur J Gastroenterol Hepatol* 2014;26:1399–407. doi:10.1097/MEG.0000000000000226
31. Di Domenicantonio R, Cappai G, Arcà M, *et al.* Occurrence of inflammatory bowel disease in central Italy: a study based on health information systems. *Dig Liver Dis* 2014;46:777–82. doi:10.1016/j.dld.2014.04.014
32. Ott C, Obermeier F, Thieler S, *et al.* The incidence of inflammatory bowel disease in a rural region of Southern Germany: a prospective population-based study. *Eur J Gastroenterol Hepatol* 2008;20:917–23. doi:10.1097/MEG.0b013e3282f97b33
33. Vind I, Riis L, Jess T, *et al*; DCCC study group. Increasing incidences of inflammatory bowel disease and decreasing surgery rates in Copenhagen City and County, 2003–2005: a population-based study from the Danish Crohn colitis database. *Am J Gastroenterol* 2006;101:1274–82. doi:10.1111/j.1572-0241.2006.00552.x
34. Sincić BM, Vucelić B, Persić M, *et al.* Incidence of inflammatory bowel disease in Primorsko-goranska County, Croatia, 2000–2004: a prospective population-based study. *Scand J Gastroenterol* 2006;41:437–44. doi:10.1080/00365520500320094
35. Ng SC, Kaplan GG, Tang W, *et al.* Population density and risk of inflammatory bowel disease: a prospective population-based study

- in 13 countries or regions in Asia-Pacific. *Am J Gastroenterol* 2019;114:107–15. doi:10.1038/s41395-018-0233-2
36. Kim HJ, Hann HJ, Hong SN, et al. Incidence and natural course of inflammatory bowel disease in Korea, 2006–2012: a nationwide population-based study. *Inflamm Bowel Dis* 2015;21:623–30. doi:10.1097/MIB.0000000000000313
  37. Ng SC, Tang W, Ching JY, et al; Asia-Pacific Crohn's and Colitis Epidemiologic Study (ACCESS) Study Group. Incidence and phenotype of inflammatory bowel disease based on results from the Asia-Pacific Crohn's and colitis epidemiology study. *Gastroenterology* 2013;145:158–65.e2. doi:10.1053/j.gastro.2013.04.007
  38. Shin DH, Sinn DH, Kim YH, et al. Increasing incidence of inflammatory bowel disease among young men in Korea between 2003 and 2008. *Dig Dis Sci* 2011;56:1154–9. doi:10.1007/s10620-010-1403-2
  39. Niriella MA, De Silva AP, Dayaratne AHGK, et al. Prevalence of inflammatory bowel disease in two districts of Sri Lanka: a hospital based survey. *BMC Gastroenterol* 2010;10:32. doi:10.1186/1471-230X-10-32
  40. Tozun N, Atug O, Imeryuz N, et al; Members of the Turkish IBD Study Group. Clinical characteristics of inflammatory bowel disease in Turkey: a multicenter epidemiologic survey. *J Clin Gastroenterol* 2009;43:51–7. doi:10.1097/MCG.0b013e3181574636
  41. Shapiro JM, Zoega H, Shah SA, et al. Incidence of Crohn's disease and ulcerative colitis in Rhode Island: report from the Ocean State Crohn's and Colitis Area Registry. *Inflamm Bowel Dis* 2016;22:1456–61. doi:10.1097/MIB.0000000000000745
  42. Benchimol EI, Mack DR, Guttman A, et al. Inflammatory bowel disease in immigrants to Canada and their children: a population-based cohort study. *Am J Gastroenterol* 2015;110:553–63. doi:10.1038/ajg.2015.52
  43. Flanagan A, Allsopp SM, O'Connor SA, et al. High incidence of inflammatory bowel disease in Northern Australia: a prospective community population-based Australian incidence study in the Mackay-Isaac-Whitsunday region. *Intern Med J* 2023;53:1602–9. doi:10.1111/imj.15941
  44. Bhatia R, Yeoh SW, Vaz K, et al. Inflammatory bowel disease incidence, prevalence and 12-month initial disease course in Tasmania, Australia. *Intern Med J* 2019;49:622–30. doi:10.1111/imj.14111
  45. Su HY, Gupta V, Day AS, Geary RB. Rising incidence of inflammatory bowel disease in Canterbury, New Zealand. *Inflamm Bowel Dis* 2016;22:2238–44. doi:10.1097/MIB.0000000000000829
  46. Balderramo D, Trakal J, Herrera Najum P, et al; Grupo Córdoba de Cooperación para el Manejo y Estudio de la Enfermedad Inflamatoria Intestinal (CEMEI Group). High ulcerative colitis and Crohn's disease ratio in a population-based registry from Córdoba, Argentina. *Dig Liver Dis* 2021;53:852–7. doi:10.1016/j.dld.2021.01.006
  47. Yamamoto-Furusho JK, Sarmiento-Aguilar A, Toledo-Mauriño JJ, et al; EPIMEX Study Group. Incidence and prevalence of inflammatory bowel disease in Mexico from a nationwide cohort study in a period of 15 years (2000–2017). *Medicine (Baltim)* 2019;98:e16291. doi:10.1097/MD.00000000000016291
  48. Buenavida G, Casañas A, Vásquez C, et al; National Inflammatory Bowel Disease Registry. Incidence of inflammatory bowel disease in five geographical areas of Uruguay in the biennial 2007–2008. *Acta Gastroenterol Latinoam* 2011;41:281–7.
  49. Jones GR, Lyons M, Plevris N, et al. IBD prevalence in Lothian, Scotland, derived by capture-recapture methodology. *Gut* 2019;68:1953–60. doi:10.1136/gutjnl-2019-318936
  50. Ye Y, Manne S, Treem WR, Bennett D. Prevalence of inflammatory bowel disease in pediatric and adult populations: recent estimates from large National Databases in the United States, 2007–2016. *Inflamm Bowel Dis* 2020;26:619–25. doi:10.1093/ibd/izz182
  51. Betteridge JD, Armbruster SP, Maydonovitch C, Veerappan GR. Inflammatory bowel disease prevalence by age, gender, race, and geographic location in the U.S. military health care population. *Inflamm Bowel Dis* 2013;19:1421–7. doi:10.1097/MIB.0b013e318281334d
  52. Kappelman MD, Rifas-Shiman SL, Kleinman K, et al. The prevalence and geographic distribution of Crohn's disease and ulcerative colitis in the United States. *Clin Gastroenterol Hepatol* 2007;5:1424–9. doi:10.1016/j.cgh.2007.07.012
  53. Vendrell R, Venegas HL, Pérez CM, Morell C, Roman RV, Torres EA. Differences in prevalence of inflammatory bowel disease in Puerto Rico between commercial and government-sponsored managed health care insured individuals. *Bol Asoc Med P R* 2013;105:15–9.
  54. Mak WY, Zhao M, Ng SC, Burisch J. The epidemiology of inflammatory bowel disease: East meets west. *J Gastroenterol Hepatol* 2020;35:380–9. doi:10.1111/jgh.14872
  55. Zhang ZM, Lin ZL, He BX, et al. Epidemiological analysis reveals a surge in inflammatory bowel disease among children and adolescents: a global, regional, and national perspective from 1990 to 2019 – insights from the China study. *J Glob Health* 2023;13:04174. doi:10.7189/jogh.13.04174
  56. Khan R, Kuenzig ME, Benchimol EI. Epidemiology of pediatric inflammatory bowel disease. *Gastroenterol Clin North Am* 2023;52:483–96. doi:10.1016/j.gtc.2023.05.001
  57. Vieujean S, Caron B, Jairath V, et al. Is it time to include older adults in inflammatory bowel disease trials? A call for action. *Lancet Healthy Longev* 2022;3:e356–66. doi:10.1016/S2666-7568(22)00060-5
  58. Burisch J, Pedersen N, Čuković-Čavka S, et al; EpiCom-group. East–West gradient in the incidence of inflammatory bowel disease in Europe: the ECCO-EpiCom inception cohort. *Gut* 2014;63:588–97. doi:10.1136/GUTJNL-2013-304636
  59. Kaplan GG, Ng SC. Globalisation of inflammatory bowel disease: perspectives from the evolution of inflammatory bowel disease in the UK and China. *Lancet Gastroenterol Hepatol* 2016;1:307–16. doi:10.1016/S2468-1253(16)30077-2
  60. Coward S, Clement F, Benchimol EI, et al. Past and future burden of inflammatory bowel diseases based on modeling of population-based data. *Gastroenterology* 2019;156:1345–53.e4. doi:10.1053/j.gastro.2019.01.002
  61. Gower-Rousseau C, Vasseur F, Fumery M, et al. Epidemiology of inflammatory bowel diseases: new insights from a French population-based registry (EPIMAD). *Dig Liver Dis* 2013;45:89–94. doi:10.1016/j.dld.2012.09.005
  62. Jeuring SFG, van den Heuvel TRA, Zeegers MP, et al. Epidemiology and long-term outcome of inflammatory bowel disease diagnosed at elderly age—an increasing distinct entity? *Inflamm Bowel Dis* 2016;22:1425–34. doi:10.1097/MIB.0000000000000738
  63. Nguyen GC, Sheng L, Benchimol EI. Health care utilization in elderly onset inflammatory bowel disease: a population-based study. *Inflamm Bowel Dis* 2015;21:777–82. doi:10.1097/MIB.0000000000000306
  64. Travis S. Is IBD different in the elderly? *Inflamm Bowel Dis* 2008;14:S12–3. doi:10.1002/ibd.20605
  65. Bernstein CN, Wajda A, Svenson LW, et al. The epidemiology of inflammatory bowel disease in Canada: a population-based study. *Am J Gastroenterol* 2006;101:1559–68. doi:10.1111/j.1572-0241.2006.00603.x
  66. Buie MJ, Quan J, Windsor JW, et al; Global IBD Visualization of Epidemiology Studies in the 21st Century (GIVES-21) Research Group. Global hospitalization trends for Crohn's disease and ulcerative colitis in the 21st century: a systematic review with temporal analyses. *Clin Gastroenterol Hepatol* 2023;21:2211–21. doi:10.1016/j.cgh.2022.06.030
  67. Ananthakrishnan AN. The exposome in inflammatory bowel disease. *Trop Gastroenterol* 2014;35:135–40. doi:10.7869/tg.200
  68. Gordon H, Trier Moller F, Andersen V, Harbord M. Heritability in inflammatory bowel disease: from the first twin study to genome-wide association studies. *Inflamm Bowel Dis* 2015;21:1428–34. doi:10.1097/MIB.0000000000000393
  69. Jostins L, Ripke S, Weersma RK, et al; International IBD Genetics Consortium (IBDGC). Host–microbe interactions have shaped

- the genetic architecture of inflammatory bowel disease. *Nature* 2012;491:119–24. doi:10.1038/nature11582
70. Liu JZ, van Sommeren S, Huang H, *et al*; International Multiple Sclerosis Genetics Consortium. Association analyses identify 38 susceptibility loci for inflammatory bowel disease and highlight shared genetic risk across populations. *Nat Genet* 2015;47:979–86. doi:10.1038/ng.3359
  71. Fachal L; O.B.O. the International IBD Genetics Consortium. OP11 Expanded genome-wide association study of inflammatory bowel disease identifies 174 novel loci and directly implicates new genes in disease susceptibility. *J Crohns Colitis* 2022;16:i011–3.
  72. Sazonovs A, Stevens CR, Venkataraman GR, *et al*; Belgium IBD Consortium. Large-scale sequencing identifies multiple genes and rare variants associated with Crohn's disease susceptibility. *Nat Genet* 2022;54:1275–83. doi:10.1038/s41588-022-01156-2
  73. Ng SC, Bernstein CN, Vatn MH, *et al*; Epidemiology and Natural History Task Force of the International Organization of Inflammatory Bowel Disease (IOIBD). Geographical variability and environmental risk factors in inflammatory bowel disease. *Gut* 2013;62:630–49. doi:10.1136/gutjnl-2012-303661
  74. Lovasz BD, Golovics PA, Vegh Z, Lakatos PL. New trends in inflammatory bowel disease epidemiology and disease course in Eastern Europe. *Dig Liver Dis* 2013;45:269–76. doi:10.1016/j.dld.2012.08.020
  75. Wild CP. Complementing the genome with an 'exposome': the outstanding challenge of environmental exposure measurement in molecular epidemiology. *Cancer Epidemiol Biomarkers Prev* 2005;14:1847–50. doi:10.1158/1055-9965.EPI-05-0456
  76. Guo A, Ludvigsson J, Brantsæter AL, *et al*. Early-life diet and risk of inflammatory bowel disease: a pooled study in two Scandinavian birth cohorts. *Gut* 2024;73:590–600. doi:10.1136/gutjnl-2023-330971
  77. To N, Ford AC, Gracie DJ. Systematic review with meta-analysis: the effect of tobacco smoking on the natural history of ulcerative colitis. *Aliment Pharmacol Ther* 2016;44:117–26. doi:10.1111/apt.13663
  78. Blackwell J, Saxena S, Alexakis C, *et al*. The impact of smoking and smoking cessation on disease outcomes in ulcerative colitis: a nationwide population-based study. *Aliment Pharmacol Ther* 2019;50:556–67. doi:10.1111/apt.15390
  79. Levine A, Wine E, Assa A, *et al*. Crohn's disease exclusion diet plus partial enteral nutrition induces sustained remission in a randomized controlled trial. *Gastroenterology* 2019;157:440–50. e8. doi:10.1053/j.gastro.2019.04.021
  80. Sokol H, Landman C, Seksik P, *et al*; Saint-Antoine IBD Network. Fecal microbiota transplantation to maintain remission in Crohn's disease: a pilot randomized controlled study. *Microbiome* 2020;8:12. doi:10.1186/s40168-020-0792-5
  81. Faye AS, Allin KH, Iversen AT, *et al*. Antibiotic use as a risk factor for inflammatory bowel disease across the ages: a population-based cohort study. *Gut* 2023;72:663–70. doi:10.1136/gutjnl-2022-327845
  82. Sahami S, Wildenberg ME, Koens L, *et al*. Appendectomy for therapy-refractory ulcerative colitis results in pathological improvement of colonic inflammation: short-term results of the PASSION study. *J Crohns Colitis* 2019;13:165–71. doi:10.1093/ecco-jcc/jjy127
  83. Stellingwerf ME, Sahami S, Winter DC, *et al*. Prospective cohort study of appendectomy for treatment of therapy-refractory ulcerative colitis. *Br J Surg* 2019;106:1697–704. doi:10.1002/bjs.11259
  84. Xiong HF, Wang B, Zhao ZH, *et al*. Tonsillectomy and inflammatory bowel disease: a meta-analysis. *Colorectal Dis* 2016;18:O145–53. doi:10.1111/codi.13323
  85. El Amrousy D, Elashry H, Salamah A, Maher S, Abd-Elsalam SM, Hasan S. Adherence to the Mediterranean diet improved clinical scores and inflammatory markers in children with active inflammatory bowel disease: a randomized trial. *J Inflamm Res* 2022;15:2075–86. doi:10.2147/JIR.S349502
  86. Paramsothy S, Paramsothy R, Rubin DT, *et al*. Faecal microbiota transplantation for inflammatory bowel disease: a systematic review and meta-analysis. *J Crohns Colitis* 2017;11:1180–99. doi:10.1093/ecco-jcc/jjx063
  87. Adolph TE, Zhang J. Diet fuelling inflammatory bowel diseases: pre-clinical and clinical concepts. *Gut* 2022;71:2574–86. doi:10.1136/gutjnl-2021-326575
  88. Yanai H, Levine A, Hirsch A, *et al*. The Crohn's disease exclusion diet for induction and maintenance of remission in adults with mild-to-moderate Crohn's disease (CDED-AD): an open-label, pilot, randomised trial. *Lancet Gastroenterol Hepatol* 2022;7:49–59. doi:10.1016/S2468-1253(21)00299-5
  89. Sudhakar P, Wellens J, Verstockt B, Ferrante M, Sabino J, Vermeire S. Holistic healthcare in inflammatory bowel disease: time for patient-centric approaches? *Gut* 2023;72:192–204. doi:10.1136/gutjnl-2022-328221
  90. Piovani D, Danese S, Peyrin-Biroulet L, Nikolopoulos GK, Lytras T, Bonovas S. Environmental risk factors for inflammatory bowel diseases: an umbrella review of meta-analyses. *Gastroenterology* 2019;157:647–59. e4. doi:10.1053/j.gastro.2019.04.016
  91. Charpentier C, Salleron J, Savoye G, *et al*. Natural history of elderly-onset inflammatory bowel disease: a population-based cohort study. *Gut* 2014;63:423–32. doi:10.1136/gutjnl-2012-303864
  92. Lund K, Knudsen T, Kjeldsen J, Nielsen RG, Juhl CB, Nørgård BM. The IBD-FITT study – moderate-intensity exercise for patients with inflammatory bowel disease with moderate disease activity: an open-label randomized controlled trial. *Trials* 2023;24:742. doi:10.1186/s13063-023-07781-4
  93. Karczewski J, Poniedziałek B, Rzymiski P, Rychlewska-Hańczewska A, Adamski Z, Wiktorowicz K. The effect of cigarette smoking on the clinical course of inflammatory bowel disease. *Prz Gastroenterol* 2014;9:153–9. doi:10.5114/pg.2014.43577
  94. Berkowitz L, Schultz BM, Salazar GA, *et al*. Impact of cigarette smoking on the gastrointestinal tract inflammation: opposing effects in Crohn's disease and ulcerative colitis. *Front Immunol* 2018;9:1–10. doi:https://www.frontiersin.org/articles/10.3389/fimmu.2018.00074 Accessed February 4, 2024.
  95. Gluckman PD, Hanson MA, Cooper C, Thornburg KL. Effect of in utero and early-life conditions on adult health and disease. *N Engl J Med* 2008;359:61–73. doi:10.1056/NEJMra0708473
  96. Agrawal M, Sabino J, Frias-Gomes C, *et al*. Early life exposures and the risk of inflammatory bowel disease: systematic review and meta-analyses. *eClinicalMedicine* 2021;36:100884. doi:10.1016/j.eclinm.2021.100884
  97. Gomez de Agüero M, Ganal-Vonarburg SC, Fuhrer T, *et al*. The maternal microbiota drives early postnatal innate immune development. *Science* 2016;351:1296–302. doi:10.1126/science.aad2571
  98. Klement E, Cohen RV, Boxman J, Joseph A, Reif S. Breastfeeding and risk of inflammatory bowel disease: a systematic review with meta-analysis. *Am J Clin Nutr* 2004;80:1342–52. doi:10.1093/ajcn/80.5.1342
  99. Xu L, Lochhead P, Ko Y, Claggett B, Leong RW, Ananthakrishnan AN. Systematic review with meta-analysis: breastfeeding and the risk of Crohn's disease and ulcerative colitis. *Aliment Pharmacol Ther* 2017;46:780–9. doi:10.1111/apt.14291
  100. Mahid SS, Minor KS, Soto RE, Hornung CA, Galandiuk S. Smoking and inflammatory bowel disease: a meta-analysis. *Mayo Clin Proc* 2006;81:1462–71. doi:10.4065/81.11.1462
  101. Cosnes J, Carbonnel F, Beaugerie L, Le Quintrec Y, Gendre JP. Effects of cigarette smoking on the long-term course of Crohn's disease. *Gastroenterology* 1996;110:424–31. doi:10.1053/gast.1996.v110.pm8566589
  102. Pedersen KM, Çolak Y, Vedel-Krogh S, Kobylecki CJ, Bojesen SE, Nordestgaard BG. Risk of ulcerative colitis and Crohn's disease in smokers lacks causal evidence. *Eur J Epidemiol* 2022;37:735–45. doi:10.1007/s10654-021-00763-3
  103. Kronman MP, Zaoutis TE, Haynes K, Feng R, Coffin SE. Antibiotic exposure and IBD development among children: a population-based cohort study. *Pediatrics* 2012;130:e794–803. doi:10.1542/peds.2011-3886



104. Yu CL, Chou PY, Liang CS, et al. Isotretinoin exposure and risk of inflammatory bowel disease: a systematic review with meta-analysis and trial sequential analysis. *Am J Clin Dermatol* 2023;24:721–30. doi:10.1007/s40257-023-00765-9
105. Narula N, Wong ECL, Pray C, et al. Associations of antibiotics, hormonal therapies, oral contraceptives, and long-term NSAIDs with inflammatory bowel disease: results from the Prospective Urban Rural Epidemiology (PURE) Study. *Clin Gastroenterol Hepatol* 2022;21:2649–59.e16. doi:10.1016/j.cgh.2022.11.037
106. Andersson RE, Olaison G, Tysk C, Ekblom A. Appendectomy and protection against ulcerative colitis. *N Engl J Med* 2001;344:808–14. doi:10.1056/NEJM200103153441104
107. Koutroubakis IE, Vlachonikolis IG. Appendectomy and the development of ulcerative colitis: results of a metaanalysis of published case-control studies. *Am J Gastroenterol* 2000;95:171–6. doi:10.1016/S0002-9270(99)00739-X
108. Parian A, Limketkai B, Koh J, et al. Appendectomy does not decrease the risk of future colectomy in UC: results from a large cohort and meta-analysis. *Gut* 2017;66:1390–7. doi:10.1136/gutjnl-2016-311550
109. Gardenbroek TJ, Pinkney TD, Sahami S, et al. The ACCURE-trial: the effect of appendectomy on the clinical course of ulcerative colitis, a randomised international multicenter trial (NTR2883) and the ACCURE-UK trial: a randomised external pilot trial (ISRCTN56523019). *BMC Surg* 2015;15:30. doi:10.1186/s12893-015-0017-1
110. Sun W, Han X, Wu S, Yang C. Tonsillectomy and the risk of inflammatory bowel disease: a systematic review and meta-analysis. *J Gastroenterol Hepatol* 2016;31:1085–94. doi:10.1111/jgh.13273
111. Britton GJ, Contijoch EJ, Mogno I, et al. Microbiotas from humans with inflammatory bowel disease alter the balance of gut Th17 and RORγt+ regulatory T cells and exacerbate colitis in mice. *Immunity* 2019;50:212–24.e4. doi:10.1016/j.immuni.2018.12.015
112. Paramsothy S, Kamm MA, Kaakoush NO, et al. Multidonor intensive faecal microbiota transplantation for active ulcerative colitis: a randomised placebo-controlled trial. *Lancet* 2017;389:1218–28. doi:10.1016/S0140-6736(17)30182-4
113. Narula N, Chang NH, Mohammad D, et al. Food processing and risk of inflammatory bowel disease: a systematic review and meta-analysis. *Clin Gastroenterol Hepatol* 2023;21:2483–95.e1. doi:10.1016/j.cgh.2023.01.012
114. Peters V, Bolte L, Schuttert EM, et al. Western and carnivorous dietary patterns are associated with greater likelihood of IBD development in a large prospective population-based cohort. *J Crohns Colitis* 2022;16:931–9. doi:10.1093/ecco-jcc/jjab219
115. Nie JY, Zhao Q. Beverage consumption and risk of ulcerative colitis. *Medicine* 2017;96:e9070. doi:10.1097/MD.00000000000009070
116. Zeng L, Hu S, Chen P, Wei W, Tan Y. Macronutrient intake and risk of Crohn's disease: systematic review and dose-response meta-analysis of epidemiological studies. *Nutrients* 2017;9:500. doi:10.3390/nu9050500
117. Sofi F, Cesari F, Abbate R, Gensini GF, Casini A. Adherence to Mediterranean diet and health status: meta-analysis. *BMJ* 2008;337:a1344. doi:10.1136/bmj.a1344
118. Godny L, Dotan I. Is the Mediterranean diet in inflammatory bowel diseases ready for prime time? *J. Can. Assoc. Gastroenterol.* 2024;7:97–103. doi:10.1093/jcag/gwad041
119. Khalili H, Håkansson N, Chan SS, et al. Adherence to a Mediterranean diet is associated with a lower risk of later-onset Crohn's disease: results from two large prospective cohort studies. *Gut* 2020;69:1637–44. doi:10.1136/gutjnl-2019-319505
120. Lopes EW, Chan SSM, Song M, et al; EPIC-IBD investigators. Lifestyle factors for the prevention of inflammatory bowel disease. *Gut* 2022. doi:10.1136/gutjnl-2022-328174
121. Li F, Liu X, Wang W, Zhang D. Consumption of vegetables and fruit and the risk of inflammatory bowel disease: a meta-analysis. *Eur J Gastroenterol Hepatol* 2015;27:623–30. doi:10.1097/MEG.0000000000000330
122. Ananthakrishnan AN, Khalili H, Konijeti GG, et al. A prospective study of long-term intake of dietary fiber and risk of Crohn's disease and ulcerative colitis. *Gastroenterology* 2013;145:970–7. doi:10.1053/j.gastro.2013.07.050
123. Kostic AD, Xavier RJ, Gevers D. The microbiome in inflammatory bowel disease: current status and the future ahead. *Gastroenterology* 2014;146:1489–99. doi:10.1053/j.gastro.2014.02.009
124. Lakatos PL, David G, Pandur T, et al. IBD in the elderly population: results from a population-based study in Western Hungary, 1977–2008. *J Crohns Colitis* 2011;5:5–13. doi:10.1016/j.crohns.2010.08.004
125. Ruel J, Ruane D, Mehandru S, Gower-Rousseau C, Colombel JF. IBD across the age spectrum: is it the same disease? *Nat Rev Gastroenterol Hepatol* 2014;11:88–98. doi:10.1038/nrgastro.2013.240
126. Biagi E, Candela M, Fairweather-Tait S, Franceschi C, Brigidi P. Aging of the human metaorganism: the microbial counterpart. *Age (Dordr)* 2012;34:247–67. doi:10.1007/s11357-011-9217-5
127. Taleban S, Colombel JF, Mohler MJ, Fain MJ. Inflammatory bowel disease and the elderly: a review. *J Crohns Colitis* 2015;9:507–15. doi:10.1093/ecco-jcc/jjv059
128. Antinozzi M, Giffi M, Sini N, et al. Cigarette smoking and human gut microbiota in healthy adults: a systematic review. *Biomedicines* 2022;10:510. doi:10.3390/biomedicines10020510
129. Cosnes J, Carbonnel F, Carrat F, Beaugerie L, Cattan S, Gendre J. Effects of current and former cigarette smoking on the clinical course of Crohn's disease. *Aliment Pharmacol Ther* 1999;13:1403–11. doi:10.1046/j.1365-2036.1999.00630.x
130. Cosnes J, Beaugerie L, Carbonnel F, Gendre JP. Smoking cessation and the course of Crohn's disease: an intervention study. *Gastroenterology* 2001;120:1093–9. doi:10.1053/gast.2001.23231
131. Sheehan GT, Twardus SW, Cagan A, Ananthakrishnan AN. E-cigarette use and disease outcomes in inflammatory bowel diseases: a case-control study. *Dig Dis Sci* 2023;68:208–13. doi:10.1007/s10620-022-07539-z
132. Bernstein CN, Singh S, Graff LA, Walker JR, Miller N, Cheang M. A prospective population-based study of triggers of symptomatic flares in IBD. *Am J Gastroenterol* 2010;105:1994–2002. doi:10.1038/ajg.2010.140
133. Bitton A, Dobkin PL, Edwardes MD, et al. Predicting relapse in Crohn's disease: a biopsychosocial model. *Gut* 2008;57:1386–92. doi:10.1136/gut.2007.134817
134. Ananthakrishnan AN, Long MD, Martin CF, Sandler RS, Kappelman MD. Sleep disturbance and risk of active disease in patients with Crohn's disease and ulcerative colitis. *Clin Gastroenterol Hepatol* 2013;11:965–71. doi:10.1016/j.cgh.2013.01.021
135. Lo B, Biederman L, Rogler G, et al. Specific antibiotics increases the risk of flare-ups in patients with inflammatory bowel disease – results from a Danish nationwide population-based nested case-control study. *J Crohns Colitis* 2024;jjae027. doi:10.1093/ecco-jcc/jjae027
136. Long MD, Kappelman MD, Martin CF, Chen W, Anton K, Sandler RS. Role of non-steroidal anti-inflammatory drugs in exacerbations of inflammatory bowel disease. *J Clin Gastroenterol* 2016;50:152–6. doi:10.1097/MCG.0000000000000421
137. Moninuola OO, Milligan W, Lochhead P, Khalili H. Systematic review with meta-analysis: association between acetaminophen and nonsteroidal anti-inflammatory drugs (NSAIDs) and risk of Crohn's disease and ulcerative colitis exacerbation. *Aliment Pharmacol Ther* 2018;47:1428–39. doi:10.1111/apt.14606
138. Chicco F, Magri S, Cingolani A, et al. Multidimensional impact of Mediterranean diet on IBD patients. *Inflamm Bowel Dis* 2021;27:1–9. doi:10.1093/ibd/izaa097
139. Strisciuglio C, Cenni S, Serra MR, et al. Effectiveness of Mediterranean diet's adherence in children with inflammatory bowel diseases. *Nutrients* 2020;12:3206. doi:10.3390/nu12103206
140. Godny L, Reshef L, Pfeffer-Gik T, et al. Adherence to the Mediterranean diet is associated with decreased fecal calprotectin in



- patients with ulcerative colitis after pouch surgery. *Eur J Nutr* 2020;59:3183–90. doi:10.1007/s00394-019-02158-3
141. Papada E, Amerikanou C, Forbes A, Kaliora AC. Adherence to Mediterranean diet in Crohn's disease. *Eur J Nutr* 2020;59:1115–21. doi:10.1007/s00394-019-01972-z
142. Haskey N, Estaki M, Ye J, *et al.* A Mediterranean diet pattern improves intestinal inflammation concomitant with reshaping of the bacteriome in ulcerative colitis: a randomised controlled trial. *J Crohns Colitis* 2023;17:1569–78. doi:10.1093/ecco-jcc/jjad073
143. Merino J, Tobias DK. The unique challenges of studying the genetics of diet and nutrition. *Nat Med* 2022;28:221–2. doi:10.1038/s41591-021-01626-w
144. Ho SM, Lewis JD, Mayer EA, *et al.* Challenges in IBD research: environmental triggers. *Inflamm Bowel Dis* 2019;25:S13–23. doi:10.1093/ibd/izz076
145. Torres J, Ungaro RC, Colombel JF. Is prevention the best way to modify inflammatory bowel disease? How close are we? *Gastroenterology* 2022;162:1452–5. doi:10.1053/j.gastro.2021.07.051
146. Torres J, Halfvarson J, Rodríguez-Lago I, *et al.* Results of the Seventh Scientific Workshop of ECCO: precision medicine in IBD—prediction and prevention of inflammatory bowel disease. *J Crohns Colitis* 2021;15:1443–54. doi:10.1093/ecco-jcc/jjab048
147. Ananthakrishnan AN, Kaplan GG, Bernstein CN, *et al.*; International Organization for Study of Inflammatory Bowel Diseases. Lifestyle, behaviour, and environmental modification for the management of patients with inflammatory bowel diseases: an International Organization for Study of Inflammatory Bowel Diseases consensus. *Lancet Gastroenterol Hepatol* 2022;7:666–78. doi:10.1016/S2468-1253(22)00021-8
148. Johnson GJ, Cosnes J, Mansfield JC. Review article: smoking cessation as primary therapy to modify the course of Crohn's disease. *Aliment Pharmacol Ther* 2005;21:921–31. doi:10.1111/j.1365-2036.2005.02424.x