

Original Article  
Medical Informatics



# Sodium-Glucose Cotransporter-2 Inhibitor-Related Diabetic Ketoacidosis: Accuracy Verification of Operational Definition

Dong Yoon Kang ,<sup>1\*</sup> Hyunah Kim ,<sup>2\*</sup> SooJeong Ko ,<sup>3</sup> HyungMin Kim ,<sup>3</sup> Jiwon Shinn ,<sup>3</sup> Min-Gyu Kang ,<sup>4</sup> Sun-ju Byeon ,<sup>5</sup> Jeong-Hee Choi ,<sup>6</sup> Soo-Yong Shin ,<sup>7</sup> and Hun-Sung Kim <sup>3,8</sup>

OPEN ACCESS

**Received:** Sep 9, 2021  
**Accepted:** Jan 5, 2022  
**Published online:** Feb 8, 2022

**Address for Correspondence:**

**Hun-Sung Kim, MD, PhD**  
Department of Medical Informatics, College of Medicine, The Catholic University of Korea, 222 Banpo-daero, Seocho-gu, Seoul 06591, Korea.  
Email: 01cadiz@hanmail.net

\*Dong Yoon Kang and Hyunah Kim are co-first authors, with each contributing equally to this manuscript.

© 2022 The Korean Academy of Medical Sciences.

This is an Open Access article distributed under the terms of the Creative Commons Attribution Non-Commercial License (<https://creativecommons.org/licenses/by-nc/4.0/>) which permits unrestricted non-commercial use, distribution, and reproduction in any medium, provided the original work is properly cited.

**ORCID iDs**

Dong Yoon Kang   
<https://orcid.org/0000-0003-4283-2633>  
Hyunah Kim   
<https://orcid.org/0000-0002-5533-2040>  
SooJeong Ko   
<https://orcid.org/0000-0002-6550-9188>  
HyungMin Kim   
<https://orcid.org/0000-0003-2824-0535>  
Jiwon Shinn   
<https://orcid.org/0000-0002-9131-6128>  
Min-Gyu Kang   
<https://orcid.org/0000-0002-3239-4492>  
Sun-ju Byeon   
<https://orcid.org/0000-0002-9599-4970>

<https://jkms.org>

<sup>1</sup>Drug Safety Monitoring Center, Seoul National University Hospital, Seoul, Korea  
<sup>2</sup>College of Pharmacy, Sookmyung Women's University, Seoul, Korea  
<sup>3</sup>Department of Medical Informatics, College of Medicine, The Catholic University of Korea, Seoul, Korea  
<sup>4</sup>Division of Allergy and Clinical Immunology, Department of Internal Medicine, Chungbuk National University Hospital, Chungbuk National College of Medicine, Cheongju, Korea  
<sup>5</sup>Department of Pathology, Hallym University Dongtan Sacred Heart Hospital, Hwaseong, Korea  
<sup>6</sup>Department of Pulmonology and Allergy, Hallym University Dongtan Sacred Heart Hospital, Hwaseong, Korea  
<sup>7</sup>Department of Digital Health, SAIHST, Sungkyunkwan University, Seoul, Korea  
<sup>8</sup>Division of Endocrinology and Metabolism, Department of Internal Medicine, Seoul St. Mary's Hospital, College of Medicine, The Catholic University of Korea, Seoul, Korea

## ABSTRACT


**Background:** The most important aspect of a retrospective cohort study is the operational definition (OP) of the disease. We developed a detailed OP for the detection of sodium-glucose cotransporter-2 inhibitors (SGLT2i) related to diabetic ketoacidosis (DKA). The OP was systemically verified and analyzed.

**Methods:** All patients prescribed SGLT2i at four university hospitals were enrolled in this experiment. A DKA diagnostic algorithm was created and distributed to each hospital; subsequently, the number of SGLT2i-related DKAs was confirmed. Then, the algorithm functionality was verified through manual chart reviews by an endocrinologist using the same OP.


**Results:** A total of 8,958 patients were initially prescribed SGLT2i. According to the algorithm, 0.18% (16/8,958) were confirmed to have SGLT2i-related DKA. However, based on manual chart reviews of these 16 cases, there was only one case of SGLT2i-related DKA (positive predictive value = 6.3%). Even after repeatedly narrowing the diagnosis range of the algorithm, the effect of a positive predictive value was insignificant (6.3–10.0%,  $P > 0.999$ ).

**Conclusion:** Owing to the nature of electronic medical record data, we could not create an algorithm that clearly differentiates SGLT2i-related DKA despite repeated attempts. In all retrospective studies, a portion of the samples should be randomly selected to confirm the accuracy of the OP through chart review. In retrospective cohort studies in which chart review is not possible, it will be difficult to guarantee the reliability of the results.


**Keywords:** Cohort Studies; Diabetes Complications; Diabetic Ketoacidosis; Diabetes Mellitus, Type 2; Sodium-Glucose Transporter 2 Inhibitors

Jeong-Hee Choi 

<https://orcid.org/0000-0002-0599-875X>

Soo-Yong Shin 

<https://orcid.org/0000-0002-2410-6120>

Hun-Sung Kim 

<https://orcid.org/0000-0002-7002-7300>

#### Funding

This research was supported by a grant from Korea Institute of Drug Safety and Risk Management in 2019.

#### Disclosure

The authors have no potential conflicts of interest to disclose.

#### Author Contributions

Conceptualization: Kang DY, Kim H, Kim HS.  
Data curation: Ko S, Kim H, Shinn J, Kang MG, Kim HS. Formal analysis: Kang DY, Kim H, Kang MG, Kim HS. Writing - original draft: Kang DY, Kim H, Kim HS. Writing - review & editing: Byeon SJ, Choi JH, Shin SY

## INTRODUCTION

Sodium-glucose cotransporter-2 inhibitors (SGLT2i) have been proven to reduce weight and prevent cardiovascular disease. They are among the most recommended oral hypoglycemic agents for diabetic patients.<sup>1,2</sup> These inhibitors are clinically powerful; however, their associated side effects cannot be overlooked.<sup>3,4</sup> In particular, the US Food and Drug Administration has warned of the risk of diabetic ketoacidosis (DKA) and reported SGLT2i-related DKA, an uncommon but fatal side effect.<sup>5-7</sup> Unlike in other countries, the adverse effects of SGLT2i in South Korea have been reported only through voluntary physician reports. To determine the actual status of SGLT2i-related DKA in real clinical fields, a large amount of data on SGLT2i prescriptions must be obtained. Therefore, the safety of SGLT2i must be analyzed using real-life multihospital data. In this regard, a retrospective cohort study based on multicenter electronic medical records (EMRs) would be highly beneficial.<sup>8</sup>

With the rise of big data, numerous retrospective cohort studies are already underway. The data preprocessing of “operational definition (OP)” and “data quality management” of the disease is considered very important in this retrospective cohort study because, depending on the data preprocessing, the research results may vary greatly. However, only a few studies properly address this process, making it difficult to ascertain whether the research is reliable. Most research assumes that the disease OP has been properly established. However, OP verification is unreliable. Therefore, in this study, we tried to determine the accuracy of diagnostic rate of SGLT2i-related DKA in the retrospective cohort OP as compared to the actual one. Because DKA can only be definitively diagnosed using blood tests, rather than using clinical experience or the subjective judgment of medical staff, we determined that OP of SGLT2i-related DKA would be easy. Although our study deals with SGLT2i-related DKA, we sought to highlight the importance of OP in this retrospective cohort study.

## METHODS

### Data source

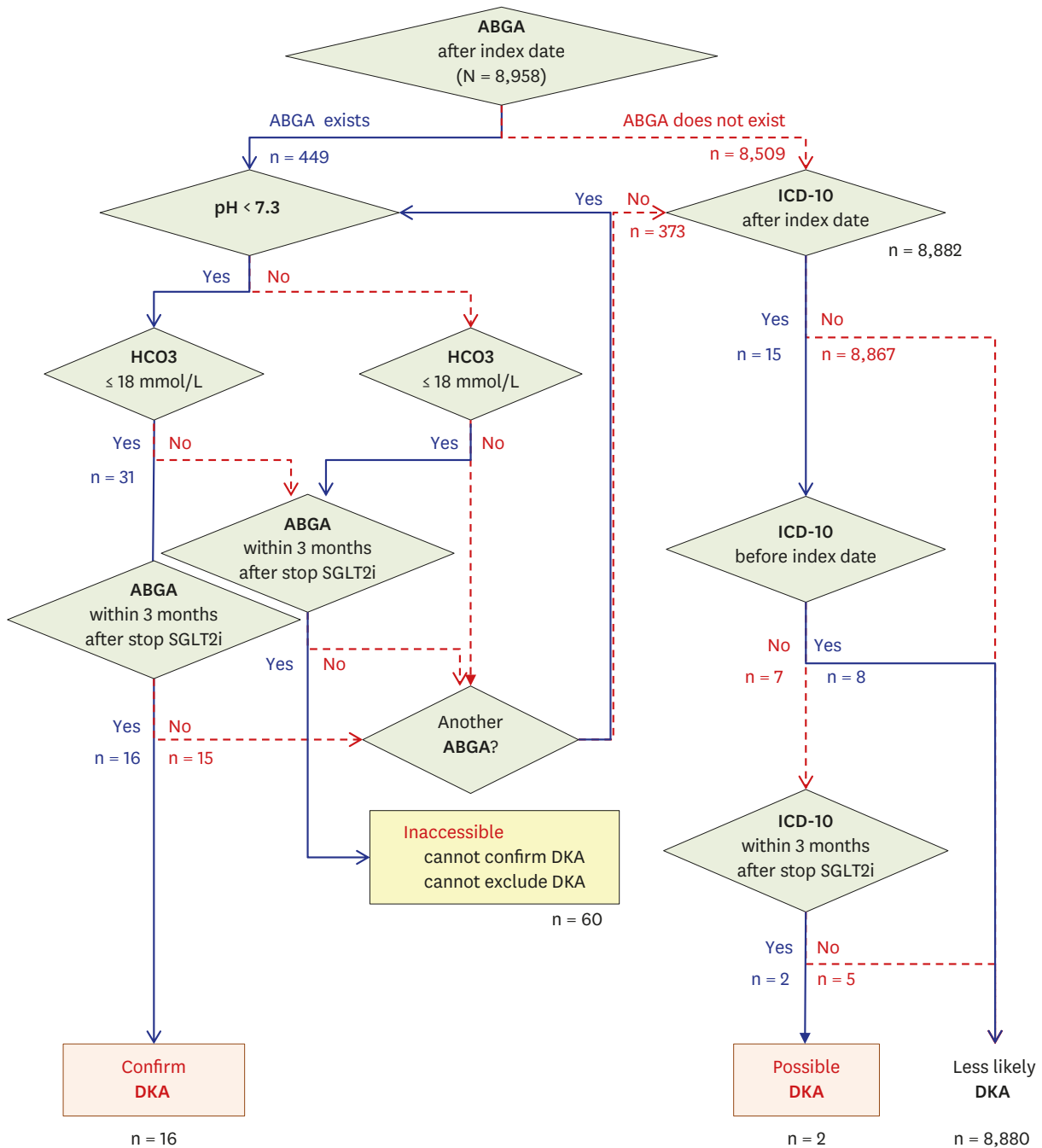
This study used common data model (CDM) data that were constructed by converting hospital EMR data into a CDM. Recently, CDMs for multicenter studies have been proposed to detect the side effects of specific drugs.<sup>9,10</sup> CDMs adapt the data of different structures from each hospital into a common form and provide analysis results for each hospital according to the research purpose. The CDM data were extracted by anonymizing personal data (sex, age, etc.) and medical data (diagnosis, examinations, treatments, and drug prescriptions) generated during a patient’s treatment in a hospital. Each hospital only holds data for patients treated at the given hospital and does not share raw data or personal patient data with other hospitals.<sup>10</sup>

### Study population and design

This study was an EMR-based retrospective cohort study that investigated DKA incidents occurring after using SGLT2i (dapagliflozin, empagliflozin, ertugliflozin, or ipragliflozin). It included four tertiary university hospitals in South Korea: The Catholic University Seoul St. Mary’s Hospital, Seoul National University Hospital, Hallym University Dongtan Sacred Heart Hospital, and Chungbuk National University Hospital. All outpatients and inpatients who had been prescribed SGLT2i from January 1, 2012, to May 31, 2019 were enrolled.

**Algorithm for detecting DKA**

The index date was the date on which SGLT2i was first prescribed. For the diagnosis of SGLT2i-related DKA, the presence of arterial blood gas analysis (ABGA) after the index date was first confirmed (Fig. 1).



**Fig. 1.** SGLT2i-related DKA detection algorithm. The solid lines represent a “Yes” in the algorithm. The broken lines represent a “No” in the algorithm. ABGA = arterial blood gas analysis, ICD-10 = International Statistical Classification of Diseases and Related Health Problems, SGLT2i = sodium–glucose cotransporter-2 inhibitor, DKA = diabetic ketoacidosis.

*1<sup>st</sup> Step – If ABGA is present*

If ABGA was present after the first prescription of SGLT2i, DKA diagnostic criteria—pH < 7.3 and bicarbonate  $\leq$  18 mmHg—were applied. If both the pH and bicarbonate values met the diagnostic criteria of DKA, the next step was to determine whether SGLT2i was discontinued. DKA was confirmed as SGLT2i-related DKA only if it occurred within three months after discontinuation of SGLT2i. Discontinuation of SGLT2i was defined as the discontinuation of SGLT2i prescription for more than 3 months, with patient visits maintained. The ABGA value was measured multiple times following the index date. Therefore, pH and bicarbonate values were repeatedly checked for all ABGA values. DKA could be completely excluded in all ABGAs when the pH was 7.3 or higher or the bicarbonate was above 18 mmHg. However, because DKA was sometimes diagnosed in other hospitals, they moved to a group without ABGA.

*2<sup>nd</sup> Step – If ABGA is not present*

In the absence of ABGA, DKA diagnosis is generally impossible. However, DKA is an endocrinology emergency. Thus, cases must be considered where a diagnosis was made at another hospital that was close to the place where DKA occurred without visiting the SGLT2i-prescribing hospital. In this case, we assume that the attending physician does not have an ABGA but would have entered “DKA” as the diagnosed disease. Because DKA is a serious emergency disease, we assumed that there will be few cases in which the attending physician randomly enters “DKA.” We confirmed the presence or absence of DKA based on the International Classification of Diseases, 10<sup>th</sup> edition (ICD-10) classification criteria (**Supplementary Table 1**). However, if the diagnosis term “DKA” was entered before the index date, medical staff often entered “DKA” repeatedly afterward. Therefore, we distinguished between the diagnostic term “DKA” before and after the index date.

*Final step*

After the index date, SGLT2i-related DKA could be confirmed if the pH and bicarbonate values met the diagnostic criteria for DKA. Conversely, if there was no ABGA and no “DKA” term was entered, the possibility of SGLT2i-related DKA could be excluded. In other cases, the possibility of SGLT2i-related DKA was considered to be very small but could not be completely excluded.

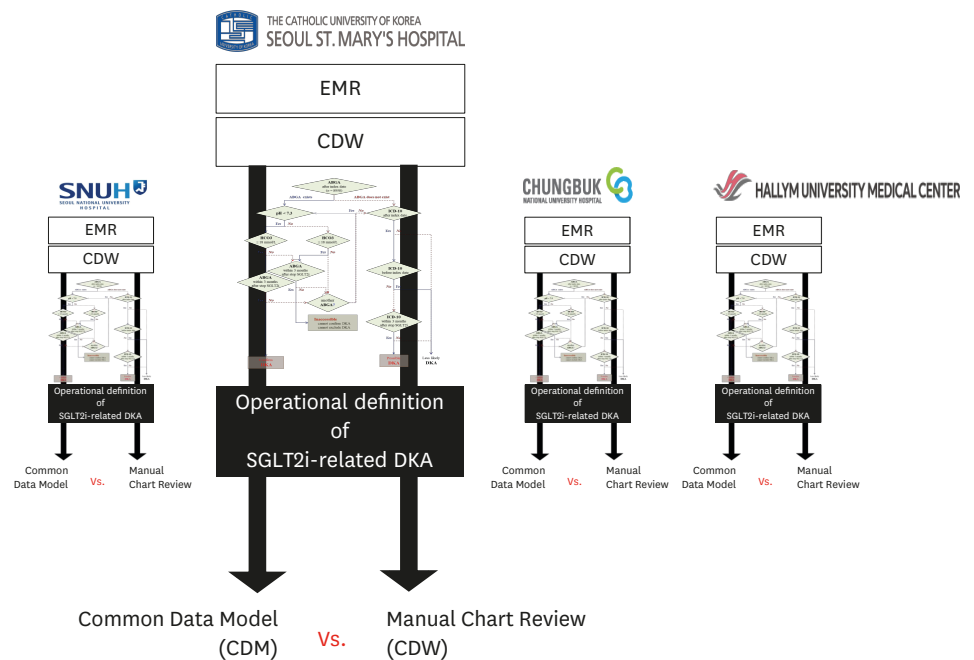
**Direct chart review**

DKA can be diagnosed from blood tests. However, owing to the nature of EMR data in retrospective cohort studies and the causes of DKA other than SGLT2i, the effectiveness of the developed algorithm in detecting SGLT2i-related DKA had to first be confirmed.

This study was conducted independently of CDM and clinical data warehouse (CDW). CDM converted from CDW does not provide patient identification protection; however, the CDW does provide patient identification number. Thus, CDW allows direct patient chart review. Therefore, endocrinologists at each hospital conducted a direct chart review for patients confirmed with SGLT2i-related DKA using the algorithm (**Fig. 2**). When DKA was suspected by the algorithm, the chart was directly reviewed by an endocrinologist: the diagnostic criteria of DKA includes a high anion gap defined as greater than 10<sup>11</sup>:

$$\text{DKA} = \text{glucose} > 250 \text{ mg/dL, pH} < 7.3, \text{ bicarbonate} < 18, \text{ anion gap} > 10$$

$$\text{Anion Gap} = [\text{Na}^+] - [\text{Cl}^-] - [\text{HCO}_3^-]$$



**Fig. 2.** Study design. Comparison of CDM and manual chart review of SGLT2i-related DKA. CDW = clinical data warehouse, EMR = electronic medical records, SGLT2i = sodium–glucose cotransporter-2 inhibitor.

### Protection of privacy

CDMs consist of anonymized EMRs held in different hospitals. The data are anonymized, and researchers cannot directly access individual data; only statistical results analyzed indirectly can be viewed.

### Statistical analysis

Data are expressed as numbers, including percentages for categorical variables. Chi-squared and Fisher's exact tests were performed to compare the four groups. All statistical analyses were performed using Statistical Analysis Software (SAS; SAS Institute Inc., Cary, NC, USA), and *P* values below 0.05 were considered statistically significant.

### Ethics statement

This study was approved by the Institutional Review Boards (IRBs) of the Catholic University (KC20RISI0413), Seoul National University Hospital (2004-221-1119), Chungbuk National University Hospital (CBNUH-04-032), and Hallym University Dongtan Sacred Heart Hospital (2019-07-013). Informed consent was waived because of the retrospective nature of the study.

## RESULTS

Data of 8,958 patients (3,624 patients in Seoul St. Mary's Hospital, 896 in Chungbuk National University Hospital, 3,809 in Seoul National University Hospital and 629 in Hallym University Dongtan Sacred Heart Hospital) administered with SGLT2i between January 1, 2012, and May 31, 2019 were collected (**Fig. 1**). Of the patients, 5% (449/8,958) had ABGA after the index date. Among them, 0.35% (31/8,958) had pH < 7.3 and bicarbonate < 18 mmHg; however, 15 tests were performed after discontinuing SGLT2i for more than three months. Therefore, SGLT2i-related DKA was suspected in 0.18% (16/8,958) patients.

Approximately 95% (8,509/8,958) of patients had no ABGA after the index date. Among the patients who were suspected of not having SGLT2i-related DKA, we found 15 patients with the “DKA” diagnosis. Eight of these were not newly diagnosed after the index date. After three or more months of discontinuing SGLT2i, five of the remaining seven patients with the “DKA” diagnosis were confirmed with general DKA not related to SGLT2i use. Therefore, only two patients were suspected of having SGLT2i-related DKA. The 94.8% (8,494/8,958) of patients who did not have ABGAs and did not have a “DKA” diagnosis were excluded from consideration for SGLT2i-related DKA. Finally, 99.1% (8880/8958) showed “less likely DKA.”

The results of 18 patients who were identified as having SGLT2i-related DKA by ABGA are listed in **Table 1**. In addition, details of the two patients who were identified as having SGLT2i-related DKA by the named diagnosis are summarized in **Table 2**. Only one case out of the 18 cases (Patient 1, hereafter abbreviated as Pt 1) was confirmed to have SGLT2i-related DKA in chart reviews. The temporal and sequential relationship between SGLT2i prescription and DKA was clear, and the blood glucose and ketone levels indicated SGLT2i-related DKA. Nine cases were confirmed or suspected as general DKA. One of these cases (Pt 2), where the patient was unable to receive insulin while traveling and the blood glucose level at the emergency department was 635 mg/dL, was confirmed as a general DKA case. In the remaining eight cases (Pt 3–Pt 10), it was difficult to find an association with SGLT2i, and a likelihood of high anion gap metabolic acidosis due to factors other than DKA existed. However, because a “DKA” ICD-10 classification was included in the EMR, these eight cases were classified as suspected general DKA to reflect the opinion of the medical staff at the time. In one of the cases (Pt 10), there was a prescription for SGLT2i in the EMR; however, the chart review confirmed that the patient did not take SGLT2i, and general DKA was

**Table 1.** Chart review by endocrinologists of patients diagnosed with “Confirmed DKA” in our algorithm

Patients	Sex/age	By algorithm					Anion gap	By chart review - opinion of endocrinologists
		First prescription date of SGLT2i	Last prescription date of SGLT2i	Date of DKA diagnosis	pH	HCO <sub>3</sub>		
Confirmed as SGLT2i-related DKA								
Pt 1	M/44	2017-01-06	2017-01-13	2017-01-13	7.2	12.3	18.0	
Confirmed as general DKA, not SGLT2i-related DKA								
Pt 2	M/78	2017-10-18	2018-06-09	2018-06-09	7.0	< 10	37.0	
Suspected as general DKA								
Pt 3	F/46	2018-01-29	2018-08-16	2018-02-01	7.3	18.2	15.8	
Pt 4	F/57	2017-06-14	2017-09-10	2017-09-17	6.9	10.0	34.0	
Pt 5	F/80	2015-02-17	2015-03-18	2015-05-22	6.6	12.8	28.2	Admission for acute respiratory distress syndrome
Pt 6	F/62	2015-07-13	2015-09-05	2015-09-05	7.3	10.8	20.2	Pancreatic mass with multiple liver meta
Pt 7	F/65	2016-11-03	2017-03-02	2016-12-17	7.1	3.4	14.6	Pancreatic cancer, acute cholecystitis
Pt 8	F/88	2018-07-03	2018-07-08	2018-08-01	7.3	13.4	15.6	No abnormalities other than general anesthesia surgery a month ago
Pt 9	F/75	2018-03-11	2018-03-29	2018-04-06	7.2	10.0	23.0	No abnormalities other than general anesthesia surgery a month ago
Pt 10	F/47	2018-05-29	2018-09-06	2018-04-15	7.3	18.2	15.8	Not taking SGLT2i at the time of DKA diagnosis
Exclude DKA								
Pt 11	M/61	2017-10-10	2017-11-07	2017-11-17	7.3	19.5	29.5	Occurred immediately after liver transplantation
Pt 12	M/63	2018-03-22	2018-08-26	2018-06-19	7.3	18.6	19.4	Occurred immediately after liver transplantation
Pt 13	F/59	2016-12-15	2017-08-01	2017-01-26	7.3	16.4	14.3	ABGA results during surgery
Pt 14	M/67	2015-04-01	2016-08-19	2016-06-24	7.3	18.8	11.2	Admission for Pneumothorax/No high Anionic gap
Uncertain								
Pt 15	M/67	2016-01-26	2016-02-29	2016-02-29	6.9	15.7	24.3	Records are poorly written
Pt 16	F/70	2015-06-03	2016-01-27	2016-02-25	7.2	11.9	-	DKA occurred one month after stopping taking SGLT2i

DKA = diabetic ketoacidosis, SGLT2i = sodium glucose cotransporter 2 inhibitors, ABGA = arterial blood gas analysis.

**Table 2.** Chart review by endocrinologists of patients diagnosed with “DKA possibility” in our algorithm

Patients	Sex/age	By algorithm					By chart review	
		First prescription date of SGLT2i	Last prescription date of SGLT2i	Date of DKA diagnosis	pH	HCO <sub>3</sub>	Anion gap	Opinion of endocrinologists
Pt 17	M/63	Prescribing at another hospital		2018-04-03	6.9	9.8	19.2	Exclude DKA Results at the time of death due to hepatic failure
Pt 18	M/20	2016-11-28	2018-05-30	2016-11-28	-	-	-	Uncertain No record of DKA, only presence of ICD-10 codes

DKA = diabetic ketoacidosis, SGLT2i = sodium glucose cotransporter 2 inhibitors, ICD-10 = The International Classification of Diseases, 10th Edition.

suspected. Furthermore, the medical records showed a “DKA” diagnosis for four patients (Pt 11–Pt 14) for whom DKA was excluded from the actual chart review. The ABGA values of two patients (Pt 11, Pt 12) were measured immediately after liver transplantation and that of one (Pt 13) was measured during surgery. In other words, the findings suggested a high anion gap metabolic acidosis due to other causes. The other patient (Pt 14) showed a normal anion gap; thus, DKA could be excluded. In addition, for two cases (Pt 15, Pt 16), DKA could neither be suspected nor excluded through chart review alone. A patient who was prescribed SGLT2i at another hospital visited the emergency department (Pt 17), and it was difficult to judge DKA through ABGA alone. Even when there was no record of DKA and only the diagnosis name existed (Pt 18), DKA could not be confirmed (Table 2).

As a result, the positive predictive value (PPV) of our algorithm based on “confirmed DKA” was only 6.3% (1/16 patients) (Supplementary Table 2). Even if the algorithm test date criteria cutoff was changed to within 1 month (6.7%, 1/15), within 15 d (7.7%, 1/13), and within 7 d (10.0%, 1/10) after stopping SGLT2i, the PPV was considerably low. There was no statistically significant difference in the interval after stopping SGLT2i ( $P > 0.999$ ) (Supplementary Table 2).

## DISCUSSION

Recently, real-world evidence (RWE), which creates large amounts of data in a short time, has become a major subject in the field of medicine.<sup>8</sup> However, there are many concerns about various uncontrolled biases in RWE that have not been clearly resolved,<sup>9</sup> and various OPs have been proposed to address them.<sup>12</sup> Because CDMs for multicenter research are considered RWE, they are also of concerns. In this research, we aimed to create a detection algorithm for SGLT2i-related DKA based on CDM data. Further, we attempted to judge the reliability of this method using direct chart reviews. The results of the developed algorithm were highly unsatisfactory.

DKA has a clear diagnostic standard based on high anion gap metabolic acidosis,<sup>11</sup> which is suitable for retrospective cohort research. The existence of a definite test value for diagnosing DKA using EMR data means that it is possible to obtain a clear diagnosis using an algorithm. Moreover, because DKA is a life-threatening side effect, diagnosis via the ICD-10 classification itself must be relatively accurate. Therefore, we initially believed that SGLT2i-related DKA could be accessed with only two items: ABGA and ICD-10 classification. In addition, SGLT2i-related DKA is a very rare side effect.<sup>3-5</sup> To measure the incidence of such rare side effects, a cohort study with many samples is more useful than a randomized controlled trial (RCT)<sup>8</sup> because it is difficult to generalize a DKA incidence from a small-sample-sized RCT to the entire real-world population. Therefore, we performed a cohort study. We believe it is possible to objectively estimate the incidence of SGLT2i-related DKA occurring in real clinical settings. However, the most problematic consideration in creating

the proposed detection algorithm was that SGLT2i-related DKA has very different clinical features from general DKA.<sup>4,13-15</sup> Considering the various causes of DKA, the goal was to clearly distinguish between them and select only SGLT2i-related DKA. Thus, we repeatedly upgraded our algorithm by consulting with seven endocrinologists.

In this study, laboratory findings of glucose, sodium, and chloride levels were not considered in the diagnosis of SGLT2i-related DKA; only pH and bicarbonate levels were considered in the algorithm. Therefore, including all the diagnostic criteria of general DKA in the diagnosis algorithm would help in diagnosing SGLT2i-related DKA accurately. Although the sensitivity of the diagnosis of SGLT2i-related DKA could be increased in this case, a significant underestimation was likely as well because it is sometimes unnecessary to confirm the DKA diagnosis criteria to confirm SGLT2i-related DKA in an actual clinical setting. Nevertheless, only some tests included in the actual DKA diagnostic criteria are considered in the final diagnosis. In other words, there is a possibility of missing the diagnosis of real SGLT2i-related DKA. Conversely, if only a part of the diagnostic criteria is included, the likelihood of missing the real SGLT2i-related DKA decreases; however, the likelihood of overestimation will increase. Therefore, we planned to confirm SGLT2i-related DKA through direct chart reviews in early stages of algorithm development. Consequently, only pH and bicarbonate values—the core diagnostic criteria of DKA—were used to induce the overestimation of SGLT2i-related DKA diagnosis. In addition, a direct chart review was conducted on patients with suspected SGLT2i-related DKA.

According to various RCT results, SGLT2i-related DKA incidence is reported to be 0.02–0.1%.<sup>14,16,17</sup> However, as mentioned earlier, large-scale cohort studies may be more useful in studying side effects with a low incidence, such as SGLT2i-related DKA. Furthermore, the occurrence of SGLT2i-related DKA not recognized by medical staff at the actual treatment site is expected to be more frequent. It is also reported that the actual diagnosis rate is lower than the suspected occurrence rate of SGLT2i-related DKA.<sup>18</sup> Here, “confirmed DKA” was found for 0.25% (22/8,958) patients using the algorithm, which achieved our initial goal of overestimating the diagnosis of SGLT2i-related DKA. In this study, only one case of SGLT2i-related DKA (0.01%, 1/8,958) was reported using chart review, which aligned with the results of other studies. Because our study planned direct chart review by experts from the beginning, we minimized the criteria of OP and secured many overestimated cases. Therefore, it was expected that SGLT2i-related DKA would be higher than that in the RCT; however, the results were opposite. There was also a likelihood that the physicians did not recognize SGLT2i-related DKA nor perform active laboratory tests.

The anion gap is an essential diagnostic criterion of DKA; nevertheless, it was excluded from the proposed algorithm. Serum sodium and serum chloride values are required to calculate the anion gap.<sup>11,19</sup> However, an endocrinologist checked the anion gap during the actual chart review and found that, in a few cases, sodium and chloride were measured at the same time as ABGA. In other words, the anion gap values in the EMR data may have been unreliable. Therefore, we were concerned that too many patients would be excluded if the anion gap was included in the diagnostic criteria. After reviewing the chart, in some cases, general DKA could be confirmed because of a high anion gap; however, in some cases, confirming SGLT2i-related DKA was difficult. This is considered an intrinsic limitation of EMR-based retrospective cohort research in which only correlations can be measured without considering causalities between SGLT2i and DKA.<sup>9,12</sup> Despite the chart reviews, the main reason for the difficulty in distinguishing between general DKA and SGLT2i-related DKA



is that EMR data are not sufficiently reliable.<sup>12</sup> Unless medical staff clearly suspect SGLT2i-related DKA, data may be insufficient, and the contents of the test results or charts would not reflect the patient's situation.<sup>20</sup> The anion gap, for example, helps diagnose DKA and can help in tracking whether ketosis improves in these situations.<sup>11</sup> However, through direct chart review, we determined that normal anion gap acidosis may occur if the medical staff do not anticipate DKA in advance and perform intravenous hydration for other treatment purposes. Furthermore, high anion gap metabolic acidosis does not only occur in DKA; it may be caused by renal failure, rhabdomyolysis, lactic acidosis, and other drug- and alcohol-related intoxication, including ketoacidosis.<sup>21,22</sup> If a detailed medical history is not recorded in the EMR, identifying the cause of DKA will be difficult. Thus, there is not only less confidence in the test results but also no clear diagnostic standard that satisfies the diagnostic criteria of SGLT2i-related DKA in the clinical setting.

The diagnosis of SGLT2i-related DKA may have been delayed because SGLT2i-related DKA, unlike general DKA, can occur at normal blood glucose levels.<sup>13,16,23</sup> Moreover, glucose levels could not be included in the diagnostic criteria because relevant data were not recorded at the treatment site. Thus, we believe that SGLT2i-related DKA diagnosis may have been overestimated owing to the lack of glucose level and anion gap data in the algorithm.

Because DKA is a serious complication and direct chart review by medical staff is necessary for accurate diagnosis, overestimation and not underestimation was more appropriate for this study. When analyzing SGLT2i-related DKA, the relationship between the period when SGLT2i is used and that when DKA occurs must be understood. In this study, DKA occurring within three months of discontinuing SGLT2i administration was assumed to be SGLT2i-related DKA. This also contributed toward overestimation of the detection of SGLT2i-related DKA. The period of three months was arbitrarily defined to induce overestimation and because chart reviews were planned. However, according to actual chart reviews, we found that this period did not correlate with the occurrence of SGLT2i-related DKA. Furthermore, information on disturbance variables that are likely to affect the occurrence of SGLT2i-related DKA should be collected. Although it is mentioned that the data must be acquired continuously, selecting SGLT2i-related DKA accurately is difficult because EMR data do not include the various causes of DKA. The goal was to upgrade the algorithm through continuous feedback based on chart reviews. Thus, algorithms and not manual decision-making should be used for decision support at this point.

After the suspension of SGLT2i, a significant aspect was noted at the time of diagnosing DKA via chart review. Even when DKA occurrence was suspected in the past, SGLT2i was sometimes still prescribed (Pt 3, Pt 7, Pt 10, Pt 12, Pt 13, and Pt 14). In addition, SGLT2i was continuously prescribed for elderly patients for whom SGLT2i was not recommended (Pt 2, Pt 5, Pt 8, and Pt 9). Although it is questionable to conclude that DKA was caused by such prescriptions, it is an important point indicating that more careful prescriptions are needed.

Our results make it difficult to clearly determine a specific disease using only OPs. This is especially true when various causes of DKA exist, although test results may indicate DKA. Using an endocrinologist's chart review, it was often possible to suspect high anion gap metabolic acidosis owing to factors other than DKA. However, because the ICD-10 DKA classification existed in the medical records, we decided to rely on that DKA diagnosis. In other words, it was assumed that the data extracted from this study corresponded to DKA; subsequently, we focused on determining whether the DKA was due to SGLT2i or other causes.

The primary focus was to distinguish SGLT2i-related DKA from general DKA to a substantial extent; however, this was difficult without direct chart reviews. Moreover, as shown in our study, the detection of SGLT2i-related DKA through manual chart reviews was difficult. Consequently, achieving such detection with an algorithm would also be difficult. Our results show that SGLT2i-related DKA could be suspected due to DKA occurrence while SGLT2i was administered. Nonetheless, it was very difficult to evaluate this aspect using an algorithm alone. Moreover, when detecting diagnoses based on the ICD-10 classification, we extracted only DKA data. However, we should have also identified general metabolic acidosis because the medical staff might have failed to recognize the association with SGLT2i. The definitive OP with medical knowledge must be studied and analyzed in the future. Approaches through various fields, such as drug dynamics and continuous algorithm updates according to expert chart reviews, will be required because the results for SGLT2i-related DKA depend on the OP.<sup>12</sup> In this study, although algorithm updates were performed seven times, the algorithm failed to accurately determine cases of specific diseases. To detect a rare disease, the specificity and negative predictive values (NPVs) of the algorithm must be increased; however, this may vary depending on specific purposes. Thus, the algorithm should be allowed to perform overestimations and consider all situations wherein DKA is likely to occur. Moreover, a direct chart review is indispensable for updating the algorithm via continuous chart reviews.

In addition to the aforementioned limitation, our study has the inherent limitations common to retrospective cohort studies. First, SGLT2i medication compliance, the most important factor in adverse drug reactions, is unclear. Second, DKA is a serious endocrinological emergency. If an actual DKA occurs, the patients get treated at a nearby hospital and not where the SGLT2i was prescribed. In such cases, medical staff should prioritize checking the charts, if available. Finally, to determine the accuracy of the algorithm, the sensitivity, specificity, PPV, and NPV must be evaluated. However, not all patients taking SGLT2i were chart-reviewed in this study—only PPVs were possible. However, because PPV was low (6.3–10.0%), calculating the remaining sensitivity, specificity, and NPV was not relevant. A high PPV in diseases with very low prevalence is not expected.

We used a CDM in this study. Similar to the retrospective cohort studies, CDMs require a unified OP because different results are obtained depending on the design of OP.<sup>12</sup> Therefore, actual patient data should be checked to verify if the OP was well crafted. Although CDM is a multicenter trial, it has the advantage of protecting the privacy of the study subjects because personal information is not collected. However, verification is often impossible owing to this protective measure. Some studies have highlighted that medical product safety surveillance is a strength of retrospective cohort studies, including CDMs.<sup>8,24</sup> However, it is uncertain if side effects can be appropriately detected in the retrospective cohort studies that identify only correlations and not causalities.<sup>9,12</sup> Owing to the nature of such retrospective cohort research, the OP accuracy must be verified by random direct chart reviews. Protecting patients' personal information is important; however, in retrospective cohort studies, data revalidation is also crucial. Studies that can be performed with CDMs must be distinguished from those that cannot. A CDM emphasizing privacy has limited practical reliability because the OP of a specific disease cannot be verified.

In this study, directly checking the SGLT2i-related DKA based on the actual chart review and upgrading the algorithm accordingly had limitations. Owing to the limitations in EMR data, an algorithm that clearly differentiates SGLT2i-related DKA is not possible. However, the novelty of our study lies in the limitations of each step in the OP algorithm being

clinically and realistically presented. We suggested the implications of the research results and methods of upgrading the algorithm. In addition, we analyzed physicians' responses to DKA at each stage. Before proceeding with clinical studies, the purpose and results of the study should be carefully considered; therefore, active participation by clinicians is required. Therefore, it a sufficient validation for OP of a specific disease is required before CDM research. Otherwise, an open multicenter trial that can understand the patient's condition may be much better than CDM. Notably, the field of medicine emphasizes not only data abundance but also data quality.

## ACKNOWLEDGMENTS

To create a more accurate detection algorithm for SGLT2i-related DKA, seven endocrinologists were consulted. We would especially like to thank the seven endocrinologists who participated, including Chul Sik Kim, Heung Yong Jin, Sang Soo Kim, Seung Jin Han, Jung Hee Kim, Yeoree Yang, and Seung-Hwan Lee.

## SUPPLEMENTARY MATERIALS

### Supplementary Table 1

Diabetic Ketoacidosis based on the International Classification of Diseases, 10<sup>th</sup> edition (ICD-10) classification criteria

[Click here to view](#)

### Supplementary Table 2

Statistical analysis of algorithm about SGLT2i related to DKA

[Click here to view](#)

## REFERENCES

1. American Diabetes Association. 9. Pharmacologic approaches to glycemic treatment: *standards of medical care in diabetes-2019*. *Diabetes Care* 2019;42 Suppl 1:S90-102.  
[PUBMED](#) | [CROSSREF](#)
2. Kim MK, Ko SH, Kim BY, Kang ES, Noh J, Kim SK, et al. 2019 clinical practice guidelines for type 2 diabetes mellitus in Korea. *Diabetes Metab J* 2019;43(4):398-406.  
[PUBMED](#) | [CROSSREF](#)
3. Esteban-Jiménez O, Navarro-Pemán C, Urieta-González L. Safety of SGLT2 inhibitors. A review of the adverse drug reactions registered in a national database. *Semergen* 2018;44(1):23-9.  
[PUBMED](#)
4. Barski L, Eshkoli T, Brandstaetter E, Jotkowitz A. Euglycemic diabetic ketoacidosis. *Eur J Intern Med* 2019;63:9-14.  
[PUBMED](#) | [CROSSREF](#)
5. Fadini GP, Bonora BM, Avogaro A. SGLT2 inhibitors and diabetic ketoacidosis: data from the FDA Adverse Event Reporting System. *Diabetologia* 2017;60(8):1385-9.  
[PUBMED](#) | [CROSSREF](#)
6. Burke KR, Schumacher CA, Harpe SE. SGLT2 inhibitors: a systematic review of diabetic ketoacidosis and related risk factors in the primary literature. *Pharmacotherapy* 2017;37(2):187-94.  
[PUBMED](#) | [CROSSREF](#)

7. Bonora BM, Avogaro A, Fadini GP. Sodium-glucose co-transporter-2 inhibitors and diabetic ketoacidosis: an updated review of the literature. *Diabetes Obes Metab* 2018;20(1):25-33.  
[PUBMED](#) | [CROSSREF](#)
8. Kim HS, Lee S, Kim JH. Real-world evidence versus randomized controlled trial: clinical research based on electronic medical records. *J Korean Med Sci* 2018;33(34):e213.  
[PUBMED](#) | [CROSSREF](#)
9. Kim HS, Kim JH. Proceed with caution when using real world data and real world evidence. *J Korean Med Sci* 2019;34(4):e28.  
[PUBMED](#) | [CROSSREF](#)
10. Lai EC, Ryan P, Zhang Y, Schuemie M, Hardy NC, Kamijima Y, et al. Applying a common data model to Asian databases for multinational pharmacoepidemiologic studies: opportunities and challenges. *Clin Epidemiol* 2018;10:875-85.  
[PUBMED](#) | [CROSSREF](#)
11. Kim HS, Kim DJ, Yoon KH. Medical big data is not yet available: why we need realism rather than exaggeration. *Endocrinol Metab (Seoul)* 2019;34(4):349-54.  
[PUBMED](#) | [CROSSREF](#)
12. Overhage JM, Ryan PB, Reich CG, Hartzema AG, Stang PE. Validation of a common data model for active safety surveillance research. *J Am Med Inform Assoc* 2012;19(1):54-60.  
[PUBMED](#) | [CROSSREF](#)
13. Nyenwe EA, Kitabchi AE. The evolution of diabetic ketoacidosis: an update of its etiology, pathogenesis and management. *Metabolism* 2016;65(4):507-21.  
[PUBMED](#) | [CROSSREF](#)
14. Taylor SI, Blau JE, Rother KI. SGLT2 inhibitors may predispose to ketoacidosis. *J Clin Endocrinol Metab* 2015;100(8):2849-52.  
[PUBMED](#) | [CROSSREF](#)
15. Singh AK. Sodium-glucose co-transporter-2 inhibitors and euglycemic ketoacidosis: Wisdom of hindsight. *Indian J Endocrinol Metab* 2015;19(6):722-30.  
[PUBMED](#) | [CROSSREF](#)
16. Umpierrez G, Korytkowski M. Diabetic emergencies - ketoacidosis, hyperglycaemic hyperosmolar state and hypoglycaemia. *Nat Rev Endocrinol* 2016;12(4):222-32.  
[PUBMED](#) | [CROSSREF](#)
17. Erondy N, Desai M, Ways K, Meininger G. Diabetic ketoacidosis and related events in the canagliflozin type 2 diabetes clinical program. *Diabetes Care* 2015;38(9):1680-6.  
[PUBMED](#) | [CROSSREF](#)
18. Tang H, Li D, Wang T, Zhai S, Song Y. Effect of sodium-glucose cotransporter 2 inhibitors on diabetic ketoacidosis among patients with type 2 diabetes: a meta-analysis of randomized controlled trials. *Diabetes Care* 2016;39(8):e123-4.  
[PUBMED](#) | [CROSSREF](#)
19. Johnsson KM, Ptaszynska A, Schmitz B, Sugg J, Parikh SJ, List JF. Urinary tract infections in patients with diabetes treated with dapagliflozin. *J Diabetes Complications* 2013;27(5):473-8.  
[PUBMED](#) | [CROSSREF](#)
20. Modi A, Agrawal A, Morgan F. Euglycemic diabetic ketoacidosis: a review. *Curr Diabetes Rev* 2017;13(3):315-21.  
[PUBMED](#) | [CROSSREF](#)
21. Kitabchi AE, Umpierrez GE, Miles JM, Fisher JN. Hyperglycemic crises in adult patients with diabetes. *Diabetes Care* 2009;32(7):1335-43.  
[PUBMED](#) | [CROSSREF](#)
22. Laakso M, Pyörälä K. Age of onset and type of diabetes. *Diabetes Care* 1985;8(2):114-7.  
[PUBMED](#) | [CROSSREF](#)
23. Goldenberg RM, Berard LD, Cheng AY, Gilbert JD, Verma S, Woo VC, et al. SGLT2 inhibitor-associated diabetic ketoacidosis: clinical review and recommendations for prevention and diagnosis. *Clin Ther* 2016;38(12):2654-2664.e1.  
[PUBMED](#) | [CROSSREF](#)
24. Hayami T, Kato Y, Kamiya H, Kondo M, Naito E, Sugiura Y, et al. Case of ketoacidosis by a sodium-glucose cotransporter 2 inhibitor in a diabetic patient with a low-carbohydrate diet. *J Diabetes Investig* 2015;6(5):587-90.  
[PUBMED](#) | [CROSSREF](#)