



## Incomplete Resection of Necrotic Bowel May Increase Mortality in Infants with Necrotizing Enterocolitis

Parvesh Mohan Garg<sup>1</sup>, Anas Bernieh<sup>2</sup>, Mary M. Hitt<sup>1</sup>, Ashish Kurundkar<sup>3</sup>, Kristen V. Adams<sup>2</sup>, Chad Blackshear<sup>4</sup>, Akhil Maheshwari<sup>5</sup>, Ali G. Saad<sup>1,6</sup>

<sup>1</sup>Department of Pediatrics/Neonatology, University of Mississippi Medical Center, Jackson, Mississippi <sup>2</sup>Department of Pathology, University of Mississippi Medical Center, Jackson, Mississippi <sup>3</sup>Department of Pathology, University of Alabama, Birmingham, Alabama

<sup>4</sup>Department of Data Sciences, University of Mississippi Medical Center, Jackson, Mississippi

<sup>5</sup>Department of Pediatrics/Neonatology, Johns Hopkins University, Baltimore, Maryland

<sup>6</sup>Department of Pathology, University of Miami Miller School of Medicine, Miami, Florida

### Abstract

**Background:** Infants with advanced NEC often need surgical resection of necrotic bowel. We hypothesized that incomplete resection of NEC lesions, signified by the detection of necrotic patches in margins of resected bowel loops, results in inferior clinical outcomes.

**Methods:** We reviewed the medical records of infants with surgical NEC in the past 15 years for demographic, clinical, and histopathological data. We also developed statistical models to predict mortality and hospital stay.

**Results:** Ninety infants with surgical NEC had mean ( $\pm$  standard error) gestational age  $27.3 \pm 0.4$  weeks, birth weight  $1008 \pm 48$  g, NEC onset at  $25.2 \pm 2.4$  days, and resected bowel length of  $29.2 \pm 3.2$  cm. Seventeen (18.9%) infants who had complete resection of the necrosed bowel had fewer (4; 23.5%) deaths and shorter lengths of hospital stay. In contrast, a group of 73 infants with some necrosis within the margins of resected bowel had significantly more (34; 46.6%) deaths and longer hospital stay. The combination of clinical and histopathological data gave better regression models for mortality and hospital stay.

**Conclusion:** In surgical NEC, incomplete resection of necrotic bowel increased mortality and the duration of hospitalization. Regression models combining clinical and histopathological data were more accurate for mortality and the length of hospital stay.

---

Users may view, print, copy, and download text and data-mine the content in such documents, for the purposes of academic research, subject always to the full Conditions of use:[http://www.nature.com/authors/editorial\\_policies/license.html#terms](http://www.nature.com/authors/editorial_policies/license.html#terms)

**Address for correspondence:** Akhil Maheshwari, Department of Pediatrics, Division of Neonatology, Johns Hopkins University, Baltimore, Maryland 21287; Phone: (410) 955-5259; [akhil@jhmi.edu](mailto:akhil@jhmi.edu).

P.M.G., A.M., and A.S. designed the study, P.M.G., A.B., M.M.H., A.K., C.B., and A.G.S. collected and analyzed the data. All the authors contributed to and approved the manuscript.

**Conflicts of interest:** The authors disclose no conflicts.

## Introduction:

Necrotizing enterocolitis (NEC) is an inflammatory bowel necrosis seen in 5–10% of very-low-birth-weight infants born between 22–28 weeks' gestation (1). The disease remains a leading cause of morbidity and mortality, surgical intervention, and prolonged medical/nursing needs in the surviving infants. The etiopathogenesis is unknown; the occurrence of NEC may be higher in infants with enteric dysbiosis and overgrowth of Gram-negative bacteria (2–4). The risk of developing NEC may increase following hypoxia and/or hypothermia, with limited anti-microbial defenses due to immature Paneth cells, due to severe anemia and/or red blood cell transfusions, or following enteral exposure to immunological stimuli (4–8).

Infants with advanced NEC need intensive care, and if stable enough to withstand general anesthesia and surgery, may undergo an exploratory laparotomy (11). The necrotic segments of bowel are resected and the remaining intestine may be managed with primary anastomoses and/or intestinal stomata (5, 12–14). Histopathologically, the resected bowel typically shows coagulation necrosis, inflammation, interstitial hemorrhages, and reparative changes (18–24). These changes typically begin at the mucosa and progress outward towards the serosa. The severity of these pathological abnormalities may correlate with the disease severity, the pace of progression, and may even help predict the outcomes (9, 10).

In this study, we hypothesized that infants with surgical NEC were predisposed to adverse post-operative outcomes if they had incomplete removal of the diseased bowel, as indicated by the detection of necrotic changes in the margins of their resected intestine. This incomplete removal of the necrotic bowel could possibly delay recovery due to bacterial translocation and inflammation. Using a clinical-pathological approach, we first examined the medical records of the enlisted infants for their demographic information and clinical course. Surgical specimens were then examined to (a) confirm the diagnosis and grade the severity of necrosis; and (b) check resection margins to ascertain that all NEC-affected bowel had been completely removed.

## Methods:

This retrospective study was conducted at the University of Mississippi Medical Center (UMMC) at Jackson, Mississippi, after approval for patient rights by the Institutional Review Board and for compliance with the Health Insurance Portability and Accountability Act of 1996. The study was conducted at the UMMC neonatal intensive care unit (NICU), which is a regional referral center for infants with surgical NEC. A detailed review of the medical records identified 118 patients who underwent exploratory laparotomy for advanced NEC during the period between January 2000 and December 2015 (11). After excluding 9 infants who were missing important clinical data, and 19 with confounding disorders such as congenital heart disease, intestinal atresia, and spontaneous intestinal perforation (SIP), we identified 90 infants as eligible for this study (Figure 1).

**Clinical information:**

Demographic data such as birth weight, gestational age, gender, ethnicity (African-American, Caucasian, or Latino), and mode of delivery were noted. Other important clinical information included Apgar scores  $\geq 6$  at 5 min, age at initiation of feedings, culture-proven sepsis prior to NEC, central line use, patent *ductus arteriosus*, indomethacin therapy, and the age of onset and the clinical presentation of NEC (abdominal distension, bloody stools, and/or pre-feeding residuals  $\geq 30\%$  of the feeding volume).

Our primary clinical outcomes were the length of hospital stay and mortality from NEC. The surgical interventions described the length and specific region(s) of the intestine. The post-operative morbidities included the duration of paralytic ileus, pressor support for  $\geq 24$ h after surgery, and days of antibiotic treatment. The duration of parenteral nutrition was noted as the number of hospital days from surgery until they achieved 120 mL/kg/day of enteral feeding. Surgical complications and stoma creation were recorded. Short bowel syndrome was defined as the need for parenteral nutrition at discharge.

**Pathology:**

Hematoxylin & eosin (H&E)-stained sections of surgically resected intestine were evaluated by two blinded pathologists, one each from the University of Mississippi and the University of Alabama, Birmingham. We evaluated the resected bowel for (a) histopathological evidence of NEC, including coagulative necrosis, inflammation, hemorrhages, and reparative changes; and (b) completeness of the surgical resection of the intestine affected by NEC, evident by the healthy appearance and the absence of any necrotic/inflamed foci in the edges of the resected bowel. Two sections from both the proximal and distal edges were evaluated. Coagulative necrosis in intestinal cells was defined by the loss of hematoxylin staining of the nuclei and diminished cytoplasmic staining with eosin, but with relatively preserved, 'ghost-like' crypt-villus histoarchitecture. Inflammation was noted as infiltration by inflammatory cells such as monocytes and neutrophils. White blood cell (WBCs) counts were enumerated per high-power field (HPF) in the 4 layers of the intestine in NEC lesions. At least 10 HPFs were evaluated per specimen. Hemorrhages, marked by the extravasation of blood cells, were recorded in various layers of the intestine. Reparative changes included microscopic evidence of neo-vascularization, increased fibroblasts or myofibroblasts, and epithelial regeneration. The severity of NEC was assessed by the depth to which these histopathological changes (coagulative necrosis, inflammation, hemorrhages, and reparative changes), were seen; grade 1 was limited to the mucosa, grade 2 changes extended to the submucosa, grade 3 to the *muscularis*, and grade 4 change was transmural. The resection margins were evaluated by the depth up to which these changes were seen: group 1 was defined by 0–5% involvement of the margins, group 2 of 5–20%, group 3 of 20–50%, and a group 4 of  $>50\%$ . Figure 2 shows representative histopathological findings in surgically resected bowel loops.

**Statistical information:**

Statistical analyses were performed using the software programs STATA 15 (Stata Statistics, College Station, TX) and/or GraphPad Prism (GraphPad Software, San Diego, CA). Descriptive statistics were computed; categorical data were summarized as absolute and

relative frequencies and tested for differences using chi-square tests. Continuous data were presented as means with standard errors (SE) when distributions were symmetric or as medians (with first and third quartiles) when a skew was noted. Differences in continuous data were tested using a Student's *t*, or if the symmetry was in question, by a Mann-Whitney *U* test. Mortality, length of hospital stay, and other variables were analyzed using a generalized linear multivariable gamma model with and without adjustment for birth weight, gestation, gender, and mortality. Parameter estimates were computed by the least squares methods, with estimates, standard errors, and the 95% confidence intervals. T-values were used to compute the size of the difference relative to the variation in the sample data. Data were evaluated for normality of residuals using the Anderson-Darling, D'Agostino-Pearson, Shapiro-Wilk, and Kolmogorov-Smirnov tests. Differences were considered significant at  $p < 0.05$ .

## Results:

### Clinical information:

We enrolled 90 patients in this study (Figure 1), most of whom have been described previously (11). We correlated their clinical information and the histopathological characteristics of their resected bowel. These infants were born at (mean  $\pm$  SEM) of  $27.3 \pm 0.4$  weeks with a birth weight of  $1,008 \pm 48$  g. Forty (44.4%) infants were outborn. Fifty-six (62.2%) were male. Eighty (88.9%) were African American, 9 (10%) were Caucasian, and 1 (1.1%) was Latino. NEC occurred on  $25.2 \pm 2.4$  days; 83 (92%) presented with abdominal distension, 4 (4.5%) with feeding intolerance, and 3 (3.5%) with bloody stools.

All enrolled infants had radiological indicators of NEC such as *pneumatosis*, dilated bowel, and/or other signs of ileus. These patients underwent an exploratory laparotomy upon the onset of increasing abdominal distention, persistent hypotension and/or metabolic acidosis, or the need for repeated red blood cell transfusions. In addition to the radiological and clinical signs, NEC was further confirmed with intra-operative and pathological examination of the bowel. Histopathological findings of NEC were seen in the resected small intestine (ileum or jejunum) in 65 (72%), small and large intestine in 24 (27%), and the colon in one infant. Post-operative ileus lasted  $16.5 \pm 1.3$  days, and 55 (61.1%) infants needed extra intravenous fluids and pressor support. Thirty-eight (42.2%) patients died at  $102.6 \pm 14$  days, which was shorter than the discharge age of  $153.5 \pm 11$  days in the 52 (57.8%) survivors. Table 1 summarizes the clinical characteristics of the included infants and their mothers.

### Pathology:

We reviewed 250 intestinal specimens resected from our 90 patients. Each specimen was first examined with serial sections to estimate the histopathological severity of NEC, focusing on necrosis, inflammation, hemorrhages, and reparative changes. Then, we examined the edges to either confirm a clean resection or alternatively, estimate the depth to which the resection margins showed signs of NEC.

**Necrosis:** Intestinal loops resected from 17 infants (18.89%) had clean resection margins with no necrosis. These infants were classified into group A. The maximum necrosis grading in bowel loops resected from these infants was  $2.31 \pm 1.38$ . Group B included 29 infants (32.22%) whose resected bowel loops showed necrosis to a depth of  $9.14 \pm 0.61\%$  in the margins, and a maximum necrosis grading of  $2.03 \pm 0.25$ . Group C with 27 (30%) infants had  $26.85 \pm 1.58\%$  necrosis in the margins and a maximum necrosis grading of  $1.41 \pm 0.21$ , and group D had 17 infants (18.9%) with  $67.65 \pm 3.59\%$  necrosis in the resection margins and a necrosis grading of  $1.53 \pm 0.26$ . Compared to group A, groups B-D showed significantly increased necrosis in the resection margins ( $p < 0.001$ ). There was a trend for reduction in the maximum severity of necrosis in the resected bowel loop, but these differences did not reach significance ( $p = 0.08$ ).

The length of the resected intestine in group A was  $14.98 \pm 2.42$  cm. Intestinal resection in Group B was  $30 \pm 6.65$  cm, which seemed longer but did not reach significance ( $p = 0.09$ ). The length of the resected bowel was  $33.65 \pm 6.65$  cm ( $p = 0.018$ ) in group C and  $34.79 \pm 8.08$  cm ( $p = 0.025$ ) in group D. The depth of necrosis in the resection edges correlated negatively with reparative changes ( $r = -0.28$ ,  $p = 0.008$ ). The severity of necrosis in the intestinal segment correlated with inflammation ( $r = 0.38$ ,  $p < 0.001$ ) and hemorrhages ( $r = 0.37$ ,  $p < 0.001$ ).

**Inflammation:** The severity of inflammation in groups A-D was of grades  $2.71 \pm 0.28$ ,  $2.38 \pm 0.23$ ,  $2.7 \pm 0.1$ , and  $3.06 \pm 0.2$ , respectively. Inflammation was seen in  $14.12 \pm 2.36\%$ ,  $23.97 \pm 2.25\%$ ,  $23.7 \pm 2.35\%$ , and  $23.53 \pm 2.09\%$  of the resected margins ( $p = 0.025$  in groups A vs. B, and  $p = 0.036$  in groups A vs. C). There were  $52 \pm 9.5$ ,  $87.3 \pm 8.8$ ,  $98 \pm 8.9$ , and  $86.3 \pm 13$  WBCs/hpf, respectively, in the 4 groups ( $p = 0.01$ ). Besides the aforementioned association with necrosis, inflammation also correlated with hemorrhages ( $r = 0.52$ ,  $p < 0.001$ ) and gestational age ( $r = 0.21$ ,  $p = 0.05$ ). There were negative relationships with antenatal steroids ( $r = -0.27$ ,  $p = 0.012$ ) and days on PN ( $r = -0.27$ ,  $p = 0.035$ ), and negative trends with the length of hospitalization ( $r = -0.2$ ,  $p = 0.064$ ) and reparative changes in the resected intestine ( $r = -0.18$ ,  $p = 0.086$ ).

**Hemorrhages:** Hemorrhages were seen in 89 infants. Two infants had small bleeds, and larger hemorrhages were seen in 87. The severity of hemorrhages are shown in Table 2. In the 4 groups based on the severity of necrosis in resection margins, hemorrhages were seen in  $12.35 \pm 2.27\%$ ,  $20.34 \pm 2.12\%$ ,  $23.33 \pm 1.19\%$ , and  $17.94 \pm 2.94\%$  (group A vs. B,  $p = 0.02$ ; group A vs. C,  $p = 0.03$ ). In addition to the association with inflammation, there were negative trends with antenatal steroids ( $r = -0.18$ ,  $p = 0.08$ ) and reparative changes ( $r = -0.18$ ,  $p = 0.091$ ).

**Reparative changes:** Twenty-four of our 90 patients (26.67%) showed reparative changes. These changes correlated with hemorrhages ( $r = 0.21$ ,  $p = 0.046$ ) and with indomethacin use ( $r = 0.22$ ,  $p = 0.048$ ). There was also a trend for correlation with mortality ( $r = 0.19$ ,  $p = 0.076$ ).

In the resection margins, the average grades of reparative changes were  $0.24 \pm 0.16$ ,  $0.62 \pm 0.21$ ,  $0.27 \pm 0.1$ , and  $1.24 \pm 0.3$  (group A vs. D,  $p = 0.02$ ; group C vs. D,  $p = 0.01$ ). The

overall grades in the 4 groups seemed artificially lower because reparative changes were seen only in a minority of infants. In margins, group B showed overall stronger reparative changes than group D ( $3.08 \pm 1.75\%$  vs.  $0 \pm 0\%$ ;  $p=0.02$ ), and a trend for stronger changes than group C ( $p=0.056$ ). Group C seemed to have stronger changes in the resection margins than group D ( $p=0.06$ ).

### Clinical-pathological correlation:

The clinical and pathological data are described below and in Table 2.

**Mortality:** Infants who died of NEC ( $n=38$ , 42.2%) were born at  $26.11 \pm 0.48$  weeks and weighed  $862.76 \pm 52.48$  g, compared to the survivors who were born slightly later at  $28.1 \pm 0.5$  weeks ( $p=0.033$ ) and weighed  $1120.39 \pm 70.41$  g ( $p=0.008$ ). Gender distribution (16/38 female fatalities vs. 18/52 female survivors), SGA (6/38 deaths vs. 8/52 survivors), and the onset of NEC ( $27.7 \pm 4.3$  vs.  $23.3 \pm 2.7$  days) did not affect mortality. Infants who died of NEC lost more bowel ( $37.5 \pm 6.04$  vs.  $23.4 \pm 3.19$  cm;  $p=0.03$ ) and had shorter hospital stays ( $101 \pm 14$  vs.  $156 \pm 14$  days;  $p=0.002$ ). They showed a trend to reach full feedings earlier ( $54.42 \pm 5.64$  vs.  $81.86 \pm 6.17$  days,  $p=0.06$ ) with fewer days of feedings ( $39.82 \pm 5.2$  vs. 64.81 days,  $p=0.08$ ). The demographic and clinical characteristics of infants who survived vs. those who died are summarized in Table 3.

Linear regression for NEC-related mortality ( $r^2=0.56$ ,  $p=0.03$ ) identified several pre-surgical factors such as PDA ( $|t|=3.09$ ;  $p=0.005$ ), chorioamnionitis ( $|t|=2.77$ ;  $p=0.011$ ), and PIH ( $|t|=2.45$ ;  $p=0.023$ ). After surgery, the duration of paralytic ileus ( $|t|=3.03$ ;  $p=0.006$ ), days of starting ( $|t|=3.02$ ;  $p=0.006$ ) and reaching full feedings ( $|t|=2.7$ ;  $p=0.013$ ), and days of antibiotics ( $|t|=2.49$ ;  $p=0.02$ ) were important contributors. The prediction of mortality improved considerably ( $r^2=0.90$ ,  $p<0.001$ ) after including pathological data such as inflammation ( $|t|=3.33$ ;  $p=0.004$ ) and hemorrhages ( $|t|=6.24$ ;  $p<0.001$ ) in the resected intestine. In this combined model, post-operative ileus ( $|t|=6.82$ ,  $p<0.001$ ), day of starting enteral feedings ( $|t|=6.82$ ,  $p=0.014$ ), antenatal steroids ( $|t|=5.74$ ,  $p<0.001$ ), PIH ( $|t|=5.04$ ;  $p<0.001$ ), chorioamnionitis ( $|t|=2.72$ ,  $p=0.04$ ), outborn status ( $|t|=3.88$ ,  $p=0.001$ ), and the time of achievement of full feedings ( $|t|=2.24$ ,  $p=0.039$ ) remained important.

**LOS:** The average LOS was  $132.67 \pm 9.09$  days. Infants with higher gestational ages ( $r=-0.28$ ,  $p=0.008$ ) and birth weight ( $r=-0.29$ ,  $p=0.006$ ) needed fewer intensive care days. However, longer stays were needed for infants with higher chronological age at onset of NEC ( $r=0.35$ ,  $p=0.001$ ), those who needed PN for longer ( $r=0.38$ ,  $p<0.001$ ), or if they took longer to reach full feedings ( $r=0.53$ ,  $p<0.001$ ). Death was an important negative determinant ( $100.95 \pm 13.94$  days in those who died vs.  $155.85 \pm 10.92$  days in survivors,  $p=0.002$ ). Table 4 highlights the correlation between the LOS with major outcomes.

Linear regression for LOS ( $r^2=0.44$ ;  $p<0.001$ ) identified the contribution of the age of onset of NEC ( $|t|=4.75$ ;  $p<0.001$ ), mortality ( $|t|=4.14$ ;  $p<0.001$ ), gestational age ( $|t|=3.95$ ;  $p<0.001$ ), days of PN ( $|t|=3.72$ ;  $p<0.001$ ), and birth weight ( $|t|=2.79$ ;  $p=0.007$ ). Pathological factors improved the model ( $r^2=0.5$ ,  $p<0.001$ ); the new factors were the severity grade of NEC in the resected segment ( $|t|=2.2$ ;  $p=0.03$ ) and the depth of necrosis (percent) at the

resection edges ( $|t|=1.98$ ;  $p=0.05$ ). Trends were seen for associations with inflammation ( $p=0.064$ ).

**Severity of necrosis:** Bowel specimens from 17 infants showed clean, non-necrotic margins, compared to 73 patients with grade 2 lesions and  $29.3\pm 3\%$  necrosis at the margins ( $p<0.001$ ). The resection margins in the former group were less inflamed ( $12.4\pm 2.3\%$  vs.  $20.9\pm 1.4\%$ ;  $p=0.003$ ) and had fewer hemorrhages ( $14\pm 2.4\%$  vs.  $23.8\pm 1.3\%$ ,  $p<0.001$ ). Linear regression ( $r^2=0.1$ ,  $p=0.03$ ) identified clinical determinants such as gestational age ( $|t|=4.98$ ,  $p<0.001$ ), gender ( $|t|=2.27$ ,  $p=0.026$ ), and indomethacin use ( $|t|=2.31$ ,  $p=0.023$ ). The accuracy of these models increased upon the inclusion of pathology findings ( $r^2=0.79$ ,  $p<0.001$ ) such as necrosis (%) in the resection margins ( $|t|=17.32$ ,  $p<0.001$ ). The clinical determinants were gestational age ( $|t|=4.98$ ,  $p<0.001$ ) and gender ( $|t|=3.38$ ,  $p=0.001$ ).

**Length of resected bowel:** The length of the resected bowel increased from group A through group D. Linear regression identified several clinical determinants of this length of bowel resection, but the accuracy of these models was limited ( $r^2=0.16$ ,  $p=0.003$ ). The clinical determinants in these models included birth weight ( $|t|=3.56$ ,  $p<0.001$ ), PDA ( $|t|=2.76$ ,  $p=0.007$ ), and assisted ventilation ( $|t|=2.47$ ,  $p=0.016$ ). The accuracy of these models improved ( $r^2=0.35$ ,  $p<0.001$ ) when the depth of necrosis in the resection margins ( $|t|=4.22$ ,  $p<0.001$ ) was included. These combined models included the age at onset of NEC ( $|t|=2.52$ ,  $p=0.014$ ), PDA ( $|t|=3.27$ ,  $p=0.002$ ), region of resected bowel ( $|t|=4.39$ ,  $p=0.027$ ), and assisted ventilation ( $|t|=2.26$ ,  $p=0.027$ ).

## Discussion:

We studied a cohort of 90 infants with surgical NEC to examine the hypothesis that incomplete surgical removal of the necrosed bowel might predispose them to adverse outcomes due to continued systemic inflammation. We recorded their perinatal data, intra- and post-operative events, clinical course, and outcomes such as mortality and length of hospital stay, and correlated these data with the histopathological changes in the intestine. These infants had a clinical profile typical of NEC patients with a gestational age of approximately 27 weeks and a birth weight of 1000 g. The onset of NEC near postnatal day 25 was clinically typical with abdominal distension, feeding intolerance, and/or bloody stools. Post-operative ileus lasted for  $16.5\pm 1.3$  days, parenteral nutrition was given for  $91\pm 7$  days, feedings were started on  $17\pm 2$  days after surgery, and full feedings were achieved on  $82\pm 6$  days. Thirty-eight (42.2%) patients died. The average hospital stay was  $132.5\pm 9$  days.

We aimed to combine the clinical information of NEC patients with histopathological data from their surgically resected intestine, seeking to extend earlier attempts to connect the histopathology and outcomes of NEC (9, 10). The pathology specimens were first evaluated for the overall severity of NEC. The resection margins were then specifically examined to either confirm a clean resection, or alternatively, evaluated for signs of NEC such as necrosis, inflammation, hemorrhage, or reparative changes. In 17 infants, the necrotic bowel was resected cleanly with no NEC lesions seen in the resection margins. The other 73 infants showed notable necrosis and inflammation in the surgical margins. These infants had a considerably longer part of their bowel involved in NEC than those who had complete

resection with clean margins. The presence of superficial NEC lesions near the resection margins most likely reflect the surgeons' conscious efforts to salvage intestine that was not completely gangrenous. In premature infants, there may also have been some reluctance against the excision of bowel segments where necrosis/gangrene was not the certain diagnosis. Naked eye examination of the intestine may not be sufficient to identify segments with partial/focal hypoperfusion, thromboembolic foci, and transient ischemic-reperfusion injury even though such conditions could be considered in critically ill, older patients.

Finally, necrotic and inflammatory lesions may evolve differently in extremely premature intestine than in full-term infants. Both premature leukocytes and the intestine have known functional limitations, which may add a maturational component to the temporal evolution of NEC lesions and may need further study.

In the resected intestine, leukocyte infiltration and inflammatory changes seemed to become more prominent with increasing severity of necrosis, and this relationship remained consistent in the resection margins. As in earlier studies, inflammation correlated with hemorrhages (12). Antenatal steroids and chronological age may also have protected against inflammation (13). Interstitial hemorrhages followed a similar pattern, and were possibly related to maturational changes in the microvasculature (14). These hemorrhages seemed to have been associated with necrosis and inflammation, which can be explained by the microvascular damage that has been documented in NEC (14, 15). Another interesting variable was the reparative changes in the necrotic bowel segments (9, 10). These changes may have been more prominent in mild-moderate NEC than in severe disease. There is a need to understand the regulatory mechanisms involved in these reparative changes.

Infants who died of NEC were born at an earlier gestational age ( $26.11 \pm 0.48$  weeks *vs.*  $28.1 \pm 0.5$  weeks) and with less birth weight ( $862.76 \pm 52.48$  g *vs.*  $1120.39 \pm 70.41$  g) than the survivors. The loss of bowel in these infants during surgery was nearly a third more than those who survived ( $37.5 \pm 6.04$  *vs.*  $23.4 \pm 3.19$  cm). We also noted associations between death and longer paralytic ileus, difficulties with feeding, and infections. The prediction of mortality became highly accurate ( $r^2=0.90$ ,  $p<0.001$ ) with the addition of pathological data such as inflammation ( $p=0.004$ ) and hemorrhages ( $p<0.001$ ) in the resected intestine. Our data are consistent with previous reports that higher severity of necrosis may result in mortality (16, 17). The non-survivors may have higher inflammatory scores. In an earlier small study (10), we had noted a similar association between transmural necrosis in the resected intestinal margins and increased mortality. Out of 22 infants (N=33) studied, 6/8 (36.4%) had transmural necrosis and 6 of these 8 (75%) infants died. In contrast, only 4/14 (28.6%) of the infants who did not have transmural necrosis in surgical margins died ( $p=0.048$ ). A recent report by Eaton *et al.* (18) noted a modest inverse relationship between the histological severity of bowel necrosis and survival. They reported infants with fatal outcomes expressed high levels of the markers of apoptosis, not inflammation.

Our findings are similar to several past studies (19–25). Li *et al.* (21) noted that infants with earlier onset of NEC had achieved full feedings earlier (means  $\pm$  standard deviation  $18.1 \pm 11.5$  *vs.*  $26.3 \pm 15.6$  days,  $p=0.008$ ), had less mortality ( $p=0.026$ ), and showed a trend for fewer infections [19/53 (35.8%) *vs.* 29/53 (54.7%), confidence interval 0.212–1.008].



Sheng *et al.* (19) reported that the timing of NEC in preterm infants was inversely related to the gestational age, need for surgical procedures, and survival. In another study, Wright *et al.* (20) evaluated surgical NEC in 221 preterm neonates, where 182 (82%) underwent surgery in the operating room but 15 (8%) were too sick to be transported and were operated at the bedside. They noted high mortality rates, particularly in those who could not be transported to the operating room.

Our cohort showed a higher frequency of NEC in African American infants. Racial disparities in the incidence of NEC are known, but these ethnic differences need to be studied more comprehensively. The Pediatrix medical group recently reviewed the medical records of 126,089 infants (45% Caucasians, 27% African Americans, and 19% Latinos); NEC was noted in 8796 (7%) (26). Compared to Caucasian infants, NEC was significantly more frequent in African Americans (adjusted odds ratios (AOR) 1.31, 95% confidence interval (CI) [1.24–1.39] and Latinos (1.30 [1.21–1.39]). These African Americans and Latino infants also had higher mortality (AORs 1.35 [1.15–1.58] and 1.31 [1.09–1.56], respectively) than Caucasians. Further studies are needed to investigate these health disparities and possible interventions to improve these health outcomes.

The average LOS in our study was  $132.67 \pm 9.09$  days, and was shorter in more mature infants with higher gestational age and birth weight. In linear regression, gestational age, birth weight, age of onset of NEC, days of PN, and mortality were noted as important. The inclusion of pathological factors added to accuracy of the model by including the severity of NEC in the resected segment and the depth of necrosis (percent) at the resection edges. We noted better survival in NEC patients who had an average gestational age that was 3 weeks higher and birth weight that was higher by 250 g. These associations between maturity, illness, and survival are important (27). Both groups started enteral feedings at 16–17 days, but the survivors took a month longer to reach full feeding volumes and had longer hospitalizations. There was no difference in gender, ethnicity, clinical NEC, surgical complications, and short bowel syndrome. The effect of these demographic features and clinical practices on intestinal microflora remain unclear (10) but considering the increasing importance of microflora development in the causation of NEC (28–30), further study is needed to correlate these factors.

In our cohort, the length of resected bowel was a major indicator of clinical outcomes. The survivors lost less bowel than those who died (24 cm vs. 36 cm,  $p < 0.01$ ). The ileocecal region was affected in a majority, which is consistent with previous reports (10, 23). This region, particularly the ileum, is highly susceptible due to its low vascularity and high metabolic demands (31). Piglet studies show that the ileocecal region may be perfused at 40% lower levels than more proximal regions, and may be further compromised in lower birth weight animals with limited compensatory mechanisms (32–34). Studies conducted by the Eunice Kennedy Shriver National Institute of Child Health and Human Development have shown important associations between surgical NEC and SBS, with increased risk of neurodevelopmental abnormalities, repeated hospitalizations, and death (24).

Our investigations suggest that incomplete excision of the necrotic bowel may lead to inferior outcomes in surgical NEC. In current care-management models, the involved

surgeons, physicians, and service managers seek excision of the necrotic bowel in a procedure that is timely, feasible, and most likely to be tolerated by the critically ill infant. If findings in this report were to be confirmed, future studies may have to focus on the feasibility and costs of including pediatric pathology services in a procedure that is complex and usually emergent, but relatively infrequent at most centers. The easiest, most feasible solution may be to standardize the evaluation of frozen tissue sections for NEC in these infants. However, some exciting and potentially usable alternatives may also emerge from newer, semi-automated measurements of necrosis based on mass spectrometry, such as desorption electrospray ionization and imaging mass spectrometry (35, 36).

To conclude, we present novel clinical and pathological determinants of the outcomes in surgical NEC in this study. The limitations of this effort are its retrospective design, limited sample size, and single-center design, which increase the risk of bias. There is a need to validate these results in a larger, prospectively enrolled multi-centric cohort, which may also permit the inclusion of additional clinical/laboratory predictors in the statistical models (37–40). There is a need for continued evaluation of prognostic markers in infants with surgical NEC.

### Acknowledgement:

Dr. Neelesh Tipnis for helping us developing and reviewing the Manuscript.

**Funding:** National Institutes of Health awards HL124078 and HL133022 to AM

### References:

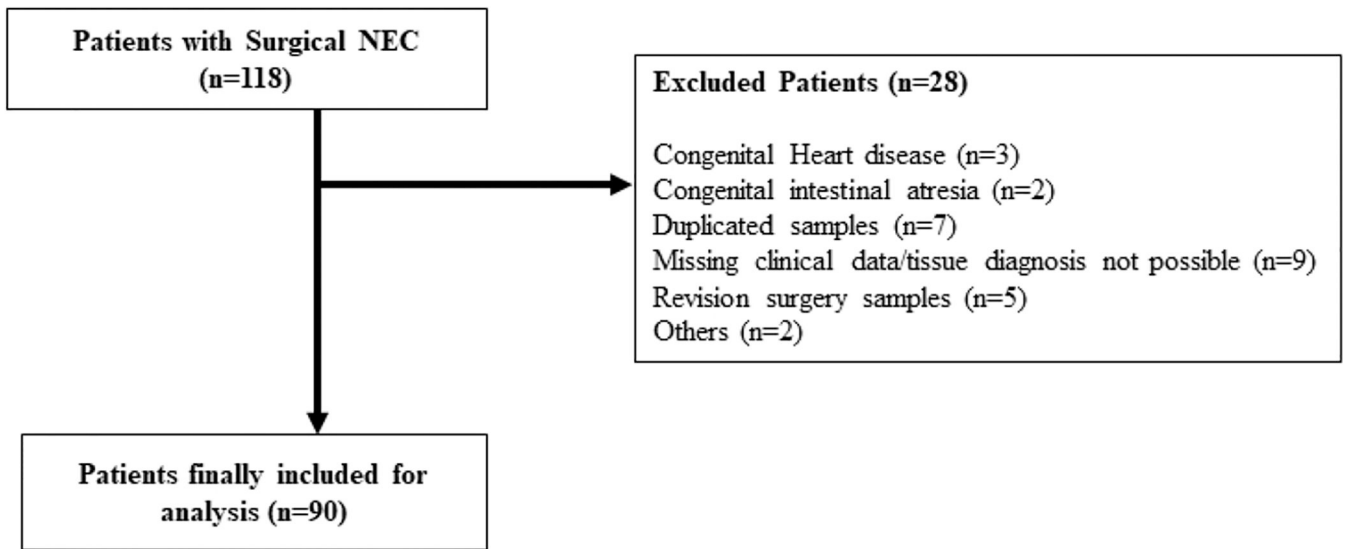
1. Neu J, Walker WA 2011 Necrotizing enterocolitis. *N Engl J Med* 364:255–264. [PubMed: 21247316]
2. Ho TBT et al. 2018 Dichotomous Development of the Gut Microbiome in Preterm Infants. *Microbiome* 6:157. [PubMed: 30208950]
3. Ho TBT et al. 2019 Enteric Dysbiosis and Fecal Calprotectin Expression in Premature Infants. *Pediatr Res* 85:361–368. [PubMed: 30631136]
4. Fundora JB, Guha P, Shores DR, Pammi M, Maheshwari A 2019 Intestinal dysbiosis and necrotizing enterocolitis: assessment for causality using Bradford Hill criteria. *Pediatr Res*.
5. MohanKumar K et al. 2016 Trinitrobenzene Sulfonic Acid-induced Intestinal Injury in Neonatal Mice Activates Transcriptional Networks Similar to those seen in Human Necrotizing Enterocolitis. *Pediatr Res* 81:99–112. [PubMed: 27656771]
6. MohanKumar K et al. 2012 Gut mucosal injury in neonates is marked by macrophage infiltration in contrast to pleomorphic infiltrates in adult: evidence from an animal model. *Am J Physiol Gastrointest Liver Physiol* 303:G93–102. [PubMed: 22538401]
7. Zhang C et al. 2012 Paneth cell ablation in the presence of *Klebsiella pneumoniae* induces necrotizing enterocolitis (NEC)-like injury in the small intestine of immature mice. *Dis Model Mech* 5:522–532. [PubMed: 22328592]
8. MohanKumar K et al. 2019 A Murine Neonatal Model of Necrotizing Enterocolitis Caused by Anemia and Red Blood Cell Transfusions. *Nat Commun*:in press.
9. Ballance WA, Dahms BB, Shenker N, Kliegman RM 1990 Pathology of neonatal necrotizing enterocolitis: a ten-year experience. *J Pediatr* 117:S6–13. [PubMed: 2362230]
10. Remon JI et al. 2015 Depth of bacterial invasion in resected intestinal tissue predicts mortality in surgical necrotizing enterocolitis. *J Perinatol* 35:755–762. [PubMed: 25950918]
11. Garg PM, Hitt MM, Blackshear C, Maheshwari A 2020 Clinical Determinants of Postoperative Outcomes in Neonates with Surgical Necrotizing Enterocolitis. *J Perinatol*:in review.

12. Bowker RM, Yan X, De Plaen IG 2018 Intestinal microcirculation and necrotizing enterocolitis: The vascular endothelial growth factor system. *Semin Fetal Neonatal Med* 23:411–415. [PubMed: 30213591]
13. Precioso AR, Proenca RS 2002 Necrotizing enterocolitis, pathogenesis and the protector effect of prenatal corticosteroids. *Rev Hosp Clin Fac Med Sao Paulo* 57:243–248. [PubMed: 12436182]
14. Gellen B et al. 2003 Vascular changes play a role in the pathogenesis of necrotizing enterocolitis in asphyxiated newborn pigs. *Pediatr Surg Int* 19:380–384. [PubMed: 12756598]
15. Yan X et al. 2016 Lack of VEGFR2 signaling causes maldevelopment of the intestinal microvasculature and facilitates necrotizing enterocolitis in neonatal mice. *Am J Physiol Gastrointest Liver Physiol* 310:G716–725. [PubMed: 26950855]
16. Mutanen A, Pierro A, Zani A 2018 Perioperative Complications Following Surgery for Necrotizing Enterocolitis. *Eur J Pediatr Surg* 28:148–151. [PubMed: 29534255]
17. Pierro A, Hall N 2003 Surgical treatments of infants with necrotizing enterocolitis. *Semin Neonatol* 8:223–232. [PubMed: 15001141]
18. Eaton S, Sebire N, Thyoka M, Pierro A 2014 Histologic and immunohistochemical features associated with outcome in neonatal necrotizing enterocolitis. *Eur J Pediatr Surg* 24:51–56. [PubMed: 23852721]
19. Sheng Q et al. 2016 Short-term surgical outcomes of preterm infants with necrotizing enterocolitis: A single-center experience. *Medicine (Baltimore)* 95:e4379. [PubMed: 27472729]
20. Wright NJ et al. 2014 The outcome of critically ill neonates undergoing laparotomy for necrotising enterocolitis in the neonatal intensive care unit: a 10-year review. *J Pediatr Surg* 49:1210–1214. [PubMed: 25092078]
21. Li X, Li L, Wang Y, Deng C, Guo C 2017 Postoperative characteristics of infants who developed necrotizing enterocolitis with different postnatal ages. *Medicine (Baltimore)* 96:e7774. [PubMed: 28796074]
22. Hau EM et al. 2019 Gastrointestinal sequelae after surgery for necrotising enterocolitis: a systematic review and meta-analysis. *Arch Dis Child Fetal Neonatal Ed* 104:F265–F273. [PubMed: 29945925]
23. Geng Q, Wang Y, Li L, Guo C 2018 Early postoperative outcomes of surgery for intestinal perforation in NEC based on intestinal location of disease. *Medicine (Baltimore)* 97:e12234. [PubMed: 30278493]
24. Cole CR, Hansen NI, Higgins RD, Ziegler TR, Stoll BJ, Eunice Kennedy Shriver NNRN 2008 Very low birth weight preterm infants with surgical short bowel syndrome: incidence, morbidity and mortality, and growth outcomes at 18 to 22 months. *Pediatrics* 122:e573–582. [PubMed: 18762491]
25. Blakely ML et al. 2005 Postoperative outcomes of extremely low birth-weight infants with necrotizing enterocolitis or isolated intestinal perforation: a prospective cohort study by the NICHD Neonatal Research Network. *Ann Surg* 241:984–989; discussion 989–994. [PubMed: 15912048]
26. Jammeh ML et al. 2018 Racial/ethnic differences in necrotizing enterocolitis incidence and outcomes in premature very low birth weight infants. *J Perinatol* 38:1386–1390. [PubMed: 30087454]
27. Stoll BJ et al. Eunice Kennedy Shriver National Institute of Child H, Human Development Neonatal Research N 2015 Trends in Care Practices, Morbidity, and Mortality of Extremely Preterm Neonates, 1993–2012. *JAMA* 314:1039–1051. [PubMed: 26348753]
28. Bell MJ, Feigin RD, Ternberg JL, Brotherton T 1978 Evaluation of gastrointestinal microflora in necrotizing enterocolitis. *J Pediatr* 92:589–592. [PubMed: 344848]
29. Gewolb IH, Schwalbe RS, Taciak VL, Harrison TS, Panigrahi P 1999 Stool microflora in extremely low birthweight infants. *Arch Dis Child Fetal Neonatal Ed* 80:F167–173. [PubMed: 10212075]
30. Smith B et al. 2012 Investigation of the early intestinal microflora in premature infants with/ without necrotizing enterocolitis using two different methods. *Pediatr Res* 71:115–120. [PubMed: 22289859]

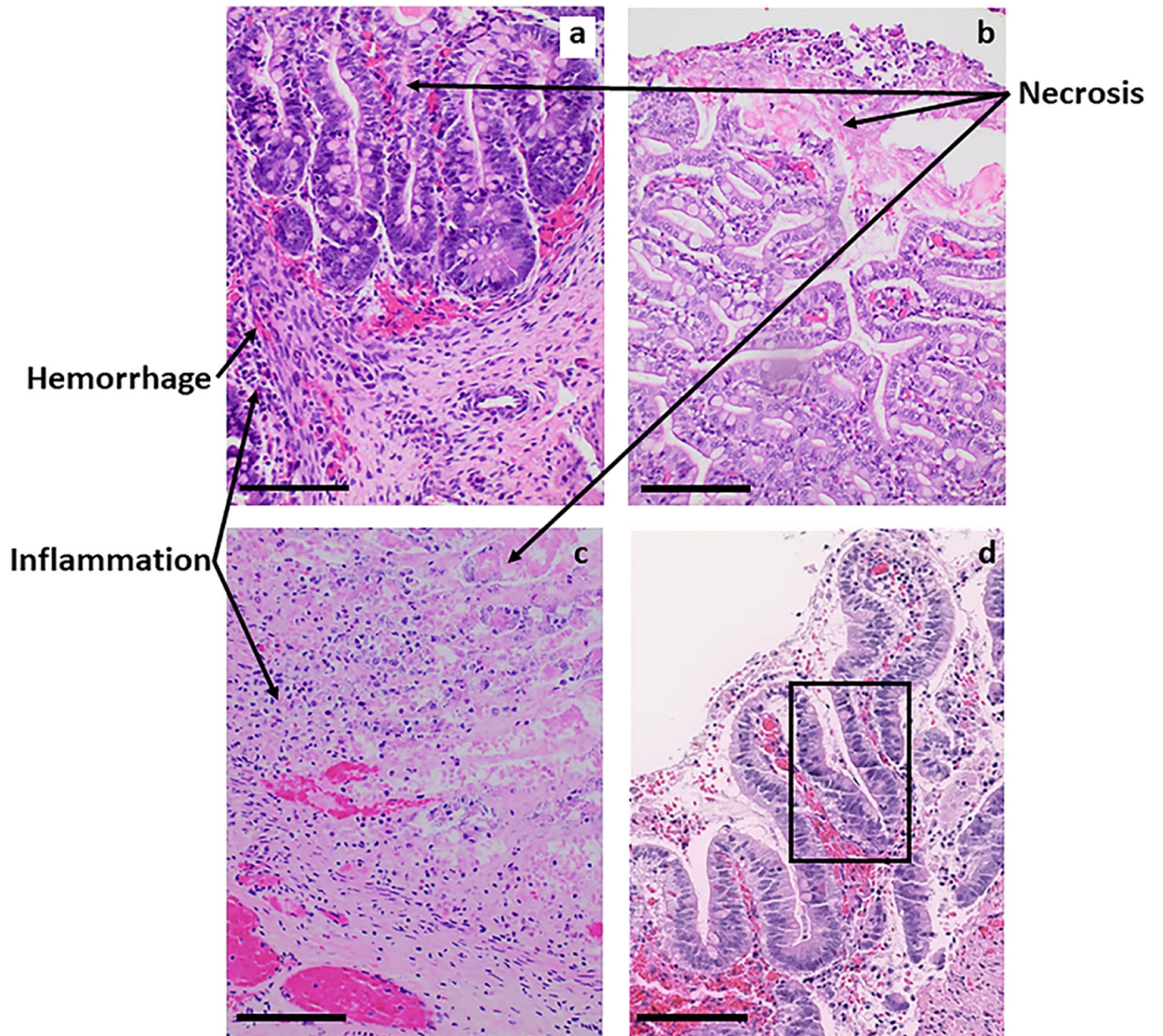
31. Watkins DJ, Besner GE 2013 The role of the intestinal microcirculation in necrotizing enterocolitis. *Semin Pediatr Surg* 22:83–87. [PubMed: 23611611]
32. Szabo JS, Mayfield SR, Oh W, Stonestreet BS 1987 Postprandial gastrointestinal blood flow and oxygen consumption: effects of hypoxemia in neonatal piglets. *Pediatr Res* 21:93–98. [PubMed: 3797137]
33. Nowicki PT et al. 2006 Intestinal O<sub>2</sub> consumption in necrotizing enterocolitis: role of nitric oxide. *Pediatr Res* 59:500–505. [PubMed: 16549519]
34. Nowicki PT, Stonestreet BS, Hansen NB, Yao AC, Oh W 1983 Gastrointestinal blood flow and oxygen consumption in awake newborn piglets: effect of feeding. *Am J Physiol* 245:G697–702. [PubMed: 6638194]
35. Fernandez R et al. 2016 Identification of Biomarkers of Necrosis in Xenografts Using Imaging Mass Spectrometry. *J Am Soc Mass Spectrom* 27:244–254. [PubMed: 26407555]
36. Tata A et al. 2016 Rapid Detection of Necrosis in Breast Cancer with Desorption Electrospray Ionization Mass Spectrometry. *Sci Rep* 6:35374. [PubMed: 27734938]
37. Andrews WW et al. 2006 The Alabama Preterm Birth study: polymorphonuclear and mononuclear cell placental infiltrations, other markers of inflammation, and outcomes in 23- to 32-week preterm newborn infants. *Am J Obstet Gynecol* 195:803–808. [PubMed: 16949415]
38. Dorling J, Kempley S, Leaf A 2005 Feeding growth restricted preterm infants with abnormal antenatal Doppler results. *Arch Dis Child Fetal Neonatal Ed* 90:F359–363. [PubMed: 16113150]
39. Venkatesh KK et al. 2019 Association of chorioamnionitis and its duration with neonatal morbidity and mortality. *J Perinatol*.
40. Peterslund P et al. 2019 Frequencies of Immune Cells in the Human Small Bowel During Normal Gestation and in Necrotizing Enterocolitis. *Fetal Pediatr Pathol*:1–14.

**Impact:**

- In infants with surgical NEC, complete resection of necrotic bowel reduced mortality and hospital stay.
- Regression models combining clinical and histopathological information were superior at predicting mortality and hospital stay than simpler models focusing on either of these two sets of data alone.
- Prediction of mortality improved with the combination of antenatal steroids, chorioamnionitis, and duration of post-operative ileus, with severity of inflammation and hemorrhages in resected intestine.
- Length of hospital stay was shorter in infants with higher gestational ages, but longer in those with greater depth of necrosis or needing prolonged parenteral nutrition or supervised feedings.



**Figure 1.**  
Flow diagram shows eligible 118, excluded 28, and enrolled 90 infants.



**Figure 2.** Hematoxylin and eosin-stained images (20x) of the small intestine resected from infants with NEC. These images show (a) less than 5% necrosis, 20% inflammation, and 30% hemorrhage; (b) fibrinous exudate, 15% necrosis, 20% inflammation, and congested vessels; (c) 70% necrosis, 40% inflammation, and 10% hemorrhage, and some vascular congestion. Panel (d) shows ileum resected from an infant with NEC. The rectangle is placed to highlight villus epithelial cells with regenerative changes. These cells show nuclear stratification and hyperchromasia, and amphophilic staining of the cytoplasm with both acid and basic dyes. Magnification bars = 150  $\mu$ m.

**Table 1.**

## Infant and maternal data

	<b>Overall</b>
	<b>90</b>
<b>Infant Demographics</b>	
Gestational age (weeks)	27.3±0.4
Birth weight (grams)	1008±48
Small for gestational age	14 (16%)
Male gender	56 (62.2%)
Ethnicity	
African American	80 (88.9%)
Caucasian	9 (10%)
Latino	1 (1%)
Cesarean section delivery	48 (54%)
Outborn	40 (44.4%)
<b>Maternal Factors</b>	
Pregnancy-induced hypertension	25 (28%)
Chorioamnionitis	5 (7%)
Antenatal steroids	44 (49%)
Maternal magnesium sulphate administration	24 (27%)

Data presented as mean ± SEM or n (%)

Author Manuscript

Author Manuscript

Author Manuscript

Author Manuscript



**Table 2.**

Clinical and pathological differences in groups A-D that were divided based on the severity of necrosis in resected margins

	Group A		Group B		Group C		Group D	
	Alive	Died	Alive	Died	Alive	Died	Alive	Died
<b>Number</b>	13 (76.47%)	4 (23.53%)	13 (44.83%)	16 (55.17%)*	16 (59.26%)	11 (40.74%)*	8 (53.33%)	7 (46.67%)
<b>Total bowel length (small and large) resected</b>	13.8±0.8	18.8±1.9	26.9±2.6	32.5±2.4*	25±1.1	47.7±3.6*	29.6±3.3	41.3±6.1*
<b>Large bowel part of resection</b>	11/13	1/4	8/13	11/16	4/16x	5/11x	1/8x	0/7x
<b>Necrosis %</b>	0±0	0±0	9.2±0.3*	9.1±0.2*	28.1±0.5*	27.3±1.1*	72.5±1.6*	67.1±2.3*
<b>Inflammation %</b>	13.5±0.7	8.8±2.1	18.5±0.6	21.9±0.9	24.2±0.7	20.5±0.9	20.6±2.1	15.7±0.8
<b>Hemorrhages %</b>	15.8±0.8	8.8±2.1	22.7±0.7	25±0.9	24.4±0.7	21.8±1	26.3±1.3	21.4±1
<b>Reparative changes %</b>	6.2±0.9	0±0	3.1±0.5	9.4±0.9	2.2±0.2	0.9±0.3	0±0	0±0
<b>Gestational age</b>	28±0.3	28±0.2	31.9±1.1	30.8±0.2	29±0.6	25.4±0.1	28±0.2	26.7±0.4
<b>Birth weight</b>	1094±23	805±101	1069±32	771±65	1091±63	983±127	1140±34	916±124
<b>Outborn</b>	10/13	3/4	8/13	5/16	10/16	4/11x	2/8x	3/7x
<b>SGA</b>	1/13	1/4	3/13	3/16	3/16	2/11x	1/8x	1/7x
<b>Male gender</b>	5/13	3/4	6/13	4/16	12/16	4/11x	5/8x	3/7x
<b>African American</b>	11/13	4/4	11/13	14/16	17/16	10/11x	8/8x	7/7x
<b>PIH</b>	2/13	1/4	5/13	4/16	6/16	6/11x	4/8x	3/7x
<b>Chorioamnionitis</b>	0/13	0/4	0/13	0/16	1/16	0/11x	0/8x	0/7x
<b>Antenatal steroids</b>	7/13	0/4	9/13	8/16	10/16	4/11x	3/8x	3/7x
<b>Vaginal delivery</b>	7/13	2/4	10/13	9/16	7/16	4/11x	4/8x	5/7x
<b>5 min Apgar &lt;6</b>	1/13	0/4	2/13	6/16	3/16	1/11x	1/8x	2/7x
<b>PDA</b>	5/13	3/4	4/13	11/16	6/16	5/11x	3/8x	3/7x
<b>Indomethacin Use</b>	0±0	0±0	0.3±0	0.2±0	0.3±0	0.2±0	3/8x	2/7x
<b>PDA Surgical ligation</b>	2/13	0/4	0	0	0	0	0/8x	0/7x
<b>Assisted Ventilation</b>	13/13	3/4	11/13	14/16	15/16	9/11	5/8x	4/7x
<b>NEC age onset</b>	20.3±1.3	37.6±5.6 <sup>##</sup>	27.3±0.7	34.1±0.7 <sup>##</sup>	20.4±1.4	16.8±2.6	24±1.7	19.7±0.6
<b>Feeding intolerance or bloody stools besides abdominal distention</b>	1/13	1/4	2/13	2/16	1/16x	1/11x	0/8	0/7
<b>Need for pressors 24h after NEC onset</b>	8/13	2/4	7/13	9/16	14/16x	9/11x	3/8x	3/7
<b>Antibiotic days</b>	10.4±0.4	8±1	11±0.2	9.9±0.4	14.3±0.7	10.1±0.4	8.8±0.1	12.3±1.6
<b>Post-operative ileus</b>	23.6±1.7	14.3±2.1	17.1±0.7	13.3±0.4	14±0.5	18.8±1.4	12.8±0.6*	17.3±1.9

	<i>Group A</i>		<i>Group B</i>		<i>Group C</i>		<i>Group D</i>	
	<i>Alive</i>	<i>Died</i>	<i>Alive</i>	<i>Died</i>	<i>Alive</i>	<i>Died</i>	<i>Alive</i>	<i>Died</i>
<b>TPN days</b>	111.4±4.5	75.3±18.3 <sup>#</sup>	84.1±3.9	70.7±2.7	82.6±2.2	102.6±6.7	72.7±5 <sup>*</sup>	84.8±6.6
<b>Day start feeds</b>	23.6±1.7	14.3±2.1 <sup>#</sup>	17.1±0.7	13.4±0.4 <sup>*</sup>	14.6±0.5	19.6±1.5 <sup>#</sup>	12.8±0.6 <sup>*</sup>	20.4±1.8 <sup>#</sup>
<b>Days to full feeds</b>	110.9±3.9	42.7±10.2 <sup>#</sup>	74.7±3.8	49.5±2.3 <sup>#</sup>	76.9±2.2	76±3.8	73.4±5.5	72.1±4
<b>Length hospital stay</b>	208±6.7	196±23	158.2±7.4	101.6±4.6 <sup>#</sup>	143.7±3.2	103.3±10 <sup>#</sup>	153.8±12	59±6.7 <sup>#</sup>

<sup>\*</sup>  $p < 0.05$  vs. grade A;

<sup>#</sup>  $p < 0.05$  vs. other subgroups.

Author Manuscript

Author Manuscript

Author Manuscript

Author Manuscript

**Table 3.**

Clinical and pathological differences in infants who survived *vs.* those who died from NEC. The third column shows the p-values. Emboldened script highlights a significant difference ( $p < 0.05$ ).

	<b>Survivors</b>	<b>Deaths</b>	<b>p-value</b>
<b>Gestational age</b>	<b>28.09±0.5</b>	<b>26.11±0.48</b>	<b>0.007</b>
<b>Birth weight</b>	<b>1120.39±70.41</b>	<b>862.76±52.48</b>	<b>0.008</b>
<b>Age at NEC onset</b>	<b>23.28±2.63</b>	<b>27.7±4.26</b>	<b>0.026</b>
Post-operative ileus	16.85±1.8	15.97±1.79	0.77
Days of TPN	88.51±6.17	83.7±9.06	0.7
<b>Days to full feeds</b>	<b>81.86±6.17</b>	<b>54.42±5.65</b>	<b>0.06</b>
Day of starting feeds	17.07±1.8	16.67±1.79	0.89
Antibiotic days	11.92±1.14	10.21±1.08	0.37
<b>Necrosis</b>	<b>1.75±0.17</b>	<b>1.84±0.2</b>	<b>0.03</b>
Necrosis %	23.56±3.49	24.08±3.91	0.92
Inflammation	2.62±0.12	2.84±0.11	0.1
Inflammation %	19.52±3.49	18.95±1.81	0.81
Hemorrhage	3.29±0.19	3.55±0.11	0.83
Hemorrhage %	22.12±1.64	21.71±1.97	0.076
Reparative changes	0.39±0.12	0.79±0.2	0.43
Reparative changes %	3.08±0.95	4.21±1.7	0.441
<b>Length of stay</b>	<b>155.85±10.92</b>	<b>100.95±13.94</b>	<b>0.002</b>

**Table 4.**

Correlation of LOS with gestational age, birth weight, age at onset of NEC, length of bowel resected, and death. Emboldened script indicates a significant change ( $p < 0.05$ ).

	LOS	Gestational age	Birth weight	NEC age onset	Length of bowel resection	Death
LOS		<b>-0.276 (<math>p=0.009</math>)</b>	<b>-0.29 (<math>p=0.006</math>)</b>	<b>0.347 (<math>p&lt;0.001</math>)</b>	-0.118	<b>-0.316 (<math>p=0.002</math>)</b>
Death	<b>-0.316 (<math>p=0.002</math>)</b>	<b>-0.284 (<math>p=0.007</math>)</b>	<b>-0.282 (<math>p=0.008</math>)</b>	0.098	<b>0.222 (<math>p=0.035</math>)</b>	
Gestational age	<b>-0.276 (<math>p=0.008</math>)</b>		<b>0.886 (<math>p&lt;0.001</math>)</b>	<b>-0.318 (<math>p=0.003</math>)</b>	0.144	<b>-0.284 (<math>p=0.007</math>)</b>
Birth weight	<b>-0.29 (<math>p=0.006</math>)</b>	<b>0.886 (<math>p&lt;0.001</math>)</b>		<b>-0.266 (<math>p=0.015</math>)</b>	0.169	<b>-0.282 (<math>p=0.008</math>)</b>
NEC age Onset	<b>0.347 (<math>p&lt;0.001</math>)</b>	<b>-0.318 (<math>p=0.003</math>)</b>	<b>-0.266 (<math>p=0.014</math>)</b>		0.065	0.098
Length of bowel resection	-0.118	0.144	0.169	0.065		0.222