

A Prospective, Randomized, Blinded, Placebo-Controlled Pilot Study on the Effect of *Enterococcus faecium* on Clinical Activity and Intestinal Gene Expression in Canine Food-Responsive Chronic Enteropathy

S. Schmitz, B. Glanemann, O.A. Garden, H. Brooks, Y.M. Chang, D. Werling, and K. Allenspach

Background: Canine chronic enteropathies (CE) are believed to be caused by an aberrant immune response towards the intestinal microbiome. Administration of probiotics can alleviate colitis in people. In vitro effects of the probiotic *Enterococcus faecium* NCIMB 10415 E1707 (EF) previously have been evaluated using canine cells (e.g., whole blood, intestinal biopsies), but data on in vivo efficacy are lacking.

Hypothesis/Objectives: Administration of EF to dogs with food-responsive CE will improve clinical outcome and decrease the intestinal inflammatory profile.

Animals: Dogs diagnosed with CE were prospectively recruited to receive a hydrolyzed elimination diet plus either a synbiotic product containing EF or placebo for 6 weeks. Both veterinary staff and owners were blinded to the treatment.

Methods: Clinical severity index (CCECAI), clinicopathological data and gene expression using intestinal biopsies (TLR2/4/5/9, IL-17A, IL-22, IL-23p19, RORC, IL-2, IL-12p35, TNF α , IL-4, IFN γ , IL-10, TGF β , IL-1 β , IL-18, NLRP3, casp-1, TFF1, TFF3 and PPAR γ) before and after 6 weeks of treatment were analyzed using linear mixed modeling.

Results: Of the 45 cases recruited, 12 finished the clinical trial. Seven received the synbiotic and 5 the placebo product. There was no difference between groups or treatments regarding clinical efficacy, histology scores or expression of any of the investigated genes.

Conclusions and clinical importance: Standard dietary treatment induced rapid clinical response in all cases. Because the study was underpowered, it was not possible to determine whether or not EF had an additional effect within the time period of 6 weeks.

Key words: diarrhea; dog; inflammatory bowel disease; probiotics.

Canine chronic enteropathies (CE) are a group of inflammatory intestinal diseases of unknown cause.^{1,2} They usually are defined by response to treatment as food-responsive disease (FRD), antibiotic-responsive disease (ARD) and (idiopathic) inflammatory bowel disease (IBD), with the latter also being termed steroid-responsive disease (SRD).^{2,3} All of these syndromes manifest in variable degrees and combinations of gastrointestinal signs (e.g., diarrhea, vomiting, weight loss, changes in appetite).

Because microbiome changes are consistently found in dogs with CE,^{4–6} modification of the intestinal

From the Department of Clinical Sciences and Services, (Schmitz, Glanemann, Garden, Allenspach); Department of Pathology and Pathogen Biology, (Brooks, Werling); and the Research Support Office, Royal Veterinary College, University of London, North Mymms, Hertfordshire, UK (Chang).

The work presented in this manuscript was performed at the Royal Veterinary College, London, UK.

This paper was presented at the ECVIM Congress 2013 in Liverpool, UK.

Corresponding author: Silke Schmitz, Small Animal Hospital, Department Internal Medicine, Justus-Liebig University, Frankfurter Str. 126, 35392, Giessen, Germany; e-mail: Silke.Schmitz@vetmed.uni-giessen.de

Submitted September 18, 2014; Revised January 7, 2015; Accepted January 28, 2015.

© 2015 The Authors. Journal of Veterinary Internal Medicine published by Wiley Periodicals, Inc. on behalf of the American College of Veterinary Internal Medicine.

This is an open access article under the terms of the Creative Commons Attribution-NonCommercial License, which permits use, distribution and reproduction in any medium, provided the original work is properly cited and is not used for commercial purposes.

DOI: 10.1111/jvim.12563

Abbreviations:

ACTH	adrenocorticotrophic hormone
ARD	antibiotic-responsive disease
ASPA	animal scientific procedure act of the United Kingdom
casp-1	caspase 1
CCECAI	canine chronic enteropathy clinical activity index
CE	chronic enteropathy
cPL	canine pancreatic lipase
EF	enterococcus faecium
FOS	fructo-oligosaccharides
FoxP3	forkhead-box protein 3
FRD	food-responsive disease
GIT	gastrointestinal tract
IFN γ	interferon gamma
IL	interleukin
MAPK	mitogen-activated pyruvate kinase
NF κ B	nuclear factor kappa B
NLRP3	nod-like receptor with pyrin domain 3
PI3K	phosphatidylinositol 3 kinase
PPAR γ	peroxisome proliferator-activated receptor gamma
PRR	pathogen-recognition receptor
qPCR	quantitative reverse-transcription real-time polymerase chain reaction
RIN	RNA integrity number
RORC	retinoic acid receptor-related orphan receptor C
RVC	Royal Veterinary College, London, United Kingdom
SRD	steroid-responsive disease
TFF	trefoil factor
TGF β	transforming-growth factor beta
Th cells	T helper lymphocyte cells
TLI	trypsin-like immunoreactivity
TLR	toll-like receptor
TNF α	tumor-necrosis factor alpha
Tregs	regulatory T-lymphocytes
WSAVA	World Small Animal Veterinary Association

microbiome in the form of pre- and pro-biotics seems to be an interesting treatment option. Several studies have shown that probiotics can influence key biological signaling pathways in immune cells such as NFκB, MAPK, Akt/PI3K and PPARγ.^{7–11} In humans with IBD and mice with experimental colitis, respectively, administration of probiotics has been shown to alleviate intestinal inflammation, prevent relapse or both by induction of a more tolerant microenvironment.^{12–14}

Knowledge about the usefulness of probiotics in CE in dogs is limited. Only two studies have evaluated the *in vivo* effect of probiotics in dogs with chronic gastrointestinal diseases.^{15,16} One used a combination of different lactobacilli in dogs with FRD compared to placebo (diet only),¹⁵ the other a commercially available product for humans, which contains eight different strains of bacteria (lactobacilli, bifidobacteria, streptococci) in comparison to a combination treatment consisting of metronidazole and prednisolone.¹⁶ In the FRD study, all dogs improved clinically after treatment, but intestinal mucosal cytokine patterns were not correlated with clinical outcome or probiotic supplementation. In the second study, all dogs also improved clinically, but only in the group treated with probiotics was an increase in FoxP3 positive regulatory T-lymphocytes (Tregs) as well as an increase in the supposedly protective *Faecalibacterium prausnitzii* in fecal samples observed.^{5,17}

Enterococcus faecium NCIMB 10415 E1707 (EF) is commercially available as a probiotic or synbiotic for small animals both in Europe and in the USA (the US strain is SF68). The strain has shown good properties regarding survival in the upper gastrointestinal tract (GIT),¹⁸ adhesion to canine intestinal mucus and persistence in fecal samples,¹⁹ but has not been tested extensively for its immunomodulatory functions. No information regarding the efficacy of this specific probiotic in dogs with CE is available.

The aim of the present work was to assess the clinical benefit (as measured by the canine chronic enteropathy clinical activity index CCECAI¹) of treatment with a synbiotic product (containing EF)^a in dogs with FRD. In addition, selected clinicopathological data, intestinal endoscopic and histology scores and mucosal gene expression for a variety of genes associated with microbial recognition and modulation of the immune system in the intestine were investigated before and

after treatment to assess if EF can induce a more anti-inflammatory environment.

Materials and Methods

Conduct of a Prospective, Blinded, Placebo-Controlled Clinical Trial

Ethical Approvals and Products Used. The clinical trial was approved by the RVC's Ethics and Welfare Committee (ASPA number 70/7393) and conducted between June 2010 and May 2013. The synbiotic used contained 1×10^9 cfu EF NCIMB 10415 E1707, FOS and gum Arabic^a. The placebo consisted of an identical capsule containing maltodextran.

Inclusion and Exclusion Criteria. Dogs with a history typical for chronic enteropathy (≥ 3 weeks of vomiting, diarrhea or both, with or without weight loss) were included. The diagnosis of chronic enteropathy was confirmed based on established criteria (no clinically relevant abnormalities on routine hematology, serum biochemistry; trypsin-like immunoreactivity [TLI], canine pancreatic lipase [cPL] and adrenocorticotrophic hormone [ACTH]-stimulation test results within the reference range; no abnormalities on abdominal imaging [radiographs, abdominal ultrasound examination or both]). Histopathologic findings of intestinal mucosal biopsies had to show lymphoplasmacytic, eosinophilic or mixed inflammation with or without architectural changes.^{20,21} Exclusion criteria were the presence of concurrent diseases or treatment with antimicrobials, anti-inflammatory drugs or both 7 days before presentation.

Study Design. Dogs were seen at three separate visits: visit 1 (recruitment), visit 2 (14 ± 3 days after starting the trial medication) and visit 3 (42 ± 3 days after starting the trial medication; see Fig 1). The procedures performed at each visit are listed in Table 1. Patients were randomized (using random permuted blocks of $n = 12$ that had been designed before the start of the study^b) to receive either the synbiotic EF product or placebo in conjunction with a hydrolyzed protein diet^c. All members of staff involved in the trial (apart from the study monitor, a head nurse) were blinded to the dogs' medications.

Assessment of Clinical Severity. Clinical severity was assessed using the CCECAI at all three visits.¹

Endoscopy and Endoscopic Scoring of Lesions

Gastroduodenoscopy and colonoscopy were performed in all dogs according to standard procedures. Macroscopic endoscopic scoring was performed using the World Small Animal Veterinary Association (WSAVA) approved endoscopic examination report.²⁰ Multiple biopsies (15–20) from the duodenum and colon were taken with a single-use endoscopic biopsy forceps, and 10–15 from each site were transferred immediately into 2% neutral-buffered formalin. The remaining biopsies (minimum of 2) were transferred

Table 1. Outline and procedures for each dog at each visit of the clinical trial.

Visit	History	PE	CCECAI	CBC/BC	UA	TLI/cPLI	Folate/ cobalamin	ACTH stim	Faecal	Endoscopy and biopsy
1	X	X	X	X	X	X	X	X	X	X
2	X	X	X	Only albumin						
3	X	X	X	X						X

Visit 1 = before start of treatment, visit 2 = 2 weeks after start of treatment for food-responsive chronic enteropathy with either *Enterococcus faecium* or placebo, visit 3 = 6 weeks after start of treatment. PE, physical exam; CCECAI, canine chronic enteropathy clinical activity index; CBC, complete blood count; BC, serum biochemistry; UA, urinalysis; ACTH stim, adrenocorticotropin stimulation test; faecal, faecal flotation/sedimentation.

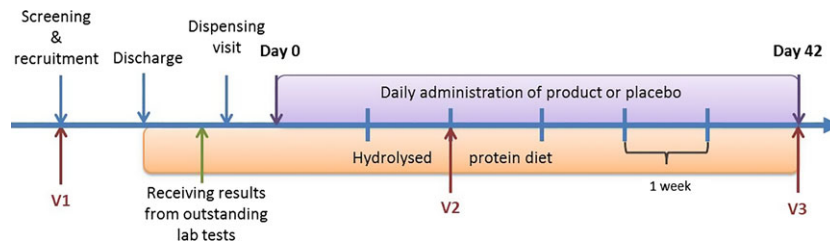


Fig 1. Outline of the clinical trial. Dogs were seen at three separate visits: Visit (V) 1 = recruitment and diagnosis, V2 = after 2 weeks of treatment with either *Enterococcus faecium* or placebo, V3 = after 6 weeks of treatment. During the duration of the trial dogs were all fed the same hydrolysed protein diet.

to RNAlater^d, stored at 4°C for 24 h and then at -80°C until further processing.

Histopathology

Initial histopathological assessment was performed at the pathology department of the RVC as part of the routine diagnostic procedure. After finalizing the study, all slides were reviewed by 1 of the authors (HB), and WSAVA standardized classification was applied to all slides.^{20,21} As described previously,²² 9 histologic variables, five representing morphological changes and four representing inflammatory changes were scored as absent = 0, mild = 1, moderate = 2, or severe = 3 according to the WSAVA guidelines.^{20,21} The total histology score was recorded. At this stage of histologic analysis, HB was blinded to original diagnosis, visit number and treatment group.

Gene Expression from Intestinal Tissues

RNA Extraction and cDNA Synthesis. A single biopsy stored in RNAlater was thawed and homogenized in lysis buffer^e using 5 mm stainless steel beads^e and a tissue grinder^f. Total RNA was extracted using a commercial kit^g including an on-column DNase treatment, and eluted in 30 µL nuclease-free water. RNA quantity and quality was assessed using an automated analyzer^h. Reverse transcription of 1 µg of RNA was performed with a cDNA synthesis kitⁱ, which uses a mixture of oligo-dT and random nonamer primers.

Generation of Positive Controls and Selection of Reference Genes. Canine sequences for the genes of interest and reference genes were cloned as described before.²³ Primers were designed based on publicly available gene sequences (Genbank, ENSEMBL) using the Primer3 software (see Table 2).²⁴ A total of 16 genes were assessed for stability using suitable software^j with a commercially available canine reference gene array^k. Based on these data, four reference genes were selected for canine duodenum and five for the colon, respectively (Table 2). Primers were optimized using standard PCR^l. Amplicons were visualized on a 1.5% agarose gel, purified^m and cloned into a holding vectorⁿ for subsequent sequencing^o and for qPCR standards (see below).

Quantitative Polymerase Chain Reaction. qPCR reactions were carried out in triplicate at a total reaction volume of 20 µL, using a commercially available reagent mix^p and a primer concentration of 200 nM. Cycling steps were: 95°C for 5 min, then 40 cycles of 94°C for 15 s, 55°C for 10 s, 72°C for 10 s and 80°C for 5 s. Reaction efficiency was determined using 10-fold dilutions (10⁷ molecules µL⁻¹ to 10¹ molecules µL⁻¹) of plasmids containing the cloned amplicon. Melting curves were generated to ensure a single amplicon had been produced. Averaged gene expression data for each sample were normalized against the geometric mean of the reference genes.²⁵

Genes of Interest. Several genes of the innate immune system interacting with bacteria (Toll-like receptors^{26,27} [TLRs] 2,4,5, and 9 as well as components of the inflammasome,²⁸ NLRP3, casp-1, interleukin [IL]-1β and IL-18) and the adaptive immune response in the intestine were investigated. For the latter, several signature cytokines and transcription factors of different T helper lymphocyte (Th) cell lines were assessed. These included Th17 cells (IL-17A, IL-22, IL-23p40, RORC),^{29,30} Th1 cells (IL-12p35, IL-2, TNFα), Th2 cells (IFNγ and IL-4,³¹ and Tregs (IL-10 and TGFβ).³²

Expression of the so-called trefoil factors (TFF), genes associated with epithelial barrier function and repair,³³ also was assessed. The nuclear receptor PPARγ, usually responsible for blocking the transcription of inflammatory cytokines³⁴ and supposedly especially up-regulated in intestinal epithelial cells by enterococci,³⁵ was investigated additionally.

Dendrograms and Heatmaps from Gene Expression Data

To facilitate visualization of gene expression data and changes in gene expression among visits of the clinical trial, heatmaps were created using a statistical package^q.

Statistical Analyses

Power Calculation. Clinical severity (as assessed by CCECAI) was selected as the primary outcome measure. Calculations were based on a type I error of 0.05 and a type II error of 0.1, which corresponds to a power of 90%. When assuming a difference (delta, Δ) of 1.5 times the sd (σ) to be medically relevant, the necessary number of animals in each group (treatment versus placebo) was determined to be n = 11.

Analysis of Clinicopathological, Histological and Gene Expression Data. Statistical analysis was performed using 2 commercially available software packages^{r,s}. Normal distribution was assessed by inspection of histograms or D'Agostino and Pearson omnibus normality test. Subsequently, either parametric or non-parametric tests were performed: A repeated measures model was used to assess the effect of the treatment interval (before versus after 6 weeks of treatment) and treatment type (EF versus placebo). Kruskal-Wallis or *t*-tests were performed to compare clinical and clinicopathological data, endoscopy and histology scores on visit 1 between treatment groups. Significance was set at *P* < 0.05.

Results

Patients. A total of 51 possible cases were identified, 45 cases were recruited, and 28 completed visit 1. The remaining 17 dogs dropped out for several reasons: Owners changing their mind about participation in the study without giving specific reasons (n = 5), owners not wanting endoscopy performed (n = 3), additional

Table 2. List of genes investigated by quantitative reverse-transcriptase real-time PCR with the respective primers used.

Gene	product size	Forward primer	Reverse primer	Annealing temp	Accession number
Casp-1	253	CGACAGACAGCTGGACACAT	ATCTGGGCTTTCACATCTGG	55	NM_001003125.1
FoxP3	550	TGG TGC AGT CTC TGG AAC AG	GGC CTT TGG CTT CTC TTC TT	60	NM_001168461.1
IFNy	353	TTCAGCTTTGCGTGATTTTG	CTGCAGATCGTTCACAGGAA	54.3	NM_001003174.1
IL-10	300	TCTGTTGCTGCCTGGTCCT	TGATGTCTGGGTCGTGGTT	54.3	NM_001003077.1
IL-12p35	102	ATGACGGTCTGTGCCCTTAG	CTGCCTCTTGGGATCCATTA	55	NM_001003293.1
IL-17A	166	CCGATCTACCTCACCTTGGA	TCGCAGAACCAGGATCTCTT	60.2	NM_001165878.1
IL-18	240	GAG GAT ATG CCC GAT TCT GA	ATC ATG GCC TGG AAC ACT TC	55	NM_001003169.1
IL-1 β	440	GCA GTA CCC GAA CTC ACC AG	ACA TTT TCC CCA TTG AGG TG	55	NM_001037971.1
IL-2	243	TCGCACTGACGCTTGTACTT	GCACTTCCTCCAGGTTTTTG	58.4	NM_001003305.1
IL-22	254	TCCAGCAGCCCTATATCACC	TTGGCTTAGCTTGTGCTGA	60.2	XM_538274.2
IL-23p19	198	ATGGGACATGTGGACCTACC	TAGAGAAGGCTCCCCGTGTA	55	XM_538231.3
IL-4	289	CTCACCTCCCAACTGATTCC	TGCTGCTGAGGTTCTGTAG	56.4	NM_001003159.1
NLRP3	207	GCA ATG CTC TTG GAG ACA CA	AGA GCA GCA TGA CCC CTA GA	55	XM_843284.2
PPAR γ	413	GGATTTCTCCAGCATTTCCA	TATGAGACATCCCCACAGCA	59	NM_001024632.2
RORC	289	TGATGGAGACTGAGCACCTG	ACCAGAACCATTCCATTGC	55	XM_540323.3
TFF1	161	GGA GCA CAG GGT GAT CTA CG	AAC AGC AGC CCT TGT CCT TA	55	NM_001002992.1
TFF3	105	ACGAACCTGTGCGAGGTG	GATGCTGGAGTCGAGCAG	55	NM_001002990.1
TGF β	609	GCATGTGGAGCTGTACCAGA	TAGTACACGATGGGCAGTGG	55	NM_001003309.1
TLR2	263	AGTGGCCAGAAAAGCTGAAA	ATCCAGTTGCTCCTTCGAGA	54.3	NM_001005264.2
TLR4	200	ATTCCTTCCGGACAACCTCC	CTGGAGGGAGAGGAGAGGTT	54.3	NM_001002950.2
TLR5	100	TGGGCGAGCTCTATGACTCT	CTGAACGTTCTGGTCTGGAT	55	NM_001197176.1
TLR9	327	GCCTGGAGTACCTGCTCTTG	AGGCTTTGGTTTTGGTGATG	55	NM_001002998.1
TNF α	715	TTCTGCCTCAGCCTCTTCTC	GCCCTGAGCCCTTAATTCTC	60.2	NM_001003244.4
GAPDH ^a	194	GGAGAAAGCTGCCAAATATG	ACCAGGAAATGAGCTTGACA	55	NM_001003142.1
GUSB ^a	140	CATGCTGGTCCAGAGCTACA	CAGGCTTCAGGAAGGAAGTG	55	NM_001003191.1
HMBS ^a	112	TCACCATCGGAGCCATCT	GTCCCAACCACGCTCTTC	54	XM_546491.3
PPIA ^a	159	GGGGAGAAGTTTGATGACGA	GACCTTGCCAAAGACCACAT	55	XM_532723.3
RPL32 ^a	186	CCTCAGACCTCTGGTGAAGC	TTCTTGTGCTCCCGTAACC	55	NM_001252169.1
SDHA ^a	412	GGACAGAGCCTCAAGTTTGG	GGCATCCTTCCGTAATGA	56.3	XM_535807.3
TBP ^a	267	GGGACCGCAGCAGACTACTA	GCCATAAGGCATCATTGGAC	60	XM_849432.2
ATP5B ^b	196	AGCCCATGGTGGTTACTCTG	GGCAACAGTCAGTCCAGTCA	55	XM_531639.3
B2M ^b	99	ACGGAAAGGAGATGAAAAGCA	CCTGCTCATTGGGAGTGAA	56	XM_003640047.1
HMBS ^b	112	TCACCATCGGAGCCATCT	GTTCCCAACCACGCTCTTC	54	XM_546491.3
PLA2R1 ^b	231	GAAGCCAGCAATGTGTCTCA	TCACAAGTGACGAGGACAG	55	XM_545489.3
YES ^b	192	GTCTTTCATGACGCCATTT	TTTGAACCGTTACCCTTC	55	NM_001003239.1

^aReference genes for the duodenum.^bReference genes for the colon.

medical problems were discovered before endoscopy was performed (n = 3), with 1 dog developing pronounced neurological symptoms that were deemed more important than the chronic GIT signs, 1 dog collapsing after sedation for abdominal ultrasound examination and 1 dog being diagnosed with concurrent hypothyroidism, identification of other diseases causing the GIT signs (n = 2, with 1 dog having metastatic gastric carcinoma and the other a pyloric sarcoma), owners not wanting to complete a 6-weeks food trial (n = 2), owners wanting to perform a food trial before endoscopy (n = 1) and 1 dog that had an aggressive temperament. Of the remaining 28 dogs, 16 were withdrawn after visit 1 and did not complete the study. Reasons were: failure to respond to dietary treatment (n = 6), owner not

wishing to continue with the study without giving specific reasons (n = 4), owner objecting to a second endoscopy procedure (n = 2), diagnosis of another condition responsible for the clinical signs (n = 2; 1 dog with colonic mucinous adenocarcinoma and 1 dog with pancreatitis), dog not eating the hydrolyzed protein diet (n = 1), and 1 dog being too difficult to handle for a second period of hospitalization. Thus, a total of 12 dogs finished the clinical trial, including Labrador Retrievers (n = 6), Golden Retrievers (n = 2) and 1 dog each of the following breeds: Bracco Italiano, English Setter, Miniature Schnauzer and Standard Poodle. Six dogs were intact males, two dogs castrated males, and four dogs were spayed females. Their median age was 40 months (range, 12–84 months). Seven dogs had been

randomly assigned to receive the synbiotic product and 5 to receive placebo.

Clinical and Clinicopathological Data. The majority of dogs suffered from mixed small and large intestinal clinical signs ($n = 6$), 3 had solely small intestinal clinical signs, 2 only chronic vomiting and 1 only large intestinal diarrhea. Clinical signs at visit 1 were scored mild to moderate with a median CCECAI of 4 (range, 1–6) in the synbiotic group and 5 (range, 2–7) in the placebo group, without a significant difference between groups. In addition, there was no effect of probiotic treatment on CCECAI at visit 2 or 3 compared to visit 1 ($P = 0.72$). For both groups combined, CCECAI was significantly decreased at visits 2 and 3 compared to visit 1 ($P < 0.001$), but not between visits 2 and 3 (Fig 2).

There were no significant differences in hematological and biochemical variables (including TLI, cPL, folate and cobalamin) between treatment groups at visit 1. Serum folate concentrations showed a significant increase with treatment at visit 3 compared to visit 1 ($P = 0.012$). In addition, there was a significant difference in serum folate concentrations between the 2 treatment groups at visit 3 ($P = 0.012$): dogs treated with placebo had higher serum concentrations of folate (mean, $21.42 \mu\text{g L}^{-1}$; SD, $2.56 \mu\text{g L}^{-1}$) than dogs treated with the synbiotic (mean, $17.02 \mu\text{g L}^{-1}$; SD, $1.68 \mu\text{g L}^{-1}$).

Endoscopic Findings. Endoscopic WSAVA scores were low in all areas examined at the initial visit: esophagus median 0 (range, 0–6), stomach median 0 (range, 0–16), duodenum median 1.5 (range, 0–14) and colon median 0 (range, 0–6). Endoscopy scores were even lower (but not significantly) at visit 3: esophagus median 0 (range, 0–1), stomach median 0 (range, 0–3), duodenum median 0 (range, 0–6) and colon median 0 (range, 0–1).

Histopathology. Median total WSAVA scoring of histopathological findings was 3 for the duodenum (range, 1–5) and 2 (range, 1–5) for the colon at visit 1. At visit 3, the median was 1 (range, 0–8) and 3 (range, 0–4) for the duodenum and colon, respectively. There was no significant difference in total scores among visits or

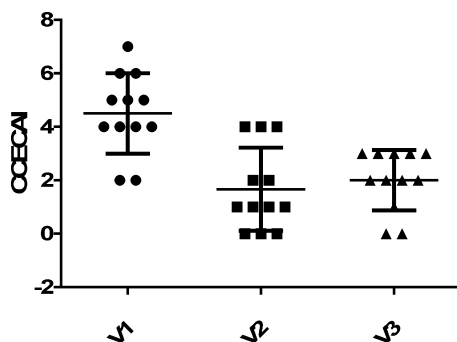


Fig 2. Canine chronic enteropathy clinical activity index (CCECAI) in 12 dogs participating in the clinical trial at visit 1 (V1 = before treatment), visit 2 (V2 = 2 weeks after start of treatment) and visit 3 (V3 = 6 weeks after start of treatment).

between treatment groups for both sites. In the duodenum at visit 1, 7 dogs showed a mild increase in intra-epithelial lymphocytes, 6 dogs showed mild generalized lymphoplasmacytic infiltration, and 2 dogs mild eosinophilic inflammation. Duodenal architectural changes were present in 8 dogs, and included villous stunting ($n = 5$), mucosal fibrosis ($n = 3$), lacteal distension ($n = 2$), crypt distension ($n = 2$) and epithelial injury ($n = 2$). Mild lacteal dilatation was identified in 2 cases.

In the colon (visit 1), mild lymphoplasmacytic infiltration was present in six dogs, mild eosinophilic in two dogs, marked eosinophilic in one dog, and mild neutrophilic inflammation in two dogs. Architectural changes in the colon included crypt hyperplasia ($n = 6$), crypt distention and distortion ($n = 4$), fibrosis and atrophy ($n = 3$) and mild surface epithelium injury ($n = 1$). In 1 dog, the histology of the colon was reported as normal.

Gene Expression. In both duodenum and colon, TLR2 and TLR4 were more abundantly expressed than TLR5, and TLR9 was expressed at the lowest level (see Fig 3). Genes associated with the inflammasome generally were expressed at a much higher level in the colon than in the duodenum, especially casp-1 (Fig 4).

There was no expression of IL-17A in any duodenal sample, although RORC was expressed at a moderate level (Fig 5). In the colon, IL-17A gene expression was detectable, but still negligible. Moderate levels of IL-22 and IL-23p19 and high levels of RORC mRNA expression were present in the colon (see Fig 6).

As observed for other genes, expression levels of Th1 and Th2 cell-related cytokines generally were higher in the colon than in the duodenum. The IL-12p35 subunit was most abundantly expressed across all samples, followed by IFN γ and TNF α . IL-2 was expressed at low levels and IL-4 showed the lowest expression (see Figs 5, 6).

Of the genes associated with Tregs, TGF β showed the highest expression levels, followed by IL-10, whereas FoxP3 was undetectable (Figs 5, 6).

TFF1 expression was very low in duodenal samples, whereas TFF3 was highly expressed. The nuclear receptor PPAR γ showed decreased gene expression at visit 3 compared to visit 1 in the duodenum (possibly more pronounced in the placebo-treated group than the synbiotic-treated dogs), but these differences were not statistically significant.

For all of the examined genes, there was no significant difference in expression with regard to time (before versus after treatment) or treatment (synbiotic versus placebo).

Heatmaps of Gene Expression. When assessing all duodenal or colonic samples, there was no clear effect of visit or treatment on differences in gene expression, both by repeat linear mixed modeling including all gene expression data or by subjective analysis of the clustering created by the heatmaps and dendrograms (see Fig 7). Similarly, there was no effect of visit or treatment on differences in gene expression in the colon by linear mixed modeling, and the heatmap also showed no clustering (see Fig 7). Gene expression responses in

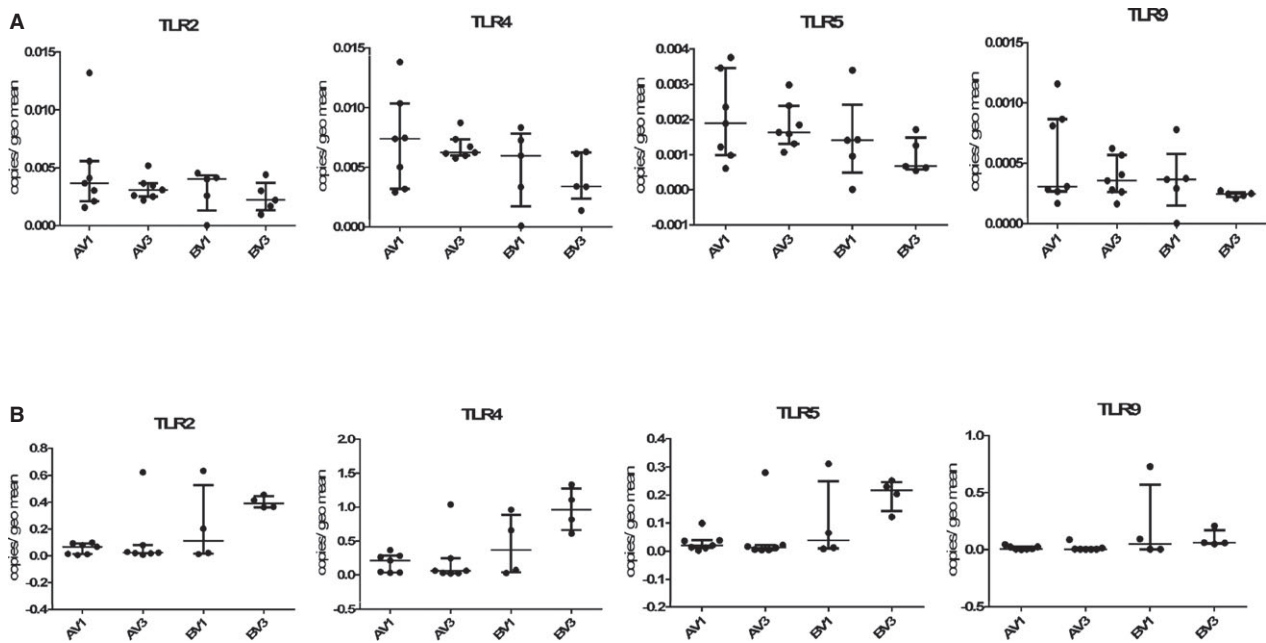


Fig 3. TLR expression in the duodenum (panels A) and colon (panels B) of 12 dogs participating in the clinical trial. V1 = pre-treatment visit, V3 = after 6 weeks of dietary treatment and either synbiotic (labelled A on the x-axis) or placebo (labelled B on the x-axis) administration.

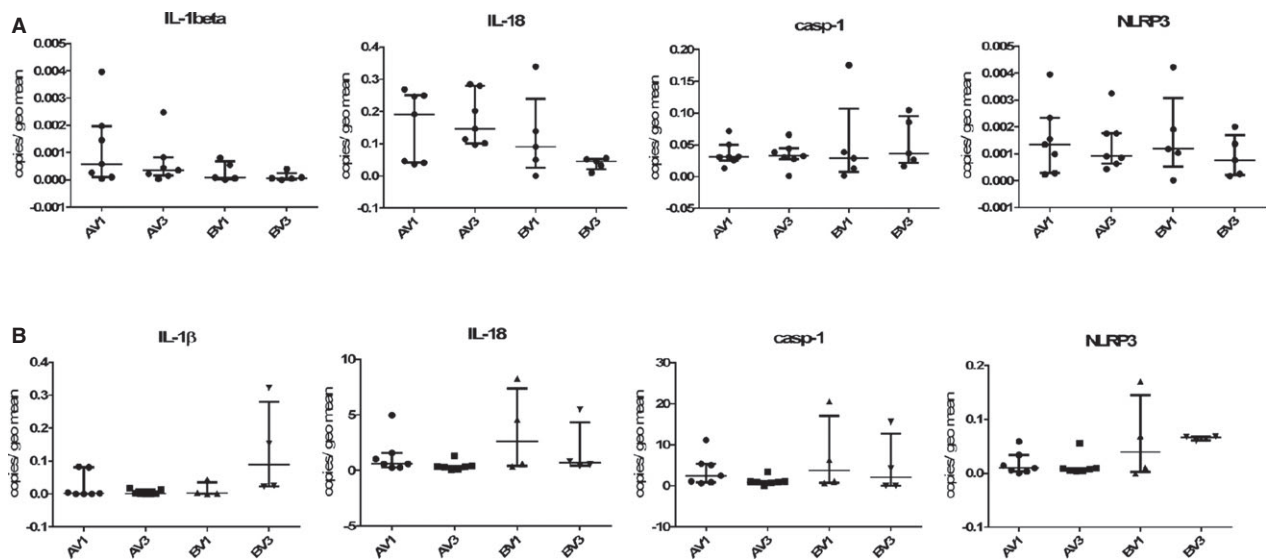


Fig 4. Expression of genes related to the inflammasome in the duodenum (panels A) and colon (panels B) of 12 dogs participating in the clinical trial. V1 = pre-treatment visit, V3 = after 6 weeks of dietary treatment and either synbiotic (labelled A on the x-axis) or placebo (labelled B on the x-axis) administration.

both tissue types were very variable among individual dogs.

Discussion

The objective of the current study was to test the *in vivo* effects (clinical outcome and changes in gene expression in intestinal tissues) of the PO administration of a synbiotic containing the probiotic EF in dogs with

FRD. Although the number of initially recruited dogs would have likely been sufficient to show a difference based on the power calculation, unfortunately, the drop-out rate was considerable. Hence, no additional clinical benefit of the administration of the synbiotic could be demonstrated or excluded. Also, no significant differences in expression of the examined genes were observed between visit 1 and 3 or between treatment groups in the duodenum or colon.

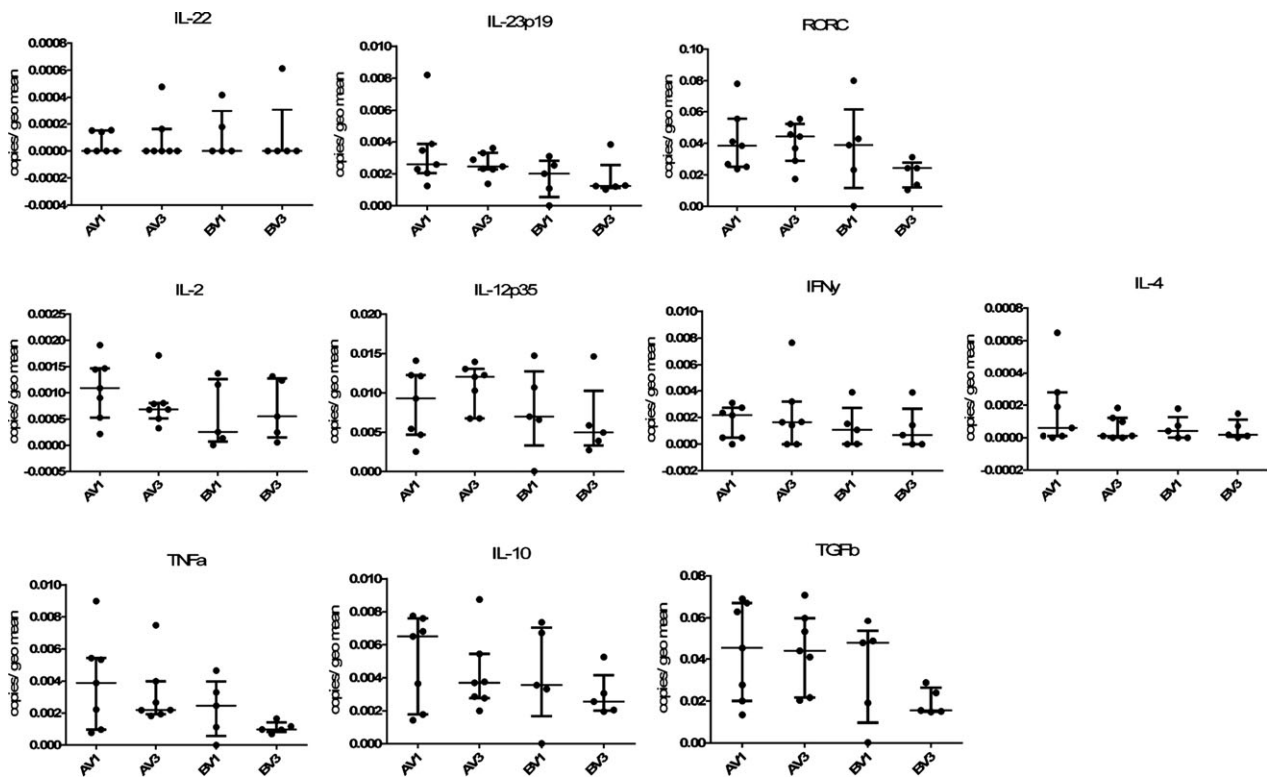


Fig 5. Relative gene expression of cytokines related to different T helper cell lines in the duodenum of dogs with chronic enteropathy participating in the clinical trial. The upper panel shows factors related to Th17 cells (IL-[Interleukin] 22, IL-23p35 and the transcription factor RORC), the middle panel Th1 (IL-2, IL-12p35) and Th2 (IFN γ , IL-4) cytokines, and the lower panel TNF α , which can be classed as innate cytokine or Th1 related, as well as IL-10 and Transforming growth factor β (TGF β) as representatives of cytokines produced by regulatory T cells. On the x-axis groups represent different visits (V1 = before treatment, V3 = after 6 weeks of treatment) and different treatment groups: A = hydrolyzed protein diet plus synbiotic product containing *Enterococcus faecium*; B = hydrolyzed protein diet plus placebo.

The study population was consistent with the literature regarding breed distribution and age of dogs with CE.^{5,36,37} Especially, dogs with FRD seem to be substantially younger than dogs suffering from other forms of CE.^{1,38,39} There was no significant correlation between CCECAI and histopathological scores, a finding that has been demonstrated before.^{36,38} However, it is possible that the dietary trial was not conducted for a sufficient period of time for morphological changes to resolve.

Interestingly, in all dogs, serum folate concentrations increased above the reference range with dietary treatment alone. This was more pronounced in the placebo-treated group than in the synbiotic group. Because exocrine pancreatic insufficiency had been eliminated in these dogs, this finding could be indicative of a change in bacterial composition induced by the dietary intervention, which could have been ameliorated by probiotic treatment. Complementary investigations into the composition of the intestinal microbiome before treatment unfortunately was not performed. Macroscopic endoscopy scores and WSAVA histology scores did not change significantly with treatment, which is consistent with the literature.^{1,36,40,41}

The gene expression study showed that certain receptors of the innate immune system are differentially expressed in the canine intestine (TLR2 and 4 are more

abundant than TLR5 and 9). This, as well as the fact that TFF1 is expressed at low levels, whereas TFF3 is abundantly present, has been reported before.^{39,42-44} The general notion that there is no Th cell lineage-associated cytokine bias in biopsies from dogs with FRD also could be confirmed⁴⁵ and was shown to be true for both the duodenum and the colon.

Most genes investigated were expressed at a higher level in the colonic mucosa compared to the duodenum. This is unlikely due to a better preservation or quality of colonic samples, because RNA quality and quantity were assessed for all biopsies and quantification of gene expression was performed relative to several reference genes that were assessed for their stability across samples. The increased gene expression levels in the large intestine could be associated with the larger number of bacteria present in the lumen compared to numbers in the small intestine. However, this also did not change with treatment for FRD or probiotic supplementation.

Limitations of the study included the fact that (despite all efforts) it remained underpowered. Therefore, results regarding the clinical benefit of EF in canine CE, as well as possible effects on gene expression, must be interpreted with caution. The clinical trial was designed to only include dogs with FRD and not other forms of CE. Including more severely affected

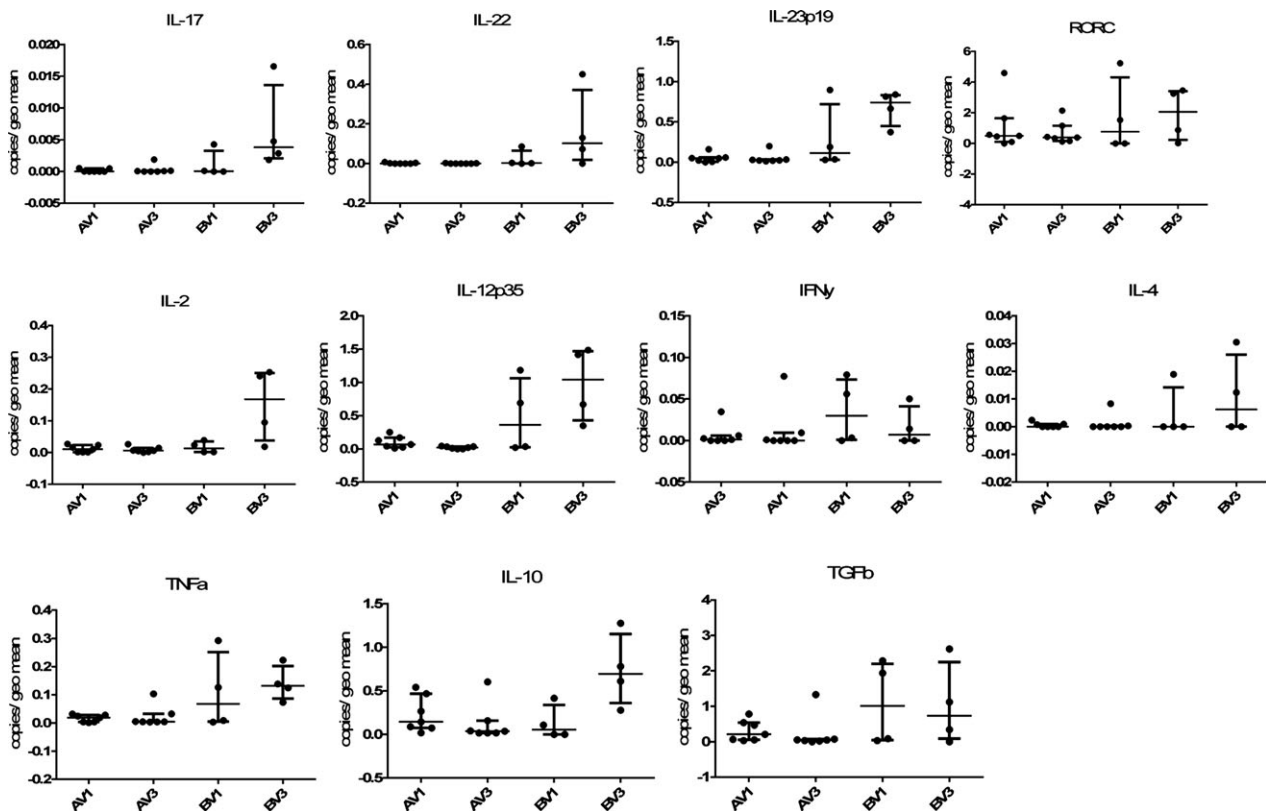


Fig 6. Relative gene expression of cytokines related to different T helper cell lines in the colon of dogs with chronic enteropathy participating in the clinical trial. The upper panel shows factors related to Th17 cells (IL-[Interleukin] 17, IL-22, IL-23p35 and the transcription factor RORC), the middle panel Th1 (IL-2, IL-12p35) and Th2 (IFN γ , IL-4) cytokines, and the lower panel TNF α , which can be classed as innate cytokine or Th1 related, as well as IL-10 and Transforming growth factor β (TGF β) as representatives of cytokines produced by regulatory T cells. On the x-axis groups represent different visits (V1 = before treatment, V3 = after 6 weeks of treatment) and different treatment groups: A = hydrolyzed protein diet plus synbiotic product containing *Enterococcus faecium*; B = hydrolyzed protein diet plus placebo.

dogs (with ARD or SRD) needing a variety of treatments would have required even larger numbers of dogs in each treatment group and might have made it more difficult to assess clinical improvement. Even if the desired 11 dogs had been recruited per treatment group, the study might have been underpowered. The choice of the appropriate data set from the literature to use for a power calculation is challenging, because usually a decrease of clinical indices of approximately 75% is considered consistent with remission.⁴⁶ However, this has been demonstrated mostly in dogs with idiopathic IBD (i.e., SRD), which seem to have much higher disease activity compared to FRD dogs.¹ Because the expected probiotic effect was unknown, power calculation was difficult to conduct.

Also, the dose of EF chosen to be administered to the dogs of this clinical trial was recommended by the manufacturer (1×10^9 CFU once daily). However, limited data are available to suggest the appropriate amount of that particular EF strain needed to induce clinical, immunological or microbiome alterations. Administration of $2\text{--}3 \times 10^9$ CFU/day of a different EF strain resulted in its persistence in feces for 3 months after cessation of the treatment.¹⁹ In addition,

culture of feces before and after treatment with EF was not performed in this study, which potentially could have been used to ensure owner compliance of capsule administration. However, because EF can be part of the normal fecal flora and the probiotic strain cannot be differentiated from the naturally-occurring EF strains, the additional benefit of fecal culture is questionable.

In conclusion, this study did not have enough power to enable a statement regarding a potential additional effect of EF (given as a synbiotic) on clinical signs or gene expression in intestinal biopsies in dogs with FRD within a time period of 6 weeks. More studies using a larger number of dogs or dogs with different forms of CE are needed to assess the benefit of probiotics in CE of dogs. Testing of different probiotic strains for their clinical or anti-inflammatory properties in comparison with EF also should be considered.

Footnotes

- ^a Synbiotic D-C; Probiotics International/ Protexin, Somerset, UK
^b Microsoft Office, Excel, Microsoft Cooperation, Redmond, USA

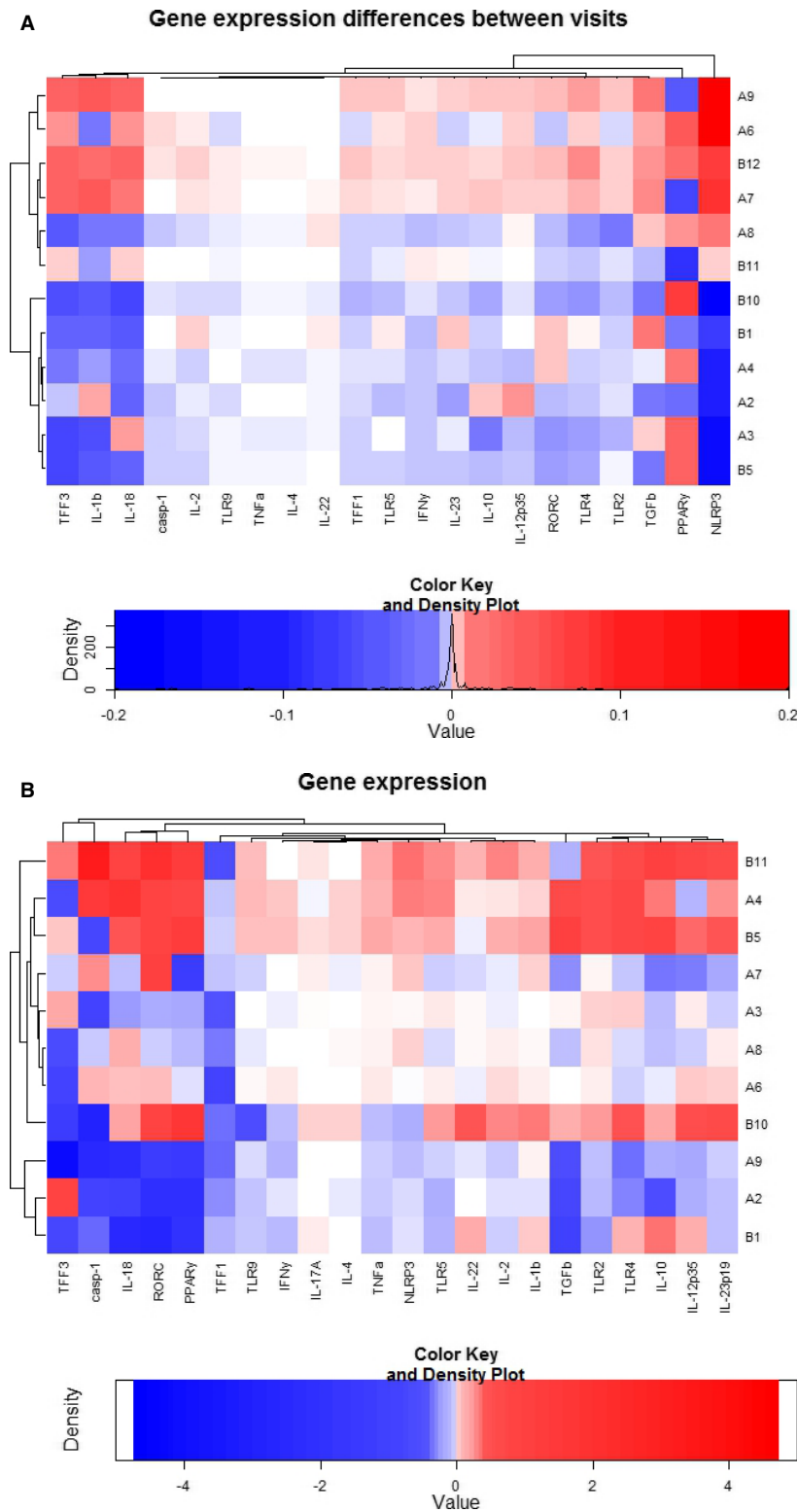


Fig 7. Heatmap and dendrograms depicting the difference in duodenal (A) and colonic (B) gene expression before and after treatment of 12 dogs with food-responsive chronic enteropathy. Examined genes are listed on the x-axis, dog IDs in numbers and with a reference to treatment (A = synbiotic; B = placebo) are shown on the y-axis. Both clustering of genes and dogs was allowed in these heatmaps based on gene expression similarities. Red colour indicates an increase in gene expression from visit 1 (before treatment) to visit 3 (6 weeks after treatment), blue indicates a decrease as depicted by the colour key.

- ^c Purina Veterinary Diet canine HA Hypo Allergenic, Purina, Nestle, York, UK
- ^d RNAlater (Ambion, UK)
- ^e Qiagen (Manchester, UK)
- ^f Mixer Mill MM300 tissue grinder (Retch, Leeds, UK)
- ^g RNeasy micro kit (Qiagen)
- ^h Eukaryote Total RNA Nano chip, Agilent Bioanalyzer, Agilent Technologies, Wokingham, UK)
- ⁱ iScript cDNA synthesis kit (Bio-Rad, Hemel Hempstead, UK)
- ^j qBase/GeNorm software (Biogazelle, Gent, Belgium)
- ^k PrimerDesign Ltd., Southampton, UK)
- ^l Immolase polymerase, Bioline, London, UK)
- ^m Wizard SV Gel and PCR clean-up system (Promega)
- ⁿ pGemT-Easy vector (Promega)
- ^o Source Bioscience, Cambridge, UK
- ^p SsoFast Evagreen Supermix (Bio-Rad, Hemel Hempstead, UK)
- ^q The R project for statistical computing; www.r-project.org; "gplots" package; function heatmap.2
- ^r SPSS (IBM SPSS statistics, version 19.0)
- ^s Graph Pad Prism Version 5 (Graph Pad Software Inc., La Jolla, California, USA)

Acknowledgments

The authors thank the owners of the dogs participating in this study for taking part, as well as the help of the staff of the Queen Mother Hospital for Animals and the Clinical Investigation Centre of the RVC for their support in recruiting cases and acquiring all necessary samples and data. Additional thanks go to Dr. Victoria Offord (Bioinformatics Unit of the RVC) for her help with using the statistical programme "R" and creating the heat maps. The study was supported by the BBSRC with a studentship with Probiotics International Ltd., Somerset, UK. The RVC manuscript approval number is CSS_00823.

Conflict of Interest Declaration: Authors disclose no conflict of interest.

Off-label Antimicrobial Declaration: Authors declare no off-label use of antimicrobials.

References

- Allenspach K, Wieland B, Gröne A, Gaschen F. Chronic enteropathies in dogs: evaluation of risk factors for negative outcome. *J Vet Intern Med* 2007;21:700–708.
- Jergens AE, Moore FM, Haynes JS, Miles KG. Idiopathic inflammatory bowel disease in dogs and cats: 84 cases (1987–1990). *J Am Vet Med Assoc* 1992;201:1603–1608.
- German AJ, Hall EJ, Day MJ. Chronic intestinal inflammation and intestinal disease in dogs. *J Vet Intern Med* 2003;17:8–20.
- Suchodolski JS, Xenoulis PG, Paddock CG, et al. Molecular analysis of the bacterial microbiota in duodenal biopsies from dogs with idiopathic inflammatory bowel disease. *Vet Microbiol* 2010;142:394–400.
- Suchodolski JS, Markel ME, Garcia-Mazcorro JF, et al. The fecal microbiome in dogs with acute diarrhea and idiopathic inflammatory bowel disease. *PLoS ONE* 2012;7:e51907.
- Xenoulis PG, Palculict B, Allenspach K, et al. Molecular-phylogenetic characterization of microbial communities imbalances in the small intestine of dogs with inflammatory bowel disease. *FEMS Microbiol Ecol* 2008;66:579–589.
- van Baarlen P, Troost FJ, van Hemert S, et al. Differential NF-kappaB pathways induction by *Lactobacillus plantarum* in the duodenum of healthy humans correlating with immune tolerance. *Proc Natl Acad Sci USA* 2009;106:2371–2376.
- Di Caro S, Tao H, Grillo A, et al. Effects of *Lactobacillus GG* on genes expression pattern in small bowel mucosa. *Dig Liver Dis* 2005;37:320–329.
- Foligne B, Zoumpopoulou G, Dewulf J, et al. A key role of dendritic cells in probiotic functionality. *PLoS ONE* 2007;2:e313.
- Thomas CM, Versalovic J. Probiotics-host communication: modulation of signaling pathways in the intestine. *Gut Microbes* 2010;1:148–163.
- Shida K, Nanno M, Nagata S. Flexible cytokine production by macrophages and T cells in response to probiotic bacteria: a possible mechanism by which probiotics exert multifunctional immune regulatory activities. *Gut Microbes* 2011;2:109–114.
- Bellavia M, Rappa F, Lo Bello M, et al. *Lactobacillus casei* and *bifidobacterium lactis* supplementation reduces tissue damage of intestinal mucosa and liver after 2,4,6-trinitrobenzenesulfonic acid treatment in mice. *J Biol Regul Homeost Agents* 2014;28:251–261.
- Jeon SG, Kayama H, Ueda Y, et al. Probiotic *Bifidobacterium breve* induces IL-10-producing Tr1 cells in the colon. *PLoS Pathog* 2012;8:e1002714.
- Linskens RK, Huijsdens XW, Savelkoul PH, et al. The bacterial flora in inflammatory bowel disease: current insights in pathogenesis and the influence of antibiotics and probiotics. *Scand J Gastroenterol Suppl* 2001;234:29–40.
- Sauter SN, Benyacoub J, Allenspach K, et al. Effects of probiotic bacteria in dogs with food responsive diarrhoea treated with an elimination diet. *J Anim Physiol Anim Nutr (Berl)* 2006;90:269–277.
- Rossi G, Pengo G, Caldin M, et al. Comparison of microbiological, histological, and immunomodulatory parameters in response to treatment with either combination therapy with prednisone and metronidazole or probiotic VSL#3 strains in dogs with idiopathic inflammatory bowel disease. *PLoS ONE* 2014;9:e94699.
- Sokol H, Pigneur B, Watterlot L, et al. *Faecalibacterium prausnitzii* is an anti-inflammatory commensal bacterium identified by gut microbiota analysis of Crohn disease patients. *Proc Natl Acad Sci USA* 2008;105:16731–16736.
- Marcináková M, Klingberg TD, Lauková A, Budde BB. The effect of pH, bile and calcium on the adhesion ability of probiotic enterococci of animal origin to the porcine jejunal epithelial cell line IPEC-J2. *Anaerobe* 2010;16:120–124.
- Marcináková M, Simonová M, Stropflová V, Lauková A. Oral application of *Enterococcus faecium* strain EE3 in healthy dogs. *Folia Microbiol. (Praha)* 2006;51:239–242.
- Washabau RJ, Day MJ, Willard MD, et al. Endoscopic, biopsy, and histopathologic guidelines for the evaluation of gastrointestinal inflammation in companion animals. *J Vet Intern Med* 2010;24:10–26.
- Day MJ, Bilzer T, Mansell J, et al. Histopathological standards for the diagnosis of gastrointestinal inflammation in endoscopic biopsy samples from the dog and cat: a report from the World Small Animal Veterinary Association Gastrointestinal Standardization Group. *J Comp Pathol* 2008;138(Suppl 1):S1–S43.
- Procoli F, Mötsküla PF, Keyte SV, et al. Comparison of histopathologic findings in duodenal and ileal endoscopic biopsies in dogs with chronic small intestinal enteropathies. *J Vet Intern Med* 2013;27:268–274.
- Schmitz S, Henrich M, Neiger R, et al. Stimulation of duodenal biopsies and whole blood from dogs with food-responsive chronic enteropathy and healthy dogs with toll-like receptor ligands and probiotic *Enterococcus faecium*. *Scand J Immunol* 2014;80:85–94.

24. Rozen S, Skaletsky H. Primer3 on the WWW for general users and for biologist programmers. *Methods Mol Biol* 2000;132:365–386.
25. Vandesompele J, de Preter K, Pattyn F, et al. Accurate normalization of real-time quantitative RT-PCR data by geometric averaging of multiple internal control genes. *Genome Biol* 2002;3:RESEARCH0034.
26. Abreu MT. Toll-like receptor signalling in the intestinal epithelium: how bacterial recognition shapes intestinal function. *Nat Rev Immunol* 2010;10:133–141.
27. Tyrer P, Foxwell AR, Cripps AW, et al. Microbial pattern recognition receptors mediate M-cell uptake of a gram negative bacterium. *Infect Immun* 2006;74:625–631.
28. Cario E. Heads up! How the intestinal epithelium safeguards mucosal barrier immunity through the inflammasome and beyond. *Curr Opin Gastroenterol* 2010;26:583–590.
29. Hirota K, Martin B, Veldhoen M. Development, regulation and functional capacities of Th17 cells. *Semin Immunopathol* 2010;32:3–16.
30. Kanai T, Mikanmi Y, Sujuno T, et al. ROR γ t-dependent IL-17A-producing cells in the pathogenesis of intestinal inflammation. *Mucosal Immunol* 2012;5:240–247.
31. Mosmann TR, Coffman RL. Th1 and Th2 cells: different patterns of lymphokine secretion lead to different functional properties. *Annu Rev Immunol* 1989;7:145–173.
32. Fontenot JD, Gavin MA, Rudensky AY. FoxP3 programs the development and function of CD4 + CD25 + regulatory T-cells. *Nat Immunol* 2003;4:330–336.
33. Thim L. Trefoil peptides: from structure to function. *Cell Mol Life Sci* 1997;53:888–903.
34. Wahli W, Michalik L. PPARs at the crossroads of lipid signaling and inflammation. *Trends Endocrinol Metab* 2012;23:351–363.
35. Are A, Aronsson L, Wang S, et al. Enterococcus faecalis from newborn babies regulates endogenous PPAR γ activity and IL-10 levels in colonic epithelial cells. *Proc Natl Acad Sci USA* 2008;106:1943–1948.
36. Schreiner NMS, Gaschen F, Gröne A, et al. Clinical signs, histology, and CD3-positive cells before and after treatment of dogs with chronic enteropathies. *J Vet Intern Med* 2008;22:1079–1083.
37. Mandigers PJJ, Biourge V, van den Ingh TSGAM, et al. A randomized, open-label, positively-controlled field trial of a hydrolyzed protein diet in dogs with chronic small bowel enteropathy. *J Vet Intern Med* 2010;24:1350–1357.
38. Walker D, Knuchel-Takano A, McCutchan A, et al. A comprehensive pathological survey of duodenal biopsies from dogs with diet-responsive chronic enteropathy. *J Vet Intern Med* 2013;27:862–874.
39. Allenspach K, House A, Smith K, et al. Evaluation of mucosal bacteria and histopathology, clinical disease activity and expression of Toll-like receptors in German shepherd dogs with chronic enteropathies. *Vet Microbiol* 2010;146:326–335.
40. Luckschander N, Allenspach K, Hall J, et al. Perinuclear antineutrophilic cytoplasmic antibody and response to treatment in diarrheic dogs with food responsive disease or inflammatory bowel disease. *J Vet Intern Med* 2006;20:221–227.
41. Gaschen L, Kircher P, Stüssi A, et al. Comparison of ultrasonographic findings with clinical activity index (CIBDAI) and diagnosis in dogs with chronic enteropathies. *Vet Radiol Ultrasound* 2008;49:656–664.
42. McMahon LA, House AK, Catchpole B, et al. Expression of Toll-like receptor 2 in duodenal biopsies from dogs with inflammatory bowel disease is associated with severity of disease. *Vet Immunol Immunopathol* 2010;135:158–163.
43. Burgener IA, König A, Allenspach K, et al. Upregulation of toll-like receptors in chronic enteropathies in dogs. *J Vet Intern Med* 2008;22:553–560.
44. Schmitz S, Hill S, Werling D, Allenspach K. Expression of trefoil factor genes in the duodenum and colon of dogs with inflammatory bowel disease and healthy dogs. *Vet Immunol Immunopathol* 2013;151:168–172.
45. Jergens AE, Sonea IM, O'Connor AM, et al. Intestinal cytokine mRNA expression in canine inflammatory bowel disease: a meta-analysis with critical appraisal. *Comp Med* 2009;59:153–162.
46. Jergens AE, Crandell J, Morrison JA, et al. Comparison of oral prednisone and prednisone combined with metronidazole for induction therapy of canine inflammatory bowel disease: a randomized-controlled trial. *J Vet Intern Med* 2010;24:269–277.