



Original Contribution

Circulating 25-Hydroxyvitamin D and Risk of Kidney Cancer

Cohort Consortium Vitamin D Pooling Project of Rarer Cancers

Lisa Gallicchio*, Lee E. Moore, Victoria L. Stevens, Jiyoung Ahn, Demetrius Albanes, Virginia Hartmuller, V. Wendy Setiawan, Kathy J. Helzlsouer, Gong Yang, Yong-Bing Xiang, Xiao-Ou Shu, Kirk Snyder, Stephanie J. Weinstein, Kai Yu, Anne Zeleniuch-Jacquotte, Wei Zheng, Qiuyin Cai, David S. Campbell, Yu Chen, Wong-Ho Chow, Ronald L. Horst, Laurence N. Kolonel, Marjorie L. McCullough, Mark P. Purdue, and Karen L. Koenig

* Correspondence to Dr. Lisa Gallicchio, The Prevention and Research Center, The Weinberg Center for Women's Health and Medicine, Mercy Medical Center, 227 St. Paul Place, 6th Floor, Baltimore, MD 21202 (e-mail: lgallic@mdmercy.com).

Initially submitted October 23, 2009; accepted for publication April 12, 2010.

Although the kidney is a major organ for vitamin D metabolism, activity, and calcium-related homeostasis, little is known about whether this nutrient plays a role in the development or the inhibition of kidney cancer. To address this gap in knowledge, the authors examined the association between circulating 25-hydroxyvitamin D (25(OH)D) and kidney cancer within a large, nested case-control study developed as part of the Cohort Consortium Vitamin D Pooling Project of Rarer Cancers. Concentrations of 25(OH)D were measured from 775 kidney cancer cases and 775 age-, sex-, race-, and season-matched controls from 8 prospective cohort studies. Overall, neither low nor high concentrations of circulating 25(OH)D were significantly associated with kidney cancer risk. Although the data showed a statistically significant decreased risk for females (odds ratio = 0.31, 95% confidence interval: 0.12, 0.85) with 25(OH)D concentrations of ≥ 75 nmol/L, the linear trend was not statistically significant and the number of cases in this category was small ($n = 14$). The findings from this consortium-based study do not support the hypothesis that vitamin D is inversely associated with the risk of kidney cancer overall or with renal cell carcinoma specifically.

case-control studies; cohort studies; kidney neoplasms; prospective studies; vitamin D

Abbreviations: CI, confidence interval; ICD-8 (9), *International Classification of Diseases*, Eighth (Ninth) Revision; ICD-10: *International Statistical Classification of Diseases and Related Health Problems*, Tenth Revision; ICD-O, *International Classification of Diseases for Oncology*; 25(OH)D, 25-hydroxyvitamin D; OR, odds ratio; VDPP, Cohort Consortium Vitamin D Pooling Project of Rarer Cancers.

In the United States, kidney cancer incidence has been increasing at a rate of approximately 2% per year and accounts for 2.6% of all newly diagnosed cancer cases (1). Renal cell carcinoma is the most common type of kidney cancer, and incidence rates of this histologic type are twice as high among males compared with females (2). The established risk factors for renal cell carcinoma are cigarette smoking, hypertension, and obesity (3).

Recent widespread interest has focused on the health-promoting effects of vitamin D, the "sunshine" vitamin.

Vitamin D is well known for its role in promoting bone health through the regulation of bone growth and remodeling as well as calcium homeostasis (4). In addition, there is increasing laboratory evidence that vitamin D is an anticarcinogenic agent (4, 5). Vitamin D is obtained from exposure to ultraviolet light (sunlight) and certain foods such as oily fish and vitamin-D-fortified milk, orange juice, and cereal. It is metabolized to 25-hydroxyvitamin D (25(OH)D), the accepted biomarker of vitamin D status (6), which is activated to 1,25 dihydroxyvitamin D in the kidney. This

metabolite in turn regulates the expression of many proteins involved in cellular proliferation, differentiation, and apoptosis (7).

Studies indicate that vitamin D, measured as circulating 25(OH)D, may be associated with a reduced risk of several types of cancer, including colon, breast, and prostate (8–11). Although the kidney is a major organ for vitamin D metabolism and activity, and related calcium homeostasis, little is known about the association between vitamin D and cancer in this organ. Ecologic studies conducted in the United States and globally have shown an inverse association between levels of solar ultraviolet irradiance and kidney cancer incidence (12, 13). In contrast, 2 prospective cohort and 2 case-control studies focusing on dietary vitamin D reported no statistically significant association with the development of kidney cancer (14–17). However, the relevance of these studies is limited by study design issues (14, 16), a small number of cases (15), and the absence of data on vitamin D from ultraviolet light exposure (14–17), the principal source of circulating vitamin D.

In this study, the association between circulating 25(OH)D and kidney cancer was examined within a large, nested case-control study developed as part of the Cohort Consortium Vitamin D Pooling Project of Rarer Cancers (VDPP). For this investigation, prediagnostic 25(OH)D concentrations were measured and data were analyzed from 775 kidney cancer cases and 775 controls participating in 8 prospective cohorts.

MATERIALS AND METHODS

A detailed description of cohorts participating in VDPP and the general methods for the project are provided in a separate paper (18). Of the 10 cohorts in VDPP, the following 8 contributed cases of kidney cancer: the Alpha-Tocopherol, Beta-Carotene Cancer Prevention Study (ATBC); the Cancer Prevention Study II Nutrition Cohort (CPS-II); CLUE; the Multiethnic Cohort Study (MEC); the New York University Women's Health Study (NYU-WHS); the Prostate, Lung, Colorectal and Ovarian Cancer Screening Trial (PLCO); the Shanghai Men's Health Study (SMHS); and the Shanghai Women's Health Study (SWHS).

From these 8 cohorts, plasma/serum samples from 783 kidney cancer cases and 783 controls, alive and not diagnosed with cancer at the time of case diagnosis, and matched on age at blood collection (± 1 year), sex, race (white/black/Asian/other), and date of blood draw (± 30 days), were sent to the laboratory for measurement of circulating 25(OH)D. Five cases were excluded after 25(OH)D measurement because they were found to have cancer of the ureter (*International Classification of Diseases*, Eighth Revision (ICD-8)/*International Classification of Diseases*, Ninth Revision (ICD-9) code 189.2 or *International Statistical Classification of Diseases and Related Health Problems*, Tenth Revision (ICD-10) code C66 or *International Classification of Diseases for Oncology* (ICD-O) code C66.9) or cancer of a urinary organ, site unspecified (ICD-8/ICD-9 code 189.9 or ICD-10 code C68 or ICD-O code C68–C68.9). Furthermore, 2 cases were excluded after 25(OH)D measurement because their date of diagnosis was prior to their date of

blood draw, and 1 control was excluded because no 25(OH)D data were returned from the laboratory. The remaining 776 cases and 782 controls were eligible to be included in the analytic data set. Because only matched pairs were analyzed, the final analytic data set consisted of 775 matched case-control pairs. Cases included 708 with renal cell carcinoma (ICD-8/ICD-9 code 189.0 or ICD-10 code C64 or ICD-O code 64.9) and 67 with carcinoma of the renal pelvis (ICD-8/ICD-9 code 189.1 or ICD-9/ICD-10 code C65 or ICD-O code 65.9).

All serum/plasma samples were measured for 25(OH)D at Heartland Assays, Inc., as described in Gallicchio et al. (18). The quality control measures included use of samples of the vitamin D standard from the National Institute of Standards and Technology (NIST) at both a "normal" (~ 65 nmol/L) and a "low" (~ 35 nmol/L) level. As reported in Gallicchio et al. (18) for the VDPP, interbatch and intrabatch coefficients of variation for low-level samples were 12.7% and 9.3%, respectively; interbatch and intrabatch coefficients of variation for normal-level samples were 13.6% and 11.0%, respectively. The median interbatch coefficient of variation for the cohort quality control samples was 13.2% (range: 4.8%–17.0%); the median intrabatch coefficient of variation for the cohort quality control samples was 9.9% (range: 3.8%–16.4%).

The main analyses described in this paper were conducted by using clinically defined cutpoints (4, 19, 20): < 25 nmol/L, 25 – < 37.5 nmol/L, 37.5 – < 50 nmol/L, 50 – < 75 nmol/L, 75 – < 100 nmol/L, and ≥ 100 nmol/L. The referent category chosen was 50 – < 75 nmol/L because this range includes the mean level of the US population (62.91 nmol/L, standard error of the mean, 0.81 for males; 61.54 nmol/L, standard error of the mean, 0.85 for females) according to 2000–2004 National Health and Nutrition Examination Survey data (21).

In addition to the core VDPP variables, the following additional variables were requested for inclusion in the kidney cancer analyses: family history of renal cancer, history of high blood pressure at blood draw, and history of diabetes at blood draw. The Wald statistic, generated by using conditional logistic regression, was used to test the significance of differences between the kidney cancer cases and controls for selected variables, including median 25(OH)D concentrations. Variables in the VDPP data set that were 1) associated with both 25(OH)D and kidney cancer or 2) identified based on the literature as risk factors for kidney cancer, or both, were included in the fully adjusted models; these variables were education, body mass index, height, smoking status, current alcohol drinking, history of high blood pressure; and history of diabetes. All of these variables were treated as categorical in the model with the exception of height, which was treated as a continuous variable. Data on physical activity were also obtained because this variable has been shown to be associated with both kidney cancer and circulating 25(OH)D (22, 23); however, this variable may be in the causal pathway and not a confounder. For this reason, physical activity was not included in the fully adjusted model.

Conditional logistic regression models adjusting for the variables listed above were constructed to estimate the

Table 1. Characteristics of Participants, by Cohort, in the Investigation of Kidney Cancer Within the Cohort Consortium Vitamin D Pooling Project of Rarer Cancers

Cohort	No. of Cases	No. of Controls	Median Years From Blood Collection to Cancer Diagnosis (Interquartile Range)	Median Circulating 25(OH)D, nmol/L (Interquartile Range)	
				Cases	Controls
ATBC	286	286	8.5 (4.6–12.4)	33.8 (22.7–47.5)	31.6 (21.5–47.5)
CLUE	102	102	10.9 (5.1–15.9)	62.8 (46.7–80.4)	63.7 (49.7–81.3)
CPS-II	58	58	2.4 (1.1–3.7)	65.5 (45.2–74.8)	59.0 (43.5–83.7)
MEC	64	64	2.2 (1.1–3.4)	48.9 (35.5–78.4)	53.3 (39.3–73.0)
NYU-WHS	35	35	10.8 (5.2–15.4)	37.8 (22.7–50.0)	39.7 (30.4–56.1)
PLCO	161	161	5.1 (2.4–6.8)	53.0 (40.4–64.5)	55.0 (43.0–68.5)
SMHS	32	32	2.2 (0.8–3.1)	39.5 (32.6–51.9)	38.5 (28.0–52.9)
SWHS	37	37	4.7 (3.1–7.3)	37.6 (28.4–42.0)	30.9 (23.5–41.9)
Total	775	775	5.5 (2.7–9.9)	44.4 (30.7–62.9)	45.4 (30.2–62.5)

Abbreviations: ATBC, Alpha-Tocopherol, Beta-Carotene Cancer Prevention Study; CPS-II, Cancer Prevention Study II Nutrition Cohort; MEC, Multiethnic Cohort Study; NYU-WHS, New York University Women's Health Study; 25(OH)D, 25-hydroxyvitamin D; PLCO, Prostate, Lung, Colorectal and Ovarian Cancer Screening Trial; SMHS, Shanghai Men's Health Study; SWHS, Shanghai Women's Health Study.

overall odds ratios and 95% confidence intervals for kidney cancer by 25(OH)D concentration, examined by using the 6-category clinically defined cutpoint variable. Trend tests were conducted by assigning values of 1–6 to the respective 25(OH)D categories and treating the new variable as continuous in the model. Unconditional logistic regression analyses using a 5-category 25(OH)D variable with the categories of 75–<100 nmol/L and \geq 100 nmol/L combined adjusting for the matching factors and the other potential confounders listed above were also conducted to examine the associations between 25(OH)D and kidney cancer in strata based on predefined categories of sex, season (winter/summer), age at blood collection, race, latitude, length of follow-up, calcium intake/supplementation, body mass index, cigarette smoking, history of high blood pressure, and history of diabetes. No differences in the investigated association were observed in these stratified analyses; thus, with the exception of the sex- and season-specific analyses, the results of the stratified analyses are not presented here.

Additionally, pooled analyses using cohort-, sex-, and season-specific quartile cutpoints (using the 2-season variable), based on the distribution of circulating 25(OH)D among all controls from all VDPP cancer sites combined, were also conducted. Both conditional and unconditional models were run with the lowest fourth as the referent category; the results were similar. Analyses to adjust for season using the residual method were also conducted, as described in Gallicchio et al. (18). Residual adjustment for season takes into account the gradual nature of changes in concentrations of 25(OH)D over the year, which may be better than adjusting for season. For the residual analyses, conditional logistic regression models were run with the lowest fourth as the referent category.

All analyses described above were conducted for all kidney cancer cases (and matched controls) and then for renal

cell carcinoma cases (and matched controls) only. Analyses were also conducted by excluding cases (and matched controls) diagnosed within 2 years of blood draw. Because the resulting estimates from these analyses were similar, only the stratified results based on all cases (and matched controls) are presented.

Finally, meta-analyses were conducted to examine the overall and sex-specific associations of both low (<25 nmol/L) and high (\geq 75 nmol/L) concentrations of circulating 25(OH)D compared with the referent category of 50–<75 nmol/L with kidney cancer for all of the contributing study cohorts. Pooled multivariate log odds ratio estimates adjusted for the covariates in the models described above (e.g., education, body mass index, high blood pressure) were obtained by using inverse-variance weights in random-effects models. Statistical heterogeneity was assessed by using the DerSimonian and Laird Q statistic (24). Because of small numbers of cases and controls in the Shanghai Women's Health Study and the Shanghai Men's Health Study, data from these cohorts were combined for the overall meta-analyses. In addition, because of small numbers (\leq 1 case in the high or low 25(OH)D category), not all cohorts contributed to all of the meta-analyses. Specifically, the New York University Women's Health Study dropped out of the overall and female-specific high versus referent 25(OH)D concentration meta-analyses; CLUE, the Cancer Prevention Study II Nutrition Cohort, and the Multiethnic Cohort Study dropped out of the female-specific low versus referent 25(OH)D concentration meta-analyses; and the Cancer Prevention Study II Nutrition Cohort, the Multiethnic Cohort Study, and the Prostate, Lung, Colorectal and Ovarian Cancer Screening Trial dropped out of the female-specific high versus referent 25(OH)D concentration meta-analyses. To explore the influence of each cohort on the results, the meta-analyses described above were repeated by excluding one cohort at a time.

Table 2. Selected Characteristics of Cases and Controls in the Investigation of Kidney Cancer Within the Cohort Consortium Vitamin D Pooling Project of Rarer Cancers

Characteristic	Cases (N = 775)			Controls (N = 775)			P Value ^a
	No.	%	Median (Interquartile Range)	No.	%	Median (Interquartile Range)	
Age at blood collection, years			60 (54–66)			60 (54–66)	Matched
Sex							Matched
Male	577	74.5		577	74.5		
Female	198	25.5		198	25.5		
Race							Matched
White	623	80.4		621	80.1		
Black	26	3.4		29	3.7		
Asian	83	10.7		83	10.7		
Other	40	5.2		39	5.0		
Missing	3	0.4		3	0.4		
Education							0.39
Less than high school	179	23.1		202	26.1		
Completed high school	153	19.7		129	16.6		
Vocational school	148	19.1		134	17.3		
Some college	160	20.6		165	21.3		
College graduate	75	9.7		72	9.3		
Graduate studies	54	7.0		65	8.4		
Missing	6	0.8		8	1.0		
Latitude, °							0.31
<35	154	19.9		148	19.1		
35–42	239	30.8		252	32.5		
>42	382	49.3		375	48.4		
Family history of any cancer							0.18
Yes	270	34.8		278	35.9		
No	277	35.7		310	40.0		
Missing	228	29.4		187	24.1		
Height, cm			172.7 (166.0–178.0)			172.0 (165.1–177.0)	<0.01
Body mass index, kg/m ²							0.01
<25.0	251	32.4		296	38.2		
25.0–29.9	316	40.8		299	38.6		
≥30.0	156	20.1		126	16.3		
Missing	52	6.7		54	7.0		
Cigarette smoking							<0.01
Never	208	26.8		250	32.3		
Former	193	24.9		173	22.3		
Current	366	47.2		345	44.5		
Missing	8	1.0		7	0.9		

Table continues

Statistical analyses were performed by using SAS software, versions 9.1.3 and 9.2 (SAS Institute, Inc., Cary, North Carolina). All meta-analyses were conducted by using the R function MiMa (25) in R version 2.8.1 (The R Foundation for Statistical Computing, Vienna, Austria).

RESULTS

Overall, the median follow-up time for cases (time from blood draw to case diagnosis) was 5.5 years (interquartile range: 2.7–9.9) (Table 1). Median circulating 25(OH)D for the kidney cancer cases and controls was 44.4 nmol/L

Table 2. Continued

Characteristic	Cases (N = 775)			Controls (N = 775)			P Value ^a
	No.	%	Median (Interquartile Range)	No.	%	Median (Interquartile Range)	
Current alcohol drinker							0.42
Yes	440	56.8		460	59.4		
No	230	29.7		221	28.5		
Missing	105	13.5		94	12.1		
Physical activity, intensity							0.04
Low/none	255	32.9		244	31.5		
Light	247	31.9		234	30.2		
Moderate	85	11.0		96	12.4		
Vigorous	90	11.6		121	15.6		
Missing	98	12.6		80	10.3		
History of high blood pressure							<0.01
Yes	267	34.5		206	26.6		
No	495	63.9		566	73.0		
Missing	13	1.7		3	0.4		
History of diabetes							0.68
Yes	52	6.7		50	6.5		
No	701	90.5		715	92.3		
Missing	22	2.8		10	1.3		
Supplement use characteristics							
Current supplement, any							0.88
Yes	171	22.1		171	22.1		
No	438	56.5		442	57.0		
Missing	166	21.4		162	20.9		
Current vitamin D supplement							0.32
Yes	37	4.8		44	5.7		
No	471	60.8		459	59.2		
Missing	267	34.5		272	35.1		
Current calcium supplement							0.79
Yes	98	12.6		105	13.5		
No	585	75.5		577	74.5		
Missing	92	11.9		93	12.0		
Dietary intake/day							
Energy, kcal			2,137.2 (1,647.8–2,712.3)			2,161.5 (1,653.7–2,799.1)	0.32
Vitamin D, IU			169.6 (115.6–248.5)			169.9 (112.2–241.4)	0.48
Calcium, mg			912.3 (622.0–1,385.4)			1,003.9 (610.6–1,383.5)	0.35
Fish, g			25.4 (13.8–43.0)			24.2 (12.6–42.9)	0.09
Dairy, g			251.8 (66.8–718.9)			262.8 (70.6–698.1)	0.93

^a Wald test from conditional logistic regression, excluding subjects with missing data.

(interquartile range: 30.7–62.9) and 45.4 nmol/L (interquartile range: 30.2–62.5), respectively ($P = 0.71$).

The distribution of selected characteristics of the cases and controls is shown in Table 2. Approximately 75% of the

participants were male, the majority were white (80.4% of cases and 80.1% of controls), and the median age at blood collection of both cases and controls, overall, was 60 years. For both males and females, cases were more likely than

Table 3. Odds Ratios and 95% Confidence Intervals for the Association Between Circulating 25(OH)D and Risk of Kidney Cancer Within the Cohort Consortium Vitamin D Pooling Project of Rarer Cancers, Overall and for Renal Cell Carcinoma Subtype and Cases Diagnosed More Than 2 Years After Blood Draw

	Circulating 25(OH)D, nmol/L												P Value
	<25		25–<37.5		37.5–<50		50–<75		75–<100		≥100		
	OR	95% CI	OR	95% CI	OR	95% CI	OR	95% CI	OR	95% CI	OR	95% CI	
All kidney cancers													
No. of cases	119		164		173		219		80		20		
No. of controls	136		152		144		240		75		28		
Crude	0.97	0.68, 1.37	1.16	0.85, 1.58	1.30	0.97, 1.74	1.0	Referent	1.14	0.78, 1.67	0.77	0.40, 1.45	0.76
Multivariate adjusted ^a	0.94	0.64, 1.37	1.18	0.84, 1.67	1.18	0.85, 1.62	1.0	Referent	1.19	0.78, 1.83	0.92	0.44, 1.92	0.86
Renal cell carcinomas													
No. of cases	111		145		155		202		77		18		
No. of controls	123		138		132		220		70		25		
Crude	0.99	0.69, 1.42	1.12	0.81, 1.56	1.27	0.94, 1.73	1.0	Referent	1.18	0.80, 1.75	0.76	0.39, 1.51	0.84
Multivariate adjusted ^a	0.94	0.63, 1.39	1.13	0.78, 1.63	1.12	0.80, 1.58	1.0	Referent	1.24	0.79, 1.93	0.96	0.43, 2.14	0.67
All kidney cancers diagnosed >2 years after blood draw													
No. of cases	106		129		146		185		51		16		
No. of controls	119		124		118		194		56		22		
Crude	0.95	0.65, 1.39	1.09	0.77, 1.54	1.30	0.94, 1.79	1.0	Referent	0.92	0.58, 1.44	0.71	0.34, 1.47	0.67
Multivariate adjusted ^a	0.91	0.61, 1.38	1.10	0.75, 1.63	1.15	0.80, 1.66	1.0	Referent	0.91	0.54, 1.52	0.79	0.33, 1.88	0.95

Abbreviations: CI, confidence interval; 25(OH)D, 25-hydroxyvitamin D; OR, odds ratio.

^a Conditional models were adjusted for education, body mass index, height, smoking status, history of high blood pressure, history of diabetes, and alcohol drinking.

controls to report a history of high blood pressure. Among males, but not females, cases were taller, had a higher mean body mass index, were more likely to be categorized as overweight or obese, and were more likely to report being a current smoker compared with controls (data not shown). There were no statistically significant differences among cases and controls with respect to dietary intake or supplement use variables.

As shown in Table 3, 25(OH)D concentrations were not significantly associated with the risk of developing kidney cancer for males and females combined (P -trend = 0.76). Adjustment for covariates that have been shown in previous studies to be associated with kidney cancer, including body mass index, height, smoking status, history of high blood pressure, current alcohol drinking, and education, did not significantly change the results (P -trend = 0.86). Similar results for the unadjusted and adjusted conditional logistic regression modeling were obtained when examining renal cell carcinomas only (P -trend = 0.67 for the multivariate-adjusted model) and when limiting the sample to cases diagnosed more than 2 years after blood draw and their matched controls (P -trend = 0.95 for the multivariate-adjusted model). After excluding subjects from the Alpha-Tocopherol, Beta-Carotene Cancer Prevention Study, who constituted 36.9% of the sample, the multivariate-adjusted

odds ratios for the highest and lowest categories of 25(OH)D tended to be more inverse at both the high and low extremes compared with the analysis including all cohorts (<25 nmol/L odds ratio (OR) = 0.75, 95% confidence interval (CI): 0.40, 1.41; ≥100 nmol/L OR = 0.57, 95% CI: 0.27, 1.17; P -trend = 0.32). Analyses using the pooled cohort-, sex-, and season-specific quartile cutpoints, as well as those using residual adjustment for season, showed no increase or decrease in risk of kidney cancer or renal cell carcinoma in the highest quartile compared with the lowest quartile of circulating 25(OH)D (data not shown).

In the analyses stratified by sex (Table 4), low concentrations of circulating 25(OH)D were not associated with kidney cancer risk for either males (OR = 1.04, 95% CI: 0.68, 1.58) or females (OR = 0.66, 95% CI: 0.24, 1.77). High 25(OH)D concentrations (≥75 nmol/L) were associated with a nonstatistically significant increased risk of kidney cancer for males (OR = 1.52, 95% CI: 0.95, 2.41), even after excluding cohort subjects from the Alpha-Tocopherol, Beta-Carotene Cancer Prevention Study (OR = 1.52, 95% CI: 0.89, 2.59). In contrast, among females, high concentrations of 25(OH)D were associated with a statistically significant decreased risk of kidney cancer (OR = 0.31, 95% CI: 0.12, 0.85). Overall, there was no statistical evidence of a sex–25(OH)D interaction (P = 0.42). No differences in

Table 4. Odds Ratios and 95% Confidence Intervals for the Association Between Circulating 25(OH)D and Risk of Kidney Cancer Within the Cohort Consortium Vitamin D Pooling Project of Rarer Cancers, by Sex and Season

Strata	Circulating 25(OH)D, nmol/L										P Trend
	<25		25–<37.5		37.5–<50		50–<75		≥75		
	OR	95% CI	OR	95% CI	OR	95% CI	OR	95% CI	OR	95% CI	
Males											
No. of cases	98		117		123		153		86		
No. of controls	113		108		102		179		75		
Multivariate adjusted ^a	1.04	0.68, 1.58	1.33	0.88, 2.01	1.36	0.94, 1.99	1.0	Referent	1.52	0.95, 2.41	0.67
Females											
No. of cases	21		47		50		66		14		
No. of controls	23		44		42		61		29		
Multivariate adjusted ^a	0.66	0.24, 1.77	0.84	0.41, 1.71	0.79	0.39, 1.60	1.0	Referent	0.31	0.12, 0.85	0.65
Winter^b											
No. of cases	97		101		90		83		27		
No. of controls	98		93		84		89		29		
Multivariate adjusted ^c	1.14	0.71, 1.84	1.25	0.79, 1.96	1.18	0.75, 1.85	1.0	Referent	0.99	0.52, 1.90	0.49
Summer^b											
No. of cases	22		63		83		136		73		
No. of controls	38		59		60		151		74		
Multivariate adjusted ^c	0.68	0.35, 1.31	1.09	0.66, 1.79	1.40	0.88, 2.21	1.0	Referent	1.26	0.78, 2.03	0.38

Abbreviations: CI, confidence interval; 25(OH)D, 25-hydroxyvitamin D; OR, odds ratio.

^a Conditional models were adjusted for education, body mass index, height, smoking status, history of high blood pressure, history of diabetes, and alcohol drinking.

^b Winter was defined as December–May and summer as June–November.

^c Unconditional models were adjusted for date of blood draw, age at blood collection, race, sex, education, body mass index, height, smoking status, history of high blood pressure, history of diabetes, and alcohol drinking.

the associations between circulating 25(OH)D and kidney cancer were observed for individuals who had their blood drawn in the winter season compared with individuals who had their blood drawn in the summer season.

The associations with kidney cancer for both low (<37.5 nmol/L) and high (≥75 nmol/L) concentrations of circulating 25(OH)D compared with the referent category of 50–<75 nmol/L in each of the contributing study populations are shown on Figure 1. Overall, the pooled odds ratios for the high and low categories of 25(OH)D versus the referent category were 1.01 (95% CI: 0.65, 1.58) and 1.12 (95% CI: 0.79, 1.59), respectively. The pooled odds ratios for males and females for the high category of 25(OH)D versus the referent category were 1.33 (95% CI: 0.80, 2.24) and 0.52 (95% CI: 0.06, 4.89), respectively. The pooled odds ratios for males and females for the lowest category of 25(OH)D versus the referent category were 1.07 (95% CI: 0.71, 1.61) and 0.73 (95% CI: 0.17, 3.22), respectively. There was no evidence of statistical heterogeneity across studies in any of the meta-analyses (data not shown). Results from analyses that excluded cohorts one at a time showed no substantial changes in the pooled odds ratios.

DISCUSSION

The findings from this large consortium-based prospective study do not support the hypothesis that circulating 25(OH)D concentrations are associated with the risk of kidney cancer overall or the renal cell carcinoma subtype. Although our data suggest a possible decrease in risk for females associated with high 25(OH)D concentrations (≥75 nmol/L), the linear trend was not statistically significant and the number of cases in this category was small ($n = 14$). The overall null results we report for kidney cancer are similar to the results examining circulating 25(OH)D in relation to the other VDPP rarer cancer outcomes, including endometrial cancer (26), ovarian cancer (27), upper gastrointestinal cancer (28), and non-Hodgkin lymphoma (29). In contrast, the data from VDPP indicate an increased risk of pancreatic cancer associated with 25(OH)D concentrations of 100 nmol/L or more (30).

Despite the fact that the kidney is a major organ for vitamin D metabolism and activity, few studies have been conducted on vitamin D and kidney cancer. To our knowledge, there are no prospective serum-based investigations, and all published studies examined dietary intake of vitamin D as a measure of vitamin D status. All but one of these

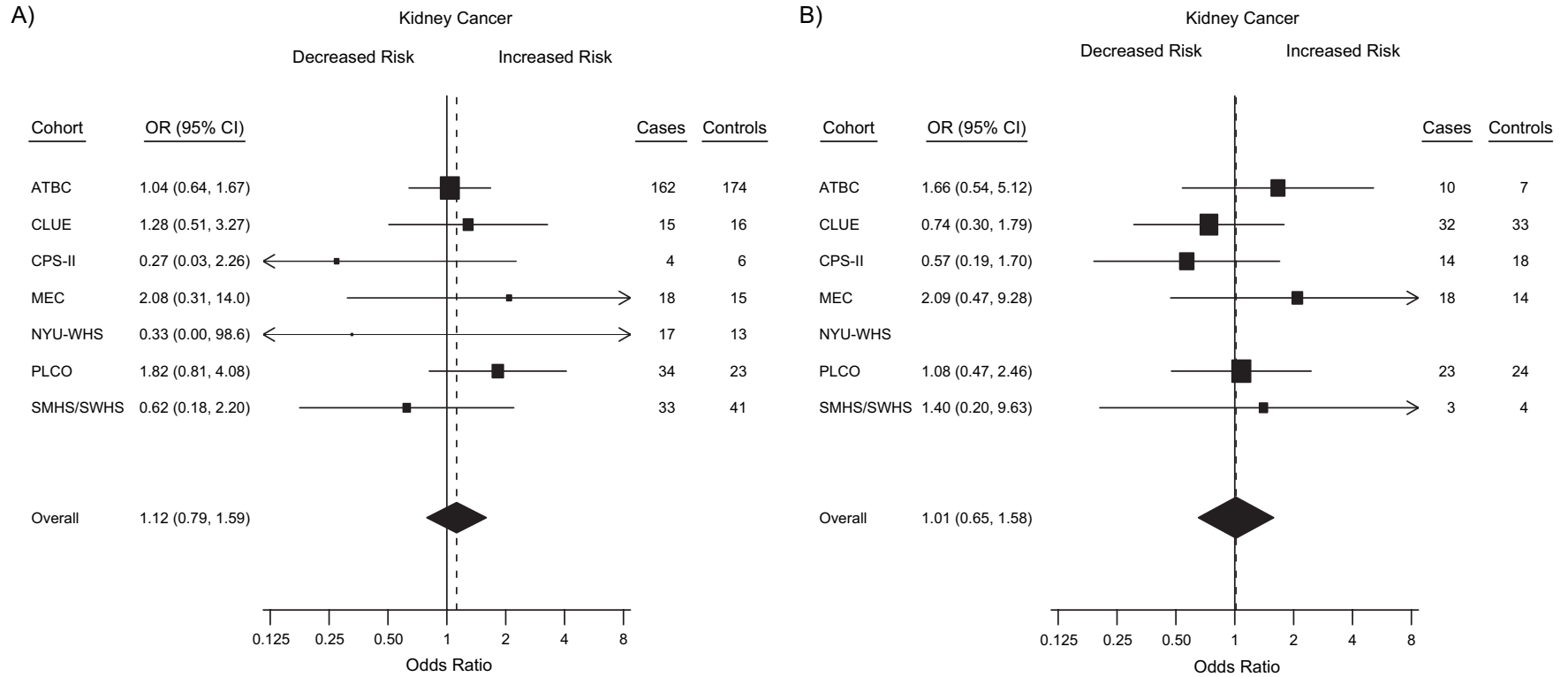


Figure 1. Forest plots for the meta-analysis of the association between circulating 25-hydroxyvitamin D (25(OH)D) and the risk of kidney cancer within the Cohort Consortium Vitamin D Pooling Project of Rarer Cancers. Risk estimates, by cohort, for subjects with circulating 25(OH)D concentrations of A) <37.5 nmol/L and B) ≥75 nmol/L compared with the referent group (50–<75 nmol/L). Odds ratios (ORs) and 95% confidence intervals (CIs) were derived from conditional logistic regression models adjusted for education, body mass index, height, smoking status, history of high blood pressure, history of diabetes, and alcohol drinking. The boxes show the odds ratios, the bars show the 95% confidence intervals, and the size of each box is inversely proportional to the variance of the log odds ratio estimate in each cohort. The overall estimates (diamonds) were derived from a meta-analysis using random-effects modeling. NYU-WHS data are not included in the highest versus reference category forest plot (B) because there were zero cases of kidney cancer among cases in the highest category. ATBC, Alpha-Tocopherol, Beta-Carotene Cancer Prevention Study; CPS-II, Cancer Prevention Study II Nutrition Cohort; MEC, Multiethnic Cohort Study; NYU-WHS, New York University Women’s Health Study; PLCO, Prostate, Lung, Colorectal and Ovarian Cancer Screening Trial; SMHS/SWHS, Shanghai Men’s Health Study/Shanghai Women’s Health Study.

studies, however, reported findings consistent with our overall null result. For example, prospective cohort studies of male smokers in Finland (the Alpha-Tocopherol, Beta-Carotene Cancer Prevention Study) and women in Iowa (the Iowa Women's Health Study) showed no statistically significant association between vitamin D intake and renal cell carcinoma after adjustment for age (15) and other potential confounders such as high blood pressure (17). Furthermore, a case-control study conducted in Denmark showed no association between the intake of individual foods rich in vitamin D (i.e., fish and eggs) and renal cell carcinoma risk (16), and a large case-control study conducted in central and eastern Europe observed no statistically significant increase or decrease in renal cell carcinoma risk with total vitamin D intake (31). In contrast, one Italian case-control study of 767 cases and 1,532 controls reported a statistically significant inverse association between dietary vitamin D intake, based on a 78-item food frequency questionnaire, and the risk of renal cell carcinoma; however, this finding was observed among only females (OR = 0.60), participants with a high body mass index (≥ 25 kg/m²) (OR = 0.65), and never smokers (OR = 0.61).

In general, studies, primarily ecologic, investigating the association between cancer risk and sun exposure have reported an inverse relation between kidney cancer incidence and mortality with ultraviolet B light exposure (12, 13, 32–34). For example, Mohr et al. (12) examined the association between ultraviolet B exposure and renal cancer risk in 175 countries using latitude and solar ultraviolet B irradiance. For both males and females, the highest renal carcinoma risk rates were found in countries situated at the highest latitudes. Furthermore, an occupational cohort study exploring the relation between ultraviolet exposure and cancer risk among Swedish male construction workers found that participants exposed to the highest level of occupational sunlight had a reduced kidney cancer risk (35). Additionally, a recent central and eastern European case-control study reported inverse associations between occupational ultraviolet exposure and renal cell carcinoma risk that, after stratification, were limited to males residing in the highest latitudes (36). Similar inverse associations in case-control studies have been reported between occupational sunlight exposures and other cancers such as diffuse large B-cell lymphoma, follicular lymphoma, and rectal and prostate cancer (refer, for example, to Boffetta et al. (37), Slattery et al. (38), and John et al. (39)).

A major strength of the present investigation is the inclusion of a large number of kidney cancer cases from multiple cohort studies that incorporated a wide range of vitamin D concentrations and latitudes. Furthermore, since the study is prospective, with vitamin D status assessed from blood samples collected before cancer diagnosis, the influence of reverse causality was minimized. Moreover, circulating 25(OH)D concentrations were assayed by a single laboratory to reduce interlaboratory variation. Additionally, this measure of vitamin D exposure represents an internal dose that includes the 2 major sources of vitamin D: sun exposure and intake. Finally, this study collected data on a number of potential confounders

such as high blood pressure and body mass index that were used in the analysis to allow for a more accurate estimation of the association between 25(OH)D and kidney cancer risk.

Limitations of our study include measurement of only a single blood sample; 25(OH)D measurements from multiple time points would have resulted in more precise estimates of exposure. However, it should be noted that data from several studies suggest that 25(OH)D concentrations are relatively stable when samples are collected during the same season in different years. For example, a study conducted in the New York University Women's Health Study found an intraclass correlation coefficient for circulating 25(OH)D of 0.78 (95% CI: 0.64, 0.88) in 30 healthy women who contributed 3 samples each at yearly intervals (Anne Zeleniuch-Jacquotte, New York University School of Medicine, personal communication, 2009). Other limitations include the possibility that the etiologically relevant time period of exposure was missed with the single blood sample and limited power to examine associations among subgroups with a small number of cases.

In summary, the combined data from 8 prospective cohort studies do not support the hypothesis that higher circulating 25(OH)D measured in prediagnostic blood specimens is associated with a decreased risk of kidney cancer overall or with renal cell carcinoma specifically.

ACKNOWLEDGMENTS

Author affiliations: The Prevention and Research Center, The Weinberg Center for Women's Health and Medicine, Mercy Medical Center, Baltimore, Maryland (Lisa Gallicchio, Kathy J. Helzlsouer); Department of Epidemiology, The Johns Hopkins Bloomberg School of Public Health, Baltimore, Maryland (Lisa Gallicchio, Kathy J. Helzlsouer); Epidemiology Research Program, American Cancer Society, Atlanta, Georgia (Victoria L. Stevens, Marjorie L. McCullough); Division of Cancer Epidemiology and Genetics, National Cancer Institute, Bethesda, Maryland (Lee E. Moore, Demetrius Albanes, Stephanie J. Weinstein, Kai Yu, Wong-Ho Chow, Mark P. Purdue); Department of Environmental Medicine, New York University School of Medicine, New York, New York (Jiyoung Ahn, Anne Zeleniuch-Jacquotte, Yu Chen, Karen L. Koenig); New York University Cancer Institute, New York, New York (Jiyoung Ahn, Anne Zeleniuch-Jacquotte, Yu Chen); The Scientific Consulting Group, Inc., Gaithersburg, Maryland (Virginia Hartmuller); Department of Preventive Medicine/Norris Comprehensive Cancer Center, Keck School of Medicine, University of Southern California, Los Angeles, California (V. Wendy Setiawan); Division of Epidemiology, Department of Medicine, Vanderbilt Epidemiology Center, Vanderbilt-Ingram Cancer Center, Vanderbilt University School of Medicine, Nashville, Tennessee (Gong Yang, Xiao-Ou Shu, Wei Zheng, Qiuyin Cai); Department of Epidemiology, Shanghai Cancer Institute, Shanghai, China (Yong-Bing Xiang); Information Management Services,

Inc., Silver Spring, Maryland (Kirk Snyder, David S. Campbell); Heartland Assays, Inc., Ames, Iowa (Ronald L. Horst); and Epidemiology Program, Cancer Research Center, University of Hawaii, Honolulu, Hawaii (Laurence N. Kolonel).

This work was supported by the Extramural Research Program of the National Institutes of Health, Division of Cancer Control and Population Sciences, National Cancer Institute (NCI) (Bethesda, Maryland) and the Intramural Research Program of the National Institutes of Health, Division of Cancer Epidemiology and Genetics, NCI. The New York University Women's Health Study was supported by the NCI (grant R01 CA098661). The Multiethnic Cohort Study was supported by the NCI (grants R37 CA54281, P01 CA33619, R01 CA063464, and N01-PC35137). The Shanghai Men's Health Study was supported by the NCI (grant R01 CA82729). The Shanghai Women's Health Study was supported by the NCI (grants R37 CA70867 and N02-CP-11010-66). The Prostate, Lung, Colorectal and Ovarian Cancer Screening Trial was supported by contracts from the NCI to the University of Colorado, Denver, Colorado (grant N01-CN-25514); Georgetown University, Washington, DC (grant N01-CN-25522); the Pacific Health Research Institute, Honolulu, Hawaii (grant N01-CN-25515); the Henry Ford Health System, Detroit, Michigan (grant N01-CN-25512); the University of Minnesota, Minneapolis, Minnesota (grant N01-CN-25513); Washington University, St. Louis, Missouri (grant N01-CN-25516); the University of Pittsburgh, Pittsburgh, Pennsylvania (grant N01-CN-25511); the University of Utah, Salt Lake City, Utah (grant N01-CN-25524); the Marshfield Clinic Research Foundation, Marshfield, Wisconsin (grant N01-CN-25518); the University of Alabama, Birmingham, Alabama (grant N01-CN-75022); Westat, Inc., Rockville, Maryland (grant N01-CN-25476); and the University of California, Los Angeles, Los Angeles, California (grant N01-CN-25404). The Alpha-Tocopherol, Beta-Carotene Cancer Prevention Study was supported by funding provided by the Intramural Research Program of the NCI and US Public Health Service contracts (N01-CN-45165, N01-RC-45035, N01-RC-37004). CLUE was supported by the National Institute on Aging (grant U01 AG018033) and the NCI (grants R01 CA105069, K07 CA73790). The participation of CLUE investigators was also supported by an NCI contract awarded to Mercy Medical Center through the University of Hawaii (Honolulu, Hawaii). The Cancer Prevention Study II Nutrition Cohort was supported by the American Cancer Society (Atlanta, Georgia).

The authors thank Dr. Karen Phinney of the National Institute of Standards and Technology for providing the SRM 972 Vitamin D in Human Serum used in this work.

Members of the VDPP Kidney Cancer Writing Committee: Lisa Gallicchio, Lee E. Moore, Victoria L. Stevens, Jiyoung Ahn, Demetrius Albanes, Virginia Hartmuller, V. Wendy Setiawan, Kathy J. Helzlsouer, Gong Yang, Yong-bing Xiang, and Karen L. Koenig.

This report is based at least in part on information provided by the Maryland Cancer Registry, Maryland Department of Health and Mental Hygiene.

Dr. Ronald L. Horst is the President and Chief Executive Officer of Heartland Assays, Inc.

REFERENCES

1. Stat bite: kidney cancer incidence, 2000–2003. *J Natl Cancer Inst.* 2006;98(17):1181.
2. Cohen HT, McGovern FJ. Renal-cell carcinoma. *N Engl J Med.* 2005;353(23):2477–2490.
3. Scélo G, Brennan P. The epidemiology of bladder and kidney cancer. *Nat Clin Pract Urol.* 2007;4(4):205–217.
4. Holick MF. Vitamin D deficiency. *N Engl J Med.* 2007;357(3):266–281.
5. Walters MR. Newly identified actions of the vitamin D endocrine system. *Endocr Rev.* 1992;13(4):719–764.
6. Horst RL, Reinhardt TA, Reddy GS. Vitamin D metabolism. In: Feldman D, Pike JW, Glorieux FH, eds. *Vitamin D*. Burlington, MA: Elsevier Academic Press; 2005:15–36.
7. Holick MF. Vitamin D: its role in cancer prevention and treatment. *Prog Biophys Mol Biol.* 2006;92(1):49–59.
8. Giovannucci E. Vitamin D status and cancer incidence and mortality. *Adv Exp Med Biol.* 2008;624:31–42.
9. Abbas S, Chang-Claude J, Linseisen J. Plasma 25-hydroxyvitamin D and premenopausal breast cancer risk in a German case-control study. *Int J Cancer.* 2009;124(1):250–255.
10. Lowe LC, Guy M, Mansi JL, et al. Plasma 25-hydroxy vitamin D concentrations, vitamin D receptor genotype and breast cancer risk in a UK Caucasian population. *Eur J Cancer.* 2005;41(8):1164–1169.
11. Bertone-Johnson ER, Chen WY, Holick MF, et al. Plasma 25-hydroxyvitamin D and 1,25-dihydroxyvitamin D and risk of breast cancer. *Cancer Epidemiol Biomarkers Prev.* 2005;14(8):1991–1997.
12. Mohr SB, Gorham ED, Garland CF, et al. Are low ultraviolet B and high animal protein intake associated with risk of renal cancer? *Int J Cancer.* 2006;119(11):2705–2709.
13. Boscoe FP, Schymura MJ. Solar ultraviolet-B exposure and cancer incidence and mortality in the United States, 1993–2002. *BMC Cancer.* 2006;6:264. (doi:10.1186/1471-2407-6-264).
14. Bosetti C, Scotti L, Maso LD, et al. Micronutrients and the risk of renal cell cancer: a case-control study from Italy. *Int J Cancer.* 2007;120(4):892–896.
15. Prineas RJ, Folsom AR, Zhang ZM, et al. Nutrition and other risk factors for renal cell carcinoma in postmenopausal women. *Epidemiology.* 1997;8(1):31–36.
16. Møllegaard A, McLaughlin JK, Overvad K, et al. Dietary risk factors for renal cell carcinoma in Denmark. *Eur J Cancer.* 1996;32A(4):673–682.
17. Wilson RT, Wang J, Chinchilli V, et al. Fish, vitamin D, and flavonoids in relation to renal cell cancer among smokers. *Am J Epidemiol.* 2009;170(6):717–729.
18. Gallicchio L, Helzlsouer KJ, Chow WH, et al. Circulating 25-hydroxyvitamin D and the risk of rarer cancers: design and methods of the Cohort Consortium Vitamin D Pooling Project of Rarer Cancers. *Am J Epidemiol.* 2010;172(1):10–20.
19. Looker AC, Dawson-Hughes B, Calvo MS, et al. Serum 25-hydroxyvitamin D status of adolescents and adults in two seasonal subpopulations from NHANES III. *Bone.* 2002;30(5):771–777.

20. Holick MF. Vitamin D status: measurement, interpretation, and clinical application. *Ann Epidemiol.* 2009;19(2):73–78.
21. Looker AC, Pfeiffer CM, Lacher DA, et al. Serum 25-hydroxyvitamin D status of the US population: 1988–1994 compared with 2000–2004. *Am J Clin Nutr.* 2008;88(6):1519–1527.
22. Giovannucci E, Liu Y, Rimm EB, et al. Prospective study of predictors of vitamin D status and cancer incidence and mortality in men. *J Natl Cancer Inst.* 2006;98(7):451–459.
23. Chiu BC, Gapstur SM, Chow WH, et al. Body mass index, physical activity, and risk of renal cell carcinoma. *Int J Obes (Lond).* 2006;30(6):940–947.
24. DerSimonian R, Laird N. Meta-analysis in clinical trials. *Control Clin Trials.* 1986;7(3):177–188.
25. Viechtbauer W. MiMa: an S-Plus/R function to fit meta-analytic mixed-, random-, and fixed-effects models [computer software and manual]. Maastricht, the Netherlands: Department of Methodology and Statistics, School for Public Health and Primary Care, Maastricht University; 2006. (<http://www.wvbauer.com/downloads.html>). (Accessed February 6, 2009).
26. Zeleniuch-Jacquotte A, Gallicchio L, Hartmuller V, et al. Circulating 25-hydroxyvitamin D and risk of endometrial cancer: Cohort Consortium Vitamin D Pooling Project of Rarer Cancers. *Am J Epidemiol.* 2010;172(1):36–46.
27. Zheng W, Danforth KN, Tworoger SS, et al. Circulating 25-hydroxyvitamin D and risk of epithelial ovarian cancer: Cohort Consortium Vitamin D Pooling Project of Rarer Cancers. *Am J Epidemiol.* 2010;172(1):70–80.
28. Abnet CC, Chen Y, Chow WH, et al. Circulating 25-hydroxyvitamin D and risk of esophageal and gastric cancer: Cohort Consortium Vitamin D Pooling Project of Rarer Cancers. *Am J Epidemiol.* 2010;172(1):94–106.
29. Purdue MP, Freedman DM, Gapstur SM, et al. Circulating 25-hydroxyvitamin D and risk of non-Hodgkin lymphoma: Cohort Consortium Vitamin D Pooling Project of Rarer Cancers. *Am J Epidemiol.* 2010;172(1):58–69.
30. Stolzenberg-Solomon RZ, Jacobs EJ, Arslan AA, et al. Circulating 25-hydroxyvitamin D and risk of pancreatic cancer: Cohort Consortium Vitamin D Pooling Project of Rarer Cancers. *Am J Epidemiol.* 2010;172(1):81–93.
31. Karami S, Brennan P, Navratilova M, et al. Vitamin D pathway genes, diet, and risk of renal cell carcinoma. *Int J Endocrinol.* 2010;2010:879362. (doi:10.1155/2010/879362).
32. Grant WB. The effect of solar UVB doses and vitamin D production, skin cancer action spectra, and smoking in explaining links between skin cancers and solid tumours. *Eur J Cancer.* 2008;44(1):12–15.
33. Grant WB, Garland CF. Evidence supporting the role of vitamin D in reducing the risk of cancer. *J Intern Med.* 2002;252(2):178–179.
34. Grant WB. An estimate of premature cancer mortality in the U.S. due to inadequate doses of solar ultraviolet-B radiation. *Cancer.* 2002;94(6):1867–1875.
35. Håkansson N, Floderus B, Gustavsson P, et al. Occupational sunlight exposure and cancer incidence among Swedish construction workers. *Epidemiology.* 2001;12(5):552–557.
36. Karami S, Boffetta P, Stewart P, et al. Occupational sunlight exposure and risk of renal carcinoma. *Cancer.* 2010;116(8):2001–2010.
37. Boffetta P, van der Hel O, Kricker A, et al. Exposure to ultraviolet radiation and risk of malignant lymphoma and multiple myeloma—a multicentre European case-control study. *Int J Epidemiol.* 2008;37(5):1080–1094.
38. Slattery ML, Neuhausen SL, Hoffman M, et al. Dietary calcium, vitamin D, VDR genotypes and colorectal cancer. *Int J Cancer.* 2004;111(5):750–756.
39. John EM, Schwartz GG, Koo J, et al. Sun exposure, vitamin D receptor gene polymorphisms, and risk of advanced prostate cancer. *Cancer Res.* 2005;65(12):5470–5479.