

RESEARCH ARTICLE

Open Access

Temporal dynamics of the very premature infant gut dominant microbiota

Fabien Aujoulat^{1†}, Laurent Roudière^{2†}, Jean-Charles Picaud³, Aurélien Jacquot⁵, Anne Filleron^{1,4}, Dorine Neveu⁶, Thierry-Pascal Baum⁶, Hélène Marchandin^{1,7} and Estelle Jumas-Bilak^{1,8*}

Abstract

Background: The very-preterm infant gut microbiota is increasingly explored due to its probable role in the development of life threatening diseases. Results of high-throughput studies validate and renew the interest in approaches with lower resolution such as PCR-Temporal Temperature Gel Electrophoresis (TTGE) for the follow-up of dominant microbiota dynamics. We report here an extensive longitudinal study of gut colonization in very preterm infants. We explored by 16S rDNA-based PCR-TTGE a total of 354 stool specimens sampled during routine monitoring from the 1st to the 8th week of life in 30 very pre-term infants born before 30 weeks of gestational age.

Results: Combining comparison with a diversity ladder and sequencing allowed affiliation of 50 Species-Level Operational Taxonomic Units (SLOTUs) as well as semi-quantitative estimation of Operational Taxonomic Units (OTUs). Coagulase-negative staphylococci, mainly the *Staphylococcus epidermidis*, was found in all the infants during the study period and was the most represented (75.7% of the SLOTUs) from the first days of life. Enterococci, present in 60% of the infants were early, highly represented and persistent colonizers of the premature gut. Later *Enterobacteriaceae* and the genus *Clostridium* appeared and were found in 10 (33%) and 21 infants (70%), respectively. We showed a high representation of *Veillonella* in more than a quarter of the infants and being able to persistently colonize premature gut. The genera *Anaerococcus*, *Aquabacterium*, *Bacillus*, *Bifidobacterium*, *Corynebacterium*, *Micrococcus*, *Oceanobacillus*, *Propionibacterium*, *Pseudomonas*, *Rothia*, *Sarcina*, *Sneathia* and *Streptococcus* were observed as transient or persistent colonizers, each genus being found in a minority of infants.

Conclusions: Despite low resolution, PCR-TTGE remains complementary to high-throughput sequencing-based approaches because it allows the follow-up of dominant bacteria in gut microbiota in a large longitudinal cohorts of preterm neonates. We described the development of pre-term gut microbiota that should be now replaced regarding the functional role of major OTUs.

Keywords: Extremely low birth weight Infant, Stool, Microbiota, Follow-up, PCR-TTGE, Diversity, Dynamics, *Staphylococcus*, *Enterococcus*, *Clostridium*, *Enterobacteriaceae*, *Veillonellaceae*

Background

Soon after birth, bacteria colonize the previously germ-free infant gastrointestinal tract. The colonizing bacteria participate to the barrier effect of the gut mucosa, facilitate carbohydrate assimilation, and modulate the immune

system. Therefore, the establishment and dynamics of gut microbiota have a great influence on the healthy development of the infant. Microbiota composition and its dynamics have been described for healthy neonates [1,2] and to a lesser extent for pre-term neonates [3-5]. Knowledge regarding the gut microbiota dynamics in very premature infants (<30 weeks of gestation) remains limited whereas digestive complications are frequent and life-threatening in this population, particularly in the case of necrotizing enterocolitis (NEC) [6]. In addition, disequilibrium in the gut bacterial community might increase the risk of late-onset sepsis (LOS) after disruption of the immature mucosal barrier, resulting in translocation of luminal contents [7].

* Correspondence: ebilak@univ-montp1.fr

†Equal contributors

¹Université Montpellier 1, UMR 5119 ECOSYM, Equipe Pathogènes et Environnements Unité de Bactériologie, U.F.R. des Sciences pharmaceutiques et biologiques, 15, Avenue Charles Flahault, BP 14491, Montpellier, Cedex 5 34093, France

⁸Centre Hospitalier Universitaire de Montpellier, Laboratoire d'Hygiène hospitalière, 778, Rue de la Croix Verte, Montpellier 34000, France
Full list of author information is available at the end of the article

The impact of some bacterial species on the infant health and growth has been underlined [8]. For instance, De la Cochetière *et al.* showed by a molecular-based method that *Clostridium perfringens* appeared in the first 2 weeks of life in 3 infants who later developed a NEC [9]. More recently, unclassified bacteria of the family *Enterobacteriaceae* appeared to be associated with NEC [10]. On the opposite, bifidobacteria are considered to enhance installation and equilibrium of the microbiota, especially by maintaining the intestinal microbial balance and inhibiting the growth of pathogens [11,12]. However, the role of a single bacterium in health or diseases is doubtful [13,14] and one hypothesis is that inappropriate dynamics of gut colonization involving distortion and disequilibrium of the microbiota can cause NEC [8,10] and LOS [7].

Knowledge about the microbiota development arising from the chronological follow-up of extremely premature infants stool bacteria was initially based on culture studies. Among numerous studies, Sakata *et al.* (1985) [3] reported the longer study period (day 1 to day 49) but included only 7 infants. Other studies usually included more infants (26 to 99) with variable median gestational age (GA) (26 to 33 weeks) and follow-up period (one week to one month) [15-25]. Molecular methods have complemented or replaced cultural approaches for the study of complex ecosystems such as human resident microbiota [26]. The 16S ribosomal RNA (16S rRNA) gene-based PCR in association with sequence-specific separation tools such as T-RFLP (Terminal Restriction Fragment Length Polymorphism) [27,28], DGGE (Denaturing Gradient Gel Electrophoresis) [10,29-31] and TTGE (Temporal Temperature Gradient Gel Electrophoresis) [4,9,24,32,33] were used for studying bacterial gut communities in the premature population. More recently, studies based on pyrosequencing technology used deeper molecular analysis of the gut-associated microbiota of preterm infants. These studies revealed previously unappreciated biodiversity [5,31,34,35], including that of viruses and fungi [35]. However, this descriptive power is often underexploited, most high-throughput sequencing-based data being interpreted at the phylum level or with a focus on dominant Operational Taxonomic Units (OTUs) [10,31]. Exception is a recent metagenomic study that track strain level variations in 11 fecal samples chronologically collected in one premature infant [36 ref].

Considering dominant OTUs and high-level taxonomic ranks, fingerprint-based methods and high-throughput sequencing gave roughly congruent results [35]. Therefore, results of high-throughput studies validate approaches with lower resolution such as PCR-TTGE for dominant OTUs detection. PCR-TTGE allows a snapshot of the dominant microbiota and a monitoring of microbiota dynamics by identification of the dominant OTUs and

analysis of multiple serial specimens in large population of preterm infants. We previously proposed an optimized approach for studying premature infant gut microbiota by PCR-TTGE and showed its reliability for bacterial identification and semi-quantitative estimation by comparison with culture [24]. This approach demonstrated a positive relationship between the diversity of the intestinal microbiota, digestive tolerance and weight gain in very preterm infants [33].

The aim of this longitudinal study was to describe the temporal dynamics of bacterial diversity in very preterm infant stools by a low-resolution focusing on dominant gut microbiota. Thirty infants born before 30 weeks of gestation were included, and a mean of 12 stool samples per infant were obtained chronologically from the 1st to the 8th week of life. A total of 354 stool samples were collected.

Results and discussion

Diversity of species-level operational taxonomic units

We analyzed 354 samples obtained from 30 patients. Figure 1 shows a representative TTGE gel corresponding to the chronological follow-up of the gut microbiota of the infant D. No DNA amplification was obtained for 14 samples from 11 infants (period of sampling: J3 to J23). Among the 1772 TTGE bands detected, 440 corresponded to artifactual bands, mainly heteroduplexes. This result underlined the high frequency occurrence of PCR artifacts when bacterial community was analyzed. If they remained unrecognized, they could lead to overestimated diversity. A total of 93 bands (7%) could not be analyzed because they did not correspond to bands present in the diversity ladder and because they were too faint to be cut and sequenced. Finally, 1239 bands were affiliated to a Species-Level Operational Taxonomic Unit (SLOTU). Our approach combining sequencing and comparison to a diversity ladder allowed artifact exclusion and SLOTU affiliation for about 93% of the bands with a sequencing effort of only 189 bands. We identified 50 different SLOTUs that reflected the overall microbiota diversity in 30 patients. The number of SLOTUs per patient varied from 0 to 13. The diversity was probably underestimated because among the 93 bands not affiliated to a SLOTU, 37 different distances of migration were distinguished. In a previous study associating TTGE and cloning/sequencing approaches, 288 clones were sequenced and 25 different SLOTUs were described [4]. A comprehensive culture-based study of the microbiota of preterm neonates of less than 1000 g surveyed during 30 days showed a total diversity of 20 bacterial species [19]. Comparatively with these previous approaches, we describe a wider bacterial diversity in stool samples of preterm neonates.

The 50 SLOTUs were distributed in 19 genera or families named Genus-Level Operational Taxonomic Unit

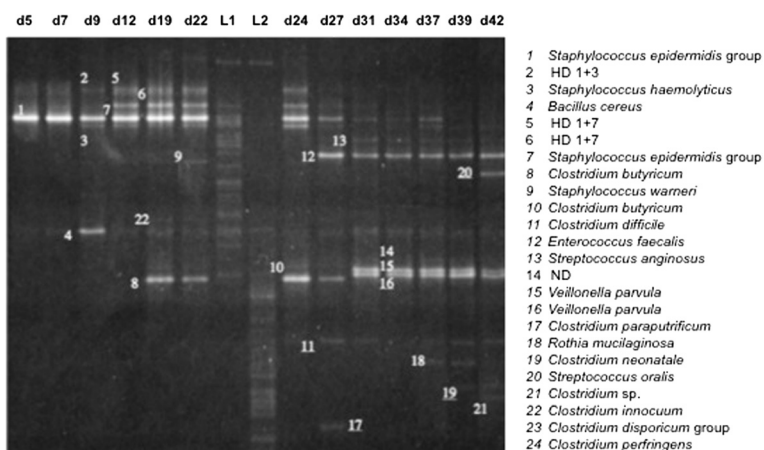


Figure 1 Representative TTGE gel obtained for the chronological follow-up of patient D from day 5 (d5) to day 45 (d45). Bands were identified with a number on the gel that corresponded to SLOTU identification. HD for heteroduplex band followed by the numbering of the bands forming the HD band. ND for not determined. L1 and L2 corresponded to the diversity ladders.

(GLOTU), which were defined on the basis of bacterial taxonomy (Table 1; Figure 2). The genera *Escherichia*, *Enterobacter* and *Klebsiella* were grouped in *Enterobacteriaceae* owing to the 16S rRNA gene relatedness among the genera of this family. The species *Clostridium innocuum* was affiliated to *Erysipelotrichaceae* because it does not belong to the genus *Clostridium* despite confusing nomenclature. The TTGE bands were distributed in each GLOTU as presented in Figure 2. Seven GLOTUs represented from 1.5% to 53.6% of total TTGE bands, *Staphylococcus*, *Clostridium*, *Enterococcus*, *Veillonella*, *Enterobacteriaceae*, *Streptococcus* and *Bifidobacterium*. Each other GLOTU represented 1% or less of the total TTGE bands (Figure 2).

As expected, pyrosequencing approaches detected more SLOTUs but most of them belonged to minority populations, each representing less than 1% of the total diversity [35]. Again, higher genus-level diversity was reported with high-throughput sequencing methods revealing up to 365 genera in the fecal microbiota of premature infants [7,10]. However, LaTuga *et al.* [35] showed that 1 to 2 genera out of the 61 found in their study comprised over 90% of the sequences in most individual samples [35].

To determine the relative repartition of high-level taxa per patient, the GLOTUs were grouped in their corresponding phylum or class for the phylum *Firmicutes* to form PLOTUs (Phylum-Level Operational Taxonomic Units). The bacteria described belonged to the 6 following PLOTUS: phyla *Actinobacteria*, *Proteobacteria*, *Fusobacteria* and classes *Bacilli*, *Clostridia* and *Negativicutes* in the phylum *Firmicutes*. Although most patients carried only 2 to 4 PLOTUs, we observed important variations among patients (Figure 3). The *Firmicutes* represented the large majority of SLOTUs in all patients and 9 patients harboured only *Firmicutes*. *Bacilli* was the sole and generally

predominating PLOTU found in all neonates and was the only PLOTU recovered in 3 patients. Beside *Bacilli*, *Clostridia* was the most represented PLOTU found in 21 neonates. Finally, Gram-positive bacteria largely dominated the bacterial community since they represented 88% of the identified SLOTUs.

High-throughput sequencing methods revealed higher diversity than we observed herein but the 3 dominant phyla (*Firmicutes*, *Actinobacteria*, *Proteobacteria*) were concordantly found [5,7,10,35]. However, discrepancies between studies were observed for the phylum *Bacteroidetes*, most often found as a rarely represented phylum while representing about 8% of the sequences in the study by Mai *et al.* [7]. Surprisingly, members of the phylum *Fusobacteria* found in our study were not reported by these sequencing-based studies [5,7,10,35]. The phylum diversity was not markedly higher in the gut microbiota of adults and infants. Ten phyla were detected in the stool specimens of the 242 adults included in the Human Microbiome Project but this number generally decreases to 3 to 4 phyla if each subject is considered [37].

In adults and weaning children, *Bacteroidetes* is the major bacterial phylum constituent of the gut microbiota followed by *Firmicutes* such as *Eubacterium*, *Ruminococcus* and *Clostridium*. In the extreme premature neonates studied herein, *Firmicutes* appeared the major component of the gut microbiota but *Bacteroidetes* were unrepresented (Figure 2). Members of *Firmicutes* differed from those described in adults since the class *Bacilli* with the genera *Staphylococcus*, *Streptococcus* and *Enterococcus* was the most represented. Members of the class *Negativicutes* were also well represented.

Finally, although PCR-TTGE lacks sensitivity in the detection of minority population, major GLOTUs and

Table 1 Frequency and semi-quantitative estimation of OTUs within samples and infants

Species-level OTU ^a (n = 50)	Genus and/or family-level OTUs (n = 19)	Samples with OTU n (%) ^c	Infants with OTU n (%) ^d	Period of detection (day)	Semi-quantitative score (band intensity) ^e		
					1 (+) n (%) of bands	2 (++) n (%) of bands	3 (+++) n (%) of bands
<i>Staphylococcus epidermidis</i> group*	<i>Staphylococcus</i>	268 (75.7%)	30 (100%)	d3-d53	45 (16.8%)	67 (25%)	156 (58.2%)
<i>Staphylococcus haemolyticus</i> *	<i>Staphylococcus</i>	185 (52.3%)	26 (86.7%)	d4-d51	34 (18.4%)	69 (37.3%)	82 (44.3%)
<i>Staphylococcus warneri</i> *	<i>Staphylococcus</i>	45 (12.7%)	16 (53.3%)	d3-d33	10 (22.2%)	16 (35.6%)	19 (42.2%)
<i>Staphylococcus hominis</i> *	<i>Staphylococcus</i>	13 (13.7%)	6 (20%)	d7-d45	4 (30.8%)	4 (30.8%)	5 (38.4%)
<i>Staphylococcus</i> sp.	<i>Staphylococcus</i>	6 (1.7%)	3 (10%)	d3-d25	2 (33.3%)	3 (50%)	1 (16.7%)
<i>Staphylococcus cohnii</i>	<i>Staphylococcus</i>	4 (1.1%)	1 (3.3%)	d27-d33	4 (100%)	0	0
ND ^b	Not determined	93 (26.3%)	24 (80%)	d3-d56	60 (64.5%)	16 (17.2%)	17 (18.3%)
<i>Enterococcus faecalis</i>	<i>Enterococcus</i>	98 (27.7%)	18 (60%)	d3-d56	13 (13.3%)	19 (19.4%)	66 (67.3%)
<i>Enterococcus durans</i> group	<i>Enterococcus</i>	7 (2%)	2 (6.7%)	d31-d53	1 (14.3%)	2 (28.6%)	4 (57.1%)
<i>Clostridium butyricum</i> *	<i>Clostridium/Clostridiaceae</i>	40 (11.3%)	12 (40%)	d18-d53	8 (20%)	11 (27.5%)	21 (52.5%)
<i>Clostridium difficile</i> *	<i>Clostridium/Clostridiaceae</i>	34 (9.6%)	11 (36.7%)	d24-d56	14 (41.2%)	17 (50%)	3 (8.8%)
<i>Clostridium neonatale</i>	<i>Clostridium/Clostridiaceae</i>	29 (8.2%)	10 (33.3%)	d16-d53	12 (41.4%)	12 (41.4%)	5 (17.2%)
<i>Clostridium perfringens</i>	<i>Clostridium/Clostridiaceae</i>	23 (6.5%)	9 (30%)	d17-d50	8 (34.8%)	4 (17.4%)	11 (47.8%)
<i>Clostridium</i> sp.	<i>Clostridium/Clostridiaceae</i>	9 (2.5%)	4 (13.3%)	d27-d42	6 (66.7%)	1 (11.1%)	2 (22.2%)
<i>Clostridium paraputrificum</i>	<i>Clostridium/Clostridiaceae</i>	5 (1.4%)	3 (10%)	d15-d18	2 (40%)	2 (40%)	1 (20%)
<i>Clostridium tertium</i>	<i>Clostridium/Clostridiaceae</i>	9 (2.5%)	3 (10%)	d22-d49	3 (33.3%)	3 (33.3%)	3 (33.3%)
<i>Clostridium disporicum</i> group	<i>Clostridium/Clostridiaceae</i>	5 (1.4%)	2 (6.7%)	d15-d24	2 (40%)	2 (40%)	1 (20%)
<i>Clostridium corinoforum</i>	<i>Clostridium/Clostridiaceae</i>	1 (0.3%)	1 (3.3%)	d34	1 (100%)	0	0
<i>Clostridium glycolicum</i> *	<i>Clostridium/Clostridiaceae</i>	1 (0.3%)	1 (3.3%)	d50	1 (100%)	0	0
<i>Clostridium favosporum</i>	<i>Clostridium/Clostridiaceae</i>	5 (1.4%)	1 (3.3%)	d31-d50	3 (60%)	1 (20%)	1 (20%)
<i>Clostridium symbiosum</i> group	<i>Clostridium/Clostridiaceae</i>	2 (0.6%)	1 (3.3%)	d21-d27	0	1 (50%)	1 (50%)
<i>Sarcina ventriculi</i>	<i>Sarcina/Clostridiaceae</i>	1 (0.3%)	1 (3.3%)	d17	0	0	1 (100%)
<i>Escherichia coli</i> *	<i>Enterobacteriaceae</i>	22 (6.2%)	8 (26.7%)	d6-d56	11 (50%)	0	11 (50%)
<i>Klebsiella oxytoca</i>	<i>Enterobacteriaceae</i>	13 (3.7%)	4 (13.3%)	d12-d56	4 (30.8%)	1 (7.7%)	8 (61.5%)
<i>Klebsiella pneumoniae</i>	<i>Enterobacteriaceae</i>	3 (0.8%)	2 (6.7%)	d39-d49	0	0	3 (100%)
<i>Enterobacter cloacae</i>	<i>Enterobacteriaceae</i>	5 (1.4%)	1 (3.3%)	d38-d56	1 (20%)	0	4 (80%)
<i>Veillonella dispar</i>	<i>Veillonella</i>	31 (8.8%)	6 (20%)	d4-d56	20 (64.5%)	3 (9.7%)	8 (25.8%)
<i>Veillonella parvula</i>	<i>Veillonella</i>	9 (2.5%)	3 (10%)	d28-d45	1 (11.1%)	5 (55.6%)	3 (33.3%)
<i>Veillonella</i> sp.	<i>Veillonella</i>	7 (2%)	2 (6.7%)	d19-d42	2 (28.6%)	2 (28.6%)	3 (42.8%)
<i>Rothia mucilaginosa</i>	<i>Rothia</i>	10 (2.8%)	4 (13.3%)	d37-d52	3 (30%)	3 (30%)	4 (40%)
<i>Aquabacterium commune</i> *	<i>Aquabacterium/Burkholderiales</i>	7 (2%)	4 (13.3%)	d3-d41	5 (71.4%)	2 (28.6%)	0
<i>Aquabacterium citratiphilum</i> *	<i>Aquabacterium/Burkholderiales</i>	2 (0.6%)	1 (3.3%)	28-d30	1 (50%)	1 (50%)	0
<i>Burkholderiales</i> ND	<i>Burkholderiales</i>	7 (2%)	1 (3.3%)	d16-d33	5 (71.4%)	1 (14.3%)	1 (14.3%)
<i>Streptococcus oralis</i> group	<i>Streptococcus</i>	4 (1.1%)	3 (10%)	d24-d50	2 (50%)	1 (25%)	1 (25%)
<i>Streptococcus salivarius</i>	<i>Streptococcus</i>	10 (2.8%)	2 (6.7%)	d31-d56	5 (50%)	5 (50%)	0
<i>Streptococcus anginosus</i>	<i>Streptococcus</i>	1 (0.3%)	1 (3.3%)	d3	0	0	1 (100%)
<i>Streptococcus oralis/parasanguinis</i>	<i>Streptococcus</i>	1 (0.3%)	1 (3.3%)	d49	1 (100%)	0	0
<i>Streptococcus parasanguinis</i> group	<i>Streptococcus</i>	1 (0.3%)	1 (3.3%)	d42	0	1 (100%)	0
<i>Streptococcus sanguinis</i> group	<i>Streptococcus</i>	1 (0.3%)	1 (3.3%)	d28	1 (100%)	0	0

Table 1 Frequency and semi-quantitative estimation of OTUs within samples and infants (Continued)

<i>Streptococcus thermophilus</i>	<i>Streptococcus</i>	5 (1.4%)	1 (3.3%)	d16-d28	2 (40%)	1 (20%)	2 (40%)
<i>Bacillus cereus</i> group	<i>Bacillus/Bacillaceae</i>	4 (1.1%)	4 (13.3%)	d9-d56	3 (75%)	0	1 (25%)
<i>Oceanobacillus</i> sp.	<i>Oceanobacillus/Bacillaceae</i>	3 (0.8%)	1 (3.3%)	d18-d24	3 (100%)	0	0
<i>Bifidobacterium breve</i> *	<i>Bifidobacterium</i>	9 (2.5%)	2 (6.7%)	d3-d49	3 (33.3%)	6 (66.7%)	0
<i>Bifidobacterium longum</i>	<i>Bifidobacterium</i>	5 (1.4%)	2 (6.7%)	d22-d50	3 (60%)	2 (40%)	0
<i>Clostridium innocuum</i>	<i>Erysipelotrichaceae</i>	9 (2.5%)	1 (3.3%)	d10-d36	3 (33.3%)	6 (66.7%)	0
<i>Propionibacterium</i> sp.	<i>Propionibacterium</i>	3 (0.8%)	1 (3.3%)	d18-d24	1 (33.3%)	0	2 (66.7%)
<i>Propionibacterium acnes</i>	<i>Propionibacterium</i>	2 (0.6%)	1 (3.3%)	d43-d45	0	2 (100%)	0
<i>Snethia sanguinegens</i>	<i>Snethia</i>	2 (0.6%)	1 (3.3%)	d3-d4	1 (50%)	0	1 (50%)
<i>Pseudomonas</i> sp.	<i>Pseudomonas</i>	1 (0.3%)	1 (3.3%)	d37	0	1 (100%)	0
<i>Anaerococcus octavius</i>	<i>Anaerococcus</i>	2 (0.6%)	1 (3.3%)	d32-d37	0	2 (100%)	0
<i>Corynebacterium tuberculostearicum</i>	<i>Corynebacterium</i>	2 (0.6%)	1 (3.3%)	d14-d15	0	2 (100%)	0

^aOTUs are indicated by main groups of decreasing occurrence among the 30 preterm infants.

^bND, OTU not determined (not included in the total SLOTU number of 50): the group included bands with 37 distinct migration distances.

^cNumber and % of samples with OTU among the 354 samples, bold type indicates the species-level OTU mostly represented in samples within the corresponding genus and/or family-level OTU.

^dNumber and % of preterm infants with OTU among the 30 neonates, bold type indicates the species-level OTU mostly represented in neonates within the corresponding genus and/or family-level OTU.

^eBold type indicates the most frequent semi-quantitative score observed for the OTU within PCR-TTGE patterns.

*OTU identified in patient ZA with NEC.

PLOTUs were detected in accordance with molecular methods with higher throughput.

Dynamics of extremely premature infant gut microbiota

We studied the repartition of the 5 major GLOTUs per infant and per age post-delivery. The Figure 4A shows the relative proportion of infants displaying each major GLOTU and the weekly development of the GLOTUs' occurrence. The only GLOTU shared by all the infants and found in more than 75% of the analysed samples

was *Staphylococcus* spp. The percentage of infants colonized with enterococci, clostridia and enterobacteria increased over the survey period, markedly towards the 5th week of life when the percentage of neonates carrying staphylococci began to decrease. The increase in members of the family *Enterobacteriaceae* was slightly delayed compared to the Gram-positive bacteria, enterococci and clostridia. In a previous study, we showed a global congruence between a semi-quantitative score calculated from intensity of TTGE bands and the number of colony-forming

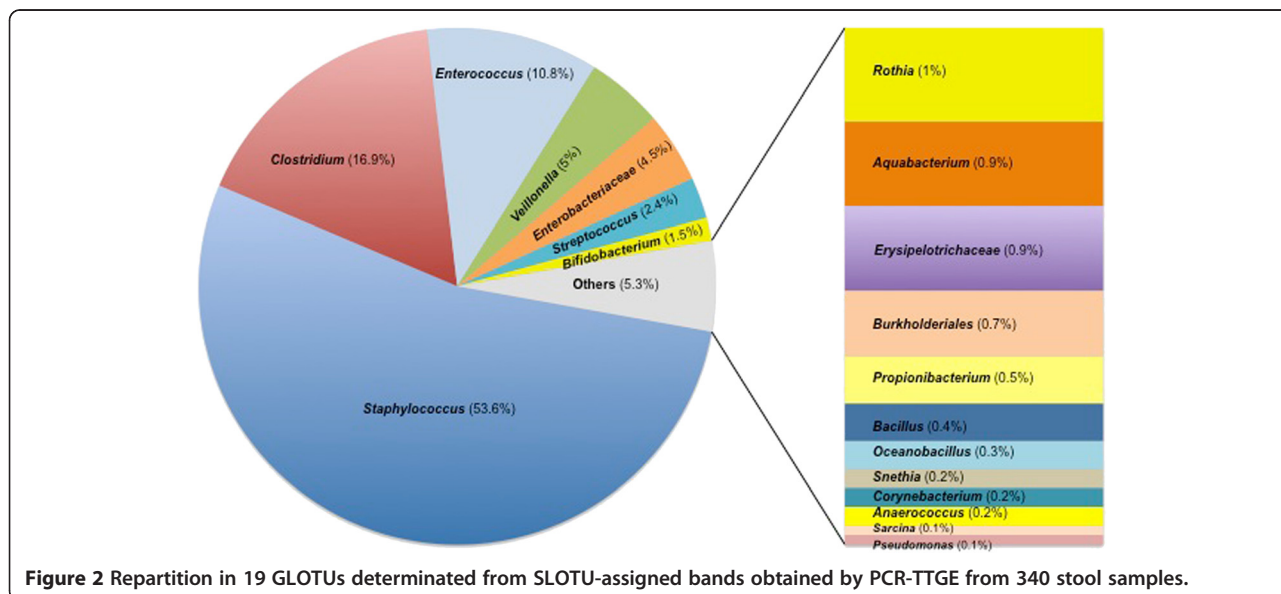
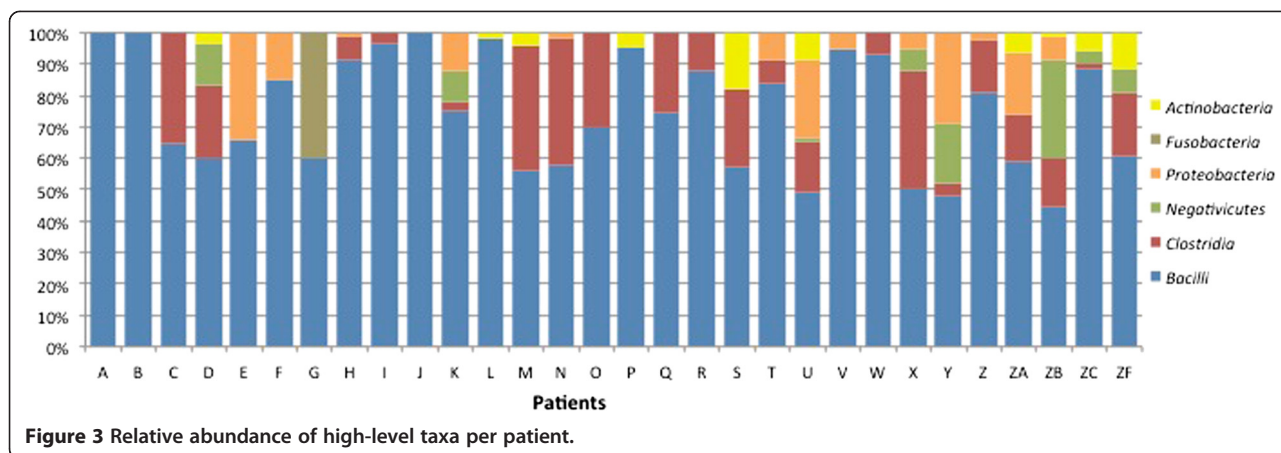


Figure 2 Repartition in 19 GLOTUs determined from SLOTU-assigned bands obtained by PCR-TTGE from 340 stool samples.



units (CFU), thereby validating the semi-quantitative approach based on band intensity [24]. We explored here the semi-quantitative dynamics of the major GLOTUs detected in the gut flora of the 30 neonates (Figure 4B). We showed that *Staphylococcus*, *Enterococcus* and *Enterobacteriaceae* successively dominated the very preterm neonate gut microbiota. Indeed, the semi-quantitative approach

showed that *Staphylococcus* was the predominant population for the first 3 weeks of life followed by enterococci from the 4th to the 6th week of life and then by enterobacteria (Figure 4B). Semi-quantification of *Clostridium* showed they did not vary significantly over time (Figure 4B). Detailed microbiota composition over time is given for the 30 patients in the Additional file 1:

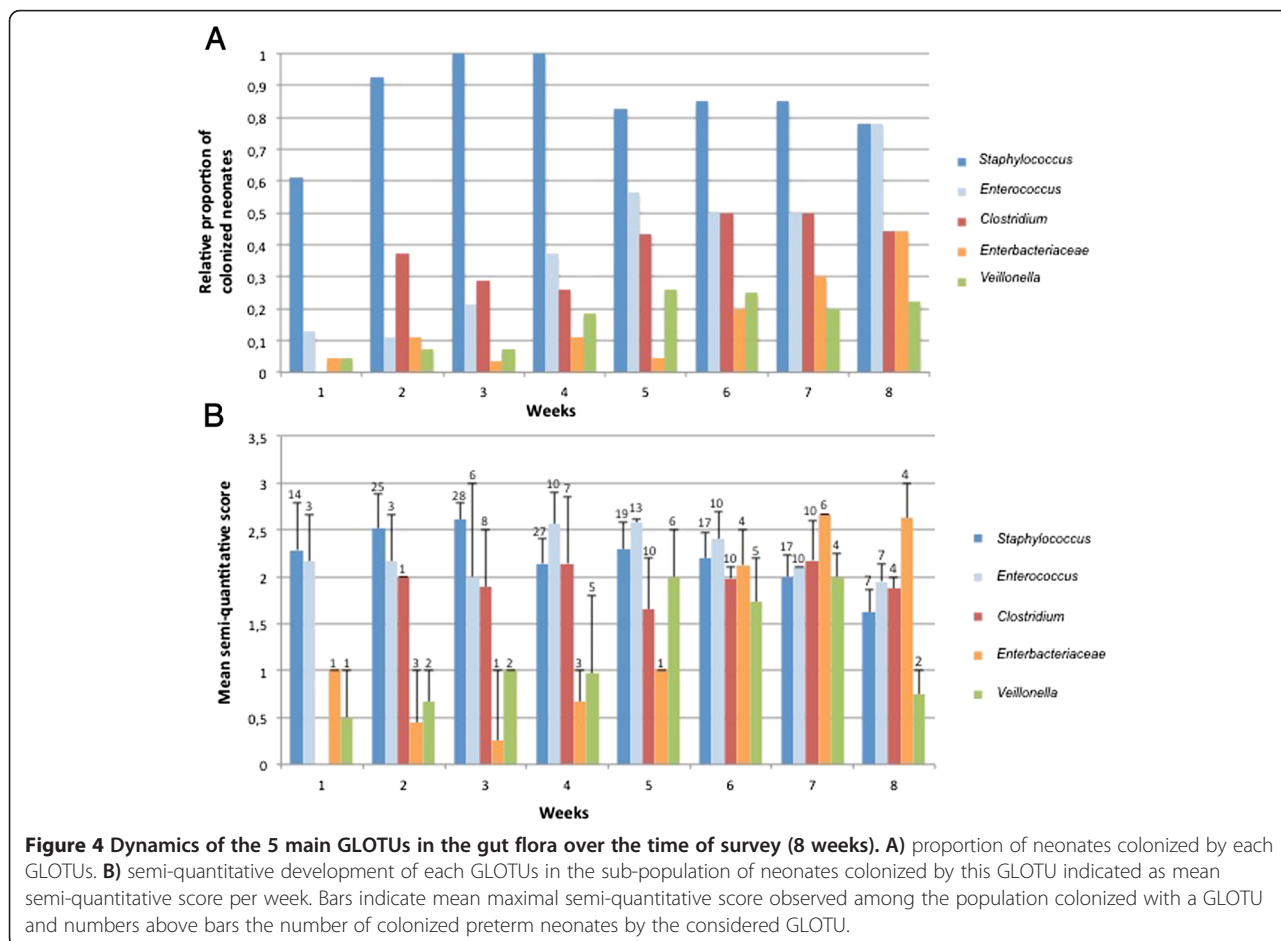


Table S1 together with semi-quantitative scores deduced from band intensity for each OTU occurrence (Additional file 1: Table S1). Less than 25% of the patients carried each minor GLOTU whatever the date after delivery and their qualitative or semi-quantitative (Additional file 1: Table S1) representation did not change significantly with the date of sampling.

Staphylococci dominate the extremely premature infants gut microbiota

The genus *Staphylococcus* represented 53.6% of bands affiliated to a SLOTU (Figure 2). All infants carried *Staphylococcus* spp. at least once over the follow-up period. Up to four staphylococcal OTUs may be found in an infant (n = 4, 13.3% of the infants) but successive or concomitant colonization by 3 OTUs was observed in most infants (n = 17, 57%). For most neonates, staphylococci appeared during the first week of life and persisted up to the 8th week post-delivery with a slight decrease in colonized infants after the 4th week (Figure 4A). The semi-quantitative approach showed that staphylococci quantitatively dominate the gut microbiota up to the third week of life (Figure 4B). Most of the staphylococci were coagulase-negative staphylococci (CoNS) belonging to the *S. epidermidis* genomic group defined by DNA-DNA hybridization and 16S rRNA gene phylogeny that included *S. epidermidis*, *S. caprae*, *S. capitis*, *S. aureus* and *Staphylococcus warneri* [38,39]. In this group of genetically very related species, *S. warneri* displayed particular TTGE behaviour and therefore could be identified separately. Different behaviours were observed for the CoNS species found in this study. Contrarily to other species, *S. warneri* was only found in the first month of life (Table 1). Colonization by a CoNS species may be transient as observed for *S. warneri* but also for *S. hominis* and *Staphylococcus cohnii* while *S. epidermidis* and *S. haemolyticus* usually appeared as persistent colonizers over the study period. After first detection, these two species were indeed found in more than 50% of the subsequent samples in 29 out of the 30 and in 20 out of the 26 infants colonized by each species, respectively.

CoNS predominance could be considered as a specific trait of the extremely premature infant gut microbiota fed by human pasteurised milk since staphylococci appeared as a minor or an unrepresented population in the gut community of adults [40,41] or infants born at term, whatever their feeding pattern [2,41]. CoNS have received a marginal attention for their role in the early colonization of the premature and extremely premature infant gut microbiota. Few studies reported the detection of CoNS in neonate stools by culture, with controversial results concerning the load and the prevalence of these bacteria [3,42,43]. Molecular-based studies also detected staphylococci that seemed to dominate the extremely

premature infant gut microbiota in the first weeks of life [4,9]. In these studies, predominance of CoNS was observed in only few cases due a low number of extremely preterm neonates included [9] or to the low sampling effort in each patient [4].

CoNS also retained attention since they are the major cause of LOS in neonatal intensive care unit (NICU) [44]. CoNS were supposedly acquired postnatally [44] and sometimes during nosocomial outbreaks [45]. The gut has recently been described as a reservoir of CoNS implicated in late-onset infections of extremely premature infants [46] and distortion in gut microbiota seemed to be related to LOS [7]. The breast-feeding origin of the neonate gut colonization by CoNS has been suspected because of the high prevalence of *S. epidermidis* in the milk of lactating women [47].

Clostridium spp

16.9% of the TTGE bands obtained in this study corresponded to sequences affiliated to *Clostridium* spp. The genus *Clostridium* appeared as the most diverse since it was represented by 12 different SLOTUs (Table). *Clostridium difficile* (34 samples from 11 patients), *Clostridium neonatale* (29 samples from 10 patients), *Clostridium butyricum* (40 samples from 12 patients) and *Clostridium perfringens* (23 samples from 9 patients) were the most represented SLOTUs. Each other minor *Clostridium* SLOTU was found in 1 to 4 patients. Infants may be colonized by up to 5 clostridial OTUs (n = 4) but more frequently harboured 2 (n = 5) to 3 (n = 6) OTUs during the study period. *Clostridium* represented qualitatively a major group among the premature neonate gut microbial community (Figure 4A), colonizing 70% (n = 21) of the infants over the study period. The percent of *Clostridium* colonization of premature neonates is congruent with the result obtained by stool culture (79%) [48]. The colonization began on the second week of life, then the number of colonized infants increased regularly from the 4th to the 6th week of life reaching 50% of neonates colonized by *Clostridium* spp. The semi-quantitative approach showed that *Clostridium* spp. represented a relatively important bacterial population as soon as they appeared and that bacterial load appeared stable over the survey period (Figure 4B). Considering OTUs shared by 2 infants or more, transient or persistent colonization was observed for the major clostridial OTUs (*C. butyricum*, *C. difficile*, *C. neonatale* and *C. perfringens*) and *Clostridium tertium* depending on the infants while *Clostridium paraputrificum* and *Clostridium disporicum* group appeared as transient colonizers only.

C. difficile is a recognized pathogen since the toxigenic strains cause severe enterocolitis and antibiotic-associated diarrhoea. The species represent up to 50% of the bacterial species isolated from infants, particularly

from formula-fed infants [1]. In breast-fed infants *C. difficile* represented from 6% to 20% of the cultivated micro-organisms [1]. Healthy neonates may harbour *C. difficile* and its toxins without apparent pathologic consequences [42]. In our population, about 1/3 of very preterm neonates were colonized by *C. difficile*. “*Clostridium neonatale*” is a non-validated species described during a NICU outbreak where 20.8% of neonates carried the same “*C. neonatale*” strain [49]. We showed that out of an epidemic context, 1/3 of our patients were colonized by *C. neonatale*. The role of *C. neonatale* and its specificity for the neonate microbiota need to be explored. *Clostridium* spp., particularly *C. perfringens* [9], *C. difficile* [50] and *C. butyricum* [48,51] have been related to NEC. We showed that these OTUs frequently colonized the neonates included in this study. One patient developed a NEC, *C. butyricum* was detected twice, at the onset of the clinical signs and at day 31 after the onset of NEC (patient ZA).

Enterococcus spp

SLOTUs affiliated to the genus *Enterococcus* were among the most represented (10.8%) and were found in 18 out of the 30 infants (60%). However, diversity of enterococcal OTUs was rather low with 2 SLOTUs found during the study: *Enterococcus faecalis* which was the most represented and *Enterococcus durans* group (Table). Among the population, only 2 patients (6.7% of the infants) were successively or simultaneously colonized by these 2 SLOTUs. At the first week of life, 13% of the patients were colonized. The level of colonization increased regularly over time, about half of the patients being colonized at the 5th week of life and up to 77% at the 8th week (Figure 4A). The semi-quantitative evaluation showed that enterococci were the second dominating genus of the very premature gut microbiota after staphylococci up to the 3rd week of life. Then, enterococci became quantitatively the major population during the following 3 weeks of life.

Despite inter-individual variations [2], enterococci were found among the main groups encountered in the gut microbiota of preterm infants [4] and represented one of the main groups during initial colonization in healthy infants in other molecular-based studies [27]. As observed herein, culture-based studies previously showed early enterococcal colonization that increased over time with a dynamic roughly similar to enterobacteria colonization (Figure 4A) [52], even if the quantitative increase in enterobacteria was delayed relative to enterococci (Figure 4B). However, in our population, the level of colonization was slightly lower than previously described in culture-based studies. For example, enterococcal colonization was shown by Hufnagel et al. (2007) [52] in 23% of the patients admitted to a NICU. In another instance, at the end of the first week of life, enterococci were isolated from stools of a

large majority (87%) of the preterm infants [17]. Persistent colonization was the most frequent finding for *Enterococcus* OTUs found in this study, observed in 83% of the infants harbouring *E. faecalis* and in the two infants colonized by *E. durans* group.

Both prematurity and low birth weight were statistically associated with enterococcal colonization on the first day of life [17]. Influence of the diet was also reported with significantly higher enterococcal counts for formula-fed infants compared to breast milk-fed infants [53]. Although enterococci were responsible for life-threatening infections, enterococcal colonization on the first day of life was not associated with differences in the outcome of infants with respect to death and life-threatening diseases [52].

The genus Veillonella

The genus *Veillonella* was the only representative of the class *Negativicutes* detected in this study. Five percent of the TTGE bands were affiliated to the genus *Veillonella* (Figure 2). Eight out of the 30 patients (26.6%) were colonized with *Veillonella* at least once during the survey (5 infants by one OTU and 3 by 2 OTUs). About 5% of the neonates were colonized during the first week of life, this rate reaching about 20% from the 4th week of life. Semi-quantitatively, high representation of *Veillonella* was observed between the 5th and the 7th week of life (Figure 4B). Large inter-individual variation was noted since *Veillonella* spp.-corresponding TTGE bands accounted for less than 5% to more than 30% of the generated bands depending on the patient (Figure 3). We showed here that members of the genus *Veillonella* could be present in gut microbiota of very premature infants, sometimes with high representation (patients D, Y and ZB in Figure 3) and persistent after the first colonization (patients D, K, X, Y and ZB) (Additional file 1: Table S1).

Veillonella spp. is part of several normal human microbiota including the fecal microbiota of healthy adults [54] and is predominant in the upper digestive tract [55]. Variations in the count of *Veillonella* spp. were previously noted depending on diet, pathology or antimicrobial treatment [56,57]. *Veillonella* may play a role in gut microbiota development at an early age [58] since they were shown to appear in neonate faeces on the first days of life [2,59], with significantly higher count in bottle-fed than in breast-fed children [1].

In oral flora, *Veillonella* spp. are early colonizers [60] establishing a nutrition chain with other bacteria [61] and are statistically associated with periodontal health [62]. *Veillonella* obtain energy from lactic acid produced by the streptococci as an end product of carbohydrate fermentation [63]. By analogy, one can expect that such a metabolic interaction between *Veillonella* spp. and lactic acid producers, notably staphylococci and streptococci,

the main representatives of the major class *Bacilli* in this study, may occur in the digestive tract. The role and the impact of such a potential metabolic cooperation between early colonizers of the gut microbiota of premature infants are worth to be investigated.

Enterobacteriaceae

The family *Enterobacteriaceae* was represented by 4.5% of the TTGE bands observed in this study (Figure 2) and was demonstrated in 10 infants (33.3%) during the study period. Most colonized patients (n = 6, 60%) harbored a unique enterobacterial OTU while 3 OTUs were recovered during the follow-up of patient Y. The representation of this family was lower than observed in culture-based studies [17] as well as in previous molecular-based studies, 36% of the clones detected in the study of Magne *et al.*, [4] being affiliated to *Enterobacteriaceae*. In our patient population, enterobacteria were found in about 5 to 10% of the neonates during the 5 first weeks of life, then the rate of colonization increased to reach 45% of the neonates at the 8th week (Figure 4A). Semi-quantitatively, we observed a rapid increase in the population after the 30th day of life, enterobacteria being the dominating bacteria of the microbiota from the 7th week of life (Figure 4B). Four SLOTUs were retrieved, *Escherichia coli*, *Klebsiella pneumoniae*, *Klebsiella oxytoca* and *Enterobacter cloacae*. *E. coli* was the main species represented, accounting for more than half of the SLOTUs of the family *Enterobacteriaceae* and was found in 8 preterm neonates. *Klebsiella* spp. and *Enterobacter cloacae* were found in 6 and 1 patients, respectively, and always showed a complex TTGE profile composed of several bands probably corresponding to 16S rDNA intragenomic variability as previously described [29].

Most of the TTGE bands (86%) corresponding to *Enterobacteriaceae* were observed in samples obtained after the 25th day of life and it was only after the 30th day of life, when the population quantitatively increased, that we observed *Enterobacteriaceae* in several successive samples. This suggests a durable implantation of enterobacteria after the first month of life of very premature neonates contrary to the early implantation described in healthy infant [2,64] and in pre-term infant gut [3].

Minority populations

Fourteen minor GLOTUs, each representing less than 2.4% of the total GLOTUs (Figure 2), were detected in this study. Generally, less than 10% of the patients were colonized with such minor groups whatever the week of sampling (Additional file 1: Table S1) and semi-quantitative analysis showed that these groups were present at low load in the microbiota (data not shown). They included 23 SLOTUs, some of them being found in only one sample (*Sarcina ventriculi*, *Bacillus* sp. *Oceanobacillus* sp. etc.).

Others were able to colonize durably the neonate gut and were detected in several chronological samples in one or more patient. This was the case for *Bifidobacterium breve* (patient ZF), *Bifidobacterium longum* (patient U), *Rothia mucilaginosa* (patient S), *Streptococcus salivarius* (patients X and Y), and *Streptococcus thermophilus* (patient T), which were previously described in neonate gut microbiota.

The genus *Streptococcus* appeared as a major group in the study of Magne *et al.* [4] whereas in accordance with our results streptococci were seldom detected in other studies [16,17,29]. Moreover, streptococcal OTUs were most often transient colonizers of the neonatal gut except for *S. salivarius* in patients X and Y.

Bifidobacteria were detected in 4 patients (14 samples) and represented less than 1% of the TTGE bands analysed in this study. The rarity of bifidobacteria in our population of very preterm infants confirmed previous results [4]. Bifidobacteria were described as early and dominant colonizers of healthy full-term neonates specially breast-fed neonates [1,58,65], but their colonization is delayed in pre-term infants [3,16,17]. In a recent study, probiotics, in the form of *Bifidobacterium* and *Lactobacillus*, fed enterally to very low birth weight preterm infants for 6 weeks were shown to reduce the incidence of death and necrotizing enterocolitis [66]. The low prevalence of bifidobacteria in very preterm neonate gut could be an additional argument for their use as probiotics. However, the patient ZA who developed a NEC was one of the four patients colonized by bifidobacteria in this study. We did not detect lactobacilli in this study.

To our knowledge, *Burkholderiales* (including *Aquabacterium commune* and *Aquabacterium citraphilum*), *Sneathia sanguinegens* and *Rothia mucilaginosa* were described here for the first time as colonizers of the neonate gut. Of note, *A. commune* and *A. citraphilum* have been found in four samples from the patient ZA, who developed a NEC. Some patients displayed very atypical microbiota; for instance, the patient T showed a persistent gut colonization by *Streptococcus thermophilus* and an unidentified *Burkholderiales* beside staphylococci over a 15-day period. No clinical or epidemiological particularity was noted for this neonate. The patient G was colonized by staphylococci, *Sneathia sanguinegens* (*Fusobacteria*), and an unidentified taxon and died at day 9 of life due to a non-digestive cause (Figure 3).

Conclusions

Today, pyrosequencing and other high-throughput sequencing methods allow the in-depth description of microbiota. However, high throughput metagenomics is until today limited to a relative low number of samples [5,7,10,35], as exemplified in recent matagenomic studies of the neonate gut microbiota. Despite low resolution,

fingerprinting-based methods remain complementary of sequencing-based approaches because they allowed the follow-up of the dominant gut microbiota in larger cohorts of patients.

We describe here bacterial colonization dynamics in consecutive stool samples of 30 very premature infants. Gram-positive bacteria (staphylococci, enterococci and clostridia) represent the quantitatively dominant microbiota established in the neonate gut during the first month of life, staphylococci being the earliest colonizers found in a large majority of infants. Gram-negative bacteria (*Enterobacteriaceae* and *Veillonella*) established a delayed and inconstant colonization over the study period compared to Gram-positive bacteria.

Beside dominant microbiota, satellite taxa are numerous, generating a great interindividual variability in the composition and chronology of colonizing species, despite a monocentric recruitment, like in term neonates. According to the literature, this variability has to be related to multiple factors such as GA, mode of delivery, birth weight, per partum maternal antibiotherapy and early neonatal antibiotherapy. Thus, defining the normal gut-associated microbiota in preterm infants remains a challenge but is a prerequisite not only for future therapy aiming to intestinal microbiota modification but also for future research on intestinal diseases of the neonate.

Methods

Population and stool sample collection

We included 30 very preterm infants, born between 26 and 29 weeks of GA (median value = 27) with a median birth weight of 950 g (760 g - 1060 g) and hospitalized in the NICU of the Montpellier university hospital. Stool samples were prospectively collected once to twice a week in each patient between day 3 and day 56 of life or until the last day of stay in the neonatal unit. Four to 15 samples were obtained for each patient (mean value = 11.8). Other clinical characteristics recorded for the population were reported elsewhere [33]. Formal ethical approval was not required for this study but a written informed consent for participation in the study was obtained from the patient's parents.

DNA extraction from stool sample

Stool samples (50 mg, wet weight) were suspended in 1 mL of sterile DNA-free water and homogenized. The suspension was centrifuged at 10,000 g for 10 min at room temperature. The supernatants and the fat layers were removed. The pellets were suspended in 150 µl of Tris-EDTA buffer and DNA was extracted using the MasterPure Gram positive DNA purification kit (Epicentre) according to supplier's instructions but with lysozym incubation prolonged to 16 hours.

PCR-TTGE assays

The V2-V3 region of the 16S rRNA gene was amplified with the primers HDA1 (5'-ACTCCTACGGGAGGCAG CAGT-3') and HDA2 (5'-GTATTACCGCGGCTGCTG GCA-3') (Ogier, 2002) giving a PCR product of about 233 bp. A GC-clamp 5'-CGCCGGGGGCGC GCCCCGG GCGGGGCGGGGGCACGGGGGG-3' was added at the 5' side of the primer HDA1 for PCR-TTGE analysis. The PCR was performed with FastStart High fidelity PCR system (Roche). PCR and TTGE conditions were previously described [24].

TTGE analysis and band identification

The gel migration distance of TTGE bands was measured manually. Bands were assigned to OTUs either by comparison to a homemade « TTGE diversity» ladder which includes fingerprints of pure strains isolated from infant stools or by sequencing. The ladder was constructed as previously described [24]. Band comparisons were performed after gel standardization using three internal migration standard loaded with DNAs amplified from samples. Heteroduplex artifacts corresponding to chimeric amplification with each DNA strand coming from different bacteria in the community. Heteroduplex bands generally appeared as thin and/or faint bands at the top of the gel or nearly up to an intense band. Band sequencing confirmed their heterogeneous nature.

For sequencing, bands obtained from the TTGE gels were excised, washed three times in sterile distilled water, and incubated overnight in 50 µL of elution buffer (Qiagen). The supernatant was used in a PCR experiment performed as described above with the primers HDA1 without GC-clamp and HDA2. Amplified DNA was then sequenced on an ABI 32 sequencer (Beckman Coulter Cogenics). The sequences were compared to the NCBI, RDPII and Greengenes databases to determine OTUs (Additional file 2). Each sequence was affiliated to a SLOTU that corresponded to a phylotype, i.e., a terminal node in 16S rRNA-based phylogenetic analysis. In most cases, one SLOTU corresponded to one species, but it could correspond to a group of few species not separated in 16S rRNA gene phylogeny. Two phylotypes were affiliated to the same SLOTU when the sequence similarity was above 99%. SLOTU and PLOTU corresponded to groups of SLOTU defined on the basis of the current taxonomy (<http://www.ncbi.nlm.nih.gov/taxonomy>).

Diversity and dynamics data analysis

As bacteriological data were collected at least once a week but at various days of age in the recruited infants, we reported them as a function of age using a week-based scale. For each infant, the mean number of OTUs was computed for every week of age starting from

delivery. The maximal number of species observed over the stool samples was also computed for each infant.

Semi-quantitative scoring was performed by visual inspection for each OTU using a four-point scale: 0 - no bacteria, 1 - few bacteria (+/weak band intensity), 2 - rather numerous bacteria (+/moderate band intensity), 3 numerous bacteria (+++/bright band intensity) as previously described by Roudière et al. (2009) (24). For each neonate, a semi-quantitative score was calculated per week for each GLOTU corresponding to mean semi-quantitative scores of the OTUs affiliated to the GLOTU. Finally, a mean semi-quantitative score was assessed per week for each GLOTU in the colonized population. The maximal semi-quantitative score observed for each GLOTU in each infant per week was also computed and a mean maximal score was calculated for the colonized patients. Colonization by an OTU was defined as either transient or persistent over the study period based on the number of positive samples ($\leq 50\%$ and $> 50\%$, respectively) for the considered OTU after the initial OTU recovery.

Nucleotide sequences accession number

The partial sequences of 16S rRNA gene obtained in this study have been deposited in the GenBank database under accession numbers (*They will be provided upon acceptance of the article*).

Additional files

Additional file 1: Table S1. Qualitative and semi-quantitative characteristics of gut colonization in the 30 preterm infants included in the study.

Additional file 2: Nucleotide sequences of the TTGE bands (fasta format).

Competing interests

The authors declare that they have no competing interests.

Authors' contributions

FA and LR carried out the diversity study and performed data formatting and interpretation. JCP conceived of the study and coordinated clinical research. AJ participated in the design of the study and performed patients' recruitment. AF interpreted data and helped to draft the manuscript. DN performed the statistical analysis and helped to draft the manuscript. TPB performed the statistical analysis. HM participated in the design of the study, in data interpretation and helped to draft the manuscript. EJB conceived of the study, coordinated microbiological experiments and write the manuscript. All authors read and approved the final manuscript.

Acknowledgments

Thanks are extended to Valérie Macioce, medical writer at the University Hospital of Montpellier, for English editing of the manuscript.

Author details

¹Université Montpellier 1, UMR 5119 ECOSYME, Equipe Pathogènes et Environnements Unité de Bactériologie, U.F.R. des Sciences pharmaceutiques et biologiques, 15, Avenue Charles Flahault, BP 14491, Montpellier, Cedex 5 34093, France. ²Centre Hospitalier de Fréjus, Laboratoire de bactériologie, 240 avenue de Saint-Lambert BP 110 83608, Fréjus, France. ³Hospices Civil de

Lyon, Service de Néonatalogie, 103, Grande-Rue de la Croix-Rousse, Lyon, Cedex 04 69317, France. ⁴Centre Hospitalier Universitaire de Montpellier, Hôpital Arnaud de Villeneuve, Service de néo-natalogie, 371 Avenue du Doyen Gaston Giraud, Montpellier, Cedex 5 34295, France. ⁵Centre Hospitalier Régional Universitaire de Montpellier, Hôpital Lapeyronie, Département Urgences pédiatriques, 371, Avenue du Doyen Gaston Giraud, Montpellier, Cedex 5 34295, France. ⁶Centre Hospitalier Universitaire de Montpellier, Département d'Information Médicale, 371 Avenue du Doyen Gaston Giraud, Montpellier, Cedex 5 34295, France. ⁷Centre Hospitalier Universitaire de Montpellier, Hôpital Arnaud de Villeneuve, Laboratoire de Bactériologie, 371 Avenue du Doyen Gaston Giraud, Montpellier, Cedex 5 34295, France. ⁸Centre Hospitalier Universitaire de Montpellier, Laboratoire d'Hygiène hospitalière, 778, Rue de la Croix Verte, Montpellier 34000, France.

Received: 30 November 2014 Accepted: 11 December 2014

Published online: 31 December 2014

References

- Benno Y, Sawada K, Mitsuoka T: The intestinal microflora of infants: composition of fecal flora in breast-fed and bottle-fed infants. *Immunol* 1984, **28**:975–986.
- Favier CF, Vaughan EE, de Vos WM, Akkermans DL: Molecular monitoring of succession of bacterial communities in human neonates. *Appl Env Microbiol* 2002, **68**:219–226.
- Sakata H, Yoshioka H, Fujita K: Development of the intestinal flora in very low birth weight infants compared to normal full-term newborns. *Eur J Pediatr* 1985, **144**:186–190.
- Magne F, Abely M, Boyer F, Morville P, Pochart P, Suau A: Low species diversity and high interindividual variability in faeces of preterm infants as revealed by sequences of 16S rRNA genes and PCR-temporal temperature gradient gel electrophoresis profiles. *FEMS Microbiol Ecol* 2006, **57**:128–138.
- Chang JY, Shin SM, Chun J, Lee JH, Seo JK: Pyrosequencing-based molecular monitoring of the intestinal bacterial colonization in preterm infants. *J Pediatr Gastroenterol Nutr* 2011, **53**:512–519.
- Brook I: Microbiology and management of neonatal necrotizing enterocolitis. *Am J Perinatol* 2008, **25**:111–118.
- Mai V, Torrazza RM, Ukhanova M, Wang X, Sun Y, Li N, Shuster J, Sharma R, Hudak ML, Neu J: Distortions in development of intestinal microbiota associated with late onset sepsis in preterm infants. *PLoS One* 2013, **8**:e52876.
- Claud EC, Walker WA: Bacterial colonization, probiotics, and necrotizing enterocolitis. *J Clin Gastroenterol* 2008, **42**:S46–S52.
- de la Cochetiere MF, Piloquet H, des Robert C, Darmaun D, Galmiche JP, Roze JC: Early intestinal bacterial colonization and necrotizing enterocolitis in premature infants: the putative role of *Clostridium*. *Pediatr Res* 2004, **56**:366–370.
- Mai V, Young CM, Ukhanova M, Wang X, Sun Y, Casella G, Theriaque D, Li N, Sharma R, Hudak M, Neu J: Fecal microbiota in premature infants prior to necrotizing enterocolitis. *PLoS One* 2011, **6**:e20647.
- Deshpande G, Rao S, Patole S: Probiotics for prevention of necrotising enterocolitis in preterm neonates with very low birthweight: a systematic review of randomised controlled trials. *Lancet* 2007, **369**:1614–1620.
- Butel MJ, Roland N, Hibert A, Popot F, Favre A, Tessedre AC, Bensaada M, Rimbault A, Szylit O: Clostridial pathogenicity in experimental necrotising enterocolitis in gnotobiotic quails and protective role of bifidobacteria. *J Med Microbiol* 1998, **47**:391–399.
- Palmer C, Bik EM, DiGiulio DB, Relman DA, Brown PO: Development of the human infant intestinal microbiota. *PLoS Biol* 2007, **5**:e177.
- Gupta S, Morris JG Jr, Panigrahi P, Nataro JP, Glass RI, Gewolb IH: Endemic necrotizing enterocolitis: lack of association with a specific infectious agent. *Pediatr Infect Dis J* 1994, **13**:728–734.
- Stark PL, Lee A: The microbial ecology of the large bowel of breast-fed and formula-fed infants during the first year of life. *J Med Microbiol* 1982, **15**:189–203.
- Blakey JL, Lubitz L, Barnes GL, Bishop RF, Campbell NT, Gillam GL: Development of gut colonisation in pre-term neonates. *J Med Microbiol* 1982, **15**:519–529.
- Rotimi VO, Olowe SA, Ahmed I: The development of bacterial flora of premature neonates. *J Hyg (Lond)* 1985, **94**:309–318.

18. Hall SL, Hall RT, Barnes WG, Riddell SW, Meng L, Parisi JT, Kilbride HW, Maulik D: **Relationship of maternal to neonatal colonization with coagulase-negative staphylococci.** *Am J Perinatol* 1990, **7**:384–388.
19. Gewolb IH, Schwalbe RS, Taciak VL, Harrison TS, Panigrahi P: **Stool microflora in extremely low birthweight infants.** *Arch Dis Child Fetal Neonatal* 1999, **80**:F167–F173.
20. Hällström M, Eerola E, Vuento R, Janas M, Tammela O: **Effects of mode of delivery and necrotising enterocolitis on the intestinal microflora in preterm infants.** *Eur J Clin Microbiol Infect Dis* 2004, **23**:463–470.
21. Butel MJ, Suau A, Campeotto F, Magne F, Aires J, Ferraris L, Kalach N, Leroux B, Dupont C: **Conditions of bifidobacterial colonization in preterm infants: a prospective analysis.** *J Ped Gastroenterol* 2007, **44**:577–582.
22. Rougé C, Piloquet H, Butel MJ, Berger B, Rochat F, Ferraris L, Des Robert C, Legrand A, de la Cochetière MF, N'Guyen JM, Vodovar M, Voyer M, Darmaun D, Rozé JC: **Oral supplementation with probiotics in very-low-birth-weight preterm infants: a randomized, double-blind, placebo-controlled trial.** *Am J Clin Nutr* 2009, **89**:1828–1835.
23. Björkström MV, Hall L, Söderlund S, Håkansson EG, Håkansson S, Domellöf M: **Intestinal flora in very low-birth weight infants.** *Acta Paediatr* 2009, **98**:1762–1767.
24. Roudière L, Jacquot A, Marchandin H, Aujoulat F, Devine R, Zorngiotti I, Jean-Pierre H, Picaud JC, Jumas-Bilak E: **Optimized PCR-Temporal Temperature Gel Electrophoresis compared to cultivation to assess diversity of gut microbiota in neonates.** *J Microbiol Methods* 2009, **79**:156–165.
25. Campeotto F, Suau A, Kapel N, Magne F, Viallon V, Ferraris L, Waligora-Dupriet AJ, Soulaïnes P, Leroux B, Kalach N, Dupont C, Butel MJ: **A fermented formula in pre-term infants: clinical tolerance, gut microbiota, down-regulation of faecal calprotectin and up-regulation of faecal secretory IgA.** *Br J Nutr* 2011, **22**:1–10.
26. Zoetendal EG, Vaughan EE, de Vos WM: **A microbial world within us.** *Mol Microbiol* 2006, **59**:1639–1650.
27. Wang Y, Hoenig JD, Malin KJ, Qamar S, Petrof EO, Sun J, Antonopoulos DA, Chang EB, Claud EC: **16S rRNA gene-based analysis of fecal microbiota from preterm infants with and without necrotizing enterocolitis.** *ISME J* 2009, **3**:944–954.
28. Rougé C, Goldenberg O, Ferraris L, Berger B, Rochat F, Legrand A, Göbel UB, Vodovar M, Voyer M, Rozé JC, Darmaun D, Piloquet H, Butel MJ, de La Cochetière MF: **Investigation of the intestinal microbiota in preterm infants using different methods.** *Anaerobe* 2010, **16**:362–370.
29. Millar MR, Linton CJ, Cade A, Glancy D, Hall M, Jalal H: **Application of 16S RNA gene PCR to study bowel flora of preterm infants with and without necrotizing enterocolitis.** *J Clin Microbiol* 1996, **34**:2506–2510.
30. Schwiertz A, Gruhl B, Löbnitz M, Michel P, Radke M, Blaut M: **Development of the intestinal bacterial composition in hospitalized preterm infants in comparison with breast-fed, full-term infants.** *Pediatr Res* 2003, **54**:393–399.
31. Mshvildadze M, Neu J, Shuster J, Theriaque D, Li N, Mai V: **Intestinal microbial ecology in premature infants assessed with non-culture-based techniques.** *J Pediatr* 2010, **156**:20–25.
32. Ogier JC, Son O, Gruss A, Tailliez P, Delacroix-Buchet A: **Identification of the bacterial microflora in dairy products by temporal temperature gradient gel electrophoresis.** *Appl Environ Microbiol* 2002, **68**:3691–3701.
33. Jacquot A, Neveu D, Aujoulat F, Mercier G, Marchandin H, Jumas-Bilak E, Picaud JC: **Dynamics and clinical evolution of bacterial gut microflora in extremely premature patients.** *J Pediatr* 2011, **158**:390.
34. Morowitz MJ, Deneff VJ, Costello EK, Thomas BC, Poroyko V, Relman DA, Banfield JF: **Strain-resolved community genomic analysis of gut microbial colonization in a premature infant.** *Proc Natl Acad Sci U S A* 2011, **108**:1128–1133.
35. LaTuga MS, Ellis JC, Cotton CM, Goldberg RN, Wynn JL, Jackson RB, Seed PC: **Beyond bacteria: a study of the enteric microbial consortium in extremely low birth weight infants.** *PLoS One* 2011, **6**:e27858.
36. Sharon I, Morowitz MJ, Thomas BC, Costello EK, Relman DA, Banfield JF: **Time series community genomics analysis reveals rapid shifts in bacterial species, strains, and phage during infant gut colonization.** *Genome Res* 2013, **23**(1):111–120.
37. Human Microbiome Project Consortium: **Structure, function and diversity of the healthy human microbiome.** *Nature* 2012, **486**:207–214.
38. Ghebremedhin B, Layer F, König W, König B: **Genetic classification and distinguishing of *Staphylococcus* species based on different partial gap, 16S rRNA, hsp60, rpoB, sodA, and tuf gene sequences.** *J Clin Microbiol* 2008, **46**(3):1019–1025.
39. Schleifer KH, MeAyer SA, Rupprecht M: **Relatedness among coagulase-negative staphylococci deoxyribonucleic acid reassociation and comparative immunological studies.** *Arch Microbiol* 1979, **122**(1):93–101.
40. Eckburg PB, Bik EM, Bernstein CN, Purdom E, Dethlefsen L, Sargent M, Gill SR, Nelson KE, Relman DA: **Diversity of the Human Intestinal Microbial Flora.** *Science* 2005, **308**:1635–1638.
41. Kurokawa K, Itoh T, Kuwahara T, Oshima K, Toh H, Toyoda A, Takami H, Morita H, Sharma VK, Srivastava TP, Taylor TD, Noguchi H, Mori H, Ogura Y, Ehrlich DS, Itoh K, Takagi T, Sakaki Y, Hayashi T, Hattori M: **Comparative metagenomics revealed commonly enriched gene sets in human gut microbiomes.** *DNA Res* 2007, **14**:169–181.
42. Mackie RI, Sghir A, Gaskins HR: **Developmental microbial ecology of the neonatal gastrointestinal tract.** *Am J Clin Nutr* 1999, **69**:1035S–1045S.
43. Kafarskaia LI, Volodin NN, Efimov BA, Afanas'ev SS, Shkoporov AN: **Peculiarities of microbial colonization of the intestinal tract in newborns and pre-term infants in intensive care units** [Article in Russian. *Vestn Ross Akad Med Nauk* 2006, **1**:10–15.
44. Rønnestad A, Abrahamsen TG, Medbø S, Reigstad H, Lossius K, Kaarensen PI, Englund IE, Irgens LM, Markestad T: **Septicemia in the first week of life in a Norwegian national cohort of extremely premature infants.** *Pediatrics* 2005, **115**:e262–e268.
45. Foka A, Chini V, Petinaki E, Kolonitsiou F, Anastassiou ED, Dimitracopoulos G, Spiliopoulou I: **Clonality of slime-producing methicillin-resistant coagulase-negative staphylococci disseminated in the neonatal intensive care unit of a university hospital.** *Clin Microbiol Infect* 2006, **12**:1230–1233.
46. Soeorg H, Huik K, Parm U, Ilmoja ML, Metelskaja N, Metsvaht T, Lutsar I: **Genetic Relatedness of Coagulase-Negative Staphylococci from Gastrointestinal Tract and Blood of Preterm Neonates with Late-Onset Sepsis.** *Pediatr Infect Dis J* 2012, Oct 17. [Epub ahead of print]
47. Jimenez E, Delgado S, Maldonado A, Arroyo R, Albújar M, García N, Jarrod M, Fernández L, Gómez A, Rodríguez JM: ***Staphylococcus epidermidis*: a differential trait of the fecal microbiota of breast-fed infants.** *BMC Microbiol* 2008, **10**:138–143.
48. Ferraris L, Butel MJ, Campeotto F, Vodovar M, Rozé JC, Aires J: ***Clostridia* in premature neonates' gut: incidence, antibiotic susceptibility, and perinatal determinants influencing colonization.** *PLoS One* 2012, **7**:e30594.
49. Alfa MJ, Robson D, Davi M, Bernard K, Van Caesele P, Harding GK: **An outbreak of necrotizing enterocolitis associated with a novel clostridium species in a neonatal intensive care unit.** *Clin Infect Dis* 2002, **35**:S101–S105.
50. Han VK, Dayed H, Chance GW, Brabyn DG, Shaheed WA: **An outbreak of *Clostridium difficile* necrotizing enterocolitis: a case for oral vancomycin therapy?** *Pediatrics* 1983, **71**:935–941.
51. Gotheffors L, Blenkarn I: ***Clostridium butyricum* and necrotising enterocolitis.** *Lancet* 1978, **1**:52–53.
52. Hufnagel M, Liese C, Loescher C, Kunze M, Proempeler H, Berner R, Krueger M: **Enterococcal colonization of infants in a neonatal intensive care unit: associated predictors, risk factors and seasonal patterns.** *BMC Infect Dis* 2007, **7**:107–128.
53. Rubaltelli FF, Biadaioli R, Pecile P, Nicoletti P: **Intestinal flora in breast- and bottle-fed infants.** *J Perinat Med* 1998, **26**:186–191.
54. Quintanilha AG, Zilberstein B, Santos MA, Pajeccki D, Moura EG, Alves PR, Maluf-Filho F, Cecconello I: **A novel sampling method for the investigation of gut microbiota.** *World J Gastroenterol* 2007, **13**:3990–3995.
55. Zilberstein B, Quintanilha AG, Santos MA, Pajeccki D, Moura EG, Alves PR, Maluf Filho F, de Souza JA, Gama-Rodrigues J: **Digestive tract microbiota in healthy volunteers.** *Clinics* 2007, **62**:47–54.
56. Albert MJ, Bhat P, Rajan D, Maiya PP, Pereira SM, Baker SJ: **Faecal flora of South Indian infants and young children in health and with acute gastroenteritis.** *J Med Microbiol* 1978, **11**:137–143.
57. Malinen E, Rinttilä T, Kajander K, Mättö J, Kassinen A, Krogius L, Saarela M, Korpela R, Palva A: **Analysis of the fecal microbiota of irritable bowel syndrome patients and healthy controls with real-time PCR.** *Am J Gastroenterol* 2005, **100**:373–382.
58. Harmsen HJ, Wildeboer-Veloo AC, Raangs GC, Wagendorp AA, Klijn N, Bindels JG, Welling GW: **Analysis of intestinal flora development in breast-fed and formula-fed infants by using molecular identification and detection methods.** *J Pediatr Gastroenterol Nutr* 2000, **30**:61–67.
59. Rotimi VO, Duerden BI: **The development of the bacterial flora in normal neonates.** *J Med Microbiol* 1981, **14**:51–62.

60. Könönen E, Kanervo A, Takala A, Asikainen S, Jousimies-Somer H: **Establishment of oral anaerobes during the first year of life.** *J Dent Res* 1999, **78**:1634–1639.
61. Eglund PG, Palmer RJ Jr, Kolenbrander PE: **Interspecies communication in *Streptococcus gordonii*-*Veillonella atypica* biofilms: signaling in flow conditions requires juxtaposition.** *Proc Natl Acad Sci U S A* 2004, **101**:16917–16922.
62. Kumar PS, Leys EJ, Bryk JM, Martinez FJ, Moeschberger ML, Griffen AL: **Changes in periodontal health status are associated with bacterial community shifts as assessed by quantitative 16S cloning and sequencing.** *J Clin Microbiol* 2006, **44**:3665–3673.
63. Diaz PI, Chalmers NI, Rickard AH, Kong C, Milburn CL, Palmer RJ Jr, Kolenbrander PE: **Molecular characterization of subject-specific oral microflora during initial colonization of enamel.** *Appl Environ Microbiol* 2006, **72**:2837–2848.
64. Park HK, Shim SS, Kim SY, Park JH, Park SE, Kim HJ, Kang BC, Kim CM: **Molecular analysis of colonized bacteria in a human newborn infant gut.** *J Microbiol* 2005, **43**:345–353.
65. Turrioni F, Peano C, Pass DA, Foroni E, Severgnini M, Claesson MJ, Kerr C, Hourihane J, Murray D, Fuligni F, Gueimonde M, Margolles A, De Bellis G, O'Toole PW, van Sinderen D, Marchesi JR, Ventura M: **Diversity of bifidobacteria within the infant gut microbiota.** *PLoS One* 2012, **7**:e36957.
66. Lin HC, Hsu CH, Chen HL, Chung MY, Hsu JF, Lien RI, Tsao LY, Chen CH, Su BH: **Oral probiotics prevent necrotizing enterocolitis in very low birth weight preterm infants: a multicenter, randomized, controlled trial.** *Pediatrics* 2008, **122**:693–700.

Submit your next manuscript to BioMed Central and take full advantage of:

- Convenient online submission
- Thorough peer review
- No space constraints or color figure charges
- Immediate publication on acceptance
- Inclusion in PubMed, CAS, Scopus and Google Scholar
- Research which is freely available for redistribution

Submit your manuscript at
www.biomedcentral.com/submit

