

## RESEARCH ARTICLE

# Association of Crohn's disease with *Foxp3* gene polymorphisms and its colonic expression in Chinese patients

Shenglong Xia<sup>1</sup> | Dagan Zhang<sup>1</sup> | Shuzi Zheng<sup>2</sup> | Chaoqun Wu<sup>1</sup> | Qianru Lin<sup>1</sup> |  
Shijie Ying<sup>1</sup> | Xiaoxiao Shao<sup>1</sup> | Yi Jiang<sup>1</sup>

<sup>1</sup>Department of Gastroenterology, The Second Affiliated Hospital and Yuying Children's Hospital of Wenzhou Medical University, Wenzhou, China

<sup>2</sup>Department of Pediatric Gastroenterology, The Second Affiliated Hospital and Yuying Children's Hospital of Wenzhou Medical University, Wenzhou, China

## Correspondence

Yi Jiang, Department of Gastroenterology, The Second Affiliated Hospital and Yuying Children's Hospital of Wenzhou Medical University, Wenzhou, Zhejiang Province, China.

Email: wzjiangyi@yeah.net

## Funding information

This study was funded by grants of Natural Science Foundation of Zhejiang Province (Grant number: LY14H030012, LY15H030018, LY17H030011, LY18H030009), Wenzhou Municipal Science and Technology Bureau (Grant number: Y20160102 and Y20170314).

**Background:** Fork head/winged helix transcription factor (*Foxp3*) plays a pivotal role in regulatory T (Treg) cells. The present study aimed to assess the association of Crohn's disease (CD) with *Foxp3* polymorphisms and its colonic expression in Chinese patients.

**Methods:** The *Foxp3* polymorphisms, rs3761547, rs2232365, rs2294021, and rs3761548, were examined by *SNaPshot* in 268 CD patients and 490 controls. The colonic expression levels of *Foxp3*, IL-2, and IL-4 were detected in 31 CD patients and 31 controls using real-time quantitative polymerase chain reaction, immunohistochemistry, and enzyme-linked immunosorbent assay.

**Results:** Compared to male controls, the proportion of variant allele of rs3761547 was increased in male patients. The variant alleles of rs3761547, rs2232365, and rs2294021 were less in male patients with stricturing CD compared to those with non-stricturing, non-penetrating CD; however, these variants were frequently detected in male patients with colonic CD than in those with ileocolonic CD. The variant allele of rs3761548 was increased in male patients with penetrating CD compared to those with non-stricturing, non-penetrating CD. The colonic expression of *Foxp3* was higher in CD patients than in controls (both males and females). Compared to male patients carrying wild-type alleles, the colonic expression of *Foxp3* was down-regulated in male patients with variant alleles, rs3761547, rs2232365, rs2294021, and rs3761548, respectively. However, the *Foxp3* polymorphisms were not significantly related with the colonic expression levels of IL-2 and IL-4 in CD patients (both males and females).

**Conclusion:** *Foxp3* polymorphisms might increase the CD susceptibility by reducing the colonic expression of *Foxp3* in male patients.

## KEYWORDS

Crohn's disease, expression, fork head/winged helix transcription factor, gene polymorphism

Author Shenglong Xia and author Dagan Zhang contributed equally to this work.

This is an open access article under the terms of the Creative Commons Attribution License, which permits use, distribution and reproduction in any medium, provided the original work is properly cited.

© 2019 The Authors. *Journal of Clinical Laboratory Analysis* Published by Wiley Periodicals, Inc.

## 1 | INTRODUCTION

Crohn's disease (CD) is one of the leading clinical phenotypes of inflammatory bowel diseases (IBD). Although the exact etiology is not yet clearly understood, the genetic predisposition and immunological imbalance have been implicated as the cause of the disease.<sup>1</sup> Regulatory T (Treg) cells and Th17 cells have been described as two distinct subsets of Th1 and Th2 cells due to their opposite effects on autoimmunity. Chao et al<sup>2</sup> found that Th1 and Th17 subsets were significantly increased in blood circulation, while Treg cells were decreased in Chinese patients with CD as compared to healthy controls. Notably, recent studies have emphasized that the imbalance between Treg cells and Th17 cells is a key process in the intestinal inflammation and the onset of IBD.<sup>3,4</sup>

Fork head/winged helix transcription factor 3 (Foxp3) is primarily expressed in Treg cells and has been demonstrated to program the differentiation and function of these cells. Previous studies have suggested that Foxp3 might switch on a complex transcriptional network responsible for the stabilization of Treg cells' phenotype. Some studies reported that Treg cells in peripheral blood in patients with active IBD were functionally normal but numerically deficient, and the transcriptional levels of Foxp3 increased in active IBD lesions as compared to those in non-inflammatory areas.<sup>5</sup> Moreover, several observations on murine colitis models deficient in Foxp3 indicated enhanced vulnerability to inflammation. Conversely, the induction of IBD in mouse models could be blocked by transduction with Foxp3 into CD4<sup>+</sup> CD25<sup>-</sup> Treg cells.<sup>6</sup> Furthermore, the suppressive function of Treg cells was found to be dependent on the high and stable expression of transcription factor Foxp3 along with the interaction of Foxp3 with other anti-inflammatory transcription factors, such as IL-2 and IL-4. Moreover, Foxp3 cooperates in a DNA-binding complex with the nuclear factor of activated T cells that modulate the T-cell activation and anergy to control the transcription of several key cytokine genes, including IL-2.<sup>7</sup>

The human Foxp3 is mapped to chromosome Xp11.23, and it encodes the corresponding transcription factor possessing a fork head/winged helix domain, a C2H2 zinc finger domain, and a leucine zipper-like domain. Several single nucleotide polymorphisms (SNPs) in Foxp3 affect the expression level of the molecule, thereby resulting in a lack of functional CD4<sup>+</sup>CD25<sup>+</sup> Treg cells. This deficiency eventually contributes to an increased risk of autoimmune diseases, such as systemic lupus erythematosus, autoimmune thyroid diseases (AITD), and allergic rhinitis (AR).<sup>8-10</sup> Currently, the data from the human genome database indicated that the four SNPs, rs3761547, rs2232365, rs2294021, and rs3761548, are highly frequent in Chinese Han population. Song et al<sup>11</sup> investigated a cohort of Chinese female population and demonstrated that the major alleles, rs2232365 (T), rs3761547 (A), and rs3761549 (C), contributed to an increased risk of psoriasis vulgaris. Moreover, the mutant homozygotes (AA) of rs3761548 and (CC) of rs2232365 were reported to engender an increasing risk of vitiligo in a Chinese population.<sup>12</sup> Another study in Chinese population detected Foxp3 rs2232365, which represented a novel susceptibility locus for

unexplained recurrent spontaneous abortion.<sup>13</sup> The present study aimed to ascertain whether the Foxp3 polymorphisms rs3761547, rs2232365, rs2294021, and rs3761548 were associated with the predisposition of CD in a Chinese population. In addition, the expression levels of Foxp3, IL-2, and IL-4 in colonic tissues were assessed to elucidate the function of Foxp3 polymorphisms in this cohort of patients with CD.

## 2 | MATERIALS AND METHODS

### 2.1 | Study subjects

From January 2008 to December 2015, a total of 268 patients with CD were recruited from the Second Affiliated Hospital of Wenzhou Medical University, Zhejiang Province in southeast China. The diagnosis of CD was established based on clinical, endoscopic, radiological, and histopathological findings according to the Lennard-Jones criteria.<sup>14</sup> The locations and behaviors of CD were evaluated by the Montreal classification criteria.<sup>15</sup> Consecutively, a total of 490 age- and sex-matched healthy individuals were assimilated at the Health Examination Center of the Second Affiliated Hospital of Wenzhou Medical University. For all subjects, the exclusion criteria were (a) positive hepatitis markers; (b) diabetes, rheumatoid arthritis, multiple sclerosis, or other autoimmune diseases; (c) acute coronary syndrome or another cardiovascular disease history; (d) various tumors; (e) and IBD family history. The demographic data of CD patients and controls are presented in Table 1.

A subset of participants (31 patients with CD and 31 controls) from each of the two groups (patients with CD and controls) was selected for detecting the expression levels of Foxp3, IL-2, and IL-4 in colonic tissue. However, before these measurements, the two subgroups were verified for any significant differences in terms of age or sex. The specimens of inflamed and normal mucosa in the colon were uniformly collected from patients with CD and controls, respectively, during the colonoscopy examination.

The present study was approved by the Local Ethics Committee of Wenzhou Medical University, China, and informed consent was obtained from each patient.

### 2.2 | Genomic DNA extraction and genotyping

Genomic DNA was extracted from peripheral blood using the DNeasy Blood & Tissue kit (Qiagen GmbH, Hilden, Germany) and stored at 4°C.

Genotypes of Foxp3 were determined by multiple SNaPshot assays (Applied Biosystems, Foster, CA, USA). Details on the primers used for multiple polymerase chain reaction (PCR) and single-base extension are listed in Table S1. The multiplex PCR amplification was performed from 10 ng of genomic DNA in a final volume of 10 µL containing 1 µL 10× PCR buffer with MgCl<sub>2</sub> (15 mmol/L; Roche, Basel, Switzerland), 20 mmol dNTP (Promega, Madison, WI, USA), 0.5 U FastStart Taq DNA polymerase (Roche), and a final concentration of each amplification primer of 0.1 µmol/L. The thermal

**TABLE 1** Demographic characteristics of patients with Crohn's disease (CD) and the controls

Characteristics	CD	Controls	P
Total number	268	490	
Sex (male/female)	137/131	222/268	0.125
Age (means $\pm$ SD) (years)	40.61 $\pm$ 14.01	41.19 $\pm$ 15.75	0.567
Smoking (n [%])			
Current or ex-smoker	35 (13.06)	74 (15.10)	0.444
Never smoked	233 (86.94)	416 (84.90)	
Body mass index (BMI)	18.18 $\pm$ 4.19	21.33 $\pm$ 5.21	
Lesion location <sup>a</sup> (n [%])			
Ileal (L1)	94 (35.07)		
Colonic (L2)	64 (23.88)		
Ileocolonic (L3)	110 (41.05)		
Behavior <sup>a</sup> (n [%])			
Non-stricturing, non-penetrating (B1)	155 (57.84)		
Stricturing(B2)	91 (33.95)		
Penetrating(B3)	22 (8.21)		
Treatment (n [%])			
Sulfasalazine/5-aminosalicylic acid	212 (79.10)		
Prednisone	143 (53.36)		
Antibiotics	186 (69.40)		
Immunosuppressant	83 (30.97)		
Infliximab	50 (18.66)		
Colectomy	35 (13.06)		

<sup>a</sup>The locations (B1, inflammatory-disease without evidence of stricture or penetrating disease; B2, stricturing-constant luminal narrowing with prestenotic dilation and/or obstructive symptoms but without penetrating disease; and B3, penetrating-bowel perforation, intra-abdominal fistula, inflammatory mass or abscess not related to a postoperative complication) and behaviors (L1, terminal ileum [TI] without colonic involvement; L2, colonic involvement without TI involvement; L3, ileocolonic disease involving both the TI and colon; and L4, disease proximal to the TI without TI or colonic involvement [coexisting with L1-L3 disease]) of CD were evaluated by the Montreal classification system. SD, standard deviation.

cycler conditions were 95°C for 5 minutes, followed by 35 cycles at 94°C for 30 seconds, 65°C for 30 seconds, and 72°C for 1 minute, with a final incubation at 72°C for 10 minutes. Subsequently, the PCR products were examined by electrophoresis in a 2.5% agarose gel. Then, we purified the PCR products with a mix of 1.5 U shrimp alkaline phosphatase (SAP; New England Biolabs, Beverly, MA, USA) and 2 U exonuclease I (TAKARA, Dalian, China) at 37°C for 80 minutes and enzyme inactivation at 85°C for 15 minutes. The *SNaPshot* multiplex sequencing reactions were performed in a final volume of 7  $\mu$ L containing 2  $\mu$ L purified multiple PCR products, 1  $\mu$ L *SNaPshot* Multiplex Mix, 1  $\mu$ L 5 $\times$  sequencing buffer, and 3  $\mu$ L *SNaPshot* sequencing primers. The cycle conditions were as follows: initial denaturation at 96°C for 1 minute, followed by 25 cycles at 96°C for 10 seconds, 52°C for 5 seconds, and 60°C for 30 seconds. The depuration of the product was carried out by adding 1 U SAP, followed by incubations at 37°C for 60 minutes and 75°C for 15 minutes. Then, 1.5  $\mu$ L *SNaPshot* products was mixed with 8  $\mu$ L HiDi™ formamide and 0.5  $\mu$ L GeneScan-120LIZ size standard (Applied Biosystems). Sequencing and data analyses were

carried out on an ABI 3730 Genetic Analyser with GeneMapper 4.0 software (Applied Biosystems), respectively.

### 2.3 | Real-time quantitative PCR (qPCR) analysis for mRNA expression of FOXP3

Total RNA was isolated from intestinal biopsies using the TRIzol™ Reagent (Thermo Fisher Scientific, MA, USA). The cDNA was prepared using the cDNA reverse transcription kit (Thermo Fisher Scientific, Waltham, MA, USA). The primers were synthesized by the Sangon Biotech (Shanghai, China): 5' AAGAGCTACGAGCTGCCT GAC 3' (forward); 5' GTAGTTTCGTGGATGCCACAG 3' (reverse) for  $\beta$ -actin; 5' GAAACAGCACATTCCAGAGTTC 3' (forward); 5' ATGGCCCAGCGGATGAG 3' (reverse) for Foxp3. qPCR was performed in triplicate, using a Power SYBR Green PCR Master Mix (Applied Biosystems). PCR conditions for gene amplification began with 95°C for 10 minutes, followed by 40 cycles of 95°C for 15 seconds, and 60°C for 1 minute. Amplification was performed in a total volume of 25  $\mu$ L. The expression of FOXP3 mRNA was

normalized to the expression of  $\beta$ -actin. Relative gene expression was calculated using the  $\Delta$ Ct method.

## 2.4 | Immunohistochemical analysis for the protein expression of FOXP3

Biopsy specimens were fixed in formalin and embedded in paraffin. These embedded specimens were cut into 2-mm sections and boiled in Tris-EDTA buffer (pH 9.0) in a cooker-cooler for 25 minutes. After blocking in endogenous peroxidase with 3% hydrogen peroxide solution at room temperature for 25 minutes, the slides were washed in phosphate-buffered saline (pH 7.4) three times for 5 minutes. The sections were incubated with 3% bovine serum albumin (Solarbio, Beijing, China) for 30 minutes to block unspecific antibody binding. Then, the sections were incubated with mouse anti-human Foxp3 antibody (Clone 236A/E; Abcam, Cambridge, UK; dilution 1:100) for 24 hours at 4°C and with a secondary antibody (Invitrogen, San Diego, CA, USA) for 30 minutes in a 37°C water bath. Detection was performed following treatment with immunoperoxidase using the EnVision system (Dako, Glostrup, Denmark). The expression of Foxp3 was quantitatively evaluated using the Image-Pro Plus 6.0 analysis system (Media Cybernetics, Rockville, MD, USA) by calculating the mean density, which was the integrated optical density (IOD) divided by the area of interest. Three fields of each slide at 200 $\times$  magnification were randomly selected, and the mean density was obtained for further statistical analysis.

## 2.5 | ELISA assay

To estimate the levels of IL-2 and IL-4 in the colonic tissue, the biopsy samples were homogenized mechanically in the buffer containing 1 mol/L Tris-HCl, 3 mol/L NaCl, and 10% Triton supplemented with protease inhibitor cocktail (Sigma-Aldrich). Then, the samples were then centrifuged at 18 300 g and 4°C for 30 minutes. The levels of

IL-2 and IL-4 were examined by ELISA kits according to the manufacturer's instructions (Abcam).

## 2.6 | Statistical analysis

Continuous variables are presented as mean  $\pm$  SD, and categorical variables are described as percentages. The Hardy-Weinberg equilibrium for the four SNPs in Foxp3 was evaluated by chi-square test. Since Foxp3 is positioned on the X chromosome, both patients with CD and the controls were divided into male and female subgroups. Unconditional logistical regression analysis (backward elimination) was used to investigate the associations of Foxp3 polymorphisms with the predisposition to CD. The covariants were as follows: age, body mass index (BMI), smoking, drug treatment (sulfasalazine/5-aminosalicylic acid, prednisone, antibiotics, immunosuppressant, infliximab), and colectomy. Analysis of linkage disequilibrium (LD) and haplotypes across Foxp3 polymorphisms was performed using Haploview 4.2 software (Cambridge, MA, USA). Post hoc power of the study was estimated using G\*Power software (G\*Power:Dusseldorf, North Rhine-Westphalia, Germany) (version 3.1). The comparison of the expression levels of Foxp3, IL-2, and IL-4 in the colonic tissue was performed using the Student t test. Bonferroni correction was applied for multiple comparisons to adjust the statistical threshold ( $P < 0.05/4 = 0.0125$ ).  $P$  value  $< 0.05$  was considered significant. Data were analyzed by SPSS 21.0 software for Windows (Chicago, IL, USA).

## 3 | RESULTS

### 3.1 | Comparison of Foxp3 polymorphisms between patients with CD and controls

Genotype distributions of Foxp3 rs3761547, rs2232365, rs2294021, and rs3761548 conformed to the Hardy-Weinberg equilibrium in controls (all  $P > 0.05$ ). The frequency of variant allele

**TABLE 2** Allelic distributions of Foxp3 gene between patients with Crohn's disease (CD) and controls in males

Foxp3	Controls (n = 222)	CD (n = 137)	P	OR (95% CI)	$P_{\text{adjust}}$	$OR_{\text{adjust}}$
rs3761547						
Allele A	178 (80.18)	97 (70.80)	0.041	1.688 (1.017-2.735)	0.013	2.241 (1.367-3.675)
Allele G	44 (19.82)	40 (29.20)				
rs2232365						
Allele T	148 (66.67)	78 (56.93)	0.064	1.513 (0.976-2.345)	0.313	1.122 (0.724-1.739)
Allele C	74 (33.33)	59 (43.07)				
rs2294021						
Allele A	148 (66.67)	78 (56.93)	0.064	1.513 (0.976-2.345)	0.189	1.382 (0.891-2.142)
Allele G	74 (33.33)	59 (43.07)				
rs3761548						
Allele C	191 (86.04)	117 (85.40)	0.867	1.053 (0.574-1.933)	0.682	1.021 (0.556-1.874)
Allele A	31 (13.96)	20 (14.60)				

CI, confidence interval; OR, odds ratio.

<sup>adjust</sup>The covariants were as follows: age, body mass index (BMI), smoking, drug treatment (sulfasalazine/5-aminosalicylic acid, prednisone, antibiotics, immunosuppressant, infliximab), and colectomy.

(G) of rs3761547 was higher in male CD patients than in male controls (29.20% vs 19.82%, odds ratio [OR] = 1.688, 95% confidence interval [CI] = 1.017-2.735,  $P = 0.041$ ). After adjusting for age, BMI, smoking, and treatment, the result described above reached a statistical significance ( $P = 0.013$ ) (Table 2). Nevertheless, no significant association of each *Foxp3* polymorphisms with CD susceptibility was observed in females after the adjustment of these clinical characteristics in patients with CD (all  $P > 0.05$ ; Table S2).

As described in Table 3, after Bonferroni correction ( $P < 0.05/4 = 0.0125$ ), the variant alleles (G), (C), (G) of rs3761547, rs2232365, and rs2294021 were shown to be less frequent in male patients with B2-type CD than in those with B1-type CD (all  $P < 0.01$ ). Conversely, in male patients with B1-type CD, the variant allele (A) of rs3761548 was prevalent in male patients with B3-type CD ( $P = 0.001$ ). The variant alleles (G), (C), and (G) of rs3761547, rs2232365, and rs2294021 were more common in male patients with L2-type than in those with L3-type (all  $P < 0.001$ ). However, no significant differences were observed in the comparisons of *Foxp3* polymorphisms among the subgroups of female patients (all  $P > 0.0125$ ; Table S3).

As illustrated in Figure 1, the male and female study subjects showed a strong LD between the SNPs rs3761547, rs2232365, rs2294021, and rs3761548 in *Foxp3*. Furthermore, we analyzed the associations between the haplotypes with CD susceptibility and the clinicopathological characteristics of CD patients. The frequencies of haplotypes due to the four SNPs are summarized in Table 4. Among the seven haplotypes, only (ATAC), (GCGC), and (ACGA) were evaluated, since their frequencies were more than 3% in both CD patients and the controls. When compared

to the corresponding controls, the haplotype (GCGC) was more prevalent in male CD patients ( $P = 0.032$ ), whereas the haplotype (ACGA) was less frequent in female CD patients ( $P = 0.046$ ). The proportion of haplotype (ATAC) was significantly higher in male patients with B2-type than in male patients with B1-type ( $P = 0.003$ ). However, a converse conclusion was drawn for the haplotype (GCGC) when the above two subgroups were compared ( $P = 0.009$ ). The haplotype (ACGA) was more prevalent in male patients with B3-type than in males with B1-type ( $P < 0.001$ ). In contrast to male patients with L3-type, the haplotype (ATAC) was remarkably reduced in the male L2-type subgroup ( $P < 0.001$ ), while the haplotype (GCGC) was apparently increased in the male L2-type subgroup ( $P < 0.001$ ).

### 3.2 | Correlation between *Foxp3* polymorphisms and the colonic expression levels in patients with CD

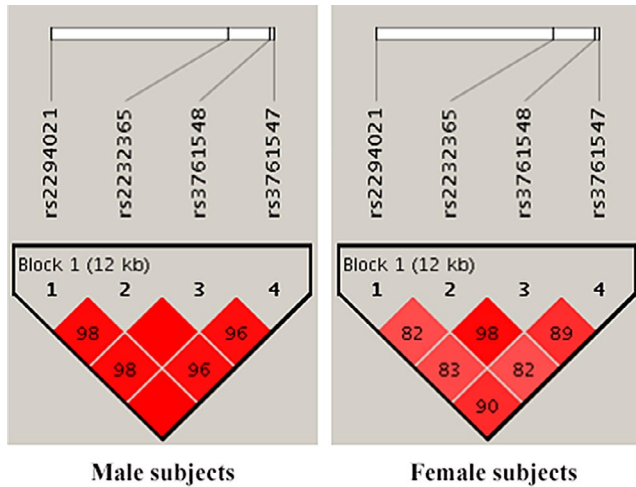
The average expression of *Foxp3* mRNA and protein was upregulated in patients with CD as compared to controls (in males or females; Figure 2). Moreover, the average expression of *Foxp3* mRNA and protein in male patients with CD carrying the variant allele (G), (C), (G), and (A) was downregulated as compared to that in male patients with the wild-type allele (A), (T), (A), and (C) of rs3761547, rs2232365, rs2294021, and rs3761548, respectively. However, no significant difference was detected between the variant genotypes and wild-type homozygotes of the four SNPs in female patients with CD (all  $P > 0.05$ ; Figure 3).

**TABLE 3** Association of *Foxp3* gene polymorphisms with clinical characteristics of male patients with Crohn's disease (CD)

<i>Foxp3</i>	Behavior			Lesion location		
	B1 (n = 74) (%)	B2 (n = 56) (%)	B3 (n = 7) (%)	L1 (n = 45) (%)	L2 (n = 27) (%)	L3 (n = 65) (%)
rs3761547						
Allele A	45 (60.81)	46 (82.14)	6 (85.71)	25 (55.56)	14 (51.85)	58 (89.23)
Allele G	29 (39.19)	10 (17.86) <sup>a</sup>	1 (14.29)	20 (44.44)	13 (48.15)	7 (10.77) <sup>e</sup>
rs2232365						
Allele T	36 (48.65)	41 (73.21)	1 (14.29)	21 (46.67)	8 (29.63)	49 (75.38)
Allele C	38 (51.35)	15 (26.79) <sup>b</sup>	6 (85.71)	24 (53.33)	19 (70.37)	16 (24.62) <sup>f</sup>
rs2294021						
Allele A	36 (48.65)	41 (73.21)	1 (14.29)	21 (46.67)	8 (29.63)	49 (75.38)
Allele G	38 (51.35)	15 (26.79) <sup>c</sup>	6 (85.71)	24 (53.33)	19 (70.37)	16 (24.62) <sup>g</sup>
rs3761548						
Allele C	64 (86.49)	51 (91.07)	2 (28.57)	41 (91.11)	21 (77.78)	55 (84.62)
Allele A	10 (13.51)	5 (8.93)	5 (71.43) <sup>d</sup>	4 (8.89)	6 (22.22)	10 (15.38)

CI, confidence interval; OR, odds ratio. Bonferroni correction was used, and the threshold was calculated as  $0.05/4 = 0.0125$ . Non-Structuring, non-penetrating CD vs structuring CD.

<sup>a</sup>OR = 0.337, 95% CI: 0.147-0.772,  $P = 0.009$ , <sup>b</sup>OR = 0.347; 95% CI: 0.164-0.731,  $P = 0.005$ , <sup>c</sup>OR = 0.347, 95% CI: 0.164-0.731,  $P = 0.005$ . Non-Structuring, non-penetrating CD vs penetrating CD, <sup>d</sup>OR = 16.000, 95% CI: 2.725-93.941,  $P = 0.001$ . Colonic CD vs Ileocolonic CD, <sup>e</sup>OR = 0.130, 95% CI: 0.044-0.386,  $P < 0.001$ , <sup>f</sup>OR = 0.137, 95% CI: 0.051-0.374,  $P < 0.001$ , <sup>g</sup>OR = 0.137, 95% CI: 0.051-0.374,  $P < 0.001$ .



**FIGURE 1** LD patterns between *Foxp3* (rs3761547, rs2232365, rs2294021, rs3761548) polymorphisms by Haploview 4.2 software. Number inside each square represents for  $D'$  value between two SNPs and the dark area which have no digital represent  $D' = 1$ . Dark color of a square indicates strong connection between the two SNPs. Block 1 illustrated a strong LD among the four SNPs of *Foxp3*

### 3.3 | Association between *Foxp3* polymorphisms and the expression levels of IL-2 and IL-4 in patients with CD

Previous studies reported that *Foxp3* might be responsible for the modulation of several key cytokines in T-cell activation and anergy, such as IL-2 and IL-4.<sup>7</sup> Therefore, we further detected the colonic expression levels of the two cytokines by ELISA. The colonic expressions of IL-2 and IL-4 in patients with CD were lower than that in controls (both males and females). Nevertheless, no distinct correlation was established between the four SNPs and the expression levels of IL-2 and IL-4 in this cohort of patients with CD (in males and females; all  $P > 0.05$ ; Figure 4).

## 4 | DISCUSSION

Evidence from *Foxp3*-mutant scurfy mice and *Foxp3*-null mice has indicated that both were likely to suffer from autoimmune and inflammatory syndromes, mainly due to the deficiency of CD4<sup>+</sup>CD25<sup>+</sup> Treg cells.<sup>16,17</sup> Conversely, the retroviral gene transfer of *Foxp3* into neonatal *Foxp3*-deficient mice successfully induced the differentiation of naive T cells into a Treg cell phenotype.<sup>16-18</sup> Moreover, the dysfunction of *Foxp3* might not only give rise to the lack of Treg cells but also promote the activity of CD4<sup>+</sup> CD25<sup>-</sup> T cells, which expressed the increased levels of several inflammatory markers and cytokines, leading to autoimmune diseases. Several SNPs of *Foxp3* that occur at high frequencies in the general population have been widely investigated in common multifactorial human diseases, such as AITD, immunodysregulation, polyendocrinopathy, enteropathy, X-linked (IPEX) syndrome, and type 1 diabetes.<sup>19,20</sup>

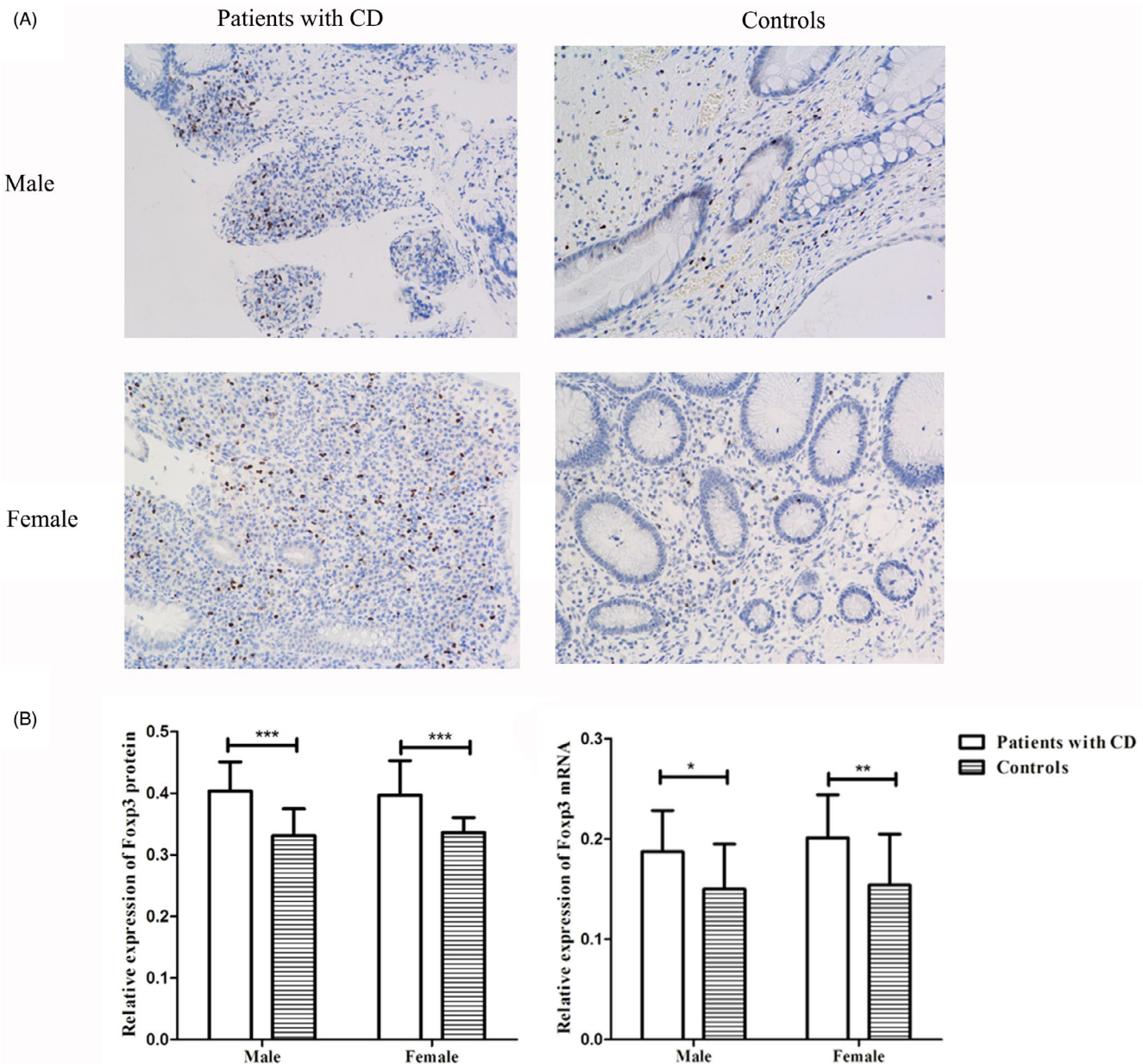
**TABLE 4** Haplotype frequencies of *Foxp3* (rs3761547, rs2232365, rs2294021, rs3761548) in patients with Crohn's disease (CD) and controls

Haplotypes	ATAC	ACGA	GCGC
Male controls (n = 222) (%)	147 (66.22)	31 (13.96)	43 (19.37)
Male patients with CD (n = 137) (%)	77 (56.20)	19 (13.87)	40 (29.20) <sup>a</sup>
B1 (n = 74) (%)	35 (47.30)	9 (12.16)	29 (39.19)
B2 (n = 56) (%)	41 (73.21) <sup>b</sup>	5 (8.93)	10 (17.86) <sup>c</sup>
B3 (n = 7) (%)	1 (14.29)	5 (71.43) <sup>d</sup>	1 (14.29)
L1 (n = 45) (%)	21 (46.67)	4 (8.89)	20 (44.44)
L2 (n = 27) (%)	7 (25.93) <sup>e</sup>	5 (18.52)	14 (51.85) <sup>f</sup>
L3 (n = 65) (%)	49 (75.38)	10 (15.38)	6 (9.23)
Female controls (2n = 536) (%)	301 (56.16)	102 (19.03)	100 (18.66)
Female patients with CD (2n = 262) (%)	158 (60.31)	35 (13.36) <sup>g</sup>	60 (22.90)
B1 (2n = 162) (%)	98 (60.49)	22 (13.58)	36 (22.22)
B2 (2n = 70) (%)	48 (68.57)	5 (7.14)	14 (20.00)
B3 (2n = 30) (%)	12 (40.00)	8 (26.67)	10 (33.33)
L1 (2n = 98) (%)	55 (56.12)	10 (10.20)	30 (30.61)
L2 (2n = 74) (%)	40 (54.05)	12 (16.22)	17 (22.97)
L3 (2n = 90) (%)	63 (70.00)	13 (14.44)	13 (14.44)

CI, confidence interval; OR, odds ratio. *Bonferroni* correction was particularly used for stratified analyses, and the threshold was calculated as  $0.05/4 = 0.0125$ . Haplotype frequencies less than 3% were not shown in the table.

<sup>a</sup>Male patients with CD vs Controls, OR = 1.717, 95% CI: 1.045-2.820,  $P = 0.032$ . Non-Strictureing, non-penetrating CD vs strictureing CD, <sup>b</sup>OR = 0.328, 95% CI: 0.156-0.693,  $P = 0.003$ , <sup>c</sup>OR = 2.946, 95% CI: 1.295-6.784,  $P = 0.009$ . Non-Strictureing, non-penetrating CD vs penetrating CD, <sup>d</sup>OR = 0.055, 95% CI: 0.009-0.329,  $P < 0.001$ . Colonic CD vs ileocolonic CD, <sup>e</sup>OR = 0.114, 95% CI: 0.041-0.320,  $P < 0.001$ , <sup>f</sup>OR = 10.590, 95% CI: 3.423-32.758,  $P < 0.001$ . <sup>g</sup>Female patients with CD vs Controls, OR = 0.656, 95% CI: 0.433-0.995,  $P = 0.046$ .

The present study primarily suggested that the rs3761547 variation might confer an enhanced risk for CD in male individuals. Moreover, the rs3761547, rs2232365, rs2294021, and rs3761548 variations, as well as the haplotypes GCGC, ACGA, and ATAC formed by the four SNPs, might exert a potential effect on the behaviors and/or locations of CD in male patients. These findings suggested that *Foxp3* might be a candidate gene for CD in Chinese males. Several genetic studies implicated the polymorphisms of *Foxp3* in the risk of autoimmune and allergic diseases and demonstrated significant gender-based differences in the distribution of *Foxp3* polymorphisms. For instance, a previous study in Hungarian population showed that the variant homozygote (AA) of rs3761548 was a protective factor against AR in female patients.<sup>9</sup> However, the allele and genotype distributions of this SNP did not differ significantly between the male patients and controls.<sup>9</sup> Gao et al investigated a Chinese Han population and reported that the variant genotype



**FIGURE 2** Expression of *Foxp3* in colonic tissues from patients with CD and controls. The protein expression and mRNA expression of *FOXP3* were evaluated quantitatively using the Image-Pro Plus 6.0 and the  $\Delta$ Ct method, respectively. A, Immunohistological images of the expression of *Foxp3*. *Foxp3* was detected in mucosa lamina propria with nuclear staining. Sections are shown at magnifications of  $\times 200$ . B, The protein expression and mRNA expression of *Foxp3* in male and female subjects. \* $P < 0.05$ , \*\* $P < 0.01$ , \*\*\* $P < 0.001$

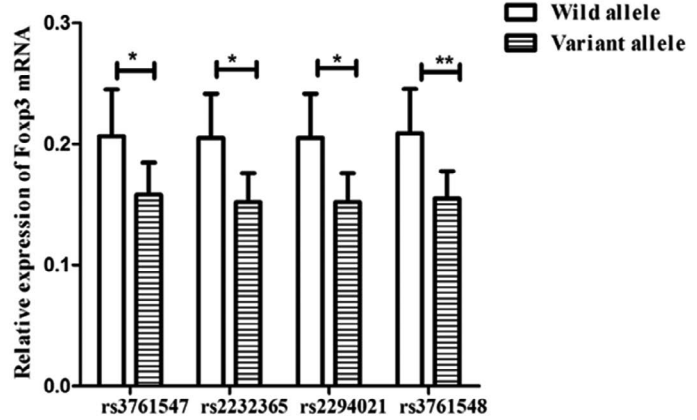
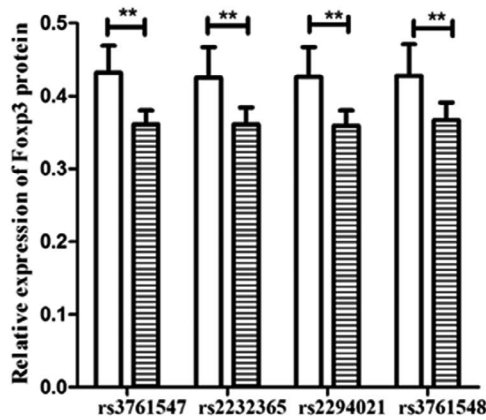
(CA+AA) of *Foxp3* rs3761548 engendered the enhanced risk of psoriasis in male individuals. The study speculated that this gender discrepancy was primarily attributed to the localization of *Foxp3* on the X chromosome.<sup>21</sup>

Wildin et al<sup>22</sup> found that the genes on the alternative X chromosome could interact with *Foxp3* locus via X inactivation, thereby modifying the expression of *Foxp3*. Moreover, the effects of gender-specific hormones (eg, estrogen) or imprinting and an epigenetic phenomenon, wherein the allelic expression relies on the gender of the parent from whom this specific allele is inherited, cannot be ignored.<sup>22,23</sup> Interestingly, the Y chromosome-linked

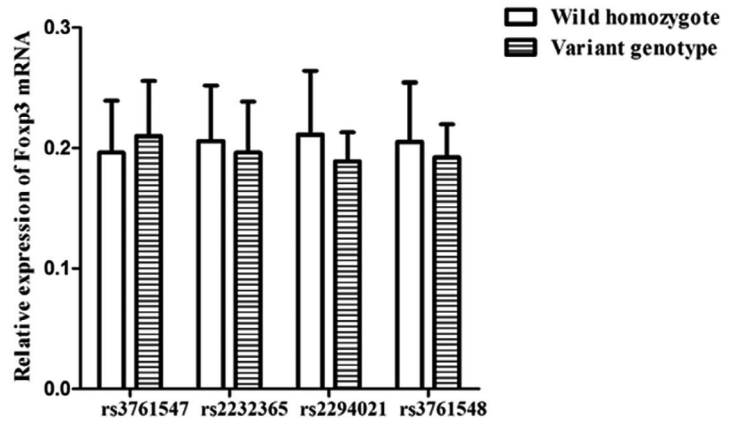
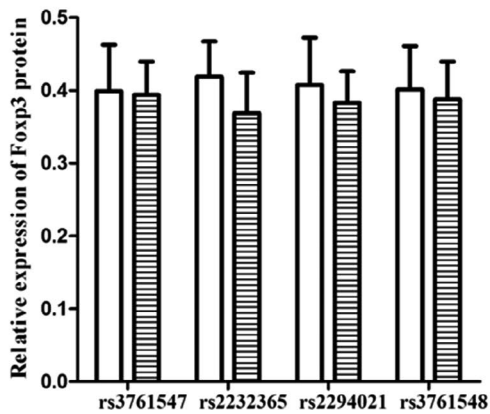
polymorphisms might differentially regulate the expression of X-linked genes.<sup>24</sup> Thus, it can be hypothesized that the *Foxp3* gene expression might be differentially modulated in males and females through the suppressive or activation mechanisms mediated by the Y chromosome.

Subsequently, the present study analyzed the influence of *Foxp3* polymorphisms on the colonic expression of *Foxp3* in patients with CD. Consistent with the results of the previous study by Wang et al,<sup>25</sup> the colonic expressions of *Foxp3* mRNA and protein are shown to be upregulated in patients with CD. Moreover, the variations of rs3761547, rs2232365, rs2294021, and rs3761548

## Male



## Female



**FIGURE 3** Expression of *Foxp3* protein and mRNA in patients with CD harboring the different alleles or genotypes of *Foxp3* (rs3761547, rs2232365, rs2294021, and rs3761548). The protein expression and mRNA expression of *Foxp3* were quantitatively evaluated using the Image-Pro Plus 6.0 and the  $\Delta C_t$  method, respectively. Variant genotypes: heterozygote and variant homozygote. \* $P < 0.05$ , \*\* $P < 0.01$ , \*\*\* $P < 0.001$

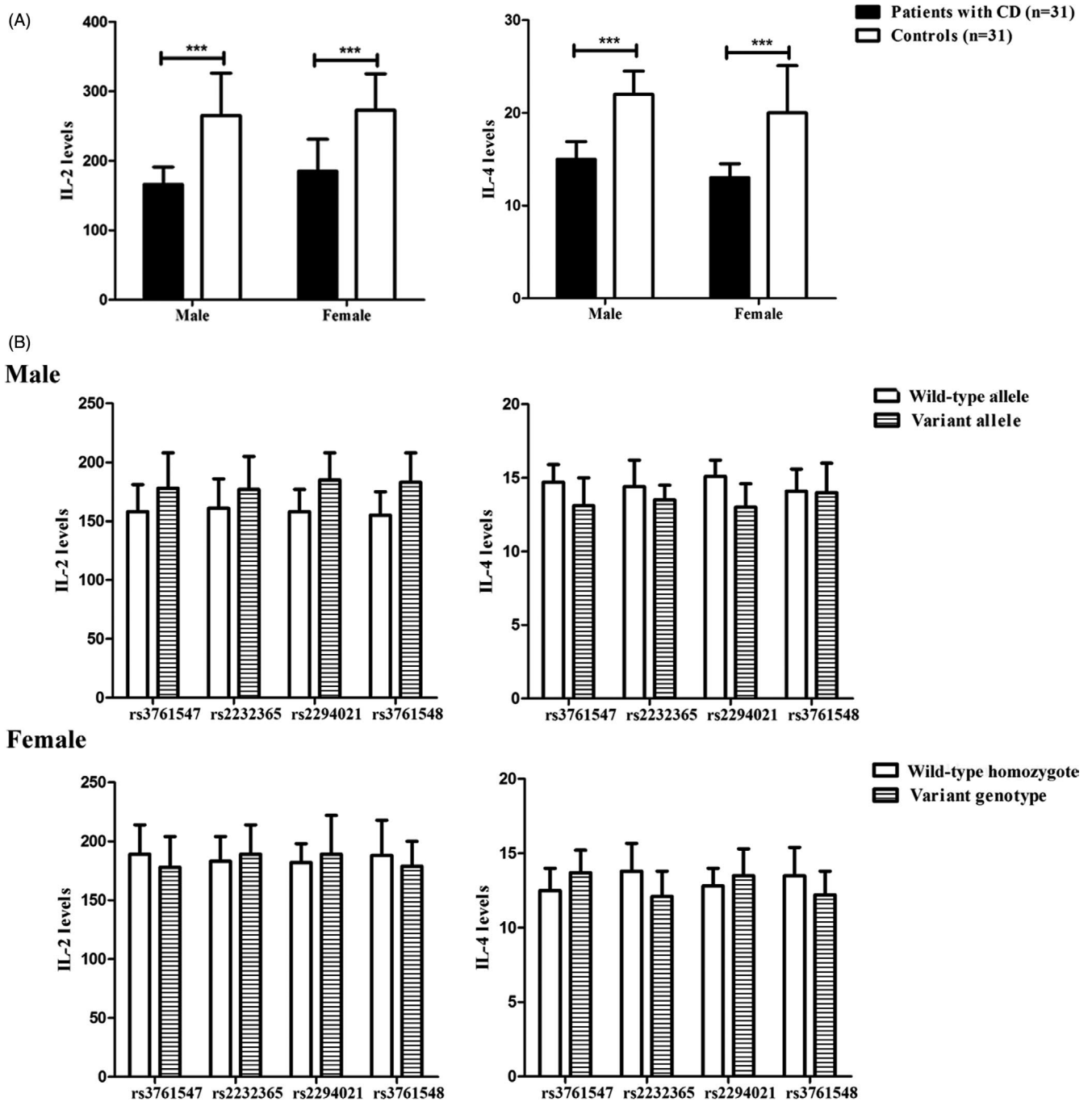
were related to the low colonic expressions of *Foxp3* in male patients but not in females. Theoretically, rs3761547, rs2232365, and rs3761548 occur in the promoter region of *Foxp3* that could foster a decreased expression of *Foxp3* by preventing the binding of some transcription factors to the corresponding site.<sup>26–28</sup> In addition, *Foxp3* rs2294021 exists in the 3'-untranslated intron region of the gene and modulates the *Foxp3* mRNA expression level as well as the binding of *Foxp3* mRNA to other proteins.<sup>29</sup> Furthermore, in a related biochemical assay, the minor allele of rs2294021 was reported to enhance the *Foxp3* mRNA expression owing to the dramatically improved transcriptional activity of *Foxp3*.<sup>29</sup> Another previous study from Denmark reported that the rs3761548 variation might elevate the risk of CD due to skewed X chromosome inactivation (SXI) in male individuals as opposed to females; the population differences were characterized by low expression levels of *Foxp3* and the decreased numbers of Treg cells.<sup>30</sup> Moreover, the above studies explained the genetic variations of *Foxp3* might contribute to the increased risk of CD in males.

Notably, in the current study, the females carrying haplotype (ACGA) were less susceptible to CD. However, we failed to

draw similar conclusions when the four SNPs in the *Foxp3* gene among female CD patients and the controls were investigated. To date, none of the studies have associated the haplotypes of *Foxp3* polymorphisms to CD susceptibility or its clinical outcome, thereby making the present study as the first to describe such a correlation.

In summary, the present study suggested that *Foxp3* polymorphisms might increase the CD susceptibility by reducing the colonic expression of *Foxp3* in males. Nevertheless, the colonic expression of *Foxp3* was not measured in all patients, but only in subgroups. Nonetheless, whether the subgroups used for examining the expression of *Foxp3* were representative of the full cohort of study subjects in terms of the influences of gender, *Foxp3* polymorphisms, or predisposition of CD in patients could not be confirmed. In addition, the present study on the association of *Foxp3* polymorphisms with the risk of CD had a poor statistical power (<80% for each of the SNPs) due to limited sample size. Thus, large sample studies or population replication studies are imperative for identifying the precise relationship between *Foxp3* polymorphisms and CD susceptibility.





**FIGURE 4** Expression levels of IL-2 and IL-4 in colonic tissues from patients with CD and controls (A). The association of *Foxp3* polymorphisms with expression levels of IL-2 and IL-4 in male and female patients with CD (B). Variant genotypes: heterozygote and variant homozygote. \* $P < 0.05$ , \*\* $P < 0.01$ , \*\*\* $P < 0.001$

#### CONFLICT OF INTEREST

The authors declare that they have no competing interests.

#### REFERENCES

- Huang Z, Shi T, Zhou Q, et al. miR-141 Regulates colonic leukocytic trafficking by targeting CXCL12 $\beta$  during murine colitis and human Crohn's disease. *Gut*. 2014;63:1247-1257.
- Chao K, Zhang S, Yao J, et al. Imbalances of CD4<sup>+</sup> T-cell subgroups in Crohn's disease and their relationship with disease activity and prognosis. *J Gastroenterol Hepatol*. 2014;29:1808-1814.
- Eastaff-Leung N, Mabarrack N, Barbour A, et al. *Foxp3*<sup>+</sup> regulatory T cells, Th17 effector cells, and cytokine environment in inflammatory bowel disease. *J Clin Immunol*. 2010;30:80-89.
- Maddur MS, Miossec P, Kaveri SV, et al. Th17 cells: biology, pathogenesis of autoimmune and inflammatory diseases, and therapeutic strategies. *Am J Pathol*. 2012;181:8-18.

5. Maul J, Loddenkemper C, Mundt P, et al. Peripheral and intestinal regulatory CD4<sup>+</sup> CD25<sup>(high)</sup> T cells in inflammatory bowel disease. *Gastroenterology*. 2005;128:1868-1878.
6. Sakaguchi S. Naturally arising Foxp3-expressing CD25<sup>+</sup>CD4<sup>+</sup> regulatory T cells in immunological tolerance to self and non-self. *Nat Immunol*. 2005;6:345-352.
7. Bettelli E, Dastrange M, Oukka M. Foxp3 interacts with nuclear factor of activated T cells and NF-kappa B to repress cytokine gene expression and effector functions of T helper cells. *Proc Natl Acad Sci U S A*. 2005;102:5138-5143.
8. Lin YC, Lee JH, Wu AS, et al. Association of single-nucleotide polymorphisms in FOXP3 gene with systemic lupus erythematosus susceptibility: a case-control study. *Lupus*. 2011;20:137-143.
9. Fodor E, Garaczi E, Polyánka H, et al. The rs3761548 polymorphism of FOXP3 is a protective genetic factor against allergic rhinitis in the Hungarian female population. *Hum Immunol*. 2011;72:926-929.
10. Ban Y, Tozaki T, Tobe T, et al. The regulatory T cell gene FOXP3 and genetic susceptibility to thyroid autoimmunity: an association analysis in Caucasian and Japanese cohorts. *J Autoimmun*. 2007;28:201-207.
11. Song QH, Shen Z, Xing XJ, et al. An association study of single nucleotide polymorphisms of the FOXP3 intron-1 and the risk of Psoriasis vulgaris. *Indian J Biochem Biophys*. 2012;49:25-35.
12. Song P, Wang XW, Li HX, et al. Association between FOXP3 polymorphisms and vitiligo in a Han Chinese population. *Br J Dermatol*. 2013;169:571-578.
13. Wu Z, You Z, Zhang C, et al. Association between functional polymorphisms of Foxp3 gene and the occurrence of unexplained recurrent spontaneous abortion in a Chinese Han population. *Clin Dev Immunol*. 2012;2012:1-7.
14. Xia SL, Lin XX, Guo MD, et al. Association of vitamin D receptor gene polymorphisms and serum 25-hydroxyvitamin D levels with Crohn's disease in Chinese patients. *J Gastroenterol Hepatol*. 2016;31:795-801.
15. Satsangi J, Silverberg MS, Vermeire S, et al. The Montreal classification of inflammatory bowel disease: controversies, consensus, and implications. *Gut*. 2006;55:749-753.
16. Hori S, Nomura T, Sakaguchi S. Control of regulatory T cell development by the transcription factor Foxp3. *Science*. 2003;299:1057-1061.
17. Fontenot JD, Gavin MA, Rudensky AY. Foxp3 programs the development and function of CD4<sup>+</sup>CD25<sup>+</sup> regulatory T cells. *Nat Immunol*. 2003;4:330-336.
18. Gagliani N, Amezcuea VMC, Iseppon A, et al. Th17 cells transdifferentiate into regulatory T cells during resolution of inflammation. *Nature*. 2015;523:221-225.
19. van der Vliet HJ, Nieuwenhuis EE. IPEX as a result of mutations in FOXP3. *Clin Dev Immunol*. 2007;2007:1-5.
20. Bassuny WM, Ihara K, Sasaki Y, et al. A functional polymorphism in the promoter/enhancer region of the FOXP3/Scurfin gene associated with type 1 diabetes. *Immunogenetics*. 2003;55:149-156.
21. Gao L, Li K, Li F, et al. Polymorphisms in the FOXP3 gene in Han Chinese psoriasis patients. *J Dermatol Sci*. 2010;57:51-56.
22. Wildin RS, Freitas A. IPEX and FOXP3: clinical and research perspectives. *J Autoimmun*. 2005;25(Suppl):56-62.
23. Nie J, Li YY, Zheng SG, et al. FOXP3(+) Treg cells and gender bias in autoimmune diseases. *Front Immunol*. 2015;6:493.
24. Lemos B, Araripe LO, Hartl DL. Polymorphic Y chromosomes harbor cryptic variation with manifold functional consequences. *Science*. 2008;319:91-93.
25. Wang Y, Liu XP, Zhao ZB, et al. Expression of CD4<sup>+</sup> forkhead box P3(FOXP3)<sup>+</sup> regulatory T cells in inflammatory bowel disease. *J Dig Dis*. 2011;12:286-294.
26. Shen Z, Chen L, Hao F, et al. Intron-1 rs3761548 is related to the defective transcription of Foxp3 in psoriasis through abrogating E47/c-Myb binding. *J Cell Mol Med*. 2010;14:226-241.
27. Carson BD, Lopes JE, Soper DM, et al. Insights into transcriptional regulation by FOXP3. *Front Biosci*. 2006;11:1607-1619.
28. Fantini MC, Becker C, Monteleone G, et al. Cutting edge: TGF-beta induces a regulatory phenotype in CD4<sup>+</sup>CD25<sup>-</sup> T cells through Foxp3 induction and down-regulation of Smad7. *J Immunol*. 2004;172:5149-5153.
29. Zheng J, Deng J, Jiang L, et al. Heterozygous genetic variations of FOXP3 in Xp11.23 elevate breast cancer risk in Chinese population via skewed X-chromosome inactivation. *Hum Mutat*. 2013;34:619-628.
30. Brix TH, Knudsen GP, Kristiansen M, et al. High frequency of skewed X-chromosome inactivation in females with autoimmune thyroid disease: a possible explanation for the female predisposition to thyroid autoimmunity. *J Clin Endocrinol Metab*. 2005;90:5949-5953.

## SUPPORTING INFORMATION

Additional supporting information may be found online in the Supporting Information section at the end of the article.

**How to cite this article:** Xia S, Zhang D, Zheng S, et al. Association of Crohn's disease with Foxp3 gene polymorphisms and its colonic expression in Chinese patients. *J Clin Lab Anal*. 2019;33:e22835. <https://doi.org/10.1002/jcla.22835>