

Identification of the Major Physiologic Phosphorylation Site of Human Keratin 18: Potential Kinases and a Role in Filament Reorganization

Nam-On Ku and M. Bishr Omary

Palo Alto Veterans Administration Medical Center, Palo Alto, CA 94304; and the Digestive Diseases Center, Stanford University School of Medicine, Stanford, California 94305-5487

Abstract. There is ample in vitro evidence that phosphorylation of intermediate filaments, including keratins, plays an important role in filament reorganization. In order to gain a better understanding of the function of intermediate filament phosphorylation, we sought to identify the major phosphorylation site of human keratin polypeptide 18 (K18) and study its role in filament assembly or reorganization. We generated a series of K18 ser→ala mutations at potential phosphorylation sites, followed by expression in insect cells and comparison of the tryptic $^{32}\text{PO}_4$ -labeled patterns of the generated constructs. Using this approach, coupled with Edman degradation of the $^{32}\text{PO}_4$ -labeled tryptic peptides, and comparison with tryptic peptides analyzed after labeling normal human colonic tissues, we identified ser-52 as the major K18 physiologic

phosphorylation site. Ser-52 in K18 is not glycosylated and matches consensus sequences for phosphorylation by CAM kinase, S6 kinase and protein kinase C, and all these kinases can phosphorylate K18 in vitro predominantly at that site. Expression of K18 ser-52→ala mutant in mammalian cells showed minimal phosphorylation but no distinguishable difference in filament assembly when compared with wild-type K18. In contrast, the ser-52 mutation played a clear but nonexclusive role in filament reorganization, based on analysis of filament alterations in cells treated with okadaic acid or arrested at the G2/M stage of the cell cycle. Our results show that ser-52 is the major physiologic phosphorylation site of human K18 in interphase cells, and that its phosphorylation may play an in vivo role in filament reorganization.

INTERMEDIATE filaments (IF)¹ consist of a broad family of nuclear (i.e., lamins) and cytoplasmic (e.g., keratins, neurofilaments [NF], vimentin, desmin) cytoskeletal proteins (reviewed in Steinert and Roop, 1988; Klymkowsky et al., 1989; Skalli and Goldman, 1991). The function(s) of the cytoplasmic IF remain largely unknown. However, recent identification of point mutations in a number of epidermal keratins as a likely cause of three skin diseases (reviewed in Fuchs and Coulombe, 1992; Compton, 1994) strongly support a structural/mechanical integrity role at least for the epidermal keratins (Coulombe et al., 1991). For the glandular epithelial keratins, a role in the integrity of fetal liver was demonstrated by a targeted null mutation in mouse keratin polypeptide 8 gene, with fetal lethality and

extensive hepatic hemorrhage in most mice (Baribault et al., 1993). There is also evidence for keratins playing an important role in *Xenopus* gastrulation, based on injection of anti-keratin antibodies (Klymkowsky et al., 1992) or injection of antisense oligodeoxynucleotides into oocytes (Torpey et al., 1992). In the case of neurofilaments, overexpression of NF-L (Xu et al., 1993) and NF-H (Cote et al., 1993) in transgenic mice resulted in a disease resembling amyotrophic lateral sclerosis. In addition, NF-deficient axons have a small caliber as noted in the NF-deficient Japanese quail (Ohara et al., 1993) and in transgenic mice expressing an NF- β -galactosidase fusion protein (Eyer and Peterson, 1994). These findings suggest that NF may play a role in axonal caliber and neuronal transmission.

Although the function(s) of cytoplasmic IF is not fully understood, it is likely that IF are similar to other proteins in that at least some aspects of their function are regulated by posttranslational modifications they undergo. In the case of keratin polypeptide 8 and 18 (K8/18), which are the major keratin pair that is expressed in glandular epithelia, two potential regulatory posttranslational modifications are phosphorylation (Celis et al., 1983; Baribault et al., 1989; Klymkowsky et al., 1991; Yano et al., 1991; Chou and Omary,

Address reprint requests to Nam-On Ku, and other correspondence to M. B. Omary at Stanford University School of Medicine, Lab Surge Building, Room P304, Stanford, CA 94305-5487.

1. *Abbreviations used in this paper:* ala, alanine; IF, intermediate filaments; K8/18, keratin polypeptide 8 and 18; NF, neurofilaments; PKC, protein kinase C; *SF9*, *Spodopetra frugiperda*; trp, tryptophan; UDP, uridine diphosphate; WT, wild-type.

1993) and glycosylation (Chou et al., 1992). In vitro phosphorylation of K8/18 using a number of kinases (Yano et al., 1991), or enhanced phosphorylation of a number of keratins in cells arrested in mitosis (Chou and Omary, 1993) or treated with the phosphatase inhibitor okadaic acid (Yatsunami et al., 1993) are associated with disassembly and rearrangement of the keratin filaments.

Phosphorylation of human K8 and 18 occurs on serine residues and increases dramatically after arresting cells at the G2/M stage of the cell cycle using anti-microtubule agents such as colcemid or nocodazole (Chou and Omary, 1993). In the case of K18, all the phosphorylation occurs within the NH₂-terminal 125 amino acids which include the head and proximal rod domains (Chou and Omary, 1993). Recently, we coexpressed K8 and K18 in *Spodopetra frugiperda* (Sf9) insect cells using recombinant baculovirus constructs and showed that the expressed keratins can assemble into disorganized filaments (Ku and Omary, 1994). We also showed that phosphorylation and glycosylation of K8/18 is highly conserved among insect and human tissue cultured cells, particularly for K18 (Ku and Omary, 1994). For example, K18 expressed in insect Sf9 cells was phosphorylated on serine within the first 125 amino acid residues and showed a tryptic phosphopeptide pattern that was nearly identical to that seen in human colonic HT29 cells. The tryptic phosphopeptide pattern of K18 in ³²PO₄-labeled HT29 and K18-recombinant baculovirus infected Sf9 cells showed several spots consistent with phosphorylation at multiple sites. However, one spot predominated as a major phosphopeptide in both cell types (Ku and Omary, 1994). One noted difference between insect and human tissue culture cells was in the K8:K18 phosphorylation ratio, such that phosphorylation was K8>K18 in HT29 cells and K18>K8 in Sf9 cells (Ku and Omary, 1994).

In this report, we first show that phosphorylation of K18 and K8 in HT29 tissue culture cells is very similar to what is seen in ex vivo isolated normal colonic tissues. We then use a mutational approach of K18 coupled with expression in insect cells to identify ser-52 as the major phosphorylation site of K18 in interphase cells. A ser-52→alanine (ala) mutation did not alter filament assembly in transfected mammalian cells, but did interfere with filament reorganization in cells arrested at the G2/M stage of the cell cycle or cells treated with okadaic acid.

Materials and Methods

Cell Culture, Tissues, and Reagents

HT29 (human colon), NIH-3T3 (mouse fibroblast), NMuLi (mouse liver) (American Type Culture Collection, Rockville, MD), and SW13 cells (Clone 1.1, vimentin positive human adrenal, kindly provided by Dr. R. Evans, University of Colorado, Denver, CO) were grown in media recommended by the providers. Rectal biopsies were obtained from patients undergoing routine colonoscopy for polyp screening under a protocol approved by the Medical Committee for the Protection of Human Subjects on Research at Stanford University. The radiochemicals uridine diphosphate (UDP) - [4 -³H]galactose, orthophosphate (³²PO₄), and [γ -³²P]ATP (3,000 Ci/mmol) were purchased from Du Pont-New England Nuclear. Other reagents used were: bovine milk galactosyltransferase, myelin basic protein (MBP), and colcemid (Sigma Chem. Co., St. Louis, MO); Baculo-Gold transfection kit and Sf9 insect cells (PharMingen, San Diego, CA); phenyl isothiocyanate (Pierce Chem. Corp.); okadaic acid (LC Services, Woburn, MA). The cDNA for wild-type (WT) human K8 and K18 were kindly provided by J. F. Strauss (Yamamoto et al., 1990) and R. Oshima

(Oshima et al., 1986), respectively. The S6 and calcium/calmodulin-dependent (CAM) kinases were gifts from James Maller (University of Colorado, Denver, CO) and Howard Schulman (Stanford University, Palo Alto, CA), respectively, and protein kinase C (PKC) α and ϵ were obtained from Berta Strulovici (Syntex Research, Palo Alto, CA).

Construction of Mutants and Baculovirus Recombinants

The cDNA for K8 and K18 were subcloned into the pBluescript SK+ plasmid. Site-directed mutagenesis to generate serine (ser)→ala mutants were carried out using a Transformer™ kit (Clontech, Palo Alto, CA). This method is based on annealing two oligonucleotide primers, one which introduces the desired mutation and the second which mutates a restriction site unique to the plasmid for selection (Deng and Nickoloff, 1992). All primers contained 1-3 mutations with 8-10 nucleotides flanking the first mutation on either end. Mutations at nonconsecutive serines were generated using multiple primers, and all mutations were confirmed by sequencing the mutagenized regions of both strands. Mutants were subcloned into the pVL1392 vector for expression in Sf9 cells, or downstream of the hCMV promoter in pMRB101 mammalian expression vector (Stephens and Cockett, 1989). Generation of the baculovirus recombinants was done exactly as described (Ku and Omary, 1994).

Transient and Stable Transfection

Transfection was done using LipofectAMINE™ liposomes (GIBCO BRL). Selection of stable transfectants was done by growing cells in the presence of 250 μ g/ml xanthine, 15 μ g/ml hypoxanthine, 10 μ g/ml thymidine, 2 μ g/ml aminopterin, 25 μ g/ml mycophenolic acid, 150 μ g/ml glutamine, and fetal calf serum dialyzed against 0.15 M NaCl. Transfectants were then subcloned by limiting dilution. Sodium butyrate was used to enhance the expression of K8/18 in stably transfected NIH-3T3 cells (Gorman et al., 1983), before labeling cells with ³²PO₄. For this, cells were incubated with 10 mM sodium butyrate (using 1 M stock solution) for 16-18 h before (and during) ³²PO₄ labeling. It resulted in a 3-5-fold increase in K8/18 expression without affecting cell viability, IF phosphorylation or organization (not shown).

Immunofluorescence Microscopy

Transfected mammalian cells, or Sf9 cells infected with K8/18 recombinant baculovirus constructs were grown on coverslips. Alternatively, transfected cells were treated with okadaic acid (1 μ g/ml) for 30-60 min, or with colcemid (0.5 μ g/ml) for 36 h followed by collection of floater and easily released cells and transferring to slides using a Cytospin (700 rpm, 6 min). Cells were then fixed in methanol (3 min, -20°C), rinsed with PBS then PBS containing 2.5% BSA. After washing, cells were incubated with monoclonal anti-K8/18 antibody (termed L2A1; Chou and Omary, 1991) in PBS containing 2.5% BSA and 10% vol/vol of cytoplasmic cell extract obtained from similar nontransfected cells (to block nonspecific binding). After 30 min, slides were washed then incubated with Texas red-conjugated goat anti-mouse antibody (30 min, 22°C) in PBS containing 2.5% BSA, 10% (vol/vol) goat serum and 10% (vol/vol) nontransfected cell cytoplasmic extract.

For quantitation of filament reorganization, cells from each treatment were counted (102-278 cells/treatment condition of a cell transfectant). Counted cells were categorized as having an exclusive punctate pattern or a mixed punctate/filamentous pattern (grouped as disrupted) or cells that lack any punctate pattern (grouped as normal filaments). The percent reorganization was quantitated as number of cells with disrupted filaments/number of cells with normal + disrupted filaments \times 100. Photos were taken using black and white Kodak TMAX 400 film. The mitotic index (%G2/M cells) was determined using propidium iodide staining as described (Chou and Omary, 1993).

Radiolabeling

Human colon biopsies and tissue culture cells were labeled with ³²PO₄ for 3-6 h (250 μ Ci/ml) in phosphate-free RPMI 1640 medium containing 10% dialyzed fetal calf serum. K8/18 were then isolated by immunoprecipitation or high salt extraction as described below. Analysis of K8/18 glycosylation was done by labeling accessible K8/18 terminal GlcNAcs by galactosylating K8/18 immunoprecipitates using UDP-[³H]galactose and galactosyltransferase exactly as described (Ku and Omary, 1994).

Keratin Isolation

Immunoprecipitation was used to analyze K8/18 from cells labeled metabolically with $^{32}\text{PO}_4$, or to isolate keratins for further glycosylation analysis or kinase assays. For this, mammalian and insect cells were solubilized in 1% NP-40 in PBS containing 10 mM EDTA, 0.1 mM phenylmethanesulfonylfluoride (added fresh), 10 μM leupeptin, 10 μM pepstatin, and 25 $\mu\text{g}/\text{ml}$ aprotinin (buffer A) (45 min, 4°C). After removal of nuclei (10,000 g; 10 min), cell lysates were incubated with anti-K8/18 MAb conjugated to Sepharose beads (45 min, 4°C) followed by washing. Alternatively, keratins were isolated from $^{32}\text{PO}_4$ labeled cells using high salt extraction (Achtstaetter et al., 1986) exactly as described (Chou et al., 1993). K8/18 was also isolated from normal colonic biopsies by homogenization of the labeled tissue fragments in buffer A using a Dounce homogenizer, followed by centrifugation and immunoprecipitation.

Biochemical Studies

Tryptic glyco- and phosphopeptide mapping was carried out as described (Chou et al., 1993). In the case of $^{32}\text{PO}_4$ -labeled K8/18, individual keratins were isolated after preparative SDS-PAGE by cutting K8 or K18 bands visualized by brief Coomassie blue staining followed by electroelution then acetone precipitation. Keratin precipitates were treated with trypsin (375 $\mu\text{g}/\text{ml}$ in 80 μl of 50 mM NH_4HCO_3) for 16 h followed by a lyophilization then analysis in the horizontal dimension by electrophoresis (pH 1.9 buffer) (Boyle et al., 1991) and in the vertical dimension by chromatography.

Manual Edman degradation was carried out as described (Boyle et al., 1991) using tryptic digests of K18 that were purified from *in vivo* $^{32}\text{PO}_4$ -labeled HT29 or Sf9 cells. Individual peptides were not separated before modification with phenyl isothiocyanate in the case of asynchronously growing HT29 cells, since >90% of the radioactivity contained in the $^{32}\text{PO}_4$ -labeled tryptic digest was in the ser-52-containing peptide that was being studied. For analysis of the ser-52-containing phosphopeptide from G2/M arrested HT29 cells, the specific peptide was scraped from six cellulose chromatography plates. The $^{32}\text{PO}_4$ -labeled peptide was then extracted using water (~15,000 cpm) followed by manual Edman degradation.

In Vitro Kinase Assays

Phosphorylation of K8/18 immunoprecipitates obtained from HT29 cells

was carried out using rat brain PKC α and ϵ (Omary et al., 1992), CAM kinase (Hanson and Schulman, 1992), and *Xenopus* ribosomal S6 kinase II (Erikson et al., 1991). Immunoprecipitates were first boiled for 2 min to remove endogenous kinase activity. S6 kinase reactions were done in: 20 mM Hepes (pH 7), 3.3 mM 2-mercaptoethanol, and 10 mM MgCl_2 . Other kinase reactions were done in 50 mM Pipes (pH 7), 5 mM MgCl_2 , 10 mM MnCl_2 which also contained: 5 mM CaCl_2 , 5 $\mu\text{g}/\text{ml}$ calmodulin (for CAM kinase); phorbol 12-myristate 13-acetate (1 μM), diacyl glycerol (4 $\mu\text{g}/\text{ml}$), phosphatidylserine (40 $\mu\text{g}/\text{ml}$) (for PKC α and ϵ). In addition, the PKC α reaction contained 1 mM CaCl_2 and the PKC ϵ reaction contained 1 mM EGTA. All reactions were done in a total volume of 25 μl that also contained 10 μM ATP and 5 μCi of [γ - ^{32}P]ATP. After addition of the respective kinases (10 min, 22°C), 25 μl of 10% glycerol, 4% SDS sample buffer was added (Laemmli, 1970). Samples were then analyzed by SDS-PAGE and autoradiography, or tryptic peptide mapping of purified K18.

Results

Phosphorylation of K8/18 in Sf9 and HT29 Cells Correlates with Phosphorylation in Normal Human Tissues

We recently showed that phosphorylation of K8 and K18 expressed in Sf9 insect cells was very similar to that noted in HT29 human colonic tissue cultured cells, particularly for K18 (Ku and Omary, 1994). Before embarking on the identification of K8 and K18 phosphorylation sites in Sf9 and HT29 model systems, we sought to confirm that the labeled phosphopeptides in HT29 cells reflect the physiologically labeled sites in normal tissues. As shown in Fig. 1 A, K8/18 can be phosphorylated after labeling biopsies of normal human colon *ex vivo* with $^{32}\text{PO}_4$. Incorporation of $^{32}\text{PO}_4$ into the type II keratin (i.e., K8) was higher than the type I keratin (i.e., K18) as seen in HT29 cells (Chou and Omary, 1993), *Xenopus* oocytes (Klymkowsky et al., 1991) and rat hepato-

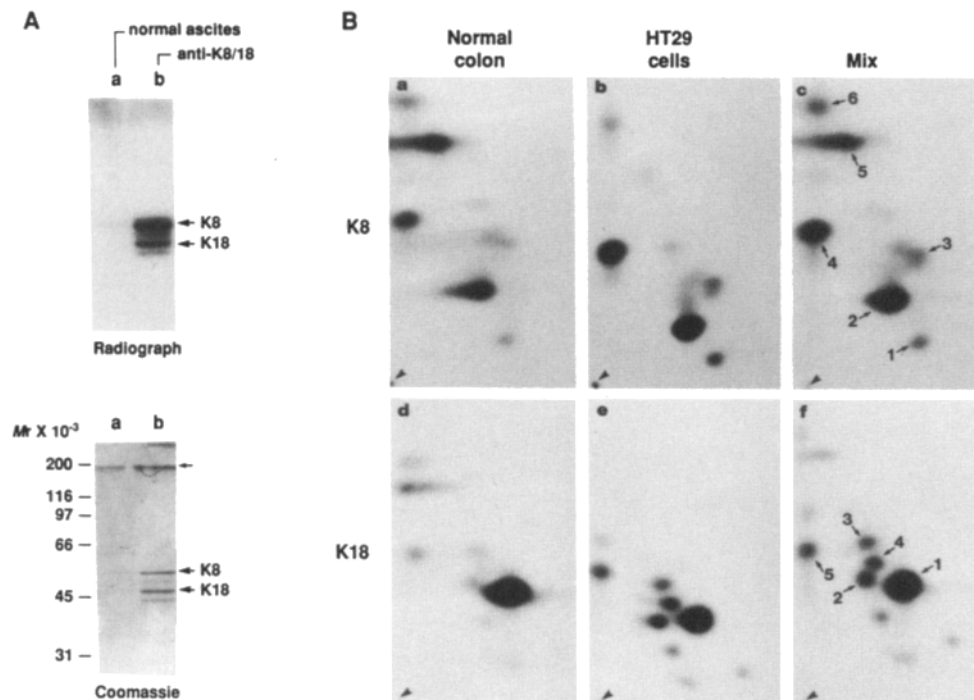


Figure 1. Comparison of human K8 and K18 phosphorylation in HT29 cells and normal colonic biopsies. (A) Normal mucosal rectal biopsies were obtained from two patients undergoing routine colonoscopy for polyp screening. After rinsing in RPMI 1640 medium, biopsies were cut into small pieces then labeled with $^{32}\text{PO}_4$ for 3 h, followed by detergent solubilization and immunoprecipitation using anti-K8/18 MAb (lane b) or normal mouse ascites (lane a). The radiograph was obtained by exposing the Coomassie-stained gel shown. Arrowhead indicates migration of antibody used for immunoprecipitation. (B) K8 and K18 were individually purified (using SDS-PAGE followed by cutting out of individual bands and electroelution) from HT29 cells that were radiolabeled

with phosphate, or from the labeled normal colonic biopsies used in A. Purified K8 and K18 were digested with trypsin for peptide mapping. Electrophoresis and chromatography were in the horizontal and vertical directions, respectively. Arrowheads correspond to origin of sample loading. Mixture maps (c and f) contained tryptic digests a + b and d + e, respectively (1,000 cpm from each tryptic digest). Numbered arrows correspond to prominent peptides.

cytes (Yano et al., 1991). Comparison of the tryptic phosphopeptides of K8 and K18 isolated from normal human colon versus tissue cultured cells showed significant identity (Fig. 1 B). For example, all the numbered peptides for K8 were shared and similar in labeling intensity (Fig. 1 B, c) except peptide 5 which was labeled primarily in normal colon. Similarly, the minor labeled peptides 2–5 of K18 were shared although more prominent in HT29 cells, with peptide 1 being the major labeled species in normal colon and HT29 cells (Fig. 1 B) and in Sf9 cells (Ku and Omary, 1994; and see Fig. 3 below).

Identification of ser-52 as the Major Phosphorylation Site of K18

In order to identify the major phosphorylation site of K18, we used a systematic approach of generating a series of K18 constructs that contain ser→ala mutations at potential phosphorylation sites. That approach was based on our biochemical data showing that phosphorylation of K18 in Sf9 cells (Ku and Omary, 1994) and HT29 cells (Chou and Omary, 1993) was localized to the NH₂-terminal 125 amino acids after digestion of ³²PO₄-labeled K18 with HBr/HCl at tryptophan (trp) residues. As shown in Fig. 2, the NH₂-terminal 125-amino acid domain of K18 contains 20 serine potential phosphorylation sites. The phosphorylation in Sf9 cells of K18 constructs encompassing mutations of the first 15 residues are shown in Fig. 3 A. Constructs b–g contained point mutations of the sequentially numbered serines shown in Fig. 2, and constructs h and i contained scattered point mutations. Immunoprecipitation of K8/18 from in vivo ³²PO₄-labeled Sf9 cells expressing the various constructs showed that constructs g and i had minimal phosphorylation of K18 as compared with the other constructs (Fig. 3, radiograph), despite having equal levels of expressed protein (Fig. 3 A, Coomassie stain).

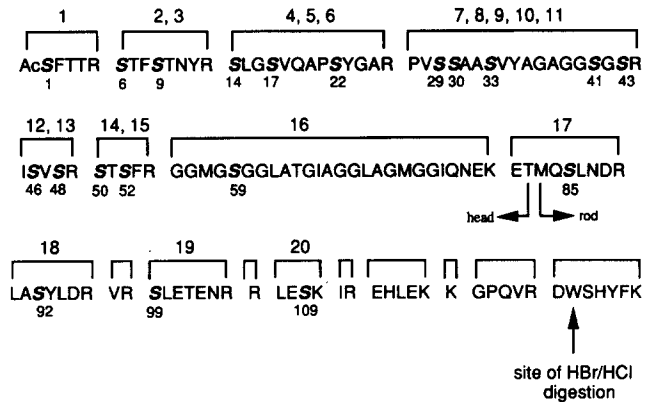


Figure 2. Amino acid sequence and tryptic peptides of K18 head and proximal rod domains. Single letter abbreviations are used to show the amino acid sequence of human K18 beginning with the acetylated serine. Horizontal brackets enclose predicted trypsin digestion products. Serine residues are shown in bold italics and are numbered consecutively above the brackets, with numbers below indicating amino acid position. The beginning of the rod domain and end of the head domain are also shown.

The tryptic phosphopeptide map of K18 constructs (Fig. 3 B) showed that the major phosphopeptide indicated by an arrow in a is seen in all the constructs except g and i. By using the constructs that contain the major phosphopeptide to eliminate potential sites, it can be inferred that the 15th serine (i.e., ser-52 in Fig. 2) is the likely major site of K18 phosphorylation. This was confirmed by constructing individual ser-50 and ser-52 point mutations which are contained within the same tryptic peptide (Fig. 4). Of note, the ser-50 point mutation decreased the overall phosphorylation of K18 nearly fourfold whereas the ser-52 point mutation

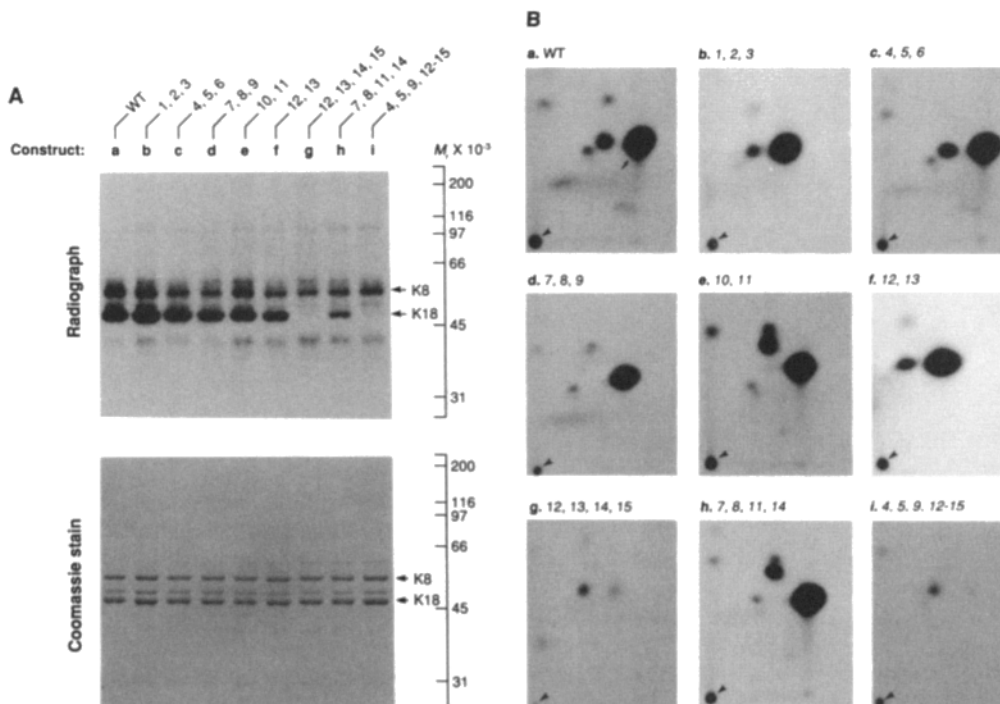


Figure 3. Characterization of the phosphorylation of K18 serine mutants expressed in Sf9 cells. (A) Sf9 cells were infected with recombinant WT K8/18 or a recombinant WT K8/mutant K18 baculovirus for four days, then labeled with ³²PO₄ for 3 h. The keratins from each construct were then immunoprecipitated using anti-K8/18 MAb and analyzed by SDS-PAGE. (B) Individual phosphate labeled K18 bands were isolated as in Fig. 1 then analyzed by tryptic peptide mapping.

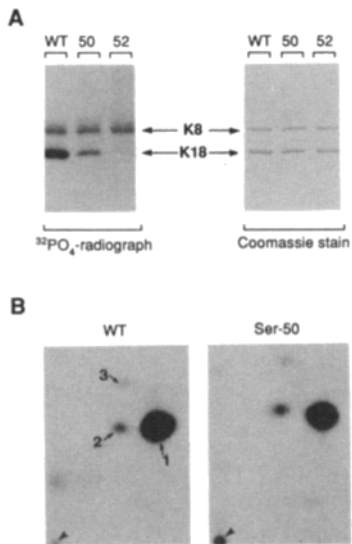


Figure 4. Ser-52 is the major phosphorylation site of K18. Baculovirus-K18 constructs that contain wild-type K18, or individual ser-50→ala or ser-52→ala mutants (which correspond to the consecutively numbered serine 14 and 15 in Fig. 2) were generated and used with WT K8 to coinfect Sf9 cells for 4 d. Cells were then labeled with $^{32}\text{PO}_4$ followed by solubilization and immunoprecipitation of K8/K18 (A) or analysis of K18 from each of the constructs by tryptic peptide mapping (B).

resulted in essentially total abolishment of K18 phosphorylation (Fig. 4). Abolishing most of the phosphorylation of K18 via the ser-52→ala mutation did not affect the phosphorylation level of K8 (Fig. 4 A) or the peptide map pattern of K8 (not shown).

In order to differentiate between partial phosphorylation at ser-50 versus a ser-50→ala induced conformational change that decreases the efficiency of phosphorylation at ser-52, we performed manual Edman degradation of K18 tryptic phosphopeptides. As shown in Fig. 5, Edman degradation of K18 tryptic phosphopeptides, which contained the peptide $^{30}\text{STSFR}$ as the primary phosphopeptide, resulted in release of phosphate after the third cycle. Therefore, ser-52, being the third residue of the $^{30}\text{STSFR}$ tryptic peptide, is the major phosphorylation site of K18. The presence of a single phosphorylation site in the peptide $^{30}\text{STSFR}$ was also supported by finding that WT K18 and the ser-50 mutants have identical pI and an identical migration of the $^{32}\text{PO}_4$ -labeled isoelectric forms (not shown).

We also compared the glycosylation of wild type K18, ser-50→ala and ser-52→ala K18 mutants and found that all the constructs had similar glycosylation levels in K8 and K18 when expressed in Sf9 cells, as determined by in vitro galactosylation (not shown). In addition, the tryptic glycopeptide pattern of the three K18 constructs was also very similar and no effect of the mutations on the tryptic glycopeptide pattern of coexpressed wild-type K8 was noted (not shown).

Potential Kinases Involved in K18 ser-52 Phosphorylation

The sequence containing ser-52 is part of a consensus sequence RXXSXR (see Fig. 2) for PKC, and RXXS for S6 and CAM kinases (Pearson and Kemp, 1991). We tested the

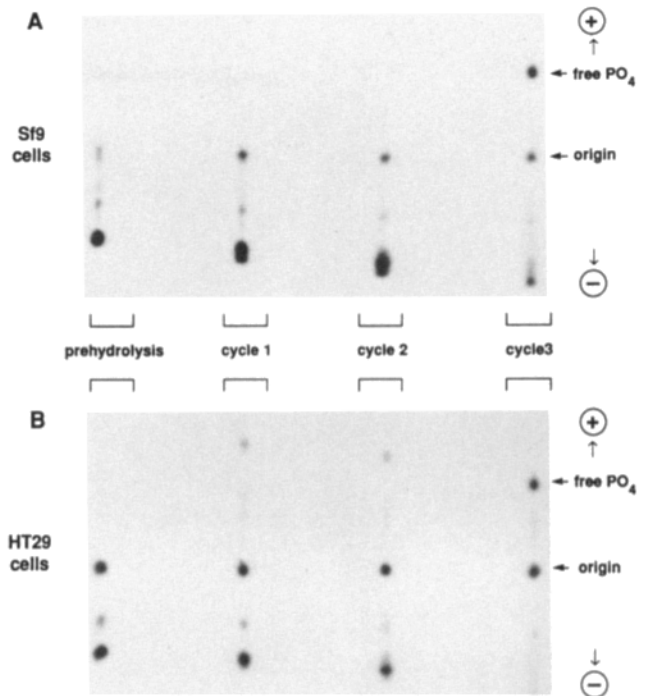


Figure 5. Edman degradation of $^{32}\text{PO}_4$ -labeled K18 isolated from Sf9 and HT29 cells. HT29 and Sf9 cells were labeled with $^{32}\text{PO}_4$ for 5 h followed by isolation of the labeled K18 after immunoprecipitation and SDS-PAGE. After trypsinization, labeled peptides were subjected to three cycles of manual Edman degradation. A fraction (1/10) of the starting material and of each cycle product was subjected to electrophoresis. The position of free labeled phosphate and origin of samples are indicated.

in vitro phosphorylation of K18 (immunoprecipitated from HT29 cells) using purified CAM and S6 kinases, PKC α and PKC ϵ . As shown in Fig. 6 a, K18 was phosphorylated by all the tested kinases except PKC α . As a control, phosphorylation of MBP by the different kinases showed that while PKC α did not efficiently phosphorylate K18, it did phosphorylate MBP (Fig. 6 b). Analysis of the tryptic phosphopeptides of K18 labeled in vitro by the indicated kinases (Fig. 6, e-g) showed a very similar pattern to the in vivo phosphorylation shown in Fig. 1. Identity of peptides 1-3 shown in Fig. 6, e-g to peptides 1-3 shown in Fig. 1 was confirmed by analysis of peptide maps obtained after mixing K18 isolated from in vivo phosphate-labeled HT29 cells with K18 labeled in vitro by each of the kinases (not shown). This indicates that CAM and S6 kinases as well as PKC ϵ are able to in vitro phosphorylate the ser-52 containing peptide of K18.

Expression of Wild-type and ser-52→ala K18 in Mammalian and Insect Cells and Analysis of Keratin Filament Assembly and Reorganization

We examined the effect of the ser-52→ala mutation of K18 on filament assembly in a number of expression cell systems using immunofluorescence. As shown in Fig. 7, mutant and wild-type K18 manifested similar assembly patterns in Sf9 cells, and in three mammalian cell lines containing endogenous vimentin (mouse NIH 3T3 and human SW13) or mouse K8/18 (NMuLi). Similar assembly patterns were also

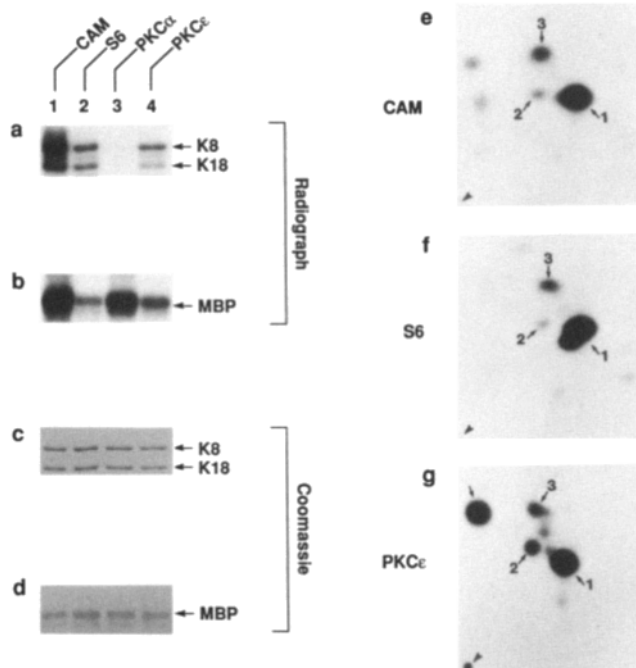


Figure 6. Phosphorylation of K18 by CAM and S6 kinases and PKC ϵ . (a-d) An in vitro kinase assay, with the indicated kinases, was carried out using as a substrate MBP or four equivalent immunoprecipitates of K8/18 isolated from HT29 cells as described in Materials and Methods. The radiograph was obtained by exposure of the Coomassie blue panel shown. (e-g) K18 was purified using preparative SDS-PAGE from K8/18 immunoprecipitates labeled in vitro with CAM or S6 kinases, or PKC ϵ . After electroelution of the individual K18 bands, tryptic peptide mapping was carried out as described in Materials and Methods. Arrowheads indicate origin where samples were spotted. Unlabeled arrow in g shows a labeled peptide that is only weakly seen after in vivo labeling (Fig. 1).

noted when wild-type K18 and the ser-52 mutant were expressed in SW13 cells that lack vimentin (not shown). We were unable to analyze in vitro assembly (using negative staining and electron microscopy) of K8/18 purified from the Sf9 cell expression system, due to lack of filament formation of the wild-type proteins despite normal filament formation of K8/18 isolated in a similar manner from HT29 cells (not shown). Lack of in vitro filament assembly of Sf9 produced K8/18 could be related to interfering species that may copurify with the individual keratins or to the altered phosphorylation ratio of K8/K18 in insect cells as compared with mammalian cells (Ku and Omary, 1994).

We also studied the effect of the ser-52 K18 mutation on K8/18 filament reorganization in tissue culture cells. This is based on in vivo and in vitro evidence indicating that phosphorylation of IF is likely to play a role in filament reorganization (reviewed by Eriksson et al., 1992a). This was done in two ways. First we induced a hyperphosphorylated state in K8/18 transfected cells by short-term treatment with okadaic acid, a phosphatase type 1 and 2A inhibitor (Bialojan and Takai, 1988), which results in reorganization of IF (Eriksson et al., 1992b; Sacher et al., 1992; Lee et al., 1992) including keratins (Yatsunami et al., 1993) in a number of

cell types examined. As shown in Fig. 8, okadaic acid treatment of wild-type K8/18 transfected into NIH-3T3 cells (and SW13 cells, not shown) resulted in rearrangement of the transfected filament network into small and large aggregate dots, or dots and short filaments (a and c). In contrast, treatment of ser-52 \rightarrow ala K18/WT K8-transfected cells with okadaic acid resulted in a less filament-destructive phenotype manifested by many cells showing normal appearing filaments and some cells showing fine dots (Fig. 8, e and g). Longer treatment with okadaic acid (>1 h) resulted in complete rearrangement of K8/18 filaments in WT and ser-52 \rightarrow ala transfectants (not shown). A second approach that we utilized was to arrest WT K18 and K18 ser-52 \rightarrow ala transfected SW13 cells at the G2/M stage of the cell cycle with colcemid, then examine the extent of filament rearrangement. As shown in Fig. 8 (b, d, f, and h), a similar pattern to that seen with okadaic acid was observed in that the ser-52 K18 mutant did not rearrange as well as the WT K18 transfectant. Quantitation of the cells containing disrupted filaments from a representative experiment showed that okadaic acid treated cells had 47 and 27% of the cells with disrupted filaments (for WT and ser-52 mutant, respectively) and colcemid G2/M arrested cells had 63 and 35% of the cells with disrupted filaments (for WT and ser-52 mutant, respectively). Although there was some variability in the percent of cells with rearranged filaments between experiments, the ratio of percent filament rearrangement in WT versus ser-52 mutant K18 transfectants was always reproducible (1.96 ± 0.14 , [$n = 4$], and 2.15 ± 0.78 [$n = 4$] for colcemid and okadaic acid treated cells, respectively). This near twofold effect was also confirmed when WT and ser-52 \rightarrow ala K18 transfectants (okadaic acid or colcemid treated) were analyzed in a double-blinded manner (not shown). We did not analyze G2/M arrested NIH-3T3-transfected cells since their filaments were not disrupted after colcemid treatment (not shown).

Phosphorylation of Wild-type and ser-52 \rightarrow ala K18 Expressed in NIH-3T3 Cells

The ser-52 \rightarrow ala mutation of K18, expressed in Sf9 cells, resulted in near total abolishment of K18 phosphorylation (Fig. 4), which predicts that a similar pattern should occur if the K18 mutant is expressed in mammalian cells. This prediction was tested and as shown in Fig. 9, WT K8/18 were phosphorylated in the expected pattern (i.e., K8 > K18 32 P $_i$ -labeling intensity) after expression in NIH-3T3 cells (lane a), but the phosphorylation of the ser-52 \rightarrow ala K18 mutant was barely detectable (lane b). This indicates that mutation of the major phosphorylation site of K18 in mammalian cells abolishes most of K18 in vivo phosphorylation, and supports our biochemical and molecular characterization. Analysis of the phosphorylation of WT K8/18 in the same transfected cells treated with okadaic acid showed that K8 and K18 become hyperphosphorylated with K18 having nearly similar phosphorylation levels to K8 (lane c). A similar preferential hyperphosphorylation of K18 was also noted in HT29 cells treated with okadaic acid (not shown). In contrast, okadaic acid treated cells transfected with ser-52 \rightarrow ala K18 showed that K8 became relatively more phosphorylated than K18 (lane d), indicating that the ser-52 mutation prevented some phosphorylation of K18 but that other sites also become phosphorylated. Similar results were

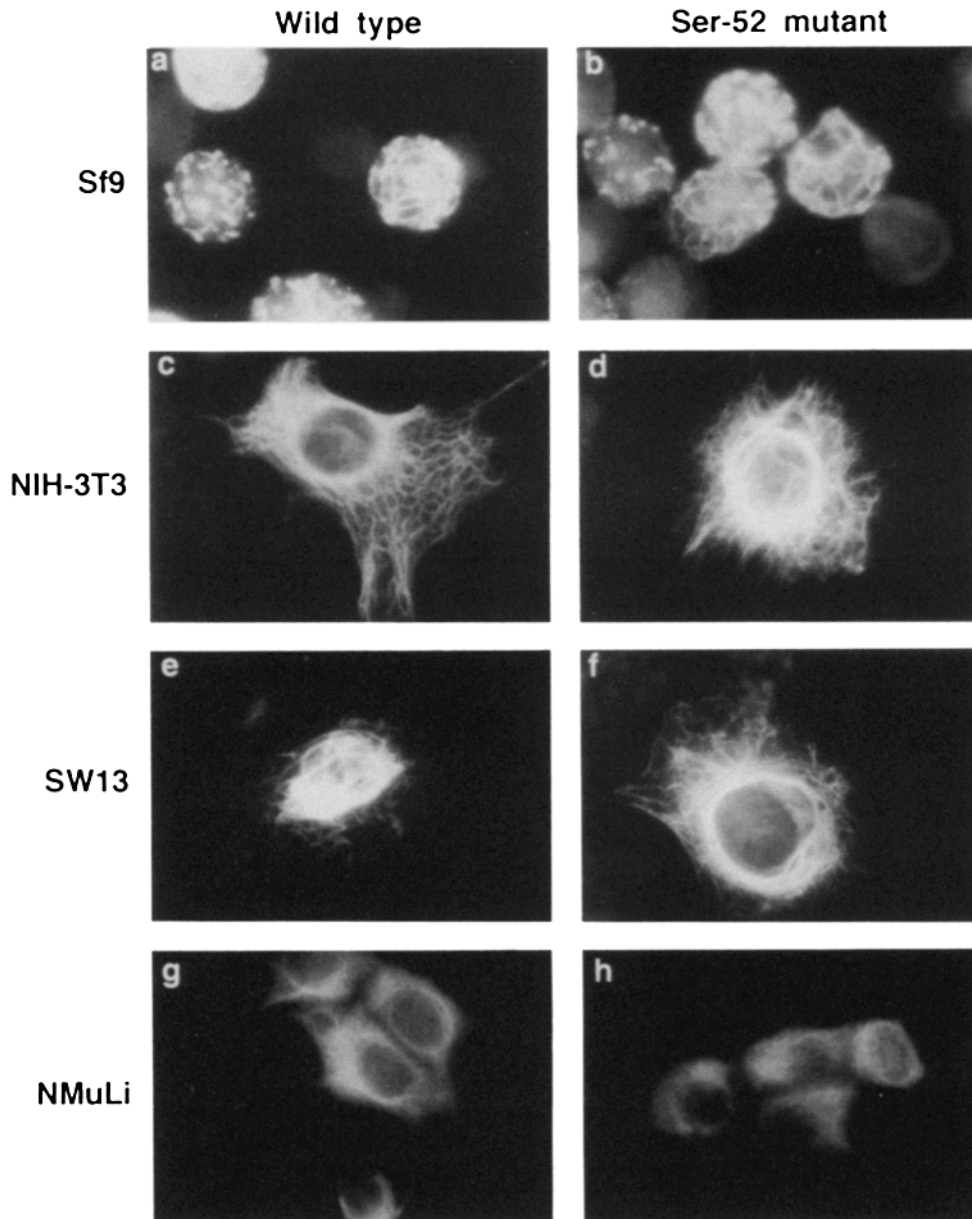


Figure 7. Immunofluorescence of transfected wild-type and ser-52→ala K18 expressed in mammalian and insect cells. Sf9 cells were infected with recombinant K8 and K18 (WT or ser-52→ala mutants) baculovirus followed by analysis of filament formation after 2 d of infection. Alternatively, NIH-3T3, SW13, or NMuLi cells were transiently cotransfected with WT K8 and WT or ser-52 K18. After 3 d, cells were fixed and analyzed by immunofluorescence using anti-K8/18 MAb as described in Materials and Methods. Immunofluorescence of stably transfected cells also showed a similar staining pattern (not shown).

also obtained in SW13, stably transfected with WT K8 and WT or ser-52→ala K18, in the presence or absence of okadaic acid (not shown).

Discussion

Ser-52 Is the Major Physiologic Phosphorylation Site of K18 in Interphase Cells

The phosphorylation of human K18 appears to be highly conserved in that similar peptides are phosphorylated when analyzed in an insect cell expression system, human colonic tissue cultured or normal cells. For example, the phosphorylated peptides of K18 in normal intestine are nearly identical to those in human colonic tissue culture cells, with one predominant radiolabeled peptide (Fig. 1). This extends our recent findings showing that phosphorylation of K8 and K18 in HT29 cells and Sf9 insect cells is also similar (Ku

and Omary, 1994), and indicates that the phosphorylation of K8/18 expressed in Sf9 cells is physiologically relevant in terms of the modified peptides. The baculovirus-Sf9 K8/18 expression system allowed us to generate a panel of K18 constructs in large quantities that permitted biochemical studies. The generated K18 constructs contained multiple serial mutations at potential phosphorylation sites that allowed identification of the ³⁰S³⁵SFR tryptic peptide as the major phosphopeptide of K18 (Fig. 3). The precise location of the phosphorylation site was verified using Edman degradation of tryptic peptides of ³²P_o-labeled K18 (Fig. 5) and by generating specific point mutations (Fig. 4). In addition, the ser-52 K18 mutant expressed in mammalian cells was essentially not phosphorylated when compared to the wild-type expressed protein (Fig. 9). These data support the conclusion that ser-52 is the major physiologic phosphorylation site of K18 in interphase cells.

It is possible that the ser-52 mutation, which abolished

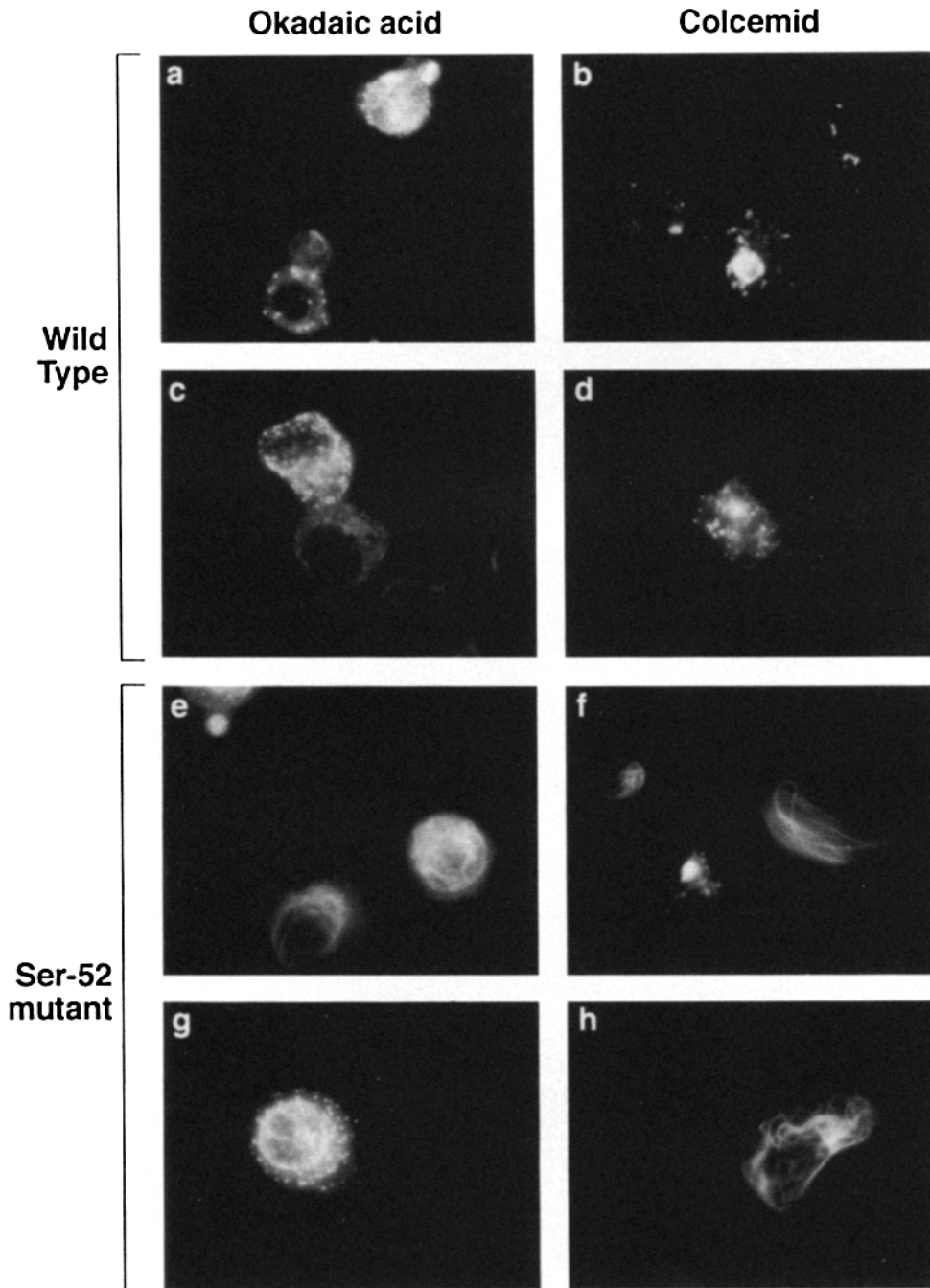


Figure 8. Immunofluorescence analysis of K8/18 filament reorganization in cells treated with colcemid or okadaic acid. Stable transfected NIH-3T3 cells were treated with colcemid or okadaic acid (1 $\mu\text{g/ml}$) for 45 min, and transfected SW13 cells were treated with colcemid 0.5 $\mu\text{g/ml}$ for 36 h. Floater cells and cells detached simply by rinsing were pooled and transferred to slides using a Cytospin then stained with anti-K8/18 MAb as described in Materials and Methods. Cell viability was 95–100% (okadaic-treated cells) and 50–60% (colcemid-treated cells). For colcemid treatment, the percent of analyzed cells that were in G2/M were 75 and 74% for WT K18 and ser52 \rightarrow ala K18 transfectants, respectively (not shown). Less than 5% of the okadaic-treated cells and \sim 50% of the colcemid-treated cells remained adhered in the dish.

most of K18 phosphorylation, could have caused a conformational change that resulted in masking another presumed major phosphorylation site. Such a scenario is unlikely for several reasons. First, biochemical data based on cleavage at trp-125 (Fig. 2) showed that most of K18 phosphorylation is within the NH_2 -terminal 125-amino acid domain which contains 20 serines (Chou and Omary, 1993). As a complement to the analysis of the first 15 serines shown in Fig. 3, analysis of ser \rightarrow ala mutations of the five remaining serines showed a similar phosphorylation level to wild-type K18 (not shown). Second, preliminary mass spectrometry data of a tryptic digest of purified K18 yielded a prominent mass spectral peak that corresponded to the mass of a single phosphate plus the $^{50}\text{STSFR}$ peptide (not shown). Third, a

significant conformational change by the ser-52 \rightarrow ala mutation is unlikely, at least to the extent that it did not appreciably alter filament assembly (Fig. 7). Along the same line, the 75% reduction in K18 phosphorylation in the ser-50 \rightarrow ala mutant is likely related to a decrease in the overall phosphorylation of K18 because of the nearby location of ser-50 and ser-52. Of note, the ser-50 \rightarrow ala K18 mutant showed normal assembly, as determined by immunofluorescence staining, after transfection into NIH-3T3 cells (not shown).

The $^{49}\text{RSTSF}$ R sequence of human K18 appears to be unique in terms of being absent from other keratin head-domain sequences that we have examined from sequence data banks. It is also not present in Endo B, the mouse kera-

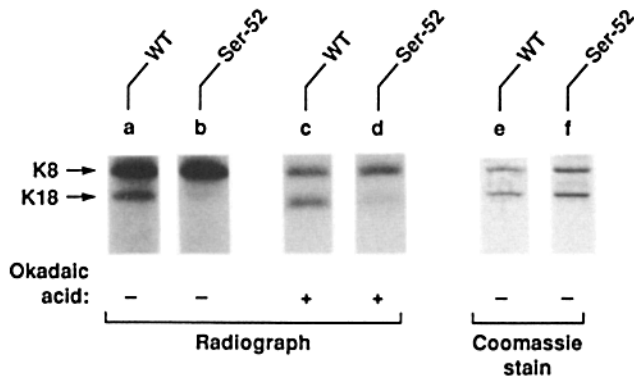


Figure 9. Phosphorylation of K8/18 in NIH-3T3 cells expressing WT or ser-52→ala K18 mutant in the presence or absence of okadaic acid. Duplicate dishes of NIH-3T3 stable transfectant cells, expressing WT K8 and WT or ser-52→ala K18, were incubated with 10 mM sodium butyrate for 16 h to enhance keratin expression then labeled with $^{32}\text{PO}_4$ for 4 h (250 $\mu\text{Ci/ml}$). During the last 45 min of labeling, okadaic acid was added to one of the duplicate dishes followed by immunoprecipitation and SDS-PAGE analysis. Exposure was for 40 h (lanes a and b) and 2 h (lanes c and d). Nearly equivalent K8/18 portions were loaded from the wild-type and mutant immunoprecipitates.

tin which has 89.7% amino acid sequence identity with human K18 (Oshima et al., 1986). It remains to be determined if ser-51 in the sequence $^{50}\text{RSVWGG}$ of mouse Endo B is functionally equivalent to ser-52 in human K18.

Relationship between Glycosylation and Phosphorylation of K18

A potential functionally relevant feature of K8 and K18 glycosylation and phosphorylation is that the K8 and K18 molecules that are phosphorylated are not glycosylated and vice versa. This is based on metabolic labeling of HT29 cells with $^3\text{H-GlcNH}_2$ or $^{32}\text{PO}_4$ followed by isoelectric focusing, which showed that the labeled phospho- and glyco-K18 isoforms do not overlap (Chou and Omary, 1993). The mutual exclusiveness of each modification has been reported for other phosphoproteins that have the single O-GlcNAc type of modification including RNA polymerase II (Kelly et al., 1993) and peptide chain initiation factor 2-associated p67 (Datta et al., 1989). This raises the possibility that one modification may block the other or that each modification has separate functional role(s). In the case of K18, abolishing the major phosphorylation site had no significant effect on K18 glycosylation, which supports the hypothesis that these modifications have different functional roles.

Potential Kinases Involved in K18 Phosphorylation

The consensus sequence RXXSXR for PKC, S6, and CAM kinases corresponds to the sequence $^{49}\text{RSTSFR}$ containing ser-52 of K18. Our *in vitro* phosphorylation data showed that the ser-52 containing peptide was a major phosphopeptide that was phosphorylated by all three kinases (Fig. 6). *In vivo* phosphorylation of K8/18 in HT29 cells was previously shown to be calcium independent, based on unaltered K8/18 phosphorylation in the presence of ionomycin and BAPTA/AM which led to an elevation and decrease in intracellular calcium levels, respectively (Chou and Omary, 1991). This

suggests that CAM kinases are less likely to be involved in K18 phosphorylation in interphase cells.

Although our data suggest that PKC ϵ and/or S6 kinase may phosphorylate K18 *in vivo*, other kinases could certainly be involved. For example, cAMP-dependent protein kinase, which was not examined in this study, may be involved since rat K8 and K18 can act as *in vitro* substrates for this kinase (Yano et al., 1991). However, 8-Br-cAMP had little effect on K8 and K18 phosphorylation in HT29 cells (Chou and Omary, 1991).

Several criteria support a potential role for a calcium-independent PKC such as PKC ϵ in K8/18 phosphorylation (Omary et al., 1992): (a) the lack of phosphorylation of K18 by the calcium-dependent PKC α (Fig. 8), (b) the association of a PKC ϵ related kinase with K8 and K18 as determined using biochemical means and double immunofluorescence labeling, (c) the decrease of basal K18 phosphorylation by introducing a pseudosubstrate of PKC ϵ to intact cells by scratch loading, and (d) inhibition of *in vitro* phosphorylation of K8/18 immunoprecipitates by the associated kinase activity in the presence of PKC ϵ pseudosubstrate. In addition, 23 of 37 identified PKC phosphorylation sites contained a hydrophobic residue in the +1 position of a phosphorylated serine (e.g., phe-53 of K18, Pearson and Kemp, 1991). Furthermore, the presence of two basic residues, particularly arginine, in the -3 and +2 positions is highly favorable for phosphorylation by PKC (e.g., arg-49 and 54 of K18, Kennelly and Krebs, 1991). Similar *in vitro* phosphorylation of rat liver K8/18 was obtained using PKC and CAM kinases (Yano et al., 1991).

Functions to Consider for ser-52 Phosphorylation

Several potential functions for IF phosphorylation can be considered, including the regulation of IF assembly, disassembly, and dynamic rearrangements, interaction with other IF-associated proteins, glycosylation, and signal transduction. Of these potential functions, the role of phosphorylation in IF disassembly and reorganization is the best studied. For example, *in vitro* phosphorylation of vimentin (Inagaki et al., 1987), desmin (Inagaki et al., 1988), K8/18 (Yano et al., 1991), NF (Gonda et al., 1990), α -internexin (Tanaka et al., 1993), and nuclear lamins (Peter et al., 1991) resulted in IF disassembly, and microinjection of cAMP-dependent protein kinase into BHK cells (Lamb et al., 1989) caused rearrangement of the studied IF. Also, mitotic arrest of BHK cells caused hyperphosphorylation of vimentin and desmin in association with IF disassembly (Chou et al., 1989), and mitotic arrest of HT29 cells resulted in a similar change in K8/18 (Chou and Omary, 1993). Interestingly, phosphorylation of the studied IF proteins occurs in the head, tail, or head/tail domains as shown for vimentin and desmin (Evans, 1988), K1 (Steinert, 1988), NF (Julien and Mushynski, 1983; Nixon and Sihag, 1991), and K18 (Chou and Omary, 1993). These are the domains that appear to be important in IF assembly and dynamics (reviewed by Coulombe, 1993; Stewart, 1993; Heins and Aebi, 1994).

Our results showed that mutation of the major phosphorylation site of K18 did not have an apparent role on filament assembly (Fig. 7) but did have a role on filament rearrangement that occurs in association with mitotic arrest or the induction of a hyperphosphorylated state in cells by okadaic

acid. The effect that we observed on disassembly was incomplete in that in the case of colcemid arrested cells for example, ~60% of the WT K18 transfected cells rearranged versus 30% in ser-52→ala K18 transfectants. Such an incomplete effect is not surprising, since phosphorylation of the K18 partner (i.e., K8) may be complementary or even dominant in having a disassembly/rearrangement role. Our working hypothesis is that phosphorylation at multiple sites that potentially involve both keratins will be important. Also, a simple on/off phosphorylation at a single site of a heteropolymeric protein pair may not necessarily occur, since multiple sites and multiple potential rearrangements with different functional consequences are likely to occur. For example, the double mutation at ser-22 and ser-392 of lamin A resulted in 56–73% of cells being unable to disassemble their nuclear lamina, whereas mutation of the ser-22 alone resulted in only 35% of the cells showing the mutant phenotype (Heald and McKeon, 1990). The only other study of the in vivo effect of altering phosphorylation sites on filament assembly and reorganization that we are aware of was done for ser-55 in vimentin, which is a site phosphorylated by p34^{cdc2} (Carpenter et al., 1992). In that study, a ser-55→ala mutation of vimentin resulted in normal assembly after transfection into SW13 cells lacking vimentin, but disassembly of the mutant protein did not occur during mitosis. In the case of K18, phosphorylation of the peptide containing ser-52 increases during mitotic arrest, but hyper- and neophosphorylation of four additional peptides also occurs (Chou and Omary, 1993). Edman degradation of the ³²PO₄-labeled ser-52 containing peptide (³⁰STSFR) isolated from G2/M arrested cells showed that ser-52 is the only phosphorylated serine in that peptide (not shown).

Our identification of ser-52 as the major phosphorylation site of K18 in interphase cells, and its potential role in filament disassembly/rearrangement, offers an impetus and a model system for further characterization of the role of this and additional modification sites on filament rearrangement or interaction with other cellular elements. For example, phosphorylation of IF may play a role in their interaction with pectin (Foisner et al., 1991) or other associated proteins, in hepatocyte response to epidermal growth factor (Baribault et al., 1989), or in islet cell insulin secretion (Schubert and Fields, 1984). As additional modification sites become characterized and with the availability of different modification mutants, a full picture should emerge in terms of the roles of K8/18 phosphorylation and glycosylation in filament dynamics.

We are grateful to Robert Oshima and Jerome Strauss for supplying K18 and K8 cDNA, respectively; Robert Evans for providing us with the SW13 cells; Howard Schulman, James L. Maller, and Berta Strulovici for their generous gift of CAM kinase, S6 kinase, and PKC α/ϵ , respectively. We also thank Pierre Coulombe for stimulating discussions and his critical reading of the manuscript, and Linda Jacob for preparing the manuscript.

This work was supported by a Veterans Administration Merit Award, National Institute on Alcohol Abuse and Alcoholism grant AA0947A-01, the PEW Scholars Program, and Digestive Disease Center grant DK38707.

Received for publication 6 April 1994 and in revised form 29 June 1994.

References

Achtstaetter, T., M. Hatzfeld, R. A. Quinlan, D. C. Parmelee, and W. W. Franke. 1986. Separation of cytokeratin polypeptides by gel electrophoretic

- and chromatographic techniques and their identification by immunoblotting. *Methods Enzymol.* 134:355–371.
- Baribault, H., R. Blouin, L. Bourgon, and N. Marceau. 1989. Epidermal growth factor-induced selective phosphorylation of cultured rat hepatocyte 55-kD cytokeratin before filament reorganization and DNA synthesis. *J. Cell Biol.* 109:1665–1676.
- Baribault, H., J. Price, K. Miyai, and R. G. Oshima. 1993. Mid-gestational lethality in mice lacking keratin 8. *Genes & Develop.* 7:1191–1202.
- Bialojan, C., and A. Takai. 1988. Inhibitory effect of a murine-sponge toxin, okadaic acid, on protein phosphatases: specificity and kinetics. *Biochem. J.* 256:283–290.
- Boyle, W. J., P. Van Der Geer, and T. Hunter. 1991. Phosphopeptide mapping and phosphoamino acid analysis by two-dimensional separation on thin layer cellulose plates. *Methods Enzymol.* 201:110–149.
- Carpenter, D., Y. Capetanaki, S. Khan, and W. Ip. 1992. Phosphorylation-induced disassembly of intermediate filaments (IFs) is not required for progression through mitosis. *Molec. Biol. Cell.* 3:350a.
- Celis, J. E., P. M. Larsen, S. J. Fey, and A. Celis. 1983. Phosphorylation of keratin and vimentin polypeptides in normal and transformed mitotic human epithelial amnion cells: behavior of keratin and vimentin filaments during mitosis. *J. Cell Biol.* 97:1429–1434.
- Chou, C.-F., and M. B. Omary. 1991. Phorbol acetate enhances the phosphorylation of cytokeratins 8 and 18 in human colonic epithelial cells. *FEBS (Fed. Eur. Biol. Soc.) Lett.* 282:200–204.
- Chou, C.-F., and M. B. Omary. 1993. Mitotic-arrest associated enhancement of O-linked glycosylation and phosphorylation of human keratins 8 and 18. *J. Biol. Chem.* 268:4465–4472.
- Chou, C.-F., C. L. Riopel, L. S. Rott, and M. B. Omary. 1993. A significant soluble keratin fraction in "simple" epithelial cells: lack of an apparent phosphorylation and glycosylation role in keratin solubility. *J. Cell Sci.* 105:433–445.
- Chou, C.-F., A. J. Smith, and M. B. Omary. 1992. Characterization and dynamics of O-linked glycosylation of human cytokeratin 8 and 18. *J. Biol. Chem.* 267:3901–3906.
- Chou, Y.-H., E. Rosevear, and R. D. Goldman. 1989. Phosphorylation and disassembly of intermediate filaments in mitotic cells. *Proc. Natl. Acad. Sci.* 86:1885–1889.
- Compton, J. 1994. Epidermal disease: faulty keratin filaments take their toll. *Nature Genet.* 6:6–7.
- Coté, F., J.-F. Collard, and J.-P. Julien. 1993. Progressive neuronopathy in transgenic mice expressing the human neurofilament heavy gene: a mouse model of amyotrophic lateral sclerosis. *Cell.* 73:35–46.
- Coulombe, P. A. 1993. The cellular and molecular biology of keratins: beginning a new era. *Curr. Opin. Cell Biol.* 5:17–29.
- Coulombe, P. A., M. E. Hutton, R. Vassar, and E. Fuchs. 1991. A function for keratins and a common thread among different types of epidermolysis bullosa simplex diseases. *J. Cell Biol.* 115:1661–1674.
- Datta, B., M. K. Ray, D. Chakrabarti, D. E. Wylie, and N. K. Gupta. 1989. Glycosylation of eukaryotic peptide chain initiation factor 2 (eIF-2-associated 67-kDa polypeptide (p⁶⁷) and its possible role in the inhibition of eIF-2 kinase-catalyzed phosphorylation of the eIF-2 α -subunit. *J. Biol. Chem.* 264:20620–20624.
- Deng, W. P., and J. A. Nickoloff. 1992. Site-directed mutagenesis of virtually any plasmid by eliminating a unique site. *Anal. Biochem.* 200:81–86.
- Eriksson, E., J. L. Maller, and R. L. Erikson. 1991. *Xenopus* ribosomal protein S6 kinase II. *Methods Enzymol.* 200:252–268.
- Eriksson, J. E., D. L. Brautigan, R. Vallee, J. Olmstead, H. Fujiki, and R. D. Goldman. 1992b. Cytoskeletal integrity in interphase cells requires protein phosphatase activity. *Proc. Natl. Acad. Sci. USA.* 89:11093–11097.
- Eriksson, J. E., P. Opal, and R. D. Goldman. 1992a. Intermediate filament dynamics. *Curr. Opin. Cell Biol.* 4:99–104.
- Evans, R. M. 1988. The intermediate filament proteins vimentin and desmin are phosphorylated in specific domains. *Eur. J. Cell Biol.* 46:152–160.
- Eyer, J., and A. Peterson. 1994. Neurofilament-deficient axons and perikaryal aggregates in viable transgenic mice expressing a neurofilament- β -galactosidase fusion protein. *Neuron.* 12:389–405.
- Foisner, R., P. Traub, and G. Wiche. 1991. Protein kinase A- and protein kinase C-regulated interaction of plectin with lamin B and vimentin. *Proc. Natl. Acad. Sci. USA.* 88:3812–3816.
- Fuchs, E., and P. A. Coulombe. 1992. Of mice and men: genetic skin diseases of keratin. *Cell.* 69:899–902.
- Gonda, Y., K. Nishizawa, S. Ando, S. Kitamura, Y. Minoura, Y. Nishi, and M. Inagaki. 1990. Involvement of protein kinase C in the regulation of assembly-disassembly of neurofilaments *in vitro*. *Biochem. Biophys. Res. Comm.* 167:1316–1325.
- Gorman, C. M., B. H. Howard, and R. Reeves. 1983. Expression of recombinant plasmids in mammalian cells is enhanced by sodium butyrate. *Nucleic Acids Res.* 11:7631–7648.
- Hanson, P. I., and H. Schulman. 1982. Inhibitory autophosphorylation of multifunctional Ca²⁺/Calmodulin-dependent protein kinase analyzed by site-directed mutagenesis. *J. Biol. Chem.* 267:17216–17224.
- Heald, R., and F. McKeon. 1990. Mutations of phosphorylation sites in lamin A that prevent nuclear lamina disassembly in mitosis. *Cell.* 61:579–589.
- Heins, S., and U. Aebi. 1994. Making heads and tails of intermediate filament assembly, dynamics and networks. *Curr. Opin. Cell Biol.* 6:25–33.

- Inagaki, M., Y. Gonda, M. Matsuyama, K. Nishizawa, Y. Nishi, and C. Sato. 1988. Intermediate filament reconstitution *in vitro*. *J. Biol. Chem.* 263: 5970-5978.
- Inagaki, M., Y. Nishi, K. Nishizawa, M. Matsuyama, and C. Sato. 1987. Site-specific phosphorylation induces disassembly of vimentin filaments *in vitro*. *Nature (Lond.)* 328:649-652.
- Julien, J. P., and W. E. Mushynski. 1983. The distribution of phosphorylation sites among identified proteolytic fragments of mammalian neurofilaments. *J. Biol. Chem.* 258:4019-4025.
- Kelly, W. G., M. E. Dahmus, and G. W. Hart. 1993. RNA polymerase II is a glycoprotein: modification of the COOH-terminal domain by O-GlcNAc. *J. Biol. Chem.* 268:10416-10424.
- Kennelly, P. J., and E. G. Krebs. 1991. Consensus sequences as substrate specificity determinants for protein kinases and protein phosphatases. *J. Biol. Chem.* 266:15555-15558.
- Klymkowsky, M. W., J. B. Bachant, and A. Domingo. 1989. Functions of intermediate filaments. *Cell Motil. Cytoskeleton.* 14:309-331.
- Klymkowsky, M. W., L. A. Maynell, and C. Nislow. 1991. Cytokeratin phosphorylation, cytokeratin filament severing and the solubilization of the maternal mRNA Vgl. *J. Cell Biol.* 114:787-797.
- Klymkowsky, M. W., D. R. Shook, and L. A. Maynell. 1992. Evidence that the deep keratin filament systems of the *Xenopus* embryo act to ensure normal gastrulation. *Proc. Natl. Sci. USA.* 89:8736-8740.
- Ku, N.-O., and M. B. Omary. 1994. Expression, glycosylation and phosphorylation of human keratins 8 and 18 in insect cells. *Exp. Cell Res.* 211:24-35.
- Laemmli, U. K. 1970. Cleavage of structural proteins during the assembly of the head of bacteriophage T4. *Nature (Lond.)* 227:680-685.
- Lamb, N. J. C., A. Fernandez, J. R. Feramisco, and W. J. Welch. 1989. Modulation of vimentin containing intermediate filament distribution and phosphorylation in living fibroblasts by the cAMP-dependent protein kinase. *J. Cell Biol.* 108:2409-2422.
- Lee, W.-C., J.-S. Yu, S.-D. Yang, and Y.-K. Lai. 1992. Reversible hyperphosphorylation and reorganization of vimentin intermediate filaments by okadaic acid in 9L rat brain tumor cells. *J. Cell. Biochem.* 49:378-393.
- Nixon, R. A., and R. K. Sihag. 1991. Neurofilament phosphorylation: a new look at regulation and function. *Trends Neurosci.* 14:501-506.
- Ohara, O., Y. Gahara, T. Miyake, H. Teraoka, and T. Kitamura. 1993. Neurofilament deficiency in quail caused by nonsense mutation in neurofilament-L gene. *J. Cell Biol.* 121:387-395.
- Omary, M. B., G. T. Baxter, C.-F. Chou, C. L. Riopel, W. Y. Lin, and B. Strulovici. 1992. PKC ϵ -related kinase associates with and phosphorylates cytokeratin 8 and 18. *J. Cell Biol.* 117:583-593.
- Oshima, R. G., J. L. Millan, and G. Ceceña. 1986. Comparison of mouse and human keratin 18: a component of intermediate filaments expressed prior to implantation. *Differentiation.* 33:61-68.
- Pearson, R. B., and B. E. Kemp. 1991. Protein kinase phosphorylation site sequences and consensus specificity motifs: tabulations. *Methods Enzymol.* 200:62-81.
- Peter, M., E. Heidinger, M. Häner, U. Aebi, and E. A. Nigg. 1991. Disassembly of *in vitro* formed lamin head-to-tail polymers by CDC2 kinase. *EMBO (Eur. Mol. Biol. Organ.) J.* 10:1535-1544.
- Sacher, M. G., E. S. Athlan, and W. E. Mushynski. 1992. Okadaic acid induces the rapid and reversible disruption of the neurofilament network in rat dorsal root ganglion neurons. *Biochem. Biophys. Res. Comm.* 186:524-530.
- Schubart, U. K., and K. L. Fields. 1984. Identification of a calcium-regulated insulinoma cell phosphoprotein as an islet cell keratin. *J. Cell Biol.* 98:1001-1009.
- Skalli, O., and R. D. Goldman. 1991. Recent insights into the assembly, dynamics, and function of intermediate filament networks. *Cell Motil. Cytoskeleton.* 19:67-79.
- Steinert, P. M. 1988. The dynamic phosphorylation of the human intermediate filament keratin 1 chain. *J. Biol. Chem.* 263:1333-1339.
- Steinert, P. M., and D. R. Roop. 1988. Molecular and cellular biology of intermediate filaments. *Ann. Rev. Biochem.* 57:593-625.
- Stephens, P. E., and M. I. Cockett. 1989. The construction of a highly efficient and versatile set of mammalian expression vectors. *Nucleic Acid Res.* 17:7110.
- Stewart, M. 1993. Intermediate filament structure and assembly. *Curr. Opin. Cell Biol.* 5:3-11.
- Tanaka, J., M. Ogawara, S. Ando, M. Shibata, R. Yatani, M. Kusagawa, and M. Inagaki. 1993. Phosphorylation of a 62 KD porcine α -internexin, a newly identified intermediate filament protein. *Biochem. Biophys. Res. Comm.* 196:115-123.
- Torpey, N., C. C. Wylie, and J. Heasman. 1992. Function of maternal cytokeratin in *Xenopus* development. *Nature (Lond.)* 357:413-415.
- Xu, Z., L. C. Cork, J. W. Griffin, and D. W. Cleveland. 1993. Increased expression of neurofilament subunit NF-L produces morphological alterations that resemble the pathology of human motor neuron disease. *Cell.* 73:23-33.
- Yamamoto, R., L.-C. Kao, C. E. McKnight, and J. F. Strauss III. 1990. Cloning and sequence of cDNA for human placental cytokeratin 8. Regulation of the mRNA in trophoblastic cells by cAMP. *Molec. Endocrinol.* 4:370-374.
- Yano, T., T. Tokui, Y. Nishi, K. Nishizawa, M. Shibata, K. Kikuchi, S. Tsuiki, T. Yamauchi, and M. Inagaki. 1991. Phosphorylation of keratin intermediate filaments by protein kinase C, by calmodulin-dependent protein kinase and by cAMP-dependent protein kinase. *Eur. J. Biochem.* 197:281-290.
- Yatsunami, J., A. Komori, T. Ohta, M. Suganuma, S. H. Yuspa, and H. Fujiki. 1993. Hyperphosphorylation of cytokeratins by okadaic acid class tumor promoters in primary human keratinocytes. *Cancer Res.* 53:992-996.