

Effect of energy density and virginiamycin supplementation in diets on growth performance and digestive function of finishing steers

Juan D. Navarrete¹, Martin F. Montano¹, Constantino Raymundo¹, Jaime Salinas-Chavira², Noemi Torrentera¹, and Richard A. Zinn^{3,*}

* **Corresponding Author:** Richard A. Zinn
Tel: +1-760-356-3068, **Fax:** +1-760-356-3073,
E-mail: razinn@ucdavis.edu

¹ Department of Nutrition and Biotechnology of Ruminants, Instituto de Investigaciones en Ciencias Veterinarias-UABC, Mexicali, Baja California 21100, México

² Department of Animal Nutrition, Facultad de Medicina Veterinaria y Zootecnia, Universidad Autónoma de Tamaulipas, Cd. Victoria, Tamaulipas 87000, México

³ Department of Animal Science, University of California, Davis 95616, USA

Submitted Oct 25, 2016; Revised Dec 20, 2016;
Accepted Mar 6, 2017

Objective: This study was determined the influence of virginiamycin supplementation on growth-performance and characteristics of digestion of cattle with decreasing dietary net energy value of the diet for maintenance (NE_m) from 2.22 to 2.10 Mcal/kg.

Methods: Eighty crossbred beef steers (298.2 ± 6.3 kg) were used in a 152-d performance evaluation consisting of a 28-d adaptation period followed by a 124-d growing-finishing period. During the 124-d period steers were fed either a lesser energy dense (LED, 2.10 Mcal/kg NE_m) or higher energy dense (HED, 2.22 Mcal/kg NE_m) diet. Diets were fed with or without 28 mg/kg (dry matter [DM] basis) virginiamycin in a 2×2 factorial arrangement. Four Holstein steers (170.4 ± 5.6 kg) with cannulas in the rumen (3.8 cm internal diameter) and proximal duodenum were used in 4×4 Latin square experiment to study treatment effects on characteristics of digestion.

Results: Neither diet energy density nor virginiamycin affected average daily gain ($p > 0.10$). As expected, dry matter intake and gain efficiency were greater ($p < 0.01$) for LED- than for HED-fed steers. Virginiamycin did not affect estimated net energy value of the LED diet. Virginiamycin increased estimated NE of the HED diet. During daylight hours when the temperature humidity index averaged 81.3 ± 2.7 , virginiamycin decreased ($p < 0.05$) ruminal temperature. Virginiamycin did not influence ($p > 0.10$) ruminal or total tract digestion. Ruminal ($p = 0.02$) and total tract digestion ($p < 0.01$) of organic matter, and digestible energy ($p < 0.01$) were greater for HED vs LED. Ruminal microbial efficiency was lower ($p < 0.01$) for HED vs LED diets.

Conclusion: The positive effect of virginiamycin on growth performance of cattle is due to increased efficiency of energy utilization, as effects of virginiamycin on characteristics of digestion were not appreciable. Under conditions of high ambient temperature virginiamycin may reduce body temperature.

Keywords: Virginiamycin; Energy Concentration; Feedlot; Cattle; Performance; Digestion

INTRODUCTION

Feedlot cattle industry in the United States uses ionophores as feed additive which act in one or more ways in the animal like improve weight gain, feed efficiency, reduce morbidity, mortality and may act favorably on environment. The action mode of ionophores is well established, they act against gram positive bacteria, improve propionate, reduce acetate, also reduce deamination, methane, risk of bloat and lactic acidosis. As an alternative to ionophores, virginiamycin (VM) is an antimicrobial also effective against growth of gram-positive bacteria, including ruminal lactic acid-producing bacteria, reducing the possibility of lactic acidosis associated digestive dysfunctions. In a summary of 7 dose-response studies with feedlot cattle [1], dietary supplementation with 19 to 27 mg VM/kg did not affect dry matter intake (DMI), but enhanced average daily gain (ADG, 4.6%) and gain efficiency (ADG/DMI, 3.6%), and reduced (38%) the incidence of liver

abscess. In more recent studies involving cross-bred [2] and calf-fed Holstein steers [3,4] VM supplementation likewise enhanced ADG (6.1%) and gain efficiency (7.2%). In these latter studies, it was shown that the improvement in gain efficiency with VM supplementation was largely due to enhanced efficiency of energy utilization, increasing the net energy value of the diet for maintenance (NE_m , 6.6%) and gain (NE_g , 7.9%). The VM supplementation appears to have very little impact on the extent of organic matter (OM) digestion, and the digestible energy value of the diet, per se [3]. The VM decreases ruminal deaminase activity and ruminal degradation of feed protein. Montano et al [2] observed that VM supplementation increased flow of feed N to the small intestine. No research has been reported thus far that evaluates the potential for a differential response to VM supplementation depending on the energy density of the finishing diet. To the extent that the growth enhancement response to VM supplementation is dependent on an amelioration of episodic digestive dysfunctions associated with prolonged feeding of high-grain finishing diets, it follows that the response to VM supplementation might diminish as the grain content of the diet is reduced. The objective of the present study was to examine the differential response to VM supplementation on growth-performance and characteristics of digestion when the grain content of the diet is reduced by 25%, decreasing dietary NE_m from 2.22 to 2.10 Mcal/kg.

MATERIALS AND METHODS

All procedures involving animal care and management were in accordance with and approved by the University of California, Davis, Animal Use and Care Committee.

Trial 1. Growth performance and carcass characteristics of feedlot steers

The magnitude of ionophore antibiotic response can be greatly influenced by energy density of the diet. Eighty crossbred beef steers (298.2±6.3 kg) were used in a 152-d experiment to compare the effects of energy density and VM supplementation on growth performance, dietary net energy (NE), and carcass characteristics. Cattle originated from southeast Texas and were received at the University of California Desert Research Center, El Centro, on April 3, 2013. Upon arrival, steers were vaccinated for bovine rhinotracheitis-parainfluenza (Bovi-Shield Gold, Zoetis, New York, NY, USA), clostridials (Ultrachoice-7, Zoetis, New York, NY, USA), treated for parasites (Dectomax Injectable, Zoetis, USA), injected subcutaneously with 500,000 IU vitamin A (Vital E-A+D3, Stuart Products, Bedford, TX, USA), and 800 mg tula-thromycin (Draxxin, Zoetis, USA), branded, ear-tagged, and implanted with Revalor-S (Intervet, Millsboro, DE, USA). Horns, if present, were tipped. Steers were then blocked by weight and randomly assigned within weight groupings to 16 pens, 5 steers/pen. Pens were 78 m² with 33 m² of overhead shade, automatic waterers, and fence-line feed bunks. Composition of experimental

diets is shown in Table 1. The 152-d trial consisted of a 28-d receiving period followed by a 124-d growing finishing period. During the receiving period steers were fed a receiving diet for 14 d, followed by 7 d each on two successive transition diets. Thereafter, steers were fed either a lesser energy dense (LED, 2.10 Mcal/kg NE_m) or higher energy dense (HED, 2.22 Mcal/kg NE_m) growing finishing diet. All diets were fed with or without 28 mg/kg (dry matter [DM] basis) VM (V-max 50, Phibro Animal Health, Ridgefield Park, NJ, USA) in a 2×2 factorial arrangement. Diets were prepared at weekly intervals and stored in plywood boxes located in front of each pen. Weekly samples of each diet were composited at 28-d intervals for dry matter determination. Steers were allowed *ad libitum* access to their experimental diets. Fresh feed was provided twice daily. On d 84 of the trial, all steers were injected subcutaneously with 500,000 IU vitamin A (Vital E-A+D3, Stuart Products, Bedford, TX, USA) and re-implanted with Revalor-S (Intervet, USA). Two steers, randomly selected from each pen, were orally bolused with a ruminal data logger (IDL-750, Telonics, Mesa, AZ, USA) for continuous recording of ruminal temperature at 15 min intervals.

Individual live weight (LW) and feed intake were determined at 28-d intervals. Feed intake was determined as the amount of feed offered minus the residual feed remaining in the feed bunk at the time cattle were weighed (a few h prior to the morning feeding). For calculating steer performance, initial LW is the off-truck arrival weight. Interim and final LW were reduced 4% to account for digestive tract fill. Final shrunk LW was adjusted for hot carcass weights (HCW) by dividing HCW by the decimal fraction of the average dressing percentage (0.632). Gain efficiency is ADG/DMI. Energy gain (EG) was calculated by the equation: $EG = ADG^{1.097} (0.0557 [W \times 478 / 527]^{0.75})$, where EG is the energy deposited (Mcal/d), W is the average shrunk body weight in kg, and 527 is the average harvest weight [5]. Maintenance energy (EM) was calculated by the equation: $EM = 0.077W^{0.75}$ [6]. Dietary NE_g was derived from NE_m by the equation: $NE_g = 0.877NE_m - 0.41$. The DMI is related to energy requirements and dietary NE_m according to the equation: $DMI = EG / (0.877NE_m - 0.41) + EM / NE_m$, and can be resolved for estimation of dietary NE by means of the quadratic formula: $x = (-b - \sqrt{b^2 - 4ac}) / 2c$, where $x = NE_m$, $a = -0.41EM$, $b = 0.877EM + 0.41DMI + EG$, and $c = -0.877DMI$ [7].

The HCW were obtained at time of slaughter. After carcasses chilled for 48 h, the following measurements were obtained: longissimus muscle (LM) area (cm²) by direct grid reading of the LM at the 12th rib; subcutaneous fat (cm) over the LM at the 12th rib taken at a location 3/4 the lateral length from the chine bone end (adjusted by eye for unusual fat distribution); kidney, pelvic, and heart fat (KPH) as a percentage of HCW; marbling score [8]; using 3.0 as minimum slight, 4.0 as minimum small, 5.0 as minimum modest, 6.0 as minimum moderate, etc.), and estimated retail yield of boneless, closely trimmed retail cuts from the round, loin, rib, and chuck (% of HCW; [9]) = $52.56 - 1.95 \times \text{subcutaneous}$

Table 1. Diet composition of experimental diets fed to steers

Items	Receiving ¹⁾	Transition 1	Transition 2	NE _m (Mcal/kg)	
				2.10	2.22
Ingredient composition (% DM)					
Distillers dried gains+solubles	20.00	20.00	20.00	20.00	10.00
Steam-flaked corn	36.32	45.65	52.26	52.26	69.20
Tallow	2.00	2.00	2.00	2.00	2.50
Molasses	8.00	8.00	6.00	6.00	5.00
Alfalfa hay, early bloom	20.00	10.00	5.00	5.00	0.00
Sudangrass, hay	12.00	12.00	12.00	12.00	10.00
Limestone	0.73	1.20	1.49	1.49	1.56
Virginiamycin, 28 g/T	±	±	±	±	±
Urea	0.45	0.65	0.75	0.75	1.20
Magnesium oxide	0.10	0.10	0.10	0.10	0.14
Trace mineral salt ²⁾	0.40	0.40	0.40	0.40	0.40
Nutrient composition (DM basis) ³⁾					
Dry matter (%)	88.02	87.70	87.85	87.84	87.55
NE _m (Mcal/kg)	1.97	2.06	2.11	2.10	2.22
NE _g (Mcal/kg)	1.33	1.40	1.45	1.44	1.55
Metabolizable energy (Mcal/kg)	2.91	3.00	3.06	3.05	3.17
Digestible energy (Mcal/kg)	3.52	3.63	3.70	3.69	3.83
Crude protein (%)	16.02	15.48	15.28	14.97	14.00
Rumen DIP (%)	67.18	64.83	63.07	62.52	63.05
Rumen UIP (%)	32.82	35.17	36.93	37.48	36.95
Ether extract (%)	6.40	6.51	6.65	6.60	6.66
Ash (%)	7.03	6.77	6.46	6.34	5.63
Nonstructural carbohydrates	41.12	46.96	49.75	49.57	59.31
Neutral detergent fiber (%)	28.79	25.43	23.92	25.13	17.43
Calcium (%)	0.80	0.80	0.80	0.70	0.70
Phosphorus (%)	0.37	0.38	0.38	0.39	0.34
Potassium (%)	1.41	1.19	1.01	0.99	0.75
Magnesium (%)	0.30	0.30	0.29	0.30	0.28
Sulfur (%)	0.29	0.25	0.22	0.20	0.17

NE_m, net energy value of the diet for maintenance; DM, dry matter; NE_g, net energy value of the diet for gain; DIP, digestible intake protein; UIP, undigestible intake protein.

¹⁾ The feeding program of cattle had 28-d of adaptation to finishing diets. The receiving diet was fed during the initial 14-d period following arrival into the feedlot, followed by 7 d on transition diets 1 and 2, respectively. Subsequently, steers were fed their respective finishing diet (2.10 vs 2.22 Mcal/kg NE_m). All diets were fed with or without virginiamycin.

²⁾ Trace mineral salt contained: CoSO₄, 0.068%; CuSO₄, 1.04%; FeSO₄, 3.57%; ZnO, 0.75%; MnSO₄, 1.07%; KI, 0.052%; and NaCl, 93.4%.

³⁾ Based on tabular values for individual feed ingredients [10].

fat–1.06×KPH+0.106×LM area–0.018×HCW.

Pens were used as experimental units. In addition to overall 152-d treatment effects on cattle growth performance, treatment effects were further separated into initial 84-d growing phase (representing the period of first growth implant), and 68-d finishing phase (representing the period of high ambient temperature following application of the second growth implant and insertion of ruminal thermistors). The experimental data were analyzed as a randomized complete block design in a 2×2 factorial arrangement (Statistix 10, Analytical Software, Tallahassee, FL, USA). Treatment effects were considered significant for $p \leq 0.05$ and as trends for $p > 0.05$ and ≤ 0.10 . When significant interactions were detected, mean separation (least significant difference, LSD) was performed.

Trial 2. Characteristics of digestion and ruminal

fermentation

Four Holstein steers (170.4±5.6 kg) with cannulas in the rumen (3.8 cm internal diameter) and proximal duodenum [10] were used in 4×4 Latin square experiment to study treatment effects on characteristics of digestion. Treatments were the same as those used in Trial 1 (Table 1) with the inclusion of 0.30% chromic oxide as a digesta marker. Dietary VM was top-dressed on feed allotment at time of feeding. Steers were maintained in individual pens (4 m²) with automatic waterers. Diets were fed at 0800 and 2000 h daily. In order to avoid the complications of feed refusals, DMI was restricted to 3.72 kg/d (equivalent to 2.2% of LW). Experimental periods were 3 weeks, with 10 d for dietary treatment adjustment, 4 d for collection, and 7 d of drug withdrawal (steers were fed only the basal diet with no added VM for 1 week before switching to new dietary treatment assignments of the subsequent experimental period). During collection, duodenal and fecal

samples were taken twice daily as follows: d 1, 0750 and 1350 h; d 2, 0900 and 1500 h; d 3, 1050 and 1650 h, and d 4, 1200 and 1800 h. Individual samples consisted of approximately 700 mL of duodenal chyme and 200 g (wet basis) of fecal material. Samples from each steer within each collection period were composited for analysis. During the final day of each collection period, ruminal samples were obtained from each steer via ruminal cannula 4 h after feeding. Ruminal fluid pH was determined on fresh samples. Samples were strained through 4 layers of cheesecloth. Two milliliters of freshly prepared 25% (wt/vol) meta-phosphoric acid was added to 8 mL of strained ruminal fluid. Samples were then centrifuged (17,000×g for 10 min), and supernatant fluid was stored at -20°C for volatile fatty acids (VFA) analysis (gas chromatography) [11]. Upon completion of the experiment, ruminal fluid was obtained via the ruminal cannula from all steers and composited for isolation of ruminal bacteria by differential centrifugation [12].

Samples were subjected to all or part of the following analysis: dry matter (oven drying at 105°C until no further weight loss), ash, ammonia nitrogen (method 8.026; [13]), Kjeldahl nitrogen (method 7.037; [13]), neutral detergent fiber ([14]; adjusted for insoluble ash), chromic oxide [15], gross energy (adiabatic bomb calorimetry), purines [16], and starch [17]. Microbial OM and nitrogen leaving the abomasum were calculated using purines as a microbial marker [16]. The OM fermented in the rumen was considered equal to OM intake minus the difference between the amount of total OM reaching the duodenum and microbial OM reaching the duodenum. Feed N escape to the small intestine was considered equal to total N leaving the abomasum minus ammonia-N, microbial N and endogenous N, assuming endogenous N is equivalent to $0.195W^{0.75}$ [18]. Methane production (mol/mol glucose equivalent fermented) was estimated based on the theoretical fermentation balance for observed molar proportion of acetate, propionate, and butyrate (Ma, Mp, and Mb, respectively), where mol methane, $Mm = Ma + 2Mb - (Ma/2 + Mp/4 + 3Mb/2)$, and mol glucose equivalent = $(2Ma + 3Mp + 4Mb + (Ma/2 + Mp/4 + 3Mb/2) + Mm)/6$ [19]. Digestible energy was calculated as gross energy intake minus gross energy excretion.

Treatment effects on characteristics of digestion were analyzed as a 4×4 Latin square design with 2×2 factorial arrangement of treatments (Stastix 10, Analytical Software, USA). The statistical model for the trial was as follows: $Y_{ijk} = \mu + S_i + P_j + T_k + E_{ijk}$, where: Y_{ijk} is the response variable, μ is the common experimental effect, S_i is the steer effect (df = 3), P_j is the period effect (df = 3), T_k is the treatment effect (df = 3) and E_{ijk} is the residual error (df = 6). Treatment effects were considered significant for $p \leq 0.05$ and as trends for $p > 0.05$ and ≤ 0.10 . When significant interactions were detected, mean separation (LSD) was performed.

RESULTS AND DISCUSSION

Trial 1. Growth performance and carcass characteristics

of feedlot steers

Treatment effects on cattle growth performance are shown in Table 2. The VM supplementation did not influence on ADG ($p > 0.10$). Based on growth equations of Zinn et al [20]; $ADG = [1.628 + 0.00287IW - 0.00000107IW^2 - 0.461 \text{ Frame}]$, expected ADG for medium-frame steers in this study (initial weight [IW] = 298.2 kg) is 1.47 kg, in good agreement with the observed ADG (1.50 kg). Likewise, Salinas-Chavira et al [3] did not observe an effect of VM supplementation on 340-d ADG of calf-fed Holstein steers. Nevertheless, in other studies [1,2,4], increased ADG has been a distinctive response to VM supplementation.

During the initial 84-d period, LED-fed steers tended to have greater (7.4%, $p = 0.08$) ADG than HED-fed steers. However, during the subsequent 68-d period and overall, the effect of diet energy density on ADG was not appreciable ($p > 0.10$). This effect was expected, as energy density of both the LED and HED diets were sufficiently high so to not limit energy intake, per se [5,21].

Daily DMI was greater ($p < 0.01$) for LED- than for HED-fed steers, resulting in decreased gain efficiency. These differences were anticipated. Indeed, observed DMI was in good agreement (98%) with expected based on ADG and diet energy density. However, there was a tendency ($p = 0.09$) for an interaction between VM supplementation and diet energy density on DMI. With the LED diet VM tended to increase DMI, whereas with the HED diet VM tended to decrease DMI. In the case of the LED diet, the tendency for increased DMI is reflected in a numerical increase in ADG. Supplemental VM did not affect ($p = 0.34$) the estimated NE value of the LED diet. In contrast, in the case of the HED diet, the tendency for decreased DMI with VM supplementation was due to an effectual increase of 5% and 7%, respectively ($p < 0.05$), in estimated dietary NE_m and NE_g . The magnitude of the increase in dietary NE_m and NE_g is in good agreement with previously reported increases of 6% and 7%, respectively [2-4]. There were no treatment effects on carcass characteristics ($p > 0.10$; Table 3).

Hourly air temperature (T_a), temperature humidity index (THI [22]; NOAA [23]), and ruminal temperature during a 70-d period from July 25 through October 3, 2013 are shown in Figure 1, 2. There was a reasonably close association between both average T_a and THI and ruminal temperature, explaining 72.4% and 66.9% of the variation, respectively ($p < 0.01$). Mader et al [24] observed that under standard conditions of solar radiation and wind, day-time respiration rate of feedlot cattle (Angus and Angus cross) was classified as “elevated” when THI approached 70 and “moderate” (including presence of small amount of drool or saliva) when THI approached 80. During the 70-d monitoring period of the present study, 24-h THI averaged 78.2 ± 6.2 . Hourly THI averaged 80 or greater between the period 0900 and 1900 h. During the time period between 1900 and 0700 h (evening and early morning), there were no treatment effects ($p > 0.10$) on ruminal temperature. During the daylight hours between 0700 and 1900 h, diet energy density did not affect ($p = 0.97$) ruminal temperature,

Table 2. Influence of dietary energy concentration and virginiamycin (VM) supplementation on growth-performance of feedlot steers (Trial 1)

Items	2.10 Mcal/kg NE _m		2.22 Mcal/kg NE _m		SEM	p value		
	0 mg VM	28 mg VM	0 mg VM	28 mg VM		Energy	VM	Interaction
Pen replications	4	4	4	4	-	-	-	-
Body weight ¹⁾ (kg)								
Initial	301.8	300.1	293.0	297.9	3.1	0.11	0.62	0.31
84 d	440.9	451.0	430.4	430.8	6.9	0.47	0.05	0.50
152 d	526.0	537.9	519.9	524.5	9.0	0.38	0.30	0.69
ADG (kg/d)								
1-84	1.66	1.80	1.64	1.58	0.06	0.08	0.49	0.14
84-152	1.25	1.28	1.32	1.38	0.06	0.24	0.52	0.80
1-152	1.48	1.56	1.49	1.49	0.05	0.60	0.42	0.40
DMI (kg/d)								
1-84	8.63	8.96	8.03	7.65	0.20	<0.01	0.90	0.12
84-152	8.07	8.38	7.62	7.27	0.17	<0.01	0.92	0.09
1-152	8.38	8.70	7.85	7.48	0.18	<0.01	0.91	0.09
Gain efficiency (G/F)								
1-84	0.192	0.201	0.203	0.207	0.005	0.10	0.24	0.61
84-152	0.156	0.153	0.173	0.188	0.006	<0.01	0.32	0.16
1-152	0.176	0.180	0.190	0.199	0.004	<0.01	0.14	0.52
Dietary NE (Mcal/kg)								
Maintenance	2.11	2.13	2.22	2.34	0.03	<0.01	0.09	0.21
Gain	1.44	1.46	1.54	1.64	0.03	<0.01	0.09	0.21
Observed/expected NE								
Maintenance	1.01 ^a	1.02 ^a	1.00 ^a	1.05 ^b	0.016	0.34	0.09	0.22
Gain	1.01 ^a	1.02 ^a	1.00 ^a	1.07 ^b	0.020	0.34	0.09	0.22

NE_m, net energy value of the diet for maintenance; SEM, standard error of mean; ADG, average daily gain; DMI, dry matter intake; NE, net energy.

¹⁾ Initial and final live weights reduced 4% to account for fill.

^{ab} Different superscripts in the same row differ (p < 0.05).

averaging 40.35°C and 40.36°C±0.15°C for the LED and HED diets, respectively. However, during that period VM supplementation decreased (p<0.05) ruminal temperature, averaging 40.50°C and 40.21°C±0.05°C for non-supplemented and VM supplemented diets, respectively. In broiler chickens under condition of heat stress, enhanced growth performance with VM supplementation was likewise associated with decreased heat production and related heat distress mortality, and improved energetic efficiency. Belay and Teeter [25] suggested that observed response to VM supplementation was partly attributable to improved tem-

perature homeostasis of chickens under conditions of heat stress. Consistent with this earlier work involving poultry, we likewise found that VM supplementation does in fact lower core temperatures in cattle. This is the first time that this observation has been reported for ruminants.

Trial 2. Characteristics of digestion and ruminal fermentation

Treatment effects on characteristics of digestion are shown in Table 4. There were no treatment interactions (p>0.10). Supple-

Table 3. Influence of dietary energy concentration and virginiamycin (VM) supplementation on carcass characteristics of feedlot steers (Trial 1)

Items	2.10 Mcal/kg NE _m		2.22 Mcal/kg NE _m		SEM	p value		
	0 mg VM	28 mg VM	0 mg VM	28 mg VM		Energy	VM	Interaction
Pen replications	4	4	4	4	-	-	-	-
Hot carcass weight	332.5	340.0	328.6	331.5	5.7	0.30	0.38	0.69
Dressing percentage	63.2	62.6	63.2	63.7	0.4	0.18	0.96	0.22
KPH ¹⁾	2.52	2.54	2.50	2.55	0.09	0.98	0.73	0.88
Fat thickness (cm)	1.43	1.47	1.40	1.26	0.08	0.18	0.56	0.27
LM area (cm ²)	82.6	91.4	90.0	87.8	4.1	0.65	0.44	0.21
Yield grade ²⁾ (%)	49.6	50.3	50.6	50.6	0.4	0.20	0.43	0.41

NE_m, net energy value of the diet for maintenance; SEM, standard error of mean; KPH, kidney, pelvic and heart; LM, longissimus muscle; HCV, hot carcass weights.

¹⁾ KPH fat as a percentage of carcass weight.

²⁾ Estimated retail yield of boneless, closely trimmed retail cuts from the round, loin, rib, and chuck (percentage of HCW; [14]) = 52.56–1.95 × subcutaneous fat–1.06 × KPH+0.106 × LM area–0.018 × HCW.

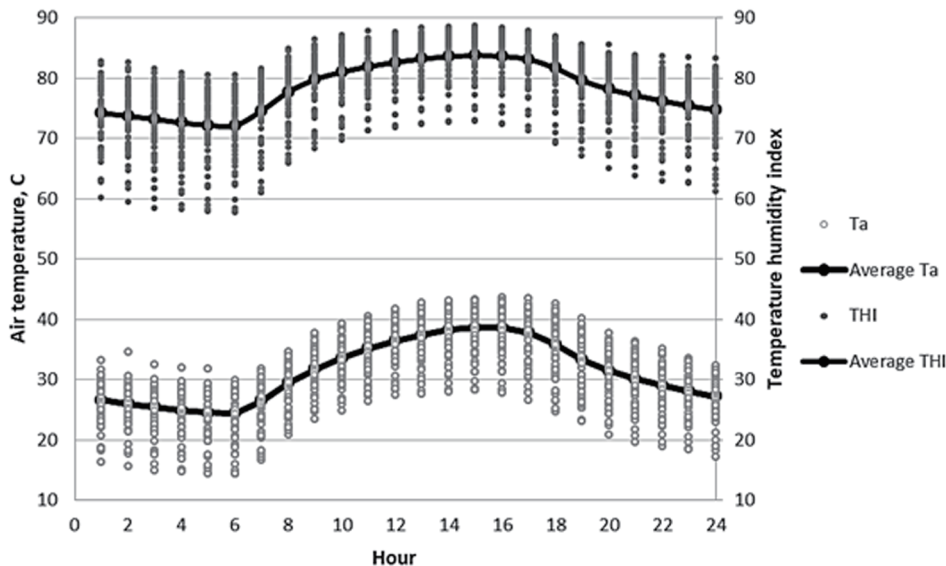


Figure 1. Hourly air temperature (Ta) and temperature humidity index (THI) during the period a 70-d period when treatment effects on ruminal temperature was assessed (July 25 to October 3, 2013).

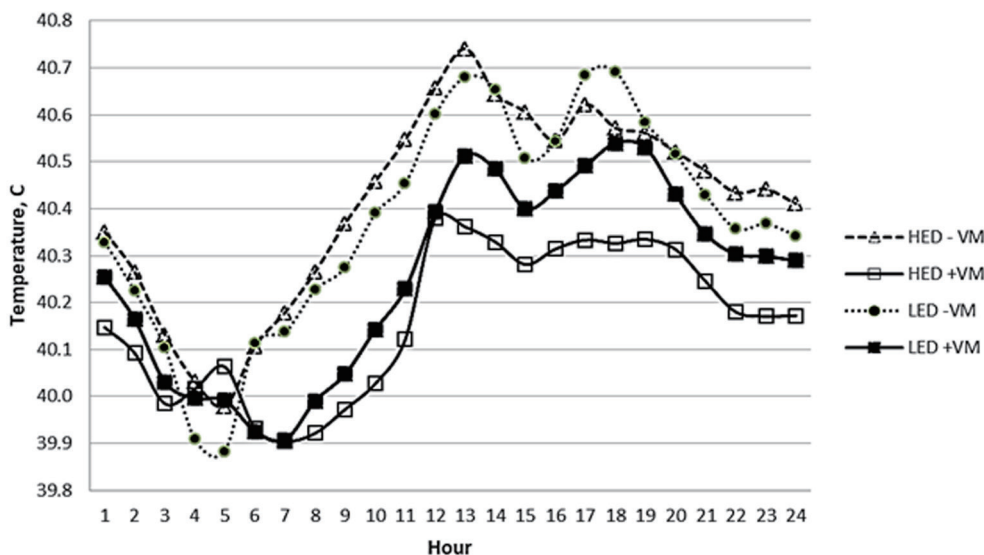


Figure 2. Treatment effects on average hourly ruminal temperature during the period a 70-d period between July 25 and October 3, 2013. HED, higher energy density; LED, lower energy density; VM, virginiamycin.

mental VM did not influence ($p>0.10$) characteristics of ruminal and total tract digestion of nutrients. This result is, in general, consistent with previous studies [2-4], although in some instances [2] VM supplementation was observed to reduce ruminal degradation of feed N.

Diet energy density did not influence ($p>0.10$) ruminal and total tract digestion. This finding is consistent with numerous previous studies evaluating the effect of forage levels on fiber digestion in finishing diets for feedlot cattle [21,26-29]. Percentage ruminal starch digestion was greater (9%, $p<0.01$), and total tract

starch digestion tended to be slightly greater ($p = 0.07$) for HED vs LED diets. This effect was not expected. Salinas-Chavira et al [21] likewise observed decreased ruminal starch digestion with increased forage level in the finishing diet. However, in numerous other studies evaluating forage levels in steam-flaked corn-based finishing diet [26-29], forage level did not affect ruminal or total tract starch digestion.

As expected, due to the greater proportion of steam-flaked corn, the HED diet resulted in greater ruminal ($p = 0.02$), post-ruminal ($p<0.01$) and total tract digestion ($p<0.01$) of OM, and

Table 4. Influence of dietary energy concentration and virginiamycin (VM) supplementation on characteristics of ruminal and total tract digestion (Trial 2)

Items	2.10 Mcal/kg NE _m		2.22 Mcal/kg NE _m		SEM	p value		
	0 mg VM	28 mg VM	0 mg VM	28 mg VM		Energy	VM	Interaction
Intake ¹⁾ (g/d)								
Dry matter	3,746	3,746	3,715	3,715	-	-	-	-
Organic matter	3,456	3,456	3,494	3,494	-	-	-	-
NDF	877	877	623	623	-	-	-	-
Starch	1,466	1,466	2,122	2,122	-	-	-	-
Nitrogen	86	86	77	77	-	-	-	-
Gross energy (Mcal/d)	15.93	15.93	15.66	15.66	-	-	-	-
Flow to duodenum (g/d)								
Organic matter	2,174	2,143	1,932	1,936	65.8	0.01	0.84	0.80
NDF	407	428	281	294	30.5	<0.01	0.61	0.89
Starch	402	395	433	440	28.1	0.22	0.99	0.82
Nitrogen	102	101	89	84	2.51	<0.01	0.28	0.48
Micronial N	47.2	48.1	45.2	42.3	1.37	0.03	0.49	0.21
Ammonia N	3.04	2.83	3.40	3.16	0.24	0.21	0.40	0.95
Non ammonia N	98.8	97.9	85.9	81.3	2.47	<0.01	0.31	0.48
Feed N	42.4	40.6	31.6	29.9	2.03	<0.01	0.43	0.98
Ruminal digestion (%)								
Organic matter	50.8	51.9	57.6	56.7	1.9	0.02	0.95	0.59
NDF	53.6	51.2	54.8	52.9	4.3	0.75	0.64	0.97
Starch	72.6	73.0	79.6	79.3	1.5	<0.01	0.96	0.81
Feed nitrogen	50.8	52.9	59.1	61.2	2.5	0.02	0.43	0.98
Microbial efficiency ²⁾	27.5	27.6	22.8	21.5	1.08	<0.01	0.60	0.56
N efficiency ³⁾	1.15	1.14	1.11	1.05	0.03	0.10	0.29	0.44
Post ruminal digestion (% Duodenal)								
Organic matter	56.9	59.1	68.1	64.9	1.6	<0.01	0.76	0.15
Starch	90.7	92.9	94.2	92.4	1.4	0.30	0.90	0.19
Nitrogen	67.9	68.6	73.8	71.5	1.5	0.03	0.61	0.38
Fecal excretion (g/d)								
Dry matter	1,061	1,021	726	799	40.3	<0.01	0.69	0.21
Organic matter	934	884	614	684	48.4	<0.01	0.85	0.26
NDF	429	409	248	292	33.8	<0.01	0.73	0.38
Starch	38.8	28.3	22.7	32.6	7.64	0.47	0.97	0.23
Nitrogen	32.7	31.6	23.4	24.2	1.6	<0.01	0.93	0.59
Gross energy (Mcal/d)	4.56	4.34	3.04	3.36	0.20	<0.01	0.81	0.24
Total tract digestion (%)								
Dry matter	71.7	72.7	80.5	78.5	1.1	<0.01	0.69	0.21
Organic matter	73.0	74.4	82.4	80.4	1.4	<0.01	0.85	0.27
Neutral detergent fiber	51.1	53.3	60.2	53.0	4.8	0.37	0.63	36.7
Starch	97.4	98.1	98.9	98.5	0.4	0.07	0.79	0.24
Nitrogen	62.1	63.3	69.7	68.7	1.9	0.02	0.95	0.60
DE (Mcal/d)	11.37	11.59	12.62	12.30	0.20	<0.01	0.81	0.24
DE (Mcal/kg)	3.04	3.09	3.40	3.31	0.05	<0.01	0.80	0.24
DE (%)	71.4	72.7	80.6	78.5	1.30	<0.01	0.80	0.24

NE_m, net energy value of the diet for maintenance; SEM, standard error of mean; NDF, neutral detergent fiber; DE, digestible energy.

¹⁾ Dry matter intake was restricted to 2.2% of body weight.

²⁾ Microbial N, g/kg organic matter fermented.

³⁾ Non-ammonia N flow to the small intestine as a fraction of N intake.

dietary digestible energy ($p < 0.01$). However, in spite of increased ruminal OM digestion, both ruminal microbial efficiency ($p < 0.01$) and net flow of microbial N to the small intestine ($p = 0.03$) were depressed with HED vs LED diets. The observed reduction in microbial efficiency was expected. Based on NRC [5] the predicted microbial efficiency for the LED and HED diets are 25.2

and 22.2, respectively, in good agreement with observed (Table 4).

Ruminal degradation of feed N was greater ($p = 0.02$) for HED vs LED diets. The observed degradation of feed N for the HED diet was in good agreement (99%) with expected (NRC [5], Table 1). In contrast, observed ruminal degradation of feed N with the LED diet was 88% of expected. The basis for this lower-than-

Table 5. Influence of dietary energy concentration and virginiamycin (VM) supplementation on ruminal pH, VFA molar proportions and estimate methane production (Trial 2)

Items	2.10 Mcal/kg NE _m		2.22 Mcal/kg NE _m		SEM	p value		
	0 mg VM	28 mg VM	0 mg VM	28 mg VM		Energy	VM	Interaction
Rumen pH	5.82	6.09	5.85	5.90	0.12	0.53	0.23	0.41
Total VFA	113.4	100.2	116.4	115.3	7.1	0.25	0.35	0.43
Ruminal VFA (mol/100 mol)								
Acetate	57.8	60.8	56.3	57.4	1.8	0.23	0.30	0.64
Propionate	28.8	28.6	33.6	30.9	2.4	0.20	0.57	0.63
Butyrate	13.3	10.6	10.2	11.7	1.2	0.40	0.63	0.12
Acetate/propionate	2.02	2.51	1.70	1.87	0.28	0.14	0.30	0.60
Methane ¹⁾	0.50	0.51	0.45	0.48	0.03	0.21	0.49	0.79

VFA, volatile fatty acids; NE_m, net energy value of the diet for maintenance; SEM, standard error of mean.

¹⁾ Methane, mol/mol glucose equivalent fermented.

expected feed crude protein degradation is not certain. But in light of the decreased ruminal starch digestion with that diet, we speculate that the greater forage level might have produced an increased rate of passage of distillers dried grain (DDG) and associated corn. The combined effect of decreased percentage ruminal degradation of feed N and increased microbial efficiency was a tendency for increased (6%, $p = 0.10$) ruminal N efficiency (N entering the small intestine/N intake).

Treatment effects on ruminal pH, ruminal VFA molar proportions and estimated methane production are shown in Table 5. Dietary energy density did not affect ($p > 0.10$) ruminal pH, VFA molar proportions or estimated ruminal methane production. Forage levels were 17% and 10% for the LED and HED diets, respectively (Table 1). In previous work conducted at this center, increases in forage levels of steam-flaked corn-based growing-finishing diets from 10% to 20% [27] increased ruminal pH, acetate:propionate molar ratio and methane. However, when forage levels were varied within a narrower range (between 8% and 16%), forage-level effect on ruminal pH and VFA molar proportions was non-appreciable [28,29]. Additionally, the DDG content of the LED diet was 5 percentage units greater than that of the HED diet. Carrasco et al [30] observed that notwithstanding its negligible starch content, as DDG replaced steam-flaked corn in the finishing diet ruminal pH did not increase. Supplemental VM did not affect ($p > 0.10$) ruminal pH, VFA molar proportions or estimated methane production. Likewise, Montano et al [2] and Salinas-Chavira et al [4] did not observe an effect of VM on ruminal VFA in steers fed steam-flaked corn-based finishing diets.

CONCLUSION

The magnitude for enhancement in the NE value of growing-finishing diets due to the VM supplementation may be dependent on the energy density of the growing-finishing diet. Virginiamycin-induced enhancement in dietary NE appears to be largely associated with increased efficiency of energy utilization, as effects of virginiamycin supplementation on characteristics of ruminal

and total tract digestion were not appreciable. Under conditions of high ambient temperature virginiamycin supplementation may reduce core body temperature.

CONFLICT OF INTEREST

We certify that there is no conflict of interest with any financial organization regarding the material discussed in the manuscript.

ACKNOWLEDGMENTS

This project was supported through University of California Agricultural Experiment Station with Hatch funding from the USDA National Institute of Food and Agriculture.

REFERENCES

1. Rogers JA, Branine ME, Miller CR, et al. Effects of dietary virginiamycin on performance and liver abscess incidence in feedlot cattle. *J Anim Sci* 1995;73:9-20.
2. Montano MF, Manriquez OM, Salinas-Chavira J, Torrentera N, Zinn RA. Effects of monensin and virginiamycin supplementation in finishing diets with distiller dried grains plus solubles on growth performance and digestive function of steers. *J Appl Anim Res* 2014;43:417-25.
3. Salinas-Chavira J, Lenin J, Ponce E, Sanchez U, Torrentera N, Zinn RA. Comparative effects of virginiamycin supplementation on characteristics of growth performance, dietary energetics, and digestion of calf-fed Holstein steers. *J Anim Sci* 2009;87:4101-8.
4. Salinas-Chavira J, Barreras A, Plascencia A, et al. Influence of protein nutrition and virginiamycin supplementation on feedlot growth performance and digestive function of calf-fed Holstein steers. *J Anim Sci* 2016;94:4276-86.
5. NRC. Nutrient requirements of beef cattle. 7th rev. ed. Washington, DC: National Academy Press; 2000.
6. NRC. Nutrient requirements of beef cattle. 6th rev. ed. Washington, DC: National Academy Press; 1984.
7. Zinn RA, Shen, Y. An evaluation of ruminally degradable intake protein and metabolizable amino acid requirements of feedlot calves. *J Anim*

- Sci 1998;76:1280-9.
8. USDA. United States Standards for Grading of Carcass Beef. Washington, DC: Agricultural Marketing Service, USDA; 1997.
 9. Murphey CE, Hallett DK, Tyler WE, Pierce Jr JC. Estimating yields of retail cuts from beef carcasses. Presented at the 62nd Meeting of the American Society of Animal Production; Chicago, November 26, 1960.
 10. Zinn RA, Plascencia A. Interaction of whole cottonseed and supplemental fat on digestive function in cattle. *J Anim Sci* 1993;71:11-7.
 11. Zinn RA. Comparative feeding value of supplemental fat in finishing diets for feedlot steers supplemented with and without monensin. *J Anim Sci* 1988;66:213-27.
 12. Bergen WG, Purser DB, Cline JH. Effect of ration on the nutritive quality of rumen microbial protein. *J Anim Sci* 1968;27:1497-501.
 13. AOAC. Official methods of analysis. 14th ed. Arlington, VA: AOAC International; 1984.
 14. Goering HK, Van Soest PJ. Forage fiber analyses (apparatus, reagents, procedures, and some applications). Washington, DC: Agric Handbook No. 379. ARS-USDA, 1970.
 15. Hill FN, Anderson DL. Comparison of metabolizable energy and productive energy determinations with growing chicks. *J Nutr* 1958; 64:587-603.
 16. Zinn RA, Owens FN. A rapid procedure for purine measurement and its use for estimating net ruminal protein synthesis. *Can J Anim Sci* 1986;66:157-66.
 17. Zinn RA. Influence of flake density on the comparative feeding value of steam-flaked corn for feedlot cattle. *J Anim Sci* 1990;68:767-75.
 18. Orskov ER, MacLeod NA, Kyle DJ. Flow of nitrogen from the rumen and abomasum in cattle and sheep given protein-free nutrients by intragastric infusion. *Br J Nutr* 1986;56:241-8.
 19. Wolin MJ. A theoretical rumen fermentation balance. *J Dairy Sci* 1960;43:1452-9.
 20. Zinn RA, Barreras A, Owens FN, Plascencia A. Performance by feedlot steers and heifers: daily gain, mature body weight, dry matter intake, and dietary energetics. *J Anim Sci* 2008;86:2680-9.
 21. Salinas-Chavira J, Alvarez E, Montañó MF, Zinn RA. Influence of forage NDF level, source and pelletizing on growth performance, dietary energetics, and characteristics of digestive function for feedlot cattle. *Anim Feed Sci Technol* 2013;183:106-15.
 22. Thom EC. The discomfort index. *Weatherwise* 1959;12:57-9.
 23. NOAA (National Oceanic and Atmospheric Administration). Livestock hot weather stress. Operations manual Letter C-31-76. Kansas City, MO, USA: NOAA; 1976.
 24. Mader TL, Davis MS, Brown-Brandl T. Environmental factors influencing heat stress in feedlot cattle. *J Anim Sci* 2006;84:712-9.
 25. Belay T, Teeter RG. Virginiamycin and caloric density effects on live performance, blood serum metabolite concentration, and carcass composition of broilers reared in thermoneutral and cycling ambient temperatures. *Poult Sci* 1996;75:1383-92.
 26. Zinn RA. Influence of forage level on response of feedlot steers to salinomycin supplementation. *J Anim Sci* 1986;63:2005-12.
 27. Zinn RA, Plascencia A, Barajas R. Interaction of forage level and monensin in diets for feedlot cattle growth performance and digestive function. *J Anim Sci* 1994;72:2209-15.
 28. Calderon-Cortes JF, Zinn RA. Influence of dietary forage level and forage coarseness of grind on growth performance and digestive function in feedlot steers. *J Anim Sci* 1996;74:2310-6.
 29. Manriquez, OM, Montano MF, Calderon JF, et al. Influence of wheat straw pelletizing and inclusion rate in dry rolled or steam-flaked corn-based finishing diets on characteristics of digestion for feedlot cattle. *Asian-Australas J Anim Sci* 2016;29:823-9.
 30. Carrasco R, Arrizon AA, Plascencia A, Torrentera NG, Zinn RA. Comparative feeding value of distillers dried grains plus solubles as a partial replacement for steam-flaked corn in diets for calf-fed Holstein steers: characteristics of digestion, growth performance, and dietary energetics. *J Anim Sci* 2013;91:1801-10.